

SIMPLY CLEVER

ŠKODA



# The ŠKODA Fabia



Effective: March 2013



## Welcome to the Fabia

### The Fabia; what is it?

The Fabia is a small city car that offers you the space and versatility required for everyday life. With space for 5 people and still enough room in the back for your luggage, the Fabia is the ideal small family car. It's as happy doing 30mph through town on the school run as it is doing 70mph on the motorway and of course, at its core is the traditional ŠKODA offer of value for money and that legendary "extra bit of car".

### Versatility across the range.

Unlike many of its competitors, the Fabia is available in hatch and estate. With eight different trim levels, five petrol engines, four diesel engines and a DSG gearbox, there will be a Fabia in the range that suits you.

### Driving Position.

As we spend more and more time in our cars, being comfortable is essential. With this in mind, the Fabia has been designed with a high driving position, allowing greater visibility of the road ahead, more headroom, and not to mention making it easier for you to get in and out of. From entry level the Fabia also comes with an adjustable driver's seat and a height and reach adjustable steering wheel so you will find getting a comfortable and safe driving position easy.

### Boot space.

The Fabia continues to impress even in the boot where, with the seats up, the hatch offers 315 litres of space while the estate offers a whopping 505 litres. With the seats down, the hatch and estate have 1,180 litres and 1,485 litres of space respectively. So regardless of whether it's the weekly shop, the annual holiday, or a trip to the garden centre, the Fabia's boot won't be lacking the space you need.

**Music.** In addition to the standard radio, every Fabia comes with a 3.5mm aux in socket. With the addition of a cable, this allows MP3 players to be connected to the car, meaning that you can listen to your MP3 player through the car radio. There is also an optional MDI (Multi Device Interface) cable. This enables you to connect a variety of music players through the purchase of additional cables (through retailer supplied accessories) from ipods to devices with USB or mini USB ports.

The Fabia was refreshed in March 2010, giving the car a more dynamic appearance. The main changes were to the front, a redesigned, wider front grille and newly designed headlights optically widen the car, strengthening the horizontal lines and increasing its road presence. The sculpted bonnet and wraparound windscreen with black A pillars and 'floating' roof remain, providing an air of style, elegance and contemporary design.

The modern exterior is matched by the updated interior. Newly designed stereos, steering wheels and upholsteries improve the feeling of style and quality in the Fabia - soft touch surfaces and ergonomically laid out controls make the car a joy to drive. With outstanding boot space, headroom and legroom, not to mention lots of room for luggage, driver and passengers can travel in comfort.

The biggest change for Fabia was under the bonnet. Cleaner and more efficient petrol and diesel engines offer the driver a suitable engine for every situation. TSI petrol engines offer a great blend of power and torque combined with low CO<sub>2</sub> and improved fuel economy, whilst the range of 'Common Rail' diesel engines emit just 109g/km of CO<sub>2</sub>, helping to reduce the impact on the environment.

The new Fabia GreenLine II is fitted with technological advancements such as a Stop/start system, gear change recommendation and energy recovery, improving economy and lowering CO<sub>2</sub> emissions even further. These advancements mean the Fabia GreenLine II emits just 89 g/km CO<sub>2</sub>, with a combined fuel economy of 83.1 mpg making it the most economical ŠKODA ever!

So now the introduction to the Fabia is over, why not take a look in a little more detail?

[www.skodafabia-vrs.co.uk](http://www.skodafabia-vrs.co.uk)



# The ŠKODA Fabia S

Hatchback	CO <sub>2</sub> (g/km)	VED Band**	Insurance Group (50)	Recommended Basic	VAT	RRP	Recommended OTR*	Business user information BiK 2013/14	P11D Value
1.2 12V 60PS 5spd	128	D	3E	£7,725.00	£1,545.00	£9,270.00	£9,835.00	17%	£9,780.00
1.2 12V 69PS 5spd ♦	128	D	4E	£8,270.83	£1,654.17	£9,925.00	£10,490.00	17%	£10,435.00
1.2 TSI 105PS 7spd DSG	124	D	12E	£10,058.33	£2,011.67	£12,070.00	£12,635.00	16%	£12,580.00
1.6 TDI CR 75PS 5spd DPF	109	B	7E	£9,462.50	£1,892.50	£11,355.00	£11,920.00	16%	£11,865.00
1.6 TDI CR 90PS 5spd DPF ♦	109	B	11E	£9,954.17	£1,990.83	£11,945.00	£12,510.00	16%	£12,455.00
Estate									
1.2 12V 69PS 5spd	128	D	4E	£8,783.33	£1,756.67	£10,540.00	£11,105.00	17%	£11,050.00
1.2 TSI 105PS 7spd DSG ♦	124	D	12E	£10,570.83	£2,114.17	£12,685.00	£13,250.00	16%	£13,195.00
1.6 TDI CR 75PS 5spd DPF	109	B	7E	£9,975.00	£1,995.00	£11,970.00	£12,535.00	16%	£12,480.00
1.6 TDI CR 90PS 5spd DPF ♦	109	B	11E	£10,466.67	£2,093.33	£12,560.00	£13,125.00	16%	£13,070.00

♦ Stock vehicles only please consult your retailer.

## Standard Equipment

15" 'Satellite' steel wheels (6j x 15"195/55 R15 85H)	Category 2 electronic Immobiliser	Folding grab handles in the roof frame	Manually adjustable door mirrors	Roof aerial with second antenna in windscreen for FM2 signal
1.5-litre drinks holder in front door panels	Delayed interior lighting	Halogen headlights	Manually controlled heating system	Split folding rear seats (60%/40%)
3 point seat belts with seat belt tensioners and height adjustment (front)	Driver and passenger front and side airbags	Headlight range adjustment	Pollen filter	Ticket holder
3 point seat belts in the rear	Passenger airbag de-activation switch	Heated rear window	Power steering	Tyre repair kit (no spare wheel) †
3.5mm aux. socket (for MP3 players etc.)	Driver and passenger vanity mirrors	Height adjustable driver's seat	Preparation for ISOFIX	Windscreen wiper with Intermittent control (4 speed)
4 spoke steering wheel	Driver door mirror (aspherical) providing an increased field of view	Height adjustable head restraints (front & rear x2)	Radio 'Swing' 2DIN with single CD and 4 speakers (can play MP3 recordings)	
ABS (Anti-lock Braking System)	Driver seat belt warning light	Height and reach adjustable steering wheel	Remote central locking	
Black door mirrors and door handles	Electric front windows	HHC (Hill hold control) (1.2 TSI 105PS DSG only)	Rear drum brakes	
Body coloured bumpers	ESC Inc. ABS +ASR+EDL+HBA (1.2 TSI 105 DSG Only)	Interior rear view mirror with dimming facility	Rear fog light	
	Exterior temperature gauge		Rear wiper with intermittent control	
			Retractable parcel shelf (Estate only)	

For offers visit [www.skoda.co.uk/offers](http://www.skoda.co.uk/offers)

† A temporary spare wheel can be ordered as an option.

If added the tyre repair kit will be removed. For further details please check page 22.



Band	CO <sub>2</sub> (g/km)	First 12 Months <sup>1</sup> VED <sup>2</sup>	Standard VED <sup>2</sup>
A	Up to 100	£0	£0
B	101 - 110	£0	£20
C	111 - 120	£0	£30
D	121 - 130	£0	£100
E	131 - 140	£120	£120
F	141 - 150	£135	£135
G	151 - 165	£170	£170
H	166 - 175	£275	£195
I	176 - 185	£325	£215
J	186 - 200	£460	£250
K	201 - 225	£600	£270
L	226 - 255	£815	£460
M	Over 255	£1,030	£475

### OTR (Recommended On The Road)

\* Recommended 'On the Road' prices include delivery, 12 months Road Fund Licence, DVLA First registration Fee (at £55), and apply to the United Kingdom only.

### VED (Vehicle Excise Duty)

\*\* All vehicles will be subject to Vehicle Excise Duty based on the fuel type of the vehicle and its carbon dioxide (CO<sub>2</sub>) emissions level, measured in grams per kilometre (g/km). Due to changes in vehicle emissions data, CO<sub>2</sub> figures may differ on these vehicles if taken from current ŠKODA UK stock. The VED bands are shown in the table opposite.

<sup>1</sup>First year vehicle licence rates for petrol and diesel cars purchased on or after 1st April 2012. First year rate or 'showroom tax' applies to new car purchases only.

<sup>2</sup>Rate reverts to the Government's applicable Standard VED rate in subsequent years.

Edition: UK 1st April 2012. VAT is calculated at 20%. VED bands may change on 1st April 2013. Due to printing timescales, the VED figures in this brochure may be out of date after 1st April 2013. Please confirm figures with your ŠKODA retailer.

Company car tax is based on your cars carbon dioxide emissions. The higher the car's emissions, the higher its tax liability. When a company car is made available for private use a 'Benefit in Kind' value is calculated for tax purposes.

To help you work out your tax liability please refer to page 30.

### P11D (Expenses and Benefits)

The P11D value is calculated by taking the On The Road (OTR) price for the vehicle, less the Road Fund Licence (RFL) and First Registration Fee (FRF).

BiK (Benefit in Kind)  
The BiK percentage value is based on the CO<sub>2</sub> emissions of the vehicle for the current tax year 2013/2014.



## ŠKODA GreenLine II Technology

A combination of innovative technology and practical design features ensure that the Fabia GreenLine II is highly efficient and environmentally friendly. Below is an explanation of the technology present in the Fabia GreenLine II and how it works to keep fuel costs down and environmental impact low.

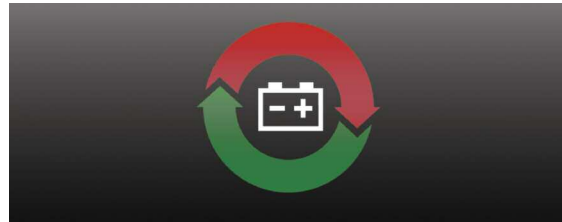


Fabia GreenLine comes with a **1.2 TDI CR 75PS DPF** engine. The economical three cylinder 1.2 TDI diesel engine in the GreenLine II produces just 89 g/km CO<sub>2</sub> which means road tax is totally free!

The Fabia GreenLine II has a combined fuel economy of 83.1 mpg, making the Fabia GreenLine II the most frugal ŠKODA ever made!



**Low rolling resistance tyres.** The Fabia GreenLine II has 15" 'Antares' alloys (6J x 15" 185/60 R15 84H) these lighter alloy wheels with low rolling resistance tyres have a higher prescribed air pressure to reduce friction.



**Energy Recovery.** Energy recovery is the process of converting kinetic energy (energy created through movement) back into usable electricity, which is either stored in the battery, or immediately used again by electrical components on the vehicle.

Depending on driving style, electrical energy is supplied to the vehicle by the alternator or directly by the battery. The principle of energy recovery is to reduce the load on the engine and therefore contribute to lower emissions and reduced fuel consumption.



**Stop/start System.** This innovative system turns off the engine when it is not needed, for example when the driver is stopped at traffic lights or in heavy traffic.

When a normal car is stationary, the engine will idle, which in turn consumes fuel and generates emissions. The Stop/start system cleverly cuts out this unnecessary work by stopping the engine automatically when the car is stationary, in neutral and the clutch pedal is released.

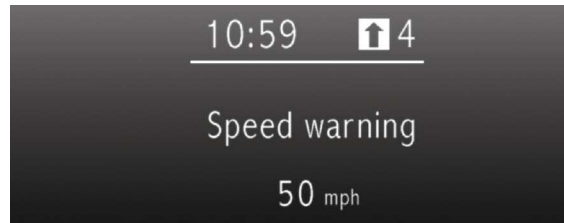
The Stop/start system does not inhibit a quick getaway either. As soon as the driver presses the clutch to put the vehicle in gear, the engine immediately starts up so acceleration is as instant as if the car had been idling.



**Aerodynamics.** One of the simplest ways to improve fuel efficiency and reduce emissions, is to create a more aero-dynamic vehicle. The Fabia GreenLine II model has changes to the rear spoiler that improve the car's efficiency without compromising on style.

To keep the weight and drag of the GreenLine II models down to a minimum and thus ensure the model is as efficient as possible, there is a reduced list of options available.

However, the comfort and safety of all occupants has not been compromised and so important features like airbags and air conditioning have been retained.



**Gear change recommendations.** The recommended gear feature on the trip computer or Maxi-dot display shows the driver whether the gear they are in is appropriate or whether they need to change up or down.

The aim is to help the driver achieve optimum engine speed and reduce fuel consumption.

## The ŠKODA Fabia GreenLine II

Hatchback	CO <sub>2</sub> (g/km)	VED Band**	Insurance Group (50)	Recommended Basic	VAT	RRP	Recommended OTR*	Business user information	
								BiK 2013/14	P11D Value
1.2 TDI CR 75PS 5spd DPF	89	A	8E	£11,091.67	£2,218.33	£13,310.00	£13,875.00	13%	£13,820.00
Estate									
1.2 TDI CR 75PS 5spd DPF	89	A	8E	£11,604.17	£2,320.83	£13,925.00	£14,490.00	13%	£14,435.00

### Standard Equipment (over Fabia S)

15" 'Antares' alloys with anti theft locking wheel bolts (6J x 15" 185/60 R15 84H) Low rolling resistance tyres  
Additional 4 speakers in rear  
Black roof rails (Estate only)  
Body coloured handles and door mirrors  
Category 1 alarm with tilt sensor  
Chrome surround on radiator grille  
Cruise control  
Electrically heated and adjustable door mirrors  
Energy recovery  
ESC Inc. ABS+ASR+EDL+HBA  
Front fog lights  
Gear change recommendation  
Glovebox cover

Halogen headlights with DE module  
Height adjustable passenger seat  
Hill hold control  
Load securing loops in luggage space  
Manual air conditioning  
MDI (Multi device interface) and cable for connecting MP3 players†  
Rear disc brakes  
Side and rear windows in tinted glass  
Stop/start function  
Tinted windscreen  
Trip computer  
Tyre pressure monitor (TPM)  
Tyre repair kit (spare wheel not available)

For offers visit [www.skoda.co.uk/offers](http://www.skoda.co.uk/offers)

† Retailer supplied



Band	CO <sub>2</sub> (g/km)	First 12 Months <sup>1</sup>	Standard VED <sup>2</sup>
A	Up to 100	£0	£0
B	101 - 110	£0	£20
C	111 - 120	£0	£30
D	121 - 130	£0	£100
E	131 - 140	£120	£120
F	141 - 150	£135	£135
G	151 - 165	£170	£170
H	166 - 175	£275	£195
I	176 - 185	£325	£215
J	186 - 200	£460	£250
K	201 - 225	£600	£270
L	226 - 255	£815	£460
M	Over 255	£1,030	£475

### OTR (Recommended On The Road)

\* Recommended 'On the Road' prices include delivery, 12 months Road Fund Licence, DVLA First registration Fee (at £55), and apply to the United Kingdom only.

### VED (Vehicle Excise Duty)

\*\* All vehicles will be subject to Vehicle Excise Duty based on the fuel type of the vehicle and its carbon dioxide (CO<sub>2</sub>) emissions level, measured in grams per kilometre (g/km). Due to changes in vehicle emissions data, CO<sub>2</sub> figures may differ on these vehicles if taken from current ŠKODA UK stock. The VED bands are shown in the table opposite.

<sup>1</sup>First year vehicle licence rates for petrol and diesel cars purchased on or after 1st April 2012. First year rate or 'showroom tax' applies to new car purchases only.

<sup>2</sup>Rate reverts to the Government's applicable Standard VED rate in subsequent years.

Edition: UK 1st April 2012. VAT is calculated at 20%. VED bands may change on 1st April 2013. Due to printing timescales, the VED figures in this brochure may be out of date after 1st April 2013. Please confirm figures with your ŠKODA retailer.

Company car tax is based on your cars carbon dioxide emissions. The higher the car's emissions, the higher its tax liability. When a company car is made available for private use a 'Benefit in Kind' value is calculated for tax purposes.

To help you work out your tax liability please refer to page 30.

### P11D (Expenses and Benefits)

The P11D value is calculated by taking the On The Road (OTR) price for the vehicle, less the Road Fund Licence (RFL) and First Registration Fee (FRF).

BiK (Benefit in Kind)  
The BiK percentage value is based on the CO<sub>2</sub> emissions of the vehicle for the current tax year 2013/2014.

## The ŠKODA Fabia SE

Hatchback	CO <sub>2</sub> (g/km)	VED Band**	Insurance Group (50)	Recommended Basic	VAT	RRP	Recommended OTR*	Business user information	
								BiK 2013/14	P11D Value
1.2 12V 69PS 5spd	128	D	5E	£9,087.50	£1,817.50	£10,905.00	£11,470.00	17%	£11,415.00
1.2 TSI 86PS 5spd	121	D	9E	£9,562.50	£1,912.50	£11,475.00	£12,040.00	16%	£11,985.00
1.2 TSI 105PS 5spd *	124	D	13E	£10,112.50	£2,022.50	£12,135.00	£12,700.00	16%	£12,645.00
1.2 TSI 105PS 7spd DSG	124	D	13E	£10,837.50	£2,167.50	£13,005.00	£13,570.00	16%	£13,515.00
1.6 TDI CR 75PS 5spd DPF	109	B	8E	£10,241.67	£2,048.33	£12,290.00	£12,855.00	16%	£12,800.00
1.6 TDI CR 90PS 5spd DPF *	109	B	12E	£10,733.33	£2,146.67	£12,880.00	£13,445.00	16%	£13,390.00
1.6 TDI CR 105PS 5spd DPF	109	B	14E	£10,920.83	£2,184.17	£13,105.00	£13,670.00	16%	£13,615.00

Estate	CO <sub>2</sub> (g/km)	VED Band**	Insurance Group (50)	Recommended Basic	VAT	RRP	Recommended OTR*	Business user information	
								BiK 2013/14	P11D Value
1.2 12V 69PS 5spd *	128	D	5E	£9,758.33	£1,951.67	£11,710.00	£12,275.00	17%	£12,220.00
1.2 TSI 86PS 5spd	121	D	9E	£10,270.83	£2,054.17	£12,325.00	£12,890.00	16%	£12,835.00
1.2 TSI 105PS 5spd	124	D	13E	£10,820.83	£2,164.17	£12,985.00	£13,550.00	16%	£13,495.00
1.2 TSI 105PS 7spd DSG	124	D	13E	£11,545.83	£2,309.17	£13,855.00	£14,420.00	16%	£14,365.00
1.6 TDI CR 75PS 5spd DPF *	109	B	8E	£10,950.00	£2,190.00	£13,140.00	£13,705.00	16%	£13,650.00
1.6 TDI CR 90PS 5spd DPF	109	B	12E	£11,441.67	£2,288.33	£13,730.00	£14,295.00	16%	£14,240.00
1.6 TDI CR 105PS 5spd DPF	109	B	14E	£11,629.17	£2,325.83	£13,955.00	£14,520.00	16%	£14,465.00

\* Stock vehicles only please consult your retailer.

### Standard Equipment (over Fabia S)

15" 'Antares' alloys with anti-theft locking wheel bolts (6j x 15" 195/55 R15 85H)	Glovebox cover
12V socket in boot (Estate only)	Halogen projector headlights with DE module
Additional 4 speakers in rear	Height adjustable passenger seat
Black roof rails (Estate only)	Leather gearknob (DSG only)
Body coloured door handles and mirrors	Load securing loops in luggage space
Category 1 alarm with tilt sensor	Manual air conditioning
Chrome surround on radiator grille	Side and rear windows in tinted glass
Electrically heated and adjustable door mirrors	Stowage box in boot
	Tinted windscreen
	Trip computer

For offers visit [www.skoda.co.uk/offers](http://www.skoda.co.uk/offers)



## The ŠKODA Fabia Elegance

Hatchback	CO <sub>2</sub> (g/km)	VED Band**	Insurance Group (50)	Recommended Basic	VAT	RRP	Recommended OTR*	Business user information	
								BiK 2013/14	P11D Value
1.2 12V 69PS 5spd *	128	D	5E	£9,954.17	£1,990.83	£11,945.00	£12,510.00	17%	£12,455.00
1.2 TSI 86PS 5spd *	121	D	9E	£10,466.67	£2,093.33	£12,560.00	£13,125.00	16%	£13,070.00
1.2 TSI 105PS 5spd	124	D	13E	£11,016.67	£2,203.33	£13,220.00	£13,785.00	16%	£13,730.00
1.2 TSI 105PS 7spd DSG	124	D	13E	£11,741.67	£2,348.33	£14,090.00	£14,655.00	16%	£14,600.00
1.6 TDI CR 75PS 5spd DPF *	109	B	8E	£11,145.83	£2,229.17	£13,375.00	£13,940.00	16%	£13,885.00
1.6 TDI CR 90PS 5spd DPF	109	B	12E	£11,637.50	£2,327.50	£13,965.00	£14,530.00	16%	£14,475.00
1.6 TDI CR 105PS 5spd DPF	109	B	14E	£11,825.00	£2,365.00	£14,190.00	£14,755.00	16%	£14,700.00

Estate	CO <sub>2</sub> (g/km)	VED Band**	Insurance Group (50)	Recommended Basic	VAT	RRP	Recommended OTR*	Business user information	
								BiK 2013/14	P11D Value
1.2 12V 69PS 5spd *	128	D	5E	£10,662.50	£2,132.50	£12,795.00	£13,360.00	17%	£13,305.00
1.2 TSI 86PS 5spd *	121	D	9E	£11,175.00	£2,235.00	£13,410.00	£13,975.00	16%	£13,920.00
1.2 TSI 105PS 5spd	124	D	13E	£11,725.00	£2,345.00	£14,070.00	£14,635.00	16%	£14,580.00
1.2 TSI 105PS 7spd DSG	124	D	13E	£12,450.00	£2,490.00	£14,940.00	£15,505.00	16%	£15,450.00
1.6 TDI CR 75PS 5spd DPF *	109	B	8E	£11,854.17	£2,370.83	£14,225.00	£14,790.00	16%	£14,735.00
1.6 TDI CR 90PS 5spd DPF *	109	B	12E	£12,345.83	£2,469.17	£14,815.00	£15,380.00	16%	£15,325.00
1.6 TDI CR 105PS 5spd DPF	109	B	14E	£12,533.33	£2,506.67	£15,040.00	£15,605.00	16%	£15,550.00

\* Stock vehicles only please consult your retailer.

### Standard Equipment (over SE)

16" 'Comet' alloys with anti-theft locking wheel bolts (6.5j x 16" 205/45 R16 83W)	Cruise control
4 spoke leather steering wheel, gearknob and gaiter	Curtain airbags
Air conditioned glovebox	Floor mats
Black protective side mouldings	Front armrest
Climate control air conditioning	Front fog lights
	Glasses storage compartment
	Maxi-dot trip computer

For offers visit [www.skoda.co.uk/offers](http://www.skoda.co.uk/offers)

A temporary space saver wheel can be ordered as an option. If added the tyre repair kit will be removed. For further details please check page 22.

Band	CO <sub>2</sub> (g/km)	First 12 Months <sup>1</sup> VED <sup>2</sup>	Standard VED <sup>2</sup>
A	Up to 100	£0	£0
B	101 - 110	£0	£20
C	111 - 120	£0	£30
D	121 - 130	£0	£100
E	131 - 140	£120	£120
F	141 - 150	£135	£135
G	151 - 165	£170	£170
H	166 - 175	£275	£195
I	176 - 185	£325	£215
J	186 - 200	£460	£250
K	201 - 225	£600	£270
L	226 - 255	£815	£460
M	Over 255	£1,030	£475

### OTR (Recommended On The Road)

\* Recommended 'On the Road' prices include delivery, 12 months Road Fund Licence, DVLA First registration Fee (at £55), and apply to the United Kingdom only.

### VED (Vehicle Excise Duty)

\*\* All vehicles will be subject to Vehicle Excise Duty based on the fuel type of the vehicle and its carbon dioxide (CO<sub>2</sub>) emissions level, measured in grams per kilometre (g/km). Due to changes in vehicle emissions data, CO<sub>2</sub> figures may differ on these vehicles if taken from current ŠKODA UK stock. The VED bands are shown in the table opposite.

<sup>1</sup>First year vehicle licence rates for petrol and diesel cars purchased on or after 1st April 2012. First year rate or 'showroom tax' applies to new car purchases only.

<sup>2</sup>Rate reverts to the Government's applicable Standard VED rate in subsequent years.

Edition: UK 1st April 2012. VAT is calculated at 20%. VED bands may change on 1st April 2013. Due to printing timescales, the VED figures in this brochure may be out of date after 1st April 2013. Please confirm figures with your ŠKODA retailer.

Company car tax is based on your cars carbon dioxide emissions. The higher the car's emissions, the higher its tax liability. When a company car is made available for private use a 'Benefit in Kind' value is calculated for tax purposes.

To help you work out your tax liability please refer to page 30.

### P11D (Expenses and Benefits)

The P11D value is calculated by taking the On The Road (OTR) price for the vehicle, less the Road Fund Licence (RFL) and First Registration Fee (FRF).

BiK (Benefit in Kind)  
The BiK percentage value is based on the CO<sub>2</sub> emissions of the vehicle for the current tax year 2013/2014.



## The ŠKODA Fabia Scout

Estate	CO <sub>2</sub> (g/km)	VED Band**	Insurance Group (50)	Recommended Basic	VAT	RRP	Recommended OTR*	Business user information BiK 2013/14	P11D Value
1.2 TSI 86PS 5spd	121	D	9E	£11,254.17	£2,250.83	£13,505.00	£14,070.00	16%	£14,015.00
1.6 TDI CR 75PS 5spd DPF ♦	109	B	8E	£11,933.33	£2,386.67	£14,320.00	£14,885.00	16%	£14,830.00
1.6 TDI CR 90PS 5spd DPF ♦	109	B	12E	£12,425.00	£2,485.00	£14,910.00	£15,475.00	16%	£15,420.00
1.6 TDI CR 105PS 5spd DPF	109	B	15E	£12,612.50	£2,522.50	£15,135.00	£15,700.00	16%	£15,645.00

♦ Stock vehicles only please consult your retailer.

### Standard equipment (over Fabia SE)

16" 'Scout' alloys (6.5) x 16" 205/45 R16 83W)	Integrated front fog lights
3 spoke leather steering wheel, handbrake and gearknob	Protective body mouldings
Cruise control	'Scout' design textile floor mats
Electric rear windows	'Scout' upholstery
ESC Inc. ABS+ASR+EDL+HBA	Silver coloured roof rails
Front armrest	Stainless steel pedal set
	Sunset glass (from the B-pillar back)

For offers visit [www.skoda.co.uk/offers](http://www.skoda.co.uk/offers)

A temporary space saver wheel can be ordered as an option. If added the tyre repair kit will be removed. For further details please check page 22.

Band	CO <sub>2</sub> (g/km)	First 12 Months <sup>1</sup>	Standard VED <sup>2</sup>
A	Up to 100	£0	£0
B	101 - 110	£0	£20
C	111 - 120	£0	£30
D	121 - 130	£0	£100
E	131 - 140	£120	£120
F	141 - 150	£135	£135
G	151 - 165	£170	£170
H	166 - 175	£275	£195
I	176 - 185	£325	£215
J	186 - 200	£460	£250
K	201 - 225	£600	£270
L	226 - 255	£815	£460
M	Over 255	£1,030	£475

### OTR (Recommended On The Road)

\* Recommended 'On the Road' prices include delivery, 12 months Road Fund Licence, DVLA First registration Fee (at £55), and apply to the United Kingdom only.

### VED (Vehicle Excise Duty)

\*\* All vehicles will be subject to Vehicle Excise Duty based on the fuel type of the vehicle and its carbon dioxide (CO<sub>2</sub>) emissions level, measured in grams per kilometre (g/km). Due to changes in vehicle emissions data, CO<sub>2</sub> figures may differ on these vehicles if taken from current ŠKODA UK stock. The VED bands are shown in the table opposite.

<sup>1</sup>First year vehicle licence rates for petrol and diesel cars purchased on or after 1st April 2012. First year rate or 'showroom tax' applies to new car purchases only.

<sup>2</sup>Rate reverts to the Government's applicable Standard VED rate in subsequent years.

Edition: UK 1st April 2012. VAT is calculated at 20%. VED bands may change on 1st April 2013. Due to printing timescales, the VED figures in this brochure may be out of date after 1st April 2013. Please confirm figures with your ŠKODA retailer.

Company car tax is based on your cars carbon dioxide emissions. The higher the car's emissions, the higher its tax liability. When a company car is made available for private use a 'Benefit in Kind' value is calculated for tax purposes.

To help you work out your tax liability please refer to page 30.

### P11D (Expenses and Benefits)

The P11D value is calculated by taking the On The Road (OTR) price for the vehicle, less the Road Fund Licence (RFL) and First Registration Fee (FRF).

BiK (Benefit in Kind)  
The BiK percentage value is based on the CO<sub>2</sub> emissions of the vehicle for the current tax year 2013/2014.





# The ŠKODA Fabia Monte Carlo

Hatchback	CO <sub>2</sub> (g/km)	VED Band**	Insurance Group (50)	Recommended Basic	VAT	RRP	Recommended OTR*	Business user information BiK 2013/14	P11D Value
1.2 69PS 5spd ♦	128	D	5E	£10,316.67	£2,063.33	£12,380.00	£12,945.00	17%	£12,890.00
1.2 TSI 86PS 5spd	121	D	9E	£10,829.17	£2,165.83	£12,995.00	£13,560.00	16%	£13,505.00
1.2 TSI 105PS 5spd	124	D	13E	£11,379.17	£2,275.83	£13,655.00	£14,220.00	16%	£14,165.00
1.6 TDI CR 75PS 5spd ♦	109	B	9E	£11,508.33	£2,301.67	£13,810.00	£14,375.00	16%	£14,320.00
1.6 TDI CR 105PS 5spd	109	B	15E	£12,187.50	£2,437.50	£14,625.00	£15,190.00	16%	£15,135.00

♦ Stock vehicles only please consult your retailer.

## Standard Equipment

17" 'Trinity' alloys (7) x 17" 205/40 R17 84W)	Driver door mirror (aspherical) provides an increased field of view. Passenger convex.	MDI (Multi Device Interface) and cable for connecting MP3 players††
1.5-litre drinks holder in front door panels	Driver seat belt warning light	Perforated leather sports steering wheel with red stitching
3.5mm aux. socket (for MP3 players etc.)	Electric front windows	Pollen filter
3 point seat belts with seat belt tensioners and height adjustment (front).	Electrically heated and adjustable door mirrors	Power steering
3 point seat belts (rear)	Exterior temperature gauge	Preparation for ISOFIX
8 speakers	Folding grab handles in the roof frame	Radio 'Swing' 2DIN with single CD, can play MP3 recordings
ABS (Anti-lock Braking System)	Front and side windows in tinted glass	Rear diffuser (black)
Black gloss door mirrors	Front fog lights	Rear drum brakes
Black gloss wheel arch and front spoiler mouldings	Glovebox cover	Rear fog light
Black roof and tailgate spoiler	Headlight range adjustment	Rear wiper with intermittent control
Black smoked halogen projector headlights with DE module	Heated rear window	Remote central locking
Body coloured bumpers and door handles	Height adjustable driver and passenger seats	Roof aerial with second antenna in windscreen for FM2 signal
Category 1 alarm with tilt sensor	Height adjustable head restraints (front & rear x2)	Split folding rear seats (60%/40%)
Darkened chrome on top of radiator grille	Height and reach adjustable steering wheel	Sports seats (Onyx)
Delayed interior lighting	Interior rear view mirror with dimming facility	Sports suspension
Driver and passenger front and side airbags with passenger airbag de-activation switch	Leather gearknob and handbrake with red stitching	Steel sports pedals and kick plate
Driver and passenger vanity mirrors	Load securing loops in luggage space	Stowage box in boot
	Manual air conditioning	Sunset glass (from B-pillar back)
		Ticket holder
		Trip computer
		Tyre repair kit (no spare wheel)†
		Windscreen wiper with Intermittent control (4 speed)

For offers visit [www.skoda.co.uk/offers](http://www.skoda.co.uk/offers)

† A temporary 'Space saver' spare wheel can be ordered as an option. If added the tyre repair kit will be removed. For further details please check page 22.

†† Retailer supplied



Band	CO <sub>2</sub> (g/km)	First 12 Months <sup>1</sup> VED <sup>2</sup>	Standard VED <sup>2</sup>
A	Up to 100	£0	£0
B	101 - 110	£0	£20
C	111 - 120	£0	£30
D	121 - 130	£0	£100
E	131 - 140	£120	£120
F	141 - 150	£135	£135
G	151 - 165	£170	£170
H	166 - 175	£275	£195
I	176 - 185	£325	£215
J	186 - 200	£460	£250
K	201 - 225	£600	£270
L	226 - 255	£815	£460
M	Over 255	£1,030	£475

### OTR (Recommended On The Road)

\* Recommended 'On the Road' prices include delivery, 12 months Road Fund Licence, DVLA First registration Fee (at £55), and apply to the United Kingdom only.

### VED (Vehicle Excise Duty)

\*\* All vehicles will be subject to Vehicle Excise Duty based on the fuel type of the vehicle and its carbon dioxide (CO<sub>2</sub>) emissions level, measured in grams per kilometre (g/km). Due to changes in vehicle emissions data, CO<sub>2</sub> figures may differ on these vehicles if taken from current ŠKODA UK stock. The VED bands are shown in the table opposite.

<sup>1</sup>First year vehicle licence rates for petrol and diesel cars purchased on or after 1st April 2012. First year rate or 'showroom tax' applies to new car purchases only.

<sup>2</sup>Rate reverts to the Government's applicable Standard VED rate in subsequent years.

Edition: UK 1st April 2012. VAT is calculated at 20%. VED bands may change on 1st April 2013. Due to printing timescales, the VED figures in this brochure may be out of date after 1st April 2013. Please confirm figures with your ŠKODA retailer.

Company car tax is based on your cars carbon dioxide emissions. The higher the car's emissions, the higher its tax liability. When a company car is made available for private use a 'Benefit in Kind' value is calculated for tax purposes.

To help you work out your tax liability please refer to page 30.

### P11D (Expenses and Benefits)

The P11D value is calculated by taking the On The Road (OTR) price for the vehicle, less the Road Fund Licence (RFL) and First Registration Fee (FRF).

BiK (Benefit in Kind)  
The BiK percentage value is based on the CO<sub>2</sub> emissions of the vehicle for the current tax year 2013/2014.



# The ŠKODA Fabia vRS

Hatchback	CO <sub>2</sub> (g/km)	VED Band**	Insurance Group (50)	Recommended Basic	VAT	RRP	Recommended OTR*	Business user information BiK 2013/14	P11D Value
1.4 TSI 180PS 7spd DSG	148	F	27E	£13,704.17	£2,740.83	£16,445.00	£17,145.00	21%	£16,955.00
Estate									
1.4 TSI 180PS 7spd DSG	148	F	27E	£14,412.50	£2,882.50	£17,295.00	£17,995.00	21%	£17,805.00

## Standard equipment

- 17" 'Gigaro' alloy wheels (7) x 17" 205/40 R17 84W
- 12V socket in boot (Estate only)
- 3 point seat belts with seat belt tensioners and height adjustment (front)
- 3 spoke multi-function leather sports steering wheel with paddles and controls for radio
- Black gloss front grille
- Black gloss headlights
- Black painted door mirrors
- Black roof rails (Estate only)
- Body coloured bumpers
- Body coloured door handles
- Category 1 alarm with tilt sensor
- Chrome kick plates in front door sills
- Delayed interior lighting
- Driver and passenger vanity mirrors
- Driver door mirror (aspherical) providing an increased field of view
- Driver seat belt warning light
- Electric front windows
- Electrically heated and adjustable door mirrors
- ESC+HHC+TPM+XDS (ESC with Hill Hold Control, Tyre Pressure Monitor and Electronically Controlled Differential)
- Folding grab handles in the roof frame
- Glovebox cover
- Halogen projector headlights with DE module
- Headlight range adjustment
- Heated rear window
- Height adjustable driver and passenger seat
- Height adjustable headrests in rear (two)
- Interior rear view mirror with dimming facility
- Leather gearknob
- Leather hand brake
- LED daylight running lights
- Load securing loops in luggage space
- Manual air conditioning
- Maxi-dot trip computer
- MDI (Multi device interface) and cable for connecting MP3 players†
- Pollen filter
- Radio 'Swing' 2DIN CD and 8 speakers (can play MP3 recordings)
- Rear chrome double exhaust pipe
- Rear fog light
- Rear tailgate spoiler
- Rear wiper with intermittent control
- Rear disc brakes with red brake callipers
- Remote central locking with alarm and tilt sensor
- Retractable parcel shelf (Estate only)
- Sports suspension
- Steel sports pedals
- Sunset glass (from the B-pillar back)
- Temporary 'Space saver' spare wheel
- vRS Bodykit
- vRS sports seats with logo
- Windscreen wiper with Intermittent control (4 speeds)



Band	CO <sub>2</sub> (g/km)	First 12 Months <sup>1</sup> VED <sup>2</sup>	Standard VED <sup>2</sup>
A	Up to 100	£0	£0
B	101 - 110	£0	£20
C	111 - 120	£0	£30
D	121 - 130	£0	£100
E	131 - 140	£120	£120
F	141 - 150	£135	£135
G	151 - 165	£170	£170
H	166 - 175	£275	£195
I	176 - 185	£325	£215
J	186 - 200	£460	£250
K	201 - 225	£600	£270
L	226 - 255	£815	£460
M	Over 255	£1,030	£475

### OTR (Recommended On The Road)

\* Recommended 'On the Road' prices include delivery, 12 months Road Fund Licence, DVLA First registration Fee (at £55), and apply to the United Kingdom only.

### VED (Vehicle Excise Duty)

\*\* All vehicles will be subject to Vehicle Excise Duty based on the fuel type of the vehicle and its carbon dioxide (CO<sub>2</sub>) emissions level, measured in grams per kilometre (g/km). Due to changes in vehicle emissions data, CO<sub>2</sub> figures may differ on these vehicles if taken from current ŠKODA UK stock. The VED bands are shown in the table opposite.

<sup>1</sup>First year vehicle licence rates for petrol and diesel cars purchased on or after 1st April 2012. First year rate or 'showroom tax' applies to new car purchases only.

<sup>2</sup>Rate reverts to the Government's applicable Standard VED rate in subsequent years.

Edition: UK 1st April 2012. VAT is calculated at 20%. VED bands may change on 1st April 2013. Due to printing timescales, the VED figures in this brochure may be out of date after 1st April 2013. Please confirm figures with your ŠKODA retailer.

Company car tax is based on your cars carbon dioxide emissions. The higher the car's emissions, the higher its tax liability. When a company car is made available for private use a 'Benefit in Kind' value is calculated for tax purposes.

To help you work out your tax liability please refer to page 30.

### P11D (Expenses and Benefits)

The P11D value is calculated by taking the On The Road (OTR) price for the vehicle, less the Road Fund Licence (RFL) and First Registration Fee (FRF).

BiK (Benefit in Kind)  
The BiK percentage value is based on the CO<sub>2</sub> emissions of the vehicle for the current tax year 2013/2014.

For offers visit [www.skoda.co.uk/offers](http://www.skoda.co.uk/offers)

† Retailer supplied



## Factory Fitted Optional Equipment

Option	S		GreenLine II		SE		Elegance	
	Basic	RRP	Basic	RRP	Basic	RRP	Basic	RRP
Bicycle holder in luggage compartment (Estate only)	£141.67	£170	-	-	£141.67	£170	£141.67	£170
Electric sunroof	-	-	-	-	£329.17	£395	£329.17	£395
Glovebox cover	£41.67	£50	std	std	std	std	std	std
Partial leather upholstery †††	-	-	-	-	£508.33	£610	£508.33	£610
Smoker's pack	£33.33	£40	£33.33	£40	£33.33	£40	£33.33	£40
Temporary spare steel wheel / 'Space saver' steel wheel ††	£54.17	£65	-	-	£54.17	£65	£54.17	£65
Textile floor mats	£41.67	£50	£41.67	£50	£41.67	£50	std	std
Third rear headrest	£58.33	£70	£58.33	£70	£58.33	£70	£58.33	£70
Variable boot floor (Estate only)	-	-	-	-	£120.83	£145	£120.83	£145

Steering wheels & Bluetooth®								
3 spoke leather steering wheel and small leather pack †	-	-	-	-	£216.67	£260	£75.00	£90
3 spoke MFSW for radio and small leather pack †	-	-	-	-	£250.00	£300	£116.67	£140
3 spoke MFSW for radio and telephone and small leather pack †*	-	-	-	-	£266.67	£320	£133.33	£160
4 spoke leather steering wheel and small leather pack †	£150.00	£180	£150.00*	£180*	-	-	std	std
4 spoke MFSW for radio and small leather pack †	-	-	£183.33*	£220*	-	-	-	-
4 spoke MFSW for telephone and radio and small leather pack †*	-	-	£200.00*	£240*	-	-	-	-
Telephone preparation GSM II with Bluetooth®	-	-	£283.33*	£340*	£283.33	£340	£200.00	£240

Exterior								
Black protective side mouldings	£41.67	£50	£41.67	£50	£41.67	£50	std	std
Black (vRS) / White roof **	£312.50	£375	-	-	£312.50	£375	£312.50	£375
Black roof rails (Estate only)	£187.50	£225	std	std	std	std	std	std
Black / Silver roof rails (Estate only)	-	-	-	-	£120.83	£145	£120.83	£145
Metallic / Pearl effect paint / Sprint Yellow	£412.50	£495	£412.50	£495	£412.50	£495	£412.50	£495
Sunset glass (from B-pillar back)	£229.17	£275	£229.17	£275	£150.00	£180	£150.00	£180
Silver roof (Hatch Only for Anthracite Grey, Black Magic, Storm Blue)	-	-	-	-	£695.83	£835.00	£695.83	£835.00
Silver roof (Hatch Only Pacific Blue)	-	-	-	-	£312.50	£375.00	£312.50	£375.00

Alloys								
15" 'Antares' alloys	£358.33	£430	-	-	std	std	-	-
16" 'Noid' alloys (6.5J x 16" 205/45 R16 83W)	-	-	-	-	£191.67	£230	-	-
16" 'Elba' alloys (6.5J x 16" 205/45 R16 83W)	-	-	-	-	£191.67	£230	FOC	FOC
17" 'Gigaro' Black alloys (7J x 17" 205/40 R17 7J x 17 ET41)	-	-	-	-	-	-	-	-
17" 'Gigaro' Dark Chrome alloys (7J x 17" 205/40 R17 7J x 17 ET41)	-	-	-	-	-	-	-	-
17" 'Gigaro' White alloys (7J x 17" 205/40 R17 7J x 17 ET41)	-	-	-	-	-	-	-	-
17" 'Scout' alloys (7J x 17" 205/40 R17 84W)	-	-	-	-	-	-	-	-

**Note:** MFSW - Multi-function Steering Wheel.

\* Not available on GreenLine II Estate

† 'Feinappa' leather on gear knob and handbrake, and leatherette on gearstick surround.

†† Dependant on trim and optional wheel fitted. Please consult your Retailer for details.

††† Must be ordered in conjunction with a three spoke, four spoke or MFSW.

\*\* Available on Hatch only and selected colours see page 20 for details.

◆ Requires Bluetooth®

◆◆ The white roof option is only available on vRS Hatch and selected body colours. See page 20 for details.

Monte Carlo		vRS		Scout	
Basic	RRP	Basic	RRP	Basic	RRP
-	-	£141.67	£170	£141.67	£170
£329.17	£395	£329.17	£395	£329.17	£395
std	std	std	std	std	std
-	-	-	-	£508.33	£610
£33.33	£40	£33.33	£40	£33.33	£40
£54.17	£65	std	std	£54.17	£65
£41.67	£50	£41.67	£50	std	std
£58.33	£70	£58.33	£70	£58.33	£70
-	-	£120.83	£145	£120.83	£145

-	-	-	-	std	std
-	-	-	-	£54.17	£65
-	-	£137.50	£165	£79.17	£95
-	-	-	-	-	-
-	-	-	-	-	-
-	-	-	-	-	-
£283.33	£340	£200.00	£240	£283.33	£340

-	-	-	-	-	-
-	-	£312.50	£375	-	-
-	-	-	-	-	-
-	-	-	-	std	std
£412.50	£495	£412.50	£495	£412.50	£495
std	std	std	std	std	std
-	-	-	-	-	-
-	-	-	-	-	-

-	-	-	-	-	-
-	-	-	-	-	-
-	-	-	-	-	-
-	-	£95.83	£115	-	-
-	-	£95.83	£115	-	-
-	-	£95.83	£115	-	-
-	-	-	-	£270.83	£325



Curtain airbags



Third rear headrest



Multi-function steering wheel for vRS



## Factory Fitted Optional Equipment (continued)

Option	S		GreenLine II		SE		Elegance	
	Basic	RRP	Basic	RRP	Basic	RRP	Basic	RRP
<b>Safety &amp; Security</b>								
Alarm with interior monitoring	£241.67	£290	std	std	std	std	std	std
Cornering front fog lights	-	-	-	-	£204.17	£245	£83.33	£100
Curtain Airbags	£208.33	£250	£208.33	£250	£208.33	£250	std	std
Curve projector halogen headlights including cornering front fog lights	-	-	-	-	-	-	£233.33	£280
ESC Inc. ABS +ASR+EDL+HBA	£308.33	£370	-	-	£308.33	£370	£308.33	£370
ESC Plus (ESC inc. TPM+HHC)	-	-	std	std	£404.17	£485	£404.17	£485
Front fog lights	£141.67	£170	std	std	£141.67	£170	std	std
Tyre Pressure monitor - TPM (DSG only)	-	-	std	std	£83.33	£100	£83.33	£100
<b>Comfort &amp; Convenience</b>								
Acoustic rear parking sensors	-	-	£237.50	£285	£237.50	£285	£237.50	£285
'Amundsen' satellite navigation system Inc. maps for Western Europe	-	-	£445.83*	£535*	£445.83	£535	£445.83	£535
Climate control air conditioning	-	-	£233.33	£280	£233.33	£280	std	std
Cruise control	-	-	std	std	£145.83	£175	std	std
Front armrest	-	-	-	-	£75.00	£90	std	std
Glasses storage compartment	-	-	-	-	-	-	std	std
Heated front seats	£141.67	£170	£141.67*	£170*	£141.67	£170	£141.67	£170
Integrated headlight washers	£79.17	£95	-	-	£79.17	£95	£79.17	£95
LED Daytime running lights	-	-	-	-	-	-	-	-
Manual air conditioning	£466.67	£560	std	std	std	std	std	std
MDI (Multi Device Interface)	-	-	std	std	£145.83	£175	£145.83	£175
Maxi-dot trip computer	-	-	£133.33	£160	£133.33	£160	std	std
Rear electric windows	-	-	£133.33	£160	£133.33	£160	£133.33	£160
Sports suspension (Standard on Hatch optional on Estate)	£87.50	£105	£87.50	£105	£87.50	£105	£87.50	£105
Storage box under drivers seat	-	-	-	-	£33.33	£40	£33.33	£40
- under passenger seat	£33.33	£40	-	-	£33.33	£40	£33.33	£40
- front seats	£50.00	£60	-	-	£50.00	£60	£50.00	£60
<b>Towing</b>								
Towbar, removeable and lockable**	£266.67	£320	-	-	£266.67	£320	£266.67	£320
Towbar, preparation	£95.83	£115	-	-	£95.83	£115	£95.83	£115
<b>Extended warranty</b>								
4 years / 80,000 miles †	£133.33	£160	£133.33	£160	£133.33	£160	£133.33	£160
5 years / 100,000 miles †	£245.83	£295	£245.83	£295	£245.83	£295	£245.83	£295

\* Not available on GreenLine II Estate

\*\* The factory tow bar provides a complete single electrics solution via a 13 pin socket. No further accessories are required, but a 13 pin to 7 pin adapter is available if required - please contact your retailer for more details.

† For terms and conditions please see page 31

Option	Monte Carlo		vRS		Scout	
	Basic	RRP	Basic	RRP	Basic	RRP
<b>Monte Carlo</b>						
Alarm with interior monitoring	std	std	std	std	std	std
Cornering front fog lights	-	-	-	-	-	-
Curtain Airbags	£208.33	£250	std	std	£208.33	£250
Curve projector halogen headlights including cornering front fog lights	-	-	-	-	-	-
ESC Inc. ABS +ASR+EDL+HBA	£308.33	£370	-	-	-	-
ESC Plus (ESC inc. TPM+HHC)	£404.17	£485	std	std	£129.17	£155
Front fog lights	std	std	-	-	std	std
Tyre Pressure monitor - TPM (DSG only)	£83.33	£100	std	std	£83.33	£100
<b>vRS</b>						
Acoustic rear parking sensors	£237.50	£285	£237.50	£285	£237.50	£285
'Amundsen' satellite navigation system Inc. maps for Western Europe	£445.83	£535	£445.83	£535	£445.83	£535
Climate control air conditioning	£233.33	£280	£233.33	£280	£233.33	£280
Cruise control	£145.83	£175	£145.83	£175	std	std
Front armrest	£75.00	£90	£75.00	£90	std	std
Glasses storage compartment	-	-	£20.83	£25	£20.83	£25
Heated front seats	£141.67	£170	£141.67	£170	£141.67	£170
Integrated headlight washers	£79.17	£95	£79.17	£95	£79.17	£95
LED Daytime running lights	-	-	std	std	£83.33	£100
Manual air conditioning	std	std	std	std	std	std
MDI (Multi Device Interface)	std	std	std	std	£145.83	£175
Maxi-dot trip computer	£133.33	£160	-	-	£133.33	£160
Rear electric windows	£133.33	£160	£133.33	£160	std	std
Sports suspension (Standard on Hatch optional on Estate)	std	std	std	std	-	-
Storage box under drivers seat	£33.33	£40	£33.33	£40	£33.33	£40
- under passenger seat	£33.33	£40	£33.33	£40	£33.33	£40
- front seats	£50.00	£60	£50.00	£60	£50.00	£60
<b>Scout</b>						
Alarm with interior monitoring	-	-	-	-	£266.67	£320
Cornering front fog lights	-	-	-	-	£95.83	£115
Curtain Airbags	£133.33	£160	£133.33	£160	£133.33	£160
Curve projector halogen headlights including cornering front fog lights	£245.83	£295	£245.83	£295	£245.83	£295



Satellite Navigation 'Amundsen'



Multi Device Interface



Silver roof rails



Cruise control



## The ŠKODA Fabia colours

### Standard



1. Candy White



2. Corrida Red



3. Pacific Blue ††



4. Sprint Yellow †



5. Denim Blue metallic



6. Rosso Brunello metallic †



7. Black Magic pearl effect † ††



8. Cappuccino metallic



9. Petrol Blue metallic



10. Brilliant Silver metallic



11. Satin Grey metallic ††



12. Storm Blue metallic † †† ♦♦



13. Steel Grey metallic

	1	2	3	4	5	6	7	8
	Candy White	Corrida Red	Pacific Blue	Sprint Yellow	Denim Blue metallic	Rosso Brunello metallic	Black Magic pearl effect	Cappuccino metallic
Fabia	•	•	•	•	•	•	•	•
Fabia Scout	•	•	•		•	•	•	•

	9	10	11	12	13
	Petrol Blue metallic	Brilliant Silver metallic	Satin Grey metallicmetallic	Storm Blue metallic	Steel Grey metallic
Fabia	•	•	•	•	•
Fabia Scout	•	•	•	•	•

## The ŠKODA Fabia colours

### Monte Carlo



14. Black Magic Pearl Effect



15. Candy White



16. Sprint Yellow



17. Corrida Red



18. Brilliant Silver metallic

	14	15	16	17	18
	Black Magic Pearl Effect	Candy White	Sprint Yellow	Corrida Red	Brilliant Silver metallic
Fabia Monte Carlo	•	•	•	•	•

	19	20	21	22	23	24	25	26
	Candy White	Corrida Red	Sprint Yellow	Race Blue metallic	Rallye Green metallic	Black Magic Pearl Effect	Brilliant Silver metallic	Steel Grey metallic
Fabia vRS	•	•	•	•	•	•	•	•

### vRS



19. Candy White ♦



20. Corrida Red †♦



21. Sprint Yellow ♦



22. Race Blue metallic †♦



23. Rallye Green metallic †♦



24. Black Magic pearl effect †



25. Brilliant Silver metallic ♦



26. Steel Grey metallic

- † White roof available in combination with these colours Hatch only.
- †† Silver roof available in combination with these colours Hatch only.
- ♦ Black roof available in combination with these colours vRS Hatch only.
- ♦♦ Stock vehicles only please consult your retailer.

Because of errors which may occur in the print, the colours illustrated here may differ from the actual finishes themselves. Your ŠKODA retailer will be pleased to advise you.



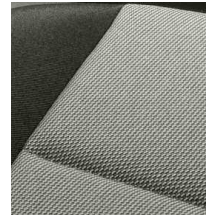
## The ŠKODA Fabia trims & wheels

### Fabia S

Standard



Stone Blue & Onyx dash or Stone Blue & Silver dash



Stone Grey & Onyx dash or Stone Grey & Silver dash



15" 'Satellite' Steel wheel covers

Option



15" 'Antares' alloys

### Fabia GreenLine II

Standard



Domino Grey & Onyx dash or Domino Grey & Silver dash



Domino Black & Onyx dash or Domino Black & Silver dash



15" 'Antares' alloys

### Fabia SE

Standard



Domino Grey & Onyx dash or Domino Grey & Silver dash



Domino Black & Onyx dash or Domino Black & Silver dash



15" 'Antares' alloys

Option



16" 'Noid' alloys



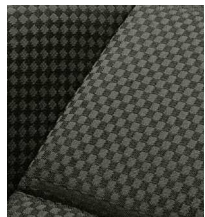
16" 'Elba' alloys



Partial Leather upholstery with Onyx dash or Silver dash

### Fabia Elegance

Standard



Chess Black Onyx dash



Chess Beige Onyx/Ivory dash



16" 'Comet' alloys

Option



Partial Leather upholstery & Onyx dash



16" 'Elba' alloys

## The ŠKODA Fabia trims & wheels

### Fabia Scout

Standard



Scout Onyx cloth & Onyx dash or Silver dash



16" 'Scout' alloys

Option



Partial Leather upholstery & Onyx dash or Silver dash



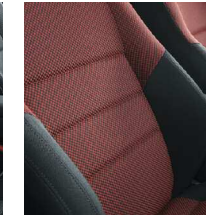
17" 'Scout' alloys

### Fabia Monte Carlo

Standard



Onyx Black



Onyx Red



17" Black Trinity alloys

### Fabia vRS

Standard



Tempo Grey vRS upholstery



Tempo Red vRS upholstery



17" 'Gigaro' alloys



17" Gigaro Dark Chrome alloys



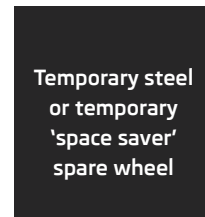
17" Gigaro Black alloys



17" Gigaro White alloys

Option

### Available on all models (except GreenLine II)



See page 16 for details

Pictures are for illustrative purposes only. Please visit your local retailer for further information.



## The ŠKODA Fabia Engine Specifications

Petrol Engines	1.2 12V 60PS	1.2 12V 69PS	1.2 TSI 86PS	1.4 16V 86PS	1.2 TSI 105PS	1.2 TSI 105PS DSG	1.4 TSI 180PS DSG
Trim level	S	S / SE / Elegance / Monte Carlo	SE / Elegance / Scout / Monte Carlo	SE	SE / Elegance / Monte Carlo	S / SE / Elegance	vRS
Type	3-cylinder in-line engine	3-cylinder in-line	4-cylinder in-line engine	4-cylinder in-line engine	4-cylinder in-line engine	4-cylinder in-line engine	4-cylinder in-line engine
Fuel injection system	Multi point fuel injection	Multi point fuel injection	Electronically Controlled Direct Injection	Multi point fuel injection	Electronically Controlled Direct Injection	Electronically Controlled Direct Injection	Electronically Controlled Direct Injection
Cubic capacity cc	1,198	1,198	1,197	1,390	1,197	1,197	1,390
Bore x stroke mm	76.5 x 86.9	76.5 x 86.9	71.0 x 75.6	76.5 x 75.6	71.0 x 75.6	71.0 x 75.6	76.5 x 75.6
Air pollution regulation	EU 5	EU 5	EU 5	EU 5	EU 5	EU 5	EU 5
Compression ratio	10.5:1	10.5:1	10.0:1	10.5:1	10.0:1	10.0:1	10.0:1

### Hatchback

Performance	SE / Elegance						
Max speed mph (km/h)	96 (155)□	101 (163)□	110 (177)□	109 (175)□	119 (191)□	117 (189)□	139 (224)□
Acceleration 0–62mph	16.5	14.9	11.7	12.2	10.1	10.2	7.3
Max. performance (PS/rpm)	60 / 5,200	69 / 5,400	86 / 4,800	86 / 5,000	105 / 5,000	105 / 5,000	180 / 6,200
Max. torque (Nm/rpm)	108 / 3,000	112 / 3,000	160 / 1,500 - 3,500	132 / 3,800	175 / 1,500 - 4,100	175 / 1,500 - 4,100	250 / 2,000 - 4,500
Fuel consumption mpg (l/100km)							
Urban*	38.7 (7.3)	38.7 (7.3)	42.8 (6.6)	35.3 (8.0)	41.5 (6.8)	40.4 (7.0)	36.7 (7.7)
Extra Urban*	62.8 (4.5)	62.8 (4.5)	64.2 (4.4)	60.1 (4.7)	62.8 (4.5)	64.2 (4.4)	54.3 (5.2)
Combined*	51.4 (5.5)	51.4 (5.5)	54.3 (5.2)	47.9 (5.9)	53.3 (5.3)	53.3 (5.3)	45.6 (6.2)
CO <sub>2</sub> emissions g/km*	128	128	121	139	124	124	148

### Estate

Performance	S / SE / Elegance		SE / Elegance / Scout		SE / Elegance		S / SE / Elegance		vRS
Max speed mph (km/h)	n/a	102 (164)□	111 (178)□		n/a	120 (193)□	118 (190)□	140 (226)□	
Acceleration 0–62mph	n/a	15.0	11.8		n/a	10.2	10.3	7.3	
Max. performance (PS/rpm)	n/a	69 / 5,400	86 / 4,800		n/a	105 / 5,000	105 / 5,000	180 / 6,200	
Max. torque (Nm/rpm)	n/a	112 / 3,000	160 / 1,500 - 3,500		n/a	175 / 1,500 - 4,100	175 / 1,500 - 4,100	250 / 2,000 - 4,500	
Fuel consumption mpg (l/100km)									
Urban*	n/a	38.7 (7.3)	42.8 (6.6)		n/a	41.5 (6.8)	40.4 (7.0)	36.7 (7.7)	
Extra Urban*	n/a	62.8 (4.5)	64.2 (4.4)		n/a	62.8 (4.5)	64.2 (4.4)	54.3 (5.2)	
Combined*	n/a	51.4 (5.5)	54.3 (5.2)		n/a	53.3 (5.3)	53.3 (5.3)	45.6 (6.2)	
CO <sub>2</sub> emissions g/km*	n/a	128	121		n/a	124	124	148	

□ Where law permits.

#### Power transmission

**Clutch** The clutch assembly comprises of a single dry clutch disc with membrane spring, asbestos free.

**Manual transmission** Five-speed manual transmission, fully synchronised with direct gearshift.

**Automatic transmission** 7 speed DSG Two coaxial dry multiple disc clutch, electro - hydraulically operated.

#### Chassis

**Front axle/rear axle** McPherson suspension with lower triangular links and torsion stabiliser.

**Suspension** Coil springs, telescopic shock absorbers, rear springs located outside the shock absorber.

**Braking system** Hydraulic dual-diagonal circuit braking system vacuum assisted.

**Front brakes** Ventilated disc brakes in sliding calliper design with piston.

**Rear brakes** Drum brakes with two self-adjusting brake shoes.

**vRS and GreenLine II (Hatch)** Disc brakes front and rear.

**Handbrake** Mechanical handbrake operating on rear wheels.

**Steering** Direct rack and pinion steering with electro hydraulic power.

**Turning circle (m)** 10

## The ŠKODA Fabia Engine Specifications

Diesel Engines	1.2 TDI CR 75PS DPF	1.6 TDI CR 75PS DPF	1.6 TDI CR 90PS DPF	1.6 TDI CR 105PS DPF
Trim level	GreenLine II	S / SE / Elegance / Monte Carlo	S / SE / Elegance / Scout	SE / Elegance / Scout / Monte Carlo
Type	3-cylinder in-line engine	4-cylinder in-line engine	4-cylinder in-line engine	4-cylinder in-line engine
Fuel injection system	Electronically Controlled Direct Injection	Electronically Controlled Direct Injection	Electronically Controlled Direct Injection	Electronically Controlled Direct Injection
Cubic capacity cc	1,199	1,598	1,598	1,598
Bore x stroke mm	79.5 x 80.5	79.5 x 80.5	79.5 x 80.5	79.5 x 80.5
Air pollution regulation	EU 5	EU 5	EU 5	EU 5
Compression ratio	16.5:1	16.5:1	16.5:1	16.5:1

### Hatchback

Performance	SE / Elegance			
Max speed mph (km/h)	107 (172)□	103 (166)□	109 (176)□	117 (188)□
Acceleration 0–62mph	14.2	14.1	12.6	10.9
Max. performance (PS/rpm)	75 / 4,200	75 / 4,000	90 / 4,200	105 / 4,400
Max. torque (Nm/rpm)	180 / 2,000	195 / 1,500 - 2,000	230 / 1,500 - 2,500	250 / 1,500 - 2,500
Fuel consumption mpg (l/100km)				
Urban*	68.9 (4.1)	55.4 (5.1)	55.4 (5.1)	55.4 (5.1)
Extra Urban*	94.2 (3.0)	78.5 (3.6)	78.5 (3.6)	78.5 (3.6)
Combined*	83.1 (3.4)	67.3 (4.2)	67.3 (4.2)	67.3 (4.2)
CO <sub>2</sub> emissions g/km*	89	109	109	109

### Estate

Performance	GreenLine II	S / SE / Elegance / Scout	S / SE / Elegance / Scout	SE / Elegance / Scout
Max speed mph (km/h)	107 (172)□	104 (167)□	110 (177)□	118 (190)□
Acceleration 0–62mph	14.3	14.2	12.7	11.0
Max. performance (PS/rpm)	75 / 4,200	75 / 4,000	90 / 4,200	105 / 4,400
Max. torque (Nm/rpm)	180 / 2,000	195 / 1,500 - 2,000	230 / 1,500 - 2,500	250 / 1,500 - 2,500
Fuel consumption mpg (l/100km)				
Urban*	68.9 (4.1)	55.4 (5.1)	55.4 (5.1)	55.4 (5.1)
Extra Urban*	94.2 (3.0)	78.5 (3.6)	78.5 (3.6)	78.5 (3.6)
Combined*	83.1 (3.4)	67.3 (4.2)	67.3 (4.2)	67.3 (4.2)
CO <sub>2</sub> emissions g/km*	89	109	109	109

□ Where law permits.

#### Tank

**Fuel tank content** 45 litres

**Fuel** Unleaded petrol RON 95 or unleaded petrol RON 91† Diesel.

**Body type** Five-door, five-seat, double-space steel bodywork, fully zinc-coated.

#### Drag co-efficient (Hatch)

Standard	0.32
GreenLine II	0.30
vRS	0.34

#### Drag co-efficient (Estate)

Standard	0.31
GreenLine II	0.30
vRS	0.33

**Official fuel consumption for the Fabia range in mpg (litres/100km):**

**urban** 35.3 (8.0) - 68.9 (4.1);  
**extra urban** 54.3 (5.2) - 94.2 (3.0);  
**combined** 45.6 (6.2) - 83.1 (3.4).

**CO<sub>2</sub> Range** 148 - 89 g/km

†Using low-octane fuel may affect engine performance.

We measure the maximum power output figures of our engines in PS or Pferdestärke (horse strength in German), which is the metric equivalent of bhp. To convert from metric to imperial horsepower, divide the PS figure by 1.0139.

\*Official fuel consumption according to EU Directive 99/94.

The consumption calculation according to 1999/100/EC is based on the actual unladen weight of the vehicle. Additional specifications can lead to a higher weight class and hence to consumption figures of this higher weight class. The driving style, road and traffic conditions, environmental influences and vehicle condition can in practice lead to consumption figures which may differ from those calculated in this standard.

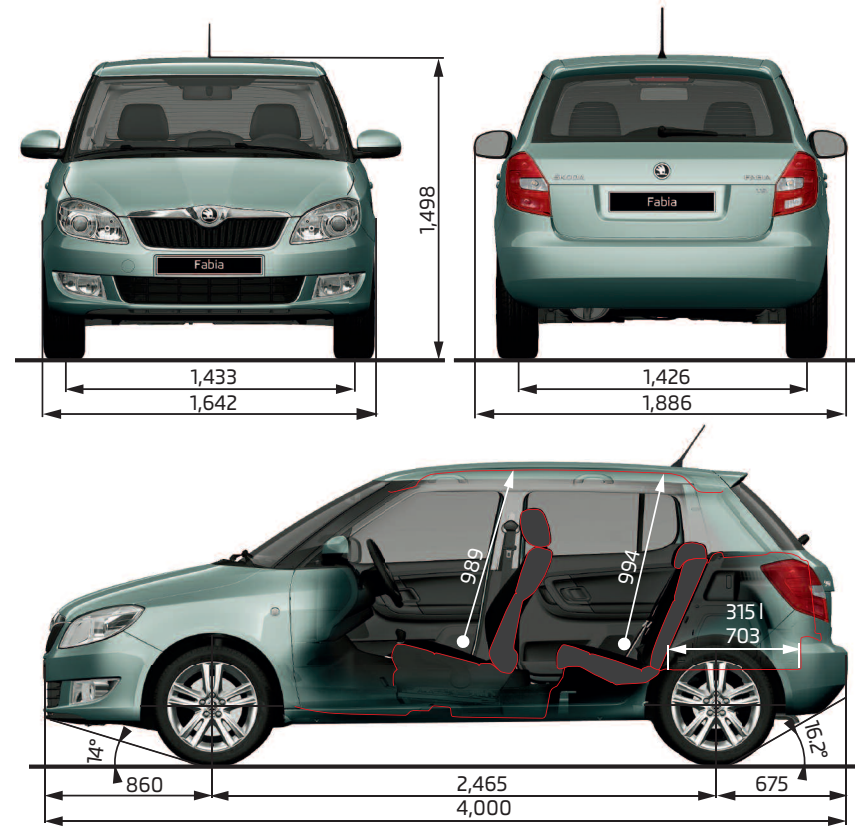


## Measurements and Weights

### The ŠKODA Fabia Hatchback

Exterior dimensions (mm)	Standard	vRS	Monte Carlo
Length (mm)	4,000	4,029	4,013
Width (mm)	1,642	1,642	1,651
Height (mm)	1,498	1,492	1,493
Wheelbase (mm)	2,465	2,464	2,464
Track front (mm)	1,433	1,423	1,423
Track rear (mm)	1,426	1,415	1,415
Clearance (mm)	134	129	129

Interior dimensions (mm)			
Headroom front/rear (mm)		989/994	
Front legroom (mm) (max/min)		1,075/858	
Rear legroom (mm) (max/min)		864/621	
Width of front/rear seats (mm)		1,380/1,384	
Boot capacity (litres)		300	
Boot capacity with rear seats folded (litres)		1,163	
Boot capacity without spare wheel (litres)	315	n/a	315
Boot capacity with rear seats folded and no spare wheel (litres)	1,180	n/a	1,180



Petrol	1.2 12V 60PS	1.2 12V 69PS	1.2 TSI 86PS	1.4 16V 86PS 5spd	1.2 TSI 105PS	1.2 TSI 105PS DSG	1.4 TSI 180PS DSG
<b>Weight</b>							
Kerb weight* kg	1,020	1,020	1,041	1,029	1,055	1,089	1,243
Total weight kg	1,550	1,550	1,571	1,559	1,585	1,619	1,718
Payload** kg	530	530	530	530	530	530	475
Max roof load kg	75	75	75	75	75	75	75
Towing unbraked max kg	500	500	500	500	500	500	n/a
Towing braked max kg	800	800	1,100	1,000	1,200	1,200	n/a
Nose weight max kg	50	50	50	50	50	50	n/a

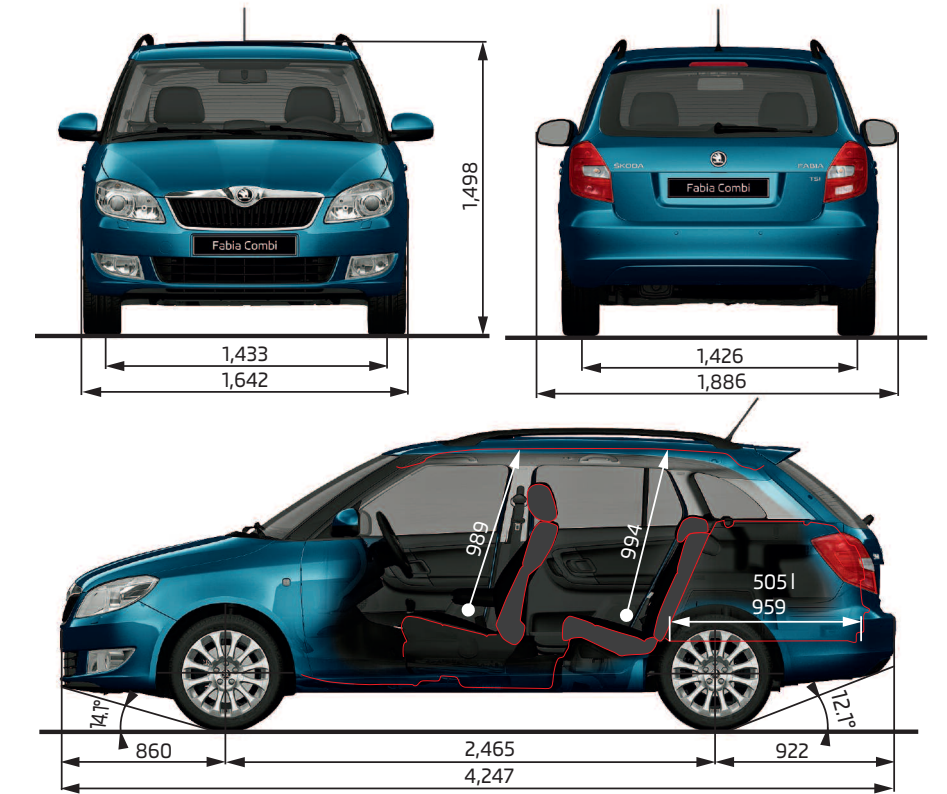
Diesel	1.2 TDI CR 75PS DPF	1.6 TDI CR 75PS DPF	1.6 TDI CR 90PS DPF	1.6 TDI CR 105PS DPF
<b>Weight</b>				
Kerb weight* kg	1,128	1,129	1,129	1,144
Total weight kg	1,658	1,659	1,659	1,674
Payload** kg	530	530	530	530
Max roof load kg	75	75	75	75
Towing unbraked max kg	500	500	500	500
Towing braked max kg	1,000	1,000	1,200	1,200
Nose weight max kg	50	50	50	50

All measurements and weights are correct at time of going to print but may be subject to change and may vary according to passengers and load in vehicle.

### The ŠKODA Fabia Estate

Exterior dimensions (mm)	Standard	Scout	vRS
Length (mm)	4,247	4,247	4,276
Width (mm)	1,642	1,642	1,642
Height (mm)	1,498	1,513	1,494
Wheelbase (mm)	2,465	2,465	2,464
Track front (mm)	1,433	1,433	1,423
Track rear (mm)	1,426	1,426	1,415
Clearance (mm)	135	149	129

Interior dimensions (mm)			
Headroom front/rear (mm)		989/994	
Front legroom (mm) (max/min)		1,075/858	
Rear legroom (mm) (max/min)		864/621	
Width of front/rear seats (mm)		1,380/1,383	
Boot capacity (litres)		480	
Boot capacity with rear seats folded (litres)		1,460	
Boot capacity without spare wheel (litres)	505	505	n/a
Boot capacity with rear seats folded and no spare wheel (litres)	1,485	1,485	n/a



Petrol	1.2 12V 69PS	1.2 TSI 86PS	1.2 TSI 105PS	1.2 TSI 105PS DSG	1.4 TSI 180PS DSG
<b>Weight</b>					
Kerb weight* kg	1,040	1,061	1,075	1,109	1,238
Total weight kg	1,570	1,591	1,605	1,639	1,713
Payload** kg	530	530	530	530	475
Max roof load kg	75	75	75	75	75
Towing unbraked max kg	450	450	450	450	n/a
Towing braked max kg	800	1,100	1,200	1,200	n/a
Nose weight max kg	50	50	50	50	n/a

Diesel	1.2 TDI CR 75PS DPF	1.6 TDI CR 75PS DPF	1.6 TDI CR 90PS DPF	1.6 TDI CR 105PS DPF
<b>Weight</b>				
Kerb weight* kg	1,144	1,149	1,149	1,164
Total weight kg	1,674	1,679	1,679	1,694
Payload** kg	530	530	530	530
Max roof load kg	75	75	75	75
Towing unbraked max kg	450	450	450	450
Towing braked max kg	1,000	1,000	1,200	1,200
Nose weight max kg	50	50	50	50

\* Kerb weight is the mass of the vehicle with body work in running order (kg) \*\* Payload includes driver at 75kg & equipment.





**ŠKODA Customer Promise**  
Where actions speak louder than words



**Care and consideration for you and your car**

- We will...**
- > Work competently and in your best interests
  - > Treat you as a valued individual and respect and care for your property



**A flexible and convenient service**

- We will...**
- > Provide flexibility and choice of dates and times for booking and collection
  - > Ensure our price will be all-inclusive for the work we agree to undertake
  - > Endeavour to diagnose a vehicle defect within 24 hours of the vehicle being presented to us
  - > Offer free collection and delivery within a 10 mile radius (up to 20 minutes drive time) for pre-bookings
  - > Provide a courtesy car or arrange onward mobility if your vehicle is to be kept overnight



**Expertise and attention to detail**

- We will...**
- > Complete the work as agreed with you
  - > Always gain your authority if any additional work is required
  - > Keep you informed of progress and advise you when your car is ready
  - > Complete a complimentary visual health check if your vehicle is left with us and include a professional recommendation of:
    - Any components that require replacing immediately
    - The point at which any part of your car should be re-checked in the near future
  - > Check for any warrantable product enhancements recommended by ŠKODA and perform these free of charge
  - > Always use genuine ŠKODA parts and accessories
  - > Wash your car following a Service



**A clear explanation of our work**

- We will...**
- > Ensure our invoice matches the booking price
  - > Provide a full explanation of work completed and any additional charges made
  - > Communicate clearly in an open and honest way avoiding jargon
  - > Review the vehicle condition report and explain all work completed
  - > Where possible, perform a workaround of the vehicle with you
  - > Value your feedback and will encourage you to complete our Your Opinion Counts survey so you can tell us what you liked and how we can improve further



## Technical glossary

**ABS**: the anti-lock braking system prevents the wheels from locking during heavy or emergency braking, enabling the vehicle to remain steerable. When braking, wheel speed sensors measure the road wheel speed and should one or more wheels start to lock the system reduces brake pressure to that wheel.

**Elements of the ABS System :-**

• **EBC**: Electronic brake control. The engine brake torque control regulates the power supply by intervening with the engine management system.

**CAN Bus**: the CAN Bus is an electronic data bus which links the various different electronic control systems in the car. It ensures ideal co-ordination between systems and reduces the amount of wiring needed in the car.

**Fuel cut-out**: should one or more of the airbags inflate after an accident, this system automatically cuts out the fuel supply, thus preventing subsequent leakage of the diesel or petrol.

**Trip Computer**: the trip computer not only features an impressive range of data displays, operating it is simplicity itself. A multifunction touch key enables you to call up all relevant data on the easy-to-read display. Features include external temperature, time, current fuel consumption, average fuel consumption, miles driven and average speed.

**DPF**: diesel particulate filter is part of the exhaust system responsible for cleaning the engine exhaust gases before they enter the atmosphere. The DPF catches soot particles emitted in the exhaust gas and it works in conjunction with the catalytic converter, which reduces the amount of harmful gases entering the atmosphere. The DPF must periodically be emptied of the soot particles, a process known as regeneration. This involves elevated exhaust system temperatures. A driving style is required during regeneration, where a constant vehicle speed above 37 mph must be maintained. This does not always suit customers who make frequent short journeys or experience stop/start driving or drive within inner-city or urban areas.

**CR**: the completely new range of diesel engines are built on a system of Common-Rail fuel injection. The diesel engines have a high-pressure common rail direct injection fuel system and four-valve technology. As a result, the new engines are much quieter, more refined in their operation and consume less fuel, compared to the Pump Duse engines and significantly reduce emissions.

**ESC**: electronic stability control is designed to stabilise the dynamic handling response of the vehicle by counteracting any tendency towards oversteer or understeer. The ESC constantly compares the actual movement of the vehicle with predetermined values and according to the situation ESC reacts by braking each wheel individually (according to direction of slip) and automatically adjusting the engine’s output.

**Elements of ESC system:-**

• **ASR**: anti-slip regulation traction control ensures the Fabia’s stability when pulling away or accelerating. If the engine power or torque being transmitted to the drive wheels is too great, for example on a slippery road surface, engine torque is automatically reduced until optimum road holding returns, thus preventing wheelspin. A light indicates whether the ASR system is on. It can be manually switched off.

• **EDL**: the electronic differential lock continually compares the rpm of the drive wheels, and if it identifies a difference between them which could lead to an individual wheel spinning, for example if the two wheels are on different types of surface or accelerating on wet leaves, the system brakes the wheel affected until uniform rpm of all drive wheels is restored.

• **HBA**: Hydraulic brake assistant increases the optimal build-up of brake power. It ensures complete use of the brake system potential, thus shortening the braking distance.

• **HHC**: Hill hold control allows for a safe hill start by holding the brake for a small amount of time, reducing the risk of unintentional reversing or roll back.

• **TPM**: Draws the drivers attention to any pressure loss in any of the tyres. Early warning can prevent damage from occurring as a result of an under inflated tyre or a defect that radically changes the cars behaviour and driveability.

## Customer services

**Talk to us on 08457 745 745**

No matter what the query, our dedicated call centre is always ready to listen. No matter how big or small the request, speak to one of our customer care advisors to see if they can help. The call centre is open from 8.30am-5.30pm. If you're calling out of hours, then a message can be left and you'll be contacted back.

**Peace of mind with a ŠKODA warranty**

In the first two years of owning your car, you'll get the peace of mind of a two year unlimited mileage warranty. In addition, you'll also get a further warranty on new vehicles supplied through the appointed dealer network until the vehicle has completed 60,000 miles or the end of the third year, whichever is sooner.

Your Fabia also benefits from a 3 year paint warranty and 12 year body protection warranty.

**A network that’s here to help**

With 17 years in the top 10 of JD Power’s customer satisfaction survey, our network of approximately 125 sales retailers know how to treat a customer. You can be sure that as a ŠKODA customer, your retailer will look after you from the moment you walk through the door, throughout the life of your ŠKODA. Your Fabia will be serviced and maintained to the highest standards by specially trained ŠKODA technicians. And when you need a spare part you'll be happy to know that most are held in stock, or can be ordered within 24 hours. So if top class customer satisfaction is what you’re after, the ŠKODA network will be there for you.

**Motability**

People in receipt of the Higher Mobility Component of the Disability Living Allowance receive special help from ŠKODA. Preferential prices on low cost Contract Hire are available through your local approved Motability retailer. For full details, contact your retailer.

**If your ŠKODA’s in trouble, rely on ŠKODA Assistance**

Completely free of charge, every new ŠKODA is covered by ŠKODA Assistance, provided by the RAC through a dedicated team. This cover lasts for 3 years, with no mileage limit. So if you ever break down, you can use the freephone number to call out someone who really knows about ŠKODA cars to help. This service is even available in Europe, so you don't need additional breakdown cover when you're driving on the continent.

**Financing your ŠKODA**

We all know that times are hard, so ŠKODA Finance specialises in providing funding solutions for ŠKODA drivers. Regardless of whether you’re a private or business user, you can choose from a range of funding options.

**Finance products available are:**

- Solutions – a personal contract plan
- Hire purchase
- Lease purchase
- Finance lease
- Contract hire

With all ŠKODA Finance products you can choose a fixed-cost maintenance plan designed to help you budget accurately. No matter what finance product you choose, your local ŠKODA retailer will be able to provide you with a personalised quote that could meet your budget and vehicle needs. ŠKODA Finance is a trading name of Volkswagen Financial Services (UK) Limited, Brunswick Court, Yeomans Drive, Blakelands, Milton Keynes MK14 5LR. Registered in England number 2835230.

**Congestion charges**

Cars that emit 100g/km or less of CO2 such as the Fabia GreenLine II model, qualifies for a 100% discount for congestion charging. Vehicles need to be registered to qualify, for more information visit www.tfl.gov.uk. There is currently a £10 registration payment required for the application to be completed.

## Extended warranty

**Adding that little extra to your car**
If the standard specification and factory fitted options aren't enough for you, then why not take a look at our range of retailer fitted accessories? A separate accessories brochure can be found at your local retailer, or can be ordered by phoning our call centre, or by going on-line at www.skoda.co.uk

**ŠKODA Insurance**

We want you to start enjoying your new car from day one and thanks to ŠKODA Insurance complimentary seven day cover you can. Call free on 0800 316 7895, provide us with a few details, and we'll send a cover note to your retailer. They will then tax your car and you can drive it away. Telephone lines are open Monday to Friday 8am – 9pm and Saturday 9am – 5pm.

For details of our full range of insurance products visit insurewithskoda.co.uk. You can get an annual car insurance quote for your ŠKODA and buy it online too.

ŠKODA Insurance is a trading name of Volkswagen Insurance Service (Great Britain) Limited, an appointed representative of Volkswagen Financial Services (UK) Limited, registered in England number: 2835230 (registered office: Brunswick Court, Yeomans Drive, Blakelands, Milton Keynes MK14 5LR). ŠKODA Insurance motor insurance is sold, underwritten and administered by Allianz Insurance plc, registered in England number: 84638 (registered office: 57 Ladymead, Guildford, Surrey GU1 1DB). Both organisations are authorised and regulated by the Financial Services Authority (FSA), whose registration numbers are 311988 and 121849 respectively. Authorisation details can be checked on the FSA's register at fsa.gov.uk or call 0845 606 1234. Volkswagen Financial Services (UK) Limited and Allianz Insurance plc are not part of the same corporate group.

**Exclusions and limitations**

Wear and tear components will only be considered under the terms of the warranty for the first of six months or 6,500 miles, whichever is soonest. These include, but are not limited to brake linings and disc pads, clutch release bearings, clutch pressure plates and centre plates, tyres, wiper blades, seat and backrest covers, floor coverings, spark plugs, batteries for key fobs and alarms, light bulbs and shock absorbers.

Mechanical adjustments including but not limited to adjustments to doors, flaps, boot lids, bonnets and sunroof, brake adjustment, clutch adjustment, v belt adjustment, ignition adjustment, headlight adjustment, steering geometry adjustments and wheel balancing are excluded.

**Damage (including but not limited to the following) is excluded:**

- Damage caused by your failure to take all reasonable steps to prevent mechanical damage from occurring.
- Damage or defects caused by not having the vehicle serviced in accordance with the manufacturer’s guidelines.
- Damage or defects caused by improper use of the vehicle, neglect or use of the vehicle for motor sports activities.
- Damage caused by an accident.
- Damage to paintwork or chrome caused by external influences, such as climatic, chemical or industrial pollution.
- Damage resulting from the use of non-original replacement parts.

Routine maintenance and servicing is not covered by the warranty. Incidental or consequential costs such as hotel charges, car hire, loss of personal effects or income are not recoverable under the terms of the warranty.





The information in this brochure referring to specification, design, equipment, material and external appearance relates to the time at which this brochure was printed. Whilst every effort is made to ensure its accuracy, the information in this brochure is not binding and is subject to alteration. Some illustrations in this brochure depict left hand drive models, with both standard and optional equipment shown. Please confirm exact specifications, prices and colour availability with your ŠKODA retailer who will be notified of any specification changes as they occur.

**Edition:** UK 03/13

**Information:** 08457 745 745

**Internet:** [www.skoda.co.uk](http://www.skoda.co.uk)

**E-mail:** [customerservices@skoda.co.uk](mailto:customerservices@skoda.co.uk)

Welcome to your ŠKODA retailer