



IS

IS 300 / IS 300h



IS	» P2
ENGINEERED TO EXCITE	» P23
TAKUMI	» P58
ENVIRONMENT	» P62
COLOURS	» P64
SPECIFICATIONS	» P72
FEATURES	» P73



PURE SPORTS DRIVING PLEASURE

"Just take hold of the steering wheel, depress the accelerator, and drive. From this point, let your body and soul do the understanding."

- Junichi Furuyama, IS Chief Engineer





INSPIRED TO THRILL


*Dare to engage: One look and there's no turning back.
The instant you connect will shape your future.*

*Go straight to the heart: Accelerate and feel your adrenaline surge.
Ride the growing wave of power and excitement.*





*Fire your imagination: Release the prowess of the athlete within.
Agility in close quarters turns into pure exhilaration in the open.*

A silver Lexus IS sedan is shown from a rear three-quarter view, driving on a city street. The car is in motion, with motion blur on the road and buildings. The background features modern architecture, including a building with a blue-tinted glass facade and another with a white facade. The sky is blue with some clouds. The overall scene is bright and urban.

*Spark desire: The closer you get, the stronger the attraction.
The bold presence seduces with the promise of so much more.*



*Take a deep breath: Experience calm in the eye of the storm.
Your interaction with the world flashing by is precise and assured.*



*Feast your eyes: Distinctive lines blend with sculpted curves.
Every angle demands attention, especially when you're standing still.*





*Live the moment: Experience the fusion of input and response.
In that instant driving exhilaration is distilled to its purest form.*



*Acclaim perfection: Exhilaration unites body and soul.
Every part plays its role in forging an assured harmony in motion.*



LEXUS

IS



1	IS CONCEPT	» P24
2	DESIGN	» P30
3	FEATURES	» P34
4	PERFORMANCE	» P42
5	SAFETY	» P48
6	F SPORT	» P52



ENGINEERED TO EXCITE



IS CONCEPT

*Sports sedan. The IS lifts
'sports driving pleasure' to a higher plane.*

To achieve the next generation IS, we reversed the development process by building the car first and experiencing the results, and then developed the individual elements required to realise the driving pleasure and breakthrough performance we were after.

The new Lexus IS model range has been engineered to provide outstanding dynamic capabilities and an exhilarating driving experience. This is complemented with Lexus' outstanding refinement, renowned craftsmanship and advanced features. The new Lexus IS, spotting design cues inspired by the brand's immensely popular LFA supercar, possesses a sleek body which incorporates a dramatic design

characterised by the Lexus signature spindle grille.

Driving performance, widely considered as the most important element of sport sedan ownership, has been enhanced, with the usage of industry-leading technology to deliver an emotive drive. A key component of the exhilarating sports driving performance is a suspension system that is both agile yet stable, inspiring confidence with superb grip and excellent response to steering input.

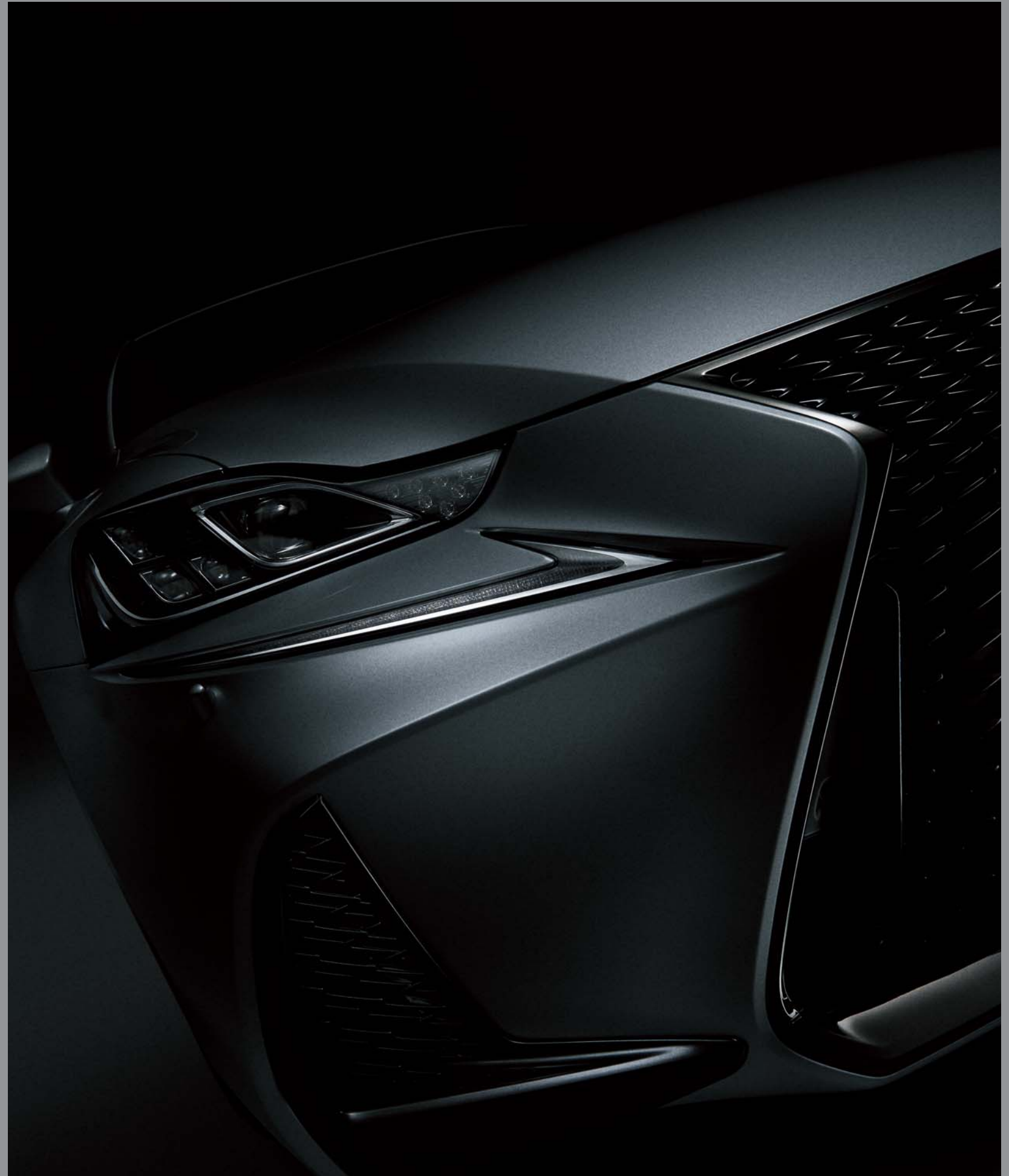
The Lexus IS is the spirit of sporting excellence. Its expressive form fused with refined functions will elevate your driving pleasure to new dimensions.





Connecting the driver and the road in a visceral way should never be left to chance, which is why the IS was tested and tuned on the world's most iconic tracks, including the Fuji Speedway.

Firmly attuned to the road, self-assured and vigorously energised. The Lexus IS aspires to be a premium compact sports sedan that gives a tight impression of a tough and strong athlete, ready to set your adrenaline pumping.



PERFECT MIX OF AGGRESSIVE AND ELEGANCE



DESIGN

Every angle demands attention, whether it is hugging corners or standing still.

The new Lexus IS doesn't just make an entrance. It makes a statement.

It summons the emotions, stimulates the senses and unlocks the power of attraction that defies pure logic. The Lexus IS speaks to you through a design language known as L-finesse, which is defiantly different but passionately Lexus.

The Lexus IS' dynamic style boldly expresses sporting performance. The L-shaped daytime running lights are independently placed below the headlight cluster, making the IS instantly recognisable even from afar. From the distinctive signature spindle grille flows a body design that comes alive

with sweeping curves leading to sculpted lines, signalling in no uncertain terms, that once you step into the driver's seat, you're going to get noticed. The Lexus IS gives the world something to talk about.

In the spacious cabin, the Lexus IS sporting prowess is complemented by the refined interior design, integrated multimedia systems, and luxurious finishes for that pampering feel. The ergonomically designed cockpit includes hints of LFA-inspired features and lowered seats to boost your driving experience.

With breath-taking design that is crafted to perfection, the new Lexus IS leaves rivals trailing behind.



EXTERIOR

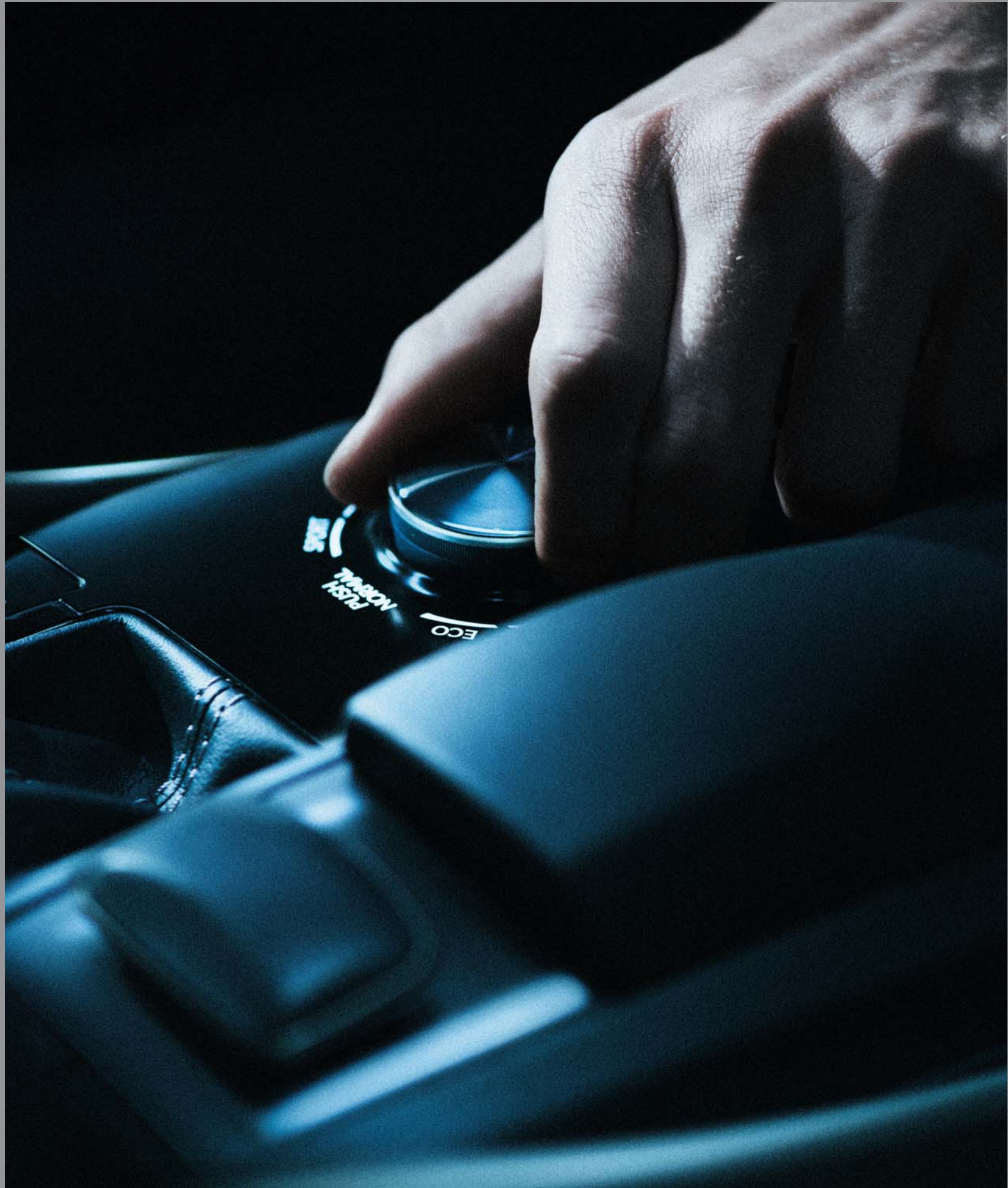
Distinctive lines blend with sculpted curves to emanate an aggressive and bold spirit.



INTERIOR

The amalgamation of style and refinement accentuates the dynamic expression of athletic strength and sporty ambience of the interior.





THE POWER OF INTUITION



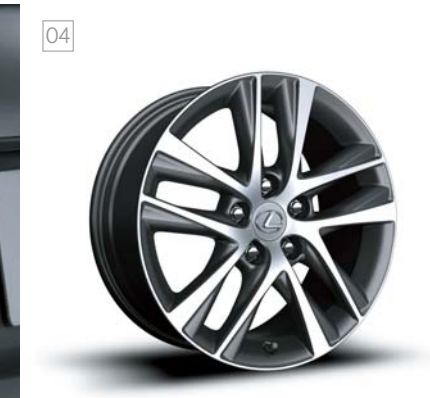
FEATURES

The Lexus IS isn't afraid to challenge conformity with its integrated multimedia systems, luxurious touches and intuitive features.

The Lexus IS is as much functional as it is stunning. Besides its dynamic sculpted lines and alluring presence, the IS boasts a range of innovative features that is aimed at improving the driving experience. In the IS you'll discover a welcoming sense of space, yet at the same time a feeling of snugness and security.

The sharp L-shaped Daytime Running Lamp clearly expresses and accentuates the Lexus

identity while the interior seeks to achieve a fine harmony between material and shape based on function. Instrumentation is positioned near eye level in the upper display zone, thus enhancing operability while creating a modern impression. From climate controls adjusted with the slide of a finger to a Drive Mode Select dial that adjusts the car's responsiveness, innovation surrounds you inside and out, keeping you a step ahead, every step of the way.



01 / L-shaped LED Headlamps

The design of the LED headlamps and independent LED DRL* featuring the distinctive Lexus L-shaped arrowhead styling, contribute to the eye-catching sporty face of the IS. At night, the energy-efficient LED low and high beam lamps produce a high quantity of light for excellent visibility. For Luxury and F SPORT package only.

02 / Bi-LED Headlamps

These Bi-LED headlamps feature a single-lamp projector that can switch between low and high beam, and an auto-levelling system which keeps the irradiation axis constant. While driving during the day, the LED DRL* helps recognition by oncoming vehicles and vehicles driving ahead. For Executive package only.

* DRL: Daytime Running Lamps.

03/ LED rear combination lamps

The dynamic design of the rear combination lamps forms a sharp line from the rear wheels to the rear of the car, and echoes the Lexus L-shaped styling of the headlamps. The energy-efficient LED tail and brake lamps provide bright and clear signalling.

04 / 17-inch aluminium wheel

The elegant five twisted twin-spoke design produces a feeling of depth that changes expressions when viewed from different angles. It promises an inspiring and dynamic drive every time you approach your car.



01 / Trunk capacity
Balancing exhilarating performance with thoughtful functionality is the hallmark of Lexus. A good example is the intelligent layout of the rear suspension, which contributes to the ample capacity of the trunk, with room for three full-size (9.5 inch) golf bags.



02 / Fold-down rear seatbacks
60/40 split, fold-down rear seatbacks combine with the ample trunk space to provide versatile and flexible luggage carrying capacity. The fold-down mechanism makes it easy to fold down one or both sides of the 60/40 split rear seatbacks, to enable the carrying of items approximately 150cm in length.



03 / Rear seat space
The extended vehicle dimensions including the wheelbase create the foundation for the outstanding comfort of the spacious cabin. It is especially noticeable in the rear seats where the thin front seatbacks and good space around the knees contribute to excellent legroom and access, providing even more reason to share the IS' sports driving pleasure with family and friends.



04 / Power front seats
The front seats have 8-way power adjustments to let individuals with a wide range of physiques tailor the optimum position of comfort and support required for focused sports driving. The adjustments include slide, tilt, lifter and recline. The driver's seat also features lumbar support adjustment.



05 / Knee pads
Complementing the low-set position of the front seats, knee pads on both sides of the centre console were carefully shaped and positioned to provide support during sports driving. For the driver, it contributes to a stable and comfortable posture during hard driving, and a soft finishing touch to the snug feeling of the cockpit.



06 / Heated and ventilated seats
Heated and ventilated seats for the front seats have separate heaters and cooler in the seat cushions that provide comfort regardless of the weather.



07 / Leather steering wheel
Providing a comfortable grip for sports control, the stylish design features a large circular pad in the centre that contrasts with the thin metallic base plate. The prominent Lexus L emblem and quality leather finish add a luxury touch to the IS sports driving experience.



01 / Electro Multi-vision (EMV) display
 The IS is equipped with a high-resolution 10.3-inch EMV display in the centre of the instrument panel. For convenience, the audio system, incoming mobile calls and navigation on the EMV display can be controlled using switches on the steering wheel.

03/ Remote Touch Interface (RTI)
 The RTI lets users interact intuitively with the central EMV display. Ergonomically designed, it is situated close at hand and is as easy to use as a computer mouse.

02 / Optitron meters
 The easy-to-read, self-illuminating 2-eye Optitron meters provide vital driving information at a glance. The illumination of the multi-information display in the centre of the meters changes colour to highlight the drive mode selected. In Eco and Normal Modes, it turns to a tranquil blue. Switching to Sport/Sport S or Mode changes the illumination to a vibrant red.

04 / Electrostatic temperature control switches
 Highlighting the IS' leading-edge credentials, the innovative electrostatic temperature controls located in the centre console enable quick and intuitive operation of the air conditioner with the touch of a finger. To optimize individual comfort, temperature settings for the driver and front passenger seats can be set separately.



05/ Accent stitching
 The selection of special material for the meter hood and knee pads, highlight Lexus craftsmanship and attention to detail. The finish with its single line of accent stitching emphasizes the performance focus of the IS, adding a refined note to its singular sports driving experience.

06 / 2 USB ports/ mini-jack
 The audio system is equipped with two USB ports, one that enables the playing of music on connected USB devices in a number of data formats, including MP3 and WMA (Windows Media Audio), and one that can be used for charging smartphones and other devices.

07 / Analogue clock
 An understated focal point in the centre of the instrument panel, this elegant analogue clock expresses the Lexus qualities of simplicity, functionality and precision. The self-illuminating dial plate with contemporary 3-dimensional scales is stylish and refined, ensuring excellent legibility both during the day and at night.

INSPIRED TO THRILL



PERFORMANCE

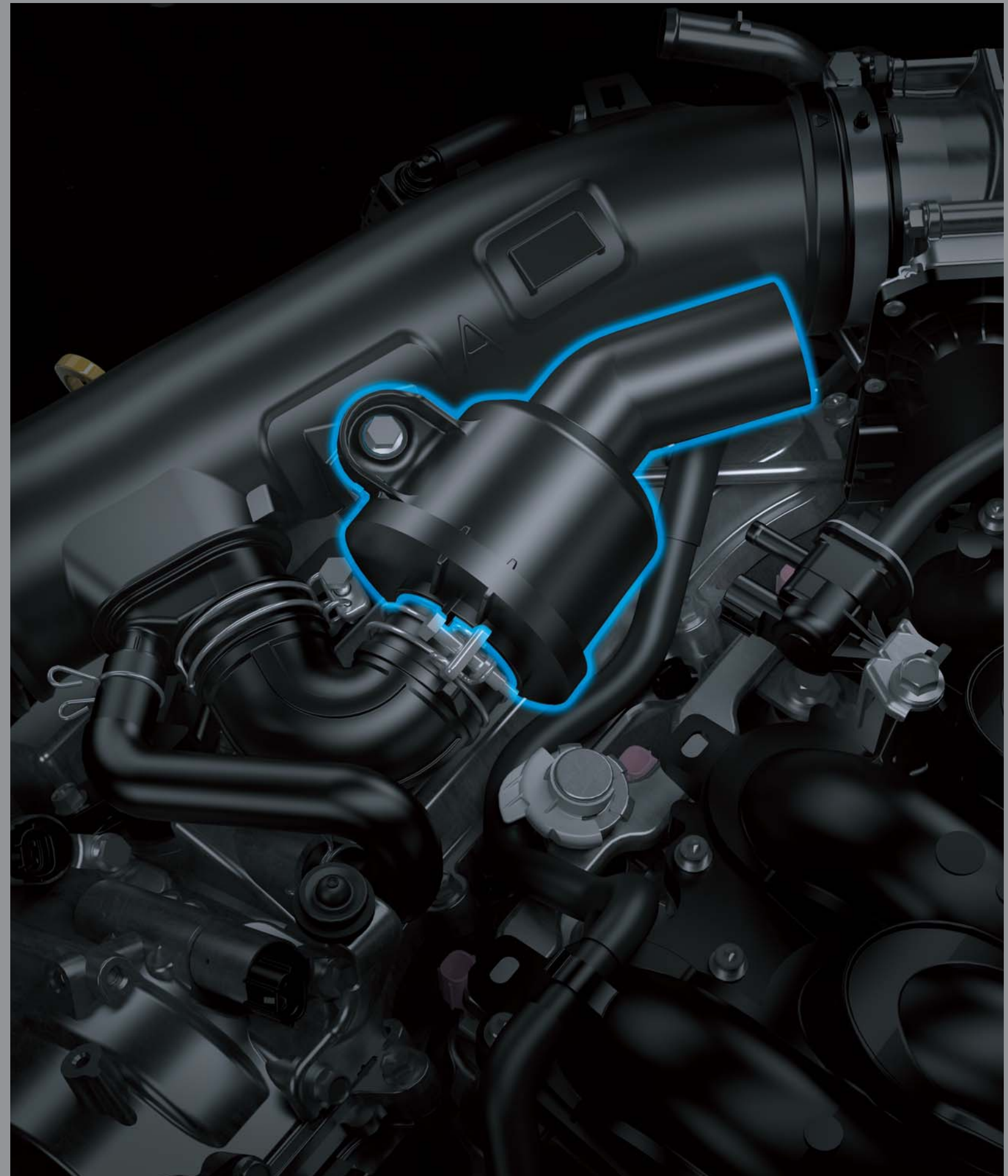
Feel the energy, feel alive.

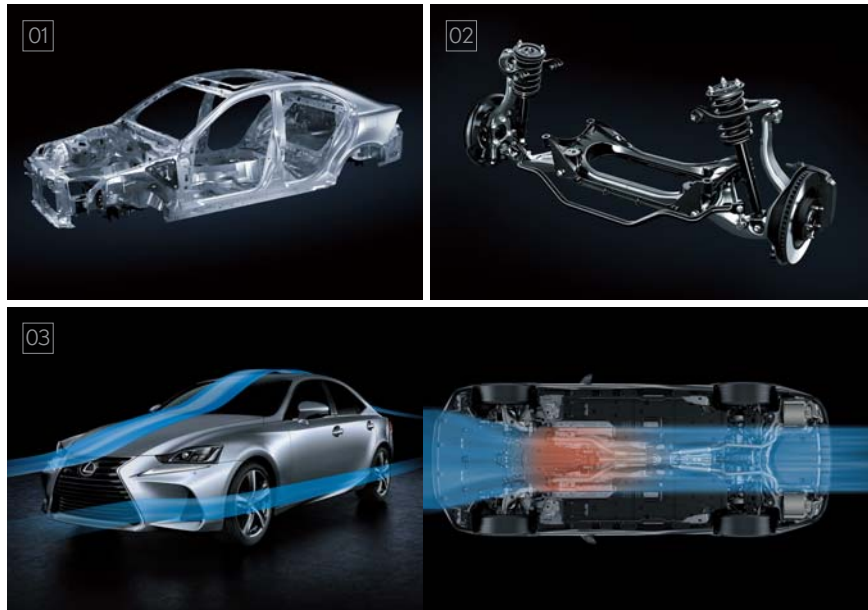
Lowered, refined and tuned for performance driving, the Lexus IS delivers. The unseen foundation of the IS' direct and engaging sports handling, stability and ride comfort is a high rigidity body structure. To achieve the balance of light weight with excellent rigidity, it required the adoption of innovative production techniques. This provides an excellent foundation for the agile responsive handling and smooth ride that shape the IS' sports driving pleasure.

The exhilarating sports driving performance is highly attributed to the unparalleled suspension system. The double wishbone front suspension, a configuration used in most race cars, has been engineered for flatter cornering while the multi-link

rear suspension was fine-tuned to realize excellent grip performance and steering response. At the heart of sports driving and the interaction between the driver and the IS is the quick selection and changing of gears. With its astonishing linear acceleration, the 8-Speed SDPS (Sport Direct Shift) blends sharp response times with the outstanding smoothness and efficiency of eight gears. This system includes G AI-SHIFT to choose the optimum gear for precise control.

Ultimately, the dynamism of the Lexus IS boils down to the engine. The highly evolved turbocharged engine racks up an efficient and highly responsive 241 bhp that takes you from 0-100km/h in 7 seconds.





01 / Chassis

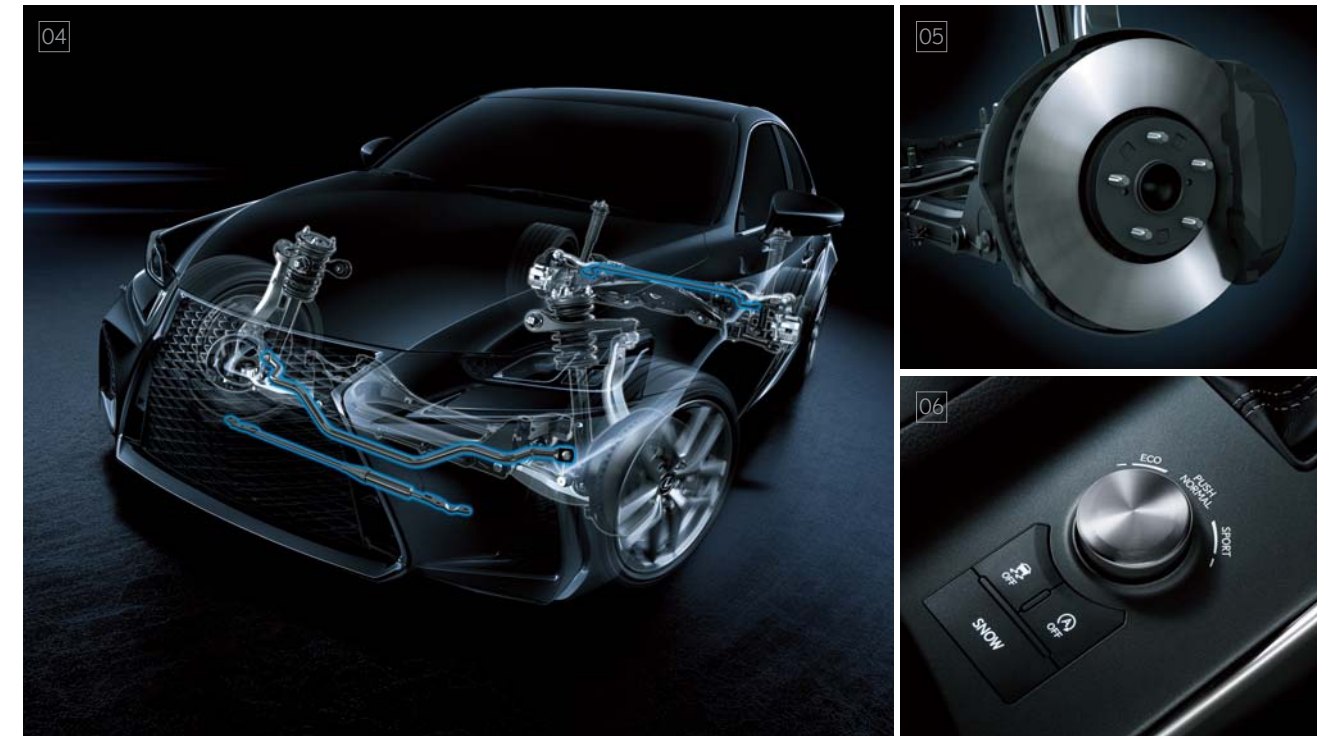
The foundation of the IS' direct and engaging sports handling, stability and ride comfort is a high rigidity body structure. The use of innovative production techniques, including laser screw welding and body adhesives result in a lightweight chassis with vibration damping characteristics.

03 / Aerodynamics

Careful attention devoted to aerodynamics contributes to the fuel-efficient performance and quiet comfort of the cabin, even in high-speed driving. Aero stabilizing fins on the front doorframe covers and rear combination lamps contribute to handling stability and road tracking performance, while the aero stabilizing fins on the underbody covers help smooth airflow from front to rear under the car, further reducing drag.

02 / Front and rear suspension

Individual components in the double wishbone front suspension and multi-link rear suspension were optimised to deliver the sports-focused characteristics of a sports sedan, with agile driving and refined ride comfort.



04 / Performance damper

A performance damper has been installed between the left and right underfloor braces to ensure excellent handling stability.

05 / Disc brake

High performance ventilated disc brakes on all four wheels provide the quick, smooth and linear braking expected of a Lexus sports sedan. High friction brake pads further contribute to the excellent stopping power and braking feel. The use of lightweight aluminium for brake components helps to reduce weight, contributing to fuel efficiency.

06 / Drive mode select

It integrates control of multiple systems so you can tune the performance of the IS to suit your driving style. Selecting Eco Mode changes the engine output, throttle control and air conditioning characteristics required for fuel-efficient eco-driving. Sport/Sport S Mode refines the powertrain settings and amount of EPS (Electric Power Steering) assist for excellent acceleration and sports steering feel. In addition, Sport S+ Mode* refines the powertrain and chassis settings for dynamic sports driving.

*F SPORT MODEL ONLY



01 / 2.0L Direct injection turbocharged engine
This engine combines a compact high efficiency twin scroll turbocharger with an Atkinson Cycle engine with Dual VVT-iW to deliver an exhilarating driving performance and excellent fuel efficiency. To realize optimum combustion, the innovative D-4ST features both direct and port injectors. This helps generate high torque from low through to high rpm ranges, high level responsiveness, as well as enhancing fuel economy.*¹



02 / 8-Speed SDPS (Sport Direct Shift)
The dynamic linear acceleration of the lightweight and compact 8-Speed SDPS delivers smooth shift feeling and superb drivability. In Sport/Sport S or Sport S+ Mode, G AI (Artificial Intelligence) - SHIFT selects the optimum gear and downshift pattern in response to input from a G force sensor. In M position, it enables gear holding, as well as full lock-up shifting from 2nd through 8th gears.

03 / Dual exhaust pipes
Besides a sporty appearance to hint at the power of the turbo engine, the dual exhaust pipes help to ensure quietness at low engine speed while creating an emotional sound during acceleration.

*¹ VVT-iW: Variable Timing-intelligent wide D-4ST: Direct-injection 4 Stroke Superior-version with Turbo.



01 / Hybrid system
For dynamic driving and exceptional environmental performance, Lexus Hybrid Drive intelligently combines the power of a highly-efficient 2.5-litre gasoline engine with electric power from a high-output motor.

03 / Dual exhaust pipes
A refined touch is the unique shape of the dual exhaust pipes that hint at the efficiency of the hybrid engine.

02 / 2.5-litre 4-cylinder engine
The compact and lightweight Atkinson Cycle engine with VVT-i delivers high performance together with excellent fuel efficiency, quiet operation and significantly reduced emissions.*¹

04 / Advance compact battery
The two-tier N-MH hybrid battery is installed in the luggage compartment behind the rear seats. Its compact structure helps ensure there is ample trunk capacity.

*¹ VVT-i: Variable Valve Timing-intelligent.



YOUR PEACE OF MIND



SAFETY

It has eyes in places you don't.

Lexus believes prevention is the best form of protection, so its engineers have developed some of today's most advanced safety measures. Revolutionary technologies and manufacturing techniques make the IS stronger and more protective than ever. They include Vehicle Dynamics Integrated Management (VDIM), an advanced vehicle dynamics management technology which provides integrated control of the Anti-lock Brake System (ABS), Traction Control System (TRC), Vehicle Stability Control (VSC) and Electric Power Steering (EPS) to

help stabilize vehicle behaviour in various driving conditions.

In the event of an accident, occupant protection is integrated into the core of the IS, with a high rigidity body structure. Front, side and rear collision compatible structures are designed to help disperse crash energy, and a high-strength body frame to help suppress deformation of the cabin. Inside the cabin, ten Supplemental Restraint System (SRS) airbags help reduce the impact to occupants in a collision.

SAFETY



01/SRS airbags

The IS features ten sensor-controlled SRS airbags together with pretensioners and force limiters of the front seatbelts. The front occupants are protected by dual-stage SRS driver airbag, dual-stage SRS front passenger airbag, SRS knee airbags and SRS side airbags. SRS curtain shield airbags cover the front and rear door windows. SRS rear side airbags provide extra protection for rear passengers.*1



02 / PUH (Pop Up Hood)

The innovative PUH provides pedestrian protection in the event of a front collision and at the same time enables a sporty design with a low hood line. When the sensors mounted in the front bumper determine that the vehicle has collided with a pedestrian, the hood instantly pops up to create a space to absorb the impact force.

*1 The SRS (Supplemental Restraint System) airbags are supplemental devices to be used with the seatbelts. The driver and all passengers in the vehicle must wear their seatbelts properly at all times. Never install a rear-facing CRS (Child Restraint System) on the front passenger's seat. For a forward-facing CRS, it is recommended you use it in the rear seats. Please do not use accessories for the seats which cover the parts where the SRS side airbags should inflate. Such accessories may prevent the SRS side airbags from activating correctly, causing serious injury (Lexus genuine seat covers are specifically designed for models equipped with the SRS side airbags). The photo shows all the SRS airbags activated for display purposes only (the SRS side and curtain shield airbags only inflate on the side of the collision in an actual accident). For details on these and other important safety features, be sure to read the Owner's Manual carefully.



SPORTING EXHILARATION



IS F SPORT

The essence of sports driving. The IS F SPORT's aggressive character and sports-honed performance evolved directly from the DNA of the LFA supercar.

Combining elements of a race car design and precision performance, the F SPORT is packaged to inject razor-sharp sports performance into the IS' driving experience. Evolved from the first IS F and groundbreaking LFA supercar, Lexus F DNA drives the development of all F SPORT models.

Together with its distinctive 18-inch F SPORT aluminium wheels, the iconic F SPORT grille and sculpted front fascia demand attention

from all angles.

In the cabin, you'll find eye-catching LFA-inspired gauges and bolstered sport seats that are designed to help keep you firmly planted in high-G turns. F SPORT exhilaration is also amplified with the fitting of the Adaptive Variable Suspension (AVS) system, bringing the vehicle's responsiveness and stability in line with a race car driver's expectations.







A/ Exclusive front bumper & grille:
The bold aggressive face of the F SPORT package with dramatic 'spindle grille' exudes high performance.

B/ Aluminium wheels:
The exclusive F SPORT wheels feature a taut Y-shape spoke design, powerfully expressing its performance characteristics.

C/ F SPORT emblem:
The F SPORT emblems on the front fenders confirm the sports driving heritage of the F SPORT and highlight its motorsport-inspired DNA.



D/ Instrument panel:
Expressing a dynamic sporty performance evolved from the Lexus LFA supercar.

E/ Steering wheel:
Perforated steering wheel, featuring the F SPORT emblem at its base.

F/ Aluminium pedals:
The drilled metal pedals with rubber insets to prevent slipping, give a bold dynamic to the feeling of sporting control.

G/ Shift lever knob:
Dimpled leather wrapping helps to further accentuate sportiness.

H/ Trim (Metal film Wedge metal):
The thinly machined wedge metal is finished with a fine 3D-patterned surface.

I/ Scuff plates:
The black Lexus logo inscribed in the scuff plates project an aggressive image of sports performance.

IS F SPORT



01/ F SPORT exclusive suspension

The F SPORT suspension was designed to deliver damping characteristics that suit sports driving sensibilities. To achieve this, both the double wishbone front suspension and multi-link rear suspension were exclusively tuned. In addition, the Adaptive Variable Suspension (AVS) intelligently controls the damping force of the shock absorbers on all four wheels in response to driver input and road surface conditions.

02/ F SPORT front seats

The low-set front sports seats were made using an innovative 'integrated foaming' process that firmly attaches the internal foam to the seat upholstery, eliminating wrinkles and movement of the upholstery. They provide firm support and excellent holding performance under the lateral G forces of sports driving, as well as refined comfort.

03/ F SPORT meters

The innovative meter is a direct evolution of the groundbreaking design and functionality of the meter in the Lexus LFA. The single dial takes centre stage with a combination of Lexus sophistication and cutting-edge precision. In addition to showing information in a clear and logical manner, the meter ring display changes to reflect the drive mode selected.

04/ F SPORT multi-information display

The multi-information display heightens your driving experience by displaying a turbo boost meter with oil temperature and pressure gauges.



LEXUS
TAKUMI

The Lexus pursuit of perfection finds its finest expression in the master craftsmanship of the Takumi.



Every Lexus is based on an uncompromising approach to creating premium automobiles. Inspired by our 'Yet' philosophy, we seek innovation in every facet of engineering through a sophisticated fusion of seemingly incompatible ideas such as 'high performance yet high fuel efficiency. In addition, unique Lexus styling is born off our L-finesse design language, a fine balance of 'leading-edge' and 'finesse', which ensures every Lexus is not only captivating and luxurious, but also highly refined. Finally, every new Lexus model is also measured against a set of internal standards covering design, performance, specifications and equipment, to

ensure it is distinctive and worthy of the Lexus emblem.

This pursuit of perfection is evident at every stage of the manufacturing process. Every Lexus vehicle is created with a masterful skill and attention to detail inspired by both traditional artisanship and state-of-the-art engineering. For example, at the Tahara plant in Japan, precision components made using leading-edge digital technology are assembled and finished by master craftsmen called Takumi, whose technical expertise and sure senses are honed by decades of rigorous experience.

**THE MASTER CRAFTSMEN
WHO MAKE A LEXUS A LEXUS**

There is no higher honour within the engineering ranks of Lexus than a Takumi, or Master Craftsman. Each is hand-selected for performing their craft more skillfully and artfully than the rest. Tasked with training and instilling pride in the thousands of engineers beneath them, this elite group of ten oversees every aspect of development at the Tahara plant. They think in terms of microns. Their margin for error, even less. Though Hirofumi Koga has a specially calibrated machine designed to identify imperfections in the dash, he prefers to use a far more reliable tool: By running his gloved hand over the surface, he can detect less than a millimetre of difference in the uniformity of the foam underneath. And he requires his team members be able to do the same.



**HIROFUMI
KOGA**

*Master of Plastic Moulding,
36 years of experience*



**MASANORI
SUZUKI**

*Master of Vehicle Bodies,
31 years of experience*



**EIJI
GOTO**

*Master of Engine Parts,
37 years of experience*



**YASUNORI
MIYAMOTO**

*Master of Plastic Painting,
29 years of experience*



**KATSUHIRO
YAMAZAKI**

*Master of Vehicle Assembly,
31 years of experience*



**MITSUKI
YOSHIMURA**

*Master of Engine Casting,
35 years of experience*



**ATSUNOBU
WATANABE**

*Master of Engine Assembly,
27 years of experience*



**HIDEYA
SEGAWA**

*Master of Vehicle Inspections,
35 years of experience*



**YOSHIO
MATSUI**

*Master of Body Stamping,
32 years of experience*

Eiji Goto has similarly impossible standards when it comes to scrutinising engine parts. His team members must memorise a list of 250 points to inspect. Sound daunting? That's only for one piece. These are just two of the 26,000 tasks you'll find in a Lexus plant. Each must be precisely demonstrated and described in exacting detail by a craftsman to receive certification. How much detail? Consider this: There's a 14-minute film on how to place a grommet correctly—a task that takes a mere two seconds.



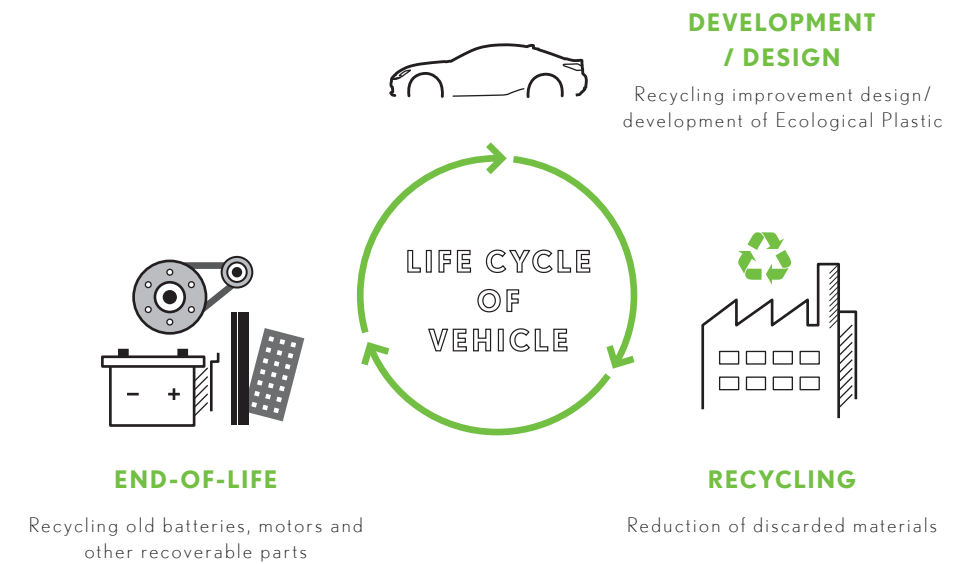
**KIMIHIRO
SAKAKIBARA**

*Master of Paint,
32 years of experience*



LEXUS
ENVIRONMENT

*Safe for you,
safe for the environment.*



At Lexus, sustainability is an enormous challenge that we gladly accept. We are committed to finding better, more efficient ways to contribute to a healthier planet, leading the industry in better business practices. Our focus on the environment drove our development and global leadership of hybrid luxury vehicles, and the knowledge we have gained is applied in all of our vehicles. Our commitment to recovering, recycling and re-using permeates the entire company. To reduce waste to a minimum, we carefully recycle various materials in our offices, factories, and sales facilities, reducing CO₂ levels beyond our achievements on the road.

Specific initiatives to enhance the environment include integrating a keen environment-friendly focus on the entire life cycle of each vehicle, from design and production, through to the recycling of vehicles at the end-of-life. To reduce CO₂ emissions, at the design stage we specify extensive use of plant-derived plastics for components, instead of petroleum-derived plastics. During production, we make repeated use of reusable items, work hard to efficiently use resources to minimize waste, and recycle any waste produced.

LEXUS IS

EXTERIOR & INTERIOR COLOURS

A palette of colours, from bold and luminous to nuanced and sophisticated, lets you express your individuality.



Red Mica Crystal Shine <3R1>



Madder Red <3T2>



Sonic Quartz <085>^



Mercury Grey Mica <1H9>



White Nova Glass Flake <083>*



Heat Blue Contrast Layering <8X1>*

*F SPORT Exclusive.
^Not available for F SPORT.



Platinum Silver Metallic <1J4>



Sonic Titanium <1J7>



Deep Blue Mica <8X5>^



Black <212>



Graphite Black Glass Flake <223>



17-inch Aluminium Wheels (Executive and Luxury Package)

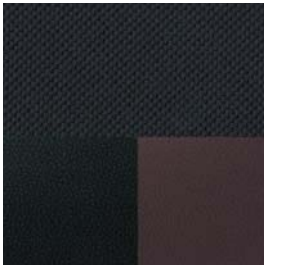


18-inch Aluminium Wheels (F SPORT Package)

LEXUS IS EXECUTIVE PACKAGE <SMOOTH LEATHER>



Chateau



Nuance Black



Noble Brown

<TRIM>



Black Metallic Paint



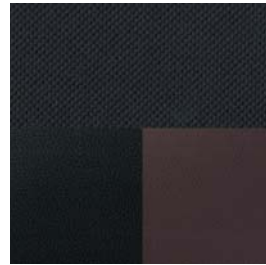
Black

<COLOUR COMBINATIONS>

		CHATEAU (BLACK METALLIC)	BLACK (BLACK METALLIC)	NOBLE BROWN (BLACK METALLIC)	NUANCE BLACK (BLACK METALLIC)
		11	21	41	91
085	SONIC QUARTZ	•	•	•	•
1H9	MERCURY GREY MICA	•	•	•	•
1J4	PLATINUM SILVER METALLIC	•	•	•	•
1J7	SONIC TITANIUM	•	•	•	•
212	BLACK	•	•	•	•
223	GRAPHITE BLACK GLASS FLAKE	•	•	•	•
3R1	RED MICA CRYSTAL SHINE	•	•	•	•
3T2	MADDER RED	•	•	•	•
8X5	DEEP BLUE MICA	•	•	•	•

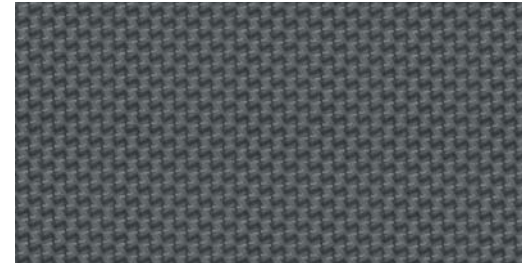
The images above are for colour reference only.

IS 300 F SPORT PACKAGE <SMOOTH LEATHER>



Nuance Black

<TRIM>



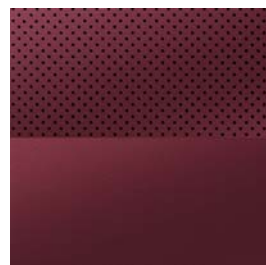
Wedge Metal

<COLOUR COMBINATIONS>



Black

		BLACK (WEDGE METAL)	DARK ROSE (WEDGE METAL)	NUANCE BLACK (WEDGE METAL)
		25	35	95
083	WHITE NOVA GLASS FLAKE	•	•	•
1H9	MERCURY GREY MICA	•	•	•
1J4	PLATINUM SILVER METALLIC	•	•	•
1J7	SONIC TITANIUM	•	•	•
212	BLACK	•	•	•
223	GRAPHITE BLACK GLASS FLAKE	•	•	•
3R1	RED MICA CRYSTAL SHINE	•	•	•
3T2	MADDER RED	•	•	•
8X1	HEAT BLUE CONTRAST LAYERING	•	•	•



Dark Rose

The images above are for colour reference only.

SPECIFICATIONS

ENGINE	IS 300h	IS 300	
	EXECUTIVE	EXECUTIVE	F SPORT
Engine Type	In-line 4, 16-Valve DOHC with VVT-i	In-line 4, 16-valve DOHC, Dual Cycle (Otto + Atkinson), Twin-scroll Turbocharger and Intercooler with Dual VVT-iW & D-4ST	
Drive	Rear-Wheel Drive	Rear-Wheel Drive	
Transmission Type	CVT	8-Speed Automatic Transmission	
Bore x Stroke	90.0 x 98.0 mm	86.0 x 86.0 mm	
Displacement	2494 cc	1998 cc	
Compression Ratio	13.0	10.0	
Max. Output (Combined)	164 kW (219 bhp) / 6000 rpm	180 kW (241 bhp) / 5800 rpm	
Max. Torque	221 Nm / 4200 - 5400 rpm	350 Nm / 1650 - 4400 rpm	
Max. Speed	200 km/h	230 km/h	
Acceleration (0 - 100 km/h)	8.5 sec	7.0 sec	
Fuel Consumption	5.0 L / 100km [20.0 km/L]	7.5 L / 100km [13.3 km/L]	
Carbon Emissions	117 g/km	175 g/km	
VES Banding	A2	C2	

IS HYBRID MOTOR AND BATTERY

Motor Type	Permanent Magnet Synchronous Motor
Max. Output	105 kW
Max Torque	300 Nm
Battery Type	NiMH
Number of Battery Cells	192

CHASSIS

Brake (Front & Rear)	Ventilated Disk Brake	
Suspension (Front)	Double Wishbone	Double Wishbone (AVS)
Suspension (Rear)	Multi-link	Multi-link (AVS)
Steering System	Rack & Pinion Electronic Power Steering	

MEASUREMENTS

Length	4680 mm	
Width (with mirrors)	2027 mm	
Width (without mirrors)	1810 mm	
Height	1430 mm	
Wheelbase	2800 mm	
Thread (Front)	1535 mm	
Thread (Rear)	1550 mm	1540 mm
Min. Turning Radius (Tyre)	5.2 m	
Kerb Weight	1635 - 1720 kg	1620 - 1680 kg
Gross Vehicle Weight	2145 kg	2125 kg
Boot Capacity	450 L	480 L
Fuel Tank Capacity	66 L	



FEATURES

	IS 300 EXECUTIVE	IS 300 F SPORT	IS 300h EXECUTIVE
ULTIMATE COMFORT			
Electrically Adjustable Steering Wheel	•	•	•
Electronically Foldable Wing Mirrors	•	AUTO	•
Electrochromic (EC) Inside Rear View Mirror	•	•	-
Seat Air Ventilation (Driver and Front Passenger)	•	•	•
Driver Seat Lumbar Support	•	•	•
Original Factory Fitted Smooth Leather Upholstery	•	•	•
8-Way Power Adjustable Front Seats	•	•	•
Memory Seat (Driver)	-	•	-
Door Trim, Instrument Panel & Console Box	BLACK METALLIC	WEDGE METAL	BLACK METALLIC
Dual-Zone Independent Climate Control	•	•	•
Rear Centre Armrest with Cup Holder	•	•	•
Paddle Shifters	•	•	•
INTUITIVE TECHNOLOGY			
Smart Keyless Go	•	•	•
Daytime Running Lamps (LED)	•	•	•
Bi-LED Headlamps	•	-	•
Bi-LED Triple 'L' Headlamps	-	•	-
LED Tail Lamps	•	•	•
Auto-Leveling	•	•	•
Headlamp Cleaner	•	•	•
Cruise Control	•	•	•
Electric Power Steering (EPS)	•	•	•
4.2" Colour TFT Multi-Information Display	•	-	•
Drive Mode Select (Eco/Normal/Sport)	3	5 (SPORT S+ / Customize)	4 (EV)
AVS (Adaptive Variable Suspension)	-	•	-
F SPORT Meters	-	•	-
F SPORT Multi-information Display	-	•	-
Lexus Integrated Navigation System with 10.3" Display Screen	•	•	•
Start / Stop Technology	•	•	-
AUDIO & ENTERTAINMENT			
USB/iPod Playback Function/AUX	•	•	•
AM/FM Tuner, DVD Player	•	•	•
Phone Bluetooth	•	•	•
Lexus Premium Audio System with 10 Speakers	•	•	•
360° PROTECTION			
10 SRS Airbags	•	•	•
Hill Start Assist Control	•	•	•
Vehicle Stability Control (VSC)	•	•	•
Anti-Lock Brake System (ABS)	•	•	•
Traction Control	•	•	•
Lexus Parking Assist System with Rear View Camera	•	•	•
Lexus Parking Assist System with Sensors	•	•	•
Child Restraint System	•	•	•
Blind Spot Monitor (BSM) + Rear Cross Traffic Alert (RCTA)	-	•	-
RIMS & TYRES			
225 / 45R17 Aluminium Wheels	•	-	-
225 / 40R18 + 255/35R18 F SPORT Wheels	-	•	-
225 / 45R17 Aluminium Wheels with Run-Flat Tyres	-	-	•
Spare Tyre	•	•	-

Note: Vehicles illustrated, Note: Vehicles illustrated, specifications and equipment detailed in this specification sheet may vary. Lexus reserves the right to alter any details of specifications and equipment without notice. Please consult your Lexus sales consultant for details.



BORNEO MOTORS (SINGAPORE) PTE LTD | 33 LENG KEE ROAD SINGAPORE 159102 TEL: 66-31-1388

LEXUS BOUTIQUE | MON-FRI: 9AM TO 6PM SAT: 9AM TO 7PM SUNDAY & PUBLIC HOLIDAYS: 10AM TO 6PM

LEXUS SERVICE CENTRE | MON-FRI: 8AM TO 5PM SAT: 8AM TO 12PM CLOSED ON SUNDAY & PUBLIC HOLIDAYS

WWW.LEXUS.COM.SG