

2005 LEXUS LS



Vehicle shown with optional equipment.



2005 LEXUS LS



When perfection is the goal, we do more than pay attention to the details. We live by them. Take a closer look at the LS, and all you see is luxury. Even more impressive, however, is that the same is true when you scrutinize the details. We took exquisite care with every element, be it design, technology or engineering, to create a vehicle that is exceptional on every level. The front grille and accompanying headlights are a study in understated elegance, while slyly hinting at the aggressive nature of the new LS' performance. Its sleek styling and wide stance create a charismatic appearance, as well as a remarkably aerodynamic silhouette. Our antique walnut wood grows gradually darker towards the edges, a subtle tribute to the magnificent stain of a fine wood instrument. And careful consideration is evident in the rear-seat vanity mirrors, which lower from the ceiling for the convenience of your passengers.

2005 LEXUS LS Interior



Even in its most basic form, the LS is seriously indulgent. Take, for example, the rich beauty of its genuine wood and leather interior trim. Or its elegant wood- and leather-trimmed steering wheel, a feature that's inevitably an upgrade in most other luxury vehicles. There's also the convenience of HomeLink,[®] a series of three discreet buttons located on the overhead console that can be programmed to operate compatible garage doors, electric gates, or even to turn on electric lights at the touch of a button. On a beautiful day, the standard moonroof gives you nearly instant access to the sun or stars. And on a rainy day, you'll have a unique appreciation of its standard rain-sensing intermittent wipers and illuminated entry system with puddle lamps.

*Optional.
Vehicles shown with optional equipment.

The rear seat of the LS may be the best argument yet for a full-time chauffeur. Along with its indulgent leather-trimmed seats, a center console offers a host of options to make your ride more comfortable. Available rear-seat climate controls allow you to fine-tune your environment, while power headrests can be adjusted at your discretion. An available cool box, located between the seats, can keep beverages perfectly chilled. There are dual reading lamps* that conveniently swivel into position. The rear seats are even available with a heating and cooling system, reclining seatbacks and the ultimate luxury option, built-in massagers. And to ensure that the driver won't be envious of the rear passengers, the ergonomically sculpted driver's seat offers a sophisticated three-position, 24-function memory system to help you find your definitive comfort level.



2005 LEXUS **LS** Performance

The benefits of LS ownership go far beyond the lavish cabin area. Take, for example, the sixth speed that not only boosts the acceleration and responsiveness of the 290-horsepower V8, but also improves engine efficiency. This extra feature means that at cruising speeds, you will turn a lower RPM, improving fuel economy and reducing noise and vibration. Furthermore, this speed allows the LS to go from 0 to 60 in 5.9 seconds¹--something that sounds more like a performance sports car than one of the finest luxury sedans in the world. And for those who prefer the opportunity to manually shift gears at will, sequential shift will help fulfill this desire. And available 18-inch wheels² help enhance handling, while giving the LS a bold, rakish appearance. One of the more sophisticated features of the LS is its Dynamic Laser Cruise Control.³ When you approach a car traveling ahead on the road, the laser system is designed to detect it and automatically reduce speed, even applying the brakes if necessary to maintain the pre-set following distance. When the car ahead changes lanes, the system resumes your preprogrammed speed.



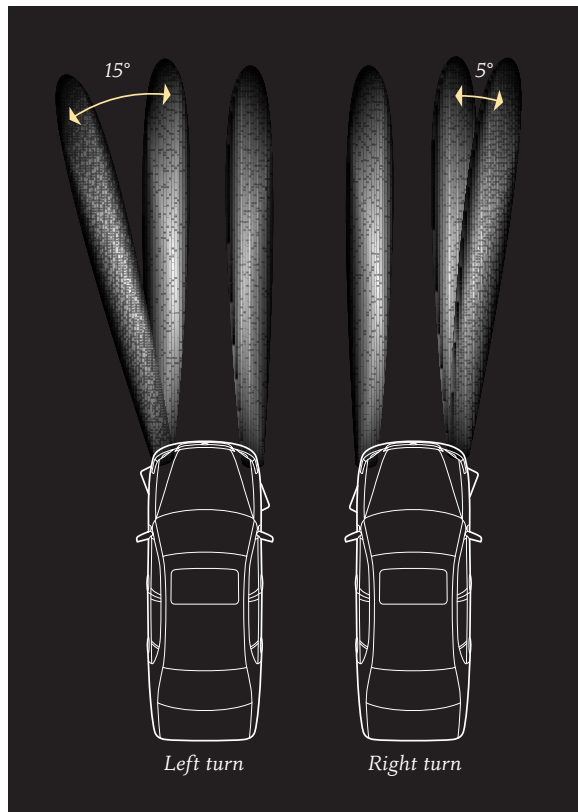
Since every driver is different, and every road is different, the LS offers three unique suspensions, each one specifically tuned for a different kind of driver. Its standard front and rear double-wishbone suspension gives the LS its famously smooth ride, which is further refined by stabilizer bars and gas-pressurized shock absorbers. For the driver who wants a bit of everything, an available Adaptive Variable Air Suspension offers two modes to choose from: Normal, for a luxurious cruise, and Sport, for tighter, more precise handling. In either mode, the system uses computers to literally read the road and smooth out the ride accordingly, with such immediate responsiveness that when the LS feels a bump in the road, the driver very well may not. There's also an available Euro-tuned Sport Suspension that uses stiffer springs, a thicker rear stabilizer bar and special suspension bushings for more dynamic, intense handling. It also includes the proverbial cherry on top, aggressive 18-inch wheels and lower-profile, higher-performance tires.²

*Optional.

^{1,2,3} See page 16 for more information.



2005 LEXUS LS Adaptive Front Lighting System



Vehicle shown with optional equipment.

Even our headlights are sophisticated. (Case in point, they have peripheral vision.) Along with our High-Intensity Discharge (HID) headlamps, the LS offers a standard Adaptive Front Lighting System (AFS) that is nothing short of revolutionary. AFS helps improve visibility at road curves by illuminating a portion of the road that is not seen using standard headlight technology. Taking into consideration conditions like vehicle speed and steering angle, the headlights are designed to swivel up to 15 degrees on the left, and five degrees on the right. These specific numbers emanated from intensive research into where drivers tend to gaze while taking on a curve in the road. So the headlights act more like your natural eye, pivoting in response to a turn, thus illuminating more of the road. For the LS driver, this translates into a more self-assured driving experience. Not to mention more polite, as AFS also reduces glare to oncoming traffic.

2005 LEXUS LS Technology

The LS can turn anything into a luxury. Even air. Imagine if the air around you always catered to your unspoken needs. When you felt warm, the air would instinctively understand and direct a calm, cooling breeze your way. Conversely, if you felt a chill, the air would immediately sense this and gently warm you. While it sounds like a fantasy, it is actually quite an accurate description of the Intuitive Climate-Control system featured in the LS. Using strategically placed solar sensors and temperature sensors, the system can sense hot and cool spots in the car and send the appropriate airflow specifically to those areas. It can even sense if there is a passenger in the front seat, and will direct air to them. If it senses that position is empty, it will continue to focus solely on the driver's needs. It has the uncanny ability to respond to voice commands to turn the system on or off, or to change the temperature.* And it even functions as an air filtration system, so the air around you is not only more temperate, but a measure cleaner as well. To that end, you also have the option of our highly sophisticated Air Purifier with Optical Deodorizer. Most filtration systems merely catch particles before they are emitted into the air. Our Air Purifier uses the science of ultraviolet light to actually break down and nearly eradicate bacteria, mold and odors. And lends a whole new meaning to the idea of pure luxury.



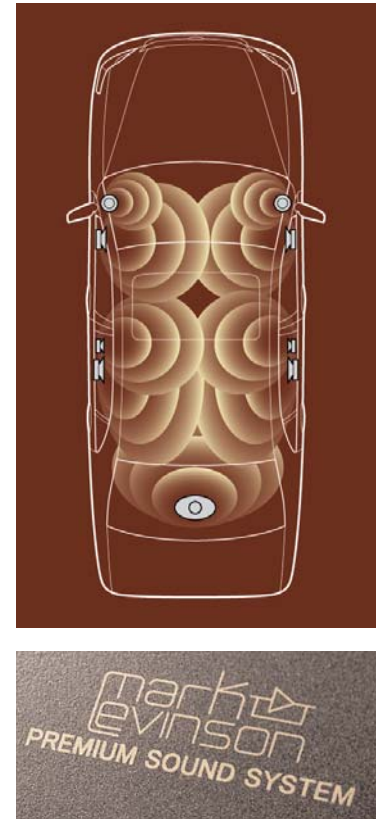
One of our most revolutionary options is the SmartAccess system that allows you to automatically communicate with your LS via a computerized key and electronic sensors located in different points on the vehicle that constantly read the environment. You simply keep the SmartAccess key in your possession,



such as in a pocket or a purse, and your LS will be able to intuitively respond to you. For example, when you approach the vehicle, the system detects the presence of the SmartAccess key on your person. It then checks a series of ID codes to help preserve your safety, and assumes an unlock standby condition. As soon as you touch the back of the door handle, your LS automatically unlocks for you. At the end of a drive, all you have to do is simply press the lock button on the outside door handle to activate the locks and the theft-deterrent system. SmartAccess even eliminates the need for a standard key to start your vehicle. When the SmartAccess key is detected inside the vehicle, the starter is pre-activated, allowing you to start the LS with a simple turn of the ignition switch.

*Available with optional Lexus voice-activated DVD Navigation System.

2005 LEXUS LS Mark Levinson® Audio System



The best seats in the house aren't in the house at all. True, when you're inside the LS, everything seems a little better, a little brighter. In the case of music, however, it actually is. Lexus has partnered exclusively with Mark Levinson,⁴ a company known the world over for their premium home systems, to create a vehicle audio system that delivers outstanding sound quality. Using the standard in-dash, single-feed, six-disc CD auto-changer, the available system boasts a staggering 240 watts⁵ and 11 speakers – all painstakingly engineered to bring out the complexities of each and every note. So you hear the deep resonance of the bass notes and the fluid composition of the melody with equal richness and clarity.

^{4,5} See page 16 for more information.

2005 LEXUS LS DVD Navigation System With Backup Camera

All those who travel in luxury require a good **concierge**. The available Lexus voice-activated DVD Navigation System⁶ is more than a directional tool. It's one step away from virtual omniscience. Designed to respond to more than 100 spoken commands, this system directs you with pinpoint precision to both preprogrammed destinations and over five million points of interest (POI). Care to know where the nearest ATM is? How about the closest museum or the neighborhood Italian restaurant? NAV can not only guide you there, it gives you a choice of up to three routes: the quickest, the shortest and an alternative. The system also features Bluetooth^{®7} technology that enables it to interact with compatible cell phones.* When you know your destination, you can input it as an address, with GPS coordinates or, in many cases, by simply typing in the phone number.



They say hindsight is 20/20. But having to back up your vehicle with only the aid of mirrors and a backward glance proves that, at least while driving, it's simply not the case. To help you see what's behind you with more clarity and ease, the LS offers the ingenious option of a backup camera.⁸ It consists of a tiny camera mounted above the rear license plate that transmits a clear, full-color picture of the area behind your vehicle. When the LS is put into reverse, the image is immediately displayed on the available in-dash LCD NAV screen. It's a feature that's not only beneficial for the world around you, it helps ward off unwelcome scratches. The LS also features light-emitting diode (LED) brake lights that illuminate brighter and clearer than a bulb. What's more, they never burn out - a convenient side benefit that helps keep other drivers on the road alert.

^{6,7,8} See page 16 for more information.

2005 LEXUS LS Safety



Vehicle shown with optional equipment.

A multitude of safety features all designed to protect one thing: your peace of mind. While the world inside the LS is always a place of comfort and tranquility, the world outside, sadly, is not. There are slippery roads and inclement weather to contend with, not to mention the troublesome inconsistencies of other drivers. However, the LS is armed with an impressive array of features to help keep your composure intact. In difficult driving conditions, Vehicle Stability Control (VSC)⁹ senses the onset of traction loss in a turn, automatically reduces throttle and applies the proper brakes to help keep you on track. On a slippery surface, if one rear wheel starts to spin, all-speed Traction Control (TRAC) can brake that wheel independently, automatically redistributing power to the wheel that has better grip. And along with its Anti-lock Braking System (ABS), the LS features Brake Assist,¹⁰ a technology that automatically engages during a panic-stop situation. Brake Assist detects an emergency stop by judging how quickly and forcefully the driver hits the brake pedal, then responds by applying maximum braking boost until the driver releases the pedal.

^{9,10} See page 16 for more information.

2005 LEXUS LS Safety

We've thought of everything, even the things no one likes to think about.

Rest assured that the LS is mightily prepared for a severe collision, however unlikely such an event may be. Our safety engineers have spent exhaustive hours in research and testing to provide the LS with advanced protection technology. To help provide the appropriate level of restraint, the driver's dual-stage front airbag¹¹ is designed to deploy at different speeds depending upon such variables as the force of the collision and the distance between the driver's seat and the steering wheel. The front passenger also has a dual-stage front airbag,¹¹ while side curtain airbags,¹¹ designed to help offer an added measure of head protection in a side collision, extend across the side windows of the front and rear doors. Side airbags are built into the front seats themselves to provide more consistent torso coverage regardless of the seat's position. And we've even added driver's and front passenger's knee airbags¹¹ to help add to overall occupant protection. Along with our extensive airbag system, every seating position in the LS is equipped with the primary restraint of three-point seatbelts, while the front and outboard rear seatbelts also feature force limiters and pre-tensioners.



The LS can be equipped with an available Pre-Collision System (PCS)¹² that uses millimeter-wave radar technology designed to detect potential obstacles ahead and to help determine in advance whether a crash is unavoidable. If PCS determines that it is, the driver's and front passenger's Pre-Collision seatbelts immediately retract to help provide appropriate occupant restraint. There's also the benefit of Pre-Collision Brake Assist,¹⁰ which automatically applies increased braking force after the driver applies the brakes to help reduce the impact speed. Even the essential structure of the LS helps protect you from outside harm. The strong steel-reinforced structure of the LS helps resist deformation, while specific crumple zones in the front and rear are designed to compress at a controlled rate of speed to help manage the energy of a severe impact.

^{10, 11, 12} See page 16 for more information
Vehicles shown with optional equipment. Japanese prototype crash-test vehicles shown.

2005 LEXUS **LS** Ownership Experience



At Lexus, everything we create is designed to help you make the most of every moment. Our thoughtful amenities, numerous safety features and superior customer service provide a level of comfort and pleasure that will enhance every aspect of your life. It is, in fact, our passionate pursuit of perfection that makes Lexus owners some of the most satisfied drivers on the road today. Not to mention a significant reason why so many of our existing customers keep coming back again and again. And we think you'll come to find that it is this very philosophy that helps make owning a Lexus just as rewarding as driving one. If you don't believe us, just ask anyone who's been behind the wheel of one of our vehicles.

CUSTOMER SATISFACTION.

Given our years of award-winning customer satisfaction, your experience at a Lexus dealership will be unlike any other. You may find such amenities as customer lounges, offices you can use for business, free pickup and delivery, service loaner vehicles, complimentary car washes and even concierge services. And every Lexus owner has access to our 24-hour emergency Roadside Assistance program for their first four years of ownership.* So if you ever need help, no matter what time of night or day, it's just a phone call away.

RESPONSIBLE THINKING.

At Lexus, we encourage wise use of natural resources, promote driving responsibly when traveling on-road and off, and try to reduce emissions whenever possible. In fact, all 2005 Lexus vehicles will be certified as either Low-Emission Vehicles (LEV) or Ultra-Low Emission Vehicles (U-LEV) or (U-LEV II). In short, we try to make Lexus a company that everyone can feel good about, whether you happen to be driving one or not.

VALUE/DEPENDABILITY/QUALITY.

The value of owning a Lexus involves much more than just its purchase price. It also includes our well-earned reputation for vehicle dependability, projected low repair costs and high retained value, in addition to such intangibles as outstanding customer satisfaction, unparalleled quality, peace of mind and loyalty. And while you may not be able to put a price tag on such intangibles, the feeling can sometimes be more reassuring than money in the bank.

*Coverage only available in the continental U.S. and Canada. Please see your local Lexus dealer for details on our Roadside Assistance program.

2005 LEXUS LS Options & Accessories

OPTION PACKAGES

Ultra Luxury Selection

Mark Levinson⁴ 11-speaker 240-watt⁵ Premium Audio System • Lexus voice-activated DVD Navigation System⁶ with backup camera⁸ and Bluetooth⁷ technology • Perforated leather seating surfaces • Dynamic Laser Cruise Control³ • Adaptive Variable Air Suspension • Laminated side glass • Manual rear-door window sunshades • Intuitive Parking Assist • Front and rear climate-comfort seats with heat/cool knob • Headlamp washers • Power door closers • SmartAccess • **Rear-Seat Luxury Group:** Seat power slide adjuster with power headrest, memory and massager • Air conditioner controls with Air Purifier • Cool box • Audio controls • Swivel-type reading lamps

Ultra Luxury Selection with Pre-Collision System (PCS)¹²

Mark Levinson⁴ 11-speaker 240-watt⁵ Premium Audio System • Lexus voice-activated DVD Navigation System⁶ with backup camera⁸ and Bluetooth⁷ technology • Perforated leather seating surfaces • Dynamic Radar Cruise Control³ • Pre-Collision System (PCS)¹² • Adaptive Variable Air Suspension • Laminated side glass • Manual rear-door window sunshades • Intuitive Parking Assist • Front and rear climate-comfort seats with heat/cool knob • Headlamp washers • Power door closers • SmartAccess • **Rear-Seat Luxury Group:** Seat power slide adjuster with power headrest, memory and massager • Air conditioner controls with Air Purifier • Cool box • Audio controls • Swivel-type reading lamps

Custom Luxury Selection

Mark Levinson⁴ 11-speaker 240-watt⁵ Premium Audio System • Lexus voice-activated DVD Navigation System⁶ with backup camera⁸ and Bluetooth⁷ technology • Perforated leather seating surfaces • Dynamic Laser Cruise Control³ • Laminated side glass • Intuitive Parking Assist • Front climate-comfort seats with heat/cool knob • Headlamp washers • Power door closers • Rear-seat heaters

Custom Luxury Selection with Pre-Collision System (PCS)¹²

Mark Levinson⁴ 11-speaker 240-watt⁵ Premium Audio System • Lexus voice-activated DVD Navigation System⁶ with backup camera⁸ and Bluetooth⁷ technology • Perforated leather seating surfaces • Dynamic Radar Cruise Control³ • Pre-Collision System (PCS)¹² • Laminated side glass • Intuitive Parking Assist • Front climate-comfort seats with heat/cool knob • Headlamp washers • Power door closers • Rear-seat heaters

Premium Package

Intuitive Parking Assist • Front climate-comfort seats with heat/cool knob • Rear-seat heaters

Modern Luxury Package

Mark Levinson⁴ 11-speaker 240-watt⁵ Premium Audio System • Lexus voice-activated DVD Navigation System⁶ with backup camera⁸ and Bluetooth⁷ technology • Intuitive Parking Assist • Front climate-comfort seats with heat/cool knob • Rear-seat heaters

Sport Package with Polished-Finish Alloy Wheels

Euro-tuned Sport Suspension • 18-in polished-finish alloy wheels with P245/45R18 tires²

Sport Package with Chrome Wheels

Euro-tuned Sport Suspension • 18-in chrome wheels with P245/45R18 tires²



INDIVIDUAL OPTIONS AND ACCESSORIES

18-in polished-finish alloy wheels • All-season tires • Ashtray kit • Car cover • Cargo net • Lexus Chrome Wheels (17-in or 18-in)² • Trunk mat • Wheel locks • XM[®] Satellite Radio*



*Functioning XM Satellite Radio requires XM Satellite Radio capacity, XM Satellite Radio receiver and satellite monthly service fee. See your Lexus dealer for further details. Reception of the XM signal may vary depending on location. All fees and programming subject to change. Subscriptions subject to the terms and conditions available at www.xmradio.com. Available only in the 48 contiguous United States.

^{2, 3, 4, 5, 6, 7, 8, 12} See page 16 for more information.

2005 LEXUS LS Specifications

BODY, DIMENSIONS

Type	Five-passenger luxury sedan
Construction	Welded-steel unibody
Overall Length	197.4 in
Width	72.0 in
Height	58.7 in (57.9 in with available Adaptive Variable Air Suspension)
Wheelbase	115.2 in
Ground Clearance	5.7 in (5.9 in with available Adaptive Variable Air Suspension)
Curb Weight	3,990 lb
Fuel-tank Capacity	22.2 gallons
Trunk Capacity	20.2 cubic feet (without rear A/C) 17.5 cubic feet (with rear A/C)
Headroom (front/rear)	38.1/37.9 in
Legroom (front/rear)	44.0/37.6 in
Shoulder Room (front/rear)	58.3/58.2 in



CHASSIS

Vehicle Stability Control (VSC) ⁹	Electronic system that monitors and helps control the loss of traction in a turn by using yaw-rate, deceleration, vehicle-speed and steering-wheel-angle sensors. Modulates engine power and applies individual brakes as necessary. Integrates Anti-lock Braking System (ABS), Brake Assist ¹⁰ and Traction Control (TRAC).
Suspension	Front: Independent, double-wishbone with high-mount aluminum upper arm, coil springs, monotube gas-pressurized shock absorbers with internal rebound springs, anti-lift and anti-squat geometry, stabilizer bar. Rear: Independent, double-wishbone with aluminum upper arm and carrier, coil springs, monotube gas-pressurized shock absorbers, anti-lift and anti-squat geometry, stabilizer bar.
Steering	Vehicle-speed-sensing, progressive power-assisted rack-and-pinion. 3.52 turns, lock to lock.
Brakes	Four-wheel vented, power-assisted discs, with four-sensor, four-channel Anti-lock Braking System (ABS) with Brake Assist, ¹⁰ integrated with Vehicle Stability Control (VSC). ⁹ Four-piston front calipers. 12.4-in (front), 12.2-in (rear) discs.
Wheels and Tires ²	17 x 7.5-in alloy wheels with 225/55HR17 tires. Optional: 17 x 7.5-in Lexus Chrome Wheels with 225/55HR17 tires. 17 x 7.5-in alloy or Lexus Chrome Wheels with 225/55HR17 all-season tires. 18 x 7.5-in alloy or Lexus Chrome Wheels with 245/45R18 all-season tires. Euro-tuned Sport Suspension: Requires 18 x 7.5-in alloy wheels with 245/45R18 tires. Full-size spare with alloy wheel.
Transmission	Six-speed sequential-shift automatic Electronically Controlled Transmission with intelligence (ECT-i). Overdrive fifth and sixth gear, auto-select shift program, engine/transmission networking, flex-lockup torque converter.
Drive Wheels	Rear, with standard Traction Control (TRAC).
Final Drive Ratio	3.77:1

DRIVETRAIN

^{2, 9, 10} See page 16 for more information.

2005 LEXUS LS Specifications (Continued)

ENGINE

Type	90° V8, aluminum block and heads, certified Ultra-Low Emission Vehicle (U-LEV)
Displacement	4.3 liters (261.9 cubic inches)
Valvetrain	Four cam, four valves per cylinder, with continuously Variable Valve Timing with intelligence (VVT-i)
Compression Ratio	10.5:1
Horsepower at RPM	290 hp @ 5,600
Torque at RPM	320 lb-ft @ 3,400

SAFETY & SECURITY

Driver's and front passenger's dual-stage airbags (SRS)^{††} • Front seat-mounted side airbags (SRS)^{††} • Front and rear side curtain airbags (SRS)^{††} • Driver's and front passenger's knee airbags (SRS)^{††} • Three-point seatbelts for all seating positions, pre-tensioners with force limiters for front and outboard rear seats • Automatic Locking Retractor/Emergency Locking Retractor (ALR/ELR) seatbelts for all seating positions (driver's - - ELR only) • Child Restraint Seat (CRS) tether anchor brackets for all rear seating positions • Anchor lower mounts for outboard rear seats • Four-wheel ventilated power-assisted disc brakes • Four-sensor, four-channel Anti-lock Braking System (ABS) • Brake Assist^{††} • Traction Control (TRAC) • Vehicle Stability Control (VSC)[†] • Highly rigid body structure with front and rear crumple zones • Side-impact door beams (front gusseted) • Reinforcements in pillars • Impact-dissipating ribbing in pillars and upper headliner • Collapsible steering column • Optitron instrumentation • Adaptive Front Lighting System (AFS) • High-Intensity Discharge (HID) headlamps with dynamic auto leveling • Headlamp washers* • Daytime running lights • Integrated foglamps • Water-repellent front windshield and front-door glass • Rain-sensing variable intermittent windshield wipers with mist cycle • Power-adjustable, auto-folding outside mirrors with defoggers, puddle lamps and auto tilt-down in reverse • Vehicle theft-deterrent and engine immobilizer system, with in-key transponder • Rear-window defogger with auto-off timer • First aid kit • Tool kit • Tire Pressure Monitor System[†] • Backup camera*⁸

PERFORMANCE

0-60 MPH Acceleration	5.9 seconds ¹
1/4-Mile Acceleration	14.5 seconds ¹
Top Track Speed	130 mph (electronically limited) ¹
Estimated Fuel Consumption	18/25 mpg city/highway [†]
Aerodynamic Drag Coefficient	0.26 with standard suspension or available Euro-tuned Sport Suspension (0.25 with available Adaptive Variable Air Suspension)
Turning Circle	35.8 ft



Vehicle shown with optional equipment.

LUXURY

Golden bird's-eye maple, walnut or antique walnut and leather interior trim • Wood- and leather-trimmed steering wheel and shift knob • Steering-wheel-mounted audio controls and cruise control • Power tilt-and-telescopic steering column with automatic tilt-away • Automatic on/off headlamps with 30-second auto-off delay • Multi-information display with drive computer • Dual-zone automatic climate control with interior air filter, smog sensor and automatic recirculation mode • Front climate-comfort seats with heat/cool knob and rear-seat heaters* (requires perforated leather) • Heated front and rear seats* • Rear climate-comfort seats with heat/cool knob* • Outside temperature gauge • Lexus seven-speaker 178-watt** Premium Sound System with Automatic Sound Levelizer (ASL) • In-dash, single-feed, six-disc CD auto-changer • SmartAccess* • Mark Levinson[®] 11-speaker 240-watt⁵ Premium Audio System with Automatic Sound Levelizer (ASL) and in-dash, six-disc CD auto-changer* • Dynamic Laser Cruise Control*³ • Intuitive Parking Assist* • In-glass antenna with FM-diversity system • Dual-compartment center console with accessory power outlet and mobile phone storage capability • Multi-adjustable power front seats and headrests • Height-adjustable headrests for all rear seats • Dual-function lumbar support for driver's seat • Lexus Memory System for power driver's seat (except lumbar), outside mirrors, driver's shoulder belt anchor height and steering wheel • Power tilt-and-slide moonroof with one-touch open/close and sliding sunshade • HomeLink[®] universal transceiver to operate compatible garage, gate, home lighting and home security systems • Power windows with one-touch auto open/close feature with night illumination • Exterior glass with UV reduction • Electrochromic (auto-dimming) inside and outside mirrors • Power door locks with anti-lockout and driver's two-turn unlock feature • Multifunction, in-key remote entry system with rolling-code technology • Illuminated entry system with puddle lamps • Interior electronic trunk-lid and fuel-filler door releases with valet lockout feature for trunk • Dual cupholders front and rear • Power trunk closer • Power door closers* • Retained accessory power for windows and moonroof • Compass • Carpeted floor mats • Customized Body Electronics System (C-BEST) to personalize electronic functions • Euro-tuned Sport Suspension* (requires 245/45R18 tires² and 18-in alloy wheels) • Adaptive Variable Air Suspension* • Power rear-window sunshade • Front and rear lighted vanity mirrors • Scheduled maintenance indicator light

*Optional.

[†]The Lexus Tire Pressure Monitor System alerts the driver when tire pressure is critically low. For optimal tire wear and performance, tire pressure should be checked regularly with a gauge; do not rely solely on the monitor system. See your *Owner's Manual* for details.

^{††}EPA-estimated mpg. Actual mileage may vary.

**178 watts at 0.1% THD.

^{1,2,3,4,5,7,8,9,10} See page 16 for more information.



2005 LEXUS LS Colors

EXTERIOR COLORS



BLACK CHERRY PEARL
Cashmere, Ash,
Ecru* or Black* Leather



FLINT MICA
Ash, Black, Ecru*
or Saddle* Leather



BLUE ONYX PEARL
Cashmere, Ash, Ecru*
or Saddle* Leather

STANDARD LEATHER AND WOOD OPTIONS

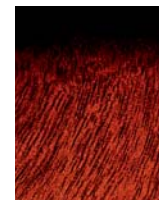


GOLDEN BIRD'S-EYE MAPLE
Cashmere Leather

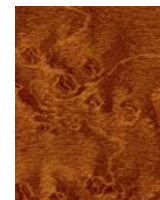


WALNUT
Ash or Black Leather

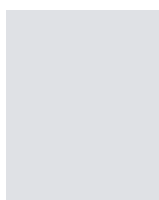
CUSTOM LUXURY/ULTRA LUXURY SELECTIONS



ANTIQUE WALNUT
Saddle or Black Leather



GOLDEN BIRD'S-EYE MAPLE
Ecru Leather



MERCURY METALLIC
Ash, Black
or Ecru* Leather



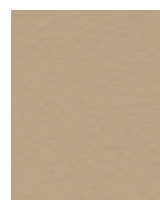
CYPRESS PEARL
Cashmere, Ash
or Ecru* Leather



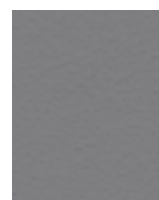
BRIARWOOD PEARL
Cashmere, Ecru,*
Saddle* or Black* Leather



MYSTIC GOLD METALLIC
Cashmere, Ecru*
or Saddle* Leather



Cashmere Leather†



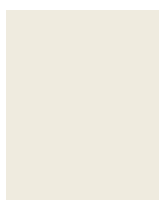
Ash Leather†



Ecru Leather with
Perforated Inserts



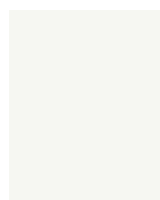
Saddle Leather with
Perforated Inserts



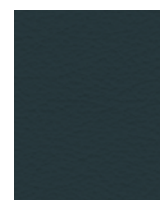
MOONLIGHT PEARL
Cashmere, Ash,
Ecru* or Saddle* Leather



BLACK ONYX
Cashmere, Ash, Black,
Ecru* or Saddle* Leather



CRYSTAL WHITE
Cashmere, Ash, Black,
Ecru* or Saddle* Leather



Black Leather†



Black Leather with
Perforated Inserts

*Requires Custom Luxury or Ultra Luxury Option Selections.
†Comes with perforated inserts when equipped with optional front climate-comfort seats.
See your Lexus dealer for exact vehicle colors.

2005 LEXUS LS Warranty

WARRANTY

Four-year/50,000-mile Lexus Limited Warranty, Six-year/70,000-mile Powertrain Warranty, Six-year/unlimited-mileage Corrosion Perforation Warranty. All warranties with zero deductible. See the *LS Owner's Manual Supplement* at your Lexus dealer for details.

FOOTNOTES & DISCLAIMERS

1. These performance capacity figures are for comparison only, and were obtained with prototype vehicles by professional drivers using special safety equipment and procedures. Do not attempt.
2. Tires fitted with 18 x 7.5-in and 17 x 7.5-in wheels are expected to experience greater wear than conventional tires. Tire life may be substantially less than 20,000 miles, depending on driving conditions.
3. Dynamic Laser or Dynamic Radar Cruise Control was designed to assist the driver and is not a substitute for safe and attentive driving practices. Please see your *Owner's Manual* for important cautions and instructions.
4. Mark Levinson is a registered trademark of Harman International Industries.
5. Continuous average power, all channels driven, at 0.01% THD; 20-20,000 Hz.
6. The Lexus DVD Navigation System is designed to assist in locating an address or point of interest. Discrepancies may be encountered between the system and your actual location. Changes in street names, road closures, traffic flow or other road system changes may affect the accuracy of the mapping software. Rely upon your common sense to decide whether or not to follow a specified route. Detailed coverage not available in every city. Optional periodic geographic updates available at an additional cost. See your *Navigation System Owner's Manual* and your Lexus dealer for further details.
7. While there are several Bluetooth phones in the market, Lexus recommends the phones listed on its Web site because they have been tested and meet Lexus' high standards for voice quality and functionality. Note that the recommendation of Lexus is not a warranty of the performance for any phone and that some problems may occur with any type of handset based on the service coverage available in your area.
8. The backup camera, available only with the navigation system, does not provide a comprehensive view of the entire rear area of the vehicle. You should also look around outside your vehicle and use your mirrors to confirm rearward clearance.
9. Lexus Vehicle Stability Control (VSC) is an electronic system designed to help the driver maintain vehicle control under adverse conditions. It is not a substitute for safe driving practices. Factors including speed, road conditions and driver steering input can all affect whether VSC will be effective in preventing a loss of control. Please see your *Owner's Manual* for further details.
10. Brake Assist is designed to help the driver take full advantage of the benefits of ABS. It is not a substitute for safe driving practices. Braking effectiveness also depends on proper brake-system maintenance and tire and road conditions.
11. The Lexus driver's, front passenger's, front seat-mounted side airbags, driver's and front passenger's knee airbags and side curtain airbags are Supplemental Restraint Systems (SRS). The driver's and front passenger's airbags and driver's and front passenger's knee airbags are designed to deploy in severe (usually frontal) collisions where the magnitude and duration of the forward deceleration of the vehicle exceed the design threshold level. The side airbags and side curtain airbags are designed to deploy in certain types of severe side-impact collisions. In all other accidents, the airbags will not deploy. To decrease the risk of injury from a deploying airbag, always wear your seatbelt, sit upright in the middle of the seat, and do not lean against the door. Do not put objects in front of an airbag or around the seatback. Do not use a rearward-facing child seat in any front passenger seat. The force of a deploying airbag SRS may cause serious injury or death. Please see your *Owner's Manual* for further instructions.
12. The Lexus Pre-Collision System is designed to help reduce the crash speed and damage in certain frontal collisions only. It is not a collision avoidance system and is not a substitute for safe and attentive driving. System effectiveness depends on many factors, such as speed, driver input and road conditions. Please see your *Owner's Manual* for further information.

Specifications, features, equipment, technical data, performance figures, options, and color and trim are based upon information available at time of posting, are subject to change without notice, are for mainland U.S.A. vehicles and may differ in the state of Hawaii, Puerto Rico, the U.S. Virgin Islands and in other regions.

Some vehicles shown with optional equipment. Optional equipment listed may not be available separately or in all regions. See your Lexus dealer for details. Lexus reminds you to wear seatbelts, secure children in rear seat, obey all traffic laws and drive responsibly.

For more information, call 800-USA-LEXUS (872-5398). To learn more about your financing options, contact your Lexus dealer or call Lexus Financial Services at 800-874-7050.

All photographs appearing in this e-brochure are the copyrighted property of the photographers contracted by or on behalf of Lexus and may not be reproduced in any way whatsoever without prior written permission from both Lexus and the applicable photographer(s) or their authorized agent(s).

