

# RENAULT LAGUNA



**DRIVE THE CHANGE**



# WHO BETTER THAN RENAULT TO SERVICE YOUR RENAULT?

Your new Renault Laguna is covered by a 3-year warranty package – the first 2 years of unlimited mileage Renault manufacturer warranty, followed by a further year of cover up to 100,000 miles. Paintwork is also guaranteed for 3 years while the anti-corrosion warranty runs for 12 years. In addition, the Renault Assistance plan ensures prompt help in the UK and Northern Ireland for manufacturer defects for 36 months. For full details please refer to the Renault warranty terms and conditions, available from your Renault Dealer or from [www.renault.co.uk](http://www.renault.co.uk).

## FINANCE OPTIONS

There are a wide variety of ways in which the purchase of a new car can be financed. Renault Finance offers all of them, so whether you're a fleet buyer or a private buyer, Renault Finance is ideally placed to tell you which plan or combination of plans best suits your needs and circumstances.

## SERVICE INTERVALS

All models 18,000 miles / 2 years Except:

<b>13,000 miles / 2 years:</b> <ul style="list-style-type: none"><li>• Clio, Modus, Grand Modus dCi 86 engines*</li></ul>	<b>18,000 miles / 1 year:</b> <ul style="list-style-type: none"><li>• Espace all engines</li><li>• New Kangoo 1.6 16V 105 engine</li></ul>
<b>12,600 miles / 2 years:</b> <ul style="list-style-type: none"><li>• New Kangoo dCi 68 and 86 engines**</li></ul>	<b>12,500 miles / 1 year:</b> <ul style="list-style-type: none"><li>• Laguna 2.0 205 Turbo, 3.5 V6 240 Auto</li></ul>
<b>12,500 miles / 2 years:</b> <ul style="list-style-type: none"><li>• New Mégane, New Scénic, New Grand Scénic dCi 86 engines</li><li>• Twingo 1.2 TCe 100 engine</li><li>• Twingo Renaultsport and New Mégane Coupé Renaultsport engines</li></ul>	<b>12,000 miles / 1 year:</b> <ul style="list-style-type: none"><li>• New Kangoo 1.6 8V engine</li></ul>
<b>12,000 miles / 2 years:</b> <ul style="list-style-type: none"><li>• Clio, Modus, Grand Modus 1.2 TCe 100 engines</li><li>• Clio Renaultsport engines</li></ul>	

Service required at the mileage or time interval shown, whichever is sooner.

## ENGINES WITH OIL CONTROL SYSTEM (OCS)

- 1.2 TCe 100 / 1.4 TCe 130 / 2.0 TCe 180
- 1.6 WT 128 / Renaultsport 133 and 250
- Diesel engines

OCS monitors driving conditions that directly affect the quality of your engine oil, protecting your engine from excessive wear and possible bearing failure.

Under certain conditions; low speeds, traffic jams, door-to-door deliveries (engine turning with little distance travelled) or in high gear for long periods e.g. sport driving, towing a caravan/trailer over 500kg (engine turning at higher revolutions) the vehicle's service interval may be shortened and you will be alerted, via the instrument panel service indicator, that a Renault Service is required earlier (refer to driver's handbook for details).

## EXTENDING YOUR WARRANTIES AND COVER

Renault Extended Warranty allows you to extend your Renault Warranty up to 5 years or 80,000 miles. Renault Assistance Added Cover provides you with additional cover for incidents not covered by Renault Assistance: punctures, incorrect (or lack of) fuel, keys lost, stolen or locked inside the vehicle and incidents involving caravans or trailers.

For full information on these products please ask your Renault Dealer or log on to [www.renault.co.uk](http://www.renault.co.uk) and click on 'Owner Services', where you can also buy securely online.

## SERVICE PLANS

Renault Service Plans are available on new and used vehicles# and allow you to budget for your vehicle's servicing with convenient payment options and inflation proof pricing. For more information please ask your Renault Dealer or log on to [www.renault.co.uk](http://www.renault.co.uk) and click on 'Owner Services'.

# participating dealers only

## RENAULT ACCIDENT SUPPORT LINE - 0800 085 8005

The Renault Accident Support Line (RASL) is a dedicated service from Renault for all Renault drivers and their families, no matter what car they drive. This service is available at no cost to you, regardless of fault. RASL will deal with every aspect of your claim, from ensuring you are recovered to a Renault Approved Accident Repair Centre to dealing with all insurance companies giving you total convenience and peace of mind.

0800 085 8005 is the only number you need so please programme it into your phone and make sure that in the event of an accident you call us first and we will take care of everything.

## RASL WILL:

- Arrange recovery of your vehicle from the scene of the accident to a Renault Approved Accident Repair Centre
- Organise the repairs at a Renault Approved Accident Repair Centre using only Renault Original Parts
- Deal with all insurance companies, both yours and the other parties'
- Provide a like for like replacement vehicle if the accident is not your fault
- Pursue the at fault party for all associated costs if the accident is not your fault
- Use the same paint as during manufacture
- Provide a 5 year repair guarantee on paint and repairs
- Ensure you do not have to pay a policy excess if the accident is not your fault
- Provide the same service for your family free of charge regardless if their car is a Renault or not
- Ensure that yours and your passengers' safety are guaranteed and your five star NCAP rating will not be compromised

## RENAULT NETWORK SERVICES

No-one is better placed than Renault to maintain, fit and repair your Renault, fast. The Renault Minute (maintenance and repair with no appointment necessary) and Renault Rapide Bodycare (bumper scuffs, dings and dents, windscreen, stone chips and interior repairs...) services deliver the highest level of repair and maintenance and offer a full year's guarantee on Original Renault Parts. And don't forget to have a look at our wide range of additional equipment and accessories!

## RENAULT INSURANCE

A car as well designed as your Renault deserves an insurance policy to match. Renault Insurance has been specifically created to provide superb protection for you and your car.\*\*\* In addition to a very competitive premium, Renault Insurance also includes: a free 24-hour accident recovery programme; Renault Genuine parts fitted in Renault Accident Repair Centres, protecting your 12 year anticorrosion warranty; repairs guaranteed for 3 years; a courtesy car for the duration of any repairs - subject to availability when you use an approved repairer; payment by instalments - subject to status.

Lines open 8am – 8pm weekdays, 9am – 2pm Saturdays. Calls may be recorded. Terms and Conditions apply. All quotes are based on individual circumstance and subject to insurers underwriting criteria. Renault insurance is arranged and administered by Equity Insurance Brokers Limited, which is authorised and regulated by the Financial Services Authority. Registered Office: Library House, New Road, Brentwood, Essex, CM14 4GD. Registered in England No. 258414

† 100,000 miles for Laguna and Espace.

\* Up to build date 23 April 2010, service intervals are 12,000 miles / 2 years

\*\* Up to build date 30 May 2010, service intervals are 12,000 miles / 2 years

\*\*\* Note: this does not apply to vans or Renaultsport cars

## CUSTOMER SERVICES

Renault knows the value of communicating with its customers and we have established effective ways to keep in touch with you. If after speaking to your local Renault dealership you are not completely satisfied, please contact the Renault UK Customer Service Department on 0800 072 3372 (Mon-Fri 8.30am to 5.30pm). You can also visit our website [www.renault.co.uk](http://www.renault.co.uk) Or write to us at: Renault UK Ltd, The Rivers Office Park, Denham Way, Maple Cross, Rickmansworth, Hertfordshire, WD3 9YS.

**Find out more about your vehicle at [www.e-guide.renault.com](http://www.e-guide.renault.com)**





**WHY RENAULT? WE'RE DRIVEN BY A PASSION TO MEET AND EXCEED PEOPLE'S NEEDS, AND THAT'S WHAT DRIVES THE INDUSTRY FORWARD. IT'S BEEN THAT WAY WITH US FOR OVER A HUNDRED YEARS. BUT IN TODAY'S RAPIDLY-CHANGING ENVIRONMENT, IT'S MORE IMPORTANT THAN EVER THAT WE SOURCE NEW SOLUTIONS THAT WILL SAFEGUARD ALL OUR FUTURES.**



We know that the car is at a turning point, it has to evolve whether you believe in global warming or not; to emit less in cities, to make less noise and to use increasingly scarce energy more efficiently.

At Renault we are working to create more affordable cars, with radically lower CO<sub>2</sub> emissions. For the widest possible audience. Today that's our collection of 35 'eco<sup>2</sup>' models. eco<sup>2</sup> indicates that the vehicle produces CO<sub>2</sub> emissions lower than 140 g/km, it includes at least 5% recycled plastic in its plastic mass, and has been designed in such a way that 95% of the materials used could have a second life (recyclable for other use or as a source of energy). In addition eco<sup>2</sup> means that our factories are ISO 14001 certified.

Starting next year there will be a groundbreaking range of electric vehicles, from a nippy town car to a comfortable family saloon and a small van. They will be affordable to run – you will be able to drive up to 100 miles using a battery that costs typically £3 to charge, and a lot less using cheaper tariffs. And parking and congestion charges should all be lower, too.

We believe it's time to make the car a driver of progress once more. We are determined to drive that change. Soon you will be able to join us..

**RENAULT. DRIVE THE CHANGE.**







RENAULT LAGUNA

**A LEADER IN TECHNOLOGY,  
SAFETY AND DRIVING PLEASURE.  
STATE-OF-THE-ART TECHNOLOGY:  
SERIOUS PLAYTIME.**



# NEW DESIGN

DISCOVER NEW SENSATIONS

From its muscular bodywork to its streamlined headlights, the first time you catch sight of the Laguna is just a taster of the feeling you'll get when you drive it. Its 2.0 dCi engine, the most powerful in its class, confirms this first impression. The engine's power, both supple and seamless, sets the tone from the moment you drive off. Acceleration is lively, controlled by the 6-speed manual or auto-adaptive automatic gearbox. Agile and responsive, the Laguna is at one with the road. And you're at one with the Laguna.





# INTUITIVE TECHNOLOGY

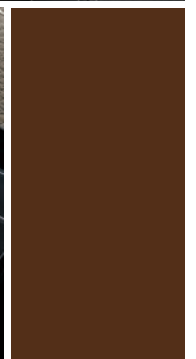
STRIKES THE PERFECT CHORD

On board the Laguna, technology, pleasure and comfort combine. Door opening and the ignition are controlled by a hands-free card. You approach, and the doors open... You step out, and they lock! The handbrake also switches on and off automatically. The joystick allows you to control the TomTom® Carminat navigation system intuitively. A Renault exclusive, this feature is particularly simple to use and offers a whole raft of functions: detailed and accurate maps on a large display (14cm), speed camera warnings\*, speed limits, points of interest and easy updating using the TomTom Home® application. In addition, by choosing the Live Services, you will benefit from high definition traffic information and mobile speed camera alerts\* in real time.

For music lovers, Renault and BOSE® have collaborated to develop an audio system specifically adapted to the Laguna. All the acoustic components of the interior, including the size of the vehicle, compared to the angle of the windshield, have been considered. This exclusive audio system is adapted to the particular acoustics of the Laguna, in order to deliver a rich and balanced sound.

\* Depending on local regulations







1

### 1. AIR CONDITIONING

The automatic Dual Zone air conditioning, with automatic recycling via the toxicity sensor, allows each front passenger to select, to the degree, the temperature that best suits them.

### 2. MULTI-FUNCTIONAL TUNEPPOINT

Connect your MP3 player using the USB and iPod® sockets and control the system through the steering wheel controls.



2

### 3. PANORAMIC SUNROOF

For greater brightness, there are two anti-UV glass panels, one of which is mobile and opens in four positions, whilst the other is fixed.

### 4. AUTOMATIC HANDBRAKE

When the engine is turned off, the system automatically activates the handbrake.



3

### 5. BOSE® AUDIO SYSTEM

Through a thorough study of the acoustic environment of the cabin and Bose® expertise, all passengers will benefit from the realism and high quality of the sound.



4

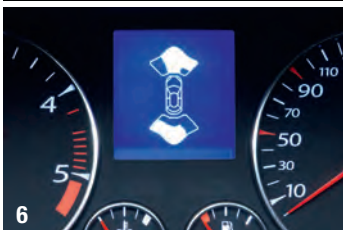
### 6. FRONT AND REAR

#### PARKING PROXIMITY SENSORS

To help parking manoeuvres, the parking proximity sensors warn you of any obstacles located at the front and back thanks to the combination of sound (sequence of beeps that become more frequent with shorter distances) and visuals (on the LCD screen).



5



6

### 1. BI-XENON DIRECTIONAL HEADLIGHTS

Offering a deep-reaching light, closely resembling natural daylight, the headlights optimise anticipation and control. The external side-lamp technology lights the road as you are cornering.



1

### 2. ASR

The active traction control, helps with pulling away in all low-grip conditions.



2

### 3. DYNAMIC ESC (ELECTRONIC STABILITY CONTROL)

With the ASR traction control and the CSV understeer control function, your vehicle's stability is taken care of in difficult road conditions.



3

### 4. ISOFIX SYSTEM

The rear side seating is equipped with an ISOFIX fastening system, for securing one or two child seats in complete safety.



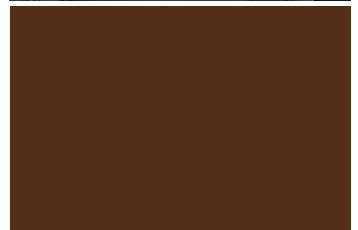
4

### 5. ANTI-WHIPLASH FRONT HEADRESTS

Can be adjusted by height and tilt to help prevent the risk of whiplash.



5



# STORAGE



## 1. GLOVEBOX

The glovebox has a generous storage volume.



## 3. CENTRE CONSOLE STORAGE

Practical and easy access storage for front passengers.



## 4. SEAT-BACK POCKETS

Placed on the back of the front seats, these pockets keep documents, books and magazines handy.



## 5. NET STORAGE

Practical and discreet, the net can store all kinds of documents and books.



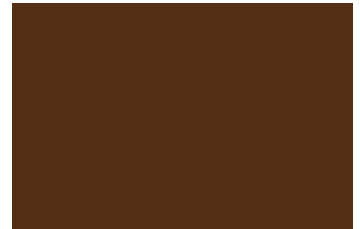
# ADAPTABILITY

## 1-2-3. ADAPTABILITY

In one click of the handles accessible from the boot or from the rear seats, the seats fold by thirds (1/3 or 2/3) or fully, to form a maximum sized loading area with a flat floor.

## 4. LUGGAGE COVER

Retracts semi-automatically with just one touch.



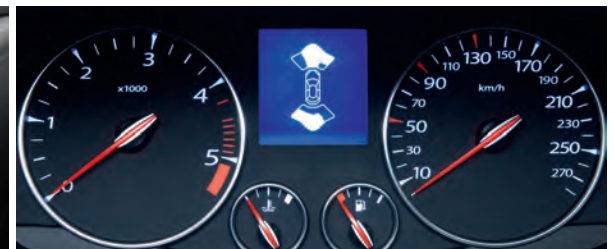
## TRIMS



### EXPRESSION

The Laguna Expression features a dark carbon interior with grey stitching. The multi-adjustable seats ensure comfort is a priority for all occupants.

**DYNAMIQUE TOMTOM**  
A modern and sporty interior with satin detailing to enhance the cabin.





#### **INITIALE LUX PACK**

The ultimate in style and technology, with stylish Dark Carbon perforated leather seats, console and interior trims in high gloss Piano Black and a 10 speaker BOSE Sound System.



## TRIMS



### **DYNAMIQUE TOMTOM WITH COOL GREY SPORT CLOTH UPHOLSTERY**

All the sporty style of the Dynamique TomTom with Cool Grey sport cloth upholstery

# EQUIPMENT

## SAFETY AND SECURITY

- ABS with EBD (Electronic Brake Distribution) and Brake Assist
- Deadlocking and engine immobiliser
- Driver and front passenger two stage auto-adaptive airbags
- Front lateral airbags
- Front and rear curtain airbags
- ESC (Electronic Stability Control)
- ASR traction control
- CSV understeer control
- Deactivation of front passenger airbag
- ISOFIX child seat mounting points on rear outer seats
- R.A.I.D. (Renault Anti Intruder Device) automatic door locking
- Driver's double seatbelt pretensioners
- Anti whiplash front headrests
- Insurance approved engine immobiliser (Thatcham category 2)
- Insurance approved alarm (Thatcham category 1)

## COMFORT, DRIVING AND VERSATILITY

- Body coloured door mirrors and bumpers
- Remote control central locking
- Double optic headlights
- Height adjustable driver's seat with lumbar support
- Keyless car with Renault card
- Height and reach adjustable steering wheel
- Trip computer
- Power steering
- Tinted windows
- Electric / heated door mirrors
- "See Me Home" headlights

## CORE FEATURES

## EXPRESSION ADDITIONAL EQUIPMENT TO CORE FEATURES

- Alloy wheels - 16" "Broadway"
- 4 x 15W single CD/radio MP3 with fingertip control
- AUX input in centre console
- Front fog lights

- Manual air conditioning
- Upholstery - Dark Carbon sport style
- Windows - front and rear electric with anti-pinch facility (on the front)

## EXPRESSION

## DYNAMIQUE TOMTOM ADDITIONAL EQUIPMENT TO EXPRESSION (INCLUDES CORE FEATURES ABOVE)

- Automatic parking brake
- Automatic headlights
- Automatic rain sensitive windscreen wipers
- Carpet mats
- Cruise control
- Carminat TomTom Live navigation system with Western European mapping
- Door mirrors - electric folding and heated

- Dual Zone climate control
- Electrochrome rear view mirror
- Keycard - hands free
- Parking sensors - rear
- Speed limiter
- Windows - extra tinted rear and tailgate (Sport Tourer only)

## DYNAMIQUE TOMTOM

# ACCESSORIES



## SPORT AND DESIGN

Make your Renault undeniably yours.

### 1. SPORT SPOILER

Give your Laguna Hatch a sporty touch with the boot spoiler that enhances its dynamic lines.

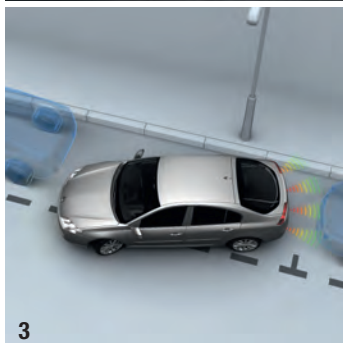


## PROTECTION AND COMFORT

Keep you and your Renault safe and sound. Protection and safety are number one priorities for Renault. Renault Accessories has developed a range of products that will help keep you and your car in complete safety.

### 2. MATS

Mats are an essential accessory to protect your car from everyday dirt and debris. Designed to fit perfectly into your Laguna, the inbuilt stud fixings ensure they fit safely with no slipping.



### 3. PARKING SENSORS

This clever system detects objects behind your vehicle as well as making parking in the smallest spaces so much easier. Ultrasonic sensors in the bumper emit a beep and as objects get closer, the sound becomes louder and more frequent.



### 4. CHILD SEATS

Children are most vulnerable, so their safety is of the highest importance to Renault. Your Laguna is equipped to fit ISOFIX child seats so you can relax knowing that your children are secure and comfortable in their Duo Plus seat, watching the world go by.



**TOURING**  
You, your Renault and the kitchen sink. Planning ahead to your holidays? Renault Accessories has developed a range of accessories to maximise the load carrying capacity of your Laguna. If you need more than your boot space, take a look at our towing and roof accessories.

### 5. ROOF BARS, SKI RACK, BIKE RACK

Whether you are planning a ski trip or just a day out with the bikes, we have an accessory for you. Designed to work in harmony with your car, these aluminium Touring Line roof bars are lightweight and easy to mount. Our bike racks can be mounted on the roof or a tow bar. They are City Crash tested to ensure maximum safety and security.

### 6. ROOF BOX

Going on holiday and need to pack the kitchen sink? Our range of Touring Line roof boxes are the ideal way of increasing your boot space. They are lockable and are designed to perfectly fit the Renault Touring Line Roof Bars.

### 7. TOW BAR

Whether you need to pull a trailer, a caravan or simply mount one of our bike racks, Renault has the tow bar for you.

## TECHNOLOGY

Cutting edge technology in your Renault.

### 8. DVD SYSTEM

"Are we nearly there yet?" Boredom on long journeys is a thing of the past with our DVD player. Mounted onto the back of the headrest, it provides hours of entertainment for the rear passengers. Comes with two screens and infra red headphones.





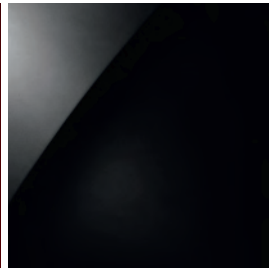
# COLOURS



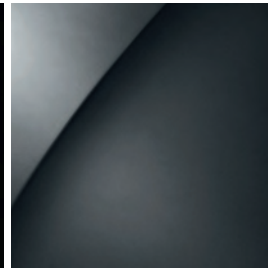
GLACIER WHITE



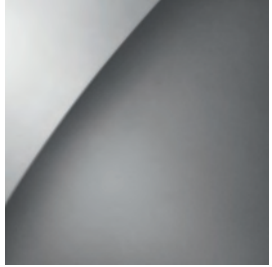
VENETIAN RED



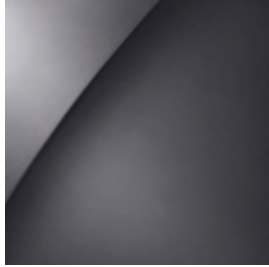
PEARL BLACK



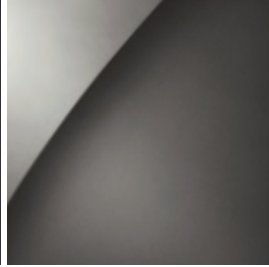
ECLIPSE



MERCURY



OYSTER GREY



STONE\*

\*Available with Initiale Lux Pack only

It should be noted that printing limitations do not permit these subtle paintwork shades to be shown with absolute accuracy. Only personal inspection of the Laguna at your local Renault Dealer will reveal it in its true colours. From time to time changes are made to the colour range. Please check availability with your local Renault Dealer.

	Glacier White NM 369	Pearl Black MS 676	Mercury MI D69	Eclipse Grey MI B66	Stone MI HNK	Venetian Red MI NND	Oyster Grey MI KNG
<b>Expression</b>	●	○	○	○	-	○	○
<b>Dynamique TomTom</b>	●	○	○	○	○	○	○
<b>Initiale Lux Pack</b>	-	●	○	○	○	○	○

● Standard ○ Option ○\* Option on dCi 180 engine only

NM = Non Metallic Super Gloss MI = Metallic Illusion MS = Metallic Super Gloss

# WHEELS



16" 'BROADWAY' ALLOY WHEELS  
Standard on Expression and  
Dynamique TomTom



17" 'TENERIFE' ALLOY WHEELS  
Optional on Dynamique TomTom



18" 'INTERLAGOS' CHROME  
SHADOW ALLOY WHEELS  
Optional on Dynamique TomTom



18" 'CELSIUM' ALLOY WHEELS  
Standard with Initiale Lux Pack

# TECHNICAL SPECIFICATIONS

ENGINE	RENAULT eco2 2.0 16V 140		RENAULT eco2 1.5 dCi 110 FAP		RENAULT eco2 2.0 dCi 150 FAP		2.0 dCi 175 Auto FAP		2.0 dCi 180 FAP	
ENGINE BODY TYPE	Hatch	Sport Tourer	Hatch	Sport Tourer	Hatch	Sport Tourer	Hatch	Sport Tourer	Hatch	Sport Tourer
Body Type Classification	•	•	•	•	•	•	•	•	•	•
Dynamique TomTom	•	•	•	•	•	•	•	•	•	•
GT Line TomTom	•	•	•	•	•	•	•	•	•	•
<b>VERSIONS AVAILABLE WITH THIS ENGINE</b>										
Expression	•	•	•	•	•	•	•	•	•	•
<b>ENGINE CHARACTERISTICS</b>										
Emissions conformance	Euro 5	Euro 5	Euro 5	Euro 5	Euro 5	Euro 5	Euro 5	Euro 5	Euro 5	Euro 5
Engine type	M4R 746	M4R 746	K9K 782	K9K 782	M9R 814	M9R 814	M9R 815	M9R 815	M9R 820	M9R 820
With particle filter (FAP)	-	-	FAP	FAP	FAP	FAP	FAP	FAP	FAP	FAP
Induction capacity (cc)	1997	1997	1461	1461	1995	1995	1995	1995	1995	1995
Bore x stroke (mm)	84 x 90.1	84 x 90.1	76 x 80.5	76 x 80.5	84 x 90	84 x 90	84 x 90	84 x 90	84 x 90	84 x 90
Compression ratio	10.2 : 1	10.2 : 1	15.6 : 1	15.6 : 1	16 : 1	16 : 1	16 : 1	16 : 1	16 : 1	16 : 1
Balancing shaft	No	No	No	No	No	No	No	No	Yes	Yes
Maximum power (kw ISO)	103	103	81	81	110	110	127	127	131	131
(hp DIN)	140	140	110	110	150	150	175	175	180	180
(rpm)	6000	6000	4000	4000	4000	4000	3750	3750	3750	3750
Maximum torque (Nm ISO)	195	195	240	240	340	340	360	360	400	400
(rpm)	3750	3750	1750	1750	2000	2000	2000	2000	2000	2000
Fuel type	Petrol	Petrol	Diesel	Diesel	Diesel	Diesel	Diesel	Diesel	Diesel	Diesel
Injection type	Multipoint / sequential	Multipoint / sequential	Commonrail Direct injection	Commonrail Direct injection	Commonrail Direct injection	Commonrail Direct injection	Commonrail Direct injection	Commonrail Direct injection	Commonrail Direct injection	Commonrail Direct injection
No. of cylinders	4	4	4	4	4	4	4	4	4	4
No. of valves	16	16	8	8	16	16	16	16	16	16
Valve gear	DOHC	DOHC	SOHC	SOHC	SOHC	SOHC	SOHC	SOHC	SOHC	SOHC
Camshaft drive	Chain	Chain	Belt	Belt	Chain	Chain	Chain	Chain	Chain	Chain
<b>WEIGHTS</b>										
Maximum (driver only) towing weight braked (kg)	1300	1300	1300	1300	1500	1500	1500	1500	1500	1500
(lb)	2867	2867	2867	2867	3308	3308	3308	3308	3308	3308
Kerb weight (will vary depending on version / equipment) (kg)	1378	1398	1398	1418	1492	1509	1528	1553	1511	1522
(lb)	3038	3083	3083	3127	3290	3327	3369	3424	3332	3356
<b>GEARBOX</b>										
Number of forward gears	6	6	6	6	6	6	6	6	6	6
Manual / Automatic	Manual	Manual	Manual	Manual	Manual	Manual	Automatic	Automatic	Manual	Manual
Gearbox type	TL4	TL4	TL4	TL4	PK4	PK4	AJ0	AJ0	PK4	PK4
Vehicle speeds @ 1,000 rpm (mph)										
1 <sup>st</sup>	5.08	5.08	4.96	4.96	5.59	5.59	5.22	5.22	5.09	5.09
2 <sup>nd</sup>	8.77	8.77	9.50	9.50	10.39	10.39	9.12	9.12	9.46	9.46
3 <sup>rd</sup>	12.27	12.27	13.99	13.99	15.76	15.76	13.85	13.85	14.35	14.35
4 <sup>th</sup>	15.33	15.33	18.98	18.98	21.38	21.38	18.88	18.88	20.41	20.41
5 <sup>th</sup>	18.68	18.68	24.25	24.25	26.87	26.87	25.63	25.63	26.33	26.33
6 <sup>th</sup>	22.26	22.26	28.99	28.99	32.45	32.45	31.96	31.96	31.19	31.19
Reverse	5.19	5.19	5.02	5.02	5.97	5.97	5.41	5.41	5.43	5.43
<b>BRAKING SYSTEM</b>										
ABS	Std	Std	Std	Std	Std	Std	Std	Std	Std	Std
Front Ø / width (mm)	296 / 26	296 / 26	280 / 24	280 / 24	296 / 26	296 / 26	320 / 28	320 / 28	320 / 28	320 / 28
Rear Ø / width (mm)	300 / 11	300 / 11	300 / 11	300 / 11	300 / 11	300 / 11	300 / 11	300 / 11	300 / 11	300 / 11
<b>SUSPENSION</b>										
Front / rear					MacPherson and anti-roll bar / Autodirectional flexible axle in "H"					
Front anti-roll bar Ø (mm)	24	24	24	24	24	24	24	24	24	24
Rear anti-roll bar Ø (mm)	28.8	28.8	28.8	28.8	29.6	29.6	30.5	30.5	31.3	31.3
<b>STEERING</b>										
Power assisted	Hydraulic by Electropump	Hydraulic by Electropump	Hydraulic by Electropump	Hydraulic by Electropump	Hydraulic variable	Hydraulic variable	Hydraulic variable	Hydraulic variable	Hydraulic variable	Hydraulic variable
Turning circle between kerbs/walls (m)					11.05 / 11.64 (11.40 / 12.05 with 18" Wheels)					
<b>WHEELS AND TYRES</b>										
Without alloy wheels	No	No	No	No	No	No	No	No	No	No
Standard wheel size (")	16	16	16/17	16/17	16/17	16/17	16/17	16/17	18	18
Reference wheels										
Reference tyres	EXPRESSION 205/60 R16 92H	EXPRESSION 205/60 R16 92H	DYNAMIQUE TOMTOM 205/60 R16 92H	DYNAMIQUE TOMTOM 205/60 R16 92H	DYNAMIQUE TOMTOM 205/60 R16 92H	DYNAMIQUE TOMTOM 205/60 R16 92H	GT LINE TOMTOM 215/55 R16 93V	GT LINE TOMTOM 215/55 R16 93V	GT LINE TOMTOM 215/50 R17 95V	GT LINE TOMTOM 215/50 R17 95V
			DYNAMIQUE TOMTOM 215/50 R17 95V	DYNAMIQUE TOMTOM 215/50 R17 95V	DYNAMIQUE TOMTOM 215/50 R17 95V	DYNAMIQUE TOMTOM 215/50 R17 95V	GT LINE TOMTOM 225/45 R18 95W	GT LINE TOMTOM 225/45 R18 95W	GT LINE TOMTOM 225/45 R18 95W	GT LINE TOMTOM 225/45 R18 95W
Spare wheel	Inflation kit	Inflation kit	Inflation kit	Inflation kit	Inflation kit	Inflation kit	Inflation kit	Inflation kit	Inflation kit	Inflation kit
<b>CAPACITY</b>										
Fuel tank (litres/gallons)					66 (14.52)					
Oil reservoir capacity (litres)	4.2	4.2	4.5	4.5	6.6	6.6	6.6	6.6	6.6	6.6
<b>PERFORMANCE</b>										
SCX (Aerodynamic Coefficient)	0.645	0.696	0.645	0.696	0.645	0.696	0.645	0.696	0.645	0.696
0-62mph (0-100kph) (seconds)	9.1	9.3	11.9	12.1	9.5	10.0	9.6	9.8	8.5	8.7
Maximum speed (mph (kph))	131 (210)	127 (205)	120 (193)	117 (188)	131 (210)	131 (210)	137 (220)	134 (215)	136 (222)	135 (217)
Standing 0tr mile (400m) (seconds)	16.6	16.7	18.2	18.3	16.8	17.2	16.8	16.9	16.2	16.3
Standing 1000m (seconds)	30.2	30.5	33.1	33.4	30.6	31.0	30.5	30.8	29.6	29.9
<b>EMISSIONS</b>										
CO <sub>2</sub> (g/km)	173	175	120	123	136	136	163	165	150	152
<b>FUEL CONSUMPTION</b>										
Urban Cycle (mpg)	28.0	27.7	47.9	47.9	41.5	41.5	34.4	34.4	36.7	36.7
(litres/100km)	10.1	10.2	5.9	5.9	6.8	6.8	8.2	8.2	7.7	7.7
Extra Urban Cycle (mpg)	46.3	45.6	70.6	68.9	64.2	64.2	54.3	53.3	60.1	58.8
(litres/100km)	6.1	6.2	4.0	4.1	4.4	4.4	5.2	5.3	4.7	4.8
Combined Cycle (mpg)	37.7	37.2	60.1	60.1	54.3	54.3	45.6	44.8	49.5	48.7
(litres/100km)	7.5	7.6	4.7	4.7	5.2	5.2	6.2	6.3	5.7	5.8
<b>SERVICING INTERVALS*</b>										
Oil Change Interval in miles / 1 year (whichever is the sooner)	18000	18000	18000**	18000**	18000**	18000**	18000**	18000**	18000**	18000**
Oil Change Interval in miles / 2 years (whichever is the sooner)										
* Service interval may be reduced if vehicle is subject to severe usage. CO <sub>2</sub> , benefit in kind and mpg figures may vary according to optional equipment.										

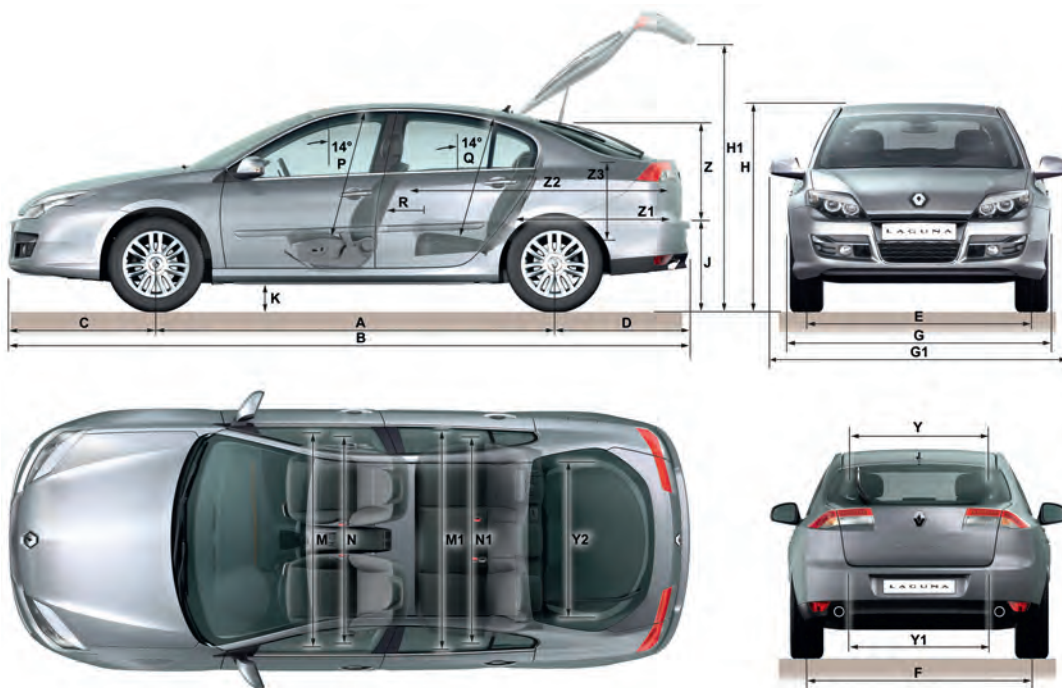


Laguna meets three criteria:

- the vehicle produces CO<sub>2</sub> emissions lower than 140g / km or operates on biofuels.
- It is manufactured in an ISO 14001 certified factory, minimising its environmental impact,
- and it includes at least 5% recycled plastic in its plastic mass.

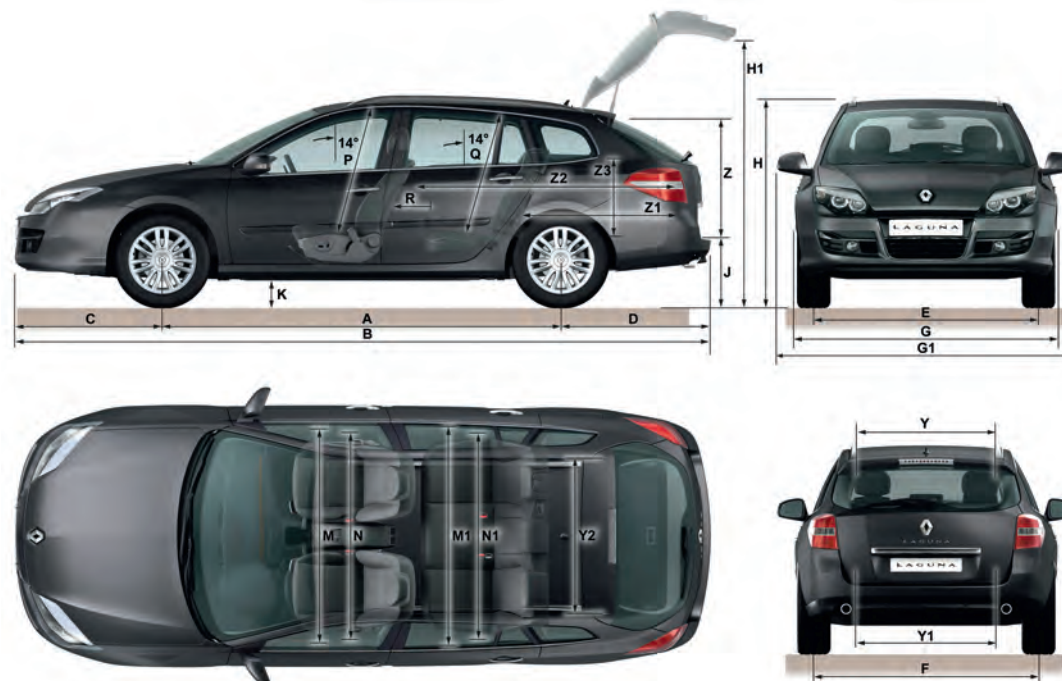
With **eco2**, Renault displays its environmental commitment at every stage of the life cycle of the vehicle. The vehicle has been designed in such a way that 85% of the materials used could have a second life (recyclable for other use or as a source of energy), and that pollution control at the end of the vehicle's life (in particular extraction of fluids) is made easier.

# DIMENSIONS



## LAGUNA HATCH

<b>Boot volume dm<sup>3</sup></b>	450
<b>Dimensions (mm)</b>	
A - Wheelbase	2756
B - Overall length	4695
C - Front overhang	1014
D - Rear overhang	926
E - Front track	1557
F - Rear track	1512
G - Overall width without door mirrors	1811
With door mirrors	2060
H - Overall height	1445
H1 - Height with boot open	1900
J - Unladen sill height	711
K - Ground clearance, laden	>120
M - Front elbow width	1487
M1 - Rear elbow width	1490
N - Front shoulder width	1440
N1 - Rear shoulder width	1400
P - Front headroom at 14°	890
Q - Rear headroom at 14°	842
R - Rear legroom	220
Y - Upper width of boot opening	870
Y1 - Lower width of boot opening	910
Y2 - Width between wheel housing	1000
Z - Height of boot opening	tbc
Z1 - Maximum load length behind rear seats	1005
Z2 - Maximum load length behind front seats	1805
Z3 - Height under parcel shelf	470



## LAGUNA SPORT TOURER

<b>Boot volume dm<sup>3</sup></b>	508
<b>Dimensions (mm)</b>	
A - Wheelbase	2756
B - Overall length	4803
C - Front overhang	1014
D - Rear overhang	1031
E - Front track	1557
F - Rear track	1512
G - Overall width without door mirrors	1811
With door mirrors	2060
H - Overall height	1445
H1 - Height with boot open	1900
J - Unladen sill height	546
K - Ground clearance, laden	>120
M - Front elbow width	1487
M1 - Rear elbow width	1490
N - Front shoulder width	1440
N1 - Rear shoulder width	1400
P - Front headroom at 14°	890
Q - Rear headroom at 14°	895
R - Rear legroom	220
Y - Upper width of boot opening	890
Y1 - Lower width of boot opening	1030
Y2 - Width between wheel housing	1000
Z - Height of boot opening	tbc
Z1 - Maximum load length behind rear seats	1120
Z2 - Maximum load length behind front seats	1910
Z3 - Height under parcel shelf	436

# EQUIPMENT AND OPTIONS

	EXPRESSION	DYNAMIQUE TOMTOM
<b>SAFETY</b>		
<b>Active and Passive Safety Features</b>		
ABS with EBD (Electronic Brake Distribution)	●	●
ESC (Electronic Stability Control)	●	●
ASR traction control	●	●
CSV understeer control	●	●
Driver and front passenger two stage auto-adaptive airbags	●	●
Front thorax / side airbags	●	●
Curtain airbags	●	●
Height adjustable seatbelts and pretensioners (front and rear outer seats and 3-point rear seatbelts)	●	●
R.A.I.D. (Renault Anti Intruder Device) with automatic door locking	●	●
Front headrests with height adjustment	●	●
Rear headrests	●	●
ISOFIX child seat mounting points on rear outer seats	●	●
<b>See and Be Seen Visibility Features</b>		
Heated rear windscreen	●	●
Electrochrome rear view mirror	-	●
Electrically heated and adjustable door mirrors (wide angle on driver's side)	●	-
Electrically adjustable, heated and folding door mirrors (wide angle on driver's side)	-	●
Electrically heated, adjustable and folding door mirrors (wide angle on driver's side) with memory	-	P1
Automatic headlights	P2	●
Automatic rain sensitive windscreen wipers	P2	●
Double optic headlights	●	●
Bi-Xenon directional headlights (incorporating Daytime Running Lights) with headlight washers	-	○
Front fog lights	●	●
See Me Home headlights	●	●
<b>Vehicle Security</b>		
Insurance approved engine immobiliser	●	●
Remote control central locking	●	●
Renault keycard	●	-
Renault hands free keycard	-	●
Insurance approved category 1 alarm system	●	●
Deadlocking	●	●
<b>EXTERIOR FEATURES</b>		
<b>Exterior Styling</b>		
16" 'Broadway' alloy wheels	●	●
17" 'Tenerife' alloy wheels	-	○
18" 'Interlagos' alloy wheels - chrome shadow	-	○
18" 'Celsium' alloy wheels	-	P1
Body coloured door mirrors	●	●
Body coloured exterior door handles	●	●
Silver chrome window surrounds	●	●
Metallic paint	○	○ / P1
Silver roof bars - longitudinal (only on Sport Tourer)	●	●
Chrome twin exhausts (excluding dCi 110)	-	●
<b>COMFORT AND CONVENIENCE</b>		
<b>Driving Technology</b>		
Cruise control	○	●
Speed limiter	○	●
Rear parking sensors	○	●
Front parking sensors	-	○ / P1
Electronic automatic parking brake	P2	●
Leather steering wheel	●	●
GT leather steering wheel	-	-
Leather gearknob	●	●
Aluminium gearknob	-	-
Tyre inflation kit	●	●
Emergency spare wheel	○	○
<b>Windows and Blinds</b>		
Electric front windows - driver's with "one-touch" facility	●	●
Electric rear windows	●	●
Extra tinted rear windows and tailgate (only on Sport Tourer)	-	●
Opening tailgate window (only on Sport Tourer)	-	○
Electric panoramic sunroof	-	○

	EXPRESSION	DYNAMIQUE TOMTOM
<b>Ventilation</b>		
Air conditioning	●	-
Dual-zone climate control (left and right front controls) with carbon and odour filter	P2	●
<b>Seating, Carpet Mats, Interior Styling</b>		
Super Fold System (only on Sport Tourer) - folding flat rear seats in one touch	●	●
Height adjustable driver's seat with lumbar support	●	●
Passenger seat with height adjustment	●	●
Sports front seats with extra lateral support	●	●
Dark Carbon sport upholstery	●	●
Cool Grey sport upholstery	-	○
Dark Carbon perforated leather upholstery	-	P1
Electrically adjustable and heated front seats with driver's memory function	-	P1
Carpet mats (front and rear)	-	●
<b>Storage and Functional Features</b>		
Rear central armrest with two cup holders	●	●
12 volt power point located in central console storage	●	●
<b>Interior Lighting</b>		
Two front courtesy lighting panels (with two reading lights)	●	●
Rear reading centre light	●	●
Sun visors - driver and passenger with vanity mirror	●	-
Sun visors - driver and passenger with illuminated vanity mirrors	P2	●
<b>In car entertainment and Communication</b>		
Fingertip control audio system	●	●
MP3 connection point (RCA) in centre console	●	-
BOSE Sound System: 10 speakers: single CD / radio with MP3, Bluetooth connectivity, steering wheel controls and digital amplifier	-	P1
Carminat TomTom Live navigation system (UK map) with joystick	-	●
Carminat TomTom Western European mapping	-	●
<b>Option Packs</b>		
<b>P1 - Initiale Lux Pack:</b> 18" 'Celsium' alloy wheels, BOSE Sound System with 10 speakers and digital amplifier, high gloss piano black centre console / interior trims, electric folding / heated door mirrors with memory, front parking sensors, metallic paint, electrically adjustable heated front seats with driver's memory function, Dark Carbon perforated leather upholstery, multi-functional TunePoint	-	○
<b>P2 - Comfort Pack:</b> automatic rain sensitive wipers, automatic headlights, electronic automatic parking brake, dual-zone climate control, illuminated vanity mirrors on driver / passenger sun visors	○	-
<b>P3 - Technology Pack:</b> Carminat TomTom Live navigation system with joystick and multi-functional TunePoint	○*	-
● Standard   ○ Option (stand-alone)   P Available as part of a Pack (number denotes pack)   - Not available		
* must be ordered with Comfort Pack		
** must be ordered with Technology pack on Expression versions		
‡ on dCi 180 FAP version only		
‡‡ Not available on GT Line dCi 180 FAP		

# RENAULT LAGUNA



(Enter Renault's world at Sky Guide 883 and [www.renault.tv](http://www.renault.tv))

Although every effort has been made to ensure that the information contained within this brochure is as accurate and up to date as possible, Renault U.K. reserves the right to modify its models without notice, including their characteristics, specifications, equipment and accessories. Brochures inevitably become out of date or inaccurate in some respects, in that such characteristics, specifications, equipment, or accessories may be changed after the publication date given below and can differ from the descriptions given. It is therefore necessary to check with your Renault Dealer before purchasing any product that the characteristics, specifications, equipment or accessories of the vehicle on order are as advertised. Publication date April 2011.