

RENAULT SPORT



RENAULT *SPORT*

DRIVE THE CHANGE





RENAULT SPORT

RENAULT SPORT PASSION, PERFORMANCE, PANACHE	02 > 03
RENAULT SPORT F1 DRIVEN BY PASSION	04 > 05
GORDINI RENAULT SPORT DESIGN	06 > 09
TWINGO GORDINI RENAULT SPORT SPECIFICATIONS & FEATURES	10 > 11
CLIO GORDINI RENAULT SPORT SPECIFICATIONS & FEATURES	12 > 13
CLIO RENAULT SPORT DESIGN SPECIFICATIONS & FEATURES	14 > 17 18 > 19
MÉGANE GT-LINE DESIGN SPECIFICATIONS & FEATURES	22 > 25 26 > 27
MÉGANE RENAULT SPORT DESIGN	28 > 35
MÉGANE RS SPORT FEATURES	> 36
MÉGANE RS CUP FEATURES	> 37
MÉGANE RENAULT SPORT SPECIFICATIONS & FEATURES	38 > 39
RENAULT ACCESSORIES RENAULT SPORT OPTIONAL ACCESSORIES	40 > 41
RENAULT SAFETY OUR COMMITMENT TO SAFETY	42 > 43
RENAULT DRIVER ACADEMY ADVANCED DRIVER TRAINING	> 44
RENAULT DRIVE THE CHANGE - CONFIANCE	> 45

PASSION
PERFORMANCE
PANACHE



It takes a performance car enthusiast to appreciate a car that has been developed by people who share the same passion for taking an already great car, and turning it into the ultimate experience. This kind of car has to have style, it has to have performance and it has to have street cred.

The team at Renault Sport gives you all that in bucket loads. We've introduced some of the performance enhancing DNA that Renault developed during the last century of motorsport. From the classic city-to-city races at the dawn of the automobile, through the Le Man and the Monte Carlo Rally to today's Formula 1, Renault has always been a winner.

All that winning experience has been distilled and purified by Renault Sport, the specialist unit that creates high-performance cars like the sublime Mégane Trophy, Mégane Renault Sport, Clio Renault Sport and the Twingo Renault Sport.

The result is a choice of high-performance vehicles that take an uncompromising approach to performance and comfort, for the ultimate Renault driving experience.

RENAULT POWERS FORMULA 1 WORLD CHAMPIONS



RED BULL RACING RENAULT SEBASTIAN VETTEL

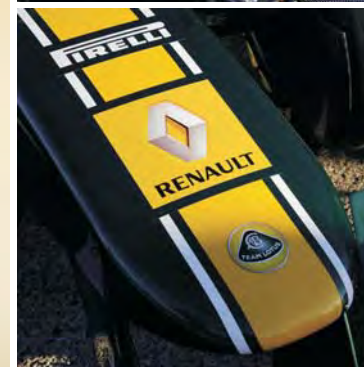
MANUFACTURERS' AND DRIVERS'
2011 FIA FORMULA ONE™
WORLD CHAMPIONS

Quality

Performance

Reliability

RENAULT SPORT F1



FORMULA 1 DRIVEN BY PASSION

Formula 1 is a powerful source of innovation and a valuable test-laboratory. The close collaboration between Renault's Technocentre research and development headquarters and the F1 technical centres enable us to come up with new ideas that can later be transferred to production cars. It also enables us to develop engines that are technically and mechanically advanced, a characteristic recognised across the world and one that has, for instance, produced the first direct-injection petrol engine and the 'common-rail' diesel with variable geometry turbo.

The Renault F1 heritage stems back to 1977 and has transgressed mechanical and technological advancements within the racing arena. These advancements have since been translated to the customer through revolutionary Renault Sport models.

Our edge over the past comes through impressive performance facts and figures on paper, which is "realised" on the road.

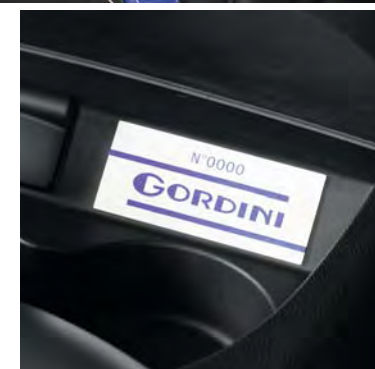
From 2013, new F1 regulation will spur the development of more environment-friendly powertrains that can be directly applied to mass production vehicles. These powertrains will feature outstanding quality and reliability. For F1 cars and mass production models alike, the highest standards on quality are essential to vehicle projects. All of which makes Formula 1 an international showcase for the Renault quality excellence.



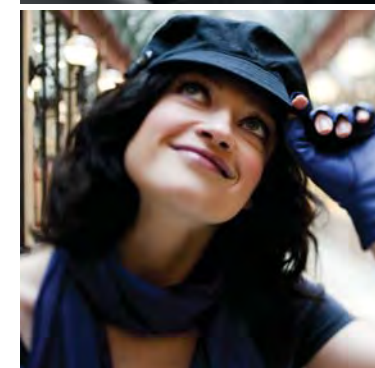
EMOTION & PASSION 100% CHIC! BE GLORIOUS. BE GORDINI ■



So chic! Twingo & Clio Gordini Renault Sport brandish the blue and white banner, celebrating truly stirring French expertise. The white stripes - the real signature of the Gordini label - are still there, but brought right up to date with a subtle G shape in metallic varnish. Stamped on the sides, the Gordini Series badges are a nod to the famous Gordini coupés. In black and white, the shiny body parts show a tendency for elegant contrast. The 17" aluminium black diamond-finish rims are real works of metallic art. The Gordini signature: an authentic and exclusive allure. So French.



Born in 1964, the R8 Gordini stamped its blue and white mark on the 60s and 70s. The blue and white-striped racing car offered affordable performance and fun, and appeared in a number of legendary films, giving a wide audience the chance to discover motorsport. During the Gordini years, sporting achievements were numerous, in both rally driving and on the racecourse. At the 24-hour race in Le Mans in 1979, the winning Alpine Renault engine also bore the Gordini hallmark. Later, Renault Sport relit the torch of sporting and technological excellence, winning several Formula 1 championship titles and offering an innovative, high-performance range of vehicles. Today, Renault Sport is paying homage to the Wizard, reigniting the blue and white blaze. And Gordini (again) becomes the hallmark of a collection of chic, sporty models, designed for people who dream of style, pleasure and performance.



TWINGO
GORDINI



COMBINING SPORTS PERFORMANCE WITH EVERYDAY USE

Wow, guaranteed sensations! Twingo & Clio Gordini Renault Sport offer you affordable performance for everyday driving. Tuned to provide a truly sporty sound, the mechanics are powerful, with all the focus on a thrilling driving experience. The reactive yet comfortable chassis and dynamic, precise steering are designed to help you get the best out of their potential. While staying totally safe.

Elegant and sporty, the Gordini Renault Sport cockpits have a stylish blue, white and black colour scheme. In this unique atmosphere, each detail adds to the overall exclusive feel. The gear lever has a Gordini signed knob and a blue gaiter. Contrasting stitching to the leather upholstery emphasises the shape of the seats, the dashboard, the door trim and the leather steering wheel, where the "dead centre" is marked by two white stripes. The white counter backgrounds and the glossy black features on the instrument panel give the interior a chic, sporty feel. In case you failed to notice, the numbered plates are there to remind you that you are on board an authentic and exclusive Gordini Renault Sport original. Inimitable.

**SO SPORT
SO CHIC !**
BE GLORIOUS. BE GORDINI ■

CLIO
GORDINI



TWINGO GORDINI RENAULT SPORT



Twingo Gordini is the response of Renault Sport Technologies' experts to the double challenge of delivering sports performance and equipment that is suitable for everyday use. Twingo Gordini Renault Sport's balanced sports handling ensures that the car is easy and fun to drive, in addition to combining performance with a high standard of safety.

The Sport chassis has been engineered for the best and safest balance between driving enjoyment and performance. It features a lower centre of gravity thanks to a 10mm lower ride-height. Stiffer springs and uprated dampers contribute to the car's sporty handling, while firmer bushing has enhanced directional precision front and rear.



Gordini leather steering wheel with racing stripes.



Gordini detailed gearknob and gearknob surround.



The blue accented Gordini rev counter is located directly behind the steering wheel.



Gordini Series badging.



Exclusive identification numbered plate.



Gordini carpet mats.



17" 'Gordini' alloy wheels with polished face and black inserts.



Dark grey leather faced front seats with blue details and embossed Gordini logo.

TECHNICAL SPECIFICATIONS

ENGINE	1.6 16V
Induction capacity (cc)	1 598
Bore x stroke (mm)	79.5 x 80.5
Compression Ratio	11.0 : 1
Maximum power (kW@rpm)	98 @ 6 750
Maximum torque (Nm@rpm)	160 @ 4 400
WEIGHT (kg)	
Licensing mass	1049
TRANSMISSION	
Number of forward gears	5
STEERING	Variable electric power assisted
Turning circle (kerb to kerb)	10.39/10.76m
TYRES	
Rim size	17"
Tyre size	195/40 R17
CAPACITIES	
Fuel tank (l)	40
Luggage capacity (cm ³)	230/959
SUSPENSION	
Front	MacPherson type with aluminium lower arm & anti-roll bar
Rear	Programmed deflection flexible beam with coil springs
PERFORMANCE	
0-100kph (secs)	8.7
Maximum speed (kph)	201
FUEL CONSUMPTION (l/100km)	
CO ₂ emissions (g/km)	165
Urban (cold)	9.1
Extra-urban	5.7
Combined	7.0
FUEL TYPE	Unleaded

COLOURS



Malta Blue

Note: Printing limitations do not permit the subtle paint shades to be shown with complete accuracy.

STANDARD TRIM LEVEL FEATURES

SAFETY AND SECURITY

- Airbags - front driver and passenger
- Front lateral airbags
- Curtain airbags
- Airbag - front passenger switch
- ABS - Bosch 8.1 (Anti lock-braking system)
- ESP with disconnection function
- Deadlocking
- Driver's seatbelt warning
- Electronic immobiliser
- Front fog lights
- Emergency spare wheel
- Integrated passive anti-submerging system
- Headrests - front height adjustable
- Remote central locking
- Thatcham category 1 alarm
- Three point Isofix mounting on passenger seat

COMFORT, DRIVING AND VERSATILITY

- Renault Sport chassis
 - Wider track than Dynamique (+60mm front, +69mm rear)
 - Lower ride height (-10mm vs Dynamique)
 - Stiffer springs and dampers than Dynamique
- Extended sills
- Extended wheel arches
- Gear change warning light
- Seats - driver's height adjustable
- Steering wheel - height adjustable
- Intelligent rear windscreen wiper
- Specifically calibrated sports power steering
- Time delay interior courtesy lighting
- Windows - electric front
- Electrically operated door mirrors
- Cruise control and speed limiter
- Black headlight surround
- Brushed aluminium pedals
- Climate control
- Seats - rear seats independent sliding and folding
- Headrests - two rear
- Extra tinted glass in rear windows and tailgate

TWINGO GORDINI RENAULT SPORT STANDARD EQUIPMENT (Additional standard equipment to core features above)

- Gordini leather
 - Dark grey leather faced front seats with blue details and embossed Gordini logo
 - Dark grey leather faced rear seats
- 17" 'Gordini' alloy wheels with polished face and black inserts
- Gordini racing stripes (with Gordini "G" holograms)
- Gordini detailed gearknob and gearknob surround
- Gordini leather steering wheel with racing stripes
- Exclusive identification numbered plate
- Metallic paint - Malta Blue
- 4 x 20W RDS radio with single CD MP3 player with RCA input and Bluetooth®
- White GT rear spoiler
- Gordini Series badging
- Gordini rev counter
- Gloss black centre console
- Gloss black front and rear bumpers
- White door mirrors
- White front fog light surrounds
- Gordini carpet mats

CLIO GORDINI RENAULT SPORT



The Clio Gordini Renault Sport showcases the ultimate specification for this car, with its supportive quilted leather seats, plus the distinctive Gordini motif wherever you look, from the steering wheel to the blue gearknob and rev counter. Clio Gordini Renault Sport delivers genuine driving enjoyment in total safety. Its set-up offers precise sports handling and ESP is standard to enable the driver to stay in control in situations where grip is lost. This disconnectable function and the absence of emergency brake assist underpin Clio Gordini's sporty credentials, while its electric power steering has been calibrated to ensure precise, instantaneous response to the driver's instructions via the steering wheel.

So, go your own way. With Clio Gordini Renault Sport, you're not just celebrating the history of a famous marque, you're recreating it for tomorrow.



TECHNICAL SPECIFICATIONS

ENGINE	2.0 VVT
Induction capacity (cc)	1 998
Bore x stroke (mm)	82.7 x 93.0
Compression Ratio	11.5 : 1
Maximum power (kW)@rpm	147.5 @ 7 100
Maximum torque (Nm)@rpm	215 @ 5 400
WEIGHT (kg)	
Licensing mass	1 690
TRANSMISSION	
Number of forward gears	6
STEERING	Variable power assisted
Turning circle (kerb to kerb)	11.4(m)
TYRES	
Rim size	17"
Tyre size	215/45 R17
CAPACITIES	
Fuel tank (l)	55
Luggage capacity (cm ³)	288
SUSPENSION	
Front	Double axis strut system
Rear	Torsion beam system with programmed deflection-coil springs
PERFORMANCE	
0-100kph (secs)	6.9
Maximum speed (kph)	225
FUEL CONSUMPTION (l/100km)	
CO ² emissions (g/km)	195
Urban (cold)	11.3
Extra-urban	6.4
Combined	8.2
FUEL TYPE	Unleaded

COLOURS



Malta Blue

Note: Printing limitations do not permit the subtle paint shades to be shown with complete accuracy.

STANDARD TRIM LEVEL FEATURES

SAFETY AND SECURITY

- Driver and passenger airbags
- Front side airbags
- Curtain airbags
- Anti submarining airbags (front)
- ABS
- EBD (Emergency Brakeforce Distribution)
- ESP + ASR - Traction Control
- R.A.I.D (Renault Anti Intrusion Device)
- Auto-locking doors
- Rear head rests
- Height adjustable seatbelts - front
- Isofix mountings
- Centre High Mounted Stop Light (CHMSL)

COMFORT, DRIVING AND VERSATILITY

- Cruise control
- Trip/onboard computer
- Front fog lamps
- Cornering headlamps
- Climate control - full auto
- Power windows front
- Remote central locking
- Single CD player with MP3 reader
- Multimedia connection box
- Bluetooth® preparation
- Fingertip audio controls
- Split folding rear seats
- Power steering
- Height adjustable steering wheel
- Depth adjustable steering wheel
- Electric folding mirrors
- Electric heated mirrors
- Height adjustable driver's seat

CLIO GORDINI RENAULT SPORT STANDARD EQUIPMENT

(Additional standard equipment to core features above)

- CUP Chassis
- 17" Alloy wheels + red Brembo® calipers
- Exclusive Malta Blue metallic paint with Gordini stripes
- Colour coded bumpers with white F1 front splitter & gloss black rear diffuser
- White rearview mirrors
- Rear spoiler
- Aluminium door handles
- Gordini Leather steering wheel & gear knob
- Leather Gordini Sports type seats
- Extra tinted windows
- Renault Sports display
- Renault hands-free key card



Gordini leather steering wheel with racing stripes.



Dark grey leather faced front seats with blue details and embossed Gordini logo.



Blue trim detailing to front door inserts.



Gordini detailed gearknob and gearknob surround.



Gordini Series badging.



Exclusive identification numbered plate.



Gordini carpet mats.



17" 'Gordini' alloy wheels with polished face and black inserts.

A POWERFUL STANCE



CLIO RENAULT SPORT

THE PRECISE, EFFICIENT, HIGH-PERFORMANCE HOT HATCH

Clio Renault Sport benefits from all the ingredients that have helped forge the success of previous Renault Sport models, including the 'Sport' chassis, a high performance engine and specific brakes. The combination of the independent steering axis front suspension arrangement and reinforced rear suspension provides rigorous, balanced, sporty handling. The Renault Sport Technologies developed 2.0 16V 147.5kW engine brings out the very best in Clio Renault Sport's potential, while the Brembo® calipers and big brake discs deliver powerful, durable stopping power.



Renault Clio's original hallmark looks have been revised, and place the accent on more athletic curves. The wings are wider and the more aggressive front-end incorporates a generously sized, low-positioned air intake. The sills, extractors and wider front and rear wings all highlight the sporty calling. Clio Renault Sport sits squarely on the road thanks to its wide tyres mounted on 17" aluminium alloy rims. Renault Sport badging is visible on the tailgate, on the satin-finish chrome inserts of the side protective mouldings, and under the bonnet on the intake manifold, highlighting this exclusive package.



PERFORMANCE GENETICS COME STANDARD

Clio Renault Sport's sporty credentials are visible both inside and outside the car. Its exterior styling includes new aerodynamic features, which take their inspiration from the world of Formula 1, while the Sport chassis strikes the best possible balance between improved performance & comfort.



AERODYNAMICS DERIVED FROM FORMULA 1 TECHNOLOGY

Clio Renault Sport's aerodynamics takes inspiration from Formula 1 technology that incorporates a front splitter, front-wing air extractors and a rear air diffuser that uses the air that passes underneath the car to keep it glued to the road. The extractors visible on the front wings contribute to the car's aerodynamic performance by neutralising the turbulence produced by the wider wings.

A SPORTY, CHIC INTERIOR

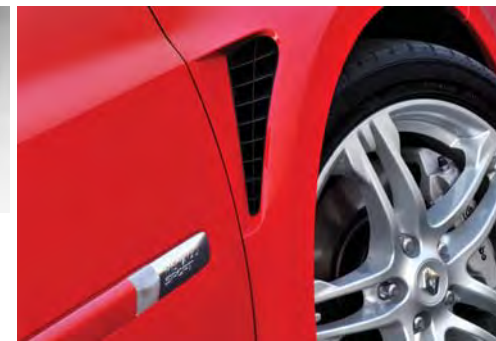
Clio Renault Sport's sporty calling is mirrored in details such as the aluminium pedal covers and footrest, as well as by the perforated leather steering wheel with visible stitching and yellow centre-point marker. The specific Renault Sport seats are exceptionally comfortable and ensure a high level of body-hugging lateral support. The yellow rev-counter includes a visible gearshift indicator to help optimise gear changes. As with all models developed by Renault Sport Technologies, Renault Sport badging is visible inside the cabin on the rev-counter background, door sills, front seats and the gloss carbon strip between the dashboard and glove compartment.



The 2 litre engine was developed jointly by Renault Sport Technologies and Renault's powertrain Engineering Department.



The only car in its class to feature a rear diffuser derived from Formula 1 aerodynamics. Twin exhausts are integrated into the diffuser.



The extractor vents behind the front wheels reduce turbulence and enhance the car's aerodynamics and drag coefficient.



Powerful double Brembo® brake calipers with ventilated front disc brakes.



Drilled aluminium sport pedals enhance the fine detailing within the cockpit.



Renault Sport aluminium door sills.



17" Renault Sport alloy wheels with low profile tyres.



Carminat TomTom® navigation system available as an option.

TECHNICAL SPECIFICATIONS

ENGINE	2.0 VVT
Induction capacity (cc)	1 998
Bore x stroke (mm)	82.7 x 93.0
Compression Ratio	11.5 : 1
Maximum power (kW@rpm)	147.5 @ 7 100
Maximum torque (Nm@rpm)	215 @ 5 400
WEIGHT (kg)	
Licensing mass	1 690
TRANSMISSION	
Number of forward gears	6
STEERING	Variable power assisted
Turning circle (kerb to kerb)	11.4(m)
TYRES	
Rim size	17"
Tyre size	215/45 R17
CAPACITIES	
Fuel tank (l)	55
Luggage capacity (cm3)	288
SUSPENSION	
Front	Double axis strut system
Rear	Torsion beam system with programmed deflection-coil springs
PERFORMANCE	
0-100kph (secs)	6.9
Maximum speed (kph)	225
FUEL CONSUMPTION (l/100km)	
CO ² emissions (g/km)	195
Urban (cold)	11.3
Extra-urban	6.4
Combined	8.2
FUEL TYPE	Unleaded

COLOURS

White 369 Non-metallic Supergloss	Toro Red NNF Non-metallic Supergloss	Deep Black GNA Metallic
Makaha Grey F60 Metallic	Racing Blue J45 Non-metallic Supergloss	Monako Blue RNC Metallic

Note: Printing limitations do not permit the subtle paint shades to be shown with complete accuracy.

STANDARD TRIM LEVEL FEATURES

SAFETY

- Driver and front passenger airbags
- Front side airbags
- Curtain airbags
- Anti-submerging airbags
- ABS with EBD (Electronic Brake Distribution)
- ESP with traction control
- R.A.I.D. (Renault Anti Intruder Device)
- Auto locking doors (motion)
- Height adjustable 3-point front seatbelts with integrated pretensioners and load limiters
- Three 3-point rear seatbelts with integrated pretensioners & load limiters on outer rear seats
- Front and rear headrests
- Isofix child seat mounting points
- Centre high mounted stop light

DRIVING, COMFORT & CONVENIENCE

- Climate control - full auto
- Cruise control
- Multi-function trip computer
- Front fog lamps
- Automatic light & rain sensors
- Cornering headlamps
- Front electric windows with "one-touch" anti pinch control
- Renault hands free-key card
- Remote central locking
- Radio/MP3-CD compatible CD Player with 4 speakers, 2 tweeters and fingertip controls
- Multimedia connection box
- Bluetooth®
- Split folding rear seat
- Variable assisted power steering
- Height and reach adjustable leather steering wheel with stitched yellow centre band
- Black electric heated folding door mirrors with driver's blind spot eliminating mirror
- Height adjustable driver's seat

AESTHETICS

- Renault Sport extended front wings with integrated side air extractors, extended rear wings and body sills
- 17" Renault Sport alloy wheels
- Rear diffuser with twin exhausts
- Rear roof spoiler
- Body coloured bumpers
- Aluminium door handles
- Black rearview mirrors
- Leather steering wheel
- Leather gear knob
- Renault Sport seats with Renault Sport upholstery
- Extra tinted windows

OPTIONS

- Full leather trim
- Carminat TomTom® satellite navigation system
- Electric panoramic sunroof

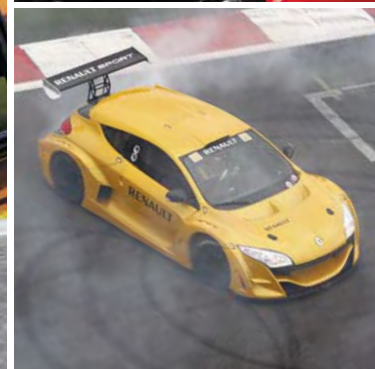
DIMENSIONS (mm)

		A	2585mm	M1	1412mm
		B	4017mm	N	1382mm
		C	826mm	N1	1362mm
		D	606mm	P1	907mm
		E	1520mm	P2	861mm
		F	1520mm	Y	848mm
		G	2025mm	Y1	894mm
		H	1484mm	Y2	1028mm
		H1	1994mm	Z	652mm
		J	678mm	Z1	1306mm
		K	120mm	Z2	675mm
		L	1677mm	Z3	541mm
		M	1402mm		

RENAULT SPORT



RENAULT SPORT.
THE PURE SENSATIONS
OF A TECHNOLOGY
INSPIRED BY
COMPETITION.



MÉGANE 1.4TCe GT-LINE

(Turbo Control efficiency)



THE NEW SPORTS CODE

With the GT-Line, the Renault Mégane opens the way to sporty thrills for passionate drivers. The GT-Line combines a sports-style chassis with exclusive exterior and interior design features: redesigned front bumper, Dark Metal rear diffuser, tinted Dark Metal 17" aluminium alloys, black headlight masks, sport seats, aluminium pedal unit, etc.

The Renault Mégane GT-Line is available in both the stylish four door hatch and the racy Coupé to define your individual style.



DRIVING THRILLS EVERY DAY



Some personalities make your heart beat faster, Renault Mégane GT-Line is one of those. The chrome and gloss black details underline the sporty character of its dynamic silhouette. Its profiled front lamps with LED technology offer an immediately recognizable graphic signature. It integrates the highly technical rear lights, with their innovative positioning making them look suspended.

The GT-Line comes with the 1.4 Tce (Turbo Control efficiency) engine. It is an advanced petrol engine that illustrates Renault's experience in downsized engines.

Despite having the power of a comparable 1.8 litre engine and the torque of a 2.0 litre, its CO₂ emissions are less than those of a 1.6 litre model. Boasting exceptional responsiveness and the smooth availability of torque, the Tce engine offers vivid acceleration at minimum engine speeds, designed for a driving experience that is rich in sensations.

The Renault Mégane GT-Line, the ultimate mix of essential technology combined with distinctive style.



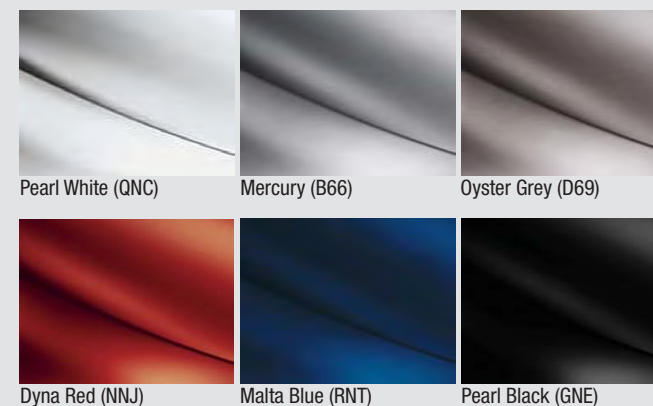
TECHNICAL SPECIFICATIONS

	GT-LINE HATCH	GT-LINE COUPÉ
ENGINE	1.4TCe, 4 cylinder Turbo	1.4TCe, 4 cylinder Turbo
Fuel injection type	Multipoint sequential with Turbo	Multipoint sequential with Turbo
Number of cylinders / valves	4 in-line / 16	4 in-line / 16
Displacement (cc)	1 397	1 397
Power (kW@rpm)	96 at 5 500	96 at 5 500
Torque (Nm@rpm)	190 at 2 250	190 at 2 250
Fuel requirement	Unleaded Petrol	Unleaded Petrol
SEATING		
Number of seats	5	5
WEIGHT & VOLUMES		
Maximum load volume (litres)	1 162	1 024
Minimum load volume (litres)	372	344
GTW - Gross train weight (kg)	3 081	3 072
GVW - Gross vehicle weight (kg)	1 787	1 772
Kerb weight excluding driver (kg)	1 205	1 205
Maximum payload including driver (kg)	635	635
TRANSMISSION		
Number of forward gears	6-speed manual	6-speed manual
STEERING		
Power assisted - electric	Standard	Standard
WHEELS & TYRES		
Wheels size	6.5 J17	6.5 J17
Wheels type	Alloy	Alloy
Tyres	205/55/ R17	205/55/ R17
Spare wheel (full)	17"	17"
CAPACITIES		
Fuel tank (l)	60	60
Luggage capacity (cm ³)	372/1 162	344/1 024
SUSPENSION		
Front:	Pseudo Mac-Pherson	Pseudo Mac-Pherson
Rear:	Flexible beam	Flexible beam
BRAKES		
Bosch 8.0 system Anti-lock Brakes	Standard	Standard
EBD (Electronic Brakeforce Distribution)	Standard	Standard
Emergency Brake Assist (EBA)	Standard	Standard
Front:	280mm Ventilated discs	280mm Ventilated discs
Rear:	260mm Solid discs	260mm Solid discs
PERFORMANCE		
Acceleration: 0 - 100 km/h (secs)	9.6	9.6
Maximum speed (km/h)	200	200
AERODYNAMICS		
Drag coefficient/Area (Cd/A)	2.16/0.31	2.16/0.31
FUEL CONSUMPTION		
Urban cycle (litres /100 km)	8.4	8.4
Extra-urban cycle (litres /100 km)	5.1	5.1
Combined cycle (litres /100 km)	6.3	6.3
CO ² emissions (g/km)	145	145
WARRANTY / SERVICE / MAINTENANCE		
5 Year / 150 000 km mechanical warranty	Standard	Standard
6 Year anti-corrosion warranty	Standard	Standard
5 Year / 100 000 km service plan	Standard	Standard

STANDARD TRIM LEVEL FEATURES

	GT-LINE HATCH	GT-LINE COUPE	GT-LINE HATCH	GT-LINE COUPE
DESIGN - EXTERIOR FEATURES				
Halogen DRL (Daytime Running Lights) in front lamps	•	•		
LED DRL in the front bumper	•	•		
Front fog lamps	•	•		
Electrically adjustable heated, electric folding door mirrors	•	•		
Sunroof-electric panoramic with sunblind & autoclosure	0	–		
Fixed sunroof	–	0		
Tinted windows	•	•		
Metallic paint	0	0		
17" Alloy wheels	•	•		
DESIGN - INTERIOR FEATURES				
Electric front windows (driver's one touch)	•	•		
Dark grey leather/fabric upholstery with red detailing	•	•		
Height adjustable headrests	•	•		
Height adjustable passenger seat	•	•		
60/40 split folding rear seats	•	•		
Leather steering wheel	•	•		
Smoker pack	•	•		
SAFETY				
Driver & passenger airbag			•	•
Side airbags			•	•
Curtain airbags			•	•
Anti-submarining airbags			–	•
Isofix mountings			•	•
ABS + EBA (Emergency Brake Assist)			•	•
EBD (Emergency Brakeforce Distribution)			•	•
ESP with ASR (Anti-Skid Regulation)			•	•
R.A.I.D (Renault Anti Intrusion Device)			•	•
Deadlocking			•	•
Auto locking doors (motion)			•	•
Emergency spare wheel			•	•
SMART TECHNOLOGY FOR CONVENIENCE				
Renault key card			•	•
Cruise control with speed limiter			•	•
Dual-zone climate control with air quality sensor			•	•
Automatic lights and wipers			•	•
Carminat TomTom® Navigation with LIVE services			•	•
Arkamys® 3D Sound 4x15W RDS Radio CD MP3 with Bluetooth®, USB, iPod connection			•	•
Rear parking sensors			•	•
Visio system			0	0
Rear parking camera with distance control			0	0
			Standard • Not Available – Optional o	

COLOURS



Note: Printing limitations do not permit the subtle paint shades to be shown with complete accuracy.

DIMENSIONS (mm)

	A	2640mm	M1	1400mm
	B	4295mm	N	1420mm
	C	862mm	N1	1266mm
	D	792mm	P	873mm
	E	1546mm	Q	832mm
	F	1547mm	Y	980mm
	G	2037mm	Y1	760mm
	H	1423mm	Y2	1152mm
	H1	2000mm	Z	463mm
	J	804mm	Z1	1550mm
	K	120mm	Z2	510mm
	L	1702mm	Z3	854mm
	M	1480mm		

MÉGANE **RENAULT SPORT**

MÉGANE RENAULT SPORT - **HOT HATCH OF THE YEAR 2011**
CAR MAGAZINE
MÉGANE RENAULT SPORT - **2012 BEST BUYS - HOT HATCH**
TOPCAR MAGAZINE

MÉGANE RS
265HP
360 Nm
0 to 100kph standing start:
6 seconds



UNLEASH **THE FURY**

265hp says it all. To get such a performance from the Mégane Renault Sport 2.0 litre turbo engine, our engineers made the most of the experience gained by Renault Sport on circuits all over the world. The result was 265hp, for a torque of 360Nm, available on a wide range of engine speeds, and a weight / power ratio of 5.4 kg/hp, synonymous with high responsiveness. The gearbox has six speeds, driven by a reduced travel control, giving maximum driving pleasure. The performance doesn't disappoint: 0 to 100 km/h in 6.0 seconds and a top speed of 250kph. Performance which is at the top of the category, combined with optimised fuel economy.



The Mégane Renault Sport 265 Trophy has "shortened" the Nordschleife with an incredible lap time of 8'08" and has seen the Mégane Renault Sport 265 Trophy establish a new benchmark time for a production specification front wheel drive car at the Nurburgring's infamous Nordschleife. This performance beats the attempts of several more powerful, rear-wheel drive cars. This achievement provides further evidence of the technological excellence that goes into the design and production of Renault Sport Models.



PASSION

AN UNRIVALLED FUSION OF **STYLE,**
PERFORMANCE AND HANDLING



SPORTY AND ELEGANT DESIGN WHICH BENEFITS PERFORMANCE

The Mégane Renault Sport is not just an engineering masterpiece, but is also superbly designed.

The powerfully evocative exterior style of the Mégane Renault Sport is the expression of its high level of performance and technology. Its front side is impressive, with its widened wings, its front bumper equipped with an aerodynamic strip inspired by Formula 1 and its LED technology headlamps. Seen from the rear, Mégane RS looks like it's ready to pounce, with its muscular shoulders, its vent and its chrome exhaust. Just as expressive are the 18" or 19" aluminium wheel rims, which have a real sporty chic feel. Renault Sport style.



RELEASE

THE SENSATIONS

WHAT IF PLEASURE BECAME THE NUMBER ONE PRIORITY? The pleasure of driving a real sports car, glued to the road, extremely responsive...

The Mégane RS makes these sensations available to all drivers. Its precise, high-performance is still accessible, offering daily thrills in complete safety. With its lowered seat and widened tracks, the Mégane RS SPORT chassis combines comfort and performance. It gives exceptional road holding and optimal traction. The ESP can be disconnected, for an unassisted, more dynamic and direct drive. Thanks to its impressive Brembo® brakes (340mm disks), the Mégane RS brakes with the same energy with which it accelerates.

For even more sportiness, the Mégane RS is also available in a CUP version. It features a CUP chassis which is lowered by 10mm, and combined with the HLSD limited slip differential, and is ideal for the circuit. And so that you can follow developments in several parameters as they happen, the RS Monitor system can display information on mechanical behaviour (power, torque, lateral and longitudinal Gs etc.) and performance (stopwatch, 0 to 100 kph etc.). Equipment taken straight from competition driving, a first for a sports car in this category.



Features and images may vary and be optional depending on model, and are subject to change without notice.

CHOOSE THE BEST

Why should you have to choose between sport and comfort? The Mégane RS interior brings together these two essential components of motoring pleasure. Without hiding any of its sports genes, the Mégane RS offers a high level of comfort, making it perfectly adapted to daily use. The style, quality and ergonomics of its cabin have the prestigious Renault Sport signature, whose emblem adorns the seat backs. These offer exceptional support, something particularly appreciated in sports driving. The Mégane RS is available in two versions, the RS SPORT and the RS CUP for a choice between a more refined style or an extreme driving experience.

To improve performance even more, leather Recaro® bucket seats are offered on the RS CUP. The full grain leather steering wheel has a "zero point" reference, giving a competition feel. The rev counter is designed to be read immediately, enabling the drivers to keep on concentrating on the route ahead, whilst the speed is displayed on an analogue dial. Finally, as is to be expected in an authentic sports coupé, there is an aluminium footrest next to the pedal unit, also made of aluminium. In two words: competition style.



1. AERODYNAMIC FRONT SPLITTER

The expression of high level of performance and technology; the front bumper is equipped with an aerodynamic splitter inspired by F1.

2. ALLOY RIMS & BREMBO® BRAKES

18" Alloys on the RS SPORT, 19" on the RS CUP version, double Brembo® brake calipers with ventilated front disc brakes.

3. LED LIGHTS

Renault Sport daytime running LED technology lamps integrated into the front splitter. Standard on both the RS SPORT and RS CUP.

4. FRONT DOOR MIRRORS

Electric adjustable wing mirrors.



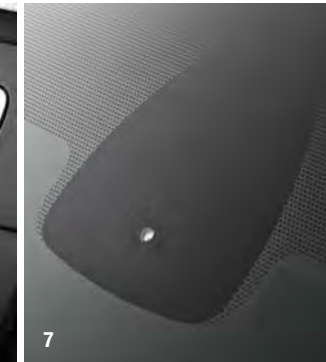
5. GARMINAT TOMTOM® (Sport version)

Navigation system programmed with South African maps. 2D colour navigation with 7" screen and central console control.

TomTom® Home application allows for the management and access to online services, map downloads, points of interest, online commands, access to the Mapshare community, etc.

BLUETOOTH® DVD (Sport version)

Managed from the central multimedia control panel, the 2D navigation features a seven-inch colour display.



6. RADIO CD MP3 (Version dependant)

Connect your digital MP3 player using the USB and iPod ports and control the system using the commands on the steering wheel. This radio is also compatible with the Bluetooth® system.

7. AUTOMATIC LIGHT AND RAIN SENSORS

The front windscreen wipers are activated and adjust their wiping speed depending on how heavily it is raining. A light sensor activates the headlights at dusk or when you enter a parking garage.

8. CRUISE CONTROL / SPEED LIMITER

Allows you to set cruising speed or a maximum speed with steering wheel controls.



9. RENAULT HANDS-FREE KEY CARD

For keyless starting by remote control and locking/unlocking of the doors and boot. To fire up the engine insert the card and press the 'Start/Stop' button.

10. INSTRUMENT PANEL

Designed with three reading levels it allows you to read information faster and more accurately. The rev counter is designed to be read immediately, enabling the drivers to keep on concentrating on the route ahead, and has a specific yellow background, whilst the speed is displayed on an analogue dial.

Features and images may vary and are subject to change without notice.



11. INTERIOR

The interior is dominated by high quality materials with leather Renault Sport seats. (Recaro® leather seats on Cup version)

12. ALUMINIUM SPORTS PEDALS

Drilled aluminium sport pedals enhance the fine detailing within the cockpit.

13. RENAULT SPORT DOOR SILLS

Renault Sport aluminium door sills.

14. AERODYNAMIC REAR DIFFUSER

Rear diffuser derived from Formula 1 aerodynamics with an integrated chrome exhaust outlet.

MÉGANE RS SPORT

RS SPORT

SPORT chassis
 Carminat TomTom® navigation system
 Brembo® brake calipers
 18" Alloy wheels
 Renault Sport leather seats
 Renault hands-free key card
 Radio CD/MP3 player with Bluetooth®, USB, iPod connection
 Dual-zone air conditioning with air quality sensor



Mégane RS SPORT offers Carminat TomTom®, the first truly accessible built-in navigation system. Planning the best route, real-time traffic information, speed-trap warnings, all information displayed in a user-friendly manner on a large colour screen. Its central control provides intuitive, safe access to the various functions.



The optional panoramic sunroof provides the passenger cabin with maximum clarity and offers a panoramic view of the exterior environment.

LIMITED SLIP DIFFERENTIAL

The standard Mégane RS SPORT is equipped with an electronic differential (Extended Brake Lock Differential) which prevents traction losses by braking the wheel which has the least traction during sharp acceleration on a curve or straight.

For even more efficiency, the mechanical differential opposite (Limited Slip Differential) distributes the power between the two wheels enabling the transfer of as much power as possible (available on the RS CUP version).

A feature taken straight from competition driving, this technique optimises traction whatever the road-holding conditions, types of road or driving.

MÉGANE RS CUP VERSION

RS CUP

CUP chassis
 Limited slip differential
 Brembo® Red brake calipers
 19" Alloy wheels
 Recaro® leather bucket seats
 Renault hands-free key card
 Renault Sports monitor
 Dual-zone air conditioning with air quality sensor



36 > 37



RENAULT SPORTS MONITOR

Digital gauge: gives the driver the vehicle's essential readings: oil temperature, pressure of braking system, instantaneous power, instantaneous torque, turbo pressure. Telemetric data readout used in competition, indicates lateral and transversal accelerations expressed in Gs.

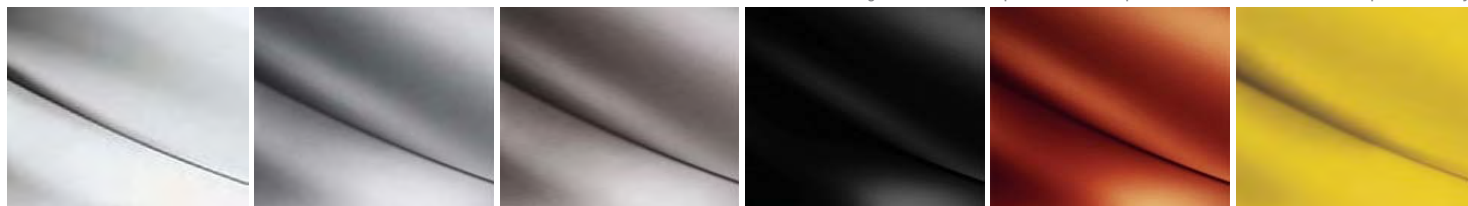


Features and images may vary and be optional depending on model, and are subject to change without notice.

TECHNICAL SPECIFICATIONS

	MEGANE RS SPORT	MEGANE RS CUP
ENGINE	2.0 16-valve, 4 cylinder Turbo	2.0 16-valve, 4 cylinder Turbo
Induction capacity (cc)	1 998	1 998
Bore x stroke (mm)	82.7 x 93.0	82.7 x 93.0
Compression Ratio	8.5 : 1	8.5 : 1
Maximum power (kW@rpm)	195 @ 5 500	195 @ 5 500
Maximum torque (Nm@rpm)	360 @ 3 800	360 @ 3 800
WEIGHT (kg)		
Licensing mass	1 345	1 345
TRANSMISSION		
Number of forward gears	6	6
Anti-skid (ASR)	Yes	Yes
Limited slip differential	No	Yes
STEERING		
Assistance	Electric	Electric
Turning circle (kerb to kerb)	11.35(m)	11.35(m)
TYRES		
Rim size	18"	19"
Tyre size	225/40 R18	235/35 R19
CAPACITIES		
Fuel tank (l)	60	60
Luggage capacity (cm3)	344	344
SUSPENSION		
Front	Pseudo McPhearson	Pseudo McPhearson
Rear	H-shape axle	H-shape axle
PERFORMANCE		
0-100kph (secs)	6.0	6.0
Maximum speed (kph)	250	250
FUEL CONSUMPTION (l/100km)		
CO ² emissions (g/km)	190	190
Urban (cold)	11.3	11.3
Extra-urban	6.5	6.5
Combined	8.2	8.2
WARRANTY / SERVICE / MAINTENANCE		
5 Year / 150 000 km mechanical warranty	Standard	Standard
6 Year anti-corrosion warranty	Standard	Standard
5 Year / 100 000 km service plan	Standard	Standard

COLOURS



Pearl White (QNC)

Mercury (D69)

Oyster Grey (KNG)

Pearl Black (676)

Rouevif Red (727)

Sirius Yellow (ENV) - CUP only

Note: Printing limitations do not permit the subtle paint shades to be shown with complete accuracy.

STANDARD TRIM LEVEL FEATURES

	RS SPORT	RS CUP	RS SPORT	RS CUP
ACTIVE AND PASSIVE SAFETY				
ESP + ASR + CSV + ABS	•	•		
Driver and passenger self-adaptive airbags	•	•		
Manual unlocking of front passenger airbag	•	•		
Side airbags	•	•		
Curtain airbags	•	•		
Anti-submerging airbags	•	–		
Isofix on front and rear side passenger seats	•	•		
Adjustable front head rests (except Recaro®)	•	–		
Renault hands-free key card	•	•		
Coded electric immobiliser system	•	•		
CHASSIS - MECHANICAL - EXTERIOR DESIGN				
Renault Sport Chassis (basic chassis)	•	–		
Renault Sport CUP Chassis	–	•		
Front double-axis strut system	•	•		
Front and rear widened wings	•	•		
F1 type rear vent	•	•		
F1 type front aerodynamic strip	•	•		
CUP chassis + limited slip differential	–	•		
RS Dynamic Management (multi-mode ESP)	•	•		
Brembo® 4 piston front brake calipers	•	•		
Brembo® Red 4 piston front brake calipers	–	•		
Sport rear spoiler	•	•		
Metallic paint	0	0		
Extra tinted windows (rear windows/quarter panel/rear screen)	0	0		
DRIVING				
Electric power steering	•	•		
Specific Renault Sport counter with tachometer and analogue rev counter	•	•		
Manual parking brake	•	•		
Renault remote key card with central locking of doors, boot and fuel flap	•	•		
Tilt + height-adjustable steering wheel	•	•		
SEATS - STORAGE AREAS				
Leather sport seats	•	–		
Leather Recaro® bucket seats	–	•		
Armrest centre console in leather shell with manual parking brake in leather shell	•	•		
1/3-2/3 splitfold rear seat	•	•		
RADIO - NAVIGATION - TELEPHONE - MULTIMEDIA				
Radio CD/MP3 player with Bluetooth®, USB, iPod connection	•	•		
Carminat TomTom® Navigation with LIVE services	•	–		
Renault Sports Monitor	–	•		
VISIBILITY - LIGHTING				
LED DRL (Day-time Running Lights)	•	•		
Halogen bulb headlights	•	•		
Bi-Xenon directional headlights	0	0		
Follow-me-home headlights	•	•		
Boot light	•	•		
Front floor and footwell lighting	•	•		
COMFORT				
Rear parking aid	•	•		
Front and rear parking aid	0	0		
Cruise control and speed limiter	•	•		
Dual-zone air conditioning with air quality sensor	•	•		
Rain and light sensors	•	•		
Electrochrome rearview mirror	•	•		
One-touch windows with anti-trap feature for driver & passenger	•	•		
Fixed glass roof	0	0		
Moveable ashtray + cigarette lighter	0	•		
WHEELS				
18" Sport Tibor aluminium wheel rims	•	–		
19" Sport Contact aluminium wheel rims	0	•		
VARIOUS - INTERIOR DESIGN				
Full grain leather steering wheel with 0-point and leather lined gear knob with yellow Renault Sport top stitching	•	•		
Carbon look with gloss black dashboard moulding	•	•		
Aluminium Renault Sport pedal unit and footrest	•	•		
Renault Sport side sill	•	•		
	Standard •	Not Available –	Optional o	
DIMENSIONS (mm)				
	A	2636mm	M1	1400mm
	B	4299mm	N	1420mm
	C	860mm	N1	1266mm
	D	803mm	P	873mm
	E	1588mm	Q	832mm
	F	1545mm	Y	980mm
	G	2037mm	Y1	760mm
	H	1435mm	Y2	1152mm
	H1	1990mm	Z	463mm
	J	830mm	Z1	1550mm
	K	120mm	Z2	510mm
	L	1702mm	Z3	854mm
	M	1480mm		

CUSTOMISE

THE EXPERIENCE

ACCESSORIES FOR A TOUCH OF PERSONAL STYLE

Each driver is unique. The Renault Sport range is already generously crammed with features and equipment fitted as standard, but our range also offers a wide selection of cool and functional accessories.

Whatever your priority, be it aesthetics, practicality, safety or technology, our range of optional accessories are designed to meet your every need.



19" SPEEDLINE BRILLIANT BLACK + DIAMOND EFFECT ALLOYS



18" ALLOYS KEZA COLD METALLIC SILVER & GREY



18" ALLOYS AX-L MATT BLACK & SATIN CHROME



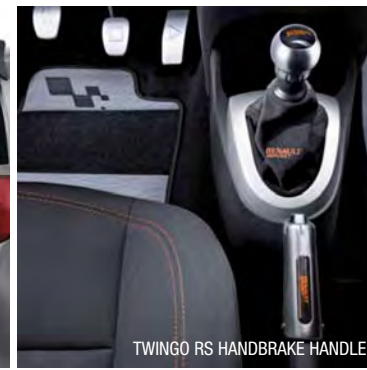
MÉGANE RS DECORATIVE TRIM



40 > 41



RENAULT CLIO RS BOOT SPOILER



TWINGO RS HANDBRAKE HANDLE



MÉGANE RS 19" ALLOYS



TWINGO RS DECORATIVE TRIM



TINTED WINDOW FILM & AIR DEFLECTORS



RENAULT SPORT MATS



CLIO RS STEERING WHEEL & INSERT



TWINGO RS DECORATIVE TRIM



TWINGO RS GEAR LEVER KIT



CLIO RS BUMPER GRILLE



TWINGO RS "POWER PADS" PEDAL COVERS



ALLOY WHEELS

Accessories available for certain models only.

Actual accessories may vary from photographs shown and are subject to change without notice.

OUR COMMITMENT TO SAFETY...
BECAUSE NOTHING WILL EVER BE MORE IMPORTANT TO US THAN YOU



Your safety is our top priority. Anticipating risks, maintaining control in tricky situations, using the best possible technology to protect all passengers and teaching awareness of danger on the road from an early stage... these are the four cornerstones of Renault's safety philosophy. For you... that means guaranteed peace of mind.

The Euro NCAP (European New Car Assessment Programme) provides an independent evaluation of passenger car safety levels in Europe.

Renault is the leader in safety as can be seen from our history. This is achieved through an annual budget of over 100 Million Euros and the efforts of 600 engineers and experts. Renault carries out 400 actual crash tests and 4 000 virtual crash tests every year, giving Renault the highest overall safety scores in the industry with eleven of our vehicles having achieved 5 stars in the Euro NCAP crash tests.

PREVENTION. To help you anticipate any danger on the road, Renault has developed a whole range of intelligent safety features designed to significantly reduce possible risks.

CORRECTION. When emergency situations occur, you need to rely on your Renault to react faster than even you can. That's why our cars have integrated electronic systems which detect and analyse abnormal inputs then take (or help you to take) the appropriate corrective action.

PROTECTION. In the event of an unavoidable impact, the Renault System for Restraint and Protection (SRP) offers a combination of adaptive airbags and active seatbelts to guarantee the best possible protection. The reinforced vehicle body structure is the result of a fine balance between rigidity programmed crumple zones, absorbing energy to reduce the risk of injury for all occupants.



- 1 Lap/seat pretensioners and pelvis load limiters
- 2 Thorax load limiter pretensioner inertia belts
- 3 Thorax side airbags
- 4 Adaptive front airbags
- 5 Curtain airbags
- 6 Seat position sensor
- 7 Energy-absorbing head-restraints
- 8 Reduction of passenger airbags except for the curtain airbag
- 9 Roll-over protection
- 10 Impact sensors and ECU
- 11 Luggage restraint cross-member

RENAULT ADVANCED DRIVER TRAINING

Whether you are 18 or 80, driver training benefits everyone. Attitude is what sets most safe drivers apart from the rest. Whether you're a driver, passenger or pedestrian, there are ways to reduce the risks out on the road by mastering the art of safe driving. Learning to drive with finesse is the essence of being an efficient and safe driver. With the transfer of racing technology to our production cars there is a need and responsibility to equip drivers with the necessary skills to drive and handle these high performance vehicles.

Renault is committed to responsible and safe driving and offers Advanced Driver Training to the drivers of our Renault Sport vehicles, as well as all Renault owners and even the public.

The Renault Advanced Driver Training programme offers a broad and comprehensive range of advanced driver training that includes not only the high performance race track and skid pan courses, but also training that assist in the day-to-day hazards that face drivers on our public roads. Driver training ranges from group sessions to personalised courses and covers Defensive Driving, Advanced Driver Safety, Collision Avoidance and Hijack Prevention to name a few.

You are welcome to start your journey with us and master the art of safe driving.



RENAULT DRIVE THE CHANGE

The philosophy that encapsulates Renault brand values and expresses the ambition of Renault; an innovative, human company, to pioneer sustainable mobility for all. Renault builds on more than 110 years of innovation to bring customers breakthrough top quality products and services that are ingenious, appealing, affordable and carbon efficient.

Renault's brand expresses the deep rooted values of our business culture and brand values - reliable, human, enthusiastic - and forges a new path in automotive design and use.

RENAULT CONFIANCE



RENAULT CONFIANCE AN ALL-ENCOMPASSING CARE PACKAGE.

When you drive a Renault, you drive with confidence because you know that wherever you are, you'll always be in great hands. And to make your travels even more enjoyable, Renault is proud to bring you Renault Confiance - a complete peace of mind programme. Read on and understand why many Renault drivers feel more confident that they're backed by Renault Confiance.

PARTS AVAILABILITY WHATEVER PARTS YOU NEED, WE'LL HAVE THEM OR OFFER YOU A MOBILITY SOLUTION.

Renault ranks amongst South Africa's motor industry leaders in affordable parts pricing. Parts availability is ensured in Renault dealerships, but should your Renault become immobilised through spare parts being unavailable, you will be offered a mobility solution.

5 YEAR/150 000KM WARRANTY* WITH A 5 YEAR/150 000KM WARRANTY, YOU'RE ALWAYS COVERED.

Should you experience any mechanical failure resulting from a defect in an original part(s) on your new Renault vehicle, Renault Confiance will cover the cost of repairs for a period of 5 years or 150 000km.

*Warranty does not cover wear and tear items such as shock absorbers, brake pads, clutches, cam belts, etc.

FIXED PRICE SERVICE MENU KNOW YOUR SERVICE COSTS UPFRONT, WHAT WE QUOTE IS WHAT YOU PAY.

No surprises, just fair, standard pricing on all services. So, you know upfront what you are paying for your vehicle service. The Fixed Price Service Menu is a major advantage for customers. It states the costs of every scheduled service, and is displayed in every dealership. It affords the opportunity to compare our servicing costs with competitors. Transparency is assured, and there are no hidden costs.

24HR ROADSIDE ASSISTANCE/SECURITY WHATEVER THE EMERGENCY, WE'LL ALWAYS BE THERE.

Because your personal security is of utmost importance to us, help is one phone call away. Simply dial **0800 600 189** for assistance or for a team to be dispatched to you.

- This number is available 24 hours a day, 365 days a year.
- You will either be assisted on the scene or your vehicle will be towed to the nearest Renault dealership.
- Our 24 hour Roadside Assistance Plan covers all new Renault vehicles for a period of 5 years or 150 000km with an option for extension.
- With our 'Stand by You' Plan, we will dispatch a security guard within any metropolitan area to stand by your side on request.

SERVICE/MAINTENANCE PLANS WE OFFER STANDARD OR TAILOR-MADE OPTIONS TO SUIT YOUR NEEDS.

SERVICE PLAN

Having a Service Plan reduces the costs of servicing your new car. The price of the Service Plan is fixed when you buy your car, so you won't have to worry about inflationary price increases on labour or parts; for the duration of your Service Plan.

MAINTENANCE PLAN

Your Maintenance Plan is a comprehensive package that not only covers all your service, maintenance and labour costs over a contract period, giving you greater peace of mind.

COMPLETE PEACE OF MIND

At Renault we believe in always putting you first and striving to understand your vehicle and service expectations. In this way we will be better able to meet them, providing you with peace of mind, value for money and a strong sense of satisfaction with your vehicle purchase.

CONTACTS TO REMEMBER

CUSTOMER CARE DIRECT LINE
0861 RENAULT or 0861 736 2858

RENAULT ASSISTANCE
0800 600 189

TOMTOM® CUSTOMER CARE
0800 980 670

RENAULT SA WEBSITE
www.renault.co.za

RENAULT SPORT



www.renault.co.za

MÉGANE RENAULT SPORT

HOT HATCH OF THE YEAR 2011
CAR MAGAZINE

2012 BEST BUYS - HOT HATCH
TOPCAR MAGAZINE

5
YEAR WARRANTY
150 000 KM

Renault Customer Care Direct Line: 0861 RENAULT or 0861 736 2858

Renault South Africa (Pty) Ltd. reserves the right to modify its models without notice, likewise their characteristics, equipment and accessories.

RENAULT
recommends 

