



PHAETON





It's the most Volkswagen you can get without a prescription.

So much for playing it safe.

Here it is. The Phaeton.[™] A luxury car from Volkswagen. (The same company that has defied more than a few conventions these past 56 years.)

Surprised? To us, it's simply the natural order of things.

Our engineers just don't stop. Ceaseless hours with our cars. Under the hood. Behind the dashboard. Inside the engine block. Finding absolutely every opportunity for innovation imaginable. Sooner or later they were going to have to unleash this

enthusiasm on a luxury car.

And unleash they did.

Truth be told, we patented over 300 ideas while developing the Phaeton model.

All our blue-sky thinking has resulted in more than a few innovations. Like an adjustable air-suspension system, which lets you choose between four different shock-absorber settings on the fly. And Climatronic.[™] It can create 4 distinct microclimates between 64° and 82° using no direct ventilation. And the 18-way adjustable

driver's seat with massage, heating, cooling and lumbar support!¹ And 4MOTION[®] permanent all-wheel drive.

What's really innovative, however, is that all these features come standard – especially when you consider many aren't standard on other luxury cars in the Phaeton's price range, or even optional.

Of course, that's precisely the idea.

To challenge the rules and conventions of how cars can be made and for whom they can be made. Some things never change.

¹Standard on the W12. Optional with package on the V8.

Drivers wanted. 

There's a reason simple, classic designs are simple and classic.

Stand back from the Phaeton. What do you see? Anything flashy? Exuberant? Ostentatious? No? Good. That's the idea. The exterior of the Phaeton doesn't shout, or draw too much attention to itself. "What this car inherently exudes is quiet elegance," writes Ruediger Folten of VW's Design Strategy group. Note the balance of chrome. Not too much, not too little. And the front grille's double bars – refined without being showy. Doesn't all of this seem a bit familiar? It should. The Phaeton comes from a history of understated and timeless design. This car couldn't be anything but a Volkswagen.



Automatic Trunk¹

When is a trunk hinge more than just a trunk hinge? Made of forged aluminum alloy, this one takes up a minimum amount of space, and helps open or close the trunk automatically.



Side-view Mirrors

They're power-adjustable, powerfolding, and heatable. And that's just the beginning. The Phaeton's side-view mirrors have a self-dimming feature that helps reduce glare from oncoming headlights. In addition, the passenger side-view mirror tilts downward automatically when the gearshift is placed in reverse to facilitate parallel parking.



18-Inch Alloy Wheels

Made from aluminum alloy, our subdued 7-spoke design offers classic simplicity and provides a strong feeling of motion, even when they're at rest. This design also provides more wheel and less tire, so you get better handling around corners.



More Exterior Features

1. Xenon headlamps with washers
2. Tilt-and-slide power sunroof
3. LED taillights
4. Keyless access²
5. GPS navigation antenna

¹Optional with package on the V8, standard on the W12. ²Optional.

Drivers wanted.® 

Whoa, just look at all the room in here. Room in here.

Okay, so an echo might be a bit of an exaggeration, but not by much. The Phaeton offers even the leggiest travelers ample room to stretch out. Way out. The Phaeton has more rear headroom, shoulder room, and legroom than several of our competitors in the luxury segment. In fact, the closest competitor in the legroom department falls almost 3" short. It's true. Feel free to drop by a select VW dealer and see for yourself. While you're there, note that all of the seating surfaces are covered in leather, standard. You'll find a nice range of wood trims available as well.



Rear Seating

The Phaeton's standard rear bench seat comfortably seats three people. The optional premium rear seat accommodates three people and, like the standard front seats, offers heating and air conditioning, electronically adjustable lumbar support and massage, as well as power height-adjustable headrests for the two outboard positions only. The 10-way power-adjustable rear seats are available as part of the 4-seater package.

Drivers wanted. 

A little to the right. Now down a bit. Right there. Right there.

Consistent with everything else in the car, the Phaeton's seats are way more than seats. To begin with, they're wrapped in leather, with micro-hole perforations to allow indirect heating and cooling ventilation. The lumbar support is 4-way adjustable. And there's massage. Yes, massage. It might not come with a thick European accent, but the Phaeton's optional massage system can do wonders for your spine during those long trips. And our system is mechanical, not inflatable. We found a mechanical system simply does a more thorough and satisfying job. It's the little things, isn't it?



18-way Programmable Seating¹

Underneath the Phaeton's leather seats lies a wide array of electronic adjustment options. 18-way for the driver and 16-way for the front passenger. Once you've got the various upper- and lower-body, lumbar, height, angle, distance and headrest possibilities set, they can be programmed to your Phaeton's key.



Infotainment System

Sure, it's incredibly powerful. Everything from the audio system, to GPS navigation, air-suspension settings, the climate-control system, and the tire pressure monitor is located right at your fingertips. All this technology – and it's as easy to use as an ATM.



Climatronic Climate Control

"Is it hot in here, or is it just me?" It's just you. With the Climatronic climate-control system, passengers can create their very own micro-climates between 64° and 84°. You can even heat or cool the cabin indirectly, via a distribution network of thousands of tiny holes in the dashboard and seats.



Memory Settings

Many of the features in the Phaeton, like the power-seating, steering wheel and rearview mirror positions, and the sound system and Climatronic climate-control preferences can be saved into memory and programmed to a folding remote key ID.

More Interior Features

1. 10-speaker premium stereo with CD player
2. Self-dimming rearview mirror
3. Rear climate controls²
4. Multi-function trip computer
5. Power rear window shade

¹18-way power adjustable driver and 16-way passenger seats are standard on the W12, optional with package on the V8. ²Optional with package on the V8.

Drivers wanted.®



Watch closely as brainpower is turned into horsepower.

Valve timing can be tricky business. Typically, you tune the engine to idle smoothly – which means less power at higher rpm, or you tune for power – possibly causing the engine to shake and sputter while driving. To solve this dilemma, the Phaeton uses Variable Valve Timing, which varies air intake and exhaust timing by as much as 22°. So the Phaeton idles smoothly, then adjusts to provide plenty of mid-range torque. The end result? The V8 ponies up 335 horsepower at 6,500 rpm. And the W12 offers a staggering 420 hp at 6,000 rpm.

“The Phaeton is a visually imposing, exquisitely crafted, gigantically capable car that’s positively heaving with the latest in performance, luxury, and safety!”

– *Automobile*



4MOTION

The way we see it, if you’re going to engineer a car this technologically advanced, it should have all-wheel drive, standard. 4MOTION is completely automatic, constantly measuring traction, then distributing power and braking to help keep your Phaeton under the greatest possible control.

Adjustable Air-Suspension System

We use adjustable air springs, not steel springs, to provide a greater range of comfort and control. Sensors in each wheel housing help the air springs maintain optimal vehicle height. Adjustable shock absorbers let you easily switch between a “Sport” and two “Comfort” settings.

The Phaeton V8

Usually in a car as big as the Phaeton, you’d need a big, heavy engine. But maybe not. Volkswagen’s engineers built the Phaeton’s V8 from aluminum alloy with a 17 percent silicon content. Doing this eliminates the need for steel liners in the cylinder bores, making the engine block lighter. It also helps dissipate heat faster. The cylinder heads are made from die-cast magnesium to save additional weight.



“Reputations aren’t made overnight, but once people drive this car, word will spread. At Autobahn speed, we expect!”

– Roger Hart, *AutoWeek*, July 22, 2002

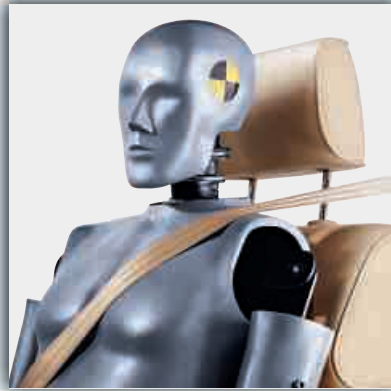
Drivers wanted.® 

This is where our story really begins.

Safety is embedded in almost every aspect of the Phaeton. From the passenger compartment (a.k.a. the frame) – designed to be the stiffest in its class. To 4MOTION permanent all-wheel drive. To the intuitively designed multifunction steering wheel. In essence, the Phaeton's safety features are everywhere, working in both passive and active capacities. They have been designed to help keep you alert, save time and help maintain your focus on the road. We've illustrated a few of the Phaeton's safety features below.

Roadside Assistance¹

The Phaeton also has a 24-hour-a-day Roadside Assistance package, for 4 years, unlimited mileage. Wherever you go, there we are.



Safety Systems

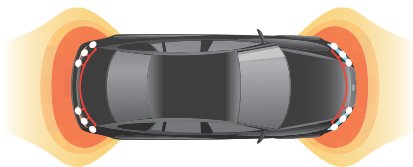
The Phaeton comes standard with dual front, front side, and rear side impact airbags, as well as Side Curtain Protection™ airbags. Side Curtain Protection airbags² deploy from the top frame, rather than the side of the seat, to prevent head trauma in the case of a collision.

Active Head Restraint

Front headrests will fold forward in the event of certain rear-on collisions to help avoid the effect of whiplash. What's more, no additional repair is needed to restore the headrest back to its original position.

Passenger Compartment

The Phaeton's passenger compartment is designed to be one of the stiffest in its class. It's made from layers of high-grade, high-strength steel that are bonded together by laser welding and structural gluing to ensure the rigidity of the body is evenly distributed throughout the entire structure.



Electronic Parking Assistance³

This system uses ultrasonic sensors to detect the distance from the Phaeton to objects, people and other cars. Acoustic signals inside the car intensify as the Phaeton gets closer to nearby objects. Visual displays mounted atop the front dash, in back, and above the rear window use yellow then red lights to indicate the closing of the gap.

More Safety Features

1. Electronic stabilization program
2. Head restraints for all seating positions
3. Direct tire pressure monitoring system
4. Anti-theft vehicle alarm system
5. Trunk escape handle

¹Roadside Assistance is provided by Road America. See dealer for details. ²Airbags are supplemental safety systems. Always use safety belts and seat children only in the rear, using restraint systems appropriate for their size and age. ³Optional on all trim levels.



CUSTOM COLOR COMBINATIONS

	Luna Blue Klavierlack	Nocturne Aubergine Klavierlack	Black Klavierlack	Campanella White	Coucou Gray	Luna Blue	Nocturne Aubergine	Black	Silver Mirror	Bolero Beige	Silver Atmosphere Custom Color	Cairo Gray	Antibes Blue Custom Color	Marais Green Custom Color	Deep Blue Custom Color	Waterworld Custom Color	Luxury Black Heliochrome Custom Color	Apassionata Blue Heliochrome Custom Color	Papillon Silver Heliochrome Custom Color	
Sonnenbeige	•	•	•	•	•	•	•	•	•	•	•	•	•	•	•	•	•	•	•	•
Kristall Gray	•	•	•	•	•	•	•	•	•	•	•	•	•	•	•	•	•	•	•	•
Anthracite	•	•	•	•	•	•	•	•	•	•	•	•	•	•	•	•	•	•	•	•
Petrol ¹	•	•	•	•	•	•	•	•	•	•	•	•	•	•	•	•	•	•	•	•
Navy Blue	•	•	•	•	•	•	•	•	•	•	•	•	•	•	•	•	•	•	•	•

Custom exteriors and interiors require custom manufacturing and are available at an additional cost. Please see your dealer for lead times and ordering details. ¹Delayed introduction.

EXTERIOR Front to back	V8	W12
Xenon headlamps with clear, lightweight, chip-resistant polycarbonate lenses, and independent dual-cycle headlight washer system	S	S
Automatic headlamps with coming/leaving home feature	S	S
Power side exterior mirrors, heatable, self-dimming, power flush-folding, with memory, and passenger tilt function when reversing	S	S
Tilt-and-slide power glass sunroof with tinted glass, power sunshade, preselect, pinch protection, and convenience-closing feature operated by driver's door power lock	S	S
17-inch alloy wheels with anti-theft wheel locks (snow chain compatible)	O	O
18-inch alloy wheels with anti-theft wheel locks	O	S
Full-size spare tire with matching alloy wheel	S	S
Soft-close doors	S	S
Power-opening/closing trunk	OP	S

INTERIOR Aesthetically speaking	V8	W12
190-watt sound system with 10 speakers, 8-channel amplifier, sub woofer, AM/FM, and glove-box-mounted 6-disc CD changer	S	•
270-watt sound system with 12 speakers, 12-channel amplifier, sub woofer, AM/FM, Digital Sound Processing (DSP) with 7 adjustable simulated modes, dynamic sound compression, and glove-box-mounted 6-disc CD changer	O	S
12-way driver and passenger power-adjustable comfort seats with heat, power-adjustable lumbar support, safety belts and head restraints, memory function for front seats, exterior mirrors, interior rearview mirror and steering column	S	•
18-way driver and 16-way passenger power-adjustable comfort seats with massage feature, power-adjustable lumbar support, safety belts and head restraints, memory function for front seats, exterior mirrors, interior rearview mirror and steering column, and ventilated with air conditioning and heat	OP	S
Heatable rear seats	OP	S
Rear seat with massage feature for outboard seating positions and ventilated with air conditioning	•	OP
10-way power-adjustable rear outboard seats with memory, power-adjustable head restraints for all seating positions, and rear control for front passenger seat	OP	OP
Power-adjustable lumbar support for rear outboard seating positions	OP	OP
Leather seating surfaces	S	S
Eucalyptus wood interior trim	S	O
Walnut wood interior trim	O	S
Chestnut wood interior trim	O	O
Myrtle wood interior trim	O	O
Stainless steel accelerator, brake, and emergency brake pedals	S	S
Rear center console in wood with display for rear climate controls	OP	OP

INTERIOR For your convenience	V8	W12
CD-based navigation system with visual and audible commands	S	S
Multifunction trip computer with 5-inch color display integrated into the instrument cluster featuring trip time, distance, average trip speed and fuel consumption, current fuel consumption, and miles to empty	S	S
Infotainment system with 7-inch color display featuring adjustable settings for climate control, navigation, audio, vehicle settings, trip computer, air-suspension settings, and tire pressure monitoring system	S	S
Four-zone Climatronic™ automatic climate-control system	S	S
Front and rear air vents with draft-free ventilation	S	S
Rear climate controls and display for rear passengers	OP	S
Self-dimming rearview mirror with memory function	S	S
4-spoke leather-wrapped multifunction steering wheel with cruise control, audio, and multifunction onboard computer functions	S	S
Heated steering wheel	OP	S
Power height-adjustable telescopic steering column with easy entry/exit function	S	S
Power-operated rear window sunshade	S	S

WARRANTY

BASIC LIMITED WARRANTY: The Phaeton comes with a bumper-to-bumper New Vehicle Limited Warranty for 4 years or 50,000 miles, whichever comes first.

POWERTRAIN LIMITED WARRANTY: The Volkswagen Powertrain Limited Warranty provides 5 years or 60,000 miles of protection, whichever comes first.

ANTI-CORROSION WARRANTY: A fully galvanized steel body means we can offer you a 12-year unlimited mileage Limited Warranty Against Corrosion Perforation.

SAFETY & SECURITY Play it safe	V8	W12
Driver and front passenger airbag supplemental restraint system ¹	S	S
Driver, front passenger and rear outboard passenger side impact airbags ¹	S	S
Side Curtain Protection™ airbags ¹	S	S
3-point safety belts with emergency locking retractors and load limiters at all seating positions	S	S
Safety belt pretensioners for driver, front passenger and rear outboard seating positions	S	S
Head restraints for all seating positions	S	S
Active head restraints for driver and front passenger	S	S
Direct tire pressure monitoring system	S	S
Intelligent crash response system	S	S
Volkswagen Telematics by OnStar®	S	S
Electronic Parking Assistance	O/OP	O

SAFETY & SECURITY Lockdown	V8	W12
Central power locking system with remote transmitter	S	S
Power window lockout on driver's side door	S	S
Anti-theft vehicle alarm system with anti-tow alarm, interior motion sensor for doors, hood, trunk, radio, and starter interrupt	S	S

TECH SPECS Technology & engineering	V8	W12
4.2L, 335 hp, 317 lb-ft torque V8 engine	S	•
6.0L, 420 hp, 406 lb-ft torque W12 engine	•	S
6-speed automatic transmission with Tiptronic®, Dynamic Shift Program (DSP), and sport mode	S	•
5-speed automatic transmission with Tiptronic, Dynamic Shift Program (DSP), and sport mode	•	S
4MOTION® permanent all-wheel drive system	S	S
Servotronic® power steering	S	S
Independent, 4-corner adjustable air suspension with four adjustable damping settings, Electronic Damping Control (EDC), and auto leveling	S	S
ABS (Anti-lock Braking System) 4-wheel vented disc brakes	S	S
Electronic stabilization program	S	S
ASR (Anti-Slip Regulation) traction control	S	S
EDL (Electronic Differential Lock)	S	S
EBC (Engine Braking Control)	S	S
EBD (Electronic Brake Force Distribution)	S	S

MEASUREMENTS Think bigger

Wheelbase	118.1 in
Front Track	64.1 in
Rear Track	63.5 in
Overall Length	203.7 in
Width	74.9 in
Height	57.1 in
Front/Rear Headroom	37.2/38.1 in
Front/Rear Shoulder Room	59.6/57.8 in
Front/Rear Legroom	41.7/43.1 in
Passenger Volume	108 cu ft
Front Volume	53.5 cu ft
Rear Volume	54.9 cu ft
Cargo Volume	13.0 cu ft

OPTIONAL PACKAGES Extras	V8	W12
Comfort and Cold Weather Package	O	•
4-Seater Package	O	O
Technology Package	O	•
Comfort Package	•	O

KEY:	S	O	OP	•
	Standard	Optional	Available with package	Unavailable

Please see the official 2005 Phaeton showroom brochure at participating Volkswagen dealers for further technical information, photos and other details. ¹Airbags are supplemental restraints only and will not deploy under all accident scenarios. Always use safety belts and seat children only in the rear, using restraint systems appropriate for their size and age.





Just because the Phaeton is a luxury car doesn't mean we have the luxury of dropping the legal jargon. So, here we go. Volkswagen of America, Inc. believes the information and specifications in this brochure to be correct at the time of printing. Specifications, standard features, options, fabrics and colors are subject to change without notice. Some features may be unavailable when your vehicle is built. Some vehicles are pictured with options that may be available at extra cost or may not be available on some models. Ask your dealer about the availability of options and verify that the vehicle you ordered includes the equipment you ordered. Tires are supplied and warranted by their manufacturer. EPA fuel mileages are estimates only. Your fuel consumption may vary. "Volkswagen," the Volkswagen logo, and "4MOTION" are registered trademarks of Volkswagen AG. "Phaeton" and "Side Curtain Protection" are trademarks of Volkswagen AG. "Drivers wanted." is a registered trademark of Volkswagen of America, Inc. "Climatronic" is a trademark of Volkswagen of America, Inc. "Tiptronic" is a registered trademark of Dr. Ing. h.c. F. Porsche AG. "Servotronic" is a registered trademark of the AM General Corporation. "HomeLink" is a registered trademark of the Prince Corporation, Holland, Michigan. Prince is a wholly owned subsidiary of Johnson Controls.™ "OnStar" is a registered trademark of OnStar Corporation. For further information regarding the Phaeton or any other Volkswagen model, please call 1-800 DRIVE VW or, like we said above, look us up at vw.com. Before we sign off, remember, please don't drink and drive. (Sometimes, the most important words are saved for last.) ©2005 Volkswagen of America, Inc. Printed in U.S.A.

Drivers wanted.® 