


The Touareg



 Click here or say "Tour-eg." Catchy eh?



Drivers wanted.® 

The Touareg.

Starts at \$35,900.*

Presenting the Touareg. A sport utility vehicle designed to provide as much joy on-road as off, it's the Volkswagen that does what other Volkswagens don't. We like to think of it as the most intuitive Volkswagen so far. Engineered to a T, designed for comfort and packed with practically a thousand different features for a million different situations, the Touareg has arrived.

*Base M.S.R.P. of \$35,900 for a 2005 Touareg V6. Price excludes taxes, registration, transportation, other options, and dealer charges. Supplies limited. Dealer sets actual prices.

TOUAREG FEATURES (below)

It's not every day a vehicle is packed from head to toe with such delightful features. Individually engineered with practicality in mind, they all do their bit to deliver the most from your driving experience. Attention to detail is key, starting from a feature's overall functionality to its careful design and thoughtful placement. All of which contributes to that distinctively familiar Volkswagen look and feel.

AERO WINDSHIELD WIPERS

Every swipe at pesky droplets counts big time with these aerodynamically designed wipers. And, true to the intuitive nature of the Touareg, when the wipers are turned to the intermittent position a rain sensor will automatically set the wipers in motion when the skies open up.



12-WAY PROGRAMMABLE SEATS¹

These ergonomically designed buttons control the ergonomically designed seats. Up, down, backwards, forwards – they move every way but inside out. The memory pack will store your favorite positions (including settings for the 4-way lumbar support), while the heated side bolsters and center panel will keep you warm on cold, wintry nights.



GPS NAVIGATION SYSTEM²

Erase "Uh honey, we're lost" from your lexicon. There's a sophisticated satellite in space that knows exactly where you are and will fill you in via this 7-inch display. It comes with voice instructions, too (no German accent, though), and tells you exactly how to get wherever it is you're going. There's also a compass and specific info on the precise direction that the Touareg is traveling.



KEYLESS ACCESS ENTRY³

A little trick up our sleeve to welcome you to the 21st Century. If the remote key is on you, a sensor inside the car will detect it. When you touch the door handle, it will automatically unlock the door. To lock it back up, simply press the little button on the door handle and you'll be good to go.



4-ZONE CLIMATRONIC™ CLIMATE CONTROL⁴

Some like it hot. Some like it cold. This feature allows passengers to control the temperature, as well as the amount and direction of air flow in their own space via an individual set of controls. Or the driver can set the vehicle to one temperature with the master button.

5 MORE COOL FEATURES

1. Heatable side mirrors with integrated blinkers
2. Multifunction driver display
3. Optional adjustable air suspension
4. 10-speaker premium stereo with CD player
5. 6-speed auto transmission with Tiptronic®

¹Standard on V8. Optional with package on V6. Memory optional with package for passenger seat on V8.

²Optional on all trim levels. ³Optional with package on V8. ⁴Optional on V8.

Drivers wanted.®



TOUAREG INTERIOR (below)

Like all Volkswagens, the Touareg has an unpretentious air about it. Supple hand-stitched surfaces and fine fabrics decorate the cabin, while burlwood and well-appointed splashes of chrome adorn the consoles. Tasteful, sporty, and modest, everything about the Touareg is just so. (And blissfully quiet, thanks to its acoustic insulation.) Stretch out and take it all in. Front and back, there's plenty of room.



Did you know the Touareg can keep you up-to-date on what's going on in its head via this multifunction driver display? It's directly within your line of vision, and thanks to its simple, straightforward visual cues, it's also really easy to understand.



Did you know the Touareg was named *Auto Week's* SUV/Off-Roader 2004?



REAR WINDOW SHADE¹

The Touareg offers protection from the sun for rear-seat passengers too, courtesy of these handy shades. Made from a tough mesh fabric, they can be easily pulled up and attached to hooks at the top of the window frame. When not in use, they retract completely into the bottom of the window frame.

¹Standard on V8. Optional with package on V6.

Drivers wanted.®



TOUAREG IN ACTION (below)

1. 4XMOTION™ in motion. **2.** Thanks to an adjustable air suspension¹, you'll stay nice and dry in up to 22.8 inches of H₂O? **3.** With Continuous Damping Control¹ and 4XMOTION, the Touareg's as much fun to drive on the road as off. **4.** Even at rest the Touareg can't hide its rugged good looks.



Did you know the Touareg can handle up to 45° angles? Put it this way, when you're going up a 45° angle all you see is the sky.



¹Optional on V6 and V8. ²Equipped with optional air suspension at highest level. Max. fording depth 22.8 inches. Professional driver. NEVER enter water with a current, or of unknown depth.

Drivers wanted.® 

SAFETY FEATURES (below)

The Touareg comes well armored with a variety of intelligent and responsive safety systems. Plus a whole host of other independent safety-related features to help handle everything from a treacherous stretch of road to a tight parking space. Combined, they work tirelessly to help protect you and your passengers, whether you're driving to work, across town, or clear across the country.



ROADSIDE ASSISTANCE¹

The Touareg also has a 24-hour-a-day Roadside Assistance package, for 4 years, unlimited mileage. Wherever you go, there we are.



LATCH SYSTEM²

Every Touareg comes fully equipped with Lower Anchorage Tethers for Child seats – a standardized child seat attachment system that ensures maximum protection.

HOMELINK[®]

Door-to-door safety is the name of the game. Think of HomeLink as a 24-hour electronic butler at your service. It'll operate your garage door, home lights, and security system at the press of a button.

INFLATABLE SPARE TIRE

You'll find it conveniently placed in your trunk, as opposed to underneath the vehicle. (Why make it hard to get to?) It comes with an air compressor that you can use for inflating other stuff, too.



ELECTRONIC PARKING ASSISTANCE³

Parking's a cinch. The Touareg has integrated ultrasonic sensors in its front and rear bumpers. As you get within a few feet of another object, the sensors provide visual and acoustic signals to let you know if you're getting too close. (Can't help you with meter maids, though.)



5 MORE SAFETY FEATURES

1. Volkswagen Telematics by OnStar⁴
2. Tire pressure monitoring system
3. Anti-theft vehicle alarm system
4. ABS (Anti-lock Braking System)
5. Dual front and front side airbags, supplemental restraint system, and Side Curtain Protection™ System ²

¹Roadside Assistance is provided by Road America. See dealer for details. ²Always use safety belts and seat children only in the rear, using restraint systems appropriate for their size and age. ³Optional on all trim levels. ⁴Optional on V6 and V8. Volkswagen vehicles are equipped with a telematics system that utilizes analog telephone signals to enable Volkswagen Telematics by OnStar services. Recently, the U.S. Federal Communications Commission (FCC) ruled that wireless telephone carriers are required to fully support the analog wireless network until February 16, 2008. After this date, it is likely that the analog wireless network will be phased out, rendering analog devices inoperable.

Drivers wanted.®





Black NM



Colorado Red M



Offroad Gray M



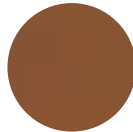
Shadow Blue M



Anthracite



Walnut



Teak



Myrtle

FABRIC

WOOD



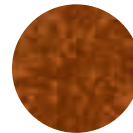
Campanella White NM



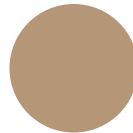
Reed Green M



Gray



Vavona



Beige



Reflex Silver M



Venetian Green M



Blue Silver M



Wheat Beige M

M Metallic Color

NM Non-Metallic Color

BUILD YOUR OWN

Oh, you like the 17" wheels but with an Offroad Gray exterior and the optional navigation system? Configure your own at vw.com/touareg/build.htm.

Drivers wanted. 

KEY:



Standard



Optional

Available
with package

Available



Unavailable

INTERIOR**Aesthetically speaking**

	V6	V8
Power windows with key-operated convenience close and open feature, pinch protection, and automatic driver's side one-touch feature for front windows only	S	S
Tilt-and-slide power glass sunroof with tinted glass, manual sunshade, preselect pinch protection, and convenience-closing feature operated by driver's door power lock	S	S
10-speaker premium VI stereo with AM/FM and single CD player	S	S
Driver and front passenger fully reclining comfort seats with height- and angle-adjustable head restraints	S	S
8-way manual adjustable front seats	S	•
12-way power adjustable front seats with lumbar support and memory function for driver's seat and exterior mirrors	P	S
Heatable front seats	S	S
Heatable rear seats	•	P
Aluminum accents and walnut wood interior trim	S	S
Heated steering wheel	•	P
Ambient lighting in foot wells, door handles and above center console	S	S

For your convenience

	V6	V8
CD-based GPS navigation system with visual and audible commands	O/P	O/P
HomeLink	S	S
Multifunction trip computer (trip time, distance, average speed and fuel consumption, current fuel consumption, and miles to empty)	S	S
Multifunction onboard computer (adjusts driver's preferences)	S	S
Compass	S	S
Dual-zone Climatronic automatic climate control	S	S
Four-zone Climatronic automatic climate control	•	O/P
Central power locking system with remote transmitter	S	S
4-spoke, leather-wrapped, multifunction steering wheel (cruise control, audio and onboard computer)	S	S

EXTERIOR**Front to back**

	V6	V8
Bi-Xenon headlamps with washer system	O/P	O/P
Automatic headlights with coming/leaving home feature	S	S
Side blinkers integrated into side mirrors	S	S
Power flush-folding, auto-dimming exterior mirrors with memory	P	S
Power synchronized, heatable exterior mirrors with passenger tilt while reversing	S	S
Black adjustable, removable roof rack	S	S
Silver adjustable, removable roof rack	•	P
Electronic parking assistance	P	P

SAFETY & SECURITY**Play it safe**

	V6	V8
Dual front and front side impact airbags, supplemental restraint system ¹	S	S
Side Curtain Protection airbags ¹	S	S
Direct tire pressure monitoring system	O	O
Intelligent crash response system	S	S
Volkswagen Telematics by OnStar	O	O

Lockdown

	V6	V8
Keyless access	•	P
Valet key	S	S

**WARRANTY**

BASIC LIMITED WARRANTY: The Touareg comes with a bumper-to-bumper New Vehicle Limited Warranty for 4 years or 50,000 miles, whichever comes first.²

POWERTRAIN LIMITED WARRANTY: The Volkswagen Powertrain Limited Warranty provides 5 years or 60,000 miles of protection, whichever comes first.

ANTI-CORROSION WARRANTY: A fully galvanized steel body means we can offer you a 12-year unlimited mileage Limited Warranty Against Corrosion Perforation.

¹Airbags are supplemental restraints only and will not deploy under all accident scenarios. Always use safety belts and seat children only in the rear, using restraint systems appropriate for their size and age. ²See dealer for more details about option packages. ³Wear and tear items and adjustments are excluded after the first 12 months or 12,000 miles, whichever comes first.

V6 V8

Engineering & Technology**German engineered, of course.**

	V6	V8
3.2L, 240 hp, 228 lb-ft torque V6 engine	S	•
4.2L, 310 hp, 302 lb-ft torque V8 engine	•	S
6-speed automatic transmission with Tiptronic	S	S
4XMOOTION permanent four-wheel drive system with low range gear and adaptive torque distribution	S	S
Center-locking differential	S	S
Rear-locking differential	O	O/P
Front double wishbone independent steel spring suspension	S	S
Rear four-link independent steel spring suspension	S	S
4-Corner adjustable air suspension with 6 adjustable ride heights and Continuous Damping Control (3 adjustable damping settings)	O	O/P
ABS (Anti-lock Braking System) 4-wheel vented disc brakes	S	S
ESP (Electronic Stabilization Program)	S	S
ASR (Anti-slip Regulation traction control)	S	S
EDL (Electronic Differential Lock)	S	S
EBD (Electronic Brake Force Distribution)	S	S
HBA (Hydraulic Brake Assist)	S	S
EBA (Engine Braking Assist)	S	S
Power-assisted rack and pinion steering	S	S
LEV II (Low Emissions Vehicle)	S	•
BIN 10 emissions concept	•	S
Laser beam-welded, unitized construction, fully galvanized steel body	S	S
255/60 R17H, all-season tires (snow chain compatible)	S	•
255/55 R18V, all-season tires (snow chain compatible)	•	S
275/45 R19Y, summer performance tires	•	O

Measurements

Wheelbase	112.4 in
Overall Length	187.2 in
Width	75.9 in
Height	68.0 in
Front/Rear Head Room	38.7/38.3 in
Front/Rear Shoulder Room	57.7/57.4 in
Front/Rear Leg Room	41.3/35.6 in
Passenger Volume	990 cu ft
Cargo Volume (with rear seat folded)	71.0 cu ft
Towing Capacity (max. braked trailer)	7,716 lbs
Maximum Roof Cargo Weight	220 lbs

City Highway

Fuel Consumption (EPA estimates only)

V6	15 mpg	20 mpg
V8	14 mpg	18 mpg
Fuel Tank Capacity	26.4 gallons	
Fuel Requirement (Premium recommended)	Unleaded	

Drivers wanted.®



Optional Packages

V6 Preferred Packages

Package #1

Sound System I with 11 speakers and amplified sound (300 watts) and Bi-Xenon headlamps with washer system

Package #2

Cricket leather-trimmed seating surfaces; 12-way power adjustable front seats with lumbar support and memory function for driver's seat and exterior mirrors; Power flush-folding, auto-dimming exterior mirrors with memory; Front center armrest with dual storage compartments; Walnut wood trim; Side manual sunshades; and Front sliding armrest

Package #3

Combines both Package #1 and Package #2

Package #4

Includes Package #2, plus: Sound System II with 11 speakers and amplified sound (375 watts); CD-based GPS navigation system with visual and audible commands; Electronic parking assistance; and Six-disc CD-changer in cargo area

Package #5

Includes Package #4, plus: Rear-locking differential; 4-Corner adjustable air suspension with 6 adjustable ride heights and Continuous Damping Control (3 adjustable damping settings)

V8 Preferred Packages

Package #1

Sound System I with 11 speakers and amplified sound (300 watts); Bi-Xenon headlamps with washer system; Keyless access; Memory II (passenger seat, steering column, safety belts); Power height-adjustable, telescopic steering column; and Power, height adjustable front safety belts

Package #2

Includes Package #1. Upgrades to: Sound System II with 11 speakers and amplified sound (375 watts). Plus: CD-based GPS navigation system with visual and audible commands; and Six-disc CD-changer in cargo area

Package #3

Includes Package #2, plus: 4-Corner adjustable air suspension with 6 adjustable ride heights and Continuous Damping Control (3 adjustable damping settings); Silver adjustable, removable roof rack; Nappa leather-trimmed seating surfaces; and Myrtle or Vavona wood interior trim

Package #4

Includes Package #3, plus: Rear-locking differential and Electronic parking assistance

Package #5

Includes Package #4, plus: Four-zone Climatronic automatic climate control; Tire Pressure Monitoring System; Heated steering wheel; Heatable rear seats; and Ski sack

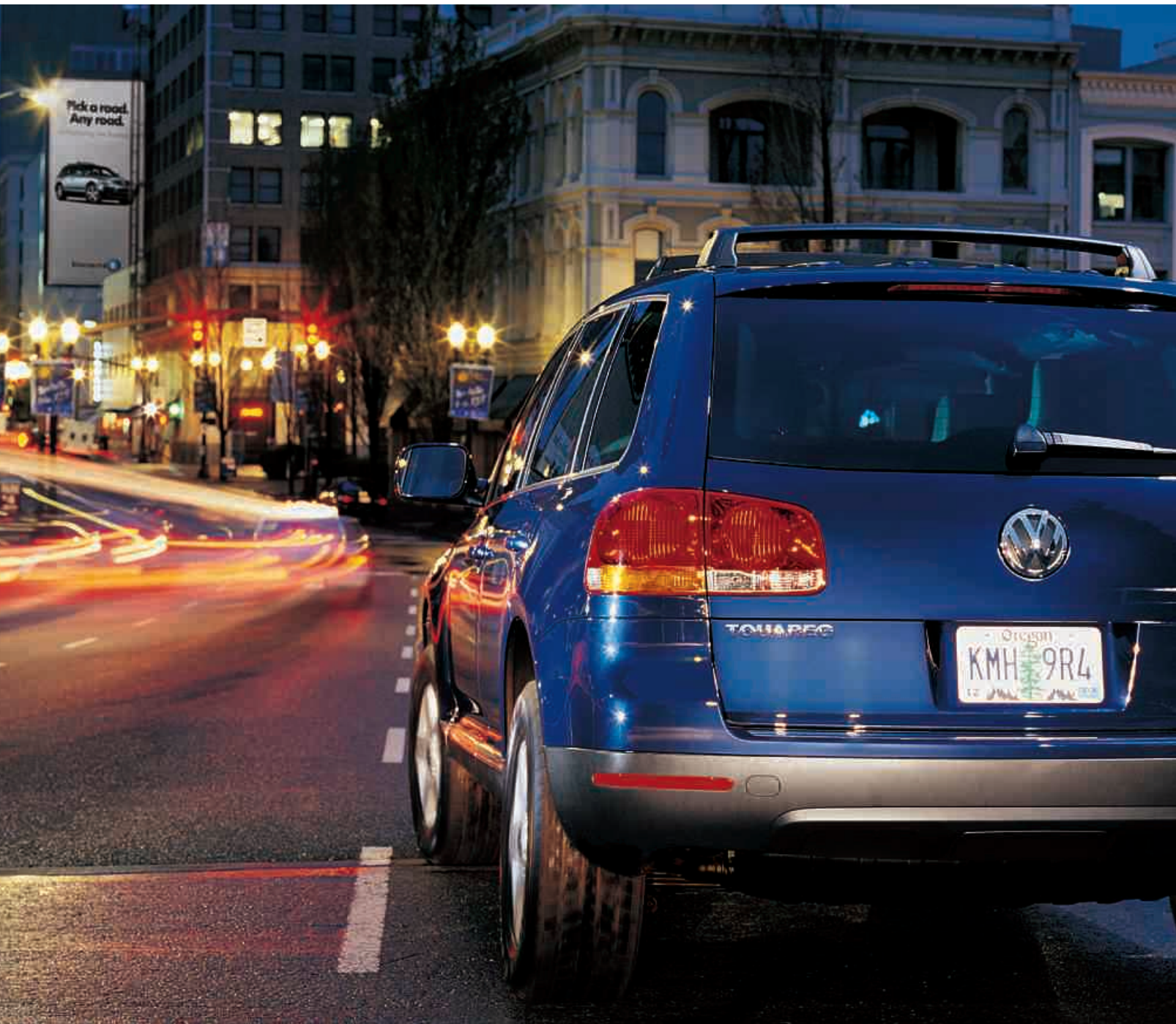
Winter Package (available only with purchase of any V8 package)

Heated steering wheel, Heatable rear seats, and Ski sack



Drivers wanted.®





Why, hello there. Glad you could make it to the legal jargon. Volkswagen of America, Inc. believes the information and specifications in this brochure to be correct at the time of posting to the website. Specifications, standard features, options, fabrics, and colors are subject to change without notice. Some features may be unavailable when your vehicle is built. Some vehicles are pictured with options that may be available at extra cost or may not be available on some models. Ask your dealer about the availability of options and verify that the vehicle you ordered includes the equipment you ordered. Tires are supplied and warranted by their manufacturer. EPA fuel mileages are estimates only. Your fuel consumption may vary. "Volkswagen," the Volkswagen logo, and "Touareg" are registered trademarks of Volkswagen AG. "4Xmotion" is a trademark of Volkswagen AG. "Drivers wanted." is a registered trademark of Volkswagen of America, Inc. "Climatronic" and "Side Curtain Protection" are trademarks of Volkswagen of America, Inc. "Tiptronic" is a registered trademark of Dr. Ing. h.c. F. Porsche AG. "HomeLink" is a registered trademark of the Prince Corporation, Holland, Michigan. Prince is a wholly owned subsidiary of Johnson Controls. "OnStar" is a registered trademark of OnStar Corporation. "Servotronic" is a registered trademark of the AM General Corporation. For further information regarding any Volkswagen model, please call 1-800-DRIVE VW or peruse vw.com some more. Before we sign off, remember, please don't drink and drive. (Sometimes, the most important words are saved for last.) ©2004 Volkswagen of America, Inc.

Drivers wanted.® 