



LINCOLN CORSAIR®



2022

# Elegance that excites.



An expressive, nimble SUV, the 2022 Lincoln Corsair® combines spirited agility with responsive adaptability and a luxurious 5-passenger interior. You're sure to enjoy its advanced technologies, as well as distinctive elements like its beautiful chimes, created exclusively for Lincoln by a world-renowned orchestra. A pleasure to see and to experience, the beauty of Corsair emanates from within.



The available Monochromatic Package lets you choose between Infinite Black Metallic (shown), Pristine White Metallic Tri-coat,<sup>1</sup> or Asher Gray Metallic exterior colors that are accented with 20" black aluminum wheels and stylish, body-color-painted touches.

Vehicle imagery throughout this brochure may be computer-generated and may include available equipment and Lincoln Accessories.  
<sup>1</sup>Additional charge.

ADDS RADIANCE TO LIFE

YOUR WAY, EFFORTLESSLY



Make your drive a seamless and serene experience.

With the Lincoln Way™ App,<sup>1</sup> you are granted access

to essential information about your vehicle. What

does this afford you? Peace of mind, and a better

sense of connection when you're away from

your vehicle. Welcome to an effortless ownership

experience. Welcome to the Lincoln Way.

<sup>1</sup>Lincoln Way App, compatible with select smartphone platforms, is available via download. Message and data rates may apply.

THE LINCOLN WAY APP

Enhance your ownership experience with the

Lincoln Way™ App.<sup>1</sup> With a number of services

and benefits you can take advantage of, you'll

enjoy more time to spend on what matters most.

- Connect and control your vehicle from virtually anywhere with complimentary remote features including start/stop, lock/unlock and scheduled starts.<sup>2</sup>
- Available Phone As A Key<sup>3</sup> lets your smartphone act as a key fob so you won't need to carry anything else except your phone to take a trip.
- Vehicle Details make monitoring your vehicle's health, checking oil life and tire pressure effortless.
- Simply schedule your Lincoln Priority Service by setting a date, time and location for the Lincoln valet to pick up your vehicle and leave a Lincoln Loaner.<sup>4</sup>
- Earn Points toward Lincoln Priority Service and exclusive experiences with Lincoln Access Rewards.<sup>TM5</sup>

<sup>1</sup>Lincoln Way App, compatible with select smartphone platforms, is available via download. Message and data rates may apply. <sup>2</sup>Lincoln Connect™, the Lincoln Way App, and complimentary Connected Service are required for remote features (see Lincoln Way Terms for details). Connected service and features depend on compatible AT&T network availability. Evolving technology/cellular networks/vehicle capability may limit functionality and prevent operation of connected features. Connected service excludes Wi-Fi hotspot. <sup>3</sup>Requires feature activation. Not compatible with all mobile phones. <sup>4</sup>Complimentary Lincoln Pickup & Delivery service is available for 2017 model year and newer Lincoln vehicles with the 4-year/50,000-mile New Vehicle Limited Warranty (whichever comes first). Owners of 2016 and prior model year vehicles may arrange for the service at a cost. Mileage limitations may apply. <sup>5</sup>See your dealer for details.





Enticing you from afar, the flowing lines and graceful exterior illumination of the Lincoln Corsair® SUV invite you to enter and revel in your very own sanctuary. Its confident elegance is enhanced by thoughtful details such as the illuminated door handle pockets and available illuminated welcome mats that offer a warm embrace as you approach.

A glowing welcome.

For an even more illuminating experience, select the available Jeweled LED Headlamps with Dynamic Bending. They also feature Speed Dependent Lighting that spreads more widely at slower speeds to highlight the area around and in front of your vehicle.



BRIGHTENS YOUR PERSPECTIVE



## Your own personal space.

The warm, welcoming experience offered to you by the Corsair® SUV is a Lincoln signature design. Whether you're seeking a peaceful oasis or an energetic drive, simply take your place inside and the possibilities abound. Relax in the available premium leather-trimmed seats that conform to your body. Available Perfect Position front seats feature 24-way power adjustability, plus heating and ventilation, with the option to enjoy 5 available massage settings with 3 levels of intensity.

\*Don't drive while distracted. See Owner's Manual for details and system limitations.

Keep yourself well-informed with the available Head-Up Display<sup>1</sup> and the brilliant 8" LCD touchscreen at the center of it all. And each time you return, Corsair can recall your unique preselected preferences with personal profiles that recognize you by your key fob.



R E S P O N D S   T O   Y O U R   T O U C H

Embrace the calm.

Within its airy interior, the Lincoln Corsair® SUV offers a well-appointed place to gather up to 5 people, or to simply relax and recharge. The available Panoramic Vista Roof® with power sunshade opens at the push of a button. With a sliding rear seat, it's easy to offer passengers more leg room or create more space for cargo. And the available hands-free liftgate lets you access the cargo area with ease.



# Grand possibilities.

2.5-LITER I-4 GRAND TOURING PLUG-IN HYBRID  
266 COMBINED HORSEPOWER<sup>1</sup>

Agile, sporty and a true pleasure to drive, the Lincoln Corsair<sup>®</sup> Grand Touring<sup>2</sup> SUV is a plug-in hybrid with the confidence of Intelligent all-wheel drive (AWD). It's easy to charge when you want electric power at the ready, and you can simply fuel it up. Experience the seamless convergence of modern technologies in Corsair Grand Touring.



## SUIT YOUR STYLE WITH A CUSTOMIZABLE DRIVE

Corsair empowers you with a selection of up to 7 distinctive Lincoln Drive Modes – starting with Normal, Conserve, Excite, Slippery and Deep Conditions. Grand Touring Plug-In Hybrid models add Pure EV and Preserve EV modes. With the turn of a dial, the system adjusts traction control, steering and pedal response, available Intelligent AWD and suspension settings, even the sound of the engine, to help provide a remarkable driving experience – wherever your travels take you.



<sup>1</sup>Calculated via combined performance of the engine and electric motor with peak battery power. The calculations utilize SAE J1349<sup>®</sup> engine results and Lincoln electric motor dyno testing. Your results may vary. Horsepower and torque are independent attributes and may not be achieved simultaneously. <sup>2</sup>Available at EV-certified Lincoln Dealers.

# Spirited performers.



TURBOCHARGED 2.0-LITER I-4  
250 HORSEPOWER<sup>1</sup>  
280 LB.-FT. OF TORQUE<sup>1</sup>

The Lincoln Corsair® SUV is powered by a standard Turbocharged 2.0-liter engine that smoothly responds as you press the accelerator, anticipating your thrilling drive. Pair it with either front-wheel drive or available Intelligent all-wheel drive (AWD) for all-season confidence.

TURBOCHARGED 2.3-LITER I-4  
295 HORSEPOWER<sup>1</sup>  
310 LB.-FT. OF TORQUE<sup>1</sup>

Those seeking more power will happily find it provided by the available 2.3-liter engine paired with Intelligent AWD. With spirited agility and effortless acceleration, this turbocharged powertrain offers an energetic and polished driving experience.

Each of these available engines is paired with an 8-speed SelectShift® automatic transmission designed to provide the right gear at the right time, giving you a refined drive that's smooth, sporty and sophisticated.

<sup>1</sup>Horsepower and torque ratings based on premium fuel per SAE J1349® standard. Your results may vary. Horsepower and torque are independent attributes and may not be achieved simultaneously.

The available Sport Package (above) provides an added boost of excitement in both look and feel. The Turbocharged 2.3-liter engine is supported by Intelligent AWD, a sleek black mesh upper grille and 20" bright-machined aluminum wheels with Magnetic-painted pockets.



VOICE-ACTIVATED SYNC® 3



#### CONNECT AND COMMAND

SYNC 3 voice-activated technology<sup>1</sup> connects your tech with your Lincoln Corsair® SUV, and puts you in control of calls, music and more with the tap of a button on your steering wheel and simple voice commands. You can also take advantage of Apple CarPlay® and Android Auto™ compatibility to view your phone's familiar interface on the 8" LCD capacitive touchscreen.<sup>2</sup>

#### IN-APP AND IN CONTROL

Corsair lets you enjoy voice control of compatible mobile apps on your connected phone using SYNC AppLink.<sup>3</sup> The system also works with your Lincoln Way™ App where you can access information about your vehicle and remotely lock, unlock, start and stop your Corsair all from your smartphone.<sup>4</sup>

<sup>1</sup>Don't drive while distracted or while using handheld devices. Use voice-operated systems when possible. Some features may be locked out while the vehicle is in gear. Not all features are compatible with all phones. <sup>2</sup>Requires phone with active data service and compatible software. SYNC 3 does not control 3rd-party products while in use. 3rd parties are solely responsible for their respective functionality. <sup>3</sup>Commands may vary by phone and AppLink software. <sup>4</sup>Lincoln Connect™, the Lincoln Way App, and complimentary Connected Service are required for remote features (see Lincoln Way Terms for details). Connected service and features depend on compatible AT&T network availability. Evolving technology/cellular networks/vehicle capability may limit functionality and prevent operation of connected features. Connected service excludes Wi-Fi hotspot.



#### ENGAGE WITH DYNAMIC AUDIO

The available Revel® Audio System delivers finely crafted sound in full. With personalized listening modes like "Stereo," "Audience" and "On Stage," you have the freedom to experience different levels of sound immersion for any journey. Outstanding, multi-dimensional sound is courtesy of 14 carefully placed speakers including a subwoofer, cabin correction tuning, QuantumLogic® Surround sound technology and Revel Waveguides. You won't just hear the level of precision and musical accuracy – you'll feel it.



#### STAY INFORMED AND ENTERTAINED

SiriusXM® gives you ad-free music, plus sports, comedy, news and talk – inside your Lincoln Corsair® SUV and on the go – with a 3-month Platinum Plan trial subscription<sup>1</sup>. With the available Voice-Activated Touchscreen Navigation System, you'll also enjoy a 6-year subscription<sup>1</sup> to SiriusXM Traffic and Travel Link® services.



The available wireless charging pad<sup>2</sup> lets you keep devices charged clutter-free – without any cords.



Lincoln Connect™<sup>3</sup> enables a 4G LTE Wi-Fi hotspot connection for up to 10 devices at once.<sup>4</sup>

<sup>1</sup>Trial length and service availability may vary by model, model year or trim. Radio features, content and display may vary by vehicle. Some features may not be available while driving. Your trial subscription will automatically stop at the end of your trial period. Subscriptions offered and sold separately by SiriusXM for continued use after trial. Services are subject to the SiriusXM Customer Agreement and Privacy Policy available at [siriusxm.com](http://siriusxm.com) which includes complete terms and how to cancel which includes online methods or calling 1-866-635-2349. All fees, content and features are subject to change. <sup>2</sup>Qi wireless charging may not be compatible with all mobile phones. <sup>3</sup>Lincoln Connect, the Lincoln Way App, and complimentary Connected Service are required for remote features (see Lincoln Way Terms for details). Connected service and features depend on compatible AT&T network availability. Evolving technology/cellular networks/vehicle capability may limit functionality and prevent operation of connected features. Connected service excludes Wi-Fi hotspot. <sup>4</sup>Don't drive distracted or while using handheld devices. Use voice controls.



9:30 70° 0 MPH 35

My Time 70°

RESUME

SET +

SET -

CANCEL

AIRBAG

Driving the Lincoln Corsair® SUV, you immediately feel a sense of command. Keep your eyes on the road by getting valuable trip data at a glance, with the available digital Head-Up Display.<sup>1</sup> And as you head toward your next arrival, the electric power-assisted steering (EPAS) provides easy, fluid control. Plus, available Intelligent all-wheel drive uses sensors to constantly monitor your grip on the road, giving you confidence on-demand.

There to help you stay on the course ahead or to take the guesswork out of what's behind, Corsair driver-assistance features<sup>2</sup> can help you in some tough situations. Take control of your travels with help from our Lincoln Co-Pilot360™ Technology.

**STANDARD LINCOLN CO-PILOT360 1.5**

- Auto High-Beam Headlamps
- Blind Spot Information System
- Cross-Traffic Alert with Braking
- Lane-Keeping System:  
includes Lane-Keeping Aid, Lane-Keeping Alert and Driver Alert System
- Pre-Collision Assist with Automatic Emergency Braking:  
includes Pedestrian Detection, Forward Collision Warning and Dynamic Brake Support
- Rear Parking Sensors
- Rear View Camera



A little extra assistance can go a long way. With available Lincoln Co-Pilot360 1.5 Plus, you have additional features on hand that can enhance your drive in order to help you feel confident and aware.<sup>2</sup>

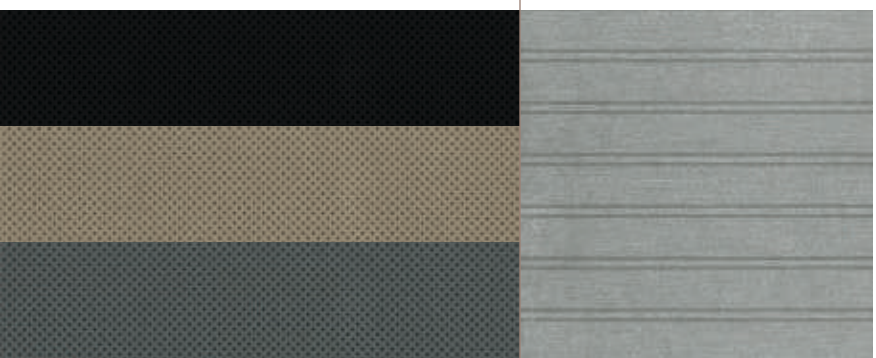
**AVAILABLE LINCOLN CO-PILOT360 1.5 PLUS**

- 360-Degree Camera with Front and Rear Camera Washers
- Active Park Assist 2.0
- Intelligent Adaptive Cruise Control  
with Stop-and-Go, Lane Centering Assist and Speed Sign Recognition
- Evasive Steering Assist
- Front/Side/Rear Parking Sensors
- Reverse Brake Assist

<sup>1</sup>Don't drive while distracted. See Owner's Manual for details and system limitations. <sup>2</sup>Driver-assist features are supplemental and do not replace the driver's attention, judgment and need to control the vehicle. It does not replace safe driving. See Owner's Manual for details and limitations.

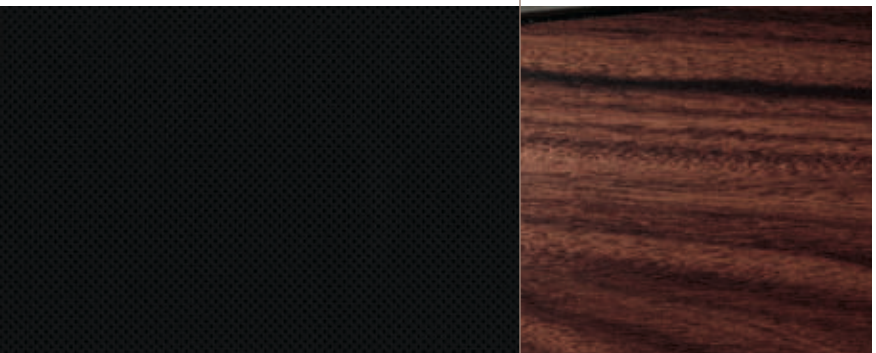
INTERIOR CRAFTSMANSHIP

While creating each distinctive Lincoln Corsair® SUV interior environment, our designers commit themselves to craftsmanship that goes beyond what can be seen. They pour their passion for comforting elegance into each collection of materials, accent trims, and colors – all to ensure every Corsair provides our signature feeling of sanctuary.



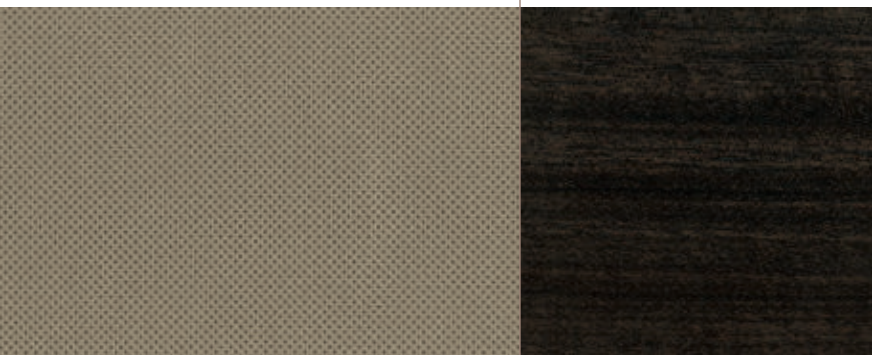
Ebony or Sandstone Corsair<sup>1</sup> 1-8, 10  
Medium Slate Corsair<sup>1</sup> 2-8, 10  
Reserve/Grand Touring 2-10

Pinstripe Aluminum



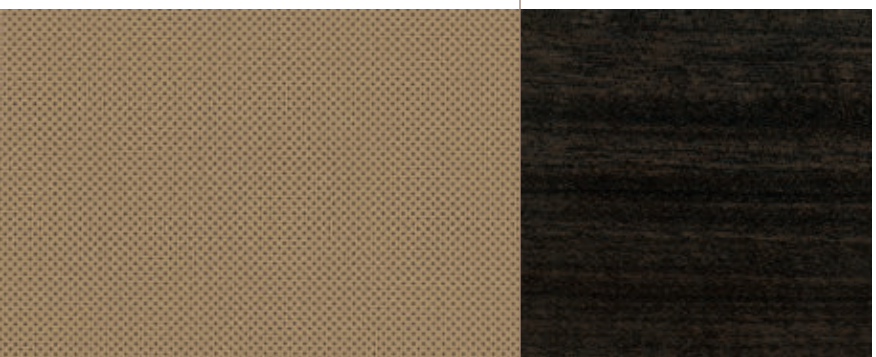
Ebony Reserve/Grand Touring 1-10

Santos Rosewood



Sandstone Reserve/Grand Touring 1-10

Paldao Wood



Cashew Reserve/Grand Touring 1, 3-10

Paldao Wood



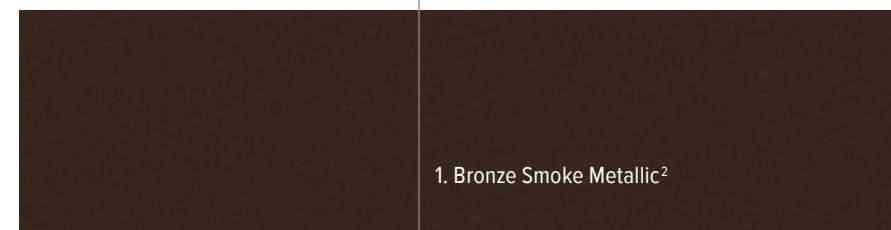
Cashew Reserve/Grand Touring 1, 3-10

Pinstripe Aluminum

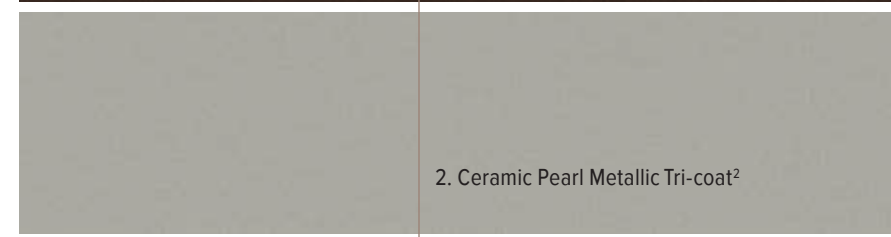


Exterior and interior colors shown are representative only.

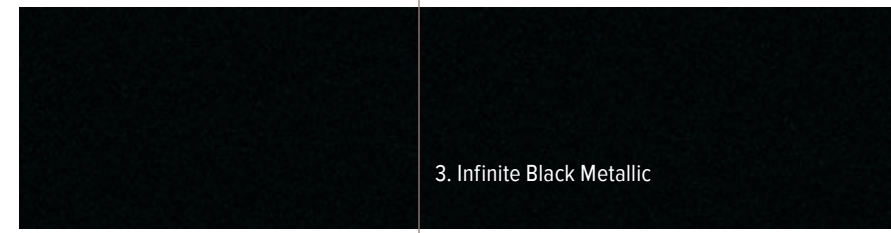
<sup>1</sup>Lincoln Soft Touch Seats standard on Corsair. <sup>2</sup>Additional charge.



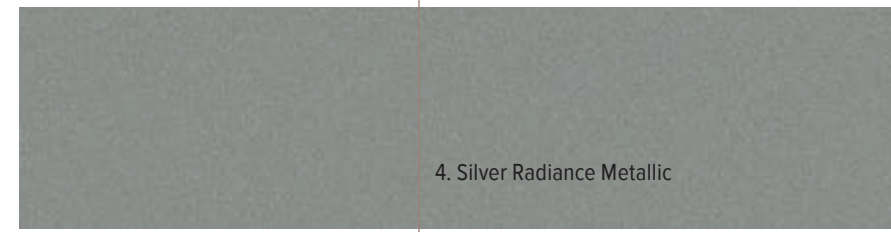
1. Bronze Smoke Metallic<sup>2</sup>



2. Ceramic Pearl Metallic Tri-coat<sup>2</sup>



3. Infinite Black Metallic



4. Silver Radiance Metallic



5. Pristine White Metallic Tri-coat<sup>2</sup>



6. Asher Gray Metallic



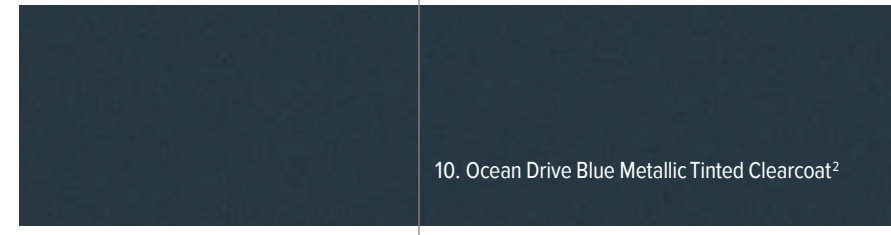
7. Elite Blue Metallic



8. Red Carpet Metallic Tinted Clearcoat<sup>2</sup>



9. Flight Blue Metallic<sup>2</sup>



10. Ocean Drive Blue Metallic Tinted Clearcoat<sup>2</sup>





Scan this code to request your virtual Lincoln Showcase tour. Data rates may apply.

## LINCOLN SHOWCASE

Experience an exclusive, all-virtual vehicle tour from the comfort of your home. Lincoln Showcase is a great way to get to know your Lincoln vehicle on a whole new level. Explore new technologies and features remotely with a knowledgeable product specialist who can answer any question you may have.

## LINCOLN PROTECT® EXTENDED SERVICE PLANS

Whether you purchase or lease your Lincoln, Lincoln Protect offers peace of mind with a variety of plans for vehicle component and maintenance coverage. Plans fully backed by Lincoln are honored at all Lincoln dealerships in the U.S., Canada and Mexico.

## ROADSIDE ASSISTANCE FOR LIFE

We'll be there for you as long as you own your Lincoln – with 24-hour/7-day-a-week assistance nationwide. Lifetime coverage provided for the original owner only; second and subsequent owners receive coverage for 6 years/70,000 miles (whichever comes first) from original date of sale. Please see your dealer for complete details.

## LINCOLN AUTOMOTIVE FINANCIAL SERVICES

Whether you decide to purchase or lease, you'll find a plan designed to fit your individual needs. Visit [Lincoln.com/finance](http://Lincoln.com/finance) or your Lincoln Showroom to explore your financing options.

## NEW VEHICLE LIMITED WARRANTY

Your new Lincoln has the following coverage: 4-year/50,000-mile bumper-to-bumper coverage (whichever comes first), 6-year/70,000-mile powertrain coverage (whichever comes first), 5-year/60,000-mile safety restraint coverage (whichever comes first), and 5-year/unlimited-mile corrosion perforation (aluminum panels do not require perforation) coverage (whichever comes first). Unique electric components come with 8-year/100,000-mile hybrid/electric unique coverage (whichever comes first). Please ask your dealer for a copy of these limited warranties.

## LINCOLN MOTOR COMPANY INSURE

Insurance that lets you earn discounts for safe driving, offering a maximum discount of 40% off your auto insurance. Lincoln Motor Company Insure works with your 2022 model-year Lincoln to gauge your driving habits and calculate a discount based on how you drive. Visit [www.lincolnmotorcompanyinsure.com](http://www.lincolnmotorcompanyinsure.com) to learn more.

American Road Services Company LLC (a Lincoln affiliate) is the licensed insurance agency offering Lincoln Motor Company Insure, which is underwritten by Nationwide Mutual Insurance Company and affiliates. Home Office: Columbus, OH. Lincoln Motor Company and Lincoln Automotive Financial Services are not insurance companies or agents. Subject to underwriting guidelines, review and approval. Details and availability varies; program criteria differ in California. Discounts do not apply to all coverage elements; actual savings vary by state, coverage selections, rating factors and policy changes.

Comparisons based on competitive models (class is Premium Small/Premium Compact Utility), publicly available information and Lincoln certification data at time of release. Vehicles may be shown with optional equipment. Features may be offered only in combination with other options or subject to additional ordering requirements/limitations. Dimensions shown may vary due to optional features and/or production variability. Information is provided on an "as is" basis and could include technical, typographical or other errors. Lincoln makes no warranties, representations, or guarantees of any kind, express or implied, including but not limited to, accuracy, currency, or completeness, the operation of the information, materials, content, availability, and products. Lincoln reserves the right to change product specifications, pricing and equipment at any time without incurring obligations. Your Lincoln Dealer is the best source of the most up-to-date information on Lincoln vehicles.