

2011 **Chevrolet HHR**





## Go someplace fun.

HHR will get you and your stuff where you want to go – conveniently and efficiently – with better fuel economy than any competitor<sup>1</sup> with an EPA estimated 32 MPG highway (LS and 1LT models). Two body styles are available, including a panel version. And choose from two engines – a standard 2.2L ECOTEC and an available 2.4L ECOTEC (passenger models), both with Variable Valve Timing. You'll get there safely with standard features like the StabiliTrak Electronic Stability Control System with Traction Control, four-wheel ABS and OnStar<sup>®2</sup> with Automatic Crash Response that is standard for the first six months. And every HHR comes backed by the Chevy 100,000 mile/5-year<sup>3</sup> Powertrain Warranty to guarantee the quality.

*“Versatility is definitely one of the [vehicle’s] strong suits, with features like a front passenger seat that folds down to accommodate longer items and a cargo floor that hides a shallow storage bin and also lifts to create a two-tier load area.”*



**Fold it flat.** With 24 different interior configurations, HHR offers up to 57.7 cu. ft.<sup>5</sup> of maximum storage room, while HHR Panel provides up to 62.7 cu. ft.<sup>5</sup> A 60/40 split-bench rear seat in HHR folds flat to accommodate longer items, and both models feature a fold-flat front passenger seat.



**Bundle all your tech favorites.** The MYLINK Technology Package (available on LS and 1LT) includes a CD/MP3 player and USB port,<sup>5</sup> Bluetooth<sup>®</sup> wireless technology<sup>7</sup> for select phones, XM Radio<sup>8</sup> with one-year trial, OnStar<sup>2</sup> with Turn-by-Turn Navigation standard for the first 12 months, and a leather-wrapped shift knob and steering wheel with mounted Driver Information Center and audio controls. These features are also available on other models. Go to [chevy.com/hhr](http://chevy.com/hhr) for details.

**Go the distance.** HHR offers up to 512 highway miles between fill-ups – which means less time at the gas pump and more time on the road.

Fuel Comparisons (standard models)	EPA est. MPG (hwy.)	Max. hwy. driving range (miles)
2011 Chevy HHR	32	512
2010 Kia Rondo	27	426
2010 Mazda5	28	445
2011 Scion xB	28	392

For more information, visit [chevy.com/hhr](http://chevy.com/hhr).



**Protected and Connected with OnStar<sup>2</sup>**

Experience the safe, simple way to stay connected on the road. OnStar is now standard on all models with the Directions & Connections<sup>®</sup> Plan for the first six months (12 months on LS and LT with the available MYLINK Technology Package). Included in this plan is Vehicle Diagnostics, which performs automatic checks of key operating systems in your vehicle. A monthly report is then sent via email. You can also get an On-Demand Diagnostics check – just push the blue OnStar button.

**HHR Panel: Open for business.**

HHR Panel combines the best qualities of a car, truck and van, making it the ideal business partner. It's economical and versatile, offering an EPA est. 32 MPG highway and more than 62 cubic feet of maximum cargo space.<sup>5</sup> The multipurpose HHR Panel features a large, lockable underfloor cargo area; an adjustable rear cargo shelf; an available slide-out cargo load floor; and much more. Learn more about HHR Panel at [chevy.com/hhrpanel](http://chevy.com/hhrpanel).



HHR 2LT in Victory Red (at left) with an EPA estimated 30 MPG highway and HHR Panel in Silver Ice Metallic (at right). 1 Based on GM Compact MPV segment. 2 Visit [onstar.com](http://onstar.com) for coverage map, details and system limitations. Services vary by model and conditions. OnStar acts as a link to existing emergency service providers. 3 Whichever comes first. See dealer for limited warranty details. 4 For more information, visit [Kelley Blue Book's kbb.com](http://KelleyBlueBook.com). Kelley Blue Book is a registered trademark of Kelley Blue Book Co., Inc. 5 Cargo and load capacity limited by weight and distribution. 6 Not compatible with all devices. 7 Go to [gm.com/bluetooth](http://gm.com/bluetooth) to find out which phones are compatible with the vehicle. 8 Requires a subscription sold separately by XM after trial period. Available only in the 48 contiguous United States and District of Columbia. Visit [gm.xmradio.com](http://gm.xmradio.com) for details.



# HHR fabrics and colors.

For details about standard features, options and pricing, visit [chevy.com/hhr](http://chevy.com/hhr).

11CHEHRCAT01



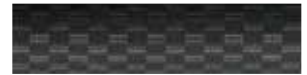
Gray Leather Appointments



Ebony Leather Appointments



Gray Cloth



Ebony Cloth



Cyber Gray Metallic



Crystal Red Metallic Tintcoat  
(extra-cost color)



Arctic Ice



NEW Mocha Steel Metallic



NEW Black Granite Metallic  
(extra-cost color)



Victory Red



Silver Ice Metallic



Imperial Blue Metallic

## Important information.

**100,000 MILE/5-YEAR TRANSFERABLE POWERTRAIN LIMITED WARRANTY.** Every 2011 Chevy passenger car, light-duty truck, SUV and crossover comes with a 100,000 mile/5-year (whichever comes first) transferable Powertrain Limited Warranty. Plus, you get 100,000 miles/5 years (whichever comes first) of the 24/7 Roadside Assistance Program and the Courtesy Transportation Program and much more. See dealer for details, or visit [chevy.com/warranty](http://chevy.com/warranty).

**NEW VEHICLE LIMITED WARRANTY.** GM vehicles registered in the U.S.A. are covered for 3 years/36,000 miles (whichever comes first). The complete vehicle is covered, including tires, towing to your nearest Chevrolet dealership and cosmetic corrosion resulting from defects. Repairs will be made to correct any vehicle defect, and most warranty repairs will be made at no charge. In addition, rust-through corrosion will be covered for 6 years/100,000 miles (whichever comes first). See dealer for details.

**ENGINES.** Chevrolet products are equipped with engines produced by GM Powertrain or other suppliers to GM worldwide. The engines in Chevrolet products may also be used in other GM makes and models.

**ASSEMBLY.** Chevrolet vehicles and their components are assembled or produced by different operating units of General Motors, its subsidiaries, affiliates, or licensors. We sometimes find it necessary to produce Chevrolet vehicles with different or differently sourced components than originally scheduled. Since some options may be unavailable when your vehicle is assembled, we suggest you verify that your vehicle includes the equipment you ordered and that, if there were changes, they are acceptable to you.

**ONSTAR.** OnStar services require vehicle electrical system (including battery), wireless service and GPS satellite signals to be available and operating for features to function properly. OnStar acts as a link to existing emergency service providers. Subscription Service Agreement required. Call 1-888-4ONSTAR (1-888-466-7827) or visit [onstar.com](http://onstar.com) for OnStar Terms and Conditions, Privacy Statement, and details and system limitations.

**A NOTE ABOUT CHILD SAFETY.** Always use safety belts and the correct restraint for your child's age and size. Even in vehicles equipped with the Passenger Sensing System, children are safer when properly secured in a rear seat in the appropriate infant, child or booster seat. Never place a rear-facing infant restraint in the front seat of any vehicle equipped with a passenger air bag. See the Owner's Manual and child safety seat instructions for more safety information.

**IMPORTANT WORDS ABOUT THIS CATALOG.** We have tried to make this catalog comprehensive and factual. We reserve the right, however, to make changes at any time, without notice, in prices, colors, materials, equipment, specifications, models and availability. Specifications, dimensions, measurements, ratings and other numbers in this catalog and other printed materials provided at the dealership or affixed to vehicles are approximates based upon design and engineering drawings, prototypes and laboratory tests. Your vehicle may differ due to variations in manufacture and equipment. Since some information may have been updated since the time of printing, please check with your Chevrolet dealer for complete details. Chevrolet reserves the right to lengthen or shorten the model year for any product for any reason or to start and end model years at different times. Certain vehicle features may lose their usefulness over time due to obsolescence from technological changes. Unless otherwise noted, all claims based on GM Compact MPV segment and latest available competitive information. Excludes other GM vehicles.

**ROADSIDE ASSISTANCE PROGRAM and COURTESY TRANSPORTATION PROGRAM.** Visit [chevy.com/warranty](http://chevy.com/warranty) for details.

**CHEVROLET CUSTOMER ASSISTANCE CENTER.** Call 1-800-222-1020 or visit [chevy.com/warranty](http://chevy.com/warranty).

**FLEET ORDERS.** Some standard content may be deleted with fleet orders. See dealer for details.

GM, the GM Logo, Chevrolet, the Chevrolet Logo, and the slogans, emblems, vehicle model names, vehicle body designs and other marks appearing in this catalog are the trademarks and/or service marks of General Motors, its subsidiaries, affiliates, or licensors. The Bluetooth word mark is a registered trademark owned by Bluetooth SIG, Inc. and any use of such mark by Chevrolet is under license. iPod is a mobile digital device. iPod is a registered trademark of Apple, Inc. All rights reserved. SIRIUS, XM and all related marks and logos are trademarks of SIRIUS XM Radio Inc. and its subsidiaries. ©2010 OnStar. All rights reserved. ©2010 General Motors. All rights reserved.  
Litho in U.S.A. June 2010

