

# C5



**CITROËN**  
VIVE LA DIFFERENCE

[www.citroen.com.au/c5](http://www.citroen.com.au/c5)

## *pure Citroën*

Citroën's remarkable new luxury saloon comes bursting into a field of look-alikes to occupy centre stage. This is the new Citroën C5: sophisticated and beautifully styled, it bristles with the latest digital technology and combines top-of-the-range elegance with a character that dares to be different. Generous dimensions and a confident, powerful stance, make the Citroën C5 an imposing, alluring new presence on the road. With long flowing lines, a graceful profile with its sweeping arch of glass, broad bonnet and sleek cluster headlamps set high on the wings, the new C5 is pure style. Pure Citroën.



## *the intelligent choice*

### ***A new car for a new era, intelligent in every way***

Imagine a car so intelligent it can read the road conditions and the style of your driving. Imagine it can react, in the blink of an eye, to transform an everyday journey into a unique driving experience. Or a car that can automatically lower its ride height at freeway speeds to give even greater stability and better fuel economy. That car is the new Citroën C5. And that's only the beginning. C5 is packed with innovations that are at the leading edge of today's automotive technology. Innovations that are there to bring you executive class quality, comfort, optimal safety, economy and intense driving pleasure.

The new Citroën C5 uses an advanced Multiplex electrical system, which reduces the amount of electrical cabling in the car by 30%, increases reliability and delivers a wealth of innovative functions that can respond instantly to changing external conditions.

So at dusk, or when you enter a tunnel or dark underground car park, C5's headlamps can be programmed to come on – automatically. The car can be programmed so that when it starts to rain, the windows close and the rain sensitive windscreen wipers turn themselves on. In the event of rapid deceleration, the hazard warning lights are self-activated to alert drivers behind you. An audible over-speed warning tells you if you exceed your pre-programmed speed limit. A multi-function on-board trip computer provides vital driver information, such as the car's range on its remaining fuel. And on the V6 Exclusive rear parking sensors, combined with a passenger door mirror that automatically adjusts to let you 'see' the kerb when reversing, helps you park more easily.

These are just a few of the technological innovations you can find on-board the new Citroën C5. They are all designed to help make driving safer and a real joy.



#### **REAR PARKING SENSOR**

A rear parking sensor to aid reversing on the V6 Exclusive.



#### **DOOR MIRRORS**

An indexable and self-adjusting passenger door mirror is also part of the parking assistance pack on the V6 Exclusive.

## *ergonomic excellence*

***The new Citroën C5 is beautifully adaptable, not only adjusting itself to the road conditions, but also to the many demands of its driver and passengers***

C5's cockpit is where intelligent design and passionate attention to detail come together to promote the comfort, safety and well-being of the driver. Nothing has been left to chance, ensuring you stay relaxed, alert and in control, even on the longest journeys.

Take the driving position. Citroën's designers have crafted it to fit any shape of driver, to promote comfort and to minimise fatigue. The four-spoke steering wheel adjusts for height and reach; the driver's seat adjusts for height, reach and tilt; the anti-glare door mirrors adjust electrically for optimum visibility; the front seat belts are height adjustable; and the front head restraints are height and tilt adjustable. Even the folding armrests are fully adjustable, to help you find the position that is most comfortable for you.

At 1.48m, C5 is exceptionally 'tall', so there's generous headroom for everyone. The raised position of the front seats gives improved back support, as well as a commanding view of the road. The dashboard has been designed with one overriding objective: to improve the quality of your everyday driving experience. The resulting layout is logical and user-friendly, with controls and instruments thoughtfully conceived and carefully placed. A multi-function screen at the top of the dashboard relays a wealth of driver information, including radio status and warning signals – all at a glance. Similarly, on some models, steering mounted cruise control allows you to set and adjust your cruising speed without having to take your hands from the wheel. This is also true of the steering mounted controls for the stereo radio/CD system, which is standard specification across the range.



### ***METICULOUS ATTENTION TO ERGONOMIC DETAIL***

All controls are carefully designed to be within easy reach of the driver, with others easily accessible to the front passenger. The central multi-function screen, at the top of the dashboard, is clearly visible to all occupants.



### ***RDS STEREO RADIO/ CD PLAYER***

Controls for the RDS stereo radio/CD player are within easy reach, without you having to take your hands away from the steering wheel for long.



### ***CRUISE CONTROL***

Steering mounted cruise control is carefully positioned at your fingertips.

## **total comfort**

***From the quality of the seats and the air conditioning systems to the quietness of the cabin, everything has been designed to take great care of C5's occupants***

To create a truly luxurious, comfortable cabin, first you need space. With 91cm of headroom in the front and 86cm in the back, plus an enormous 154cm of front elbow-room and 152cm in the rear, C5's passenger compartment is class-leading for overall spaciousness. Add the extra rear leg-room afforded by the flat floor, and you soon realise the new Citroën C5 is no ordinary mid-range saloon. When you step into the cabin, you immediately feel comfortable and relaxed. The seats are long and wide, giving consistent support across their entire surface area. The high, broad backrests of the front seats are gently curved at the base for good lumbar support and more markedly curved at shoulder height to support the upper back. After long hours of freeway driving, comfortable seating is more than a luxury, it becomes a safety feature, helping to keep you alert and concentrating on the road ahead. Air conditioning is specified across the C5 range. Automatic digital air conditioning, standard on most models, incorporates a sunlight sensor that adjusts the air temperature to compensate for the intensity of the sun's rays. This system also features independent temperature controls for the driver and front passenger, which can again help to overcome driver fatigue. A heat-reflecting windscreen, tinted windows, a rear sunblind and innovative double sunvisors, all keep you and your passengers cool, calm and collected, even on the hottest days. Thanks to advanced engineering, which significantly reduces engine noise at source, coupled with impressive sound and vibration insulation, C5's cabin is whisper-quiet, even at high speeds. With an increased number of seals on the doors, aerodynamically styled door mirrors, a shortened rear mounted aerial and recessed windscreen wipers, Citroën's designers have also reduced wind noise, all making C5's cabin a haven of peace and quiet.



### **DOUBLE SUNVISORS**

Double sunvisors protect your eyes, regardless of the position of the sun.



### **AIR CONDITIONING**

Automatic air conditioning with independent temperature controls for the driver and front passenger.



### **HEAT-REFLECTING WINDSCREEN**

Standard across the range, C5's heat-reflecting windscreen helps the air conditioning systems maintain a comfortable cabin temperature.

## *active safety*



### **AUTOMATIC ILLUMINATION OF DRIVING LIGHTS**

All models utilise an electronic sensor that detects low light levels (at dusk or in a dark underground car park), or a series of front wiper movements, to switch on the head lights automatically.



### **SIX AIRBAGS**

The driver's and front passenger's airbags are adaptive, with two lateral airbags built into the front seats. Also in the event of a side impact, side window airbags are located in the roof lining.



### **AUTOMATIC HAZARD WARNING LIGHTS**

In the event of rapid deceleration, C5's hazard warning lights are activated automatically to alert drivers behind you.



### **AUTOMATIC RAIN SENSITIVE WINDSCREEN WIPERS**

The windscreen wipers, can switch on automatically and adjust their wipe rate according to the intensity of the rain.

***Protecting you and your passengers is Citroën's first priority. C5's active safety features are designed to help you avoid many forms of accident***

A car's ability to hold the road under difficult driving conditions plays a major role in accident prevention. Thanks to its advanced suspension system, which continuously adapts to the nature of the road and your driving style, C5 maintains optimal stability and balance. Even when travelling at speed, on tight corners or hairpin bends, the suspension system keeps the car poised and agile, minimising the risk of the driver losing control. Citroën cars are renowned for their road-holding and handling. With the new C5 this reputation is strengthened and enhanced.

Intelligent suspension is complemented with high performance braking. On all new Citroën C5 models, ABS is specified with Electronic Brakeforce Distribution (EBD), Emergency Braking Assistance (EBA) and an Electronic Stability Program (ESP). Research shows that many drivers are reluctant to brake with full force in an emergency. EBA compensates for this by automatically maximising application of the brakes when strong braking is initially detected. Stopping distances are minimised in an emergency, whilst the ABS eliminates any danger of the wheels locking-up.

On Exclusive V6 models, additional reassurance comes from C5's traction control feature with Acceleration Slip Reduction (ASR), which detects wheel spin and utilises the braking system and engine to restore grip. And a tyre pressure warning system continually checks for, and warns the driver of, any significant drop in tyre pressure.

C5's comprehensive package of active safety features also includes power assisted steering. Light when parking and progressively firmer at speed, this ensures precise driver control at all times.

## *passive safety*

***C5 has been designed and built to minimise the effects of all types of impact, from any angle, and with any degree of severity***

C5's passive safety features have been meticulously incorporated into all stages of design and production. The long list starts with a reinforced passenger compartment, plus 'ring-of-steel' roll-over protection. Citroën's energy absorbing side impact protection system, front and rear impact absorbers and high tensile steel beams, all help to transfer the force of an impact, from any direction, safely away from the car's occupants. In addition, a shock-absorbing device on the steering column helps to limit the effects of a frontal impact on the driver's legs.

Every Citroën C5 is equipped with six airbags as standard: adaptive driver's and front passenger's airbags with two levels of activation, two lateral airbags and two side window airbags. Five head restraints and five 3-point inertia reel seat belts are also fitted as standard: the height adjustable front seat belts are fitted with pre-tensioners and force-limiters, whilst the two outer rear seats also have force-limiters and all three can accommodate child seats. Rear door child locks are also standard specification, with their active status clearly indicated on the dashboard.

Security measures too have received a great deal of thought and attention to detail. Features include an advanced engine immobiliser, reinforced high security locks, deadlocks (when locked with plip), an anti-theft alarm (standard on V6 Exclusive) and automatic boot locking that activates as soon as the car reaches 10 kph. The high frequency remote control 'plip' is linked to a number of important functions. For example, if you lock the doors and boot and then accidentally unlock them, they will automatically re-lock after 30 seconds. C5 also has a locating feature for use in busy car parks and the ability to close the windows remotely or to open them slightly for ventilation.



### **CENTRAL LOCKING**

In addition to the high frequency remote control 'plip', a button on the dashboard can also activate and de-activate the central locking without deadlocking the doors.



### **MULTI-FUNCTION 'PLIP' WITH FOLDING IGNITION KEY**

The 'plip' has three buttons: one for locking and also locating the car in a busy car park (the indicators flash and the interior lights are illuminated), one for unlocking the car and one for closing or partially opening the electric windows to ventilate the car (includes Citroën-genuine sunroof where specified).



### **CHILD SAFETY**

Rear door child locks are specified across the range. Their active status is clearly indicated to the driver as soon as the ignition is switched on.





## *smooth, balanced, refined*

### ***Hydractive 3 suspension sets new standards of road-holding and ride comfort***

Auto-adaptive Hydractive 3 suspension is new and unique to Citroën. Combining digital technology with re-designed, simplified hydraulics, it is probably the most advanced suspension system available on any mainstream production car. Hydractive 3 provides the new Citroën C5 with levels of road-holding, ride comfort and handling that are simply outstanding. On some models the system uses a number of electronic sensors to continually monitor the state of the road and to analyse driver input, such as braking, steering and acceleration. This information is relayed to C5's Built-in Hydroelectronic Interface (BHI), which reacts to adjust the suspension's damping rate. With the suspension matched to the road conditions and your driving style, C5 smoothes out a rough road, gives a poised, balanced ride, superb handling and rock-solid road-holding. For drivers who favour a more assertive driving style, a 'Sport' setting on petrol models puts the suspension into performance mode. And Citroën's auto-adaptive engineering brings another mould-breaking innovation to C5: ride height that automatically varies according to the car's speed and the condition of the road. On a good road surface, at freeway speeds (where permitted), C5 lowers its ride height by up to 15mm at the front and 11mm at the rear to improve fuel consumption and further enhance stability. On a poor road surface, travelling more slowly, C5 raises its ride height by up to 13mm to improve road-holding and comfort, and to prevent damage to the underbody of the car.

With the new Citroën C5 every innovation including automatic self levelling, has an exact purpose, and none more so than with Hydractive 3 suspension. This system delivers a uniquely dynamic driving experience that will never fail to surprise and delight. Hydractive 3 is also robust, durable and reliable.

And, as a result, it requires no maintenance for 5 years or 200,000 kms.



#### ***COUNTRY CRUISING***

The new Citroën C5 is supremely smooth and comfortable. Hydractive 3 soaks up the bumps and irons out damaged road surfaces.



#### ***CHOOSE 'COMFORT' OR 'SPORT'***

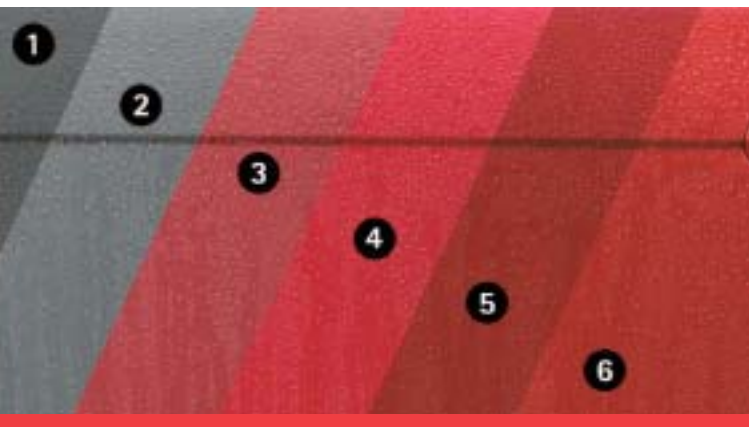
On petrol models, Hydractive 3 can be switched to a 'Sport' setting to promote the suspension's more dynamic driving characteristics.

## *quality, reliability, durability*

### ***The new Citroën C5 offers standards of quality previously only associated with prestige cars***

C5 combines technological sophistication with strength, robustness and reliability. In fact, everything about the new Citroën C5, from the beautifully sleek exterior, to the perfect finish of the interior, down to the smallest component, is designed and built with care, to give a long life of motoring pleasure. The electronic functions are delivered through advanced Multiplex technology. This minimises the cabling and connections around the car, and results in markedly improved reliability. The innovative and simplified design of C5's suspension makes it independent of the braking and power steering systems, benefiting its advanced operating capabilities. And Hydractive 3 requires no maintenance for 5 years or 200,000 kilometres. Throughout the entire design process, Citroën have focused on quality. C5's body is 94% galvanised and engineered to keep its good looks, structural integrity and build quality intact for many years to come. Citroën's complete confidence in C5's durability is reflected in the car's long service intervals (20,000 kms for petrol cars and 15,000 kms for diesels). And to ensure total peace-of-mind, C5 comes with a 12 year anti-corrosion warranty, 3 year paint warranty and a 3 year/60,000 km warranty with roadside assist.

- 1 Steel galvanised on both sides
- 2 Electro zinc plating
- 3 Primer coat
- 4 First coat of paint
- 5 Second coat of paint
- 6 Final lacquer coat



#### **MAINTENANCE INDICATOR**

As soon as the ignition is switched on, a maintenance indicator displays the distance remaining before your car's next service is due.



#### **MULTI-FUNCTION SCREEN**

Multi-function on-board trip computer.

## *performance with care for the environment*

### *Sophisticated technological advances mean C5's engines can reconcile inspirational performance with improved fuel economy and reduced environmental impact*

At the heart of every new Citroën C5 lies a smooth, flexible, advanced engine that provides true driving enjoyment. Citroën's engine technology is complemented with the extensive use of lightweight alloys and aluminium in components such as the bonnet, wheels and rear axle assembly. And as a result, C5 is lighter, has improved fuel economy and produces lower CO<sup>2</sup> emissions than many of its main competitors. Citroën's multi-valve technology offers performance right across the full range of C5's petrol engines. The 2.0 litre 16V 101kW (DIN) engine is joined in the line-up by an all-new 3.0 litre V6 24V 157kW (DIN). Combining power with refinement, agility and improved fuel consumption, you are assured of a thoroughly rewarding drive.

Citroën's high-pressure direct injection diesel engines are widely acknowledged for their performance and fuel economy. On C5, the 2.0 litre HDi 82kW (DIN) engine is available.

C5's precise and easy-to-use manual gearboxes exploit all the engines' potential to the full. Automatic versions feature a tiptronic style auto-adaptive gearbox, which continually adjusts its operating parameters to your driving style and the nature of the road. There are also 'Sport' and 'Ice' settings to tailor the gearbox to your exact needs. For a more dynamic style of driving, the tiptronic style function gives you the option of selecting the gears manually.



*2.0 LITRE HDi 82kW (DIN)*

This new HDi direct injection engine combines outstanding performance and levels of torque with economy and refinement.



## *pure Estate, pure Citroën*

The new C5 Estate, with its graceful and flowing lines, combines elegance and distinctive styling with Citroën's advanced digital technology. And with a vast and uniquely adaptable boot, it brings the concept of the true estate car immediately up-to-date.

Designed independently of the C5 Saloon, it is longer and has an all-new body from the front of the rear doors to the tailgate.

C5 Estate's amazing versatility is underpinned by its advanced digital suspension technology. The automatic self-levelling feature throughout the C5 range ensures a perfectly level and consistent ride, regardless of the load and its position on-board. Even with a boot full of heavy equipment or luggage, the new Citroën C5 Estate remains level, agile and poised at all times.

C5 Estate is powered by a choice of a 2.0 litre 16V petrol engine or 2.0 litre HDi. The petrol delivers torque of 186Nm (DIN) @ 4100 rpm and power of 101kW (DIN) @ 6,000 rpm and the diesel delivers torque of 255 Nm (DIN) @ 1750 rpm and power of 82 kW (DIN) @ 4000 rpm.



## *spacious, comfortable and versatile*

The prerequisite for any estate car is space, a requirement the new Citroën C5 Estate fulfils with ease. Whilst many luxury estates offer you either a roomy cabin *or* a large boot, with C5 Estate you have no reason to compromise. Innovative structural architecture, generous exterior dimensions and a flatter floor pan all combine to give a huge boot and a class-leading cabin for overall spaciousness.

In the front, C5 Estate offers 91cm of headroom and 154cm of elbow-room. The raised position of the front seats gives improved back support and a commanding view of the road. Add to this a driving position that adjusts to fit any shape of driver, and you remain relaxed and in control, even on the longest journeys.

Three rear passengers can also travel in total comfort with 93cm of headroom – a full 7cm more than C5 Saloon. With 152cm of elbow-room, supportive seats and the extra space created by the flatter floor, the rear of C5 Estate is a roomy and relaxing place to be.



### *LEATHER TRIM*

Optional leather pack on SX Saloon or Estate features a wood finish on dashboard console and door panel, leather rim steering wheel, rear carpet mats, leather and aluminium gear shift, illuminated and alloy door threshold at front and electrically adjustable front seats.



## *a vast boot packed with innovations*



You would expect the boot of a Citroën Estate to be big. But lift the tailgate on C5 Estate and, even with three passengers sitting comfortably in the back and the parcel shelf in place, a class-beating 563 litres stretches out in front of you. If the rear seats are folded forward, this load space expands to an enormous total capacity of 1658 litres.

But C5 Estate's boot isn't just large, it's also easy to access and load, as well as being versatile and stylishly appointed. And packed with innovative ideas that make light work of transporting any load.

Hydraulic tailgate struts integrated into the roof mean a totally unrestricted load aperture and an aesthetically neat and clean appearance when accessing the boot. A reversible protective boot mat, keeps the boot carpet in perfect condition with a washable PVC surface on one side. Also a protective boot cargo net stops items sliding around as you corner.

C5 Estate features a combined parcel shelf and retractable boot cover, two covered compartments that enable valuable items to be kept out of sight when the boot cover is open and an alloy sill finisher that protects the leading edge of the boot.

The new Citroën C5 Estate, a true estate designed for the digital age.



**OPENING TAILGATE WINDOW**  
Opening independently, this allows you to place objects in the boot without having to open the tailgate. Particularly useful for small items or when another car parks too close behind you.



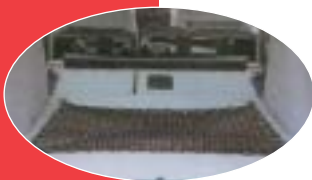
**BOOT SILL HEIGHT ADJUSTMENT**  
A switch situated in the boot allows you to lower and raise the sill height for easier loading, or to attach a trailer. Unique in its class, the sill height can be adjusted from 493mm to 653mm. The sill height automatically returns to the normal driving position before you drive away.



**RETRACTABLE PASSENGER CABIN SAFETY NET (REAR SEATS FOLDED DOWN)**  
This important safety feature prevents objects being thrown forward into the passenger cabin.



**RETRACTABLE PASSENGER CABIN SAFETY NET (REAR SEATS IN PLACE)**  
Attached to the rear seat backs, this can also be used with the seats up and the parcel shelf in place. When not in use, the safety net retracts onto a reel and sits under the rear parcel shelf, out of sight.



**PROTECTIVE BOOT NET**  
A protective boot net stops items sliding around as you corner.

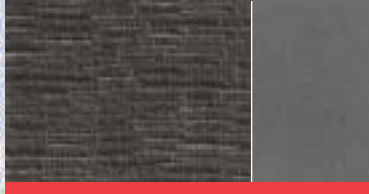
# Make your choice!

## Interior Upholstery

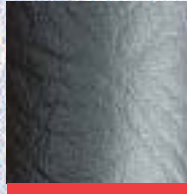
Harmonie Matinale / Otti



Harmonie Grise / Otti



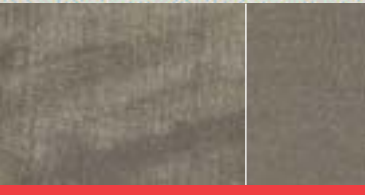
Grise Tempête



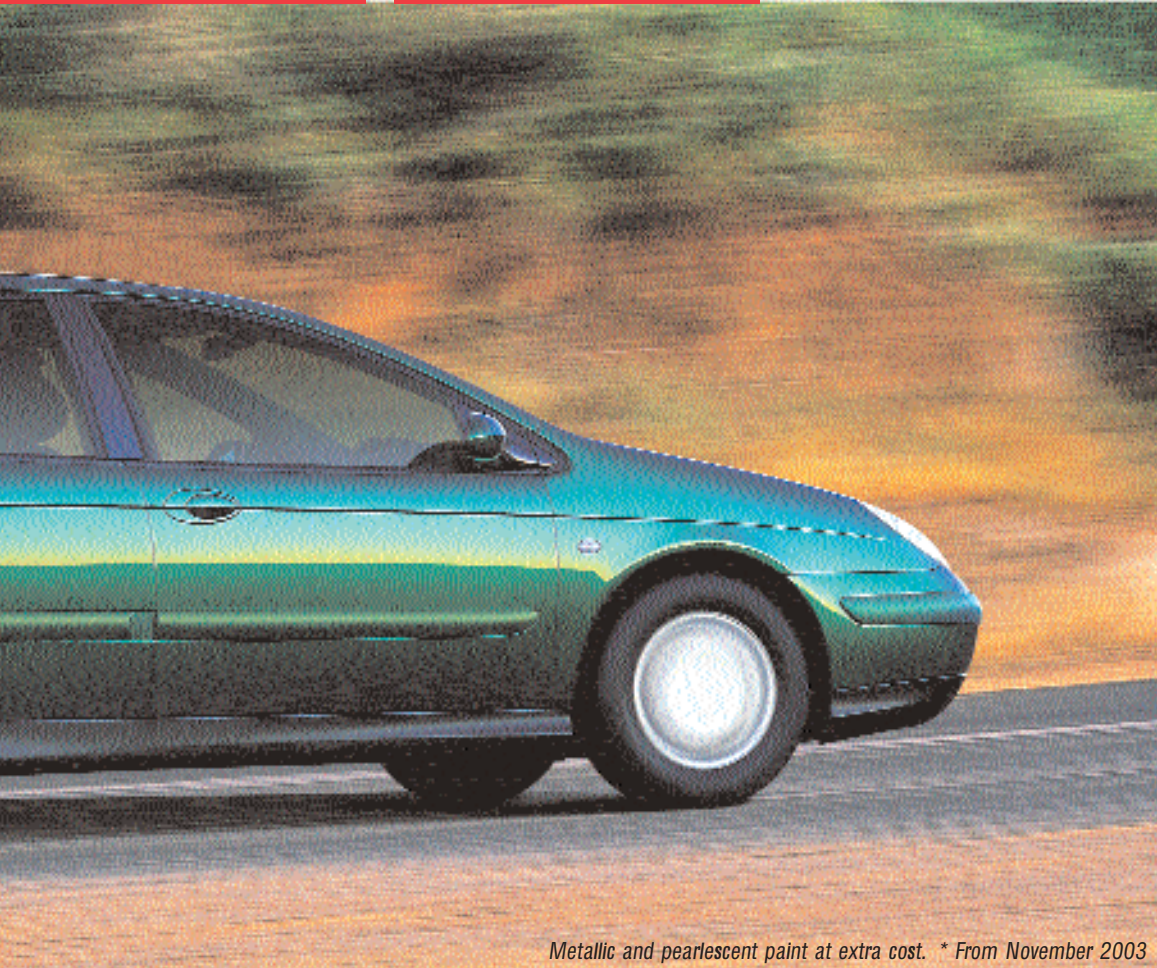
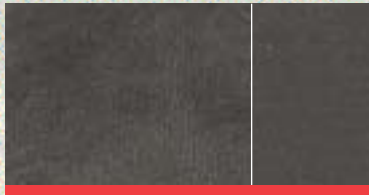
Matinale



Harmonie Matinale / Moara



Harmonie Grise / Moara



Metallic and pearlescent paint at extra cost. \* From November 2003

## Body Colours



Blanc Banquise



Gris Aluminium (Metallic)



Gris Iceland (Metallic)



Eau Limpide (Metallic)



Sable Bivouac (Metallic)



Vert Petitpre (Metallic)



Mauritius Bleu (Pearlescent)



Gris Orageux (Metallic)



Noir Obsidien (Metallic)



Gris Fulminator (Metallic)



Rouge Lucifer (Pearlescent)



**CITROËN**

Citroën imported and distributed by Ateco Automotive, Private Mail Bag 53, St Peters, NSW 2044

Visit: [www.citroen.com.au/c5](http://www.citroen.com.au/c5) All Enquiries: **1800 600 005**

Ateco Automotive Pty Ltd trading as Citroën Australia reserves the right to discontinue or change the models, features, specifications, options, designs and prices of the products referred to in this brochure without incurring any liability whatsoever to any purchaser or prospective purchaser of any such products. Some of the items herein are optional at extra cost. Consult your Citroën Dealer for the latest information on models, specifications, features, prices, options and availability. ABN 34 000 486 706. Print date: August 2003. Part no. BRO C5 II