

1985

CHRYSLER

LEBARON



CHRYSLER LeBARON. RIDING IN STYLE.



Variety is the spice of lifestyles. And there's a 1985 Chrysler LeBaron styled to spice up any life. Because no one offers a wider choice of stylish midsize models in one series than LeBaron.

LeBaron is comfortable in any surroundings, compatible with any lifestyle: the LeBaron four-door sedan...practical, but quietly prestigious; the LeBaron two-door coupe...sporty, but still distinctive; the Town & Country wagon...room for the family, but room for individuality, too; the LeBaron convertible...driving excitement, no buts about it.

LeBaron stands solidly in the center of the Chrysler line, the midsize fulcrum that balances traditional styling with contemporary tastes; its value and success measured by a reputation for quality construction, efficiency and innovative technology.

All models are equipped with Chrysler's TorqueFlite three-speed automatic transaxle. A 2.6-liter Mitsubishi-built engine is standard on Town & Country wagon, and optional on all other models. Also available on all models is a 2.2-liter turbocharged EFI (electronic fuel injection) engine.

Ride in the quality-built comfort of LeBaron. Ride on the technologically advanced efficiency of front-wheel drive. Ride in style.

About this catalog. We have tried to make this catalog as complete as possible. And we hope you will find it useful. However, since the time of printing, some of the information you'll find here may have been updated. Your dealer has details, and you should ask him for current information before ordering.

Some of the equipment shown or described throughout this catalog is available at extra cost.





CHRYSLER IS AN OFFICIAL SPONSOR
OF THE U.S. EQUESTRIAN TEAM

The amateur riders appearing in this catalog do so under written agreement of the U.S. Equestrian Team.

The full line of 1985 Chrysler LeBarons shown in Black Crystal Coat.



Chrysler LeBaron four-door in Garnet Red Pearl Coat with Red vinyl roof.

LeBARON FOUR-DOOR. THE LIFESIZE MIDSIZE.



LeBaron's midsize design wrings out every drop of efficiency...without squeezing the passengers. The technology of front-wheel drive expanded interior space to seat six in comfort. Crisply aerodynamic styling gives LeBaron its smart looks and smoothness.

LeBaron has room for the family, and room for individuality. Distinctive styling touches include a full padded vinyl roof, luxury wheel covers, and a two-spoke color-keyed luxury steering wheel.

Inside, LeBaron offers a touch of plush with its standard folding armrest cloth front bench seat and easy-to-read instrumentation, set off by elegant dark woodtone accents.

More value is available for 1985 in the optional Popular Equipment and Luxury Equipment Discount Packages. Total manufacturer's suggested retail cost of each package (see page 17) is less than the price of the same options purchased separately. The Popular Equipment Discount Package is available on two and four-door models, and convertible. The Luxury Equipment Discount Package is available on all models except convertible.



Chrysler LeBaron two-door two-tone in Gunmetal Blue Pearl Coat/Radiant Silver Crystal Coat.

LeBARON TWO-DOOR. INNOVATIONS ON A THEME.



Sporty distinction is the two-door theme... underscored by innovations in technology, engineering and design.

Nestled between the solidly comfortable high-back cloth bucket seats is a new full-length console, integrating with the padded top instrument panel. The console contains storage areas, removable coin holder, and cup holder (or cassette tape holder if tape deck is ordered).

Engineered for over-the-road smoothness, LeBaron's dual-path Iso-Strut front suspension with linkless antisway bar provides a stable ride. Rear suspension consists of a beam axle with trailing arm, coil springs, and premium shock absorbers. Power-assisted rack-and-pinion steering provides firm-feel steering and sure control. A special sport/handling sus-

pension system is also available and is recommended with the optional 2.2-liter EFI turbo engine.

Value presumes quality. And Chrysler ensures that quality with innovative construction and quality control measures such as these: computers that check materials and components; extensive use of galvanized and pre-coated steels; accurate robotic welding.

And it's all backed by Chrysler Corporation's 5/50 Protection Plan, a limited warranty that extends coverage on power train components, including engine, transaxle, and axle—plus outer panel rust-through protection—for five years or 50,000 miles, whichever comes first. A deductible may apply. Fleet and lease vehicles are excluded. See your dealer for details.



**5/50
WARRANTY APPLIES
U.S.A. ONLY**



Chrysler Town & Country shown in White Crystal Coat with simulated wood trim.

**TOWN & COUNTRY WAGON.
DULY APPOINTED IN THE CHRYSLER TRADITION.**



Room is the reason to buy any wagon. But when roominess is appointed with features that add comfort, convenience and style, the only reasonable choice is the Town & Country wagon.

Room? With rear seat down, Town & Country has 69.6 cubic feet of cargo space. Appointed, of course, with full carpeting, protected by skid strips. The attractive roof luggage rack is standard.

The 2.6-liter MCA-JET Silent Shaft four-cylinder, built by Mitsubishi Motors Corporation, is the standard engine for carting that cargo. Chrysler's own 2.2-liter turbocharged engine with electronic fuel injection is also available, and Chrysler's proven three-speed automatic

smooth-shifting TorqueFlite transaxle is standard.

For more than four decades Town & Country has been a styling leader. The trend continues in 1985 with such stylish touches as simulated woodgrain side paneling, dark woodtone accents on the instrument panel, and comfortable center armrest bench seating.

Technology advances in 1985, too; new heating

(and optional air conditioning) controls allow more precise temperature settings, more driver choices for directing heated or cooled air, and greater control of air velocity. New options include Ultimate Sound system radio and a full-length console integrated with the instrument panel.





Chrysler LeBaron Town & Country convertible shown in White Crystal Coat with simulated wood trim. Chrysler LeBaron convertible shown in Black Crystal Coat.

LeBARON CONVERTIBLES. THE BREEZE AND YOU.



America's love affair with the convertible was rekindled when Chrysler technology made some advances. Aerodynamically styled and electronically updated, 1985 LeBaron continues its advances.

LeBaron offers a choice of power sources: the Chrysler-built 2.2-liter EFI (electronic fuel injection) engine is the dependable standard; available optionally are the Mitsubishi-built 2.6-liter MCA-JET Silent Shaft engine, and Chrysler's 2.2-liter EFI turbocharged engine.

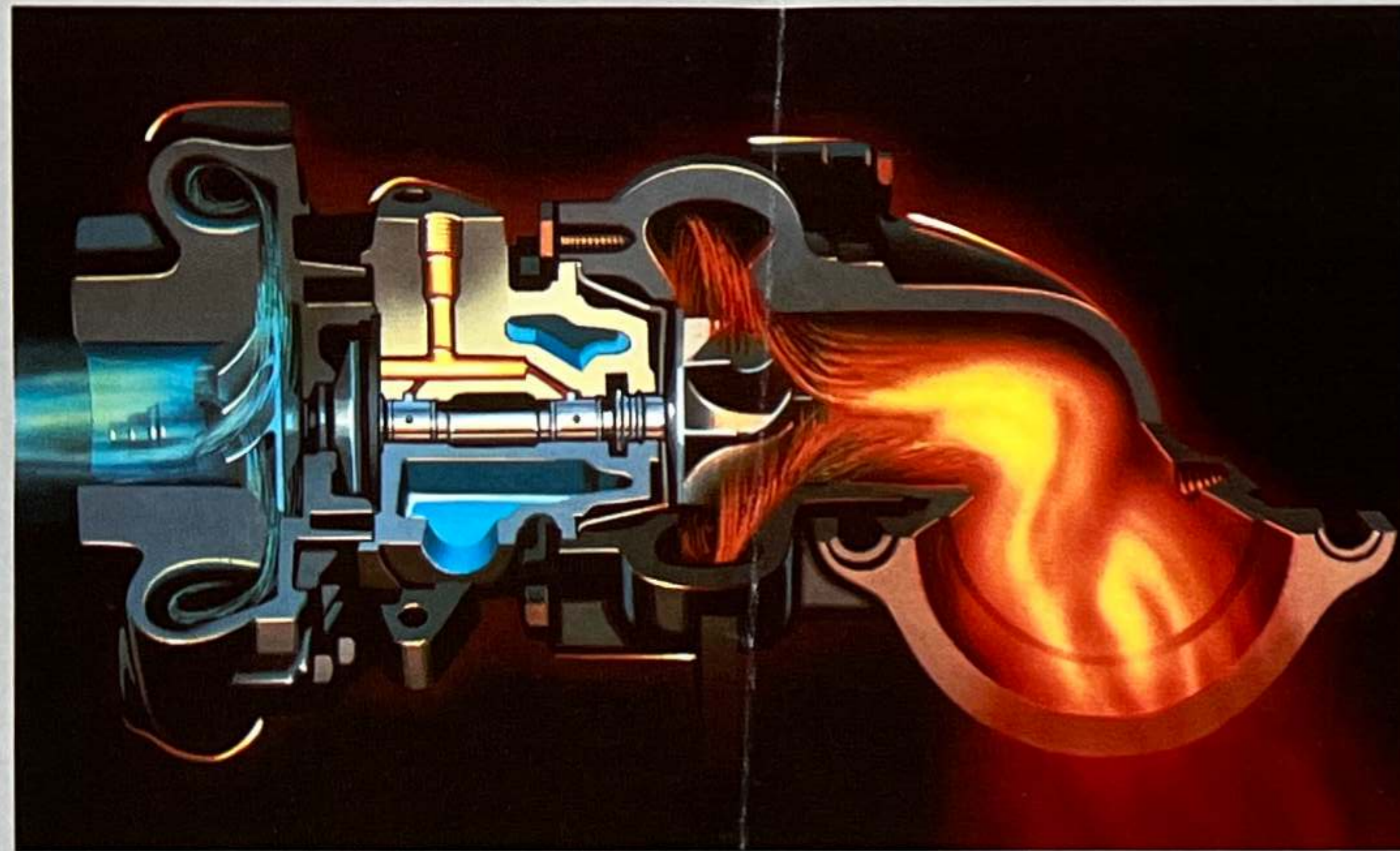
Comfortably sporty low-back vinyl bucket seats are divided by a fixed center armrest and console that houses control switches for the convertible top and power rear quarter windows.*

Convenience touches include power-operated top, rear compartment side lights, tinted glass all around, and aerodynamically designed dual remote control sideview mirrors. All standard.

For the ultimate in breezy style, add the optional Mark Cross Package with such extras as luxurious low-back leather bucket seats and vinyl door trim panels tastefully accented with Mark Cross designer medallions. The package also includes leather-wrapped steering wheel, electronic instrument cluster, Ultimate Sound system radio, and locking wire wheel covers or cast aluminum road wheels.

*When optional power windows are ordered, switches are in driver's door armrest.

TURBOCHARGER. ANOTHER BOOST FROM ENGINEERING.



Available on all LeBaron models for 1985 is the Chrysler-built 2.2-liter overhead cam Trans-4 turbocharged engine with EFI (electronic fuel injection). The turbocharger increases horsepower—a boost of 47 percent over the standard 2.2-liter engine with EFI, for improved performance and increased

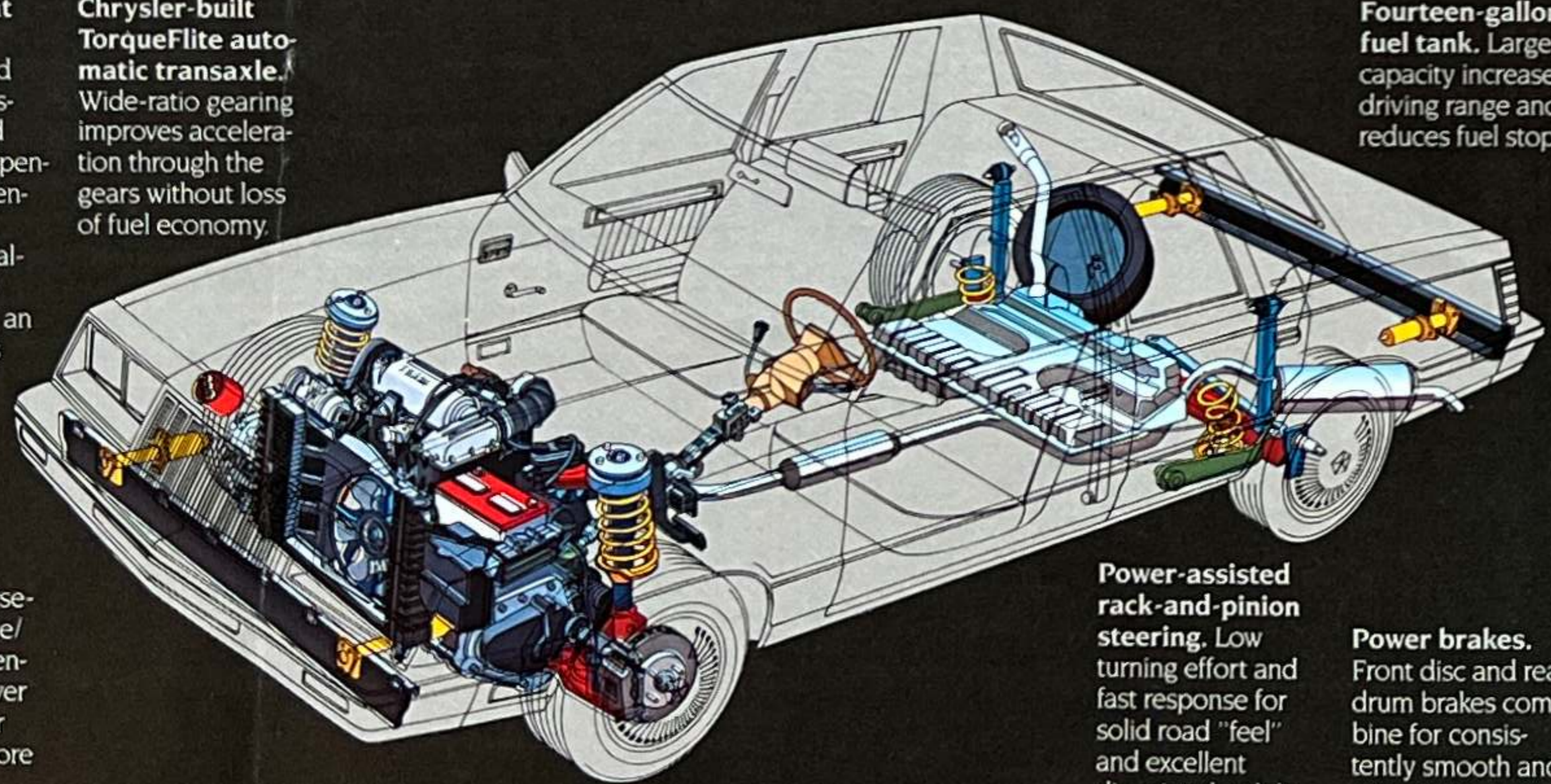
acceleration when passing. The turbocharger (above) features a special water-coolant passage that surrounds the turbine bearing lubrication channel. By controlling the oil temperature in the turbocharger, the extra cooling passage prevents breakdown of the oil.

Chrysler-built 2.2-liter EFI engine. Ninety-nine hp engine with electronic fuel injection that increases efficiency by precise computer control of the fuel/air ratio. **Optional: Chrysler-built 2.2-liter turbocharged multi-point EFI engine** with a turbocharger that boosts power and improves performance and acceleration. **Optional: 2.6-liter MCA-JET engine** built by Mitsubishi Motors Corporation.

Iso-Strut front suspension. Rubber-isolated to prevent transmission of road shocks, the suspension has independent front coil springs and dual-path Iso-Struts combined with an integral linkless antisway bar.

Chrysler-built TorqueFlite automatic transaxle. Wide-ratio gearing improves acceleration through the gears without loss of fuel economy.

Front-wheel drive. Transverse-mounted engine/transaxle concentrates weight over front wheels for stability, and more interior room.



Power-assisted rack-and-pinion steering. Low turning effort and fast response for solid road "feel" and excellent directional stability.

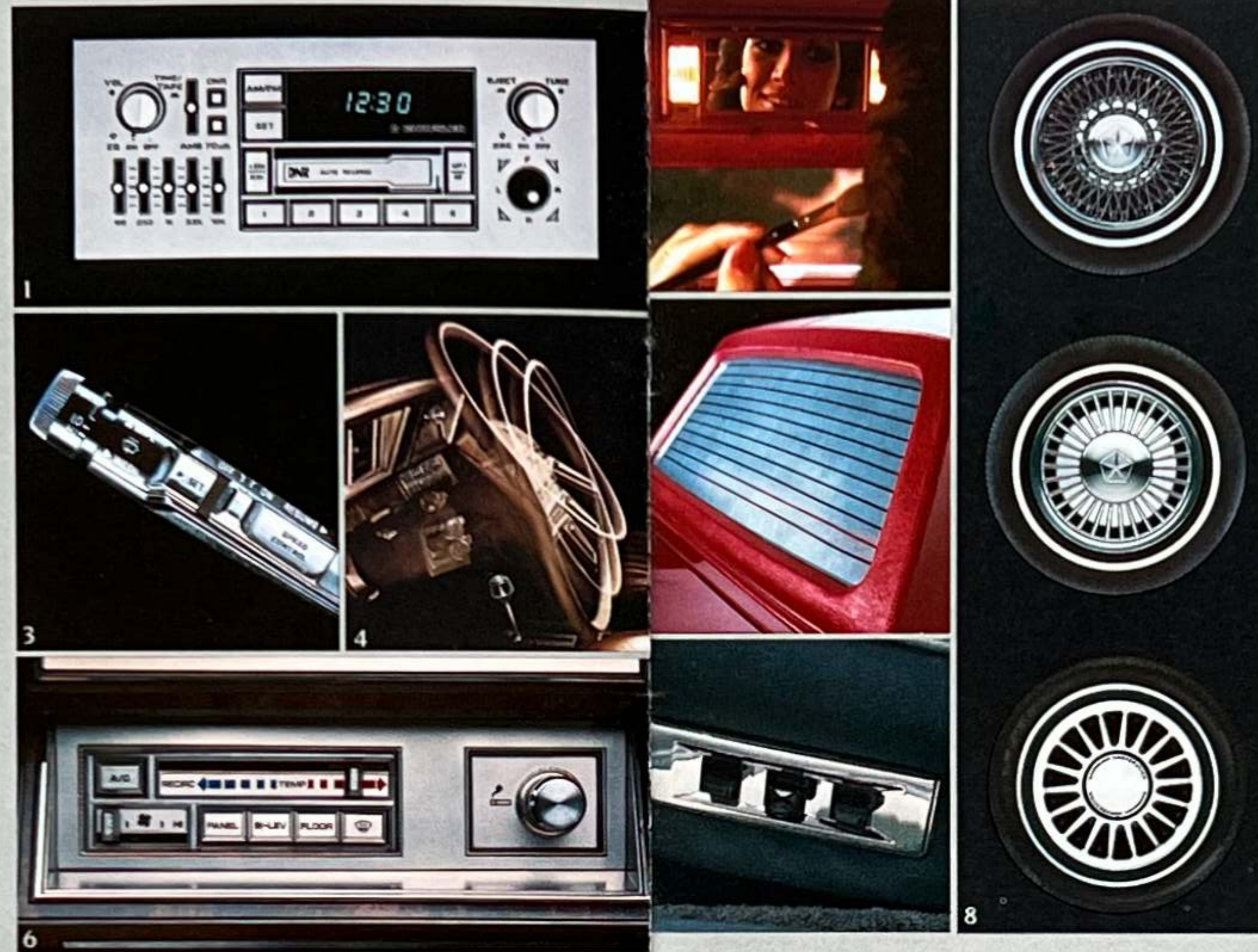
Fourteen-gallon fuel tank. Large capacity increases driving range and reduces fuel stops.

Insulation. Special sound insulation throughout the body and special body/chassis mounting reduce road noise.

Trailing arm rear suspension. Combination of beam axle with trailing arms, coil springs, adjacent shock absorbers, track bar and torsion tube anti-roll control provides a smooth, level ride.

Power brakes. Front disc and rear drum brakes combine for consistently smooth and sure stops.

LeBARON. THE SERIES WITH ALL THOSE OPTIONS.



OPTIONS (pictured)

1. Ultimate Sound System. The 36-watt electronically tuned AM stereo*/FM stereo radio receiver includes memory scan, up-and-down scan, a stereo cassette tape player with automatic reverse and metal tape capability, DNR (Dynamic Noise Reduction)† system and six-speaker sound. The system also features five-channel graphic equalizer, joystick balance/fader control, ambience sound control and an integral digital clock. **2. Illuminated vanity mirror.** Illuminated mirror (on back of passenger sun visor) to add those "finishing touches." **3. Automatic speed control.** Automatically holds the miles per hour selected, helping to improve highway fuel economy. **4. Tilt steering column.** Adjusts to six positions and makes entry and exit easier. **5. Rear window defroster.** Keeps rear window clear electrically. Includes tinted glass on all models. (Not available on convertible.) **6. Air conditioning.** Bi-level ventilation increases air circulation and helps reduce cold spots. New controls provide more precise temperatures and a more varied selection of air direction and velocity. **7. Power seats.** Available on all models with standard front bench seats, and for the driver's seat on models with bucket or 50/50 front seating. **8. Aluminum road wheels or wire wheel covers.** Add a sporty look and feel with aluminum road wheels, or an elegant touch with locking wire wheel covers. Wheel covers are available for all LeBaron models, aluminum wheels are optional on all models except Town & Country wagon.

* Limited AM stereo reception may be experienced in some areas because some AM stereo broadcasting is not compatible with this radio's reception capability.
† DNR (Dynamic Noise Reduction) is a trademark of National Semiconductor Corporation.

Certain models, packages, and options are subject to specific restrictions, requirements, and late availability. Consult your dealer for current ordering information.

STANDARD AND OPTIONAL EQUIPMENT

| | LeBaron Two-Door Coupe | LeBaron Four-Door Sedan | LeBaron Convertible | Town & Country Wagon | | LeBaron Two-Door Coupe | LeBaron Four-Door Sedan | LeBaron Convertible | Town & Country Wagon |
|---|------------------------|-------------------------|---------------------|----------------------|--|------------------------|-------------------------|---------------------|----------------------|
| Acoustic Package | S | S | S | S | Floor Mats—Front and rear accessory: color-keyed | E | E | NA | E |
| Air Conditioning ¹ —With bi-level ventilation | E | E | E | E | Fuel Filler Cap—Tethered | S | S | S | S |
| Alternators— | | | | | Fuel Tank—14-gallon: with curbside fuel filler door | S | S | S | S |
| 90-ampere: 2.2-liter EFI engine | S | S | S | P | Glass—Tinted: all windows | E | E | S | E |
| 75-ampere: 2.6-liter engine only | P | P | P | S | Grille—Vertical: bright | S | S | S | S |
| Armrest— | | | | | Head Restraints—Front right and left: adjustable | P | S | S | S |
| Front: fixed center | NA | NA | S | NA | Headlamp Bezel—Bright | S | S | S | S |
| Front: freestanding center ² | E | E | NA | E | Headlamps—Halogen: rectangular | S | S | S | S |
| Armrests—Door | S | S | S | S | Headliner—Cloth-covered: color-keyed | S | S | NA | S |
| Ash Receivers—Front, rear | S | S | S | S | Heater and Defroster—With upper level ventilation system ³ | S | S | S | S |
| Battery Test Indicator | S | S | S | S | Hood—Counterbalanced | S | S | S | S |
| Batteries— | | | | | Hood Ornament—Pentastar: crystalline | S | S | S | S |
| 335-ampere, maintenance-free: low profile | S | S | S | S | Hood Release—Inside | S | S | S | S |
| 500-ampere, maintenance-free: low profile | E | E | E | E | Horns—Dual | S | S | S | S |
| Brake—Parking: foot-pedal operated | S | S | S | S | Illuminated Entry System | E | E | E | NA |
| Brakes—Power dual diagonal: disc front, self-adjusting drum rear | S | S | S | S | Ignition—Electronic | S | S | S | S |
| Bumper Guards—Front and rear: color-keyed | E | E | E | E | Instrument Panel Applique—Woodtone: dark | S | S | S | S |
| Bumper Protective Rub Strips—Front and rear: bright, with black upper and lower accents | S | S | S | S | Instrument Panel Message Center Cluster—Includes warning lights for low washer fluid, low fuel; trunk, door, or liftgate ajar | S | S | S | S |
| Bumpers—Energy-absorbing: color-keyed soft fascia, with bumper protective rub strips | S | S | S | S | Insulation—Hood: pad | S | S | S | S |
| Cargo Compartment Dress-Up | NA | NA | NA | S | License Plate Bracket—Front: standard where front plate is required | NC | NC | NC | NC |
| Carpet—Passenger compartment: color-keyed | S | S | S | S | Light—Cargo compartment | NA | NA | NA | S |
| Carpet—Trunk floor: charcoal | S | S | S | NA | Light—Courtesy: under instrument panel | NA | NA | S | NA |
| Chimes—Key in ignition, seatbelt unfastened and headlamp on warning | S | S | S | S | Light—Trunk | S | S | S | NA |
| Cigar Lighter | S | S | S | S | Lights—Ash receiver; backup; door-mounted courtesy; front door courtesy light switches; glove box; ignition switch with time delay; parking brake warning; side markers flash with turn signals; reflectors: underhood | S | S | S | S |
| Clock—Electronic digital: integral with all radios | S | S | S | S | Lights—Cornering | E | E | E | NA |
| Coat Hooks | S | S | NA | S | Lights—Dome/reading: front door dome light switches | S | S | NA | S |
| Console—Full-length, includes storage bin with door, ash receiver with door, cup holder ⁴ , coin holder and storage bins | S | E | NA | E | Lights—Rear compartment quarter panel | NA | NA | S | NA |
| Console—Shift lever: includes switches for power top and power rear quarter windows ⁴ | NA | NA | S | NA | Lock—Glove box | S | S | S | S |
| Coolant Overflow Reservoir | S | S | S | S | Lock Cover—Deck lid: with Pentastar | S | S | S | NA |
| Corrosion Protection—Extensive use of galvanized steel, lower bodyside urethane protective coating | S | S | S | S | Locks—Door: power | E | E | E | E |
| Deck Lid Release—Power (liftgate on wagon) | E | E | E | E | Luggage Rack—Roof | NA | NA | NA | S |
| Defroster—Rear window: electric: includes tinted rear glass, 400-amp maintenance-free battery (required on all sedans registered in New York state) | E | E | E | E | Mirror—Interior passenger side visor vanity: illuminated | E | E | NA | E |
| Door Release Handle—Exterior: bright | S | S | S | S | Mirror—Interior rearview: day/night | S | S | S | S |
| Door Release Handle—Interior: easy-open, with integral rocker-type lock/unlock system | S | S | S | S | Mirrors—Exterior dual left remote control; right manual: bright aero style | S | S | NA | S |
| Emissions Controls—California (required at extra cost on all vehicles registered in California) | E | E | E | E | Mirrors—Exterior dual power adjustable: chrome, aero style | E | E | NA | E |
| Engines—See Engine and Transaxle Chart | | | | | Mirrors—Exterior dual remote control: color-keyed aero style | NA | NA | S | NA |
| Floor Mats—Front accessory: color-keyed | NA | NA | E | NA | Molding—Belt: bright | S | S | S | S |
| | | | | | Molding—Roof surround: color-keyed vinyl | S | S | NA | NA |
| | | | | | Moldings—Bodyside applique and surround: woodgrain | NA | NA | E | S |
| | | | | | Moldings—Deck lid: partial bodyside with integral side markers (black upper and lower accents); sill (narrow); wheel opening (full): bright | S | S | S | NA |

INTERIOR TRIM

Available on the LeBaron convertible with optional Mark Cross Edition Convertible Package only: • Leather-and-vinyl low-back bucket seats with adjustable head restraints, reclining seatbacks, and shift lever console with freestanding center armrest • Matching leather rear bench seat • Boot color matches interior trim • Available in Charcoal/Silver, Light/Medium Tan.



Standard on the LeBaron convertible: • All-vinyl low-back bucket seats with adjustable head restraints, reclining seatbacks, and shift lever console with free-standing center armrest • Matching rear bench seat • Boot color matches interior trim • Available in Red, Red/White, Tan.



Optional on LeBaron two-door coupe. Standard on LeBaron four-door sedan: • Cloth-and-vinyl split-back bench front seat with folding center armrest and adjustable head restraints • Front and rear bench seats available in Blue, Brown, Charcoal, Red, Tan.



Standard on LeBaron two-door coupe. Optional on LeBaron four-door sedan: • Cloth-and-vinyl high-back front bucket seats with integral head restraints and reclining seatbacks. Optional freestanding folding armrest is shown • A full-length console is included on the two-door coupe and optional on the four-door sedan • Front bucket seats and rear bench seat available in Blue, Brown, Charcoal, Red, Tan.



Available on the Town & Country wagon as a no-charge option: • All-vinyl low-back front bucket seats with adjustable head restraints and reclining seatbacks • Optional free-standing folding center armrest is shown • A full-length console is also available at extra cost • Front bucket seats and rear bench seat available in Red, Tan.



Standard on the Town & Country wagon: • Cloth-and-vinyl split-back front bench seat with folding center armrest and adjustable head restraints • Front and rear bench seats available in Brown, Red, Tan.



Not shown but available on LeBaron two-door coupe and four-door sedan with optional Mark Cross Package only: • Leather-and-vinyl 50/50 individually adjustable front seats with adjustable head restraints, dual folding center armrests, and reclining seatbacks • Seat-mounted center console contains seat controls and storage bins • Both front seatbacks have rear pockets • Front bucket seats and rear bench seat available in Charcoal/Silver, Light/Medium Tan.

Not shown but available on Town & Country wagon with optional Mark Cross Package only: • Leather-and-vinyl 50/50 individually adjustable front seats with adjustable head restraints, folding center armrest, and reclining seatbacks • Seat-mounted center console contains seat controls and storage bins • Both front seatbacks have rear pockets • Front seats and rear bench seat available in Light/Medium Tan only.

STANDARD AND OPTIONAL EQUIPMENT (continued)

| | LeBaron Two-Door Coupe | LeBaron Four-Door Sedan | LeBaron Convertible | Town & Country Wagon | LeBaron Two-Door Coupe | LeBaron Four-Door Sedan | LeBaron Convertible | Town & Country Wagon | LeBaron Two-Door Coupe | LeBaron Four-Door Sedan | LeBaron Convertible | Town & Country Wagon |
|---|------------------------|-------------------------|---------------------|----------------------|------------------------|-------------------------|---------------------|----------------------|------------------------|-------------------------|---------------------|----------------------|
| Moldings—Drip rail; upper door frame (narrow); windshield: bright | S | S | NA | S | NA | S | NA | NA | E | E | E | NA |
| Multifunction Steering Column Lever—Includes switches for windshield wipers/washers, headlamp dimmer, turn signals, lane change feature, optical horn | S | S | S | S | S | NA | NA | NA | S | S | S | S |
| Nameplate—"Chrysler" on deck lid, or tailgate, left side: bright | S | S | S | S | E | E | E | E | E | E | E | E |
| Nameplate—"LeBaron" on deck lid, right side: bright | S | S | S | NA | S | S | S | NA | S | S | S | NA |
| Radios— | | | | | | | | | | | | |
| AM: electronic tuning; integral digital clock | S | S | S | S | S | S | S | S | S | S | S | S |
| AM/FM stereo: electronic tuning; integral digital clock | E | E | E | E | P | P | P | S | S | S | S | S |
| AM stereo ⁶ /FM stereo, premium: electronic tuning; Seek-and-Scan; cassette player; ³ automatic reverse; Dynamic Noise Reduction (DNR); ⁷ six-speaker sound; integral digital clock | E | E | E | E | S | S | S | S | S | S | S | S |
| AM stereo ⁶ /FM stereo 36-watt Ultimate Sound: electronic tuning; memory scan; up-and-down scan; cassette player; ³ automatic reverse, metal tape capability; Dynamic Noise Reduction (DNR); ⁷ joystick balance/fader control; five-channel graphic equalizer; ambience sound control; six-speaker sound; integral digital clock | E | E | E | E | E | E | E | E | E | E | E | E |
| Radio Delete—Standard AM radio may be deleted for credit on factory orders | CO | CO | CO | CO | NA | NA | NA | S | NA | NA | NA | NA |
| Restraint System—Unibelt, deluxe: with tension reliever and automatic release: color-keyed | S | S | S | S | S | S | S | S | S | S | S | S |
| Roof—Full: padded vinyl with color-keyed surround moldings | NA | S | NA | NA | S | NA | NA | NA | S | NA | NA | NA |
| Roof—Landau: padded vinyl with color-keyed surround moldings | S | NA | NA | NA | E | E | E | E | S | S | S | S |
| Speed Control—Automatic | E | E | E | E | S | S | S | S | E | E | E | E |
| Steering—Power: rack-and-pinion | S | S | S | S | E | E | E | E | S | S | S | S |
| Steering Column—Color-keyed | S | S | S | S | S | S | S | S | S | S | S | S |
| Steering Column—Tilt | E | E | E | E | S | S | S | S | S | S | S | NA |
| Steering Wheel—Luxury two-spoke: color-keyed | S | S | S | S | E | E | E | E | S | S | S | S |
| Steering Wheel—Luxury two-spoke: leather-wrapped | E | E | E | E | S | S | S | NA | S | S | S | NA |
| Stripes—Accent: upper bodyside | S | S | S | NA | S | S | S | NA | S | S | S | NA |
| Sun Visors—Driver and passenger sides (storage pocket on driver's side of convertible) | S | S | S | S | S | S | S | S | S | S | S | S |
| Suspension—Front: antisway bar; large diameter | P | P | P | S | S | S | S | S | S | S | S | S |
| Suspension—Front: dual-path Iso-Strut with coil springs around the shock absorbers, linkless antisway bar; rear: beam axle with trailing flex arm, coil springs and shock absorbers | S | S | S | S | S | S | S | S | S | S | S | S |
| Suspension—Sport handling: includes larger diameter front and rear antisway bars; higher control shocks; firm-feel quick-ratio power steering | E | E | E | E | S | S | S | S | S | S | S | S |
| Taillamps—Wraparound: bright accents | S | S | S | S | E | E | E | E | S | S | S | S |
| Tire—Spare: conventional | E | E | E | E | S | S | S | S | S | S | S | S |
| Tire—Spare: high pressure, low-mileage | S | S | S | S | S | S | S | S | S | S | S | S |
| Tire Tread Life Wear Indicators | S | S | S | S | S | S | S | S | S | S | S | S |
| Tires—P185/70R14 steel-belted radial narrow white sidewalls | S | S | S | S | S | S | S | S | S | S | S | S |
| Tonneau Cover—Cargo compartment (color-keyed) | NA | NA | NA | S | NA | NA | NA | S | NA | NA | NA | NA |
| Top—Convertible: power | NA | NA | S | NA | S | S | S | S | S | S | S | S |
| Transaxle—TorqueFlite three-speed: automatic | S | S | S | S | S | S | S | S | S | S | S | S |
| Trunk Dress-Up | E | E | E | NA | S | S | S | S | S | S | S | S |
| Undercoating | E | E | E | E | S | S | S | S | S | S | S | S |
| Voltage Regulator—Electronic | S | S | S | S | S | S | S | S | S | S | S | S |
| Warning Chimes | S | S | S | S | S | S | S | S | S | S | S | S |
| Wheel Covers—Luxury | S | S | S | S | E | E | E | E | E | E | E | E |
| Wheel Covers—Wire; locking | E | E | E | E | E | E | E | E | E | E | E | E |
| Wheels—Cast aluminum: 14-inch | E | E | E | NA | E | E | E | NA | E | E | E | NA |
| Windows—Power | E | E | E | E | E | E | E | E | E | E | E | E |
| Windshield Wiper/Washer—Liftgate | NA | NA | NA | S | NA | NA | NA | S | NA | NA | NA | S |
| Windshield Wipers/Washers—Deluxe: concealed; intermittent wipe feature | S | S | S | S | S | S | S | S | S | S | S | S |

S—Standard E—Extra cost CO—Credit option. NA—Not available P—Package only.

¹There are special cooling requirements for field-installed air conditioning. Failure to follow these requirements may invalidate warranty. See your dealer for full details.

²Includes storage bin on four-door and wagon models without optional full-length console.

³Cassette tape storage bin (spring-loaded) replaces cup holder in full-length center console with this option.

⁴Rear quarter window switches are located in the driver's door armrest when full power windows are ordered.

⁵Includes four instrument panel outlets and lower Ram Air outlets.

⁶Limited AM stereo reception may be experienced in some areas because some AM stereo broadcasting is not compatible with this radio's reception capability.

⁷DNR (Dynamic Noise Reduction) is a trademark of National Semiconductor Corporation.

⁸Power rear quarter windows are standard on convertible.

PACKAGES AND ACCESSORY GROUPS

| | LeBaron Two-Door Coupe | LeBaron Four-Door Sedan | LeBaron Convertible | Town & Country Wagon |
|--|------------------------|-------------------------|---------------------|----------------------|
| Popular Equipment Package | E | E | E | NA |
| Luxury Equipment Discount Package | E | E | NA | E |
| Town & Country Package | NA | NA | E | NA |
| Two-Tone Paint Package | E | E | NA | NA |
| Mark Cross Package | E | E | NA | E |
| Mark Cross Edition Convertible Package | NA | NA | E | NA |

E—Extra cost NA—Not available.

ENGINES AND TRANSAXLES¹

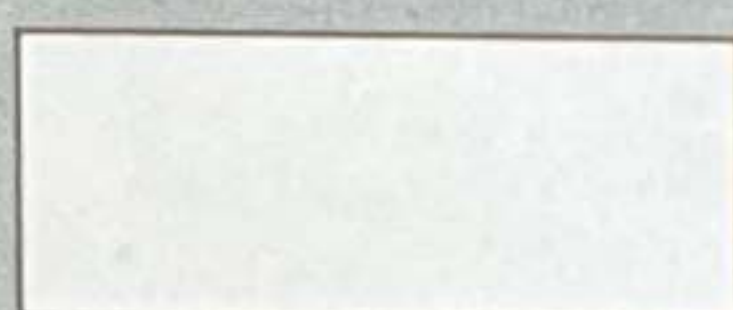
| Type | Displacement | Bore & Stroke | Compression Ratio | Horsepower | | Torque | | Transaxle Availability |
|---|----------------------------------|---------------|-------------------|--------------------|-----------------------|--|--|------------------------|
| | | | | SAE Net @ RPM | | @ RPM | | |
| 4-Cylinder OHC EFI (standard on all models except wagon) | 2.2-liter (135 CID) | 3.44" x 3.62" | 9.0:1 | 99 hp @ 5,600 rpm | 121 ft-lb @ 3,200 rpm | Standard—3-Speed Automatic (3.02 OTGR) | | |
| 4-Cylinder OHC (standard on wagon; optional on two-door, four-door and convertible) | 2.6-liter (156 CID) ² | 3.59" x 3.86" | 8.7:1 | 101 hp @ 4,800 rpm | 140 ft-lb @ 2,800 rpm | Standard—3-Speed Automatic (3.02 OTGR) | | |
| 4-Cylinder OHC Turbocharged EFI (optional on all models) ³ | 2.2-liter (135 CID) | 3.44" x 3.62" | 8.1:1 | 146 hp @ 5,200 rpm | 168 ft-lb @ 3,600 rpm | Standard—3-Speed Automatic (3.02 OTGR) | | |

OTGR—Overall top gear ratio. ¹Emissions controls required at extra cost on all vehicles registered in California—not available otherwise. ²Manufactured by Mitsubishi Motors Corporation. ³Turbocharged engine includes dress-up, functional hood louvers, bright exhaust tip, Turbo identification, stainless steel exhaust system and multipoint fuel injection. Premium unleaded fuel recommended. Turbocharged engine not recommended for trailer towing.

LeBARON EXTERIOR COLORS



Garnet Red Pearl Coat



White Crystal Coat



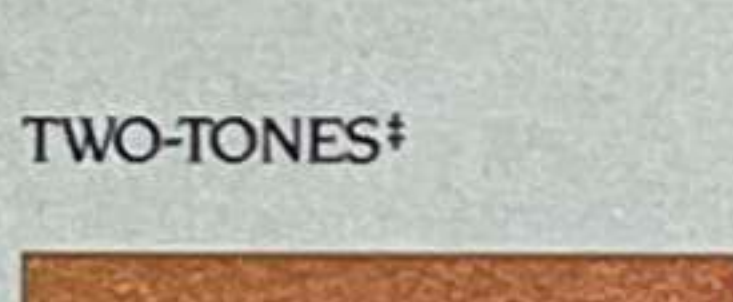
Mink Brown Pearl Coat*



Nightwatch Blue Crystal Coat[†]



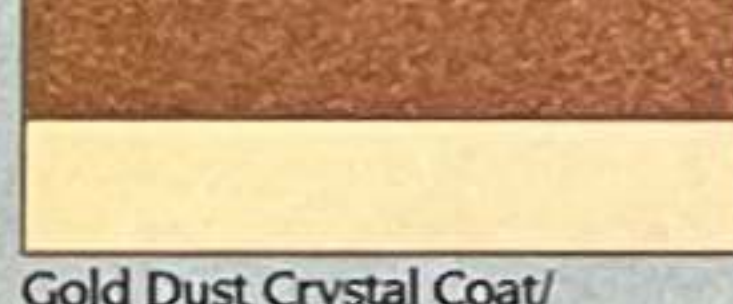
Gold Dust Crystal Coat



TWO-TONES[‡]



Cream Crystal Coat



Gold Dust Crystal Coat/
Cream Crystal Coat



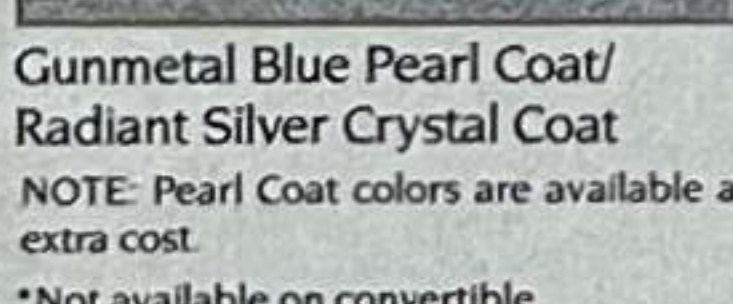
Gunmetal Blue Pearl Coat[†]



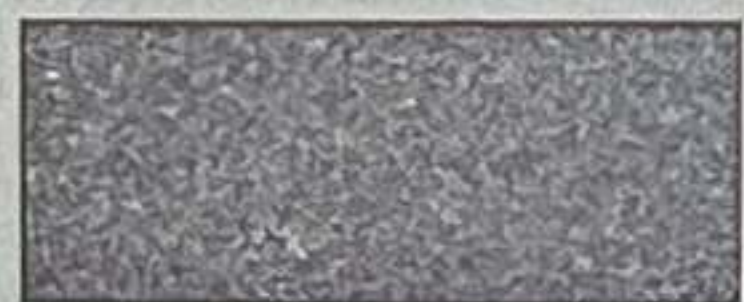
Gunmetal Blue Pearl Coat/
Radiant Silver Crystal Coat



Ice Blue Crystal Coat[‡]



Black Crystal Coat



Radiant Silver Crystal Coat

NOTE: Pearl Coat colors are available at extra cost.

*Not available on convertible.

[†]Not available on wagon.

[‡]Not available on convertible or wagon.

[§]Available on wagon only.

Note: Due to occasional printing irregularities, the colors shown may vary slightly from actual hues. See your Chrysler dealer for accurate color chips.

STANDARD SAFETY FEATURES

• Safety-Rim wheels • Combination lap/shoulder belts for the driver and right front passenger; lap belts for all other passengers • Seat belt reminder system • Energy ab-

sorbing steering wheel • Dual braking system with separate brake fluid reservoirs in the master cylinder • Brake fluid pressure loss warning light (also serves as indicator when parking brake is applied) • Hazard warning flasher system • Turn signals with lane-change feature • Electronic ignition • Backup lights • Energy absorbing sun visors • Front seat head restraints • Energy absorbing front seatbacks • Inside and outside rearview mirrors • Side marker lights and reflectors • Seatback latches on folding front seats • Fade resistant front disc brakes • Electric windshield washers and wipers • Anti-theft ignition and steering column lock • Headlamp and wiper circuit breakers with automatic reset • Key-left-in-ignition warning • Nonoverride door locks (except driver's door) • Resilient window crank knobs • Side door beams • Dual throttle return springs • Interlocking door latches • Recessed inside door release handles • Rotary glove box latch • Reinforced windshield header and roof • Glare reduction measures for windshield wipers, instrument panel, and steering wheel • Double ball-joint rearview mirror mount

OPTIONAL PACKAGES

POPULAR EQUIPMENT DISCOUNT PACKAGES (Not available on wagons)

• Electric rear window defroster* • Power door locks[†] • Tinted glass, all windows • Power windows[†] • AM/FM stereo radio, electronically tuned; integral digital clock[‡] • Power seat[†] • Trunk dress-up • Wire wheel covers[†] • Automatic speed control • Tilt steering column

*Not available on convertible.

[†]Convertible only.

[‡]May be upgraded.

LUXURY EQUIPMENT DISCOUNT PACKAGE

(Not available on convertible)

• Electric rear window defroster • Tinted glass, all windows • AM/FM stereo radio, electronically tuned; integral digital clock* • Trunk dress-up[†] • Automatic speed control • Tilt steering column • Power windows • Wire wheel covers • Power door locks • Power seats • Chrome aero-styled dual power remote control outside mirrors • Power liftgate release[‡]

*May be upgraded.

[†]Not available on wagons.

[‡]Wagon only.

TOWN & COUNTRY PACKAGE^{*}

(Convertible only)

• Simulated white ash moldings and high gloss marine teak applique on bodysides[†] • Deck lid luggage rack[†]

*Mark Cross Package required. Bodyside stripes, wheel opening and sill moldings are deleted with this package.

[†]Available in package only.

TWO-TONE PAINT PACKAGE

(Two-door and four-door only)

• Two-tone paint with accent tape stripes (vinyl roof color matches lower paint color)

MARK CROSS PACKAGE

(Not available on convertible)

• 50/50 leather-and-vinyl seats with dual armrests,* and seat-mounted center console/leaves containing recliner controls* • Seatback pockets* • Vinyl door trim panels with piped flexan inserts; Mark Cross medallions on front door trim panels* • Leather-wrapped luxury steering wheel

*Available in package only.

NOTE: No package component upgrading is permitted.

MARK CROSS EDITION CONVERTIBLE PACKAGE (Convertible only)

• Low-back leather-and-vinyl bucket seats* • Power driver's seat • Vinyl door trim panels with flexan inserts; Mark Cross

DIMENSIONS, WEIGHT AND CAPACITY

| | Two-Door Coupe | Four-Door Sedan | Convertible | Town & Country Wagon |
|--------------------------|----------------|-----------------|-------------|----------------------|
| Length (in.) | 179.8 | 179.8 | 179.8 | 179.8 |
| Width (in.) | 67.9 | 67.9 | 67.9 | 67.9 |
| Height (in.) | 52.6 | 52.9 | 53.7 | 53.3 |
| Wheelbase (in.) | 100.3 | 100.3 | 100.3 | 100.3 |
| Turning Diameter (ft.) | 34.8 | 34.8 | 34.8 | 34.8 |
| Curb Weight (est.: lbs.) | 2,533 | 2,559 | 2,616 | 2,721 |
| Cargo Capacity (cu ft.) | 15.0 | 15.0 | 13.1 | 69.2 |
| with rear seatback up | — | — | — | 35.7 |
| with rear seatback down | — | — | — | 67.1 |
| Passenger Capacity | 5 | 6 | 5 | 6 |
| Fuel Capacity (gal.) | 14.0 | 14.0 | 14.0 | 14.0 |

medallions on front door trim panels* • AM stereo[†]/FM stereo Ultimate Sound radio and cassette player • Leather-wrapped luxury steering wheel • Bumper guards, front and rear • Cornering lamps • Wire wheel covers with locks (four)[†] • Accessory floor mats, carpeted (front) • Electronic instrument panel cluster*[†] • Tilt steering column • Trunk dress-up • Air conditioning • 2.6-liter four-cylinder engine (manufactured by Mitsubishi Motors Corporation)[§] • 75-ampere alternator • Power windows (power quarter windows are standard) • Power deck lid release • Power door locks • Automatic speed control • Illuminated Entry System

*Available in package only.

[†]Limited AM stereo reception may be experienced in some areas because some AM stereo broadcasting is not compatible with this radio's reception capability.

[‡]Fourteen-inch cast aluminum road wheels may be substituted at no extra charge.

[§]Includes: electronic speedometer; voltmeter; odometer and trip odometer; electronic gauges for oil, fuel and temperature with gauge alert system; multi-color Car Graphic Message Center with low washer fluid, trunk-ajar and door-ajar warning indicators.

[¶]2.2-liter turbocharged four-cylinder engine may be substituted for 2.6-liter engine at extra cost.

OPTIONAL 5/50 SERVICE CONTRACT COVERAGE

Chrysler Service Contracts provide you with additional peace of mind protection for your new

vehicle. Coverage starts on the specified components after your vehicle's basic warranty expires and continues for five years or 50,000 miles (whichever occurs first) from the original warranty start date. A deductible applies.

Allowances for car rental and towing are also included. Ask your dealer for details. Buckle up for safety.

CONSIDER LEASING

In these days of tight money and high interest rates more consumers are considering leasing as an alternative to buying. Leasing a new Chrysler LeBaron usually involves a small security deposit and a first month's lease payment. Monthly payments are usually less than financing a new car purchase. Ask your dealer for details.

All product illustrations and specifications are based on authorized information. Although descriptions are believed correct at publication approval, accuracy cannot be guaranteed. Chrysler Corporation reserves the right to make changes from time to time, without notice or obligation, in prices, specifications, colors and materials, and to change or discontinue models. See your dealer for the latest information.

5/50
WARRANTY APPLIES
U.S.A. ONLY

CHRYSLER CORPORATION'S PROTECTION PLAN



CHRYSLER
CORPORATION



At Chrysler we have one and only one ambition: To be the best!
What else is there?

That's why we helped convert a smokestack industry into a high tech industry with robotics, lasers and highly advanced computers. And that's why, today, we are building high mileage, front-wheel drive products with outstanding quality. As a result, we have led the American automobile industry with unprecedented warranty coverage. We have proved that "Made in America" means something again.

Chrysler has made major strides in quality which have resulted in a total commitment to stand behind our products. No manufacturer has the right to ask people to buy its products unless it has the confidence to back them. Chrysler has made a unique promise: To back every Chrysler we build for five years or 50,000 miles on engine, drive train and outer body rust-through. Nobody else has made that promise.

Today every man and woman at Chrysler has a commitment—a commitment to build the best cars and trucks in the world. Quality. Hard work. Commitment. This is the stuff America is made of. And this is the stuff Chrysler is made of.

Lee A. Iacocca

CHRYSLER CORPORATION. WE DON'T WANT TO BE THE BIGGEST, JUST THE BEST.

5/50
WARRANTY APPLIES
U.S.A. ONLY