



no boundaries

03 ESCAPE



- Limited
- XLT Appearance Package
- XLT Sport
- Comfort
- Features
- Safety/Control
- Specifications
- Engines
- Paint/Trim



Escape Limited in Gold Ash Metallic.



NEW ESCAPE LIMITED

Because you never know where your travels may take you, it's best to be behind the wheel of the new Escape Limited. Cruise with standard comforts uncommon to most SUVs in the class – things like rich, premium leather seating surfaces, side-impact airbags,* an auto-dimming rearview mirror, automatic headlamps, sunvisors with illuminated mirrors, and the MACH® 6-disc in-dash CD player with automatic volume control.

Whether you're pulling up to a midtown club or dashing to the dry cleaners, you'll be proud of Escape Limited's sleek, monochromatic appearance and unique 16" bright machined-aluminum wheels.

- 1 Snow, ice... any of the elements that want to mess with Escape Limited's visibility are thwarted with the handy **power, heated outside mirrors**.
- 2 One of the unexpected standards in the new Escape Limited is the **reverse sensing system**. It alerts the driver, through a series of beeps, to the presence of certain objects behind the vehicle.
- 3 Limited is all about cozy conveniences. And what could be cozier than **heated driver and front passenger seats**? Standard on Escape Limited.

*Always wear your safety belt and secure children in the rear seat.



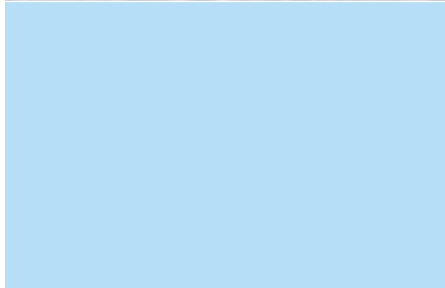
Escape XLT Premium in Black. Shown with optional Appearance Package.

NEW ESCAPE XLT APPEARANCE PACKAGE

With all it's got going on, it's hard to imagine how you could improve upon XLT Premium. Here's a thought: add the available new XLT Appearance Package and Escape's head-turning good looks are elevated to a whole new level. It starts with hot-looking, painted Dark Shadow Grey lower bodyside cladding, bumpers, wheel-lip moldings and side step bars. It wraps up with unique 16" wheels that really set this XLT apart. With this bold new look, Escape XLT Premium with the Appearance Package is all attitude.



Escape XLT Sport in Chrome Yellow.



1



2

ESCAPE XLT SPORT

Wide-open spaces. Some dream of them, some go find them. For the latter, there is Escape XLT Sport, a vehicle with the power to get you out past the pavement and into a whole new frame of mind. Drive around with the confidence that comes from the 201 hp Duratec V6 engine and capable Control Trac® II 4x4 system.

XLT Sport's long list of standard features look good and work hard – things like step bars, 16" sport aluminum wheels with all-terrain treads that really grab the road, the innovative No Boundaries™ Rack System, color-keyed front and rear floor mats, and even a Class II trailer towing package.

- 1 With Escape XLT Sport, you'll always have the freedom of choice to take off, without leaving anything behind. The ingenious **No Boundaries™ Rack System** gives you all the capability you could want. On top of the roof, the rack has adjustable cross-bars that support up to 100 lbs. of gear.
- 2 Need more space? Simply unlock the rack, pull it down, and the rack snaps into position over the liftgate to accommodate yet **another 100 lbs. of gear**. And check this out: you can carry gear on both racks at the same time. So load up.



Escape XLT Premium with Medium/Dark Flint leather seating surfaces. Shown with optional side-impact airbags.



INNER COMFORT

What is an SUV?

Sport? That means fun, we understand that. Utility? Got it, very functional. Vehicle? Well, that's obvious. So where does comfort fit in? Apparently, it's all inside Escape. Low-back bucket seats with adjustable head restraints let front passengers settle right in. Rear passengers can stretch out with a fold-flat bench seat that's even split 60/40 in XLT and Limited models. Standards include air conditioning with rear floor heat ducts, power windows, power door locks with remote keyless entry, and privacy glass (XLS Sport, XLT and Limited). Choose the Leather Comfort Group and you'll get leather seating surfaces, a leather-wrapped steering wheel, and an overhead console with dual storage bins. Now *that's* comfy.

INTERIOR FEATURES

- 1 One of the many fabulous standard features of Escape Limited is this **6-disc in-dash MACH® Audio System** with automatic volume control. It kicks out amazing sound from seven well-placed speakers.
- 2 Starlight or sunshine, you'll never have to miss it with this available **power moonroof**. Either tilt it open, retract it completely, or take advantage of the interior shade and tinted glass. You're in control.
- 3 Enjoy the stellar sound of the **MACH® MP3 Music System**. It spins conventional CDs, MP3s and mixed-mode discs. You can play up to 253 songs with about 10 hours of play on one disc. Standard on Escape XLS Sport.
- 4 You'll feel more secure knowing your gear is concealed under this **retractable, heavy-duty vinyl cargo cover**. Offered as an option on XLS and standard on XLT and Limited, it matches your interior and helps maintain a clean look in back.
- 5 With two choices, it's easy to stow your cargo in back. Slip small stuff in through the **liftglass**, or open the liftgate for larger items.
- 6 Not only will you and your passengers enjoy a comfortable, roomy interior, you'll also have lots of space for gear in back. With the rear seats up, there is 33.1 cu. ft. of cargo space. Fold them down, and a **generous 64.8 cu. ft.** is available.



SAFETY & SECURITY

Escape's long list of features practically guarantees a good time. But you also want to feel safe and secure. With **19 out of 20 stars for crash performance**, Escape was engineered to do just that. The National Highway Traffic Safety Administration (NHTSA) gave Escape double 5-Star ratings in side-impact testing (1st and 2nd rows), a 5-Star rating for driver-side frontal crash testing, and a 4-Star rating for the front passenger side.

In addition, Escape includes a number of standard and available features to help keep you feeling safe and secure, like a standard remote keyless entry system and the SecuriLock™ anti-theft system. After all, when it comes to peace of mind, more is definitely better.

Escape is built with sturdy unibody construction and **crumple zones** that are designed to dissipate energy away from the passenger compartment.

Side intrusion door beams help reduce passenger compartment intrusion in certain side impacts. The solid steel supports provide structural stability and energy absorption.

Meticulous attention has gone into designing Escape's braking system. Escape XLT and Limited models are equipped with a standard **4-wheel anti-lock braking system (ABS)** that provides controlled stopping power as well as steering control. Also available on XLS models.

1 Integrated into the luxurious leather-trimmed front bucket seats in Escape Limited are standard **side-impact airbags*** that offer protection in the event of certain side impacts. They're available on all models.

*Always wear your safety belt and secure children in the rear seat.

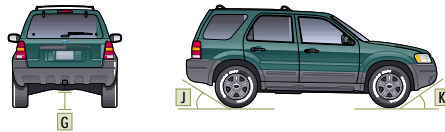
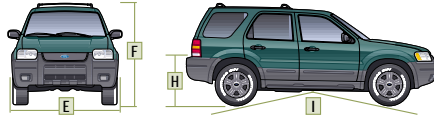
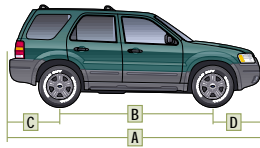
CONTROL



Sure, you've got to get from point A to point B, but you want to have some fun along the way. And you want to be both comfortable *and* in control. Escape's **fully independent rear suspension** has that covered. This smart design allows each rear wheel to respond to dips and bumps independently. That means a smooth ride and precise handling.

For improved traction, opt for Escape 4x4. The **Control Trac® II 4-wheel-drive system** provides two driver-selectable modes. Operate in "4x4 AUTO" for most driving conditions. There's also the "4x4 ON" mode that locks the front and rear axles together for enhanced traction in more extreme situations.

SPECIFICATIONS



Exterior	4x2/4x4
A. Overall length	173.0"
B. Wheelbase	103.1"
C. Overhang – rear	36.4"
D. Overhang – front	33.4"
E. Overall width	70.1"
F. Height	69.1"
G. Ground clearance (min.)	7.8"
H. Load floor height	29.3"
I. Ramp breakover angle	20.0°
J. Angle of departure	22.0°
K. Angle of approach	28.5°
Interior	
1st row	
Head room	40.4"
Shoulder room	56.3"
Hip room	53.4"
Leg room	41.6"
Leg room (max.)	42.7"
2nd row	
Head room	39.2"
Shoulder room	55.9"
Hip room	49.0"
Leg room	36.4"
Cargo (cu. ft.)	
Maximum cargo volume (2nd-row cushion removed)	69.2
Cargo volume (2nd row folded)	64.8
Behind 2nd row	33.1

STANDARD FEATURES

Mechanical

4-wheel independent suspension
100,000-mile tune-up interval*
Axle ratio – 2.93:1
Battery saver
Control Trac™ II full-time 4-wheel-drive system (4x4 models only)
Front-wheel drive (4x2 models only)
Fuel tank – 16-gallon capacity
Power rack-and-pinion steering
Stabilizer bar – Front
Unibody construction

Safety/Security

Airbags – Driver and front passenger 2nd Generation
Auto headlamps-off delay
Belt-Minder™ safety belt reminder
Brake/shift interlock with automatic transmission
Fuel pump inertia shutoff switch
Headlamps-on alert chime
Height adjustable safety belts – Front
Key-in-ignition alert chime

LATCH system upper tether anchors and lower anchors for child safety seats – Rear outboard positions
Remote keyless entry system with 2 key fobs
Safety belt energy management retractors – Front
Safety belt pretensioners – Front
SecuriLock™ – Passive anti-theft system
Side intrusion door beams

Seating

Front bucket seats
Rear bench seat with tip-fold-flat latch
Removable rear seat cushion

Interior

Accessory delay for power windows
Air conditioning
Assist handles – 4 front, 2 rear
Cargo area floor hooks (4)
Coat hook – 1 in 2nd row
Floor console – Storage bin and 5 cupholders (4 in XLT and Limited)
Glove compartment with lock
Head restraints – Adjustable (4)
Illuminated entry system
Power door locks with rear door child safety locks
Power points – 2 front
Power windows – With one-touch-down driver's side feature
Rear floor heat ducts
Tachometer
Tilt steering wheel
Visor vanity mirrors – Dual covered

Exterior

Bodyside cladding and bumpers – Grey molded-in color on XLS/XLT models, painted body color on Limited (monochromatic)
Headlamps – Aerodynamic halogen
Liftgate with flip-up glass
Power outside mirrors with manual fold feature
Rear defroster
Roof rack
Solar tinted glass (door glass and liftgate)
Windshield wipers – Front: variable-intermittent with washer; rear: 2-speed intermittent with washer

*Under normal driving conditions with regular fluid and filter changes.

Comparisons based on 2002 competitive models, publicly available information and Ford certification data at time of printing. Some features discussed may be optional. Vehicles shown may contain optional equipment. Features shown may be offered only in combination with other options or subject to additional ordering requirements or limitations. Following publication of the catalog, certain changes in standard equipment, options and the like, or product delays, may have occurred which would not be included in these pages. Your Ford Dealer is the best source for up-to-date information. Ford Division reserves the right to change product specifications at any time without incurring obligations.

MODEL-SPECIFIC FEATURES/OPTIONS

XLS Value 4x2		
XLS Sport 4x2		
XLS Popular 4x2 or 4x4		
Mechanical		
■	■	—
—	—	■
■	■	—
—	—	■
■	—	■
—	■	—
□	—	□
■	—	■
□	■	□
Safety/Security		
□	□	□
□	□	□
Seating		
■	■	■
Interior		
■	—	■
—	■	—
□	□	□
Convenience Group		
- Speed control		
- Retractable cargo cover		
- Perimeter alarm		
- Front and rear floor mats		
□	■	□
Floor mats – Color-keyed front and rear*		
Exterior		
—	■	—
■	■	■
—	■	—
□	—	□
—	—	□
—	—	□
Trailer tow – Includes Class II 3500-lb. receiver, 4-pin trailer wiring harness and engine oil cooler (3.0L 4x2) ¹		

■ Standard □ Optional — Not Available

*Optional only as part of Convenience Group on XLS Value 4x2 and XLS Popular 4x2 or 4x4.

**Requires 15" aluminum wheels/tires. ¹Engine oil cooler standard with 2.0L and 3.0L 4x4.

XLT Popular 4x2			
XLT Sport 4x4			
XLT Popular 2 4x2 or 4x4			
XLT Premium 4x2 or 4x4			
Limited 4x2 or 4x4			
Mechanical			
■	■	■	■
■	■	■	■
■	—	—	—
—	■	—	—
—	—	■	—
—	—	—	■
■	—	—	—
—	—	■	—
—	—	—	■
Safety/Security			
■	■	■	■
□	□	□	□
Seating			
■	■	■	—
■	■	■	■
—	—	—	—
■	■	■	■
Interior			
□	□	□	—
■	■	■	■
□	□	□	□
—	—	—	—
—	—	—	■
■	■	■	■
Convenience Group			
- Speed control			
- Retractable cargo cover			
- Perimeter alarm			
- Front and rear floor mats			
■	■	■	■
Floor console – With storage bin, armrest and 4 cupholders			
■	■	■	■
Instrument panel with painted center finish and front-door switch bezels			
—	□	□	■
Leather Comfort Group			
- Leather seating surfaces			
- Black leather-wrapped steering wheel			
- Overhead console with dual storage bins			
■	■	■	■
Power point – Cargo area (in addition to front)			
—	—	—	—
Visor vanity mirrors – Illuminated			
Exterior			
■	■	■	■
■	■	■	■
—	—	—	—
—	—	—	■
□	—	□	□
■	■	■	■
■	■	■	■
□	■	□	—
□	■	□	□
Trailer tow – Includes Class II 3500-lb. receiver, 4-pin trailer wiring harness and engine oil cooler (4x2) ⁵			
XLT Appearance Package			
- Painted Dark Shadow Grey bodyside cladding, bumpers and wheel-lip moldings			
- Side step bars – Painted Dark Shadow Grey			
- 16" bright machined-aluminum wheels			
—	■	—	□
Wheel-lip moldings ⁵ – Grey molded-in color on XLT Sport, painted body color on Limited (monochromatic)			

⁵Engine oil cooler standard on 4x4. ⁶Optional only as part of the XLT Appearance Package on XLT Premium.

ENGINES



2.0L DOHC Zetec 14 Engine



3.0L DOHC Duratec V6 Engine

	2.0L I4	3.0L V6
Horsepower (hp @ rpm)	127 @ 5400	201 @ 5900
Torque (lb.-ft. @ rpm)	135 @ 4500	196 @ 4700
Axle ratio	2.93:1	2.93:1
Towing capacity* (lbs.)	1000	2000 3500**

*Maximum capacity shown is for properly equipped vehicles with required equipment and a 150-lb. driver. Weight of additional options, equipment, passengers and cargo must be deducted from this weight. For additional information, see your Ford Dealer.

**With Class II trailer towing.

PAINT AND TRIM COLORS

INTERIOR/EXTERIOR COMBINATIONS

		Medium/Dark Pebble
		Medium/Dark Flint
		Ebony Black
■	■	XLS/XLS Sport/XLT
■		Oxford White
■		Gold Ash Metallic*
■	■	Chrome Yellow
■	■	Red Fire Metallic*
■		Aspen Green Metallic*
■	■	True Blue Metallic
■	■	Satin Silver Metallic
■	■	Dark Shadow Grey Metallic
■	■	Black
	■	XLT Sport
■	■	Chrome Yellow
■	■	Red Fire Metallic*
■	■	Dark Shadow Grey Metallic
■	■	Black
■	■	XLT Appearance Package
■	■	Oxford White
■	■	Red Fire Metallic*
■		Aspen Green Metallic*
■	■	True Blue Metallic
■	■	Satin Silver Metallic
■	■	Black
		Limited
■	■	Gold Ash Metallic*
■	■	True Blue Metallic
■	■	Satin Silver Metallic
■	■	Dark Shadow Grey Metallic
■	■	Black

*New for 2003.



Oxford White



Gold Ash Metallic



Chrome Yellow



Red Fire Metallic



Aspen Green Metallic



True Blue Metallic



Satin Silver Metallic



Dark Shadow Grey Metallic



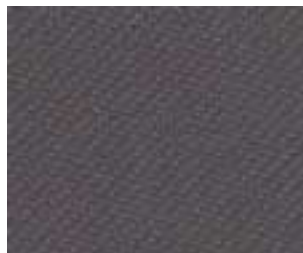
Black

Ford uses clearcoat paint for beauty and protection. Colors shown are representative only. See your dealer for actual paint/trim options.

WHEELS



Medium/Dark Pebble Cloth
Standard on XLS/XLS Sport



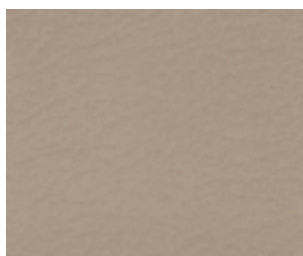
Medium/Dark Flint Cloth
Standard on XLS/XLS Sport



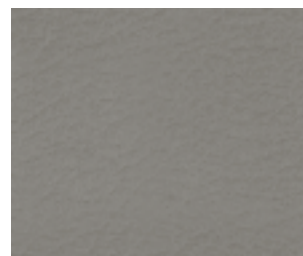
Medium/Dark Pebble Premium Cloth
Standard on XLT/XLT Sport



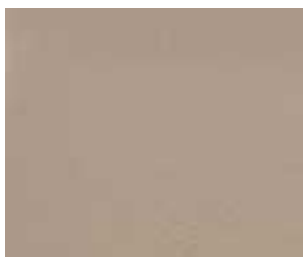
Medium/Dark Flint Premium Cloth
Standard on XLT/XLT Sport



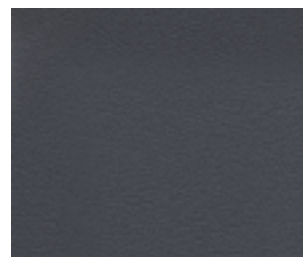
Medium/Dark Pebble Leather
Standard on XLT with Appearance Package, available on XLT Sport/Popular 2



Medium/Dark Flint Leather



Medium/Dark Pebble Premium Leather
Standard on Limited



Ebony Black Premium Leather
Standard on Limited



15" Styled Steel Wheel
Standard on XLS Value and XLS Popular



15" Sparkle Silver Cast Aluminum Wheel
Standard on XLS Sport



15" Aluminum Wheel
Standard on XLT Popular



16" Aluminum Wheel
Standard on XLT Popular 2 and Premium



16" Sport Aluminum Wheel
Standard on XLT Sport



16" Bright Machined-Aluminum Wheel
Standard on Limited and XLT with Appearance Package