

TOURAN



Das Auto.

FOR EVERYONE AND EVERYTHING.



Life is about choices and the Touran gives you the freedom to make choices. The spacious interior, versatile seating combinations and multiple storage compartments give you room to be flexible and mean that you're always ready for anything. The Touran's contemporary exterior

is handsome, dynamic and sporty, clearly showing off the new face of Volkswagen, giving you a car that is both versatile and good-looking. The Touran is a car made for everyone and everything.



Touran

SEATS THAT BEND OVER BACKWARDS FOR YOU.



* All models come standard with a multi-function steering-wheel.

With its incredibly spacious interior, abundance of storage compartments and versatile seating arrangements, including a 7-seater option, the Touran has space for everything. Whether you're carrying the whole family and some friends, or all the bits and pieces you need for a

long vacation, you'll find it all fits in, with ease. All three seats in the middle row can be easily adjusted, moved forwards and backwards, folded down or completely removed if necessary. The middle seat in the second row folds flat and has a robust plastic back with a protective



The Touran's comfortable and spacious seats will make every journey that you and your family take a pleasant one.



surrounding rim, forming a table for your passengers. The optional third row of seats is made up of two seats, that can be folded down separately into the floor of the luggage compartment, depending on your needs. In total, the Touran offers numerous different seating

arrangements and boasts between 121 and 1,913 litres of luggage space, depending on your seating arrangement. Now that is versatility!

SUNNY DAYS.





IT'S PRACTICALLY STUNNING.



From the first glance, it is clear that the Touran is a harmonious blend of elegant design and a functional use of space. With its distinctive new chrome-plated radiator grille featuring the new face of Volkswagen, the Touran's dynamic new look is stylish and sporty.

The rear of the Touran has been remodelled to reflect a more contemporary styling. A body-coloured bumper, gently curved tail gate and integrated roof spoiler contribute towards a more defined body, enhancing the car's exterior dynamics. The new, two part tail-lights



complete the rear styling, adding a refined touch to the overall appearance.

BLUE SKY DAYS.



The spacious interior of the Touran is nicely complemented by the optional panoramic glass sunroof that gives you an uninterrupted view of the sky above. It fills the cabin with natural light and adds an extra dimension to the considerable space inside. The sunroof is easily

operated from the ergonomically located control panel and includes a wind deflector, that allows you to enjoy the sun and fresh air at higher speeds. If you want to stay out of the sun, but still enjoy the fresh air, then you simply close the built-in roller blind when the sunroof is open.



STEEL WHEEL WITH STYLISED WHEEL COVERS –
6J x 15" (195/65 R15) – STANDARD ON THE TRENDLINE



"SEDONA" ALLOY WHEEL – 6J x 16" (205/55 R16) –
OPTIONAL ON THE TRENDLINE



"SACRAMENTO" ALLOY WHEEL – 6.5J x 16" (205/55 R16) –
STANDARD ON THE HIGHLINE



"OAKLAND" ALLOY WHEEL – 7J x 17" (225/45 R17) –
OPTIONAL ON THE HIGHLINE

On days that are too hot to have the windows down, or the sunroof open, the darkened rear side windows and tinted rear window will help keep you cool by reducing solar radiation by up to 65 percent. An added benefit of the tinted windows is that they keep the

occupants and luggage in the rear of the Touran out of sight of onlookers.

SPACE IS ITS OWN LUXURY.



The Touran is comfortable, spacious and versatile. Inside you'll find a luxurious, premium quality interior, conveniently located storage compartments and controls, and only the highest quality materials. From the refined seat upholstery, to the robust and

soft-touch plastics, you'll find that the Touran doesn't compromise when it comes to quality. Adding to your driving pleasure are standard features such as a 3-spoke leather multi-function steering-wheel, height and reach adjustable steering column, onboard computer, RCD-310



radio/MP3 with an eight speaker sound system, 'Climatic' air conditioning, front centre armrest and cruise control.

LIVE, WORK AND PLAY.





PUSH THE BUTTON.



Now you can please the whole family with the 'Climatronic' air conditioning system (standard on the 1.4 103kW TSI Highline). It creates individual comfort zones within the car, allowing you to control the temperature and air supply in each climatic zone. The temperature can be set on the display for precise climate

control, while quality sensors measure the quality of outdoor air and, if necessary, switch on recirculation mode to prevent polluted air entering the cabin. Gone are the days of struggling into tight parking spots. The innovative optional "Park Assist" programme (only available in 1.4 TSI 103kW Highline) takes all the



stress out of parallel parking by automatically sensing parking spots as you drive and then manoeuvring your car into the bay automatically. All you need to do is take your hands off the steering-wheel, control the accelerator and brake and clutch when necessary. Rear Park Distance Control is optional across the Touran

range. The optional Bi-Xenon headlights with LED daytime running lights and dynamic cornering lights let you know what's around the corner before you take it (only available in 1.4 TSI 103kW Highline).

THINK GREEN. LESS IS MORE.



You don't have to sacrifice your love of driving for an environmentally friendly car. The new 1.2 77kW TSI engine uses the genius of TSI technology to give you reduced fuel consumption and lower CO₂ emissions, just 149 g/km, without having to compromise on engine performance. The 2.0 TDI model is responsive with an

efficient common rail injection engine. The new common rail TDI engine is better for you and the environment, using less fuel and producing lower emissions whilst maintaining the high torque and excellent driveability for which Volkswagen TDI technology is renowned.



Model Range	1.2 TSI Trendline	2.0 TDI Trendline	2.0 TDI Trendline DSG®	1.4 TSI Highline
Power (kW@rpm)	77 @ 5,000	81 @ 4,200	81 @ 4,200	103 @ 5,600
Torque (Nm@rpm)	175 @ 1,550 - 4,100	250 @ 1,750	250 @ 1,750	220 @ 1,500 - 4000
Fuel consumption (ℓ/km) combined	6.4	5.4	5.7	6.8
CO ₂ Emissions (g/km)	149	144	149	159

Fuel Consumption figures calculated according to ECE Directive 99/100/EC using specific measuring procedures under specified operating conditions. These figures are therefore indicative only and may vary based on vehicle loading, climatic and traffic conditions, driving style and other conditions under which the vehicle is operated.

SAFETY FIRST, SECOND AND THIRD.

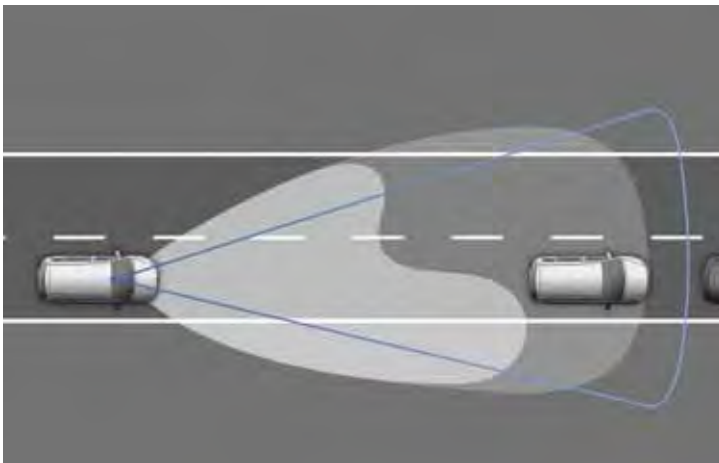


Engineered to be one of the safest People Movers on the road, there is no compromise when it comes to safety in the Touran. In the second row, all three seats have head restraints and three-point inertia-reel safety belts and two seats have ISOFIX attachments for easy and secure mounting of child seats. The versatile

braking assist systems, such as ABS (Anti-Lock Braking System), EBD (Electronic Brake-force Distribution), ASR (Anti-Spin Regulation), EDL (Electronic Differential Lock) and hill-hold control, work seamlessly with the Electronic Stabilisation Programme to correct oversteer and understeer and prevent any loss of control



With head restraints and three-point inertia-reel safety belts, you'll be firmly secured in the Touran.



The Touran's daytime running lights and Bi-xenon headlights with cornering lights will make sure you see every danger on the road



ISOFIX seat attachments makes loading your most precious cargo easier than ever before.

of the vehicle. You can also take comfort in knowing that the Touran has driver and front passenger airbags, front side airbags and curtain airbags for the front and second row passengers. Bi-xenon headlights (only available as an option on the 1.4 TSI 103kw Highline) with cornering lights are optional and adjust the light distribution and range,

ensuring that you have a clear view of any obstacles that may appear on the road.

VOLKSWAGEN PEACE OF MIND.



Volkswagens are loved by millions of people all around the world, for a very good reason: they are built by people for people. From the elegant design of its body, to the numerous innovations, inside and out, the Touran was built by the makers of People's Cars to be the ultimate

People Mover . You will always drive in comfort, you'll enjoy every ride and you'll have complete peace of mind knowing that you are protected by intuitive and futuristic safety features.



You can also take comfort in knowing that the Touran comes standard with a 5-year / 90,000 km AutoMotion Service Plan and has a 3-year / 120,000 km warranty. An AutoMotion Maintenance Plan, with various distances of coverage, is optional on all models.

And with 105 Dealers nationwide, you can have confidence in our technical expertise and be assured of outstanding new car sales service and after-sales support.

READY TO DELIVER EXCEPTIONAL AFTER-SALES CUSTOMER SERVICE.



With 105 Volkswagen Dealerships in South Africa, Namibia and Botswana, you can be assured that, no matter where you are, top quality parts and service will be available, helping you get back on the road sooner. You can expect nothing less from one of the world's leading car brands.

The Touran is available at all Volkswagen Dealerships. Visit one and test drive this remarkable example of German ingenuity today. You can find a comprehensive list of Volkswagen Dealerships on our website: vw.co.za/dealers



Volkswagen Service®



Genuine Parts & Accessories®



READY FOR YOU.



When purchasing and insuring a vehicle it makes sense to enlist the help of a trusted partner. Volkswagen Financial Services' team of dedicated advisers will assist with every aspect of the vehicle purchasing and insuring process, making it as quick and easy as possible. Volkswagensure is a comprehensive range of affordable

motor insurance products available to Volkswagen owners. Brought to you by Volkswagen Financial Services, Volkswagensure is underwritten by The Hollard Insurance Company Ltd. All Volkswagen Financial Services products are designed to provide you with a hassle-free motoring experience and are



conveniently available from any Volkswagen Dealer in South Africa. With Volkswagen Financial Services, driving home your Touran will be easier and faster than you ever imagined.

Volkswagen Financial Services

Call centre: 0861 111 172

Volkswagenensure

Call centre: 0800 204 638



Volkswagen Financial Services

Volkswagen Financial Services is a division of WesBank, a division of FirstRand Bank Limited. An authorised Financial Services and Credit Provider. NCRCP20

THINK TOMORROW. THINK BLUE.



In a world where environmental issues have become everyone's concern, it's important that we all do our bit to be kinder to the environment. This is the philosophy behind Volkswagen's Think Blue campaign. Pioneering technologies like Turbo Stratified Injection (TSI), Direct Shift Gearbox

(DSG)[®] and Turbocharged Direct Injection (TDI) are the pillars of Think Blue – Volkswagen's vision of creating efficient and sustainable vehicles for all. In the Touran, the engineering dynamics employed in common rail diesel injection technology produces cleaner, more refined and efficient



combustion, for improved performance and fuel consumption. There's no need to choose between performance and economy; the 2.0 TDI engine has less of an impact on the environment and is kinder to your pocket. Best of all, this engine offers outstanding performance and value for money.

Economical fuel consumption, longer service and maintenance intervals and lower emissions all combine to keep running costs low and contribute to a better tomorrow for all.

Think Blue.

DAS AUTO. *THE CAR.*



Only when a car defines an era. Only when a car becomes a way of life. Only when a car gives its name to an entire generation. Only when a car possesses both size and stature. Only when a car provides a

home for the whole family. Only when a car invites everyone to share its innovations. Only when a car creates technologies that break new ground. Only when a car delivers a miracle of performance.



Only when today's car is already anticipating tomorrow. Only then can it be called *The Car* (Das Auto). The Touran is the ultimate expression of Das Auto – redefining the multi-purpose vehicle and offering

customers world-class quality, safety, technology and performance. That's why it's *The Car* for people going places. Touran. For everyone and everything.

COLOUR YOUR WORLD.



Candy White
Non-Metallic
B4B4



Pepper Grey
Metallic
U5U5



Acapulco Blue
Metallic
2W2W



Reflex Silver
Metallic
8E8E

The illustrations on this page can only be regarded as a general guide as the printing process cannot render the true depth and brilliance of the paint finishes with absolute accuracy. Please note that certain paint and trim combinations are not available.



**Silver Leaf
Metallic
7B7B**



**Wild Cherry
Metallic
2K2K**



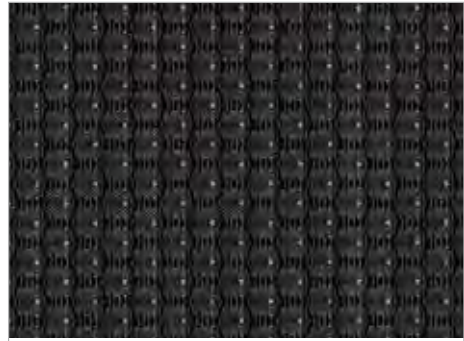
**Toffee Brown
Metallic
4Q4Q**

CLOTH UPHOLSTERY.

Trendline



**"Charly" Anthracite
YV**



**"Charly" Blue-Anthracite
PV**

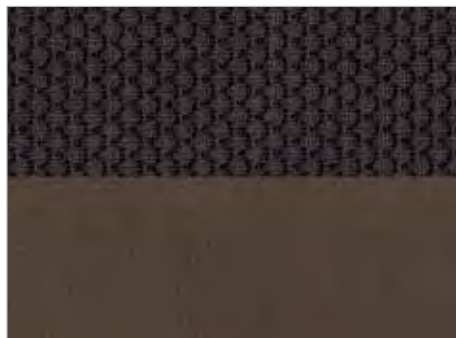
Highline



**Alcantara / "Maja" Anthracite
combination
YV**



**Alcantara / "Maja" Desert Beige
combination
PQ**



**Alcantara / "Maja" Soft Brown
combination
PR**

The illustrations on this page can only be regarded as a general guide as the printing process cannot render the true colour and texture of the trim upholstery with absolute accuracy. Please note that certain paint and trim combinations are not available.

LEATHER UPHOLSTERY.

Highline only



Vienna Anthracite
YV



Vienna Mauro Brown
PU



Vienna Desert Beige
PQ

Leather options available on Highline models only.



This information was effective as at October 2012 and is subject to change without notice.

Visit us at vw.co.za

©Volkswagen South Africa



Sappi Triple Green is a paper grade manufactured according to three environmental pillars: A minimum of 60% of the pulp of this paper is sugar cane fibre; the bleaching process is chlorine-free; and the remaining pulp comprises of wood fibre obtained from sustainable and internationally-certified afforestation using independently-audited chains of custody. Triple Green is fully recyclable.