

The Touran



Das Auto.





ROOM FOR EVERYTHING. EXCEPT ROUTINE.

| | |
|------------------------------------|----|
| THE TOURAN | 04 |
| EXTERIOR AND ALLOY WHEELS | 12 |
| INTERIOR | 16 |
| SAFETY | 22 |
| THINK BLUE | 24 |
| ENGINES, CHASSIS AND GEARBOXES | 26 |
| COMFORT | 28 |
| AIR CONDITIONING AND MULTIMEDIA | 30 |
| PAINT, UPHOLSTERY AND COMBINATIONS | 32 |
| TECHNICAL SPECIFICATION | 38 |
| TECHNOLOGY | 42 |
| VOLKSWAGEN SERVICE | 46 |

THE TOURAN. LIFE IS A WHOLE LOT MORE INTERESTING.

In the Touran, each day becomes exciting. Advanced technologies and a luxurious interior ensure total driving pleasure, while a flexible seating system provides space for up to seven people, and any amount of sports equipment, shopping or luggage. With state-of-the-art safety features ensuring complete peace of mind, your Touran is an unbeatable companion for everyday life.





AN EXTRA DIMENSION
OF LIGHT AND SPACE.



AN ADAPTABLE
INTERIOR THAT'S
READY FOR ANYTHING.



EVERYDAY LIFE JUST
GOT A WHOLE
LOT MORE INTERESTING.

EXTERIOR AND ALLOY WHEELS.

The Touran is an extraordinary vehicle, combining style and luxury with the ultimate in practicality and spaciousness, ensuring every journey is an exciting experience. Dynamic bodylines and attention to detail give the exterior its distinctive look, enhanced by a choice of exclusive alloy wheels.



Ⓢ Ⓞ ⓈⓅ **Bi-xenon headlights** feature automatic range adjustment, dynamic curve lighting and headlight washers to ensure the optimum headlight setting and illumination. Light distribution of the dipped beam is linked to speed, ensuring a longer beam is emitted at faster speeds for better illumination of the road ahead, while LED daytime running lights and LED rear number plate lights make sure your vehicle is more visible during the day. Model shown is Touran SE.

Bi-xenon headlights are not available in conjunction with optional High beam assist.

Standard on S Ⓢ Standard on SE ⓄⓈ Standard on Sport ⓈⓅ
Optional on S Ⓞ Optional on SE ⓄⓈ Optional on Sport ⓈⓅ



Ⓢ ⓄⓈ ⓈⓅ The rear design of the Touran features angular and dynamic lines that reflect its overall contemporary styling. The body-coloured bumper and integrated roof spoiler give greater definition to the bodylines, and the gently curving tailgate enhances the exterior dynamics, giving a more refined look. Model shown is Touran SE.



Ⓢ ⓄⓈ ⓈⓅ The distinctive radiator grille with chrome-plated louvre inserts adds a sporty, stylish touch, while a gloss black background sets off the famous Volkswagen logo, giving the front design a characteristic and dynamic look.



Ⓢ ⓄⓈ ⓈⓅ Two-piece rear lights complete the rear styling, adding a touch of elegance, giving the Touran its distinctive identity.



SE SP The heat insulated rear tinted glass from the B pillar backwards reduces the glare of sunlight by up to 65%, ensuring a pleasant interior temperature in the passenger compartment and giving occupants additional privacy.



SE SP The electric panoramic sunroof of the Touran gives an uninterrupted view of the sky above, filling the interior with natural light and providing an extra dimension of light and space. Easily operated and adjusted via the practically located control panel, it also includes a wind deflector, enabling you to enjoy the sun and fresh air on faster journeys, while tinted glass ensures a pleasant interior temperature even in strong sunlight. Should you wish to stay out of the sun, yet still enjoy fresh air, an integrated roller blind can be used while the sunroof is open. Model shown is Touran Sport.



S 15 inch 'Misano' alloy wheels with 195/65 R15 tyres add a sporty look to the exterior and are protected by anti-theft wheel bolts. S BlueMotion Technology models feature 195/65 R15 low rolling resistance tyres as standard.



SE SP 16 inch 'Cleveland' alloy wheels with 205/55 R16 tyres add an extra touch of elegance and style and are protected by anti-theft wheel bolts. SE BlueMotion Technology models feature 205/55 R16 low rolling resistance tyres as standard. Not available on S BlueMotion Technology models.



SP 16 inch 'Sacramento' alloy wheels with 205/55 R16 tyres are a real design classic, giving the exterior styling a sporty look, and are protected by anti-theft wheel bolts. Sport BlueMotion Technology models feature 205/55 R16 low rolling resistance tyres as standard.



SE SP 16 inch 'Perth' alloy wheels with 205/55 R16 tyres give a touch of individuality to your Touran and are protected by anti-theft wheel bolts. BlueMotion Technology models feature 205/55 R16 low rolling resistance tyres as standard.



SE SP 17 inch 'Oakland' alloy wheels with 225/45 R17 tyres are striking and distinctive, and are protected by anti-theft wheel bolts. Not available on BlueMotion Technology models.

Not with 5 seat models.



INTERIOR.

The Touran's passenger compartment offers an exceptional combination of space, flexibility, luxury and comfort. With numerous seating options and storage compartments, you couldn't ask for a more versatile interior, while top quality materials provide a level of finish that is second to none and the clearly arranged dashboard ensures everything is ready to hand, just where you'd expect it to be.



5 The Touran S offers a range of standard equipment that is truly impressive as an entry level model. Contemporary 'Charly' upholstery and matching 'Matt chromium' interior trim is both stylish and comfortable, and refinements such as manually controlled air conditioning, height-adjustable driver and front passenger seats, front centre armrest with storage compartment and the height and reach adjustable three-spoke steering wheel ensure optimum comfort. The multifunction computer, RCD 310 DAB radio/MP3 compatible CD player with eight speakers for crystal clear digital radio reception, and speed-sensitive, power-assisted steering all enhance your driving experience, while a range of practical features includes storage compartments in all doors and the roof console, and 12V sockets in the front and luggage compartment. Interior shown features optional leather trimmed steering wheel and gear knob, and carpet mats.



56 Refined and elegant, the Touran SE features stylish 'Miu' upholstery and matching 'Iridium' interior trim, while front comfort seats with height and lumbar adjustment, four way adjustable head restraints and heat insulated rear tinted glass, 65% light absorbing from B pillar backwards, ensure a relaxing journey especially on long trips. Adding to your comfort are such refinements as a leather trimmed multifunction steering wheel, an RCD 310 DAB radio/MP3 compatible CD player with eight speakers and connectivity to an iPod or MP3 player via an AUX-in socket or Multi Device Interface (MDI) and a multifunction computer. The multifunction steering wheel also controls the Bluetooth telephone connection for HFP (Hands Free Profile) enabled phones*, allowing you to use your phone safely whilst driving. Ultrasonic and audible parking sensors front and rear, and an optical parking display on the vehicle's audio system help you park, aided by the sensor-controlled Park Assist steering aid. The SE also features a rain sensor and automatic dimming interior rear-view mirror, and an automatic coming/leaving home lighting function, while practical details include useful storage drawers beneath both front seats, folding tables on the rear of the front seats, and 12V sockets for both the 2nd row of seats and luggage compartment. Interior shown features optional carpet mats.

* Phones must be Bluetooth HFP (Hands Free Profile) compatible, please contact your authorised Volkswagen retailer for specific phone compatibility.



Model shown is Touran Sport with optional 17" 'Oakland' alloy wheels and metallic paint.

Ⓢ In terms of luxury, convenience and sporty good looks, the **Touran Sport** is hard to beat. High quality Alcantara upholstery on the seat centre sections and 'Microfibre' side bolsters give the interior a stylish and contemporary feel, enhanced by 'Chrome frame' interior trim, and front and rear carpet mats. Front sports seats with height and lumbar adjustment ensure optimum comfort, while the restyled climate control – 2Zone electronic air conditioning with automatic air recirculation enables the driver and front passenger to select their preferred temperature setting. The Touran Sport also includes front fog lights with static cornering function for greater illumination of the road ahead, and a Driver Alert system, an intelligent safety feature which detects when the driver is becoming tired and recommends taking a break. The RCD 510 touch-screen DAB radio/dash mounted MP3 compatible six CD autochanger features a digital radio receiver delivering crystal clear sound quality, while Bluetooth telephone connection* allows you to make and receive phone calls via the radio system or multifunction steering wheel.

* Phones must be Bluetooth HFP (Hands Free Profile) compatible, please contact your authorised Volkswagen retailer for specific phone compatibility.





S SE SP With just one simple hand movement, the middle seat in the 2nd row transforms into a table for the use of rear passengers. Made of robust plastic and completely level, the table also features a protective rim, which is very useful if any liquids are spilt. All three seats in the middle row can be easily and separately removed, folded down, adjusted or moved forward or backward, depending on your requirements. Interior shown is Touran SE with optional carpet mats.



SE SP The backrest of the height adjustable front passenger seat folds completely flat, providing a completely level surface that can be used as a table and also extending the load-through facility. Interior shown is Touran Sport with optional leather* upholstery.



S SE SP Storage compartments in the roof console are easily accessible by both driver and front passenger, providing practical storage space for anything that needs to be within easy reach.



S SE SP The seating arrangement in the 3rd row comprises two single seats, which can be folded down separately into the boot floor space to suit your stowage requirements. In total, the Touran offers more than 500 seat combinations, offering the ultimate in flexibility and providing between 121 and 1,989 litres of luggage space, depending on your seating arrangement. As a seven-seater, the Touran has a generous boot space, and whichever configuration you choose, its level boot floor and protective carpet lining provides a durable and robust storage area. Interior shown is Touran SE.



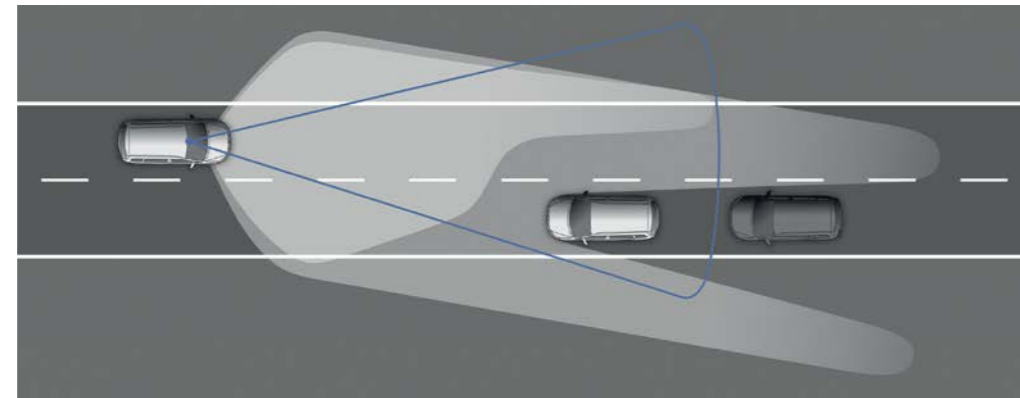
SE SP Convenient drawers beneath the driver's and front passenger's seat provides additional storage space for those essential items you want to keep close to hand.

SAFETY.

The Touran is nothing short of miraculous when it comes to space, but in terms of safety there is no room for compromise. Equipped with the latest intelligent safety features, it provides maximum protection for every occupant, enabling you to drive safely and at ease, and focus purely on the driving experience.

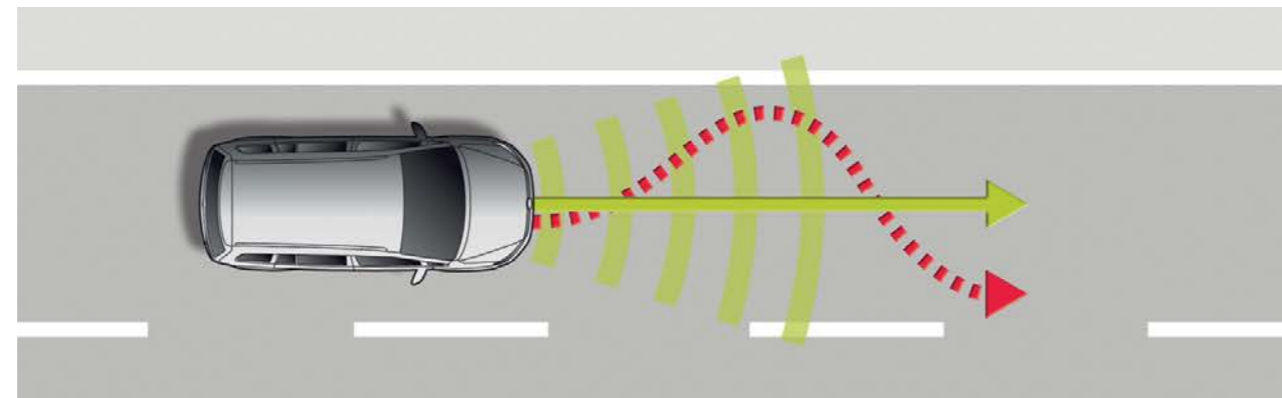


SP The **Driver Alert** system detects when the driver is becoming tired and recommends taking a break. This is achieved by monitoring driving behaviour closely, noting any erratic steering wheel movement and alerting the driver via visual and audible warnings.



S SE SP The **High beam assist** function ingeniously senses the lights from oncoming vehicles and switches between main and dipped beam accordingly.

High beam assist is not available in conjunction with optional Bi-xenon headlights.



SE SP **Lane Assist** is a camera controlled lane tracking aid that countersteers your vehicle if it drifts from your chosen lane and also gives an audible warning should you remove your hands from the steering wheel. When ordered in conjunction with the RNS 315 navigation/DAB radio system or RNS 510 DVD navigation/DAB radio system, it also includes Traffic Sign Recognition. This system will recognise roads signs and display them on the navigation system's display, providing the driver with additional notification and warnings.



S SE SP In the 2nd row, all three single seats are equipped with **head restraints and three-point automatic seat belts**, and the outer seats are fitted with height adjustable seat belts.



S SE SP Up to two **child seats** can be fitted easily and safely to the outer seats in the 2nd row, using the Isofix fixings attached directly to the vehicle's chassis. Interior shown is Touran SE.



S SE SP The **standard airbag system** consists of driver's and front passenger's airbags with passenger's airbag deactivation switch, curtain airbags for front and 2nd row passengers, and front seat side impact airbags. Together with seat belts, airbags reduce the risk of serious head and chest injuries: as soon as the crash sensors register a collision, a gas generator fills the airbags within 30 to 40 milliseconds. The activated airbags then cushion the head and upper part of the body, distributing the impact of the collision over as wide an area as possible and ensuring less forward movement of the neck, significantly reducing risk of whiplash and injury. Interior shown is Touran SE.



S SE SP The **Electronic Stability Control (ESC)** utilises sensors to detect critical situations at an early stage, reacting within milliseconds by controlling the speed of individual wheels, helping to bring the vehicle under control.

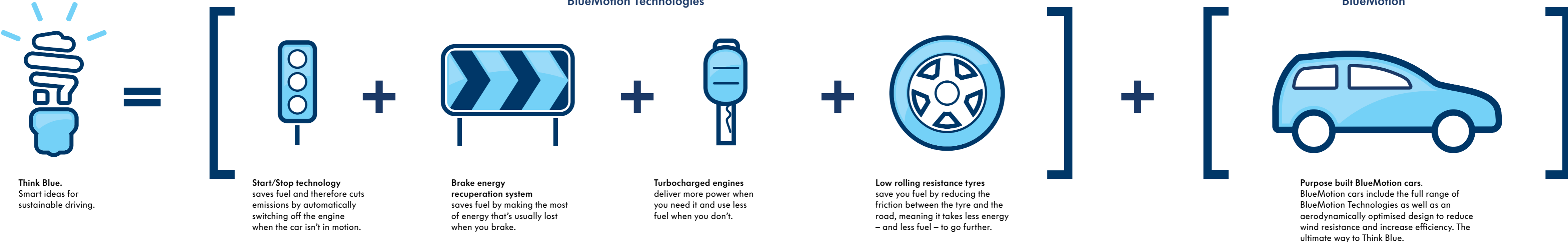


S SE SP In the event of a change in air pressure, the **tyre pressure loss indicator** symbol appears in the multifunction display, advising the driver to rectify the situation.

Think Blue.

Sustainability + Ingenuity.

'Think Blue' is Volkswagen's promise to create progressive, environmentally friendly products and processes. So from our concepts to our designs, from our fabrics to our machines, from our buildings to our water supply, from our engines to the open road we can help shape a more sustainable future. We have already started by creating BlueMotion cars and efficient BlueMotion Technologies that save you money and reduce emissions.



*BlueMotion Technologies are available on all Volkswagens, excluding Phaeton, and vary between models.



ENGINES, CHASSIS AND GEARBOXES.

The combination of direct injection and intelligent turbocharging technology ensures petrol engines with **TSI technology** deliver all the benefits of high torque with low fuel consumption.

TDI diesel engines combine high pulling power with low fuel consumption and emission levels. Even with a small capacity engine, the turbocharger ensures high and efficient performance.

The Touran really comes to life when you start the engine. Whether you choose a petrol or diesel variant, the very latest drive technology delivers the ultimate in pulling power, performance and energy efficiency. Which means you can look forward to an exciting drive that's as frugal as it's fun.

Engine technology excels in the Touran, with a selection of two petrol and three diesel variants delivering exceptional levels of performance and economy. Volkswagen's technologically advanced TSI engines combine excellent driveability with impressive fuel economy. The combination of direct fuel injection and intelligent turbocharging technology allows petrol engines with TSI technology to work particularly efficiently, offering such advantages as high performance, high torque and reduced fuel consumption. TSI technology is available as either a 1.2 litre TSI 105 PS or a 1.4 litre TSI 140 PS.



The **dual clutch Direct Shift Gearbox (DSG)** represents a milestone in the development of the latest gearbox technology. This innovative automatic gearbox shifts smoothly and imperceptibly into the pre-selected next gear within a few hundredths of a second, without disrupting traction. Interior shown is Touran Sport with optional leather* upholstery.



SE SP Adaptive Chassis Control (DCC) adapts the damping control and shock absorption rate to the road conditions and driving style you require within milliseconds. At the touch of a button, you decide how firm or comfortable you wish to set the suspension, with a choice of three settings: Sport, Comfort or Normal. In Sport mode, the steering also adapts to a sporty driving style. Not available on BlueMotion Technology models.

The first diesel engine available for the Touran is the 1.6 litre TDI 105 PS BlueMotion Technology which achieves 61.4mpg on the Combined fuel cycle*. Two 2.0 litre TDI units are also available with either 140 PS or 177 PS. The 140 PS engine is capable of a top speed of 126mph where the law permits and with its BlueMotion Technology credentials produces an impressive CO₂ emission figure of just 127g/km, whilst achieving 58.9mpg on the Combined fuel cycle*. Finally, the powerful 177 PS TDI DSG, can accelerate the Touran Sport to 62mph in just 8.8 seconds on its way to a top speed of 133mph where the law permits.

* Please see pages 38-41 for CO₂ emissions and fuel consumption figures.

Optional on S **S** Optional on SE **SE** Optional on Sport **SP**

* Some parts of leather interior will contain artificial leather.

COMFORT.

Not only is the Touran unbelievably spacious, it's also exceptionally comfortable, ensuring every journey is an enjoyable experience, rather than simply a trip from A to B. A range of innovative equipment provides many useful functions, helping to take the stress out of driving and ensuring the well-being of every occupant.



Ⓢ ⓄⓈ ⓄⓈ The Park Assist, with ultrasonic front and rear parking sensors, not only makes parallel parking significantly easier, but now has the added functionality to help you reverse park into a space at 90 degrees to the kerb. The driver activates the system by pressing a button on the centre console and, using ultrasonic parking sensors, Park Assist will then detect a parking space large enough for either reverse or parallel parking. Once the vehicle is in reverse, all the driver has to do is operate the accelerator and brake, and keep a good lookout, while the Touran steers itself into its chosen space. Improvements to the system mean Park Assist can now parallel park in particularly small spaces, that can be less than one metre longer than the vehicle.



Ⓢ ⓄⓈ ⓄⓈ Rear parking sensors, are ultrasonic, audible with audio volume reduction when activated and optical parking display via vehicle's audio system.

ⓄⓈ ⓄⓈ ⓄⓈ The leather trimmed multifunction steering wheel enables you to operate the radio/CD player, optional navigation/radio system and, on SE and Sport models the Bluetooth telephone connection, with the greatest of ease without taking your hands off the wheel.

Phones must be Bluetooth HFP (Hands Free Profile) compatible, please contact your authorised Volkswagen retailer for specific phone compatibility.



ⓄⓈ ⓄⓈ The rear-view camera, shown here as part of the RNS 510 touch-screen DVD navigation/DAB radio system option, is located in the rear tailgate and reproduces an electronically straightened image on the audio system's display. This provides an unobscured view to the rear of the vehicle, making parking easier and safer, even when towing a trailer.

Ⓢ ⓄⓈ ⓄⓈ The rear-view camera can also be specified in conjunction with the RCD 510 touch-screen radio system in lieu of DAB digital radio receiver, or RNS 315 touch-screen navigation/DAB radio system.

AIR CONDITIONING AND MULTIMEDIA.

Thanks to a wealth of innovative features, the Touran is all about relaxation and individuality. The latest air conditioning system enables you and your passengers to select your preferred interior temperature, while audio and navigation options allow you to create just the level of functionality that best meets your needs.



SE SP Climate control – 2Zone electronic air conditioning controls the temperature electronically and divides the interior into two different climate zones, enabling the driver and front passenger to adjust the temperature, air supply and distribution to suit their individual preference. An air quality sensor continually monitors the outside air, automatically activating the interior air recirculation if necessary. Image shown features optional RNS 510 touch-screen DVD navigation/DAB radio system.



SE SP Bluetooth telephone connection for HFP (Hands Free Profile) enabled telephones allows you to use your phone safely whilst driving. The phone book and call information is displayed on the audio system's display and on the multifunction computer.

Optional Bluetooth telephone connection for all S models is operated via a button in the roof lining above the driver's seat, when not ordered in conjunction with the multifunction steering wheel.

Phones must be compatible with HFP (Hands Free Profile), please contact your authorised Volkswagen retailer for phone compatibility.



SE SP The Multi Device Interface (MDI) with USB and iPod cables enables you to connect and charge a compatible device, while track selection is viewed and selected via the vehicle's radio system.



SE The RCD 310 DAB radio/MP3 compatible CD player offers great acoustics and crystal clear digital audio broadcasts and an AUX-in socket for connection to an external multimedia source, such as iPod or MP3 player.



SE SP The RCD 510 touch-screen DAB radio/dash-mounted MP3 compatible six CD autochanger features a large 6½ inch colour display, with intuitive menu navigation and touch-screen operation. It also features an AUX-in socket for connection to an external multimedia source, such as iPod or MP3 player and an SD card reader.



SE SP The RNS 315 touch-screen navigation/DAB radio system with MP3 compatible CD player features a 5 inch colour display with clearly arranged map navigation, as well as an SD card reader and practical AUX-in socket for connecting external audio devices, such as an iPod or MP3 player.



SE SP The RNS 510 touch-screen DVD navigation/DAB radio system with integrated voice control and rear-view camera will guide you to your destination and includes a 6½ inch colour display. This state-of-the-art system responds to spoken voice commands for navigation, DVD, CD and radio functions. The 30 GB hard drive is preloaded with navigation data and it also plays DVDs (when the vehicle is stationary) and music from the DVD drive, 30 GB hard drive or via an SD card. Also featured is an AUX-in socket for connection to an external multimedia source, such as an iPod or MP3 player. The rear-view camera provides a clear view to the rear of your vehicle, transmitting a live image to your navigation system's display, enabling you to manoeuvre quickly and easily into the most difficult parking space.

Note, the DVD playback will not function whilst the navigation system is in use, or the vehicle is in motion. Includes Traffic Sign Recognition when ordered in conjunction with Lane Assist.

RCD 510 DAB radio system, RNS 315 navigation/DAB radio system or RNS 510 DVD navigation/DAB radio system cannot be specified in conjunction with each other.

PAINT.

Before we even think about the paint finish, we treat the bodyshell with our multi-coat rust protection process. We galvanise it to guard against corrosion, add further protection to the underbody and finally apply a flawless base coat – only then, are we ready to apply one of our range of gorgeous colours.



© Pure White · Non-Metallic · 0Q



Ⓢ Urano Grey · Non-Metallic · 5K



© Titanium Beige · Metallic · 0N



© Wild Cherry Red · Metallic · 2K



© Java · Metallic · 4Q



© Silver Leaf · Metallic · 7B



© Reflex Silver · Metallic · 8E



© Pacific Blue · Metallic · D5



© Nimbus Grey · Metallic · U5



© Night Blue · Metallic · Z2



© Deep Black · Pearl Effect · 2T



© Venetian Green · Pearl Effect · E5

Standard Ⓢ Optional at extra cost ©

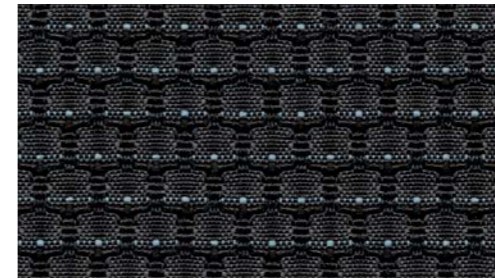
Please note: The print processes do not allow exact reproduction of the paint colours.

UPHOLSTERY.

Whichever upholstery you choose, there are two things that all seat coverings have in common: the high-quality materials and uncompromising good workmanship. This can be seen, for example, in the very densely woven fabrics which are so reliably protected from wear and tear, thus offering extended durability.



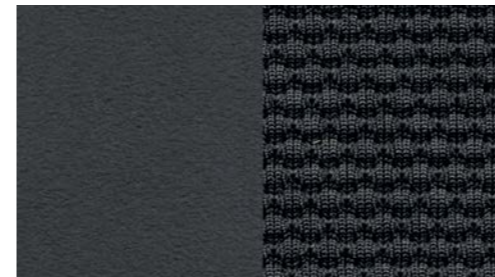
Anthracite · 'Charly' cloth · YV
Ⓢ S, S BlueMotion Technology



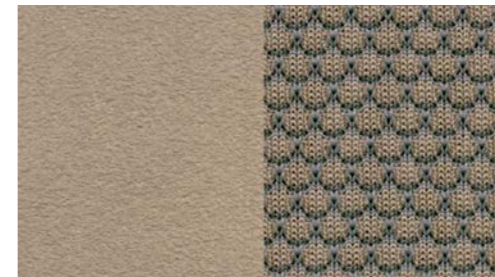
Anthracite · 'Miu' cloth · YV
Ⓢ SE, SE BlueMotion Technology



Desert Beige · 'Miu' cloth · PQ
Ⓢ SE, SE BlueMotion Technology



Anthracite · Alcantara cloth · YV
Ⓢ Sport, Sport BlueMotion Technology



Desert Beige · Alcantara cloth · PQ
Ⓢ Sport, Sport BlueMotion Technology



Anthracite · 'Vienna'† leather · YV
© SE, SE BlueMotion Technology,
Sport, Sport BlueMotion Technology



Desert Beige · 'Vienna'† leather · PQ
© SE, SE BlueMotion Technology,
Sport, Sport BlueMotion Technology

Standard Ⓢ Optional at extra cost ©

† Some parts of leather interior will contain artificial leather.

Please note: The print processes do not allow exact reproduction of the upholstery colours.

COMBINATIONS.

Seat upholstery

'Charly' cloth on normal seats
Standard on S, S BlueMotion Technology
Anthracite (YV)

'Miu' cloth on comfort seats
Standard on SE, SE BlueMotion Technology
Anthracite (YV)
Desert Beige (PQ)

Alcantara seat centre sections and
'Microfibre' side bolsters on sports seats
Standard on Sport, Sport BlueMotion Technology
Anthracite (YV)
Desert Beige (PQ)

'Vienna' leather on sports seats**
Optional on SE, SE BlueMotion Technology,
Sport, Sport BlueMotion Technology
Anthracite (YV)
Desert Beige (PQ)

| Carpet | Dashboard/Centre console | Pure White 0Q* | Urano Grey 5K | Titanium Beige Metallic* 0N | Wild Cherry Red Metallic* 2K | Java Metallic* 4Q | Silver Leaf Metallic* 7B | Reflex Silver Metallic* 8E | Pacific Blue Metallic* D5 | Nimbus Grey Metallic* U5 | Night Blue Metallic* Z2 | Deep Black Pearl Effect* 2T | Venetian Green Pearl Effect* E5 |
|--------|--------------------------|----------------|---------------|-----------------------------|------------------------------|-------------------|--------------------------|----------------------------|---------------------------|--------------------------|-------------------------|-----------------------------|---------------------------------|
| Black | Anthracite/Anthracite | ● | ● | ● | ● | ● | ● | ● | ● | ● | ● | ● | ● |
| Black | Anthracite/Anthracite | ● | ● | ● | ● | ● | ● | ● | ● | ● | ● | ● | ● |
| Black | Anthracite/Anthracite | ● | ● | ● | - | ● | ● | ● | ● | ● | ● | ● | ● |
| Black | Anthracite/Anthracite | ● | ● | ● | ● | ● | ● | ● | ● | ● | ● | ● | ● |
| Black | Anthracite/Anthracite | ● | ● | ● | ● | ● | ● | ● | ● | ● | ● | ● | ● |
| Black | Anthracite/Anthracite | ○ | ○ | ○ | ○ | ○ | ○ | ○ | ○ | ○ | ○ | ○ | ○ |
| Black | Anthracite/Anthracite | ○ | ○ | ○ | - | ○ | ○ | ○ | ○ | ○ | ○ | ○ | ○ |

* Pure White Non-Metallic, Metallic and pearl effect paints, and 'Vienna' leather upholstery are optional at extra cost.
† Some parts of leather interior will contain artificial leather.
● Standard. ○ Optional at extra cost. - Not available.



There's a Volkswagen for all of us.

Nippy city run around? Luxurious executive saloon? Open-top cruiser? Whatever it is you're looking for, we probably have it. From the iconic Beetle and Golf GTI to the up! and ultra-efficient BlueMotion Polo, there's a Volkswagen for everyone.

If you're thinking you might like to try a different Volkswagen, take a look at the selection below to see what else we have. There are 21 models in our range, so there's bound to be at least one that catches your eye.



Efficient

Our BlueMotion models benefit from innovative energy-saving technology that helps you optimise fuel consumption and reduce harmful emissions. This includes low rolling resistance tyres and improved aerodynamics, accompanied with advanced engines and gearboxes. Choose from the BlueMotion Polo, Golf or Passat.

However, BlueMotion Technology can be found across our range where automatic Start/Stop technology and brake energy recuperation is standard on the majority of our engines, helping you to save more money by being more efficient.



Sporty

Scirocco: As exciting to drive as it is to look at. Style, performance and power.

You will also find our sporty gene in the iconic Golf GTD, GTI and R. Or for something more refined and elegant, there's the Eos too.



Spacious family cars

Sharan: The ultimate in convenience with sliding rear doors, and enough space for the whole family. And their luggage. And the dogs.

If it's space you're after, then you might also like to consider the Tiguan, Golf Estate, Touran and Passat Estate.



Style

Beetle: The original icon. And still the most unique way to make a fashion statement.

For more fun with the top down, why not consider Beetle Cabriolet, Golf Cabriolet or Eos.



City run around

up!: The ideal city car. Efficient, fun and surprisingly spacious, with that trademark Volkswagen solidity.

If you're looking for something slightly more spacious, then why not consider the up!'s bigger sibling, the Polo. City run around efficiency with more versatility and even more space can be found on the iconic Golf – winner of 'World Car of the Year 2013'.



Executive

Volkswagen CC: Perfectly turned out high-tech, executive luxury. A contemporary, stylish and innovative coupé.

All the luxury you need can also be found in the top of the range Phaeton, and executive comfort in the Passat Saloon and Jetta.



4x4

Touareg: The SUV just got smarter. True four by four capability off-road, and smooth, luxurious and powerful when on it. Features four wheel drive technology, '4MOTION', as standard for optimum road grip, stability and control.

Go anywhere, do anything in our four wheel drive alternatives: Tiguan and Passat Alltrack.

To see these models and configure your ideal Volkswagen, visit: www.volkswagen.co.uk

TECHNICAL SPECIFICATION – PETROL.

| | S 1.2 litre TSI 105 PS | SE 1.4 litre TSI 140 PS |
|---|---------------------------|--|
| Engine | | |
| Engine type | Four cylinder petrol | Four cylinder petrol |
| Cubic capacity, ltrs/cc | 1.2/1197 | 1.4/1390 |
| Max. output, PS ⁽⁰¹⁾ /kW at rpm | 105/77 5000 | 140/103 5600 |
| Max. torque, lbs.ft/Nm at rpm | 129/175 1550-4100 | 162/220 1500 |
| Gearbox | Six speed manual – | Six speed manual Seven speed auto DSG |
| Weights, kgs | | |
| Manual gearbox: | | |
| Unladen weight ⁽⁰²⁾ | 1453 | 1516 |
| Gross vehicle weight | 2080 | 2130 |
| Payload ⁽⁰²⁾ | 702 | 689 |
| Axle load limit: Front | 1040 | 1090 |
| Rear | 1100 | 1100 |
| Automatic DSG gearbox: | | |
| Unladen weight ⁽⁰²⁾ | – | 1536 |
| Gross vehicle weight | – | 2150 |
| Payload ⁽⁰²⁾ | – | 689 |
| Axle load limit: Front | – | 1110 |
| Rear | – | 1100 |
| Trailer load limits, kgs ⁽⁰³⁾ | | |
| Braked 12% incline: | | |
| Manual gearbox | 1300 | 1500 |
| Automatic DSG gearbox | – | 1500 |
| Unbraked: | | |
| Manual gearbox | 720 | 750 |
| Automatic DSG gearbox | – | 750 |
| Towbar load limit | 75 | 75 |
| Max. roof load | 100 | 100 |

| | S 1.2 litre TSI 105 PS | SE 1.4 litre TSI 140 PS |
|--|---------------------------|----------------------------|
| Performance | | |
| Top speed, mph (km/h), where the law permits | | |
| Manual gearbox | 115 (185) | 125 (202) |
| Automatic DSG gearbox | – | 125 (202) |
| Acceleration, secs 0 - 62mph | | |
| Manual gearbox | 11.9 | 9.5 |
| Automatic DSG gearbox | – | 9.5 |
| ABI insurance group, 1 - 50 | 12E | 18E |
| Environmental information | | |
| Fuel grade, minimum | Unleaded, 95 RON | Unleaded, 95 RON |
| Fuel tank capacity, galls/ltrs ⁽⁰⁵⁾ | 13.2/60 | 13.2/60 |
| Official fuel consumption manual gearbox, mpg/ltr per 100km ⁽⁰⁶⁾ | | |
| Urban | 35.3/8.0 | 31.7/8.9 |
| Extra-urban | 51.4/5.5 | 50.4/5.6 |
| Combined | 44.1/6.4 | 41.5/6.8 |
| Official fuel consumption automatic DSG gearbox, mpg/ltr per 100km ⁽⁰⁶⁾ | | |
| Urban | – | 33.2/8.5 |
| Extra-urban | – | 50.4/5.6 |
| Combined | – | 42.8/6.6 |
| Official CO ₂ emission, g/km | | |
| Manual gearbox ⁽⁰⁷⁾ | 149 | 159 |
| Automatic DSG gearbox ⁽⁰⁷⁾ | – | 154 |
| Emission class | EURO 5 | EURO 5 |
| Noise, dB | | |
| Manual gearbox | 73.0 | 71.0 |
| Automatic DSG gearbox | – | 69.0 |

TECHNICAL SPECIFICATION – DIESEL.

| | S, SE 1.6 litre TDI 105 PS BlueMotion Technology | SE, Sport 2.0 litre TDI 140 PS BlueMotion Technology | Sport 2.0 litre TDI 177 PS |
|---|--|--|-------------------------------|
| Engine | | | |
| Engine type | Four cylinder diesel | Four cylinder diesel | Four cylinder diesel |
| Cubic capacity, ltrs/cc | 1.6/1598 | 2.0/1968 | 2.0/1968 |
| Max. output, PS ⁽⁰¹⁾ /kW at rpm | 105/77 4400 | 140/103 4200 | 177/130 4200 |
| Max. torque, lbs.ft/Nm at rpm | 185/250 1500-2500 | 236/320 1750-2500 | 280/380 1750-2500 |
| Gearbox | Six speed manual Seven speed auto DSG | Six speed manual Six speed auto DSG | – Six speed auto DSG |
| Weights, kgs | | | |
| Manual gearbox: | | | |
| Unladen weight ⁽⁰²⁾ | 1544 | 1582 | – |
| Gross vehicle weight | 2180 | 2190 | – |
| Payload ⁽⁰²⁾ | 711 | 683 | – |
| Axle load limit: Front | 1140 | 1150 | – |
| Rear | 1100 | 1100 | – |
| Automatic DSG gearbox: | | | |
| Unladen weight ⁽⁰²⁾ | 1556 | 1603 | 1598 |
| Gross vehicle weight | 2190 | 2200 | 2220 |
| Payload ⁽⁰²⁾ | 709 | 672 | 697 |
| Axle load limit: Front | 1150 | 1160 | 1180 |
| Rear | 1100 | 1100 | 1100 |
| Trailer load limits, kgs ⁽⁰³⁾ | | | |
| Braked 12% incline: | | | |
| Manual gearbox | 1500 | 1500 | – |
| Automatic DSG gearbox | 1500 | 1500 | 1600 |
| Unbraked: | | | |
| Manual gearbox | 750 | 750 | – |
| Automatic DSG gearbox | 750 | 750 | 750 |
| Towbar load limit | 75 | 75 | 75 |
| Max. roof load | 100 | 100 | 100 |

| | S, SE 1.6 litre TDI 105 PS BlueMotion Technology | SE, Sport 2.0 litre TDI 140 PS BlueMotion Technology | Sport 2.0 litre TDI 177 PS |
|--|--|--|-------------------------------|
| Performance | | | |
| Top speed, mph (km/h), where the law permits | | | |
| Manual gearbox | 116 (186) | 126 (203) | – |
| Automatic DSG gearbox | 116 (186) | 125 (201) | 133 (214) |
| Acceleration, secs 0 - 62mph | | | |
| Manual gearbox | 12.8 | 9.9 | – |
| Automatic DSG gearbox | 12.8 | 9.9 | 8.8 |
| ABI insurance group, 1 - 50 | 13E, 13E | 19E, 19E | 24E |
| Environmental information | | | |
| Fuel grade, minimum | Diesel ⁽⁰⁴⁾ | Diesel ⁽⁰⁴⁾ | Diesel ⁽⁰⁴⁾ |
| Fuel tank capacity, galls/ltrs ⁽⁰⁵⁾ | 13.2/60 | 13.2/60 | 13.2/60 |
| Official fuel consumption manual gearbox, mpg/ltr per 100km ⁽⁰⁶⁾ | | | |
| Urban | 51.4/5.5 | 48.7/5.8 | – |
| Extra-urban | 68.9/4.1 | 64.2/4.4 | – |
| Combined | 61.4/4.6 | 58.9/4.8 | – |
| Official fuel consumption automatic DSG gearbox, mpg/ltr per 100km ⁽⁰⁶⁾ | | | |
| Urban | 55.4/5.1 | 46.3/6.1 | 40.4/7.0 |
| Extra-urban | 67.3/4.2 | 61.4/4.6 | 56.5/5.0 |
| Combined | 62.8/4.5 | 54.3/5.2 | 49.6/5.7 |
| Official CO ₂ emission, g/km | | | |
| Manual gearbox ⁽⁰⁷⁾ | 121 | 127 | – |
| Automatic DSG gearbox ⁽⁰⁷⁾ | 119 | 135 | 150 |
| Emission class | EURO 5 | EURO 5 | EURO 5 |
| Noise, dB | | | |
| Manual gearbox | 71.0 | 74.0 | – |
| Automatic DSG gearbox | 69.0 | 70.0 | 68.0 |

TECHNOLOGY.

Exterior dimensions

| | |
|-------------------------------------|-----------|
| Length, mm | 4397 |
| Width – excluding door mirrors, mm | 1794 |
| Width – opened front/rear doors, mm | 3590/3584 |
| Height – with roof bars, mm | 1674 |
| Height – opened bonnet/floor, mm | 1865 |
| Height – opened tailgate/floor, mm | 2060 |
| Wheelbase, mm | 2678 |
| Turning circle, mm | 11200 |

Interior dimensions

| | |
|--|-------------|
| Effective headroom – front, mm (with sunroof) | 1016 (1018) |
| Effective headroom – rear 2nd row, mm (with sunroof) | 973 (954) |
| Effective headroom – rear 3rd row, mm (with sunroof) | 917 (917) |
| Elbow width, front, mm | 1458 |
| Elbow width, rear 2nd row/3rd row, mm | 1484/1297 |

Luggage dimensions

| | |
|---|-------------|
| Length – seats up, mm (5 seat model) | 337 (1142) |
| Length – seats down, mm (5 seat model) | 1791 (1794) |
| Maximum width, mm | 1050 |
| Maximum height – to top of backrest, mm | 572 |
| Floor to roof height, mm (5 seat model) | 988 (1098) |

Max. luggage capacity, ltrs. VDA measuring

method using 200 x 100 x 50mm blocks

| | |
|---|-------------|
| With rear seats upright – 5 seat model (7 seat model) | 695 (121) |
| With rear seats folded – 5 seat model (7 seat model) | 1989 (1913) |

Technical specification notes

- The maximum power output figures are quoted in PS (or Pferdestärke, which is the metric equivalent of horsepower). To convert from metric to imperial horsepower, divide the PS figure by 1.0139.
- Figures are calculated in accordance with manufacturer's criteria. The individual unladen weight depends on the specification of the vehicle, this then reduces the possible payload accordingly. The unladen weight and payload both include the fuel tank 90% full, driver (68kg) and luggage (7kg) in line with EU directive 95/48.
- With increasing altitude the engine performance diminishes. From 1,000m above sea level and for every 1,000m thereafter 10% of the vehicle/trailer weight (trailer weight + gross vehicle weight) must be deducted.
- The use of 100% RME and FAME (bio diesel) is not possible. Forecourt diesel with up to 7% bio diesel content, adhering to standard BS EN 590, can be used in diesel engines. The use of ethanol in forecourt petrol meeting BS EN 228 is allowable.
- The size of the fuel tank is approximate and therefore it may be possible to add a greater amount of fuel than the size of the tank specified, due to the space in the filler neck.
- Fuel consumption and CO₂ figures are obtained under standardised EU test conditions (Directive 93/116/EEC). This allows a direct comparison between different manufacturer models but may not represent the actual fuel consumption achieved in 'real world' driving conditions. More information is available on the Volkswagen web site at www.volkswagen.co.uk and at www.vca.gov.org.
- The weight of a vehicle will influence the level of CO₂ emission it produces; as a result, vehicles with higher levels of specification and factory-fitted options may emit higher levels of CO₂.

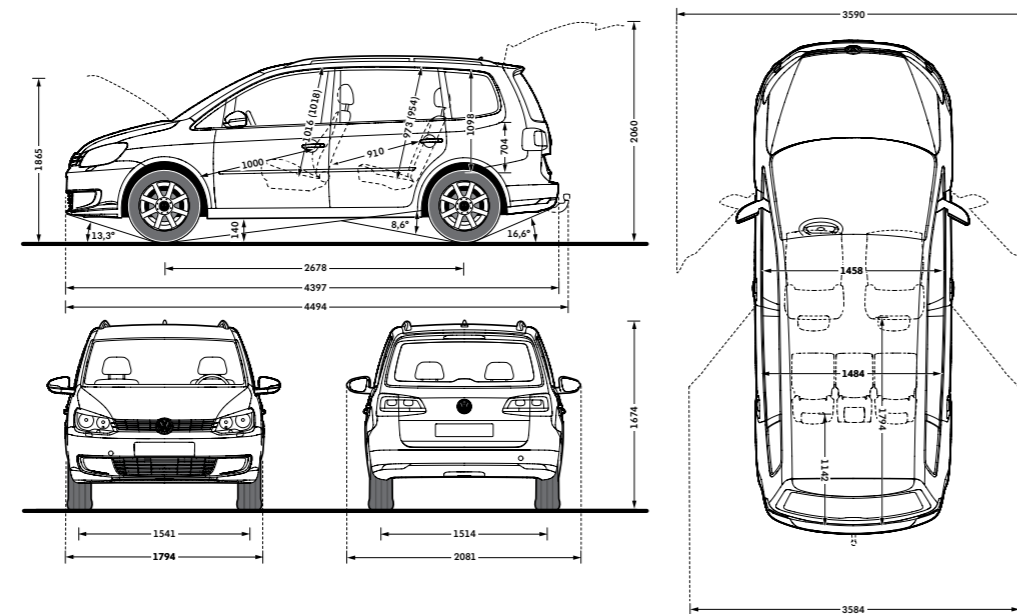


Illustration shown is Touran 5 seat option.

On illustrations, where arrows and figures are shown inside of the vehicle, the measurements are for interior dimensions. Where arrows and figures are shown outside of the vehicle, the measurements are for exterior dimensions.

Engines

- Front transverse-installed engine
- 1.2 litre/105 PS⁽⁰¹⁾ (77 kW) petrol engine: EU5 emissions standard, four cylinder in-line direct injection engine, two valves per cylinder and turbocharger module with electric boost pressure regulation. Available with a six speed manual transmission
- 1.4 litre/140 PS⁽⁰¹⁾ (103 kW) petrol engine: EU5 emissions standard. TBA. Available with a six speed manual or a seven speed automatic DSG transmission
- 1.6 litre/105 PS⁽⁰¹⁾ (77 kW) common rail diesel engine: EU5 emissions standard, four cylinder in-line common rail diesel engine, with four valves per cylinder. Fitted with a turbocharger and a DPF (diesel particulate filter). Available with a six speed manual or a seven speed automatic DSG transmission
- 2.0 litre/140 PS⁽⁰¹⁾ (103 kW) common rail diesel engine: EU5 emissions standard, four cylinder in-line common rail diesel engine, with four valves per cylinder. Fitted with a turbocharger and a DPF (diesel particulate filter). Available with a six speed manual or a six speed automatic DSG transmission
- 2.0 litre/177 PS⁽⁰¹⁾ (130 kW) common rail diesel engine. EU5 emissions standard, four cylinder in-line common rail diesel engine, with four valves per cylinder. Fitted with a turbocharger and a DPF (diesel particulate filter). Available with a six speed automatic DSG transmission

Transmission

- Front wheel drive through asbestos-free single-plate dry clutch. Hydraulic clutch mechanism. Six speed manual, six or seven speed automatic DSG gearbox with double joint half axles (wet clutch on six speed DSG models)
- Electronic differential lock, combined with a hydraulically operated single-plate dry clutch with asbestos-free lining via a six speed auto DSG gearbox
- Six speed manual: 1.2 litre TSI 105 PS, 1.4 litre TSI 140 PS, 1.6 litre TDI 105 PS, 2.0 litre TDI 140 PS
- Six speed automatic DSG: 2.0 litre TDI 140 PS, 2.0 litre TDI 177 PS
- Seven speed automatic DSG: 1.4 litre TSI 140 PS, 1.6 litre TDI 105 PS

Running gear

- ESC (Electronic Stability Control) including EDL (Electronic Differential Lock), ASR (Traction Control) and Countersteer Support
- Front suspension through coil springs with telescopic shock absorbers, all elements integrated in chassis legs
- Rear suspension with gas pressure shock absorbers and separate springs
- Wheel control: front through chassis legs and (lower) triangular wishbones (directionally stabilising steering roll radius)
- Wheel control: rear through four-link suspension with independent wheel suspension
- Front and rear anti-roll bar

Steering

- Electro-mechanical steering rack
- Collapsible, height and lengthways adjustable safety steering column

Brakes

- Electronically controlled Anti-lock Braking System (ABS) with Electronic Brake-pressure Distribution (EBD)
- Diagonal twin-circuit brake system with ventilated front disc brakes and rear disc brakes
- Asbestos-free brake pad
- HBA (Hydraulic Brake Assist)



AN IRRESISTIBLE
COMBINATION OF
STYLE AND PRACTICALITY.



Model shown is Touran Sport with optional 17" 'Oakland' alloy wheels and metallic paint.

VOLKSWAGEN SERVICE.

The Volkswagen Warranty

Three-year Warranty

All Volkswagen passenger cars come with a three-year/60,000 miles warranty, which protects your car against the failure of most technical and electrical components due to manufacturing defects. This comprises a two-year manufacturer's warranty with unlimited mileage plus a further one-year/60,000 miles (whichever is soonest) Retailer Warranty*. Should the mileage exceed 60,000 miles within the first two years, the manufacturer's two-year warranty will still be valid. Full details of the three-year warranty are available from your authorised Volkswagen retailer or repairer.

* All warranty work must be completed by an authorised Volkswagen retailer or repairer.

Three-year Paint Warranty

The paintwork of the Touran is covered against manufacturing defects for a period of three years. Naturally, the Touran must be cared for in compliance with the operating instructions which will be found in your vehicle handbook. Please consult your authorised Volkswagen retailer or repairer for full warranty details.

12-year Body Protection Warranty

The internal body sections and panels of the Touran are covered against rusting through from the inside for 12 years. Naturally, the Touran must be cared for in compliance with the operating instructions. Please consult your authorised Volkswagen retailer or repairer for full warranty details.

Approved Accessories

A comprehensive range of accessories from alloy wheels to carpet mats is available to complement the factory-fitted option list. Volkswagen approved accessories purchased from and fitted by your authorised Volkswagen retailer at the point of vehicle sale will also benefit from the three-year vehicle warranty.

Extended Warranty

If you order the Volkswagen Extended Warranty as an option when buying your new Touran then you get the 100% Volkswagen Warranty and you can continue to enjoy comprehensive Volkswagen protection against many unforeseeable repair costs. Designed to your needs, you can purchase an extra one or two year's warranty up to a maximum of five years or 90,000 miles.

Tax Free Sales

For full details, please contact your authorised Volkswagen retailer.

Service Intervals

Volkswagen are pleased to offer you a choice on how your Touran is serviced. The appropriate selection is entirely dependent on how the car is likely to be driven and its general use. To help you identify which type of service would be most suitable, please refer to the following guide.

The Fixed Service is recommended for vehicles that will cover less than 10,000 miles in 12 months and if the vehicle is likely to be used in the following way:

- Predominantly urban driving, short journeys with frequent cold starts
- Activities regularly producing high engine loading, e.g. frequent hill climbs, driving with vehicle fully loaded and towing
- Uneconomical driving style using high rpms with heavy acceleration and heavy braking

The service intervals for the Fixed Service are as follows:

- Oil change service Every 10,000 miles/1 year (whichever is soonest)
- Interval service Every 20,000 miles/2 years (whichever is soonest)
- Inspection service Every 40,000 miles/3 years (whichever is soonest)

The Flexible Service is recommended for vehicles with a daily mileage of more than 25 miles where the vehicle is driven regularly mainly on longer distance journeys. The vehicle is driven mainly at a constant speed with minimum vehicle and engine loading, minimal towing and driven in an economical manner.

With the Flexible Service the vehicle can cover anywhere between 10,000[†] and a maximum of 18,000[†] miles or 24 months (whichever is soonest) between oil changes. Inspection service is typically in the third year of ownership and thereafter every second year, for vehicles with an approximate annual mileage of 10,000 miles.

[†] Please note that mileages are approximate as the service indicator system uses kilometres as the distance measurement. Please consult your authorised Volkswagen retailer or repairer for advice and full details.

Volkswagen Roadside Assistance

Every new car is registered for Volkswagen Roadside Assistance for one year. This provides vehicle home and roadside recovery in the unlikely event of a breakdown in the UK and Europe (subject to conditions). Volkswagen Roadside Assistance can also be purchased for subsequent years. For full details, please contact your authorised Volkswagen retailer or repairer.

Volkswagen Insurance[‡]

We want you to start enjoying your new car from day one and thanks to Volkswagen Insurance complimentary seven day cover, you can. Call free on 0800 316 7892 (lines are open Monday to Friday 8am – 9pm and Saturday 9am – 5pm), provide a few details and a cover note will be sent to your retailer. They will then tax your car and you can drive it away.

[‡] Volkswagen Insurance is a trading name of Volkswagen Insurance Service (Great Britain) Limited, an appointed representative of Volkswagen Financial Services (UK) Limited, Brunswick Court, Yeomans Drive, Blakelands, Milton Keynes MK14 5LR. Registered in England number 2835230. Volkswagen Insurance is sold, underwritten and administered by Allianz Insurance plc registered in England number 84638. Registered office 57 Ladymead, Guildford, Surrey GU1 1DB. Volkswagen Financial Services (UK) Limited and Allianz Insurance plc are authorised and regulated by the Financial Services Authority. Volkswagen Financial Services (UK) Limited and Allianz Insurance plc are not part of the same corporate group.

Volkswagen Ensurance.

Get three years' Volkswagen Ensurance cover for free.

Another great benefit of being a Volkswagen driver. If your Volkswagen was damaged in an accident, wouldn't you want it fixed by a Volkswagen trained technician using only genuine Volkswagen parts? Ensurance is Volkswagen's accident and repair cover which does exactly that. It works alongside your main comprehensive motor insurance policy no matter who you are insured with, to make sure you get the quality repair and service you would want. If you're involved in an accident or your car is stolen, just one call to us and we'll look after your claim from start to finish ensuring your Volkswagen is restored to the highest standard.

Activate your cover and benefit from:

- A guarantee that your Volkswagen will be repaired in a Volkswagen Insurance approved repairer, by Volkswagen trained technicians, using only genuine Volkswagen parts and paints.
- A dedicated Claims Manager available 24-hours a day to manage your claim, liaising with your insurer and the repairer, so you don't have to.
- Help to recover any uninsured losses using our Legal Expenses Cover.
- Online claims tracking so you can keep up to date with the status of any claim.

Volkswagen Ensurance is free to all Volkswagen customers for three years and it only takes a minute to get cover.

To find out more and to activate your cover, visit volkswagen-ensurance.co.uk

Volkswagen Finance[±]

Volkswagen Finance specialises in providing funding solutions for Volkswagen drivers. Whether your Volkswagen is for private or business use, you can choose from a range of funding options.

- Solutions – a personal contract plan
- Hire purchase
- Lease purchase
- Finance lease
- Contract hire

With all Volkswagen Finance products you can choose a fixed-cost maintenance plan to help you budget for your servicing and maintenance costs.

No matter what finance product you choose, your local Volkswagen retailer will be able to provide you with a personalised quote that could meet your budget and vehicle needs.
[±] Volkswagen Finance is a trading name of Volkswagen Financial Services (UK) Limited. An offer of finance depends on certain conditions. Available to people over 18 in the UK only.

CO₂ Emissions

Increased weight of a vehicle, including higher trim levels and the addition of options will have a detrimental influence on the level of fuel consumption and CO₂ emissions produced.

The CO₂ and fuel consumption figures are obtained from tests on a representative vehicle of the type, conducted and approved in accordance with Council Directive 80/1268/EEC as amended by Directive 1999/100/EC (or later) on the approximation of the laws of the member states relating to the carbon dioxide emissions and the fuel consumption of motor vehicles.

Please Note

Some illustrations in this brochure do not necessarily reflect UK specifications and may not be available. In particular, controls and some items of equipment are positioned differently for the UK.

The specifications contained in this brochure are for information purposes only and are subject to change. If you require any specific feature, you must consult your authorised Volkswagen retailer who is regularly updated with any change in specification. Please check model availability and full specification details with your authorised Volkswagen retailer prior to ordering.

Note: we would like to advise you that telephone calls to Volkswagen Customer Care may be monitored and recorded as part of our training and quality assurance processes. All our monitoring and recording processes meet Ofcom regulations.

The Touran

Volkswagen Information Service. Telephone: 0800 333 666

Internet: www.volkswagen.co.uk

© Volkswagen Group United Kingdom Limited 2013.

Issue: 1 December 2013. Printed in UK.

PVV644TOURAN



facebook.com/VolkswagenUK



[@UKVolkswagen](https://twitter.com/@UKVolkswagen)



youtube.com/UKVolkswagen