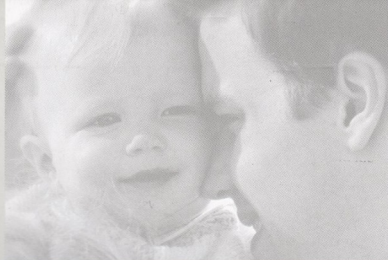


ŠkodaFelicia



Easy to read dials including a rev counter and digital clock.
Height adjustable seat belts.
Central locking (Classic).



Škoda Felicia Popular & Classic

The Felicia has never been better value.

These Popular and Classic models represent the finest standards of engineering and styling. Just drive the Felicia and you will wonder how the price from only £6,000 (1.3 litre hatch Popular) seems possible for such a refined motorcar.

This really is cost-effective motoring.

3 year warranty

3 years roadside assistance

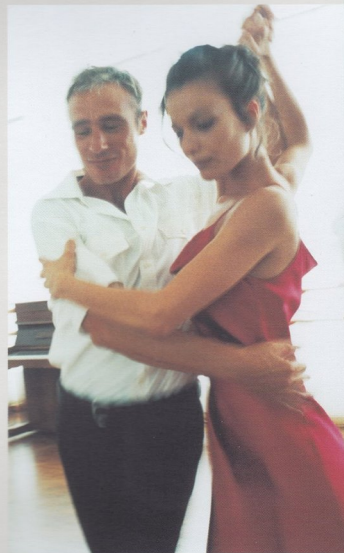
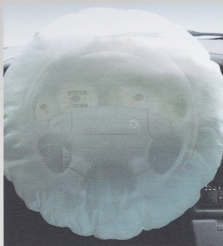
Both the hatch and estate are robust load carriers with practical drop down rear seats and carry five adults in complete comfort. For practical cost effective motoring with plenty of features but no gimmicks, Felicia must be your first choice - Auto Express Magazine did, when they named Felicia 'Top Budget Car of 2000'





Practical features (no gimmicks)

The interior of the Felicia is sumptuous yet practical. Both the hatch and estate have folding rear seats for extra load carrying. The rear seats can also be removed for extra capacity providing 1366 litres of space in the estate. Even load securing points are fitted to keep the load safe (Classic).



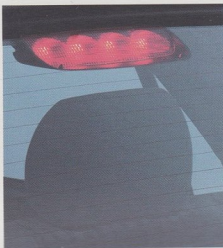
Power steering (Classic)
Driver's airbag (Classic)
Load securing point (Classic)
Estate load spaces with
seats up and folded down.



It's all in the detail

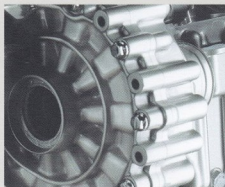
Real quality and attention to detail are both self evident in the Felícia. The practical positioning of the controls and the comfort of the seating for up to five adults make the Felícia a pleasure for both driver and passengers. Even the rear parcel shelf is robust and hides the load from prying eyes in the hatch and estate.

A quality Grundig RDS radio/cassette player helps take the strain out of driving and keeps you informed of traffic hold-ups.

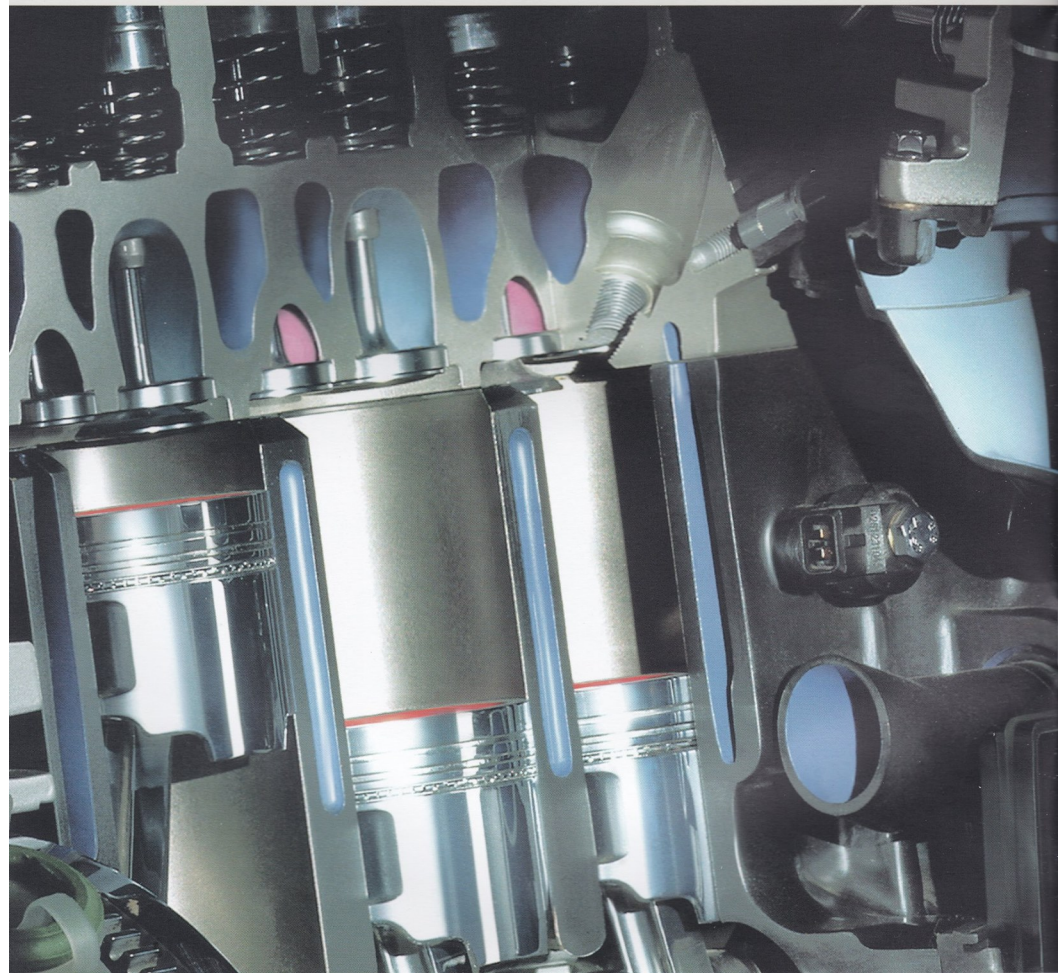


Rear shelf covers the hatch and estate rear load area.
High level brakelight.
Rear passenger space with generous legroom.
Supportive front seats with height adjustable headrests, front and rear.

European engineering



You can choose from a 1.3 litre petrol 50 or 68 bhp or 1.9 diesel engine to power your Felicia. Skoda has developed all engines for optimum performance and durability. Both petrol engines have multi-point fuel injection for excellent torque to reduce gear changes. Both have a five-speed gearbox. Superb engineering and the highest standards of quality control set Felicia apart from other vehicles in this price range.



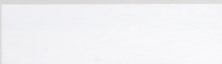
Just add colour

The Felicia is available in the colours shown below. The multi-paint finish will be good for many years to come and contains no heavy metals, so it is also better for the environment.

Metallic paints are only available for the Classic.



Dark Blue Metallic - D7D7



Candy White - 9P9P



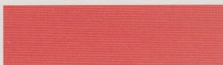
Forest Green Metallic - 1L1L



Petrol Green - D9D9



Nautic Blue - J4J4



Rally Red - H9H9



Sky Blue - F4F4



Diamond Silver Metallic - 1B1B



Fabric swatch

Print processes do not allow for the reproduction of colour.

3 years unlimited mileage warranty

So sure are we of the quality and reliability of the Skoda Felicia that every one comes with a 3 year unlimited mileage warranty. And a 6 year anti-perforation warranty. Applies to Felicias supplied by Skoda UK and purchased through official Skoda UK Retailers only.

Free AA cover for 3 years

Accessed through a dedicated Freephone number, this free back-up service for your Felicia includes Roadside Assistance, Home Start, Relay and Relay Plus.

Exclusive insurance package

Attractive insurance rates are available to all Skoda owners from the Volkswagen Insurance Company (GB) Ltd who have specialised in motor insurance for over 30 years. Call the Quotations Hotline on 0845 602 6028.

Attractive Finance

Skoda Finance will tailor a financial package to suit your monthly budget. Simply ask your retailer which is the best deal for you. Credit is subject to status, written details on request.

Skoda Solutions

Gives you flexibility and peace of mind. Right from the start you'll know the monthly cost, the initial deposit and even the final payment (Guaranteed Minimum Value). Subject to status, written details on request.

Skoda Motability

People in receipt of the Higher Motability Component of the Disability Living Allowance receive special help from Skoda. Preferential prices on low cost contract hire is available through your local approved Motability Retailer. For full details, contact your retailer.

200 Retailers in the UK

So there's bound to be one near you. Which means faster service, help and advice when you need it. Your Skoda retailer will care for and cherish your new Felicia as much as you do. Which is why in recent surveys, Skoda retailers have come out top in Europe for customer care. It's not just that they service and maintain your Felicia to the highest standards, not just that their technicians are specially trained in all aspects of Skoda cars, or that most spares are carried in stock or delivered within 24 hours. It's more that they believe in old fashioned service. You're not just a number to them but a valued customer. Which is why they are more than willing to listen and help with any enquiries or problems you may have.

Technical Specifications and Pricing

		Hatchback			Estate	
Engine		Popular	Classic 1.3	Classic D	Classic 1.3	Classic D
No. of cylinders		4	4	4	4	4
Displacement	cc	1289	1289	1896	1289	1896
Cylinder bore/stroke	mm	75.5 x 72	75.5 x 72	79.5 x 95.5	75.5 x 72	79.5 x 95.5
Max. output	Bhp (kW)/rpm	54 (40)/4500	68 (50)/5000	63 (47)/4300	68 (50)/5000	63 (47)/4300
Max. torque	lb.ft.(Nm)/rpm	73 (99)/2500	79 (106)/2600	91 (124)/2500-3200	79 (106)/2600	91 (124)/2500-3200
Compression ratio		9.5:1	9.8:1	22.5:1	9.8:1	22.5:1
Fuel system		Electronic multi point injection	Electronic multi point injection	Indirect fuel injection	Electronic multi point injection	Indirect fuel injection
Ignition		Electronic microprocessor controlled			Electronic microprocessor controlled	
Lubrication		Circulatory pressure lubrication with full flow oil filter				
Battery		12V/55Ah	12V/55Ah	12V/60A	12V/55Ah	12V/60A
Alternator		14V/70A	14V/70A	14V/90A	14V/70A	14V/90A
Fuel	(Min.octane no. - unleaded)	91	95	Diesel	95	Diesel
Transmission						
Clutch		Mechanically operated, single-plate, dry clutch, asbestos-free lining, 190mm diameter				
Gearbox		5-speed synchronised				
Gear ratios		I-3.462 II-1.957 III-1.31 IV-0.975 V-0.756 R-2.923				
Final drive ratio		3.833	4.118	3.579	4.118	3.579
Running gear						
Front axle		MacPherson struts, lower wishbones, anti-roll bar - 1.9 models				
Rear axle		Trailing arm with torsion crossbeam; anti-roll bar - hatch only				
Springs		Telescopic shock absorbers with spiral springs and progressive additional springs				
Brakes		Hydraulic, dual diagonal split circuit, vacuum servo assistance, dual circuit brake master cylinder				
Front brakes		Disc, 236mm diameter, single piston floating caliper				
Rear brakes		Drum, 200mm diameter, two-shoe				
Hand brake		Mechanical acting on rear wheels				
Steering		Rack and pinion	Power assisted, rack and pinion	Power assisted, rack and pinion	Power assisted, rack and pinion	
Wheels		4.5j x 13" steel	4.5j x 13" steel	4.5j x 13" steel	4.5j x 13" steel	4.5j x 13" steel
Tyres		165/70 R13	165/70 R13	165/70 R13	165/70 R13	165/70 R13
Capacities						
Fuel tank	gallons (l)	9.2 (42)	9.2 (42)	9.2 (42)	9.2 (42)	9.2 (42)
Coolant	pints (l)	10.6 (6)	10.6 (6)	11.1 (6.3)	10.6 (6)	11.1 (6.3)
Engine oil	pints (l)	7.9 (4.5)	7.9 (4.5)	8.8 (5.0)	7.9 (4.5)	8.8 (5.0)
Gearbox and final drive	pints (l)	4.2 (2.4)	4.2 (2.4)	4.2 (2.4)	4.2 (2.4)	4.2 (2.4)
Washer reservoir	pints (l)	5.3 (3)	5.3 (3)	5.3 (3)	5.3 (3)	5.3 (3)
Body						
Type		5-door, 5-seat, steel monocoque			Estate 5-door, 5-seat, steel monocoque	
Air drag coefficient	Cd	0.36	0.36	0.36	0.35	0.35
Area	sq x A m ²	0.68	0.68	0.68	0.67	0.67
Exterior dimensions						
Length	ft(mm)	12' 7" (3883)	12' 7" (3883)	12' 7" (3883)	13' 9" (4237)	13' 9" (4237)
Width	ft(mm)	5' 4" (1635)	5' 4" (1635)	5' 4" (1635)	5' 4" (1635)	5' 4" (1635)
Height	ft(mm)	4' 7" (1415)	4' 7" (1415)	4' 7" (1415)	4' 7" (1420)	4' 7" (1420)
Wheelbase	ft(mm)	8' (2450)	8' (2450)	8' (2450)	8' (2450)	8' (2450)
Ground clearance - loaded	in(mm)	4" (110)	4" (110)	4" (110)	4" (110)	4" (110)
Front track	ft(mm)	4' 8" (1420)	4' 8" (1420)	4' 8" (1420)	4' 8" (1420)	4' 8" (1420)
Rear track	ft(mm)	4' 6" (1380)	4' 6" (1380)	4' 6" (1380)	4' 6" (1380)	4' 6" (1380)
Interior dimensions						
Front seat width	ft(mm)	4' 8" (1420)	4' 8" (1420)	4' 8" (1420)	4' 8" (1420)	4' 8" (1420)
Back seat width	ft(mm)	4' 6" (1398)	4' 6" (1398)	4' 6" (1398)	4' 6" (1398)	4' 6" (1398)
Height of front seats	ft(mm)	3' 2" (967)	3' 2" (967)	3' 2" (967)	3' 2" (967)	3' 2" (967)
Height of back seats	ft(mm)	3' 1" (932)	3' 1" (932)	3' 1" (932)	3' 1" (932)	3' 1" (932)
Boot volume	Cu.ft(l)	9.6 (272)	9.6 (272)	9.6 (272)	16 (447)	16 (447)
Boot, back seats folded	Cu.ft(l)	34.1 (967)	34.1 (967)	34.1 (967)	48 (1366)	48 (1366)

		Hatchback			Estate	
Engine		Popular	Classic 1.3	Classic D	Classic 1.3	Classic D
Weights						
Kerb weight	lbs (kg)	2172 (985)	2172 (985)	2315 (1050)	2260 (1025)	2403 (1090)
Payload	lbs (kg)	959 (435)	959 (435)	948 (430)	959 (435)	948 (430)
Total weight	lbs (kg)	3131 (1420)	3131 (1420)	3263 (1480)	3218 (1460)	3351 (1520)
Roof rack	max lbs. (kg)	110 (50)	110 (50)	110 (50)	110 (50)	110 (50)
Trailer, without brakes	max lbs. (kg)	882 (400)	882 (400)	882 (400)	882 (400)	882 (400)
Trailer, with brakes	max lbs. (kg)	1544 (700)	1985 (900)	1653 (750)	1985 (900)	1653 (750)
Performance						
Maximum speed	mph (km/h)	94 (151)	101 (162)	97 (156)	101 (162)	97 (156)
Acceleration	0-62 mph/0-100km/h-sec	15.5	13.5	16.5	13.5	17.5
CO ₂ emissions	g/km	160	154	157	160	157
Fuel consumption						
Urban	mpg (l/100km)	32.0 (8.8)	30.2 (9.3)	36.7 (7.7)	30.2 (9.3)	36.7 (7.7)
Extra Urban	mpg (l/100km)	56.3 (5.0)	55.3 (5.1)	58.9 (4.8)	55.3 (5.1)	58.9 (4.8)
Combined	mpg (l/100km)	44.1 (6.4)	42.4 (6.7)	48.7 (5.8)	42.4 (6.7)	48.7 (5.8)
External turning circle, between kerbs	ft(m)	34' 3" (10.45)	34' 3" (10.45)	34' 3" (10.45)	34' 3" (10.45)	34' 3" (10.45)

External Equipment	Popular	Classic	Interior Equipment	Popular	Classic
Body coloured bumpers	●	●	Air blending/heating/ventilation system with 3-speed fan		●
Bodyside protective moulding			Air blending/heating/ventilation system with 4-speed fan	●	
Child safety locks on rear doors	●	●	Central locking, operating from both front doors		●
5-speed transmission	●	●	Centre console with cup holders		●
Front spoiler – integrated	●	●	Cigarette lighter		●
Heated rear window	●	●	Cloth upholstery		●
High level third brakelight	●	●	Digital clock	●	
Internally adjustable door mirrors	●	●	Driver's airbag		●
Internally adjustable headlight beam level	●	●	Engine immobiliser	●	
Locking petrol cap with cover flap	●	●	Floor carpet – ribbed	●	●
Metallic Paint		○	Folding rear seat – removable	●	●
Power steering		●	Glovebox with lid	●	●
Rear mounted roof aerial	●	●	Grundig RDS radio/cassette player	●	●
Rear mudflaps	●	●	Height adjustable front and rear head restraints	●	●
Rear window wash/wipe	●	●	Height adjustable front seat belts	●	●
Twin rear fog lights	●	●	Interior boot light	●	●
Twin reversing lights	●	●	Internal side impact protection	●	●
Wheel trim centre caps	●	●	Lashing eyelets in boot		●
Windscreen wipers – 2-speed	●	●	Lights on warning buzzer	●	●
Windscreen wipers – intermittent	●	●	Parcel shelf	●	●
			Remote tailgate release	●	●
			Rev counter	●	●
			Split folding rear seat – removable		□

Standard
 Optional equipment
 Estate model only

Pricing – Hatchback	(on the road)	Pricing – Estate	(on the road)
Felicia Popular	£6,000.00	Felicia Classic 1.3	£7,600.00
Felicia Classic 1.3	£6,800.00	Felicia Classic 1.9D	£8,500.00
Felicia Classic 1.9D	£7,700.00	Optional metallic paint (Classic models only)	£195.00

All Škoda Felicias supplied by Škoda UK come with:

3 years Unlimited Mileage Warranty

3 years AA Roadside Assistance

* (1.9D only)

All prices quoted are inclusive of VAT, all delivery charges, numberplates, petrol/diesel, 12 months road fund licence, new vehicle registration tax (E25) and apply to the United Kingdom only.

The information in this brochure relating to prices, construction, technical details and equipment was valid at the time of going to press. As it is Skoda's policy to introduce improvements with immediate effect, these details are subject to alteration. To receive the latest information on new developments, prices, terms and conditions of finance as well as the

variations in equipment, please contact an authorised Skoda Retailer.

This catalogue is printed on chlorine-free bleached paper and is 100% recyclable.

11/00 Version 03

Internet: www.skoda.co.uk

Welcome to your Skoda Retailer.

