

Rabbit



VW designers and engineers are today's VW workers are proud craftsmen. Anything less wouldn't be Volkswagen.



Space Efficiency

In considering Rabbit as your next car, pay particular attention to its roominess. You will be impressed. Because the Volkswagen Rabbit delivers more total passenger and trunk room than over 40 other cars.

The engine is transversely mounted, and together with space-saving front wheel drive, provides more interior room so there is plenty of headroom and legroom—plus ample room for hips, elbows, shoulders. And the amount of Rabbit's trunk space is absolutely astounding, both in size and accessibility—because of the hatchback design. Other manufacturers certainly recognize a successful design, and are trying to copy Rabbit's original, space-efficient concept.

VW engineers and designers scored the breakthrough that produced one of the most space-efficient passenger cars in the industry.

Volkswagen does it again.



Fuel Efficiency

Volkswagen remains at the forefront of automotive powerplant development.

The most recent triumph? The VW lightweight, high-speed diesel. Equally remarkable and very fuel efficient are our gasoline engines, carburetted or fuel-injected. All our engines are energy-efficient, reliable, durable. And easy to service.

Considerable research also went into the Rabbit to reduce aerodynamic drag. Computer-assisted design added strength without adding weight. Result: an outstanding combination of fuel efficiency, performance and strength.

Volkswagen does it again.



Passive Safety

While the great debate over automotive passive safety continued, Volkswagen engineers and designers went ahead and created an extremely innovative and workable passive restraint system and put it into production. This Volkswagen passive-belt system is standard equipment on the Rabbit "L" two-door and four-door models.

But there is a great deal more to passive safety than occupant restraints, and at Volkswagen we never stop researching, testing, developing and implementing. There is also the need to dissipate impact energy in a crash, to protect driver and passengers in secondary collisions through padding and interior design. All together, an incredible amount of highly advanced work that our engineers attend to.

All of this effort shows everywhere you look. And you sense it as soon as you slip behind the wheel. Passive-safety features may not sell cars in the showroom—but they certainly do out on the road.

It's all part of a total design: Rabbit.
Volkswagen does it again.



innovators.



Active Safety

Rabbit's active safety features help make you a better, more responsive driver. Like visibility, all around. Few cars surpass Rabbit. Like driver seating comfort, with anatomically designed front bucket seats that can be adjusted to fit you "just right." Even such basic automotive engineering concepts as front-wheel drive, transversely-mounted engine, four-wheel independent suspension help make you a better, more "in control" driver.

As you take Rabbit for a road test, you'll ask yourself, "When have I felt so confident, so sure of a car?" "When has driving been such a pleasant experience—instead of a chore?"

Active safety in your new 1980 Volkswagen Rabbit is not a single design feature, but rather a well thought out combination of innovative solutions to automotive design challenges.

Volkswagen does it again.



Human Engineering

Human engineering is a discipline most car-makers talk about, but few pursue with the resources and dedication of Volkswagen.

Take "ergonomics," for example—the design practice of making a car fit you better. Volkswagen ergonomics make it possible for both tall and short people to drive the same Rabbit and be comfortable doing it!

Human engineering finds its way into the most miniscule detail. The smooth way switches work, the way instruments and warning lights are placed so you can observe them at a glance; and the ease of clutch, brake and gearshift operation. When you take a new 1980 Rabbit for a test drive, there's a very good reason everything feels so right, so natural. It's the result of our human engineering.

Today, millions of drivers, worldwide, enjoy Rabbit's impressive ergonomic design advances—big things and little things that provide active, precise driving control.

Of all the areas under discussion here, "Human Engineering" more than all of the others is what makes Rabbit "the Original." And every "copied-design" car an imitation. **Volkswagen does it again.**



Total Performance

Here, the bottom line is total satisfaction with your new Volkswagen Rabbit. Total Performance can mean a great many things—the impressive efficiency of Rabbit's gasoline (or diesel) engine, the exhilarating kind of driving control that Rabbit's four-wheel independent suspension delivers, the solid, proven durability of Rabbit's front-wheel drive.

Total Performance also concerns itself with product quality. The very real kind of solid quality you will be able to see in the fit, the finish and the materials. And the hidden kind of quality that's down underneath the surface—where you may not be able to see it—but where it can deliver toughness, longevity and satisfaction.

In the final analysis, quality cannot be improvised. It must be carefully designed in from the very beginning.

So, when you're looking for total performance and that deep feeling of owner satisfaction that can come only from outstanding product quality—you'll want "the Original."

Volkswagen does it again.





Background: Basic Rabbit hatchback, Lago Blue.
Foreground: Rabbit "C" 2-door hatchback, Sunbrite Yellow.

VW Rabbit. The Original.

Re-invent the automobile? We already did. With the Volkswagen Rabbit. Consider fuel economy. Nobody has yet surpassed the Rabbit Diesel: [41] estimated miles per gallon in the city, and an estimated 55 miles per gallon on the highway*. Even our four-speed gasoline-powered Rabbit gets [25] estimated MPG (estimated city fuel economy) and an estimated highway driving fuel economy of 38 miles per gallon.*

Rabbit also leads over 40 other cars in total roominess. Not only inside, but also in the trunk. Our original passive-restraint system has been a VW exclusive on Rabbit "L" for nearly five years. Front-wheel drive, transverse-mounted engine — new to many other makers — have been part of Rabbit's design since 1974. And



VW Diesel, combustion chamber design.

when it comes to Rabbit's visibility, riding comfort, and the sheer fun of driving, Volkswagen indeed re-invented the car. Over five years ago.

Add to it Volkswagen's traditional high quality of workmanship, finish, and re-sale value at the time of replacement and you begin to appreciate the many important benefits VW ownership provides. Volkswagen today produces the kinds of cars thoroughly engineered to meet

your driving needs for years to come. It's extremely prudent to invest in an "Original".

Volkswagen does it again.

*Based on 1979 EPA estimates. Remember: compare these estimates to the estimated mpg of other cars. Your actual mileage may vary depending on speed, weather conditions, and trip length. Your actual city and highway mileage may be less. 1980 EPA estimate not available at printing time. 1 August 1979.



Rabbit "C" ribbed cloth interior, Tan.



Rabbit "C", 4-door hatchback; Tabasco Red, with optional Exterior Decor Package.

The Original.

Versatile. Practical. Improved.

True to Volkswagen tradition, we don't change for the sake of change. But our engineers are continually testing, improving, refining. For 1980, we have re-designed Rabbit's windshield wiper and washer system, we provide separate warning lights for "brakes" and "oil pressure". We also strengthened the front and rear bumpers. And inside ventilation on the "L" model is more easily adjusted and controlled by operating vent windows. Remember them?

Yet, there are things we needn't change. Our spare tire is "the old-fashioned kind". When you need to use it, it's ready to go. You needn't concern yourself with the potential troubles of an "emergency mini-spare". Concerning versatility, a Rabbit interior can nearly double its cargo-carrying capacity when you fold down



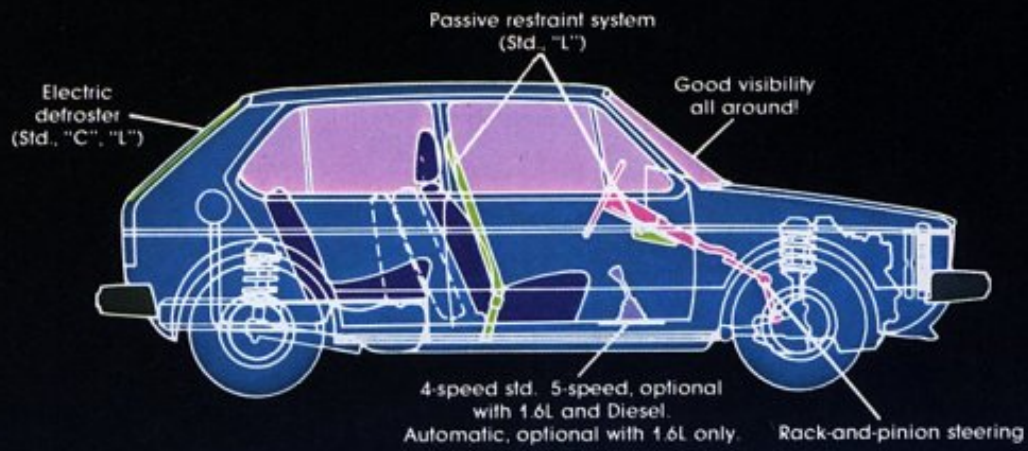
Runs like a Rabbit! Zero-50 mph in 8.3 seconds.
(With optional 1.6L engine; standard transmission.)

the rear seat. And, on the four-door models, the special door-lock feature, on the rear doors, allows you to open the door from the outside only — giving you peace of mind whenever traveling with children. When it comes to saving weight, our engineers designed a cross-flow aluminum radiator that took off more than a few pounds, and to save power — a thermostatically-controlled fan that runs only when needed. (No wasted energy, and quick

warm-ups in cold winter weather.) Every detail of Rabbit design represents a thoroughly researched development. The best way to appreciate it is to drive Rabbit yourself. Through ongoing improvements Rabbit stays well ahead of others and remains an "Original". And that means **better value** for you.



Rabbit "C", Tabasco Red; standard trim. Maroon vinyl interior. Trunk storage capacity: a very generous 15 cubic feet.

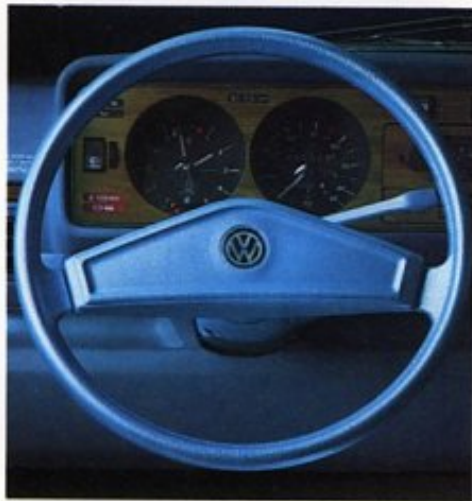


Rabbit "L", 4-door hatchback; Tarpon Blue Metallic.

The Original.

How to distinguish it from the copies.

Consider our exclusive passive-restraint system — one of the many original features of the Rabbit "L" model. Simple to use. Comfortable underway, every way. Effective. Take visibility for example. Rabbit offers you more glass area than many larger cars. You and your passengers will see more, enjoy more. Take compact design. Chances are, Rabbit is not only shorter and more efficient than your present car, but it's also easier to drive and to park, and it handles snow, mud, and country roads with easy assurance. Take ride and handling. Rabbit has front-wheel drive with the engine weight over the driven wheels, a transverse-mounted engine for more interior room, responsive rack-and-pinion steering for precision handling, and four-wheel independent sus-



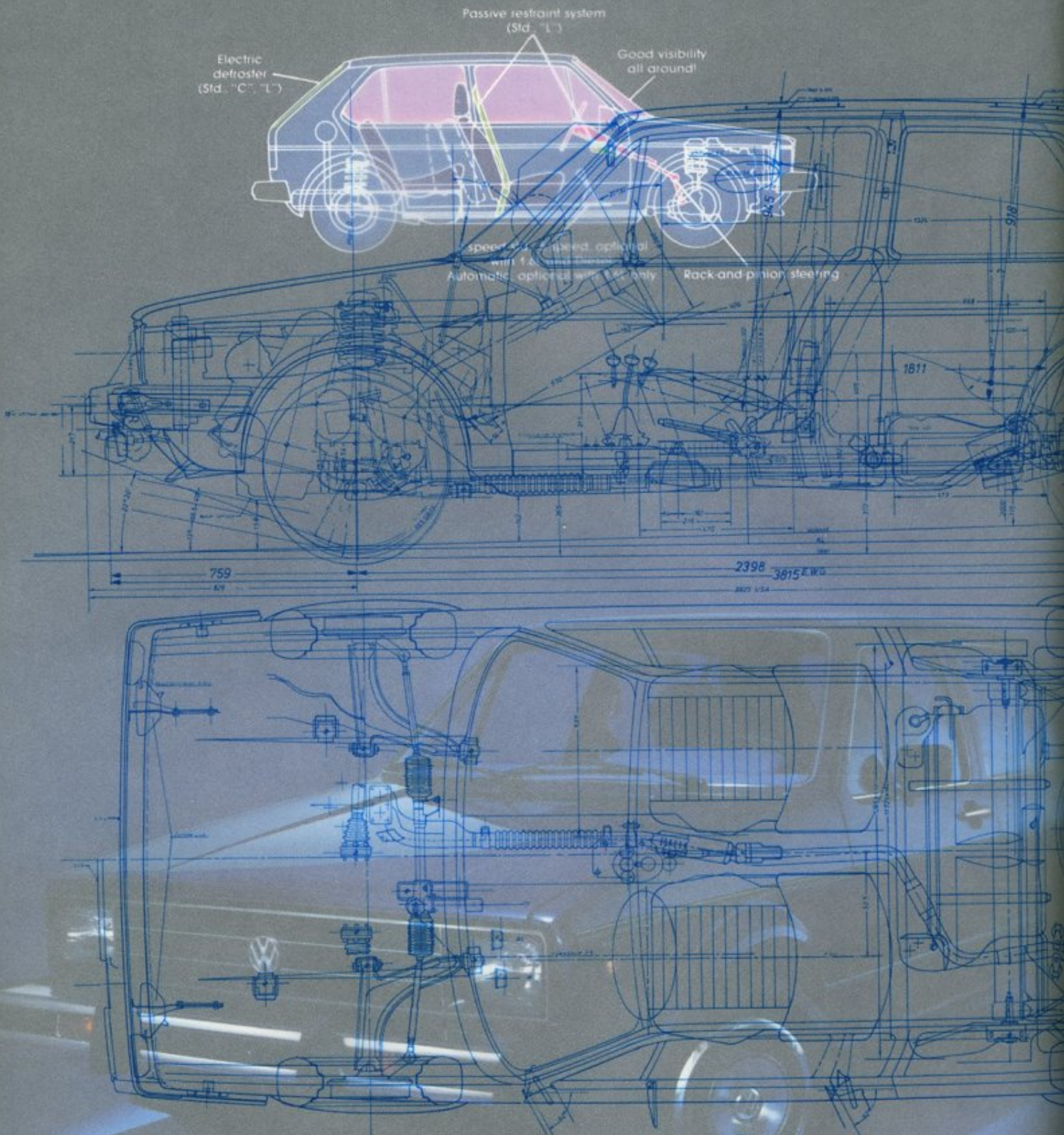
"Rabbit "L", color-coordinated steering wheel, padded.

pension to gentle your ride on all surfaces. These are all features you'll best appreciate by driving Rabbit yourself. Get the feel of both — Diesel and gasoline powered models. Ask about operating front vent windows on Rabbit "L". Examine Rabbit's luggage compartment. Inspect the electric rear-window defroster (standard on Rabbit "C" and "L" models). Discuss the benefits of "negative steering roll radius" with a dealership's knowledgeable salesperson.

Then give Rabbit a close inspection. Check fit and finish. Check under the surface where Volkswagen's thorough engineering can be seen by discerning buyers. Even look at Rabbit's full-size, full-time spare tire. How can you tell "an Original"? Easy. Drive a Rabbit soon. What a difference you'll enjoy!



Rabbit "L", blue velour-cloth interior. Head restraints are adjustable.



Your personal copy of the Original Volkswagen Rabbit.
 In this world of imitations, looks may be deceiving. Insist on a demo drive

Rabbit "L", 4-door hatchback; Tarpon

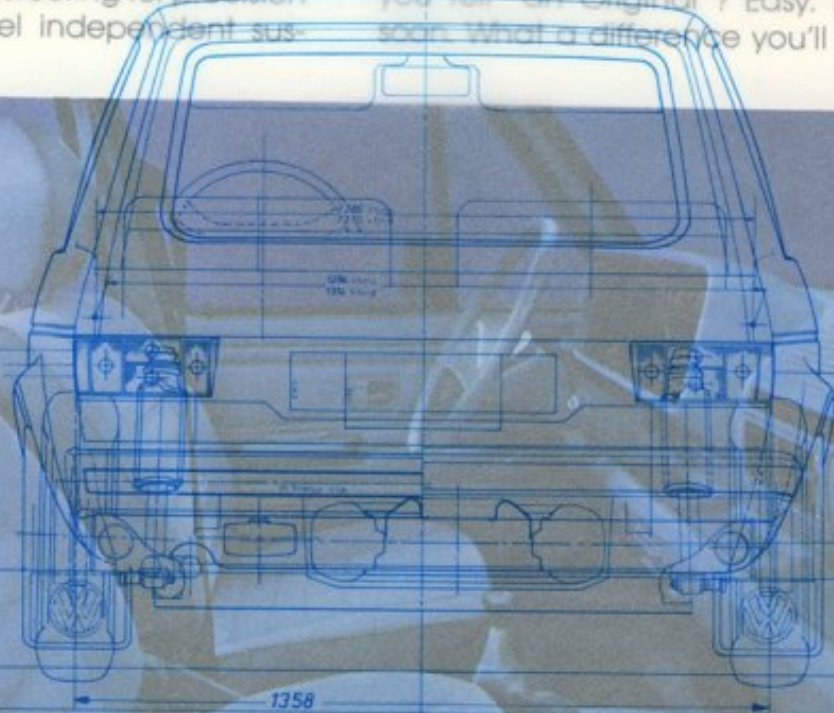
The Original.

How to distinguish it from the copies.

Consider our exclusive passive-restraint system — one of the many original features of the Rabbit "L" model. Simple to use. Comfortable under any, every way. Effective. Take visibility for example. Rabbit offers you more glass area than many larger cars. You and your passengers will see more, enjoy more. Take compact design. Chassis — Rabbit is not only shorter and more efficient than your present car, but it's also easier to drive and to park, and it handles snow, mud, and country roads with easy assurance. Take ride and handling. Rabbit has front-wheel drive with the engine weight over the driven wheels, a transverse-mounted engine for more interior room, responsive rack-and-pinion steering for precision handling, and four-wheel independent sus-

pension to gentle your ride on all surfaces. These are all features you'll best appreciate by driving Rabbit yourself. Get the feel of both — Diesel and gasoline powered models. Ask about operating front vent windows on Rabbit "L". Examine Rabbit's luggage compartment. Inspect the electric rear window defroster (standard on Rabbit "C" and "L" models). Discuss the benefits of "negative steering roll radius" with a dealership's knowledgeable salesperson.

Then give Rabbit a close inspection. Check fit and finish. Check under the surface where Volkswagen's thorough engineering can be seen by discerning buyers. Even look at Rabbit's full-size, full-time spare tire. How can you tell "an Original"? Easy. Drive a Rabbit soon. What a difference you'll enjoy!

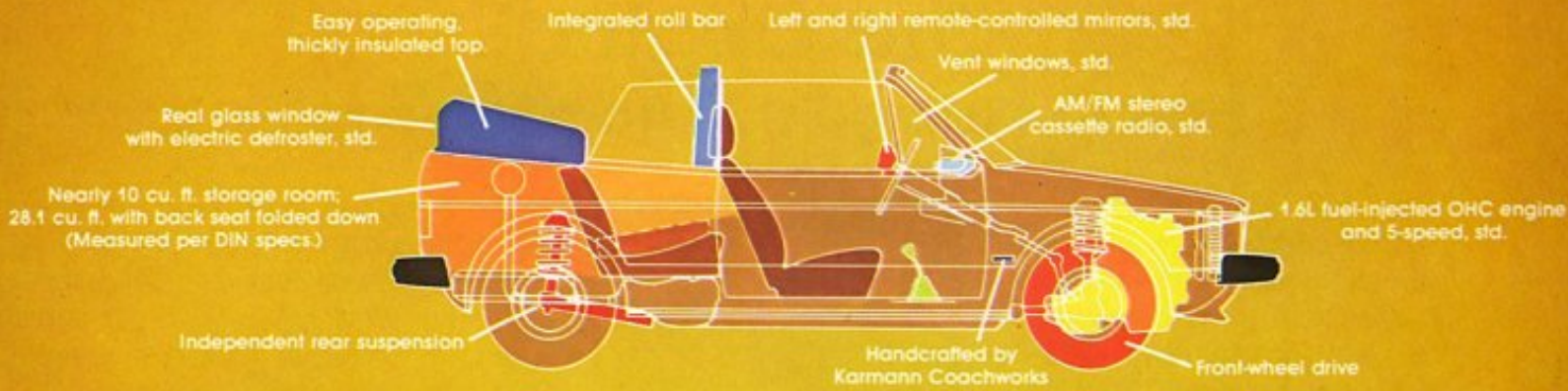


Druckfertig
16.12.82 - Page 12.1 - 13 nicht gezeichnet
16.12.82 - Page 12.2 - 13 nicht gezeichnet
17.12.82 - Page 12.3 - 13 nicht gezeichnet

Rabbit "L", blue velour-cloth interior. Head restraints are adjustable.

Bauteile nach VDA	
1	
2	
3	
4	
5	
6	
7	
8	
9	
10	
11	
12	
13	
14	
15	
16	
17	
18	
19	
20	
21	
22	
23	
24	
25	
26	
27	
28	
29	
30	
31	
32	
33	
34	
35	
36	
37	
38	
39	
40	
41	
42	
43	
44	
45	
46	
47	
48	
49	
50	
51	
52	
53	
54	
55	
56	
57	
58	
59	
60	
61	
62	
63	
64	
65	
66	
67	
68	
69	
70	
71	
72	
73	
74	
75	
76	
77	
78	
79	
80	
81	
82	
83	
84	
85	
86	
87	
88	
89	
90	
91	
92	
93	
94	
95	
96	
97	
98	
99	
100	

Ent 072644



Rabbit 4-seater convertible in Brazil Brown Metallic
Interior: Gazelle leatherette. Top: Sand

Rabbit Convertible.

A brand new, very rare Original.

Today, only a very few convertibles remain. They're fun — but unfortunately most of them are far too small to be practical. So, Volkswagen has engineered a brand new convertible for you. Good looking. Fun to drive. And very generous with space. Room for four people. Room for luggage, even with the top down. Room for all kinds of things with the rear seat folded down. One look and you know you can't wait to own

one. And for a great many more reasons than you might expect. First off: it moves! The 1.6-liter fuel-injected, overhead-cam engine matched to a 5-speed gearbox helps you eat up fun-filled miles with the overdrive fifth gear (0.76-to-1 ratio). The coachwork by Karmann, as expected, is first class. After all, they've been building VW convertibles for over 30 years. The



Integrated roll bar

top fits snug. Keeps out the weather and the wind noise. Easily folded down or back up by just one person. But more fun if done by two.

We make our brand-new convertible only one way: handsomely equipped with all the niceties you would expect — at no extra charge. For example: AM/FM stereo cassette sound system with right and left, in-door, speakers. Front vent windows. Remote-control outside mirrors,

right and left. There's even an electric rear-window defroster. (Can you name another convertible in the world that has it?)

You have your own, personal reasons for wanting one. Since these are all crafted by highly-skilled and unhurried Old World coach builders, our production is necessarily limited.

A very rare Original, indeed!



Rabbit 4-seater convertible: Diamond Silver Metallic exterior. Black leatherette interior. Black top. (Other colors and trims, Page 15.)

Rabbit Options

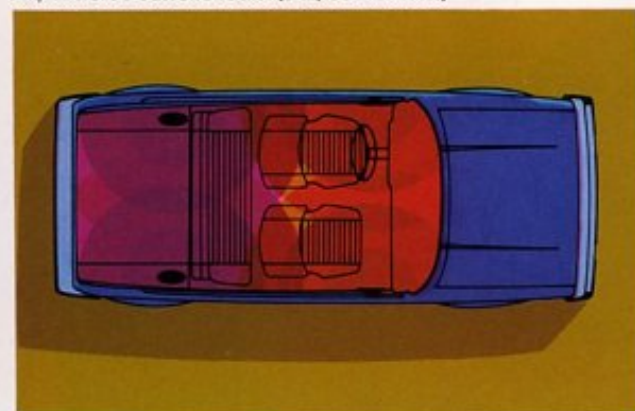
The following are individual, popular Rabbit options and their availability. See also the "option packages" on the opposite page. (Code Number preceding option will enable your VW dealer to provide information in greater detail.)



Steel sunroof, optional on all Rabbit C and L models.



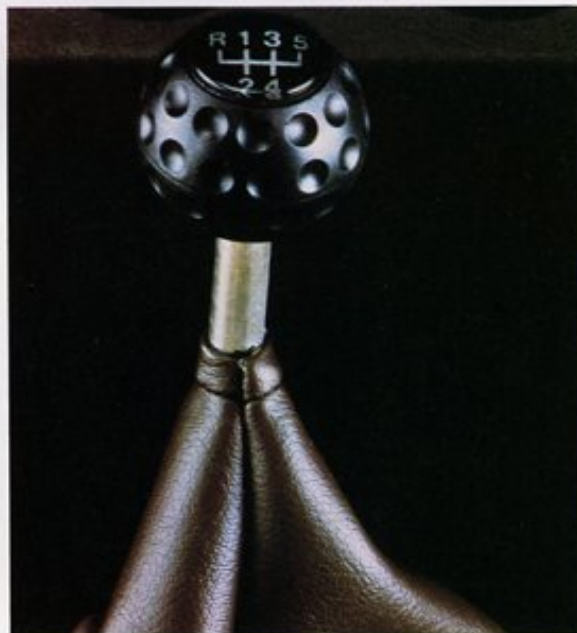
AM/FM stereo cassette radio. (Std., Convertible.)



Four-speaker stereo setup, optional, Rabbit C and L



Air conditioning, optional with Diesel engines, too.



5-speed, optional with 1.6L and Diesel engines.



Automatic transmission, optional w/ 1.6L engine only.

- 044** Passive-restraint system (standard "L"; optional "C" models).
- 096** Radio, AM/FM, push-button (standard "L"; optional "C").
- 453** Radio, AM/FM stereo, speakers in door panels.
- 489** Radio, AM/FM stereo push-button with cassette player (Std., Convertible).
- 494** Dual rear speakers, with stereo balance control.
- 102** Rear window defroster, electric (standard C/L and Conv.; optional base model).
- 128** 155 SR 13, steel-belted radial whitewalls (C/L only).*
- 164** Larger, steel-belted radial tires, 175/70 SR 13 (C/L only). (Require Code 485 or 574 wheels.)
- 952** 175/70 SR 13, steel-belted radials, with raised white letters (optional C/L). (Require Code 485 or 574 wheels).*
- 485** Light-alloy wheels, C/L Convertible only.*
- 222** Diesel engine, 1.5-liter, 48 hp, C/L only (with 63 Amp/hr battery, 55-amp. alternator). N.A., California.
- 249** Automatic transmission (only w/1.6L fuel-injected engine, Code 556, C/L only).
- 425** Rear window wiper and washer, C/L only.
- 481** 5-speed manual transmission (C/L only, with 1.6L or Diesel engines; Std., Convertible).
- 556** 1.6L fuel-injected engine, with 55-amp. alternator, 54 Amp/hr battery (standard for California and Convertible; opt., C/L in 49 states).
- 560** Sunroof, steel, with wind deflector (C/L only).
- 561** Vent windows, front ("C" only; std., "L" and Conv.).
- 565** Sport steering wheel ("C" only).**
- 568** Tinted glass, all around (std., "L" and Convertible).
- 573** Air-conditioning (C/L only with Z60 or Z61, requires Code 568, tinted glass, std., L and Convertible; optional C).**
- 635** Heavy-duty heat exchanger, all models (except with Code 573, air conditioning).
- 930** Remote-control, outside mirror, driver side (standard "L" and Convertible; optional "C").
- 931** Remote-control mirror, passenger side (only with 930; std., Convertible).
- 961/962** Wheel trim rings, with bright hubcaps ("C" only).
- 968** Floor mats, front and rear.

Rabbit Option Packages

A number of options have been grouped into "packages". Some of the items are available individually (see left-hand page), others exist only in these packages. The Package Code Number enables your VW dealer to give you information in greater detail.

Z50 Custom Exterior Package ("C" models only).

- Chrome bumpers
- Rubber impact strip, front/rear
- Bumper guards, front/rear
- Bright rocker-panel molding
- Bright hatchdoor molding
- Bright window molding, all around
- Wheel trim rings.

Z51 Convenience Package ("C" models only).

- Vanity mirror
- Lockable glovebox
- Rear ashtray
- Inside hood release
- 4-way washer/wiper system
- Front/rear floor mats
- Luggage compartment, fully carpeted
- Luggage compartment light, with hatch switch
- Glovebox light
- Engine compartment light.

Z53 Deluxe Decor Group ("L" models only).*

- Rabbit "LS" nameplate
- Luggage compartment light, with hatchdoor switch
- Glovebox light
- Engine compartment light
- Bright wheel-opening moldings
- Dual tone horn
- Vanity mirror
- Remote-control, outside mirror, passenger side
- 4-way washer/wiper system
- Integral armrests
- Seat pads and covers upgraded to crushed velour
- Luggage compartment lined with color-keyed cut-pile carpeting
- Additional sound insulation
- Heavier, 18 oz. cut-pile carpeting throughout, with matching grade on rear package tray.

Z56 Special Instrumentation (C/L models, N/A w/Diesel).*

- Center console with electric quartz chronometer, voltmeter, and engine-oil temperature
- Tachometer in instrument panel
- Instrument cluster panel woodgrain surface with bright edge, dual pod (only on "C"; standard on "L")
- Resettable trip odometer in speedometer dial (only on "C"; standard on "L").

Z60 Heavy-Duty Package (with Diesel engine).

- Heavy-duty radiator
- Heavy-duty alternator, 65-amperes.

Z61 Heavy-Duty Electrical Package (with gasoline engines).

- Heavy-duty radiator cooling fan, 200 W
- Heavy-duty battery, 63-AH rated
- Heavy-duty alternator, 65-amperes.

M948 Quiet Insulation Package (C/L only) • Complete sound insulation, includes additional insulation on luggage compartment floor, insulation on rear wheel-housing with fleece carpeting, additional insulation under rear seat, additional fleece carpeting in luggage compartment.

*Delayed introduction.

Rabbit Specifications

	49-STATE STANDARD ENGINE Not Available in California	CALIFORNIA STANDARD ENGINE Optional, 49-States	DIESEL ENGINE Optional
Number of cylinders	4	4	4
Bore x Stroke (inches) (metric)	3.13" x 2.89" 79.5mm x 73.4mm	3.13" x 3.15" 79.5mm x 80.0mm	3.01" x 3.15" 76.5mm x 80.0mm
Displacement (inches/metric)	89 cu. in./1457cc. (1.5-liters)	97.0 cu. in./1588cc. (1.6-liters)	89.7 cu. in./1471cc. (1.5-liters)
Compression ratio	8.0 to 1	8.2 to 1	23.5 to 1
Valve arrangement	Overhead cam, spur belt driven	Overhead cam, spur belt driven	Overhead cam, spur belt driven
Horsepower, SAE net	62 @ 5400 rpm	76 @ 5500 rpm	48 @ 5000 rpm
Maximum torque, SAE net	76.6 ft. lbs. @ 3000 rpm	California — 82.7 ft. lbs. @ 3200 rpm 49-States — 84.1 ft. lbs. @ 3200 rpm	56.5 ft. lbs. @ 3000 rpm
Fuel requirement	Unleaded gasoline	Unleaded gasoline	No. 2 diesel fuel
Ignition	Electronic (breakerless)	California — Electronic (breakerless) 49-States — Coil/Distributor (conventional)	Compression ignition
Design	Cylinder block in line, cast iron. Cylinder head, aluminum alloy.	Cylinder block in line, cast iron. Cylinder head, aluminum alloy.	Cylinder block in line, cast iron. Cylinder head, aluminum alloy.
Cooling system	Water-cooled. Electric radiator fan, thermostatically-controlled aluminum radiator, cross-flow design, closed and pressurized.	Water-cooled. Electric radiator fan, thermostatically-controlled aluminum radiator, cross-flow design, closed and pressurized.	Water-cooled. Electric radiator fan, thermostatically-controlled radiator, cross-flow design, closed and pressurized.
Fuel system	Single-stage carburetor with automatic choke.	Continuous Injection System (CIS)	Spur belt-driven distributor-injection pump; diesel injectors, "swirl cham- bers" and glow plugs.

ELECTRICAL SYSTEM

Rated voltage	12V
Alternator output	35-Amp (1.5 gasoline engine); 55-Amp (1.6 F.I. engine); 55-Amp (diesel engine)
Battery capacity	12V/45 Amp/hr (1.5 gasoline engine); 12V/54 Amp/hr (1.6 gasoline engine); 12V/63 Amp/hr (diesel engine).

DRIVE TRAIN

Clutch	Single disc, dry
Transmission, manual, standard	4-speed, transverse, front-mounted, fully synchronized transaxle. 1st gear: 3.45 to 1; 2nd gear: 1.94 to 1; 3rd gear: 1.29 to 1; 4th gear: 0.97 to 1; Reverse: 3.17 to 1
Transmission, manual, optional	5-speed. (As 4-speed, with addition of 5th gear, forward: 0.76 to 1)
Transmission, automatic, optional	3-speed, transverse, front-mounted transaxle. 1st gear: 2.55 to 1; 2nd gear: 1.45 to 1; 3rd gear: 1.00 to 1; Reverse: 2.46 to 1
Final drive	Front-wheel drive, double-jointed drive axles with constant-velocity (CV) joints.

CHASSIS AND SUSPENSION

Front suspension	Independent coil/shock absorber struts, negative steering roll radius
Rear suspension	Independent stabilizer axle with coil/shock absorber struts
Chassis	Unitized body/chassis, bolt-on front fenders; two-door hatchback models, four-door hatchback models, and two-door convertible model.

BRAKES AND WHEELS

Service brake	Power-assisted, hydraulic, dual-diagonal, disc, front; drums rear; brake-pressure regulator, rear
Emergency brake	Mechanical, acting on rear drums
Rims	4½J x 13, steel rim (5J x 13, convertible)
Tires	155 x 13 (175 SR13, convertible)
Steering	Rock-and-pinion, double-pivot steering column; 3.9 turns, lock to lock.

*Only on models with automatic transmission

DIMENSIONS

Length/Width/Height	Unladen — 155.3"L x 63.4"W x 55.5"H (55.6", convertible) Metric — 3945mm L x 1610mm W x 1410mm H
Wheelbase (inches/metric)	94.5"/2400mm
Track, front/rear	Inches — 54.7"/53.5"; Metric — 1390mm/1358mm
Turning circle (feet/meters)	31.2 ft/9.5 m (curb to curb)
Ground clearance (laden)	4.9"/125mm
Hatchback opening (ht/w/diag)	51¼"/29½"/48½"

CAPACITIES

Fuel tank	10.6 U.S. gallons (40 liters)
Engine oil	3.7 U.S. quarts (3.5 liters)
Coolant	1.3 U.S. gallons (4.7 liters)
Luggage space (seat up/down)	15.0 cu. ft./22.6 cu. ft. (9.9 cu. ft./28.1 cu. ft., convertible).

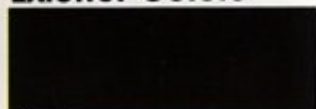
PERFORMANCE

Top speed	Gasoline — 93 mph.; Diesel — 87 mph.
0-50 mph.	8.3 seconds (Basic Rabbit model)
Fuel consumption	1980 EPA estimates not available at printing time; 1 August 1979.

Specifications, standard equipment and options subject to change without notice.

Rabbit Hatchback Colors/Trims

Exterior Colors



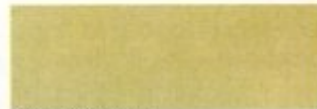
Black



Alpine White



Lago Blue



Mojave Beige



Tabasco Red



Sunbrite Yellow



Mountain Green



Diamond Silver Metallic



Tarpon Blue Metallic



Inca Brown Metallic

Rabbit hatchback models are offered in these exterior and interior color/material selections. Basically, there is a choice of **ten** exterior colors, **four** interior color schemes: • **Basic Rabbit 2-door** Black leatherette interior only • **Rabbit "C" 2-door and 4-door** 4 colors in leatherette, 4 colors in

ribbed cloth • **Rabbit "L" 2-door and 4-door** 4 colors in leatherette, 4 colors in velour • **Rabbit with "LS" trim** 4 colors in crushed velour (an upgraded option for 2-door/4-door "L" models).

Note: Basic Rabbit 2-door is offered only in choice of Tabasco Red, Lago Blue or Alpine White

Interior Fabrics



Maroon leatherette

Maroon interiors available with Black and Diamond Silver Metallic in "C" and "L" models.



Maroon "C", ribbed velour



Maroon "L", solid velour



Maroon "LS", crushed velour*

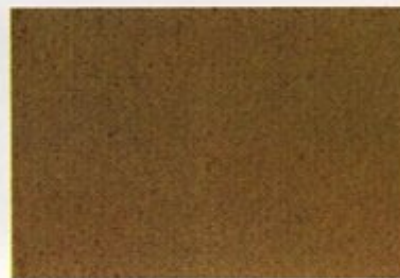


Tan leatherette

Tan interiors available with Mojave Beige, Mountain Green, and Inca Brown Metallic in "C" and "L" models.



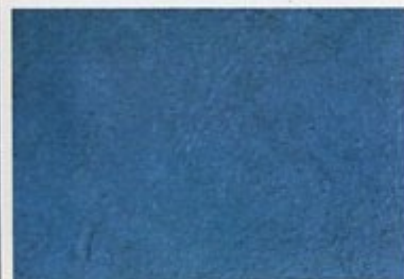
Tan "C", ribbed velour



Tan "L", solid velour



Tan "LS", crushed velour*



Blue leatherette

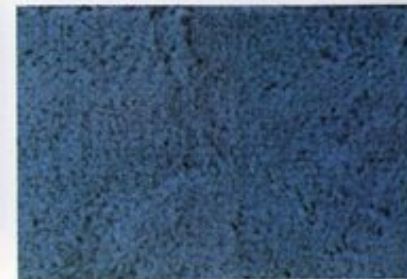
Blue interiors available with Alpine White, Lago Blue, and Tarpon Blue Metallic in "C" and "L" models.



Blue "C", ribbed velour



Blue "L", solid velour



Blue "LS", crushed velour*

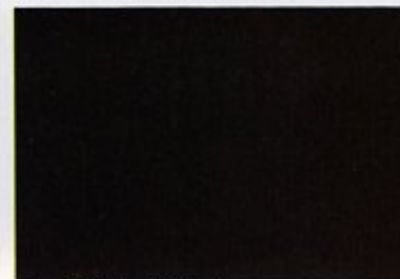


Black leatherette

Black interiors available with Tabasco Red and Sunbrite Yellow in "C" and "L" models. (Black vinyl is only interior offered in Basic Rabbit 2-door hatchback.)



Black "C", ribbed velour



Black "L", solid velour



Black "LS", crushed velour*

Carpeting Rabbit carpeting is color coordinated for all interiors. A quality, cut-pile, 12-oz. grade is standard on all models, in black, maroon, tan or blue. In optional "LS" interior, an 18-oz. grade is included in these same coordinated colors.

Instrument Panel, Interior Trim Panels Rabbit instrument panels are color coordinated with the interior color scheme in black, maroon, tan or blue. Steering wheel/column, inner door panels, and inside trim panels are, likewise, color matched.

For other exterior/interior color combinations, please ask your Volkswagen Dealer for details.

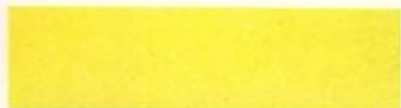
*Rabbit "LS" interior is available only with "LS" Package (an option for all 1980 Rabbit "L" models). See pages 12-13 for details.

Rabbit Convertible Colors/Trims

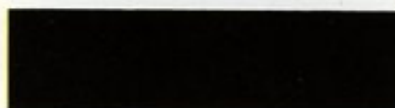
Exterior Colors



Mars Red 80



Lemon Yellow



Black



Alpine White



Colibri Green Metallic



Indiana Red Metallic



Brazil Brown Metallic



Diamond Silver Metallic

Rabbit Convertible is offered in a choice of **eight** exterior colors, **five leatherette** interior trims, as well as **three cloth** interiors and **two** convertible top colors — plus either brown or black dashboard.

Interior Fabrics



Black leatherette.
With Mars Red 80, Lemon Yellow.



Gazelle leatherette.
With Colibri Green Metallic.



Van Dyck leatherette.
With Brazil Brown Metallic.



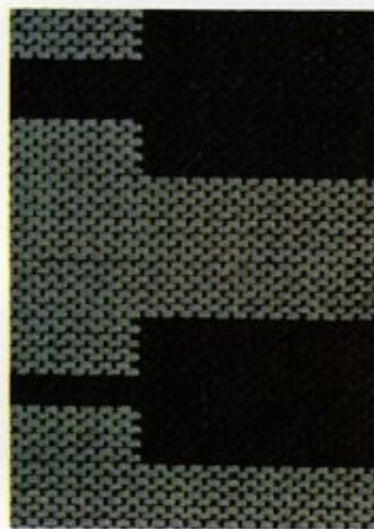
Red leatherette.
With Black, Diamond Silver Metallic.



Ermine White leatherette.
With Alpine White, Indiana Red Metallic.



Convertible Sport Seat, optional.



Black/Silver "Strobe" cloth.
With Mars Red 80, Lemon Yellow.

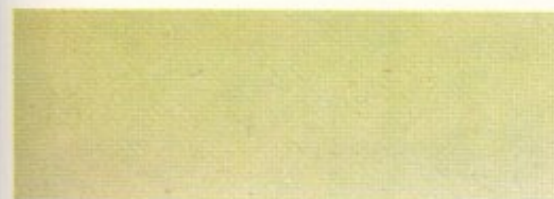


Gazelle/Van Dyck "Strobe" cloth.
With Colibri Green Metallic, Brazil Brown Metallic.



Red/Black "Strobe" cloth.
With Black, Alpine White, Indiana Red Metallic, Diamond Silver Metallic.

Instrument Panel The color will be either Brown or Black, coordinated to blend harmoniously with interior trim colors. **Brown** instrument panel installed with Gazelle and Van Dyck interiors. **Black** with Black, Red, and Ermine White interiors.



Sand



Black

Top Color Availability

Two top colors are offered: Black and Sand. These colors are offered:

Black Top with Mars Red 80, Lemon Yellow, Black, and Diamond Silver Metallic exteriors.
Sand Top with Alpine White, Colibri Green Metallic, Brazil Brown Metallic, and Indiana Red Metallic.

For other exterior/interior color combinations, please ask your Volkswagen Dealer for details.

Colors shown here are as accurate as modern high-speed printing permits. Please ask your Volkswagen dealer to show you actual vehicle and actual paint and trim samples.



Dasher Maintains the tradition of gracious driving. Quality has been engineered in wherever you look. Your choice of fuel-injected gasoline or Diesel power. Front-wheel drive performance. Change the pattern of your driving style. Enjoy the benefits of today's engineering in a modern sedan or station wagon.



Scirocco Aerodynamic styling by Giugiaro. Fuel-injected, overhead-camshaft performance. Real 2+2 seating comfort. Front-wheel-drive handling. Ample luggage room to match your driving lifestyle. Crisp performance. Exclusive look. Quality finish, with coachwork by Karmann.



VW Pickup Truck An exciting new idea in pickup trucks. Handsomely styled. Front-wheel drive. Engineered for rugged versatility. Fun to drive. And, available with gasoline or optional Diesel power. It looks like a truck—but it drives like something else.



Vanagon/Vanagon Camper This all-new Volkswagen has a new freshness! A new name. And a brand-new all-around versatility. All-new Vanagon Camper carries on a long tradition of careful craftsmanship and flawless design. Test-drive Vanagon soon. You'll discover how...

**VOLKSWAGEN
DOES IT
AGAIN**

