

# Ford of Canada

1995  
All-Line  
Catalogue

Featuring 10 Great  
Canadian Drives



# Ford of Canada

At Ford of Canada we recognize that you need information in order to choose your new vehicle.

To help meet that need, we are pleased to offer you this 1995

All-Line Catalogue.

You can count on it

to provide a concise,

comprehensive overview of all 1995 model Ford of Canada cars and light trucks.

As you browse through its pages you'll not only have an opportunity to view every vehicle in our line-up, you'll have their key features and specifications right at your fingertips. We've tried to provide as much technical information as space would allow, including Selected Preferred Equipment Packages which economically group together many of our most popular options. (If you

require more information, I invite you to call us at 1-800-561-FORD.

We'll be pleased to send you additional information.) I'm convinced that the more you know about our 1995 vehicles, the more likely you'll be to

make the choice that is right for you.

Certainly your choice of Ford of Canada cars, minivans and trucks has never been better. Following the launch of the new

Mustang, Aspire and Windstar, we are delighted to introduce our

all-new world cars, the Ford Contour and Mercury Mystique; and along with them the exciting new 1995 Ranger, Explorer and Lincoln Continental.

These vehicles, and indeed our complete vehicle line-up, offer ample proof of our continuing leadership in the areas of quality, performance, engineering and safety.

For your convenience, this catalogue summarizes many major Ford of Canada Vehicle

Programs, including such important initiatives and services as Roadside Assistance (available with every new Ford of Canada vehicle) and Red Carpet Leasing. It also features a complete list of Ford of Canada dealerships from coast to coast.

I think you'll especially appreciate our latest addition to this catalogue -

10 great Canadian drives, one per province, that you will find enjoyable to read and perhaps use to plan your next driving vacation.



If you are not presently shopping for a new vehicle, it's my hope that you will keep this catalogue for future reference.

If you are currently considering a new vehicle purchase, I invite you to take full advantage of this book and learn more about the Ford of Canada product that is right for you. Then visit your nearest Ford of Canada dealership, go for a test drive and experience your

preferred Ford, Lincoln or Mercury vehicle for yourself.

Thank you for your interest in our company and our products. I know you'll enjoy our 1995 catalogue and find it of value now and in the weeks and months to come.

Sincerely,

Mark W. Hutchins,

President and Chief Executive Officer,  
Ford Motor Company of Canada, Limited



# Table of Contents

## Vehicles

Contour	4-7
Crown Victoria	8
Taurus	9
Thunderbird	10
Mustang	11
Probe	12
Aspire	13
Escort	14-15
Mystique	16-19
Grand Marquis	20
Sable	21
Cougar	22
Mark VIII	23
Continental	24-27
Town Car	28-29

Minivan Centre	30
Aerostar	31
Windstar	32-33
Villager	34-35
Explorer	36-37
Ranger	38-39
F-Series	40-42
Bronco	43
Club Wagon	44
Econoline	45

## Ford of Canada

Dealer Listing	58-62
----------------	-------

## Great Canadian Drives

Overview	46-47
British Columbia	48
Alberta	49
Saskatchewan	50
Manitoba	51
Ontario	52
Quebec	53
New Brunswick	54
Nova Scotia	55
Prince Edward Island	56
Newfoundland	57

Vehicle Programs	63
------------------	----



# Contour

Contour LX in Electric Red ▶  
Clearcoat Metallic. Fog lamps  
and body-colour power mirrors  
are standard.



New  
for '95

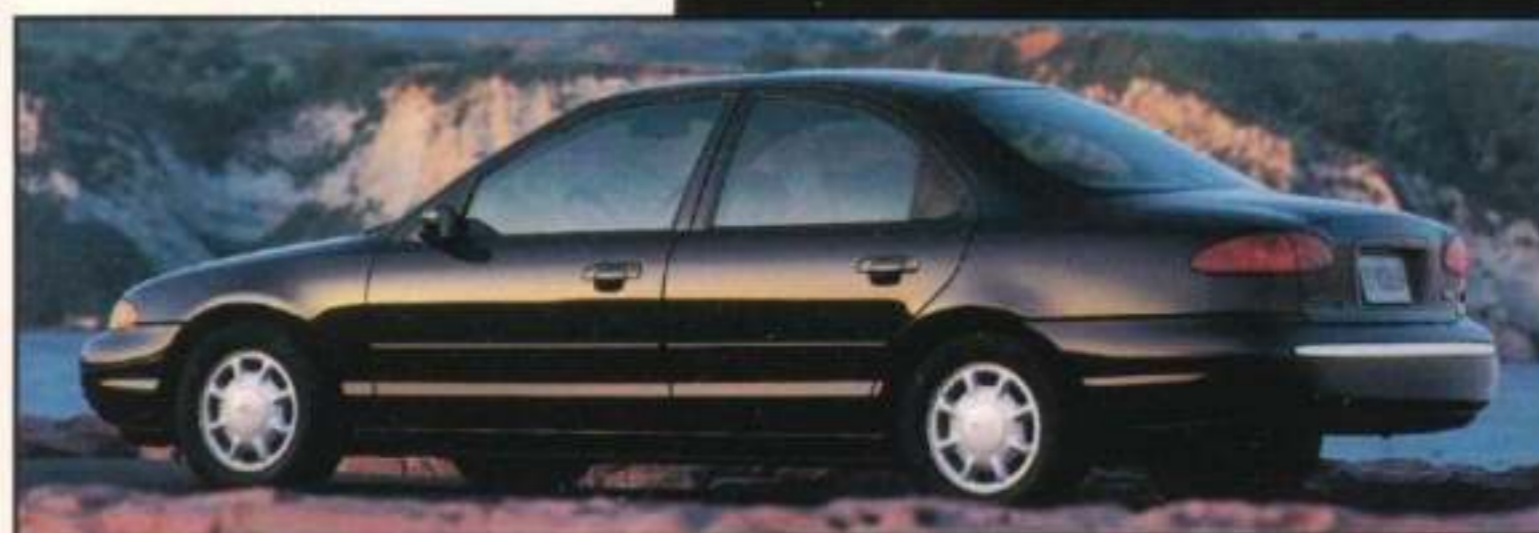
◀ Dual air bags are among Contour's many  
occupant protection features.

▼ Contour SE interior in Pumice with optional  
leather seating surfaces. Reclining front bucket seats  
and full-length centre console are standard.



Contour SE instrument panel and  
interior in Pumice with optional  
leather seating surfaces. ▶

Contour comes with a 3-year/60,000  
km bumper-to-bumper limited  
warranty plus the no-cost Roadside  
Assistance Program. ▼



# Contour

► Contour delivers firm handling and solid stability from its precision engineered suspension and steering systems.



◀ The MicronAir® Filtration System filters out most pollen and dust before they enter the car. The all-new, available ► Duratec 2.5L V-6 engine is the direct descendant of Ford racing technology. Remarkably, it requires no scheduled tune-ups for 160,000 km.



## Dimensions

	mm	(in.)
Wheelbase	2705	(106.5)
Length	4671	(183.9)
Height	1384	(54.5)
Width	1755	(69.1)
Front Leg Room (max.)	1077	(42.4)
Front Head Room	991	(39.0)
Trunk Volume (litres (cu.ft.))	393	(13.9)
Passenger Capacity	5	
Fuel Capacity (litres (imp. gal))	54	(12.0)

## Preferred Equipment Packages

### Contour GL Preferred Equipment Package # 333A

- 2.5 litre Duratec V-6 system (includes 4-wheel disc brakes, P195/65Rx14 tires and tachometer)
- Full length console
- Electronic AM/FM stereo with cassette
- Air conditioning
- Light group
- Power door locks
- Power windows
- Speed control

Contour's trunk has a low lift-over ► height and 393 litres (13.9 cubic feet) of storage space.

▼ Contour LX and SE provide fold-down rear seat backs for added trunk space.



◀ Illuminated interior door handles are among the many features included in the optional Light Group.

## Key Features

	GL	LX	SE	Interior	GL	LX	SE
<b>Exterior</b>				<b>AIR BAGS</b> - driver and front passenger	S	S	S
<b>GLASS</b> - solar-tinted	S	S	S	<b>MICRONAIR® FILTRATION SYSTEM</b> - interior pollen filter	S	S	S
<b>MIRRORS</b> - dual power, heated and remote control	S	S	S	<b>HEAT DUCT</b> - rear passenger compartment	S	S	S
<b>TRUNK</b> - low liftover	S	S	S	<b>CONSOLE</b> - includes cassette stowage, cupholder and rear ashtray	S	-	-
<b>Functional</b>				- full length and includes armrest, CD/cassette stowage, pop-up cupholders and rear ashtray	-	S	S
<b>BRAKES</b> - power front disc/rear drum	S	S	-	<b>LIGHTS</b> - includes illuminated switches and heater controls, courtesy light delay and more	S	S	S
- power 4-wheel disc	-	-	S	<b>LOCKS</b> - rear child proof	S	S	S
- anti-lock braking system	0	0	0	<b>SEATS</b> -			
<b>ENGINE</b> - 2.0 litre Zetec I-4	S	S	-	Front - reclining buckets with full cloth trim	S	S	S
- 2.5 litre Duratec V-6	0	0	S	Rear - 60/40 fold down	-	S	S
<b>SUSPENSION</b> -				<b>RADIO</b> - electronic AM/FM stereo	S	-	-
Front - independent MacPherson with stabilizer bar	S	S	S	- electronic AM/FM stereo with cassette	0	S	S
Rear - Quadralink	S	S	S				
<b>TRANSMISSION</b> - 5-speed manual overdrive	S	S	S				
- 4-speed electronic automatic overdrive	0	0	0				

S = Standard Equipment 0 = Optional Equipment - = Not Available

# Crown Victoria

Crown Victoria LX in Medium Willow Green Clearcoat Metallic. ▶



The Crown Victoria LX interior in Saddle, with optional leather seating surfaces. ▶



Crown Victoria has a spacious, deep-well trunk with a low lift-over height. ▶



## Dimensions

	mm	(in.)
Wheelbase	2905	(114.4)
Length	5384	(212.0)
Height	1443	(56.8)
Width	1976	(77.8)
Front Leg Room (max.)	1080	(42.5)
Front Head Room	1001	(39.4)
Trunk Volume (litres (cu.ft.))	583	(20.6)
Passenger Capacity	6	
Fuel Capacity (litres (imp. gal))	75	(16.6)

## Preferred Equipment Packages

### Crown Victoria LX Preferred Equipment Package # 211A

- Anti-lock braking system with electronic traction assist
- Electronic AM/FM stereo with cassette
- Light decor group
- Power lock group
- Leather wrapped steering wheel
- 12-spoke cast aluminum wheels
- Cornering lamps
- Speed control
- Illuminated entry

## Key Features

Exterior	LX +
<b>GLASS</b> - solar-tinted	S
<b>MIRRORS</b> - dual heated, power remote control	S
<b>WHEEL COVERS</b> - deluxe	S
<b>Functional</b>	
<b>BRAKES</b> - power 4-wheel disc	S
- anti-lock braking system with electronic traction assist	O
<b>ENGINE</b> - 4.6 litre overhead cam SEFI V-8	S
<b>SUSPENSION</b> -	
Front - nitrogen gas-pressurized shock absorbers	S
Rear - 4-bar link coil spring with rear stabilizer bar	S
<b>TRANSMISSION</b> -	
- electronic 4-speed automatic with overdrive lockout	S
<b>Interior</b>	
<b>AIR BAGS</b> - driver and front passenger	S
<b>AIR CONDITIONING</b> - manual	S
<b>GLOVE BOX</b> - illuminated with lockable large bin and dampened door	S
<b>LOCKS</b> - child safety latches on rear doors	S
<b>SEATS</b> -	
Front - luxury cloth split bench with power driver's seat	S
<b>STEERING WHEEL</b> - tilt, two spoke, colour-keyed	S
<b>RADIO</b> - electronic AM/FM stereo	S

S = Standard Equipment O = Optional Equipment - = Not Available

+ Crown Victoria is also available in S and base models.

# Taurus

▼ Taurus offers 5 or 6 passenger seating. Opal Grey leather seating surfaces are optional.



▲ The new Taurus SE Sports Sedan in Champagne Clearcoat Metallic.

## Key Features

Exterior	LX Sedan +
<b>MIRRORS</b> - dual electric remote control with tinted mirror	S
<b>PAINT STRIPE</b> -	S
<b>WHEELS</b> - bright machine cast aluminum	S
<b>Functional</b>	
<b>BRAKES</b> - front drum/rear disc	S
- anti-lock braking system	O
<b>ENGINE</b> - 3.0 litre sequential EFI V-6	S
<b>SUSPENSION</b> -	
Front - independent MacPherson with nitrogen gas pressurized struts and stabilizer bar	S
Rear - independent MacPherson with nitrogen gas pressurized struts and stabilizer bar	S
<b>TRANSMISSION</b> - 4-speed automatic overdrive	S
<b>Interior</b>	
<b>AIR BAGS</b> - driver and passenger	S
<b>AIR CONDITIONING</b> - manual	S
<b>CONSOLE</b> - includes armrest with storage and beverage container holder	S
<b>LOCKS</b> - power with child-proof latches	S
<b>SEATS</b> -	
Front - 6-way power, dual recliner buckets	S
Rear - bench with folding centre armrest	S
<b>STEERING WHEEL</b> - leather wrapped	S
<b>RADIO</b> - electronic AM/FM stereo with dual access remote controls on instrument panel	S

S = Standard Equipment O = Optional Equipment - = Not Available

+ Taurus is also available in an LX wagon, GL sedan and wagon, SE sedan and a sporty SHO sedan.

## Dimensions

▲ The roomy Taurus GL Wagon in Champagne Clearcoat Metallic.



	Sedan mm (in.)	Wagon mm (in.)
Wheelbase	2692 (106.0)	2692 (106.0)
Length	4877 (192.0)	4905 (193.1)
Height	1374 (54.1)	1410 (55.5)
Width	1808 (71.2)	1808 (71.2)
Front Leg Room (max.)	1059 (41.7)	1059 (41.7)
Front Head Room	973 (38.3)	980 (38.6)
Trunk Volume (litres (cu.ft.))	510 (18.0)	2296 (81.1)*
Passenger Capacity	5	6
Fuel Capacity (litres (imp. gal))	60 (13.3)**	60 (13.3)

\* With rear seats folded down

\*\* 69 litres (15.3 imp. gal.) on SHO

## Preferred Equipment Packages

### Taurus LX Preferred Equipment Package # 181A

- Anti-lock braking system
- Electronic AM/FM stereo with cassette
- Speed control
- Light group
- Power door locks and side windows
- Decklid, liftgate and fuel door releases

# Thunderbird



◀ The optional 4.6 litre V-8 is one of the most advanced engines in its class.



▼ Thunderbird LX in Champagne Clearcoat Metallic.



▲ Thunderbird Super Coupe interior shown in Opal Grey.

## Dimensions

	mm	(in.)
Wheelbase	2870	(113.0)
Length	5088	(200.3)
Height	1334	(52.5)*
Width	1847	(72.7)
Front Leg Room (max.)	1080	(42.5)
Front Head Room	968	(38.1)
Trunk Volume (litres (cu.ft.))	428	(15.1)
Passenger Capacity	5	
Fuel Capacity (litres (imp. gal))	68	(15.0)

\* 1346 (53.0) for Super Coupe

## Preferred Equipment Packages

### LX Preferred Equipment Package # 146A

- Electronic semi-automatic temperature control
- Cast aluminum wheels
- P215/70R15 BSW tires

## Key Features

Exterior	LX +
<b>GLASS</b> - solar-tinted windshield and side glass	S
<b>MIRRORS</b> - dual electric remote control	S
<b>WHEEL COVERS</b> - styled road	S
<b>Functional</b>	
<b>BRAKES</b> - front disc/rear drum	S
- anti-lock braking system	O
<b>ENGINE</b> - 3.8 litre V-6 with multiple port sequential EFI	S
<b>SUSPENSION</b>	
<i>Front</i> - long spindle SLA with stabilizer bar, variable rate springs, lower control arm and tension	S
<i>Rear</i> - independent, attached to isolated sub-frame with stabilizer bar and variable rate springs	S
<b>TRANSMISSION</b>	
- 4-speed electronic automatic	S
<b>Interior</b>	
<b>AIR BAGS</b> - driver and passenger	S
<b>AIR CONDITIONING</b>	
- manual with rotary controls	S
<b>CONSOLE</b> - full length with floor mounted shift and storage	S
<b>LOCKS</b> - power	S
<b>SEATS</b>	
<i>Front</i> - luxury, cloth buckets, with driver's 6-way power	S
<i>Rear</i> - includes centre armrest	S
<b>STEERING WHEEL</b> - tilt, luxury leather wrapped	S
<b>RADIO</b> - electronic AM/FM stereo with cassette	S

S = Standard Equipment O = Optional Equipment - = Not Available

+ Thunderbird is also available in a Super Coupe model.

# Mustang



▲ Mustang GT interior in Black.  
◀ Mustang GT in Bright Blue.



## Key Features

Exterior	Mustang GT+
<b>CONVERTIBLE TOP</b> - power retractable with semi-hard boot	S*
<b>MIRRORS</b> - dual electric remote control	S
<b>SPOILER</b> - rear single wing	S
<b>Functional</b>	
<b>BRAKES</b> - power 4-wheel disc	S
- anti-lock braking system	O
<b>ENGINE</b> - 5.0 litre high output V-8	S
<b>SUSPENSION</b>	
<i>Front</i> - modified MacPherson struts with stabilizer bars and gas pressurized struts	S
<i>Rear</i> - coil-spring four bar link with gas pressurized struts	S
<i>GT Suspension Package</i> - includes variable rate coil springs, Quadra-Shock rear suspension with strut tower brace	S
<b>TRANSMISSION</b> - 5-speed manual	
- automatic electronic 4-speed	O
<b>Interior</b>	
<b>AIR BAGS</b> - driver and front passenger	S
<b>AIR CONDITIONING</b> - manual	
<b>CONSOLE</b> - includes armrest, integral storage bin, cupholder and CD/cassette storage	S
<b>LOCKS</b> - power	S
<b>SEATS</b>	
<i>Front</i> - cloth trim GT buckets with power lumbar support	S
<i>Rear</i> - split fold-down	S
<b>STEERING WHEEL</b> - tilt, leather wrapped	S
<b>RADIO</b> - 24 watt electronic AM/FM stereo with 4 speakers	S

S = Standard Equipment O = Optional Equipment - = Not Available

+ Mustang and Mustang GT are available in both sedan and convertible models.

\* Convertible models only.



5.0-litre ▶ Mustang GT convertible in Black Clearcoat.

## Dimensions

	mm	(in.)		mm	(in.)
Wheelbase	2573	(101.3)	Front Head Room	970	(38.2)
Length	4610	(181.5)	Trunk Volume (litres (cu.ft.))	308	(10.9)*
Height	1346	(53.0)	Passenger Capacity	4	
Width	1983	(78.1)	Fuel Capacity (litres (imp. gal.))	58	(12.8)
Front Leg Room (max.)	1079	(42.5)			

\* Convertible trunk volume 240 (8.5)

## Preferred Equipment Packages

### Mustang GT Preferred Equipment Package #081A

- Anti-lock braking system
- Air conditioning
- Speed control
- Dual illuminated visor mirrors
- Electronic AM/FM stereo/cassette with premium sound
- Power driver's seat

# Probe

▶ Probe in Seafoam Green Clearcoat Metallic.



Probe GT is equipped with a 24-valve DOHC 2.5 litre V-6 engine. ▶



▲ Probe's interior includes performance instrumentation.

## Key Features

### Exterior Probe GT +

- MIRRORS - dual electric remote control S
- SPOILER - rear decklid O
- WHEELS - 16" 5-spoke aluminum S

### Functional

- BRAKES - power four-wheel disc S
- anti-lock braking system O
- ENGINE - 2.5 litre DOHC 6-cylinder (V6) S
- SUSPENSION -
- Front - MacPherson strut, stabilizer bar S
- Rear - Quadralink, stabilizer bar S
- Sport suspension S
- TRANSMISSION - 5-speed manual S
- 4-speed automatic O

### Interior

- AIR BAGS - driver and front passenger S
- AIR CONDITIONING - manual O
- CONSOLE - full centre with folding armrest and cupholder S
- INSTRUMENT CLUSTER - includes trip odometer, tachometer, fuel gauge, water temperature gauge, oil pressure gauge and volt meter S
- SEATS -
- Front - dual reclining buckets with driver side power lumbar support, bolster adjustment and GT sport trim S
- Rear - 50/50 fold down S
- STEERING WHEEL - leather-wrapped S
- RADIO - electronic AM/FM stereo with clock and four speakers S

S = Standard Equipment O = Optional Equipment - = Not Available

+ Probe is also available in a base model.

## Preferred Equipment Packages

### Probe GT Preferred Equipment Package # 056A

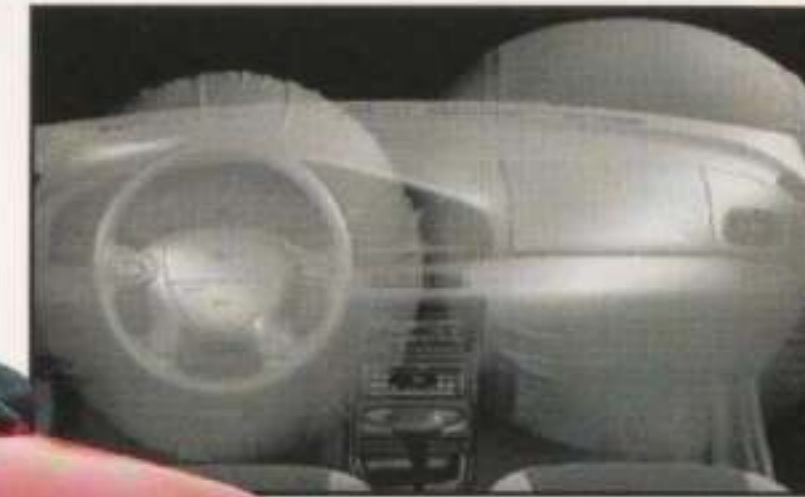
- Air conditioning - manual
- Electronic AM/FM stereo with cassette, clock and premium sound
- Interval windshield wipers
- Tilt steering wheel
- Remote fuel door/liftgate release
- Speed control
- Colour-keyed bodyside mouldings

## Dimensions

	mm	(in.)	mm	(in.)
Wheelbase	2611	(102.8)	Trunk Volume (litres (cu.ft.))	509 (18)*
Length	4538	(178.7) <sup>(1)</sup>	Passenger Capacity	4
Height	1311	(51.6)	Fuel Capacity (litres (imp. gal))	58 (12.9)
Width	1773	(69.8)		
Front Leg Room (max.)	1095	(43.1)	* With rear seat backs up.	
Front Head Room	960	(37.8)	(1) 4559 (179.5) on GT.	

# Aspire

Aspire 3-Door shown in Vibrant Red. ▶



▲ Aspire's dual air bags are standard equipment.

## Key Features

### Exterior Aspire SE +

- MIRRORS - dual manual remote S
- SPOILER - front S
- rear liftgate S
- WHEELS - styled steel with full argent covers S

### Functional

- BRAKES - power front disc/ rear drum S
- anti-lock braking system O
- ENGINE - 1.3 litre SOHC I-4 S
- SUSPENSION -
- Front - Independent MacPherson strut with isolated front suspension and engine subframe S
- Rear - torsion beam "semi-independent" S
- TRANSMISSION - 5-speed manual overdrive S
- 3-speed automatic O

### Interior

- AIR BAGS - driver and front passenger S
- AIR CONDITIONING - manual O
- CONSOLE - full length with dual cupholders S
- GAUGES - fuel and water temperature, trip odometer, tachometer S
- SEATS -
- Front - high-back reclining sport cloth and vinyl S
- Rear - split fold-down rear seat S
- RADIO - Electronic AM/FM stereo with clock and cassette O

S = Standard Equipment O = Optional Equipment - = Not Available

+ Aspire is also available in a base model.

## Dimensions

	3-Door		5-Door	
	mm	(in.)	mm	(in.)
Wheelbase	2303	(90.7)	2385	(93.9)
Length	3881	(152.8)	3959	(155.9)
Height	1412	(55.6)	1412	(55.6)
Width	1663	(65.5)	1661	(65.4)
Front Leg Room (max.)	1056	(41.6)	1056	(41.6)
Front Head Room	960	(37.8)	970	(38.2)
Trunk Volume (litres (cu.ft.))	421	(14.9)*	481	(17.0)*
Passenger Capacity	4		4	
Fuel Capacity (litres (imp. gal))	37	(8.3)	37	(8.3)

\*With rear seat up.

## Preferred Equipment Packages

### Aspire SE Preferred Equipment Package # 036A

- Electronic AM/FM stereo with clock and cassette
- Rear window wiper/washer
- Manual air conditioning
- Anti-lock braking system

▲ Aspire SE 3-Door in Crystal White.





# Escort



▲ Escort LX with Sport/Profile Appearance Group.



▼ Escort GT in Oxford White.

## Key Features

Exterior	3-Door, 4-Door	
	5-Door LX	Wagon+
MIRRORS - driver's side remote control	S	S
MOULDINGS - body coloured, bodyside protection	S	S
WHEELS/WHEEL COVERS - semi-style steel wheel with full luxury wheel cover	S	S
<b>Functional</b>		
BRAKES - front disc/ rear drum	S	S
ENGINE - 1.9 litre SEFI I-4*	S	S
SUSPENSION - 4-wheel independent	S	S
TRANSMISSION - 5-speed manual	S	S
- 4-speed automatic	O	O
<b>Interior</b>		
AIR BAGS - driver and passenger	S	S
AIR CONDITIONING - manual	O	O
CONSOLE - includes forward bin and cupholders	S	S
LOCKS - rear childproof (excluding 3-door)	S	S
<b>SEATS -</b>		
Front - low back cloth/vinyl reclining buckets	S	S
Rear - 60/40 split fold	S	S
STEERING WHEEL - soft 4-spoke	S	S
RADIO - electronic AM/FM stereo with digital clock	S	S

S = Standard Equipment O = Optional Equipment - = Not Available

\* 1.8L DOHC 16 valve EFI I-4 in GT.

+ Escort is also available in a sporty 3-door GT model.

## Dimensions

	Sedan*		Wagon	
	mm	(in.)	mm	(in.)
Wheelbase	2499	(98.4)	2499	(98.4)
Length	4318	(170.0)	4351	(171.3)
Height	1333	(52.5)	1361	(53.6)
Width	1694	(66.7)	1694	(66.7)
Front Leg Room (max.)	1059	(41.7)	1059	(41.7)
Front Head Room	975	(38.4)	975	(38.4)
Trunk Volume (litres (cu.ft.)) <sup>(1)</sup>	498	(17.6)	866	(30.6)
Passenger Capacity	5		5	
Fuel Capacity (litres (imp. gal))	45	(9.9)	45	(9.9)

\* Dimensions may vary slightly between 3, 4 and 5-door sedans.

(1) With rear seat up.

## Preferred Equipment Packages

### Escort LX Preferred Equipment Package # 016A

- Power steering
- Manual air conditioning
- Light and convenience group
- Remote decklid release
- Sport/Profile Appearance Group
  - Bright Aluminum 14" wheels
  - Liftgate spoiler
  - Leather wrapped steering wheel
  - Deluxe luggage rack (wagon)

▲ Enjoy great choice for one low price! There are three "One Price" Escort LX models to choose from: the 4-Door Sedan, 5-Door Sedan and Wagon. Left to right: Escort LX Wagon, LX 4-Door Sedan, LX Sport 3-Door Sedan and LX 5-door Sedan. A Sport/Profile Appearance Group is available for each of these Escort LX models. The Group includes Bright Aluminum 14" wheels, liftgate spoiler, leather wrapped steering wheel and a deluxe luggage rack (wagon).

A centre console with cupholders is standard equipment. ▶



◀ The split/fold rear seat provides extra cargo space.







# Mystique

Mystique LS in Medium Willow Green Clearcoat Metallic. ▶

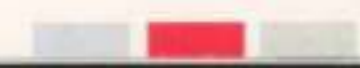
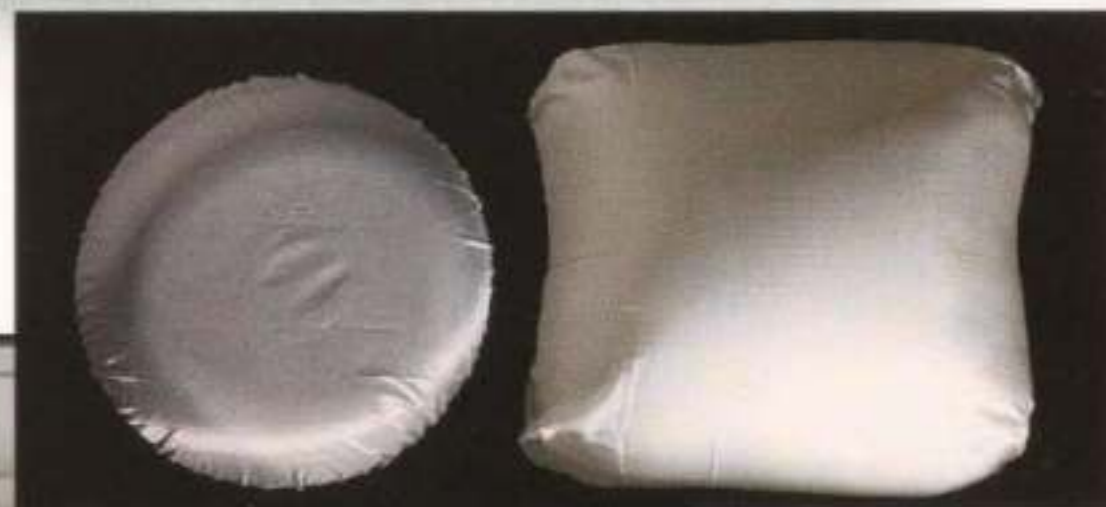
New for '95



◀ Mystique LS interior with optional Opal Grey leather seating surfaces. Mystique LS in Medium Willow Green Clearcoat Metallic. ▼



Dual air bags are standard equipment on Mystique. ▶  
▼ The careful design of Mystique's interior results in having instrumentation and controls that are easy to reach.



# Mystique



## Key Features

### Exterior

- |   |   |   |
|---|---|---|
| GLASS - solar-tinted  | S | S |
| LIGHTS - wrap-around front and rear side marker lights<br>- fog lamps | S | S |
| MIRRORS - dual remote power, heated                                   | S | S |

### Functional

- |   |   |   |
|---|---|---|
| BRAKES - front disc, rear drum<br>- anti-lock braking system                              | S | S |
| ENGINE - 2.0 litre 4-cylinder DOHC 16-valve Zetec I-4,<br>with EEC-IV electronic controls | S | S |
| - 2.5 litre 6-cylinder Duratec 24-valve   | 0 | 0 |
| SUSPENSION -  |   |   |
| Front - MacPherson strut  | S | S |
| Rear - Quadralink independent   | S | S |
| TRANSMISSION  |   |   |
| - 5-speed manual with overdrive   | S | S |
| - 4-speed electronic automatic  | 0 | 0 |

### Interior

- |  |   |   |
|--|---|---|
| AIR BAGS - driver and front passenger  | S | S |
| AIR CONDITIONING - manual  | 0 | 0 |
| CONSOLE - full length and includes armrest, CD/cassette<br>storage, rear ashtray, parking brake and cupholders | S | S |
| LOCKS - child-proof rear latches   | S | S |
| LIGHTS - courtesy door light switches, front footwell<br>illumination and rear dome light                      | S | S |
| MICRONAIR® FILTRATION SYSTEM - interior pollen filter  | S | S |
| SEATS -  |   |   |
| Front - cloth buckets with driver's manual lumbar<br>and tilt adjustment                                       | S | - |
| - upgraded cloth buckets with 10-way driver's<br>seat power adjustment   | 0 | S |
| Rear - 60/40 split bench   | S | S |
| STEERING WHEEL - 4-spoke soft feel   | S | - |
| - leather rim  | - | S |
| RADIO - electronic AM/FM stereo with 4 speakers  | S | - |
| - electronic AM/FM stereo with cassette and 4 speakers   | 0 | S |

S = Standard Equipment    0 = Optional Equipment    - = Not Available

▲ The all-new Mystique has been designed to satisfy both driving enthusiasts and safety-minded families.



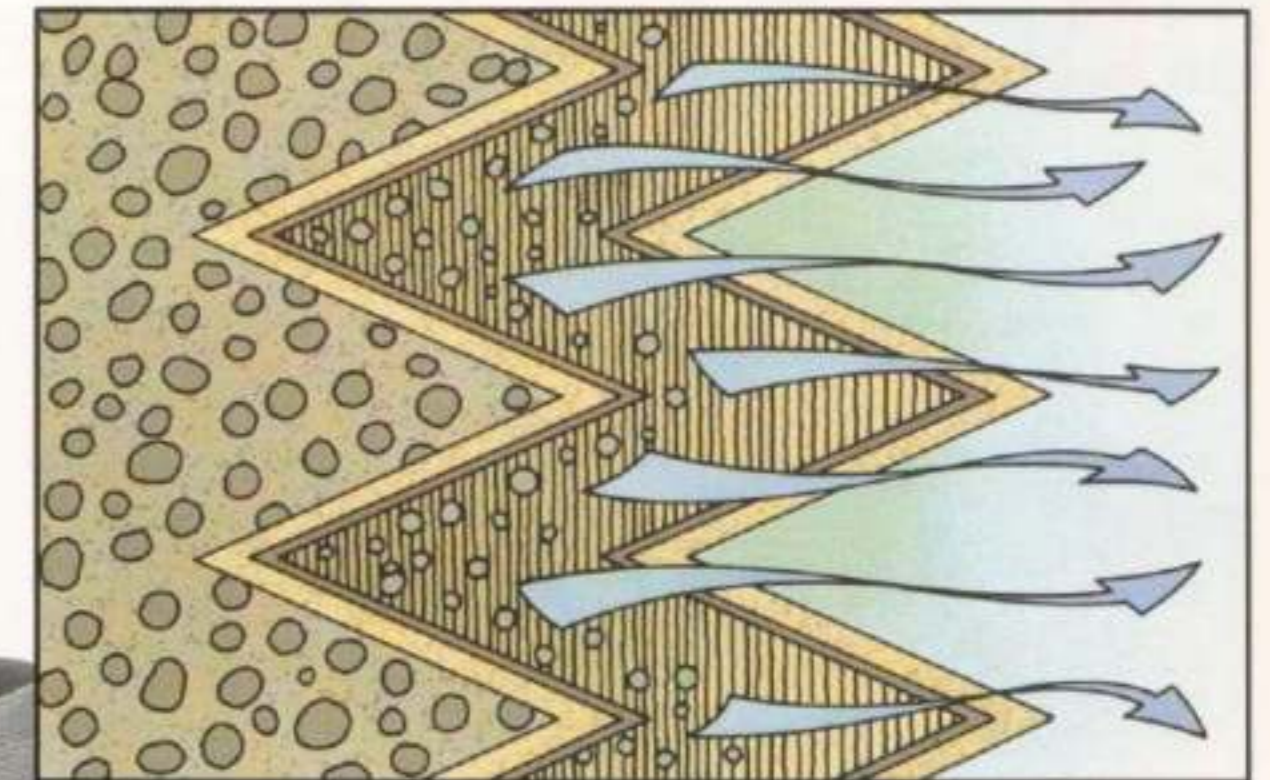
▲ The all-new, available Duratec 2.5L V-6 engine is the direct descendant of Ford racing technology. Remarkably, it requires no scheduled tune-ups for 160,000 km.

## Preferred Equipment Packages

### Mystique LS Preferred Equipment Package # 327A

- Anti-lock braking system
  - 2.5 litre Duratec V6 system engine
  - Speed control
  - Air conditioning
- Power door locks
  - Power windows
  - Light group
  - Remote locking

Mystique's front bucket seats include driver's side lumbar adjustment and seatback stowage pockets. ▼



▲ Mystique's MirconAir® Filtration System filters out most pollen and dust before it can enter the car.

Special solar tinted glass helps protect Mystique's interior against sun fading. ▼



◀ Mystique's interior lighting makes controls easier to see at night and includes illuminated interior door handles.



◀ Illuminated heater/headlamp controls are one of the many pleasant extras you'll find in Mystique.

## Dimensions

	mm	(in.)
Wheelbase	2705	(106.5)
Length	4661	(183.5)
Height	1384	(54.5)
Width	1755	(69.1)
Front Leg Room (max.)	1077	(42.4)
Front Head Room	990	(39.0)
Trunk Volume (litres (cu.ft.))	394	(13.9)
Passenger Capacity	5	
Fuel Capacity (litres (imp. gal))	54	(12.0)



# Grand Marquis

Grand Marquis is a full size, spacious Sedan equipped with a powerful 4.6 litre overhead cam V-8 engine.



## Key Features

### Exterior

- GLASS - solar-tinted
- MIRRORS - dual heated, power remote control
- WHEEL COVERS - deluxe full "basketweave"

### Functional

- BRAKES - 4-wheel power disc
- anti-lock braking system with traction assist
- ENGINE - 4.6 litre EFI overhead cam V-8
- SUSPENSION -
- Front - short and long arm coil spring with stabilizer bar
- Rear - coil spring 4-bar link with stabilizer bar
- TRANSMISSION - electronic automatic overdrive with overdrive lockout feature

### Interior

- AIR BAGS - driver and front passenger
- AIR CONDITIONING - manual
- INSTRUMENT PANEL - woodtone applique, knee bolsters, positive shut-off air conditioning registers and cupholders
- LOCKS - power with power decklid release
- SEATS
- Front - luxury cloth twin-comfort lounge power recliner, 6-way power driver's seat with dual power lumbar support
- Rear - includes fold-down centre armrest and fixed head restraints
- STEERING WHEEL - luxury with twin horn buttons
- RADIO - electronic AM/FM stereo with cassette and 4 speakers

S = Standard Equipment O = Optional Equipment - = Not Available  
+ Grand Marquis is also available in a GS model.



▲ Grand Marquis LS in Champagne Clearcoat Metallic. Grand Marquis LS interior, shown in Light Graphite with optional leather seating surfaces.



## Dimensions

	mm	(in.)
Wheelbase	2905	(114.4)
Length	5394	(212.4)
Height	1442	(56.8)
Width	1976	(77.8)
Front Leg Room (max.)	1079	(42.5)
Front Head Room	1000	(39.4)
Trunk Volume (litres (cu.ft.))	583	(20.6)
Passenger Capacity	6	
Fuel Capacity (litres (imp. gal))	75	(16.6)

## Preferred Equipment Packages

### Grand Marquis LS Preferred Equipment Package # 456A

- Anti-lock braking system with traction assist
- Keyless entry system
- 12-spoke aluminum wheels
- Leather-wrapped steering wheel
- Bodyside paint stripe
- Luxury light group
- Front cornering lamps

# Sable



Sable LS shown in Electric Red Clearcoat Metallic. ▲



▲ Sable's interior in Mocha with optional leather seating surfaces.

◀ Sable LS Wagon in Deep Jewel Green Clearcoat Metallic.

## Key Features

### Exterior

- HEADLAMPS - flush aerodynamic halogen
- MIRRORS - dual power with tinted mirror
- WHEELS - aluminum

### Functional

- BRAKES - 4-wheel anti-lock braking system
- ENGINE - 3.0 litre SEFI V-6
- SUSPENSION -
- Front - MacPherson nitrogen gas pressurized struts with strut-mounted coil springs
- Rear - independent rear with 4 bar parallel arm and MacPherson nitrogen gas pressurized struts
- TRANSMISSION - electronic 4-speed automatic overdrive

### Interior

- AIR BAGS - driver and passenger
- AIR CONDITIONING - manual
- CONSOLE - centre with cup and pencil holder
- LOCKS - child-proof rear latches
- SEATS -
- Front - cloth buckets with power driver's seat and lumbar support
- Rear - fold-down centre armrest
- STEERING WHEEL - leather wrapped
- RADIO - electronic AM/FM stereo with cassette and 4 speakers

S = Standard Equipment O = Optional Equipment - = Not Available

+ Sable is also available in a GS sedan and wagon, LS wagon and LTS sedan.

## Dimensions

	Sedan		Wagon	
	mm	(in.)	mm	(in.)
Wheelbase	2692	(106.0)	2692	(106.0)
Length	4882	(192.2)	4902	(193.0)
Width	1800	(70.9)	1800	(70.9)
Front Leg Room (max.)	1059	(41.7)	1059	(41.7)
Front Head Room	972	(38.3)	980	(38.6)
Trunk Volume (litres (cu.ft.))	509	(18.0)	2316	(81.8)*
Passenger Capacity	5		5	
Fuel Capacity (litres (imp. gal))	60	(13.3)	60	(13.3)

\*With seatback down.

## Preferred Equipment Packages

### Sable LS Preferred Equipment Package # 417A

- High level AM/FM stereo cassette audio system
- Keyless entry system
- Bodyside accent stripe
- Electronic instrument cluster
- Air conditioning with electronic automatic temperature control
- Auto on/off delay system
- 6-way dual power seats
- Power moonroof

# Cougar



▲ Cougar XR7's high performance and safety features are wrapped in a sleek stylish exterior package.

Cougar XR7's standard interior includes reclining seats with luxury cloth and leather trim. ▼

Cougar XR7 in ► Moonlight Blue Clearcoat Metallic.



## Key Features

<b>Exterior</b>	XR7
<b>GRILLE</b> - bright with Cougar "cat's head"	S
<b>MIRRORS</b> - dual power remote control	S
<b>WHEEL COVERS</b> - luxury	S
<b>Functional</b>	
<b>BRAKES</b> - power front disc/rear drum - anti-lock braking system	S
<b>ENGINE</b> - 3.8 litre SEFI V-6 - 4.6 litre overhead cam EFI V-8	S
<b>SUSPENSION</b> -	O
<i>Front</i> - long spindle short and long-arm with variable rate coil springs and stabilizer bar	S
<i>Rear</i> - independent with variable-rate coil springs and stabilizer bar	S
<b>TRANSMISSION</b> - electronic automatic overdrive with brake shift interlock	S
<b>Interior</b>	
<b>AIR BAGS</b> - driver and passenger	S
<b>AIR CONDITIONING</b> - manual with rotary controls	S
<b>CONSOLE</b> - full-length with leather-wrapped floor shift, front (lighted) and rear ashtrays, armrest storage and cupholders	S
<b>HEAT DUCTS</b> - rear compartment	S
<b>SEATS</b> -	
<i>Front</i> - reclining luxury cloth and leather buckets with power lumbar	S
<i>Rear</i> - bench with centre fold-down armrest	S
<b>STEERING WHEEL</b> - luxury 4-spoke with tilt feature	S
<b>RADIO</b> - electronic AM/FM stereo with cassette	S

S = Standard Equipment O = Optional Equipment - = Not Available

## Dimensions

	mm	(in.)
Wheelbase	2870	(113.0)
Length	5077	(199.9)
Height	1333	(52.5)
Width	1846	(72.7)
Front Leg Room (max.)	1079	(42.5)
Front Head Room	968	(38.1)
Trunk Volume (litres (cu.ft.))	427	(15.1)
Passenger Capacity	5	
Fuel Capacity (litres (imp. gal))	68	(15.0)

## Preferred Equipment Packages

### Cougar XR7 Preferred Equipment Package # 385A

- Electronic automatic temperature control
- Premium electronic AM/FM stereo with cassette
- 6-way power driver's seat
- Fingertip speed control
- Leather-wrapped steering wheel
- Cast aluminum wheels with P215/70R15 BSW tires
- Lock group
- Autolamp system

# Mark VIII

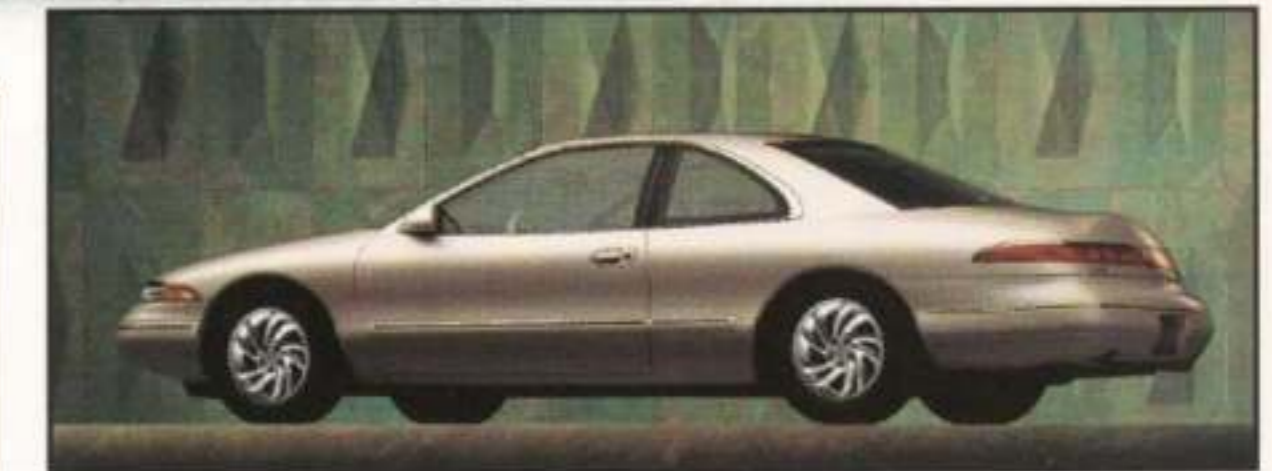


▲ Mark VIII offers luxurious leather seats as standard equipment. Mark VIII's standard computer-managed suspension automatically lowers the vehicle at high speeds for better handling.

## Key Features

<b>Exterior</b>	Mark VIII
<b>GLASS</b> - solar-tinted	S
<b>MIRRORS</b> - heated remote control with 3-position memory	S
<b>WHEELS</b> - 16 inch aluminum alloy with lacy-spoke design	S
<b>Functional</b>	
<b>BRAKES</b> - 4-wheel disc with anti-lock braking system and self-diagnostics and electronic traction assist	S
<b>ENGINE</b> - 4.6 litre V-8 four cam with aluminum block and heads	S
<b>STEERING</b> - power, speed-sensitive, variable assist, rack-and-pinion	S
<b>SUSPENSION</b> - microprocessor controlled air suspension with vehicle level control, speed sensitive high adjustment and independent rear suspension with air spring rebound springs	S
<b>TRANSMISSION</b> - electronically controlled 4-speed automotive overdrive with lock-out switch	S
<b>Interior</b>	
<b>AIR BAGS</b> - driver and front passenger	S
<b>AIR CONDITIONING</b> - electronic automatic temperature control with positive shut-off registers and outside temperature	S
<b>CONSOLE</b> - full-length, accented with walnut burlwood appliques, padded front armrest, illuminated ashtray, cigarette lighter, leather-wrapped gearshift	S
<b>INSTRUMENTATION</b> - mechanical/analog with message centre, programmable trip computer and service interval reminder	S
<b>LOCKS</b> - power	S
<b>SEATS</b> - leather 6-way power driver and passenger seats, dual power recliner and power lumbar control with driver memory and remote recall	S
<b>STEERING WHEEL</b> - leather-wrapped, tilt column	S
<b>RADIO</b> - electronic AM/FM stereo with cassette, premium sound system and 4 speakers	S
<b>WINDOWS</b> - power with one-touch-down for driver	S

S = Standard Equipment O = Optional Equipment - = Not Available



▲ The Mark VIII is a luxury car of exceptional comfort, performance and safety.

## Dimensions

	mm	(in.)
Wheelbase	2870	(113.0)
Length	5265	(207.3)
Height	1361	(53.6)
Width	1894	(74.6)
Front Leg Room (max.)	1082	(42.6)
Front Head Room	968	(38.1)
Trunk Volume (litres (cu.ft.))	408	(14.4)
Passenger Capacity	5	
Fuel Capacity (litres (imp. gal))	68	(15.0)

## The Lincoln Commitment

It is more than the prestige of owning a superior luxury automobile. The Lincoln Commitment™ is a comprehensive owner benefits package designed to provide you with services to support your every driving need. It includes 24-hour Roadside Service Assistance, Emergency Travel Reimbursement, Travel Planning and one of the best warranties in the industry. Plus much more. Ask your Dealer for a complete description of the Lincoln Commitment benefits.



# Continental

The all-new Continental ►  
in Ivory Pearlescent  
Clearcoat.

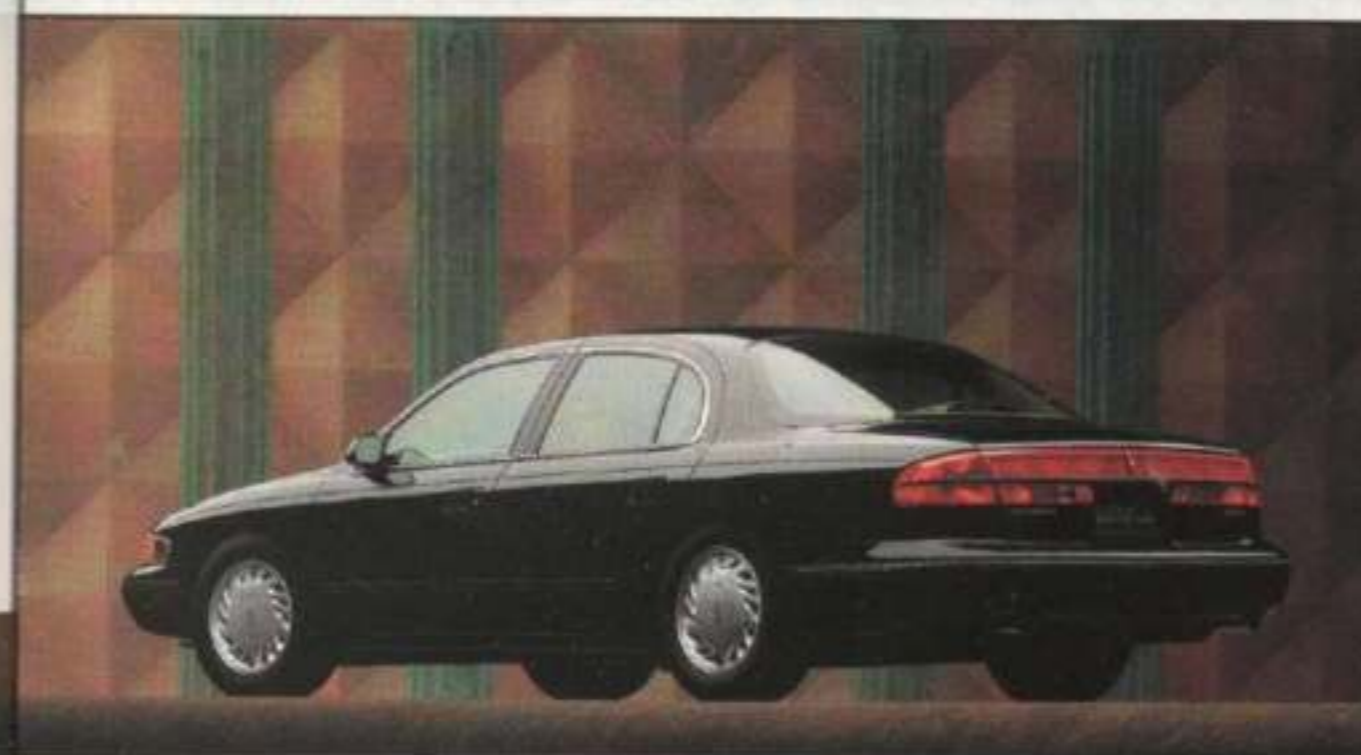


New  
for '95



◀ Six passenger seating offers  
50/50 split bench leather seating.

Driver friendly controls with ►  
3-D virtual image illumination  
system that projects gauges onto  
a specially designed screen.



◀ The ultimate in luxury -  
Continental in Midnight Black  
Clearcoat.

To enjoy exceptional ride and ►  
handling at all times, simply select  
your desired level of steering effort  
and suspension firmness as you drive.  
A Continental exclusive.



# Continental

## The InTech System

Excellent power, ride and handling characteristics are yours thanks to the InTech System, intelligent technology which combines an advanced DOHC 32-valve aluminum V-8 engine, an electronic four-speed automatic transmission and a computer-controlled air suspension system. As a result, you can look forward to a responsive and confident driving experience, even in swiftly-changing driving conditions.



Four-wheel disc Anti-lock Braking System and All-speed Traction Control for increased control and stability.

Memory Profile System remembers settings for 2 drivers.



## Key Features

### Exterior

**GLASS** - complete solar tint  
**MIRRORS** - heated, body-coloured  
**WHEELS** - 16" painted aluminum directional

Continental

S  
S  
S

### Functional

**BRAKES** - 4-wheel power disc anti-lock braking system  
**ENGINE** - 4.6L 32 valve, DOHC V-8  
**STEERING** - power, variable assist speed sensitive  
**SUSPENSION** - automatic levelling system  
*Front* - independent MacPherson struts with gas pressurized shocks  
*Rear* - SLA independent with air springs and gas pressurized shocks  
**TRANSMISSION** - electronic 4-speed automatic

Continental

S  
S  
S  
S  
S  
S  
S

S = Standard Equipment O = Optional Equipment - = Not Available

### Interior

**AIR BAGS** - driver and front passenger  
**AIR CONDITIONING** - electronic climate control with rear seat distribution  
**CONSOLE** - overhead with map/courtesy lamps, cellular phone microphone and sunglass storage  
**LIGHTS** - illuminated door, window and speed control switches, interior theatre dimming feature, map lights, delayed dome light and autolamp with variable time delay displayed in message centre  
**LOCKS** - power, automatic with keyless entry system  
**SEATS** -  
*Front* - 6-way power with 4-way power lumbar adjustment, easy entry/exit driver's seat and leather surfaces  
*Rear* - leather seating surfaces with fold down centre armrest  
**STEERING WHEEL** - leather wrapped, tilt  
**STORAGE** - compartments below air conditioner, large lockable glove box, map pockets on front doors, and rear umbrella storage  
**RADIO** - high level audio system with AM/FM stereo cassette, 4 speakers and dual element anti-theft system in trunk

Continental

S  
S  
S  
S  
S  
S  
S  
S  
S  
S

## Dimensions

	mm	(in.)
Wheelbase	2768	(109.0)
Length	5240	(206.3)
Height	1422	(56.0)
Width	1869	(73.6)
Front Leg Room (max.)	1064	(41.9)
Front Head Room	990	(39.0)
Trunk Volume (litres (cu.ft.))	512	(18.1)
Passenger Capacity (1)	5	
Fuel Capacity (litres (imp. gal))	69	(15.3)

(1) 6-passenger seating optional.

## The Lincoln Commitment

It is more than the prestige of owning a superior luxury automobile. The Lincoln Commitment<sup>SM</sup> is a comprehensive owner benefits package designed to provide you with services to support your every driving need. It includes 24-hour Roadside Service Assistance, Emergency Travel Reimbursement, Travel Planning and one of the best warranties in the industry. Plus much more. Ask your Dealer for a complete description of the Lincoln Commitment benefits.

One of the industry's most advanced door seal systems with 3 seals to exclude outside sound.



Cargo storage system gives you a helping hand when you travel with luggage.

Convenient six-disc CD changer located in the passenger compartment.





# Town Car



◀ The 1995 Town Car has been improved and refined to make it the perfect luxury automobile.

▼ Town Car's luxurious interior has been ergonomically designed so that controls are easily within your reach.



▲ The Town Car Signature Series interior, shown here with the optional Light Graphite leather seating surfaces.

◀ Exterior modifications on the 1995 Town Car include subtle curves and more contemporary colour choices.

## Key Features

### Exterior

**GLASS** - solar-tinted  
**MIRRORS** - dual heated, power remote control  
**WHEELS** - 16" spoke aluminum

Cartier+

S  
S  
S

### Functional

**BRAKES** - 4-wheel disc with anti-lock braking system and traction assist  
**ENGINE** - 4.6 litre 8-cylinder EFI  
**STEERING** - power with 3 position selectable steering effort  
**SUSPENSION** -  
*Front* - long and short-arm coil spring  
*Rear* - 4-bar-link, with air springs on axle  
**TRANSMISSION** - electronic automatic with overdrive

S  
S  
S  
S  
S

### Interior

**AIR BAGS** - driver and passenger  
**AIR CONDITIONING** - automatic temperature and blower controls with sunload sensor  
**INSTRUMENT CLUSTER** - electronic with message centre  
**LOCKS** - power  
**SEATS** -  
*Front* - leather twin comfort lounge with 6-way power, dual power recliners, memory seat power lumbar support, and 5-temperature cushion  
*Rear* - bench with fold-down centre armrest  
**STEERING WHEEL** - leather-wrapped with audio/climate controls  
**RADIO** - JBL audio system with digital sound processing  
**WINDOWS** - power with driver's side express down feature

S  
S  
S  
S  
S  
S  
S

S = Standard Equipment O = Optional Equipment - = Not Available

+ Also available in Executive and Signature Series models.

## Dimensions

	mm	(in.)
Wheelbase	2981	(117.4)
Length	5560	(218.9)
Height	1445	(56.9)
Width	1953	(76.9)
Front Leg Room (max.)	1082	(42.6)
Front Head Room	990	(39.0)
Trunk Volume (litres (cu.ft.))	613	(22.3)
Passenger Capacity	6	
Fuel Capacity (litres (imp. gal))	75	(16.6)

## The Lincoln Commitment

It is more than the prestige of owning a superior luxury automobile. The Lincoln Commitment™ is a comprehensive owner benefits package designed to provide you with services to support your every driving need. It includes 24-hour Roadside Service Assistance, Emergency Travel Reimbursement, Travel Planning and one of the best warranties in the industry. Plus much more. Ask your Dealer for a complete description of the Lincoln Commitment benefits.



# THE Ford MINIVAN Centre

◆ AEROSTAR ◆ WINDSTAR ◆ VILLAGER

## Aerostar

Extended-length Aerostar XLT in Brilliant Blue Clearcoat Metallic. ▶



## Windstar

Windstar GL in Royal Blue Clearcoat Metallic. ▶



## Villager

Villager LS in Electric Red over Silver Clearcoat Metallic. ▶



# Aerostar

Extended length Aerostar XLT in  
◀ Brilliant Blue Clearcoat Metallic.



▲ Aerostar XLT in Deep Emerald Green Clearcoat Metallic.



▲ Aerosport offers you an extra measure of style thanks to its special sport appearance touches.

### Preferred Equipment Packages

#### Aerostar Extended Length XLT Preferred Equipment Package # 641A

- Electronic AM/FM stereo with cassette, clock, rear radio controls, headphone jacks and 6 speakers
- Power convenience group
- Luggage rack
- Privacy™ glass

### Dimensions

	Regular		Extended	
	mm	(in.)	mm	(in.)
Wheelbase	3020	(118.9)	3020	(118.9)
Length	4442	(174.9)	4833	(190.3)
Height	1851	(72.9)	1879	(74.0)
Width	1821	(71.7)	1828	(72.0)
Front Leg Room (max.)	1052	(41.4)	1052	(41.4)
Front Head Room	1003	(39.5)	1003	(39.5)
Cargo Volume (litres (cu.ft.)) <sup>(1)</sup>	3944	(139.3)	4748	(167.7)
Passenger Capacity	7		7	
Fuel Capacity (litres (imp. gal))	79	(17.5)	79	(17.5)

(1) With rear seat removed.

### Key Features

	Extended 2WD XLT+
<b>Exterior</b>	
GLASS - tinted	S
MIRRORS - dual black fold-away paddle	S
SPOILER - front black aero	S
<b>Functional</b>	
BRAKES - power with rear wheel anti-lock braking system	S
ENGINE - 4.0 litre V-6 EFI (- 3.0L V-6 EFI with regular length)	S
<b>SUSPENSION</b>	
Front - coil springs with front stabilizer bar and gas pressurized shocks	S
Rear - coil springs with gas pressurized shocks	S
TRANSMISSION - automatic overdrive	S
<b>Interior</b>	
AIR BAGS - driver's side	S
AIR CONDITIONING - front	S
CONVENIENCE GROUP - includes courtesy lamp switches on all doors and cargo lamp	S
INSTRUMENT PANEL - colour-keyed with black plastic appliques, stowage bin and lockable glove box	S
<b>SEATS</b>	
Front - reclining dual captain's chairs with power lumbar support	S
2nd Row - 2-passenger cloth bench seat	S
3rd Row - 3-passenger cloth bench seat	S
STEERING WHEEL - colour-keyed soft vinyl	S
RADIO - electronic AM/FM with digital clock	S

S = Standard Equipment O = Optional Equipment - = Not Available

+ Aerostar is also available in Regular Length. The Extended-Length Aerostar is also available in an electronic 4-wheel drive (E4WD) model.



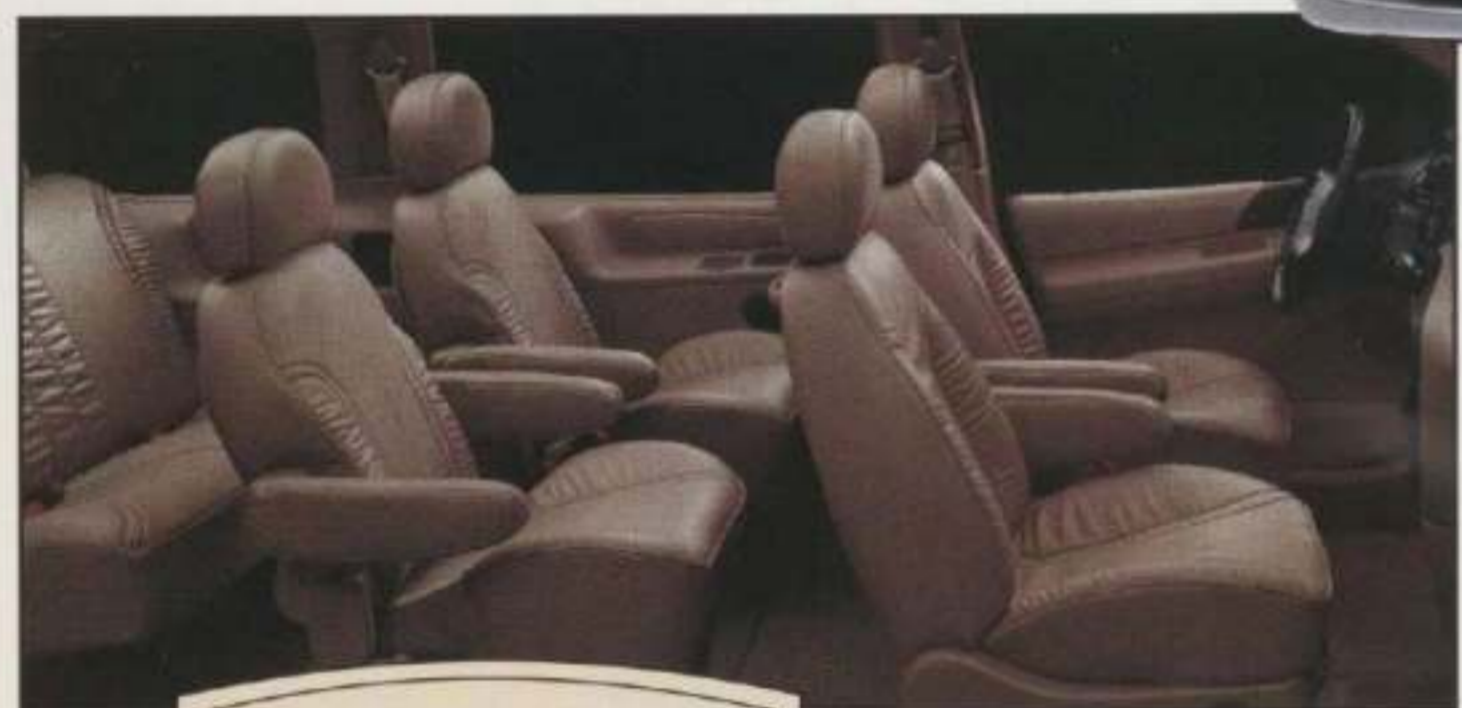
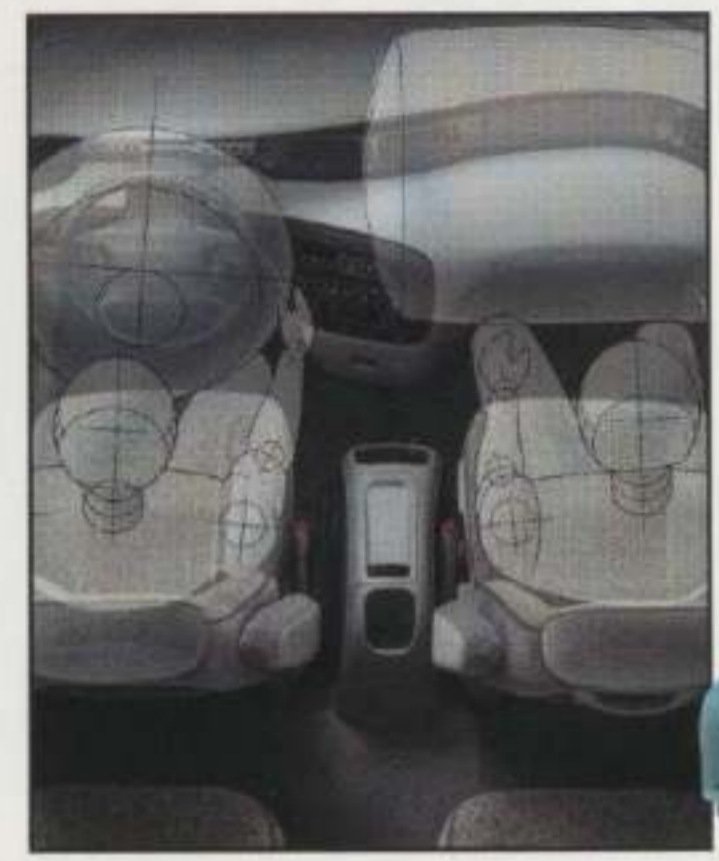




# Windstar

Windstar is remarkably quiet due to its unique design and extensive testing done in Ford's "quiet room".

Windstar's many standard safety features include dual air bags.



Windstar LX's interior is luxuriously appointed (shown here in Opal Grey with optional leather seating surfaces).

The versatile rear seat/bed is optional. (Late availability)



## Key Features

Exterior	LX +	Interior	LX +
<b>GLASS</b> - solar-tinted	S	<b>AIR BAGS</b> - driver and front passenger	S
<b>MIRRORS</b> - dual electric remote black fold-away	S	<b>AIR CONDITIONING</b> - manual front	S
<b>WHEELS</b> - bright cast aluminum	S	<b>CUPHOLDERS</b> - 2 in centre stack of instrument panel, 1 in 2nd row left quarter trim panel and 2 in 3rd row right quarter trim panel (2nd and 3rd row designed to accommodate juice boxes)	S
<b>Functional</b>		<b>LOCKS</b> - power with illuminated switches and child-proof latch in side sliding door	S
<b>BRAKES</b> - front disc/rear drum with 4-wheel anti-lock braking system	S	<b>SEATS</b> -	S
<b>ENGINE</b> - 3.8 litre sequential fuel injection V-6	S	<i>Front</i> - dual reclining low-back cloth buckets with 6-way power driver's seat, passenger and driver power lumbar support	S
<b>SUSPENSION</b> -	S	<i>2nd Row</i> - 2-passenger cloth bench	S
<i>Front</i> - MacPherson struts with stabilizer bar	S	<i>3rd Row</i> - 3-passenger cloth bench with forward folding seat back and quick release feature for removal - adjustable seat track	S
<i>Rear</i> - Twist-Beam axle with variable-rate coil springs and gas-pressurized shock absorbers	S	<b>STEERING WHEEL</b> - leather-wrapped	S
<b>TRANSMISSION</b> - 4-speed electronic automatic with overdrive lockout	S	<b>RADIO</b> - Premium AM/FM stereo with cassette and digital clock, 4 speakers, rear seat controls and mini headphone jacks	S

S = Standard Equipment    O = Optional Equipment    -- = Not Available  
+ Windstar is also available in a GL model.



Windstar's rear liftgate opens wide for easy access into its generous cargo area.



## Preferred Equipment Packages

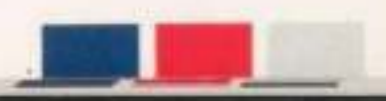
### Windstar LX Preferred Equipment Package # 362C

- Remote keyless entry system
- Privacy™ glass
- Luggage rack
- Two-tone paint
- Front and rear floor mats
- Cloth quad bucket seats

## Dimensions

	mm	(in.)
Wheelbase	3065	(120.7)
Length	5110	(201.2)
Height	1724	(67.9)
Width	1915	(75.4)
Front Leg Room (max.)	1062	(41.8)
Front Head Room	998	(39.3)
Cargo Volume (litres (cu.ft.))	4078	(144.0)*
Passenger Capacity (maximum)	7	
Fuel Capacity (litres (imp. gal))	94	(20.8)**

\* With rear seats removed.  
\*\* 75 litres (16.6 imp. gal.) on GL model.





# Villager

▼ Villager Nautica includes all the features of the LS model plus many extras including special colour scheme and wheels.



▲ Villager LS interior (shown in optional Smoke leather seating surfaces) has versatile seating and cargo carrying capabilities.

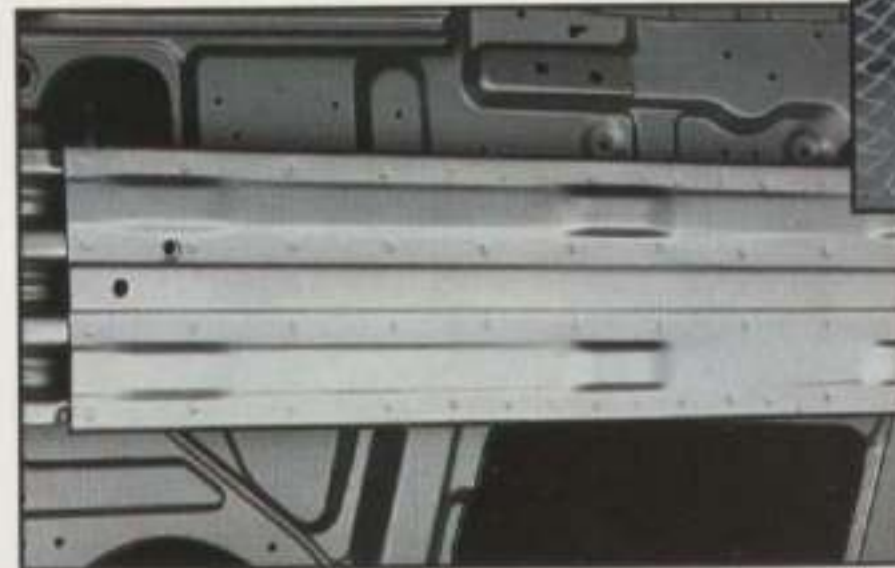


◀ Villager's instrumentation and controls are positioned where you'll find them most useful.



▲ A handy cargo net is standard on Villager LS and Nautica.

Side intrusion door beams are among the many occupant safety features you'll find standard on Villager.



## Dimensions

	mm	(in.)
Wheelbase	2849	(112.2)
Length	4823	(189.9)
Height	1717	(67.6)
Width	1871	(73.7)
Front Leg Room (max.)	1013	(39.9)
Front Head Room	1000	(39.4)
Cargo Volume (litres (cu.ft.))	3579	(126.4)
Passenger Capacity	7	
Fuel Capacity (litres (imp. gal))	75	(16.6)

## Preferred Equipment Packages

### Villager Nautica Preferred Equipment Package # 985A

- Premium sound AM/FM stereo with cassette
- Rear auxiliary heating and air conditioning system
- Flip open rear liftgate window
- 8-way power driver's seat
- 4-way power passenger's seat
- Aluminum wheels with locking lug nuts
- Electronic instrument cluster
- Keyless entry and autolamp on/off delay system

## Key Features

Exterior	Nautica +
<b>GLASS</b> - privacy	S
<b>MIRRORS</b> - dual power black sail-mounted breakway	S
<b>PAINT</b> - two tone clearcoat metallic	S
<b>Functional</b>	
<b>BRAKES</b> - power front disc/rear drum with 4-wheel anti-lock braking system	S
<b>ENGINE</b> - 3.0 litre V-6 overhead cam with multi-port electronic fuel injection and electronic engine controls	S
<b>SUSPENSION</b> -	
<i>Front</i> - MacPherson nitrogen gas-pressurized struts with front stabilizer bar	S
<i>Rear</i> - hotchkiss leaf suspension with nitrogen gas-pressurized shocks	S
<b>TRANSMISSION</b> - electronic 4-speed automatic overdrive	S
<b>Interior</b>	
<b>AIR BAGS</b> - driver's side	S
<b>AIR CONDITIONING</b> - front manual	S
<b>INSTRUMENT PANEL</b> - includes: backlit mechanical instrument cluster with tachometer and trip odometer, locking glove box, two storage bins with removable rubber mats, slide-out coin holder tray and interior hood release	S
<b>LOCKS</b> - child-proof side sliding door latch	S
- power with side sliding door "memory"	S
<b>SEATS</b> -	
<i>Front</i> - leather captain's chairs	S
<i>2nd Row</i> - leather captain's chairs	S
<i>3rd Row</i> - leather 3-passenger bench on movable in-floor tracks	S
<b>STEERING WHEEL</b> - leather-wrapped	S
<b>RADIO</b> - electronic AM/FM stereo with cassette and 4 speakers	S

S = Standard Equipment    O = Optional Equipment    - = Not Available

+ Villager is also available in GS and LS models.



# Explorer

New for '95



◀ New, more ergonomically designed front dash with optional state of the art message centre.

▼ The new Explorer offers even more room for passenger comfort as well as comfort features such as rear heater/AC and radio controls, dual cupholders and voice-activated cellular phone.



▲ The new 1995 Explorer offers a fresh and dynamic new front and rear end styling.

▼ Explorer offers a model to please everyone: XL, XLT, Eddie Bauer, Limited, Sport and the exciting new Expedition.



## Dimensions

	2-Door 4x4+		4-Door 4x4+	
	mm	(in.)	mm	(in.)
Wheelbase	2583	(101.7)	2832	(111.5)
Length	4536	(178.6)	4788	(188.5)
Height	1699	(66.9)	1697	(66.8)
Width	1732	(68.2)	1783	(70.2)
Front Leg Room (max.)	1076	(42.4)	1076	(42.4)
Front Head Room	1011	(39.8)	1011	(39.8)
Cargo Volume (litres (cu. ft.))	1965	(69.4)*	2310	(81.6)*
Passenger Capacity	4		5	
Fuel Capacity (litres (imp. gal))	65	(14.5)	79	(17.5)

+ Also available in 4x2 models.

\* With rear seat down.

## Key Features

	Expedition (2-Door)	Eddie Bauer++ (4-Door)
<b>Exterior</b>		
GLASS - privacy	S	S
MIRRORS - electric remote sail mounted	S	S
WHEELS - 16" chrome steel	S	S
<b>Functional</b>		
BRAKES - power 4-wheel anti-lock braking system	S	S
ENGINE - 4.0L EFI V-6	S	S
<b>SUSPENSION - (4x2)</b>		
Front - independent SLA, torsion bar, gas-pressurized shocks and stabilizer bar	S	S
Rear - semi floating type rear axle, 2-stage variable rate leaf springs, gas-pressurized shocks and stabilizer bar	S	S
TRANSMISSION - 4-speed automatic	S	S
<b>Interior</b>		
AIR BAGS - driver's and passenger	S	S
AIR CONDITIONING - manual	S	S
INSTRUMENTATION - includes 4 gauge cluster with warning lights, trip odometer and tachometer	S	S
LIGHT GROUP - includes ashtray, glove box and engine compartment lights	S	S
<b>SEATS -</b>		
Front - 6-way power cloth sport buckets	S	S
Rear - split/folding with headrest	S	S
STEERING WHEEL - tilt, black leather-wrapped	S	S
RADIO - large bezel premium electronic AM/FM cassette with digital clock and 4 speakers	S	S

S = Standard Equipment O = Optional Equipment - = Not Available

++ Explorer is also available in XL and Sport 2-Door models, and XL, XLT and Limited 4-Door models.

## Preferred Equipment Packages

### Eddie Bauer Preferred Equipment Package # 696A

- Luxury group (includes high series floor console, front overhead console and electronics group).
- Sport bucket seats with leather seating surfaces and 6-way power lumbar support.
- Premium group (includes electronic automatic temperature control, message centre and JBL audio system).



# Ranger



◀ Ranger's new instrument panel makes driving easier and more fun.



◀ Ranger XLT regular cab can haul up to 748.4 kg (1,650 lb.).



▲ Ranger XLT interior with 60/40 split bench seat.



◀ Ranger Splash regular cab for those who like to be noticed. The Splash also offers a unique handling suspension and 15" tires for quick and agile handling.

	Dimensions	
	Regular Cab mm (in.)	Super Cab mm (in.)
Wheelbase	2740 (107.9)*	3180 (125.2)
Box Length (at floor)	1823 (71.8)*	1823 (71.8)
Load Height (at cargo floor)	709 (27.9)**	686 (27.0)**
Interior Width	1341 (52.8)	1341 (52.8)
Front Leg Room (max.)	1076 (42.4)	1076 (42.4)
Front Head Room	993 (39.1)	998 (39.3)
Cargo Volume (litres (cu. ft.))	1059 (37.4)	1059 (37.4)
Passenger Capacity	3	5
Fuel Capacity (litres (imp. gal))	64 (14.1)*	77 (17.0)

\* Short wheelbase only. See your dealer for long wheelbase dimensions.  
\*\* On 4x2 models only. See your dealer for 4x4 load height dimensions.

	Key Features	
	XLT Regular Cab	Splash+ Regular Cab
<b>Exterior</b>		
GLASS - tinted	S	S
MIRRORS - manual sail mount	S	-
- electric sail mount	O	S
WHEELS - full face steel	S	-
- chrome +++	O	S
<b>Functional</b>		
BRAKES - power with rear anti-lock braking system*	S	S
ENGINE - 2.3L sequential fuel injection	S	S
SUSPENSION - (4x2)		
Front - gas pressurized shocks with stabilizer bar	S	S
Rear - gas pressurized shocks (includes stabilizer bar on Splash)	S	S
TRANSMISSION - 5-speed manual overdrive	S	S
- 4-speed automatic	O	O
<b>Interior</b>		
AIR BAGS - driver's side	S	S
AIR CONDITIONING - front	O	O
FLOOR CONSOLETTA - includes dual cupholders	S	S
LIGHT GROUP - includes cargo box, engine compartment and map lights	S	S
POWER POINT - 12 volt	S	S
SEATS - 60/40 split cloth bench	S	S
RADIO - electronic AM/FM stereo with digital clock	S	S

S = Standard Equipment O = Optional Equipment - = Not Available

\* Standard 4-wheel anti-lock braking system on 4x4 models and 4x2 with 4.0L engine.

++ Ranger is also available in XL, XL Sport, STX; Regular Cab and SuperCab; 4x2 and 4x4 models.

+++ 4x2 only.

▲ The 1995 Ranger offers even more refinements from the all-new 1994 model, including a complete interior freshening.



Preferred Equipment Packages	
<b>Ranger XLT Preferred Equipment Package # 465A</b> <ul style="list-style-type: none"> <li>• Air conditioning</li> <li>• Speed control with tilt steering wheel</li> <li>• Handling package</li> <li>• Electronic AM/FM stereo with cassette and clock</li> <li>• P215/70R14SL Steel BSW all-season tires on deep dish cast aluminum wheels</li> <li>• Power mirrors</li> <li>• XLT group</li> </ul>	<b>Ranger Splash Preferred Equipment Package # 475A</b> <ul style="list-style-type: none"> <li>• Air conditioning</li> <li>• Speed control with tilt steering wheel</li> <li>• Electronic AM/FM stereo with cassette and clock</li> </ul>



# F-Series 4x2



### 4x2 Engine Availability Regular Cab+

Engine	F-150		F-250		F-350	
	F-150	F-250	HD	DRW	HD	DRW
4.9L EFI I-6	S	S	S	-	-	-
5.0L EFI V-8	O	O	-	-	-	-
5.8L EFI V-8	O	O	O	S	-	-
7.5L EFI V-8	-	-	O	O	-	-
7.3L Power Stroke++ Turbo Diesel	-	-	O	O	-	-

HD = Heavy Duty. DRW = Dual Rear Wheels.

+ F-Series 4x2 pickups are also available in SuperCab F-150, F-250 HD and F350, and, Crew Cab F-350 models.

++ The trade-mark POWER STROKE is used under license from C.M.R. Canada Ltd.



▲ F-Series Regular Cab is engineered for ruggedness, comfort, safety and performance.



▲ F-350 Crew Cab in Oxford White.

### F-150 Key Features

#### Exterior

- GLASS - tinted S
- MIRRORS - bright manual S
- WHEEL TRIM - bright hub caps on argent steel wheels S

#### Functional

- BRAKES - power front disc/rear drum with rear wheel anti-lock braking system S
- STEERING - power S
- SUSPENSION - S
  - Front - Twin-I-Beam independent with coil springs S
  - Rear - 2-stage leaf springs, variable rate with heavy duty gas pressurized shocks S
- TRANSMISSION - 5-speed manual overdrive S

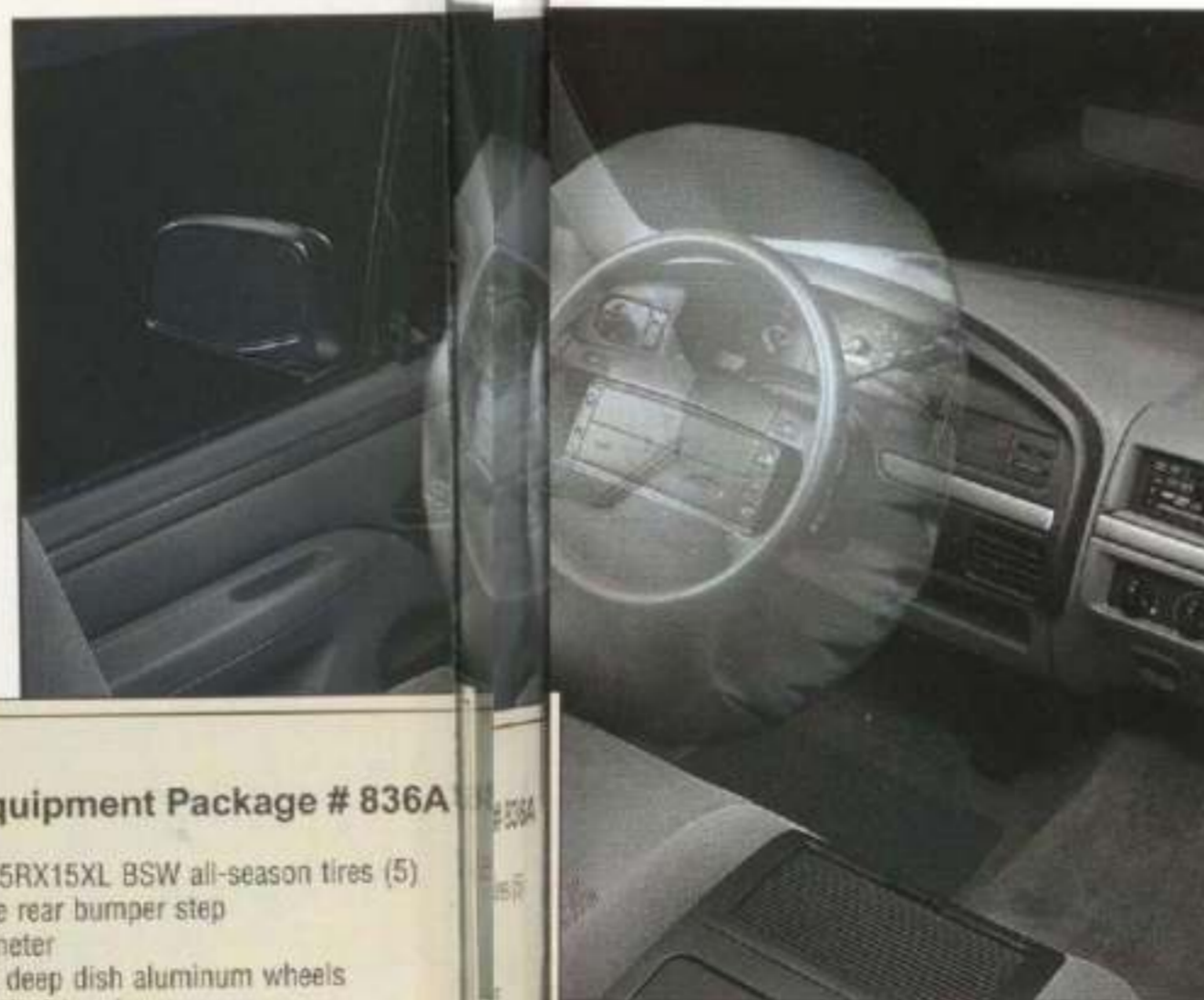
#### Interior

- AIR BAGS - driver's side S
- AIR CONDITIONING - manual O
- INSTRUMENTATION - includes voltmeter, oil pressure and temperature gauge, and trip odometer S
- POWER POINT - electrical accessory outlet S
- SEATS - S
  - Front - cloth flight bench with power lumbar support S
- STEERING WHEEL - leather-wrapped, tilt with speed control S
- RADIO - electronic AM/FM stereo with digital clock and 4 speakers S

S = Standard Equipment O = Optional Equipment - = Not Available

+ F-Series pickups are also available in Eddie Bauer, Special and XL series, Styleside and XL and XLT Flareside body types.

▲ F-250HD XLT Styleside SuperCab in Black Clearcoat. Driver's side air bag is standard on F-Series models under 3856 kg (8,500 lbs.) Gross Vehicle Weight Rating.



### Preferred Equipment Packages

#### F-150 Regular Cab Styleside XLT Preferred Equipment Package # 836A

- Air conditioning
- Electronic AM/FM stereo with clock and cassette
- Power door locks
- Power windows
- Interior enhancement/light group
- Optional payload package #2
- P235/75RX15XL BSW all-season tires (5)
- Chrome rear bumper step
- Tachometer
- Forged deep dish aluminum wheels
- Bright electric mirrors



▲ XLT Flareside Regular Cab in Brilliant Blue Clearcoat Metallic.





# F-Series 4x4

► F-Series XLT Styleside Regular Cab in lower accent two-tone Oxford White over Bright Red.



▲ F-Series XLT 4x4 Regular Cab in Raven Black.

Available for F-150 4x4s, ► Touch Drive offers the ultimate in 4-wheel driving convenience.



## Engine Availability Regular Cab+

Engine	F-150	F-250 HD	F-350 SRW
4.9L EFI I-6	S	-	S
5.0L EFI V-8	O	-	-
5.8L EFI V-8	O	S	O
7.5L EFI V-8	-	O	O
7.3L Power Stroke++	-	-	-
Turbo Diesel	-	O	O

HD = Heavy Duty. SRW = Single Rear Wheels.

+ F-Series 4x4 pickups are also available in SuperCab F-150, SuperCab F-250 heavy duty, and Crew Cab F-350 models.

++ The trade-mark POWER STROKE is used under license from C.M.R. Canada Ltd.

## Preferred Equipment Packages

### F-150 Regular Cab Styleside Eddie Bauer Preferred Equipment Package # 960A

- Air conditioning
- Electronic AM/FM stereo with clock and cassette
- Power door locks
- Power windows
- Interior enhancement/light group
- Optional payload package #2
- P235/75RX15XL BSW all-season tires (5)
- Chrome rear bumper step

- Tachometer
- Forged deep dish aluminum wheels
- Bright electric mirrors
- Lower accent 2-tone paint
- Colour-keyed cab steps
- Premium cloth 40/20/40 bench seat with power lumbar

## F-150 Key Features

### Exterior

- GLASS - tinted S
- MIRRORS - bright manual S
- WHEEL TRIM - bright hub caps on argnet steel wheels S

### Functional

- BRAKES - power front disc/rear drum with rear wheel anti-lock braking system S
- STEERING - power S
- SUSPENSION - S
  - Front - Twin-Traction beam with coil springs
  - Rear - 2-stage leaf springs, variable rate with heavy duty gas pressurized shocks
- TRANSMISSION - 5-speed manual overdrive S

### Interior

- AIR BAGS - driver's side S
- AIR CONDITIONING - manual O
- INSTRUMENTATION - voltmeter, oil pressure and temperature gauges, trip odometer S
- POWER POINT - electrical accessory outlet S
- SEATS - S
  - Front - cloth flight bench with power lumbar support
- STEERING WHEEL - leather-wrapped with tilt column and speed control S
- RADIO - electronic AM/FM stereo with digital clock and 4 speakers S

S = Standard Equipment O = Optional Equipment - = Not Available

+ F-Series 4x4s are also available in Special, XL and XLT series, Flareside and Styleside body types.



# Bronco



▲ Bronco has many standard safety features including a driver's side air bag.

▲ Bronco is a powerful full-size sport utility vehicle with many standard comfort and convenience features.

## Key Features

### Exterior

- GLASS - privacy S
- MIRRORS - bright manual S
- WHEEL TRIM - forged aluminum deep dish wheels S

### Functional

- BRAKES - 4-wheel power anti-lock braking system S
- STEERING - power S
- SUSPENSION - S
  - Front - twin-traction beam independent suspension with stabilizer bar
  - Rear - heavy duty gas-pressurized shock absorbers
- TRANSMISSION - 5-speed manual overdrive S
  - 4-speed automatic overdrive O

### Interior

- AIR BAGS - driver's side S
- AIR CONDITIONING - manual S
- CONSOLE - overhead with compass, outside temperature display, map lights, garage door opener storage and storage pocket S
- POWER POINT - electrical accessory outlet S
- SEATS - S
  - Front - cloth captain's chairs with power lumbar
  - Rear - 3-passenger flip/fold bench
- STEERING WHEEL - black leather-wrapped with tilt column and speed control S
- RADIO - electronic AM/FM stereo with digital clock S

S = Standard Equipment O = Optional Equipment - = Not Available

+ Bronco is also available in XL and XLT models.

► Bronco XLT (shown in Raven Black) has the power and rugged construction to provide great towing capabilities.



## Engine Specifications

	Eddie Bauer +	Eddie Bauer +
5.0 litre Multi-Port EFI V-8	S	5.8 litre Multi-Port EFI V-8 O
Bore and Stroke	4.00 x 3.00	Bore and Stroke 4.00 x 3.50
Compression ratio	9.0	Compression ratio 8.8
Horsepower	205 @ 4,000 rpm*	Horsepower 210 @ 3,600 rpm
Torque, lbs./ft.	275 @ 3,000 rpm	Torque, lbs./ft. 325 @ 2,800 rpm

\* With manual transmission - 195 horsepower and 270 lb/ft of torque with automatic transmission.

## Preferred Equipment Packages

### Bronco Eddie Bauer Preferred Equipment Package # 570A

- Luxury group (includes bright electric mirrors, power door locks, power windows and electronic AM/FM stereo with cassette and clock)
- Wheel group (includes spare tire carrier)
- Cargo cover/netting

# Club Wagon

► This XLT Club Wagon is shown in the optional deluxe two-tone treatment of Electric Red Clearcoat Metallic and Silver Clearcoat Metallic.



▲ The Chateau offers 7-passenger seating, shown here in Crystal Blue.



▲ Club Wagon Chateau with its unique two-tone treatment in Portofino Blue Clearcoat Metallic and Raven Black.

## Power Ratings and Maximum Trailer Weights

Engine	Axle Ratio	GCWR Max.	Regular* Wagon
4.9L EFI I-6	3.08	4082 (9,000)	1633 (3,600)
	3.55	4536 (10,000)	2087 (4,600)
5.0L EFI V-8	3.31	5216 (11,500)	2812 (6,200)
5.8L EFI V-8	3.55	5443 (12,000)	2994 (6,600)
7.3L DI Turbo Diesel	3.55	7258 (16,000)	4263 (9,400)
7.5L EFI V-8	4.09	9072 (20,000)	4536 (10,000)
	3.55	6804 (15,000)	3855 (8,500)
	4.09	8392 (18,500)	4536 (10,000)

NOTE: All maximum trailer weights shown must be reduced by passenger and cargo weight in the towing vehicle. Combined weight of the towing vehicle (including hitch, passengers and cargo) and the loaded trailer must not exceed the Gross Combination Weight Rating (GCWR).

\* Club Wagon is also available in Regular, Heavy Duty Regular and Super Duty models.

## Preferred Equipment Packages

### Regular Club Wagon Chateau Preferred Equipment Package # 730A

- High capacity front and rear air conditioning
- Remote keyless entry/anti-theft system
- Power driver's seat

## Key Features

Exterior	Chateau+
GLASS - privacy	S
MIRRORS - power, sail-mounted	S
WHEEL TRIM - bright cast aluminum wheels**	S
Functional	
BRAKES - power 4-wheel anti-lock braking system	S
STEERING - power	S
SUSPENSION - Front - twin I-beam independent with axle/coil spring assembly	S
Rear - nitrogen gas-pressurized shock absorbers	S
TRANSMISSION - electronic 4-speed automatic	S
Interior	
AIR BAGS - driver's side	S
AIR CONDITIONING - manual	S
ENGINE COVER - colour-keyed console	S
LOCKS/WINDOWS - power	S
SEATS - Front - colour-keyed cloth dual captain's chairs	S
2nd row - dual captain's chairs	S
3rd row - 3-passenger seat/bed	S
STEERING WHEEL - leather-wrapped	S
RADIO - premium electronic AM/FM stereo with clock, cassette, 6 speakers and rear remote	S

S = Standard Equipment O = Optional Equipment - = Not Available

+ Club Wagon is also available in XL and XLT trim levels. Chateau series is ONLY available on Regular and Heavy Duty Regular models.

\*\* Sport wheel covers on Heavy Duty Regular Wagon.

# Econoline



▲ Econoline's instrument panel has been ergonomically designed so controls are easy to operate. Econoline is a full-size cargo van with an impressive list of safety, performance and convenience features.



▼ Econoline Super Van in Portofino Blue Clearcoat Metallic.



## Key Features

Exterior	XL +
GLASS - tinted	S
MIRRORS - black, sail-mounted with tubular neck	S
WHEEL TRIM - wheel covers * - sport wheel covers **	S S
Functional	
BRAKES - power with rear wheel anti-lock braking system - 4-wheel anti-lock braking system	S O
STEERING - power	S
SUSPENSION - Front - twin I-beam independent suspension Rear - leaf springs++ and finely tuned gas pressurized shock absorbers	S S
TRANSMISSION - electronic 4-speed automatic	S
Interior	
AIR BAGS - driver's side	S
AIR CONDITIONING - manual	O
ENGINE COVER - colour-keyed with map pocket	S
LOCKS - power	S
SEATS - Front - dual cloth captain's chairs (without trim on RV)	S
STEERING WHEEL - black vinyl	S
RADIO - electronic AM/FM stereo with digital clock and 4 speakers	S
POWER WINDOWS -	S

S = Standard Equipment O = Optional Equipment - = Not Available

+ Econoline is also available in Standard and RV models.

++ Weight capacity varies depending on the model. See your Dealer for details.

\* E-150 models only.

\*\* E-250 and E-350 models only.

## Powertrain Availability

	E-150	E-350 +
Standard	4.9L EFI I-6/3 spd. auto.	4.9L EFI I-6/3 spd. auto.
Optional	4.9L EFI I-6/4 spd. auto.	5.8L EFI V-8/4 spd. auto. E40D
	5.0L EFI V-8/4 spd. auto. 4R70W	7.5L EFI V-8/4 spd. auto. E40D
	5.8L EFI V-8/4 spd. auto. E40D	7.3L Turbo Diesel/4 spd. auto. E40D

4R70W = Electronic Automatic Overdrive. E40D = Electronic Automatic Overdrive.

+ Econoline is also available in E-250 and E-250 heavy duty models.

# 10 Great Canadian Drives

*Driving offers you and your family the most satisfying way to experience Canada's awesome beauty. No matter where you live or where you plan to vacation, thousands of kilometres of picturesque highways and byways await you.*

To make the most of your next driving vacation, we've outlined 10 great Canadian drives - 10 different ways you can encounter the scenic splendour and rich history of our country.

Within these borders you can see it all: majestic mountains and massive glaciers, golden plains of wheat, lush green valleys, winding coastal highways, picturesque fishing villages and more. Given this amazing variety, one of our ten tours is certain to be the perfect scenic drive for you.

The shortest trips we've described here are Newfoundland's Marine Drive (70 km./43 mi.) and Prince Edward Island's world-famous Blue Heron Drive (185 km./116 mi.). Either one can easily be completed in a day.

The longest drive is Quebec's Navigators' Route at 1,530 km. (950 mi.). Set aside several days - perhaps a week or more - if you choose to follow it north from Quebec City to the Gaspé Peninsula and back.

Many of the drives fall in the 800 km./500 mi. range. They too will require a few days to complete, depending on your travelling pace, your inclination to take side trips, and on the number and length of your stopovers along the way.

Our 10 Great Canadian Drives can be used as the basis of a complete vacation in itself, or to enhance a driving vacation you've already begun to plan. All are worth experiencing, so you may wish to save this catalogue and refer to it again in the years to come. Have a great driving vacation!



- 1** British Columbia  
The Coast Mountain Circle 700 km. (440 mi.)
- 2** Alberta  
The Jasper-Icefield Circle Tour 874 km. (546 mi.)
- 3** Saskatchewan  
The Cowboy Country Tour 932 km. (578 mi.)
- 4** Manitoba  
The Southeastern Tour 477 km. (297 mi.)

- 5** Ontario  
Voyageurs' Circle Tour 663 km. (413 mi.)
- 6** Quebec  
The Navigators' Route 1,530 km. (950 mi.)
- 7** New Brunswick  
The South Central Tour 828 km. (515 mi.)

- 8** Nova Scotia  
The Cabot Trail 296 km. (184 mi.)
- 9** Prince Edward Island  
The Blue Heron Drive 185 km. (116 mi.)
- 10** Newfoundland  
The Marine Drive 70 km. (43 mi.)



# 10 Great Canadian Drives **British Columbia**

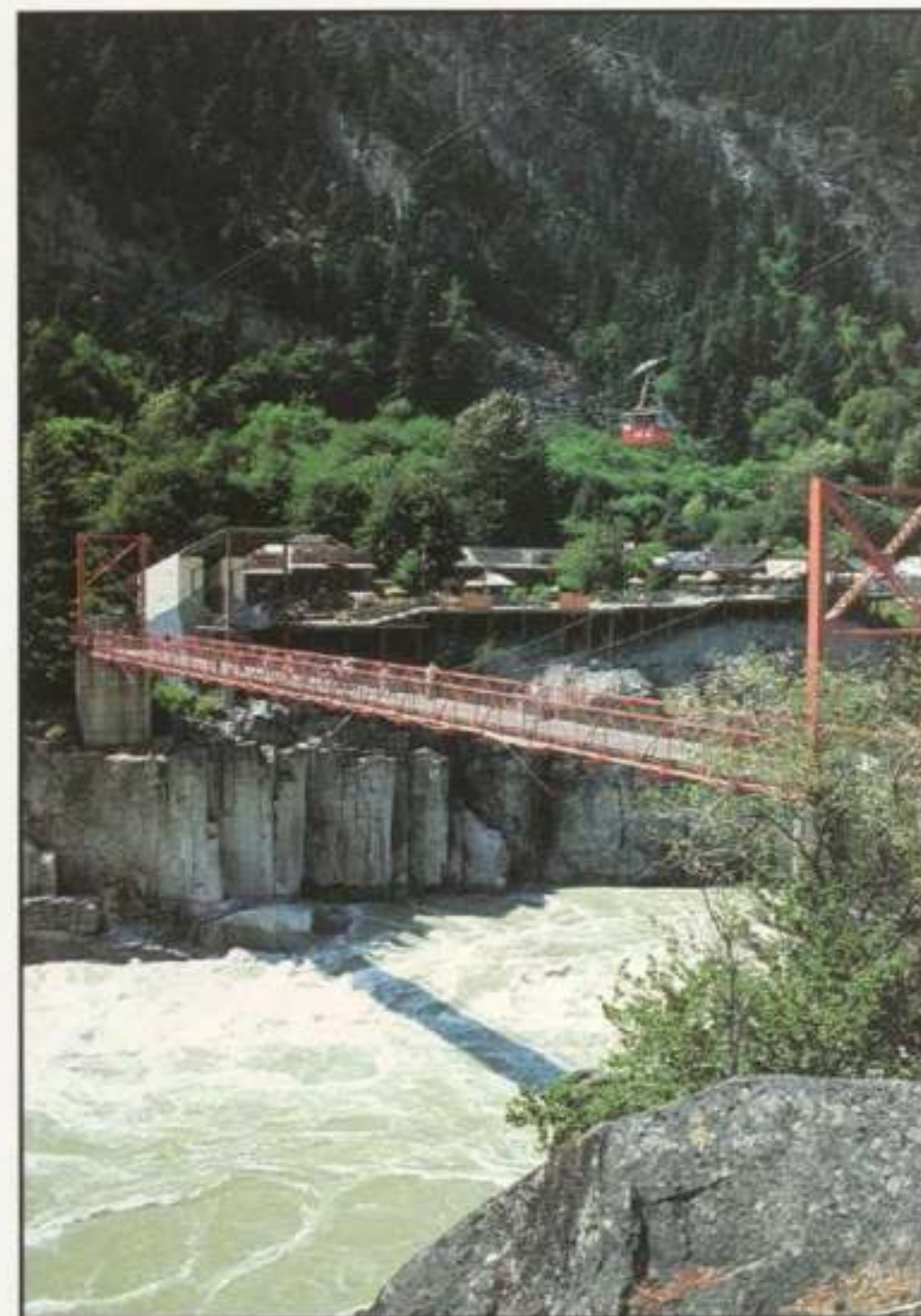
## The Coast Mountain Circle

British Columbia is truly a super, natural province, and nowhere is this more apparent than on the Coast Mountain Circle. This tour is a convenient way for you to experience British Columbia's splendour. The 700 km. (440 mi.) trip takes you through the heart of South-western B.C. and parts of both the Cariboo and High Country. Get ready to encounter spectacular ocean and mountain scenery, as well as powerful echoes of the gold rush era.

With Vancouver as your starting point, head north on the Sea to Sky Highway (Hwy. 99) as it follows Howe Sound to Squamish. Points of interest include Porteau Cove Marine Park (a favourite of scuba divers), the B.C. Museum of Mining at Britannia Beach,

and the third highest waterfall in Canada, Shannon Falls. If you're a windsurfer or a rock climber, you'll definitely want to stop in Squamish, where like-minded enthusiasts come to test their skills.

Whistler welcomes you all year round. It is considered by many to be the number one winter ski resort in North America, while in summer its shimmering lakes and postcard-perfect scenery are a powerful magnet for all who appreciate Nature's beauty.



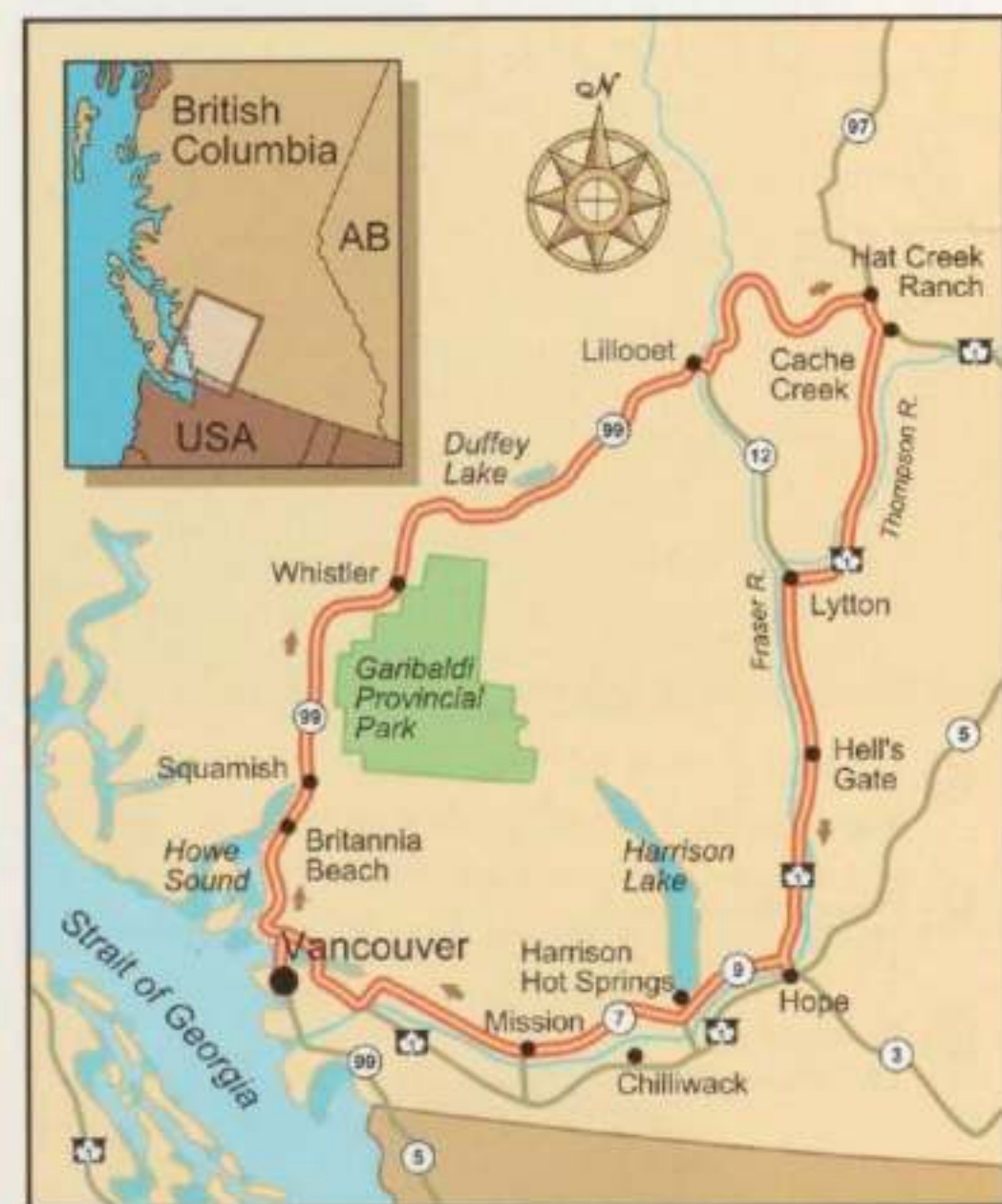
▲ Hell's Gate

Continue on Highway 99 as it curves its way through 90 km of spectacular Coast Mountain wilderness and past scenic Duffey Lake. Choose from among several superb camping and fishing sites. Stop at historic Lillooet, where you can step past the tumbleweed and enter the gold rush era.

Continue on to Hat

Creek Ranch, then turn south to TransCanada Highway 1 and you'll pass through Cache Creek, Ashcroft and Lytton, meeting point for the Fraser and Thompson Rivers. Follow the Fraser Canyon and be sure to stop for pictures at Hell's Gate.

Continuing south to Hope, you have the option of taking either Highway 1 or the more tranquil Highway 7. Both cut through the picturesque Fraser Valley. Other attractions you may want to visit before arriving back in Vancouver are the Harrison Hot Springs Resort and Westminster Abbey, a Benedictine monastery.



# 10 Great Canadian Drives **Alberta**

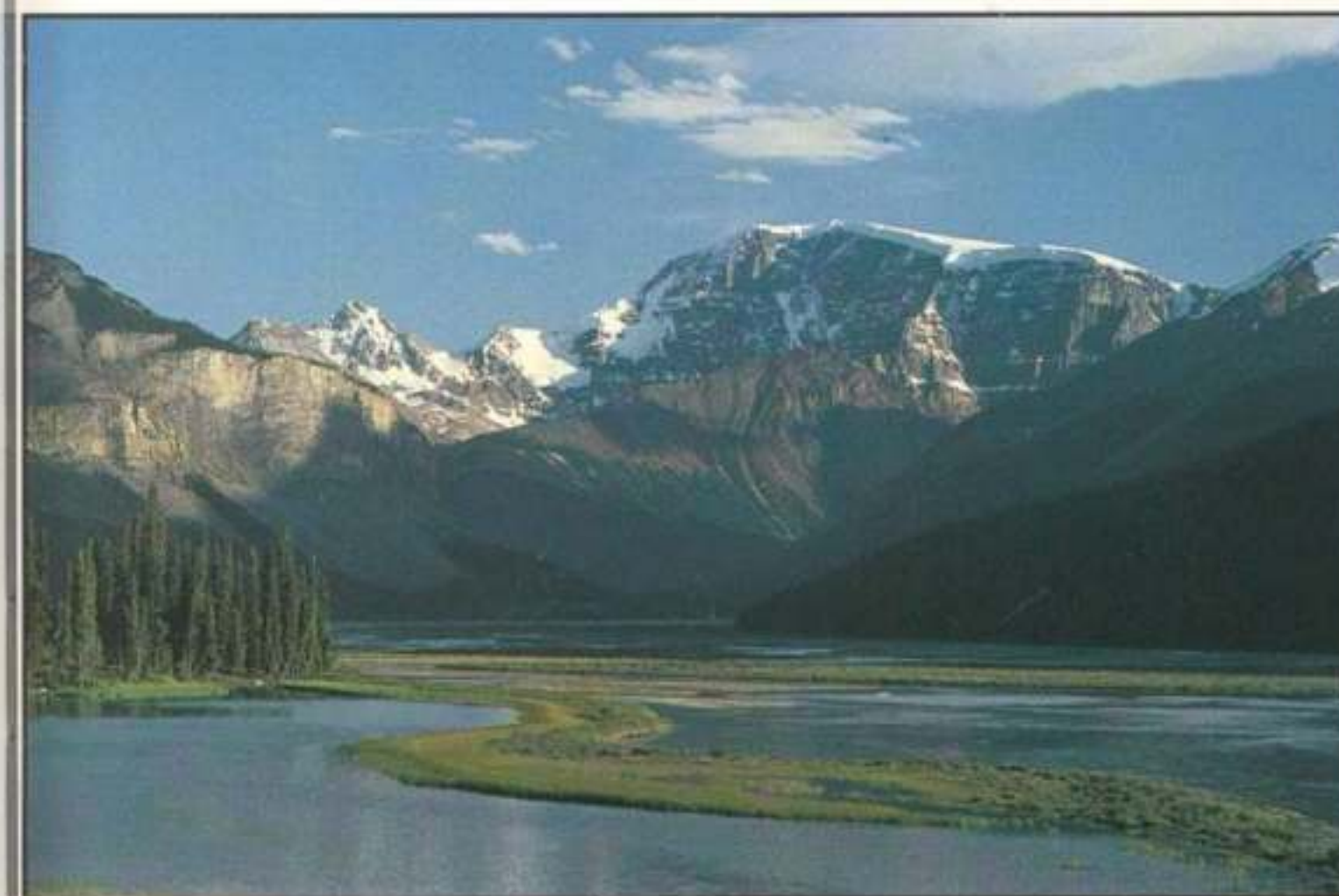
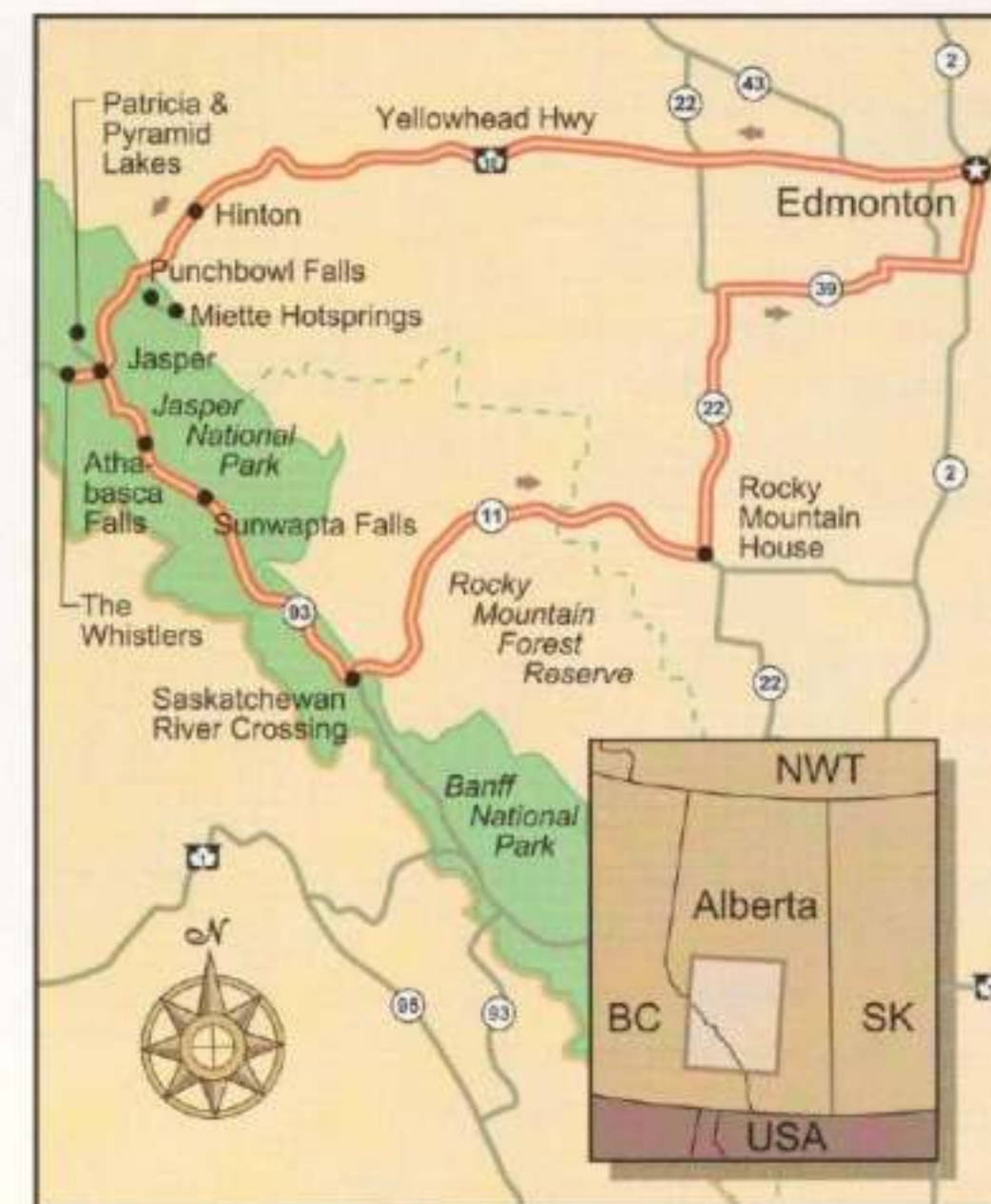
## The Jasper-Icefield Circle Tour

This tour shows you Nature at its most powerful, most tranquil and most beautiful. It's also a trip back in time, on terrain largely unchanged since the Ice Age. The most dramatic portion of the 874 km. (546 mi.) drive occurs in Jasper National Park. Have your camera ready to capture the stunning panoramas that surround you.

From Edmonton follow the Yellowhead Hwy. (#16) west towards Hinton. Continue on Hwy. 16 to the beautiful town of Jasper and majestic Jasper National Park.

The Icefields Parkway (Hwy. 93 and its offshoots) takes you through the Park along a 154 km. (96 mi.) route, past spectacular vistas of snowcapped mountains, waterfalls, lakes and rivers. Wildlife abounds; you may see caribou, a grizzly bear, bighorn rams or Rocky Mountain goats. (Do not try to touch or feed any wildlife.)

At the north end of the Park and east of the town of Jasper follow Hwy. 16 East to the picturesque Punchbowl Falls, the restoring waters of Miette Hotsprings and the spectacular Maligne Valley, Lake and Canyon. Closer to the town, take the Jasper Tramway up Whistler's Mountain to an elevation of 2285 m. (7469 ft.) and see mountain vistas that stretch for over 80 km. Or follow the winding road to Patricia and Pyramid Lakes, or nearby Lakes Edith, Annette and Lac Beauvert.



▲ Jasper National Park

Heading southeast on Icefields Parkway you'll see the Athabasca Falls, among the most powerful waterfalls anywhere in the Rockies. Goat Lookout offers you a sweeping view of the Athabasca Valley and a chance to see mountain sheep, ram and goats, and Sunwapta Falls plunges in all its fury into a deep canyon.

Leave Icefields Parkway at the Saskatchewan River Crossing and take Hwy. 11 to Rocky Mountain House, a small town that once served as a fur-trading post. Take Hwy. 22, then 39 back to Edmonton.

# 10 Great Canadian Drives

## Saskatchewan

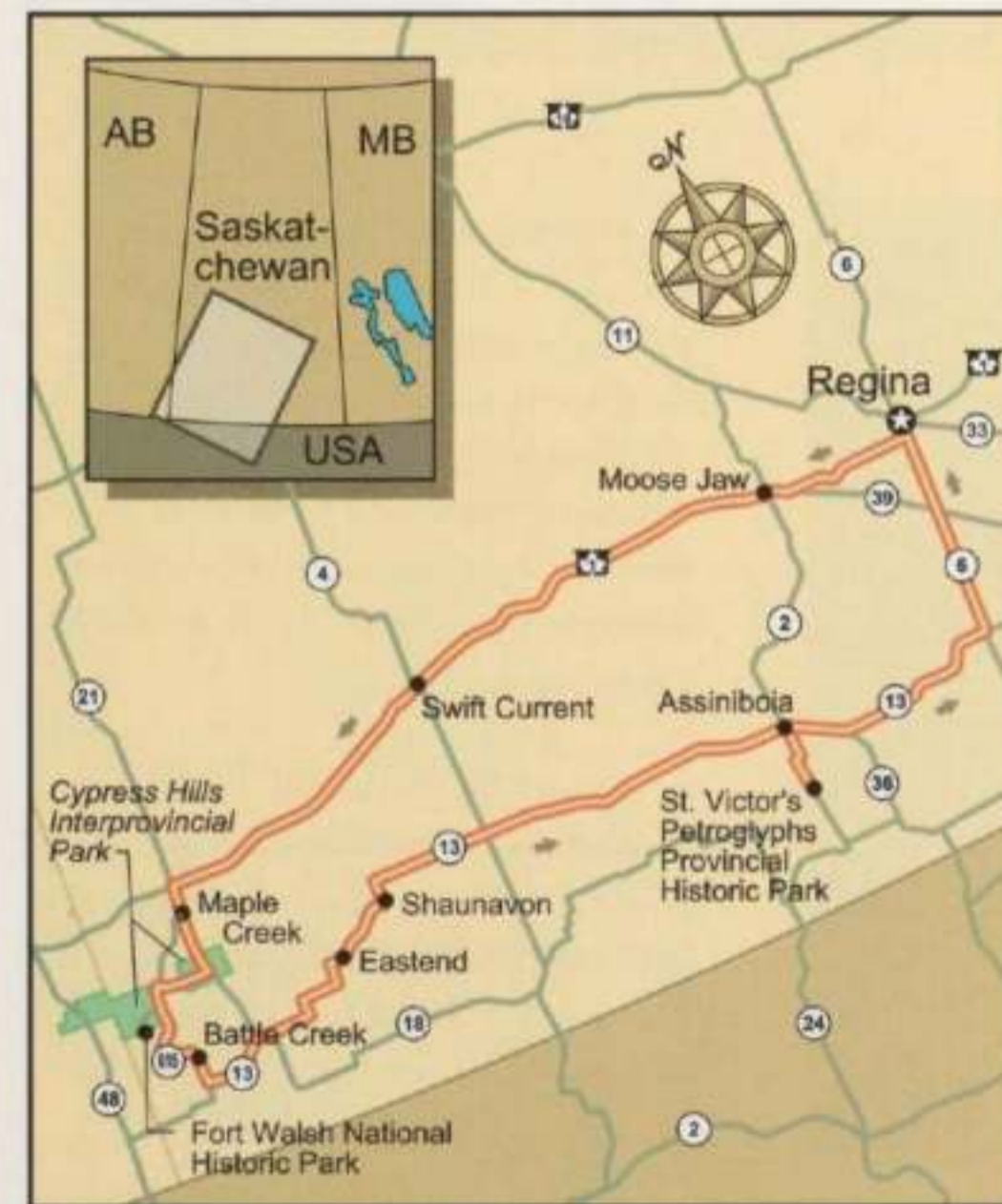
### The Cowboy Country Tour

Travel the wide open spaces of Southwest Saskatchewan and you'll be surrounded by vivid reminders of life in the Old West. Vast ranchlands, badlands and prairie stretch out before you, and range animals dot the landscape. Sit back, relax and enjoy 932 km. (578 mi.) of Cowboy Country, past and present.

Leaving Regina, take Hwy. 1 to Moose Jaw and the pleasant Wakamow Valley for bird watching, cycling or walking. Continue on to Swift Current and drop in on the new Canadian Country Music Hall of Fame. Then take Hwy. 21 south to Maple Creek, with its Main Street eerily reminiscent of the Old West. Keep an eye out for pronghorn antelope along the way.



▲ Fort Walsh National Historic Park



Continue on to the surprising Cypress Hills Provincial Park, whose hills rise almost 600 metres, the highest points of land between the Rockies and Labrador. Here you'll see pine and rare wildflowers, prairie falcons and moose, and a startling variety of songbirds. It's a short jog to Fort Walsh National Historic Park, where you'll find authentic re-creations of a Mountie post and, in nearby Battle Creek, Farwell's Trading Post.

Turn onto Hwy. 13, the famous "Redcoat Trail" that honours the Northwest Mounted Police, and head for Eastend. Here you can gaze at stars on a clear prairie night from a small observatory, tour the Valley of the Hidden Secrets, and view the locally-unearthed dinosaur specimens at the Eastend Museum.

Follow Hwy. 13 to Shaunavon, where you can view Indian and pioneer artifacts and enjoy one of the many local fairs and rodeos. Continue on to Assiniboia, then take Hwy. 2 south to St. Victor's Petroglyphs Historic Park and see 2,000 year old rock carvings depicting the Indian way of life. Rejoin Hwy. 13, connect with Hwy. 6 and return to Regina.

# 10 Great Canadian Drives

## Manitoba

### The Southeastern Tour

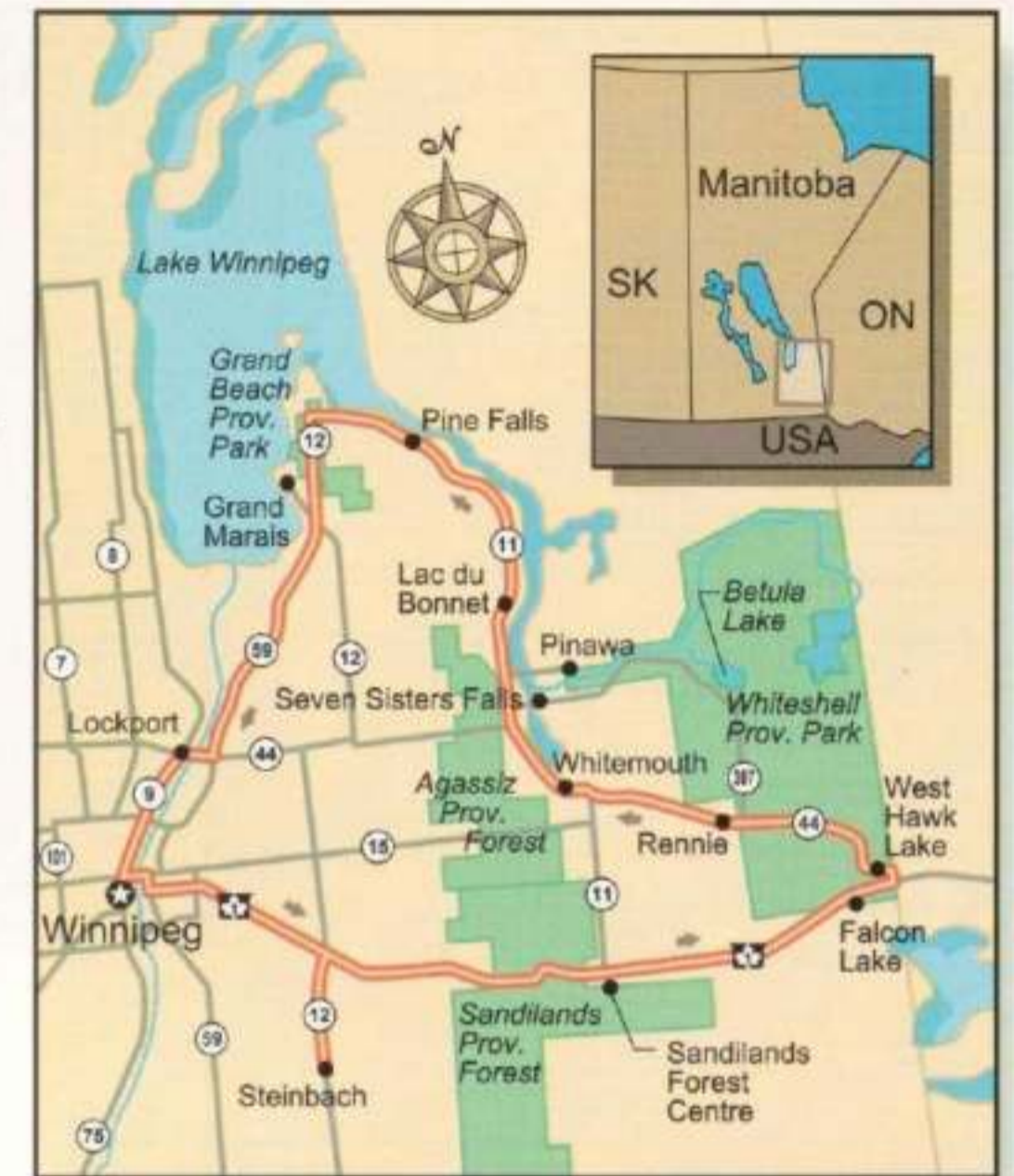
The Southeastern Tour is Manitoba in miniature. Only 477 km. (297 mi.) in length, it offers you a convenient way to experience this province's splendid variety. You'll find it a perfect introduction to the natural beauty and rich history of this rugged province.

Take Hwy. 1 southeast from Winnipeg, then Hwy. 12 south to Steinbach and the Mennonite Heritage Village, a faithful re-creation of the Mennonite community and its way of life. (If you're there in late July or early August, don't miss Steinbach's lively Pioneer Days.)

Return to Hwy. 1 via Hwy. 12 and head east towards Sandilands Forest Centre which features a variety of forest environments and wildlife displays. Continue east on Hwy. 12 towards Falcon Lake, then on to West Hawk Lake, the billions year old red rock cliffs of

Whiteshell Provincial Park, beautiful Lily Pond and, north of Betula Lake, the ancient ceremonial medicine ground along Whiteshell River with its intriguing petro-forms in the shape of birds and other of nature's creatures.

Driving through the park interior from Falcon Lake to Rennie on Hwy. 44 is an especially beautiful route, so don't miss it. Continue on Hwy. 44 past Whittemouth to the Seven Sisters Falls with its 18-metre (61 ft.) power-generating waterfall; you can also



tour the Whiteshell Nuclear Research Establishment in nearby Pinawa.

Take Hwy. 44, then 11, north to Lac du Bonnet. The 42 km (26 mi.) drive from here to Pine Falls is especially beautiful; keep your eyes open for the occasional woodland caribou as you follow in the path of trappers and gold seekers of old.

Continue north on Hwy. 11, then take Hwy. 12 south to Grand Marais and nearby Grand Beach, with its white sand, gentle surf and spectacular sunsets. Follow Hwys. 12 and 59 south, then Hwy. 44 west to Lockport's Heritage Park and continue along the picturesque Red River Heritage Parkway. Return to Winnipeg via Hwy. 59.



▲ Riding Mt. Park

# 10 Great Canadian Drives

## Ontario

### Voyageurs' Circle Tour

Only 663 km. (413 mi.) long, this unique drive through Ontario's East is dazzling in its diversity. Follow its highways and byways from the nation's capital to the edge of the Near North, and glide through valleys and towns that have preserved more than a little of their past.

Leave Ottawa and take Hwy. 17 through picturesque lake, river and forest country to Renfrew. Nearby sights include Storyland, with its immense display of fairytale stories and characters (some animated), set in a charming forest environment; Logos Land, a biblical theme park; and Champlain Lookout, which offers you a beautiful panoramic view of the Ottawa River.



▲ Ottawa

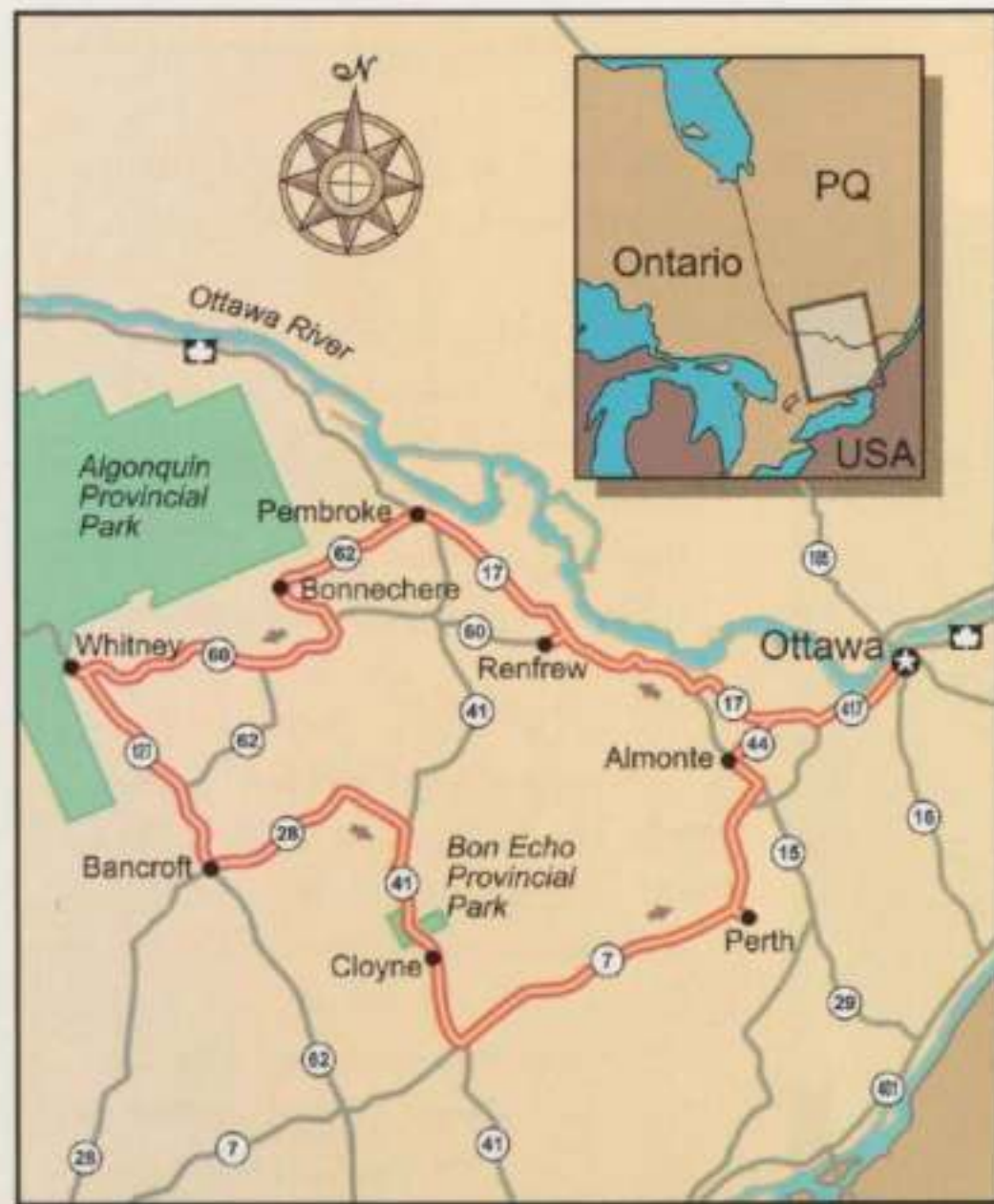
Continue on Hwy. 17 to Pembroke, where you can view historical artifacts at the Champlain Trail Museum; visit Swallow Roost, the resting grounds for large flocks of migrating swallows and water birds; or go white water rafting on the surging Ottawa River.

Follow Hwy. 62 west through Bonnechere, and continue on Hwy. 60 to Whitney, the eastern gate to the un-sullied natural beauty of Algonquin Provincial Park. Then follow Hwys. 127 and 62 southeast to Bancroft, (a mecca for rock-hounds), on the edge of

the Pre-Cambrian Shield. Have a picnic at Eagle's Nest Lookout, which overlooks the town and countryside.

Take Hwy. 28 east, then Hwy. 41 south to Bon Echo Provincial Park and Cloyne, a beautiful village in the heart of the Land of Lakes. Walk to the park's summit and see why the Park is so aptly named. Continue on Hwy. 41 south to Hwy. 7, then head east to Perth, a beautiful little town with a restored 19th-century Main Street. Be sure to see the model of Perth's famous Mammoth Cheese that was displayed at the Chicago World's Fair of 1893.

Take Hwys. 7, 7B and 15 to Almonte, a photogenic village with a pretty waterfall on Canada's own Mississippi River. You'll also want to see the nearby Mill of Kintail and the sculptures and artifacts it displays. Follow Hwys. 44, 17 and 417 back to Ottawa.



# 10 Great Canadian Drives

## Quebec

### The Navigators' Route

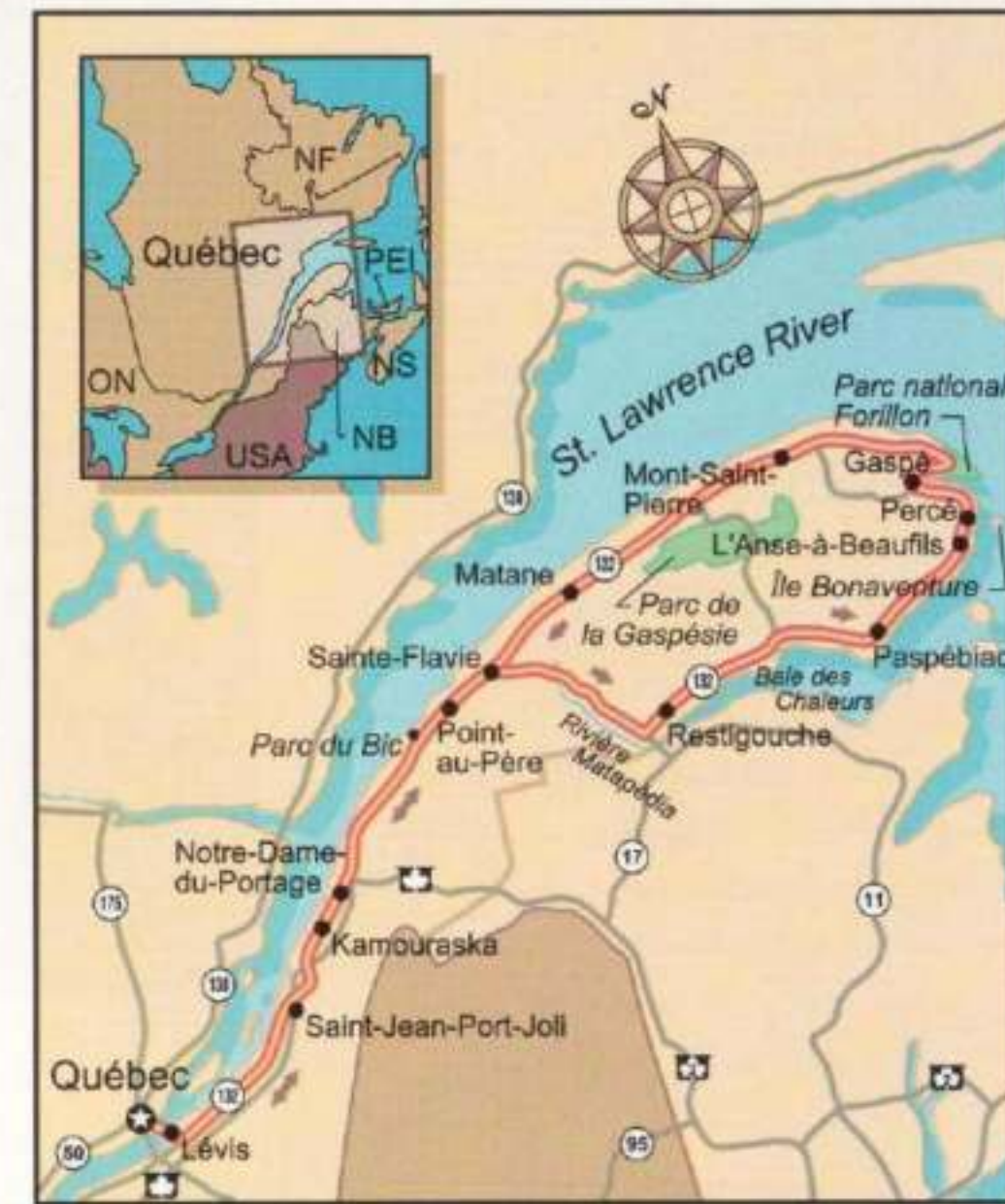
If your imagination is stirred by picturesque fishing villages, a dramatic mountain coastline and spectacular ocean sunsets, take the Navigators' Route (Hwy. 132) through the Gaspé Peninsula. A magnificent array of natural splendour awaits you. Given its length - 1,530 km (950 mi.) - plan to set aside a full week to explore its many delights.

From Quebec City, ferry across the St. Lawrence River to Lévis and join Highway 132 East as it follows the river through a string of charming towns and villages.

In Saint-Jean-Port-Joli, you can admire the art and handicrafts of Québec's finest craftspeople. In Kamouraska, wait for low tide and wade to its beautiful islands. And have your camera ready as you approach Notre-Dame-du-Portage, a jewel set alongside the river.

As you enter Bic, you're presented with a beautiful panorama of settlement, bay and islands. Parc du Bic hugs the river and offers even more scenic splendour. Further along, Point-au-Père Lighthouse Historic Park is a perfect stop for those with a yen for local maritime history.

At Sainte-Flavie head south on Hwy. 132 to the Matapédia Valley; continue on to Baie des Chaleurs, where from the top of Mont Saint-Joseph your view stretches from the Gaspé shore clear to the coast of New Brunswick.



▲ Percé Rock

Past L'Anse-a-Beaufils, Percé Rock rises dramatically out of the sea. You can walk out to it at low tide. Try to be there when the late afternoon sun brings out its warm colours. Nearby at Ile Bonaventure, the largest bird sanctuary in North America awaits you. In the town of Percé, make sure you view the bay from that splendid vantage point, the Pic de l'Aurore. Further on, Gaspé is where Jacques Cartier stepped ashore to claim this land for France. And Forillon National Park offers beautiful, untrammelled landscapes.

Leave the Atlantic coast and head back down through the beauty of the river towns and villages of the St. Lawrence to Matane and Sainte-Flavie, then retrace your steps back along Hwy. 132 to Quebec City.

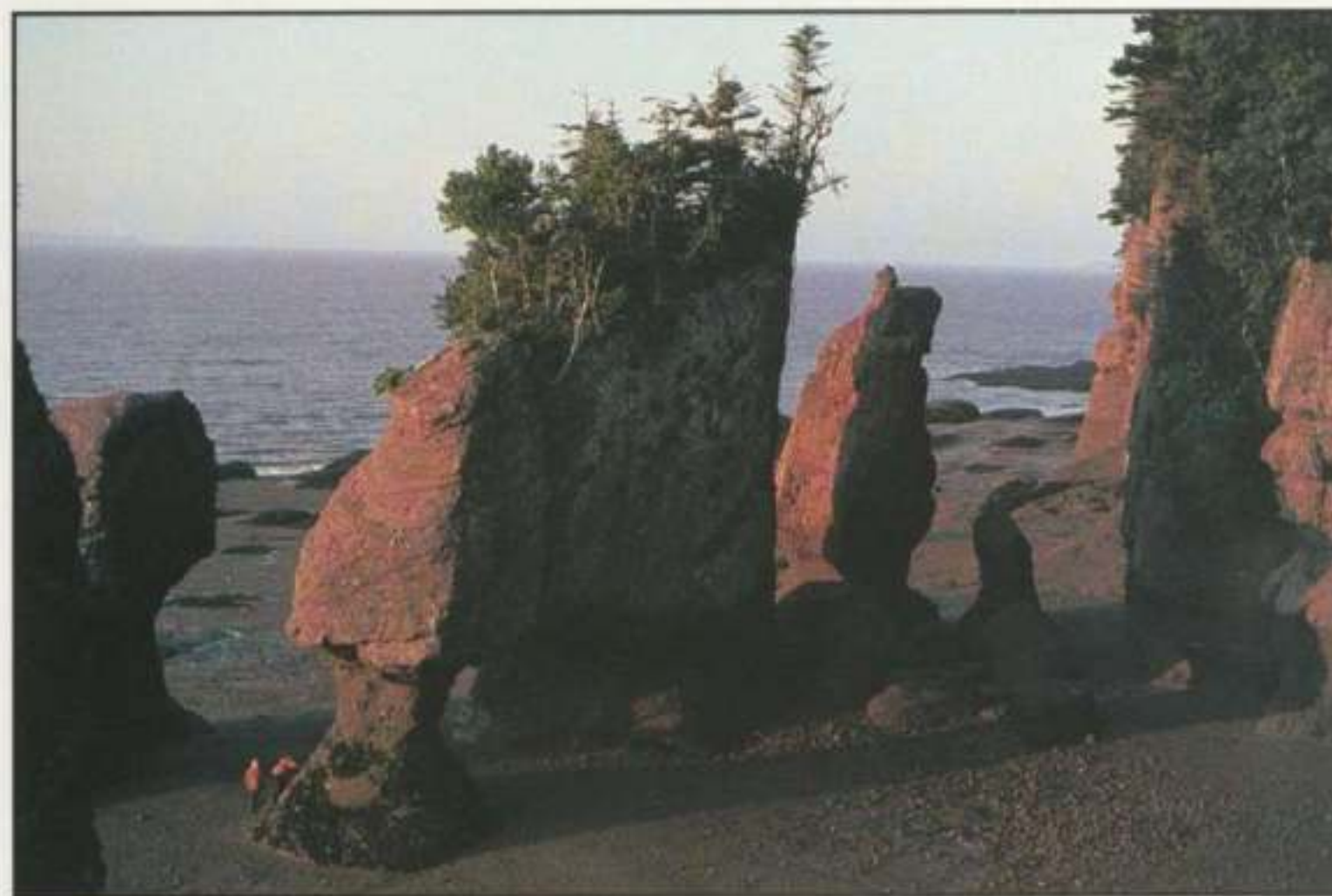
# 10 Great Canadian Drives

## New Brunswick

### The South Central Tour

The richness of New Brunswick's history is matched only by its scenic beauty. Loyalist and Acadian lore mingle alongside such natural wonders as the world's highest tides, lovely islands, rocky coasts and tall forests. This 828 km. (515 mi.) drive begins in Moncton, site of the amazing - and baffling - Magnetic Hill, where you'll swear you're coasting "uphill".

From Moncton, follow Hwy. 114 south along the picturesque Petitcodiac River to Hopewell Cape and Rocks Provincial Park. Here you can walk on the ocean floor among the amazing Flowerpot Rocks, carved over the centuries by the famous Fundy tides - the highest and wildest tides in the world.



▲ Hopewell Cape, Flowerpot Rocks

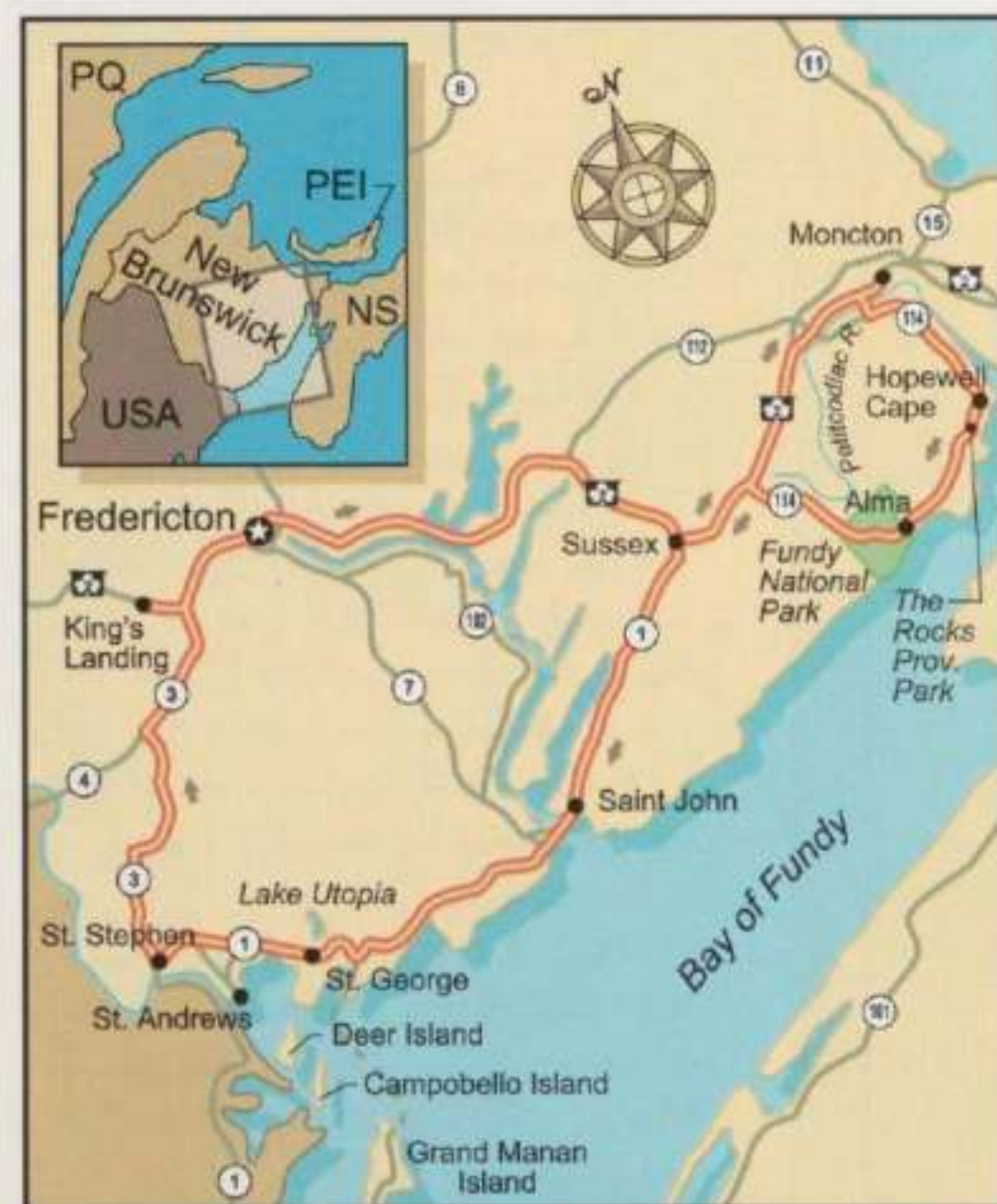
Travel along the rugged coastline on Hwy. 114 to Fundy National Park and the town of Alma, where you can find rare rock specimens on the beach. Continue on Hwys. 114 and 2 to Sussex on Hwy. 1, where you'll discover an enticing variety of artisans' studios which produce superb art and handicrafts.

Hwy. 1 leads you to Saint John. Among its capital delights: fashionable Market Square, just above the spot where the United Empire Loyalists landed in 1783; the City Market, with its

distinctive Maritime offerings; and the Reversing Falls, where the powerful Fundy tides force the Saint John River to foam, swirl and flow upstream.

Take Hwy. 1 to St. George and Lake Utopia, where you can watch osprey swoop for fish. Or take ferries to beautiful Grand Manan Island, Deer Island (site of the largest tidal whirlpool in the Western Hemisphere), or Campobello Island, former summer home of U.S. President Franklin Roosevelt.

Follow Hwys. 1 and 127 to the world-renowned coastal resort of St. Andrews. Then take Hwys. 127 north and 1 to St. Stephen and Hwy. 3 north to King's Landing Historical Settlement, which re-creates Loyalist life in the 1800's. Follow Hwy. 2 to Fredericton, the City of Stately Elms, which is filled with history. Then continue on Hwy. 2 and return to Moncton.



# 10 Great Canadian Drives

## Nova Scotia

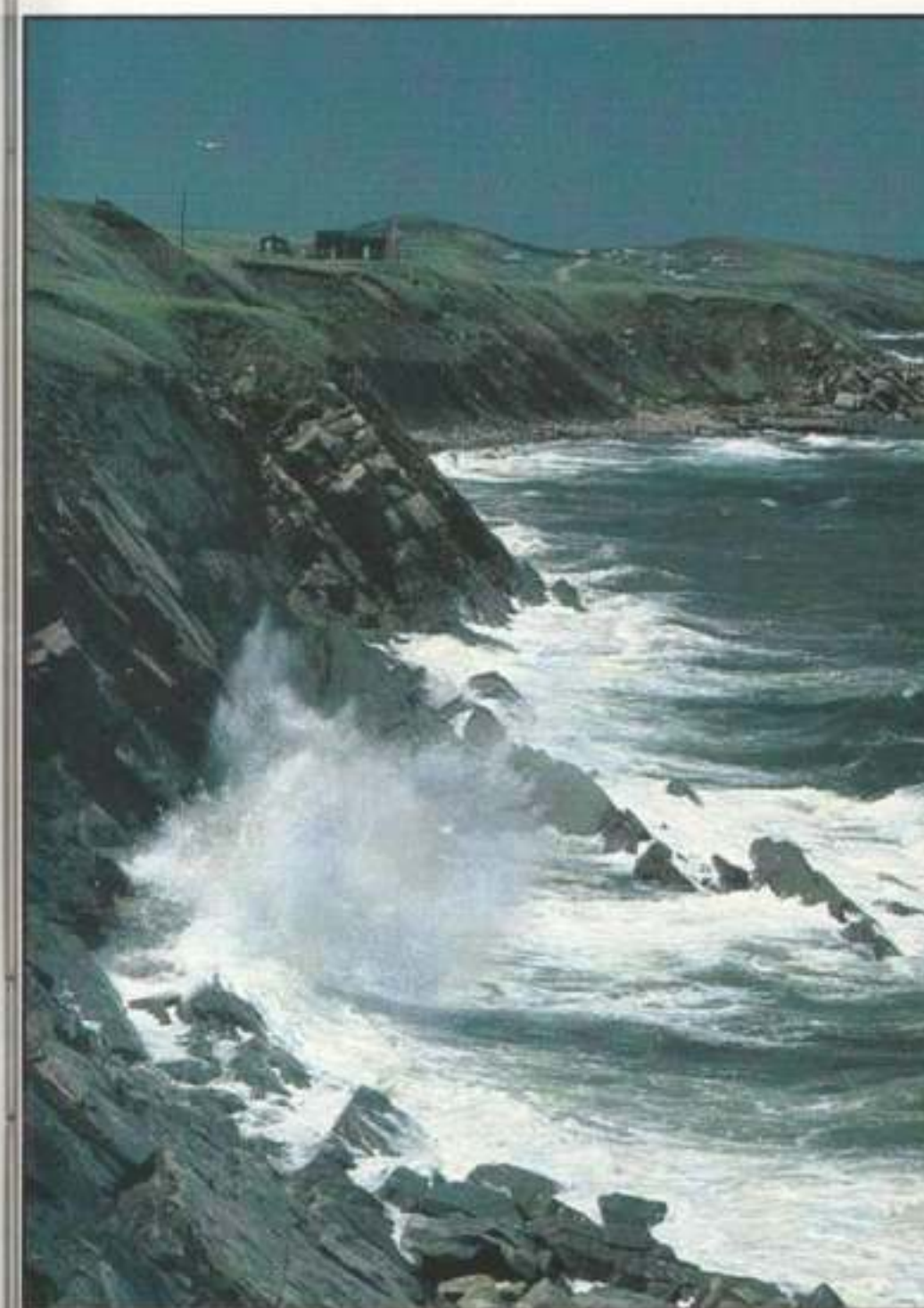
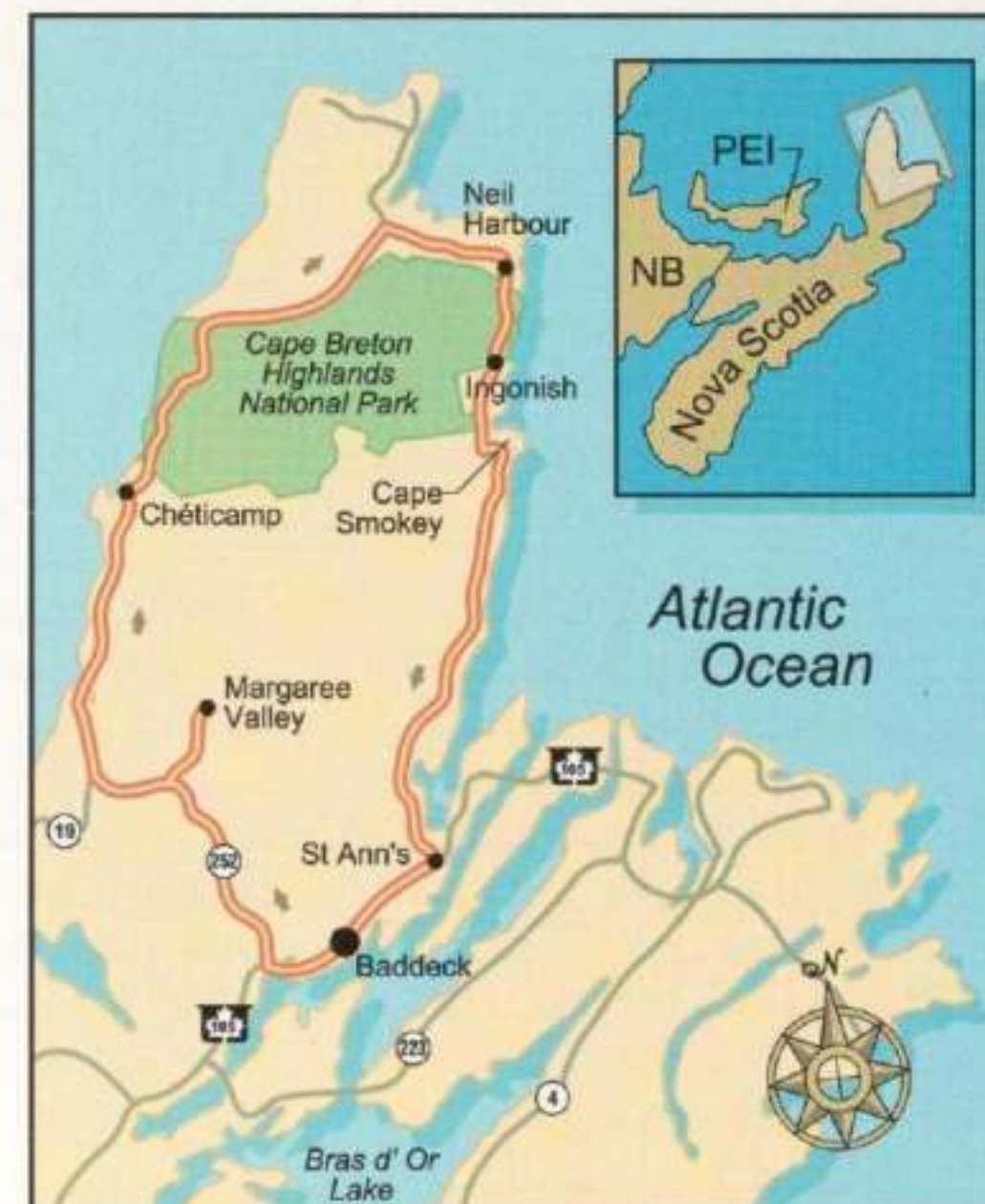
### The Cabot Trail

The Cabot Trail encircles the northern plateau of Cape Breton Island. Named for explorer John Cabot, this 296 km. (184 mi.) loop has been described as one of the most spectacular drives in North America. It offers you breathtaking panoramas of land, sea and sky, as well as memorable encounters with founding cultures and Highland history.

The Cabot Trail begins in Baddeck, once the summer home of inventor Alexander Graham Bell. All year round visitors flock to the Alexander Graham Bell National Historic Site, which commemorates his genius. Take Highway

105 southwest and head for the Margaree Valley, where you can witness the spring and fall salmon run. Continue on to Cheticamp, an Acadian fishing village where you'll find the work of local artisans who have transformed knitting, crocheting and rug hooking into an art.

Just past Cheticamp is the west



▲ Margaree Harbour

entrance to Cape Breton Highlands National Park, which contains an incredible variety of wind-swept ridges, spectacular ocean vistas, wilderness trails and wildlife. If you wish, pull over at designated picnic areas and lookoffs (some are wheelchair accessible). The views and the photographic possibilities are stunning.

You'll wind, climb and curve across four mountain ranges that are the northern reaches of the Appalachians - French Mountain, MacKenzie Mountain, North Mountain and

Cape Smokey. One of many picturesque stopping points is Neil Harbour, situated between North Mountain and Cape Smokey. Further along at Ingonish, you'll find one of the oldest settled areas on the Atlantic seaboard. Continuing south, you'll ascend Cape Smokey, then descend some 360 m (1,200 ft.) in less than 3.2 km (2 mi.). (Be sure to slip into a lower gear.)

The last leg of the Cabot Trail straightens out, taking you through several charming towns and fishing villages. In South Gut St. Ann's you'll find the Gaelic College of Celtic Arts and Crafts, a fascinating centre of historic Celtic crafts and culture and the only Gaelic college in North America. Continue south and west on Highways 105 and 205 and return to Baddeck.

# 10 Great Canadian Drives

## Prince Edward Island

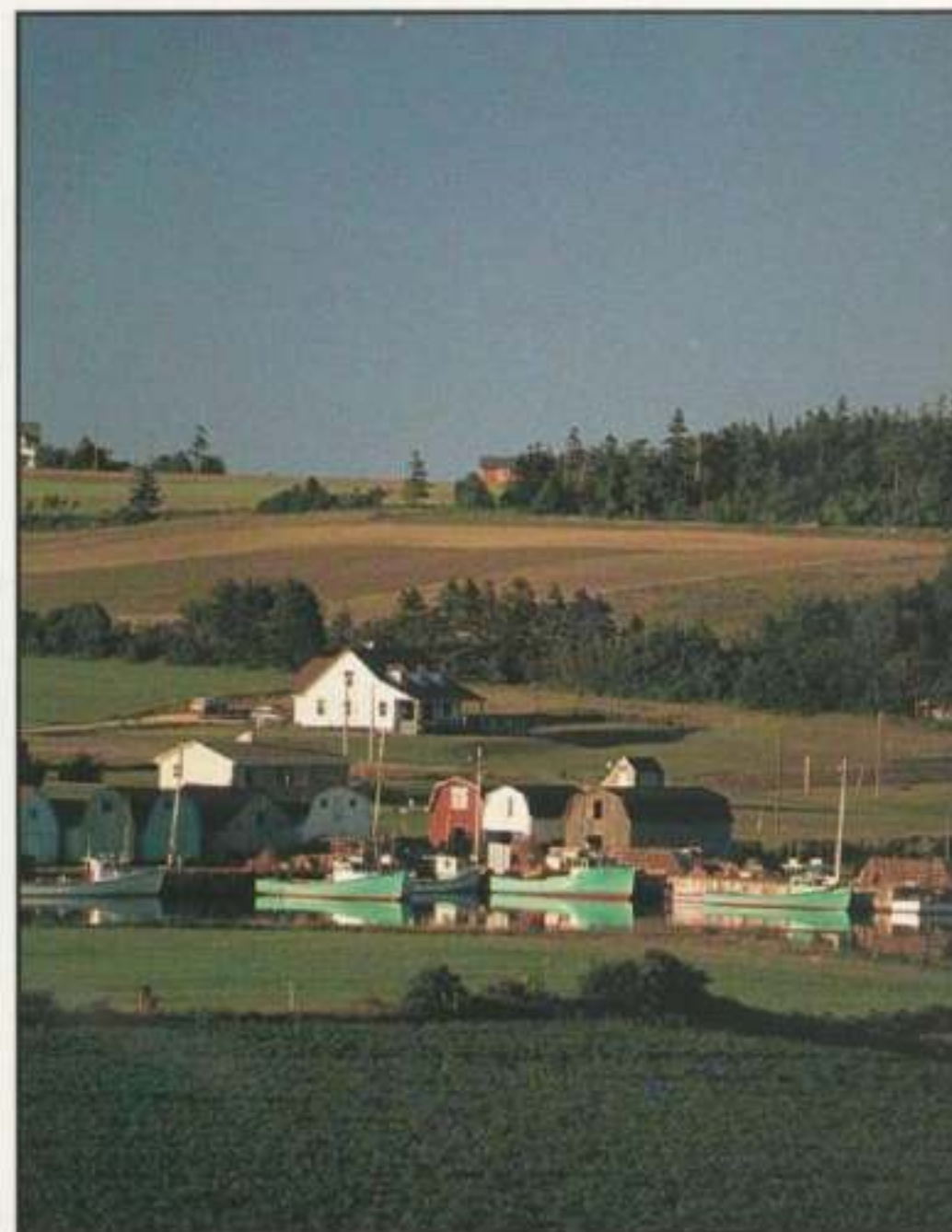
### The Blue Heron Drive

Prince Edward Island is so compact and picturesque, it's not so much a question of which scenic drive to follow, but which one to follow first. The 185 km. (116 mi.) Blue Heron Drive leads you through the central north and south shores and is a perfect way to start, especially if you've been captivated by the 'Anne of Green Gables' stories.

Leave Charlottetown via the Kings Byway north (Route 2), then turn left onto Brackley Point Road (Route 15) and aim for the Prince Edward Island National Park and the fantastic beaches that boast the warmest ocean waters north of the Carolinas. Head west to South Rustico and take a quick side trip south on Route 258 to New Glasgow, a beautiful village where you can stroll,

snap pictures and enjoy a leisurely cup of tea.

Backtrack a little to rejoin the Blue Heron Drive, then continue west to Cavendish and explore the Green Gables House so familiar to 'Anne' fans. As you continue west on Route 20, take out your video or snapshot camera; the scenic beauty you'll encounter here is some of the best on the Island. Stroll through the lovely fishing port of French River. Then resume your mini 'Anne' tour in Silver Bush over a cup of tea at



▲ French River

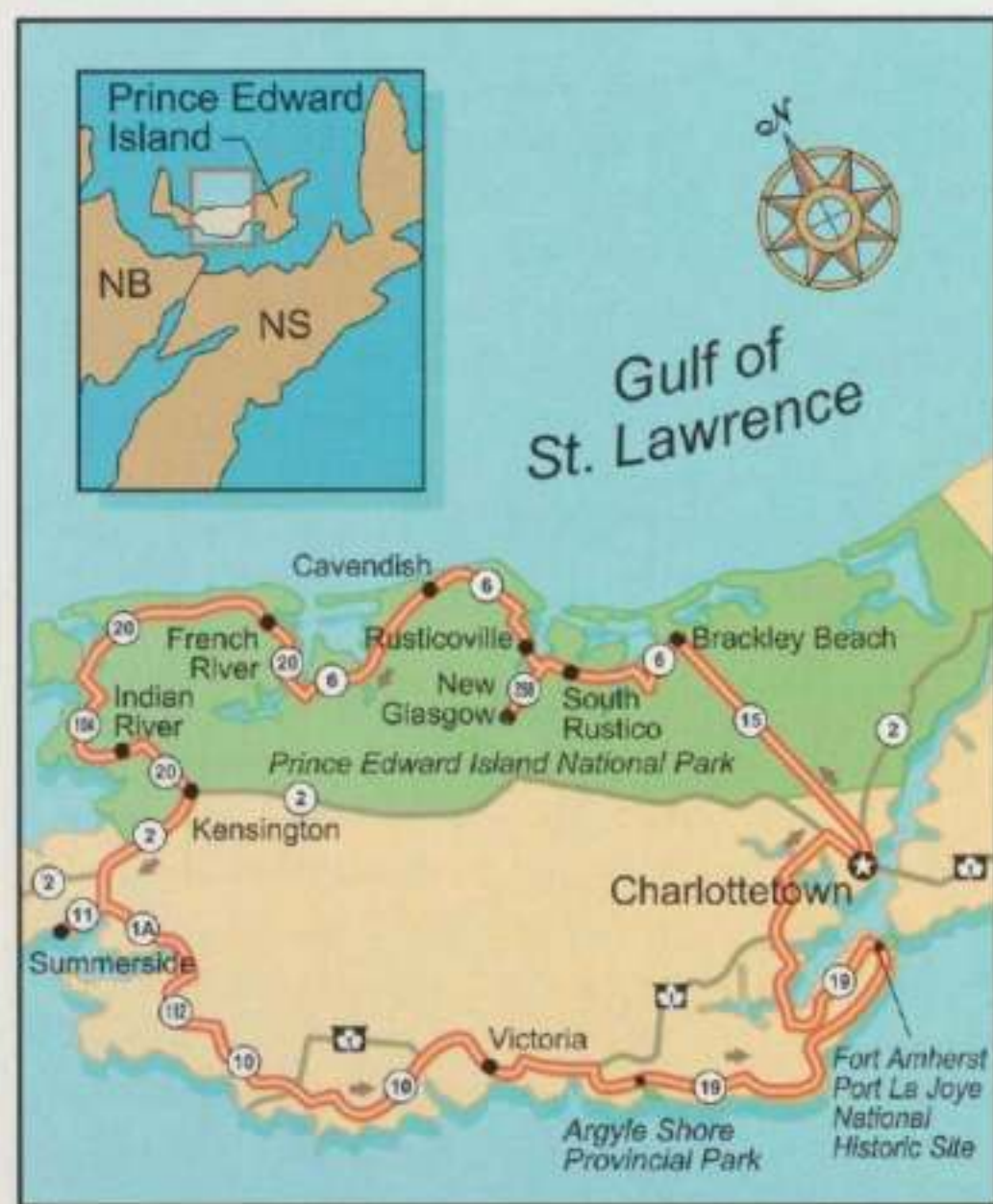
the Shining Waters Tea Room (Lucy Maude Montgomery was married here), and in Malpeque, with its Green Gables-themed garden.

At Indian River, visit the beautifully restored St. Mary's Church, or spot osprey, bald eagles and shore birds along its nature trail. In Kensington, you can view the illuminations of local scenes and

the historic stone railway station.

Summerside offers all the delights of the Island's second largest community. Stay over, or continue along the South Shore where you'll see an abundance of picture-perfect hills, rich red soil and meandering rivers.

Continue on through Victoria and the Argyle Shore all the way through to Fort Amherst/Port La Joye National Historic Site, a beautiful park that marks the first French settlement on the Island and the British fort that followed it. Turn on Blue Heron Drive, connect with TransCanada Highway 1 and return to Charlottetown.



# 10 Great Canadian Drives

## Newfoundland

### The Marine Drive

The communities of the Avalon are alive with history. That's hardly surprising when you consider that the Avalon was one of the first areas of Newfoundland to be settled some 400 years ago. Its residents are remarkably warm and welcoming too. But the Avalon offers you more than history and hospitality; it offers you any number of splendid scenic drives. The 70 km. (43 mi.) Marine Drive is one.

Leave St. John's by Route 30 (or as residents call it, Logy Bay Road), then follow scenic Marine Drive as it winds through one small, picturesque community after another. You'll drive through Logy Bay, where you may want to stop and take a guided tour of the Ocean Sciences Centre where continuing oceanographic research is conducted.

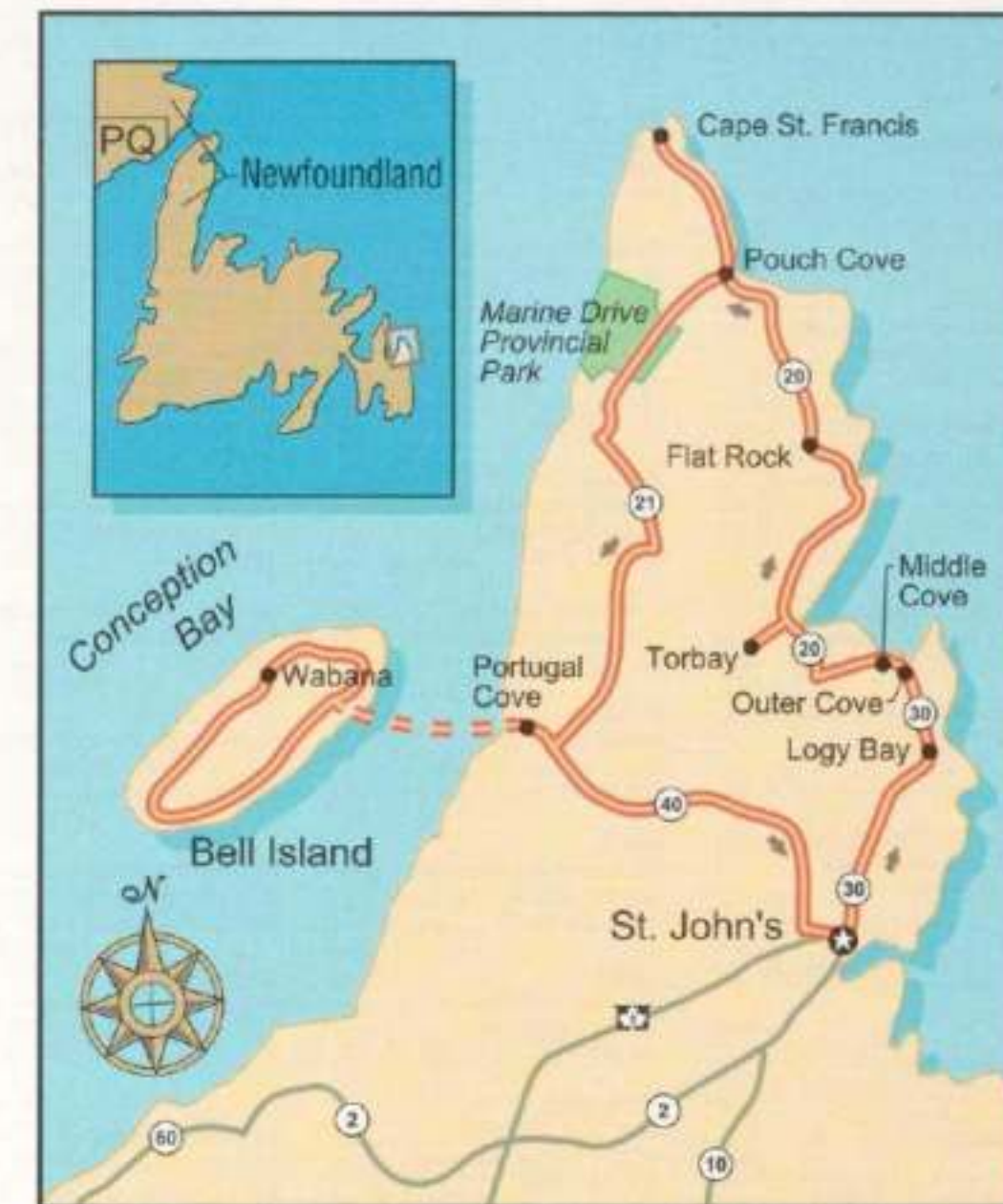
Continue along Marine Drive



▲ Pouch Cove

through Middle Cove and Outer Cove and enjoy a rugged and scenic coastline that rivals any along North America's east coast. Keep your camera and plenty of film handy, as there are scores of opportunities to pull into special roadside vantage points to take in the view and shoot pictures.

In 1762, historic Torbay was the base for British forces attempting to retake St. John's from the forces of France. Further along, on Route 20, is the



fishing community of Flat Rock, which dates back to 1689. Many tourists flock to its Grotto, the largest religious shrine of its kind east of Montreal. Next is the even older community of Pouch (pronounced "pooch") Cove, which was established sometime before 1611.

At the end of Route 20 at Pouch Cove you'll find Cape St. Francis, where the Atlantic spreads out to the north, east and west.

Head south along the coast to Portugal Cove and take a short ferry ride to Bell Island, or return via Route 40 to St. John's.





# Your Key To Saving For A Brand New Vehicle.



Use CIBC Ford VISA<sup>®</sup> and Save up to \$3,500\*\*  
Use CIBC Ford Gold VISA<sup>®</sup> and Save up to \$7,000\*\*

- Earn a 5% rebate from everyday purchases.
- Rebate earnings may be applied to the purchase or selected lease of any new Ford of Canada vehicle.
- Choose either the CIBC Ford VISA Card or the CIBC Ford Gold VISA Card.
- Rebates are in addition to any other incentives that may be in effect at the time of purchase or lease.
- Use either card to pay for residential long-distance calling with Unitel, book package holidays with Maclin Travel or rent a vehicle at participating Hertz locations and you'll earn

up to an additional 2% on top of your regular rebate.\*\* And there's no limit to how much extra you can earn.

- Apply now. Just call 1-800-465-CIBC (980-CIBC in Toronto), or visit your local Ford of Canada dealership or CIBC branch office.

Join the thousands of Canadians who have already applied the savings from this outstanding program towards the purchase of a new Ford of Canada vehicle.

*Your Key To Saving.*<sup>™</sup>

CIBC and Ford Motor Company of Canada, Limited, Licensee of Mark. \*\*Save up to a maximum of \$300 per year or \$3,500 in total with the CIBC Ford VISA Card and up to a maximum of \$1,000 per year or \$7,000 in total with the CIBC Ford Gold VISA Card. \*Subject to change and/or cancellation without notice. Some conditions and an annual fee apply. Ask for full details of this program.

<sup>™</sup> Trademark of CIBC