

SIMPLY CLEVER

ŠKODA



# The ŠKODA Octavia



Effective: November 2012

## Welcome to the Octavia

Built upon the core values of practicality, reliability and great value for money, the Octavia range has been delivering driving satisfaction for over 50 years.

The latest Octavia continues where its predecessors left off. With a great level of equipment across all trim levels, there is bound to be an Octavia to suit you.

### Versatility across the range.

From the entry level S, to the sporty vRS, to the top of the range Laurin & Klement, there is an Octavia to fit everyone.

In need of a four wheel drive? Then there's the 4x4, or the even more adventurous Scout.

**ŠKODA Assistance.** Every ŠKODA is covered by ŠKODA Roadside Assistance. So if you break down, even if you're on holiday or on business in Europe, you can use the freephone number to call someone to come and help you. Best of all it's completely free for 3 years.

**Safety.** With driver and passenger front and side airbags as standard on all models, the Octavia has safety at its core. The newly designed front headrests, which are standard across the range, have been developed with a new shape which help to protect your spine by minimising the effects of whiplash in an accident.

**Multimedia.** Standard on Elegance trim and above is a 3.5mm aux in socket. This allows MP3 players to be played through the radio, but with control remaining on the MP3 player. The optional MDI unit (standard in SE Plus) is a step forward in-car multimedia. This allows you to play and control your MP3 music files through the radio.

**DSG gearbox.** Get great acceleration, performance and fuel economy with the Octavia's DSG gearbox. Previously available only on diesel engines, the DSG (Direct Shift Gearbox) is now available on both diesel and petrol engines. Operating in fully automated or manual tiptronic, the DSG uses the very latest technology to ensure that comfortable gear shifting is achieved with excellent performance, fuel economy and of course acceleration.

**Air conditioning.** Stay cool in the Octavia with standard air conditioning. Available as manual and dual zone, air conditioning offers great advantages over standard ventilation, keeping your car cool during the summer months. Surprisingly, it also becomes an effective tool in winter, demisting the windows faster than standard ventilation. Not to mention the positive effect that air conditioning has on the value of your car when you come to change it.



 [facebook.com/Skodauk](https://www.facebook.com/Skodauk)

 [Youtube.com/skodaukchannel](https://www.youtube.com/skodaukchannel)





## Record breaking vRS

The Octavia has always been a car designed to fit around you, whether you prefer a quiet life, or like to live in the fast lane. But now the Octavia has taken living in the fast lane to the extreme by securing a place in history and breaking a land speed record!

On Friday 19th August 2011 at 7.45 am on the legendary Bonneville Salt Flats, a specially prepared 600PS 'salt spec' Octavia vRS broke the record to become the 'fastest 2.0 litre supercharged production car'.

The Octavia officially registered a Southern California Timing Association (SCTA) sanctioned speed of 227.080 mph.

As we celebrate this exceptional achievement, why not read on to find out how this outstanding car could fit your pace of life.



## The ŠKODA Octavia S

Hatchback	CO <sub>2</sub> (g/km)	VED Band**	Insurance Group (50)	Recommended Basic	VAT	RRP	Recommended OTR*	Business user information	
								BiK 2012/13	P11D Value
1.4 16V 80PS	149	F	7E	£10,570.83	£2,114.17	£12,685.00	£13,385.00	20%	£13,195.00
1.2 TSI 105PS ♦	134	E	13E	£11,208.33	£2,241.67	£13,450.00	£14,135.00	17%	£13,960.00
1.2 TSI 105PS DSG ♦	136	E	13E	£12,175.00	£2,435.00	£14,610.00	£15,295.00	18%	£15,120.00
1.4 TSI 122PS	148	F	16E	£11,641.67	£2,328.33	£13,970.00	£14,670.00	20%	£14,480.00
1.4 TSI 122PS DSG	147	F	16E	£12,608.33	£2,521.67	£15,130.00	£15,830.00	20%	£15,640.00
1.6 TDI CR 105PS DPF	119	C	14E	£13,279.17	£2,655.83	£15,935.00	£16,500.00	17%	£16,445.00
1.6 TDI CR 105PS DSG DPF	123	D	14E	£14,245.83	£2,849.17	£17,095.00	£17,660.00	18%	£17,605.00

Estate	CO <sub>2</sub> (g/km)	VED Band**	Insurance Group (50)	Recommended Basic	VAT	RRP	Recommended OTR*	Business user information	
								BiK 2012/13	P11D Value
1.4 16V 80PS ♦	149	F	tbc	£11,437.50	£2,287.50	£13,725.00	£14,425.00	20%	£14,235.00
1.2 TSI 105PS ♦	134	E	13E	£12,075.00	£2,415.00	£14,490.00	£15,175.00	17%	£15,000.00
1.2 TSI 105PS DSG ♦	136	E	13E	£13,041.67	£2,608.33	£15,650.00	£16,335.00	18%	£16,160.00
1.4 TSI 122PS	148	F	16E	£12,508.33	£2,501.67	£15,010.00	£15,710.00	20%	£15,520.00
1.4 TSI 122PS DSG	147	F	16E	£13,475.00	£2,695.00	£16,170.00	£16,870.00	20%	£16,680.00
1.6 TDI CR 105PS DPF	119	C	14E	£14,145.83	£2,829.17	£16,975.00	£17,540.00	17%	£17,485.00
1.6 TDI CR 105PS DSG DPF	123	D	14E	£15,112.50	£3,022.50	£18,135.00	£18,700.00	18%	£18,645.00

♦ Stock vehicles only please consult your retailer.

### Standard Equipment

15" 'Avantgarda' steel wheels (6.0J x 15" 195/65 R15 91H) (R15 T on 1.4 16V, R15 91V on 1.4 TSI)	Electronic engine immobiliser	Passenger airbag de-activation switch	<b>DSG only</b>	<b>Estate only</b>
4 loudspeakers	Folding rear seats	Passenger vanity mirror	Chrome inner door handles	Roof rails
4 spoke steering wheel	Fuel supply cut off switch	Radio 'SWING' - 2 DIN with CD player (can play MP3 recordings)	ESC incl ABS, EBV, MSR, ASR, EDS, HBA, DSR	Folding rear seats (60%/40% split)
ABS + MBA + MSR + ASR (without EDL)	Gear change recommendation (Manual only, not 1.4 16V or 1.6TDI)	Rear mudflaps	Leather gearknob	Storage box behind rear seats
Aero windscreen wipers with intermittent function	Halogen projector headlights with DE-module	Rear window wiper		<b>Service interval</b>
Air re-circulation with pollen filter	Height adjustable driver seat	Two ISOFIX child seat fittings in rear		Flexible servicing (see page 35 for more information on service interval options)
Black door mirrors and door handles	Height adjustable front and rear head restraints (three)	Tyre repair kit (no spare wheel) †		
Body coloured bumpers and protective side mouldings	Height and reach adjustable steering wheel			
Central locking (SAFE system)	High level third rear brakelight			
Driver and passenger front and side airbags	Illuminated luggage compartment			
Driver's seatbelt warning light	Interior light with door pillar switches			
Electric front windows	Internally adjustable headlight beam level			
Electrically adjustable and heated door mirrors with integrated indicators	Lashing eyelets in the luggage compartment			
Electro-mechanical power steering	Manual air conditioning			
	Outdoor temperature gauge			

For offers visit [www.skoda.co.uk/offers](http://www.skoda.co.uk/offers)

† With the standard 'Avantgarda' steel wheels it is possible to order a full size steel wheel as an option. When ordering the optional 15" 'Pyxis' alloy wheels, only a temporary 'Space saver' option is available. Temporary steel wheels and 'Space saver' spare wheels are restricted to 50mph. For further details please check page 20.



## The ŠKODA Octavia SE

Hatchback	CO <sub>2</sub> (g/km)	VED Band**	Insurance Group (50)	Recommended Basic	VAT	RRP	Recommended OTR*	Business user information	
								BiK 2012/13	P11D Value
1.2 TSI 105PS ♦	134	E	13E	£12,050.00	£2,410.00	£14,460.00	£15,145.00	17%	£14,970.00
1.2 TSI 105PS DSG ♦	136	E	13E	£13,016.67	£2,603.33	£15,620.00	£16,305.00	18%	£16,130.00
1.4 TSI 122PS	148	F	16E	£12,483.33	£2,496.67	£14,980.00	£15,680.00	20%	£15,490.00
1.4 TSI 122PS DSG	147	F	16E	£13,450.00	£2,690.00	£16,140.00	£16,840.00	20%	£16,650.00
1.6 TDI CR 105PS DPF	119	C	14E	£14,120.83	£2,824.17	£16,945.00	£17,510.00	17%	£17,455.00
1.6 TDI CR 105PS DSG DPF	123	D	14E	£15,087.50	£3,017.50	£18,105.00	£18,670.00	18%	£18,615.00
2.0 TDI CR 140PS	126	D	20E	£15,154.17	£3,030.83	£18,185.00	£18,750.00	19%	£18,695.00

Estate	CO <sub>2</sub> (g/km)	VED Band**	Insurance Group (50)	Recommended Basic	VAT	RRP	Recommended OTR*	Business user information	
								BiK 2012/13	P11D Value
1.2 TSI 105PS ♦	134	E	13E	£12,916.67	£2,583.33	£15,500.00	£16,185.00	17%	£16,010.00
1.2 TSI 105PS DSG ♦	136	E	13E	£13,883.33	£2,776.67	£16,660.00	£17,345.00	18%	£17,170.00
1.4 TSI 122PS	148	F	16E	£13,350.00	£2,670.00	£16,020.00	£16,720.00	20%	£16,530.00
1.4 TSI 122PS DSG	147	F	16E	£14,316.67	£2,863.33	£17,180.00	£17,880.00	20%	£17,690.00
1.6 TDI CR 105PS DPF	119	C	14E	£14,987.50	£2,997.50	£17,985.00	£18,550.00	17%	£18,495.00
1.6 TDI CR 105PS DSG DPF	123	D	14E	£15,954.17	£3,190.83	£19,145.00	£19,710.00	18%	£19,655.00
2.0 TDI CR 140PS	129	D	20E	£16,020.83	£3,204.17	£19,225.00	£19,790.00	19%	£19,735.00

♦ Stock vehicles only please consult your retailer.

### Standard Equipment (over S)

15" 'Pyxis' alloys with anti-theft wheel bolts (6.5J x 15" 195/65 R15V)	Body-coloured door mirrors and door handles	Illuminated glove box	Storage box under passenger seat	<b>Estate only</b>
2 interior lights	Chrome finished inner door handles	Rear electric windows (with child safety switch)	Tinted glass	Rear armrest and storage box
Additional 4 loudspeakers	Driver's vanity mirror	Remote central locking (SAFE system)	Touchscreen 'Bolero' radio - 2 DIN with integrated 6 CD changer (can play MP3 recordings)	
Alarm system with interior monitoring and backup horn	Height adjustable driver and passenger seats with lumbar support	Pockets on rear of front seats	Trip computer	
		Split and folding rear seats		

For offers visit [www.skoda.co.uk/offers](http://www.skoda.co.uk/offers)

With the standard 'Pyxis' alloy wheels and optional 17" 'Pallas' wheels it is only possible to order a temporary 'Space saver' spare wheel as an option. It is possible with the optional 16" 'Crateris' alloy wheels to order a full size steel wheel as an option. Temporary steel wheels and 'Space saver' spare wheels are restricted to 50mph. For further details please check page 20.

Band	CO <sub>2</sub> (g/km)	First 12 Months <sup>1</sup>	Standard VED <sup>2</sup>	OTR (Recommended On The Road)	<sup>1</sup> First year vehicle licence rates for petrol and diesel cars purchased on or after 1st April 2012. First year rate or 'showroom tax' applies to new car purchases only.	Company car tax is based on your car's carbon dioxide emissions. The higher the car's emissions, the higher its tax liability. When a company car is made available for private use a 'Benefit in Kind' value is calculated for tax purposes.	P11D (Expenses and Benefits)
A	Up to 100	£0	£0	* Recommended 'On the Road' prices include delivery, 12 months Road Fund Licence, DVLA First registration Fee (at £55), and apply to the United Kingdom only.			The P11D value is calculated by taking the On The Road (OTR) price for the vehicle, less the Road Fund Licence (RFL) and First Registration Fee (FRF).
B	101 - 110	£0	£20				
C	111 - 120	£0	£30				
D	121 - 130	£0	£100	<b>VED (Vehicle Excise Duty)</b>	<sup>2</sup> Rate reverts to the Government's applicable Standard VED rate in subsequent years.		
E	131 - 140	£120	£120	** All vehicles will be subject to Vehicle Excise Duty based on the fuel type of the vehicle and its carbon dioxide (CO <sub>2</sub> ) emissions level, measured in grams per kilometre (g/km). Due to changes in vehicle emissions data, CO <sub>2</sub> figures may differ on these vehicles if taken from current ŠKODA UK stock. The VED bands are shown in the table opposite.	Please confirm figures with your ŠKODA retailer. Edition: UK 1st April 2012. VAT is calculated at 20%. For fuel consumption data, please refer to page 26.	To help you work out your tax liability please refer to page 34.	BIK (Benefit in Kind) The BIK percentage value is based on the CO <sub>2</sub> emissions of the vehicle for the current tax year 2012/2013.
F	141 - 150	£135	£135				
G	151 - 165	£170	£170				
H	166 - 175	£275	£195				
I	176 - 185	£325	£215				
J	186 - 200	£460	£250				
K	201 - 225	£600	£270				
L	226 - 255	£815	£460				
M	Over 255	£1,030	£475				

## ŠKODA GreenLine II Technology

A combination of innovative technology and practical design features ensure that the Octavia GreenLine II is highly efficient and environmentally friendly. Below is an explanation of the technology present in the Octavia GreenLine II and how it works to keep fuel costs down and environmental impact low.



**1.6 TDI CR 105PS DPF.** The economical four cylinder 1.6 TDI diesel engine in the GreenLine II produces just 99 g/km CO<sub>2</sub> for hatch and 109g/km CO<sub>2</sub> for estate, which means road tax for both models, is free for the first 12 months.

The Octavia GreenLine II has an outstanding combined fuel economy of 74.3 mpg, the Estate 67.3 mpg. Reducing fuel costs for the driver and our impact on the environment.



**Low rolling resistance tyres.** The Octavia GreenLine II has 15" Pyxis alloys (6J x 15" 195/65 R15 91H) these lighter alloy wheels with low rolling resistance tyres have a higher prescribed air pressure to reduce friction.



**Energy Recovery.** Energy recovery is the process of converting kinetic energy (energy created through movement) back into usable electricity, which is either stored in the battery, or immediately used again by electrical components on the vehicle.

Depending on driving style, electrical energy is supplied to the vehicle by the alternator or directly by the battery. The principle of energy recovery is to reduce the load on the engine and therefore contribute to lower emissions and reduced fuel consumption.



**Stop/start System.** This innovative system turns off the engine when it is not needed, for example when the driver is stopped at traffic lights or in heavy traffic.

When a normal car is stationary, the engine will idle, which in turn consumes fuel and generates emissions. The Stop/start system cleverly cuts out this unnecessary work by stopping the engine automatically when the car is stationary, in neutral and the clutch pedal is released.

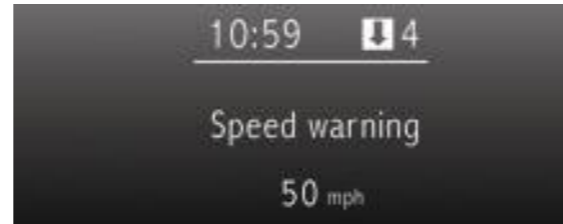
The Stop/start system does not inhibit a quick getaway either. As soon as the driver presses the clutch to put the vehicle in gear, the engine immediately starts up so acceleration is as instant as if the car had been idling.



**Aerodynamics.** One of the simplest ways to improve fuel efficiency and reduce emissions, is to create a more aero-dynamic vehicle.

To keep the weight and drag of the GreenLine II models down to a minimum and thus ensure the model is as efficient as possible, there is a reduced list of options available.

However, the comfort and safety of all occupants has not been compromised and so important features like airbags and air conditioning have been retained.



**Gear recommendations.** The recommended gear feature on the trip computer or Maxi-dot display shows the driver whether the gear they are in is appropriate or whether they need to change up or down.

The aim is to help the driver achieve optimum engine speed and reduce fuel consumption.

## The ŠKODA Octavia GreenLine II

Hatchback	CO <sub>2</sub> (g/km)	VED Band**	Insurance Group (50)	Recommended Basic	VAT	RRP	Recommended OTR*	Business user information	
								BiK 2012/13	P11D Value
1.6 TDI CR 105PS DPF	99	A	15E	£14,508.33	£2,901.67	£17,410.00	£17,975.00	13%	£17,920.00
Estate									
1.6 TDI CR 105PS DPF	107	B	15E	£15,616.67	£3,123.33	£18,740.00	£19,305.00	15%	£19,250.00

### Standard Equipment

15" 'Pyxis' alloys with anti-theft locking wheel bolts (6.5J x 15" 195/65 R15 91H - low rolling resistance tyres)  
2 interior lights  
4 spoke leather steering wheel  
4 loudspeakers  
ESC incl ABS, EBV, MSR, ASR, EDS, HBA and DSR  
Aero windscreen wipers with intermittent function  
Body coloured bumpers  
Body coloured door mirrors and door handles  
Body coloured protective side mouldings

Chrome finished inner door handles  
Cruise control  
Driver and passenger front and side airbags  
Electric front windows  
Electrically adjustable and heated door mirrors  
Electro-mechanical power steering  
Energy recovery  
Gear change recommendation  
GreenLine logo on boot  
Halogen projector headlights with DE-module  
Height adjustable driver seat  
Height adjustable front and rear head restraints (three)

Height and reach adjustable steering wheel  
High level third rear brake light  
Illuminated glove box  
Illuminated luggage compartment  
Immobiliser  
Indicators integrated into the door mirrors  
Interior light with door pillar switches  
Internally adjustable headlight beam level  
Lashing eyelets in the luggage compartment  
Manual air conditioning  
Maxi-dot trip computer

Outdoor temperature gauge  
Passenger airbag de-activation switch  
Passenger and driver vanity mirror  
Remote central locking (SAFE system)  
Split folding rear seats  
Stop/start system  
Tinted glass  
Touchscreen 'Bolero' radio - 2 DIN with integrated 6 CD changer (can play MP3 recordings)  
Two ISOFIX child seat fittings in rear compartment  
Tyre repair kit (no spare wheel)

**Estate only**  
Alarm system with interior monitoring and backup horn  
Black roof rails  
Rear window wiper  
Split folding rear seats with armrest and storage box  
Net in luggage compartment

For offers visit [www.skoda.co.uk/offers](http://www.skoda.co.uk/offers)

Band	CO <sub>2</sub> (g/km)	First 12 Months <sup>1</sup>	Standard VED <sup>2</sup>
A	Up to 100	£0	£0
B	101 - 110	£0	£20
C	111 - 120	£0	£30
D	121 - 130	£0	£100
E	131 - 140	£120	£120
F	141 - 150	£135	£135
G	151 - 165	£170	£170
H	166 - 175	£275	£195
I	176 - 185	£325	£215
J	186 - 200	£460	£250
K	201 - 225	£600	£270
L	226 - 255	£815	£460
M	Over 255	£1,030	£475

### OTR (Recommended On The Road)

\* Recommended 'On the Road' prices include delivery, 12 months Road Fund Licence, DVLA First registration Fee (at £55), and apply to the United Kingdom only.

### VED (Vehicle Excise Duty)

\*\* All vehicles will be subject to Vehicle Excise Duty based on the fuel type of the vehicle and its carbon dioxide (CO<sub>2</sub>) emissions level, measured in grams per kilometre (g/km). Due to changes in vehicle emissions data, CO<sub>2</sub> figures may differ on these vehicles if taken from current ŠKODA UK stock. The VED bands are shown in the table opposite.

<sup>1</sup> First year vehicle licence rates for petrol and diesel cars purchased on or after 1st April 2012. First year rate or 'showroom tax' applies to new car purchases only.

<sup>2</sup> Rate reverts to the Government's applicable Standard VED rate in subsequent years.

Please confirm figures with your ŠKODA retailer. Edition: UK 1st April 2012. VAT is calculated at 20%. For fuel consumption data, please refer to page 26.

Company car tax is based on your cars carbon dioxide emissions. The higher the car's emissions, the higher its tax liability. When a company car is made available for private use a 'Benefit in Kind' value is calculated for tax purposes.

To help you work out your tax liability please refer to page 34.

### P11D (Expenses and Benefits)

The P11D value is calculated by taking the On The Road (OTR) price for the vehicle, less the Road Fund Licence (RFL) and First Registration Fee (FRF).

BiK (Benefit in Kind)  
The BiK percentage value is based on the CO<sub>2</sub> emissions of the vehicle for the current tax year 2012/2013.

## The ŠKODA Octavia SE Connect

Hatchback	CO <sub>2</sub> (g/km)	VED Band**	Insurance Group (50)	Recommended Basic	VAT	RRP	Recommended OTR*	Business user information	
								BiK 2012/13	P11D Value
1.6 TDI CR 105PS DPF	119	C	TBC	£15,070.83	£3,014.17	£18,085.00	£18,650.00	17%	£18,595.00

Estate	CO <sub>2</sub> (g/km)	VED Band**	Insurance Group (50)	Recommended Basic	VAT	RRP	Recommended OTR*	Business user information	
								BiK 2012/13	P11D Value
1.6 TDI CR 105PS DPF	119	C	TBC	£15,937.50	£3,187.50	£19,125.00	£19,690.00	17%	£19,635.00

### Standard Equipment (over SE)

16" 'Crateris' alloy wheels (6.5J x 16" 205/55 R16 91V)  
Acoustic rear parking sensors  
Maxi-dot trip computer  
MDI (Mobile device interface)  
Metallic paint (Brilliant Silver or Steel Grey)  
Telephone preparation including Bluetooth® GSM II



For offers visit [www.skoda.co.uk/offers](http://www.skoda.co.uk/offers)

SE Connect is a limited edition model. Some cars will be built with a full size, temporary steel spare wheel as a chargeable option (see page 20 for price and further details). Other options are not available. Temporary steel wheels and 'Space saver' spare wheels are restricted to 50mph. For further details please check page 20.

Band	CO <sub>2</sub> (g/km)	First 12 Months	Standard VED <sup>2</sup>
A	Up to 100	£0	£0
B	101 - 110	£0	£20
C	111 - 120	£0	£30
D	121 - 130	£0	£100
E	131 - 140	£120	£120
F	141 - 150	£135	£135
G	151 - 165	£170	£170
H	166 - 175	£275	£195
I	176 - 185	£325	£215
J	186 - 200	£460	£250
K	201 - 225	£600	£270
L	226 - 255	£815	£460
M	Over 255	£1,030	£475

**OTR (Recommended On The Road)**  
\* Recommended 'On the Road' prices include delivery, 12 months Road Fund Licence, DVLA First registration Fee (at £55), and apply to the United Kingdom only.

**VED (Vehicle Excise Duty)**  
\*\* All vehicles will be subject to Vehicle Excise Duty based on the fuel type of the vehicle and its carbon dioxide (CO<sub>2</sub>) emissions level, measured in grams per kilometre (g/km). Due to changes in vehicle emissions data, CO<sub>2</sub> figures may differ on these vehicles if taken from current ŠKODA UK stock. The VED bands are shown in the table opposite.

<sup>1</sup>First year vehicle licence rates for petrol and diesel cars purchased on or after 1st April 2012. First year rate or 'showroom tax' applies to new car purchases only.

<sup>2</sup>Rate reverts to the Government's applicable Standard VED rate in subsequent years.

Please confirm figures with your ŠKODA retailer. Edition: UK 1st April 2012. VAT is calculated at 20%. For fuel consumption data, please refer to page 26.

Company car tax is based on your cars carbon dioxide emissions. The higher the car's emissions, the higher its tax liability. When a company car is made available for private use a 'Benefit in Kind' value is calculated for tax purposes.

To help you work out your tax liability please refer to page 34.

### P11D (Expenses and Benefits)

The P11D value is calculated by taking the On The Road (OTR) price for the vehicle, less the Road Fund Licence (RFL) and First Registration Fee (FRF).

BIK (Benefit in Kind)  
The BIK percentage value is based on the CO<sub>2</sub> emissions of the vehicle for the current tax year 2012/2013.

## The ŠKODA Octavia SE Plus

Hatchback	CO <sub>2</sub> (g/km)	VED Band**	Insurance Group (50)	Recommended Basic	VAT	RRP	Recommended OTR*	Business user information	
								BiK 2012/13	P11D Value
1.4 TSI 122PS	148	F	16E	£13,283.33	£2,656.67	£15,940.00	£16,640.00	20%	£16,450.00
1.4 TSI 122PS DSG	147	F	16E	£14,250.00	£2,850.00	£17,100.00	£17,800.00	20%	£17,610.00
1.8 TSI 152PS *	158	G	20E	£13,741.67	£2,748.33	£16,490.00	£17,225.00	22%	£17,000.00
1.6 TDI CR 105PS DPF	119	C	15E	£14,920.83	£2,984.17	£17,905.00	£18,470.00	17%	£18,415.00
1.6 TDI CR 105PS DSG DPF	123	D	15E	£15,887.50	£3,177.50	£19,065.00	£19,630.00	18%	£19,575.00
2.0 TDI CR 110PS DPF *	126	D	17E	£15,350.00	£3,070.00	£18,420.00	£18,985.00	19%	£18,930.00
2.0 TDI CR 140PS DPF	126	D	21E	£15,954.17	£3,190.83	£19,145.00	£19,710.00	19%	£19,655.00

### Estate

Hatchback	CO <sub>2</sub> (g/km)	VED Band**	Insurance Group (50)	Recommended Basic	VAT	RRP	Recommended OTR*	Business user information	
								BiK 2012/13	P11D Value
1.4 TSI 122PS	148	F	16E	£14,200.00	£2,840.00	£17,040.00	£17,740.00	20%	£17,550.00
1.4 TSI 122PS DSG	147	F	16E	£15,166.67	£3,033.33	£18,200.00	£18,900.00	20%	£18,710.00
1.8 TSI 152PS *	158	G	20E	£14,658.33	£2,931.67	£17,590.00	£18,325.00	22%	£18,100.00
1.6 TDI CR 105PS DPF	119	C	15E	£15,837.50	£3,167.50	£19,005.00	£19,570.00	17%	£19,515.00
1.6 TDI CR 105PS DSG DPF	123	D	15E	£16,804.17	£3,360.83	£20,165.00	£20,730.00	18%	£20,675.00
2.0 TDI CR 110PS DPF *	129	D	17E	£16,266.67	£3,253.33	£19,520.00	£20,085.00	19%	£20,030.00
2.0 TDI CR 140PS DPF	129	D	21E	£16,870.83	£3,374.17	£20,245.00	£20,810.00	19%	£20,755.00

\* Stock vehicles only please consult your retailer.

### Standard Equipment (over SE)

16" 'Proxima' alloy wheels (6.5J x 16" 205/55 R16 91V)  
4 spoke multi-function steering wheel for radio and telephone  
Acoustic rear parking sensors

'Amundsen' satellite navigation system †  
Isofix on front passenger seat  
Kristal upholstery  
Maxi-dot trip computer  
Multi device interface (MDI) and cable  
Net below parcel shelf (Hatch only)  
Net programme in boot

Telephone preparation including Bluetooth® GSM II  
Textile floor mats

For offers visit [www.skoda.co.uk/offers](http://www.skoda.co.uk/offers)

† 'Amundsen' sat nav removes the 6CD autochanger

With the standard 'Proxima' wheels it is possible to order a full size, temporary steel wheel as an option. Temporary spare steel wheels are restricted to 50mph. For further details please check page 20.

**Estate only**  
Sunset glass from B-pillar back



## The ŠKODA Octavia Elegance

Hatchback	CO <sub>2</sub> (g/km)	VED Band**	Insurance Group (50)	Recommended Basic	VAT	RRP	Recommended OTR*	Business user information	
								BiK 2012/13	P11D Value
1.4 TSI 122PS	148	F	16E	£13,400.00	£2,680.00	£16,080.00	£16,780.00	20%	£16,590.00
1.4 TSI 122PS DSG	147	F	16E	£14,366.67	£2,873.33	£17,240.00	£17,940.00	20%	£17,750.00
1.8 TSI 160PS ♦	158	G	22E	£14,641.67	£2,928.33	£17,570.00	£18,305.00	22%	£18,080.00
1.8 TSI 160PS DSG ♦	155	G	22E	£15,608.33	£3,121.67	£18,730.00	£19,465.00	22%	£19,240.00
1.6 TDI CR 105PS DPF	119	C	15E	£15,037.50	£3,007.50	£18,045.00	£18,610.00	17%	£18,555.00
1.6 TDI CR 105PS DSG DPF	123	D	15E	£16,004.17	£3,200.83	£19,205.00	£19,770.00	18%	£19,715.00
2.0 TDI CR 140PS DPF	126	D	20E	£16,070.83	£3,214.17	£19,285.00	£19,850.00	19%	£19,795.00
2.0 TDI CR 140PS DSG DPF	138	E	20E	£17,037.50	£3,407.50	£20,445.00	£21,130.00	21%	£20,955.00

Estate	CO <sub>2</sub> (g/km)	VED Band**	Insurance Group (50)	Recommended Basic	VAT	RRP	Recommended OTR*	Business user information	
								BiK 2012/13	P11D Value
1.4 TSI 122PS	148	F	16E	£14,266.67	£2,853.33	£17,120.00	£17,820.00	20%	£17,630.00
1.4 TSI 122PS DSG	147	F	16E	£15,233.33	£3,046.67	£18,280.00	£18,980.00	20%	£18,790.00
1.8 TSI 160PS ♦	158	G	22E	£15,508.33	£3,101.67	£18,610.00	£19,345.00	22%	£19,120.00
1.8 TSI 160PS DSG ♦	155	G	22E	£16,475.00	£3,295.00	£19,770.00	£20,505.00	22%	£20,280.00
1.6 TDI CR 105PS DPF	119	C	15E	£15,904.17	£3,180.83	£19,085.00	£19,650.00	17%	£19,595.00
1.6 TDI CR 105PS DSG DPF	123	D	15E	£16,870.83	£3,374.17	£20,245.00	£20,810.00	18%	£20,755.00
2.0 TDI CR 140PS DPF	129	D	20E	£16,937.50	£3,387.50	£20,325.00	£20,890.00	19%	£20,835.00
2.0 TDI CR 140PS DSG DPF	143	F	20E	£17,904.17	£3,580.83	£21,485.00	£22,185.00	22%	£21,995.00

♦ Stock vehicles only please consult your retailer.

Standard Equipment (over SE)				
16" 'Crateris' alloys (6.5J x 16" 205/55 R16 91V)	Air conditioned glove box	Front armrest with Jumbo box (air-conditioned storage compartment with an adjustable armrest between the front seats and 3.5mm aux. socket for MP3 players etc.)	Glasses storage compartment	<b>Estate only</b>
4 spoke leather steering wheel, gearknob and gaiter	Auto dimming rear view mirror with rain sensor	Integrated front headlight washers	Net in luggage compartment	Variable boot floor
Acoustic rear parking sensors	Cruise control	Rear seat split and folding with armrest and storage box		
	Dual-zone air conditioning	Front fog lights		

For offers visit [www.skoda.co.uk/offers](http://www.skoda.co.uk/offers)

With the standard 'Crateris' wheels it is possible to order a full size, temporary steel wheel as an option. When ordering the optional 17" 'Pallas' alloy wheels, only a temporary 'Space saver' option is then available. Temporary steel wheels and 'Space saver' spare wheels are restricted to 50mph. For further details please check page 20.

## The ŠKODA Octavia 4x4

Estate	CO <sub>2</sub> (g/km)	VED Band**	Insurance Group (50)	Recommended Basic	VAT	RRP	Recommended OTR*	Business user information	
								BiK 2012/13	P11D Value
1.8 TSI 160PS 4x4 ♦	180	I	21E	£16,016.67	£3,203.33	£19,220.00	£20,110.00	27%	£19,730.00
1.6 TDI CR 105PS 4x4 ♦	141	F	15E	£16,416.67	£3,283.33	£19,700.00	£20,400.00	22%	£20,210.00
2.0 TDI CR 140PS 4x4 DPF ♦	148	F	20E	£17,450.00	£3,490.00	£20,940.00	£21,640.00	23%	£21,450.00
2.0 TDI CR 140PS DSG 4x4 DPF ♦	156	G	tbc	£18,416.67	£3,683.33	£22,100.00	£22,835.00	25%	£22,610.00

♦ Stock vehicles only please consult your retailer.

Standard Equipment (over SE)	
15" 'Pyxis' alloys (6.5J x 15" 205/60 R15 V)	Front armrest Jumbo box (air-conditioned storage compartment with an adjustable armrest between the front seats and 3.5mm aux. socket for MP3 players etc.)
4 spoke leather steering wheel, gearknob and gaiter	Automatically dimming rear view mirror with rain sensor
Dual-zone air conditioning	ESC incl. ABS, EBV, MSR, ASR, EDS, HBA and DSR
Four wheel drive	Front fog lights
	Integrated front headlight washers
	Raised suspension
	Roof rails, black
	Under body protection

For offers visit [www.skoda.co.uk/offers](http://www.skoda.co.uk/offers)

With the standard 'Pyxis' steel wheels it is only possible to order a temporary 'Space saver' as an option. It is possible with the optional 16" 'Draconis' alloy wheels to order a full size, temporary steel wheel spare as an option. Temporary steel wheels and 'Space saver' spare wheels are restricted to 50mph. For further details please check page 20.

Band	CO <sub>2</sub> (g/km)	First 12 Months <sup>1</sup>	Standard VED <sup>2</sup>	OTR (Recommended On The Road)	<sup>1</sup> First year vehicle licence rates for petrol and diesel cars purchased on or after 1st April 2012. First year rate or 'showroom tax' applies to new car purchases only.	Company car tax is based on your cars carbon dioxide emissions. The higher the car's emissions, the higher its tax liability. When a company car is made available for private use a 'Benefit in Kind' value is calculated for tax purposes.	P11D (Expenses and Benefits)
A	Up to 100	£0	£0	* Recommended 'On the Road' prices include delivery, 12 months Road Fund Licence, DVLA First registration Fee (at £55), and apply to the United Kingdom only.			
B	101 - 110	£0	£20				
C	111 - 120	£0	£30				
D	121 - 130	£0	£100				
E	131 - 140	£120	£120				
F	141 - 150	£135	£135				
G	151 - 165	£170	£170				
H	166 - 175	£275	£195				
I	176 - 185	£325	£215				
J	186 - 200	£460	£250				
K	201 - 225	£600	£270				
L	226 - 255	£815	£460				
M	Over 255	£1,030	£475				

**VED (Vehicle Excise Duty)**  
 \*\* All vehicles will be subject to Vehicle Excise Duty based on the fuel type of the vehicle and its carbon dioxide (CO<sub>2</sub>) emissions level, measured in grams per kilometre (g/km). Due to changes in vehicle emissions data, CO<sub>2</sub> figures may differ on these vehicles if taken from current ŠKODA UK stock. The VED bands are shown in the table opposite.

Please confirm figures with your ŠKODA retailer. Edition: UK 1st April 2012. VAT is calculated at 20%. For fuel consumption data, please refer to page 26.

To help you work out your tax liability please refer to page 34.

**P11D (Expenses and Benefits)**  
 The P11D value is calculated by taking the On The Road (OTR) price for the vehicle, less the Road Fund Licence (RFL) and First Registration Fee (FRF).  
 BIK (Benefit in Kind)  
 The BIK percentage value is based on the CO<sub>2</sub> emissions of the vehicle for the current tax year 2012/2013.

## The ŠKODA Octavia Scout

Estate	CO <sub>2</sub> (g/km)	VED Band**	Insurance Group (50)	Recommended Basic	VAT	RRP	Recommended OTR*	Business user information	
								BiK 2012/13	P11D Value
1.8 TSI 160PS 4x4 ♦	182	I	20E	£16,975.00	£3,395.00	£20,370.00	£21,260.00	27%	£20,880.00
2.0 TDI CR 140PS 4x4 DPF ♦	155	G	20E	£18,408.33	£3,681.67	£22,090.00	£22,825.00	25%	£22,600.00
2.0 TDI CR 140PS DSG 4x4 DPF ♦	162	G	tbc	£19,375.00	£3,875.00	£23,250.00	£23,985.00	26%	£23,760.00

♦ Stock vehicles only please consult your retailer.

### Standard Equipment (over 4x4)

17" 'Proteus' alloys (7) x 17" 225/50 R17 94W)	Light Assistant (coming home, leaving home and tunnel light)
Acoustic rear parking sensors	Net programme in boot
Aluminium design undertrays front and rear	Stainless steel pedal set
Chrome kick plates	Sunset privacy glass (from B pillar back)
Cruise control	Scout style bumpers
Glasses storage	Textile floor mats
Higher ground clearance (17mm over 4x4)	Twin polished stainless steel tailpipes
Hill hold control (additional to ESC - Electronic Stability Control)	

For offers visit [www.skoda.co.uk/offers](http://www.skoda.co.uk/offers)

Only a temporary 'Space saver' spare wheel can be ordered with the 'Proteus' alloy wheels.  
Temporary 'Space saver' spare wheels are restricted to 50mph. For further details please check  
page 20.



## The ŠKODA Octavia Laurin & Klement



Hatchback	CO <sub>2</sub> (g/km)	VED Band**	Insurance Group (50)	Recommended Basic	VAT	RRP	Recommended OTR*	Business user information	
								BiK 2012/13	P11D Value
1.8 TSI 160PS ♦	158	G	22E	£17,116.67	£3,423.33	£20,540.00	£21,275.00	22%	£21,050.00
1.8 TSI 160PS DSG ♦	155	G	22E	£18,083.33	£3,616.67	£21,700.00	£22,435.00	22%	£22,210.00
2.0 TDI CR 140PS DPF ♦	126	D	20E	£18,545.83	£3,709.17	£22,255.00	£22,820.00	19%	£22,765.00
2.0 TDI CR 140PS DSG DPF ♦	138	E	20E	£19,512.50	£3,902.50	£23,415.00	£24,100.00	21%	£23,925.00

### Estate

1.8 TSI 160PS ♦	158	G	22E	£17,983.33	£3,596.67	£21,580.00	£22,315.00	22%	£22,090.00
1.8 TSI 160PS DSG ♦	155	G	22E	£18,950.00	£3,790.00	£22,740.00	£23,475.00	22%	£23,250.00
2.0 TDI CR 140PS DPF ♦	129	D	20E	£19,412.50	£3,882.50	£23,295.00	£23,860.00	19%	£23,805.00
2.0 TDI CR 140PS DSG DPF ♦	143	F	20E	£20,379.17	£4,075.83	£24,455.00	£25,155.00	22%	£24,965.00

♦ Stock vehicles only please consult your retailer.

### Standard Equipment (over Elegance)

17" 'Cepeus' alloys (7) x 17" 225/45 R17 91W)	Electrically adjustable, heated and foldable door mirrors with memory function	'Laurin & Klement' kickplates	Piano varnish décor
4 spoke multi-function steering wheel for radio	ESC incl. ABS, EBV, MSR, ASR, EDS, HBA and DSR	Leather upholstery (contains some artificial leather)	Polished stainless steel exhaust pipes
Curtain airbags	Heated front seats	Light Assistant (coming home, leaving home and tunnel light)	Rear mechanical sunscreen (Hatch only)
Electrically adjustable driver's seat with memory function and lumbar support	Hill hold control	Maxi-dot trip computer	Textile floor mats
	Illuminated interior door handles	Metallic paint	Xenon headlights with AFS II (Adaptive Front-light System)
		Net programme in boot	

For offers visit [www.skoda.co.uk/offers](http://www.skoda.co.uk/offers)

Only a temporary 'Space saver' spare wheel can be ordered with 'Cepeus' alloy wheels as an option.  
Temporary 'Space saver' spare wheels are restricted to 50mph. For further details please check page 20.

Band	CO <sub>2</sub> (g/km)	First 12 Months <sup>1</sup>	Standard VED <sup>2</sup>
A	Up to 100	£0	£0
B	101 - 110	£0	£20
C	111 - 120	£0	£30
D	121 - 130	£0	£100
E	131 - 140	£120	£120
F	141 - 150	£135	£135
G	151 - 165	£170	£170
H	166 - 175	£275	£195
I	176 - 185	£325	£215
J	186 - 200	£460	£250
K	201 - 225	£600	£270
L	226 - 255	£815	£460
M	Over 255	£1,030	£475

### OTR (Recommended On The Road)

\* Recommended 'On the Road' prices include delivery, 12 months Road Fund Licence, DVLA First registration Fee (at £55), and apply to the United Kingdom only.

### VED (Vehicle Excise Duty)

\*\* All vehicles will be subject to Vehicle Excise Duty based on the fuel type of the vehicle and its carbon dioxide (CO<sub>2</sub>) emissions level, measured in grams per kilometre (g/km). Due to changes in vehicle emissions data, CO<sub>2</sub> figures may differ on these vehicles if taken from current ŠKODA UK stock. The VED bands are shown in the table opposite.

<sup>1</sup> First year vehicle licence rates for petrol and diesel cars purchased on or after 1st April 2012. First year rate or 'showroom tax' applies to new car purchases only.

<sup>2</sup> Rate reverts to the Government's applicable Standard VED rate in subsequent years.

Please confirm figures with your ŠKODA retailer. Edition: UK 1st April 2012. VAT is calculated at 20%. For fuel consumption data, please refer to page 26.

Company car tax is based on your cars carbon dioxide emissions. The higher the car's emissions, the higher its tax liability. When a company car is made available for private use a 'Benefit in Kind' value is calculated for tax purposes.

To help you work out your tax liability please refer to page 34.

### P11D (Expenses and Benefits)

The P11D value is calculated by taking the On The Road (OTR) price for the vehicle, less the Road Fund Licence (RFL) and First Registration Fee (FRF).

BiK (Benefit in Kind)  
The BiK percentage value is based on the CO<sub>2</sub> emissions of the vehicle for the current tax year 2012/2013.



## The ŠKODA Octavia vRS

Hatchback	CO <sub>2</sub> (g/km)	VED Band**	Insurance Group (50)	Recommended Basic	VAT	RRP	Recommended OTR*	Business user information	
								BiK 2012/13	P11D Value
2.0 TFSI 200PS	175	H	30E	£16,333.33	£3,266.67	£19,600.00	£20,440.00	26%	£20,110.00
2.0 TFSI 200PS DSG	180	I	30E	£17,300.00	£3,460.00	£20,760.00	£21,650.00	27%	£21,270.00
2.0 TDI CR 170PS DPF	149	F	28E	£17,133.33	£3,426.67	£20,560.00	£21,260.00	23%	£21,070.00
2.0 TDI CR 170PS DSG DPF	159	G	28E	£18,100.00	£3,620.00	£21,720.00	£22,455.00	25%	£22,230.00

Estate	CO <sub>2</sub> (g/km)	VED Band**	Insurance Group (50)	Recommended Basic	VAT	RRP	Recommended OTR*	Business user information	
								BiK 2012/13	P11D Value
2.0 TFSI 200PS	175	H	30E	£17,200.00	£3,440.00	£20,640.00	£21,480.00	26%	£21,150.00
2.0 TFSI 200PS DSG	180	I	30E	£18,166.67	£3,633.33	£21,800.00	£22,690.00	27%	£22,310.00
2.0 TDI CR 170PS DPF †	149	F	28E	£18,000.00	£3,600.00	£21,600.00	£22,300.00	23%	£22,110.00
2.0 TDI CR 170PS DSG DPF †	159	G	28E	£18,966.67	£3,793.33	£22,760.00	£23,495.00	25%	£23,270.00

### Standard Equipment (over S)

18" 'Neptune' alloys (7.5J x 18" 225/40 R18 92Y)	Lowered suspension
Additional 4 loudspeakers	Maxi-dot trip computer (DSG only)
Alarm system with interior monitoring and backup horn	Rear boot spoiler (Hatch only)
Body coloured door mirrors, handles and protective side mouldings	Rear electric windows (with child safety system)
Carbon look fascia inserts	Rear seats, split and folding with rear armrest and storage box
Chrome finished inner door handles	Red brake callipers
Cruise control	Remote central locking (SAFE)
Daylight running lights with LED lamps	Storage box under passenger seat
Dual zone air conditioning	Tinted glass
ESC incl. ABS, EBV, MSR, ASR, EDS, HBA and DSR	TPM (Tyre Pressure Monitor)
Floor mats	Trip computer
Front fog lights	Twin chrome exhaust
Height adjustable driver and passenger seats with lumbar support	Tyre repair kit (no spare wheel)
Illuminated glove box (with air-conditioning)	Touchscreen 'Bolero' radio - 2 DIN with integrated 6 CD changer (can play MP3 recordings)
Jumbo box (air conditioned storage compartment with an adjustable armrest between the front seats and 3.5mm aux. socket for MP3 players etc.)	'vRS' 3 spoke leather sports steering wheel (multi-function controls for radio and paddle shift - DSG only)
Leather handbrake, gearknob and gaiter	'vRS' design bumpers
	'vRS' design sports seats
	'vRS' kickplates
	XDS advance stability control (see page 34 for full description)

For offers visit [www.skoda.co.uk/offers](http://www.skoda.co.uk/offers)

† 2.0 TDI 170PS manual & DSG does not feature gear change recommendation.

**Note: No mudflaps available with vRS.**

16



Only a temporary 'Space saver' spare wheel can be ordered with 'Neptune' alloy wheels as an option. Temporary 'Space saver' spare wheels are restricted to 50mph. For further details please check page 20.

## The ŠKODA Octavia vRS Blackline

Hatchback	CO <sub>2</sub> (g/km)	VED Band**	Insurance Group (50)	Recommended Basic	VAT	RRP	Recommended OTR*	Business user information	
								BiK 2012/13	P11D Value
2.0 TDI CR 170PS DPF	149	F	TBC	£17,133.33	£3,426.67	£20,560.00	£21,260.00	23%	£21,070.00
2.0 TDI CR 170PS DSG DPF	159	G	TBC	£18,100.00	£3,620.00	£21,720.00	£22,455.00	25%	£22,230.00

Estate	CO <sub>2</sub> (g/km)	VED Band**	Insurance Group (50)	Recommended Basic	VAT	RRP	Recommended OTR*	Business user information	
								BiK 2012/13	P11D Value
2.0 TDI CR 170PS DPF †	149	F	TBC	£18,000.00	£3,600.00	£21,600.00	£22,300.00	23%	£22,110.00
2.0 TDI CR 170PS DSG DPF †	159	G	TBC	£18,966.67	£3,793.33	£22,760.00	£23,495.00	25%	£23,270.00

### Standard Equipment (over vRS)

18" Black 'Neptune' alloys (7.5J x 18" 225/40 R18 92Y)
Acoustic rear parking sensors
Amundsen satellite navigation
DAB
vRS leather upholstery (contains artificial leather)

For offers visit [www.skoda.co.uk/offers](http://www.skoda.co.uk/offers)

† 2.0 TDI 170PS manual & DSG does not feature gear change recommendation.

**Note: No mudflaps available with vRS.**

vRS Blackline is available in the following paint colours: Candy White, Black Magic pearl effect and Race Blue metallic. Pearl effect and metallic paints are chargeable options. No other options are available.



Band	CO <sub>2</sub> (g/km)	First 12 Months <sup>1</sup>	Standard VED <sup>2</sup>
A	Up to 100	£0	£0
B	101 - 110	£0	£20
C	111 - 120	£0	£30
D	121 - 130	£0	£100
E	131 - 140	£120	£120
F	141 - 150	£135	£135
G	151 - 165	£170	£170
H	166 - 175	£275	£195
I	176 - 185	£325	£215
J	186 - 200	£460	£250
K	201 - 225	£600	£270
L	226 - 255	£815	£460
M	Over 255	£1,030	£475

### OTR (Recommended On The Road)

\* Recommended 'On the Road' prices include delivery, 12 months Road Fund Licence, DVLA First registration Fee (at £55), and apply to the United Kingdom only.

### VED (Vehicle Excise Duty)

\*\* All vehicles will be subject to Vehicle Excise Duty based on the fuel type of the vehicle and its carbon dioxide (CO<sub>2</sub>) emissions level, measured in grams per kilometre (g/km). Due to changes in vehicle emissions data, CO<sub>2</sub> figures may differ on these vehicles if taken from current ŠKODA UK stock. The VED bands are shown in the table opposite.

<sup>1</sup>First year vehicle licence rates for petrol and diesel cars purchased on or after 1st April 2012. First year rate or 'showroom tax' applies to new car purchases only.

<sup>2</sup>Rate reverts to the Government's applicable Standard VED rate in subsequent years.

Please confirm figures with your ŠKODA retailer. Edition: UK 1st April 2012. VAT is calculated at 20%. For fuel consumption data, please refer to page 26.

Company car tax is based on your car's carbon dioxide emissions. The higher the car's emissions, the higher its tax liability. When a company car is made available for private use a 'Benefit in Kind' value is calculated for tax purposes.

To help you work out your tax liability please refer to page 34.

### P11D (Expenses and Benefits)

The P11D value is calculated by taking the On The Road (OTR) price for the vehicle, less the Road Fund Licence (RFL) and First Registration Fee (FRF).

BiK (Benefit in Kind)  
The BiK percentage value is based on the CO<sub>2</sub> emissions of the vehicle for the current tax year 2012/2013.

## Factory Fitted Optional Equipment

Option	S		SE		GreenLine II		SE Plus		Elegance	
	Basic	RRP	Basic	RRP	Basic	RRP	Basic	RRP	Basic	RRP
3 spoke multi-function steering wheel with controls for radio, including Maxi Dot and paddles for DSG (DSG only)	-	-	-	-	-	-	-	-	£300.00	£360
- with controls for radio and telephone with Bluetooth® GSM III (UHV + rSAP) †††	-	-	-	-	-	-	-	-	£629.17	£755
4 spoke leather steering wheel including small leather package	-	-	£154.17	£185	-	-	-	-	std	std
- with controls for radio and Maxi Dot	-	-	£350.00	£420	-	-	-	-	£208.33	£250
- with controls for radio and telephone with Bluetooth® GSM III (UHV + rSAP) and Maxi Dot †††	-	-	£633.33	£760	£375.00	£450	std	std	£491.67	£590
'Alcantara' upholstery (inc. heated front seats)	-	-	-	-	-	-	-	-	£1,262.50	£1,515
'Alcantara' vRS sports upholstery	-	-	-	-	-	-	-	-	-	-
Boot Net (standard on all Estates except S)	£33.33	£40	£33.33	£40	-	-	std	std	std	std
Electric sunroof	£600.00	£720	£600.00	£720	-	-	£600.00	£720	£600.00	£720
Floor mats	£62.50	£75	£62.50	£75	-	-	std	std	£62.50	£75
Full leather upholstery incl. heated front seats (contains some artificial leather)	-	-	-	-	-	-	-	-	£1,262.50	£1,515
Full leather black vRS upholstery (contains some artificial leather)	-	-	-	-	-	-	-	-	-	-
Smoking pack	£37.50	£45	£37.50	£45	£37.50	£45	£37.50	£45	£37.50	£45
Variable boot floor	-	-	£133.33	£160	-	-	£133.33	£160	£133.33	£160
									std on Estate	
Wood décor	-	-	-	-	-	-	-	-	£91.67	£110

### Hatch only

Rear seat split and folding	£141.67	£170	std	std	std	std	std	std	std	std
Rear sunblind and net under parcel shelf	£95.83	£115	£95.83	£115	-	-	£95.83	£115	£95.83	£115

### Estate only

Sunset glass	-	-	£191.67	£230	-	-	std	std	£191.67	£230
--------------	---	---	---------	------	---	---	-----	-----	---------	------

### Exterior

15" 'Pyxis' alloys with anti-theft locking wheel bolts (6.5J x 15" 195/65 R15V)	£337.50	£405	std	std	-	-	-	-	-	-
16" 'Crateris' alloys with anti-theft locking wheel bolts (6.5J x 16" 205/55 R16 91V)	-	-	£254.17	£305	-	-	£254.17	£305	std	std
16" 'Draconis' alloys (6.5J x 16" 205/55 R16 91V)	-	-	-	-	-	-	-	-	-	-
17" 'Pallas' alloys with anti-theft locking wheel bolts and sports suspension (7Jx17" 225/45 R17 91W)	-	-	£641.67	£770	-	-	£641.67	£770	£466.67	£560
17" 'Proteus' polished alloys (7J x 17" 225/50 R17 94W)	-	-	-	-	-	-	-	-	-	-
Metallic paint†† / Pearl effect paint†† / Sprint Yellow	£412.50	£495	£412.50	£495	£412.50	£495	£412.50	£495	£412.50	£495

### Estate only

Silver roof rails	-	-	£145.84	£175	£145.84	£175	£145.84	£175	£145.84	£175
-------------------	---	---	---------	------	---------	------	---------	------	---------	------

† Not available with 'Alcantara' upholstery

†† Race Blue metallic and Black Magic pearl effect paint are available on vRS Blackline

††† Please see your local retailer for full list of compatible phones for the Bluetooth® system.

- Unavailable on this trim

std Standard equipment on this trim

4x4		Scout		Laurin & Klement		vRS	
Basic	RRP	Basic	RRP	Basic	RRP	Basic	RRP
£300.00	£360	£300.00	£360	-	-	-	-
£629.17	£755	£629.17	£755	£470.83	£565	DSG only†	DSG only†
std	std	std	std	-	-	£333.33	£400
£208.33	£250	£208.33	£250	std	std	std	std
£491.67	£590	£491.67	£590	£337.50	£405	-	-
-	-	£1,262.51	£1,515	£0.00	Free	-	-
-	-	-	-	-	-	£83.33	£100.00
std	std	std	std	std	std	£33.33	£40
£600.00	£720	£600.00	£720	£600.00	£720	£600.00	£720
£62.50	£75	std	std	std	std	std	std
-	-	-	-	std	std	-	-
-	-	-	-	-	-	£716.67	£860
£37.50	£45	£37.50	£45	£37.50	£45	£37.50	£45
£133.34	£160	£133.34	£160	£133.33	£160	£133.33	£160
-	-	-	-	std on Estate	std on Estate	-	-

std	std	std	std	std	std	std	std
-	-	-	-	std	std	£95.83	£115

£191.67	£230	std	std	£191.67	£230	£191.67	£230
---------	------	-----	-----	---------	------	---------	------

-	-	-	-	-	-	-	-
---	---	---	---	---	---	---	---

-	-	-	-	-	-	-	-
---	---	---	---	---	---	---	---

£254.17	£305	-	-	-	-	-	-
---------	------	---	---	---	---	---	---

-	-	-	-	-	-	-	-
---	---	---	---	---	---	---	---

-	-	£83.33	£100	-	-	-	-
---	---	--------	------	---	---	---	---

£412.50	£495	£412.50	£495	std	std	£412.50	£495
---------	------	---------	------	-----	-----	---------	------

-	-	-	-	-	-	-	-
---	---	---	---	---	---	---	---

£145.84	£175	£145.84	£175	£145.84	£175	£145.84	£175
---------	------	---------	------	---------	------	---------	------



Black 'vRS' leather seats



MDI (Mobile Device Interface)

## Factory Fitted Optional Equipment (continued)

Option	S		SE		GreenLine II		SE Plus		Elegance	
	Basic	RRP	Basic	RRP	Basic	RRP	Basic	RRP	Basic	RRP
Alarm with interior monitoring and backup horn with remote central locking	£241.67	£290	std	std	std Estate n/a Hatch	std Estate n/a Hatch	std	std	std	std
Alarm with towing protection	-	-	-	-	-	-	-	-	-	-
Curtain airbags	£258.33	£310	£258.33	£310	£258.33	£310	£258.33	£310	£258.33	£310
ESC incl. ABS, MBA, MSR, ASR, EDL, HBA (std on DSG)	£333.33	£400	£333.33	£400	std	std	£333.33	£400	£333.33	£400
Front fog lights	£166.67	£200	£166.67	£200	-	-	£166.67	£200	std	std
Full size spare steel wheel or temporary 'Space-saver' spare wheel***	£62.50	£75	£62.50	£75	-	-	£62.50	£75	£62.50	£75
TPM (Tyre Pressure Monitor)	£87.50	£105	£87.50	£105	£87.50	£105	£87.50	£105	£87.50	£105

Comfort & Convenience										
6 CD autochanger in boot*	£245.83	£295	£245.83	£295	std	std	£245.83	£295	£245.83	£295
'Columbus' Sat Nav System and navigation DVD with TMC (Manual) *††	-	-	£1,400.00	£1,680	£1,287.50	£1,545	-	-	£1,400.00	£1,680
'Columbus' Sat Nav System and navigation DVD with TMC (DSG) *††	-	-	£1,400.00	£1,680	n/a	n/a	-	-	£1,400.00	£1,680
Cruise control (excluding 1.4 16V)	£191.67	£230	£191.67	£230	std	std	£191.67	£230	std	std
Dual zone climate control air conditioning including Jumbo Box and 3.5mm aux. in	-	-	£404.17	£485	-	-	£404.17	£485	std	std
Electrically adjustable, heated and foldable door mirrors										
- with boarding spots	-	-	-	-	-	-	-	-	£162.50	£195
- with auto dimming and memory function and electrically adjustable drivers seat with memory function.	-	-	-	-	-	-	-	-	£504.17	£605
Heated front seats	-	-	£233.33	£280	-	-	£233.33	£280	£233.33	£280
Heated rear seats (where front heated std)	-	-	-	-	-	-	-	-	-	-
Independent heating for diesel engines**	-	-	-	-	-	-	-	-	£845.83	£1,015
Light assistant (coming home, leaving home and tunnel light)	-	-	-	-	-	-	-	-	£66.67	£80
- with rain sensor and auto dimming rear view mirror	-	-	£145.83	£175	£145.83	£175	£145.83	£175	std	std
- with LED daylight running lights***	-	-	-	-	-	-	-	-	-	-
Maxi-dot trip computer	-	-	£112.50	£135	std	std	std	std	£112.50	£135
MDI for iPod (Mobile Device Interface) - requires additional adapter, please see your retailer	-	-	£158.33	£190	-	-	std	std	£158.33	£190
Parking sensors										
- Rear only	-	-	£254.17	£305	£254.17	£305	std	std	std	std
- Front only (available where rear is standard)	-	-	-	-	-	-	-	-	£254.17	£305
- Front and rear	-	-	-	-	-	-	-	-	-	-
Towbar	-	-	£308.33	£370	-	-	£308.33	£370	£308.33	£370
Towbar preparation †	-	-	£129	£155	-	-	£129	£155	£129	£155
Xenon headlights and AFS II, with dynamic angle control and integrated front headlight washers	-	-	-	-	-	-	-	-	£546	£655

Extended warranty										
4 years / 80,000 miles †††	£212.50	£255	£212.50	£255	£212.50	£255	£212.50	£255	£212.50	£255
5 years / 100,000 miles †††	£437.50	£525	£437.50	£525	£437.50	£525	£437.50	£525	£437.50	£525

- Unavailable on this trim  
**std** Standard equipment on this trim

4x4		Scout		Laurin & Klement		vRS	
Basic	RRP	Basic	RRP	Basic	RRP	Basic	RRP
std	std	std	std	std	std	std	std
£54.17	£65	-	-	-	-	-	-
£258.34	£310	£258.34	£310	std	std	£258.33	£310
std	std	std	std	std	std	std	std
std	std	std	std	std	std	std	std
£62.50	£75	£62.50	£75	£62.50	£75	£62.50	£75
£87.50	£105	-	-	£87.50	£105	std	std

£245.84	£295	£245.84	£295	£245.83	£295	£245.83	£295
£1,400.00	£1,680	£1,400.00	£1,680	£1,287.50	£1,545	£1,400.00	£1,680
£1,400.00	£1,680	£1,400.00	£1,680	£1,287.50	£1,545	£1,287.50	£1,545
£191.67	£230	std	std	std	std	std	std
std	std	std	std	std	std	std	std
-	-	-	-	std	std	-	-
-	-	£504.17	£605	std	std	-	-
£233.34	£280	£233.34	£280	std	std	£233.33	£280
-	-	-	-	£162.50	£195	-	-
-	-	£845.83	£1,015	£845.83	£1,015	-	-
£66.67	£80	std	std	std	std	-	-
std	std	std	std	std	std	£145.83	£175
-	-	£129.17	£155	-	-	-	-
£112.50	£135	£112.50	£135	std	std	£112.50 std on DSG	£135 std on DSG
£158.34	£190	£158.34	£190	£158.33	£190	£158.33	£190
£254.17	£305	std	std	std	std	£254.17	£305
-	-	£254.17	£305	£254.17	£305	-	-
£475.00	£570	-	-	-	-	£475.00	£570
£308.34	£370	-	-	£308.33	£370	-	-
£129	£155	£129	£155	£129	£155	£129	£155
£546	£655	£546	£655	std	std	£633.33	£760

£212.50	£255	£212.50	£255	£212.50	£255	£212.50	£255
£437.50	£525	£437.50	£525	£437.50	£525	£437.50	£525



Cruise control



Maxi-dot trip computer



'Columbus' satellite navigation with voice control

- \* An integrated 6CD changer is standard on SE and above (excluding SE Plus). If the Columbus Sat Nav is ordered, the integrated functionality is removed, therefore you may wish to purchase the 6 CD Autochanger as an option.
- \*\* Independent heating allows the driver to begin heating up the car by remote control so frosty windows can clear without scraping.
- \*\*\* Daylight running lights remove the fog light function.
- † Factory fit tow bar will only support lights required for towing (ie brake, hazard and indicator). Caravan customers who need twin electrics (also known as split charging) should order the Retailer fit accessories Tow Bar and electrics.
- †† Note this system does not have the 6 CD front load system.
- ††† For terms and conditions please see page 35
- Available on SE Connect.



## The ŠKODA Octavia colours



1. Candy White



2. Pacific Blue



3. Corrida Red



4. Brilliant Silver metallic



5. Rosso Brunello metallic\*



6. Petrol Blue metallic



7. Black Magic Pearl Effect



8. Steel Grey metallic



9. Arctic Green metallic



10. Cappuccino metallic



11. Anthracite Grey metallic



12. Satin Grey metallic\*



13. Sprint Yellow\*



14. Race Blue metallic\*



15. Rallye Green metallic\*



16. Storm Blue metallic

\* Only available on vRS. \* Subject to availability, please consult your retailer.

Because of errors which may occur in the print, the colours illustrated here may differ from the actual finishes themselves. Your ŠKODA retailer will be pleased to advise you.

	1	2	3	4	5	6	7	8
	Candy White	Pacific Blue	Corrida Red	Brilliant Silver metallic	Rosso Brunello metallic	Petrol Blue Pearl Effect	Black Magic Pearl Effect	Steel Grey metallic
Octavia	•	•	•	•	•	•	•	•
Octavia SE Connect				•				•
Octavia vRS	•		•	•			•	•
Octavia vRS Blackline	•			•			•	•
Octavia Laurin & Klement	•			•			•	•
Octavia Scout	•	•	•	•	•	•	•	•
	9	10	11	12	13	14	15	16
	Arctic Green metallic	Cappuccino metallic	Anthracite Grey metallic	Satin Grey metallic	Sprint Yellow	Race Blue metallic	Rallye Green metallic	Storm Blue metallic
Octavia	•	•	•	•				•
Octavia vRS			•		•	•	•	•
Octavia vRS Blackline						•		
Octavia Laurin & Klement	•	•	•	•				•
Octavia Scout	•	•	•	•				•

## The ŠKODA Octavia trims & wheels

### S

Standard



Onyx Cloth



15" 'Avantgarda' steel wheels

Option



15" 'Pyxis' alloys

### SE

Standard



Onyx Cloth



Grey Cloth



15" 'Pyxis' alloys

Option



16" 'Crateris' alloys



17" 'Pallas' alloys (with sports suspension)

### SE Connect

Standard



Onyx Cloth



16" 'Crateris' alloys

### SE Plus

Standard



Onyx Cloth



16" 'Proxima' alloys

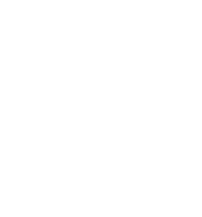


16" 'Crateris' alloys



17" 'Pallas' alloys (with sports suspension)

Option



17" 'Pallas' alloys (with sports suspension)

### GreenLine II

Standard



Onyx Cloth



Grey Cloth



15" 'Pyxis' alloys

### 4x4

Standard



Onyx Cloth



Grey Cloth



15" 'Pyxis' alloys

Option



16" 'Draconis' alloys

## The ŠKODA Octavia trims & wheels

### Elegance

Standard



Onyx Cloth



Ivory Cloth



16" 'Crateris' alloys

Option



Onyx Leather / Ivory Leather



Onyx 'Alcantara' / Ivory Alcantara



17" 'Pallas' alloys (with sports suspension)

Please note, all ivory interiors will come with black carpets and floor mats

### Scout

Standard



'Scout' onyx interior



17" 'Proteus' alloys

Option



'Alcantara' onyx interior



17" Polished 'Proteus' alloys

### Laurin & Klement

Standard



Light Leather



17" 'Cepeus' alloy wheels

Option



Onyx 'Alcantara'

### vRS

Standard



'vRS' interior



18" 'Neptune' alloys

Option



Black 'vRS' leather seats



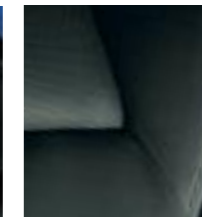
'Alcantara' 'vRS' sports seats with red stitching

### vRS Blackline

Standard

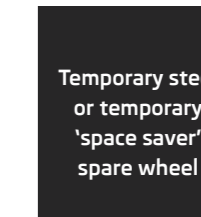


18" Black 'Neptune' alloys



Black 'vRS' leather seats

Option



Temporary steel or temporary 'space saver' spare wheel

Available on all models (except GreenLine II or vRS Blackline)

See page 18 for details

Pictures are for illustrative purposes only. Please visit your local retailer for further information.

# The ŠKODA Octavia Engine Specifications

Petrol Engines	1.4 16V 80PS	1.6 MPI 102PS	1.2 TSI 105PS	1.2 TSI 105PS DSG	1.4 TSI 122PS
Trim level	S	SE/Elegance	S/SE	S/SE	S/SE/SE Plus/Elegance
Type	4-cylinder in-line engine	4-cylinder in-line engine	4-cylinder in-line engine	4-cylinder in-line engine	4-cylinder in-line engine
Transverse-mounted	Yes	Yes	Yes	Yes	Yes
Fuel injection type	Multi point Fuel Injection	Multi point Fuel Injection	Direct Fuel Injection	Direct Fuel Injection	Direct Fuel Injection
Cubic capacity cc	1,390	1,595	1,197	1,197	1,390
Bore x stroke mm	76.5 x 75.6	81.0 x 77.4	71.0 x 75.6	71.0 x 75.6	76.5 x 75.6
Air pollution regulation	EU 5	EU 5	EU 5	EU 5	EU 5
Compression ratio	10.5:1	10.5:1	10:1	10:1	10.0:1

## Hatchback

### Performance

Max speed mph (km/h)	108 (174)☐	118 (190)☐	119.3 (192)☐	119.3 (192)☐	126 (203)☐
Acceleration 0–62mph	14.3	12.3	10.8	10.8	9.7
Max. performance (PS/rpm)	80/5,000	102/5,600	105/5,000	105/5,000	122/5,000
Max. torque (Nm/rpm)	132/3,800	148/3,800	175/1,550-4,100	175/1,550-4,100	200/1,500-4,000
Fuel consumption mpg (l/100km)					
Urban*	33.2 (8.5)	29.4 (9.6)	39.8 (7.1)	40.4 (7.0)	33.2 (8.5)
Extra Urban*	55.4 (5.1)	51.4 (5.5)	57.6 (4.9)	54.3 (5.2)	56.5 (5.0)
Combined*	44.1 (6.4)	39.8 (7.1)	49.6 (5.7)	47.9 (5.9)	44.8 (6.3)
CO2 emissions g/km*	149	166	134	136	148

## Estate

### Performance

Max speed mph (km/h)	108 (174)☐	117 (188)☐	118.7 (191)☐	118.7 (191)☐	125 (202)☐
Acceleration 0–62mph	14.4	12.4	10.9	10.9	9.8
Max. performance (PS/rpm)	80/5,000	102/5,600	105/5,000	105/5,000	122/5,000
Max. torque (Nm/rpm)	132/3,800	148/3,800	175 /1,550-4,100	175 /1,550-4,100	200/1,500-4,000
Fuel consumption mpg (l/100km)					
Urban*	33.2 (8.5)	29.1 (9.7)	39.8 (7.1)	40.4 (7.0)	33.2 (8.5)
Extra Urban*	55.4 (5.1)	50.4 (5.6)	57.7 (4.9)	54.3 (5.2)	56.5 (5.0)
Combined*	44.1 (6.4)	39.2 (7.2)	49.6 (5.7)	47.9 (5.9)	44.8 (6.3)
CO2 emissions g/km*	149	168	134	136	148

☐ Where law permits.

## Power transmission

**Clutch** Hydraulically-activated single-plate dry clutch with diaphragm spring, asbestos-free coating.

**Manual transmission** Five-speed manual transmission, fully synchronised with direct gearshift, six speed manual transmission.

**6 spd DSG transmission** - two coaxial wet multiple-disc clutch, electro-hydraulically operated.

**7 spd DSG transmission** - two coaxial dry multiple-disc clutch, electro-hydraulically operated.

**Please note:** With all manual gear boxes the clutch needs to be depressed to start the engine.

## Number of gears

5 Speed Manual 1.4 16V, 1.6 MPI, 1.6 TDI CR

6 Speed Manual 1.2 TSI, 1.4 TSI, 1.8 TSI, 2.0 T FSI, 2.0 TDI CR, 1.6 TDI CR 4x4

6 Speed DSG 2.0 T FSI, 2.0TDI CR, 2.0 TDI CR 4x4

7 Speed DSG 1.2 TSI, 1.4 TSI, 1.6 TDI CR, 1.8 TSI

## Chassis

**Front axle/rear axle** McPherson axle with the bottom triangular control arms and independent multi-link suspension with one longitudinal and two cross arms and torsion stabiliser.

**Suspension** Coil springs, telescopic shock absorbers, rear springs located outside the shock absorbers (gas shock absorbers in rear).

**Braking system** Hydraulic dual circuit brake system with diagonal interconnection, vacuum assisted dual rate brake booster.

**Front brakes** Disc brakes, with hollow discs, internal cooling and single-piston floating calliper.

**Rear brakes** Disc brakes with full discs and single-piston floating callipers.

**Handbrake** Mechanical handbrake operating on rear wheels.

**Steering** Direct rack and pinion steering with electromechanical power steering.

**Turning circle (m)** 10.2

1.4 TSI 122PS DSG	1.8 TSI 152PS	1.8 TSI 160PS	1.8 TSI 160PS DSG	2.0 T FSI 200PS	2.0 T FSI 200PS DSG
S/SE/SE Plus/Elegance	SE Plus	Elegance/Laurin & Klement	Elegance/Laurin & Klement	vRS	vRS
4-cylinder in-line engine	4-cylinder in-line engine	4-cylinder In-line engine	4-cylinder in-line engine	4-cylinder in-line engine	4-cylinder in-line engine
Yes	Yes	Yes	Yes	Yes	Yes
Direct Fuel Injection	Direct Fuel Injection	Direct Fuel Injection	Direct Fuel Injection	Direct Fuel Injection	Direct Fuel Injection
1,390	1,798	1,798	1,798	1,984	1,984
76.5 x 75.6	82.5 x 84.1	82.5 x 84.1	82.5 x 84.1	82.5 x 92.8	82.5 x 92.8
EU 5	EU 5	EU 5	EU 5	EU 5	EU 5
10.0:1	9.6:1	9.6:1	9.6:1	9.6:1	9.6:1

125 (202)☐	135 (217)☐	139 (223)☐	139 (223)☐	150 (242)☐	149 (240)☐
9.7	7.8	7.8	7.8	7.2	7.2
122/5,000	152/4,500-6,200	160/4,500-6,200	160/4,500-6,200	200/5,100-6,000	200/5,100-6,000
200/1,500-4,000	250/1,500-4,500	250/1,500-4,500	250/1,500-4,500	280/1,700-5,000	280/1,700-5,000

35.3 (8.0)	29.7 (9.5)	29.7 (9.5)	31.0 (9.1)	27.7 (10.2)	27.2 (10.4)
53.3 (5.3)	51.4 (5.5)	51.4 (5.5)	52.3 (5.4)	47.9 (5.9)	45.6 (6.2)
44.8 (6.3)	40.9 (6.9)	40.9 (6.9)	42.8 (6.6)	37.7 (7.5)	36.7 (7.7)
147	158	158	155	175	180

		Eleg/L&K	4x4	Scout		
124 (201)☐	136 (219)☐	138 (222)☐	135 (218)☐	131 (211)☐	138 (222)☐	149 (239)☐
9.8	7.9	7.9	8.1	8.4	7.9	7.3
122/5,000	152/4,500-6,200	160/4,500-6,200	160/4,500-6,200	160/4,500-6,200	160/4,500-6,200	200/5,100-6,000
200/1,500-4,000	250/1,500-4,500	250/1,500-4,500	250/1,500-4,500	250/1,500-4,500	250/1,500-4,500	280/1,700-5,000

35.3 (8.0)	29.7 (9.5)	29.7 (9.5)	27.4 (10.3)	27.7 (10.2)	31.0 (9.1)	27.7 (10.2)
53.3 (5.3)	51.4 (5.5)	51.4 (5.5)	45.6 (6.2)	44.1 (6.4)	52.3 (5.4)	47.9 (5.9)
44.8 (6.3)	40.9 (6.9)	40.9 (6.9)	36.7 (7.7)	36.2 (7.8)	42.8 (6.6)	37.7 (7.5)
147	158	158	180	182	155	175

☐ Where law permits.

## Tank

**Fuel tank content (litres)** 55 (60 for 4x4)

**Fuel** Lead-free petrol with RON 95 or Lead-free petrol with RON 91<sup>†</sup>. Diesel (2.0 TDI CR 140PS) CZ 49.

**Body type** Five-door, five-seat, double-space steel bodywork, fully galvanized body.

## Drag coefficient

Hatch: 0.3 (0.296 GreenLine II) Estate: 0.3 (0.34 Scout, 0.299 GreenLine II)

**Official fuel consumption for the Octavia range in mpg (litres/100km):**

**urban** 27.2 (10.4) - 60.1 (4.7);

**extra urban** 44.1 (6.4) - 83.1 (3.4);

**combined** 36.2 (7.8) - 74.3 (3.8).

**CO2 Range** 182 - 99 g/km

<sup>†</sup>Using low-octane fuel may affect engine performance.

We measure the maximum power output figures of our engines in PS or Pferdestärke (horse strength in German), which is the metric equivalent of bhp. To convert from metric to imperial horsepower, divide the PS figure by 1.0139.

\* Official fuel consumption according to EU Directive 99/94.

The consumption calculation according to 1999/100/EC is based on the actual unladen weight of the vehicle. Additional specifications can lead to a higher weight class and hence to consumption figures of this higher weight class. The driving style, road and traffic conditions, environmental influences and vehicle condition can in practice lead to consumption figures which may differ from those calculated in this standard.



# Measurements and Weights

## The ŠKODA Octavia Hatchback

Interior dimensions (mm)	Luggage storage space (litres)	Ground clearance (mm)
Legroom - front max./min. Legroom - rear max./min.	1,164 / 922 883 / 627	with rear seat upright with rear seat down
	585 1,455	Standard vRS
		140 127

All figures are in mm, unless otherwise stated



Petrol	1.4 16V 80PS	1.6 MPI 102PS	1.2 TSI 105PS	1.2 TSI 105PS DSG	1.4 TSI 122PS	1.4 TSI 122PS DSG	1.8 TSI 152PS	1.8 TSI 160PS	1.8 TSI 160PS DSG	2.0 T FSI 200PS	2.0 T FSI 200PS DSG
<b>Weight</b>											
Kerb weight* kg	1,180	1,205	1,190	1,215	1,235	1,255	1,275	1,275	1,295	1,360	1,380
Total weight kg	1,750	1,880	1,865	1,890	1,910	1,930	1,950	1,950	1,970	1,915	1,935
Payload** kg	570	675	675	675	675	675	675	675	675	555	555
Max roof load kg	75	75	75	75	75	75	75	75	75	75	75
Towing unbraked max kg	620	630	630	640	650	670	670	680	680	650	650
Towing braked max kg	900	1,200	1,200	1,200	1,200	1,200	1,300	1,300	1,300	1,400	1,400
Nose weight max kg	75	75	75	75	75	75	75	75	75	75	75

Diesel	1.6 TDI CR 105PS DPF	1.6 TDI CR 105PS DSG DPF	1.6 TDI CR 105PS DPF GreenLine II	2.0 TDI CR 110PS DPF	2.0 TDI CR 140PS DPF	2.0 TDI CR 140PS DSG DPF	2.0 TDI CR 170PS DPF	2.0 TDI CR 170PS DSG DPF
<b>Weight</b>								
Kerb weight* kg	1,275	1,300	1,315	1,320	1,320	1,340	1,395	1,415
Total weight kg	1,950	1,975	1,990	1,995	1,995	2,015	1,950	1,970
Payload** kg	675	675	675	675	675	675	555	555
Max roof load kg	75	75	75	75	75	75	75	75
Towing unbraked max kg	670	680	670	680	690	700	650	650
Towing braked max kg	1,400	1,400	1,400	1,400	1,400	1,400	1,400	1,400
Nose weight max kg	75	75	75	75	75	75	75	75

All measurements and weights are correct at time of going to print but may be subject to change and may vary according to passengers and load in vehicle.

## The ŠKODA Octavia Estate

Interior dimensions (mm)	Luggage storage space (litres)	Ground clearance (mm)
Legroom - front max./min. Legroom - rear max./min.	1,164 / 922 883 / 627	with rear seat upright with rear seat down
	605 1,655	Standard vRS Scout 4x4
		140 128 179 163

All figures are in mm, unless otherwise stated



Petrol	1.4 16V 80PS	1.6 MPI 102PS	1.2 TSI 105PS	1.2 TSI 105PS DSG	1.4 TSI 122PS	1.4 TSI 122PS DSG	1.8 TSI 152PS	1.8 TSI 160PS	1.8 TSI 160PS DSG	1.8 TSI 160PS 4x4	1.8 TSI 160PS 4x4 Scout	2.0 T FSI 200PS	2.0 T FSI 200PS DSG
<b>Weight</b>													
Kerb weight* kg	1,195	1,220	1,205	1,230	1,250	1,270	1,290	1,290	1,310	1,395	1,455	1,375	1,395
Total weight kg	1,755	1,895	1,880	1,905	1,925	1,945	1,965	1,965	1,985	2,070	2,130	1,930	1,950
Payload** kg	560	675	675	675	675	675	675	675	675	675	675	555	555
Max roof load kg	75	75	75	75	75	75	75	75	75	75	75	75	75
Towing unbraked max kg	620	630	630	640	650	660	670	670	670	730	750	650	650
Towing braked max kg	900	1,200	1,200	1,200	1,300	1,300	1,300	1,400	1,400	1,500	1,500	1,400	1,400
Nose weight max kg	75	75	75	75	75	75	75	75	75	75	75	75	75

Diesel	1.6 TDI CR 105PS DPF	1.6 TDI CR 105PS DSG DPF	1.6 TDI CR 105PS 4x4 DPF	1.6 TDI CR 105PS DPF GreenLine II	2.0 TDI CR 110PS DPF	2.0 TDI CR 140PS DPF	2.0 TDI CR 140PS DSG DPF	2.0 TDI CR 140PS 4x4 DPF	2.0 TDI CR 140PS DSG 4x4 DPF	2.0 TDI CR 140PS 4x4 DPF Scout	2.0 TDI CR 140PS DSG 4x4 DPF Scout	2.0 TDI CR 170PS DPF	2.0 TDI CR 170PS DSG DPF
<b>Weight</b>													
Kerb weight* kg	1,290	1,315	1,400	1,300	1,335	1,335	1,355	1,425	1,445	1,480	1,500	1,410	1,430
Total weight kg	1,965	1,990	2,075	1,975	2,010	2,010	2,030	2,100	2,120	2,155	2,175	1,965	1,985
Payload** kg	675	675	675	675	675	675	675	675	675	675	675	555	555
Max roof load kg	75	75	75	75	75	75	75	75	75	75	75	75	75
Towing unbraked max kg	670	680	730	670	690	690	700	740	740	750	750	650	650
Towing braked max kg	1,400	1,400	1,600	1,400	1,500	1,500	1,500	1,600	1,600	1,600	1,600	1,400	1,400
Nose weight max kg	75	75	75	75	75	75	75	75	75	75	75	75	75

\*Kerb weight is the mass of the vehicle with body work in running order.

\*\*Payload includes driver (at 75kg) & equipment.





## ŠKODA Customer Promise

Where actions speak louder than words



### Care and consideration for you and your car

**We will...**

- > Work competently and in your best interests
- > Treat you as a valued individual and respect and care for your property



### A flexible and convenient service

**We will...**

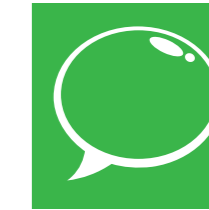
- > Provide flexibility and choice of dates and times for booking and collection
- > Ensure our price will be all-inclusive for the work we agree to undertake
- > Endeavour to diagnose a vehicle defect within 24 hours of the vehicle being presented to us
- > Offer free collection and delivery within a 10 mile radius (up to 20 minutes drive time) for pre-bookings
- > Provide a courtesy car or arrange onward mobility if your vehicle is to be kept overnight



### Expertise and attention to detail

**We will...**

- > Complete the work as agreed with you
- > Always gain your authority if any additional work is required
- > Keep you informed of progress and advise you when your car is ready
- > Complete a complimentary visual health check if your vehicle is left with us and include a professional recommendation of:
  - Any components that require replacing immediately
  - The point at which any part of your car should be re-checked in the near future
- > Check for any warrantable product enhancements recommended by ŠKODA and perform these free of charge
- > Always use genuine ŠKODA parts and accessories
- > Wash your car following a Service



### A clear explanation of our work

**We will...**

- > Ensure our invoice matches the booking price
- > Provide a full explanation of work completed and any additional charges made
- > Communicate clearly in an open and honest way avoiding jargon
- > Review the vehicle condition report and explain all work completed
- > Where possible, perform a workaround of the vehicle with you
- > Value your feedback and will encourage you to complete our Your Opinion Counts survey so you can tell us what you liked and how we can improve further

## Technical glossary

**ABS**: the anti-lock braking system prevents the wheels from locking during heavy or emergency braking, enabling the vehicle to remain steerable. When braking, wheel speed sensors measure the road wheel speed and should one or more wheels start to lock the system reduces brake pressure to that wheel.

**Elements of the ABS System :-**

• **Dual Rate Vacuum Brake Boosters:** increases brake effort under emergency braking conditions.

• **EBC:** Electronic brake control. The engine brake torque control regulates the power supply by intervening with the engine management system.

• **EBD** (aka EBV): Electronic Brake Distribution automatically distributes different pressures to the front and rear brakes to stop the rear wheels from locking up under heavy braking. It also compensates for loaded and unloaded vehicles therefore doing away with the need for a Load Sensing Valve on the rear axle.

**CAN Bus:** the CAN Bus is an electronic data bus which links the various different electronic control systems in the car. It ensures ideal co-ordination between systems and reduces the amount of wiring needed in the car.

**Fuel cut-out:** should one or more of the airbags inflate after an accident, this system automatically cuts out the fuel supply, thus preventing subsequent leakage of the diesel or petrol.

**Trip Computer:** the trip computer not only features an impressive range of data displays, operating it is simplicity itself. A multifunction touch key enables you to call up all relevant data on the easy-to-read display. Features include external temperature, time, current fuel consumption, average fuel consumption, miles driven and average speed.

**DPF:** diesel particulate filter is part of the exhaust system responsible for cleaning the engine exhaust gases before they enter the atmosphere. The DPF catches soot particles emitted in the exhaust gas and it works in conjunction with the catalytic converter, which reduces the amount of harmful gases entering the atmosphere. The DPF must periodically be emptied of the soot particles, a process known as regeneration. This involves elevated exhaust system temperatures. A driving style is required during regeneration, where a constant vehicle speed above 37 mph must be maintained. This does not always suit customers who make frequent short journeys or experience stop/start driving or drive within inner-city or urban areas.

**CR:** the completely new range of diesel engines are built on a system of Common-Rail fuel injection. The diesel engines have a high-pressure common rail direct injection fuel system and four-valve technology. As a result, the new engines are much quieter, more refined in their operation and consume less fuel, compared to the Pump Duse engines and significantly reduce emissions.

**ESC:** Electronic Stability Control is designed to stabilise the dynamic handling response of the vehicle by counteracting any tendency towards oversteer or understeer. The ESC constantly compares the actual movement of the vehicle with predetermined values and according to the situation ESC reacts by braking each wheel individually (according to direction of slip) and automatically adjusting the engine’s output.

**Elements of ESC system:-**

• **ASR:** anti-slip regulation traction control ensures the Octavia’s stability when pulling away or accelerating. If the engine power or torque being transmitted to the drive wheels is too great, for example on a slippery road surface, engine torque is automatically reduced until optimum road holding returns, thus preventing wheelspin. A light indicates whether the ASR system is on. It can be manually switched off.

• **MSR:** the engine torque control system recognises when the wheels are subject to too much slippage and regulates the power supply by intervening in the engine management system. This prevents wheelspin when, for example, changing down on a smooth or wet road surface. MSR is a constituent part of the ASR system.

• **EDL:** the electronic differential lock continually compares the rpm of the drive wheels, and if it identifies a difference between them which could lead to an individual wheel spinning, for example if the two wheels are on different types of surface or accelerating on wet leaves, the system brakes the wheel affected until uniform rpm of all drive wheels is restored.

• **HBA:** Hydraulic brake assistant increases the optimal build-up of brake power. It ensures complete use of the brake system potential, thus shortening the braking distance.

• **HHC:** Hill hold control allows for a safe hill start by holding the brake for a small amount of time, reducing the risk of unintentional reversing or roll back.

• **TPM:** Draws the driver’s attention to any pressure loss in any of the tyres. Early warning can prevent damage from occurring as a result of an under inflated tyre or a defect that radically changes the cars behaviour and driveability.

• **DSR:** Driver Steering Recommendation – in a crisis situation it helps the driver stabilize a skid by making a slight intervention in the steering.

• **ESBS:** Electronic Stability Brake System – targeted interventions in the braking process improve the handling of a car as it brakes when passing round a bend and keeps it from veering.

• **AFM:** records and assesses all available data about the journey to optimize the ESC system’s reactions, which can thus be adapted to any driving style and the current vehicle payload.

• **Xenon lights:** the Xenon lights produce about 2.5 times the light of standard Halogen lights with 35% less energy consumption.

• **XDS:** XDS is an advanced electronic differential lock linked to a sophisticated Electronic Stabilisation Control (ESC) system, designed to maximise traction and improve responses. In moments of fast cornering it provides pressure on the inside wheel to prevent wheel spinning. The result is better traction and a reduction of any tendency to under steer. The driver will experience a more agile, precise and calming driving performance with better traction out of bends.

## Customer services

**Talk to us on 08457 745 745**

No matter what the query, our dedicated call centre is always ready to listen. No matter how big or small the request, speak to one of our customer care advisors to see if they can help. The call centre is open from 8.30am-5.30pm. If you're calling out of hours, then a message can be left and you'll be contacted back. Alternatively you can email us on customerservices@skoda.co.uk

**Peace of mind with a ŠKODA warranty**

In the first two years of owning your car, you'll get the peace of mind of a two year unlimited mileage warranty. In addition, you'll also get a further warranty on new vehicles supplied through the appointed dealer network until the vehicle has completed 60,000 miles or the end of the third year, whichever is sooner. You can even extend your warranty to 4 or 5 years. See page 20 for prices.

Your Octavia also benefits from a 3 year paint warranty and 12 year body protection warranty.

**A network that's here to help**

With 18 years in the top 10 of JD Power’s customer satisfaction survey, our network of approximately 135 retailers knows how to treat a customer. You can be sure that as a ŠKODA customer, your retailer will look after you from the moment you walk through the door, throughout the life of your ŠKODA. Your new Octavia will be serviced and maintained to the highest standards by specially trained ŠKODA technicians. And when you need a spare part you'll be happy to know that most are held in stock, or can be ordered within 24 hours. So if top class customer satisfaction is what you’re after, the ŠKODA network will be there for you.

**Motability**

People in receipt of the Higher Mobility Component of the Disability Living Allowance receive special help from ŠKODA. Preferential prices on low cost Contract Hire are available through your local approved Motability retailer. For full details, contact your retailer.

**If your ŠKODA's in trouble, rely on ŠKODA Assistance**

Completely free of charge, every new ŠKODA is covered by ŠKODA Assistance, provided by the RAC through a dedicated team. This cover lasts for 3 years, with no mileage limit. So if you ever break down, you can use the freephone number to call out someone who really knows about ŠKODA cars to help. This service is even available in Europe, so you don't need additional breakdown cover when you're driving on the continent.

**Financing your ŠKODA**

We all know that times are hard, so ŠKODA Finance specialises in providing funding solutions for ŠKODA drivers. Regardless of whether you're a private or business user, you can choose from a range of funding options.

**Finance products available are:**

- Solutions – a personal contract plan
- Hire purchase
- Lease purchase
- Finance lease
- Contract hire

With all ŠKODA Finance products you can choose a fixed-cost maintenance plan designed to help you budget accurately. No matter what finance product you choose, your local ŠKODA retailer will be able to provide you with a personalised quote that could meet your budget and vehicle needs. ŠKODA Finance is a trading name of Volkswagen Financial Services (UK) Limited, Brunswick Court, Yeomans Drive, Blakelands, Milton Keynes MK14 5LR. Registered in England number 2835230.

**Congestion charges**

Cars that emit 100g/km or less of CO2 (such as Octavia GreenLine II model) qualify for a 100% discount for congestion charging. Vehicles need to be registered to qualify, for more information visit www.tfl.gov.uk. There is currently a £10 registration payment required for the application to be completed.

**Adding that little extra to your car**

If the standard specification and factory fitted options aren't enough for you, then why not take a look at our range of retailer fitted accessories? A separate accessories brochure can be found at your local retailer, or can be ordered by phoning our call centre, or by going on-line at www.skoda.co.uk

**ŠKODA Insurance**

We want you to start enjoying your new car from day one and thanks to ŠKODA Insurance complimentary seven day cover you can. Call free on 0800 316 7895, provide us with a few details, and we'll send a cover note to your retailer. They will then tax your car and you can drive it away. Telephone lines are open Monday to Friday 8am – 9pm and Saturday 9am – 5pm.

For details of our full range of insurance products visit insurewithskoda.co.uk. You can get an annual car insurance quote for your ŠKODA and buy it online too.

ŠKODA Insurance is a trading name of Volkswagen Insurance Service (Great Britain) Limited, an appointed representative of Volkswagen Financial Services (UK) Limited, registered in England number: 2835230 (registered office: Brunswick Court, Yeomans Drive, Blakelands, Milton Keynes MK14 5LR). ŠKODA Insurance motor insurance is sold, underwritten and administered by Allianz Insurance plc, registered in England number: 84638 (registered office: 57 Ladymead, Guildford, Surrey GU1 1DB). Both organisations are authorised and regulated by the Financial Services Authority (FSA), whose registration numbers are 311988 and 121849 respectively. Authorisation details can be checked on the FSA's register at fsa.gov.uk or call 0845 606 1234. Volkswagen Financial Services (UK) Limited and Allianz Insurance plc are not part of the same corporate group.

## Extended warranty

**Exclusions and limitations**

Wear and tear components will only be considered under the terms of the warranty for the first of six months or 6,500 miles, whichever is soonest. These include, but are not limited to brake linings and disc pads, clutch release bearings, clutch pressure plates and centre plates, tyres, wiper blades, seat and backrest covers, floor coverings, spark plugs, batteries for key fobs and alarms, light bulbs and shock absorbers.

Mechanical adjustments including but not limited to adjustments to doors, flaps, boot lids, bonnets and sunroof, brake adjustment, clutch adjustment, v belt adjustment, ignition adjustment, headlight adjustment, steering geometry adjustments and wheel balancing are excluded.

**Damage (including but not limited to the following) is excluded:**

- Damage caused by your failure to take all reasonable steps to prevent mechanical damage from occurring.
- Damage or defects caused by not having the vehicle serviced in accordance with the manufacturer’s guidelines.
- Damage or defects caused by improper use of the vehicle, neglect or use of the vehicle for motor sports activities.
- Damage caused by an accident.
- Damage to paintwork or chrome caused by external influences, such as climatic, chemical or industrial pollution.
- Damage resulting from the use of non-original replacement parts.

Routine maintenance and servicing is not covered by the warranty. Incidental or consequential costs such as hotel charges, car hire, loss of personal effects or income are not recoverable under the terms of the warranty.

# Service Intervals

When you order your Octavia, you can choose whether your car is on a fixed or a flexible service regime. Your retailer will help you decide which regime suits how your car will be driven, enabling your car to stay in the best possible shape.

Fixed regime: Service every 10,000 miles or one year (whichever comes first). This is recommended if the vehicle is likely to be used in the following way:

- Driven fewer than 10,000 miles per annum **and/or**
- Mainly short journeys, drive mostly in towns or cities **and/or**
- High vehicle loading/towing and frequent hill climbs **and/or**
- Heavy accelerating and braking, using high revs

Flexible regime: Sensors in the engine detect when a service is needed. You will be informed of this by a service light which will show at any point between 9,000 and 20,000 miles, up to 24 months (whichever comes first).

The flexible service regime is recommended for vehicles with a daily mileage of more than 25 miles where the vehicle is driven regularly and mainly at a constant speed with minimum vehicle and engine loading, minimal towing and driven in an economical manner.



The information in this brochure referring to specification, design, equipment, material and external appearance relates to the time at which this brochure was printed. Whilst every effort is made to ensure its accuracy, the information in this brochure is not binding and is subject to alteration. Some illustrations in this brochure depict left hand drive models, with both standard and optional equipment shown. Please confirm exact specifications, prices and colour availability with your SKODA retailer who will be notified of any specification changes as they occur.

**Edition:** UK 11/12

**Information:** 08457 745 745

**Internet:** [www.skoda.co.uk](http://www.skoda.co.uk)

**E-mail:** [customerservices@skoda.co.uk](mailto:customerservices@skoda.co.uk)

Welcome to your SKODA retailer