

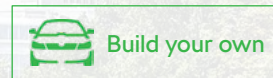
# KAROQ



**ŠKODA**







# TAKE IT EASY, TAKE IT ANYWHERE

## Introducing the KAROQ.

Every journey can be the beginning of something. A valuable experience, a happy coincidence or a shared memory. And with the versatile ŠKODA KAROQ, you can make those journeys comfortably. With its unmistakable SUV styling, the KAROQ is as practical as it is head-turning. Its proportions are underlined by a distinctive front grille and all-round protective elements. LED illumination and eye-catching alloy wheels complete the impressive exterior.

Step inside, and you'll be welcomed by customary ŠKODA offerings like spaciousness, all-you-can-have connectivity features and reassuring assistance systems. And for those of you looking for more adventurous detours, the KAROQ also comes with an optional 4x4 drive.

**That's Simply Clever. That's ŠKODA**



Models shown are not UK specification. Some of the equipment shown is optional.

<a href="#">Introduction</a>	<a href="#">Design &amp; drivetrain</a>	<a href="#">Connectivity</a>	<a href="#">Comfort &amp; convenience</a>	<a href="#">Driver's assistance</a>	<a href="#">Vehicle selector</a>	<a href="#">Standard equipment</a>	<a href="#">Paint options</a>	<a href="#">Option packages</a>	<a href="#">Model prices</a>	<a href="#">Option prices</a>	<a href="#">VED (Vehicle Excise Duty)</a>	<a href="#">Technical specification</a>	<a href="#">Additional information</a>
------------------------------	---	------------------------------	---	-------------------------------------	----------------------------------	------------------------------------	-------------------------------	---------------------------------	------------------------------	-------------------------------	---	---	--



# A LANDMARK ON ANY ROAD

With its robust body with protective features and higher ground clearance, the KAROQ invites you to venture off the beaten track. At the same time, its spacious design, sleek lines, and stylish wheels accentuate the car's ambition to be a great urban SUV.



## DYNAMIC FRONT DESIGN

The front view of the KAROQ is characterised by the sharply cut headlights and integrated fog lamps.



## PANORAMIC SUNROOF

This electrically adjustable panoramic sunroof provides extra sunlight and fresh air at the simple touch of a button.



## FULL LED TAIL LIGHTS

The tail lights have been innovated both in terms of shape and technology. Fitted with animated turn indicators, they significantly improve the visibility of your car for other drivers. In addition, when you lock and unlock your car, the welcome effect activates the animation feature.



Models shown are not UK specification. Some of the equipment shown is optional.



# HOME FROM HOME

From ambient lighting to heated seating, the KAROQ's premium interior features a host of intelligent elements that make you feel instantly at home.



### VIRTUAL COCKPIT

The Virtual Cockpit displays on-board computer specifications in combination with other information, such as navigation. You can choose from five layouts controlled via the View button on the steering wheel.



### LED AMBIENT LIGHTING

The ambient lighting offers a choice of ten colour options for the dashboard and front and rear door lighting, meanwhile the front and rear foot area illumination comes in white.



### ELECTRICALLY ADJUSTABLE FRONT SEATS

To enhance the front passenger's comfort, for the first time ever in a KAROQ, the front-passenger seat comes with a memory function and is electrically adjustable.



### TRI-ZONE CLIMATE CONTROL

This intelligent system allows three autonomous thermal comfort zones to be set for the driver, front passenger and rear passengers.



Models shown are not UK specification. Some of the equipment shown is optional.



# THE GREAT ESCAPE

Whether heading out on an urban adventure or embracing the extreme, the KAROQ delivers all the performance you need. Simply buckle up your seatbelt, select your driving mode and see where the unknown takes you.



## FOUR-WHEEL DRIVE

The 4x4 system is designed to smoothly distribute the torque between front and rear axles automatically, to help you maintain control and stability.



## DIRECT SHIFT GEARBOX (DSG)

The seven-speed DSG automatically adapts to your driving style, whilst taking road conditions into account. It reduces the strain on the engine and stress to the driver, by deciding when to change gear, leaving you free to concentrate on the journey.



## DRIVE MODE SELECT

Featuring Normal, Sport and Eco mode, plus Individual mode to truly meet all your needs. All-wheel drive versions also offer an optional Off-road mode, designed specifically for low-traction conditions.



Models shown are not UK specification. Some of the equipment shown is optional.



# ŠKODA CONNECT: TAKE THE ONLINE WORLD WITH YOU

To be online fully and permanently means not only having access to entertainment and information, but also possible assistance while on the move. ŠKODA Connect, which includes Infotainment Online and Care Connect services\*, is your gateway to a world of unlimited communication possibilities.



## ŠKODA CONNECT

Real-time traffic updates. Remote Access\* and vehicle control. Instant assistance service. Just a few ways ŠKODA Connect turns the KAROQ into a fully interconnected car that's ready for everything life and the road has to throw at it. Download the MyŠKODA app to take full advantage, or [click here to learn more about ŠKODA Connect.](#)



### SMARTLINK

With the SmartLink, the car's infotainment system enables the driver to safely use the phone while driving. Plus, all installed applications that are certified as safe for vehicles are compatible with Apple CarPlay or Android Auto, which are also available wirelessly\*\*.



### NAVIGATION SYSTEM

The Amundsen satellite navigation with 8" touchscreen display and integrated Wi-Fi will get you from A to B, but why stop there? With its Bluetooth® and Wi-Fi capability, it offers more connectivity on-the-go.



### EMERGENCY CALL

An SOS call is made automatically in the event of an emergency on the road. The system can also be activated manually by pressing the red button on the roof console. With the eCALL+ feature, information such as the vehicle's location or the number of people in the vehicle is provided to the first responders.

Images shown may not be UK specification. Some of the equipment shown is optional. \* Remote Access is optional on all trims. \*\* For further information regarding wireless functionality, contact your ŠKODA partner. For usage terms and compatibility information for SmartLink, visit our website.



# HIGHLY ACCOMMODATING

Maximising space has always been ŠKODA's way. It's why the car's flexible rear seats can be configured to your precise journey requirements, while the cleverly designed storage compartments and adaptable boot space ensures everything you need is always close at hand.



### SPACIOUS STORAGE

Several spacious storage compartments have been included in the interior.



### SIMPLY CLEVER FEATURES

KAROQ offers the well-known Simply Clever features clearly arranged in a single package. The package includes a net restraint system, cargo elements and a double-sided boot mat.



### JUMBO BOX

Featuring reversible cup holders, the Jumbo Box will also store your gadgets, house keys and cards.



### FOLDABLE TABLES

Built into the backrests of both front seats, the foldable tables with drink holders can be used for more than just your refreshments.



**FOLD IT. MOVE IT. REMOVE IT.**

The VarioFlex rear seating system allows you to customise the interior according to your current situation. It is comprised of three separate rear seats. You can fold each one down independently, as well as remove them completely

Models shown are not UK specification. Some of the equipment shown is optional.



# COMFORT IS YOUR CO-DRIVER

Indulge yourself even when driving. Modern technologies, remarkable roominess, and a host of practical details will turn your everyday journey into a luxury trip.



## ELECTRICALLY FOLDING TOW BAR

Activated by a switch in the boot, the KAROQ's foldable tow bar ensures it is safely hidden when not required.



## VIRTUAL PEDAL

On-hand when none of yours are free. Simply use a 'kick motion' underneath the luggage compartment or use the key to effortlessly open the boot.



## REAR-VIEW CAMERA

Hidden under the boot handle, the rear-view camera makes light work of reverse parking, with an integrated washer to keep obstacles visible.



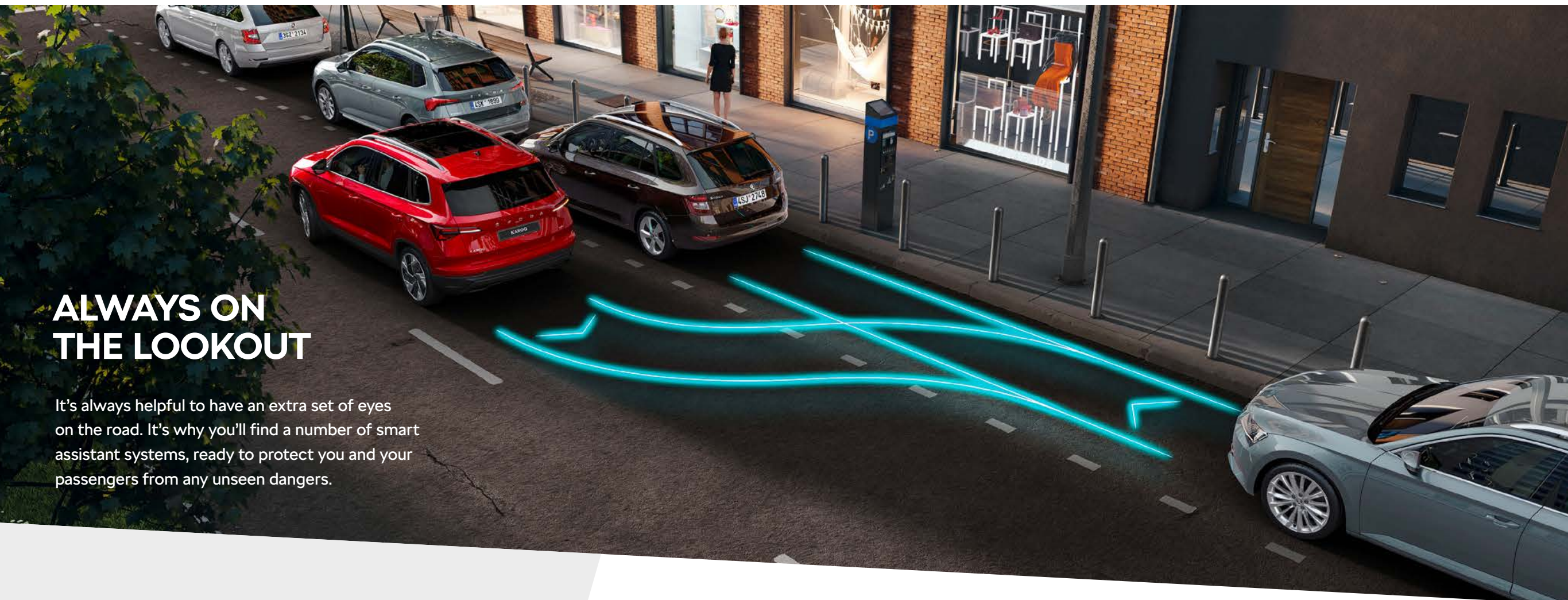
## FRONT AND REAR ISOFIX SEATS

Enjoy more room to relax and play in the back with the generous knee and headroom that KAROQ offers. ISOFIX connections on rear seats, as well as the front passenger seat also ensure younger passengers can travel safely.



Models shown are not UK specification. Some of the equipment shown is optional.

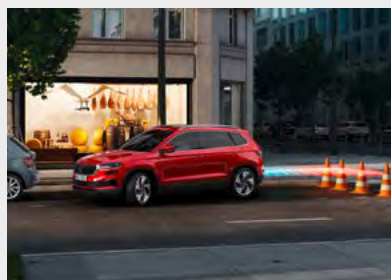




# ALWAYS ON THE LOOKOUT

It's always helpful to have an extra set of eyes on the road. It's why you'll find a number of smart assistant systems, ready to protect you and your passengers from any unseen dangers.

## PARKING PACKAGE

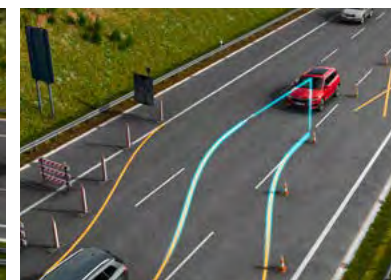
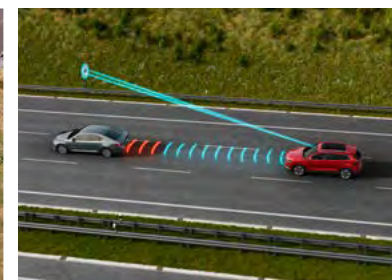


PARKING SENSORS

REAR VIEW CAMERA

Make parking a breeze with the Parking Package. Helping you to park in the most challenging of spaces, the front and rear sensors guide you both in and out of any parking position, while the rear view camera takes the stress out of reversing.

## TRAVEL ASSIST PACKAGE



TRAFFIC SIGN RECOGNITION

ADAPTIVE CRUISE CONTROL

LANE ASSIST

TRAFFIC JAM ASSIST

Our Travel Assist Package features an onboard camera that recognises and displays key traffic signs on the trip computer and navigation system, helping you to be safer behind the wheel. The adaptive cruise control keeps you a safe distance from the vehicle in front and enables you to maintain a constant speed without using the pedals. The package also features lane assist that detects road markings and supports steering if you veer too close to the edge, as well as a traffic jam assist.

Images shown may not be UK specification. Some of the equipment shown is optional.



# VEHICLE SELECTOR

KAROQ uses a new way of configuration to build the car of your choice. The four categories below are an ideal starting point, simply click on the heading for more details.

## 1 TRIMS

First choose your trim.  
SE Drive, SE L or Sportline?

### SE DRIVE

Entry level trim raising the bar on comfort and safety

### SE L

The SE L offers unparalleled levels of value for money. The generous standard equipment provides all of the essentials required for any journey, all bundled up at a great price.

### SPORTLINE

Made for design, sportiness and enhanced technology. The range-topping model of the updated KAROQ can immediately be recognised by the SPORTLINE-typical black design features.

## 2 ENGINES

Next pick your engine.

### SE DRIVE

- 1.0 TSI 110 PS
- 1.5 TSI 150 PS
- 1.5 TSI 150 PS DSG
- 2.0 TDI 116 PS
- 2.0 TDI 116 PS DSG
- 2.0 TDI 150 PS

### SE L

- 1.0 TSI 110 PS
- 1.5 TSI 150 PS
- 1.5 TSI 150 PS DSG
- 2.0 TDI 116 PS
- 2.0 TDI 116 PS DSG
- 2.0 TDI 150 PS
- 2.0 TDI 150 PS DSG 4x4

### SPORTLINE

- 1.5 TSI 150 PS
- 1.5 TSI 150 PS DSG
- 2.0 TSI 190 PS DSG 4x4
- 2.0 TDI 150 PS
- 2.0 TDI 150 PS DSG 4x4

## 3 EXTERIOR PAINT

Set the tone with your exterior paint colour.



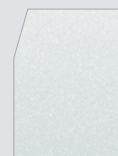
**Solid Colour**  
Energy Blue\*



**Special Colour**  
Meteor grey



**Metallic**  
Brilliant Silver



**Metallic**  
Moon White



**Metallic**  
Petrol Blue\*



**Metallic**  
Graphite Grey



**Pearl Effect**  
Black Magic



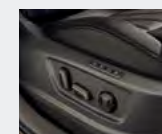
**Exclusive**  
Velvet Red



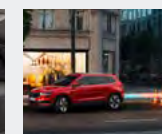
**Exclusive**  
Phoenix Orange

## 4 OPTION PACKAGES

Select from 12 option packages and individual technology items to give your KAROQ a truly personal touch.



Convenience Package



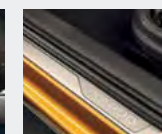
Parking Package



Travel Assist Package



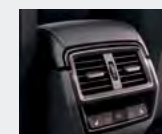
Travel Assist Package Plus



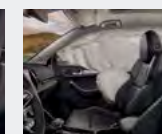
Design Package



Winter Package



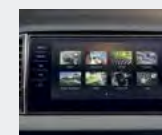
Winter Package Plus



Safety Package



Amundsen Package Plus



Columbus Package



Performance Package



Light Package

Images shown may not be UK specification. Some of the equipment shown is optional.

Please note: Colour range is reproduced for illustration purposes only. Actual on-car colours may vary from those shown as screen technology does not allow exact reproduction of the paint colours. Your SKODA Retailer will be pleased to advise you. \* Not available on SportLine.



# KAROQ RANGE



SE DRIVE



SE L



SPORTLINE

Images displayed may not be UK specification and may contain optional equipment.

[Introduction](#)

[Design & drivetrain](#)

[Connectivity](#)

[Comfort & convenience](#)

[Driver's assistance](#)

[Vehicle selector](#)

**Standard equipment**



[Paint options](#)

[Option packages](#)

[Model prices](#)

[Option prices](#)

[VED \(Vehicle Excise Duty\)](#)

[Technical specification](#)

[Additional information](#)



# KAROQ SE DRIVE

With comfort enhancing features, the KAROQ SE Drive provides the perfect opportunity to escape the norm in total relaxation.



REAR LED LIGHTS WITH DYNAMIC INDICATORS AND WELCOME EFFECT



DUAL-ZONE CLIMATE CONTROL



SMARTLINK

## STANDARD EQUIPMENT

### WHEELS

- > 17" SCUTUS ALLOY WHEELS IN SILVER

### EXTERIOR

- > BLACK ROOF RAILS
- > ELECTRICALLY ADJUSTABLE, HEATED AND FOLDABLE AUTO-DIMMING DOOR MIRRORS
- > PRIVACY GLASS
- > REAR LED LIGHTS WITH DYNAMIC INDICATORS AND WELCOME EFFECT

### INTERIOR

- > FABRIC UPHOLSTERY
- > TWO-SPOKE LEATHER MULTIFUNCTION STEERING WHEEL
- > MANUAL LUMBAR SUPPORT FOR FRONT SEATS
- > CHROME FRAMED AIR VENTS AND DOOR HANDLES
- > FOLDABLE TABLE ON FRONT SEAT BACKRESTS AND TWO TABLE HOLDERS

### ENTERTAINMENT AND COMMUNICATION

- > 8" AMUNDSEN TOUCHSCREEN SATELLITE NAVIGATION SYSTEM WITH WEB RADIO AND EIGHT SPEAKERS
- > 8" DIGITAL DISPLAY
- > SMARTLINK (WIRELESS FOR APPLE AND WIRED FOR ANDROID)
- > CARE CONNECT - PROACTIVE SERVICES (10 YEARS) AND EMERGENCY CALL

### SAFETY AND SECURITY

- > ISOFIX CHILD SEAT PREPARATION, OUTER REAR AND FRONT PASSENGER SEATS
- > FRONT ASSIST
- > FRONT, HEAD, KNEE, CURTAIN AND FRONT SIDE AIRBAGS

### COMFORT AND CONVENIENCE

- > REAR PARKING SENSORS
- > LIGHT AND RAIN SENSOR WITH AUTO-DIMMING REAR VIEW MIRROR
- > DUAL-ZONE CLIMATE CONTROL
- > CRUISE CONTROL WITH SPEED LIMITER

Models shown are not UK specification and may include optional equipment. Information regarding tyre technical specifications can be found by visiting the ŠKODA car configurator [here](#).



# KAROQ SE DRIVE



FABRIC UPHOLSTERY



ELECTRICALLY ADJUSTABLE, HEATED AND FOLDABLE  
AUTO-DIMMING DOOR MIRRORS



17" SCUTUS ALLOY WHEELS IN SILVER

## RECOMMENDED OPTIONS

- > **STEEL SPACE SAVING SPARE WHEEL**  
Giving you that extra peace of mind, should you find yourself with a flat tyre.

---

- > **TOW BAR PREPARATION**  
Prepares the vehicle should you want to add a tow bar to the vehicle at a later stage.

---

- > **WINTER PACKAGE\***  
This is the perfect package for cold winter days – heated front seats to help keep you warm and heated windscreen washer nozzles to ensure ice is never a problem.

---

- > **PARKING PACKAGE**  
Make manoeuvring a tight space a breeze with rear view parking camera and front and rear parking sensors.



Models shown are not UK specification. \* Only available with 2-spoke heated leather steering wheel.  
Information regarding tyre technical specifications can be found by visiting the ŠKODA car configurator [here](#).



# KAROQ SE L

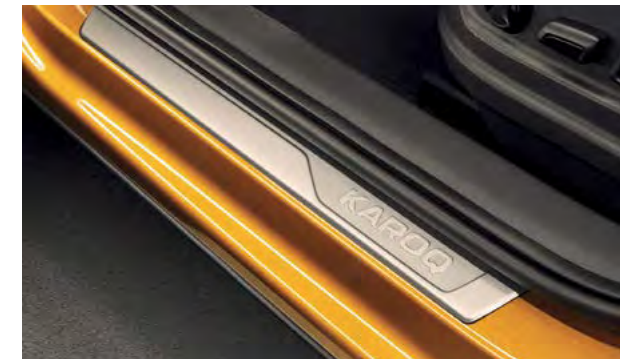
With heated front seats, LED daytime running lights and striking 18" Miran alloys, this luxury trim ensures every adventure is enjoyed in style and comfort.



REAR VIEW CAMERA



KEYLESS ENTRY AND START/STOP SYSTEM



FRONT DOOR STEPS WITH KAROQ BADGING

## STANDARD EQUIPMENT (OVER SE)

### WHEELS

- > 18" MIRAN ALLOY WHEELS

### EXTERIOR

- > CHROME ROOF RAILS
- > EXTENDED REAR SPOILER
- > HEATED WINDSCREEN WASHER NOZZLES
- > HEADLIGHT WASHERS

### INTERIOR

- > MICROSUEDE UPHOLSTERY
- > 2-SPOKE HEATED LEATHER MULTIFUNCTION STEERING WHEEL
- > HEATED FRONT SEATS
- > VARIOFLEX SEATS
- > DOOR SILLS WITH KAROQ BADGING

### COMFORT AND CONVENIENCE

- > FRONT AND REAR PARKING SENSORS
- > REAR VIEW CAMERA
- > KEYLESS ENTRY AND START/STOP SYSTEM
- > DRIVE MODE SELECT (OPTIONAL OFF-ROAD FUNCTION FOR 4X4)\*

Models shown are not UK specification. \* Off-road function for 4x4 available with Performance Package. Information regarding tyre technical specifications can be found by visiting the ŠKODA car configurator [here](#).



# KAROQ SE L



MICROSUEDE UPHOLSTERY



VARIOFLEX SEATS



18" BRAGA ALLOY WHEELS

## RECOMMENDED OPTIONS

### > AMUNDSEN PACKAGE PLUS

Upgrade your standard 8" Amundsen touchscreen satellite navigation display by adding a virtual cockpit and wireless phone charging for enhanced comfort and connectivity.

### > WINTER PACKAGE PLUS

The SE L trim offers the Winter Package as standard, however, an upgrade to the Plus version would bring heated rear seats and a heated windscreen\*.

### > TRAVEL ASSIST PACKAGE

Bring safety and comfort to the next level with adaptive cruise control that features a collision predictive function. The package also includes traffic sign recognition, traffic jam assist and lane assist that monitors your lane position. Should you wish to use a dashboard camera, a handy USB-C port for rear view mirror is also included.

### > PANORAMIC SUNROOF

Allows natural light to flood into the cabin and looks great both inside and out.



Models shown are not UK specification. \* Heated windscreen not available on 1.0 TSI 110PS engine. Information regarding tyre technical specifications can be found by visiting the ŠKODA car configurator [here](#).



# KAROQ SPORTLINE – SPORTY FROM ANY ANGLE

They say there is no rest for the restless. But the new ŠKODA KAROQ SPORTLINE is certainly a comfortable way to unleash your active ambitions. With sharp, sleek details both outside and in, it makes its athletic intentions crystal clear. And being the ŠKODA that it is, plenty of clever solutions, generous space and modern connectivity features ensure that you can now indulge your thirst for adventure in total comfort.



Models shown are not UK specification. Some of the equipment shown is optional. Foldable table on front seat backrests are not available on this trim. Glasses storage compartment is not available on this trim. SportLine includes fixed seating and rear boot cover (solid). Information regarding tyre technical specifications can be found by visiting the ŠKODA car configurator [here](#).



# KAROQ SPORTLINE



## BLACK STYLING

The striking black radiator grille, door mirrors and roof railings give the SportLine's dynamic silhouette an edgier and sportier look. The SportLine logo sits proudly on both front wings.



## SPORTS STEERING WHEEL

The three-spoke heated Sport multifunction steering wheel in perforated leather with silver stitching puts everything you need at your fingertips.



## LIGHTS

The newly designed MATRIX LED headlights with adaptive front light system and cornering function give the driver maximum light without dazzling other road users.



## ALLOY WHEELS

19" Sagitarius anthracite grey alloy wheels with matt black Aero covers.



## SPORTS SEATS WITH THERMOFLUX®

The sports seats with contrasting silver stitch and revolutionary three-ply air-permeable Thermoflux® fabric let you know that you're sitting in something special.

### STANDARD EQUIPMENT (OVER SE L)

#### WHEELS

- > 19" SAGITARIUS ANTHRACITE GREY ALLOY WHEELS WITH MATT BLACK AERO COVERS

#### EXTERIOR

- > PANORAMIC SUNROOF
- > FULL LED MATRIX HEADLIGHTS WITH ADAPTIVE FRONT LIGHT SYSTEM, CORNERING FUNCTION AND POOR WEATHER LIGHT
- > ŠKODA LETTERING ON TAILGATE IN BLACK
- > SPORTLINE BADGE ON FRONT FENDER
- > BLACK ROOF RAILS, DOOR MIRRORS & RADIATOR GRILLE
- > FRONT AND REAR SPORTS BUMPERS

#### INTERIOR

- > 3-SPOKE SPORT MULTIFUNCTION HEATED LEATHER STEERING WHEEL
- > LED INTERIOR LIGHT PACKAGE AND ŠKODA WELCOME LOGO
- > SPORT SEATS IN SPORTLINE FABRIC WITH THERMOFLUX® AND SILVER STITCHING
- > DOOR STEPS IN FRONT WITH SPORTLINE LOGO
- > ALUMINIUM PEDALS

#### COMFORT AND CONVENIENCE

- > ELECTRICALLY OPERATED BOOT
- > VIRTUAL PEDAL

### RECOMMENDED OPTIONS

#### > WINTER PACKAGE PLUS

Make cold winter days hassle free with heated front and rear seats, heated windscreen and heated washer nozzles.

#### > COLUMBUS PACKAGE

The all-glass design of the 9.2" Columbus satellite navigation dominates the centre console. The package also includes virtual cockpit and wireless charging function for your phone.

#### > CONVENIENCE PACKAGE\*

Bring comfort to the next level with electrically adjustable front seats with a memory feature to adjust to each driver's preferred driving position.

Models shown are not UK specification. \* Only available in combination with leather upholstery. Some of the equipment shown is optional. Foldable table on front seat backrests are not available on this trim. Glasses storage compartment is not available on this trim. SportLine includes fixed seating and rear boot cover (solid). Information regarding tyre technical specifications can be found by visiting the ŠKODA car configurator [here](#).



# PAINT OPTIONS

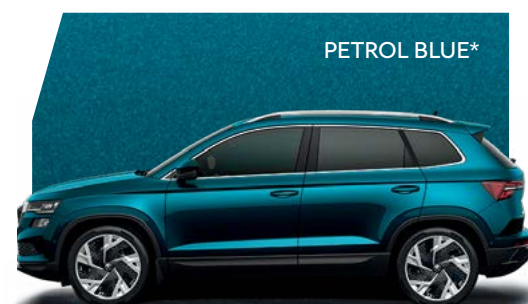
## SOLID COLOUR



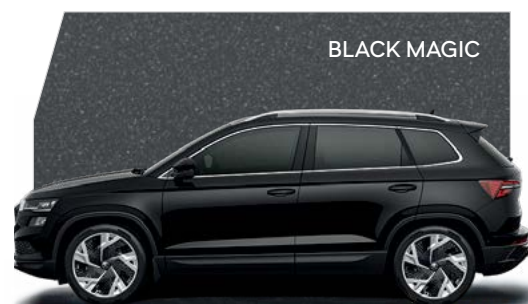
## SPECIAL COLOUR



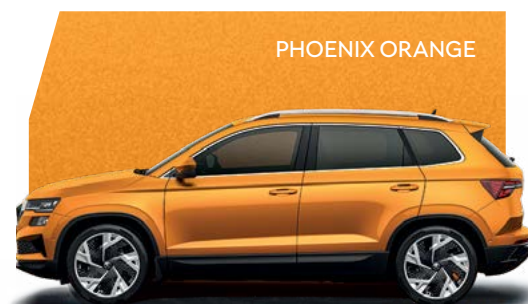
## METALLICS



## PEARL EFFECT



## EXCLUSIVE COLOURS



\* Colour not available on SportLine.

Please note: Colour range is reproduced for illustration purposes only. Actual on-car colours may vary from those shown as screen technology does not allow exact reproduction of the paint colours. Your ŠKODA Retailer will be pleased to advise you.



# MAKE YOUR KAROQ, YOUR KAROQ

To give your KAROQ a truly personal touch, pick from the following option packages and individual technology items.

## SAY HELLO TO COMFORT

The car will make sure that you stay well-rested during the whole journey.

### CONVENIENCE PACKAGE

Stepping in is a step up. You will be sitting comfortably every time you head off with the addition of the electrically controlled driver's seat with memory function.



### WINTER PACKAGE\* AND WINTER PACKAGE PLUS

Keep warm and cosy regardless of the weather with heated front seats, heated windscreen washer nozzles and headlight washers. Upgrade to the Plus version to add heated outer rear seats and a heated windscreen\*\*.



Models shown are not UK specification. Some of the equipment shown is optional, please check options price lists for trim availability. \* Only available with 2-spoke leather steering wheel for SE Drive. \*\* Heated windscreen not available on 1.0 TSI 110PS engines.

### PERFORMANCE PACKAGE

Enjoy the high performance of your car in maximum comfort and safety. The Dynamic Chassis Control (DCC) continuously evaluates and responds to various driving situations (braking, acceleration, turning) and adapts the steering characteristics. As part of the infotainment menu, it allows you to select one of three modes according to your specific requirements: Comfort, Normal or Sport. This package also includes aluminium pedals that transform the feel of the car.





## EYE-CATCHING

If you are looking to express yourself, these packages are the perfect choice.

### DESIGN PACKAGE

Accentuate the details with window surrounding aluminium bars and chrome roof rails that perfectly follow the contours of the vehicle. The aluminium door sill covers with KAROQ inscription, which welcome you when entering the vehicle, are an original feature with aesthetic as well as practical functions.

## LIGHT PACKAGE



### LED MATRIX HEADLIGHTS

The star feature of this generous package - the full LED Matrix headlights - allow you to use the high beams continuously, without blinding other drivers. These headlights are not only a striking design element, but also, and most importantly, they are a safety feature.



### MATRIX BEAM

Using a windscreen camera, the matrix beam function responds to the traffic situation and turns off only some segments of the light. Other segments are turned on and illuminate the road. In addition, thanks to this function, you are not blinded by reflective materials on traffic signs, for example. The matrix beam function also uses information from the navigation system, so the high beams will only turn on when you are out of a built-up area.



### AMBIENT LIGHTING

What's more, the package also includes interior ambient lighting that lets you set the scene with 10 different colour options, front and rear footwell lights and front reading lights.

Models shown are not UK specification. Some of the equipment shown is optional, please check options price lists for trim availability.





# ALWAYS CONNECTED

Your gateway to a world of unlimited communication possibilities.



## AMUNDSEN PLUS PACKAGE

Alongside the standard Amundsen 8" infotainment display, the upgrade to Plus package includes a virtual cockpit, which can display onboard computer specifications in combination with other information and offers five layouts with specific graphics controlled via the View button on the steering wheel.

The bundle also includes integrated WLAN, web radio and a wireless charging feature so you can charge your phone on the go.



## COLUMBUS PACKAGE

Take the in-car infotainment to the next level by upgrading to the Columbus package. It features an attractive 9.2" glass touchscreen infotainment display accompanied by a virtual cockpit.

Wireless charging, built-in WLAN and web radio are also included in the bundle.



Models shown are not UK specification. Some of the equipment shown is optional, please check options price lists for trim availability.

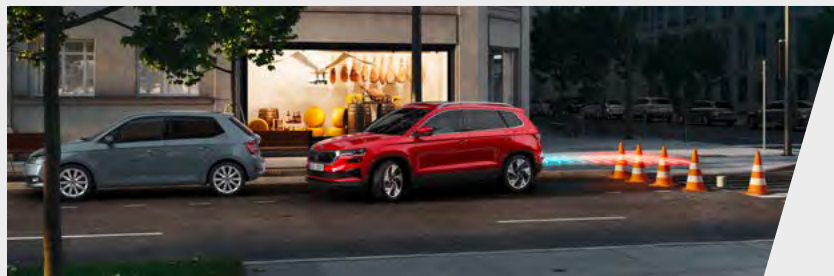




# SAFE HAPPENS

Embark on any adventure with complete confidence - with these smart assistance systems you'll be safer at every turn.

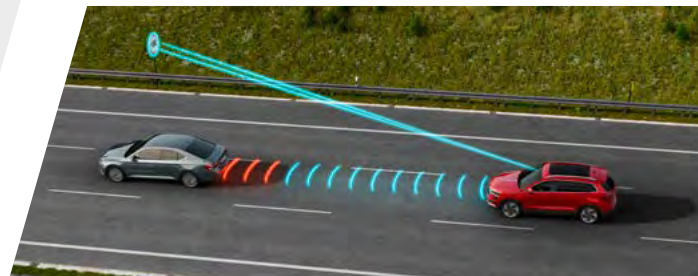
## PARKING PACKAGE



This package includes front and rear parking sensors to alert you of any obstacles at speeds of up to 8 km/h, meanwhile the rear view camera makes light work of reversing or manoeuvring tight spaces.

Models shown are not UK specification. Some of the equipment shown is optional, please check options price lists for trim availability.

## TRAVEL ASSIST PACKAGE



To make travelling safer with the Travel Assist Package. The adaptive cruise control uses a radar device in the front grille, which operates at up to speeds of 210 km/h, to maintain a safe distance from vehicles in front of you. The traffic jam assist controls the engine, brakes, and steering, to make the vehicle pull away, brake, and turn to copy the movement of the surrounding vehicles (at speeds of up to 60 km/h). The lane assist system is capable of keeping the car



in the middle of the lane and alert the driver in case of deviation. The Traffic Sign Recognition uses the camera in rear view mirror to scan the traffic signs on the current stretch of the road and notify the driver. The system is able to identify signs on both the left and right side, as well as above the road. Moreover, it is also able to identify variable traffic signs (electronic information boards). A handy USB-C port for the rear view mirror is also included.





# ON THE ROAD AND P11D PRICING

KAROQ SE DRIVE	VED Band	Insurance group (50)	Recommended Basic	VAT	RRP	Recommended OTR*	BiK 2022/23*	P11D value
1.0 TSI 110PS	H	12E	£21,133.33	£4,226.67	£25,360.00	£26,255.00	31%	£25,970.00
1.5 TSI 150PS ACT	H	18E	£22,258.33	£4,451.67	£26,710.00	£27,605.00	32%	£27,320.00
1.5 TSI 150PS DSG ACT	H	18E	£23,466.67	£4,693.33	£28,160.00	£29,055.00	32%	£28,770.00
2.0 TDI 116PS SCR	G	15E	£23,283.33	£4,656.67	£27,940.00	£28,795.00	30%	£28,550.00
2.0 TDI 116PS DSG SCR	G	13E	£24,487.50	£4,897.50	£29,385.00	£30,240.00	30%	£29,995.00
2.0 TDI 150PS SCR	G	19E	£24,162.50	£4,832.50	£28,995.00	£29,850.00	30%	£29,605.00
<b>KAROQ SE L</b>								
1.0 TSI 110PS	H	12E	£22,662.50	£4,532.50	£27,195.00	£28,090.00	33%	£27,805.00
1.5 TSI 150PS ACT	H	19E	£23,791.67	£4,758.33	£28,550.00	£29,445.00	34%	£29,160.00
1.5 TSI 150PS DSG ACT	H	18E	£25,045.83	£5,009.17	£30,055.00	£30,950.00	34%	£30,665.00
2.0 TDI 116PS SCR	H	15E	£24,808.33	£4,961.67	£29,770.00	£30,665.00	31%	£30,380.00
2.0 TDI 116PS DSG SCR	H	14E	£26,066.67	£5,213.33	£31,280.00	£32,175.00	31%	£31,890.00
2.0 TDI 150PS SCR	H	19E	£25,695.83	£5,139.17	£30,835.00	£31,730.00	31%	£31,445.00
2.0 TDI 150PS DSG 4x4 SCR	H	20E	£28,487.50	£5,697.50	£34,185.00	£35,080.00	35%	£34,795.00
<b>KAROQ SPORTLINE</b>								
1.5 TSI 150PS ACT	H	20E	£26,395.83	£5,279.17	£31,675.00	£32,570.00	33%	£32,285.00
1.5 TSI 150PS DSG ACT	H	19E	£27,604.17	£5,520.83	£33,125.00	£34,020.00	33%	£33,735.00
2.0 TSI 190PS DSG 4x4	J	25E	£30,095.83	£6,019.17	£36,115.00	£37,725.00	37%	£36,725.00
2.0 TDI 150PS SCR	H	20E	£28,295.83	£5,659.17	£33,955.00	£34,850.00	31%	£34,565.00
2.0 TDI 150PS DSG 4x4 SCR	I	21E	£31,054.17	£6,210.83	£37,265.00	£38,515.00	36%	£37,875.00

Pricing valid as of 20th April 2022.

\* The recommended 'on the road' prices and any VED charges quoted reflect the VED charges which apply to vehicles registered after 1 April 2022. Choice of wheels and other options may affect fuel consumption, BiK and emissions data (which may affect the amount of VED payable and therefore the ROTR price). The price and charges you pay may differ from any prices or charges displayed or quoted before 1 April 2022.

From 6 April 2020, the official CO<sub>2</sub> emissions values used to calculate benefit in kind (BIK) charges for fleet channels will change for passenger car registrations in the UK. This is due to a change in the method of testing. The BIK charges quoted reflect the charges which apply to vehicles registered after 6 April 2020. These charges may differ from any charges displayed or quoted before 6 April 2020.

Information regarding tyre technical specifications can be found by visiting the ŠKODA car configurator [here](#).





# OPTIONAL EQUIPMENT

	SE Drive	SE L	SportLine	Basic exc VAT	RRP inc VAT
<b>WHEELS AND SUSPENSION</b>					
<b>17" Scutus anthracite grey alloy wheels</b> with matt black Aero covers. 255/55 R17 94V super-low rolling resistance tyres with 2nd generation polymer coating.	O	-	-	£195.83	£235.00
<b>18" Miran black alloy wheels.</b> 215/50 R18 92W low rolling resistance tyres.	O	●	-	£733.33	£880.00
<b>19" Sagitarius silver alloy wheels</b> with glossy black Aero covers and disk brakes in front. 225/40 R19 93W low rolling resistance tyres.	-	O	-	£395.83	£475.00
<b>Tow bar preparation.</b>	O	O	O	£187.50	£225.00
<b>Removable tow bar with adaptor.</b>	O	O	O	£908.33	£1,090.00
<b>Steel space-saving spare wheel</b> – 125/70 R18. <i>Not available in combination with Temporary steel space saver spare wheel – 215/60 R16.</i>	O	O	O	£141.67	£170.00
<b>Temporary steel space saver spare wheel</b> – 215/60 R16. <i>Not available on 4x4 engines. Not available in combination with Steel space-saving spare wheel – 125/70 R18.</i>	O	O	O	£141.67	£170.00
<b>PAINT</b>					
<b>Solid colours.</b>	●	●	-	FOC	FOC
<b>Special colours.</b>	O	O	●	£550.00	£660.00
<b>Metallic colours.</b>	O	O	●	£550.00	£660.00
<b>Pearl effect colours.</b>	O	O	●	£550.00	£660.00
<b>Exclusive Colours.</b>	O	O	-	£870.83	£1,045.00
	-	-	O	£325.00	£390.00
<b>EXTERIOR</b>					
<b>Panoramic glass roof.</b> <i>Not available with an overhead storage compartment.</i>	O	O	●	£1,075.00	£1,290.00
<b>Front mud flaps</b> (for cars with plastic wheel arches).	O	O	-	£56.67	£68.00
<b>Rear mud flaps.</b>	O	O	O	£56.67	£68.00
<b>Running boards</b> (retailer fit).	O	O	O	£995.83	£1,195.00
<b>Rough road package</b> with front underbody guard and underbody stone guard.	O	O	O	£166.67	£200.00
<b>INTERIOR</b>					
<b>Microsuede/Leather upholstery in black.</b> <i>Without backrest release for front seats. Not available in combination with Convenience Package on Sportline.</i>	O	●	-	£1,308.33	£1,570.00
	-	-	O	£983.33	£1,180.00
<b>Leather upholstery in black.</b> <i>On SE L, Beige Leather Upholstery available in combination with Light Package.</i>	-	O	-	£245.83	£295.00
	-	-	O	£1,229.17	£1,475.00
<b>ECO Upholstery Package with Alcantara seat trim covers, decorative inserts and an ashtray.</b> <i>Only available in combination with Light Package.</i>	-	O	-	FOC	FOC
<b>ECO Upholstery Package with Alcantara seat trim covers and decorative inserts.</b> <i>Only available in combination with Light Package.</i>	-	O	-	FOC	FOC
<b>2-spoke heated leather multi-function steering wheel (manual only)</b> <i>Only available with Winter Package or Winter Package Plus.</i>	O	-	-	£100.00	£120.00
<b>2-spoke heated leather multi-function steering wheel (with paddles for DSG).</b> <i>Only available with Winter Package or Winter Package Plus.</i>	O	-	-	£170.83	£205.00
<b>VarioFlex seats</b> with standard rear seat release.	O	●	-	£620.83	£745.00
<b>3-zone climate control</b> with rear air conditioning control panel.	O	O	O	£262.50	£315.00
<b>Partition net screen.</b>	O	O	O	£158.33	£190.00
<b>Smoker's package.</b>	O	O	O	£20.83	£25.00

O Optional ● Standard – Not available

Please note: Some combinations of options can cause the vehicle to be unbuildable.

Please speak to your local ŠKODA Retailer or visit [skoda.co.uk](http://skoda.co.uk) to configure your required specification. Information regarding tyre technical specifications can be found by visiting the ŠKODA car configurator [here](#).





# OPTIONAL EQUIPMENT – CONTINUED

	SE Drive	SE L	SportLine	Basic exc VAT	RRP inc VAT
<b>PACKAGES</b>					
<b>Safety Package</b>					
<b>Safety Package.</b> Front and rear curtain side airbags. Crew protect assist.	O	O	O	£400.00	£480.00
<b>Convenience Package</b>					
<b>Convenience Package.</b> Electrically adjustable front seats with memory feature. Electrically adjustable, heated and foldable door mirrors with auto-dimming feature. <i>Without the storage compartment and umbrella under the passenger seat and without folding table on front seat backrest (SE L only).</i> <i>Only available with Leather Upholstery on Sportline. Only available with Light Package on SE L.</i>	-	O	O	£1,062.50	£1,275.00
<b>Parking Package</b>					
<b>Parking Package.</b> Front and rear parking sensors. Rear view camera.	O	●	●	£587.50	£705.00
<b>Travel Assist Packages</b>					
<b>Travel Assist Package.</b> Adaptive Cruise Control (ACC) with collision predictive function, front assist and speed limiter. Lane assist and traffic jam assist. Traffic sign recognition. USB-C port for rear view mirror (charging only).	O	O	O	£791.67	£950.00
<b>Travel Assist Package Plus.</b> Adaptive Cruise Control (ACC) with collision predictive function, front assist and speed limiter. Lane assist and traffic jam assist. Traffic sign recognition. Blind spot detection. USB-C port for rear view mirror (charging only).	-	-	O	£1,245.83	£1,495.00
<b>Light Package</b>					
<b>Light Package.</b> Full LED Matrix headlights. Dynamic headlight range control with cornering light. Front fog lights with poor weather function. Ambient interior lighting. Front and rear footwell interior light. Passenger and driver reading lights.	-	O	●	£1,629.17	£1,955.00
<b>Design Package</b>					
<b>Design Package.</b> Chrome roof rails. Chrome styling package. Decorative door sills with KAROQ badging.	O	●	-	£479.17	£575.00

O Optional ● Standard – Not available

Please note: Some combinations of options can cause the vehicle to be unbuildable.

Please speak to your local ŠKODA Retailer or visit [skoda.co.uk](https://www.skoda.co.uk) to configure your required specification. Information regarding tyre technical specifications can be found by visiting the ŠKODA car configurator [here](#).





# OPTIONAL EQUIPMENT – CONTINUED

	SE Drive	SE L	SportLine	Basic exc VAT	RRP inc VAT
<b>PACKAGES - continued</b>					
<b>Winter Packages</b>					
<b>Winter Package.</b> Heated front seats. Heated windscreen washer nozzles. Headlight washers. <i>Only available with 2-spoke heated leather steering wheel.</i>	O	●	●	£266.67	£320.00
<b>Winter Package Plus.</b> Heated front and rear seats. Heated windscreen. Heated windscreen washer nozzles. Headlight washers.	O*	-	-	£620.83	£745.00
<small>* For SE Drive 1.0 TSI 110PS the option is priced at RRP inc VAT £470.00 (Basic exc VAT £391.67) as Heated windscreen not available. ** For SE L 1.0 TSI 110PS the option is priced at RRP inc VAT £150.00 (Basic exc VAT £125.00) as Heated windscreen not available. <i>Only available with 2-spoke heated leather steering wheel for SE Drive.</i></small>	-	O**	O	£354.17	£425.00
<b>Technology Packages</b>					
<b>Amundsen Package Plus.</b> Amundsen navigation system with 8" touchscreen display and integrated WLAN and web radio. Virtual cockpit. Wireless charging (without wireless aerial connection).	-	O	O	£500.00	£600.00
<b>Columbus Package.</b> Columbus navigation system with 9.2" touchscreen display and integrated WLAN and web radio. Virtual cockpit. Wireless charging (without wireless aerial connection).	-	O	O	£1,166.67	£1,400.00
<b>Performance Package</b>					
<b>Performance Package.</b> Driving Mode select with Off-Road function for 4x4 engines and DCC (Dynamic chassis control). Dynamic steering.	O	-	-	£920.83	£1,105.00
Aluminum Pedals.	-	O	-	£900.00	£1,080.00
Front and rear shock absorption. <i>Only available on 150PS engines for SE Drive and SE L trims, available for all engines on Sportline.</i>	-	-	O	£829.17	£995.00
<b>DRIVER ASSISTANCE</b>					
<b>Adaptive Cruise Control (ACC).</b> <i>Not available in combination with Travel Assist Package.</i>	O	O	O	£408.33	£490.00
<b>Electrically operated boot with virtual pedal</b> <i>Only available with Kessy - Keyless entry and start system with SAFE system for SE Drive.</i>	O	O	●	£612.50	£735.00
<b>KESSY – Keyless entry and start/ stop system with SAFE system.</b>	O	-	-	£187.50	£225.00
<b>Third Key.</b>	O	O	O	£29.17	£35.00

O Optional ● Standard – Not available

Please note: Some combinations of options can cause the vehicle to be unbuildable.

Please speak to your local ŠKODA Retailer or visit [skoda.co.uk](http://skoda.co.uk) to configure your required specification. Information regarding tyre technical specifications can be found by visiting the ŠKODA car configurator [here](#).





# OPTIONAL EQUIPMENT – CONTINUED

	SE Drive	SE L	SportLine	Basic exc VAT	RRP inc VAT
<b>ŠKODA AFTERSALES ACCESSORIES</b>					
All-weather protective interior mats.	<input type="radio"/>	<input type="radio"/>	<input type="radio"/>	£72.50	£87.00
Roof bars.	<input type="radio"/>	<input type="radio"/>	<input type="radio"/>	£172.50	£207.00
SKODA roof box 380l – black. <i>Only available in combination with Roof bars.</i>	<input type="radio"/>	<input type="radio"/>	<input type="radio"/>	£357.50	£429.00
Towbar rack for 3 bicycles.	<input type="radio"/>	<input type="radio"/>	<input type="radio"/>	£504.17	£605.00
Bicycle holder – stainless steel.	<input type="radio"/>	<input type="radio"/>	<input type="radio"/>	£104.17	£125.00
Ski and snowboard rack.	<input type="radio"/>	<input type="radio"/>	<input type="radio"/>	£115.83	£139.00
Jump starter powerbank.	<input type="radio"/>	<input type="radio"/>	<input type="radio"/>	£150.00	£180.00
<b>ŠKODA AFTERSALES ACCESSORIES</b>					
Extended warranty 4 years or 80,000 miles.	<input type="radio"/>	<input type="radio"/>	<input type="radio"/>	£250.00	£300.00
Extended warranty 4 years or 100,000 miles.	<input type="radio"/>	<input type="radio"/>	<input type="radio"/>	£283.33	£340.00
Extended warranty 5 years or 100,000 miles.	<input type="radio"/>	<input type="radio"/>	<input type="radio"/>	£525.00	£630.00
Service plan (first two services).	<input type="radio"/>	<input type="radio"/>	<input type="radio"/>	£380.00	£456.00

Optional    Standard   – Not available

Please note: Some combinations of options can cause the vehicle to be unbuildable.

Please speak to your local ŠKODA Retailer or visit [skoda.co.uk](http://skoda.co.uk) to configure your required specification. Information regarding tyre technical specifications can be found by visiting the ŠKODA car configurator [here](#).





# VED (VEHICLE EXCISE DUTY) FROM 1ST APRIL 2022

VED BAND*	CO <sub>2</sub> (g/km)	Petrol car/diesel car* (tax class 48 and 49) 12 months	Diesel car** (tax class 49) 12 months	Alternative fuel car (tax class 59) 12 months
A	0	£0	£0	£0
B	1-50	£10	£25	£0
C	51-75	£25	£120	£15
D	76-90	£120	£150	£110
E	91-100	£150	£170	£140
F	101-110	£170	£190	£160
G	111-130	£190	£230	£180
H	131-150	£230	£585	£220
I	151-170	£585	£945	£575
J	171-190	£945	£1,420	£935
K	191-225	£1,420	£2,015	£1,410
L	226-255	£2,015	£2,365	£2,005
M	over 255	£2,365	£2,365	£2,355

## OTR (On The Road)

Recommended 'On The Road' prices include delivery, 12 months Road Fund Licence, DVLA First Registration Fee and apply to the UK only.

## VED (Vehicle Excise Duty)

All vehicles will be subject to Vehicle Excise Duty based on the fuel type of the vehicle and its carbon dioxide (CO<sub>2</sub>) emissions level, measured in grams per kilometre (g/km). Due to changes in vehicle emissions data, CO<sub>2</sub> figures may differ on these vehicles if taken from current ŠKODA UK stock.

Vehicle Excise Duty (VED) is correct at time of publication, but this may alter to reflect any change in the applicable VED rate.

\* This rate applies to diesel cars tested to real driving emissions step two (RDE2) standards

\*\* This rate applies to diesel vehicles that do not meet the real driving emissions step two (RDE2) standards.

Note: Vehicles with a list price exceeding £40,000 (including factory installed options, delivery charge, number plates and VAT) will pay an additional £355 plus the standard rate VED from year 2 to, and including, year 6. After the 6th year only the standard rate VED will apply.

# BiK CALCULATION EXAMPLE

Based on  
**KAROQ SE DRIVE 1.0 TSI 110PS**

<b>P11D value</b>		<b>£25,970.00</b>
<b>Company car BiK tax based on CO<sub>2</sub> emission level</b>		<b>31%</b>
<b>Taxable BiK (for 2022/2023 tax year):</b>	31% of £25,970.00	<b>£8,050.70</b>
<b>Annual company car tax (2022/23)</b>		
<b>20% income tax</b>	20% of £8,050.70	<b>£1,610.14</b>
<b>40% income tax</b>	40% of £8,050.70	<b>£3,220.28</b>
<b>Monthly company car tax (2022/23)</b>		
<b>20% income tax</b>	£1,610.14 divided by 12 months	<b>£134.18</b>
<b>40% income tax</b>	£3,220.28 divided by 12 months	<b>£268.36</b>

Company car tax is based on the vehicle's carbon dioxide (CO<sub>2</sub>) emissions. The higher the emissions, the higher its tax liability. When a company car is made available for private use a 'Benefit in Kind' value is calculated for tax purposes. The table above will help you calculate your tax liability.

## P11D (expenses and benefits)

The P11D value is calculated by taking the On The Road (OTR) price for the vehicle, less the Road Fund Licence (RFL) and First Registration Fee (FRF).

## BiK (Benefit in Kind)

The BiK percentage value is based on the CO<sub>2</sub> emissions of the vehicle for the current tax year 2022/2023.





# TECHNICAL SPECIFICATION

	CO <sub>2</sub> emissions WLTP - Combined* - (g/km)	Standard Euro Emissions	AdBlue tank capacity - Litres	Transmission	Acceleration 0 - 62 mph - secs	Engine Torque - Nm	Max Speed - MPH (Km/h)	WLTP* - Combined mpg (l/100km)
SE Drive 1.0 TSI 110 PS	132 - 146	EU6d RDE Step 2 Compliant	N/A	6 Speed Manual	11.2	200	118 (191)	48.6 (5.8) - 44.0 (6.4)
SE Drive 1.5 TSI 150 PS ACT	138 - 151	EU6d RDE Step 2 Compliant	N/A	6 Speed Manual	8.9	250	131 (211)	46.3 (6.1) - 42.3 (6.7)
SE Drive 1.5 TSI 150 PS DSG ACT	139 - 150	EU6d RDE Step 2 Compliant	N/A	7 Speed Automatic	9.0	250	130 (210)	45.9 (6.2) - 42.5 (6.6)
SE Drive 2.0 TDI 116 PS SCR	125 - 136	EU6d RDE Step 2 Compliant	14.5	6 Speed Manual	10.6	300	119 (193)	59.4 (4.8) - 54.4 (5.2)
SE Drive 2.0 TDI 116 PS DSG SCR	129 - 138	EU6d RDE Step 2 Compliant	14.5	7 Speed Automatic	11.0	250	119 (192)	57.3 (4.9) - 53.8 (5.2)
SE Drive 2.0 TDI 150 PS SCR	128 - 137	EU6d RDE Step 2 Compliant	14.5	6 Speed Manual	8.9	340	130 (210)	58.0 (4.9) - 53.9 (5.2)
SE L 1.0 TSI 110 PS	140 - 145	EU6d RDE Step 2 Compliant	N/A	6 Speed Manual	11.2	200	118 (191)	45.8 (6.2) - 44.2 (6.4)
SE L 1.5 TSI 150 PS ACT	145 - 150	EU6d RDE Step 2 Compliant	N/A	6 Speed Manual	8.9	250	131 (211)	43.9 (6.4) - 42.5 (6.7)
SE L 1.5 TSI 150 PS DSG ACT	145 - 149	EU6d RDE Step 2 Compliant	N/A	7 Speed Automatic	9.0	250	130 (210)	44.1 (6.4) - 42.7 (6.6)
SE L 2.0 TDI 116 PS SCR	132 - 136	EU6d RDE Step 2 Compliant	14.5	6 Speed Manual	10.6	300	119 (193)	56.3 (5.0) - 54.6 (5.2)
SE L 2.0 TDI 116 PS DSG SCR	134 - 137	EU6d RDE Step 2 Compliant	14.5	7 Speed Automatic	11.0	250	119 (192)	55.3 (5.1) - 54.1 (5.2)
SE L 2.0 TDI 150 PS SCR	133 - 137	EU6d RDE Step 2 Compliant	14.5	6 Speed Manual	8.9	340	130 (210)	55.9 (5.1) - 54.2 (5.2)
SE L 2.0 TDI 150 PS DSG 4x4 SCR	150 - 155	EU6d RDE Step 2 Compliant	13.15	7 Speed Automatic	8.8	360	126 (204)	49.4 (5.7) - 47.9 (5.9)
SportLine 1.5 TSI 150 PS ACT	142 - 146	EU6d RDE Step 2 Compliant	N/A	6 Speed Manual	8.9	250	131 (211)	44.7 (6.3) - 43.7 (6.5)
SportLine 1.5 TSI 150 PS DSG ACT	143 - 146	EU6d RDE Step 2 Compliant	N/A	7 Speed Automatic	9.0	250	130 (210)	44.7 (6.3) - 43.7 (6.5)
SportLine 2.0 TSI 190 PS DSG 4x4	178 - 181	EU6d RDE Step 2 Compliant	N/A	7 Speed Automatic	7.0	320	137 (221)	36.0 (7.8) - 35.4 (8.0)
SportLine 2.0 TDI 150 PS SCR	131 - 134	EU6d RDE Step 2 Compliant	14.5	6 Speed Manual	8.9	340	130 (210)	56.5 (5.0) - 55.3 (5.1)
SportLine 2.0 TDI 150 PS DSG 4x4 SCR	157 - 160	EU6d RDE Step 2 Compliant	13.15	7 Speed Automatic	8.8	360	126 (204)	47.3 (6.0) - 46.2 (6.1)

\* Figures shown are for comparability purposes; only compare fuel consumption and CO<sub>2</sub> figures with other vehicles tested to the same technical procedures. These figures may not reflect real life driving results, which will depend upon a number of factors including the accessories fitted (post-registration), variations in weather, driving styles and vehicle load. Data correct at 1st June 2022. Choice of wheels and other options may affect fuel consumption and emissions data. For more information, please see [skoda.co.uk/owners/wltp-info](https://www.skoda.co.uk/owners/wltp-info) or consult your retailer.





# TECHNICAL SPECIFICATION – CONTINUED

	Tyre Size - front and rear	Gross Vehicle Weight - kg	Max. Towing Weight - Braked 12% / 8% gradient - kg**	Max. Towing Weight - Unbraked - kg**	Minimum Kerbweight (with driver) - kg	Minimum Kerbweight (without driver) - kg	Nose weight - kg
SE Drive 1.0 TSI 110 PS	215/55 R17 super-low rolling resistance	1,890	1,200 / 1,400	680	1,365 - 1,578	1,290 - 1,503	90
SE Drive 1.5 TSI 150 PS ACT	215/55 R17 super-low rolling resistance	1,923	1,500 / 1,700	700	1,410 - 1,623	1,335 - 1,548	90
SE Drive 1.5 TSI 150 PS DSG ACT	215/55 R17 super-low rolling resistance	1,930	1,500 / 1,700	700	1,417 - 1,630	1,342 - 1,555	90
SE Drive 2.0 TDI 116 PS SCR	215/55 R17 super-low rolling resistance	1,998	1,500 / 1,700	740	1,485 - 1,698	1,410 - 1,623	90
SE Drive 2.0 TDI 116 PS DSG SCR	215/55 R17 super-low rolling resistance	2,005	1,500 / 1,700	740	1,492 - 1,705	1,417 - 1,630	90
SE Drive 2.0 TDI 150 PS SCR	215/55 R17 super-low rolling resistance	1,999	1,800 / 1,800	740	1,486 - 1,699	1,411 - 1,624	90
SE L 1.0 TSI 110 PS	215/50 R18 low rolling resistance	1,890	1,200 / 1,400	680	1,369 - 1,575	1,294 - 1,500	90
SE L 1.5 TSI 150 PS ACT	215/50 R18 low rolling resistance	1,928	1,500 / 1,700	710	1,422 - 1,628	1,347 - 1,553	90
SE L 1.5 TSI 150 PS DSG ACT	215/50 R18 low rolling resistance	1,935	1,500 / 1,700	710	1,429 - 1,635	1,354 - 1,560	90
SE L 2.0 TDI 116 PS SCR	215/50 R18 low rolling resistance	2,004	1,500 / 1,700	740	1,498 - 1,704	1,423 - 1,629	90
SE L 2.0 TDI 116 PS DSG SCR	215/50 R18 low rolling resistance	2,011	1,500 / 1,700	750	1,505 - 1,711	1,430 - 1,636	90
SE L 2.0 TDI 150 PS SCR	215/50 R18 low rolling resistance	2,005	1,800 / 1,800	740	1,499 - 1,705	1,424 - 1,630	90
SE L 2.0 TDI 150 PS DSG 4x4 SCR	225/50 R18 super-low rolling resistance	2,240	2,100 / 2,100	750	1,655 - 1,832	1,580 - 1,757	90
SportLine 1.5 TSI 150 PS ACT	215/50 R18 low rolling resistance	1,920	1,500 / 1,700	710	1,422 - 1,601	1,347 - 1,526	90
SportLine 1.5 TSI 150 PS DSG ACT	215/50 R18 low rolling resistance	1,930	1,500 / 1,700	710	1,429 - 1,608	1,354 - 1,533	90
SportLine 2.0 TSI 190 PS DSG 4x4	225/50 R18 super-low rolling resistance	2,160	1,900 / 1,900	750	1,596 - 1,693	1,521 - 1,618	90
SportLine 2.0 TDI 150 PS SCR	215/50 R18 low rolling resistance	2,000	1,800 / 1,800	740	1,499 - 1,678	1,424 - 1,603	90
SportLine 2.0 TDI 150 PS DSG 4x4 SCR	225/50 R18 super-low rolling resistance	2,240	2,100 / 2,100	750	1,656 - 1,805	1,581 - 1,730	90

Information regarding tyre technical specifications can be found by visiting the ŠKODA car configurator [here](#).

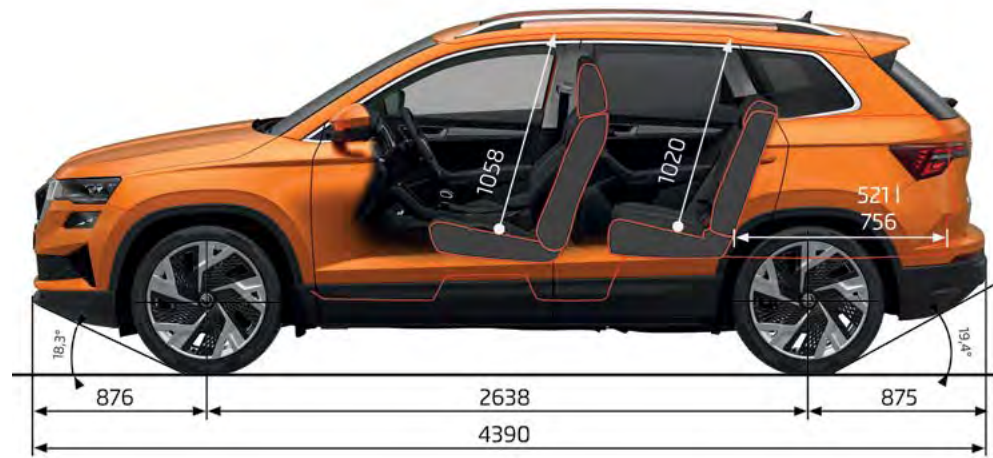
\*\* Please note, if a tow bar or tow bar preparation is not fitted on the car, the VIN plate may not show any towing weights and the car will never be eligible for towing.

As such it may not be possible to retrospectively fit a tow bar if the car is not fitted with tow bar preparation at Factory. Please speak to your Retailer to confirm the exact towing eligibility.



# TECHNICAL SPECIFICATION – CONTINUED

## DIMENSIONS



	Height - mm	Height (incl. roof rails) - mm	Length - mm	Wheelbase - mm
SE Drive/ SE L 4x2	1,603	-	4,390	2,638
SE L 4x4	1,608	-	4,390	2,630
Sportline 4x4	1,612	-	4,384	2,630



	Luggage capacity (seats down/ seats removed) - litres	Luggage Capacity (Seats up) - litres
Standard Seating	1,630	521
VarioFlex Seating	1,605 - 1,810	588



# ADDITIONAL INFORMATION

## ŠKODA Financial Services

ŠKODA Financial Services offer a wide range of finance, insurance and servicing packages designed to fit your needs.

We specialise in providing simple and convenient funding options for drivers. The Solutions Personal Contract Plan offers a flexible, fixed-rate plan designed around your budget, by deferring a proportion of the car's value until the end of the agreement. This means a significantly lower monthly repayment compared to a loan or hire purchase agreement, so you can have more car for your money or just reduce the size of your repayments.

You choose the size of your deposit, from as little as one monthly payment, and a repayment period that suits you. At the end of the term, there are three options:

1. Part exchange your car for a new ŠKODA on a Solutions contract.
2. Pay the optional final payment to own the car.
3. Return the car (subject to terms and conditions).

ŠKODA Financial Services also offers hire purchase, contract hire and service and maintenance plans. Speak to your ŠKODA Retailer for your personalised quotation today.

T&Cs apply, ŠKODA Financial Services.

## ŠKODA Car Insurance

### Complimentary ŠKODA Drive Away Insurance

Every new and Approved Used ŠKODA comes with five days' complimentary insurance cover, getting you on the road quickly and easily so you can enjoy the things that matter. ŠKODA Drive Away Insurance is designed specifically for your ŠKODA and guarantees that your car will be repaired in a ŠKODA Approved Repairer. Speak to your ŠKODA Retailer for more details.

Subject to eligibility.

We will also provide you with an annual quote, with no additional questions asked, so you can continue to enjoy all the benefits ŠKODA Car Insurance offers.

Read on for more details.

### ŠKODA Car Insurance

ŠKODA Car Insurance offers quality service and support when you need it most, with a policy tailored specifically for your ŠKODA. Just as you'd expect from ŠKODA, our annual car insurance provides comprehensive cover, with lots of benefits included at no extra cost.

Insure your car with ŠKODA and relax knowing we only use ŠKODA trained technicians, who know your car inside out, and ŠKODA genuine parts\*, giving you the peace of mind that your ŠKODA will be repaired to the same high standards as before and to original manufacturer specifications.

\*Excludes windscreen claims.

There's a lot to like about being a ŠKODA driver.

Get a quote or find out more at [insurewithskoda.co.uk/car-insurance](https://www.insurewithskoda.co.uk/car-insurance)

Alternatively, call us on **0345 246 9091**. Lines are open 8am-8pm Monday to Friday and 9am-5pm Saturday.

ŠKODA Car Insurance is underwritten by U K Insurance Limited. Calls may be recorded

ŠKODA Financial Services is a trading name of Volkswagen Financial Services (UK) Limited ("VWFS UK"), registered in England and Wales No.2835230 (registered office: Brunswick Court, Yeomans Drive, Blakelands, Milton Keynes MK14 5LR). Until 31st October 2022 Volkswagen Insurance Service (Great Britain) Ltd operates as an appointed representative of VWFS UK, after this date all references to Volkswagen Insurance Service (Great Britain) Ltd should instead be read as VWFS UK. VWFS UK is authorised and regulated by the Financial Conduct Authority. VWFS UK and U K Insurance Limited are not part of the same corporate group.

## ŠKODA Gap Insurance

### What is ŠKODA Gap Insurance?

If your ŠKODA is written off, your motor insurer will usually pay out based on the current market value of your vehicle. This could be a lot less than its original value and therefore may leave you with an unexpected shortfall.

Our Gap Insurance helps to cover the gap left by this shortfall to get you back in a new ŠKODA or help pay off any outstanding finance, lease or hire agreement.

There are two options for you to choose from:

### ŠKODA Gap Insurance

This pays the difference between the write off settlement from your motor insurer and the price you paid for your ŠKODA or the outstanding balance payable to the finance company, whichever is the greater amount.

If your vehicle is leased or hired, ŠKODA Gap Insurance will cover the difference between the write off settlement from your motor insurer and the early termination charge. This includes any rentals paid in advance as a deposit up to £2,000.

Cover lasts for 36 months and the maximum claim limit is based on your vehicle purchase price.

### ŠKODA Gap Insurance Plus

In addition to all the benefits of ŠKODA Gap Insurance, the ŠKODA Gap Insurance Plus policy includes a 12-month fixed benefit. This will start once your 36-month Gap Insurance cover ends.

If your vehicle is written off during the additional 12-month fixed benefit period of insurance, ŠKODA Gap Insurance will pay a fixed sum of £2,500.

### Why choose us?

ŠKODA Gap Insurance gives you the financial protection your ŠKODA deserves. So you can relax knowing that if you need to make a claim, we could help you get back into a replacement ŠKODA.

To discover the additional benefits and full terms and conditions, please refer to the Cover Booklet.

For more information about ŠKODA Gap Insurance, please speak to your nearest participating ŠKODA Retailer or go online [www.insurewithskoda.co.uk/gap-insurance](https://www.insurewithskoda.co.uk/gap-insurance)

ŠKODA Gap Insurance from ŠKODA Financial Services is administered by Car Care Plan Limited and underwritten by Motors Insurance Company Limited.

ŠKODA Financial Services is a trading name of Volkswagen Financial Services (UK) Limited ("VWFS UK"), registered in England and Wales No.2835230 (registered office: Brunswick Court, Yeomans Drive, Blakelands, Milton Keynes MK14 5LR). VWFS UK is not part of the same corporate group as Car Care Plan Limited and Motors Insurance Company Limited.

## Service and maintenance

Our range of servicing and maintenance plans will help to keep your ŠKODA in prime condition. Plus, the price is fixed so you won't be caught out by any unbudgeted costs.

All our service plans use genuine ŠKODA approved parts and trained technicians so you know your car is in the hands of experts. Parts and labour also come with two years warranty too.

### Service Plan for cars under a year old

This covers your first two services for one payment of just £396 or 24 monthly payments of £16.50. The service plan includes a maximum of one oil service and one oil and inspection service with pollen filter change. The vehicle service regime affects the entitlement service plan if you choose to purchase this.

Our service plans are designed for customers that travel 10,000 miles or less per year. If you travel over 10,000 miles per year, or would prefer to add maintenance or tyres, then speak to your ŠKODA Retailer to create a more tailored service plan.

All cars must be set to time and distance servicing. Exclusions and terms and conditions apply. Offer is available to retail customers only from participating ŠKODA Retailers. Offers may be varied or withdrawn at any time. Freepost ŠKODA Financial Services. Pricing effective from 1st August 2020.

ŠKODA Financial Services is a trading name of Volkswagen Financial Services (UK) Limited, Brunswick Court, Yeomans Drive, Blakelands, Milton Keynes MK14 5LR Registered in England number 2835230.

## Service intervals

When you order your KAROQ, you can choose whether your car is on a fixed or a flexible service regime. Your ŠKODA retailer will help you decide which regime suits how your car will be driven, enabling your car to stay in the best possible shape.

Fixed regime: service every 10,000 miles or one year (whichever comes first).

This is recommended if the vehicle is likely to be used in the following way:

- > Driven fewer than 10,000 miles per annum.
- > Mainly short journeys, driven mostly in towns or cities.
- > High vehicle loading/towing and frequent hill climbs.
- > Heavy accelerating and braking, using high revs.

Flexible regime: Sensors in the engine detect when a service is needed. A service light will show between 9,000 and 20,000 miles or up to 24 months (whichever comes first).

The flexible service regime is recommended for vehicles with a daily mileage of more than 25 miles where the vehicle is driven regularly and mainly at a constant speed with minimum vehicle and engine loading, minimal towing and driven in an economical manner.



# ADDITIONAL INFORMATION – CONTINUED

## Roadside assistance

A three year, European-wide, unlimited mileage ŠKODA Assistance policy comes free of charge with every new ŠKODA. There's a team of specially trained technicians who carry the right diagnostic equipment and parts to get you back on the road as quickly as possible in the unfortunate event of a breakdown.

Provided in partnership with the AA. Exclusions and terms and conditions apply. For details please speak to your local ŠKODA Retailer.

## Customer services

Talk to us on **03330 037 504**. No matter what the query, our dedicated call centre is always ready to listen. No matter how big or small the request, speak to one of our customer care advisors to see if they can help. The call centre is open Monday to Friday from 8.30am-5.30pm. You can also talk to one our advisors via live chat, on Monday to Friday from 8am-8pm.

## A network that's here to help

You can be sure that as a ŠKODA customer, your retailer will look after you from the moment you walk through the door and throughout the life of your ŠKODA. Your KAROQ will be serviced and maintained by specially trained ŠKODA technicians, and when you need a spare part you'll be happy to know that most are held in stock, or ordered within 24 hours. So if top class customer satisfaction is what you're after, the ŠKODA network will be there for you.

## Motability

People who are in receipt of one of the following allowances, and have at least 12 months remaining on their reward, may be eligible for a vehicle via the Motability scheme.

Higher Rate Mobility Component of the Disability Living Allowance (HRMC of DLA), Enhanced Rate of the Mobility Component of Personal Independence Payment (ERMC

of PIP), War Pensioners' Mobility Supplement (WPMS) or Armed Forces Independence Payment (AFIP).

For full details of the scheme, current model availability and pricing, please contact the Motability specialist at your local ŠKODA Retailer.

## Warranty

### Peace of mind with a ŠKODA warranty

In the first two years of owning your car, you'll get the peace of mind of a two year unlimited mileage warranty. In addition, you'll also get a further warranty on new vehicles supplied through the appointed retail network until the vehicle has completed 60,000 miles or the end of the third year, whichever is sooner. Your KAROQ also benefits from a three-year paint warranty and 12-year body protection warranty.

Exclusions and terms and conditions apply.

### Owning a ŠKODA

#### Three-year vehicle warranty from new

First two years unlimited mileage.  
Third year with 60,000 mile limitation, whichever is sooner.  
Four to five years Optional Extended Warranty.

#### Three-year paint warranty

Up to 12 years body protection.

#### Exclusions and limitations

Wear and tear components will only be considered under the terms of the warranty for the first of six months or 6,500 miles, whichever is soonest. These include, but are not limited to brake linings and disc pads, clutch release bearings, clutch pressure plates and centre plates, tyres, wiper blades, seat and backrest covers, floor coverings, spark plugs, batteries for key fobs and alarms, light bulbs and shock absorbers. Mechanical adjustments including but not limited to adjustments to doors, flaps, boot lids, bonnets and sunroof, brake adjustment, clutch adjustment, v belt adjustment, headlight

adjustment, steering geometry adjustments and wheel balancing are excluded.

Damage (including but not limited to the following) is excluded:

- > Damage caused by your failure to take all reasonable steps to prevent mechanical damage from occurring.
- > Damage or defects caused by not having the vehicle serviced in accordance with the manufacturer's guidelines.
- > Damage or defects caused by improper use of the vehicle, neglect or use of the vehicle for motor sports activities.
- > Damage caused by an accident.
- > Damage to paintwork or chrome caused by external influences, such as climatic, chemical or industrial pollution.
- > Damage resulting from the use of non-original replacement parts.

Routine maintenance and servicing is not covered by the warranty. Incidental or consequential costs such as hotel charges, car hire, and loss of personal effects or income are not recoverable under the terms of the warranty.

## Adding that little extra to your car

If the standard specification and factory fitted options aren't enough for you, then why not take a look at our range of retailer fitted accessories? A separate accessories brochure can be found at your local retailer, or can be viewed online at: [skoda.co.uk/owners/accessories-and-merchandise](https://skoda.co.uk/owners/accessories-and-merchandise)

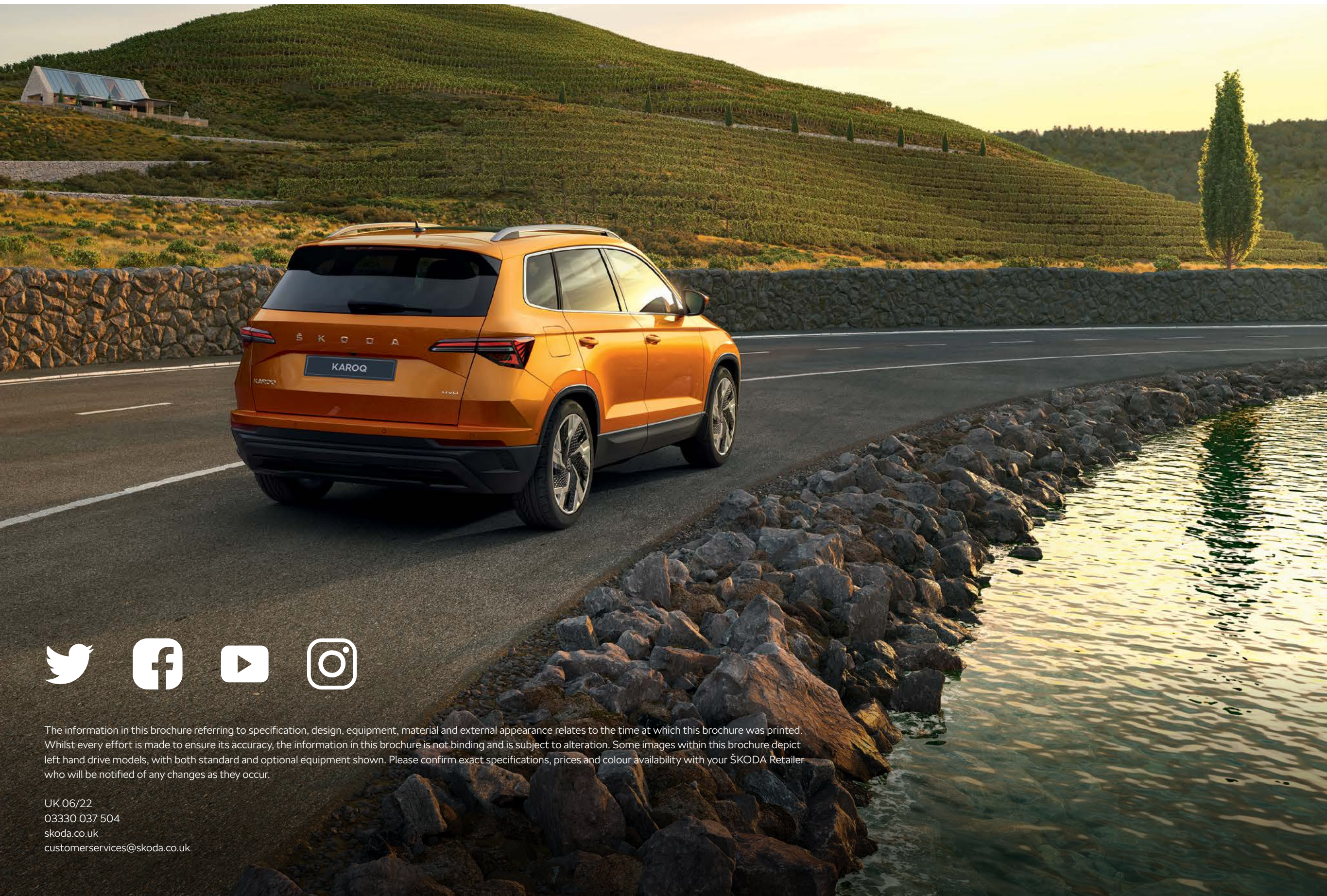
Figures shown are for comparability purposes; only compare fuel consumption and CO<sub>2</sub> figures with other vehicles tested to the same technical procedures. These figures may not reflect real life driving results, which will depend upon a number of factors including the accessories fitted (post-registration), variations in weather, driving styles and vehicle load. Data correct at 1st June 2022. Choice of wheels and other options may affect fuel consumption and emissions data. For more information, please see [skoda.co.uk/owners/wltp-info](https://skoda.co.uk/owners/wltp-info) or consult your Retailer.

ŠKODA UK may change RRP's at any time (this includes where there are government changes in regulation and/or legislation). There may be a delay to any RRP displaying correctly on our materials. Always obtain prices from your chosen ŠKODA Retailer.

The information in this document referring to specification, design, equipment, material and external appearance relates to the time at which this brochure was created.

Whilst every effort is made to ensure its accuracy, the information in this document is not binding and is subject to alteration. Some images within this document depict left hand drive models, with both standard and optional equipment shown. Please confirm exact specifications, prices and colour availability with your ŠKODA Retailer who will be notified of any changes as they occur. Information regarding tyre technical specifications can be found by visiting the ŠKODA car configurator [here](#).





The information in this brochure referring to specification, design, equipment, material and external appearance relates to the time at which this brochure was printed. Whilst every effort is made to ensure its accuracy, the information in this brochure is not binding and is subject to alteration. Some images within this brochure depict left hand drive models, with both standard and optional equipment shown. Please confirm exact specifications, prices and colour availability with your ŠKODA Retailer who will be notified of any changes as they occur.

UK 06/22  
03330 037 504  
skoda.co.uk  
customerservices@skoda.co.uk