

ALLEN COUNTY SETTLED IN 1820 BUT  
ORGANIZED IN 1831 AND BEGAN ITS  
GOVERNMENT

LIMA BEGAN IN 1831.

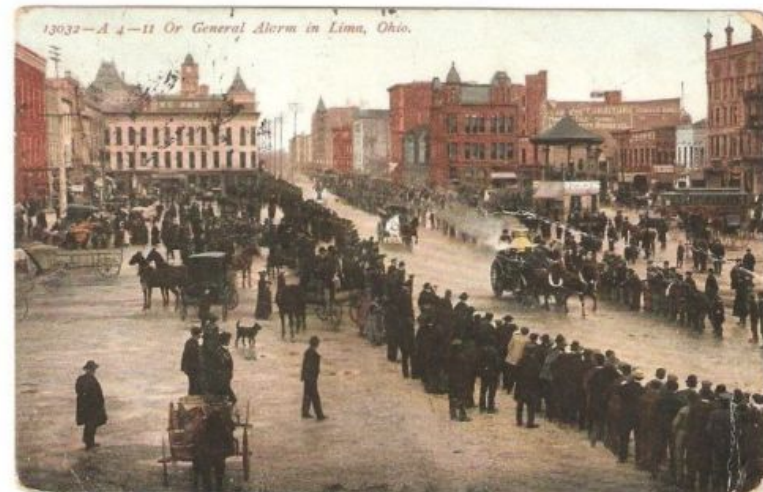
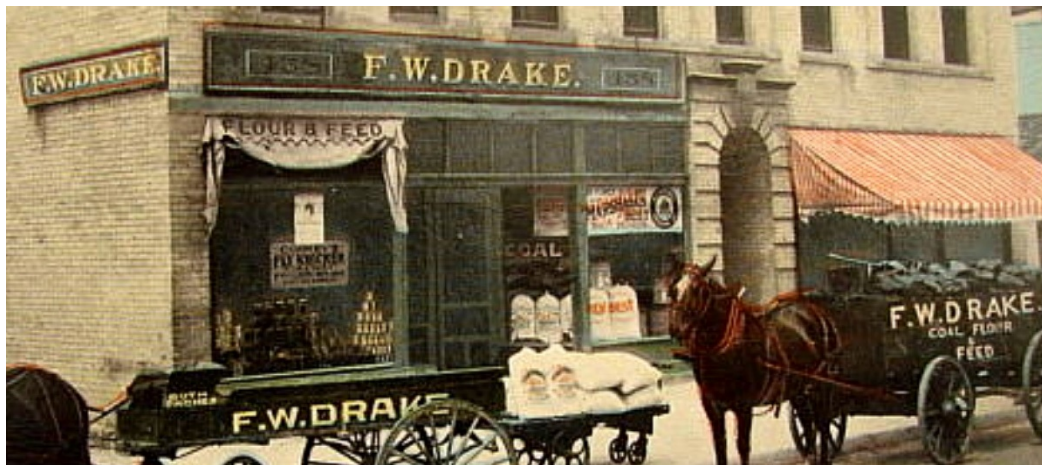


# Horse and Wagons

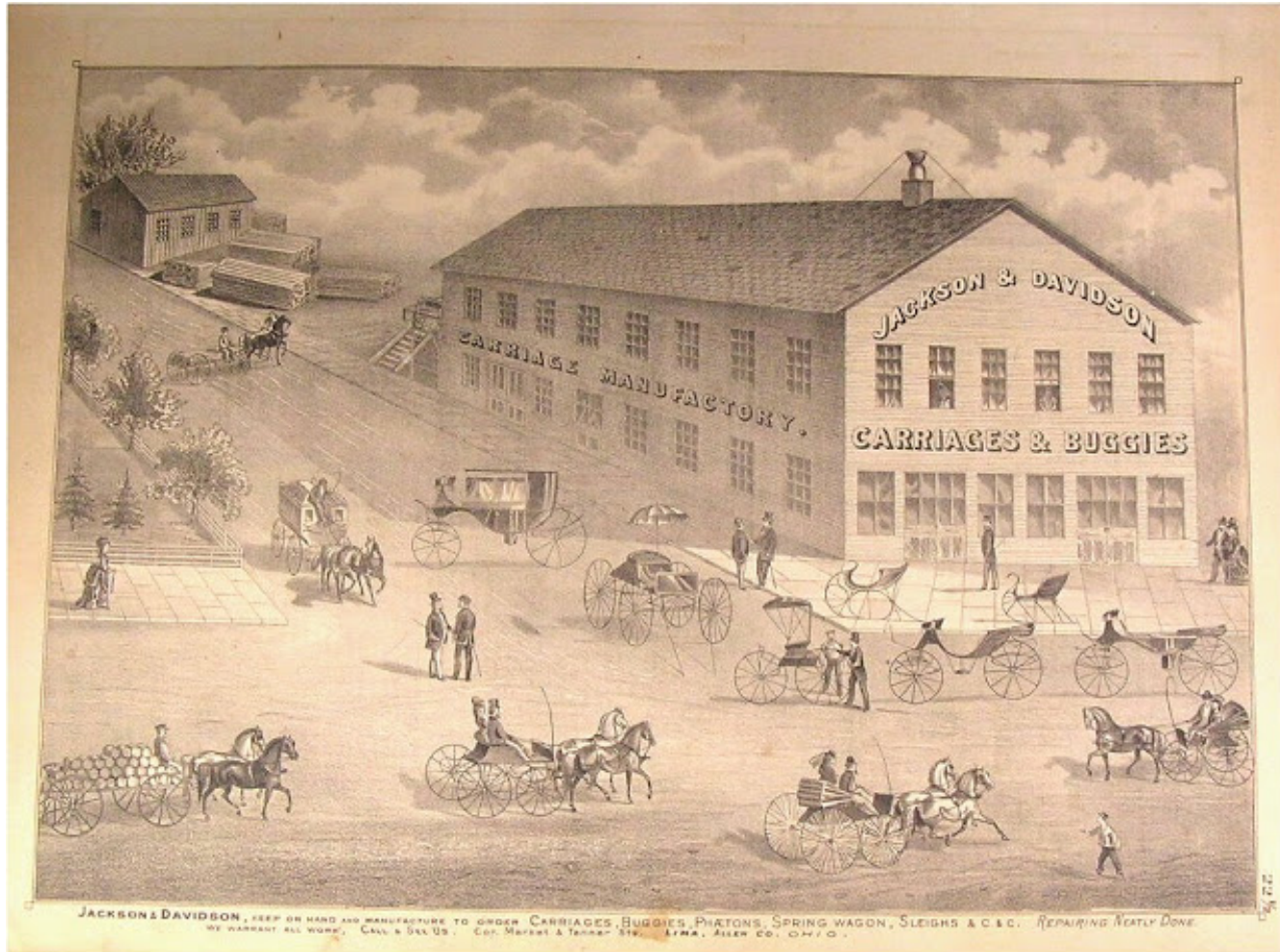
In the 1820s - 1850s Horses and Wagons were the only type of transportation. People used horses and wagons throughout the 1800s since cars were not yet invented. Not only did they move west in a wagon, they also used them to farm and haul things to town. Sometimes horses were even ridden without using a wagon.



Horse and Wagons were the first garbage trucks, school buses, delivery trucks and fire trucks.



This picture shows a business in Lima that built carriages in Lima. Carriage businesses were very busy in the 1830s - 1850s.

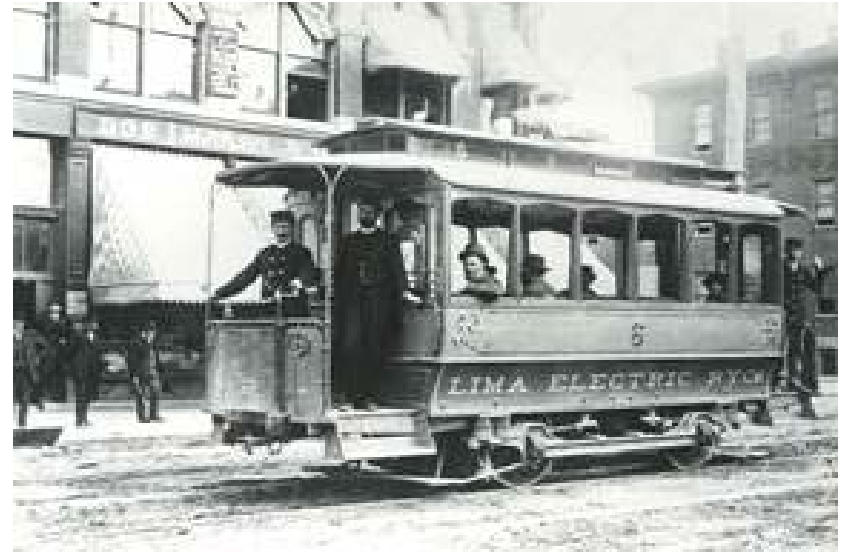


Cor. Market & Tanner Sts. LIMA, ALLEN CO., OHIO.

# Street Cars



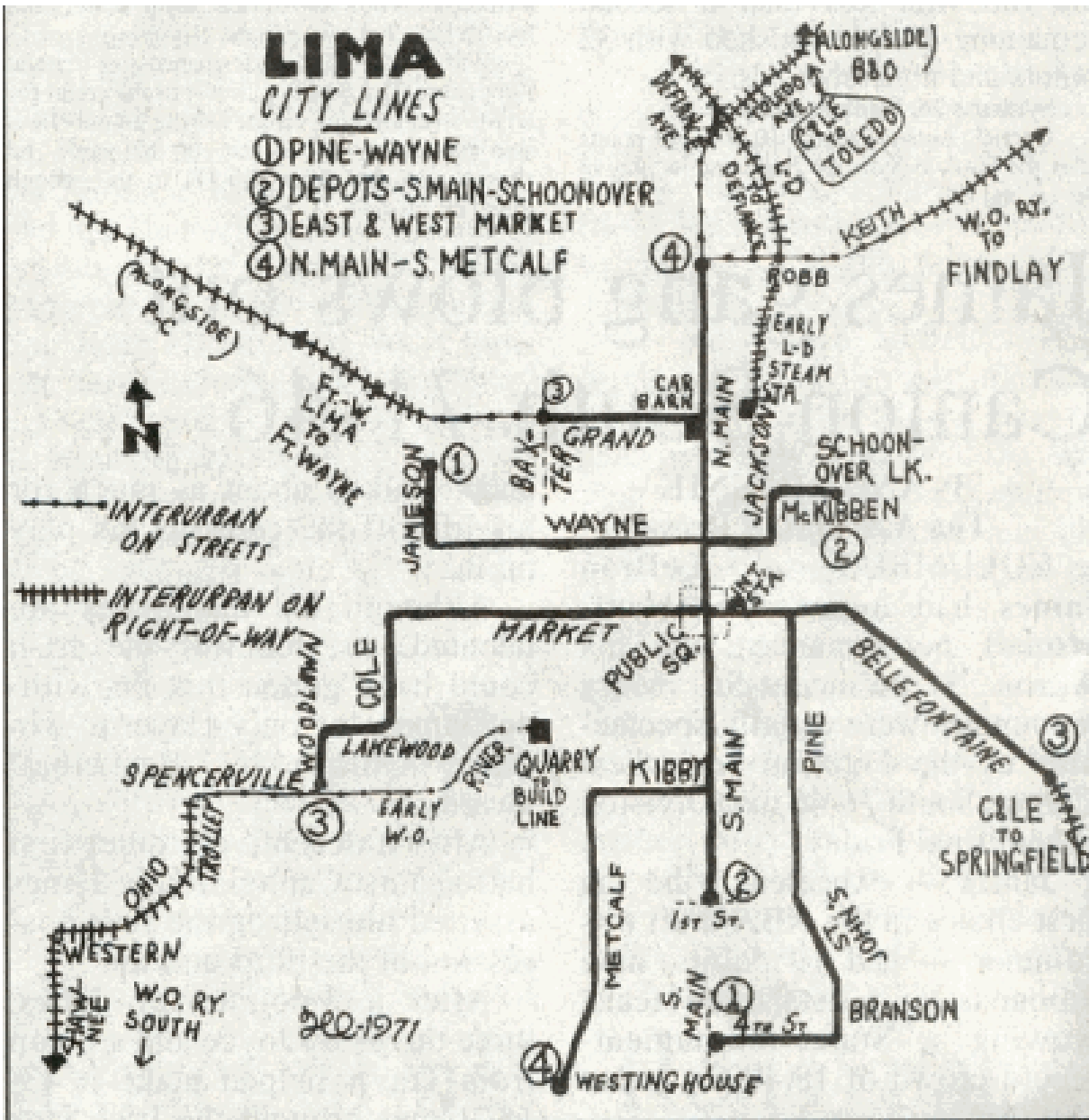
Street Cars were a form of transportation within Lima. In 1878 the first horse drawn street cars were seen, In 1886 Benjamin Faurot, gave the money for them to become electric street cars. These were the first electric street cars in Ohio. They ran daily in Lima until 1939.



# Horse Drawn - Electric - Interurban



Once the railroads reached Lima in 1854, the interurban rail system transported people from city to city.



Use this map to find other cities that were connected to Lima by the Interurban rail system.

A map of the interurban line in Lima.

# Miami Erie Canal

- With the completion of the canal in 1845, Ohio had a waterway to move goods. With the completion of the railroad, the "slow" canal boats were no longer needed.





# Miami Erie Canal

- The canal was built by German and Irish immigrants. It was dug by hand. There was a tow path and locks also built as the canal was dug. The canal was used up until 1913. Railroads were much faster and a flood severely damaged it in 1913.

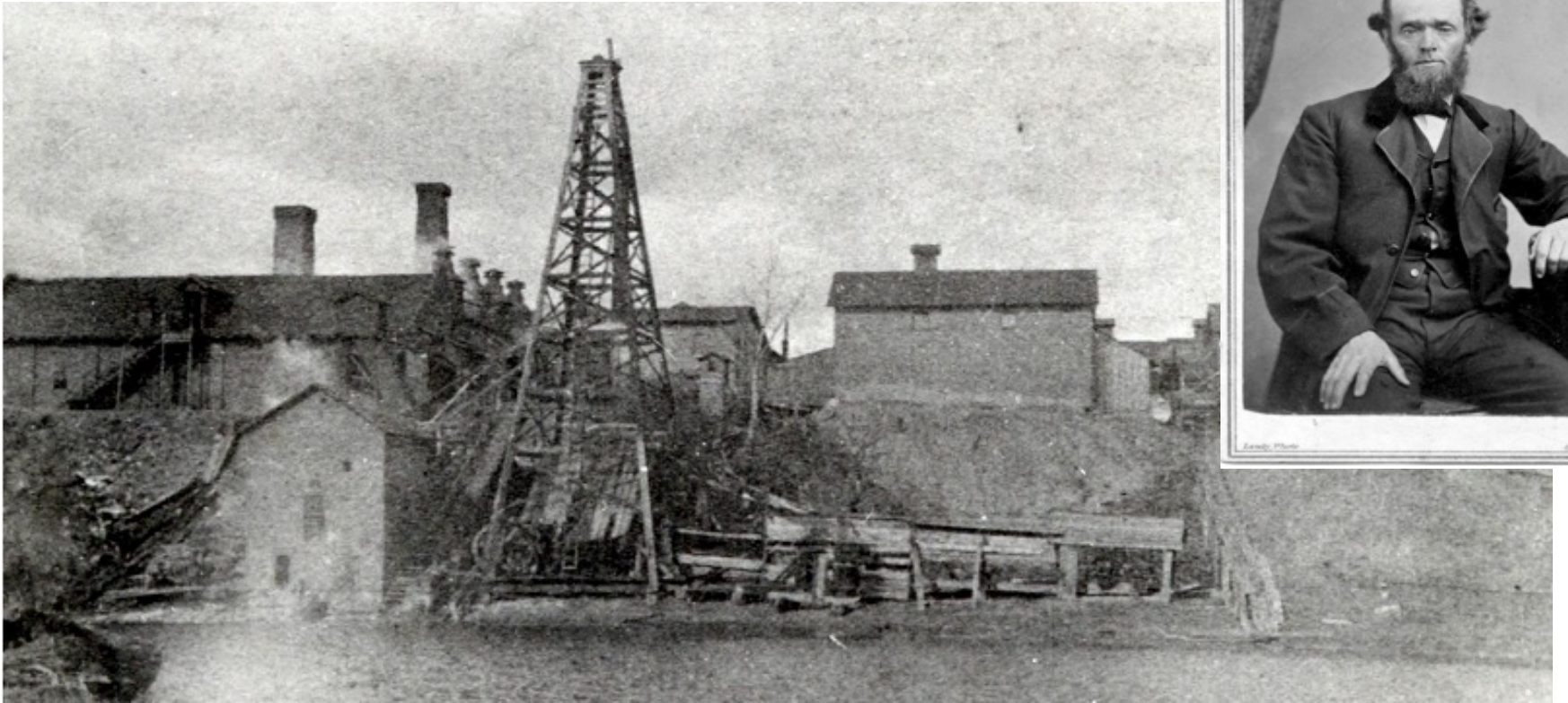


Miami and Erie Canal



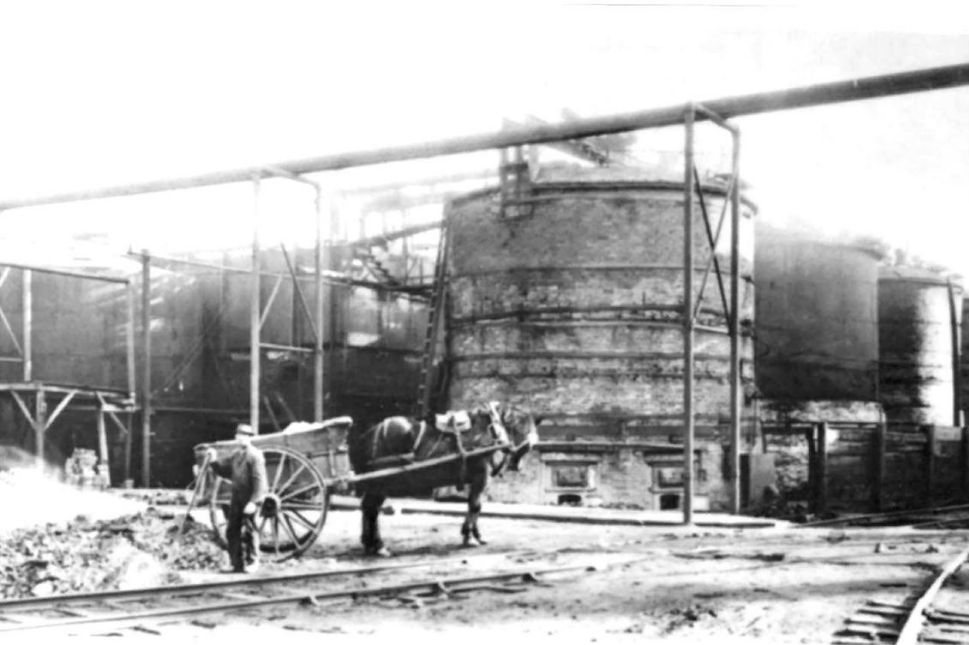
# BEN FAUROT'S LIMA PAPER MILL

After drilling for natural gas along the Ottawa River in 1885, Ben Faurot discovered oil. The paper mill opened in



# Lima Refinery

In 1886, John D. Rockefeller began the building of this refinery. It has had many names. First, it was Solar Oil, Standard Oil, BP, Valero, Premcor and Clark. The oil comes by pipeline from Texas and the Gulf of Mexico. In 2007, the refinery became known as Husky.



# The Lima House

This hotel was built in 1852 in Town Square. With the oil boom bringing people to Lima, they needed a place to stay. The building was demolished in 1966.



# Banta Candy Factory

Frank Banta built a candy factory in 1882. He made chocolates and gum. After many fires, including a large one in 1902, the candy factory closed in the 1940s because people no longer had money to buy candy.



# Pangles

A small grocery store was opened in 1924 by Howard Pangle. A huge fire destroyed his first big store in 1963. He had 7 different stores. It stayed open until the early 1980s.



**Low  
Prices  
Prevail  
Every  
Day**

**SHOP and  
SAVE  
Pangles  
CORNER  
CENTRAL  
and  
CIRCULAR  
LUNA'S LEADING FOOD MARKET...**

# Gramm-Bernstein Co.

- This company began making trucks in 1912. The most famous type of truck it made was the Liberty Trucks for the U.S. Army. It continued until 1939.



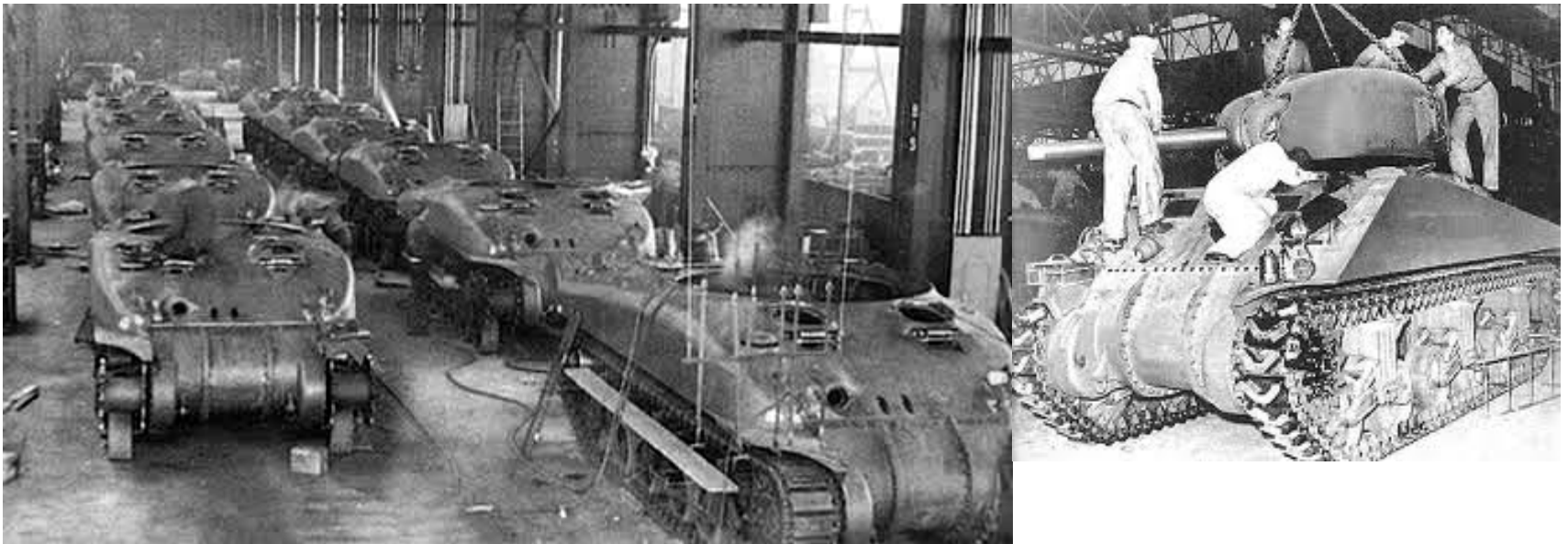


Liberty Trucks



# Joint Systems Manufacturing

- The Lima Tank Plant was formerly known as General Dynamics. It manufactures different types of tanks. It originally was owned by the army, but not any longer. It was built in 1941.



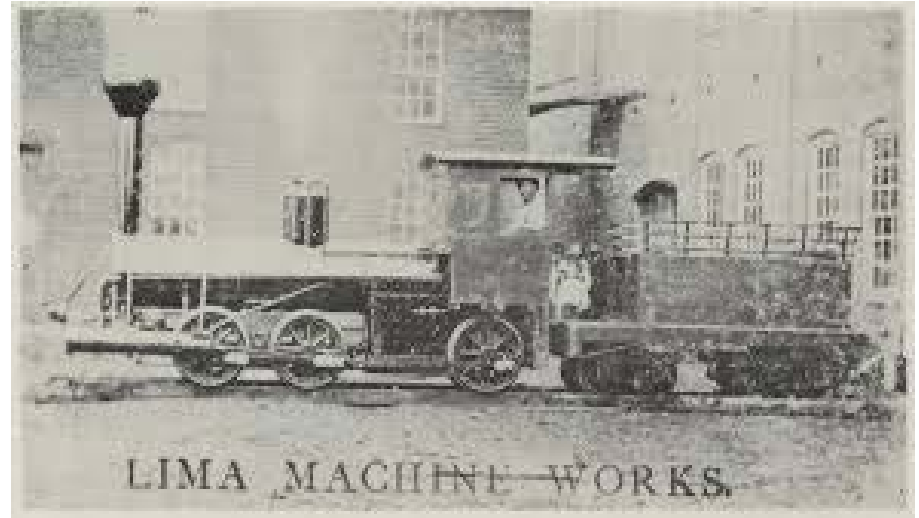
# Tanks

- Lima continues to make tanks. Tanks help to defend soldiers in battle.



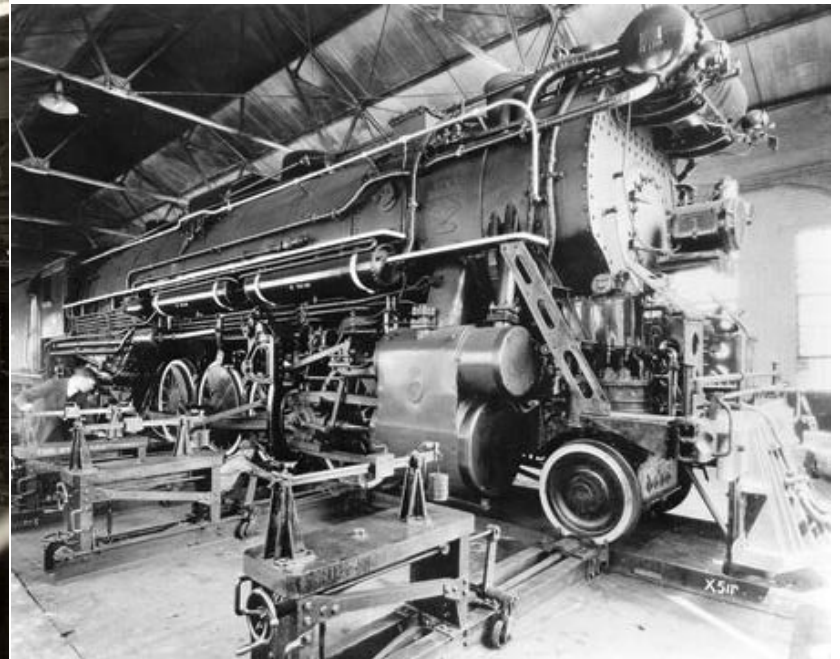
# Lima Locomotive Works

- With the development of the railroad in the 1850s, Lima became very important and grew very quickly. The Lima Locomotive Works began in 1869 made the Shay Locomotive. This gave Lima its nickname of "Train Town".



# Lima Machine Works

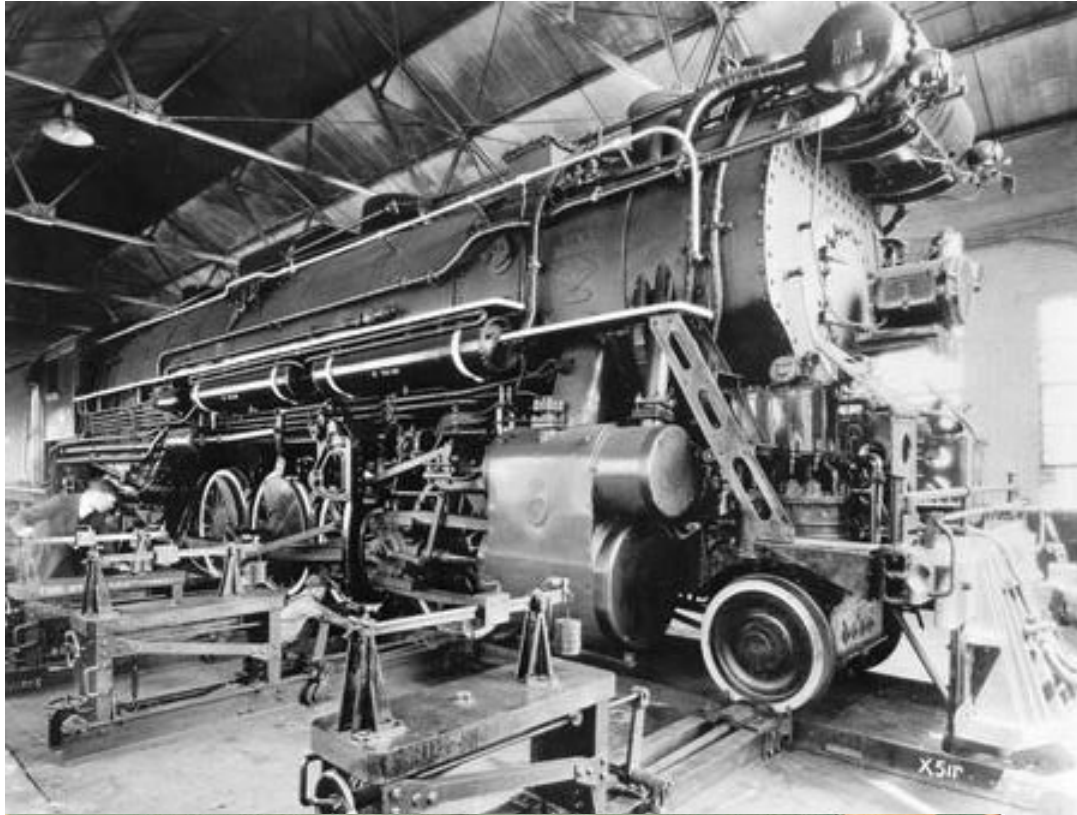
- At first the Shays were built at Lima Machine Works. After a major fire, construction was moved to a new building.



# Lima Locomotive Works

- Lima Locomotive was located near the steel mill and refinery. Other locomotives other than the Shay were also made here.



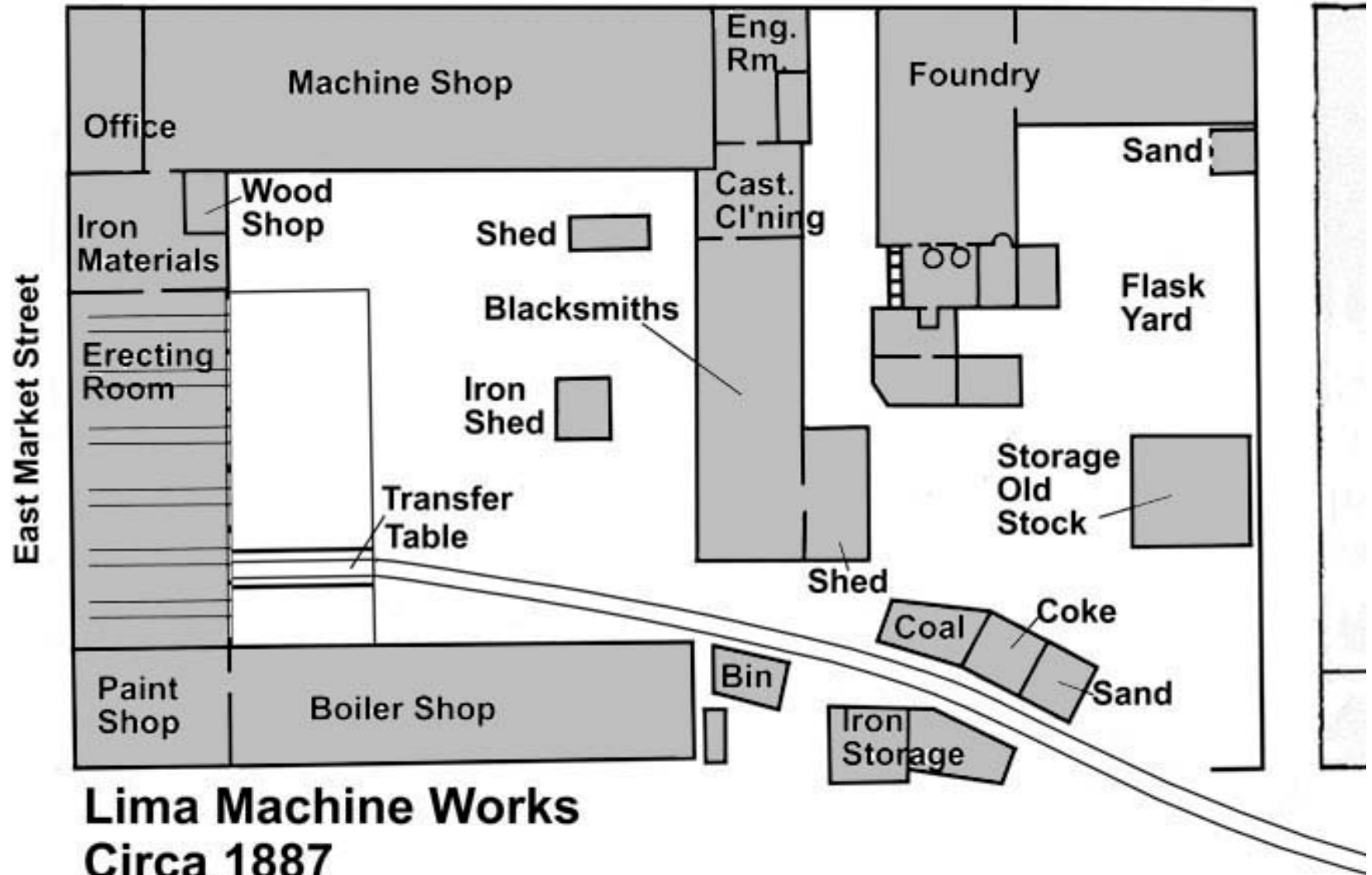


# Shay

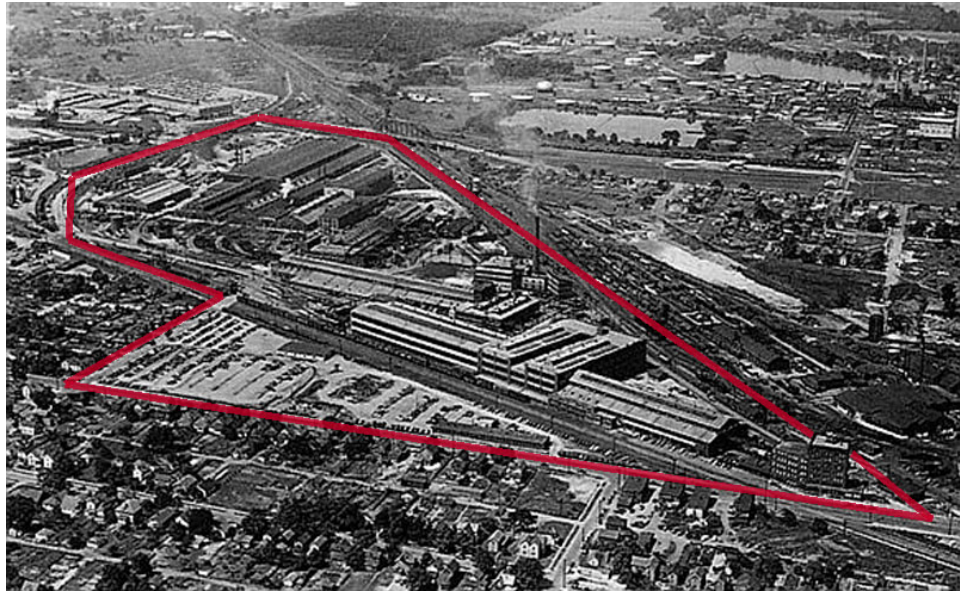
## Locomotive

Since the Shay was a steam locomotive, a man on board would be in charge of shoveling coal into the boiler to power the locomotive. The Shay was a powerful locomotive. The last Shay was built in 1949.

South Jackson Street



**LIMA LOCOMOTIVE WORKS**  
**LIMA, OHIO**  
(1923)





The Lima Locomotive Works also started making road construction equipment and cranes. It was renamed Baldwin-Lima-Hamilton in 1950. Other types of locomotives were made. In 1971, it became Clark Equipment that closed in 1981.



# OHIO STEEL FOUNDRY-LIMA

The steel foundry was opened in 1907 and was cofounded by John E. Galvin. Today it is known as Whemco.



# Memorial Hall

Memorial Hall was built in 1908 for local military veterans. It was used for many purposes, but was closed in 2015 because the building was no longer safe inside.



# Hospitals

St. Rita's was opened in 1918. It was added onto in 1948, 1967, 1975, and 2007.



Lima Memorial opened as City Hospital in 1899. In 1933 a new hospital was built at the current location. It was expanded in 1950, 1957, 1967, and 2007.



# Superior Coach - Sheller Globe

This company which was opened in 1925 made school buses and funeral coaches. This company closed in 1981.



## Superior for '56



with  
**SUPER-RIGID**  
and  
**SUPER-KOTE**  
**STEELS**

Additional safety, lower maintenance, greater beauty, longer bus life . . . these are the significant benefits inherent in the group of new, specially-processed steels featured on your 1956 Superior Coach.

Steel is basic to the construction of *any* school bus. But Superior, in its constant effort to improve school bus safety standards, has gone beyond conventional use of body steels. Superior makes *maximum* use of steel. Special steel processing, improved construction methods, and the finest materials all go into the bus that is in every respect . . . safer by design and safer for your children. Superior Coach Corporation, Lima, Ohio.



**Superior...**  
safer by design



# UNOH

The University of Northwestern Ohio opened in 1920. In 2006, the university went through a very large expansion that continues to this day.



# Westinghouse

Westinghouse made small motors. It opened in 1935 and closed in 1995 after it was bought by Sunstrand.



# City Park Zoo

The zoo was open in Fawcett park from the late 1930s to the 1950s.





# Engines

The Ford Engine Plant in Lima was opened in 1957 and makes engines for trucks and cars.



# Mashed Potatoes

First started in 1966, I and K Distributors in Delphos made types of salads. They built a new business which sold to Bob Evans and now makes mashed potatoes.





P and G  
P and G opened  
in Allen County in  
1968. Laundry  
detergent and  
soap are made  
in Allen  
County.



# OSU BRANCH CAMPUS

In the 1960s, Ohio State University built a small campus in Lima. The first building, Galvin Hall, was opened in 1966. John Galvin provided the University money to buy land.



# INTERSTATE 75

In the 1950s Interstate 75 connected many states. It connects many states running north and south from Michigan to Florida.



# One Room Schools

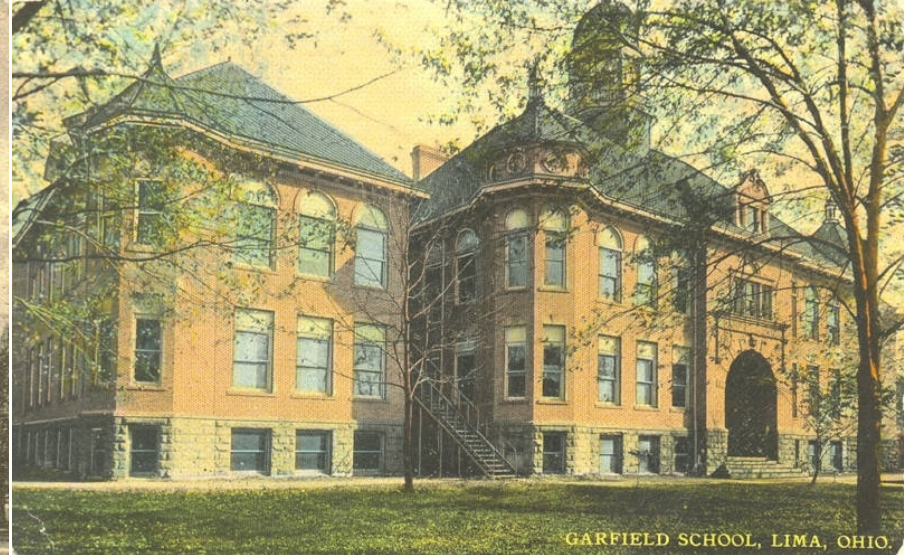
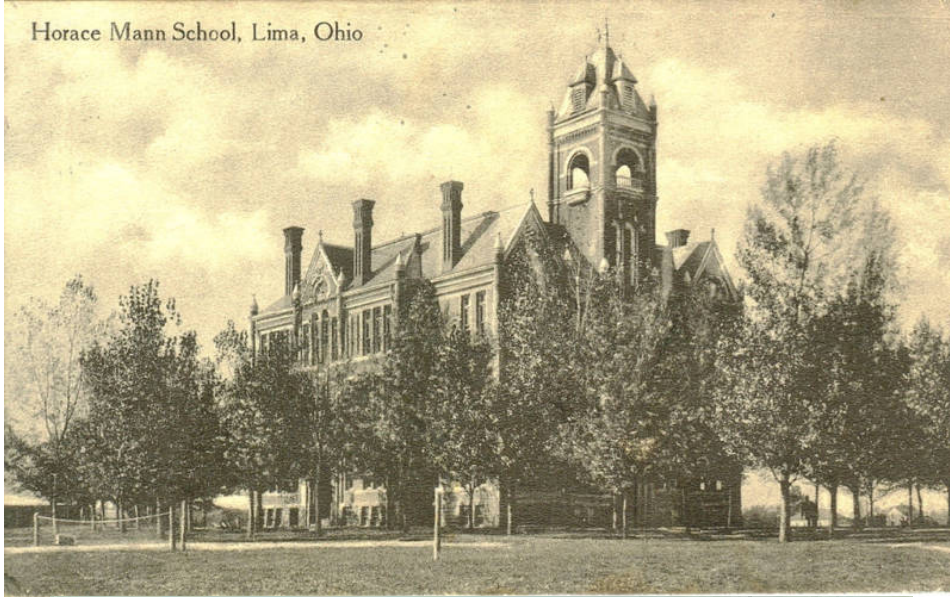
In 1900, there were over 100 one room schools.  
In 1935, there were only 27 one room schools.  
In 1940, the last one room school house closed.



# Schools with Many Classrooms

These schools were built to replace one room school houses.

Horace Mann School, Lima, Ohio

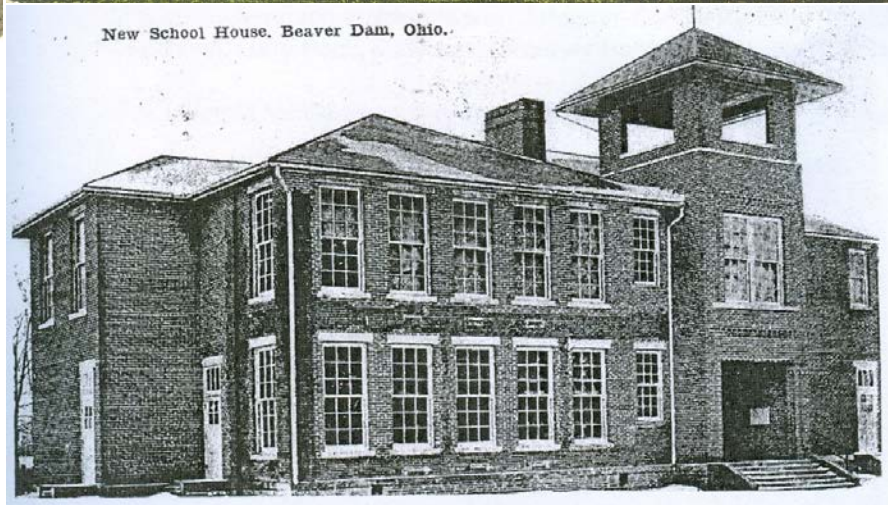


GARFIELD SCHOOL, LIMA, OHIO.

Lima High School, Lima, Ohio



New School House, Beaver Dam, Ohio.



# New Schools

In the 1950s and 1960s, many new schools were built in Lima.

**1954** - St. Charles was built.

**1955** - Lima Senior (old) was built.

Early **1950s** - all new schools were built in Lima.

**1960s** - more schools were built in Lima after one burned down (Central)





# Lima Civic Center

The Veteran's Memorial Civic and Convention Center was built in Town Square and opened in 1984 and expanded in 2000. Many performances and productions come every year to the Civic Center.



# Guardian Ethanol Plant

This plant makes fuel from corn. It opened in 2011 and sits near I-75.

