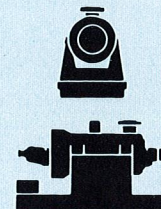
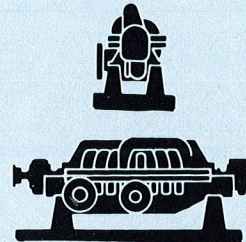
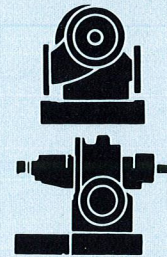
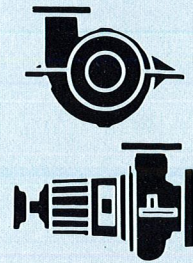
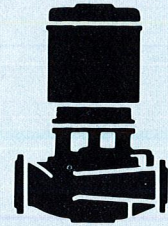


# Byron Jackson Pumps

## QUICK SELECTION CHART

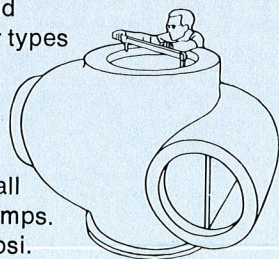


Pump Type	Vertical In-Line Process	Centerline Support Process	Horizontal Single Stage	Horizontal Multi-stage	Horizontal Double Case	Vertical Double Case	Vertical Circulating	Vertical Turbine	HQ Circulators	Submersible	
<b>Models</b>	IN	SJA, DSJA, DSJH, GSJA, GSJH	DVS, DVDSR	CMX, DVMX, SDMX, RBMX, DVSS, DVDS		HDB, HSB, HDO, HSO	VLT, VHT, VMT, Hydropress	KX, RX, PMR, PHR, HS, Type D, FCDW	VTP, SUMPMASTER	Sizes 15", thru 33"	Type H & M
<b>Applications</b>	Process, transfer & general service. Corrosive and volatile.	All process fluids. Corrosive, volatile. Charging and transfer.	Crude, Product & Service Water, pipelines, water works, utility feed & booster service.	Boiler feed, pipeline, waterflood, descaling, recovery turbine, hydrocarbon charge.		Boiler feed, hot oil charge, water injection.	Loading, booster, boiler feed, condensate, pipeline, waterflood.	Cooling tower, de-watering, condenser circulating, river intake, irrigation, molten salt. Thermal dilution.	Water wells, irrigation, booster, sump, circulating, industrial waste, source wells.	Industrial, cooling, processing & booster. Large wells, municipal.	Water well, booster, mine dewatering, storage caverns, irrigation, offshore source water.
<b>Construction Features and Options</b>	Compact design. Simplified in-line mounting. Integral or coupled pump-motor shaft. Packed, internal or conventional sealed stuffing box. Standard motors. Metallurgical options. "Canned" motors for zero leakage. Cryogenic variants.	Air, fan or water cooled bearings. Optionally jacketed packed or mechanically sealed stuffing-box. Stocked interchangeable components. Double bearing, adjustable bearing options. Variants and special adaptations for Coke Crusher, HF acid, slurry design.	Horizontal and Radially split case (designs) single or double volute. Double suction. Packing or mech. seal. Speed to 7000 RPM. Specialized options for high pressure and special metallurgies.	Balanced double volute & opposed impeller design. Fan cooled brg. models. Horizontal split, easy access. Double row bolting prevents inter-stage leakage. High speed models build up to 7000 RPM.		Double case construction with forged barrel, 4-5 chrome inner case std. Inherent balance even under load change or wear. Quick, uniform pre-heating. Throttle bushing, packing or mech. seal. High speed models to 7500 RPM.	Barrel mounted, high pressure & low NPSH models. Compact. Single or multi-stage. Jacketed, packing or mech. seal models. Vertical design saves space.	Single or multistage. Oil or water lube. Above or underground discharge. Self-priming. Simple installation, small space without special dry pit. High efficiency. Job engineered designs.	Bowl & impeller design & materials to suit any need. Oil or self lube. Pit or surface installation. Extra long by-pass bearing and seal combination. Effective sand cap. Closed or semi-open impellers.	Pre-engineered designs, pit or surface installation. Space saving. Vertical solid or hollow shaft, oil or water lube. Multi staging.	Completely submerged, sealed motor. Mercury sealed. Choice of bowl and impeller combinations. Deep setting, no noise no pump house needed.
<b>Capacities</b>	to 1250 gpm	to 12,000 gpm	to 50,000 gpm	to 12,000 gpm		As required for any service.	20 to 50,000 gpm	to 130,000 gpm std. (higher on specials)	to 10,000 gpm	to 25,000 gpm	to 20,000 gpm
<b>Heads</b>	to 450 feet	to 1450 feet	to 1100 feet	to 6000 feet			55 to 2000 feet	to 500 feet or as required	to 800 feet	to 150 per stage	to 1800 feet
<b>Pressure (Hydrotest)</b>	to 1000 psi	to 1000 psi	to 500 psi and up as required	1500 to 7000 psi		2500 psi and up as required	As required	As required	As required	As required	As required
<b>Temperatures</b>	-320 to +500°F.	-320 to +850°F.	to 500°F.	to 600°F.		As required	-320 to +650°F.	to 1500°F.			
<b>Bulletin</b>	No. 1-201	No. 1-250 thru No. 1-270	No. 1-820	No. 1-730		No. 1-1120	VLT No. 2-170 VMT No. 1-420 Hydropress No. 1-440	No. 1-900	DWT No. 2050 SUMP No. 2-150	No. 2-155	No. 2560

## SPECIAL PUMPS FOR ANY PURPOSE

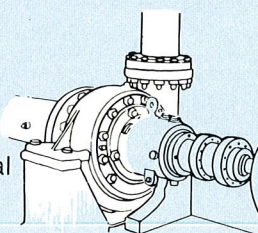
### NUCLEAR PUMPS

Byron Jackson designs and manufactures all the major types of nuclear pumps, including liquid metal at 2,200°F. mechanically sealed and liner motor pumps for reactor coolant as well as all auxiliary nuclear power pumps. Suction pressure to 3,000 psi.



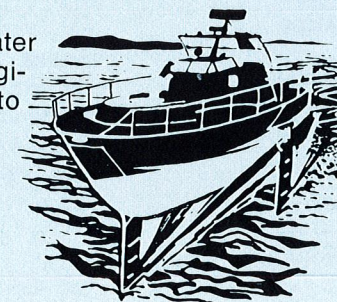
### CRYOGENIC PUMPS

A full line of pumps, both vertical and horizontal, for low temperature service (to -320°F.) is available in standard designs. BJ can also design and build a special pump for any purpose.



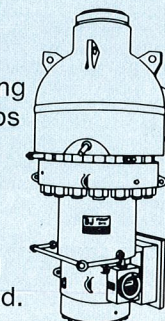
### PROPULSION

Hydrofoil and water jet pump units engineered and built to Naval, barge and commercial sea transport system specifications.



### HYDROCARBON CRACKING

Reactor circulating and charge pumps for specialized services, suction pressures 3,000 psi and 900°F. custom designed and manufactured.



### ADVANCED ENGINEERING

In addition to the complete line coverage presented, Byron Jackson is prepared, through our advanced engineering, to serve you in new and unique applications. For additional information we invite you to contact the Byron Jackson Pump Office nearest you. See back cover.