



2021-22

ANNUAL REPORT

INDIANAPOLIS  SYMPHONY ORCHESTRA



MESSAGE FROM THE CEO

In the 2021-22 season, the Indianapolis Symphony Orchestra kept its promise—a promise made during the pandemic to our patrons and to our city—to return to its home downtown and share music once again with this community. After taking the first steps at live concerts in May 2021 with limited audiences and a reduced number of musicians on stage, the full orchestra was back on September 17, 2021, for the first of more than 100 concerts in the 2021-22 season performed with no limitations. Even as safety precautions continued, there was no mistaking the joy that live music brought to Hilbert Circle Theatre patrons.

The return to a full season of concerts was clearly the most noteworthy demonstration of the ISO’s commitment to serving the community in central Indiana. Listeners took notice of the extraordinary quality of the music being made by a mix of longtime veterans of the orchestra and many newcomers to the ISO. The music continued unabated thanks to a new three-year collective bargaining agreement with the musicians that took effect in September 2021. Artistic Advisor Jun Märkl provided musical leadership to guide classical music programming while the search for the ISO’s next music director continued. The ISO announced in August that Jack Everly would continue his role as Principal Pops Conductor through 2025-26.

Returning to the concert stage was but one way the ISO kept its promise to serve the community in the 2021-22 season. The orchestra’s education and community engagement programs returned with a mix of live and virtual programming that engaged thousands of community members. The nearly 200-strong Metropolitan Youth Orchestra participants resumed in-person rehearsals and concerts under the dedicated

leadership of Krystle Ford. Sadly, the MYO members said goodbye to founder Betty Perry in a moving tribute on January 26, 2022, just days before she died of pancreatic cancer. How fitting that the founder who fought with every breath to keep the orchestra thriving since its founding in 1995 was able to attend her own life celebration while her young musicians serenaded her with “Stand by Me.”

While there is so much to celebrate, we cannot overlook the challenges the organization faced in 2021-22. Concerts resumed but audiences did not return in pre-pandemic numbers. COVID-19 restrictions played a part in this, but we cannot overlook the impact of perceptions about the safety and security of downtown. This remains a focus of our ongoing work with city leaders. The possibility of a looming recession may have hindered our fundraising efforts, which fell short of the annual goal. Overall, the ISO experienced a deficit of \$168,000, a figure that was minimized through our staff’s judicious management of expenses. Going forward, the ISO board is committed to a strategic planning process in 2023 to assure that the organization remains fiscally strong. The plan will also incorporate a facilities study to take stock of the work needed to ensure that the Hilbert Circle Theatre can serve audiences for decades to come.

With gratitude,

James M. Johnson, CEO

2021-22 NEWS HIGHLIGHTS



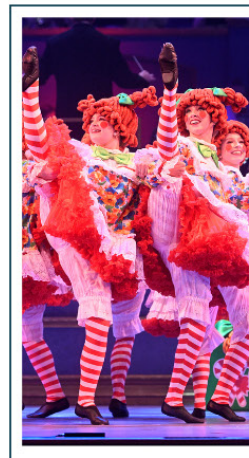
To provide musical leadership, for the first time in its history, the ISO appointed an Artistic Advisor Jun Märkl, to serve while the search for the next music director is ongoing. Märkl began his appointment in 2021-22, conducting several concert programs each season, giving overall direction to classical music programming, and assisting in hiring and evaluating new musicians.



The musical highlights in the 2021-22 season included a new collaboration with the Detroit-based Sphinx Organization to promote diversity in classical music, a partnership that resulted in four free concerts throughout the community.



Another critical step in providing consistent artistic leadership was the announcement in August 2022 of Jack Everly’s retention as Principal Pops Conductor through the 2025-26 season and an evergreen appointment as the AES Indiana *Yuletide Celebration* Music Director.



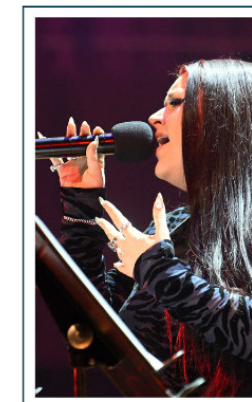
The Printing Partners Pops Series celebrated the artistry of our own ISO musicians and stars from film and the Broadway stage. The AES Indiana *Yuletide Celebration* was “Magic Worth the Wait” when host Sandi Patty and vocal group T.3 joined Jack Everly and the orchestra in welcoming nearly 30,000 holiday revelers to Hilbert Circle Theatre.



The ISO continues to make strides to highlight composers from diverse cultures whose music has been unjustly neglected, including 20 composers featured as part of the *Unheard Voices* initiative in 2021-22. Among those featured were Florence Price, **Jessie Montgomery**, Carlos Chavez, and many more.



To close out the season, the musicians of the ISO returned for the 40th anniversary season of *Kroger Symphony on the Prairie*—performing ten concerts with orchestra in a season that saw attendance come back strong with nearly 72,000 people attending.



A new series, *Uncharted*, debuted under the artistic direction of Steve Hackman with a pair of groundbreaking concerts fusing present-day music with classical repertoire, including Resurrection Mixtape – an ecstatically received concert that paired Mahler’s “Resurrection” Symphony with music of Tupac Shakur and Biggie Smalls.

2021-22 BY THE NUMBERS

\$6,828,177

raised from individuals, corporations, foundations, government, special events, and other ways.

- 3,395 Donors
- 50+ Corporate Sponsors
- 1,500+ Founders' Room Attendees
- 200+ Indiana nonprofits received free tickets to the ISO.

* Ticket counts include paid and comps



183,372

TOTAL TICKETS

\$6,687,715

TOTAL OVERALL SALES



aes Indiana
YULETIDE CELEBRATION
INDIANAPOLIS SYMPHONY ORCHESTRA

SALES
\$2,055,962
TOTAL TICKETS
33,440



Kroger
SYMPHONY ON THE PRAIRIE

SALES
\$2,554,588
TOTAL TICKETS
89,080

MARKETING & COMMUNICATIONS

The return of in-person events resulted in significant year-to-year growth on all of the ISO's digital platforms. With new staff in place, the Marketing & Communications team implemented strategies to engage with new audiences on social media and drive ticket sales. The ISO was mentioned in more than 5,000 news reports. This media exposure assists in increasing overall brand awareness.



EARNED MEDIA



5,180
MENTIONS



\$17.4M
EARNED MEDIA VALUE



TOP PUBLISHERS



DISCOVERING NEW AUDIENCES ON SOCIAL MEDIA PLATFORMS

+1,523%
300 K+
TOTAL ENGAGEMENTS

+1,107%
8.37 M
IMPRESSIONS


+597%
129 K+
VIDEO VIEWS

+430%
50.1 K
LINK CLICKS

1.192 M REACH 139%
40.1 K FOLLOWERS

141,693 REACH 165%
12.8 K FOLLOWERS

TOP CITIES




INDIANAPOLIS | CARMEL
FISHERS | NOBLESVILLE | GREENWOOD

Note: Percentages show the year-to-year increase.

GOOGLE ANALYTICS

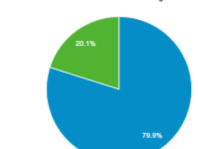
97%
year-to-year increase
WEBSITE USERS

66%
year-to-year increase
PAGE VIEWS



Users	New Users	Sessions	Number of Sessions per User	Pageviews
553,661	543,946	874,333	1.58	2,988,991
Pages / Session	Avg. Session Duration	Bounce Rate		
3.42	00:02:55	38.68%		

■ New Visitor ■ Returning Visitor



SUMMARY OF FINANCIAL POSITION

(In thousands of dollars)

ASSETS

Cash	5,519	6,242
Pledges & Other Receivables (net)	2,794	4,217
Prepaid Expenses & Other Assets	961	489
Property & Equipment (net)	1,715	2,116
Interest in Net Assets of the ISO Foundation	117,564	120,029

TOTAL ASSETS

	August 31 2022	August 31 2021
TOTAL ASSETS	128,553	133,093

LIABILITIES

Accounts Payable & Accrued Expenses	1,828	1,658
Other Liabilities	383	376
Deferred Revenue	2,756	1,643
Bank Line of Credit		123
Bank Note Payable		2,500
Pension Liability	1,732	970

TOTAL LIABILITIES

TOTAL LIABILITIES	6,699	7,270
--------------------------	--------------	--------------

NET ASSETS

Without Donor Restrictions

General Operating	4,231	4,399
Pension Plan	(2,659)	(1,896)
Total Net Assets Without Donor Restrictions	1,572	2,503

With Donor Restrictions

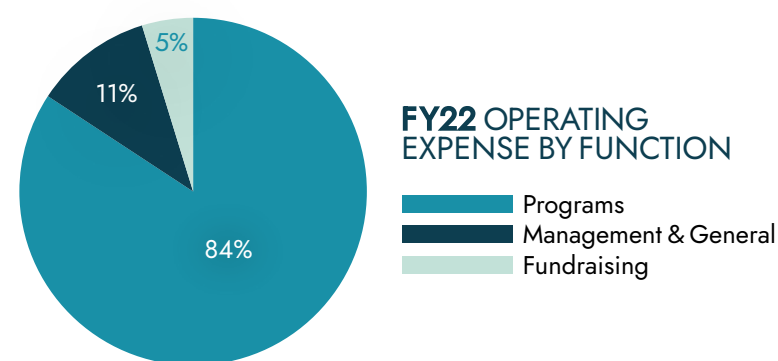
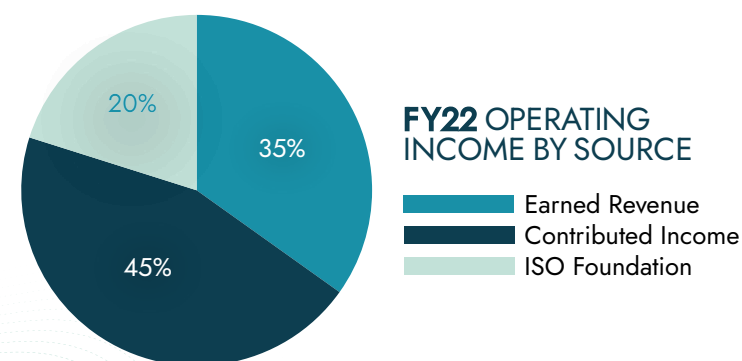
Society	2,718	3,291
ISO Foundation	117,564	120,029
Total Net Assets With Donor Restrictions	120,282	123,320

TOTAL NET ASSETS

TOTAL NET ASSETS	121,854	125,823
-------------------------	----------------	----------------

TOTAL LIABILITIES AND NET ASSETS

TOTAL LIABILITIES AND NET ASSETS	128,553	133,093
---	----------------	----------------



SUMMARY OF OPERATING RESULTS AND CASH FLOWS

(In thousands of dollars)

REVENUE

Earned Revenue

Ticket Sales & Fee Income	7,119	2,897
Rental Income	607	235
Program Advertising	54	
Education	44	54
Other Earned Revenue	34	15

Total Earned Revenue

	August 31 2022	August 31 2021
Total Earned Revenue	7,858	3,201

Contributed Income

Annual Fund	6,643	7,032
COVID-19 Funding	3,507	9,853
Total Contributed Income	10,150	16,885

ISO Foundation

ISO Foundation	4,680	4,537
-----------------------	--------------	--------------

TOTAL REVENUE

TOTAL REVENUE	22,688	24,623
----------------------	---------------	---------------

EXPENSES

Orchestra Operations	8,759	3,039
Concert Production	6,168	1,883
General & Administrative	2,152	1,931
Marketing	1,340	662
Facilities	1,837	1,209
Development	1,050	945
Learning Community	379	521
Patron Services	488	200
Depreciation	447	484
Other	182	40

TOTAL EXPENSES

TOTAL EXPENSES	22,802	10,914
-----------------------	---------------	---------------

CHANGE IN NET ASSETS BEFORE

NONOPERATING LOSS

Loss on Disposal of Property & Equipment	(54)	(68)
--	------	------

CHANGE IN NET ASSETS, GENERAL OPERATING

CHANGE IN NET ASSETS, GENERAL OPERATING	(114)	13,709
	(168)	13,641

ADJUSTMENTS TO CALCULATE NET CASH FLOW

Depreciation Expense	447	484
Capital Expenditures	(100)	(606)
Advances/(Payments) on Intercompany Loans, net		(250)
Advances/(Payments) on Debt, net	(2,623)	(4,420)
Forgiveness of Debt		(2,929)
All Other Cash Flows, net	1,721	(139)

NET CHANGE IN CASH

NET CHANGE IN CASH	(723)	5,781
---------------------------	--------------	--------------

DEVELOPMENT NEWS



SUPPORTING THE ISO

The ISO Development team raised
\$6,828,177
 from individuals, corporations, foundations, government, special events, and other sources.

CELEBRATING ISO CORPORATE PARTNERS



"Huntington is proud to partner with the Indianapolis Symphony Orchestra by supporting two longtime Central Indiana traditions, AES Indiana Yuletide Celebration and Kroger Symphony on the Prairie. Huntington believes that supporting organizations like the ISO enriches peoples' lives, strengthens our community, and contributes to a thriving business environment."



Joe Breen
 Regional President
 for Huntington Bank

MARIANNE WILLIAMS TOBIAS MATCHING CHALLENGE



This past year, **Marianne Williams Tobias** generously offered to match all gifts up to \$100,000 during the summer of 2022. Because of her gift, the ISO went above the goal of \$100,000 and raised \$105,550 from over 300 people.

FORTE RETURNS



For the first time since 2019, the FORTE Young Professionals group returned to a complete offering of events in the 2021-2022 season. With ISO staff member **Tim Stephenson** and former staffer **Katie Buczek** at the helm, FORTE was reintroduced to the Indianapolis community with a new brand and a new mission: to develop a network of supporters for the ISO by offering engaging, symphony-focused opportunities for young professionals. FORTE ended the fiscal year 2022 with just under **100** members, having hosted seven events in as many months and with a Leadership Team bolstered by three newly engaged Indianapolis young professionals.



"As a FORTE member, you really have the opportunity to expand your network. And you're meeting people from a variety of industries and a variety of backgrounds, all coming together to enjoy classical music."

Julian Winborn
 FORTE Leadership Team



WHY WE SUPPORT THE ISO

"We fully believe that the Indianapolis Symphony Orchestra is a necessary component of the culture of a community. The Indianapolis Symphony, along with multiple theater groups in Indianapolis and Bloomington, where we live, serve a vital and fundamental service. All of these groups bring color, excitement, and anticipation to our lives.

We love the Indianapolis Symphony and the feelings it stimulates in our souls. From a Mozart or Beethoven or Rachmaninoff piece to rousing Pops concerts to movies with fabulous accompaniment by our orchestra, we love them all. With the return of the Indianapolis Symphony and theater events, we feel elated and blessed by the color that has returned to our lives and the life of our community. We donate because we are able and wish to ensure, as best we can, that the Symphony will be here for future patrons and be here to stimulate the senses of others to respond as they are able."

David and Judi Chadwick

INDIANAPOLIS SYMPHONY ORCHESTRA ASSOCIATION

PEOPLE WITH PASSION FOR MUSIC



2021-22

\$140,000 PLEDGED

\$159,818.37 RAISED

11,328

ISOA VOLUNTEER HOURS

\$339,281

VALUE OF VOLUNTEER HOURS

The Fall ISOA Fall Jubilee, "Champions for Music" was held on October 29, 2021, after three postponements (due to the pandemic) at the Indiana State Museum. Profits from the Jubilee were \$90,000.00+. The Metropolitan Youth Orchestra benefited from this fundraiser.

A new and very different ISOA Spring Fundraiser, "An Afternoon with the ISO's Mighty Wurlitzer Organ," was held at the Hilbert Circle Theatre on Sunday, April 24, 2022. It was also a time to celebrate the ISOA's 85th Anniversary. A reception in the Wood Room followed the wonderful performance of Jelani Eddington on the Mighty Wurlitzer. The fundraiser profited \$11,000.00 with proceeds dedicated to the *Discovery Concerts* and *Symphony in Color*.

METROPOLITAN YOUTH ORCHESTRA



138 Participants	1,743 Lesson Hours
65 Playing Parents	18 Performances <small>recitals, concerts, & chamber gigs</small>
430 Rehearsal Hours	62 Teacher Mentoring Hours
20 Teaching Artists	378 Instruments <small>transported, numbered, labeled, & tagged into MYO's inventory system</small>



Under the leadership of Director Krystle Ford, the Metropolitan Youth Orchestra continued to offer musical education and mentoring throughout the year. MYO students and alumni paid a heartfelt tribute to beloved MYO founder Betty Perry shortly before her passing in February 2022. Betty Perry's legacy lives on through the hundreds of MYO students, families, instructors, and alumni who benefit from her vision in myriad ways.



THANK YOU TO OUR VOLUNTEERS

The ISO is grateful to our volunteers and recognizes the efforts of the Operations team to recruit and nurture hundreds of the volunteers who make our work possible. Volunteers provide an invaluable service to the ISO and our patrons throughout the year.

2022
VOLUNTEERS

217
COOKIES & COCOA VOLUNTEERS

13
POPCORN VOLUNTEERS

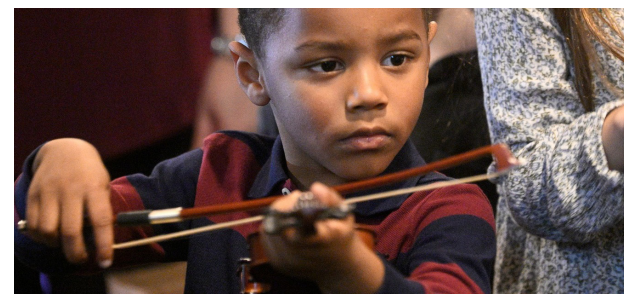
223
CURRENT ACTIVE VOLUNTEERS

9,936 TOTAL VOLUNTEER HOURS
\$297,583 VALUE

LEARNING COMMUNITY



The ISO's Learning Community hosted a *Discovery Concert*, "From the Earth to the Moon and Beyond", in Spring 2022, marking the in-person return of the educational program presented by Community Health Network. Former Resident Conductor Jacob Joyce led the ISO for the performance before a limited audience.



Beginning in January 2022, the popular *Teddy Bear Series* program for young children, presented by the Indianapolis Colts, offered the first in-person events since 2020. Featuring ten events at partner sites throughout the central Indiana community, children ages three to seven enjoyed interacting with ISO musicians and learning hands-on about instruments through engaging stories written by ISO violinist Victoria Kintner Griswold.



MUSICIANS OF THE ISO

FIRST VIOLIN

Kevin Lin, *Concertmaster*
Peter Vickery, *Assistant Concertmaster, The Meditch Chair*
Michelle Kang, *Assistant Concertmaster, The Wilcox Chair*
Vincent Meklis, *Acting Assistant Concertmaster*
Philip Palermo, *Associate Concertmaster Emeritus*
Michelle Black
Sophia Cho
Clement Luu
Joseph Ohkubo**
Marisa Votapek
Wei Wei
Hán Xiè

SECOND VIOLIN

Mary Anne Dell'Aquila, *Acting Principal*
Sherry Hong, *Acting Associate Principal*
Jennifer Farquhar, *Acting Assistant Principal, The Taurel Chair*
The Dick Dennis Fifth Chair*
Melissa Deal
Yeajin Kim
Victoria Kintner
Hua Jin
Jayna Park
Lisa Scott
Byul (Bella) Seo
Viola
Yu Jin, *Principal, The Schlegel Chair*
Amy Kniffen, *Acting Associate Principal*
Zachary Collins, *Acting Assistant Principal*
Emilee Drumm**
Yang Guo
Terry E. Langdon
Li Li
Patrick Miller**

CELLO

Austin Huntington, *Principal*
Jung-Hsuan (Rachel) Ko, *Acting Associate Principal*
Nicholas Donatelle, *Acting Assistant Principal*
CJ Collins**
James Cooper
Stephen Hawkey
Jonah Krolik
Sam Viguerie

CONTRABASS

Ju-Fang Liu, *Principal*
Robert Goodlett II, *Assistant Principal*
Mitchell Ballester
Sharif Ibrahim
Brian Smith
Bert Witzel

FLUTE

Karen Evans Moratz, *Principal, The Sidney and Kathy Taurel Chair*
Allistair Howlett**
Rebecca Price Arrensen, *Assistant Principal*

PICCOLO

Rebecca Price Arrensen
The Janet F. and Dr. Richard E. Barb Chair

OBOE

Jennifer Christen, *Principal, The Frank C. Springer Jr. Chair*
Sharon Possick-Lange
Roger Roe, *Assistant Principal*

ENGLISH HORN

Roger Roe, *English Horn*
The Ann Hampton Hunt Chair

CLARINET

Samuel Rothstein, *Acting Principal*
Cathryn Gross, *The Huffington Chair*
Campbell MacDonald,**
Acting Assistant Principal

BASS CLARINET

Campbell MacDonald**

BASSOON

Ivy Ringel, *Principal*
Michael Muszynski
Mark Ortwein, *Assistant Principal*

CONTRABASSOON

Mark Ortwein

HORN

Robert Danforth, *Principal, The Robert L. Mann and Family Chair*
Richard Graef, *Assistant Principal*
Julie Beckel
Alison Dresser, *The Bakken Family Chair*
Jill Boaz

TRUMPET

Conrad Jones, *Principal*
The W. Brooks and Wanda Y. Fortune Chair
Daniel Lewis**
Allen Miller,** *Acting Assistant Principal*

TROMBONE

K. Blake Schlabach+
Ryan Miller,** *Acting Principal*
Joseph Aumann,** *Acting Assistant Principal*

BASS TROMBONE

Riley Giampaolo, *The Dr. and Mrs. Charles E. Test Chair*

TUBA

Anthony Kniffen, *Principal*

TIMPANI

Jack Brennan, *Principal*
The Thomas N. Akins Chair
Craig A. Hetrick, *Assistant Principal*

PERCUSSION

Braham Dembar, *Principal*
Alison Chorn**
Pedro Fernández+
Craig A. Hetrick

HARP

Wendy Muston**
The Walter Myers Jr. Chair

KEYBOARD

The Women's Committee Chair Endowed in honor of Dorothy Munger

LIBRARY

James Norman, *Principal Librarian*
Laura Cones, *Assistant Principal Librarian*
Susan Grymonpré, *Assistant Librarian*
Bill Shotton, *Bowing Assistant*

PERSONNEL

Philomena Duffy, *Director of Orchestra Personnel*
L. Bennett Crantford, *Assistant Orchestra Personnel Manager*

STAGE

Kit Williams, *Stage Manager*
P. Alan Alford, *Technician*
Steven A. Martin, *Technician*
Patrick Feeney, *Technician*

*The Fifth Chair in the Second Violin Section is seated using revolving seating. String sections use revolving seating.

**Temporary Contract. +Leave of Absence

BOARD OF DIRECTORS

OFFICERS

Yvonne H. Shaheen, *Chair*
 Greg Loewen, *Vice-Chair*
 James M. Johnson, *Chief Executive Officer*
 Christina Bodurow, Ph.D.,
Secretary
 Peter W. Howard, Ph.D.,
Treasurer

BOARD OF DIRECTORS

Michael Becher*
 Christina Bodurow*, Ph.D.
 Jennifer Christen-Howlett
 Kiamesha Colom
 Cheryl J. Dick
 Craig Fenneman
 Natalie Furney
 Robert Goulet
 Peter W. Howard*, Ph.D.
 Sean Huddleston, Ph.D.
 James M. Johnson*
 Phil Kenney*
 Liz Kyzr
 Karen Ann P. Lloyd
 Greg Loewen*
 Lucia Mar
 Bruce McCaw
 Karen H. Mersereau
 Peter A. Morse Jr.*

Jackie Nytes*
 Eloise Paul
 Jan Pierce
 Steve Rake
 Alice K. Schloss
 Yvonne H. Shaheen*
 Christopher Slapak
 Brian Smith
 J. Albert Smith Jr.
 Terry Snell
 Sarah Studzinski
 Marianne Williams Tobias
 Yecenia Tostado
 LaTonya Turner, Ph.D.
 David Wilcox
 Fred Winters
 C. Daniel Yates
 James C. Zink Sr.

BOARD OF TRUSTEES

John M. Mutz, *Chair*
 Robert A. Anker
 Charlene Barnette
 Stephen E. DeVoe
 Rollin M. Dick
 Carolyn S. Hardman
 Ann Hampton Hunt
 Kay Koch
 Gordon E. Mallett, Ph.D.
 Charles O'Drobinak
 Dr. Charles H. Webb Jr.

*Executive Committee

CURRENT ADMINISTRATION & STAFF OF THE ISO

EXECUTIVE OFFICE

James M. Johnson, *Chief Executive Officer*
 Lee Ann Hall, *Assistant to the CEO*

VENUE OPERATIONS

Graeme Bice, *Vice President of Venue Operations*
 Kalyn Smith, *Director of Event Operations*
 Jensen Swaim, *Operations Coordinator*
 Alissa Britigan, *Event Manager*
 Alyssa Brooks, *Manager of Special Events & Rentals*
 Rodney Gray, *Food & Beverage Manager*
 Roberto Tapia, *Day Porter*

ARTISTIC ADMINISTRATION

Edward Parsons, *Vice President of Artistic Operations*
 Erin Casler, *Director of Orchestra Operations*
 Philomena Duffy, *Director of Orchestra Personnel*
 Milner Fuller, *Manager of Classical Programming*
 Ty A. Johnson, *Senior Director, Pops Programming and Presentations*
 Brandy Rodgers, *Senior Manager of Pops, Yuletide Celebration & Symphonic Pops Consortium*
 Matthew Creek, *Pops and Presentations Coordinator*
 Bennett Cranford, *Assistant Orchestra Personnel Manager*

DEVELOPMENT

Stephanie Hays-Mussoni, *Vice President of Development*
 Rose Branson, *Director of Annual Giving & Donor Communications*
 Maggie Butchko, *Director of Corporate and Foundation Giving*
 Kelli Dawson, *Associate Director of Corporate and Foundation Giving*
 Kellie Kierce, *Assistant Director of Individual Giving*
 Liz Marvin, *Assistant Director of Individual Giving*
 Tim Stephenson, *Assistant Director of Individual Giving*
 Kyra Kissel, *Donor Stewardship & Development Events Manager*
 Kathryn Thomas, *Corporate Stewardship Manager*
 Kara Sudheimer, *Gift Processor & Development Database Manager*

MARKETING AND COMMUNICATIONS

Sara Galer, *Vice President of Marketing & Communications*
 Mary Ferguson, *Director of Analytics & Database Management*
 Jen Huber, *Communications Content Manager*
 Luke Cooley, *Senior Graphic Designer*
 Olivia Burl, *Graphic Designer*
 Paige Grimmer, *Digital Marketing & Communications Manager*
 Erin Jeffrey, *Content Strategist*
 Marianne Williams Tobias, *Program Book Annotator*

PATRON SERVICES

Elizabeth Whipkey, *Director of Ticket Services*
 Trevor Conerly, *Customer Care Representative*
 Janine Knuutila, *Customer Care Representative*
 Isabelle Kohlberg, *Customer Care Representative*
 Kim Lynch, *Customer Care Representative*
 Nick Neukom, *Customer Care Representative*
 Lakin Schoen, *Customer Care Representative*
 McKenzie Witherell, *Customer Care Representative*

EDUCATION AND COMMUNITY ENGAGEMENT

Nicha Stapanukul, *Director of Education and Community Engagement*
 Krystle Ford, *Director of Metropolitan Youth Orchestra*
 Stevie Cox, *Education Programs and Communications Manager*

FINANCE

Jennifer Janik, *Vice President of Finance & CFO*
 Adam White, *Controller*
 Christopher Bowen, *Staff Accountant*
 Nate Rushton, *Staff Accountant*

HUMAN RESOURCES

Larry R. Baysinger, *Vice President of Human Resources*
 Melissa Sanders, *Human Resources Generalist & Wellness Advocate*





THANK YOU TO OUR GENEROUS SUPPORTERS

Gifts received in fiscal year 2022 between Sept 1, 2021–Aug 3, 2022

\$100,000 & ABOVE

Anonymous
Robert and Alice Schloss
Marianne Williams Tobias

AES Indiana
Central Indiana Community
Foundation
The Christel DeHaan Family
Foundation
Eli Lilly and Company
Foundation
FEMA
Indianapolis Symphony
Orchestra Association
The Kroger Co.
Lilly Endowment, Inc.

FOUNDERS' SOCIETY, MUSIC DIRECTOR \$50,000 & ABOVE

The Kenney Family
Kay Koch
Sarah and John Lechleiter
Yvonne H. Shaheen

The Arts Council of Indianapolis
Bank of America
BMO Harris Bank
Huntington National Bank
Indianapolis Colts
The Jewish Federation of
Greater Indianapolis
Kaleidoscope Youth
Education Center
Margot L. and Robert S.
Eccles Fund
Printing Partners

FOUNDERS' SOCIETY, CONCERTMASTER \$20,000 to \$49,999

Anonymous
Michael and Mary Jane Becher
Thomas and Dawn Bennett
Christina Bodurow
Charles and Joyce Boxman
Thomas and Victoria Broadie
Daniel and Judith Carmichael
Craig and Mary Fenneman

Steve Hamilton and Keith
Norwalk
Carlyn Johnson
Peg Kimberlin
Dr. Ned and Martha Lamkin
Bruce and Jamie McCaw
Jackie Nytes
Christopher Slapak and
Michael Robertson
Maribeth and Al Smith
Eugene and Dorothy Van Hove
Martin and Mary Walker
David and Eleanor Wilcox
Kathy and Ralph Wilhelm
William and Roberta Witchger

Barnes & Thornburg LLP
The Brenner Family
Foundation, a fund of
Hamilton County
Community Foundation
The Clowes Fund
Corteva Agriscience
Fenneman Family Foundation
Glick Family Foundation
Hamilton County Community
Foundation
The Martin D. & Mary J. Walker
Charitable Foundation
National Endowment for the Arts
Nicholas H. Noyes, Jr.
Memorial Foundation
OneAmerica Financial
Partners, Inc.

FOUNDERS' SOCIETY, FIRST CHAIR \$10,000 to \$19,999

William and Angela Corley
Daniel Corrigan
Trent and Amy Cowles
Steve and Mary DeVoe
Rollin and Cheri Dick
Dr. Norman and Adrienne Fogle
Mark and Dianne Foglesong
John and Chi Chi Guy
Donald and Carolyn Hardman
Fred Hecker
Emily and Peter Howard
Dr. Ann H. Hunt

Ned and Wendy Kirby
Eugene and Cathy Kroeff
Gregory and Alexandra
Loewen
Eleanor Lopez
Karen Mangia
Karen Mersereau and Dr.
Michael Helms
Jim Miller
Pete and Elizabeth Morse
Dr. Phillip and Beth Mosbaugh
Mark and Kate Mutz
Eloise Paul and Bill Lee
Scott Putney and Susan
Sawyer
Alan and Deborah Rasper
Kenneth and Debra Renkens
Mary Frances Rubly
Steve and Margaret Russell
Larry and Sandra Speer
Ann Stack
Randall and Deborah Tobias
Frederick and Jacquie Winters
Marion Wolen
Christian Wolf and Elaine
Holden
Jim and Rita Zink

The Ackerman Foundation
Cardinal Spirits
Care Institute Group
Dynamark
E & J Gallo Winery
Frenzel Family Charitable
Lead Trust
Garmong Construction
Indiana Members Credit Union
James O. & Alice F. Cole
Foundation
JP Morgan Chase & Co.
Lacy Foundation
Telamon Corporation

FOUNDERS' SOCIETY \$5,000 to \$9,999

Anonymous (3)
Jeffrey and Wendy Adams
Robert and Pat Anker
Robert and Jennie Beth Baker
Douglas and Deborah Balogh

Charlene and Joe Barnette
Sarah Barney
James and Lynda Beckel
Elaine and Eric Bedel
John C. Bloom
Eleanor Bookwalter
Robert and Terry Bowen
John and Nancy Bratt
Charles W. Brown
Gordon Bruder and Celia
Surface-Bruder
Clarence and Patricia Byers
John and Sheila Callaghan
John and Tammy Campbell
Dexter and Rosemary Cooley
Rick and Jody Dennerline
Carol Dennis
Scott and Erin Dorsey
Craig and Elizabeth Dykstra
Tom and Judy Eggers
Dr. Thomas and Paula Elam
Jamie Ellis
Dean and Beth Flaris
Larry and Carol Franks
Otto Frenzel IV
Natalie Furney
Charles and Susan Golden
Robert Goulet
Thomas and Mary Grein
Robert Hallam
Henry Havel and Mary
Stickelmeyer
Gregory Henneke and
Martha O'Connor
W. Seymour and Rheta Holt
Sean Huddleston
Larry and Annette Hutchison
Rhonda Kittle
James M. Johnson and
Jennifer B. Katz
Wayne and Deborah Johnson
Viviana and Dimitri
Koukoulomatis
Joseph and Linda Lanning
Karen Ann Lloyd and Kara
Jenkins
Jim and Sarah Lootens
Gordon Mallett
Malcolm and Joyce Mallette
Terry Moore

Dr. Daniel Mowrey
John and Carolyn Mutz
Carl and Loui Nelson
Thomas and Stacy O'Leary
Jane Paine
Jack and Katie Patterson
Robert and Kathleen
Postlethwait
Larry and Nancy Pugh
Steve and Tricia Rake
Jeff Reider and Brad Akerman
Jean Richcreek
Jay and Nancy Ricker
Marcia and Gavin Roberts
Randall and Diane Rowland
Cecil and Susan Salter
David and Marcia Sapp
Lei Shen and Soomin Park
Susanne and Jack Sogard
Dr. Pamela Steed
Mary Ann Thiel
John and Deborah Thornburgh
James and Linda Trippi
Pete and Lena Ward
David Whitman and Donna
Reynolds
Lynn and Andy Wiesman
Diana and Dan Yates
Barrie and Margaret
Zimmerman
John and Linda Zimmermann

Anonymous
American Endowment
Foundation
AYCO Charitable Foundation
Navient Community
Fund of the Delaware
Community Foundation
Deloitte LLP
Dorsey Foundation
F.A. Wilhelm Construction
Franklin Symphonic
Council, Inc.
The Indianapolis Foundation
Kinetico Quality Water Systems
KSM Business Services, Inc.
NextGear Capital
Nitorum Capital, L.P.
R.B. Annis Educational
Foundation

Raymond James Charitable
Endowment Fund
Renaissance Charitable
Foundation Inc.
The Rock Island Refining
Foundation
Ruth Lilly Philanthropic
Foundation
Salin Foundation
SEI Investments
Thompson Wealth
Management Group
University of Indianapolis

CONDUCTOR'S CIRCLE \$2,500 to \$4,999

Anonymous (2)
Michael and Amy Alley
Konrad Banaszak
Trudy W. Banta
Richard and Janet Barb
Spencer and Marcia Bavender
Brett and Shari Bayston
Mark Bear
Donald and Barbara Broadlick
Chuck and Shirley Cavalier
David and Judi Chadwick
Elizabeth Chamberlin
Douglas and Kathleen Church
Chris and Lesley Conrad
Gordon and Harriet Coppoc
Patrick Corsi
James and Barbara Curtis
Ann Dettwiler
Dan and Rebecca Dumbauld
Joyce Dwulet
Andrew and Irene Engel
Michael and Kathy Flaugh
Michael and Ardith
Fleetwood
Steve and Lisa Ford
L. D. and Janyce Foster
Dick and Brenda Freije
Steven Fry
D. Richard and Bonnie Garrett
Joseph and Kathy Grahn
Lauretta Gray
Robert and Barbara Gregory
Christian and June Gries
Kristine Isenberg

Louis Jungheim and
Thalia Nicas
Marc and Dana Katz
David and Gretta Kelly
Charles and Rebecca Kendall
Joseph G. Kinney
David H. Kleiman and
Susan Jacobs
Donald Knebel
Dr. Elisabeth Krug and
Roland Schaffer
Eli and Deborah Lilly II
Ralph and Nancy Lundgren
Alex and Bridget MacAllister
David and Barbara Malson
Benton and Sandi Marks
James and Cheryl Martin
Dr. Ronald and Linda Maus
Danelle Nance
Charles J. and Patricia
O'Drobinak
Robert and Terri Orr
Barbara Poulsen
Jeff and Clare Quinn
George and Peggy Rapp
Deborah Rawlings
Rich and Betty Lou Reasoner
Randall and Ann Riggs
Howard and Lori Rothstein
Roger and Barbara
Schmenner
Robert and Mary Shellman
Julian Shepard
Richard and Susan Simon
Jeff and Susan Smithburn
Gerald and Joanne Solomon
Judy Springmire
Bonnie H. Swaim
Diane G. Thompson
Terrence and Catherine
Thompson
Jerry and Linda Toomer
Nathaniel and Latonya Turner
Joseph and Diane Vande
Bosche
Daniel and Doris Weisman
Courtenay and Emily Weldon
William and Arlene Wheeler
James P. White

Robert and Marnie Wilken
Heather Willey
Vijay Mehta and Brittany Zarse

1816 Public Affairs Group
Ambrose Property Group
Anthem
Cavalier Family Foundation
Cornelius Family
Foundation, Inc.
CTI Construction, LLC
David and Arden Pletzer
Endowment Fund, a fund
of the Hamilton County
Community Foundation
Emmis Communications
Enterprise
Ice Miller
Irving Materials, Inc.
Joanne W. Orr Charitable
Johnson County Community
Foundation
Marian University
National Christian Foundation
National Philanthropic Trust
Deborah A. Rawlings
Revocable Trust
Spectrum Management
Group LLC
Taft Law
The Toomer Family Foundation
Zink Distributing Company

PRESIDENT'S CLUB \$1,500 to \$2,499

Anonymous (3)
William and Sacha Adams
Terry and Patricia Balko
Frank and Katrina Basile
Estate of Jerri Bastin
Elizabeth Beck
Eric and Erin Bell
Kirk and Sharon Boller
Douglas and Angela Braly
Dr. Mary Brunner and Dr.
Joseph M. Overhage
Kenneth and Patricia Burow
Vince and Robyn Caponi
Pat and Jennifer Cross
Bill and Laura Cummings



THANK YOU TO OUR GENEROUS SUPPORTERS

Gifts received in fiscal year 2022 between Sept 1, 2021–Aug 3, 2022

Douglas B. Day
 Manuel and Sara Debono
 Helen Dickinson
 Carmel Egan and Gerard Carthy
 William and Catherine Ehlhardt
 Linda Felton
 Pamela and Donald Fogle
 Jerry and Jan Gershman
 Steven and Chapel Givens
 Dr. Lawrence Goldblatt and Cassandra Goldstein
 James and Paula Hancock
 Richard and Karen Harrison
 Dennis and Amy Haworth
 Ginny Hodowal and Doug Madeley
 Howard and Mary Anne Hoffman
 Dr. David and Michele Imler
 Philip and Margaret Johnston
 Frederick and Anne Kelvin
 Richard and Susan Kent
 Ann W. King
 Rosemary L. Lafrance
 William and Katherine Landschulz
 Richard and Jan Lautzenheiser
 Jo Leshner
 Edward and Mary Leyes
 Dennis and Karen Licht
 Penelope Lumley
 Kevin Malley and Ronald Nobles
 Jon D. Marhenke, M.D.
 Douglas and Barbara Maxwell
 Dennis and Ann McCafferty
 Kellie McCarthy
 Myron McKee
 William and Wendy Messer
 Milton and Margaret Miller
 Robert and Cynthia Miller
 Daniel and Christine Mytelka
 Timothy Needler
 Guido and Brigitte Neels
 Jay and Sally Peacock
 Patricia Perkinson
 David and Carol Plouch
 Nancy Porter

Susan Porter
 Robert Potts
 Patricia Ragan
 Jay and Lyn Reece
 Susan Ridlen
 Robert S. Rifkin
 William and Gloria Riggs
 Byron and Marsha Robinson
 Peggy Robinson
 Sarah Rowland
 Jane Salin
 Bob and Holly Sieck
 Audrey Smith
 Don and Deborah Smith
 Rick and Gretchen Spaulding
 Shelley Stiner and Eric Bretzman
 Jim and Cheryl Strain
 Richard and Lois Surber
 Nela Swinehart and Lon Bayha
 Carol E. Taylor
 Jean Thompson
 John and Judy Tomke
 Stephen L. Tracy
 Scott Trometer
 Barbara Tully
 John and Kathy Vahle
 Don and Coleen Walker
 Dale and Joanna Weiler
 Emily A. West
 Mary Whalin
 Carl and Connie Wooldridge
 Bose McKinney & Evans
 Coca-Cola Consolidated, Inc.
 DB Engineering LLC
 Douglas and Angela Braly Family Foundation
 First Bank Of Richmond
 International Violin Competition of Indianapolis
 ISO Association East Group
 Living Waters Company Inc.
 Ogletree, Deakins, Nash, Smoak & Stewart
 Woodard Emhardt Henry Reeves & Wagner

SYMPHONY CLUB
\$1,000 to \$1,499
 Anonymous (2)
 Albert Allen
 Daniel and Kate Appel
 Teresa and John Ayres
 Richard and Tamara Bailey
 Ronald and Helmi Banta
 Charles Bantz and Sandra Petronio
 Jon Barber and Kelis Benitez Aviles
 Roger and Barbara Barksdale
 Pantila and Daniel Bateman
 William and Martha Batt
 Scott and Amy Beattie
 Sarah Binford
 Robert Bly
 Carolynne Bobbitt
 Chris and Barbara Bodem
 Eldoris Borst
 Erv and Priscilla Boschmann
 William and Sheila Bosron
 Charles and Cary Boswell
 Stephanie and Craig Brater
 Mark Bromund
 Alice Brown and Randy Trowbridge
 Dr. Presley and Mickey Buntin
 Jack and Pam Burks
 Ben and Pat Bush
 Donald Buttrey
 Judith Capawana
 Steve and Kimberly Chatham
 Janet Cheek
 Drs. Lisa and Ray Childers
 David and Stephanie Clements
 Henry Cobbs
 James and Kathleen Cornelius
 Raymond Cox
 Clinton and Stephanie Cragen
 Dave and Christie Crockett
 John and Kathleen Crone
 Brian and Elizabeth Davidson
 Douglas Davies
 David and Consuelo Davis
 Gregory and Debra Davis
 Anne N. DePrez
 Frank and Norah Deane
 Ken and Kitty Decker

Julie and David DeWitt
 Doug Dilling
 Daniel and Virginia Dolezal
 Davd and Denise Donley
 Chris and Amy Eddy
 Estate of Earl Harris
 Richard Farmer
 David and Phyllis Fee
 Carol Feeney
 Dr. Harvey and Phyllis Feigenbaum
 Gracia and James Floyd
 Eric and Veronica Foote
 Mary Forster
 Kenneth Frazza
 Edwin Free III and Cynthia Zweber-Free
 David and Ann Frick
 David Fronck
 James Gallagher
 Garth and Christine Gathers
 Steven Giovangelo and Gerald Bedard
 Scott Goldsmith and Amy Perry-Goldsmith
 Ray Gotshall and Jean Patton
 Nancy Harrison
 Greg Hausz and Debbie Perkins
 Hunter and Glenna Heath
 Lisa Heid
 Eugene and Helene Henn
 Ronald Hermeling
 Mark and Nancy Hershman
 Gerald and Hannelore Hinchman
 William and Patricia Kennedy Hirsch
 Carolyn J. Hodge
 Samuel and Adrienne Hodson
 Drs. Nicole and Bill Hoffmeyer
 The Hoover Family
 William and Peggy Hoover
 Bill and Nancy Hunt
 John and Liz Jenkins
 Gerald R. Jenn
 Walter G. Justus
 Mary Ann Kanervo

Robert S. Kaspar
 Troy and Bob Kassing
 Kimra Kidd and Tom Buehner
 Sheryl M. King, MD
 Dr. Richard and Anne Kohler
 Mary Kraft
 The Kruzels
 Sandy and Cindy Lange
 Connie Latas
 Robert Lee
 Judy Livingston
 Dr. Trevor and Jenny Lloyd-Jones
 John J. Longfellow
 Michael and Jill Margetts
 Jeffrey and Christin Marks
 James and Rita Martin
 Elaine Massey
 Morris and Janis Maurer
 Stacy A. Maurer
 Doris McCullough
 John and Ann McGrath
 Patrick McHugh
 Alan and Ann McKenzie
 Marni McKinney
 Darrin and Julia Meacham
 Allen and Deborah Miller
 David Moore
 Jim and Jackie Morris
 Nancy A. Morris
 Delores Muller
 William and Elizabeth Murphy
 Byron and Peggy Myers
 Joanna Myers
 Blake and Carolyn Neubauer
 Will Nevins
 Jane Nolan
 Lara Noren
 Ralph Nowak
 Ralph Oberlander
 Linda Osborne
 Frank and Sarah Otte
 Bart Peterson and Amy Minick Peterson
 Margaret A. Piety
 Melvin and Judith Pleiss Jr.
 Roger and Anna Radue
 Drs. Randall and Cynthia Reed
 Barb and Tom Reed
 Jason and Jamie Rich
 N. Clay and Amy Robbins

Judith L. Robertson
 The Rudin Family
 John and Kathy Rufatto
 Thomas and Linda Sands
 Ian Scharrer
 John A. Seest
 Jerry and Rosemarie Semler
 Paul and Mary Sheets
 Robert and Denise Silbert
 Vona Sinclair
 Jeffery and Christy Soldatis
 Steve Spaulding and Jennifer Hendrian
 Christopher Stack, M.D.
 Santha S. Stall
 Bill and Mary Lou Stanley
 Betty Stevens
 Ruth E. Stilwell
 Tien S. Sun
 Stephanie Sweetana
 Sally Syljebeck
 L. Gene Tanner
 Phillip Terry
 William and Karen Thompson
 Douglas L Tillman
 Karen and M. Kim Vail
 William and Emily Ward
 Beverly Watkins
 Jennifer Weiler and Michael Patterson
 Louis and Laura Wenzler
 Philip and Shandon Whistler
 Johanna Will
 Meredith and Judith Wilson
 Richard and Beth Winegardner
 Robert and Deborah Wingerter
 James and Karen Wolf
 Teresa Youngen
 Melizza Zabel
 Larry and Karen Zimmerman
 Anonymous
 ADL Charitable Trust
 American Pianists Association
 Batt Family Foundation
 Benevity Community Impact Fund
 Elise Stefan Marshall Trust
 Gracia E. Johnson Foundation

Jenn Foundation
 Marni McKinney Foundation
 Morgan Stanley
 Paul Family Foundation, Inc.
 Penrod Society
 The Semler Family Foundation, Inc.
 Shaheen Family Foundation, Inc.
 True Tickets
 Zeta Phi Beta Sorority, Inc.
VIRTUOSO
\$750 to \$999
 Anonymous
 Michael and Mary Ellen Ball
 Jeri Dick Ballantine
 Michael Bartley
 Andrew Bauman
 Jonathon Begala
 Stephen and Deborah Benefiel
 Samuel and Carol Bixler
 Jennifer Browning
 Linda Cavanaugh
 Carol Chilcote
 Cary and Julie Curry
 Terry and Janet Doll
 Susan Due
 Ronald and Evelyn Dunn
 Wayne and Lynne Eckerle
 Charlotte Galloway
 Thomas and Nancy Grembowicz
 Dan and Vicky Hancock
 Eleanor and Joseph Hingtgen
 Clark C. Johnson
 Aldy and Natinne Keene
 Christa Key
 Richard and Gwen Knipstein
 Sanford Levinson
 Al and Joyce Long
 Veronica Lucci and Dr. Mark Kahn
 John and Kay Mastarone
 Ralph and Pat McCormick
 Bill and Jen McDonald
 Dr. Thomas and Anna Jo McKaig
 Suzanne McKee

James and Nancy McMillan
 F. Carl Miller Jr.
 Michelle Miller
 Dr. Patrick Murphy and Rita Jo Murphy
 Keith and Tammy Passwater
 Carole Sendmeyer
 Sarah Studzinski
 Mary Sturm
 Brian Swingle
 Ravi Talwar
 Jane Timms
 Matt and Kelly Ward
 Katherine V. Webb
 Amanda Yockey

CONTRIBUTED GOODS & SERVICES

Cardinal Spirits
 Coca-Cola Consolidated, Inc.
 Dynamark
 E&J Gallo Winery
 Kinetico Quality Water Systems
 Printing Partners
 Republic National Distributing Company
 Zink Distributing Company

FOREVER SOUND SOCIETY

Anonymous (2)
 Matthew Acton
 Art and Donna Adams
 Brenda E. Allen
 Judith Allen
 Tom and Mary Kay Anthony
 Jean Maschmeyer Bardonner
 Michael Bartley
 Pantila and Daniel Bateman
 Tola Begbaaji
 Frank Benkert
 Jerry and Donna Bond
 William and Sheila Bosron
 Charles and Cary Boswell
 Isabel Carter
 The Broach Family
 Kyle Brown
 Sarah Burton
 Dan and Diane Carman

THANK YOU TO OUR GENEROUS SUPPORTERS

Gifts received in fiscal year 2022 between Sept 1, 2021–Aug 3, 2022

Brian Carmien
Walter S. Chambers III
Carolyn S. Cook
Michelle L. Cramer
David and Brenda Day
Susan Due
Joyce Dwulet
James Ellis
The Filmore Family
Donna M. Flanagan
Cameron and Teresa Forbes
Erin Fortune
Michael and Jennifer
Franceschini
Kenneth Fraza
Brian and Claudia Grant
Wallace Gray
Christopher K. Harrison
Dan Hatcher
Dr. Michael Heck and
Dr. Peggy Stockdale
Jarrod M. Herrington
Bruce and Sue Hicks
Dr. Duane Hoak
Michelle Houston
Meredith and Michael Hurst
Sylvia Hyde
Stewart Irvin
Scott and Ann Jackson
John and Susanna Johnson
Ben and Cheryl Keckler
John and Mary Kincaid
Stephanie King
Jacque Kirsh
Janine Knuutila
The Kruzels
Jimmy Kulina and Angela Lopez
Marjorie Kurt
Faith Laird
Robin Lanning
Dan Laskowski and Dorota
Laskowska
Merri Lavagnino
Steven J. Lawson
Glenna and Erin Lee
Robert and Sandra Lehnen
Richard and Sandy Lenz
Lindsay Llewellyn
Lori A. Long
Linda Lough

Bethany A. Ludden
Debbra Lund
Donald and Ruth Ann
MacPherson
Keith and Sarah March
Philip and Mary Sue McAlister
Peggy McCracken
Maggie McGaughey
Stephen and Josephine
McGrew
Larry Messing
Nathanael D. Miller
Raymond Modesitt
Pete and Barbara Mohr
Jack Morgan
James and Tamie Morog
Sharon and Daniel Murphy
Roger and Leslie Nelson
Leesa Nesty
Thomas and Pat Nigh
Eric Oestrich
Lisa Patton
Rebecca Pearce
Pat Pickett
Rachel E. Pierce
Stephen and Vali Pisconski
Earl Pope
Daniel Powell and Linda
Mitchell
James and Patty Radlick
Patricia Ragan
John and Jean Raymann
Delia Robertson
Jim and Vickie Roe
David Rosenfield
William and Judith Rumbaugh
Tom and Laura Rydz
Gaston Sanchez Cano
Roxann K. Sanders
Phil and Elva Sarver
Michael Scherperel
Hohn Shearin
William and Priscilla Sheldrake
Elizabeth M. Sherman
Alan and Vida Smith
Brandon and Kim Smith
Phyllis J. Smith
Jason and Anne Snow
Bill and Mary Lou Stanley
The Stasila Family

Sue K. Staton
Richard and Evalyn Steininger
Craig Stewart and Marion
Krefeldt
David and Mona Swinehart
Nela Swinehart and Lon Bayha
Nathan Truitt
Barbara Tully
Thomas and Cynthia Uhrig
Joshua Lyn Varab
Nathan Warfel
Dale and Joanna Weiler
Jennifer Weiler and Michael
Patterson
Steve and Peggy Wheeler
Andrew and Angela
Wilkinson
Robert Willet
David and Eleanor Windisch
The Wood Family
Amanda Yockey
Nancy Zent

This listing reflects annual gifts received between September 1, 2021, through August 31, 2022, during the ISO's fiscal year.

Every effort has been made to ensure the accuracy of this listing. However, we apologize for any inadvertent errors or omissions. If there are questions about your listing, please contact Rose Branson, Director of Annual Giving and Donor Communications, at rbranson@indianapolissymphony.org or 317-742-9579.



"The ISO is fully committed to providing greater Indianapolis with the highest quality music experience. I encourage anyone who loves music (of any genre) to find a way to experience what the ISO is offering. I cannot thank you all enough for your patronage and support. Without that support, we would not be the world-class orchestra we are."

Ju-Fang Liu | Principal Contrabass



**INDIANAPOLIS
SYMPHONY
ORCHESTRA**