

2001

SAFARI



TREK



## *Think Small. Live Big.*

Trek for 2001 has a whole new look, inside and out. New exterior styling complements the designer interior featuring hand finished hardwoods and custom fabrics. So many features are packed into Trek that it is easy to forget its thrifty size.

Trek lives up to its reputation as the "Smart coach with a big attitude" by offering a wide array of amenities usually only found in larger coaches. Trek's exclusive "ElectroMajic™" overhead bed eliminates the need, and the length, of a longer coach. This innovative feature allows use of the bed at night and it "disappears" into the ceiling when not in use.

Comfortable barrel chairs and designer sofa make the living area especially inviting. Choose from four distinctive new decor interiors: Zambezi (Smoke), Ume (Green), Benin (Rust), and Togo (Blue). Pilot and co-pilot seats feature color coordinated fabrics and the new dash simplifies the driving effort.

Your year around comfort is assured with a 40,000 BTU LP furnace and 13,500 BTU ducted roof air conditioner. Trek's small size has another advantage: it will keep you cozy or cool regardless of the weather conditions outside.

Fun to drive and easy to own, Trek gives you full size class A living in a truly maneuverable length coach.





## *A ceiling by day - a bed by night*

With the simple push of a button, your queen-size bed appears, as if by magic, lowering automatically from the ceiling. In the upper photo, notice that the bed fits perfectly in the ceiling, unnoticed, out of the way until it's ready to use.

At bedtime, the push of a button lowers the exclusive ElectroMajic™ overhead bed to a convenient height, ready for a comfortable nights sleep or a quick afternoon catnap. Its full cab width means plenty of foot room for stretching out.

*The advantage:* You get the livable space of a much longer coach without the space necessary for a full bedroom. Abundant wardrobe closet space and extra drawers in the bath give plenty of space for life's necessities.

Thinking "small" can also include living "big," that's why Trek is known as the "smart" coach.



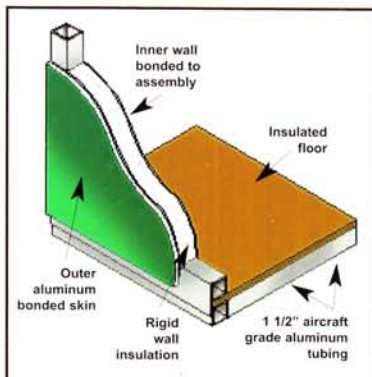
## A full-size chef's kitchen for your cooking and dining pleasure

Beautiful and durable solid surface Genovese™ countertops with a double molded sink accent the hand finished hardwood cabinets in Trek's galley and dining area. Beautiful raised panel Alder cabinetry with Golden Cherry finish add a distinctive touch and the many drawers will store all of your kitchen necessities with ease.

The hardwood floor adds warmth and durability to the chef's area and bright residential "cool white" lighting illuminates the dining and living area.



Coordinating hardwoods and fabrics make Trek's dinette a perfect complement to the coach's decor. An Atwood euro-style 3-burner cooktop is standard, as is the micro-convection oven.



## Single Piece Aluminum Skin

Safari is famous for its aircraft-grade aluminum construction techniques, and the outer skin of each coach is the frosting on the cake, so to speak. This single piece aluminum skin is utilized in a state-of-the-art bonding process that makes leaks virtually impossible. Plus, the lasting durability of aluminum and the beauty of a high gloss automotive grade paint finish will bring years of beauty and trouble-free maintenance.



Simply smooth aluminum . . . that's really light!



*Designer Package  
adds luxury features.*



Upgrade your Trek interior by choosing the Designer Package. Included in this special grouping are Fountainhead™ countertops, UltraLeather™ 6-way power cab seats, a special inlaid carpet design, and day/night pleated shades. It's the perfect way to give your coach a personal feeling with special luxury touches.



## Many new features upgrade the 2001 Trek

Sporty styling will get admiring stares and "can I see it?" requests from other RVers. This styling is enhanced by a backup camera that has improved night vision for after-dark parking. The dash has overhead defroster blowers and a privacy drape that is soft pleated fabric.

Be entertained with an on-board Sony® AM/FM radio with

CD or a 20" color Konka® TV. A Sony® 10-disc CD player or a Sony® 4-head VCR are optional. Keep your beverages handy with cup holders that are convenient to pilot and co-pilot chairs.

Trek is available in three floorplans with lengths of 24 and 28 feet.

## Trek 2001 Specifications

- Chassis - Workhorse P-32™ Front Engine
- Engine - 6.5L GM Diesel or  
454 CID Vortec Gasoline
- Horsepower - Diesel- 190 HP @ 3400 RPM  
Vortec Gasoline- 290 HP @ 4000 RPM
- Torque - Diesel - 385 ft-lbs @1700 RPM  
Vortec Gasoline - 410 ft-lbs @3200 RPM
- Transmission- GM Hydra-Matic 4L80E™ with 4-Speed Overdrive
- Tires- 225/70R - 19.51 (F)
- Holding Tanks- 40 gallon - Black, 40 gallon - Gray

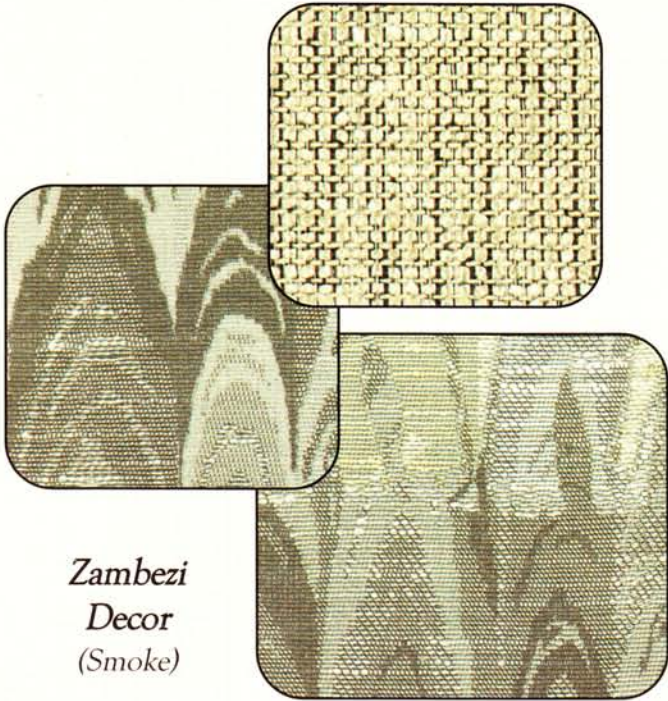


Cargo areas are made of easy-to-maintain fiberglass.

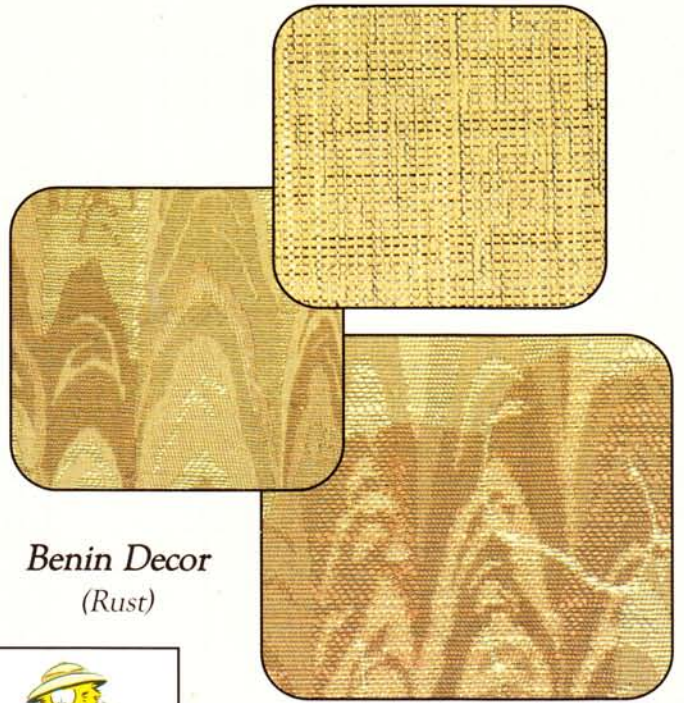


Big coach luxuries like a water manifold system are found on Trek.

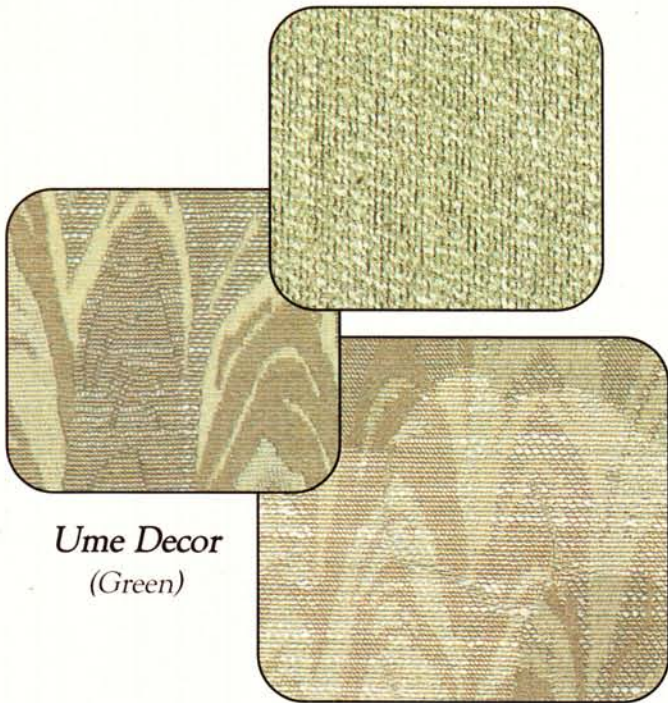
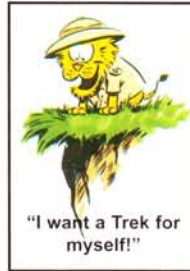
# 2001 Trek Decor selections



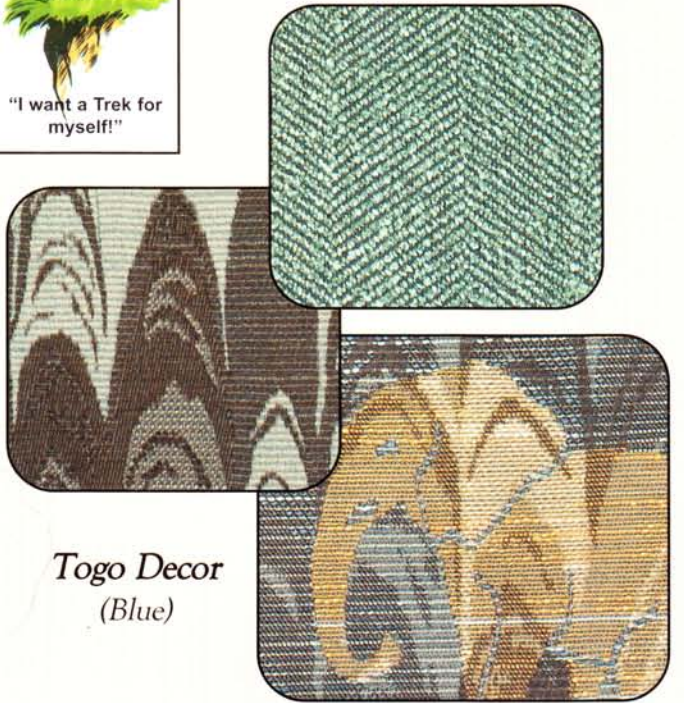
*Zambezi  
Decor  
(Smoke)*



*Benin Decor  
(Rust)*



*Ume Decor  
(Green)*



*Togo Decor  
(Blue)*

All specifications are subject to change without notice or obligation. Natural variations in shade, grain and pattern are characteristic of real hardwood and serve to enhance the beauty of the cabinetry. Fabric samples are for representation purposes only. Variations due to printing methods will cause some colors and patterns to change in appearance. Request to see actual fabric samples prior to placing an order.

See separate specifications sheet for floor plans, standard and optional equipment listings.



**Safari Motor Coaches, Inc.**

Mailing Address: P. O. Box 5639 · Bend, OR 97708

Street Address: 30725 Diamond Hill Road · Harrisburg, OR 97446

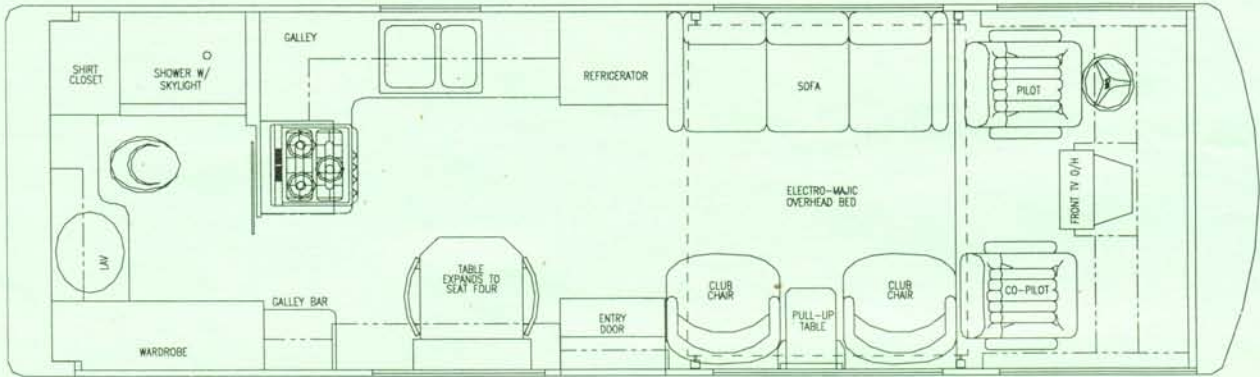
**800-458-8735**

[www.safarimotorcoaches.com](http://www.safarimotorcoaches.com)



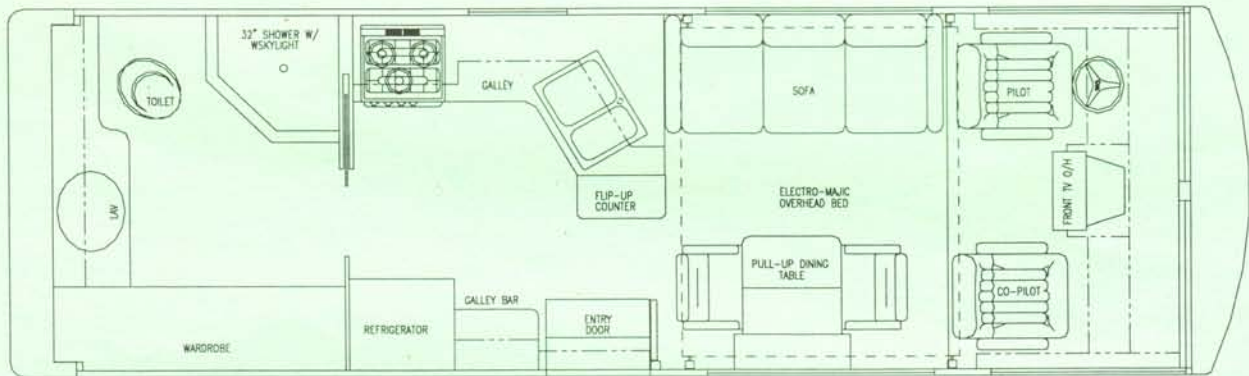


# 2001 **TREK** Floorplans



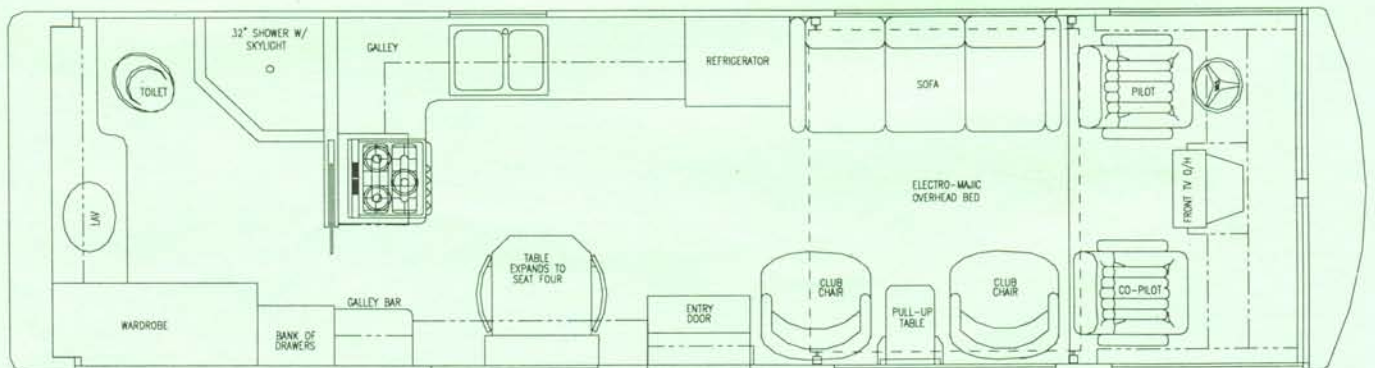
## **2430 Side Entry – Rear Bath**

Patented Electro-Majic Overhead Bed



## **2480 Side Entry – Rear Bath**

Patented Electro-Majic Overhead Bed



## **2830 Side Entry – Rear Bath**

Patented Electro-Majic Overhead Bed



## 2001 Specification Guide

# TREK

<b>Chassis</b>	Workhorse P-32™ Front Engine	
<b>Engine</b>	6.5L GM Diesel or 454 CID Vortec Gasoline	
<b>Horsepower</b>	Diesel - 190 HP @ 3400 RPM - 385 ft-lbs. @ 1700 RPM	
<b>Torque</b>	Vortec Gasoline - 290 HP @ 4000 RPM - 410 ft-lbs. @ 3200 RPM	
<b>Tires</b>	225/70R - 19.5 (F)	
<b>Transmission</b>	GM Hydra-Matic 4L80E™	
<b>Wheelbase</b>	158.5"	178"
<b>Height</b>	Exterior 11'1" Interior 6'6"	Exterior 11'1" Interior 6'6"
<b>Exterior Length</b> (Bumper to Bumper)	26' 10"	29' 3"
<b>GVWR</b>	14,800 lbs	16,500 lbs
<b>GCWR</b>	19,000 lbs	21,000 lbs
<b>Basement Cargo Area</b>	40 cu. ft.	46 cu. ft.
<b>Floorplans Available</b>	2430, 2480	2830
<b>Fresh Water</b>	80 gallons	
<b>Fuel</b>	60 gallons	
<b>Holding Tanks</b>	40 gallon - Black, 40 gallon - Gray	
<b>LP Gas Tank</b>	35 gallons	
<b>Air Conditioner</b>	DuoTherm™ 13,500 BTU Ducted Roof Air	
<b>Furnace</b>	40,000 BTU LPG Suburban® Furnace	
<b>Hot Water Heater</b>	6 Gallon LPG Suburban® Hot Water Heater	

### Chassis

5,000 lb. Hitch Receiver  
Basement Storage  
Enclosed Holding Tanks  
Four Wheel Anti-Lock Disc Brakes  
Stainless Steel Wheel Liners  
*Wide Track Chassis (2830 only)*

### Power Systems

(2) 12 Volt Deep Cycle House Batteries  
3.6 KW LPG Onan Microlite™ Generator  
(w/ P32 Diesel Chassis)  
4.0 KW Gasoline Onan Microlite™  
Generator (w/ P32 Vortec Chassis)  
Coach Monitor Panel  
Freedom 10™ 1000 Watt Inverter  
w/50 Amp Charger  
Solar Charging System (20 Watt Panel)

### Driving Comforts

*2-Speed Overhead Defrost Blowers*  
Automatic Transmission  
*Back-up Camera w/Enhanced Night Vision*  
Cruise Control  
Dash Air Conditioning and Heat  
Heated, Remote-Control Side View  
Mirrors w/ Turn Signals  
Scissors Style Sun Visors

### Entertainment

*20" Konka® Color Television in Living  
Room*  
Cable TV and Phone Hookup  
*Sony® AM/FM Dash Radio w/CD Player*  
Winegard™ TV Antenna and Booster

### Galley Features

8 Cu. Ft. Dometic® Refrigerator  
120 Volt Fluorescent Lighting  
*Atwood® Euro-style 3-Burner LPG Range*  
Expandable Dinette  
Fantastic Fan™  
Sharp® Carousel Micro-Convection Oven  
*Genovese™ Solid Surface Countertops  
w/Integrated Sinks*  
Power Range Hood

### Interior Features

*Fabric Soft Pleated Full Privacy Drapes*  
*Fantastic Fan™ Exhaust Vent in Bath*  
Halogen Map/Reading Lights  
Large Shower with Skylight  
Micro Mini-Blinds Throughout  
Patented ElectroMajic™ Overhead Bed  
w/Sleep Sac  
Plush Carpet Throughout  
*Raised Panel Tight-knot Alder\* Hardwood  
Cabinetry w/Golden Cherry Finish*

### Exterior Features

1 Piece Fiberglass (Kemlite®) Roof  
Aircraft Grade Aluminum Framed Laminated  
Side Walls  
Electric Exterior Power Step  
Full Fiberglass Front & Rear Caps with  
Integrated Bumpers  
Full Polystyrene Block Insulation in Roof,  
Walls and Floors  
Plumbing Manifold w/Individual Valve Controls  
Single Pane Windows

### Décor Groups

Benin - Rust  
Togo - Blue  
Ume - Green  
Zambezi - Smoke

### Pathmaker Package

3-Point Hydraulic Leveling System  
Dual Air Horns Mounted on Firewall  
Double Pane Windows with GL-20 Solar  
Privacy Glass  
*Carefree® Manual Patio Awning*

### Designer Package

6-way Power UltraLeather™ Cab Chairs  
Day/Night Pleated Shades in Living Room &  
Dinette  
Fountainhead® Solid Surface Countertops in  
Galley & Bath  
Inlaid Sculpted Carpet Design in Living Room

### Options and Upgrades

Add CB Radio  
Add Digital Satellite Entertainment System  
Upgrade for Fabric Recliner (n/a 2480)  
*Add Sony® 10-Disc CD Changer*  
Upgrade to UltraLeather™ Recliner (n/a 2480)  
*Add Sony® Stereo VCR*  
*Upgrade to Raised Panel Tight-knot Natural  
Walnut\* Cabinetry*  
Add Window Awning  
Upgrade to Wood Plank Floor in Galley & Bath  
Add Mural on Rear of Coach

# TREK

Revised July 31, 2000

Packages can not be split.

All specifications subject to change without notification or obligation.

*\*Natural variations in shade and pattern are a characteristic of real  
hardwood and serve to enhance the beauty of the cabinetry.*