

# CERTIFIED CORNER RECORDATION

Corner S13 | S18 / S19 T. 33 N. R. 25 W. P.M.M. LINCOLN County

I. Record: 1893 GLO Survey of the Horse Plains Guide Meridian by Peter M. Cardell and Abram L. Jaqueth; 80.00 chs. Set a post, 4 ft. long, 4 ins. square, 24 ins. in the ground, for Cor. to Secs. 13, 18, 19 and 24 marked T33N S18 on NE., R25W S19 on SE., R26W on SW. and S13 on NW. faces, from which:

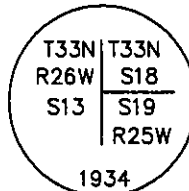
- A fir, 8 ins. diam., bears N78°E, 14 lks. dist., marked T33N R25W S18 BT.
- A tamarack, 10 ins. diam., bears S36°E, 32 lks. dist., marked T33N R25W S19 BT.
- A tamarack, 28 ins. diam., bears S26°W, 10 lks. dist., marked T33N R26W S24 BT.
- A black pine, 8 ins. diam., bears N66°30'W, 39 lks. dist., marked T33N R26W S13 BT.

1903 GLO Retracement and Resurvey of the Horse Plains Guide Meridian by Abraham L. Rinearson and Gordon C. Smith; 80.00 chains. Set a post, 3 ft. long, 4 ins. square, 24 ins. in the ground, for cor. of secs. 13, 18, 19 and 24 marked T33N S18 on NE., R25W S19 on SE., S24 on SW. and R26W S13 on NW. face; with 3 notches on N. and S. edges; from which:

- A pine, 9 ins. diam., bears N54°E, 51 lks. dist., marked T33N R25W S18 BT.
- A pine, 8 ins. diam., bears S85°E, 29 lks. dist., marked T33N R25W S19 BT.
- A pine, 7 ins. diam., bears S48°W, 38 lks. dist., marked T33N R26W S24 BT.
- A pine, 10 ins. diam., bears N54 1/2°W, 14 lks. dist., marked T33N R26W S13 BT.

The old corner, which is a post, marked and witnessed as described by the Surveyor General, I destroy it.

1934 GLO Retracement and Resurvey of the Horse Plains Guide Meridian by Philip L. Inch and Roy Romberg; 71.52 chains. The cor. of secs. 13, 18, 19, and 24 which is a pine post 4 ins. sq., 24 ins. above the ground, marked and witnessed as described in the official record, with the exception the all bearing trees are dead and fallen. This cor. will hereafter refer to secs. 13 and 24 only. 80.00 chains. Set an iron post, 3 ft. long, 2 ins. diam., 24 ins. in the ground, for the cor. of secs. 18 and 19, with brass cap marked.



From which:

- A tamarack, 20 ins. diam., bears N41 3/4°E, 52 lks. dist., mkd. T33N R25W S18 BT.
- A fir, 6 ins. diam., bears S66 1/4°E, 10 lks. dist., mkd. T33N R25W S19 BT.

Date of Fieldwork: 9/19/2005

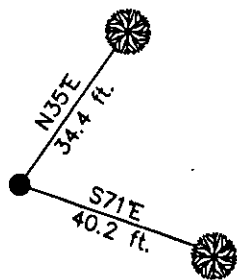
Survey crew: Tom Hommel

Magnetic declination: 20° East assumed

Equipment used: Hand compass and loggers tape

U.S. Forest Service, Supervisors Office, 1101 Hwy. 2 West, Libby, MT 59923 (406) 293-6211

Page 1 of 2



SKETCH OF CORNER

NOT TO SCALE

### CERTIFICATION

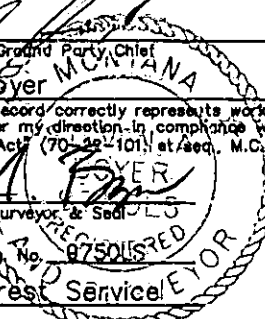
I, Thomas M. Hommel 10800LS  
certify the information shown herein is true and correct.

*Thomas M. Hommel*  
Signature Ground Party Chief

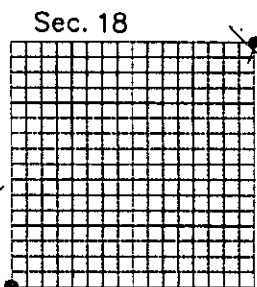
I, Steven A. Boyer  
certify that this Corner Record correctly represents work performed by me or under my direction in compliance with the "Corner Recordation Act" (70-22-101) et seq., M.C.A.

*Steven A. Boyer*  
Signature of Surveyor & Seal

Date: 12/8/2005 Reg. No. 8750  
Employer: U. S. Forest Service



Office of Clerk and Recorder, County of Lincoln This "corner record" was filed for record 192558 BOOK: CCR CC&R'S PAGE: 10912 Pages: 2  
was noted on the cross-in book No. \_\_\_\_\_ STATE OF MONTANA LINCOLN COUNTY  
RECORDED: 03/16/2006 10:33 KOI: CC&R'S  
CORAL M. CUMMINGS CLERK AND RECORDER  
FEE: \$0.00 BY: *Coral M. Cummings*  
TO: FILED



● corner this sheet

Cross Index No. N-1 T. 33N. R. 25W. P.M.M., MT

# CERTIFIED CORNER RECORDATION

Corner S13 | S18  
S19 T. 33 N. R. 25 W. P.M.M. LIINCOLN County

1961 BLM Remonumentation of Certain Corners along the Horse Plains Guide Meridian, by William E. Stephens and David R. Cuninghame; The cor. of secs. 18 and 19 only, on the W. bdy. of the Tp., monumented with a iron post, 36 ins. long, 2 ins. diam., marked as described in the official record, loosley set 15 ins. in the ground. From which the original bearing trees:

- A larch, 18 ins. diam., bears N39°E, 52 lks. dist., mkd. T33N R25W S18 BT.  
 (Record: N41 3/4°E, 52 lks. dist.)
- A stump, bears S72°E, 10 lks. dist., mkd. T33N R25W S19 BT.  
 (Record: S66 1/4°E, 10 lks. dist.)

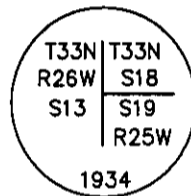
At the corner point  
 reset the iron post, 30 ins. in the ground, and in concrete.

from which:

A fir, 6 ins. diam., bears S70°E, 61 lks. dist., mkd. T33N R25W S19 BT.

Set a wooden post, 4 ft. long, 4 ins. diam., in the ground alongside the iron post. Collar of stone around the iron post.

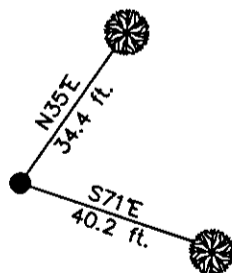
II. Found: A 2 in. diam. iron pipe, with a 2 1/2 in. diam. GLO brass cap flush with the ground, marked as shown below, from which:



A larch, 25 ins. diam., bears N35°E, 34.4 ft. dist., with 25 S18 BT visible.  
 A fir, 14 ins. diam., bears S71°E, 40.2 ft. dist., mkd. with a healed face.

III. Painted red the scribed faces and attached Land Survey Monument and Bearing Tree signs. Painted a 6 in. red band around the bearing trees.

Date of Fieldwork: 9/19/2005  
 Survey crew: Tom Hommel  
 Magnetic declination: 20° East assumed  
 Equipment used: Hand compass and loggers tape  
 U.S. Forest Service, Supervisors Office, 1101 Hwy. 2 West, Libby, MT 59923 (406) 293-6211



NOT TO SCALE

SKETCH OF CORNER

**CERTIFICATION**

I, Thomas M. Hommel 10800LS  
 certify the information shown herein is true and correct.

*[Signature]*  
 Signature, Ground Party Chief

I, Steven A. Boyer  
 certify that this Corner Record correctly represents work performed by me or under my direction, in compliance with the "Corner Recordation Act" (25-22-101, et seq., M.C.A.)

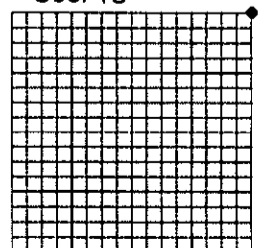
*[Signature]*  
 Signature of Surveyor & Seal

Date: 12/8/2005 Reg. No. 99750LS  
 Employer: U. S. Forest Service

Office of Clerk and Recorder, County of Lincoln This "corner record" was filed for record on \_\_\_\_\_ was noted on the cross-index plat and is assigned page No. \_\_\_\_\_, in book No. \_\_\_\_\_

County Official

Sec. 18



Cross Index No. N-1 T. 33N. R. 25W. P.M., MT