



Nostalgic touches abound in this farmhouse-inspired Memphis kitchen, including wide-plank oak floors, schoolhouse-style pendants, and brass accents. But homeowner and interior designer Lindsey Black also injected a dose of modernity. Bentwood barstools and casement windows divided with slender black muntins contribute a contemporary look.



A modern farmhouse kitchen featuring vibrant green cabinetry with brass hardware. A white marble island is topped with a brass faucet and a white pendant light with a brass chain. The backsplash is made of white subway tiles, and the floor is light wood. A window above the counter shows a view of greenery. On the counter, there are jars of grains, a bowl of lemons, and a small potted plant. A stainless steel refrigerator is visible on the right side of the frame.

# made in the JADE

*Colorful cabinetry sets the stage for a refreshing take on the classic American farmhouse kitchen.*

WRITER Sarah Egge  
PHOTOS Anthony Masterson  
FIELD EDITOR Andrea Caughey  
STYLIST Anna Forkum



THIS PHOTO: "I'm more of a cook-by-feel or cook-by-taste person. I use a recipe as a guideline," Lindsey says. So she wanted flavorful ingredients close to the cooktop. A long drawer holds spices, and a cabinet to the right of the range holds oils and vinegars. "That way I can use something and put it away quickly to keep the kitchen clean," she says.





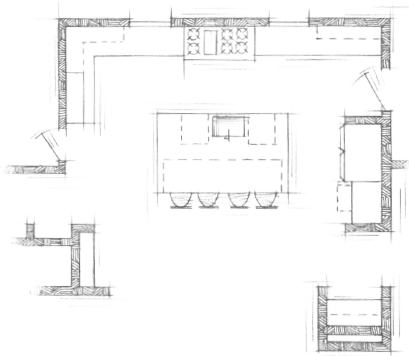
## WITH A POT OF PASTA GENTLY BOILING ON THE STOVE

and the kitchen filling with the scent of a garlicky red sauce, Lindsey Black is enjoying the moment. Daughter Molly, 9, is perched at the kitchen island, carefully placing sprinkles on the cupcakes she just frosted. Son Henry, 1, is in the high chair, smashing peas into his hair. Husband Josh will come through the door soon, and the family will sit down to a lasagna dinner. It's a snapshot of pure contentment—and it's exactly what Lindsey hoped her new kitchen would foster.

"The theme of our house is a mix of modern and vintage, new and old," Lindsey says. Working with architect Michael Walker and builder Ryan Anderson, the Blacks built their Early American-style farmhouse in an established Memphis neighborhood tucked under mature maples and oaks. The bridging of eras is evident in the large, open kitchen. Lindsey, an interior designer, merged classic design details like Shaker-style cabinets and milk glass pendant lights with smart, professional-grade appliances, then energized the room with an of-the-moment color: a deep, inky jade called Tarrytown Green by Benjamin Moore. "I love the color," Walker says. "It's current but not trendy. The dark color, especially in such a large room, anchors the space beautifully."

Perhaps surprisingly, Lindsay's first design decision was to use that color. "I'm big on thoughtful and impactful use of color,"

### *the plan*



Spacious enough to handle a crowd, the open-concept kitchen maintains a cozy farmhouse feel. A hardworking island adds prep space for everyday cooking, and barstool seating accommodates eat-in dining for the family of four. Tall casement windows flank the range to fill the space with natural light.



TOP: "The built-in coffeemaker was a splurge but one of the best investments we made," Lindsey says. "We drink coffee every day—and it's a beautiful conversation piece." Walnut appears in the pullout shelf underneath and the adjacent wine rack; Lindsey selected its rich earthy tone to complement the deep green of the cabinets. ABOVE: Lindsey opted for easy-care quartz-surfacing countertops to get the look of marble without the maintenance. "As someone who cooks and likes red wine, I didn't want to worry about babysitting the countertops," she says. A laminated edge makes the counters look thick and hefty, a subtle design touch meant to balance their size and length.



she says. It was an easier decision than you might think. “If you start with a neutral background, you have to bring personality into a space with other elements,” she says. “By starting with a standout color, everything else falls into place around it.” Brass knobs and drawer pulls, for instance, twinkle against the rich hue. Light oak floors and plenty of white in the island, the ceramic tile backsplash, and the marble-look countertops offer perfect counterbalance.

Furthering the serene atmosphere, clever storage keeps clutter where it belongs—out of sight. “I didn’t want to detract from the look with utility items,” Lindsey says. Electrical outlets tuck under cabinets, in pop-ups hidden in the counter, and behind flip-down panels on the sides of the island. Similarly, paper towels hide in a niche under the island top, and the microwave and toaster oven reside in the pantry. Everything’s close at hand but not in the way, in a space that blends eras and serves up countless moments of everyday happiness.

*Resources begin on page 108.*

## DESIGNER INSIGHTS: UPDATED VINTAGE

Designer Lindsey Black adapted the old-fashioned farmhouse look for her family’s large, open-plan contemporary home. Her secrets:

- *Evoke a timeless feel.* A mix of metal finishes—brass, stainless steel, wrought iron—gives the sense of a room that evolved over time. Lindsey also included classic design references, such as the glass-front china cupboard and schoolhouse-style lighting.
- *Complement with scale.* To suit her spacious room, Lindsey chose substantial materials—7-inch-wide planks for the oak floors and countertops made to look thicker with a laminated edge—that visually expand to fit the space. “Skinny, short floor planks would have felt dizzying,” Lindsey says.
- *Keep the intimate feeling.* The best way to imitate a farmhouse kitchen is to include an eat-in dining spot. After scrambling eggs, Lindsey can just turn to the island and serve them.

**ABOVE LEFT:** Bright blooms pop against the island’s white quartz-surfacing countertop. **ABOVE MIDDLE:** For anyone still traumatized by the shiny brass of the ‘80s, Lindsey offers her kitchen as proof that the metal can display more age and pedigree. “A hundred years ago, we would all have had brass elements in our houses,” she says. “It’s a classic metal that lends itself to the farmhouse style.” She chose cabinet hardware and faucets in modern silhouettes to keep the look updated. **ABOVE RIGHT:** Milk glass pendant lights have brass trim, which gives them an upmarket look.





THIS PHOTO: Lindsey was determined to hide clutter as much as possible. "It was so important to have the paper towels accessible but not out," she says. The trash compactor was another story. "My husband wanted it," she says with a laugh. "I thought it was so dated, but I gave in, and now I love it. We'd be taking out the trash every day if we didn't have it."