

Santa, elves
take over
Air Station

Page B-1



Reserve commander views 'Total Force'

Page A-4

Drunk driving can cause holiday tragedies

Page A-7

Close attention can prevent suicides

Pages A-8 & A-9

Hawaii Marine

Vol. 19, No. 50

Published at MCAS Kaneohe Bay. Also serving 1st MEB, Camp H.M. Smith and Marine Barracks, Hawaii.

December 20, 1990

Brigade charges into 90th year

JPAO

January 1 marks the 90th anniversary of the 1st Marine Expeditionary Brigade. Although deactivated, reactivated and renamed several times, the MEB has been there combat-ready and combat-tested to meet any crisis.

Formed Jan. 1, 1901 in the Philippines, Marines of the 1st MEB have seen extensive action and service throughout much of the world. Its battle colors have flown proudly in far away lands such as the Philippines, China, Cuba, Dominican Republic, Haiti, Iceland, Guam and Korea.

In 1901, the MEB was called the First Marine Brigade, it was comprised of two rifle regiments and two artillery companies. The MEB's first activation lasted only 14 years, but during those years, they managed to bring stability to the Philippine Islands following the Spanish-American War. The MEB also saw action in the Luzon Province in the Philippines and helped construct an advanced naval base at Subic Bay.

It was only a year before the MEB was reactivated. This time, they were called to restore order in the Carib-

bean Islands. The Brigade saw action in Haiti, the Dominican Republic and Cuba, and pioneered the close-air-support concept that dramatically placed the air-ground team in the forefront of tactical innovation during this campaign.

The Brigade stood well-trained and combat-ready waiting for the call and in 1944, the call came, this time, they were heading for Guam and the Philippines. By the end of the WWII, the Marines of the First Brigade had recaptured Guam and the Philippines, but forces were withdrawn for the Pacific. Once again, the Brigade retired its colors, but the retirement was short-lived.

Eight divisions of the Communist North Korean People's Army stormed across the 38th Parallel June 25, 1950. By taking that land, the North Koreans captured most of the South Korean Peninsula. In less than two weeks after the invasion, the 1st MEB, now renamed the 1st Provisional Marine Brigade, was reactivated. In five days, this 6,600-man brigade mounted out for Korea. The Marines of the Brigade initiated the first successful counterattacks and inflicted more than 10,000 casualties

on the North Koreans.

By Sept. 13, 1950, the Brigade had once again melded into the 1st Marine Division which later went on to make a successful Inchon landing and helped recapture the capital of Seoul.

Six months before the Korean War came to a stale-mated truce in July 1953, the Brigade was again re-designated. This time, they became the 1st Provisional Marine Air-Ground Task Force here at Kaneohe Bay. The task force was designed to be a "force in readiness" that could respond to any emergency in the Pacific Basin, but in 1956, it was redesignated as the 1st Marine Brigade.

In March 1965, the 1st Marine Brigade was steaming toward California in support of an exercise, but instead, the Marines were ordered to reinforce the 9th Marine Expeditionary Brigade already in the jungles of Vietnam.

Today, forces from the 1st MEB are once again on the front lines providing support in Saudi Arabia and training in the Philippines. In support of their mission, the Marines of 1st MEB stand ready to fight against all enemies.



LCpl. G. Pozner Smith

Pre-Christmas pageantry

Four shepherds wait for their cues from the audience during the Station Chapel Sunday School's Christmas pageant Sunday. Pictured left to right are: Colin Randall, Sam Atkins, Kenny Ciolek and Frederick Thomas.

Media targets families

In light of the events surrounding Operation Desert Shield, families of Marines and sailors have become desirable news sources. This is particularly the case during the holiday season. Many family members have already been approached by media.

While family members are free to speak to the media if they desire, they also have the right to turn down these requests.

In past months, Air Station family members have been exploited by the media as "news sources." They've been used as "targets" for

ongoing information requests and have had their privacy invaded.

If you wish to be interviewed by the media, the Joint Public Affairs Office recommends following certain guidelines to ensure you aren't misused. These tips include:

- Media members are not authorized aboard the Air Station without the Public Affairs Officer's approval and an escort.
- All interviews with the media should be coordinated through JPAO.
- Speak from personal ex-

perience only. Don't speak about military policies or views.

- Don't speak for "everyone."
- Keep privileged correspondence or conversation to yourself.
- Don't speculate. Steer clear of all "what if" questions.

To contact the JPAO, call 257-5728, 5742 or 1348 during normal working hours. After working hours, you can call the Station Officer of the Day at 257-1823, or the Brigade Officer of the Day at 257-1290.

K-Bay Marines set sail to Saudi



Cpl. Jason Erickson

A line of VMFA-212 F/A-18s are prepped and ready on line in the final moments before they were flown to the Middle East.

By LCpl. G. Pozner Smith

Three Kaneohe-based aircraft squadrons deployed for the Middle East Dec. 10.

Marine Fighter Attack Squadron-212 and 232, both F/A-18 Hornet jet fighter squadrons, left Kaneohe Bay by air in the early morning hours. The jets flew to Saudi Arabia and attached to 1 Marine Expeditionary Force. Other squadron personnel left Kaneohe Bay the next day.

Marine Medium Helicopter Squadron-265 flew out of

Kaneohe Bay Dec. 8 and landed on the USS Tripoli (LPH-10) near Pearl Harbor. HMM-265 attached to the 5th Marine Expeditionary Brigade, which left Pearl Harbor Dec. 10 aboard a 13-ship amphibious group bound for the Persian Gulf. It's the largest U.S. task force to set sail since the Korean conflict.

Most of the Marines and sailors seemed eager to deploy. "It's about time," said Cpl. Rich Centeno, HMM-265. "I'm looking forward to it."

Sgt. Maj. Thomas Elston, HMM-265 sergeant major, said his Marines and sailors are prepared, and that operating off ships will be a different experience.

"I told them not to be afraid, but to be concerned," Elston said.

Lt. Col. V.A. Simpson, VMFA-232 commander, told his Marines the same thing about two weeks ago. His "Red Devils" had just passed the 11-year milestone of active duty. See DEPLOY/A-3

Newspaper takes break

This is the last Hawaii Marine of this year. The newspaper will be on its annual two-week hiatus, and next publication date is Jan. 10. The deadline for submissions to that newspaper will be accepted until 4 p.m., Jan. 3, at the Joint Public Affairs Office.

Submissions for Familygrams, At A Glance, News in Brief and other columns will still be accepted throughout the Hawaii Marine's hiatus.

News In Brief

Health Care Council Concerns

Marines and their dependents who have health care issues they would like addressed need to submit their concerns in writing to the Health Care Consumer Council. Brigade Marines and dependents can deliver their concerns to the Petty Officer 1st Class Jones at the HQSVCCO, Brigade Aid Station, building 216 or mail them to: Brigade Surgeon, 1st MEB, MCAS Kaneohe Bay, HI 96863. Air Station Marines and dependents should address their concerns to the Branch Medical Clinic, MCAS Kaneohe Bay, HI 96863. All concerns must be received by Jan. 18.

New Red Cross Number

The Kaneohe Branch of the American Red Cross, building 456 now has a new phone number, 257-3150. The FAX number is 257-3006 and AUTOVON is 457-3150.

Free Holiday Transportation From K-Bay Clubs

In order to promote a holiday season, the Morale, Welfare and Recreation Department, in conjunction with Century Cab is sponsoring a "Drive Straight" program through Jan. 1. Under this program, impaired drivers may request

a free ride home from a club on Station. To use this service, patrons must notify the club manager and turn over their license and car keys, which will be returned to the patrons upon arrival home.

Hale Koa Christmas Show

The Hale Koa Hotel is sponsoring a free Christmas Magic Show for military family members Dec. 28-30 at 10:30 a.m. Doors will open at 10 a.m. for each performance. Pictures will be taken upon entry and will be available at the at no charge after the show. Refreshments will be served and clowns and jugglers will entertain before the program begins. Transportation from the Air Station and back will be provided. For ticket information, call Richard Montgomery at 257-5743.

Children's Christmas Party

A free children's Christmas party will be held at the Enlisted Club Saturday from 1-4 p.m. All Air Station children 12 years and younger will receive a gift from Santa. Entertainment includes the Nutcracker Suite, Sing-along caroling, Mr. Fun and the Shriners Clowns. Refreshments will be served. The party is sponsored by the Kooluapoko Lions Club, Navy League, MWR and the Enlisted Spouses' Center. For more information, call 257-5214 or 254-1851.

Exchange Sale

Due to the unexpected power outage last week, the Marine Corps Exchange is hosting a last minute shopping spree sale. Special hours will be in effect Friday-Sunday, 10 a.m.-9 p.m.

Christmas Dinner Menu

Christmas dinner at Pleas Hall is open to the Air Station Community and bonafide guests and will be served from 3-5 p.m. The cost is \$2.45 for adults and \$1.25 for children under 12. The surcharge is waived for military and dependents. Civilians and guests must pay the surcharge. The menu includes French onion soup, turkey, steamship round of beef, mashed potatoes and candied sweet potatoes and dessert. For more information, call 257-1311/1312.

Christmas Tree Recycling

Residents wishing to recycle their Christmas trees should place their trees in container bins located around the Station from Dec. 28 through Jan. 5. The trees will be converted into organic mulching material. The bins are located at: Rainbow Housing, parking island adjacent to Quarters 2527; Capehart Housing, Cushman Ave. across from Coleman Field; Capehart and FY64 Housing, parking lot at Harris Ave. and Harris Court; Ulupau Housing, along Middaugh Road, Fort Hase Beach; FY65 Housing, at the end of Cochran Street, adjacent to quarters 2462.

Family grams are for all deployed



Co. C. 1/3 Wives

Hello, Darling: Hope you're doing alright. The kids and I are fine. Hurry home. We miss you so much. Love, Geannie.

Rahib: Merry Christmas! I will be with you in spirit and love. I know you'll be with me. Love, Sweetpea.

Rahib: I love you. Hope you're okay. Your pumpkin pie is waiting with sweet surprises. Hope you like all. Sweetpea.

Mator T, HQCo. 3d Marines: Merry Christmas! Come home soon! We love you!



21st Dental Co. Families

Daddy: All we really want for Christmas is for you to be safe. We love you. Steph, Christopher and JT.

Capt. Hernandez: Merry Christmas. Mahalo Kila. Nothing been the same. Miss you like crazy. Need you. Take care. Love always, Groundhog.

Daddy: I love you. The Christmas card you sent is pretty. Thank you. Kisses and hugs. Love, Megan, Rose and Ferrnido.

Jer Bear: When you need me, just close your eyes and I'm with you. I love you. XX OO. Pauline.

My dearest Stephen: Hope that you have happy holidays. I am going to miss you. I love you. Leo.

Daddy: Wish you were here this year. I am going to miss you. Have a Merry Christmas. Love you, Carol.



Cristin Sierra James

JT: Hello and happy holidays. Sorry to hear that Santa can't make it to Saudi. Save your Christmas wishes. Hurry home. Leahna.

Sgt. Eddie Williams: Hello from the family. Miss you bunches. Have a Merry Christmas. We love you, Kimberly, Gregory, Tiffany and Brittany.

Dad: I need a haircut. Last time, mom cut too much off one side. Hurry home. Love, John J.D. Shaffer.

Smo: Merry Xmas and Happy New Year. Looking forward to the future, when we are always together. Love you! Kim.

Cpl. Donald Killian: We love and miss you bunches. Merry Christmas and be safe. Lots of love. Debbi and David.

SSgt. Fred Fernando: You are in your thoughts and wishes this Christmas season as in all others. Love always, Sharon.

1stSgt. Dalay: Sorry to hear the news. Our thoughts are with you. God Bless, Semper FI. Remember who loves ya!



Pam Voltarel and Pauline Porter

Cpl. Herndog: Nunca olvides que te amo. Cuidate siempre te estas esperando mi vida. Te amo y nunca te olvido. Tila.

LCpl. Marty Zalik: Are you eating your green vegetables? You are in our prayers. Chaplains Atkins and Kregelberg.

Cpl. Herndog: Missing and loving you always. Tu eres mi amor ten fe mi amore te amo! Tila.

Cpl. "Daddy" Rodell: We love you "bunches and bunches," "oodles and gobs," muchos and muchos. Love, Jaimie, Renee and Mommy.

Babyface: We are ready for the holidays. We have one more present we're waiting on, and that's you. Love, Shave-ice.

Fred Flintstone: Money! What money! Have spent it all own stock at McDonald's! Greetings to Bedrock! Stomp left, drag right!

Daddy: The girls and I miss you very much. God bless, take care and we'll pray you're home soon. Love, Holly, Vicky and Monica.

Donnie Mackey, BSSG-1: Your mom, Ron and Arthur want to wish you a Merry Christmas and come home safe. Pat Famiglietti.

HQ 1/12: Hoping to see all of you soon. Stay safe and try to have a Merry Christmas. Debbi.



Jason and Nicole Lichtenhan



Micah and Laurie Bush

Cpl. Cotten: Thanks for the offer to "talk me through it" via GTE. In person rates best. 143 always, Barbara.

My Baby: Our love will see us through. We miss you tender touch. You are so special. Micah and Mommy.

Tracy: Wish you could be here to watch your son grow bigger every day. Merry Christmas! Love you! Ron.

Mummy: I hope you liked our picture last week. Good one on the way. Merry Christmas. Love you bunches! Christopher.

The 1 MEB G-1, Pers. Adf., HAQ and Postal wish a warm aloha to Mr. Milner and other Hawaii compatriots.

Cpl. Rodell: Even though we are thousands of miles apart, you're still close as you're in my heart. Love, Sherri.

Gunny Jim Roddy: Thanks for the Kor. It made some great Christmas presents. Your chaplains.

Dear Bill: Wishing you a Merry Christmas. Wish we could be together to celebrate. Miss and love you.

Sgt. Eddie Williams: Holding you close to my heart. Merry Christmas, my love. Miss you everyday. I love you. Tricia.

Nahba: I'm counting the days until we can be together. Miss you a lot. Hugs and kisses. Love, Jenn.

Cpl. Stephen Rodell: You're always on my mind. I'm waiting here with open arms for you. Faithfully, Sherrie and Jamie.

Light of My Life: You and I and Jesus, we'll make it. You wait, you watch, you'll see. Love Barb.

SSgt. Phillip Brown: Merry Christmas and Happy Anniversary. I'm on my way to see the heads. We love you, Carolyn.

To Robert Maldonado: Merry Christmas from all of your family and friends. Mom, Dad, Poncho, Andy, Marie, David, Ronnie, Grandmas.

To David Trevino: Merry Christmas from all of your family and friends. Texas, Michigan, California and Hawaii. Mom, Josie, Lupe and Poncho.

LCpl. Lenhoff: Thanks for all the tapes and phone calls. Love hearing your voice. Miss and love you. Jenny.

Hollolo: Cherry nose, cap on head suit that's red, special night, beard that's white. Must be Santa. Miss you Dad. Jillan.

Capt. Durkin: Word has it you've been nicely naughty this year. Eww, baby. Merry Christmas. I love you, TLL.

Daddy Pena: Just worry about you. Mommy and I are fine. We love you. Come home safe and soon.

Fairweather Friend: Hello and Happy Holidays. Miss you lots. Your kid is on vacation. Say hi to the 1/12 boys.

Miss Jackson: If you happen to read this, please respond. Sent letter to you, but no response. Thinking of you. Leahna.

Sgt. Meyer: We miss you so very much. Can't wait to see ya again. Hugs and kisses. Love, Debby, TJ and Stacy.

1stSgt. Dalay: Sorry to hear the news. Our thoughts are with you. God Bless, Semper FI. Remember who loves ya!



Geannie Turner

Daddy Jayhead: Loved the bedtime stories. Next time, make it three little camels. Love you so big. Kris, Katie and Kassie.

Hi Mark: We all miss you. Hope you are tanned. Santa is coming. Wish he would send you home. Love, Mom.

You're the hero in my life, you're there through good and bad. You're the one and only, you're my super-dad. Love Chick-Pea.

Capt. Hernandez: Daddy, I'm sorry. Being brat. Don't spank. Come home. Mommy going crazy on me. Love you, Coconut Head.

Capt. Lang: 30 Marines hope all is well and wishing you happy holidays. Find any gerbils yet, Semper FI Kop.

SSgt. Mark Allen: Honey, I love and need you. Come home safe. You have a lot of chores at home. Claire.

Autumn: Dad loves his big girl. I love and miss you big bunches. Hope to see you soon Dad.

Kathy: I'm yours, and you're mine. I'll love you for life. Be mine forever and a day. Love, Todd.

Bernie Buzo: My heart is empty and thoughts are blue, but when I get motivated it's because of you. Love, Kila.

Bernie, Kila, Brah, Alex, Adrian and Jaimie: I love you all very much. May the Lord

bless your holidays. Kila.

My Darling Bernie and precious Kila, Brah, Alex, Adrian and Jaimie. I love you all very much. Love, The Doose.

Baby Jean: You are doing a great job, keep it up. I love and miss you, big time. Michael.

TLL: I don't know much, but I know I love you. I miss you, too. God bless. KO PKD.

Mike: Keep up the good work at school. Happy faces forever! Major (Select) Dad.

Marine Medium Helicopter Squadron 202

To our families and fellow Marines of the 1st MEB

Mele Kalikimaka and a Hououli Makahiki Hou

Hawaii Marine

The Hawaii Marine is an unofficial newspaper published every Thursday by RFD Publications, Inc., 45-525 Lialoia Road, Kaneohe, HI 96744, a private firm not connected with the Department of the Navy or the United States Marine Corps. All advertising is provided by RFD Publications, Inc., by calling 235-5881 or by visiting their office. Circulation is 4,000.

The Hawaii Marine is a free publication delivered each week to all family housing units aboard Marine Corps Air Station, Kaneohe Bay and to all Hawaii-based Marine Corps commands. Housing carriers are paid only by voluntary contributions from customers who are satisfied with the youngsters delivery service. A voluntary contribution of \$1.30 a month may be solicited by these carriers. Housing residents may contact the publisher directly if they wish to stop home delivery. Questions concerning circulation policies and service can be answered by calling the publisher.

The Hawaii Marine welcomes stories and photo submissions from its readers, and can respond to timely requests for specialized coverage. Please call the MCAF/1st MEB Joint Public Affairs Office at 257-5745 for Windward activities or the First Marine Force, Pacific, Public Affairs Office at 477-5052 for Leeward activities. Opinions expressed by the publisher and journalists are their own, and are not to be considered

Messages from deployed Marines

Autumn: Dad loves his big girl. I love and miss you big bunches. Hope to see you soon Dad.

Kathy: I'm yours, and you're mine. I'll love you for life. Be mine forever and a day. Love, Todd.

Bernie Buzo: My heart is empty and thoughts are blue, but when I get motivated it's because of you. Love, Kila.

Bernie, Kila, Brah, Alex, Adrian and Jaimie: I love you all very much. May the Lord bless your holidays. Kila.

My Darling Bernie and precious Kila, Brah, Alex, Adrian and Jaimie. I love you all very much. Love, The Doose.

Baby Jean: You are doing a great job, keep it up. I love and miss you, big time. Michael.

TLL: I don't know much, but I know I love you. I miss you, too. God bless. KO PKD.

Mike: Keep up the good work at school. Happy faces forever! Major (Select) Dad.

An official expression of the Department of the Navy or the United States Marine Corps.

Items advertised in the Hawaii Marine must be made available for purchase, use, or patronage to everyone without regard to race, creed, color, national origin, religion, age or sex of purchaser, user or patron. The appearance of all advertisements in the Hawaii Marine, in include inserts and/or flyers, does not constitute endorsement of the firms, products or services by the Department of the Defense, the Department of the Navy or the United States Marine Corps.

Commanding Officer: Col. R.R. Crisler
Public Affairs Officer: Capt. L.M. Ryan
Editor: Capt. J. Kaplan Ewart

Squadrons deploy to Saudi

DEPLOY/from A-1
 cident-free flying, accumulating more than 37,000 flight hours.

"This record shows great attention to detail on everybody's part," Simpson said. "I'm proud to be a part of this squadron, and I'm proud to be shipping out with you."

Col. T.M. Curtis, MAG-24 commanding officer, said he talked with deploying squadron commanders and Marines before they left. "I told them they should be pleased to be deploying in a real-world situation. Many Marines have never had this chance.

My heart goes out with them."

Curtis assumed command of the MAG Aug. 3 the day after Iraq invaded Kuwait. He soon began saying goodbye to his Marines as they departed for the Middle East. Since then, Curtis has received word that Kaneohe personnel have done an outstanding job there.

Curtis added that family members of his deployed Marines and sailors are a great concern of his. He addressed this concern at the group's ombudsmen meeting

last week. "I told them I'm concerned with the welfare of our families," Curtis said. "I've found that sometimes I don't find out about a problem because they think I'm too busy. Well, I am busy, but families are what I want to be busy with. Using my assets, such as the chaplain and sergeant major, I want to take care of their problems."

Curtis urged spouses to realize there is a tremendous support network available here, and praised them in their outstanding support of their Marines and sailors.



An HMM-265 helicopter conducts routine training prior to deployment.

Dunn & Dunn
 Attorneys at Law
 A Team Corporation
 • Low Uncontested Divorces
 • Low Uncontested Adoptions
 • Bankruptcy
 • Car Accidents & Deaths

**SAME DAY SERVICE/RUSH AVAILABLE
 OPEN EVENINGS & SATURDAYS**

507 South King St., Suite 178 Ph. 921-4529

Greg T. Dunn
 Former Military
 JAG Attorney

RESUMES and SF171's

- Military Specialist — so you don't have to keep explaining all your terminology.
- Award Winning Writer — to put you in the best possible light.
- Laser Set Availability — to set you out in a crowd.
- MasterCard & Visa Accepted

COMPLETE BUSINESS SERVICES
 455-1177

Pearl City

JOY CHRISTIAN CENTER
 FULLNESS OF LIFE

BIBLE STUDY ON BASE (KMCAS)
 2032B Brown Drive
 Every Wednesday at 7:15 p.m.
SUNDAY SERVICES
 9:30 a.m. & 6:30 p.m.
 (Child Care & Sunday School Provided)

Call For More Information
 235-7777
 KANEOHE
 46-174 Kahulupa Street

LOSE YOUR FAT EASIER!
 LOSE 4-14 PERMANENT INCHES IN 1 HOUR!
 EUROPE'S #1 CELLULITE BODY TREATMENT
 WHAT A BALANCED DIET & EXERCISE IS UNABLE TO DO:
 Beneficials Contouring HERBAL BODY WRAPS will:
 Reshape Problem Areas • Eliminate Toxic Waste & Cellulite • Restore Circulation & Elasticity
 • GREAT FOR POST PREGNANCY & STRESS RELIEF
THIS IS NOT A WATER LOSS!

23% OFF 3 WRAP SERIES
 W/A FREE FACIAL (\$25 Value)
 Present this ad. Limited appointments available. Book today. Expires 1/28/91

235-4400 • KANEOHE
LIFE STYLES BEAUTY HEALTH CENTER
 45-955 Kam Hwy., #306,
 American Savings Bank Bldg.

FREE VIDEO DEMONSTRATION

Season's Greetings.
 Best wishes for a safe and happy holiday season.

Century 21 WINDWARD
 58 Oneawa St
 Kailua, Hawaii 96734

Put Number 1 to work for you.
 263-3322

©1987 Century 21 Real Estate Corporation. An Equal Opportunity Employer. All trademarks & service marks of Century 21 Real Estate Corporation. Equal Housing Opportunity. Each office is independently owned and operated.

STOP! READ! SAVE!

14K Black Enamel Ring Guards \$2695

14K Diamond Cut Rope Chains

1.5mm	2.0mm	2.5mm	3.0mm
7" \$24	\$34	\$50	\$75
16" \$53	\$73	\$115	\$159
18" \$62	\$80	\$129	\$175
20" \$70	\$89	\$149	\$195

Warrior's Helmet Small \$75 Medium \$175 Large \$365

Enamel Initial Ring \$45
\$79 Raised Initial Ring

French Mount CZ Ring Men's Nugget Ring FROM \$119

3 For 1 14K HAWAIIAN JEWELRY*
 Bracelet • Ring • Pendant
 6mm set only \$399
 8mm set only \$499
 10mm set only \$599

14K Palaoa \$149

DIAMOND SALE Loose Stones

.19 \$199	.21 \$216	.23 \$249	.24 \$345	.33 \$468
		.36 \$599	.37 \$744	
		.38 \$768		
		.60 \$960		

*Prices for all Hawaiian Bracelets & Rings apply to sizes up to 7 1/2.

PRESTIGE Gold & Diamonds
 200 Hamakua Drive (next to Safeway) Kailua. 262-0008
 Open Tuesday-Sunday 11:00 am - 6:00 pm

What Can Make ACUVUE® Disposable Contact Lenses Even Better?

A Free Trial Pair!
 We want to open your eyes to something new in contact lenses... convenience and comfort!

Convenience because ACUVUE® Disposable Contact Lenses never have to be cleaned. You simply wear them and throw them away.

Comfort because nothing's as comfortable as a fresh, clean contact lens.

Come in for an eye exam. If ACUVUE is right for you, you'll experience convenience and comfort with your free trial pair.

CALL NOW FOR A FREE PAIR OF ACUVUE® LENSES

DR. CHARLES DEAN
 OPTOMETRIST
 139 Hekili Street
 Kailua

261-9735

Johnson & Johnson

ACUVUE® The First Disposable Contact Lens

**The Hale Koa Luau...
 Feel the Spirit of Aloha come alive!**

Take a trip back to Old Hawaii. Enjoy a fun-filled night of Hawaiian feasting and Polynesian entertainment. At the Hale Koa. It's Oahu's most authentic luau. Served up Island-style on our oceanfront lawn.

The experience begins at sundown. With cool tropical drinks and romantic Hawaiian entertainment. An authentic torch-lighting ceremony. And a classic luau feast of delicious Hawaiian favorites. Then watch the South Pacific come alive. Thundering Tahitian drums. Entrancing hula. And the spectacular fire knife dancer.

Just \$22.95 for adults includes dinner, show, two standard or one exotic drink and gratuity. Children under 12, \$12.95. Every Thursday evening, September through May. Mondays and Thursdays June through August.

Purchase tickets up to four weeks in advance at our Activities Desk or any Military Ticket Outlet.

Feels like paradise!
HALE KOA HOTEL
 Armed Forces Recreation Center
 On Waikiki Beach at Ft. DeRussy • 2055 Kalia Road
 955-0555

General views 'Total Force'



Story and photo by Cpl. Reginald Cole

BGen. John Coyne, commanding general, 4th Force Service Support Group, visited the Marines of Combat Service Support Detachment-40 (CSSD-40) here Dec. 12.

The purpose of his visit was to recognize the efforts of these Marines and to view the Total Force Concept, a mobilization concept which hasn't been used in more than 40 years.

BGen. Coyne visited all the work areas of Brigade Service Support Detachment to include 12th Marines' Gun Park, Motor Transport Maintenance Shop, Engineer Maintenance Repair Shop, Metal Shop and others.

"I've been in the reserves for a long time and I know that the Total Force Concept would work," said BGen. Coyne. "The mobilization of these Marines proved reserve Marines can augment into the active duty role smoothly. The Middle East crisis just gave me a chance to see it (Total Force Concept) in operation."

The CSSD-40 Marines, who have been here since Oct. 12, were added to BSSD. The Marines are tasked with maintaining more than 3,300 pieces of tactical equipment that was left behind when units deployed to the Middle East.

Since their arrival in August, CSSD Marines have

repaired more than 2100 pieces of equipment. This includes such items as tactical radios, small arms, trucks and generators.

The CSSD-40 Marines represent a combination of 20 different reserve units from 16 states and make-up 45 percent of BSSD.

BGen. Coyne stressed there should be no distinction between reservist and active duty Marines. He added that reserve Marines are school-trained in their MOS and that their civilian jobs are usually comparable to their military duties.

"When we first arrived in the metal shop, it was more like an open-arm greeting, not the big stare-down," said

SSgt. Kim Davis, a reservist from Texas. "It's been a team effort all the way," she said.

While touring the Engineer Maintenance Shop, BGen. Coyne promoted six Marines on the spot.

Toward the end of his visit, BGen. Coyne addressed all of the Marines.

"In a way, Saddam Hussein gave us an opportunity to prove that the Total Force Concept works," said Coyne.

The reservists, who were originally scheduled to deactivate Jan. 9, have now been extended to April, according to 1stSgt. B.M. Bentle, Remain Behind Equipment (RBE).

Serving • Kailua • Kaneohe • Waimanalo

Make an Educated Decision When You have Low Back Pain

- Summa Cum Laude Graduate, Life Chiropractic College
- Certified for Rating of Spinal Impairment & Disability by Los Angeles Chiropractic College
- Member of the Hawaii State Chiropractic Association
- Graduate of University of Hawaii / Honors
- Member of the Kailua Exchange Club



Dr. Jamie G. Phillips



Dr. Rex A. Weigel

- Member of International Chiropractic Association
- Member of Hawaii State Chiropractic Association
- Member of Hawaii Chamber of Commerce
- USMC (Retired)
- Member of Board of Directors of Adult Friends for Youth



- In-Office X-Ray Facilities
- Physiotherapy Dept.
- Personalized Exercise Programs
- In-Office Massage Therapy



- Auto and Work Injury
- Spinal Rehabilitative Care
- Spinal Maintenance Care
- Educational Videos



- Low Force Adjusting Technique
- Children's Technique
- All Natural Method of Health Care
- No Cater to Cowards



- Caring and Experienced Staff
- Convenient Morning, Evening and Saturday Hours
- Free Initial Consultation
- We File Your Insurance Claims

Enchanted Lake Chiropractic

1090 Keolu Drive • Kailua, Hawaii 96734

Call Now For An Appointment



262-5555

GIVE THE GIFT OF MUSIC & DANCE!

Gift Certificates Available:

Piano Lady
School of Music and Dance

This certificate entitles _____ to _____

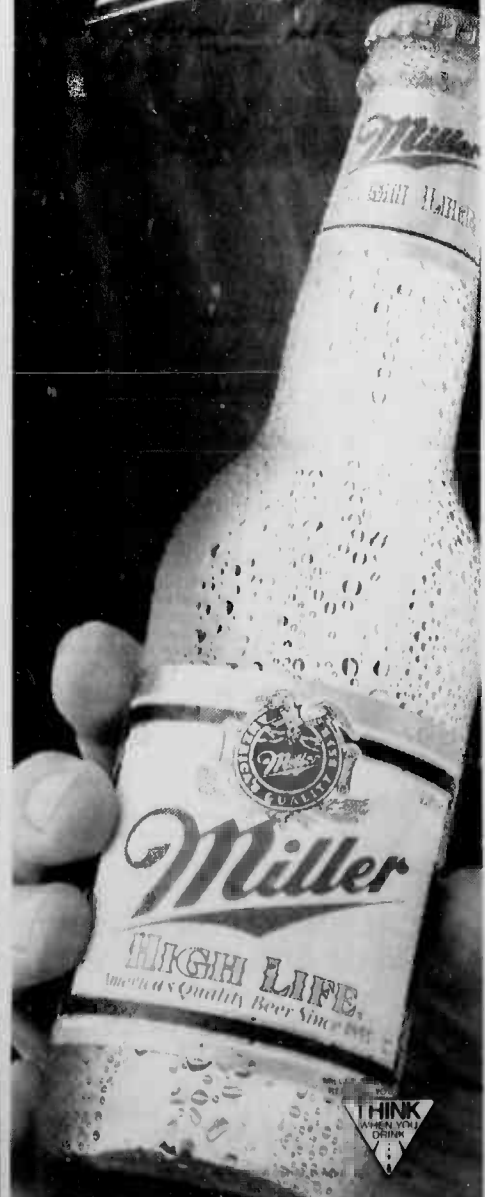
_____ tickets valued at \$ _____ with the Piano Lady.

Date _____

Call 471-0392 (ask for Rose or Barbara)
DAC Moanalua Community Cntr.

BUY THAT MAN A

Miller



Miller

HIGH LIFE

America's Quality Beer Since 1855



55%

OFF ALL OUR

DIAMONDS & GOLD

NOW THRU DECEMBER 24TH

CHRISTMAS ON YOUR TERMS!

NO FINANCE CHARGE FOR 10 MONTHS WITH 20% DOWN ON APPROVED CREDIT.

SECURITY DIAMOND



CONRAD JEWELERS

ALA MOANA CENTER ♦ PEARLRIDGE PHASE II ♦ (808) 949-6432

LAY AWAY - REVOLVING CHARGE - ALL MAJOR CREDIT CARDS - EXTENDED PAYMENT PLAN - SPECIAL ORDERS NOT INCLUDE



The *AT&T Military Calling Card* makes sharing the experience easy. It connects you to more places worldwide than any other long distance calling card.



- Call from most phones, anywhere. The *AT&T Military Calling Card* is the least expensive way to call next to direct dialing on the *AT&T Long Distance Network*.

hours a day and the most reliable long distance service you can get—with the *AT&T Military Calling Card*.

To order your FREE *AT&T Military Calling Card* call:

1 800 551-3131 Ext. 1093



- You don't need your own phone. It's easy to get the *AT&T Military Calling Card*.



Get a free 30 minute *AT&T Long Distance* call each month with the *AT&T Military Calling Card Reward Program*.

*We'll automatically send you a \$5 *AT&T Long Distance Gift Certificate*, good for a 30 minute *AT&T Long Distance* call, (based on domestic customer dialed *Calling Card* calls made during the *AT&T Night/Weekend* calling period,) when you make at least \$30 worth of domestic *AT&T Military Calling Card* calls per bill (*AT&T Long Distance* calls made within the continental United States, plus Hawaii and Alaska and excluding the U.S. Virgin Islands and Puerto Rico). You may receive more or less calling time, depending on where and when you call. Offer is valid December 1, 1990 through February 1, 1991.

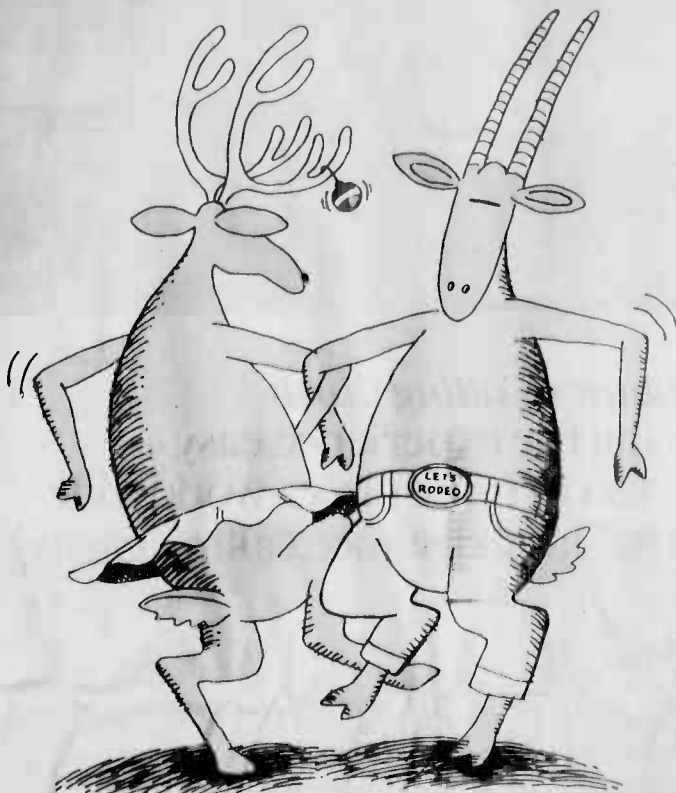
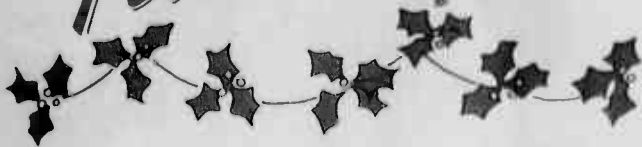
And once you have it, you don't have to reapply every time you move.



- It's free. So order today. Enjoy quick, clear connections, dependable operators 24

AT&T
The right choice.

Pearlridge



**Save Where The
Reindeer and
Antelope Play.**

Once again it's time to grab your shopping partners and swing into Pearlridge for our big last-minute Christmas Sale and Country Christmas celebration.

**Saturday, December 22
Open Til Midnight Christmas Sale**

Our annual Center-Wide Christmas Sale. 170 stores with bargains galore for last minute Santas.

KDEO Country Christmas Show
7 to 9PM, Phase I, Center Stage

KDEO Radio and Pearlridge team up to bring you our best Country Christmas yet. A Pearlridge tradition.

Featuring: Mason-Dixon Line
The KDEO Country Dancers of Hawaii
Master of Ceremonies Charlie Garrett

\$500 Free Shopping Spree at Pearlridge
\$500 FREE

It could be yours. We'll give away wonderful Christmas prizes and surprises and a \$500 shopping spree. You must be 18 or older to enter and you must be present to win.

Mele Kalkimaka, y'all!

**Pearlridge Celebrates
A Country Christmas**

170 Stores/Entertainment/16 Theatres/2 Food Courts
Special Holiday Hours: Through Dec. 21, 9AM to 10PM
Dec. 22, 9AM to Midnight/Dec. 23, 9AM to 10PM/Dec. 24, 9AM to 5PM

CHRISTMAS



Jay Jacobs
stores of fashion

**40%-60%
OFF**

during our semi-annual sale.
Better hotfoot it.

Whew! From Nov. 29th to Jan. 1st, Kinney's taking 40%-60% off a wide selection of the right shoes for the whole family. Casual, dressy, athletic shoes, even boots. Better hurry though. They're going like hotcakes.

Kinney
We only
sell the
right shoe.

- Pearlridge (Phase I) 484-8982
- Pearlridge (Phase II) 486-0906
- Millard Shopping Center 623-8404
- Windward Mall 247-6998
- Wahiawa (45 N. Kam Hwy.) 622-2323
- Whittier Mall Shopping Ctr. 696-3077

xmas specials

dec. 21-24, 1990

30% off (sorry no holds)

- xmas t-shirts & sweats
- xmas stocking stuffers
- xmas gift wrap & cards
- xmas hair bows
- xmas party goods
- xmas ornaments
- xmas socks



pearlridge center is open til midnight on dec. 22.



Legally Speaking

By Maj. J.B. Ouligay
Legal Services Center

The upcoming holiday season will bring good times, good cheer and good memories for most Marines, sailors and their families. But for some, this holiday season will be a nightmare that will provide bad memories for a lifetime.

Statistics show alcohol-related deaths and injuries dramatically increase during holiday seasons. So will drunk driving arrests.

With the arousal of the public's conscience by such groups as MADD and SADD, drunk driving has become a serious crime. It has corre-

spondingly become very serious for members of the Marine Corps.

The arrest experience typically happens like this: Police stop the driver. There is some indication of drunkenness, such as slurred speech, uncoordinated movements, red eyes or erratic driving.

Some type of sobriety test is then administered. If you fail the test, your wife, children or buddies watch as you are handcuffed and put in a squad car. From here on in you are treated as any other arrested criminal. You will not get sympathy because it's "only" drunken driving. After reaching the police

Christmas in jail

station, your blood alcohol concentration (BAC) will be measured by a breath or blood test. If your BAC registers .10 percent or higher, you will be charged with drunk driving.

If you are arrested by the state, you must post cash bail or remain in jail for up to 48 hours. If you are apprehended on a military installation, you will remain under apprehension until a respon-

sible individual can pick you up.

Once out of jail, your problems will just be beginning. In the state of Hawaii, you will be required to appear in one of the state district courts. If apprehended on a military installation, you will be required to appear at office hours or in Federal Magistrate's Court. You may also receive office hours for an off-station DUI.

For first-time offenders, the minimum you will receive is a 90-day suspension of driver's license, 14 hours of alcohol rehabilitation and a \$150 fine.

For more aggravated or second-time offenders, jail time, community service and higher fines are likely. Going to court may require you to hire a lawyer, which is also expensive.

Now, you've been arrested, convicted and punished. What else can happen? Your insurance rates will skyrocket. You may have to pay more than \$15,000 in the next five years for car insurance. The worst effect will proba-

bly be on your Marine career. For officers and staff NCOs, a DUI conviction will most likely be a career-ending event unless your current rank is where you plan to stay. You will in all likelihood be given an opportunity to discuss the DUI with the commanding general.

You will receive negative entries in your service records and adverse markings on fitness reports. You will also be sent to the Counseling and Assistance Center for an alcohol evaluation.

In short, receiving a DUI is a nasty, expensive experience.

Ho...Ho...Ho... Holiday Sale

VIKING VIKING VIKING VIKING VIKING VIKING VIKING VIKING VIKING VIKING VIKING VIKING VIKING VIKING

VIKING Prices go MAINLAND

VIKING SEWING CENTERS ARE REDUCING PRICES TO MAINLAND PRICES & BELOW

FREE UNLIMITED MACHINE INSTRUCTION

VIKING ELNA WHITE SEWING MACHINES SERGERS OVERLOCKS Prices Start At **\$157**

LARGEST SELECTION IN HAWAII

Viking Elna White Sewing Center
670 Auchi St. • 521-7966 • PEARLRIDGE 487-6553

Prices Good Thru 12/24/90
EZ PAYMENT PLAN

VIKING VIKING VIKING VIKING VIKING VIKING VIKING VIKING VIKING VIKING VIKING VIKING VIKING

Pearlridge

**Celebrates
A Country Christmas**

15%-20% OFF

SELECTED FOOTWEAR & APPAREL

Christmas '90

Lady Foot Locker

ALA MOANA 947-3589
PEARLRIDGE 488-8355

Made In U.S.A.

DISCOVER The Beauty & Health Benefits of

STRESS BRACELETS
Patents Pending

ONLY \$29⁹⁵ EACH (reg. \$34.95)

GOLD BANGLES

ONLY \$11⁹⁵ EACH

•Chronic Stress •Insomnia •Arthritis
•Hypertension •Rheumatism •Muscular Fatigue

TRENDSETTERS BEAUTY STORE
488-9721 (Pearlridge Shopping Center)

Dress for the occasions

LEEDS
SHIRT STORES

Elena's

**"Home of
Finest
Filipino
Foods"**

488-2559

Pearlridge Center Phase II
Aiea, HI

Hours:
Mon-Thurs: 9 a.m.-9 p.m.
Fri. & Sat.: 9 a.m.-10 p.m.
Sun.: 9 a.m.-6 p.m.

Attention, care can curb suicide tragedies

By Sgt. Gloria Nacoste
 Suicides are on the increase and officials are concerned. Corps-wide, from Jan. 1, 1980 to present, 35 Marines have taken their lives. That figure compared to 25 suicides in 1989, is higher than the annual average for the past decade. In the Marine Corps, suicide now ranks second only to private motor vehicle accidents as the leading cause of death.

"Although we haven't had any confirmed suicides since November 1989, 51 suicidal related incidents have been reported to authorities here," said GySgt. Wayne W. Browning, operations chief, Criminal Investigation Division at the Provost Marshal's Office. He said that figure includes military and family members with suicidal thoughts, usually expressed indirectly in conversation

(ideation), gestures and actual attempts.

According to Air Station Order 1720.1, a suicide attempt is an act of violence toward oneself with the intent to die. The order defines suicidal gesture as an act that is symbolic of suicide but constitutes no serious threat to life. It is an act of such low lethality that it is obvious that no serious threat to die exists. "Small self-made marks or cuts on the wrists, or taking a couple of pills above the normal dosage are gestures that suggest the individual is crying for help," Browning said. "In those cases, the individual does just enough to get someone to notice that he needs help."

Suicidal threats including or doing something that indicates a self-destructive desire, such as driving reck-

lessly, pointing a weapon at oneself or saying "I'm going to blow myself away."

In Air Station Order 1720.1 when a servicemember or family member threatens suicide, makes suicidal gestures, or expresses suicidal thoughts on Station, one should detain the individual and call military police if help is needed. During working hours, the individual servicemember should be escorted by anyone available to the unit medical officer. During non-working hours, escort the individual to the Branch Medical Clinic.

All non-active duty family members should be escorted directly to the Branch Medical Clinic.

Officials at the Family Service Center, Family Advocacy, CID and the Station Chap-

lain's Office here said it's essential to monitor the process and ensure the individual's safety at all times.

"We have a chaplain on duty 24 hours a day," said Navy Chaplain (Lt.) Anne M. Kregelberg, family services chaplain for the Air Station. "We do follow-up visits to individuals and their families to help them cope with life and death situations confronting them."

Kregelberg said a lot of people don't ask for help because they feel helpless or untrained to deal with a crisis.

"I urge people to go to the aid of someone in distress," said Kregelberg. "Listen to what he's saying to you. Don't brush off what he says."

According to a November message from Headquarters Marine Corps to all Marines, a recent military review of suicide cases indicates that the most common causes of

Marine suicides appear to be personal problems rather than job-related. Officials said problems within a relationship, such as divorce, separation, "breaking up," and financial difficulties are most significant.

Although suicide can happen to anyone from young children to the elderly of any racial, ethnic, social or economic background, the military review states that Marines age 17 to 24 years are most at risk.

Other findings stressed that Marine suicides occur most often in the first 12 months at a new duty station or during first deployment; most suicides occur at home or in the barracks; methods most often used are gunshot or hanging; alcohol consumption is often involved; advance warnings of suicidal intentions are normally given by the Marine; and personality disorders or emotional disturbances have

already surfaced.

In addition to the causes and tendencies identified in the suicide case review, numerous warning signs included: verbal statements of a wish to die or direct threats of self harm; an unusual interest in or talk about the subject of death, as reflected in letters, speech or art work; declining attention to personal appearance; changes in sleep patterns and/or appetite; disposition of personal affairs, such as making funeral arrangements and giving away possessions; being accident prone, in an otherwise normal individual; the recent loss of a friend or loved one, followed by signs of depression. Fellow Marines, supervisors, and co-workers must be alert to crying spells and respond appropriately.

Patricia J. Sullivan, clinical social worker and Family Advocacy Representative, See SUICIDE/A-9

THE FUTON STORE
 NOW 3 LOCATIONS!
 Specials through Dec. 24

"MAUI": Hardwood Curved Arm Bifold Full Frame: \$369 Compare at \$459 Queen Frame: \$399 Compare at \$489

"KAILUA": 4 Position Lounger w/Edge Moulding Twin Frame: \$99 Compare at \$140 Full Frame: \$109 Compare at \$160 Queen Frame: \$119 Compare at \$180

and much, much more!
 3 MONTHS NO INTEREST FINANCING AVAILABLE

HONOLULU 735 Sheridan St., Bldg. B PH: 955-3478
 KAILUA 320 Uluhi St. PH: 262-9312
 AIEA Behind Cullen Ford 9825 Hukua Hgwy. B #15 PH: 488-7658

HOURS MON-SAT 11-4 SUN: 12 noon-4

Joyous Holiday

Christmas at the Sheraton
 The Pikake Terrace
 Christmas Brunch
 10 a.m.-2 p.m.
 \$14.95 Adults
 \$8.95 Children
 (Between Ages 7-12)

Christmas Dinner Buffet
 5 p.m.-10 p.m.
 \$18.95 Adults
 \$8.95 Children
 (Between Ages 7-12)

For reservations call 922-5811

NEW YEAR'S EVE AT THE SHERATON AINAHAU SHOWROOM
 New Year's Eve, December 31st Party Favors and Glass of Champagne
 Feast on a Superb Gourmet Dinner Steak and Lobster

- Enjoy "Las Vegas In Hawaii." A spectacular revue combining the best of Las Vegas, Polynesian and Broadway. Dazzling Las Vegas showgirls, costumes, glitter and lights
- Journey through the South Pacific with Tahiti's Polynesian Revue Fire and Fury. Seductive Maidens. The South Pacific explodes in a blaze of color, dance and songs.
- Be spellbound and captivated by the magic and illusions of Ben "Kai" Taunoda. Magic with a Las Vegas flair.

\$99 per person
 Sunday, Dec. 30th through Wednesday, January 2nd
 1 Dinner Show Nightly
 Except December 31st,
 2 Shows

For Reservations call 922-5811

Sheraton Princess Kalulani HOTEL WAIKIKI
 IIT Sheraton
 WORLDWIDE HOTELS, INNS, RESORTS & AIRLINES

A BRILLIANT PROPOSAL

PROMISE RINGS from \$89
 DUO WEDDING SETS from \$350
 TRIO WEDDING SETS from \$530

She's wonderful, unique, special. She's a woman who deserves nothing less than a diamond.. The House of Adler salutes our military in Hawaii.

Come in today and we'll help you select just the right diamond to fit your budget at the most affordable terms possible.

MILITARY ALLOWMENTS AVAILABLE
 Easy in-house financing

House of Adler
 THIRD GENERATION DIAMOND CUTTERS All Major Credit Cards Accepted

SUPPLIER TO THE MILITARY SINCE 1940

If you are not buying your diamonds from the House of Adler, you are paying too much!

PAN AM BLDG. 12th floor • Validated Parking • 949-4196
 EARLRIDGE PHASE II 487-0808 • WAIPAHU TOWN CENTER 671-8227

1 HOUR PHOTO LAB at MARINE CORP EXCHANGE

Kodak Colorwatch system

NEW DATES GRAND OPENING SPECIAL!!!

Have one roll developed — get the 2nd roll developed FREE!!!
 FULL FRAME 4X6 PRINTS!

(FROM 35MM FILM) ANY EXPOSURE LENGTH!

GOOD FOR ONE HOUR SERVICE ONLY — NO ROLL LIMIT
 Offer good December 21 through December 23 only

Marine Corps Exchange
 A Division of Morale, Welfare & Recreation

KOOLAU PETS HAPPY HOLIDAYS

COME VISIT OUR NEW LOCATION ON THE LOWER LEVEL NEXT TO J.C. PENNEY'S

CHINCHILLAS
 Soft & Lovable Easy To Care For
LARGE ASSORTMENT
 We Carry A Complete Line Of Chinchilla Accessories & Supplies.

ODELL 5 GAL. DESK TOP HEXAGON AQUARIUM
 Includes strip incandescent light, hinged glass top, solid pine desk top stand, air pump and underground filter.

\$59.95
 Reg. \$89.95

Sale Ends 12/24/90.

HAGEN Doggie Treats Assorted Beef Chews **25% OFF**

WINDWARD MALL 235-6477

SUICIDE/from A-8 said the individual is evaluated by a psychiatrist at the Medical Clinic who assesses the level of risk, and has the person hospitalized for further evaluation, or referred to an individual or agency that does long-term counseling.

Sullivan pointed out that in a lot of cases, suicide attempts are done by individuals who are normally categorized as loners or those who, for whatever reasons, feel they can't talk to anyone about what's bothering them so they end up getting deeper into the situation with no rational means of escape.

"For most people, the biggest obstacle to getting help is the fear of asking," said Sullivan. "Early detection and reporting procedures mean that everyone has to get involved to solve or treat

sulcidal behavior."

Norton Owen, a clinical social worker at FSC said some people are embarrassed or reluctant to seek help.

"Military personnel are trained to be responsible and tend to place much emphasis on being self-reliant and therefore, tend not to seek help when they need it," Norton added. "To seek help is a sign of strength, not weakness."

Norton stressed that no one is totally immune from the dangers of suicide. "Even small children can get overwhelmed with what's going on in their lives or those within their households," said Norton.

Norton also pointed out that national statistics indicate that women will attempt suicide just as often as men,

but men tend to be more successful in their attempts.

Norton said FSC is constantly assessing people to ensure that they're getting the services they need. "It's better to over react to a potential danger and be safe, than to not react at all," he added.

Browning said during his 14-year career in CID, he has been to 300-400 attempted suicide scenes to investigate and try to find the underlying causes through co-workers, families and friends.

"The majority of the people I interviewed, saw the signs of a potential suicide, but either denied what they saw or used misplaced loyalty in thinking they might get that person in trouble if they reported them," Browning said. "Most tried to handle the situations themselves without having the proper

training. Some thought time would help heal the individuals and their situation without appropriate treatment."

Browning said in most suicides, families, friends and co-workers are left with guilt and thoughts of "if I had only done this-or called someone-or gotten them help, they would be here today."

"I would rather report a potential suicide and be wrong 500 times, than fail to report that one incident and have a friend, relative or co-worker maimed or dead," said Browning.

Family Service Center officials here stressed that suicidal threats should be taken seriously. They pointed out that "you should trust your suspicions, because it's easy to predict suicidal behavior when a person shows most of the tendencies. But, they

warned that the signs are not always prominent. They said signs from many people are very subtle things like telling loved ones "goodbye" instead of "goodnight" may be the only clue.

Browning said "You can't harm a person by reporting your concerns, but you can love them to death by not reporting it. If you love and care about people or think someone might be suicidal, report it. It could mean the difference between life and death."

Anne E. Sturgis, community educator for the Suicide and Crisis Center in Honolulu, said the Center offers a free open support group meeting weekly for survivors of suicide (SOS). She said appointments can be made for families and friends who experienced the loss of a loved one to suicide, by calling the

Suicide/Crisis Hotline at 521-4555.

If you have any questions about someone's behavior, or are not sure how to handle a situation, contact a mental health care provider or any of the persons or agencies listed below:

Military Police Emergency, Provost Marshal's Office - 257-7114

Branch Medical Clinic Treatment Room - 257-3133

Family Service Center - 257-3655

Family Advocacy Representative, Branch Medical Clinic - 257-5023

Station Chaplain - 257-3552 or 257-2381 after hours

Joint Drug, Alcohol and Counseling Center - 254-1115/254-1117

Naval Base Pearl Harbor Mental Health Clinic - 471-3393

Crisis/Suicide Hotline - 521-4555

PIANO LESSONS
247-6010

JOHN SCHOUTEN 45-270 Waikalua Place, KANEHOE
EXPERIENCED • PROFESSIONAL • BUT NOT EXPENSIVE

KAILUA OPTICAL
Has One Hour Service On Most FT 28 and Single Vision Lenses.

CONTACTS from \$59
COMPLETE GLASSES from \$69
OVER 1,000 FRAMES

Kailua Square • Ulumu Street • 262-6191 Luke Jones, Owner

Lose Weight NOW!

I lost 23 lbs. between November & December last year . . . and have kept the weight OFF — without a diet!

CALL ME TODAY & START LOSING WEIGHT TOMORROW!
30 Day Money-Back Guarantee!

\$34⁹⁵ plus shipping & handling
ONE MONTH'S SUPPLY **263-3637**
FAX: 261-0630

LOCALLY STOCKED & AVAILABLE FOR NEXT-DAY DELIVERY ANYWHERE

ASK ME HOW YOU CAN BECOME A DISTRIBUTOR & MAKE MONEY TOO!

Mele Kalikimaka and Hauoli Makahiki Hou



FROM YOUR FRIENDS AT HALE KOA REALTY/BETTER HOMES & GARDENS
May your home be blessed with contentment, prosperity and joy in this holiday season. and throughout the New Year

KONA 329-2702 HAWAII KAI 396-9999

HALE KOA Better Homes Realty, Inc. and Gardens

WINDWARD 254-6444 LEEWARD 486-5555

ASSIGNMENT HAWAII

WHILE HELPING HER FRIEND ANN DO THE WASH, MARY JONES CONFIDED THAT HER KIDS STILL HADN'T GOTTEN THEIR PHYSICAL EXAMS.

I KNOW THE SCHOOLS REQUIRE THEM...BUT **CHAMPUS** DOESN'T COVER PHYSICAL EXAMS AND I JUST CAN'T AFFORD IT.

YOU SHOULD LOOK INTO **CHAMPUS** PRIME FROM QUEEN'S HEALTH CARE PLAN.

SIGH! WHAT DIFFERENCE WILL THAT MAKE?

PLENTY! THEIR **CHAMPUS** PRIME LETS YOU CHOOSE YOUR OWN PRIMARY CARE PHYSICIAN FROM A NETWORK OF DOCTORS ISLANDWIDE. AND IT'S THE ONLY **CHAMPUS** PROGRAM THAT COVERS PREVENTIVE CARE LIKE PHYSICALS.

BUT WHAT HAPPENS WHEN THE KIDS NEED SPECIAL CARE?

SOME TIME LATER...

LOOK. **CHAMPUS** PRIME HAS OVER 500 HEALTH CARE PROVIDERS IN JUST ABOUT EVERY SPECIALTY. AND THERE'S NO ENROLLMENT FEE. WHY NOT CALL NOW?

THANKS FOR THE ADVICE, ANN. WE'RE ALL ENROLLED IN **CHAMPUS** PRIME AND THE KIDS HAVE AN APPOINTMENT WITH A DOCTOR IN THE NEIGHBORHOOD.

THAT'S GREAT, MARY. NEED ME TO DRIVE?

CALL 522-7545 OR STOP BY. THERE'S A **CHAMPUS** SERVICE CENTER AT TRIPLER ARMY MEDICAL CENTER, AND AT TWO WATERFRONT PLAZA. WE'RE READY TO HELP YOU, TOO!

The Queen's Health Care Plan Inc.
You've Got a Friend

Youth games spread 'Aloha Spirit'

By Sgt. Reginald M. Cole

Five Air Station, 14 Oahu, and two California Tackle/Pee-wee Football teams hit the Aloha Stadium gridiron Dec. 2, to play in the 14th Annual Pan-American International Friendship Bowl.

According to the coaches, for the young football players, the Friendship Bowl is compared to the Super Bowl.

"This was something every kid on the team could look forward to," said Roger Brown, head coach for the Kaneohe Hurricanes Pee-wee Tackle team. "Although win and loss stats weren't kept during the regular season schedule, the boys learned a lot about sportsmanship and the game of football.

Every year, as part of the Friendship Bowl aloha spirit, teams from California are invited to the Air Station and surrounding bases for a week. The teams enjoy luau, is-

land tours, dinner cruises and other sight-seeing adventures together. According to Brown, the teams were like a big family until game day.

Although there were a total of nine games played during the Pan-American International Friendship Bowl, the Hurricanes and Wheeler Air Force Base Cobras had the only chance to play the California team.

Brown's Hurricanes, combined with the Cobras, mixed helmets to play the Chataworth Chiefs Pee-wees from California.

On the coin toss, the Hurricane/Wheeler team won and elected to receive. During the first action of the game, the Marine-Air Force team gambled on a tricky double-reverse punt return. To everyone's surprise, especially the Chiefs, it worked and the local team was up first 6-0. The Chiefs answered the

call by marching down the field to score a touchdown of their own. On a botched Marine-Air Force play, they managed to score another quick touchdown, to bring the score to 13-6. On both occasions, Chiefs' running back, Lance Williams was the workhorse responsible for the TDs. But by halftime, the Hurricane/Wheeler team had closed the gap and went into the locker room with a one-point deficit, 13-12.

Coming out for the second half, the Chiefs began to turn up the heat. With the combined strengths of a bigger-sized offensive line and the explosive running ability of Williams, the Chiefs quickly upped the ante. By the beginning of the 4th quarter, the California squad had a commanding 28-12 lead.

With 1:09 left in the 4th quarter, the Marine-Air Force

team began to show some signs of life. The Hurricane/Wheeler team scored on an end-around play from the Chiefs' seven-yard line. A quick screen pass instead of a field goal brought the score to 25-19 in Chiefs' favor.

With time running out in the game, the Marine/Air Force team attempted one last gamble to save the game with an on-side-kick. This time it didn't work and the Chiefs held on to win.

"I think the Kaneohe/Wheeler team has a lot of talent," said Scott Graham, head coach for Chataworth Chiefs. "If their weights were a little more compatible, we would have probably been in for a much closer game," said Graham. "The important thing is the kids got a chance to live and play with kids from Hawaii. From their reaction, they really enjoyed it and can't wait to come back next year."



Sgt. Brad Mizellari photo

3d Marines celebrate 84 years

Marines from Assault Amphibious Vehicles Detachment 3d Marines participate in a training exercise while deployed to Saudi Arabia. 3d Marines celebrate their 84th Anniversary today.

LIFECO
TRAVEL SERVICES

A FULL SERVICE TRAVEL AGENCY — OPEN TO MILITARY AND CIVILIAN

- ★ AIRLINE TICKETS
- ★ HOTEL RESERVATIONS
- ★ TOUR PACKAGES
- ★ AMTRAK
- ★ CRUISES
- ★ CAR RESERVATIONS
- ★ INTER-ISLAND RESERVATIONS
- ★ MILITARY & KANAAINA RATES

LOCATED TO SERVE YOU AT:
CAMP H.M. SMITH — AIEA 487-1567
KANEHOE BAY AIR STATION 254-4554
KANEHOE BAY POST EXCHANGE 254-3581

Fast Eddie's Nightclub & Eddie's Sports Bar Cafe
Present
New Years in New York
Monday, December 31, 1990

Deluxe Couples Package / \$25.00 Includes:
• Admission for two • Choice of reserved seats
• Large appetizer buffet for two • One bottle of champagne • One polaroid photograph
PRIZE GIVEAWAYS: 5 champagne limousine cruises under the Lantini Moon.

Deluxe Singles Package / \$15.00 Includes:
• Admission for one • Choice of reserved seats
• Large appetizer buffet • One champagne split
• One polaroid photograph
PRIZE GIVEAWAYS: 5 champagne limousine cruises under the Lantini Moon.

General Advance \$5.00
Includes: Admission & choice of reserved seat.
General Admission \$5.00 at the door

All 1990 New Years Eve Packages Include:
Countdown live from Times Square N.Y. • Hats, Party Favors, and a great party from 8pm-4am • Random door prizes throughout the night.
Plus: Spin the champagne bottle to win!

32 Oneawa St. • Kailua • Call for more info: 261-8561 • 21 yrs. & older

Have a joyous holiday!

Family Chiropractic Center

To Our Patients And Friends,

We wish you the warmest of Holiday Greetings and the best of health in the coming New Year.

Aloha,
The Doctors & Staff of Family Chiropractic & Windward Rehabilitation Centers

Schwarzenegger

Go ahead,
you tell him you didn't do your homework.

Kindergarten COP

As an undercover cop...he's in a class by himself.

OPENS DECEMBER 21ST AT A THEATRE NEAR YOU

Special Hours
Friday • Saturday • Sunday
10:00 a.m. to 9:00 p.m.

Last-minute Shopping Spree

Watch For Our In-Store Flyer With Special Savings On:

- LITTLE TIKES • GIFTWRAP
- CLOTHING • SHOES
- AND MUCH MORE

Marine Corps Exchange

Limited to Quantities On Hand
Marine Corps Exchange
Kaneohe Bay

Disbursing recognized

by Cpt. Reginald M. Cole

The Air Station Disbursing Office was the recipient of an appreciation award presented by Marine Aircraft Group 24 Commanding Officer, Col. Tim Curtis Dec 14. According to Curtis, the award was given to the office for their support of MAG-24 Marines in Saudi Arabia.

Curtis said whenever a problem arose concerning pay, the ombudsmen of the squadron were able to get the right answers from disbursing personnel.

Maj. Robert Jones, the Air Station's disbursing officer,

gives the credit to the 72 Marines and civilian personnel that work long hours to ensure some 10,000 Marines get paid. The personnel at the Disbursing Office are responsible for maintaining pay records for all Brigade and Station Marines. Although approximately 95 percent of the Marines here are on direct deposit, disbursing personnel must be able to intercept any problem that may arise.

Another example of disbursing's extra efforts was when VMFA-212 and 232 departed for Saudi Arabia. The

majority of the MAG Marines were leaving days before the next pay period, and the disbursing office personnel worked on through the weekend to ensure the Marines were paid.

According to Jones, Sgt. Ben Richardson, special project coordinator and Sgt. Karen Golden, operations chief, were instrumental in creating a communication link between the ombudsmen and the Disbursing Office.

"Most of the Marines in Saudi Arabia say they appreciate the effort disbursing is showing by keeping Marines and their families paid by using the split-pay method," said Curtis.

Facilities builds giant holiday tree

by Cpt. Reginald M. Cole

A 45 foot tree erected near the Main Gate entrance is the latest sign that Christmas is fast approaching. The tree, constructed mostly with discarded equipment, is the work of the Facilities Department Electric Shop workers.

"We managed to scrounge up a switch from an old traffic box," said Dennis Schull, the shop's electrical foreman. "The only thing we had to purchase was the lights."

The tree, which took a week to build, has approximately 3,300 light bulbs that are staggered to create a spiral effect.

Four years ago, similar trees were built near Ulupa'u Crater and atop Kanaa Tower.

"The plan is to leave it up until after New Year's Day, but we hope to keep it up until our Marines and sailors come home from Saudi Arabia," Schull said. "It'll be our light of hope."

COMPUTATE
926-3283

Video Dating for Men & Women

Hawaii's only computerized video dating club. Call for details.

2136 Kalia Ave., Bldg. 6 Room 214 WAIKIKI

WHEN TRYING HARDER HASN'T HELPED...

TRY HYPNOSIS

FOREVER TRIM A LIFE CHANGING WEIGHT CONTROL PROGRAM
FOREVER FREE! A GUARANTEED STOP SMOKING PROGRAM

CALL FOR FREE INTRODUCTORY TAPE

JOHN DAUGHTERS, M.S.
Certified Hypnotherapist

JOHN DAUGHTERS, M.S.
262-5911

Marine-O Pizza

We're Open Daily 1100-2300 hrs.
Fri. & Sat. 1100-2300 hrs.
For Walk-in and Take-Out Orders
Delivery Service from 1700-2100 hrs.
Fri. & Sat. 1700-2300 hrs.

FREE Delivery

Call 284-1837, 284-1838, 284-1839

Lanes
Baseball Cards and Comics

262-0597

MON-FRI: 1-7
TUE: CLOSED
SAT: 10-6
SUN: 11-4

418A Kuuilei Rd. • Kalia
(behind McDonald's)

BARGAIN AIRFARES
732-5533

SEATTLE, PORTLAND	OW	RT
Salt Lake	\$260	\$389
LOS ANGELES, SAN FRANCISCO, SAN DIEGO	\$139	\$249
BOSTON, NEW YORK, MIAMI	\$270	\$478
PITTSBURGH, WASH., D.C., BALTIMORE	\$270	\$478

Phoenix \$328 Christmas Special Fares (rt)
Salt Lake \$486 West Coast \$248 Midwest \$398
Kansas City \$480 \$298 East coast \$448
El Paso \$369 Outbound: December 14-27, 1990
Tucson \$358 Return: December 29-January 7, 1991

Limited availability, Penalties, & Restrictions.
Midweek travel. Limited availability. Restrictions. Advance purchase. Penalties. Fares subject to change without notice. Tax not included.

ROYAL ADVENTURE TRAVEL
2012 Harding Avenue, Suite 101, Honolulu, Hawaii 96818

Former Prosecutor/
Experienced Trial Lawyer

JAMES M. PALLETT
ATTORNEY AT LAW

Special Emphasis on D.U.I.,
Criminal Defense, and
Personal Injuries

(808) 528-3468

Pioneer Plaza
900 Fort Street, Suite 1777 Honolulu, Hawaii 96813

Lex Brodies
30-MINUTE
TIRE INSTALLATION!
(SAVE TIME WITH AN APPOINTMENT)

TOYO TIRE SALE!
(Until Sat., Dec. 29, 1990)
FOR BIG SAVINGS!

TOYO 300
BLACKWALL STEEL RADIALS
40,000 MILES (AVG.)

TIRE SIZE	MS. RETAIL PRICE	FULL SERVICE PRICE
P155/80R12	26.25	41.25
P155/80R13	27.25	42.25
P155/80R13	28.25	43.25
P185/80R13	32.75	47.75
P175/80R14	38.75	53.75
P185/80R14	40.25	55.25
P185/80R15	38.50	53.50

TOYO 300
BLACKWALL STEEL RADIALS
PERFORMANCE TIRES!
40,000 MILES (AVG.)

185/70R13	37.25	52.25
175/70R13	38.25	53.25
185/70R13	43.00	58.00
185/70R14	45.25	60.25
195/70R14	48.75	63.75

TOYO 751
WHITEWALL STEEL RADIALS
40,000 MILES (AVG.)

P155/80R13	31.50	46.50
P185/80R13	36.25	51.25
P175/80R13	39.25	54.25
P185/80R13	43.75	58.75
P185/75R14	46.75	61.75
P195/75R14	50.00	65.00
P205/75R14	54.25	69.25
P215/75R14	58.75	73.75
P205/75R15	57.00	72.00
P215/75R15	60.00	75.00
P225/75R15	61.75	76.75
P235/75R15	69.00	84.00

TOYO 800
WHITEWALL STEEL RADIALS
60,000 MILES (AVG.)

P155/80R13	38.75	53.75
P185/80R13	44.00	59.00
P175/80R13	47.75	62.75
P185/80R13	52.75	67.75
P185/75R14	56.25	71.25
P195/75R14	60.00	75.00
P205/75R14	65.00	80.00
P215/75R14	70.00	85.00
P195/75R15	62.75	77.75
P205/75R15	68.25	83.25
P215/75R15	71.50	86.50
P225/75R15	73.75	88.75
P235/75R15	79.50	94.50

TOYO 800
BLACKWALL STEEL RADIAL
PERFORMANCE TIRES!
60,000 MILES (AVG.)

P175/70R13	44.00	59.00
P185/70R13	48.75	63.75
P185/70R14	52.00	67.00
P195/70R14	55.50	70.50

(other sizes available)

TOYO F-7
RAISED WHITE LETTERS
HIGH PERFORMANCE TIRES!
40,000 MILES (AVG.)

175/70HR13	55.75	70.75
185/70HR13	62.00	77.00
185/70HR14	65.00	80.00
195/70HR14	69.50	84.50
205/70HR14	75.25	90.25
215/70HR14	77.75	92.75

TOYO F-6
BLACKWALL STEEL RADIAL
HIGH PERFORMANCE TIRES!
40,000 MILES (AVG.)

185/60HR14	69.75	84.75
195/60HR14	74.50	89.50
205/60HR14	85.50	100.50
215/60HR14	86.75	101.75
195/60HR15	79.00	94.00
205/60HR15	91.00	106.00
215/60HR15	96.75	111.75

Yes! We have good used tires at bargain prices! Come see us!

There is NO BETTER TIRE PROGRAM IN HAWAII COME SEE US!

Lex Brodies TIRE COMPANY
MON, THRU SAT. 9 a.m. to 5 p.m.
Waipahu Honolulu
86-1881 Kalia Hwy. (near Kalia) 791 Kalia Dr.
Ph. 871-4561 Ph. 536-9361

Give the gift that everyone loves to receive... from AT&T

AT&T The right choice.

Answering System 1301
\$4895

You never have to miss another call! Convenient one-touch playback of all messages. Ringing indicator light lets you know how many messages you have received. Single cassette record messages both incoming and outgoing messages. Record or delete entire blocks of text. Easy reading monitor screen for improved readability and text display. Other features include full features calculator, full screen edition, personal dictionary, and global search and replace of 77,000 word main spelling dictionary along with 200 word phrases. Disk stores up to 300 pages of information with memory check that shows how much space is still available. Quality printing features include bold, italic and underline. Its printing speed of 30 to 90 characters per second. Easy to understand tutorial disk explains use of many features.

AT&T The right choice.

Word Processor WP7700
\$57095

AT&T quality in an easy to use word processor. Plain English menus for fast, easy access to features. 90-key keyboard, including foreign characters and convenient "help" key, which makes inquiries easy. You can move, copy or delete entire blocks of text. Easy reading monitor screen for improved readability and text display. Other features include full features calculator, full screen edition, personal dictionary, and global search and replace of 77,000 word main spelling dictionary along with 200 word phrases. Disk stores up to 300 pages of information with memory check that shows how much space is still available. Quality printing features include bold, italic and underline. Its printing speed of 30 to 90 characters per second. Easy to understand tutorial disk explains use of many features.

AT&T The right choice.

Portable Electronic Typewriter 6200
\$11595

Now, the features you want most in a portable typewriter. Errors disappear — with a single touch. Great formatting features permit centering lines and automatic printing test with flush right margin. Underline automatically, use decimal tabulating and other special features to make your documents look professional.

AT&T The right choice.

Cordless Telephone 4200
\$6395

Improved battery design allows you to use handset for several days without returning it to the base for recharging. Expanded digital security system changes your security code automatically to prevent unauthorized use of phone line. Full range performance for clear reception indoors and outdoors. Features include last number redial, audible out-of-range indicator, receiver volume control, and it's convertible for indoor or wall use. Selectable dialing for use with tone or rotary service. Convenient user-replaceable battery and antenna.

AT&T The right choice.

Speakerphone 720
\$5495

- Improved Hands-Free Speakerphone
- Remembers 16 Phone Numbers
- Hold Feature Automatically Releases When You Pick Up
- An Extension Phone
- Handset and Speakerphone Volumes Can Be Adjusted For Best Listening Level
- Redials Last Number Dialed
- Flash Feature Makes Access To Special Telephone Services Easy
- Ringer Adjusts From Loud To Off

AT&T The right choice.

Clock Radio Telephone 330
\$4895

Now you have the convenience of an AT&T telephone with a clock radio! The telephone features 3 emergency dial buttons, lighted handset dial, mute feature, last number redial and ringer volume control. The clock radio offers an AM/FM radio, digital clock, automatic radio mute, wake up either by music or tone alarm, snooze control and radio timer. Telephone is hearing aid compatible.

Lex Brodies
TIRE COMPANY

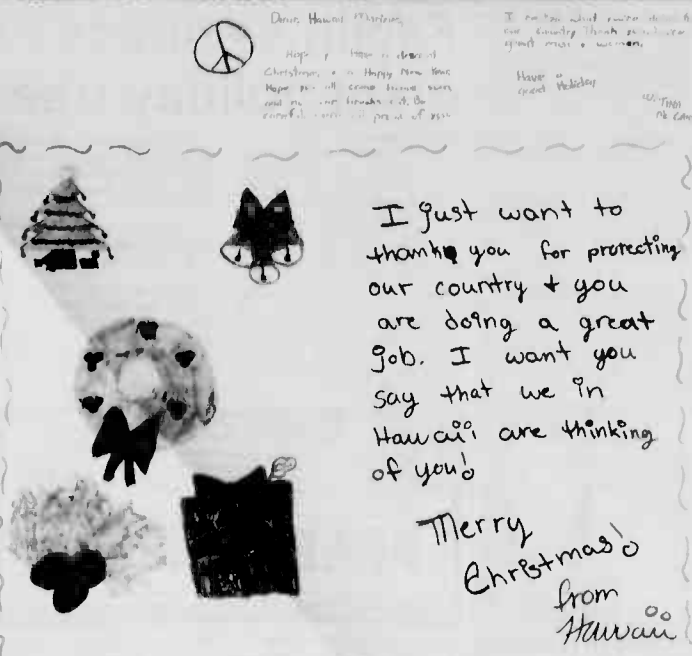
MON, THRU SAT. 9 a.m. to 5 p.m.
Waipahu Honolulu
86-1881 Kalia Hwy. (near Kalia) 791 Kalia Dr.
Ph. 871-4561 Ph. 536-9361

SAVE UP TO \$200!
WITH FAST GAS AT
Lex Brodies
HONOLULU & WAIPAHU

Kids send holiday cards to deployed

Through words and pictures, 65 Kailua Intermediate School students expressed their holiday greetings in Christmas cards sent to the Station's Marines and sailors deployed to Operation Desert Shield.

The pupils are all 7th and 8th graders, and the project was assigned in French and Spanish classes taught by Cynthia Sluder. Fifteen of the students have parents deployed in Saudi Arabia.



Bargain Air

LOWEST AIR FARES TO THE WORLD

LOS ANGELES/SAN FRANCISCO	FROM \$262 RT
SAN DIEGO	FROM \$297 RT
HOUSTON	FROM \$498 RT
MILWAUKEE	FROM \$519 RT
FLORIDA	FROM \$507 RT

MANY MORE DESTINATIONS • RESTRICTIONS APPLY • FARES SUBJECT TO CHANGE

537-2355
1221 KAPOLANI BLVD., STE. 1030
TA 1152

Shop, Swap or Sell FREE!

7 DAYS A WEEK

DEC. 15th THRU CHRISTMAS EVE

FOR YOUR HOLIDAY SHOPPING CONVENIENCE

KAM SUPER SWAP MEET

NOW OPEN WED., SAT., & SUN
DAILY DEC. 15th THRU DEC. 24th, 1990

- WIDE SELECTION OF NEW MERCHANDISE • GROCERY ITEMS
- FRESH FRESH PRODUCE • FROZEN SEAFOOD & MEAT PRODUCTS

KAM "SUPER" SWAP MEET
OPPOSITE PEARLRIDGE CENTER • OPEN 6 AM - 3 PM
PHONE 488-5822 or 847-1989

CHRISTMAS KOA FURNITURE

30% OFF SALE

FINANCING NOW AVAILABLE!

See for yourself just how beautiful Koa furniture can be.

Hawaiian Heritage Furniture
2870 Ualena St.
2nd Right off of Lagoon Drive near Airport

**HOURS: M-F 9:00-5:30
Sat 9:00-5:00** **839-6656**

Christmas With the Hawaii Youth Symphony

Traditional and Popular Holiday Favorites

13
Christmas Eve at 7pm
& Christmas Day at 5pm **KHNL**

Sponsored by Central Pacific Bank

CARQUEST AUTO PARTS STORES

Mini Trio Gauge \$2399
Oil pressure, amp and water gauge. Easy to install. Adapter included. Mfr. may vary.

Twin Air Horns \$1999
Compact 12V system for autos, vans, trucks and RVs. Easy to install. Mfr. may vary.

MacForms Macadamia Nut Brittle \$4.59
TWIN 8-OZ. CANS
MacForm of Hawaii's famous cans of roasted, salted Macadamia's.

OH WHAT FUN IT IS TO SAVE!

G.E. Specialty Christmas Lite Sets \$10.99
Have 40 light candy cane set with 40 lights for any holiday setting. OCL2-40

CARQUEST CRUSHER \$9.99
Real 4 wheel drive. Racking engine sounds. Full recoil handle to start. SM to rev up. *287400
Limited Quantities (Requires 2 "AA" batteries not included)

BOSCH PLATINUM Spark Plugs \$1.99
Bosch platinum 99.9% platinum center electrode. The ultimate spark plug.

Carquest* The Spirit of Christmas Cassette Tape \$3.49
New cassette. Ray Charles' "Fly Me to the Moon" featuring the original recording of the song. Includes 100% guarantee.

VISE-GRIP Oil Set \$12.99
Home and hobby oil lubricant. 17" long nozzle and 7" curved top. Working parts. *1218

Electric Engraver Set \$8.99
Use it like a pencil for engraving, etching and fine line engraving on metal, wood, etc. price \$8.99. *118

Flourescent Trouble Light \$22.99
With 25 ft. cord and built-in hook. *21221A

SOLAR BATTERY CHARGERS 6 Amp Manual \$29.99
*1106

Lumilite Pocket-Size Flashlight \$3.99
New single AA battery. Full charging. 100% guarantee. Limited quantities.

Carquest Wiper Blades or Rollers \$3.99
16" to 18" blades or roll. 16" or 20" blades or roll of rolls. *1106

68-Piece 1/4" AND 3/8" Drive Socket Set \$69.99
Metric and inch sockets deep sockets. Comes with ratchet. No carrying case. *10049

Blackhawk HAND TOOLS

HONOLULU
FERRELLA AUTO PARTS
1275 Ala Moana Blvd
241-8818

GENERAL AUTO PARTS SUPPLY
3333 Ala Moana Blvd
241-7748

KANEHOE AUTO PARTS
3042 K Kaneohe Hwy
241-7292

LEIHA AUTO PARTS
1444 Lele Hwy
424-8877

MC CUNE AUTO PARTS
1851 South King Hwy
241-4444

BALT LAKE AUTO PARTS
127 Ala Moana Blvd
241-7748

WC AUTO SUPPLY
1275 Ala Moana Blvd
241-7748

HAWAII AUTO PARTS
1011 Ala Moana Blvd
241-7748

MIDWAY AUTO
1011 Ala Moana Blvd
241-7748

LEIWAARD AUTO PARTS
1011 Ala Moana Blvd
241-7748

COUNTRY AUTO PARTS
1011 Ala Moana Blvd
241-7748

GEORGE & AUTO PARTS
1011 Ala Moana Blvd
241-7748

LEIWAARD AUTO PARTS
1011 Ala Moana Blvd
241-7748

MILANI AUTOMOTIVE SUPPLIES
1011 Ala Moana Blvd
241-7748

HAWAII
MAGDO'S AUTO PARTS
1011 Ala Moana Blvd
241-7748

WAINANA AUTO PARTS
1011 Ala Moana Blvd
241-7748

MIDWAY
AL AUTO PARTS
1011 Ala Moana Blvd
241-7748

RE AUTO PARTS
1011 Ala Moana Blvd
241-7748

KANEHOE AUTO SUPPLY
1011 Ala Moana Blvd
241-7748

SALE PRICES GOOD NOW THRU DEC. 31, 1990 AT PARTICIPATING CARQUEST STORES

YOU'LL FIND IT AT CARQUEST



Nikki Hamilton, her sister Corey and friend Daniella Ozolnieks, were among several local scouts who sang Christmas songs at the beginning of the day. Nikki, 6, is with Brownie Troop 347, while her sister and friend, both 5 are members of Daisy Girl Scout Troop 708.



A young visitor to Santa's Village does her best to hold still while a make-up artist paints a Christmas tree on her cheek at the Staff NCO Wives Club booth.

Santa, elves set up shop at Air Station

Story and photos by Cpl. Jason Erickson

St. Nick and his helpers came to the Air Station for the annual Santas Village party, but he couldn't have pulled off the event without the help of hundreds of local volunteers and generous donations by sponsors.

The all-day Dec. 14 event drew in excess of 5,000 people into Hangar 105 here to enjoy more than 30 activity booths. These included pictures with Santa and Rudolph, and radio communication with "the North Pole," courtesy of the Military Affiliate Radio System.

Dan Dufrene, Recreation Operations supervisor for MWR, said the event was pulled off at minimal cost to MWR thanks to the contributions of several sponsors, especially Kahi Mohala, a private counseling organization.

Susan Miles, MWR Marketing director, said this was the first time sponsors were involved, which greatly enhanced the event.

"Sponsorship accounted for about 75 percent of the cost of Santa's Village," Miles said.

Cost was down, but attendance was up, according to Dufrene. "I think we drew more people this year than last," Dufrene said. "That's kind of surprising considering the number of Marines and sailors who are deployed."

In addition to the activity booths, children in the Kaneohe Dance Academy performed a series of ballet, tap and jazz dances for the crowd in the morning. In the afternoon, Mr. Amazing Magician dazzled the crowd and was followed by 11- and 12-year-old Kaneohe cheerleaders and finally a fashion show.

The booths were set up and manned by a combination of 11 MWR Recreation activities and 11 private organizations such as Boy and Girl Scouts, the American Red Cross and the Staff NCO and Officers' Wives Clubs. Some of the booths sold food, some had games set up. Others allowed attendees to make Christmas cards, send free messages to Saudi Arabia, make ornaments or have their faces painted in the spirit of the season.

"It seems like the event gets a little bigger and a little better every year," Dufrene said.

"It seems the event gets a little bigger and a little better every year."

— Dan Dufrene



"St. Nick Jr.," 5-month-old Brandon Blowey, and his 22-month-old sister Natalee, pose for a picture with the older Santa Claus during the annual Santa's Village extravaganza.



A group of girls with the Kaneohe Dance Academy perform a jazz number for spectators at Santa's Village.



Jason Starkey leads a group of Boy Scouts across the hangar using an unusual means of transportation furnished by Santa's Village sponsor Kahi-Mohala.

Holiday Events

Keiki Christmas Party

Sea Life Park and KCCN are sponsoring their annual Keiki Christmas Party for underprivileged children Saturday from 10:30 a.m.-3 p.m. Volunteers are needed to escort children on buses, during their day at Sea Life Park, and to help serve food. To sign up, call Rhoda at 536-2728 Monday-Friday from 8 a.m.-5 p.m.

Parade of Lights

The Makani Kai Yacht Club invites the Ala Wai Community to watch the 10th Annual "Parade of Lights" Saturday at 6 p.m. Best viewing will be from the pier located near the Marina. The boats will pass the pier around 7 p.m. Santa will be on the lead boat.

Christmas Food Drive

The Staff NCO Wives' Club has kicked off its Annual Holiday Food Drive. Donations of canned or dry goods will be accepted at the Thrift Shop, Family Services, Armed Services YMCA and the Chapel. These baskets will be distributed to needy Kaneohe Bay families at Christmas. To submit a family for a food basket call Carole Pajari at 254-4719.

Windward Community Christmas Dinner

Marines, sailors and their families are invited to volunteer and/or participate in a community Christmas dinner Dec. 25 at Aikahi Elementary School. The dinner will be free, and will take place from noon - 2 p.m. Santa Claus will be there with gifts, entertainment and Christmas carols. Volunteers for two shifts are needed to welcome people, serve dinner and help clean-up. Those volunteering on the first shift will be served on the second shift, and vice versa. Schools and

non-profit organizations wishing to create gifts and help with wrapping or decorating are also encouraged to sign-up. A collection bowl will be available at the dinner for those able to make a contribution for next year's dinner. Those wishing to volunteer and/or participate should call the Family Services Center at 257-3655.

Volunteers Needed For 'First Night'

"First Night Honolulu" will provide an alcohol-free alternative to traditional New Year's Eve indulgences. Already celebrated in about 60 North American cities, this is the first time "First Night" will take place in Honolulu. It was made possible through a grant from the Hawaii Community Foundation. Volunteers are needed to perform work before and during the event which include: office help; button sales; coordinating help; technical assistance and ushers. For more information, call 523-3131.

Hale Koa Christmas Festivities

The Hale Koa Hotel will offer a Christmas Eve buffet dinner and show and a Christmas Day buffet. The Christmas Eve schedule begins with an international buffet, featuring roast baron of beef, which will be served from 6-7:30 p.m. the show will begin at 8 p.m., and will

feature caroling and other holiday entertainment. The cost for dinner, show and gratuity is \$15.95 for adults, and \$7.95 for children. The Christmas Day feast will take place from 10 a.m. - 3 p.m., and will cost \$14.95 for adults, and \$6.95 for children. Also, dinner will be served in the Hale Koa Room from 5-9 p.m. on Dec. 25. Call 955-0555 for reservations.

'First Night': Alcohol-Free New Year's Eve Celebration

"First Night Honolulu" is an alcohol-free New Year's Eve celebration which will offer performances, art and entertainment in many downtown locations. The event will begin with a children's party at Bladell Exhibition Hall, from 2:30-5:30 p.m. Entertainment and activities will include storytellers, puppets, theater groups, a maze and a mask-making workshop. From 6:30 p.m. - midnight, entertainment to include psychics, acrobats, hands and ballet will be offered at a variety of locations. The new year will be ushered in at midnight with the explosion of fireworks over Honolulu Harbor. A "First Night" button costs \$5, and will admit adults to all events. Children are free. On Station, buttons and complete schedules are available through MWR Tickets and the Family Service Center.

New Year's Eve at Hale Koa

The Hale Koa Hotel is offering three celebration options to help ring in the New Year. A "Nostalgia" party will be held in De Russy Hall, beginning at 7 p.m., and will feature favorite tunes of the 1950s, '60s and '70s. The \$39.95 price includes an international buffet featuring prime rib, a glass of wine with dinner, entertainment, dancing, party favors, a champagne midnight toast and gratuity. The hotel's "Gala" alternative will also begin at 7 p.m., in the Banyan Tree Showroom. The \$49.95 per person cost includes an elegant sit-down dinner with a glass of wine in the Banyan Tree Showroom. Entertainment and dance music by "Kona Winds" will follow dinner, and the night will be topped off with a champagne toast at midnight. Finally, the Waikiki Ballroom will be transformed into a "Manhattan Style Disco," beginning at 8 p.m. Admission is \$8 per person for a night of dancing to the top 40 releases of 1990, spun by a live DJ. Refreshments will be avail-

able for purchase. Tickets for all three events may be purchased at the Hale Koa Activities desk or any MWR ticket outlet.

Mrs. Cadet Sullivan at 235-1408.

Honolulu Christmas Event Schedule

The following free holiday events are sponsored by the City and County of Honolulu, and are open to the public:

Thursday, noon - 1 p.m. "The Honolulu Madrigals" will perform at the downtown Liberty House.

Friday, noon 2 p.m. "Something Special" will perform Christmas carols at the downtown Liberty House.

Saturday, 11 a.m. - 2 p.m. A Christmas party featuring Santa will take place at Maunakea Marketplace.

Monday, noon - 1 p.m. "Voices IV" will be the featured musical entertainment at the downtown Liberty House.

Wednesday - Saturday, 6-9 p.m. Holiday tours of the Iolani Palace will take place every 10 minutes.

For more information, call 523-4385.

Salvation Army Needs Gifts, Volunteers

The Salvation Army will provide food and gifts for needy people over the holiday season through a variety of programs which thrive on public support. Shoppers are asked to throw their spare change into "Christmas Kettles," as donations. Also, "Angel Trees" are set up at Kahala Mall and Windward and Pearlridge Shopping Centers. On these trees branches are paper angels with the names and ages of needy children and senior citizens, and gift ideas for them. Participants are asked to choose an angel, and purchase a corresponding gift, which will be wrapped and presented to that person. Along with contributions, volunteers are needed to man the "Christmas Kettles" and "Angel Trees." For more information, call

ARRESTED FOR DRUNK DRIVING?
CALL
NOAH D. FIDDLER
Attorney at Law
Free Consultation
545-7400/261-3233

HAWAIIAN PHONE PERSONALS
Talking personal ads from local men & women. Now record your own ad using our private voice mail. Other callers record replies for you on our system. No need to give out your phone #.
Free info 948-4337
.95/min.
1-800-454-3210

MEET FUN RIDES
• Parties
• Grand Openings
• Special Events
• Corshies & Games
• Fundraisers done on percentage basis
• Tent Rentals & Games
• Popcorn, Cotton Candy, Snow Ice, Soda, Kiosks
Tickets avail.
PH. 671-3661
CARNISELS \$100 plus delivery for 4 hrs.

TAKE OVER PAYMENTS
Autos, Trucks, Vans, 4x4's
"NO CREDIT CHECK"
FREE Credit Repair
FREE Mastercard
FREE Re-establishment of good credit
AMERICAN FINANCIAL GROUP
444 Hobron Lane #307
524-7777 Ext. 10

HOLIDAY THEATRES
Enchanted Lake Cinemas
1060 Keolu Dr. 263-4171
JOHN TRAVOLTA
KIRSTIE ALLEY
MIKEY'S BACK
LOOK WHO'S TALKING TOO
515, V.G.9
Sat, Sun & Tue: 12:30 & 2:45

HOME ALONE
8, 7:30 & 9:45
Sat, Sun & Tue: 12 & 2:15

Three Men and a Little Lady
5:30, 7:45 & 10
Sat, Sun & Tue: 12:15 & 2:30
KAILUA 261-9103

MISERY
5:30, 7:45 & 10
Sat, Sun & Tue: 12 & 2:15
LAIE 293-8488
PATRICK SWATZ
DEAN MOORE
WHOOPI GOLDBERG
GHOST
1:30 & 5

TOWER HOLIDAY SALE
WRAP IT UP!
CD • CASSETTE • MUSIC VIDEO SALE
1,000'S OF GIFT IDEAS
COMPACT DISCS 7.99 TO 11.99
CASSETTES 3.44 TO 7.99
MUSIC VIDEOS AS LOW AS 12.95

BUDGET CD'S
AEROSMITH - GREATEST HITS - 7.99 CD 3.44 CASS
SIMON & GARFUNKEL - Bridge Over Troubled Water - 7.99 CD 3.44 CASS
HEART - Greatest Hits - 11.99 CD 7.99 CASS
SADE - Stronger Than Wine - 7.99 CD 3.44 CASS
JAMES TAYLOR - Greatest Hits - 9.99 CD 5.99 CASS
THE B-52's - Love Shack - 9.99 CD 5.99 CASS
PETER, PAUL & MARY - Best of Peter, Paul & Mary - 9.99 CD 5.99 CASS
DEBBIE GIBSON - Out of the Blue - 9.99 CD 5.99 CASS

LOU RAWLS - It's Supposed to Be Fun - 11.99 CD 7.99 CASS
STANLEY JORDAN - Comedies - 11.99 CD 7.99 CASS
JOE WILLIAMS - That Holiday Feeling - 11.99 CD 7.99 CASS
KEITH JARRETT - KEITH JARRETT PARIS CONCERT - 11.99 CD 7.99 CASS

CHOOSE FROM THESE AND MANY MORE!
LINDA RONSTADT - Greatest Hits 9.99 CD 5.99 CASS
MOTLEY CRUE - Too Fast For Love 9.99 CD 5.99 CASS
AC/DC - Who Made Who 9.99 CD 5.99 CASS
BUFFALO SPRINGFIELD - Retrospective 9.99 CD 5.99 CASS
GENESIS-ABACAB - 9.99 CD 5.99 CASS
ALL SUPER SAVERS ARE ON SALE FROM WARNER BROS., ATCO, ELEKTRA, ATLANTIC, GEFEN & VIRGIN.

MUSIC VIDEOS
CHOOSE FROM THESE AND MANY MORE!
FRANK SINATRA - The Inimitable Sinatra Collection - 16.95 VHS
STEVE RAY VAUGHAN - Live Through This - 16.95 VHS
BILLY JOEL - The Stranger - 16.98 VHS
10,000 MANIACS - Time Capsule - 16.95(VHS)
PHIL COLLINS - Seriously Live - 16.95(VHS)
DEBBIE GIBSON - Live Around The World - 16.95(VHS)
ENUFF Z'NUFF - Enuff Z'Nuff 12.95(VHS)
OPEN ON CHRISTMAS DAY!

TOWER RECORDS VIDEO
HONOLULU 611 & 638 Keeaumoku
Across Kapiolani From Ala Moana Center
AIEA Pearl Kai Center
Across From Pearlridge Shopping Center
MUSIC VIDEOS • VIDEO SALES & RENTALS!

At A Glance

Toy Assembly

Marines from Co. B, 7th Communication Bn. will be assembling toys for wives of deployed Marines and sailors Sunday from 4:30-7 p.m. For more information call 1stSgt. Nacoste at 267-5986.

Pyramid Beach Holiday Fest

There will be a Holiday Fest at Pyramid Beach Dec. 29 from 8-5 p.m. Two competitions will take place: Surfing and Boogie board Competition beginning at 8 a.m.; and a Beach Volleyball Tournament beginning at noon. Surfing is for ages 14 to adult and Boogie Boarding is for ages 12 to adult. Entry fee is \$15 for these two contests and includes a T-shirt. Beach volleyball is a double elimination tournament. Each team can have a maximum of eight players and six will be on the court at a time. Entry fee is \$90 per team and includes eight T-shirts. Entries must be received at the Station pool by Friday. For more information, call 254-6278.

Commissary Hours

The Kaneohe Bay and Pearl Harbor Commissaries will be closed Christmas and New Years Day.

Holiday Lighting Tours

Evening harbor holiday light tours will be conducted at Pearl Harbor Sunday from 7-9 p.m. Tours will start at the Arizona Memorial Visitor Center and leave by boat at 15-20 minute intervals. Visitors will see the numer-

ous decorated ships and shore commands competing for the "Best Decorated" awards. For more information, call 471-0281.

Animal Clinic Hours

The Animal Care Clinic has new holiday hours. The Clinic will be closed Christmas and New Year's Day. Appointments will be available Wednesday, Dec. 28 and Jan. 2 from 12:30-2:30 p.m. Normal Clinic hours will resume Jan. 3. Resale hours remain the same except the facility will close today at 11:30 a.m. For more information, call 254-4201.

Pre-holiday Discounts

Outrigger Hotels is offering a pre-holiday military discount through Christmas eve. For more information, call Mildred Courtney at 941-2204.

Remedial Education Services

Scholastic Aptitude Test review classes will begin here Jan. 5. Classes will be held on five consecutive Saturdays from 8 a.m.-2 p.m. Armed Forces Classification Test review classes will begin Jan. 7 and will be held Mondays through Thursdays for five weeks. Register for both classes at the Joint Education Center through Jan 3. The free classes are also available to spouses of deployed personnel. For more information call 254-1703 or 2901.

Troy State Registration

Registration for Term III will continue through Jan. 4. Courses being offered are: Hickam Air Force Base Administration of School Personnel, Problems in Early Education and State and Local School Administration; Wheeler Air Force Base

Education Sociology. For more information, call 449-5320.

Blood Drive

Tripler Army Medical Center will be conducting a blood drive Dec. 27, from 1-3 p.m. The blood drive will be held in the Blood Donor Center located on the second floor of A-Wing. For more information, call 433-6828.

USO Volunteers Needed

USO of Hawaii is in need of volunteers at each of its three centers. Join others in serving the people who serve our country. For more information, call Donna at 836-3351.

Help Recycling Program

The following items can be recycled through the Air Station Recycling Program: Brass; copper; steel; alumi-

num cans, cookware, lawn furniture, rain gutters and castings; glass bottles (unbroken); cardboard; bond paper;

newspaper; magazines; computer paper, keypunch cards. For a pick-up, call Ralph King at 254-5871.



New resort opens

Servicemembers and their families have a new vacation opportunity with the opening of the newly renovated Waianae Army Recreation Center, on Oahu's west coast. WARC features include a variety of accommodations, a beach, water sport activities, a restaurant and a club.

Why Burn Money?

Save by refacing instead of buying new.

- Kitchens
- Bathrooms
- Oak Pulls
- Koa Pulls
- Counter Tops
- Cabinet Doors
- European Hidden Hinges
- Formica®/Laminate

Free Estimates/Consultation

ESSENTIAL CABINET REFACING 599-7762

HOURS: 7 AM to 7 PM P. O. Box 11605, Honolulu, HI 96828

FOUR CHANNEL
TV, VCR, STEREO
AIR CONDITIONER
MICROWAVE
REPAIRS
ALL BRANDS

FREE PICKUP, DELIVERY SET UP IN YOUR HOME

CALL
HONOLULU 521-0732
1108 AUANI ST. (Across Wawa Centre)

WINOWARD 263-9750
602 KAILUA RD. (Wino Ward Trade Center)

NOW AVAILABLE IN HAWAII!
EXCLUSIVE PATENTED PROCESS
NON SURGICAL

• Correct your Hair Loss with PERMALOC
The Permanent Hair Replacement and Restoration for Men, Women & Teens
• Responds Naturally To Water & Wind
• Specializing in all types of Hair Loss • Chemo-Therapy • Radiation • Alopecia • Male Pattern Baldness • Burn Victims • Integrate Existing Hair with NEW HAIR

Military Discount Available

CALL TODAY FOR FREE PRIVATE CONSULTATION

M-F 9-9
Sat. & Sun. 9-4

521-9906
By Appointment Only

European HAIR REPLACEMENT
1018 BISHOP ST. 8A01
EXECUTIVE CENTER

For Baby

ISLAND BABY
Equipment and Accessories

- Cribs/High Chairs/Strollers
- Custom Bedding & Wallcovering
- Special Order Catalogs
- Maternity/Nursing Items
- Lamps & Much More

262-0726
22 Oneawa Street
Kailua, Hawaii 96734

"The Specialty Shop with Discount Prices"

TOWER HOLIDAY SALE

WRAP IT UP!

CD • CASSETTE • MUSIC VIDEO SALE
1,000'S OF GIFT IDEAS

COMPACT DISCS 11.99
REG. 13.99 & 14.99

CASSETTES 7.99
REG. 8.44, 9.44 & 10.44

THESE TITLES ON SALE NOW!

W I T S

PHIL COLLINS PHIL COLLINS 16.99 CD 10.99 CASS	CARLY SIMON CARLY SIMON 11.99 CD 7.99 CASS	VANILLA ICE VANILLA ICE 11.99 CD 7.99 CASS	GODFATHER III THE GODFATHER PART III 11.99 CD 7.99 CASS	TRAVELING WILBURYS TRAVELING WILBURYS 11.99 CD 7.99 CASS	SCORPIONS SCORPIONS 11.99 CD 7.99 CASS
JIMMY BUFFETT JIMMY BUFFETT 11.99 CD 7.99 CASS	PAUL SIMON PAUL SIMON 11.99 CD 7.99 CASS	BREATHE BREATHE 11.99 CD 7.99 CASS	THE ALARM THE ALARM 11.99 CD 7.99 CASS	MARIAH CAREY MARIAH CAREY 11.99 CD 7.99 CASS	MADONNA MADONNA 15.99 CD 9.99 CASS
FRANK SINATRA FRANK SINATRA 58.99 4CD 49.99 4CASS	PRETTY WOMAN PRETTY WOMAN 11.99 CD 7.99 CASS	DAVE BRUBECK QUARTET DAVE BRUBECK QUARTET 11.99 CD 7.99 CASS	IRON MAIDEN IRON MAIDEN 11.99 CD 7.99 CASS	RUBA YAT RUBA YAT 20.99 2CD 14.99 2CASS	ANTHRAX ANTHRAX 11.99 CD 7.99 CASS
THE CHARLATANS U.K. THE CHARLATANS U.K. 11.99 CD 7.99 CASS	TONY TERRY TONY TERRY 11.99 CD 7.99 CASS	POISON POISON 11.99 CD 7.99 CASS	INXS INXS 11.99 CD 7.99 CASS	JON BON JOVI JON BON JOVI 11.99 CD 7.99 CASS	FATHER MC FATHER MC 11.99 CD 7.99 CASS

Who says it has to hurt to work?

Jazzercise

M-W-F 8:30 am-9:30am
KMCAS MAIN GYM (NEW LOCATION)

T-TH 6:00pm-7:00pm
Mokapu Elementary School Cafeteria

LOUISE HUNT
CERTIFIED INSTRUCTOR
239-7342

IN DOUBT? GIVE A TOWER GIFT CERTIFICATE
OPEN 9AM TO MIDNIGHT - 365 DAYS A YEAR

WE'VE GOT THE BEST SELECTION OF CHRISTMAS MUSIC!

TOWER RECORDS VIDEO

HONOLULU
611 & 638 Keeaumoku
Across Kapiolani From Ala Moana Center

AIEA
Pearl Kai Center
Across From Peartridge Shopping Center

MUSIC VIDEOS • VIDEO SALES & RENTALS!

OPEN ON CHRISTMAS DAY!



Photo courtesy of Cathy Wilson

Desert Shield Rappers

Lanika School 5th-graders Nicole Rosolowich (left) and Summer Lawney perform a rap song for fellow students, encouraging them to contribute Christmas gifts to send to Marines deployed to Saudi Arabia.

Family Services

The Family Service Center has the following free programs to help military people improve their lives. For more information, reservations, or to get on the FSC newsletter mailing list, call FSC at 257-3655.

New FSC Phone Number
Please note that Family Service Center has a new phone number, 257-3655. With this new line, we'll be better able to assist you.

Resume Writing
Participants receive resume preparation assistance at this workshop, to be held Jan. 9, 9 - 11 a.m. Call for reservations. This workshop is normally held the first Wednesday of each month.

Children and Separation Anxiety
Child Specialists Kamala

Allen, PhD, and Carolyn Cloutier, MSW, will discuss ways to help children cope with the deployment of parents in a program to be held Jan. 9, 7 - 9 p.m. at the FSC. Call for reservations.

Wlehbusters
Professional Speaker Therese Godfrey will explain how to turn hazy dreams into goals in a dynamic repeat workshop Jan. 16, 7 - 9 p.m. Enrollment is limited, call for reservations.

Ombudsman Training
Three seminars will take place Jan. 8 for Ombudamen, Key Wives and anyone interested in the Ombudsman Program. A "Resources Workshop" will take place 8:15 - 11:30 a.m., a program on "Understanding Family Violence" will be held 12:30

- 2 p.m., and "Crisis Intervention and Suicide prevention" will be the topic from 2:15 - 4 p.m. Participants may attend one, two or all three seminars. Call for reservations.

Playmorning
A free mobile preschool for parents and children (infants to 5 year olds) will be in the following housing locations:
Mondays 2454-2460 Cochran St.
Tuesdays Elrod St. & Cochran St.
Wednesdays Dodson St. & Cochran St.
Thursdays Daly Rd. & Bordelon Ln.
Come to any of these locations from 9-11 a.m. You don't have to live in housing to attend. On stormy days Playmorning meets at the

Family Service Center Lanai. Babysitters are welcome.

Anger Management Workshop

A program designed to help people who have difficulty controlling their anger in interpersonal relationships will take place Jan. 15, 1 - 4 p.m. The workshop will stress understanding and accepting responsibility for aggressive behavior. Call for reservations.

New Arrivals Tour
Join other singles and families new to the Air Station for an orientation and tour of the island Friday from 8 a.m.-4 p.m. Bring a bag lunch. Soda will be provided. Children are welcome. This tour will be offered again Jan. 11, 8 a.m. - 4 p.m. Reservations are required.

Armed Services YMCA

The Armed Services YMCA Outreach Office is located on the Air Station, down the sidewalk from the 7-Day Store. For more information and to make reservations, call 254-4719 or 254-4965.

Women's Awareness Program
Come participate in ongoing social, recreational and educational activities. Child care and transportation are available. Please make reservations.

Massage Therapy
Learn specific methods of stress and pain reduction in a class to take place Jan. 9, 9:30-11:30 a.m. Massage is an effective tool to relieve

stress and pain in the lower back, neck and shoulder area. The fee is \$1. Call to sign-up soon.

Self-Esteem and Assertiveness Training
Overcome feelings of stress and anxiety in dealing with other people at this workshop, taking place Jan. 23, 9:30 - 11:30 a.m. This workshop will explore ways of developing self-esteem, learning what our rights are and gaining mastery over our lives. The fee is \$1. Call for reservations.

Lamaze Classes
Two new Lamaze sessions begin Jan. 3 and Jan. 7, to

continue for six weeks from 6-8 p.m. The class covers all aspects of pregnancy for couples. Reserve your place by signing-up in your sixth month of pregnancy. Our certified instructor was trained by Dr. Lamaze. If you are in need of a Lamaze coach, call ASYMCA. We have volunteers who would love to be your coach.

Kam Swap Meet and Pearlridge Mall
A day of bargain-shopping via the ASYMCA van will be offered Jan. 16. Lunch will be at Pearlridge Mall. The fee is \$1, and space is limited. Call for reservations.

Driver Education for Learner's Permit

Sign-up has begun for a new series of classes starting Jan. 14. These classes will be held four consecutive Mondays 9-11 a.m. A small fee includes the driver's manual and a trip to the licensing bureau for the permit test. Call for more information at 254-4719/4965.

Mexican Cooking
Trish Moya will be preparing three Mexican dishes: Spanish rice, flour tortillas and beef enchiladas. Learn to make these dishes and enjoy them for lunch, on Jan. 23, from 9:30 - 11:30 a.m. The fee is \$3.50.

Ever Think About Learning to Fly...

Come Fly with Us! The Hickam-Wheeler Aero Club

Private Pilot and Instrument Ground Schools begin on January 14, 1991

Cost: \$100 tuition plus \$80 for books

Holiday Gift Idea!

A Gift Certificate from the Hickam-Wheeler Aero Club

Holiday Season Celebration!

New members joining the Aero Club between December 15, 1990 and January 15, 1991 will receive a \$20.00 discount coupon good towards flight time.

Happy Holidays!

Hickam Aero Club, Hangar 13, Ph. 449-1228
Wheeler Aero Club, Bldg. 202, Ph. 656-1091

WINDWARD DUI DEFENSE

BODE A. UALE, Esq.
(Formerly Deputy Public Defender)
FREE CONSULTATION
Low Offices of Joseph P.H. Ahuna, Jr.
KANEHOE HAWAII
235-4000

10% OFF

A Single Purchase Of \$10 Or More!

*Not Combinable With Other Offers

*One Coupon Per Person

Good 12/26/90-12/31/90

THE RUBBER DUCKY

THE RUBBER DUCKY

A Children's Resale Shop

Specializing in high quality, gently-used and gently-washed children's clothes, toys and books. Check us first for new clothes and gifts too!

KOKO MARINA

On the waterfront next to McDonald's

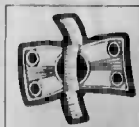
395-6230

M-F 10am-6:10pm
Sat. 9-5 Sun. 10-4



ATTENTION SPONSORS!

12 GOOD REASONS WHY YOU SHOULD SEND YOUR TLA FAMILY TO US FOR TEMPORARY LODGING



SAVE



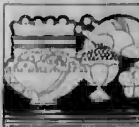
RESERVATIONS ARE SIMPLE



FREE AIRPORT TRANSPORTATION



SATELLITE LIVE SPORTS AND PROGRAMS



FRIENDLY FAMILY RESTAURANT



GUEST LAUNDRY FACILITIES



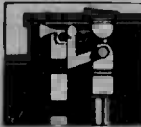
FREE REGULARLY SCHEDULED NEWCOMER ORIENTATION PROGRAM



SWIMMING POOL



FREE PARKING



CONVENIENT LOCATION TO MILITARY INSTALLATIONS

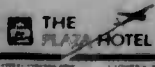


CAR RENTALS AVAILABLE



Certified Merchant

CALL US NOW, TLA APPROVED!



3253 N. Nimitz HWY
836-3636

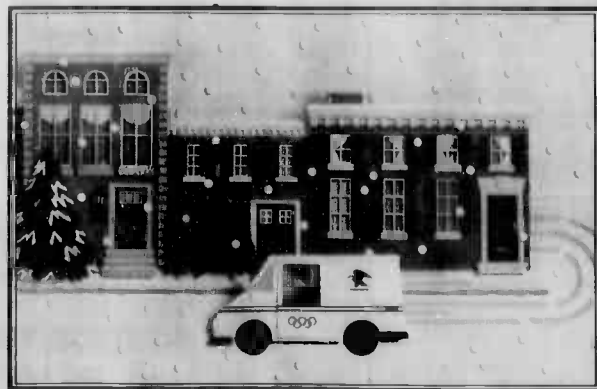


HAWAII



3401 N. Nimitz HWY
836-0861

THE HOLIDAYS ARE JUST AROUND THE CORNER.



FORTUNATELY, SO ARE WE.

You spend a lot of time picking those special holiday gifts. Now make sure they get there on time.

Priority Mail™ gives you two-day delivery between major markets, three days elsewhere. And it's just \$2.40 for up to two pounds, with low prices for up to 70 pounds.

Express Mail™ service from your post office is just \$8.75 for overnight delivery of a half-pound package, \$12.00 for two pounds, and \$15.25 for five pounds. And we'll deliver your overnight packages 365 days a year.

So get your packages to your local post office, and we'll be sure to get them there in time for the holidays.

HAPPY HOLIDAYS FROM YOUR POST OFFICE!



We Deliver.



OFFICIAL OLYMPIC SPONSOR

Push the right buttons.



(Plus area code and number)

Whenever you make an *AT&T Calling Card* or *Collect Call* from public phones on base.

Long distance calling from public phones on base is changing. To ensure that your call will be billed at consistently low AT&T rates, just dial the easy AT&T access code when making *AT&T Calling Card* or collect calls on base. Simply dial 10 + AT&T + 0 before the Area Code and Number you're calling. It's that easy.

Don't give up the quality *AT&T Long Distance Service* you've come to depend on. Push the right buttons, and keep AT&T right at your fingertips.

To order an *AT&T Military Calling Card* or for more information call:

1 800 551-3131 Ext. 6232



MWR Movies

Family Theater
7:15 p.m.
254-2113
Various admission prices

Thursday
No movie

Friday-Saturday
Henry and June (N.C. - 17

No children under 17 will be admitted) Starring Fred Ward, this erotic tale is based on the journals of Anaïs Nin. The film explores the sexual awakening of a young woman torn between author Henry Miller and his exotic and mysterious wife June. The movie takes place during the time frame

in which Miller wrote "Tropic of Cancer."

Wednesday
State of Grace (R) A drama starring Sean Penn. Loosely inspired by the Westies, the notorious Irish gang that once terrorized the Hell's Kitchen block of New York, the film is tale of friendship throughout time and of love and loss.

Sunday, 2 p.m. and 7:15 p.m.
Prancer (G) An animated film.

Monday, Tuesday,

MWR Tickets

The MWR Ticket Office offers tickets and information on how to get them at special military rates. The office also takes reservations for events and attractions around the Island. Call the Entertainment Hotline at 254-3304 or come to building 219, the theater lobby, for information and reservations.

Sea Life Park Special Pass
Sea Life Park is expressing their support and gratitude

to all military families in Hawaii with a special discount coupon that will admit adults for only \$5.75. Also, up to four children under 12 will be admitted free when accompanied by an adult. Coupons are available, and are valid until Dec. 31.

Honolulu Comedy Club
Headliner Ron Robertson, in his third appearance at the club, will be performing through Sunday, the fea-

tured act is Craig Higgins from Los Angeles.

First Night Honolulu
A New Year's Eve celebration of the arts. ITT is selling buttons for \$5 which will admit adults to the full selection of activities and performances for the day and evening. Children will be admitted free. Events will take place at more than 30 downtown Honolulu sites from Blaisdell Exhibition Hall

to Chinatown. Fireworks will explode over Honolulu Harbor at midnight. ITT has a full schedule of events available.

Other New Year's Eve suggestions -The Windjammer Extravaganza Cruise, Flashback New Year's Eve Special and the Hale Koa Hotel celebrations.

The ITT Staff wishes everyone a Merry Christmas and Happy New Year.

Religious Services

Kaneohe Bay
257-3552
Weekdays
11:45 a.m.-Catholic Mass
Saturday
6 p.m.-Catholic Mass
Sunday
7:30 a.m.-Catholic Mass
8:30 a.m.-Protestant Communion
9:30 a.m.-Catholic Mass
11 a.m.-Protestant Mass

Holiday Services and Events
Sunday, 6 p.m.
"Carolling and Cookies"
Monday, 6 p.m.
Children's Mass
Monday, 8 p.m.
Protestant Christmas Eve Worship
Tuesday, 7:30 a.m.
Christmas Mass
Tuesday, 9:30 a.m.

Christmas Mass
Tuesday, 11 a.m.
Protestant Christmas Worship
Dec. 31, 6 p.m.-New Year's Eve Mass
Jan. 1, 7:30 a.m.-New Year's Day Mass
Jan. 1, 9:30 a.m.-New Year's Day Mass
Camp H.M. Smith
477-5098

Sunday
8 a.m.-Catholic Mass
9:30 a.m.-Protestant Worship
9:30 a.m.-Protestant Sunday School
11:30 a.m.-Catholic Mass

Aloha Jewish Chapel
Pearl Harbor
471-0050

Friday
8 p.m.-Shabbat
Saturday
10 a.m.-Shabbat and Torah Study

PRESTIGE TRAVEL UNLIMITED, INC.
1513 YOUNG ST. SUITE #102 • PH. #945-7400
• OPEN 7 DAYS A WEEK • DELIVERY AVAILABLE TO HON. & KAILUA

LOS ANGELES	\$174	DALLAS	\$273	SAN FRANCISCO	\$119	R/T	\$198
SAN DIEGO	\$154	HOUSTON	\$247	SEATTLE	\$189	R/T	\$373
MIAMI/JFK/BOB/DCA	\$324	MINNEAPOLIS/ST. PAUL	\$543	CHICAGO/NEW ORLEANS/DET	\$523		
ALLEN/TOWN/PHL/BUF	\$583	SALT LAKE/DENVER/ABQ	\$453				

CALL FOR OTHER DESTINATIONS
INTER-ISLAND COUPONS
HAWAIIAN AIRLINES & ALOHA AIRLINES
CALL FOR OUR SPECIAL LOW PRICE!

GOLFER'S GAG GIFTS & NOVELTIES
EXPLODING GOLF BALLS
GOOFY GOLF BALLS
GOLFER'S MUGS
FUNNY GOLF BALLS

GAGS
GRAB BAG GIFTS & THINGS
Largest Inventory Risque gifts in Town
Come in early for Best Selection

PARTY CENTER
1210 Dillingham Blvd.
Ph. 848-5433

WHOLESALE carpet remnants
HAWAII'S LARGEST REMNANT SELECTION! over 1000 remnants in stock!
PRICES FROM \$4 to \$15 a sq. yd. NO HIGHER!
WEAR-DATED
NAME BRANDS: STAINMASTER, WORRY-FREE, WEAR-DATED
Berbers, plushes, Textures, sculptures in 100's of colors!
Sizes 12 ft. x 3 ft. to 12 ft. x 35 ft.
Bougainville WHOLESALE CARPET CENTER
4478 MALAII ST. #A2 • HONOLULU, HAWAII 96818 • PHONE 831-2300

LAW OFFICES OF JOSEPH P.H. AHUNA, JR.
CALL IF YOU ARE:
• Injured in an Auto Accident
• Injured at Work
• Suffering from Personal Injury

235-4000
The Castle Professional Center
Suite 101
46-001 Kam IIwy
KANEOHE • HAWAII

Christmas Eve & Christmas Day Buffet Dinner
5:30 PM to 9:15 PM • Parcock Room, 3rd floor
The beautiful Holiday Salad Bar
ROAST PRIME RIB OF BEEF, au jus with Yorkshire Pudding and Creamy Horseradish Sauce
CARVED ROAST TURKEY
SNOW CRAB LEGS with Drawn Butter
ROAST LEG OF LAMB, with Pan Sauce and Mint Jelly
Pasta Primavera • Rice Pilaf • Fluffy White Rice
Scalloped Potatoes • Holiday Bread • Beverage
SANTAS DESSERT & CONFECTIONARY TABLE
\$22.95 • Children 10 and under \$12.95

Christmas Day Buffet Brunch
10:30 AM to 2 PM • Parcock Room, 3rd floor
The beautiful Holiday Salad Bar
ROAST STROLOPIN OF BEEF, with Sage Borelouse and Hollandaise
BAKED VIRGINIA HAM, with Raisin Brandy Sauce
CHINESE HOT ROAST CHICKEN
LAMB CURRY, with Condiments
SEAFOOD THERMIDOR
EGG NEW ORLEANS
CREPES WAFER with Strawberry Glaze
OMELETTES MADE TO ORDER with your choice of Ham, Cheese, Mushrooms, Bacon, Portuguese Sausage and more!
Portuguese Sausage • Coney Bacon • Home Fried Potatoes • Corned Beef Hash • Fluffy White Rice • Holiday Bread • Beverage
THE ROYAL DESSERT TABLE
\$17.95 • Children 10 and under \$9.95

JOHNSON
SALE \$44
Catio Therm Perm
Reg. \$83. Shampoo, haircut and style included. Additional charge for long hair and design wraps.
SALE \$54
Quantum Exothermic Perm Reg. \$98
Long hair slightly higher
SALE ENDS 12/29/90
Windward: 235-4224
NEEDS Manicure & Stylist GREAT BENEFITS
Seniors and SENIOR CITIZENS TAKE 15% OFF ALL SALON SERVICES
OPEN SUNDAYS FOR YOUR CONVENIENCE

Christmas MADE EASY...
• FOR FAVORITE STUFFING RECIPES
• HOLIDAY MEALS

FARMER JOHN BRAND
HOT PORK SAUSAGE
FRESH PORK SAUSAGE
1 LB. ROLL
HOT OR MILD

40¢ OFF
FARMER JOHN FRESH PORK SAUSAGE
1 LB. ROLL
HOT OR MILD

40¢ OFF
FARMER JOHN FRESH PORK SAUSAGE
1 LB. ROLL
HOT OR MILD

40¢ OFF
FARMER JOHN FRESH PORK SAUSAGE
1 LB. ROLL
HOT OR MILD

"My high school cheerleader days are back since I lost 50 lbs. with Nutri/System."
Right before my high school reunion I became so nostalgic I decided to try on my old cheerleading uniform. But I had gained so much weight, it didn't fit. That's what made me decide to go to Nutri/System. They helped me get back to my high school weight, which I had always wanted to maintain. Now, I'm down to my cheerleader size again. I'm even in good enough shape to do my old routines. And that's something to cheer about!
Laura O'Neil
Try the Nutri/System® Crave-Free® Weight Loss Program that includes a variety of delicious meals and "Craving Control" snacks, nutritional and behavioral counseling, light activity, and weight maintenance.

Don't Wait, Call Today.
Our client, Laura O'Neil, lost 50 lbs.

We Succeed Where Diets Fail You!
nutri/system weight loss centers
CHRISTMAS SPECIAL
LOSE ALL THE WEIGHT \$79*
YOU CAN FOR ONLY

LIMITED OFFER

Pearl City	Honolulu	Waipahu	Kailua	Honolulu	Kaneohe
488-1919	388-7548	531-4888	254-8811	829-8822	238-1011
Kahala	Kaunaloa	Lahaina	Kila	Maunaloa	
877-5880	329-0481	681-6872	988-8871	248-4783	

Mon.-Thurs. 9:00-7:00 PM, Fri. 9:00-1:00 PM, Sat. 9:00-3:00 PM

Local Marine tops Corps' journalists

JPAO
A journalist with the Joint Public Affairs Office here was recently selected as the Marine Corps Print Journalist of the Year during the Marine Corps preliminaries for the Dold-wide Thomas Jefferson Awards program.

Cpl. Jason Erickson was selected by Headquarters Marine Corps from a field of journalists from Camp Lejeune, N.C., to Camp Butler, Okinawa. He will now represent the Marine Corps in the Thomas Jefferson Awards judging to be held in January, com-

peting against the selected winners from the Army, Navy, Air Force and Coast Guard for DoD Print Journalist of the Year. Erickson has been a Marine since 1987. After two years at MCCDC, Quantico, Va., he was transferred to Hawaii where he has worked as a staff reporter for the Hawaii Marine since January. His winning stories reflect the on and off duty lives of the people within the Air Station Community.



Cpl. Jason Erickson

On the Blotter

Alcohol-related incidents
• The Military Police responded to report of a disturbance at the Station's Enlisted Club. Club personnel told the MPs that three Marines were fighting, causing one to injure his arm. The injured Marine refused medical treatment. The other two were taken to the Military Police Department. Both were found to be younger than the legal age for drinking alcohol. They were both processed and released to a representative in their command.

Other incidents
• The MPD Lost and Found Custodian reports 30 bicycles, a woman's gold bracelet, a woman's gold wedding band and a Beta VHS in the Lost and Found Locker. If you think any of this property may belong to you, contact Cpl. Chapman at 257-3425.
• A vehicle storage lot is available to all Station personnel taking care of vehicles for personnel deployed to Saudi Arabia, and those who are preparing to deploy. For more information, call Cpl. Jehn at 257-2103.

Seminar offers tips on common cold

"He's had a cold for a few days now," thinks an anxious mother. "I'd like to give him some medicine to help cut down the coughing and sneezing, but I'm not sure what's best and safe, and cold medicines are so expensive!"

For those who've had similar thoughts, the Branch

Medical Clinic is starting a new program of seminars which will teach its participants about the common cold. Also, a "Cold Pac" of medications will be distributed at the seminars.

Specific dates have not yet been set for the seminars. However, the topic for the first will be "Colds and Their

"Treatment." Designed by the clinic's Health Care Providers, the class is about two hours long. It will teach how to distinguish "just a cold" from more serious illnesses.

The class will also provide the opportunity to obtain cold medicines from the Clinic Pharmacy without a doctor's appointment. However, doc-

tors are still available for phone advice and/or appointments to treat colds.

The "Cold Pac" is only available to seminar participants. Those interested should call 257-2131 to enroll. Also, the clinic welcomes recommendations for their health care services, and those interested stop in, or call 257-5017.

Report fraud

Air Station personnel and residents have a new option for dealing with theft, fraud, waste or abuse they witness here. They are asked to make

a confidential call to Naval Investigative Services at 257-5698 to become part of the solution.

Hawaii Marine Ads

PETS

Rabbits: Dwarf Christmas bunnies, 6-weeks-old, litter-box trained. \$15. Call 254-5229.

Dog: Tan terrier. Good with children, 9-months old. Free to good home. Call 254-3807.

Kittens: 6-weeks-old, manx-like tails. Free. 254-5229.

It's hard to learn anything on Monday when you didn't eat anything on Sunday

Last year we fed millions of hungry people in the United States. You can help us. We're The Salvation Army.



God cares... and so do we!

ANNOUNCING THE NEW NCOA SERVICE CENTER IN KAILUA

...Your doorway to NCOA-endorsed programs and services, including the association's newest member benefit to residents of Hawaii: automobile insurance.

To find out about the many benefits of NCOA membership, visit us today at

PALI PALMS PLAZA
970 NORTH KALAHEO AVE.
SUITE A109

(DIRECTLY ACROSS FROM NAVY FEDERAL CREDIT UNION)

KAILUA, HI 96734
TEL. (808) 254-5802



PALI PALMS DENTAL CENTER DENTAL SERVICES

General Dentistry • Preventative and Restorative Dentistry
Cosmetic and Esthetic Procedures

INSURANCE ACCEPTED: HDS, HNSA, Delta Dental Services (Military), Hawaii Dental Health Plan

Dr. Alan M. Yugawa, DMD
Office: 254-6477
970 N. Kalaheo Ave., A-108
Kailua, Hawaii 96734

Dr. Derek Ichimura, DMD
Office: 254-6694
970 N. Kalaheo Ave., A-108
Kailua, Hawaii 96734

BUY 2 GET 1 FREE
(of equal or lesser value)

**FREE GARMENTS
FREE GIFTS • FREE CANDLES**

GREAT GIFT IDEAS FOR OVERSEAS MAILING!

- HAWAIIAN APPAREL • SOUVENIRS
- CANDLE

FACTORY SALES
46-178 Kahuluihna Street / HAWAHOE
(Across Windward Dodge)

OPEN MONDAY-SATURDAY 10:00 a.m.-4:00 p.m.

247-4402
COME IN AND BROWSE AROUND

If you haven't had a mammogram, you need more than your breasts examined.

Find the time. Have a mammogram.

AMERICAN CANCER SOCIETY

Give yourself the chance of a lifetime.

The Godfather PART III

A PARAMOUNT PICTURE

STARTS TUESDAY, DECEMBER 23, 1990!
WAIKIKI #3 & KAM DRIVE-IN

Please Consult Directory For Showtimes/Sorry, No Passes!
200 Main Street at West Waikiki

THE CLASSIFIED INDEX

Telephone Service 238-5858
Counter Service 485-525 Luluku
Mon.-Fri. 8 a.m.-5 p.m. Kaneohe
Mon.-Fri. 8 a.m.-5 p.m.

Deadlines:
Line Ads due by 12 Noon - Tuesday
Class Display Ads due by 4:00 p.m. Friday
CANCELLATIONS & CORRECTIONS due by 12 Noon-Mon.

CLASSIFIED

HEADING	CLASS	HEADING	CLASS
Announcements	15	Houses Unfurnished	82
Antiques-Art	130	Income Property	113
Auto Furnished	73	Houses	83
Auto, Partly	74	Part Furnished	83
Furnished	75	Income Tax	30
Auto, Unfurnished	74	Jobs Wanted	69
Auto	172	Legal Notices	14
Announcements	173	Livestock & Horses	150
Auto Leasing	181	Lost & Found	20
Automobiles	172	Office Equipment	153
For Sale	178	Miscellaneous	126
Auto Service/Parts	156	Property	127
Auto Wanted	181	Investment	55
Aviation	3	Opportunities	55
Bicycle Sales & Service	131	Moped & Scooters	171
Beats, Supplies & Service	146	Moving & Storage	123
Business	50	Music Instruments	144
Opportunities	50	Personals	25
Prof. Services	37	Pets Everything	151
Cleaning	37	Photography	140
Card of Thanks	8	Pickups, Trucks	186
Cemetary Plots	10	Real Estate	112
Condos	86	Management	112
Townhouses/Furn	86	Real Estate	112
Condos/Townhouses	109	Announcements	118
For Sale	109	Real Estate for Sale	118
Condos/Townhouses	109	Real Estate Loans	118
Part Part	109	Real Estate for Trade	117
Condos/Townhouses	109	Real Estate Wanted	118
Unfurnished	87	Rentals to Share	76
Computers	132	Rentals Wanted	76
Domestic	132	Restaurants, Bars	118
Help Wanted	82	Rooms for Rent	86
Domestic	82	Rooms & Instructn	86
Jobs Wanted	64	Short Term Rentals	84
Employment	64	Sporting Goods	147
Opportunities	59	Stereo, Video & Television	178
Free Bee	0	Stores & Offices	103
Garage/Land	124	for Rent	103
1 Sale Moving	124	Swaps & Exchanges	120
Health & Fitness	4	Travel	122
Magic Machinery	174	Vacation Rentals	93
Equipment	174	Vans, Campers, Jeeps, AWD	175
Jobs Wanted	64	Water Sports	140
Male/Female	60	Wigs	140
Home Appliances	125	Wigs	140
Home Furnishings	120	Wigs	140
Houses Furnished	81	Wigs	140
Houses Unfurnished	81	Wigs	140
Housekeeping	84	Wigs	140

0 Free Bees

4 Health & Fitness
I CAN help you! Mentally & Physically Ph. 948-3418 (Rec. Msg.)

20 Lost & Found
3300 REWARD had pin. Great sentimental value. Lost Oct. 6th. 282-8119

25 Personals
ALONE? Check out Mid Pacific Connection. Free recorded msg. 281-744.
DID NATURE MAKE A "MISTAKE"? Have you ever felt like a boy in a girl's body or a girl in a boy's body? Do you know your "Next Step"?
TALMA'S Sensational "Karmic" Life Reading pin points the "Gassy Over" CAUSES of your present life challenges, opportunities & Special Talents. Find out your life "MISSION" & understand your Life "Lessons" & Karmic "Taste" at last. Your deepest questions are answered & your "Next Step" is shown. Be ready for some nice Surprises. For more info, ring Talma in Lanika! 282-9905, "noon to midnight."

10 Cemetary Plots
HAWAII Memorial Park, 3 double plots \$2800 each. Call 623-3695.

15 Announcements
Aloha Pawn
(Buy, Sell, Loan, Trade)
Come see us for best deals in Waihiwa
Ph. 622-2898
540 California Ave.

FREE
Mini-Psychic Phone Reading 7-10 pm ONLY
Prof. services avail
944-8063

SHORT ON CASH? EASY MONEY PAWN
CALL 839-2005
3180A KOAIIKA ST.
Behind Airport Plaza Hotel

FREE
Mini-Psychic Phone Reading 7-10 pm ONLY
Prof. services avail
944-8063

DONATE PLASMA FOR \$100/Mo. CASH
3179 KOAIIKA STREET
LASMA DONOR CENTER OF HAWAII
836-0647
For More Information

WRITE A CLASSIFIED AD ... IT WORKS!

Sun Press	MidWeek	COMBO
1 wk \$2.27 per line	1 wk \$3.90 per line	1 wk \$4.94 per line
2-4 wks .. \$2.16 per line (per week)	2-4 wks .. \$3.70 per line (per week)	2-4 wks .. \$4.69 per line (per week)
5-8 wks .. \$2.05 per line (per week)	5-8 .. \$3.52 per line (per week)	5-8 wk .. \$4.45 per line (per week)
9 wks ... \$1.94 per line	9 wks+ ... \$3.34 per line	9 wks+ ... \$4.23 per line

ASK ABOUT OUR 3 WEEKS FOR 2 SPECIAL

Name _____
Address _____
Home Ph: _____ Bus. Ph: _____
 VISA MasterCard No. _____ Exp _____

PLACE YOUR AD HERE
Allow for each letter, punctuation or space. Please do not abbreviate. Please run this ad in your next issue of Sun Press Newspapers

MINIMUM 3 LINES PER AD

FIRST LINE			
2			
3			
4			
5			
6			
7			

No. of Lines _____ x Cost per line _____ x No. of weeks _____ = **TOTAL COST**
Payment must accompany your ads

Sun Press MidWeek 235-5656

INDEX

Classified Advertising Department 235-5656

FREE CO-DEPENDENT SUPPORT GROUP
Wines Chapel Church, 7pm Thurs. Child care, no charge 823-8438

Go 'Sale-ing'.. In Classified!

TEACHERS CARE GIVERS AIDES

Sunrise Preschools is looking for quality professionals to work in clean new facilities. Opportunity for advancement. 50% to 100% **CHILD CARE DISCOUNT**. F/T & P/T

Pearl City 488-9377
Kailua 232-2331

SECOND ASSISTANT MANAGER & PART TIME SALES

One of the largest & most exciting specialty retailers is seeking qualified individuals, with excellent customer service skills. We offer an excellent benefits package, including medical, dental, vision care, profit sharing, Liberal employee discounts.

Apply in person or call
FREDERICK'S OF HOLLYWOOD
Windward Mall
46-056 Kam. Highway
Kaneohe HI, 96744
808-235-0051
Equal Opportunity Employer

ONE-HOUR PHOTO

Trainee
Need extra income? Learn a new skill? We are seeking eager, reliable candidates to work with customers in processing film for mini-lab. Join the nations largest photo finishing team. Positions available.....for:

Kaneohe Marine Exch. Weekends, Early Evenings.
Walkiki Up to 11pm. Weekends, Holidays.
Qualix Inc./Kodak Processing Services
Contact Human Resources.
531-6565 or apply 1065 Kapiolani Blvd. AEEO

A chance To Travel:
Pacific Basin/Mid-East
Far-East/US Mainland
—International—
American Overseas has been assisting Ex-Military/Civilian Engineers & Senior Technicians for 15 years in obtaining overseas positions. Continuous — Critical Needs: Sophisticated Electronics—Data—Construction—Engineering—Maintenance—Installation/Logistics/Power—Water—Sanitation/Petrochem/Air-Conditioning/Nuclear/Medical/Security/Instruments—All fields including TEFL-TEST/Vo. Ed./Weapon Systems. Most all skills used in Military/Commercial endeavors. 6+ yrs. experience preferred. TS + Clearance Critical.
NO ADVANCE FEES—Resumes to:
AMERICAN OVERSEAS (AOEA)
1400 Kapiolani Blvd. #C-29 Honolulu, Hawaii 96814

AIRCRAFT CLEANERS BAGGAGE HANDLERS

Career opportunities for the aviation field, excellent benefits. We have full-time and part-time positions in the mornings, starting from 5:30 am. Our evening has only part-time positions, starting from 9:00 pm.

All jobs require that you be 18 years or older.
Calls being received Monday through Friday, at 831-6041.

OGDEN Aviation Services
An equal opportunity employer

SAVERS

PRODUCTION MAINTENANCE POSITION AVAILABLE

Monday - Friday, 8am - 4:30pm
\$6 per hour to start. Heavy lifting involved. Excellent benefits. Please apply in person.

SAVERS
Aikai Park Shopping Center
25 Kaneohe Bay Drive - Kailua
Equal Opportunity Employer

CITY MILL
HAWAII'S LARGEST AND MOST COMPLETE
HO.EMP. I/O. VENDOR CENTER
SERVING HAWAII SINCE 1947

A GREAT PLACE TO WORK!
If you know how to smile, enjoy working as a member of a successful team, and are willing to learn... then we have a job for you.

IMMEDIATE OPENINGS
CASHIERS
SALES CLERKS

- Full and Part Time Positions Available
- No Experience Necessary--Willing to Train
- Flexible Work Schedules

PLUS... City Mill offers an excellent benefit package!
• Medical & Dental Insurance • Life Insurance
• Paid Vacation & Sick Leave • Employee Discounts
• Eleven Paid Holidays • Pension Plans
• Uniforms Provided • Outstanding Profit Sharing

Apply in person at any of our 5 locations

(Benefits vary depending on classification)
(Ask for the Manager on Duty)

• HONOLULU • KANE OHE • WAI PAHU • WAI MALU • KAI MUKI
533-3811 247-2181 671-1746 487-3636 735-7636
660 N. NIMITZ HWY. 45-209 KAHUHIPIA ST. 94-157 LEOLEO ST. 95-1277 KAAHU MANU 3085 WAI ALAE AVE.
AN EQUAL OPPORTUNITY EMPLOYER

THE QUEEN'S MEDICAL CENTER

HAWAII'S HEALTH CARE LEADER

REGISTERED NURSES

FULL TIME, PART TIME, CALL-IN

- CARDIOVASCULAR ICU
- TRAUMA/SURGICAL ICU
- MEDICAL ICU
- M/S ICU
- NEURO/TRAUMA ICU
- CARDIAC TELEMETRY
- PACU
- IV THERAPY
- PEDIATRIC
- OPERATING ROOM
- NURSERY POST PARTUM
- OUTPATIENT ONCOLOGY/CHEMO
- ONCOLOGY
- GASTROINTESTINAL SERVICES
- ORTHOPEDEIC
- PSYCHIATRY

MANAGEMENT

PATIENT CARE COORDINATOR
•Trauma/Surgical ICU
•Post Anesthesia Care Unit

ASSISTANT PATIENT CARE COORDINATOR
•Thoracic Cardiovascular ICU
•Medical ICU/Acute Hemo Unit

CLINICAL NURSE SPECIALIST

- Pain Management
- Biological Response Modifier
- Maternal Child Care
- ICU - Nursing Education
- HIV Programming and Care

Requires MSN and previous experience in related area. Responsible for program, development, clinical research, quality assurance participation and staff education.

NEW GRADUATE RNS

Increased salaries, individualized preceptorship program, opportunities to work with the latest technology and the top health care professionals. Choose from a wide range of specialty areas and unlimited advancement through our Clinical Ladder program.

APPLY IN PERSON OR CALL 547-4622
NURSE RECRUITMENT OFFICE
1301 PUNCHBOWL ST.
MON.-FRI. 8 AM-4 PM

CLIP AND SAVE

ONE WEEK FREE!

Classified Advertising Offer
Buy Two Weeks & Get The Third Week **FREE**

ENJOY THE MANY SPECIAL

HOLIDAYS AND EVENTS COMING

OUR WAY AT THIS

TIME OF YEAR

BUT PLEASE REMEMBER

TO BE CAREFUL WHEN CELEBRATING.

PLEASE DON'T DRINK AND DRIVE. WE WANT YOU TO HAVE A SAFE AND ENJOYABLE

HOLIDAY SEASON.

Sun Press Newspaper

The Classified Advertising Department of Sun Press wish you

GLAD TIDINGS

of the SEASON

The Sun Press & MidWeek Classified Department will close December 25th for Christmas.

DEADLINE to place a classified ad for the December 27, Sun Press & January 2, MidWeek will be Monday, December 24, at 10am

Sun Press 235-5656

We will be open at 8am on Wednesday, December 26, 1990.

CLASSIFIED CLASSIFIED CLASSIFIED

25 Personals

ELVIS FAN CLUB
P.O. Box 15120
Hon, HI. 96815 947-8903

FREE Personality Test..
Your personality determines your happiness. Know why? Call Dianetic hotline 1-800-367-8788.

IF you want to drink that's your business. If you want to stop, that's ours. Call 946-1438. Alcoholics Anonymous.

MARRIAGES performed anytime, anyplace. Beaches, gardens etc., non-denominational minister. Videography & photography avail. Very reas. rates. 259-5429.

MOM'S CORDIAL WINE receipts. Send \$2 SASE to 1831 E. Leiuhua Ln. Honolulu, HI 96813.

PERMANENT Weight Loss Certified Hypnotherapist. Call 261-4595.

QUIT Smoking! Results guaranteed. Certified Hypnotherapist 261-4595.

SANTA CLAUS for your Christmas party, 9 yrs. exp. Call Santa 955-2106.

30 Income Tax

LATE TAXES, past yrs. in your home, svc. Steve White MBA, 395-7141.

50 Business Opportunities

FLEA MARKETERS
Free wholesale price list. Call 833-3090

58 Schools & Instruction

FORMER MODEL/INSTRUCTOR of a leading modeling school wishes to teach your pre-teen/teenager self improvement modeling classes. 30 hrs. of training \$375. Call for apprt. 423-0798.

LANGUAGE MASTERS
English Pronunciation Made Easy
Get out of the pigeon hole & into greater productivity with clear understandable English in weeks.
Language Masters. unique, easy, & a fun way to learn English pronunciation!
For Registration Info: Call Todd Camenson 737-9398
Language Masters

PIANO Instruction
Julliard M. Music. 538-9985.

PIANO LESSONS
Kaneohe area only 235-4432 or 841-1196.

58 Schools & Instruction

PIANO Lessons, ex-elementary teacher BA in music seeks interested students phone 396-6137.

PIANO lessons for all ages in your home. Call 523-1985.

SEWING made fun 'n easy. Lessons start now. Kailua 262-6387, 262-4455

SMALL group classes for high school test (GED) & TOEFL test. 536-3030.

ACCOUNTING/SALES AUDITOR
Full & part time positions available. If you are good with numbers & attention to details, you will love this job. We provide on the job training. Flexible work schedule with excellent wages and benefits. Call Personnel Dept. at: 682-5767.

AIRPORT
Andy Frain Services is now hiring passenger screeners for the Honolulu International Airport. Will train. Applicants must be dependable, mature, 18 or older, high school diploma or GED is req. Days & graveyard avail. F/T, P/T. work. Drug free environment. Ideal for homemakers, students, retirees & 2nd jobs. Starting salary \$4.25 per hr. + benefits & incentives. 839-8046.

60 Help Wanted Male/Female

\$40,000/YR READ BOOKS & TV Scripts. Fill out simple "like/don't like" form. EASY! Fun, relaxing at home, beach, vacations. Guaranteed paycheck. FREE 24 Hour Recording. 801-379-2955 Ext. HE103B.

AMERICAN CANCER SOCIETY
Program Director
Plan/Coordinate program working w/ volunteers & community leaders. Prefer voluntary agency experience. Excellent interpersonal/communication experience skills. B.A. or equivalent experience. Must have own car. P/T position at Windward. Unit hiring range: \$9,000-\$12,000/yr. Submit resume by 1/7/91

American Cancer Society
629-A Kailua Rd. Rm 110
Kailua HI, 96734.

60 Help Wanted Male/Female

WORD PROCESSING SECRETARIAL CLERICAL MARKETING DATA ENTRY LITE INDUSTRIAL

Western TEMPORARY SERVICES.
NEVER A FEE!
900 FORT ST. #920
524-0411
AIEA
487-6669
EDE/MI/TH/V

DEVELOPMENT DIRECTOR
For national health agency. A challenging position for highly self motivated, energetic & creative individual, w/ well developed media, PR & business contacts. Responsibilities include: Fund Raising, Special Events & Volunteer Recruitment, Planning, coordination & managing budget. Min. 2 yrs. exper. required. BA or equivalent exper. Excel salary & benefits package. Position avail. Jan 2, 1991. Resume w/ cover letter to:

Executive Director
Arthritis Foundation
45-1144 Kam Hwy. #500
Kaneohe HI. 96744

LAKEERS CLEANERS

PRESSERS
Full-time, Days w/ exper. Part-time, Nights.

SPOTTER
Salary commensurate w/ exper. Full-time.

DRAPERY PERSON
Clean & Press draperies. Will train.

Positions for Kaneohe

Theresa
235-2533

60 Help Wanted Male/Female

AVON IS GROWING!
Earn up to 50%. Call Asst. Manager Kathryn 423-0693.

ATTENTION 100 people
we'll pay you to lose up to 29 lbs. in 30 days. 1-800-829-3472.

ACCTG. CLERK, Kailua. part time, M-F. Apply in person or call Somewhere Else 263-8833.

FREE Computer Classes

SELECT TEMPORARY SERVICES offers you free state certified computer training through Computer Training Institute. Come in now & we will show you how to upgrade your skills. Choose the job you would like!

Switchboard Opers.
General Ofc. Clerks
Word Processors
Data Entry Clerks
Bookkeepers
Legal/Exec. Sectys.

We offer great benefits: top pay, health insurance, parking subsidies, paid holidays, free computer training & much more! Come in now to one of our conveniently located offices.

SELECT TEMPORARY SERVICES INC.
528-5055 483-0055
Downtown Aiea
EDE/NO FEE

60 Help Wanted Male/Female

SECRETARIAL CLERICAL MARKETING DATA ENTRY LITE INDUSTRIAL

Western TEMPORARY SERVICES.
NEVER A FEE!
900 FORT ST. #920
524-0411
AIEA
487-6669
EDE/MI/TH/V

DEVELOPMENT DIRECTOR
For national health agency. A challenging position for highly self motivated, energetic & creative individual, w/ well developed media, PR & business contacts. Responsibilities include: Fund Raising, Special Events & Volunteer Recruitment, Planning, coordination & managing budget. Min. 2 yrs. exper. required. BA or equivalent exper. Excel salary & benefits package. Position avail. Jan 2, 1991. Resume w/ cover letter to:

Executive Director
Arthritis Foundation
45-1144 Kam Hwy. #500
Kaneohe HI. 96744

\$7 FULL TIME

\$6.50 MORNINGS

\$6 PART TIME

INVENTORY SPECIALISTS
NO EXPERIENCE NECESSARY
DRIVERS LICENSE AND PHONE REQUIRED

APPLY IN PERSON 10AM-6PM M-F

WASHINGTON INVENTORY SERVICE
905 UMI ST. #104 KALIHI
842-7177
765 KAM HWY #104 PEARL CITY
455-6563

CLERICAL POSITIONS

CALL TODAY
WORK TOMORROW...

Temporary Assignments at prestigious firms. Flexible length to permanent. Bonuses. Benefits. Upgrade your skills with FREE training.

Typists	TOP PAY!
Receptionists	To \$300/wk
Data Entry	To \$320/wk
Acct'g Clerks	To \$380/wk
Secretaries	To \$450/wk
Word Processors	To \$450/wk

NO FEE TO YOU!

Call Donya at
531-0154
Pacific Logistics

BASKIN ROBBINS

CAKE DECORATORS
Full/Part Time, experience desired.

COUNTER SALES
Full/Part Time, training provided.

JOIN THE KAILUA BASKIN-ROBBINS TEAM.
576 KAILUA ROAD, KAILUA
Ask for Joyce 261-2770
Equal Opportunity Employer

PROFESSIONAL SERVICES

Sun Press Classified

Carpentry
A-SUNSHINE Maint. Co. Gen. Carpentry, redwood fences & decks. Quality work, at reas. prices. To \$100. Call Steve 262-0713.
AAA Quality remodeling, additions, lanais, tile, dry wall, painting, rough to finish guar. work. To \$100. 235-0347/263-8545.
EXPERT Home repairs. Carpentry, electric, plumbing & much more. To \$100. Call Steve 293-2477.
ISLANDWIDE Custom home repair since 1983. Carpentry, elect. & plumbing. No job to small. Free est. up to \$100. 949-6508.
PROFESSIONAL and experienced carpentry, remodeling-renovation. Home Repairs, to \$100. Call Michael 262-1890
TERMITE, water & Dry Rot repair specialists. Free est. to \$100. Call Mark C M & P Co. 226-9170/955-3499.

Carpets
Z-1 CARPET CLEEN Residential/Commercial. Upholstery Specialists. \$14.95 Rm. Ph. 283-0300.
It's easy to charge it. Visa/MasterCard pays for Sun Press Classified. 235-5656.

Cleaning
"CLEAN WINDOWS" Prof. Svc. since 1968. Call Ron Albert 522-0193.
B & M Professional Cleaners. Homes, offices, move-outs, commercial, etc. Reasonable, reliable, ref. "We don't just clean, WE CLEAN!!" 395-2024.
BROOM Service Special 10% off thru 1/12. Res./comm., incl. carpets & windows. Refs. 623-4875.
CLEANING SERVICE Specializing in rental checkout, sm. business, incl. windows & carpets. Free est. Call 488-3077.
HOME CLEANING: Holiday weekly, monthly, yearly. Move-outs. Call Linda 262-3836.
HOUSEPROUD Cleaning, Res./Comm. reas. Guaranteed. 623-8185
SPARKLE Fresh Cleaning Kailua & Kaneohe only. Call 239-4918.
THE Window Cleaner! Free Est., reasonable rates. Ph. 262-2181.

Contracting & Construction
D & M CONTRACTING INC. Gen. contractor, planning & design svc., new homes additions, remodeling, all construction phases. Free est. Lic. #14233 & insured. Call 239-4546.

Contracting & Construction
LIC. Gen. Contractor for both Commercial & Residential. Call Mike 261-4430. BC-16017
PACIFIC ISLE Contractors. Specialist in Kitchen & Bath remodeling/addition. C11114206. Ph. 623-4717.
ELECTRICAL
CEILING Fan Installation. Free estimate. Call 395-0395, # C6052.
QUALITY work. Ceiling fans, fixtures, add'l tele. lines installed. 637-9862.

Handyman
JL Handyman Svc. Home repairs & renovation, termite, water rot damage, carpentry, plumbing, elect., ceramic tile, drywall painting. To \$100. Call 236-0052
LIGHT Painting, plumbing, electrical, carpentry. Call Bill 946-9358.
LOW COST quality home repair. Carpentry, painting, elect., plumbing, flooring, odd jobs. To \$100. Chris 235-0399.
It's easy to charge it. Visa/MasterCard pays for Sun Press Classified. 235-5656.

Kwon's Engraving & Trophies
Formerly located at Hickam AFB, Schofield Barracks
Announces the opening of their **NEW LOCATION IN AIEA**
99-185 Moanalua Rd.
486-8585
Same Low Prices & Quality Service
1 DAY SERVICE AVAILABLE

Masonry
ALL phases masonry, brick, stone, concrete work. No job too big. Free est., 15 yrs. exp. Dave 263-2136. To \$100.
CERAMIC Tile, 30 yrs. exp. We tile anything. New/remodel. To \$100. Bill 531-0230, 261-8462.

Painting
AAA Quality painting. Residential, commercial guar. workable. To \$100. 235-0347/262-8545.
ISLAND Budget Painters. Call now for Xmas savings. Quality work. Ins./Refs., To \$100. 239-5058.
LEE'S Painting. 20 years business experience. Lic. #C3858. Call 247-1454.
LOOKING for a Professional Painting Company with affordable prices? Call JAL Services at 396-4221 or 263-8370. We're licensed, insured & give free estimates. Call & check us out #C13054
PAINTING by Jorge, 7 yrs. experience. Fast quality work, reasonable rates. Call for free est. at 263-6135. To \$100.
PAINTING. Father & Son. Nice work. Free est. To \$100. Ph. 455-8971.

Plumbing
KANE OHE Plumbing, Repairs & remodeling. Lic. C9153. 239-9262. Free Est.
PLUMBING home repair, drain cleaning, Call Miracle Maintenance for free est. 486-5645 tele-pager. 526-8568. Up to \$100.
PROFESSIONAL Services
MILDEW? Tired of it? Let us remove it for you. From walls, eaves, sidewalks or pool areas. Call the professionals for a free estimate. JAL Services, #C13054. 396-4221 or 263-8370.
Remodeling
PATIO & new additions, repair, remodel. Clifford Iwane. #C-4467. 677-4695.
REMODELING. Additions, wood decks. #BC12339. John 247-2287.
Repair
A CARREIRA Home repairs & painting. One call we do it all. Free est. Call 239-4857. To \$100
CANE chair repair, also rush weave. Professional quality work guaranteed. Call 734-6492.

Repair
GERALD'S Home Repair. Jalousie windows, screens, painting, garbage disposals. Free est. To \$100. 536-8907.
Roofing
A ROOF well maintained will save you money & last longer. Free est. To \$100. Call 261-0496 Ernie
Sewing & Alterations
PROFESSIONAL sewing/alter, for all occasions. Free p/u & del. 239-5601.
SEW Unique. Custom sewing, clothing, drapes, alterations. Ph. 423-2899.
Yard Service
DISTINCT yard, rock, sprinklers. Call 263-7777.
LAWN & Garden reasonable & reliable. Experienced. 623-0830.
PROFESSIONAL Garden services, all phases. Islandwide. 262-6118.
REMI'S Yard Service. Mowing, weeding, trimming. Residential & Commercial. Call 261-5050.
TREE Svc. Lrg. removal to ornamental trimming. 12 yrs. exp. #C14433. Free est. All Paradise Tree Svc. 695-8228.

Press Room Trainees
Start at \$6.60 per hour
Full Benefits
Generous Profit Sharing Plan

Immediate openings for persons willing to work hard with a desire to learn a highly skilled profession.

Apply in person at:
Sun Press/MidWeek
45-525 Luluuku Road
Kaneohe, HI 96744

DIETARY AIDE I

Full-time and part-time rotating shifts available. Experience in dietary area helpful.

DIETARY AIDE II

Full-time and part-time rotating shifts available. Some kitchen experience desired.

APPLY IN PERSON

Seven Days a Week
8:30 a.m.-7:30 p.m.
HALE NANI HEALTH CENTER
1677 Pensacola Street
An Affirmative Action/Equal Opportunity Employer

Pizza Hut DELIVERY A WHOLE WORLD OF OPPORTUNITY UNDER ONE ROOF Now Hiring SHIFT MANAGERS Entry Level Management Job Flexible Hours Full-time/Part-time Advancement Opportunities DELIVERY DRIVERS Drivers Pay Up to \$10/hour Flexible Hours Part-time Apply at Kailua Delco Kailua Shopping Center 572 Kailua Road An AA/EEO Employer

Alpha Health Care Center 247-6661 IF YOU: Don't like hard work that satisfies Don't like older people Don't want to be needed Please Don't Call Us! But... If This Picture Appeals To You... Apply in Person At Aloha Health Care Center 45-545 Kam Hwy. Kaneohe Hi. An EEOC Employer

ANN PEARL INTERMEDIATE CARE FACILITY EMPLOYMENT OPPORTUNITIES EXCELLENT STARTING BENEFITS ANN PEARL is a family owned and operated Intermediate Care Facility committed to providing quality health care services to the people of the Windward side since 1950. RN & LPN, NURSE ASSISTANT HOUSEKEEPING P/T, DAY/EVES. No Long Term Care Experience Needed New Graduates Welcome BENEFITS: Medical plan including Dental, Drug & Vision Excellent Starting Pay Flexible Schedules Full & Part Time Positions Employer Paid Pension Plans Regular Wage Increases Paid Inservice Training FREE CPR Training & Certification Supportive Administration Participative Management FREE PARKING NO TRAFFIC HASSLES Paid Vacation & Sick Leave 45-181 Waialua Road Kaneohe, Hawaii 96744 247-8558

Alpha Health Care Center 247-6661 The Spirit of Aloha Resides at 45-545 Kam Highway! Nurses Nursing Assistants Care Givers COME SEE FOR YOURSELF! Apply in person Aloha Health Care Center 45-545 Kam Hwy. Kaneohe, HI 96744 An EEOC Employer

60 Help Wanted Male/Female AVONI CASH For XMAS. 50% earnings possible. Free kit. Jo 395-6970. AVONI Own business. Be your own boss! Cash gifts. Kandy 235-7641. ASST. TEACHER, Teacher Asst., F/T, P/T, Ed. exp. 537-9351 9-3pm. BE your own boss. Lucrative Income potential. No exp. necessary. We train. Call 235-8661. DELIVERY Personnel, F/T & P/T, earn \$6 to \$12 per hr. Mopeds are acceptable. Domino's Pizza Inc. Call before 4pm or after 8pm or apply in person: 1901 Kapioianoi... 944-3030 3298 Campbell... 737-0888 7192 Kailaniannaole Hwy. 396-3030 4224 Waialae... 735-3655 2334 S.King... 955-8847 1813 Nuuanu... 526-3030 1330 Middle... 845-9991 CATHOLIC Services to the Elderly. SOCIAL SERVICE ASSISTANT. Full time contract position with home & community base services for the elderly program on the North Shore, Wahiawa areas. Provides case management, para-professionals counseling, advocacy & other direct services to the elderly. Bachelors in Social Work or Human Service preferred. Will consider Associate Degree with 1 year exp. bilingual capabilities preferred but not required. Valid Hawaii state drivers license & access to car for work are required. Excellent benefits. Deadline for applications Jan. 3, 1991. Apply at 250 So. Vineyard St. Come by and talk with us. We are located inside Gibson's Store in Mapunapuna below Tripler Hospital or call Lynn. 2850 PUKOLOA STREET 836-7760 SPECIAL FOODS DIVISION An Equal Opportunity Employer

60 Help Wanted Male/Female COUNTER HELP Part time days-nights-weekends. Can work into full time. Call 9 to 4 Mon.-Fri. 599-2582 Dairy Queen Military Welcome. Want more than just a job in Fast Food? GRANNY'S GOURMET MUFFINS & DELI We make and serve fresh daily, muffins, sandwiches, soups and salads. Because we are good, help is needed for part-time and full-time positions. Great flex-time schedule between 5 a.m. to 8 p.m. Pay Increases and promotions are possible based on good performance. Come by and talk with us. We are located inside Gibson's Store in Mapunapuna below Tripler Hospital or call Lynn. 2850 PUKOLOA STREET 836-7760 SPECIAL FOODS DIVISION An Equal Opportunity Employer. 60 Help Wanted Male/Female EARN \$300 to \$500 per week Reading Books at home. Call 1-615-473-7440 Ext. B514. EARN \$100 for every book you read at home. 24 hr. recording reveals details. 1-801-756-9995. Dept. HI-2. EARN MORE Money in 1 month than most people make in 1 year. Let me show you how! 24 Hr. recorded msg. 948-0853. EXPERIENCED PAINTER wanted. Start immediately, own trans. Call 235-5980. HOMEWORKERS. Earn up to \$1470 per month. Amazing brief recorded message reveals details. Call 236-1112 Ext. H1. HOUSEKEEPERS. Waitresses/Waiters, Diet Aides, Nursing Assistants, Maint., P/T days, P/T nites. For info, call angle at 247-8211, M-F, 9-3pm. Pohai Nani, Kaneohe. INTELLIGENCE JOBS. FED, CIA, US Customs, DEA, etc. Now Hiring. Listings. (1)805-687-8000 Ext. K-4031. JAPANESE language teacher. After school program. Kaneohe area. 239-8833 or 521-6290. F/T or P/T Cashier, immmed. opening. Kailua Texaco. Call 262-4211. LANDSCAPE Maintenance helper. Windward side. 254-4806.

60 Help Wanted Male/Female KODALUX PROCESSING SVC. PRODUCTION WORK Immediate openings for graveyard shift + weekends, overtime for holiday season. Requires good work habits, hand/eye coordination. Apply at 1085 Kapioianoi Blvd., Honolulu. 531-6565 AED. LOOKING FOR FRIENDLY, supportive, team work environment. On the job training. Phone & car required. Sincere applicants only please. 486-4822. MAKE money watching TV! Exciting new method. Recorded message reveals details. 293-2276. MEDICAL Receptionist, & Asst. for busy 2 doctor office. Call 622-4191. MGR. Ass't. Mgr. Womens/childs wear F/T, flex hrs. 537-5911 ext. 54. ORSON'S BOURBON HOUSE will be hiring a saute cook, pantry cook, a bar back & a dishwasher to join our prospering team. If seriously interested apply in person, from 2pm-4pm see Richard or Kimberly 5 Hoolai St. Kailua. 60 Help Wanted Male/Female MODELS needed for fashion show, males/females. Will train. 423-0798. MILITARY SPOUSES DEPLOYMENT BLUES?? Polish your skills! Receptionist, Clerical Sec'y, Acc't. Clerk. Call Today! 533-8889. ADIA No Fee. P/T Receptionist for Niu Valley Physicians office. Good typing skills required. Call 373-2167. PART TIME Merchandisers, for greeting cards, days. Call Bonnie 622-5948. MILITARY Welcomelmmmed. P/T sales in retail store. 537-5911 ext. 54.

LIBERTY HOUSE GROUNDSKEEPER Liberty House is currently interviewing for a full-time Groundskeeper for our Distribution Center at Campbell Industrial Park. This person will be responsible for the maintenance of the landscaping, and perform housekeeping duties in the surrounding buildings and parking area. We offer pay commensurate with experience and excellent employee benefits including generous merchandise discounts. PLEASE APPLY AT THE PERSONNEL OFFICE Monday through Friday, 9:00 a.m.-3:00 p.m. or call 945-5015 Distribution Center 91-262 Oihana Street CAMPBELL INDUSTRIAL PARK An Equal Opportunity Employer Call SunPress 235-5656 to place your Classified ad.

HOME & APARTMENT GUIDE

Beachwalk ASSOCIATES, INC. WE'RE GROWING AND PROSPERING... COME AND JOIN US! We believe in flexibility and personal choices here at Beachwalk, so that means that we offer various commission schedules and we are willing to discuss YOUR particular needs and requirements and will work toward a mutually profitable arrangements. Our minimum commission split is 60%/40% and can advance to an 88%/12% with various areas in between, depending on your personal needs. We think the market is just fine and interest rates are good and we are not interested in negative predictions. Prices are holding and we are ready to work hard and enjoy continuing success, so give us a call. For a confidential interview, call MYRLA POSTON (PB) or BOB BALL (R), or stop in and chat anytime. ***PROPERTY MANAGEMENT AVAILABLE*** 108 Hekili Street #4 263-6111

HOMES FOR SALE!! If you're interested in viewing any of these homes call 254-1514 or 623-1616 Kaneohe Deck the Halls with festive trimmings in this 2 bedroom, 1.5 Alii Cluster Park townhome. Stunning views of Heaia Meadow-lands and the Koolaua. Tracy Stott (RA) 262-1392. \$229,000 (L). Milliani Selghbells Ring for this beautifully upgraded 3 bedroom, 2.5 bath Kookuala Hale townhome features blinds, plush carpet, new paint, and more. Priced to sell today: \$249,990 (F) Linda Fallance (RA) 625-0190. Wahiawa Even the Grinch would like this up-beat and delightful 2 bedroom Hidden Valley Estates townhome — has all a first-time buyer might want. Only \$173,950 (L) will take it. Linda Ballance (RA) 625-0190.

MAUNALANI HEIGHTS Opportunity awaits you to either build or renovate on this over 16,000 sq. ft. lot. Postcard views of the ocean city & Diamond Head can be yours. \$710,000 (F) Call: Larry Saito (RA) or Greg Natori (R) WAIPUNA Call today to see this beautiful renovated 2 bdrm 2 bath unit, new carpets, drapes, tile, kitchen counter tops, light fixtures & the fantastic views from this high floor unit are just some of the features you will find. \$550,000. (L) Call: Larry Saito (RA) or Greg Natori (R) GARDENIA MANOR Recently refurbished owner-occupied 2 bdrm 2 bath on the very private ocean side wing, cool and clean with 2 covered stalls. \$213,000. (L) Call Willie Ahana (CRS)

MAIN STREET, REALTORS BEAUTIFUL KANEOHE BAY VIEW LOTS FRAMED BY MAGNIFICANT KOOLAU CLIFFS the panorama is truly breathtaking! Location is a primary consideration when planning a home — so why not go for the best and experience the beauty of Hawaii every day — to the fullest! Three parcels are still available in this new waterfront cluster community. Square footage ranges from 6,915 s.f. — Prices range from \$324,500 to \$477,500 FEE SIMPLE. 44-315 KANEOHE BAY DRIVE Drive by and call for details: SUZANNE JACKSON 263-3522 ***** WATERFRONT ESTATE PARADISE FOUND! Here, on the south shore of Kaneohe Bay are two contiguous properties with three structures; each dwelling with its own personality yet a complement to the whole. A blend of early architecture and scenic beauty brings nostalgia to this peaceful setting. MLS #1720. \$2,350,000 FEE SIMPLE. Call the Lister/Owner for a private showing. MARJORIE YOKUM (R) 254-5311 118 Hekili Street, Kailua, Hawaii 96734 (808) 263-6999

Sun Press 235-5881 74 Apts. Partly Furnished ROOMY Bch \$600; Ready now 2 bdrm. \$820. 943-0094 Rent Mart Fee. 73 Apts. Furnished QUIET Kailua studio, 1 block beach, all util, cable, laundry fac. avail Jan. 1 for 1 person. \$600 263-2358 lve. msg. 74 Apts. Partly Furnished BIG apt, cat ok \$650. 2 bdrm. \$825. More. 943-0094 Rent Mart Fee. KAILUA large partly furnished studio, util. incl. Call 262-4239.

74 Apts. Partly Furnished PERSONALIZED RENTAL LOCATORS SAVING YOU TIME & MONEY! WE DO THE LEGWORK! NO LISTS TO CALL! NEW UNITS DAILY IN ALL OAHU AREAS. Studios... \$450 up 1 Bdrms... \$500 up 2 Bdrms... \$580 up 3 Bdrms... \$850 up 4 Bdrms... \$950 up Best deals located for you. 18 yrs. Experience on Oahu. If there's a deal we'll find it!! OAHU RENTAL SERVICE 98-025 Hekaha St. #2 Behind Cutter Ford Harbor Center 486-8994 or 486-3747 FEE. 76 Rentals To Share AIEA HEIGHTS share 3 bdrm., 2 1/2 ba. twinhse. w/ Jr. Office, covered pkg., pool, no smoking, great neighborhood, \$650 + 4 deposit & utilities. Doug 487-4945. ESTABLISHED COUPLE w/15 YRS. IN HAWAII looking to househit 2 to 4 weeks ASAP. Will take care of pets & utls. References galore! Sandy Kaiser 941-7575 or 955-5222

Real Estate 970 N. Kalaehe Ave. C114, Kailua, HI 96734 95-1249 Meheua B7, Milliani, HI 96789 85 Condos/Townhouses Partly Furnished KANEKOE RUDOLPH'S CHOICE Here'll bring all his pals over to show off this spectacular 3 bdrm., 2 ba. Clubview Gardens townhome. Assumable VA mortgage Bruce Kennedy (R) 254-4048, 9258,000 (F). 86 Condos/Townhouses Furnished MAKAHA Surfside, clean, ocean front, 1 bdrm., pool, pkg. \$700/mo. Call 834-2509. 88 Rooms For Rent ROOMMATE to share 3 bdrm. house on 28 acres in Kaneohe \$500 incl. utils. Call 239-5971. 93 Vacation Rentals ADORABLE KAILUA COTTAGE Across beach, private. Call 261-0756. AFFORDABLE priv. 1 bdrm. cottage, nr. beach & shops. Call 262-2212. It's easy to charge it. Visa/MasterCard pays for Sun Press Classified. 235-5656.

REHOUSE 523-8188 109 Condos/Townhouses For Sale HALEKAHEKA Beautiful 1 bdrm. w/2 parking stalls. (L) Larry Saito (RA) 523-8188. KAANAPALI SHORES Nice 2 bdrm. unit in this popular Maui condo! (L) Willie Ahana (R) 523-8188. KAILUA POINCIANA MANOR 2 bdrm., 2 ba. unit on cool quiet side of bldg. \$224,500 (L). Call Lynn Wells (R) 261-5649. KANEKOE HOKULOVA TOWNHOME w/mtn. view, 3 bdrm., 2 1/2 ba. Lowest at \$270,000 FS beautiful. 263-6999. MAIN STREET, REALTORS KANEKOE YULE ENJOY the superior condition & upkeep of this 3 bdrm. Hale Analoie apt. Loving owners make this unit a nese gardens. \$450,000. Price. Cherie Moncriel (RA) 262-4821, \$189,900 (L).

114 Real Estate For Sale 5+ Acre lots, nr. Newport. Wa. \$10,000. low dn. easy terms. Norm Nutter (RA) 681-4893, Debra & Co. 5+ Acre lots, nr. Newport. Wa. \$10,000. low dn. easy terms. Norm Nutter (RA) GRI 681-4893 Debra Co. BIG ISLAND SUNNY Hawaiian Paradise Pak. FS 3 bdrm., 2 ba home \$299,000 Marie Terri (R), 235-3649. KAILUA FEE SIMPLE on the golf course with swimming pool, Outie, 3 bdrm., 2 ba \$449,000. 263-6999. MAIN STREET, REALTORS KAILUA LAKEFRONT BEAUTY 3 bdrm., 2 bath, w/ pool & lovely view. 559,500 Fee Simple. 263-6999. MAIN STREET, REALTORS KAILUA LANIKAI WITH VIEW OF ocean. Guest apt. on lower level. Like new! \$795,000 FS. 263-6999. MAIN STREET, REALTORS KANEKOE NEAT 3 bdrm., 1.5 ba FS in nice neighborhood. \$320,000. Myrla Poston (R) 261-2293. KAILUA 180 DEGREE Oceanview & 8 islands view. 3 bdrm., 2 1/2 ba. \$985,000 FS. Bob Ball (R) 261-4258. KANEKOE OCEANVIEW brand new 3 bdrm., 2 1/2 ba. home w/ Spacious, with garage. \$389,500 Fee. 263-6999. MAIN STREET, REALTORS LEILANI Estates Hawaii, 1 acre lot, big trees, electricity, paved roads, playground, club house, small dn. \$25,000. Clark & Assoc. (B) 922-6945. OREGON Big trees, 3 bdrm., 1 ba., 3.3 acres, \$50,000 terms avail. John (RA) 293-2604. VILLAGE PARK HO HO HO Completely remodeled & expanded 3 bdrm., 2 ba. home w/ custom features galore. \$338,000 (F) Owner financing avail. Don Comeaux (R) 525-1950.

JUST ARRIVED!
40 FT. CONTAINER OF
QUALITY WICKER FURNITURE
NEW LINE!
FOSSIL STONE FURNITURE

WHITE OR NATURAL
6 DR. DRESSER reg. 600 **\$299**
LIVING ROOM
DINING ROOM
4 DR. CHEST reg. 500 **\$249**
SETS
LARGE
NIGHTSTANDS reg. 229 **\$109**
POTTERY
SELECTION

PRICED TO SELL
Baskets, Pottery, Shelves, Wall Units
Major Credit Cards
Accepted/We Deliver
"The Quality Wicker & Stone is Affordable Prices!"

RATTAN
MAN
(808) 528-5511
1130 N. Nimitz Hwy. #A112 Honolulu, HI 96817

60 Help Wanted Male/Female

120 Home Furnishings

RECEPTIONIST/BOOKKEEPER Salary per exper. dependable person with some office skills helpful. Aloha Key 537-4914.

SALES DEMONSTRATOR P/T weekends incl. to demonstrate Tandy PC computers at Hickam Base Exchange. Call any time Mark 677-2291.

SALES-Wholesales, commission. Warehouse - Order packer, delivery. Friendly company seek energetic people to fill immediate open position, exp. helpful. Call/apply at Aloha Key 537-4914.

SECRETARY/Receptionist Interesting & challenging position for a bright, energetic & flex. person w/well developed computer, secretarial & light bookkeeping skills. Must type 55wpm, possess excel. English. \$18,000/yr to start & excel. benefit package. Lots of variety & opportunity for advancement. Send Resume w/cover letter to:
Executive Director
Arthritis Foundation
45-1144 Kam Hwy #500
Kaneohe HI, 96744

BEST VALUES ON USED FURNITURE!

HOTEL DOUBLE BEDS **\$69**
KING SIZE **\$125**
8 DR. WOOD DRESSERS **\$139**
MATCHING NIGHT STANDS **\$39**
LAMPS, SHELVES, SOFAS, CHAIRS AND MUCH MORE!

FURNITURE CONNECTION
98-025 HEKAHA ST.
BEHIND CUTTER FORD A/E A
486-2677

SERVICE STATION ATT'D's morn./eve. shifts. 234 Lunailo Home Rd., Unocal 76, 395-2133

SPARE time bus. venture. People help people earn income. 537-5485.

TEACHERS Aide for Christian Preschool. Kailua. Call 262-8501.

TELEMARKETERS 9 needed Salary + commissions. Benefits. flex hrs. Call 735-6452.

TLA HOTEL needs P/T Front Desk Receptionist. Apply Pepper Tree Hotel, 98-150 Lipoa Pl., Alea.

VETERINARY 24 hr. Clinic needs F/T Kennel help. Ph. 235-3634.

VETERINARY 24 hr. Clinic needs F/T Receptionist. Ph. 235-3634.

WAITRESS needed full schedule, flex. hrs. must be exper. fun, & willing to work. No Name Bar & Restaurant. Hekeili St. Kailua.

WANTED part time worker for nursery. Windwardside. 247-4071.

LOCAL HOUSEHOLD MOVING
Apt./Condo/Home U Box U Save
Reliable Service
S&S DELIVERY
Expert piano moving
833-1857

MOVING?
We Buy Fine Quality Used Furniture. Fast, Free Pick-up.

PARADISE USED FURNITURE
235-8056

\$ CASH \$ WE BUY FURNITURE 486-2677

TEAK bdrm. furn. 8 dr. dresser \$125, 4 dr. chest \$90, dr. nite stands \$40, sealy single w/bed frame like new \$80 per set. 625-5639.

WANTED: Wedge (pie shape) corner unit. Please call 262-4302.

64 Domestic Jobs Wanted

BEST Buddies Childcare. Safe, fun, reliable. F/T, Kailua/Aiea. 254-3637.

CHILD CARE in my Makilo home, F/T, Mon.-Fri. hourly rate, all ages. 672-4208.

CHRISTIAN childcare, 1 to 2 children in my Kaneohe home. 235-0716.

DIANE'S DAY CARE & PLAY SCHOOL Experienced day care teacher/provider & mother starting day care play school in her home. Ages 2-5. Full time positions still avail. Call for appt. Diane, 239-7054.

MOTHER will baby sit Monday-Friday, 7am-5pm. Milliani 625-5135.

120 Home Furnishings

EXQUISITE kos chairs/rockers. Many styles. Wholesale by master chair builder. 293-8392.

Sun Press
235-5656



For advertising information, call **Sun Press**
235-5656

Oil Prices Going Up, Now's the Time to Buy!



Motorcraft Oil is formulated to meet or beat the highest gasoline-engine rating for oil.

SAE 30 SG/CE
SAE 5W-30 SG/CC
SAE 10W-30 SG/CC
SAE 10W-40 SG/CC
SAE 15W-40 SG/CE
SAE 20W-40 SG/CE
TYPE F ATF
MERCOR® ATF
Motorcraft

QUART Reg. 1.85 Any Grade **99¢**
CASE Reg. 22.20 Any Grade **11.64**
Offer expires 1/15/91

CUTTER FORD
98-015 KAM. HWY. • 487-3811
NEW Extended Parts Hours
Mon.-Fri. 8:00 am-6:30 pm
Sat. 8:00 am-4:30 pm

WHY BUY A COPY WHEN YOU CAN AFFORD THE ORIGINAL?



There's no reason to settle for second best, when GM Goodwrench parts are readily available and competitively priced. GM Goodwrench parts are designed specifically for your GM vehicle. So they fit right, they work right, and they last longer.

GM Goodwrench branded parts are available only at your GM dealer. So stop in and discover the difference Mr. Goodwrench makes. Get genuine GM parts from Mr. Goodwrench.

It's not just a car, it's your freedom.

Mr. Goodwrench RAINBOW CHEVROLET
630 Piikoi Street • 522-5454
Extended Parts Hours
Mon.-Fri.: 8:00 am-6:30 pm
Sat.: 8:00 am-4:30 pm

BY POPULAR DEMAND!

CUTTER FORD PARTS DEPARTMENT NOW OPEN

MONDAY THRU FRIDAY 8:00 AM TO 6:30 PM
SATURDAY 8:00 AM TO 4:30 PM
98-015 KAMEHAMEHA HIGHWAY • 487-3811

LIFETIME SERVICE GUARANTEE

If you ever need to have your Ford, Lincoln, Mercury or Ford light truck fixed, you pay once and we'll fix it free—free parts, free labor. On customer paid repairs, the guarantee covers thousands of parts as long as you own the car. Ask us to see a copy of the Lifetime Service Guarantee. No one else covers so much for so long. See us now!

144 Musical Instruments

HARPSICORDS: Modern copies of 18th century instruments from \$3350, 235-3040

PEAVEY SPEAKERS TK65, \$400, like new! Call 737-9154.

STEINWAY upright practice piano, antique, sound like Garshwin. \$8000, 262-2088.

148 Water Sports Equipment

KAYAK PADDLES for sale. Rosaki only used by 5' Grandma \$350, Cuda by 5'6" Grandpa \$450. Call 236-0118.

151 Pets/Everything

PET'S CENTRAL

PURE BRED REGISTERED IMPORTED PUPPIES IN STOCK

Health Guaranteed in writing

FULL SELECTION OF EXOTIC BIRDS

Complete line of pet supplies

2333 Alahoa Pl. Bldg. E (Just off Sand Island Rd.)
Ph. 848-1688
10 a.m.-6 p.m., 7 days a week
VISA, MasterCard, AMEX

147 Sporting Goods

45 PISTOL Registered. \$500 firm. 948-0200, leave message.

148 Water Sports Equipment

63 FT. CLASSIC wood sail/houseboat, partly restored. Serious only will finance \$30,000. No wimps!! 836-0060.

BOAT repair or any fiberglass or epoxy work. Kare's fiberglass. 789 Kailua Rd. 261-8424.

KAYAK RENTAL. Very stable touring, 1 & 2 man kayak. Kare's fiberglass. 789 Kailua Rd. 261-8424.

WET suit jacket. Womens size extra small \$15, 263-4382.

151 Pets/Everything

6 MONTH female Shep./Lab. All shots, good w/ kids \$75/offer. 254-4228.

AKC TOY POODLE puppies. Tiny black, tiny silver & cream white, shots. Sweet temperamental \$400 to \$650. Call 247-0051.

AAA BASENJI pups, purebred, red whites. Choose now for Xmas!! \$150. 235-2269 evea.

GOLDFISH-Oranda & Lion Heads-various colors/sizes. Call 261-6257.

IN need of qual. affordable vet care? Dr. Eric Pearson's Home Pet Svc. 235-8457 Islandwide.

NEW GIANT CAGE & PAN 46x28x36, wire, food & carry. \$125. 262-2088.

CAR PAYMENTS A PROBLEM?

Is your loan pay-off greater than the value of your car?

Unable to Sell or Trade?

Avoid Repossession... Save your Credit

Auto leasing company can assume loans and leases on cars and trucks with underwritten guaranty

PACIFIC AUTO LEASE 247-0220

151 Pets/Everything

156 Auto Service & Parts

171 Motorcycles & Scooters

'82 HONDA GL 500 Silverwing Motorcycle \$800. Call 235-6739.

HONDA
"Come Ride With Us"
NEW
HONDA MOPEDS
BEST DEALS IN HAWAII
Sandy Brodie's
671-2691

SAVE MORE JINGLE HERE!

'80 CHEVY CITATION Brown, Auto ANG356 \$395	'79 PONTIAC FIREBIRD White, Auto, A/C, P/S, AM/FM BBR065 \$995	'82 FORD GRANADA Beige, Auto, P/S BGR766 \$995	'78 DODGE VAN Yellow, Auto CNN481 \$995
'86 TOYOTA TERCEL S/W L. Blue, Auto, A/C, P/S, AM/FM CCV436 \$4595	'84 NISSAN 200SX Red, Auto, A/C, P/S, AM/FM BUV674 \$4595	'89 NISSAN SENTRA 4 Speed DBB496 \$5995	'89 NISSAN SENTRA 4 Speed DBB496 \$5995
'84 NISSAN 300 ZX COUPE Silver, 5 Sp., A/C, P/S, P/O BWC388 \$6495	'89 CHEVY CORSICA Silver, Auto, P/O, A/C BDF934 \$7995	'89 FORD T-BIRD Black, Auto, P/O, A/C MPX696 \$9995	

TOYOTA CITY USED CAR CORRAL

Wahiawa 621-0020

PUT A CAR UNDER THE TREE THIS CHRISTMAS!

'78 FORD VAN Auto, V-8 T-1132 \$595	'86 VW GOLF Auto, A/C P-1028 \$3411	'86 CHEVROLET C-10 STEPSIDE Auto, A/C, P/W, Loaded P-847 \$7633	'90 CHEVROLET S-10 P/U Only 12,300 miles P-1041 \$7911
'90 TOYOTA COROLLA 4 DSD, Auto, A/C, 4 To Choose From! \$9277	'86 BMW 325 2 DSD, Auto, Sunroof P-1041 \$9932	Sole ends Dec. 27, 1990.	

961 Center St. Wahiawa

Last Minute SHOPPER

'83 FORD FAIRMOUNT 6 Cyl., Auto, P/S AVP637 \$1395	'84 CHEVY CELEBRITY 4 DR. Auto, P/S, A/C BXP698 \$3195	'83 CHEVY CAMARO 8 Cyl., Auto, P/S, A/C, P/W AWT419 \$3395	'86 NISSAN SENTRA 2 DR. Auto, P/S, A/C CCY614 \$3595
'85 CHEVY MONTE CARLO Auto, P/S, A/C CEV649 \$3695	'87 TOYOTA TERCEL 4 DR. H/B Auto, P/S, A/C HJW613 \$4495	'83 CADILLAC ELDORADO Auto, P/S, P/W, P/DL, Sunroof MHH269 \$5395	'85 BRONCO II Auto, P/S, A/C BYC282 \$5695
'85 CHEVY BLAZER 6 Cyl., 5 Sp. CW217 \$6195	'87 FORD TAURUS GL 4 DR. Auto, P/S, A/C, P/DL, T/W, CC CNB338 \$6495	'88 CHEVY BLAZER 6 Cyl., CVJ772 \$10,295	'87 ACURA LEGEND 4 DR. 5 Sp., Loaded CRC884 \$12,795

SERVICE MOTOR COMPANY Wahiawa
Offer good till Dec. 27, 1990 - See dealer for details.
105 S. Kam Hwy. • 622-4195 • 621-8454 Service • 622-1621 Parts

Sun Press

151 Pets/Everything

PUPS to adult dogs. Pure bred-mixed breeds. Pitbull terrier 668-7222.

REDUCING INVENTORY Himalayan cats & kittens. Kaneohe Kattery 235-3331

156 Auto Service & Parts

'86 ISUZU P/U, low mi., new tires/bat. campertop, w/frack \$3500. 847-5285

'87 RAM 50 P/U. Pick up. Orig. owner. \$5500/offer. Call 259-7730.

'90 FORD Ranger, AM/FM cass., bedliner \$6200. Call 499-1814 eves.

4 TIRES & RIMS fit 240Z. Enkei Rims, Goodyear Tires. Asking \$390. Jaelene 254-4880.

ALL 170 1990's MUST BE SOLD BY DEC. 24, 1990!

LOWEST PRICES OF THE YEAR



WAIPAHU GEO

1990 PRIZM

'90 Geo Prizm Sedan (010071) (Demo) Auto, air, P/S, AM/FM, power locks. **\$9,299***

'90 Geo Prizm Sedan (010488) (Demo) Auto, air, P/S, AM/FM, power locks. **\$10,199***

'90 Geo Prizm Sedan (010529) (Demo) Auto, air, P/S, AM/FM/CASS. **\$10,599***

'90 Geo Prizm 5Dr H/B (010842) Auto, air, P/S, AM/FM/CASS. **\$11,399***

'90 Geo Prizm GSi (010505) Auto, air, P/S, AM/FM, Power Pkg. Loaded!! **\$13,799***

1990 STORM

'90 Geo Storm 2+2 (000310) (Demo) 5-Speed, air, AM/FM/CASS, more. **\$9,999***

'90 Geo Storm 2+2 (000301, 000209, 000095, 000205) 5-Speed, air, AM/FM/CASS, more. **\$10,599***

'90 Geo Storm 2+2 (010618) Auto, air, AM/FM/CASS. **\$10,999***

'90 Geo Storm GSi (010472) Auto, air, AM/FM/CASS, sport pkg. **\$12,399***

1990 TRACKER

'90 Geo Tracker (000230) 4x4, 5-Speed, air, AM/FM/CASS. **\$11,699***

'90 Geo Tracker (010717) 4x4, 5-Speed, air, AM/FM/CASS, more. **\$11,799***

WAIPAHU CHEVROLET

1990 CORSICA

'90 Corsica LT (010188) (Demo) Auto, air, P/S, AM/FM/CASS. **\$10,599***

'90 Corsica LT (010421) Auto, air, P/S, AM/FM/CASS, Power pkg., loaded!! **\$12,899***

'90 Corsica LT (010425) Auto, air, P/S, AM/FM/CASS/EO, Power pkg., loaded!! **\$12,999***

1990 BERETTA GPE.

'90 Beretta Coupe (010578) Auto, air, P/S, AM/FM/CASS, Power wind. & locks **\$12,599***

'90 Beretta GT (010559) Auto, Air, P/S, AM/FM/CASS, Power wind & locks, GT Pkg. **\$13,599***

'90 Beretta GTZ (000263) 5-Speed, air, P/S, AM/FM/CASS, GTZ pkg, power wind & locks **\$13,999***

1990 CAVALIER

'90 Cavalier 4Dr. (010345) (Demo) Auto, P/S, air, AM/FM, tin/L **\$8,599***

'90 Cavalier 4Dr. (010641) Auto, P/S, air, AM/FM, tin/L **\$8,599***

'90 Cavalier 2Dr. (000331) Auto, air, P/S, AM/FM/CASS, more **\$10,399***

FULL SIZE PICKUP

'90 Fleetside Pickup (000321) Auto, V-8, air, P/S, AM/FM, moulding, more. **\$12,499***

'90 Fleetside Pickup (010730, 010786, 010811) Auto, V-8, air, P/S, AM/FM, more. **\$13,399***

'90 Fleetside Pickup (010826) 4x4, 5-Speed, air, P/S, V-8, AM/FM, more. **\$14,099***

1990 LUMINA APV

'90 Lumina APV (000278) Auto, air, P/S, AM/FM, more. **\$14,499***

'90 Lumina APV (010772) Auto, air, P/S, AM/FM/CASS, Power wind & locks. **\$16,599***

'90 Lumina APV (010777, 010853) Auto, Air, P/S, AM/FM/CASS, Power wind & locks. **\$16,699***

WAIPAHU TOYOTA

1991 Toyota Tercel Std.

- All New Styling
- 1.5L 12 Valve Engine
- 4 Speed
- Halogen Headlamps
- Rustproofing

Only 12 in Stock

33/37 CITY HWY

\$6969*

1991 Toyota Pickup 4x2

- 2.4L EFI
- 5 Speed Manual Tires
- Double Wall Bed
- Styled Wheels

Only 14 in Stock

22/26 CITY HWY

\$8198*

1991 Toyota Pickup 4x4

- 2.4L EFI
- 5 Speed Manual Trans.
- Double Wall Bed
- Tilt Steering
- Mudguards
- & More

Only 16 in Stock

19/22 CITY HWY

\$12,990*

WAIPAHU SUZUKI

1991 Suzuki Swift

- 1.3 Liter EFI Engine
- AM/FM
- 5 Speed Trans.

12 in Stock

28/29 CITY HWY

NOW ONLY \$6669*

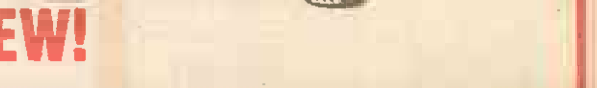
1991 Suzuki Sidekick Soft Top

- 1.6 Liter EFI Engine
- 5 Speed
- AM/FM Stereo
- 4x2

15 in Stock

28/29 CITY HWY

NOW ONLY \$10,395*



WHY BUY A USED CAR WHEN YOU CAN OWN A NEW!

WAIPAHU AUTOMOBILE CENTER
ONE STOP SHOPPING AT UNBEATABLE PRICES!

CHEVROLET • TOYOTA • SUZUKI • GEO • COMMERCIAL/TRUCK/FLEET • USED CARS • SERVICE • PARTS • BODY SHOP

WAIPAHU TOYOTA
PH 677-3161
94-757 Farrington Hwy.

WAIPAHU AUTO
Chevrolet/Geo
PH 671-2871
94-729 Farrington Hwy.

Family Motors

Special Financing! E3, E4 & Above!

\$99* DELIVERS, O.A.C.

'82 CHRYSLER LEBARON CONV. P/W, A/C, Auto, Cass. AUDD85 **\$2195**

'85 CHEVY CAVALIER 4 Dr, A/C, Auto, Cass. P/S GAT548 **\$2695**

'85 FORD MUSTANG LX Auto, A/C, Sunroof, Cass. DFA460 **\$2995**

'83 VOLVO 4 DR. Sharp, A/C, Auto, Sunroof, Cass. GBU778 **\$4295**

'85 PONTIAC FIERO V-6, P/W, A/C, Sunroof. CAR866 **\$4495**

'84 JEEP CHEROKEE A/C, P/S, Cass, 4x4 DB785 **\$6495**

'84 SENTRA S/W A/C, Auto, P/S GAV052

'86 TOYOTA TERCEL 2 Dr., P/S, Cass CC3707

'85 BUICK SKYHAWK Auto, A/C, P/S, Cass. CAA457

'82 LINCOLN CONTINENTAL Loaded! BXT490

'85 TOYOTA CELICA Auto, A/C, P/S, Cass. CHA457

'86 CHEVY ASTRO SAFARI VAN Auto, A/C, 8 Pass P/S, Chrome Wheels GTX857

SPECIAL MILITARY FINANCING
NEW IN HAWAII!
FAIR CREDIT - NO CREDIT - SO-SO CREDIT?
WE ARE EXPERTS IN FINANCE
(INCLUDING BANKRUPTCIES)
Dec. 27, 1990

In House Financing • Instant Delivery
*Plus Tax & Lic. Subject to Prior Sale • Call for Directions
Open 7 Days a week 9 a.m.-6 p.m. Schedules 11 a.m.-4 p.m.
94-267 Farrington Hwy. at Leokane
Waipahu, HI 96701 Ph: 676-1600

Bring your Christmas WISH LIST...

'81 BUICK REGAL 2 DR. COUPE Auto., A/C, P/S, P/W, AM/FM BJO567 **\$4295**

'83 TOYOTA CORROLA SR5 2 DR. H/B Auto., P/S, AM/FM BUV527 **\$2995**

'84 CHEVY CAMARO Auto, A/C, P/S, P/W, AM/FM Cass. DTE200 **\$3995**

'80 MAZDA 626 2 DR. COUPE Auto., A/C, AM/FM Cass. CYC184 **\$1995**

'83 TOYOTA CELICA ST COUPE Auto., A/C, P/S, AM/FM AWA855 **\$3495**

'85 HONDA CIVIC 4 DR. S/W 5 Speed, P/S, Radio CAJ276 **\$3995**

'85 FORD TEMPO GL 2 DR. SEDAN Auto., P/S, AM/FM CDC237 **\$2995**

'85 MAZDA GLC 4 DR. SEDAN Auto., AM/FM BXA316 **\$3495**

'87 ISUZU PUP 4 Speed CPX241 **\$3895**

'84 NISSAN 200 SX 2 DR. COUPE Auto., P/S, AM/FM Cass. BXR982 **\$2995**

'86 BUICK CENTURY 4 DR. SEDAN Auto., A/C, P/S, AM/FM CDD092 **\$3995**

'89 TOYOTA TERCEL 3 DR. H/B 4 Speed, A/C, Radio CWW811 **\$4895**

KAIMUKI TOYOTA
735-1737
A DIVISION OF SERVCOR PACIFIC
Corner of 6th Ave. & Wai'alae

PREMIER FREE MIKE SALTA PICK-UP & DELIVER SERVICE

YEAR END CLOSEOUT PRICES

PREMIER FREE MIKE SALTA 24-HOUR ROADSIDE SERVICE

\$5995

TAKE YOUR PICK!
NEW 1991 ISUZU TRUCK OR PONTIAC LEMANS

'91 PONTIAC GRAND PRIX #201509 **\$11,995**

'91 PONTIAC GRAND AM #569926 **\$8,495**

'91 ISUZU IMPULSE #402918 (Nimitz Location Only) **\$9,595**

'90 PONTIAC BONNEVILLE #209079 **\$12,995**

All prices are plus freight as follows: All Isuzu's 299, Lemans 325, Grand Prix 475, Grand Am 455, Bonneville 525. All Vehicles subject to prior sale. Prices are Plus Tax, License and 129 documentation fee. Advertised prices include \$600 first time buyer's rebates on Pontiacs. Advertised prices and rebates are not combinable. OFFER ENDS December 26, 1990.

171 Motorcycles & Scooters

'85 HONDA 450, excl. cond., 9,000 mi. \$950. Call 842-1718.

'86 KTM 500 up to '89 specs. Many new parts. Runs & looks great \$1500/offer. 261-901 from 6-10pm.

HONDA MOPED SALE. Many used parts. Also service & repairs. Rentals & leasing. 941-1227 Freedom Rentals.

CYCLE TECH
Parts and Repairs. All makes, Motor Cycles and Mopeds.
Kaneohe 235-1531 (behind Jack In The Box)
Pearl City 456-4808 (next to Pizzzo Hut)

174 Heavy Machinery & Equipment
FOR RENT John Deere 555 loader w/optional hoople reas. rates. 239-2438 anytime.

175 Vans & Campers 4 Wheel Drive

'85 VOLKSWAGEN Van \$1800 or best offer. Call evenings. 239-7424.

'77 FORD VAN new, rebuilt engine with A/C. 261-5634.

'79 FORD VAN. Needs windshield. \$850/offer. 948-0200 lv. message.

176 Autos For Sale

USED CARS

'76 DAIATRA #10 197609 3995

'76 DAIATRA #10 197609 3995

'77 ASPEN #10 197704 1495

'75 DODGE 100 P/W 197509 1495

'76 TOYOTA TERCEL 197610 1795

'76 COROLLA 197610 1795

'78 DAIATRA #10 197804 1795

'78 MAZDA 626 197804 1795

'78 CHEVY #10 197804 1795

'78 DODGE 100 197804 1795

'78 MAZDA 626 197804 1795

'78 CHEVY #10 197804 1795

'78 CHEVY #10 197804 1795

'79 DAIATRA 197904 1795

44-744 Kaneohe Bay Dr. Bonded Dealer Lic. #385

SELL • BUY TRADE • CONSIGN **235-9999**

CAR PAYMENT RELIEF!

Is your Loan pay-off greater than the value of your car?
Unable to Sell or Trade?

AVOID REPOSSESSION, SAVE YOUR CREDIT!

We have ready clients to take-over Auto Loans & Leases

CREDIT LINE SERVICES
521-5944

Chevrolet

'79 MALIBU, 2 dr., high mi., small rust spot, some work needed, good running around car \$1000. Call 261-2430.

Ford

'70 MAVERICK 6 cyl., auto, alum. mag. hitch, \$200, 236-4112 lv. msg.

GRANADA 6 cyl., 4 dr., good shape. \$550. 261-1828

'88 T-BIRD, black, mint cond., inside & out. Loaded w/P/L, P/B, A/C, AM/FM cass. Mechanically sound. Call Diane 839-5467.

Honda

'77 CIVIC no beauty, but runs great. \$500/offer. 623-1106 or 537-4369.

'85 PRELUDE 5 spd., a/c, looks & runs great, new tires. \$5900 247-8409

'90 CRX Si Red, 5 spd., sunroof. JVC AM/FM cass., alloy rims, spotless. \$10,900. Cindy 254-5785 or 235-5881.

Mazda

'84 626 blue, excel cond., 4 dr., a/c, auto., P/S, P/B, \$4000/offer. 926-9775

It's easy to charge it. Visa/MasterCard pays for Sun Press Classified. 235-5656.

'87 626 LX 5 dr. White w/ grey int. Low mileage. \$7500/offer. Must sell. 951-7420

'90 626 5 dr., silver. Fully loaded. rust proof. extended warranty, only 3000 mi. \$12,000 takes it. 524-8149.

NIMITZ WAIPAHU

MIKE SALTA
PONTIAC-ISUZU-DAIHATSU
#1 LOCATION HONOLULU 2945 N. Nimitz Hwy. 836-2441
#2 LOCATION WAIPAHU 94-212 Leoku St. 671-8033

1986 Mercury Topaz GS 4 cyl., 4 dr., A/C, P/S, P/S, AM/FM, Auto. #LH4-719 \$3995	1986 Dodge Omni 4 dr., 4 cyl., Auto, AM/FM, P/S, P/W, H, Tilt, Cruise. #CEG-382 \$1995	1986 Mazda 626 4 cyl., 2 dr., 5 spd., AM/FM Cass. P/S, P/W, H, Tilt, Cruise. #CGA-828 \$4995	1987 Dodge Charger 4 cyl., 5 spd., AM/FM Cass. #CJY-460 \$2995	1987 Chevy Spectrum 4 dr., 4 cyl., 5 spd., AM/FM Cass. A/C, P/S. #CVV-437 \$3495	1988 Mercury Topaz 4 dr., 4 cyl., Auto, AM/FM Cass. P/S, A/C. #CTV-545 \$6895
1985 VW Golf 4 dr., AM/FM Cass. A/C #CCT-915 \$3995	1985 Olds Cutlass Sup. 2 dr., 6 cyl., auto, AM/FM Cass. P/W, P/L, H, Tilt, Cruise, A/C. #BYD-883 \$4795	1987 Ford Crown Victoria 4 dr., 8 cyl., Auto, AM/FM Cass. Cruise, Tilt, Leather, H, Tilt. #CPT-557 \$8295	1989 Toyota Tercel 3 dr., 4 cyl., 4 spd., AM/FM Cass. A/C. #CXA-676 \$5295	1984 Ford Bronco 4x4 6 cyl., 4 spd., AM/FM, P/S, A/C. #CTB-138 \$6995	1984 Cadl Seville 8 cyl., Auto, AM/FM, P/S, A/C. #PWE-637 \$7995
1981 Jeep Cherokee 8 cyl., P/S, Auto #CJUE-047 \$3295	1979 Chevy Corvette 2 dr., 6 cyl., auto, AM/FM Cass. P/W, P/L, T-top. #HFA-468 \$8395	1987 Dodge Charger 4 cyl., 5 spd., AM/FM Cass. A/C. #CJF-674 \$3595	1985 Nissan Sentra 4 cyl., 2 dr., Auto, Cass. P/S. #BYX-327 \$1495	1984 Chevrolet Camaro 8 cyl., Auto, P/S, H, P/W, Cass. #DPS-000 \$3795	1988 Isuzu I-Mark 3 dr., 5 spd., AM/FM. #CSX-419 \$4295

The CUTTER TEAM

HAWAII'S DRIVING FORCE

BANK FINANCING AVAILABLE
ALL STORES OPEN
8:30 A.M.-9 P.M.
SUN. 9 A.M.-6 P.M.

*SPECIAL MILITARY FINANCING
WITH FORD CREDIT, CHRYSLER CREDIT AND GMAC
TAKE IT WITH YOU WHEN YOU LEAVE NO HASSLES—NO RED TAPE

CUTTER FORD-ISUZU
98-015 Kamehameha Hwy.
AIEA
487-3811

CUTTER CHRYSLER-PLYMOUTH
DODGE JEEP/EAGLE
735 Dillingham Blvd.
HONOLULU
842-6300

CUTTER DODGE
2 GIANT LOCATIONS!
921 Kam Hwy. PEARL CITY
455-1071
735 Dillingham Blvd.
842-6300

CUTTER MITSUBISHI
94-149 Farrington Hwy.
WAIPAHU
671-2626
Across from Gem

RAINBOW CHEVROLET
COURTESY PONTIAC
1391 Kapiolani Blvd.
HONOLULU
946-8311

Holiday Savings

WRAP UP A GOOD DEAL
PRICES BELOW FACTORY INVOICE

These Buys Are Guaranteed

TO MAKE Christmas MERRIER!

'91 COLT
4 Cyl., Bucket Seats #10000
\$6588
31/36 mpg City/Hwy.

WAIPAHU CUTTER MITSUBISHI

#1 MITSUBISHI DEALER
ENTIRE STATE OF HAWAII

RING IN THE SAVINGS

'91 ISUZU P/U (#977) 2.3 L, Mirrors, 5 Spd.
\$5988

DODGE '91 COLT
#110014 SPECIAL PRICE
\$6588
D-50 P/UP
#110032 4 Cyl.
\$7588

STOP HERE AND SAVE!

CUTTER DODGE

'91 BRAND NEW MITSUBISHI MIGHTY MAX P/U
2.4 Liter Engine, Tilt Wheel, Step Bumper, Style Road Wheels, Tinted Glass, Rear Cargo Light + Much More M3206
\$5998*

THIS COUPON GOOD FOR \$200

Sale good 'til Dec. 27, 1990
Clip & Present Coupon before deal is completed. GET \$200 CASH
*This coupon is only valid on day of purchase.

'91 MUSTANG GT (#612) 5.0 V-8, Cass., P/W, Loaded
\$14,488

'91 SHADOW (#110103) A/T.
\$9988

'91 D50 4 Cyl., 4 Spd., Bumper #110037
\$7588

'91 BRAND NEW MITSUBISHI ECLIPSE GS
P/S, Tilt, Tack, AM/FM Cass., 4 Whl Disc Brakes, Elec R/Window Defrost. M3238
\$10,988*

'90 CAVALIER 4 DR. SEDAN
2.2 EFI Engine, Cloth Bucket Seats, P185/180R 13" Radial Tires, 5 Speed Trans.
\$8695
(0-6989)

'91 FESTIVA (#873) Great Value For Small Price
\$5988

DAYTONA (#110066) V6. A/T
\$12,604
CARAVAN (#11121) BEST BUY!
\$11,888

'91 D50 4 Cyl., Auto, Bumper #110042
\$7988

NEW MITSUBISHI GALANT 4 DR.
Auto, Air, P/S, Tilt Wheel, AM/FM Cass., + More M3219
\$11,988*

'90 CHEVY LUMINA EURO 4 DR.
3.1 L, V-6, Auto, O/D, P/S, Air, Spt. Mirrors, AM/FM Cass., Alum Whls, Cruise
Demo DJE073
\$11,995
(0-6188)

'91 RANGER P/U (#948) 2.3 L, 5 Spd, Bumpers & Mirrors. #1 In Its Class
\$7488

JEEP-EAGLE SUMMIT
#ED182
\$8,206

'91 COLT 4 Cyl., 4 Spd., Air, #110116
\$7588

NEW MITSUBISHI MONTERO RS
V-6, P/S, Disc Brakes, Auto O/D Trans., Tilt, AM/FM Cass., Limited Slip Diff 4x4 + Much Much More M2918
\$14,988*

'90 PONTIAC SUNBIRD GT COUPE
2.0 LOHC Turbo, 5 Speed O/D, 14" Alum Whls., Air, P/S, P/L, AM/FM Stereo, Tilt, Cruise, Spt. Mirrors, Fir. Mats
\$11,995
(P-0611)

'91 MUSTANG LX (#609) AM/FM Cass., P/W, P/Locks & Lots More
\$9588

PREMIER LX (#ED058) 3.0 A/T, PS
\$11,992
COMMANCHE P/UP (#J90226) 4x4, 4.0
\$11,899

'91 SHADOW 4 Cyl., Auto., #110103
\$9988

FULL TANK OF GAS WITH ANY NEW VEHICLE PURCHASE

'90 PONTIAC GRAND PRIX LE SEDAN
Auto, 4 Speed, Fog Lamps, 15" Alum Whls., P205/65R15 Tires, Cruise, 3.1 FI V-6
\$13,895
(P-0618)

'91 PROBE GL (#559) 2.2 L, ER, Tilt, Another Ford Winner!
\$10,488

CHEROKEE (#97074) 4x4 OF THE YEAR
\$15,476
WAGONEER (#97067) DEMO 4x4
\$24,974

'90 SPIRIT 4 Cyl., Auto., Air, Cass. #11136
\$11,388

CREDIT? WE DO MAGIC!
CALL CREDIT MANAGER
671-2626

USED CAR SPECIALS

'90 TAURUS WGN. (#2596) Auto, V-6, Air, AM/FM P/W, P/L, America's Design Leader
\$12,588

CHRYSLER LeBARON COUPE
#15055 DEMO, LUXURY PACK
\$13,291

'91 VISTA WAGON Air, 7 Pass. #110023
\$11,488

'79 CHEVY CHEVETTE 4 Dr., Auto, Air - Much More AU1331
\$388

'77 DODGE COLT
Bumper #15055
\$395

'91 T-BIRD LX (#900) Auto, Air, Cass. Great Price!
\$13,988

CHRYSLER LeBARON CONV.
#15556 3.0 A/T, A/C
\$17,989

'90 CARAVAN 4 Cyl., 5 Pass. Wagon #1121
\$11,488

'80 FORD T-BIRD Loaded #8778
\$988

'79 FORD MUSTANG A2047 Sharp
\$495

'90 E-150 VAN (#2309) 1/2 Ton, V-6, Auto, P/S, Great Price
\$11,488

CHRYSLER LeBARON CONV.
#15556 3.0 A/T, A/C
\$17,989

'79 BUICK CENTURY (ATT006 #6257)
\$495

'84 FORD ESCORT WAGON Auto, Air - More CT528
\$988

'79 MERCURY COUGAR 2 DR. Bumper #15055
\$595

'91 AEROSTAR WGN. (#537) 3.0 V6, 7 Pass., Air, in Class by itself
\$12,988

PLYMOUTH '91 COLT
#120003 SPECIAL PRICE
\$6588

'84 HONDA CIVIC WAGON (BX6507 #6273)
\$1,495

'80 FORD T-BIRD Auto, Air, P/S, P/W BTR358
\$2988

'80 CHEVY CHEVETTE 4 DR. ACW313
\$995

'70 VALIENT 6 Cyl., Auto #67244
\$195

COLT WGN (#15481) 1.5 LU6E, RACK
\$8388
SUNDANCE (#15381) 2.5, A/T
\$8994

'85 CHEVY CELEBRITY WAGON (CCE882 #6196)
\$2995

'84 FORD TEMPO LX Auto, Air, Tilt, Cruise + More BU525
\$2488

'83 MAZDA 626 COUPE Auto, Air, P/S + More AW175
\$2988

'75 ELITE V-8, Auto, P/S #J9792
\$295

'91 ACCLAIM (#120133) 2.5, A/T.
\$11,554
GRAND VOYAGER (#15446)
\$16,357

'85 FORD CROWN VIC S/wgn (MJR494 #6181)
\$3795

'83 MAZDA 626 COUPE Auto, Air, P/S + More AW175
\$2988

'82 MAZDA GLC S/W #17396 Auto
\$995

487-3811 CUTTER FORD-ISUZU

'87 NISSAN SENTRA (CEG431 #6173)
\$3795

'87 CHEVY CELEBRITY Auto., A/C, P/S., + More CNG905
\$3988

'84 NISSAN SENTRA 2 DR. E-1948
\$2395

*Prices include all factory incentives Isuzu p/u plus \$299 freight. Subject to prior sale. Plus tax, lic. and \$129 doc. fee. See ends 12/27/90.

Plus tax, lic. & \$129 doc. fee. Subject to prior sale. Exp. 12/27/90

Plus tax, lic. & \$129 doc. fee. Subject to prior sale. Exp. 12/27/90

All prices & discounts incl. any and all applicable rebates Cars subject to prior sale. Prices plus tax, lic. & \$129 doc. fees. OAC Sale ends Dec. 27, 1990. *\$328 freight chg. for all nr vehicles.

Prices include any & all factory rebates, not combinable with special finance rates. Includes special GMAC First Time Buyers Assistance. Rebates & assistance on selected models. Subject to prior sale, plus tax, lic. & \$129 doc. fee. Sale good 'til Dec. 27, 1990. Cars not exactly as shown.