



The Mercedes-Benz eVito Tourer.

Tourer model.

Prices effective from December 2020.

Mercedes-Benz





Contents

> Model overview	3
> Mercedes PRO connect	4
> Trims	
eVito Tourer PRO	5
eVito Tourer SELECT	6
> Colours and Upholstery	7
> Equipment	8
> Charging options	16
> Battery and eMotor	17
> Range, Performance and CO ₂ emissions	18
> Weights and payloads	19
> Dimensions	20
> List prices	22
> EQ Ready App	23
> eReady finance	24
> After care	25

Please note

This document provides information about the model range line-up and specifications of the eVito Tourer. It also contains key details about options, economy and performance of all variants. Details are correct at time of publication and are subject to revision. Any images used in this document may not reflect UK specification and are for illustrative purposes only. Images may show optional equipment which does not form part of UK standard specification.

The Mercedes-Benz eVito Tourer.

1 model:	Tourer: 9 seats as standard
2 lengths:	L2: 5,140mm L3: 5,370mm
2 trims:	PRO SELECT
2 charging powers:	AC 11kW (Standard) DC 110kW (Standard)
2 linear speed limiters:	140km/h (Standard) 160km/h (Optional)

Combined WLTP ranges:
217 miles - 221 miles (140 km/h)*

Charging times:*

• AC 11kWh

0-100% in 10 hours

• DC 110 kWh

up to 80% in 40 minutes



Discover more about the other Mercedes-Benz Vito Tourer diesel models in our range:

[▶ The Vito Tourer diesel range](#)

Discover more about the other Mercedes-Benz electric models:

[▶ The electric vehicles range](#)

*Charging times are subject to the power available at the location where the vehicle will be charged as well as factors such as temperature and cable type used. Time stated is based on 7.4/80 KW power available.

The eVito Tourer. Intelligently connected.

Mercedes PRO connect – FREE for 2 years*

Every eVito Tourer comes with Mercedes PRO connect, the most powerful integrated van monitoring system on the market – included free as standard, for the first 2 years. Send job and navigation details direct to the driver's phone and you monitor the van's performance, charging levels and security status via an app on your phone, tablet and laptop – to give you:

> More safety

- **Accident recovery and roadside assistance** summons a MobiloVan technician if required†.
- **MB Emergency Call System** automatically calls the emergency services in the event of a severe accident.

> More security

- **Theft warning alerts, geo-fencing and GPS tracking.** Receive alerts straight to your mobile, making it easier to recover lost or missing eVito Tourers.
- **Remote locking** enables drivers to check the status of, and lock and unlock, each door from anywhere in the world.
- **See each vehicle's location in real-time** – follow your drivers' progress on the live map.

> More efficiency

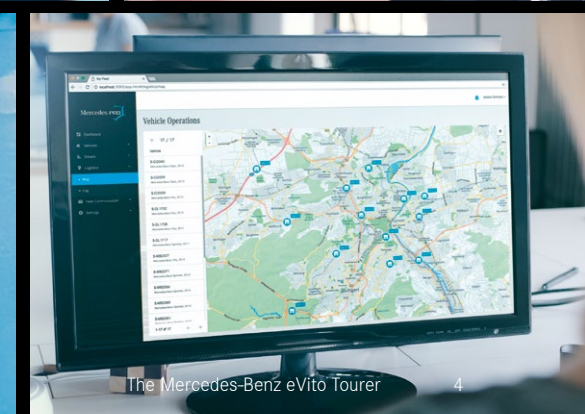
- **Real-time updates on critical parts** – sent to you and your preferred Dealer, encouraging proactive maintenance, repair and servicing reminders.
- **Remotely monitor battery charge levels, range and completion of charging via mobile devices** – encourages more efficient driving and helps drivers plan charging times to minimise downtime.
- **Pre-heat or cool the vehicle while charging using the app** to conserve the battery and maximise driving range.
- **Plan the quickest, most range-efficient journeys** – send real-time route information and updates remotely to drivers via SMS, increasing efficiency and reducing admin time.
- **Trip logs/management** – digitally record individual driver journeys and easily separate of business and private miles.

> Arrange a demonstration at your nearest Dealership

> Download the Mercedes PRO connect brochure to find out more

†For a full list of exclusions and all product terms please visit mbvans.co.uk/mobilovan

*Mercedes PRO connect includes a range of digital services, free for 2 years, to help manage your electric vehicle. Vehicles which are set-up and activated after 1 December 2020 will not be available with the following services: Eco Monitor, Drive Style monitor, Data Interfaces, Digital Trip Management, Internet In The Van or Fleet Communication. Please check with your local Dealer for the full scope of services available with your vehicle.



The eVito Tourer PRO.

Features include:

Interior

- Charging cable, mode 3 (type 2, 3x32A), 8m
- Double co-driver seat
- Six-way adjustable drivers seat
- Driver and co-driver airbag
- Leather, multifunctional steering wheel
- Locking glovebox
- TEMPMATIC air conditioning

Exterior

- 17" light alloy wheels
- Door tailgate
- Heated, electrically adjustable mirrors
- Tinted window glass
- Twin sliding doors

Safety, security and connectivity

- Active Brake ASSIST
- ATTENTION ASSIST
- Audio 30 with DAB radio, Apple / Android Car Play
- Cruise control
- Headlight assistant
- Mercedes PRO connect (via an App)
- Rain sensor

From £51,950[^]

[^]Based on an eVito Tourer L2 PRO

• 2 lengths available • Charging times[†]

L2: 5,140mm
L3: 5,370mm

AC: 0-100% - 10 hours using the Wallbox Type 2: (2 x 16A | 11kW)
DC: 10-80% - 40 min using rapid charging DC 110kW

➤ [Arrange a test drive at your nearest Dealership](#)



[†]Charging times are subject to the power available at the location where the vehicle will be charged as well as factors such as temperature and type of cable used. Time stated is based on 7.4/80 KW power available.

eVito Tourer overview

Mercedes PRO connect

eVito Tourer PRO

eVito Tourer SELECT

Equipment

Battery and eMotor

Range and emissions

Weights and payloads

Dimensions

List prices

EQ Ready App

The eVito Tourer SELECT.

Features include:

Interior

- Charging cable, mode 3 (type 2, 3x32A), 8m
- Double co-driver seat
- Six-way adjustable drivers seat
- Driver and co-driver airbag
- Leather, multifunctional steering wheel
- Locking glovebox
- TEMPMATIC air conditioning

Exterior

- 17" light alloy wheels
- Door tailgate
- Heated, electrically adjustable mirrors
- Tinted window glass
- Twin sliding doors

Safety, security and connectivity

- Active Brake ASSIST
- ATTENTION ASSIST
- Audio 30 with DAB radio, Apple / Android Car Play
- Cruise control
- Headlight assistant
- Mercedes PRO connect (via an App)
- Rain sensor

Additional features included with the SELECT:

- Armrests for passengers
- Chrome grille
- Chrome interior package
- Comfort bench seat 1st and 2nd passenger row
- Comfort (eight-way adjustable) driver's seat
- Front and rear coloured bumpers
- Seat rail system

From £54,030[^]

[^]Based on an eVito Tourer L2 SELECT

• 2 lengths available • Charging times[†]

L2: 5,140mm AC: 0-100% - 10 hours using the Wallbox Type 2: (2 x 16A | 11kW)
L3: 5,370mm DC: 10-80% - 40 min using rapid charging DC 110kW

➤ [Arrange a test drive at your nearest Dealership](#)

[†]Charging times are subject to the power available at the location where the vehicle will be charged as well as factors such as temperature and type of cable used. Time stated is based on 7.4/80 KW power available.



Image shows upgraded 17" 5-twin spoke alloy wheels (Code R1N), LED Intelligent Light System (LG2), Roof Rails (D12), Privacy Glass (W70).



The Mercedes-Benz eVito Tourer 6

Colours and upholstery.

Solid paints



Arctic white
(Standard on the Vito Tourer
PRO and SELECT)



Pebble grey



Jupiter red



Navy blue



Granite green

Metallic paints



Hyacinth red



Brilliant silver



Obsidian black



Cavansite blue

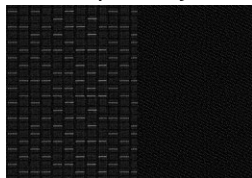


Dark Graphite grey



Selenite grey

Interior upholstery



Black Caluma seat upholstery
(Standard on the eVito Tourer
PRO and SELECT)



Black leatherette seat upholstery

➤ [For paint pricing, see page 9](#)

➤ [For upholstery pricing, see page 12](#)

Equipment (standard and optional overview).



Every eVito Tourer model comes with a host of standard features, plus a range of optional equipment and packages you can add to enhance your van.

Key: ● Standard ○ Optional ◇ Equipment dependant option available – Not available

Equipment	Description	Option code	PRO	SELECT	Basic Price exc. VAT	Basic Price inc. VAT
Upgrade packages						
Comfort	Bunk package Includes a folding 3-seater bench in the rear, which can be folded into an occasional bed with integrated drawers. The bed measures approx. 2.03 x 1.35m for compact models and 1.93 x 1.35m in the long version. The 3-seater bench has integrated three-point seat belts, and ISOFIX attachments Top Tether for all 3 seats. The following options will also be added: Comfort seats, front (SB1+SB2), Seat rail system with quick-locking (UR1), Santiago black fabric (VY4), Comfort overhead control panel (LC4) and Privacy glass, rear (W70); only available for L1 models.	V9B	○	○	Please speak to your local Dealer for more information	
	Table package Table package (V9A) must always be in conjunction with Bunk package (V9B). The following options will also be added: Folding table (YE2), 12V plug socket in rear (ES2), 2 detachable cup holders in armrests (FG9), Stowage nets on seat backrests (SZ7 / SZ8), 3-seater bench as luxury bunk, 2nd rear seat row (US3), Santiago black fabric (VY4), Black shaded glass in rear (W70).	V9A	○	○	£580.00	£696.00
Mirrors	Mirror package The Vito Mirror package uses automatically dimming mirrors and electrically folding outside mirrors to increase the driving comfort and driving safety.	FP2	○	○	£340.00	£408.00
Parking	Parking package Includes Active parking ASSIST (JA7) and reversing camera (FR8). The vehicle automatically parks in 'parallel' and 'bay' parking spaces. Steering is carried out automatically: The driver only has to control the accelerator, brake, and gears. In conjunction with automatic transmission. Active Parking ASSIST also takes care of braking.	EZ5	○	○	£1,010.00	£1,212.00
Safety	Active safety package Includes the following safety assistance systems: - Blind Spot ASSIST (JA7) - Lane Keeping ASSIST (JW5) - Headlamp ASSIST (LA2) automatically switches the dipped beams on and off.	JP2	○	○	£815.00	£978
Security	Anti-theft protection package Thatcham category 1 approved. Includes cab interior and load-space monitoring with double locks, battery back-up siren and tow-away protection as standard on all Vito models.	FY1	○	○	£320.00	£384.00
Trim and Upholstery	Chrome interior appointments package The chrome interior package further enhances the look of the driver's and front-passenger's area with its trim elements on the dashboard and in the front doors.	FP4	○	●	£125.00	£150.00

Changes to individual option availability and combinations may occur depending on vehicle specification choices and the continuing evolution and adaptation of our product range. These changes may not be immediately reflected in this document as they occur, but will be introduced at the next revision opportunity.

Equipment (standard and optional overview).

Equipment	Description	Option code	PRO	SELECT	Basic Price exc. VAT	Basic Price inc. VAT
Exterior Features						
Bodywork	Carrier bars	D15	○	○	£150.00	£180.00
	Chrome radiator grille Only available in conjunction with painted bumpers (CM2).	FK2	○	●	£110.00	£132.00
	Roof rails Maximum load of 150kg, when supported by three carrier bars.	D12	○	○	£380.00	£456.00
Doors	Electrically operated side loading doors Not available in conjunction with sliding windows (W18+W19).	T55 + T56	○	○	£980.00	£1,176.00
	Twin rear doors Open up to 180°.	W50	○	○	£220.00	£264.00
	Tailgate	W65	●	●	£0.00	£0.00
Paint	Pre-treated bumpers The pre-treated surfaces facilitate the painting of the bumpers in the desired colour at a later date.	CM3	○	-	£115.00	£138.00
			-	○	£0.00	£0.00
	Colour-coded front and rear bumpers	CM2	○	●	£315.00	£378.00
	Metallic or non-metallic optional paint colour See page 7 for the range of colours available, or speak to your local Mercedes-Benz Van Dealer.	/	○	○	£565	£678
Roof	Panoramic glass sunroof Only available for L2 models with electric rear windows (W32).	D34	○	○	£2,335.00	£2,802.00
Tyres	Comfort tyres Available for 17 + wheels	RM4	●	●	£0.00	£0.00
Wheels	17" Alloy wheels (5-twin spoke) Wheel: 7.0 J x 17 ET 51 Tyres: 225/55 R17 (RG1)	R1N	○	○	£1,225.00	£1,470.00
	17" Alloy wheels (20-spoke) Wheel: 7 J x 17 ET 51 Tyres: 225/55 R17 tyres (RG7) Standard on SELECT 119 engine.	RK8	●	●	£0.00	£0.00

● Standard ○ Optional ◇ Equipment dependant option available - Not available

Equipment (standard and optional overview).

Equipment	Description	Option code	PRO	SELECT	Basic Price exc. VAT	Basic Price inc. VAT
Wheels	18" Alloy wheels (5-spoke) Wheel: 7.5 J x 17 ET 52 Tyres: 225/55 R18 tyres (RH4)	R1P	○	○	£1,685.00	£2,022.00
	18" Alloy wheels (5-twin spoke) Wheel: 7.5 J x 18 ET 52 Tyres: 245/45 R18 tyres (RH4)	R10	○	○	£1,685.00	£2,022.00
Interior Features						
Flooring	Front carpets	V44	○	●	£45.00	£54.00
	Rear carpets	V33	○	●	£80.00	£96.00
	Velour floor mats The black velour floor mats visually enhance the cockpit and underscore the elegant, sporty wellness ambience in the vehicle.	VL2	○	○	£45.00	£54.00
Heating and Ventilation	Electrical auxiliary demister heating elements The electric heater booster ensures a stronger and faster heating output for the vehicle interior in low outside temperatures when the engine is cold.	HZ0	●	●	£0.00	£0.00
	TEMPMATIC air-conditioning Semi-automatic temperature control including outside air temperature display.	HH9	●	●	£0.00	£0.00
	Rear TEMPMATIC air-conditioning Only available in conjunction with TEMPMATIC air-conditioning (HH9) or THERMOTRONIC climate control (HH4).	HZ7	○	○	£735.00	£882.00
	THERMOTRONIC climate control Automatic climate control including air-conditioning and outside air temperature display for Tourer PRO models.	HH4	○	○	£700.00	£840.00
Seating	Comfort driver's seat Comfort driver seat with inboard armrest and 4-way adjustable headrest.	SB1	○	●	£110.00	£132.00
	Comfort co-driver's seat Comfort driver and co-driver seat with inboard armrests and 4-way adjustable headrests. This deletes the double co-driver seat and therefore limits the cab area to two occupants.	SB2	○	-	£85.00	£102.00
	Comfort bench seat 1st passenger row Removable comfort bench seat with tilting/removable outer seat and outer armrests. Backrests are individually adjustable for recline angle. The bench has a two section seat cushion and a three section backrest and can also be folded into the package position to create additional cargo space. Not available in conjunction with Dual co- driver seat (S23) for crew van models.	US4	○	●	£340.00	£408.00

● Standard ○ Optional ◇ Equipment dependant option available - Not available

Equipment (standard and optional overview).

Equipment	Description	Option code	PRO	SELECT	Basic Price exc. VAT	Basic Price inc. VAT
Seating	Comfort bench seat 2nd passenger row Removable comfort bench seat with tilting/removable outer seat and outer armrests. Backrests are individually adjustable for recline angle. The bench has a two section seat cushion and a three section backrest and can also be folded into the package position to create additional cargo space. Only available in combination with Comfort bench seat 1st passenger row (US4).	US5	○	●	£340.00	£408.00
	Comfort bench seat 2nd passenger row as luxury bunk	US3	○	○	£340.00	£408.00
	Single co-driver's seat Includes automatic seat belt recognition and airbag deactivation function.	S09	●	○	£0.00	£0.00
	Dual co-driver's seat	S23	●	●	£0.00	£0.00
	Electrically adjustable driver's seat	SF1	○	-	£1,065.00	£1,278.00
			-	○	£975.00	£1,170.00
	Electrically adjustable co-driver's seat	SF2	○	-	£1,065.00	£1,278.00
			-	○	£975.00	£1,170.00
	Heated driver's seat	H16	○	○	£145.00	£174.00
	Heated co-driver's seat	H15	○	○	£140.00	£168.00
	Heated driver's and co-driver's seats (combined) Not available in conjunction with dual co-driver seat (S23).	H16 H15	○	○	£280.00	£336.00
	Lumbar support, driver's seat Only available in conjunction with comfort seat (SB1/SB2) or comfort seats, electronically adjustable (SF1/SF2). Not available with leatherette trim (VU9).	SE5	○	○	£105.00	£126.00
	Lumbar support, co-driver's seat Only available in conjunction with comfort seat (SB1/SB2) or comfort seats, electronically adjustable (SF1/SF2). Not available with leatherette trim (VU9).	SE4	○	○	£105.00	£126.00
	Seat rail system Allows adjustable seating bench positions. Only available in conjunction with comfort bench seats (US4 and US5).	UR1	○	●	£525.00	£630.00
Steering Wheel	Multifunctional leather steering wheel Height and rake adjustable.	CL3	●	●	£0.00	£0.00

● Standard ○ Optional ◇ Equipment dependant option available - Not available

Equipment (standard and optional overview).

Equipment	Description	Option code	PRO	SELECT	Basic Price exc. VAT	Basic Price inc. VAT
Storage	2 detachable cup holders, in rear armrests	FG9	○	○	£45.00	£54.00
	Armrests for crew/passenger compartment Fitted to the outer side of the crew/passenger compartment bench seat.	U73	○	●	£65.00	£78.00
	Footwell centre console with stowage compartment Not available in conjunction with dual co-driver seat (S23).	FF1	○	○	£65.00	£78.00
	Footwell centre console with 1-DIN slot Not available in conjunction with dual co-driver seat (S23). Note blanking plate for 1-DIN slot not included.	FF2	○	○	£65.00	£78.00
	Parcel shelf The load compartment shelf creates a second stowage space that makes the load compartment flexible and enables convenient loading and unloading.	YG4	○	○	£535.00	£642.00
	Stowage net on driver's seat backrest	SZ7	○	○	£25.00	£30.00
	Stowage net on co-driver's seat backrest	SZ8	○	○	£25.00	£30.00
Table	Folding table The practical, flexibly adjustable folding table offers passengers a flat table surface for working, eating or playing.	YE2	○	○	£535.00	£642.00
Trim and upholstery	Black Caluma seat upholstery Breathable and hardwearing.	VF4	●	●	£0.00	£0.00
	Black leatherette seat upholstery Not available with swivelling Comfort Seats (SB5 and SB6).	VU9	○	○	£150.00	£180.00
Technology, Software and Electrics						
Audio	Audio 30 7.8 cm (7 inch) touchscreen DAB+ radio includes Smartphone Integration via Apple® CarPlay and Android Auto and also the Bluetooth® interface with audio streaming and hands-free function for making phone calls while driving with minimal distraction. Includes 2 USB ports.	E3C	●	●	£0.00	£0.00
	Audio 40 7.8 cm (7 inch) touchscreen DAB+ radio with integrated Navigation. Includes Smartphone Integration via Apple® CarPlay and Android Auto and Bluetooth® interface with audio streaming and hands-free function for making phone calls while driving with minimal distraction. Includes 2 USB ports.	EA4	○	○	£660.00	£792.00
Battery	Heavy duty battery Upated with 95Ah. Standard for 114CDI, 116CDI and 119CDI models.	ED4	●	●	£115.00	£138.00

● Standard ○ Optional ◇ Equipment dependant option available – Not available

Equipment (standard and optional overview).

Equipment	Description	Option code	PRO	SELECT	Basic Price exc. VAT	Basic Price inc. VAT
Charging	Charging cable, mode 3 (type 2, 3x20A), 5m	E3K	○	○	£285.00	£342.00
	Charging cable, mode 3 (type 2, 3x32A), 4m	E3L	○	○	£405.00	£486.00
	Charging cable, model 3 (type 2 3x32A) 8m	E9L	●	●	£0.00	£0.00
Electrical	Parameterisable special module (PSM) Facilitates programming of special vehicle functions. Please speak to your Mercedes-Benz Vans Dealer for more information.	ED5	○	○	£285.00	£342.00
	12V Plug socket in trunk / load compartment	ES2	○	○	£50.00	£60.00
Keys	Additional vehicle keys with remote function Four keys are supplied with the vehicle in total.	FZ9	○	○	£105.00	£126.00
Drivers Assistance and Safety						
Airbags	Driver's thorax airbag	SH1	●	●	£0.00	£0.00
	Co-driver's thorax airbag Becomes standard with removal of S23 Double Co-driver seat	SH2	○	○	£0.00	£0.00
	Window airbags Fitted for driver and co-driver, from A-pillar to B-pillar.	SH9	●	●	£0.00	£0.00
	Window airbags, A-D-pillar Available for Tourer in L2 vehicle length.	SH8	○	○	£410.00	£492.00
Drivers Assistance	Active Brake ASSIST Can detect the danger of a collision with the vehicle ahead, stationary traffic and pedestrians by reacting with a visual and audible warning-braking automatically if there is no driver reaction.	BA3	●	●	£0.00	£0.00
	Active Distance ASSIST DISTRONIC Automatically maintains the distance to vehicles in front. The system accelerates the vehicle by itself and brakes it with a maximum of half the vehicle's braking power in order to maintain a safe distance.	ET4	○	○	£805.00	£966.00
	Attention ASSIST ATTENTION ASSIST function can detect typical signs of drowsiness and warn the driver.	JW8	●	●	£0.00	£0.00
	Blind Spot ASSIST Blind Spot ASSIST can help prevent accidents when changing lanes, for example on the motorway.	JA7	○	○	£440.00	£528.00

● Standard ○ Optional ◇ Equipment dependant option available – Not available

Equipment (standard and optional overview).

Equipment	Description	Option code	PRO	SELECT	Basic Price exc. VAT	Basic Price inc. VAT
Drivers Assistance	Comfort overhead control panel LED interior lighting including cab downlighting and co-/driver reading lamps; also includes a convenient spectacles compartment.	LC4	●	●	£0.00	£0.00
	Cruise control	MS1	●	●	£0.00	£0.00
	Headlight assistant Automatically switches the vehicle lighting between daytime-running lights and low beam headlights.	LA2	●	●	£0.00	£0.00
	Lane Keeping ASSIST Warns the driver if lane markings are crossed unintentionally.	JW5	○	○	£440.00	£528.00
	Linear speed limiter 140km/h	MJ3	●	●	£0.00	£0.00
	Linear speed limiter 160km/h	MK9	○	○	£0.00	£0.00
	Rain sensor The rain sensor automatically regulates the wiping frequency of the windscreen wipers with activated intermittent wiping, which makes things easier for the driver. Includes headlight assistant (LA2) and heat insulating glass (H20).	JF1	●	●	£0.00	£0.00
Parking	Reversing camera	FR8	○	○	£480.00	£576.00
Safety Equipment	First aid kit	Y10	○	○	£0.00	£0.00
	Fire extinguisher 1kg	YF7	○	○	£120.00	£144.00
	PRE-SAFE The PRE-SAFE® anticipatory occupant protection system can detect critical driving situations at an early stage and initiate preventive protection measures.	JP1	○	○	£325.00	£390.00
	Warning triangle	Y44	○	○	£35.00	£42.00
Lighting	Blinker lights on rear of roof The additional turn signal lamps on rear of roof improve the visibility of the vehicle, thus enhancing perceptual safety.	L84	○	○	£135.00	£162.00
	Halogen front fog lights Not available for vehicles fitted with LED Intelligent Light System (LG2).	L16	○	○	£195.00	£234.00
	Illuminated vanity mirror in sun visors	FS5	●	●	£95.00	£114.00
	Interior and ambient lighting	LP2	○	●	£220.00	£264.00

● Standard ○ Optional ◇ Equipment dependant option available – Not available

Equipment (standard and optional overview).

Equipment	Description	Option code	PRO	SELECT	Basic Price exc. VAT	Basic Price inc. VAT
	LED Intelligent Light System Automatically adapts light intensity appropriately to weather, lighting and speed. Integrated High Beam Assist automatically adjusts the high and low beam to the traffic situation. The cornering function automatically pivots headlamps and illuminates static LED cornering lights into upcoming bends to ensure maximum visibility. Includes Rain sensor (JF1), Headlight assistant (LA2), Heat insulating glass (H20).	LG2	○	○	£1,515.00	£1,818.00
	Lights in grab handle in rear	LC3	○	-	£55.00	£66.00
Loading and Towing						
Gross Vehicle Weight (GVW)	Gross Vehicle Weight 3.5T	X16	●	●	£0.00	£0.00
Mirrors and Windows						
Mirrors	Electrically folding door mirrors Only available in conjunction with Electrically heated and adjustable door mirrors (F68).	F64	○	○	£190.00	£228.00
	Heated, electrically adjustable wing mirrors Mirror heating reduces condensation in cold weather and prevents icing-up of the mirrors. The exterior mirrors are heated automatically upon vehicle start when the outside temperature is low or when the rear defrost function is activated.	F68	●	●	£160.00	£192.00
Windows	Black-tinted windows in rear 90% window tint offers attractive thermal and privacy protection. Applies to all windows after the B-pillar.	W70	○	○	£480.00	£576.00
	Convenience opening and closing Convenience opening and closing of the front windows via remote central locking.	FZ8	○	○	£35.00	£42.00
	C-D pillar windows Includes tinted glass-lightly tinted, green (H20).	W29	●	●	£200.00	£240.00
	C-D pillar windows, electrically opening	W32	○	○	£320.00	£384.00
	Heat-insulating glass Windscreen (lamine glass), side windows and rear window (single-pane safety glass) are tinted green, reducing the sunlight's heating effect on the interior.	H20	●	●	£135.00	£162.00

● Standard ○ Optional ◇ Equipment dependant option available - Not available

Charging options – maximise range and reduce downtime.

➤ The eVito Tourer can be charged via Direct Current (DC) and Alternating Current (AC).

The DC option offers speed, while AC is more cost effective for overnight charging. DC is available at most UK service stations and will charge your vehicle faster but requires more energy to do so.

- DC 110kW - 80% rapid charge in 40 minutes†

AC requires longer intervals to fully charge but uses less energy:

- AC 11kW: 0-100% in 10 hours†

➤ Optimising battery performance.

When you're busy, every mile counts. That's why the eVito Tourer recovers energy when it is decelerating, optimise the vehicle's range. This is called recuperation and you can select 5 different modes via the gearshift paddles. The greater the recuperation, the faster you decelerate when you let off the accelerator and the more energy the vehicle regenerates.

D-- This mode is designed to get maximum range from your eVito Tourer. With the fastest deceleration, it recovers the most energy. As the deceleration is so strong, your brake lights will be automatically activated.

D- When you ease off the accelerator in D-, your vehicle will slow down less quickly and recover a little less energy than D--. Generally, this mode will activate your brake lights.

D This mode is good for faster paced traffic traveling at a relatively constant speed and the vehicle returns to D every time you start the motor. It has a gradual deceleration feel – like putting a diesel vehicle into a lower gear. Some energy is recovered, but not as much as D-. Brake lights are generally not automatically activated in this mode.

D+ This is a sailing mode, meaning your vehicle will decelerate naturally – like coasting to a stop in a diesel vehicle. No energy is recovered into the battery. It is useful on long downhill sections of main roads, as you will be able to 'sail' with no drag from the electric motor.

D Auto With a long pull of either paddle shifter, the intelligent mode D Auto is activated. It uses a radar sensor and navigation data to automatically adjust the recuperation level to the traffic situation – so you don't have to.

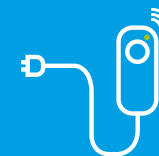
†Charging times are subject to the power available at the location where the vehicle will be charged as well as factors such as temperature and type of cable used. Time stated is based on 7.4/80 KW power available.

*Subject to eligibility. Terms and conditions apply. Please speak to your preferred eReady Dealer for more information.



Free Smart Charge Point available*

We'll install a NewMotion Home Fast Smart charge point at your home for smart, safe and convenient charging.



Battery and eMotor.

	eVito Tourer PRO	eVito Tourer SELECT
Fuel	Electricity	
eMotor output, max.	150kW (Temporary) 70kW (Long run)	
	204hp	
Combined WLTP ranges	221miles (356 km/h)*	221miles (356 km/h)*
Torque, max.	362Nm	
Driven Axle	Front	
Battery Composition	Lithium Ion	
Battery Capacity	100kWh (90kWh useable)	
Battery Voltage	365	
Battery Charging Power	AC: 11kW / DC: 110 kW	
Battery Charging Time	AC 0-100% -10 hours / DC 0-80% - 40 min**	
Charging cable	8m long - Type 2, 3x32A Other cables available - please see page 13	

*Electrical WLTP range for the eVito Tourer models range in miles (Km): combined 218 (350) – 221 (355). Electrical consumption in kWh/100 km: combined 25.1 – 25.4. CO₂ emissions in g/km (combined): 0. Figures correct as of August 2020. For real time data visit https://voc.i.daimler.com/voc/gb_en.
 **Charging times are subject to the power available at the location where the vehicle will be charged.

Range, performance and CO₂ emissions.

			WLTP Range (Miles)						WLTP Range (Km)					
Model	Speed Limiter	CO ₂ emissions (g/km)	Combined	Low (Extra Urban)	Low-Medium	Medium (Urban)	High (Rural)	Extra High (Motorway)	Combined	Low (Extra Urban)	Low-Medium	Medium (Urban)	High (Rural)	Extra High (Motorway)
Tourer - PRO														
eVito Tourer L2	140km/h	0	221	373	302	272	247	175	356.0	600	486	438	397	282
eVito Tourer L3	140km/h	0	221	367	299	270	246	175	355.0	590	481	435	396	281
Tourer - SELECT														
eVito Tourer L2	140km/h	0	218	354	293	266	243	174	352.0	571	472	429	392	280
eVito Tourer L3	140km/h	0	217	349	290	265	243	173	350.0	561	467	427	391	279

			Energy Consumption (WLTP) kWh/100km					
Model	Speed Limiter	CO ₂ emissions (g/km)	Combined	Low (Extra Urban)	Low-Medium	Medium (Urban)	High (Rural)	Extra High (Motorway)
Tourer - PRO								
eVito Tourer L2	140km/h	0	28.1	18.3	21.1	22.9	25.2	35.4
eVito Tourer L3	140km/h	0	28.2	18.6	21.3	23.1	25.3	35.5
Tourer - SELECT								
eVito Tourer L2	140km/h	0	28.4	19.3	21.7	23.4	25.5	35.7
eVito Tourer L3	140km/h	0	28.5	19.6	21.9	23.5	25.6	35.8

The indicated values were determined according to the prescribed measurement method – Worldwide Harmonised Light Vehicle Test Procedure (WLTP). Figures shown may include options which are not available in the UK. For Battery Electric Vehicles (BEV) figures determined with battery fully charged. The Mercedes-Benz eVito Tourer requires mains electricity for charging. Figures shown are for comparability purposes; only compare consumption, CO2 and electric range figures with other vehicles tested to the same technical procedures. Figures may not reflect real life driving results, which will depend upon a number of factors including the starting charge of the battery, factory-fitted options, accessories fitted (post registration), variations in weather, driving styles and vehicle load. Zero emissions while driving. Further information about the test used to establish figures can be found at <http://www.mercedes-benz.co.uk/WLTP>

Weights and payloads.

Model	Gross Vehicle Weight (Kg)	Unladen Weight (Kg)	Payload (Kg)	Gross Train Weight (Kg)
Tourer - PRO				
eVito Tourer L2	3,500	2,759	741	3,500
eVito Tourer L3	3,500	2,784	716	3,500
Tourer - SELECT				
eVito Tourer L2	3,500	2,835	665	3,500
eVito Tourer L3	3,500	2,860	640	3,500

Please note: The stated payload weights are correct according to type approval data. The specific payload values for UK supplied vehicles may differ. The figure quoted only accounts for equipment which is included in the UK product offer as standard. Please speak to a dealer for final vehicle configurations and weights once all options and accessories have been added.

Dimensions.

eVito Tourer L2		
Wheelbase	Wheelbase length	3,200mm
	Turning circle	12.2m
	Track circle	12.9m
	Front track width	1,662mm
	Rear track width	1,650mm
Vehicle	Length	5,140mm
	Height (unladen)	1,934mm
	Width (inc. wing mirrors)	2,244mm
	Ground clearance	350mm
Load compartment	Length	464mm
	Max. width	1,337mm
	Width between wheel arches	1,205mm
	Height	1,195mm



*Measured on vehicle floor and includes 370mm for the space beneath the front seats.

Dimensions.

eVito Tourer L3		
Wheelbase	Wheelbase length	3,420mm
	Turning circle	13m
	Track circle	13.7m
	Front track width	1,662mm
	Rear track width	1,650mm
Vehicle	Length	5,370mm
	Height (unladen)	1,934mm
	Width (inc. wing mirrors)	2,244mm
	Ground clearance	350mm
Load compartment	Length	654mm
	Max. width	1,337mm
	Width between wheel arches	1,205mm
	Height	1,195mm



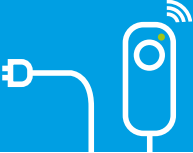
*Measured on vehicle floor and includes 370mm for the space beneath the front seats.

List prices.

Model	Drive	Basic Recommended Retail Price (Ex. VAT)	Basic Recommended Retail Price (Inc. VAT)
Tourer - PRO			
eVito Tourer L2	FWD	£51,950	£62,340
eVito Tourer L3	FWD	£52,470	£62,964
Tourer - SELECT			
eVito Tourer L2	FWD	£54,030	£64,836
eVito Tourer L3	FWD	£54,550	£65,460

Free Smart Charge Point available*

We'll install a NewMotion Home Fast Smart charge point at your home for smart, safe and convenient charging.



*Subject to eligibility. Terms and conditions apply. Please speak to your preferred eReady Dealer for more information.

This document is for guidance only and must be used in conjunction with a configuration tool prior to final specification decisions and vehicle quotations being prepared and accepted. List prices are quoted ex-factory unless otherwise stated. Delivery charges excluding VAT will be added to model prices quoted in this document. Prices based on standard finish paint choice. Mercedes-Benz Vans UK and authorised Dealers reserve the right to alter specification and vary prices without notice. The availability of options may depend on the chosen base vehicle and other optional equipment specified, and should be confirmed with your Mercedes-Benz Vans Dealer prior to order placement. VAT is calculated at the standard rate of 20%. Mercedes-Benz Vans UK Ltd, Tongwell, Milton Keynes, MK15 8BA.

The EQ Ready App.

Are you #eReady?

We know that not every business is ready to go electric – but if you want to find out whether it's right for you, the EQ Ready app is here to help. Take a free virtual test drive and analyse your electric driving potential using your current van, with no obligation and no pressure to make the switch.

- Easily simulate electric driving in your current van.
- Analyse your driving distances and behaviours to get a clear picture of your virtual range and the battery capacity you'd need.
- See public charging stations in your area and add private charging points (such as those owned by your employer or family/friends).
- Test your hypothetical battery's consumption at different temperature scenarios, and experiment with load weights for a realistic and detailed assessment.
- Get set up in seconds by downloading the app on Apple or Android now.



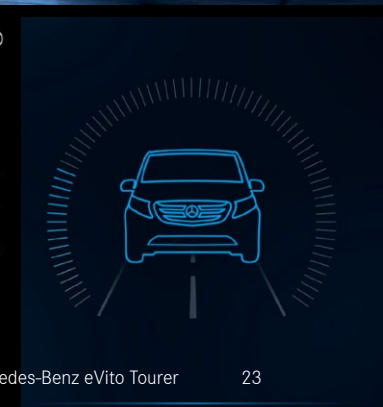
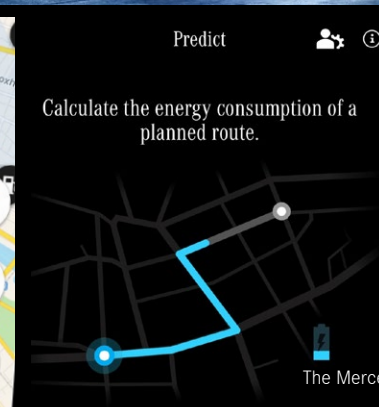
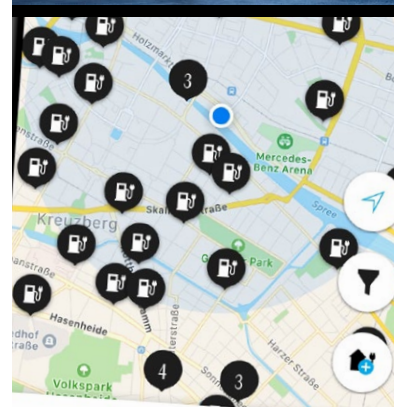
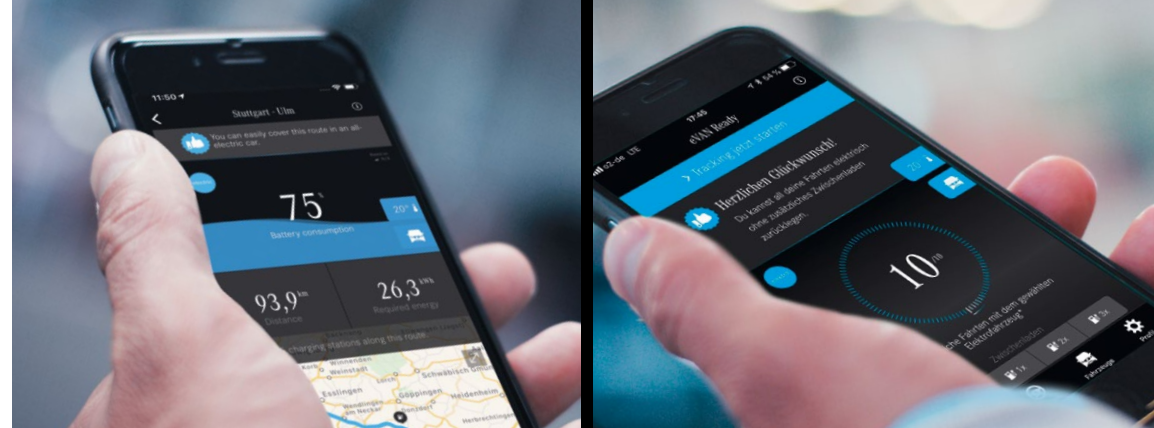
Need further help?

When switching to a brand-new way of keeping your business moving, it's only natural you'll have questions. So, if there's anything you'd like to find out that's not covered in this brochure, then feel free to take a look at:

› [The Mercedes-Benz electric van guide](#)

or if you'd preferred to talk to a Dealer, find the nearest one to you:

› [Find your preferred Dealer](#)



eReady finance – the flexible way to purchase your electric van.

If you're interested in an electric van but the idea of a lengthy finance agreement puts you off, our flexible eReady finance terms start from as little as 12 months. This allows you to make the switch with a level of commitment you feel comfortable with, and with a wide range of options at the end.

- Flexible finance terms available, starting from 12 months
- Love your electric van? You can purchase it at the end of the agreement
- Want to explore your options? Regularly review your finance and vehicle options, then return or part-exchange the van at the end of your contract
- Switch to another electric van in the Mercedes-Benz range when new models become available.

➤ [Learn more about our finance options](#)

or if you'd preferred to talk to a Dealer, find the nearest one to you:

➤ [Find your preferred Dealer](#)



The Mercedes-Benz eVito Tourer

After care.

Keeping Businesses Moving.

The support we provide doesn't end once you've driven away. We offer a number of ways to keep your business moving long into the future.

› Free roadside assistance

The Mercedes-Benz eVito Tourer comes with MobiloVan, our comprehensive roadside assistance cover, available for 24/7 for up to 30 years*. If you misfuel, lose your keys, are involved in a road traffic accident, or if your van is vandalised or won't start, we'll send out a trained technician stocked with Mercedes-Benz GenuineParts. With an average roadside repair rate of 80%, you'll be moving again in no time.

[Find out more about MobiloVan](#)

› 3 year vehicle warranty

Because we want to help keep businesses moving today and in the future, all our new vans come with a free 3 year unlimited mileage warranty.

› 8-year/160,000km battery guarantee

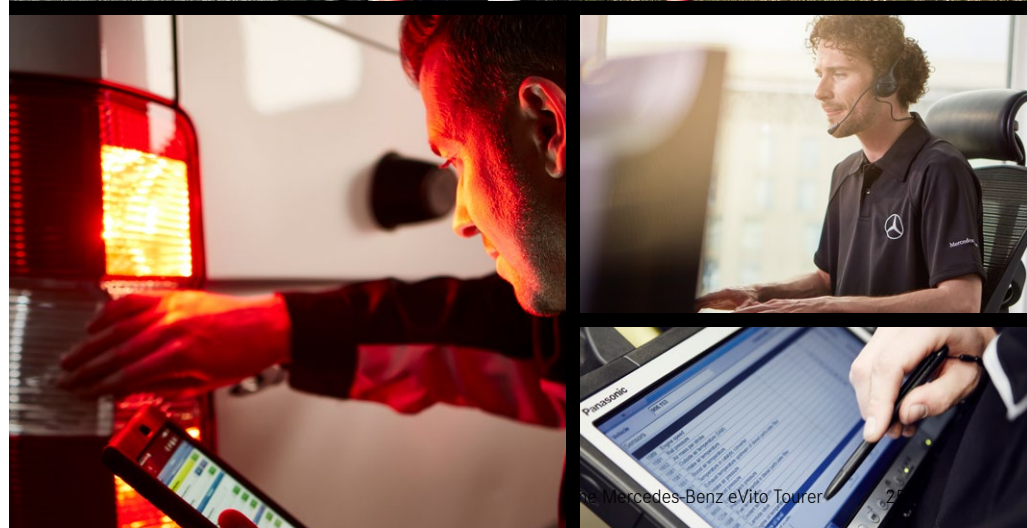
The eVito Tourer's battery benefits from an 8-year, 160,000km guarantee, and an expected battery capacity of at least 70% after 8 years - to keep you moving for longer.

› 24/7 Dealer network

Our nationwide network of approved Dealers is here to help your business maintain momentum. Most Dealers work until midnight and over a third are open 24/7.

[Find out more about our Dealer network](#)

*Free for 3 years initially and renewed at each service, if serviced by MB according to service intervals for up to 30 years. 60 minutes is the average response rate and may differ. For a full list of exclusions and all product terms please visit mbvans.co.uk/mobilovan



eVito Tourer
overview

Mercedes PRO
connect

eVito Tourer PRO

eVito Tourer SELECT

Equipment

Battery and eMotor

Range and
emissions

Weights and
payloads

Dimensions

List prices

EQ Ready App