

ALFA ROMEO CAMPIONARIO COLORI 1972



COLOUR GUIDE

June 1972

BODY COLOURS	INTERNAL TRIM					
	COUPÉ				SPIDER	
	GT JUNIOR 1.3 - 1.6	GT JUNIOR Z	2000 GT VELOCE	MONTREAL	JUNIOR 1.3 - 1.6	2000 VELOCE
WHITE	D-1-3		P-1-13			
INDIGO GREY	D-1		Q-12		4-6	4-6
QUARRY BEIGE	E-1		P-1			
MAROON	D-2		R-13			
DARK BLUE	D-2		R-13			
BEECH	E-2		S-13			
BLACK (on request)	D-2	10	R-13	M	6-7	6-7
YELLOW OCHRE	D-1					
PINE GREEN	E-2		S-13			
FRENCH BLUE	D-2		R-13			
BLUETTE (on request)	D-3					
CHARCOAL GREY (on request)	E-2					
ALFA RED	D-1		P-1			
DARK GREEN (LIGHT)	E-2		R-12			
WHITE					4-6	4-6
IVORY					4-6	4-6
RED					4	4
BLUE					4-6	4-6
BRITISH GREEN					4-7	4-7
YELLOW PROTOTYPE					4	4
METALLIC LIGHT GREY	D-1		P-1-8-9	N	4-6	4-6
METALLIC MEDIUM GREY	E-2		Q-13-8			
METALLIC OLIVE GREEN	E-2		S-12-9			
PIPER YELLOW			P-1			
PLUM VIOLET			R-13			
LE MANS BLUE			S-12			
METALLIC PERVINCA BLUE			S-13-9			
METALLIC LIGHT BEIGE			P-1-8			
WHITE ZAGATO		11				
YELLOW ZAGATO		11				
RED ZAGATO		11				
METALLIC GREY		11				
METALLIC CHAMPAGNE		11				
MEDIUM BLUE		10		L		
GREEN		11		H-I		
GREY				F-G		
RED				G		
ORANGE				G		
METALLIC GOLD				I		
METALLIC ORANGE				G-I		
METALLIC GREEN				I		
METALLIC BROWN				I		
METALLIC SILVER				N		

NOTE: ALPHABETHICAL INDEX FOR CLOTH UPHOLSTERY - NUMERICAL INDEX FOR TEXALFA PVC OR LEATHER - ROMAN NUMBERS FOR VELVET. THE INTERNAL FINISHES WITH TEXALFA EMBOSSED ARE AVAILABLE ONLY FOR THE MODELS 1300 GTA JUNIOR AND 2000 GT VELOCE.

The tonality of the colours is purely indicative. Alfa Romeo reserves the right to any changes in the above colour chart.

COLOUR GUIDE

June 1972

BODY COLOURS	INTERNAL TRIM			
	BERLINE			
	ALFASUD	GIULIA SUPER 1.3 - 1.6	ALFETTA	2000 BERLINA
ALFA RED	18	A-D-1	P-1	I-1
CAPODIMONTE WHITE	15 - 18			
POSILLIPO BLUE	15 - 16			
PONZA BEIGE	16 - 18			
ISCHIA GREEN	15 - 18			
VESUVIO GREY	16 - 17			
PROCIDA BLUE	15 - 16			
WHITE		A-1-3	P-1	I-1-12
INDIGO GREY		A-3	U-14	IV-14
QUARRY BEIGE		B-E-2	T-5	II-12
MAROON		A-2	V-13	II-III-13
DARK BLUE		A-D-2	V-13	II-III-13
BEECK		A-E-2	V-13	II-13
BLACK (on request)		A-2		II-12
YELLOW OCHRE		A-D-1		
PINE GREEN		B-E-2	T-13	II-12
FRENCH BLUE		A-2		II-13
BLUETTE (on request)		C-3		
CHARCOAL GREY (on request)		B-2		
METALLIC LIGHT GREY				II-1-12
METALLIC MEDIUM GREY		B-E-2	T-5	II-12
METALLIC OLIVE GREEN		B-E-2	T-5	II-12
PIPER YELLOW			P-1	I-1
PLUM VIOLET			V-13	II-III-13
LE MANS BLUE			P-13	II-13
METALLIC PERVINCA BLUE			V-13	II-III-13
METALLIC LIGHT BEIGE			P-5	I-12
DARK GREEN (LIGHT)		B-E-2	V-5	II-12

NOTE: ALPHABETHICAL INDEX FOR CLOTH UPHOLSTERY - NUMERICAL INDEX FOR TEXALFA PVC OR LEATHER - ROMAN NUMBERS FOR VELVET. THE INTERNAL FINISHES WITH TEXALFA EMBOSSED ARE AVAILABLE ONLY FOR THE MODELS 1300 GTA JUNIOR AND 2000 GT VELOCE.

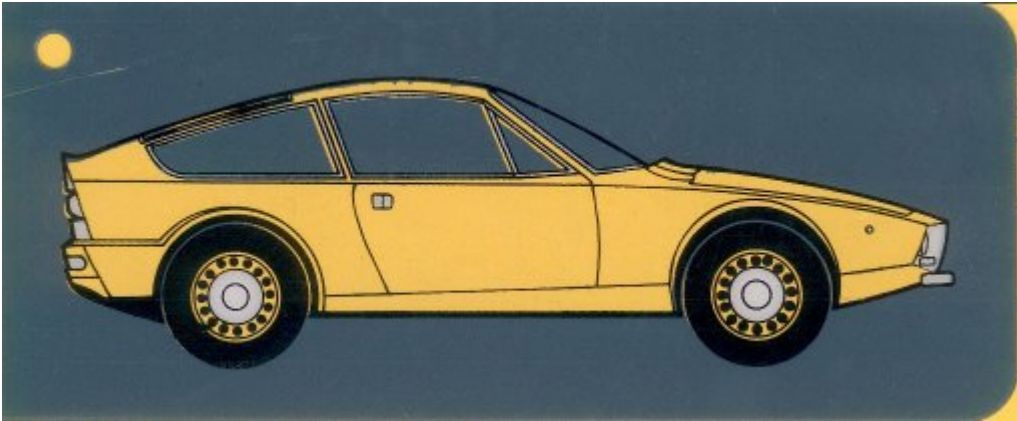
The tonality of the colours is purely indicative, Alfa Romeo reserves the right to any changes in the above colour chart.

The Car Silhouettes

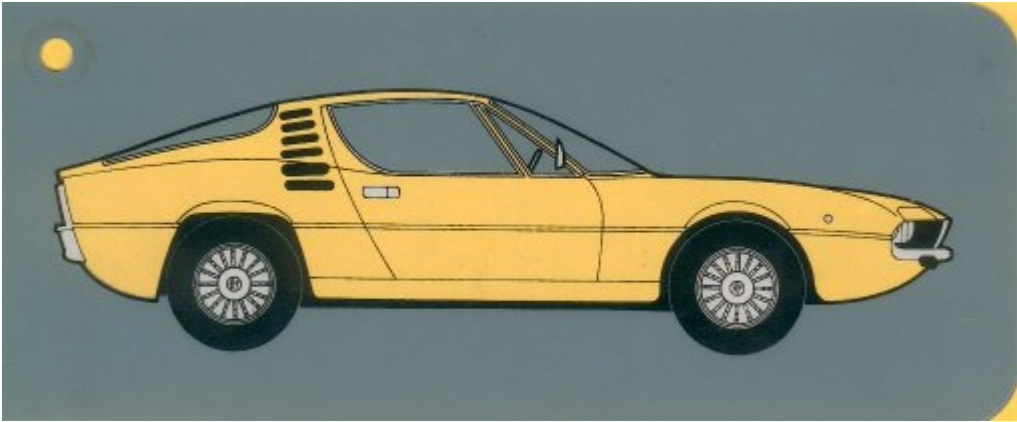
Coupe: GT Junior and GTV



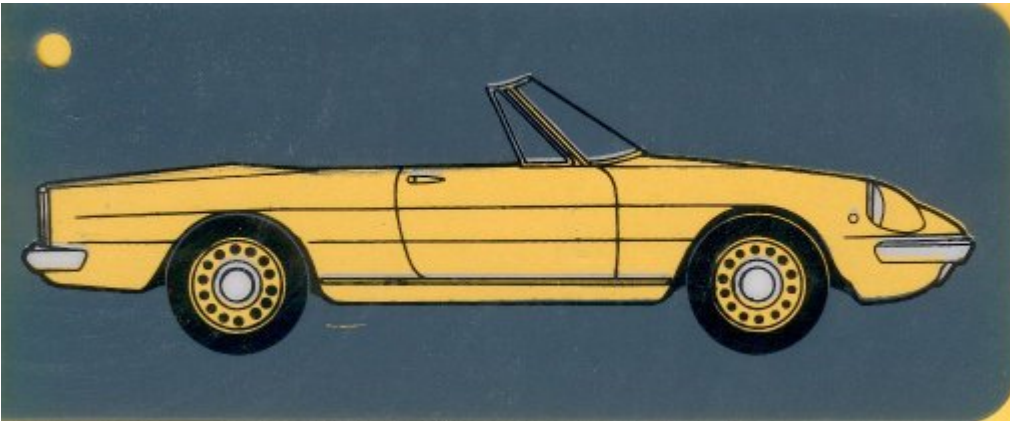
Coupe: Junior Zagato



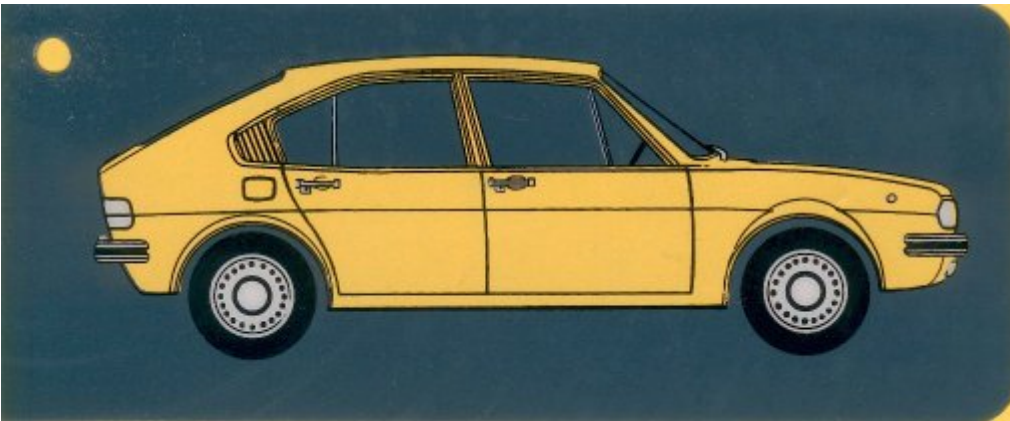
Coupe: Montreal



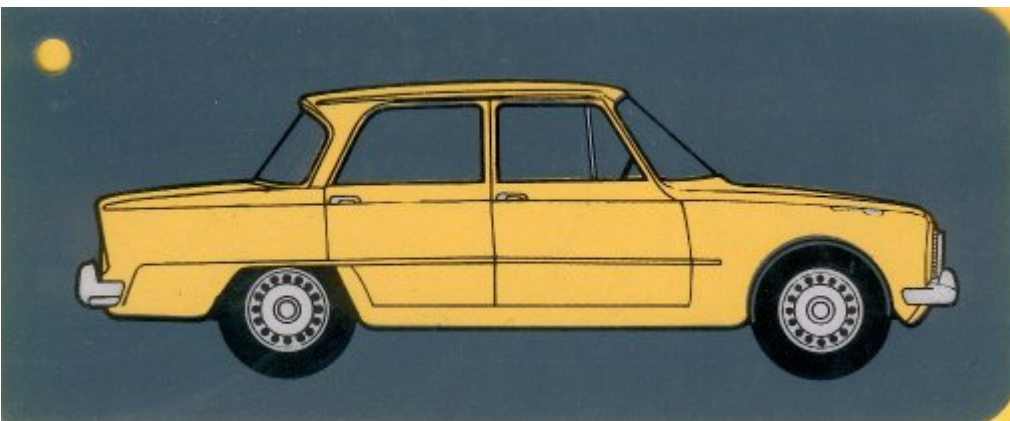
Spider: 1.3-1.6 and 2000 Spider Veloce



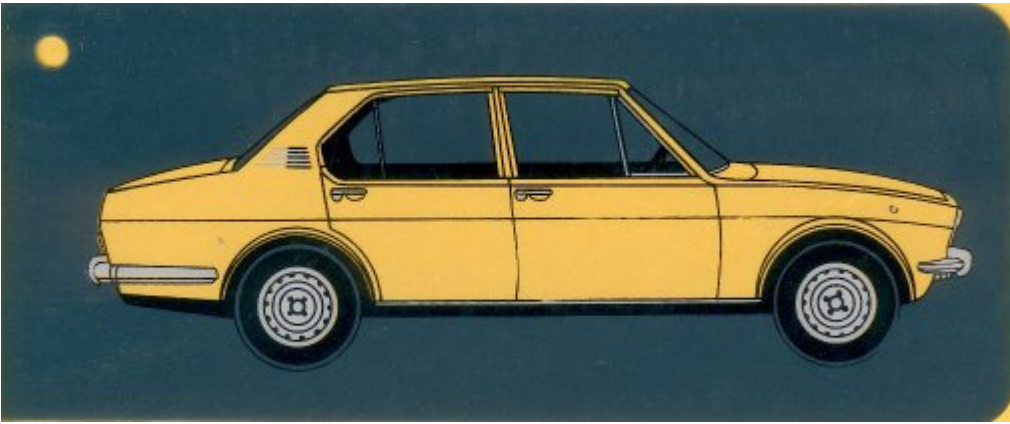
Berlina: Alfesud



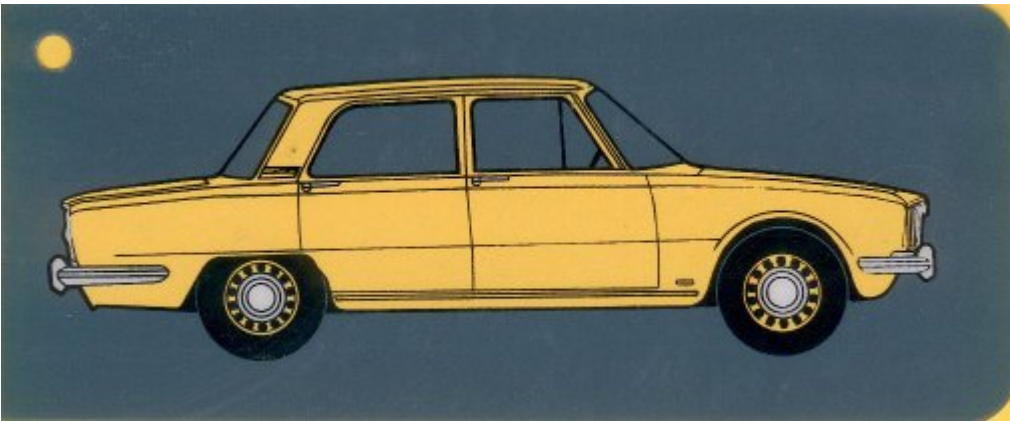
Berlina: Giulia Super



Berlina: Alfetta



Berlina: 2000 Berlina



Biancospino

Paint Name (I/E/F/D): Biancospino / White / Blanc cassé / Weissdorn

Paint Code(s): AR-001, AR-013

a.k.a: Ermine White on 1971 105.51 and 105.71 cars.



Grigio Indaco

Paint Name (I/E/F/D): Grigio Indaco / Indigo Grey / Gris Indigo / Blaugrau

Paint Code(s): AR-735, AR-753

a.k.a: Misty Grey on 1971 105.51 and 105.71 cars.



Beige Cava

Paint Name (I/E/F/D): Beige Cava / Quarry Beige / Beige Sable / Sandbeige

Paint Code(s): AR-821

a.k.a: Desert Beige on 1971 105.51 and 105.71 cars.



Rosso Amaranto

Paint Name (I/E/F/D): Rosso Amaranto / Marroon / Rouge Amarante / Weinrot
Paint Code(s): AR-308, AR-509



Blu Olandese

Paint Name (I/E/F/D): Blu Olandese / Dark Blue / Bleu Hollandais / Hollandblau
Paint Code(s): AR-343



Faggio

Paint Name (I/E/F/D): Faggio / Beech / Bois Clair / Buchenholzfarbe (Buchenholzfarbem)
Paint Code(s): AR-516 (?)



Nero (on request)

Paint Name (I/E/F/D): Nero / Black / Noir / Schwarz

Paint Code(s): AR-601, AR-817, AR-901, AR-904, AR-905, AR-915



Giallo Ochra

Paint Name (I/E/F/D): Giallo Ochra / Yellow Ochre / Jaune / Ockergelb

Paint Code(s): AR-109

a.k.a: Ochre on 1971 105.51 and 105.71 cars.



Verde Pino

Paint Name (I/E/F/D): Verde Pino / Pine Green / Vert Pin / Piniengrün

Paint Code(s): AR-216, AR-234

Ditzler/PPG #43782 / DuPont #8775



Blu Francia

Paint Name (I/E/F/D): Blu Francia / French Blue / Bleu France / Französisch Blau
Paint Code(s): AR-342



Bluette (on request)

Paint Name (I/E/F/D): Bluette / Bluette / Bleu Pétrole / Bluette
Paint Code(s): AR-506



Antracite Inglese (on request)

Paint Name (I/E/F/D): Antracite Inglese / Charcoal Grey / Anthracite / Englisch Anthrazit
(English Anthrazit)

Paint Code(s): AR-736

Note: The bluish tint is probably a scanning error.



Rosso Alfa

Paint Name (I/E/F/D): Rosso Alfa / Alfa Red / Rouge Alfa / Alfa Rot (Alfarot)

Paint Code(s): AR-130, AR-210, AR-303, AR-501, AR-555



Verde Muschio Chiaro

Paint Name (I/E/F/D): Verde Muschio Chiaro / Dark Green (Light) / Vert Mousse Clair / Moosgrün, Hell

Paint Code(s): AR-227

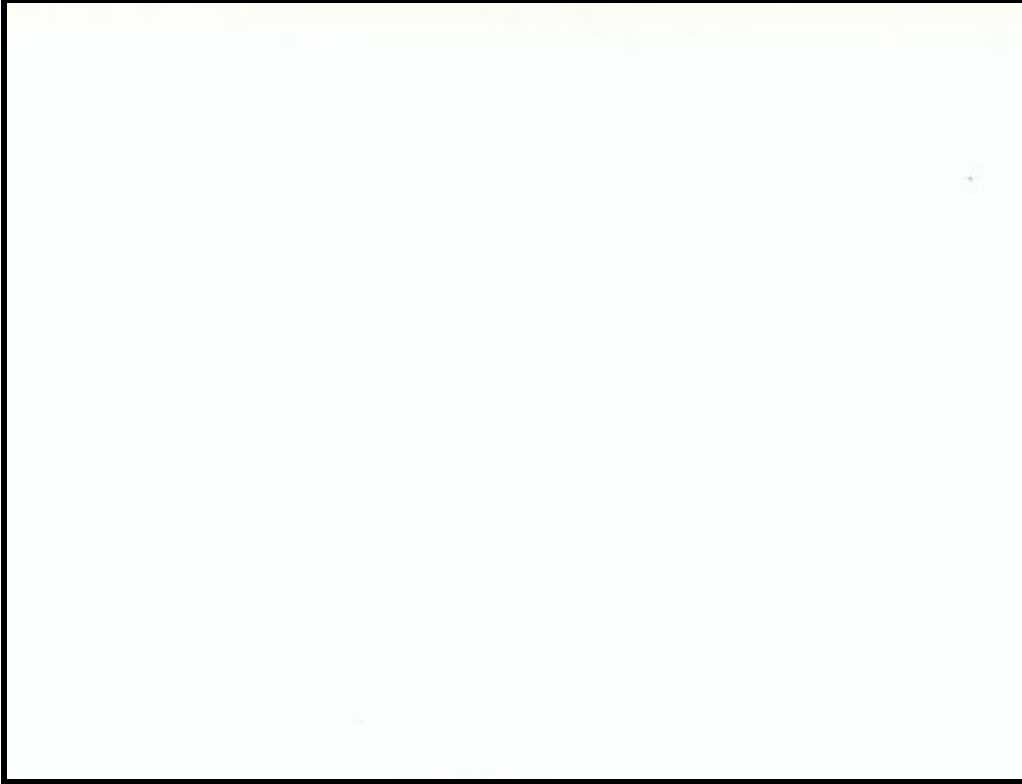
a.k.a: Moss Green (AR-209, darker than AR-227) on 1971 105.51 and 105.71 cars.



Bianco

Paint Name (I/E/F/D): Bianco / White / Blanc / Weiss

Paint Code(s): AR-241



Avorio

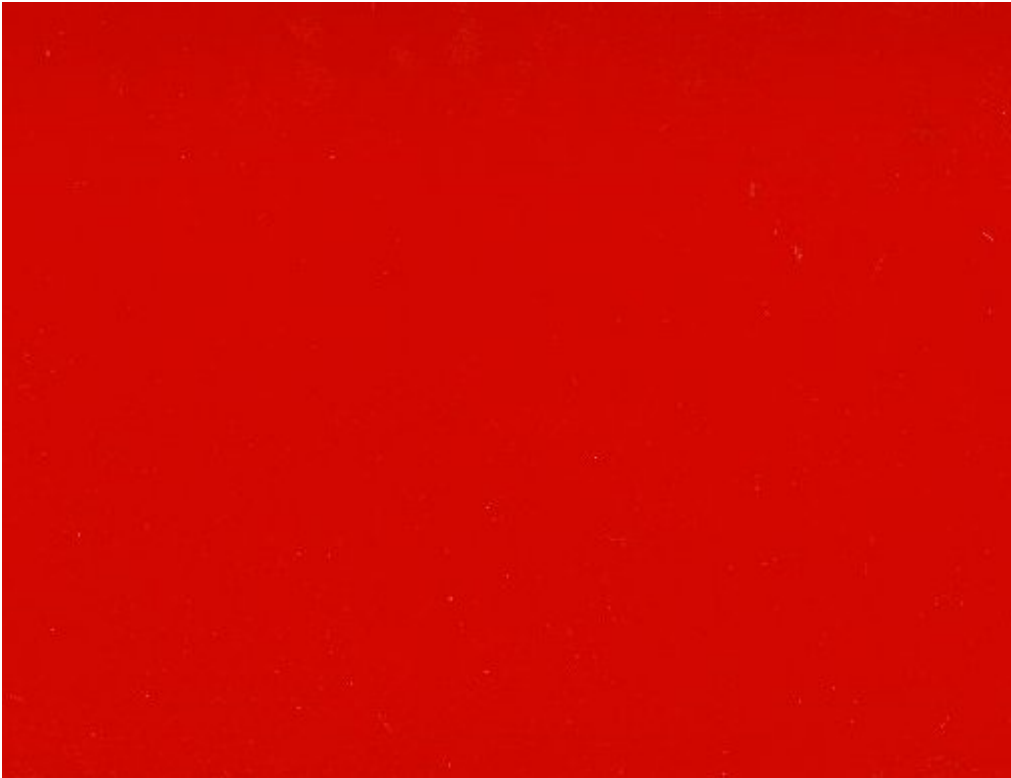
Paint Name (I/E/F/D): Avorio / Ivory / Ivoire / Elfenbein
Paint Code(s): AR-129

Note: See also [this post](#) and the discussion that follows for information about AR-129 and the various shades of AR-103 Avorio and Avorio Pininfarina.



Rosso

Paint Name (I/E/F/D): Rosso / Farina Red / Rouge / Rot
Paint Code(s): AR-304, AR-514



Blu

Paint Name (I/E/F/D): Blu / Blue / Bleu / Blau

Paint Code(s): AR-323, AR-363 (?)

See also [this thread](#).



Verde Inglese

Paint Name (I/E/F/D): Verde Inglese / British Green / Vert Anglais / Englisch Grün

Paint Code(s): AR-219, AR-306

Ditzler/PPG #44848 / DuPont #37003



Giallo Prototipo

Paint Name (I/E/F/D): Giallo Prototipo / Prototype Yellow (Jellow Prototype) / Jaune Prototype (Joune Prototype) / Prototype Gelb (Gelb Prototyp)

Paint Code(s): AR-119



Grigio Chiaro Metallizzato

Paint Name (I/E/F/D): Grigio Chiaro Metallizzato / Metallic light Grey / Gris Clair Métallisé / Hellgrau Metallisiert

Paint Code(s):

- AR-727 (1966-1980), Ditzler/PPG #32838, Du Pont #43078, [Standex Classics](#).
- AR-727-1 (1972), Du Pont #8751.
- AR-737 (1969-1978), Du Pont #37005, #42667.
- AR-748 (1976-1984), Ditzler/PPG 32838, Du Pont #43078.
- AR-765 (1982-1985)
- AR-775 (1987-1989)

The paints are also available from [Glasurit](#) and [Standex Classics](#).

Manufacturer codes were collected from various sources. Use at your own risk.



Grigio Medio Metallizzato

Paint Name (I/E/F/D): Grigio Medio Metallizzato / Metallic Medium Grey / Gris Moyen Métallisé / Mittelgrau Metallisiert

Paint Code(s): AR-728, AR-749, AR-776

a.k.a: Gunmetal Metallic on 1971 105.51 and 105.71 cars.



Verde Oliva Metallizzato

Paint Name (I/E/F/D): Verde Oliva Metallizzato / Metallic Olive Green / Vert Olive Métallisé / Olivgrün Metallisiert

Paint Code(s): AR-213, AR-235



Giallo Piper

Paint Name (I/E/F/D): Giallo Piper / Piper Yellow / Jaune Piper / Piper Gelb (Piper - Gelb)

Paint Code(s): AR-116

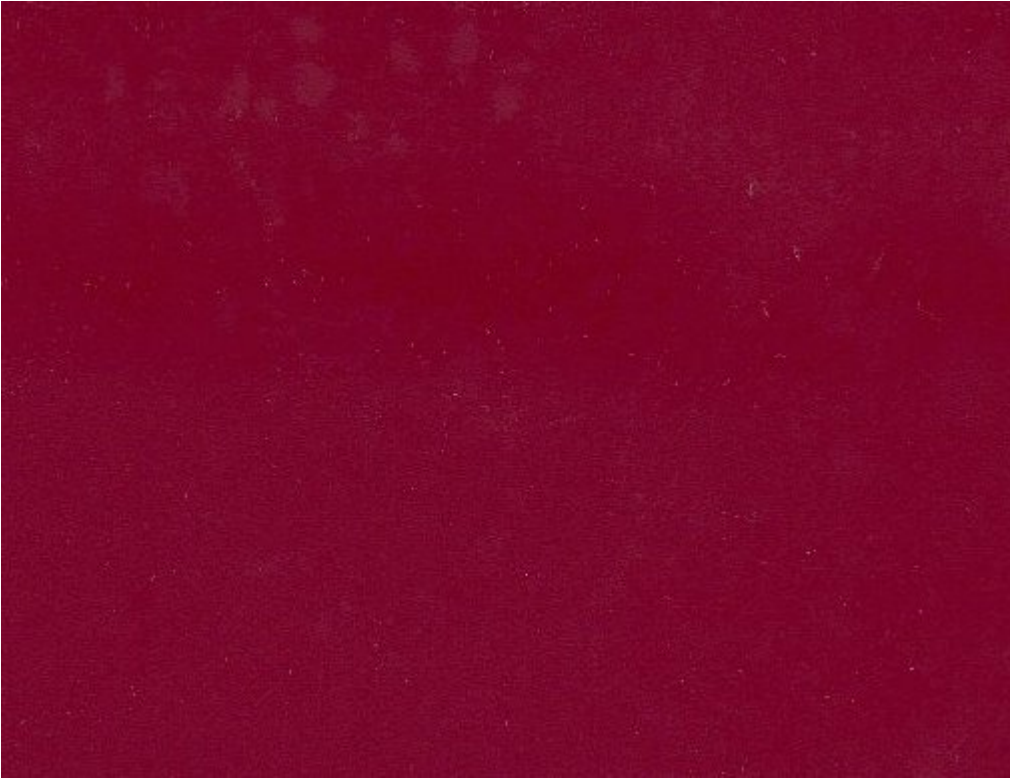


Prugna

Paint Name (I/E/F/D): Prugna / Plum Violet / Bleu Prunelle / Pflaumenblau

Paint Code(s): AR-525

a.k.a: Plum (AR-509) on 1971 105.51 and 105.71 cars.



Azzuro Le Mans

Paint Name (I/E/F/D): Azzuro Le Mans / Le Mans Blue / Bleu Le Mans / Le Mans Blau

Paint Code(s): AR-348



Blu Pervinca Metallizzato

Paint Name (I/E/F/D): Blu Pervinca Metallizzato / Metallic Pervinca Blue / Bleu Pervinca
Métallisé / Pervinca Blau Metallisiert

Paint Code(s): AR-349, AR-357, AR-367



Beige Chiaro Metallizzato

Paint Name (I/E/F/D): Beige Chiaro Metallizzato / Metallic Light Beige / Beige Clair Métallisé / Hellbeige Metallisiert

Paint Code(s): AR-827, AR-835



Bianco Zagato

Paint Name (I/E/F/D): Bianco Zagato / White Zagato / Blanc Zagato / Weiss Zagato

Paint Code(s): (???)



Giallo Zagato

Paint Name (I/E/F/D): Giallo Zagato / Yellow Zagato / Jaune Zagato (Joune Zagato) / Gelb Zagato

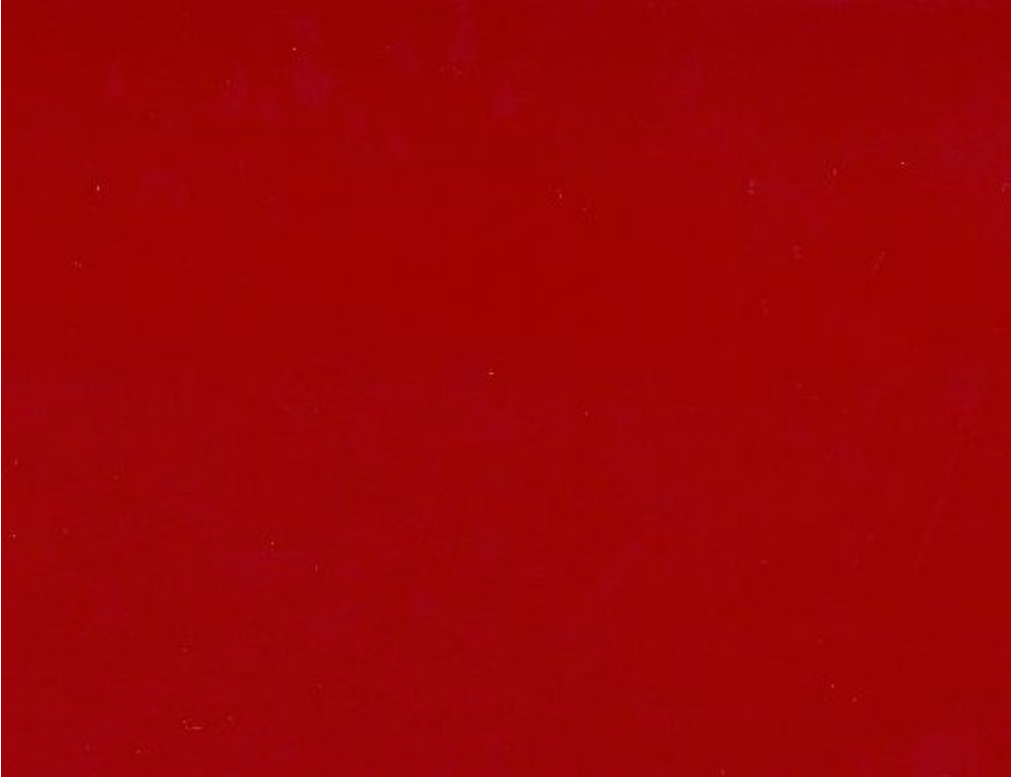
Paint Code(s): AR-117 (?)



Rosso Zagato

Paint Name (I/E/F/D): Rosso Zagato / Red Zagato / Rouge Zagato / Rot Zagato

Paint Code(s): AR-519



Grigio Metallizzato

Paint Name (I/E/F/D): Grigio Metallizzato / Grey Metallic / Gris Métallisé / Grau Metallisiert

Paint Code(s):



Champagne Metallizzato

Paint Name (I/E/F/D): Champagne Metallizzato / Metallic Champagne / Champagne Métallisé / Champagne Metallisiert

Paint Code(s): AR-855



Blu Medio

Paint Name (I/E/F/D): Blu Medio / Medium Blue / Bleu Moyen / Mittelblau

Paint Code(s): AR-350



Verde

Paint Name (I/E/F/D): Verde / Green / Vert / Grün

Paint Code(s): AR-241



Grigio

Paint Name (I/E/F/D): Grigio / Grey / Gris / Grau

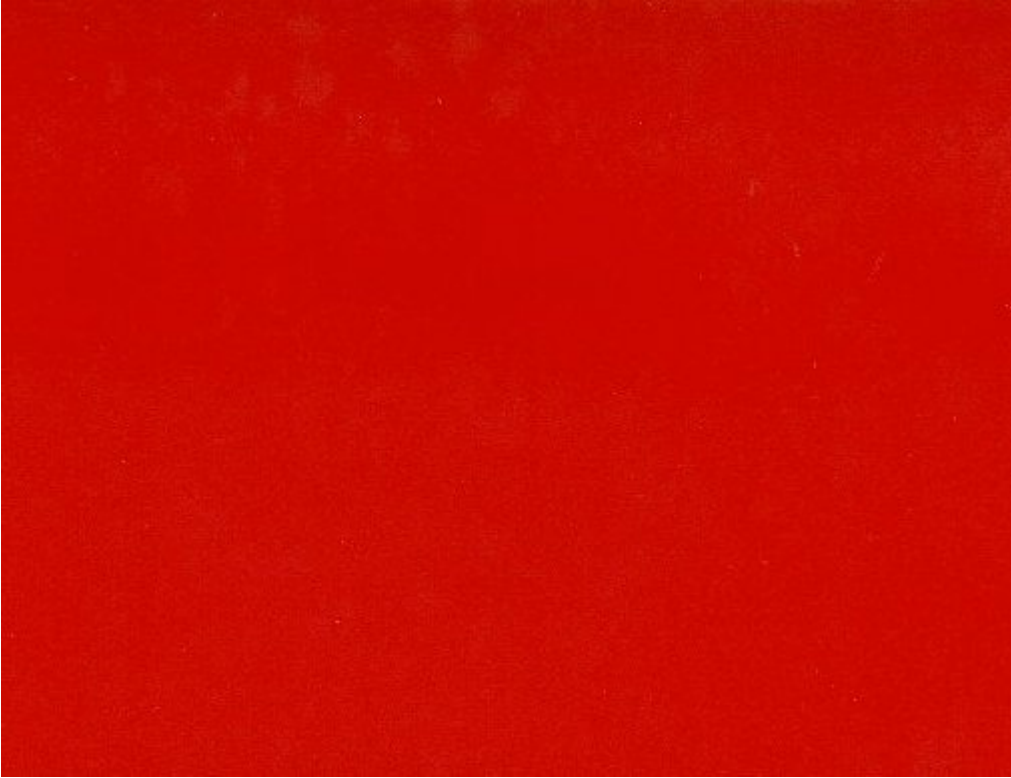
Paint Code(s): (???)



Rosso

Paint Name (I/E/F/D): Rosso / Red / Rouge / Rot

Paint Code(s): AR-539, AR-555, AR-4501



Arancio

Paint Name (I/E/F/D): Arancio / Orange / Orange / Orange

Paint Code(s): AR-134



Oro Metallizzato

Paint Name (I/E/F/D): Oro Metallizzato / Metallic gold / Or Métallisé / Gold Metallisiert

Paint Code(s): AR-826



Arancio Metallizzato

Paint Name (I/E/F/D): Arancio Metallizzato / Metallic Orange (Metalic Orange) / Orange
Métallisé / Orange Metallisiert

Paint Code(s): AR-602



Verde Metallizzato

Paint Name (I/E/F/D): Verde Metallizzato / Metallic Green (Metalic Green) / Vert Métallisé / Grün Metallisiert

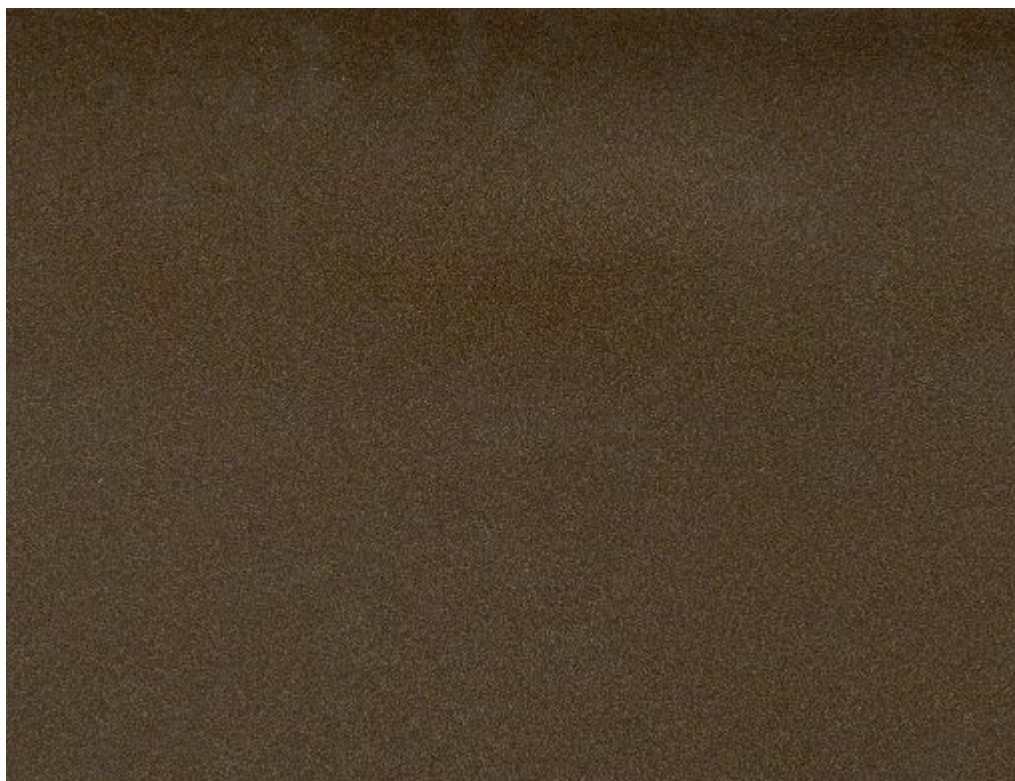
Paint Code(s): AR-240, AR-353



Marrone Metallizzato

Paint Name (I/E/F/D): Marrone Metallizzato / Metallic Brown (Metalic Brown) / Marron Métallisé / Kastanienbraun Metallisiert

Paint Code(s): AR-528 (?)



Argento Metallizzato

Paint Name (I/E/F/D): Argento Metallizzato / Metallic Silver (Metalic Silver) / Argent Métallisé / Silber Metallisiert (Silver Metallisiert)

Paint Code(s): AR-676

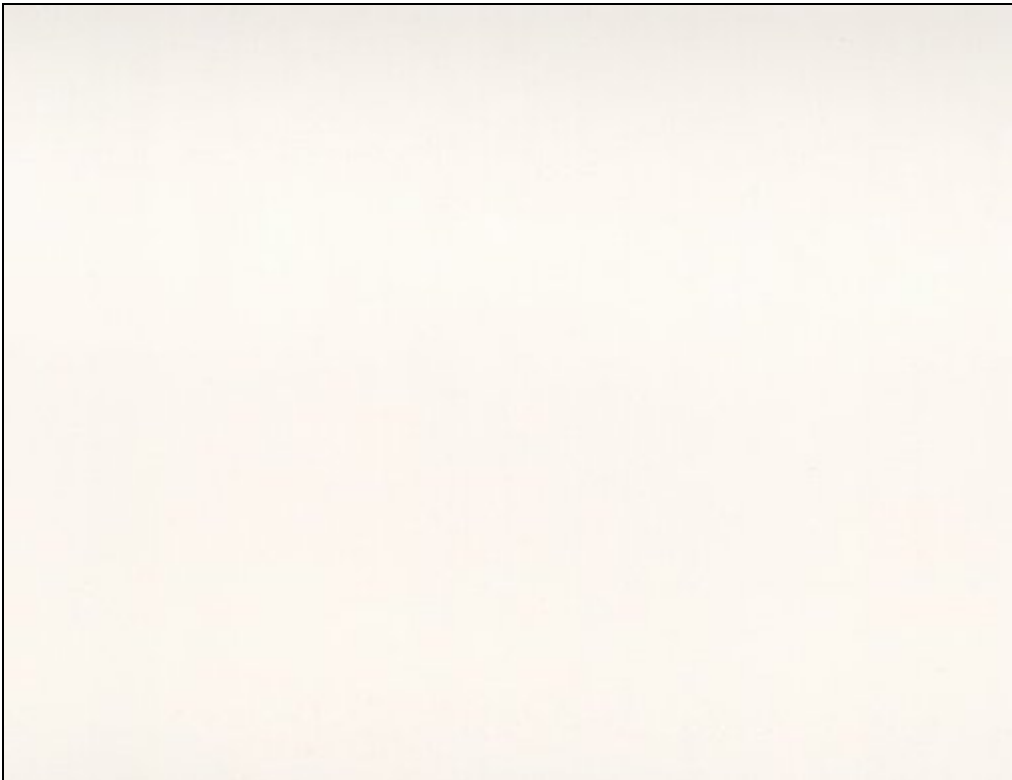


Bianco Capodimonte

Paint Name (I/E/F/D): Bianco Capodimonte / Capodimonte White / Blanc Capodimonte / Capodimonte Weiss (Capodimonte Weis)

Paint Code(s): AR-015, AR-018, AR-023

Note: "Capodimonte" means "mountain top". My first guess was that this name stems from somebody being reminiscent about what the snow capped Italian alps look like on some days at sunset. Later, I learned that Capodimonte is an area in the hills of Naples, Italy, and also the name of a world famous porcelain factory that no longer exists. Today, I tend to believe that the name of this paint is in reference to this porcelain.



Paint: Blu Posillipo

Paint Name (I/E/F/D): Blu Posillipo / Posillipo Blue / Bleu Posillipo / Posillipo Blau

Paint Code(s): AR-355, AR-369



Beige Ponza

Paint Name (I/E/F/D): Beige Ponza / Ponza Beige / Beige Ponza / Ponza Beige

Paint Code(s): AR-830



Verde Ischia

Paint Name (I/E/F/D): Verde Ischia / Ischia Green / Vert Ischia / Ischia Grün

Paint Code(s): AR-230



Grigio Vesuvio

Paint Name (I/E/F/D): Grigio Vesuvio / Vesuvio Grey / Gris Vesuvio / Vesivio Grau

Paint Code(s): AR-742



Blu Procida

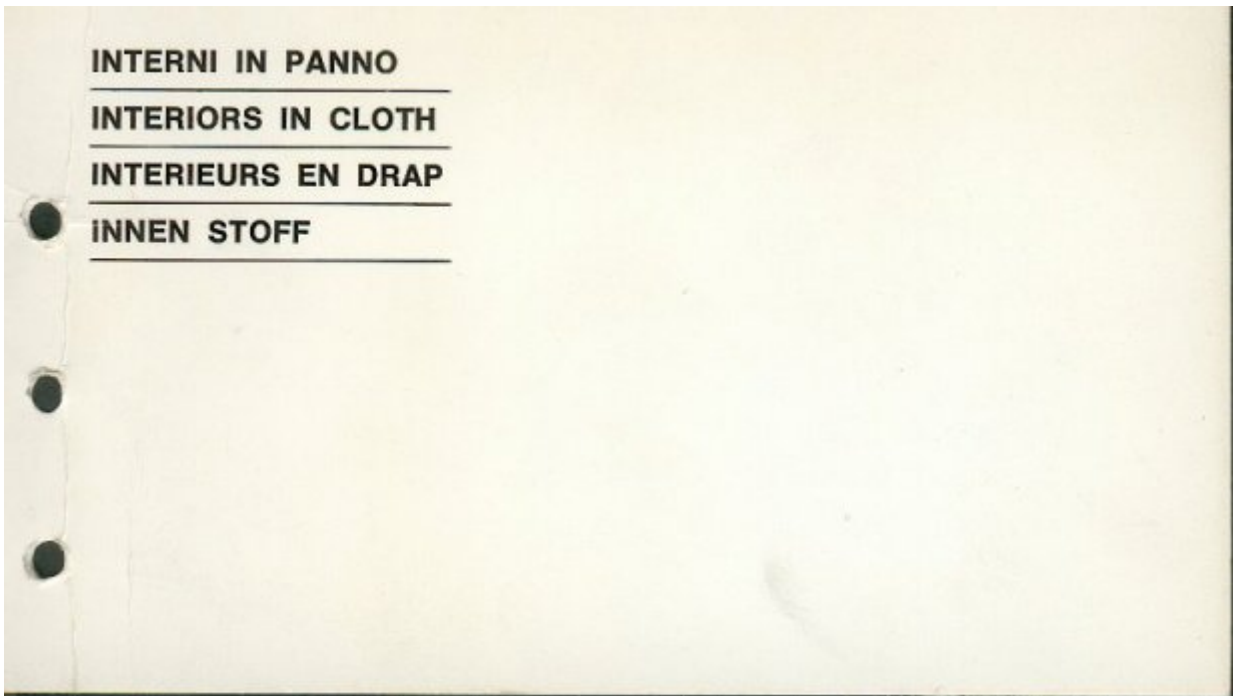
Paint Name (I/E/F/D): Blu Procida / Procida Blue / Bleu Procida / Procida Blau

Paint Code(s): AR-353



Interiors in Cloth: Introduction

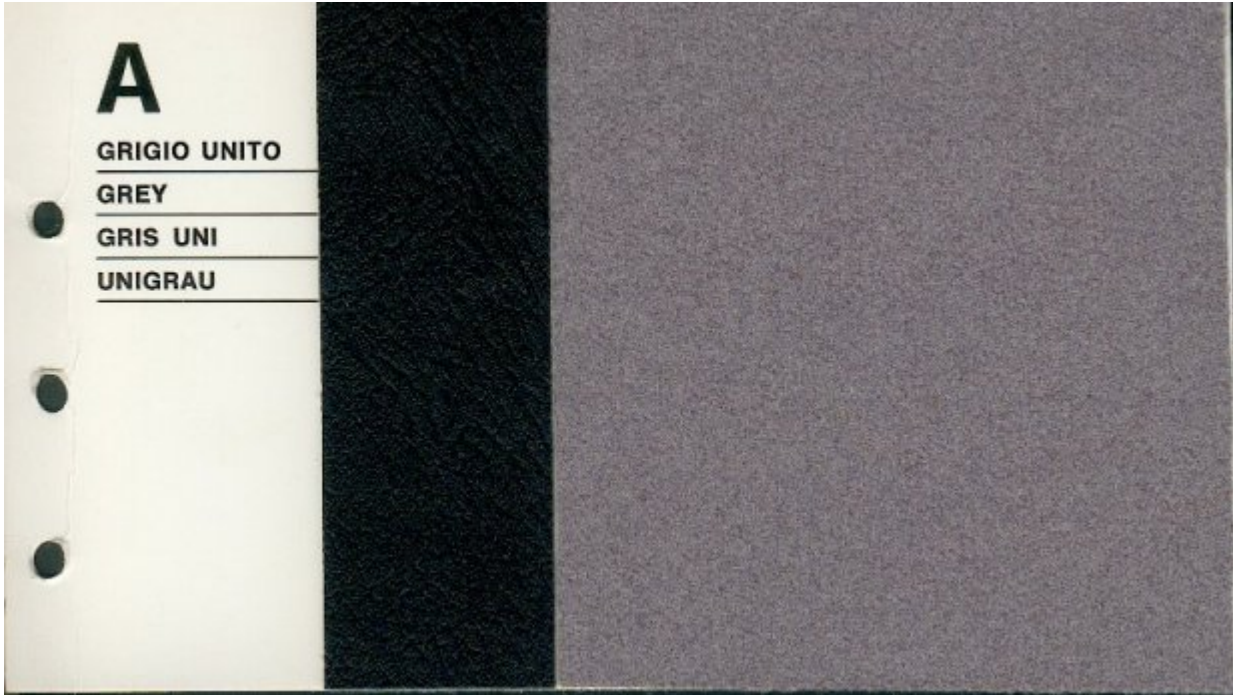
These samples were scanned at 150 DPI but had to be reduced to 75% of their original size due to the 100 KB limitation.



Interiors in Cloth: A - Grigio Unito

Color scheme: A

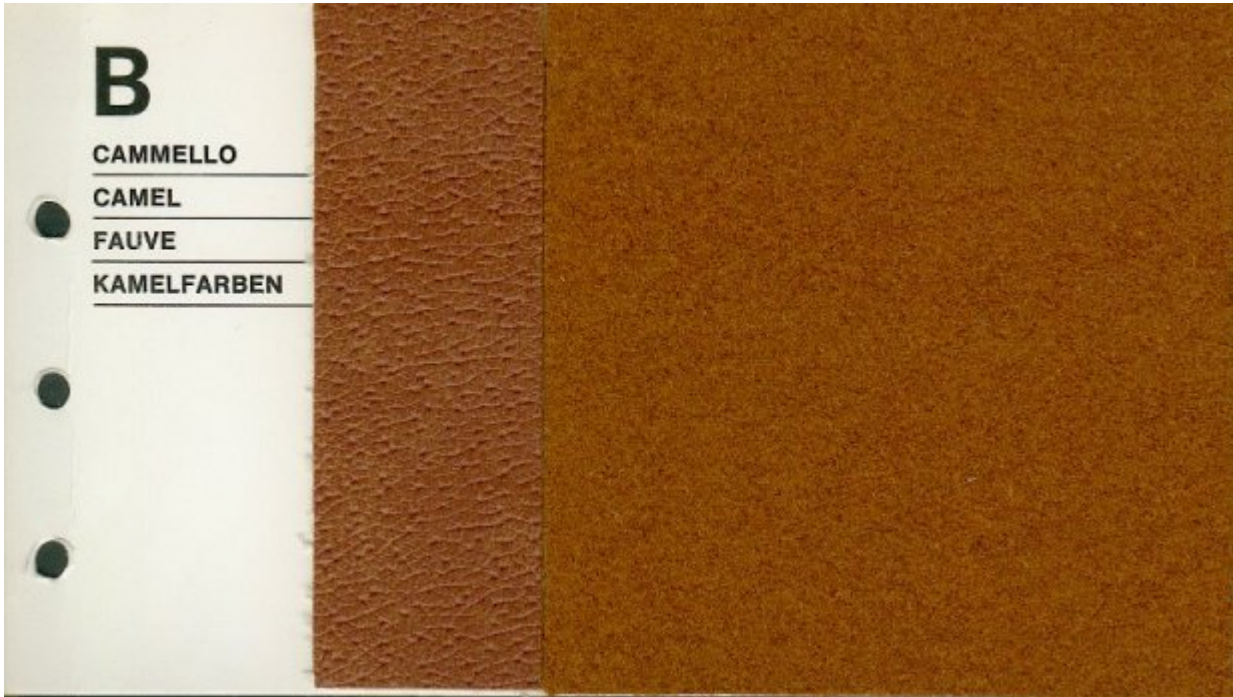
Name (I/E/F/D): Grigio Unito / Grey / Gris Uni / Uni Grau



Interiors in Cloth: B - Cammello

Color scheme: B

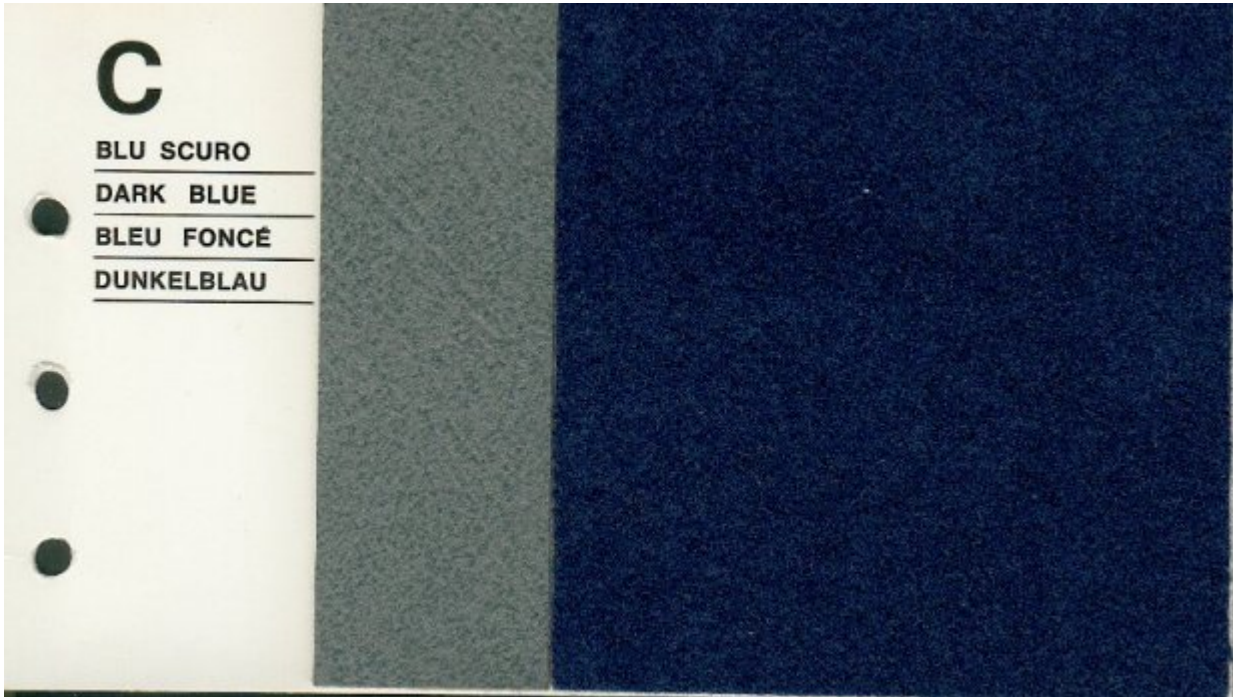
Name (I/E/F/D): Cammello / Camel / Fauve / Kamelfarben



Interiors in Cloth: C - Blu Scuro

Color scheme: C

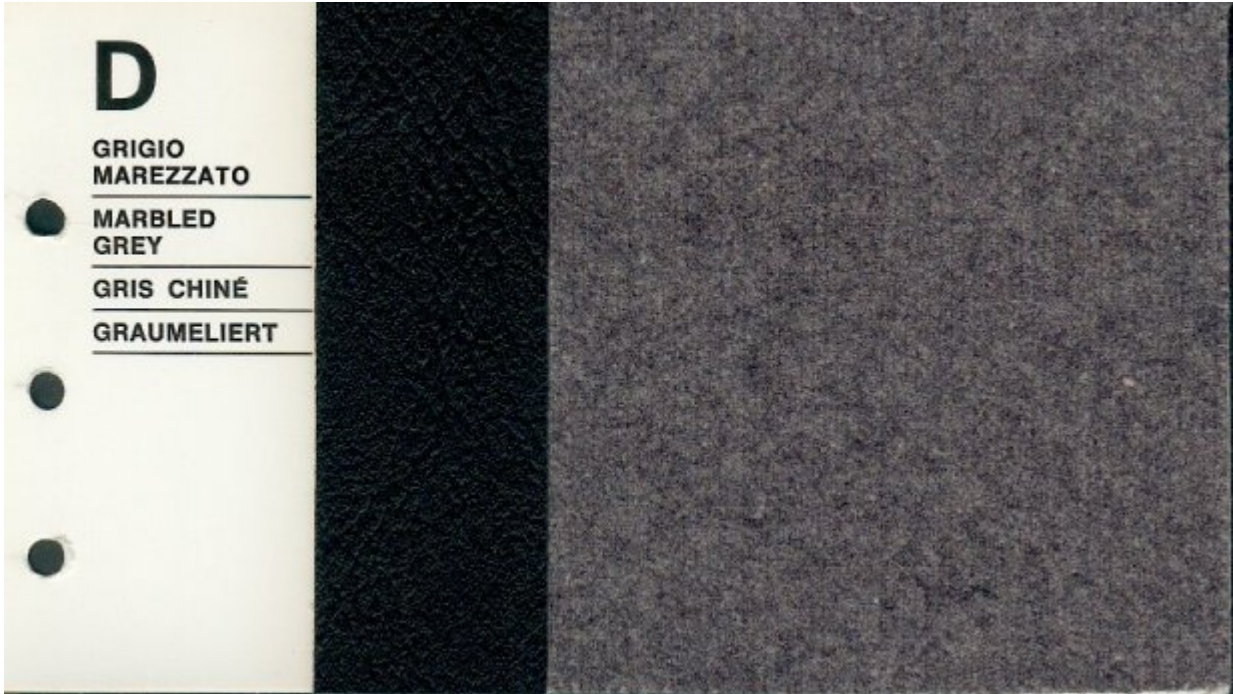
Name (I/E/F/D): Blu Scuro / Dark Blue / Bleu Foncé / Dunkelblau



Interiors in Cloth: D - Grigio Marezzato

Color scheme: D

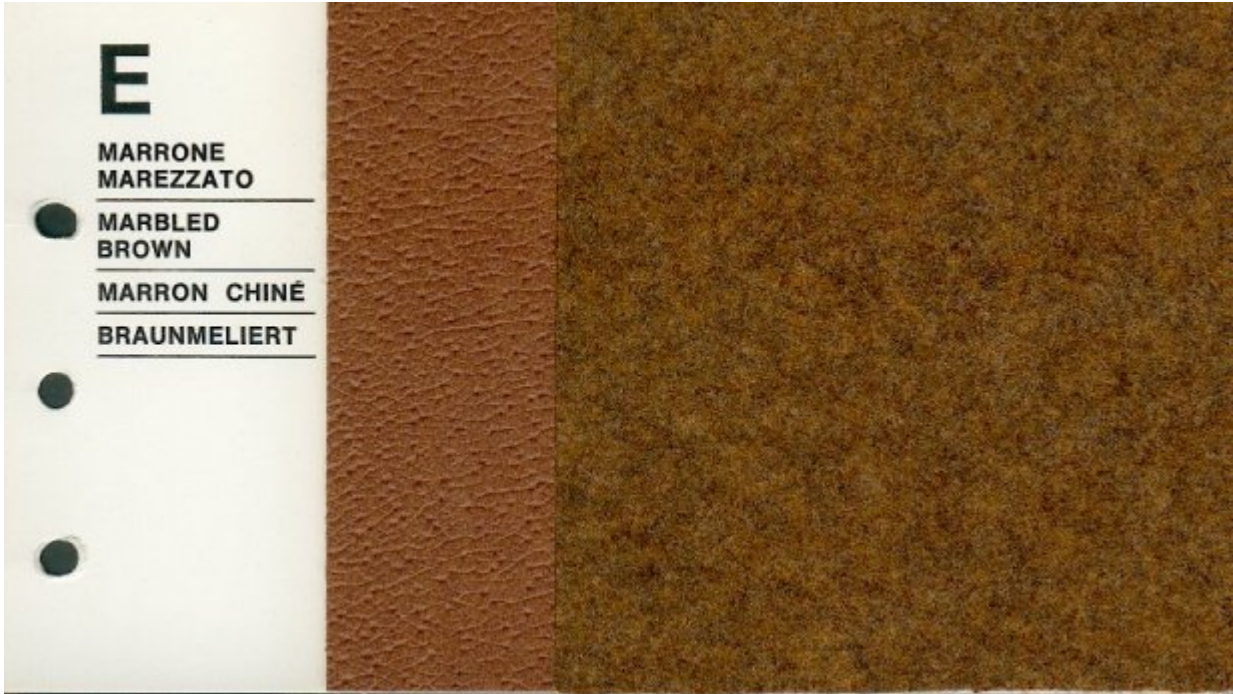
Name (I/E/F/D): Grigio Marezzato / Marbled Grey / Gris Chiné / Graumeliert



Interiors in Cloth: E - Marrone Marezzato

Color scheme: E

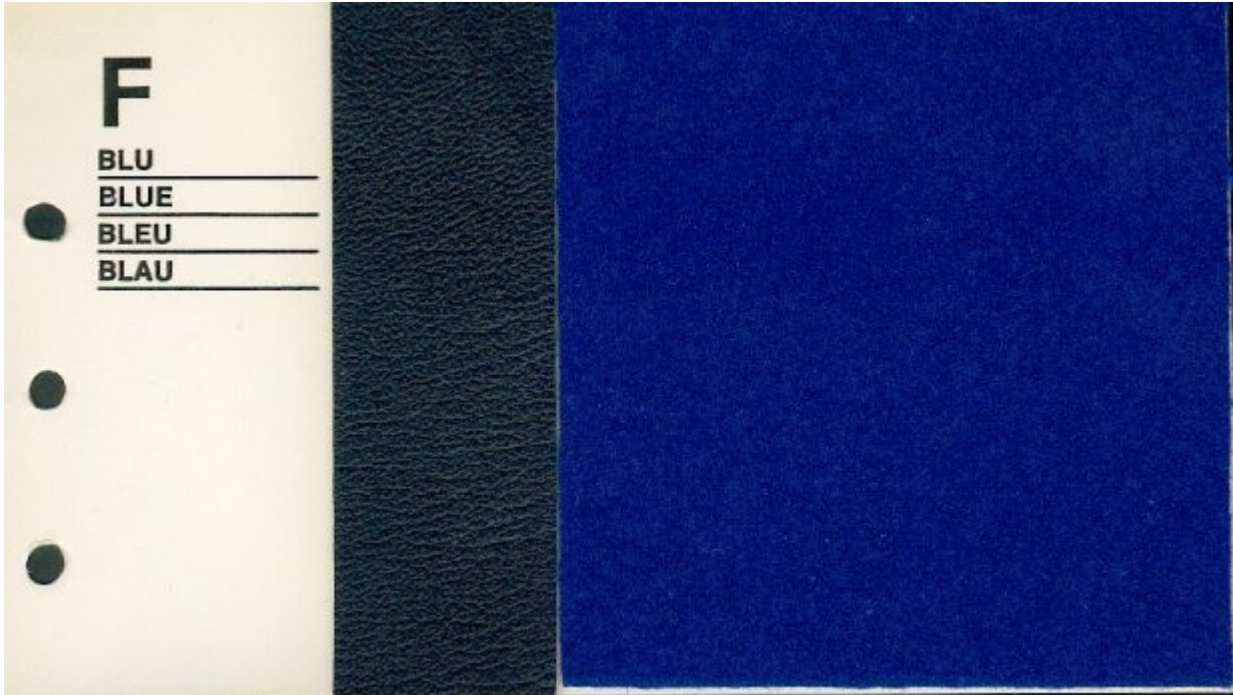
Name (I/E/F/D): Marrone Marezzato / Marbled Brown / Marron Chiné / Braunmeliert



Interiors in Cloth: F - Blu

Color scheme: F

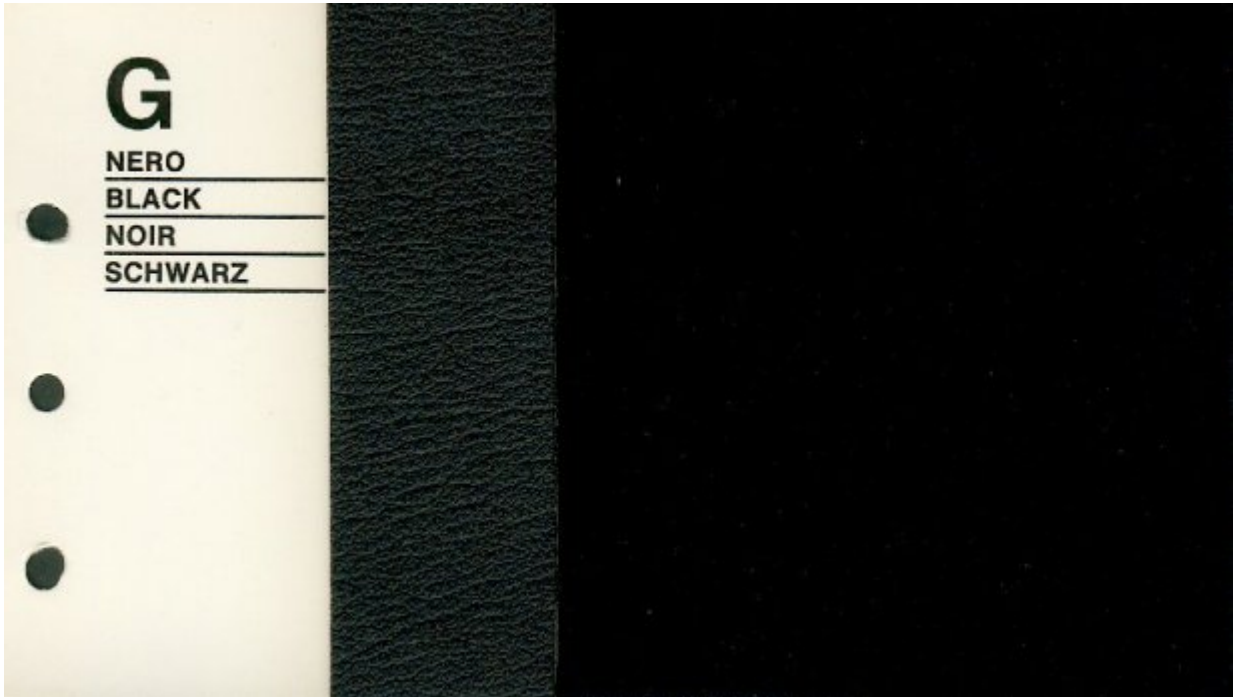
Name (I/E/F/D): Blu / Blue / Bleu / Blau



Interiors in Cloth: G - Nero

Color scheme: G

Name (I/E/F/D): Nero / Black / Noir / Schwarz



Interiors in Cloth: H - Avana

Color scheme: H

Name (I/E/F/D): Avana / Light Brown / Havane / Havanna

Note: Color schemes H and I do have the same names.



Interiors in Cloth: I - Avana

Color scheme: I

Name (I/E/F/D): Avana / Light Brown / Havane / Havanna

Note: Color schemes H and I do have the same names.



Interiors in Cloth: J - (none)

Color scheme: J

Does not exist.

Interiors in Cloth: K - (none)

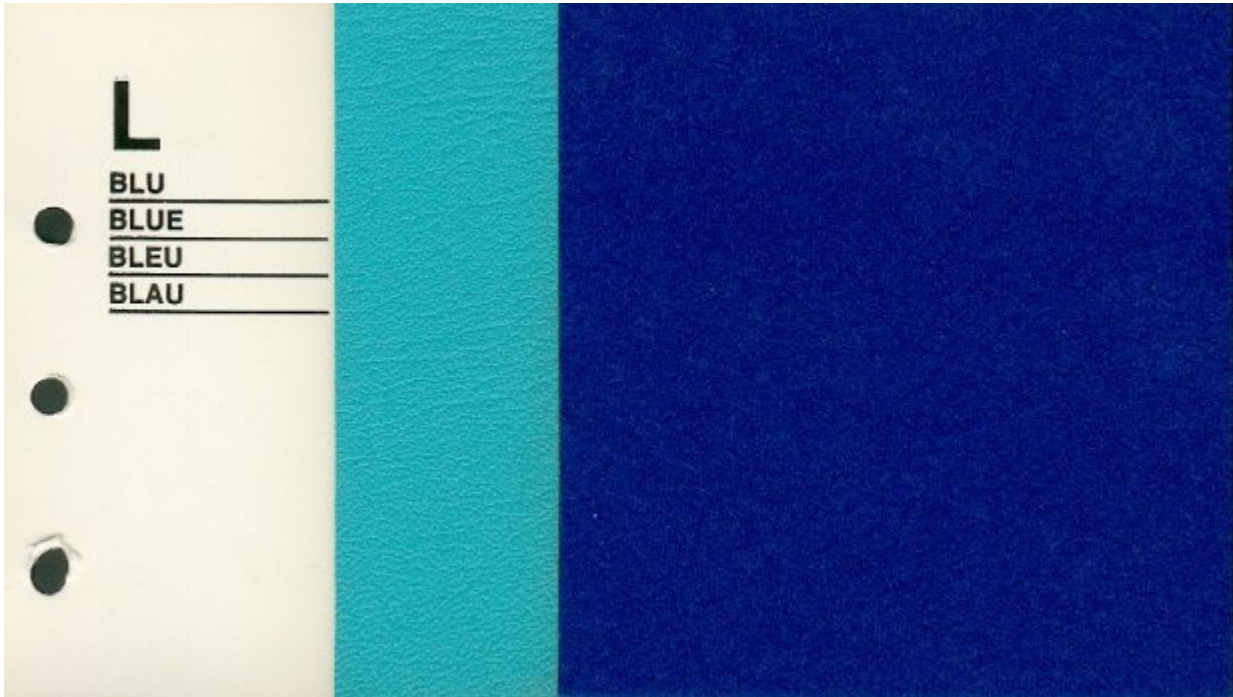
Color scheme: K

Does not exist.

Interiors in Cloth: L - Blu

Color scheme: L

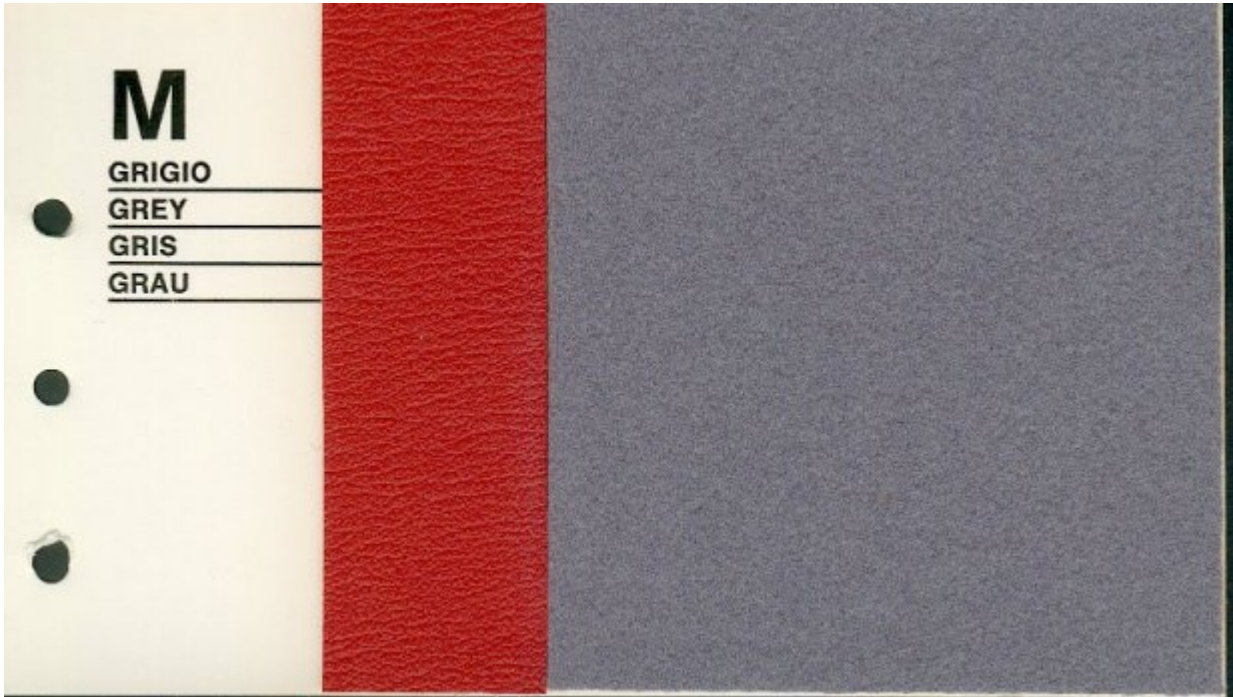
Name (I/E/F/D): Blu / Blue / Bleu / Blau



Interiors in Cloth: M - Grigio

Color scheme: M

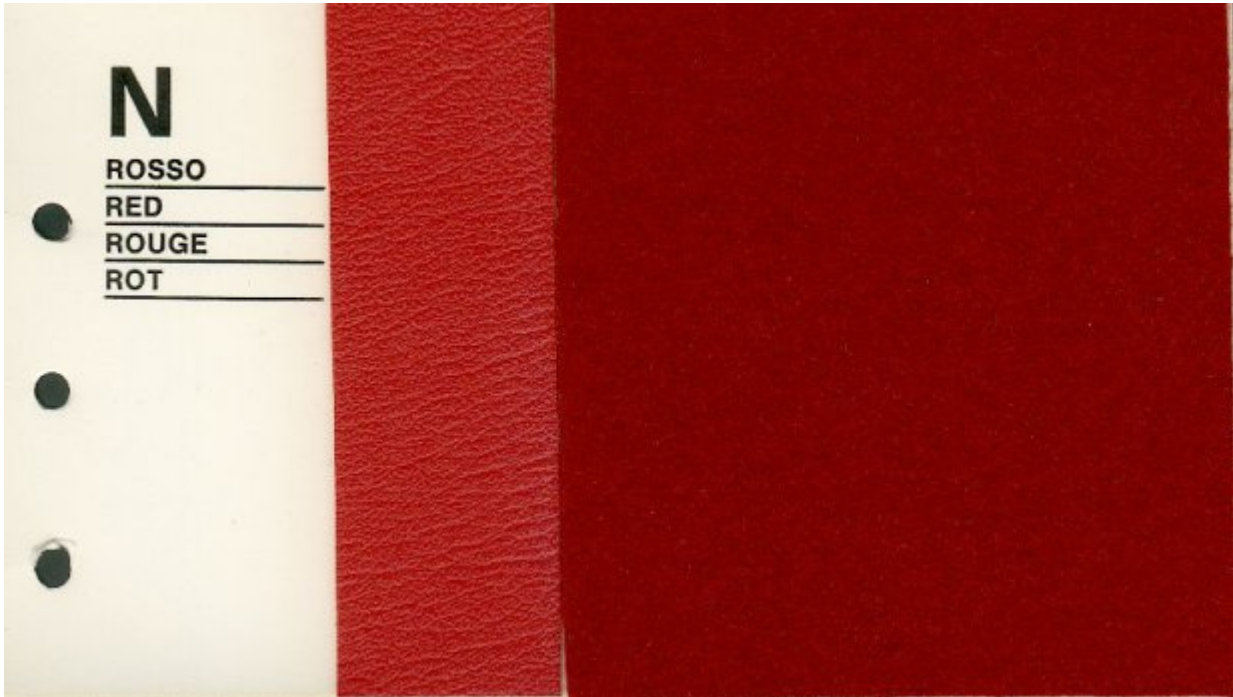
Name (I/E/F/D): Grigio / Grey / Gris / Grau



Interiors in Cloth: N - Rosso

Color scheme: N

Name (I/E/F/D): Rosso / Red / Rouge / Rot



Interiors in Cloth: O - Grigio

Color scheme: O

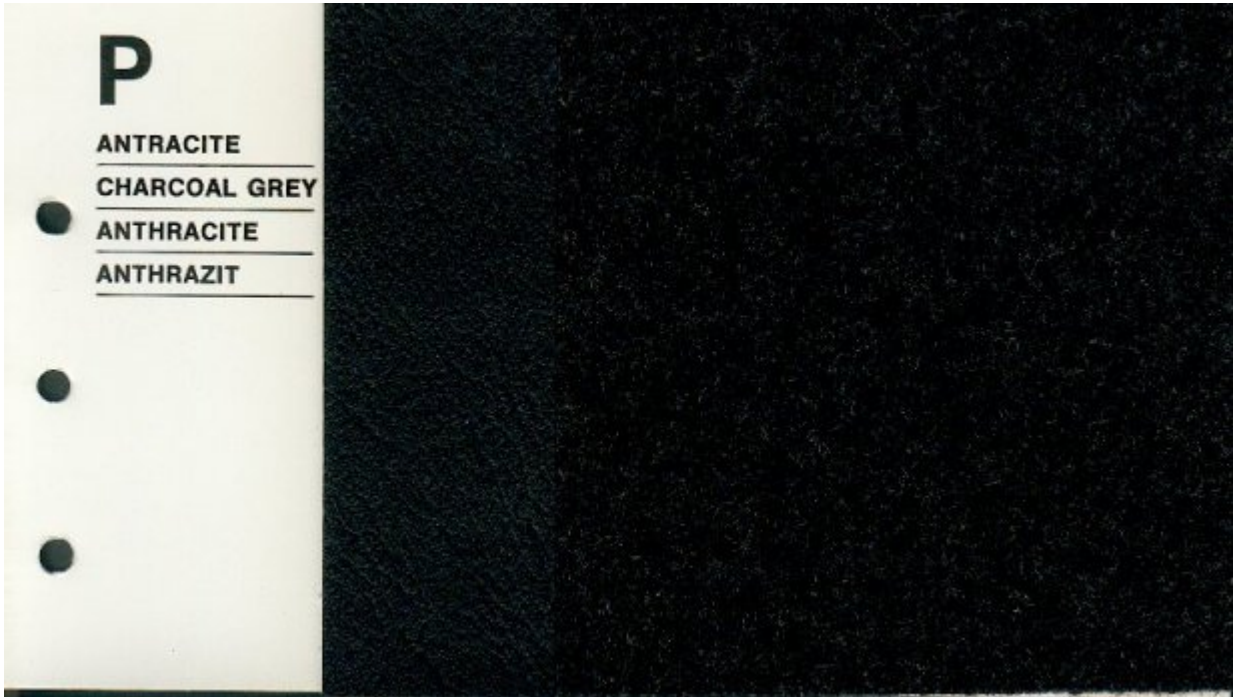
Name (I/E/F/D): Grigio / Grey / Gris / Grau



Interiors in Cloth: P - Antracite

Color scheme: P

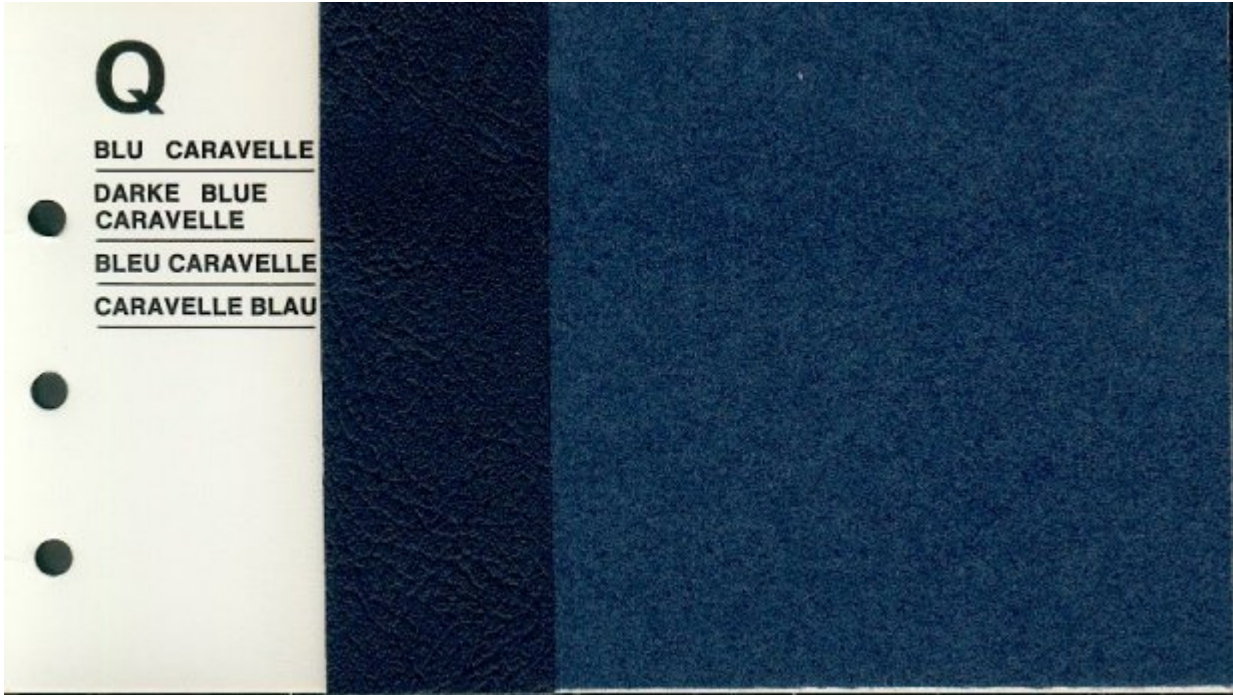
Name (I/E/F/D): Antracite / Charcoal Grey / Anthracite / Anthrazit



Interiors in Cloth: Q - Blu Caravelle

Color scheme: Q

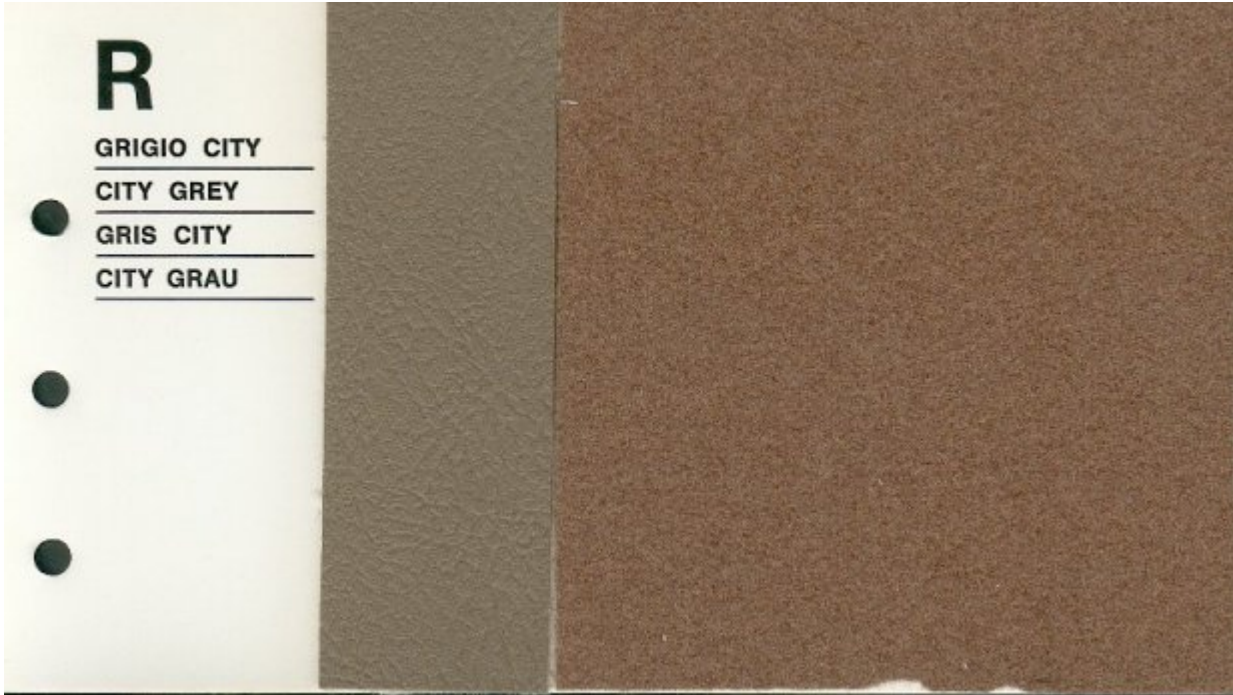
Name (I/E/F/D): Blu Caravelle / Dark Blue Caravelle / Bleu Caravelle / Caravelle Blau



Interiors in Cloth: R - Grigio City

Color scheme: R

Name (I/E/F/D): Grigio City / City Grey / Gris City / City Grau



Interiors in Cloth: S - Nocciola

Color scheme: S

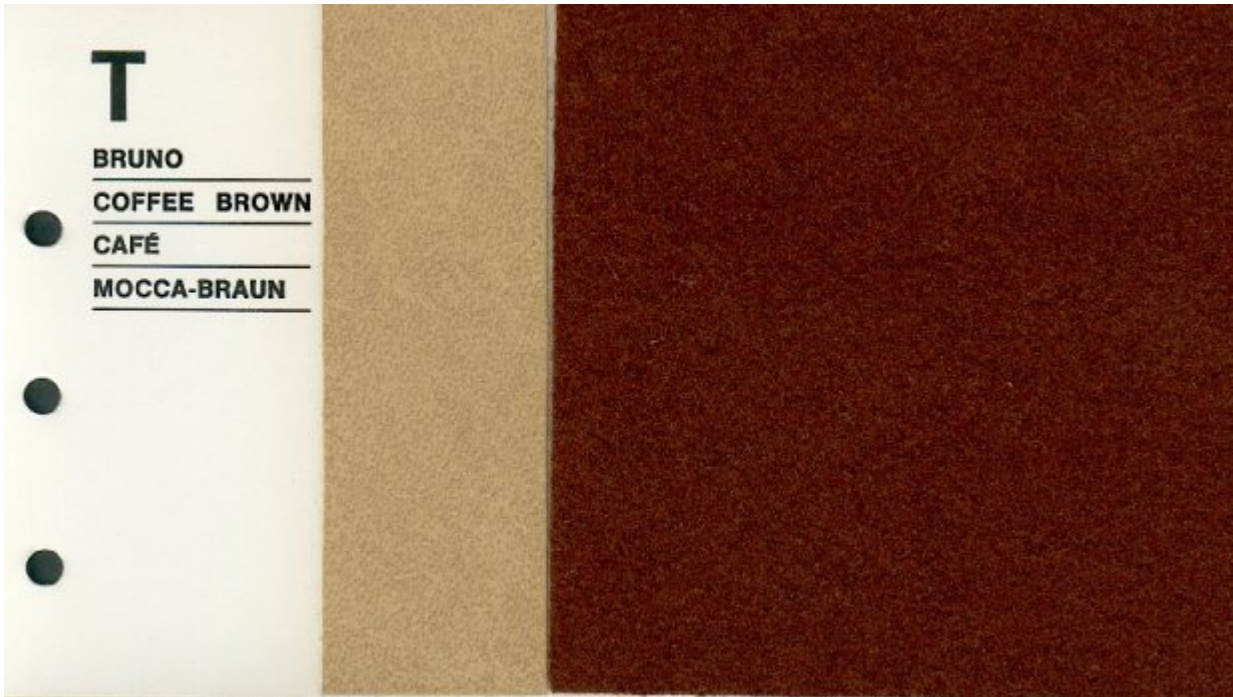
Name (I/E/F/D): Nocciola / Nut Brown / Noisette / Haselnuss



Interiors in Cloth: T - Bruno

Color scheme: T

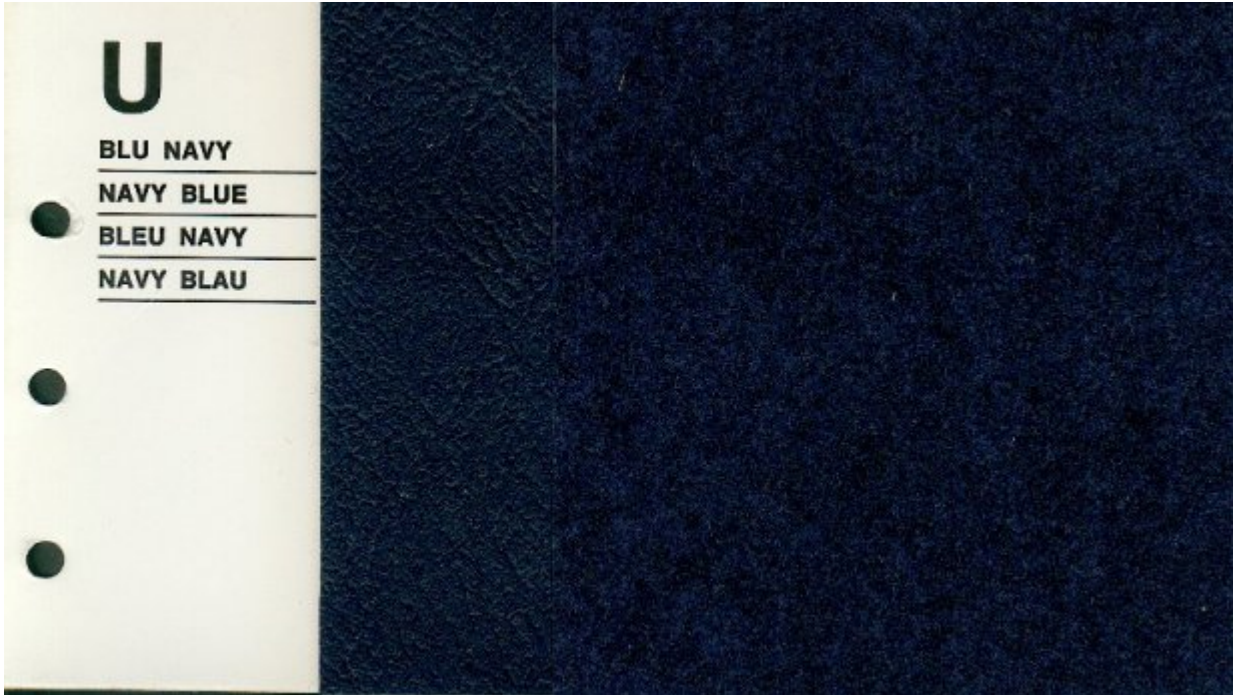
Name (I/E/F/D): Bruno / Coffee Brown / Café / Mocca-Braun



Interiors in Cloth: U - Blu Navy

Color scheme: U

Name (I/E/F/D): Blu Navy / Navy Blue / Bleu Navy / Navy Blau



Interiors in Cloth: V - Grigio Rocca

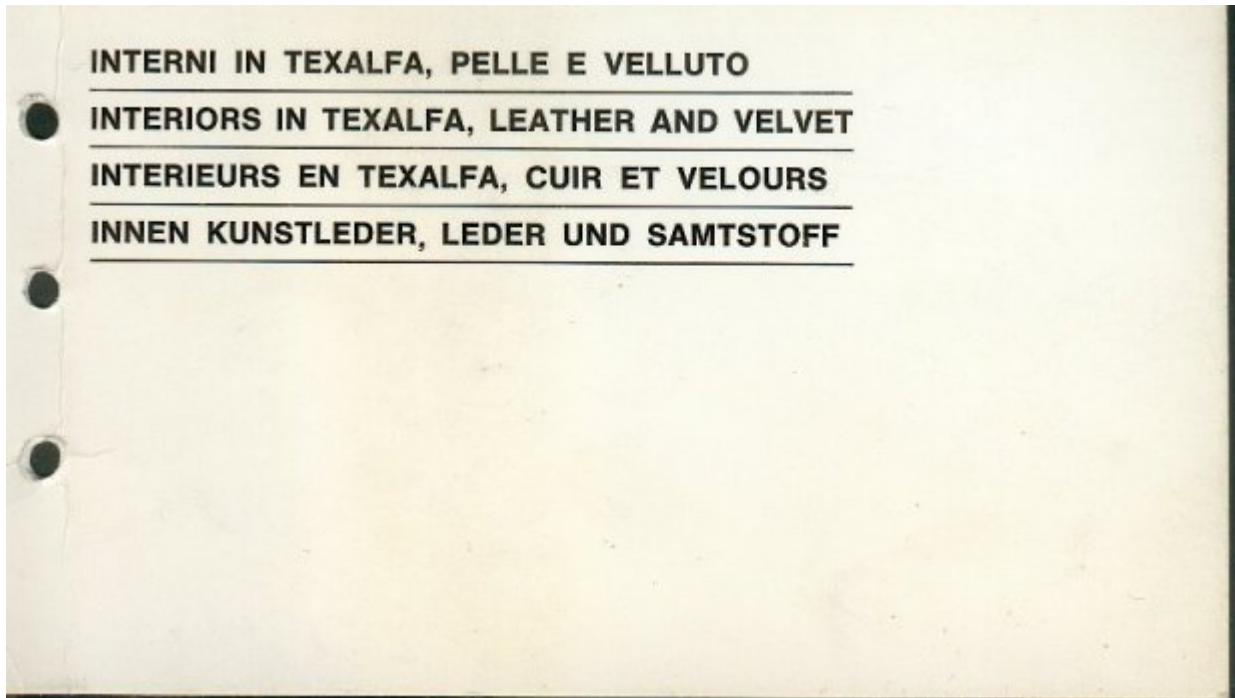
Color scheme: V

Name (I/E/F/D): Grigio Rocca / Rock Grey / Gris Rocher / Felsengrau



Interiors in Texalfa, Leather and Velvet:

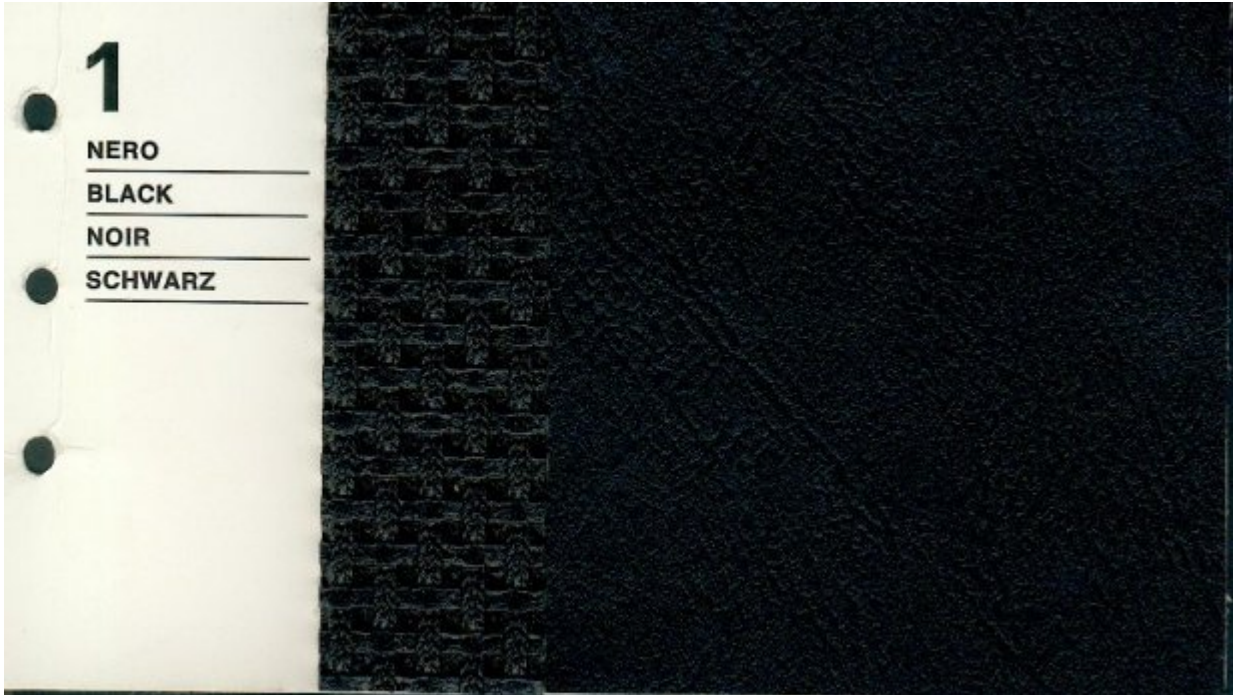
Interni in Texalfa, Pelle e Veluto / Interiors in Texalfa, Leather and Velvet / Interieurs en Texalfa, Cuir et Velours / Innen Kunstleder, Leder und Samtstoff



Interiors in Texalfa, Leather and Velvet: 1 - Nero

Color scheme: 1

Name (I/E/F/D): Nero / Black / Noir / Schwarz

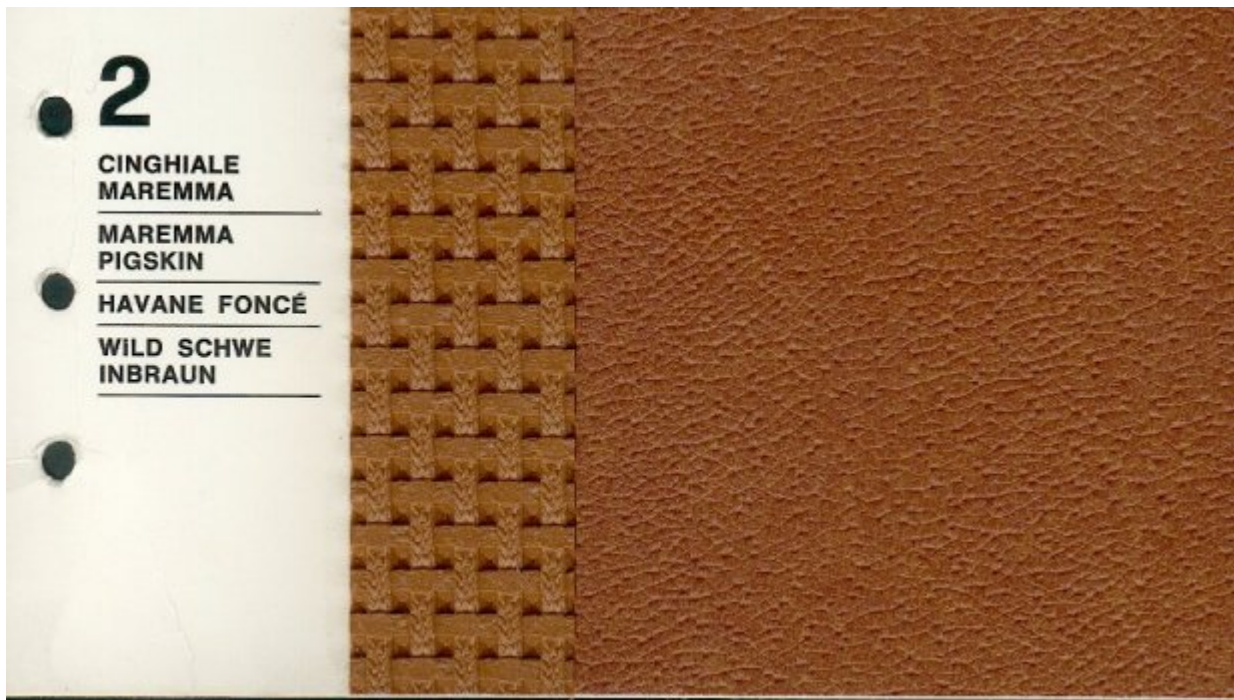


Interiors in Texalfa, Leather and Velvet: 2 - Cinghiale Maremma

Color scheme: 2

Name (I/E/F/D): Cinghiale Maremma / Maremma Pigskin / Havane Foncé / Wildschweinbraun

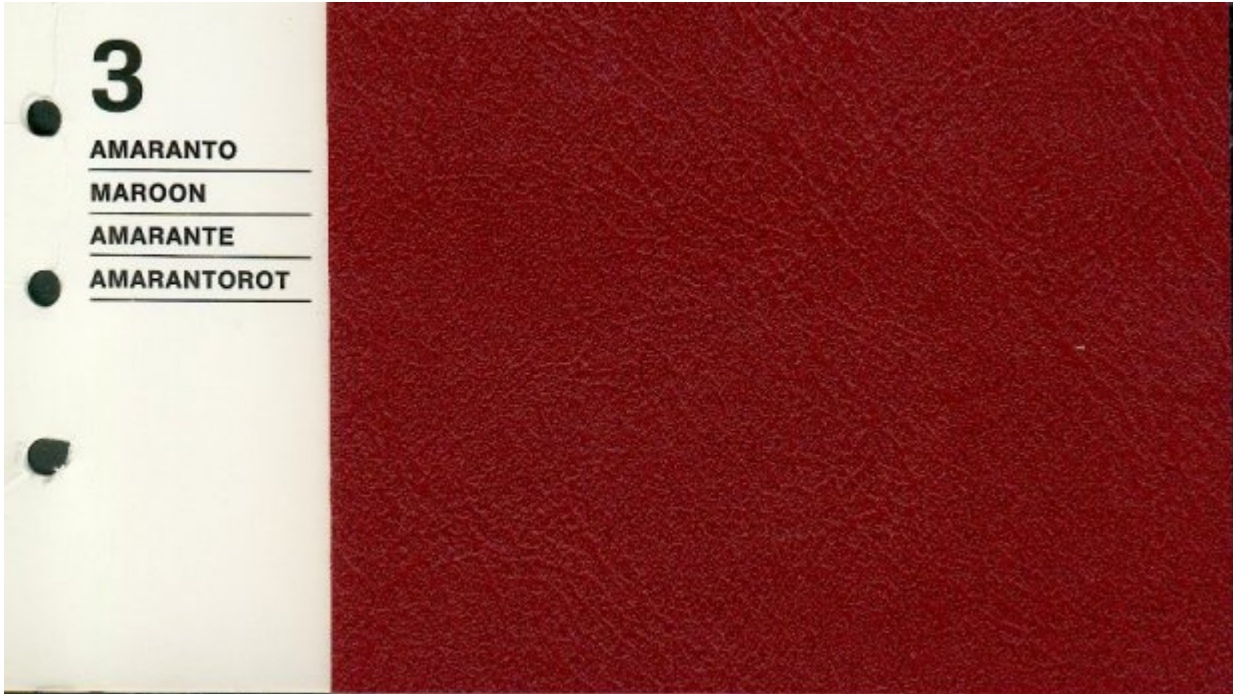
Note: "Maremma" means "marsh" or "swamp" and "Cinghiale " means "wild boar".
Interestingly, the French name means something completely different ("cinghiale" translates to "sanglier").



Interiors in Texalfa, Leather and Velvet: 3 - Amaranto

Color scheme: 3

Name (I/E/F/D): Amaranto / Maroon / Amarante / Amarantorot



Interiors in Texalfa, Leather and Velvet: 4 - Nero

Color scheme: 4

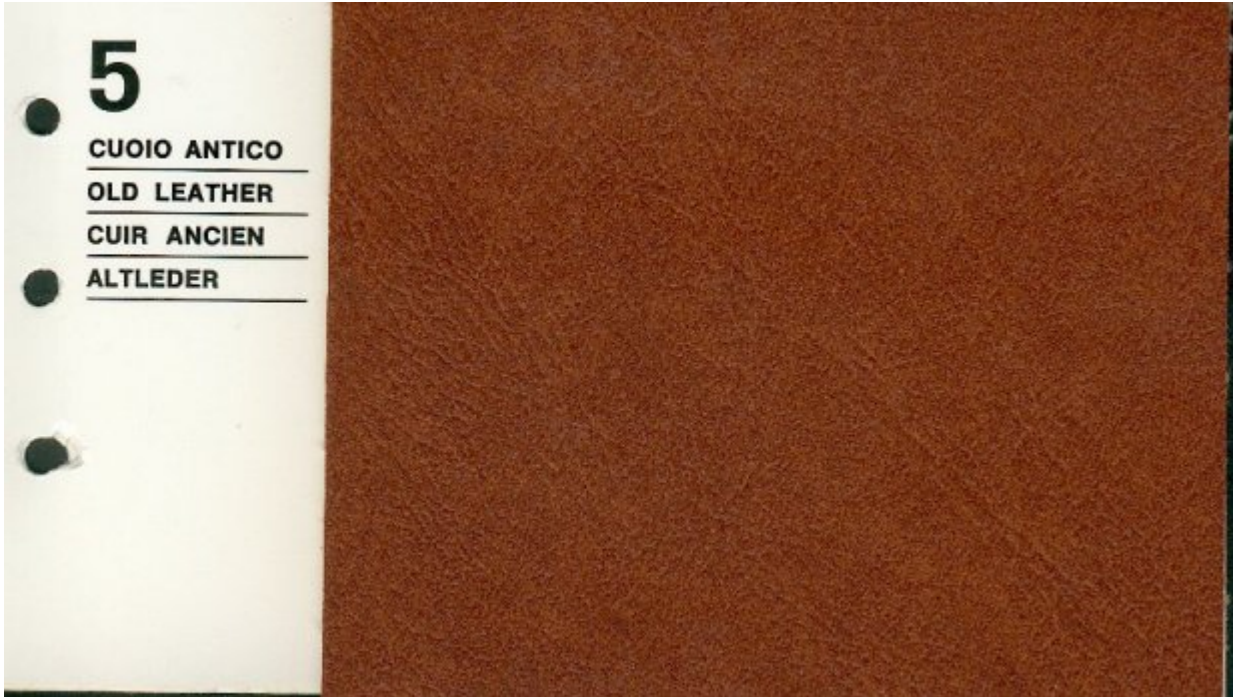
Name (I/E/F/D): Nero / Black / Noir / Schwarz



Interiors in Texalfa, Leather and Velvet: 5 - Cuoio Antico

Color scheme: 5

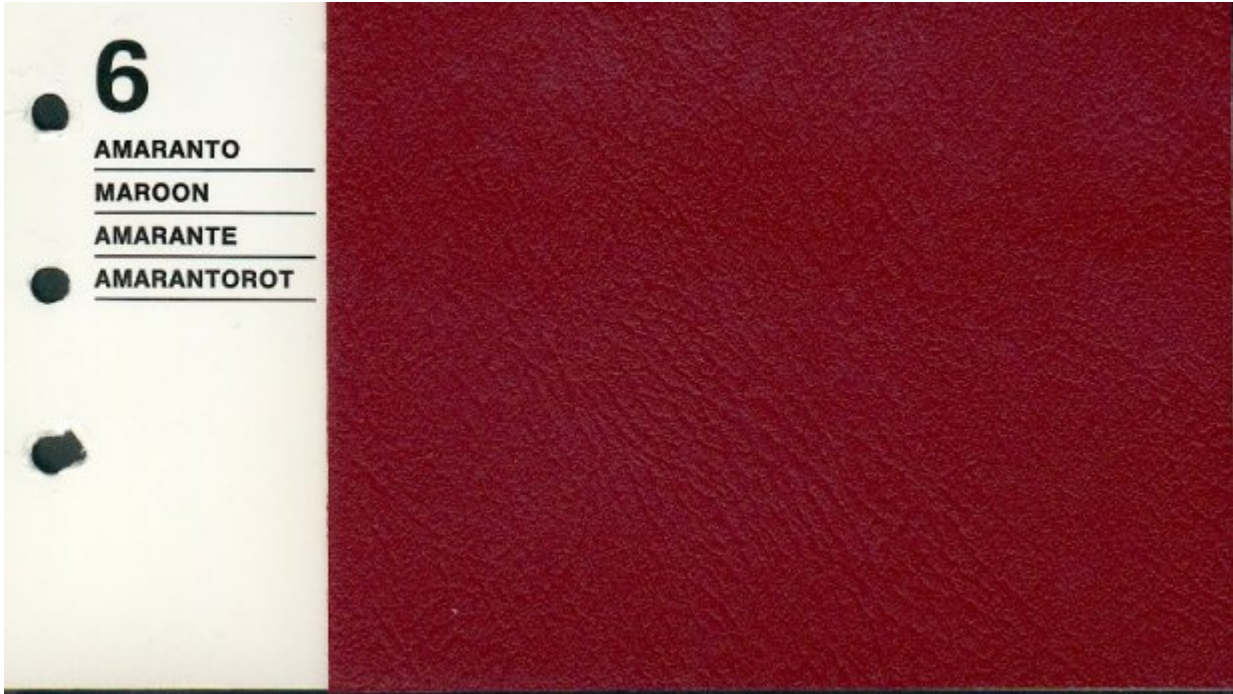
Name (I/E/F/D): Cuoio Antico / Old Leather / Cuir Ancien / Altleder



Interiors in Texalfa, Leather and Velvet: 6 - Amaranto

Color scheme: 6

Name (I/E/F/D): Amaranto / Maroon / Amarante / Amarantorot



Interiors in Texalfa, Leather and Velvet: 7 - Marrone Cuoio

Color scheme: 7

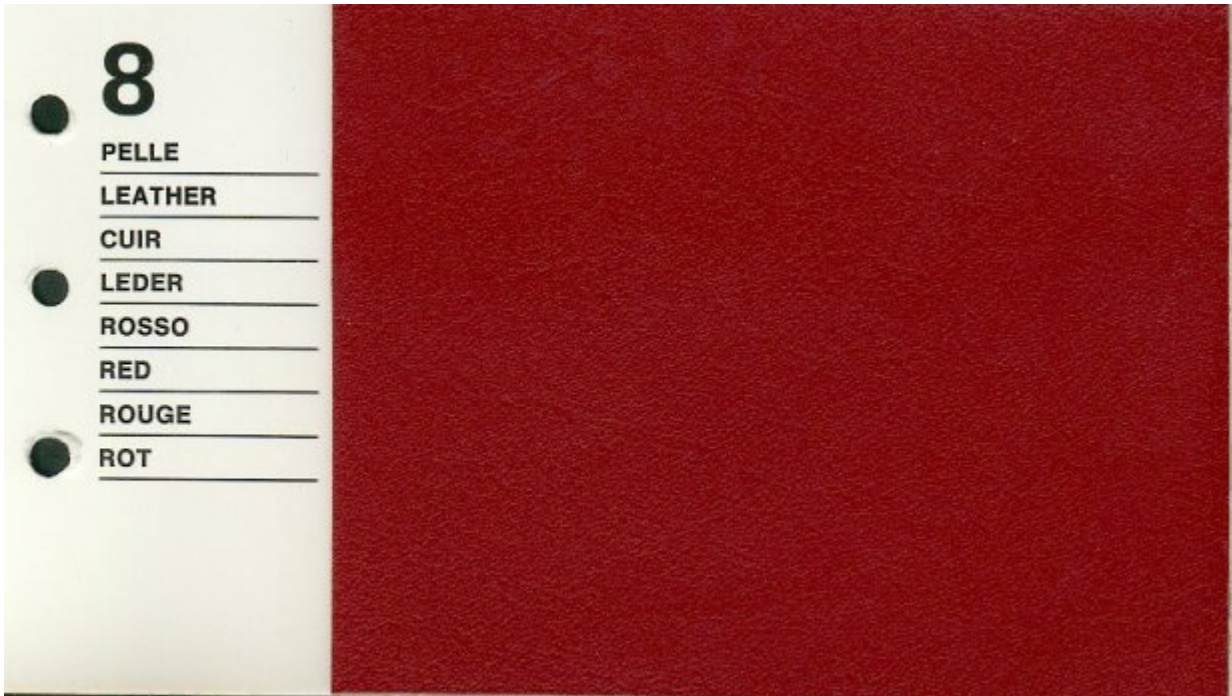
Name (I/E/F/D): Marrone Cuoio / Brown / Marron / Kastanienbraun



Interiors in Texalfa, Leather and Velvet: 8 - Pelle Rosso

Color scheme: 8

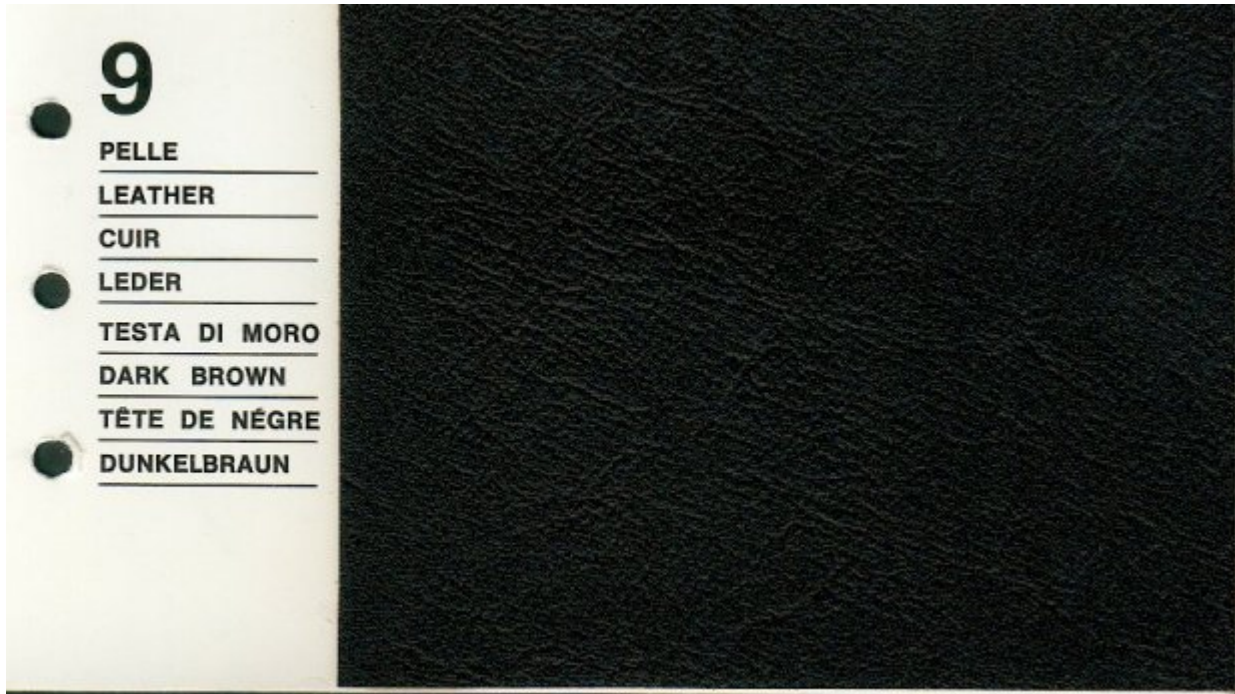
Name (I/E/F/D): Pelle Rosso / Red Leather / Cuir Rouge / Rotes Leder



Interiors in Texalfa, Leather and Velvet: 9 - Pelle Testa di Moro

Color scheme: 9

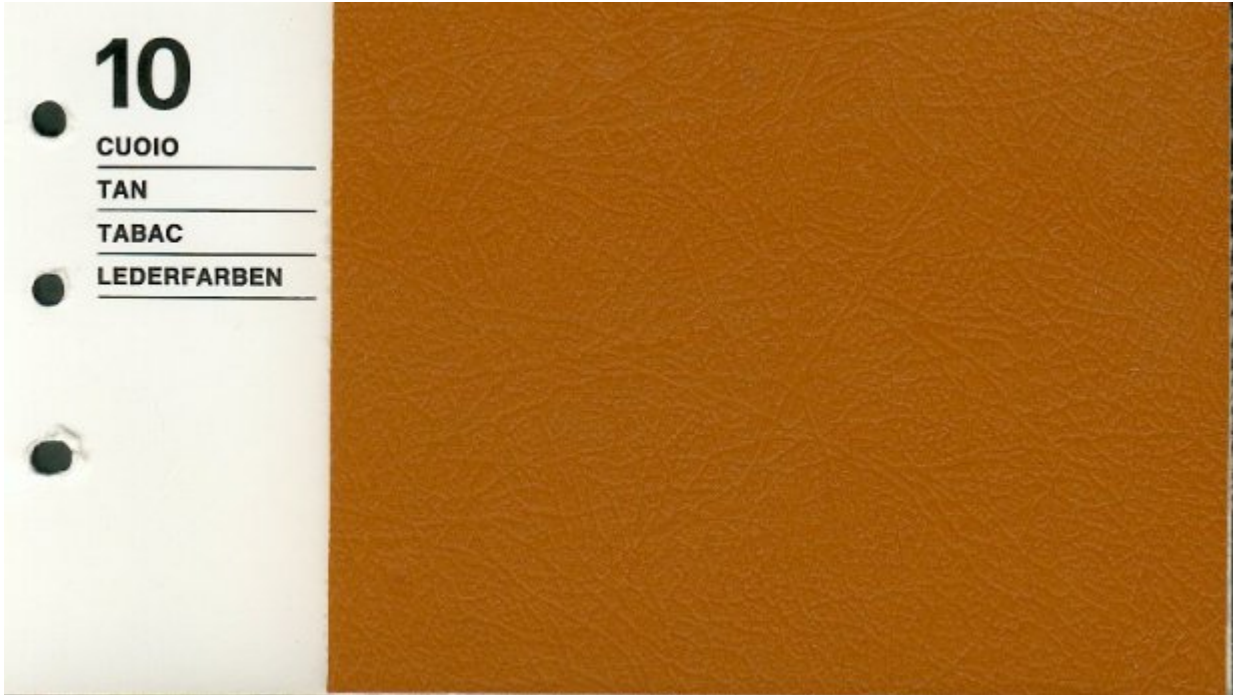
Name (I/E/F/D): Pelle Testa di Moro / Dark Brown Leather / Cuir Tête de Nègre / Dunkelbraun



Interiors in Texalfa, Leather and Velvet: 10 - Cuoio

Color scheme: 10

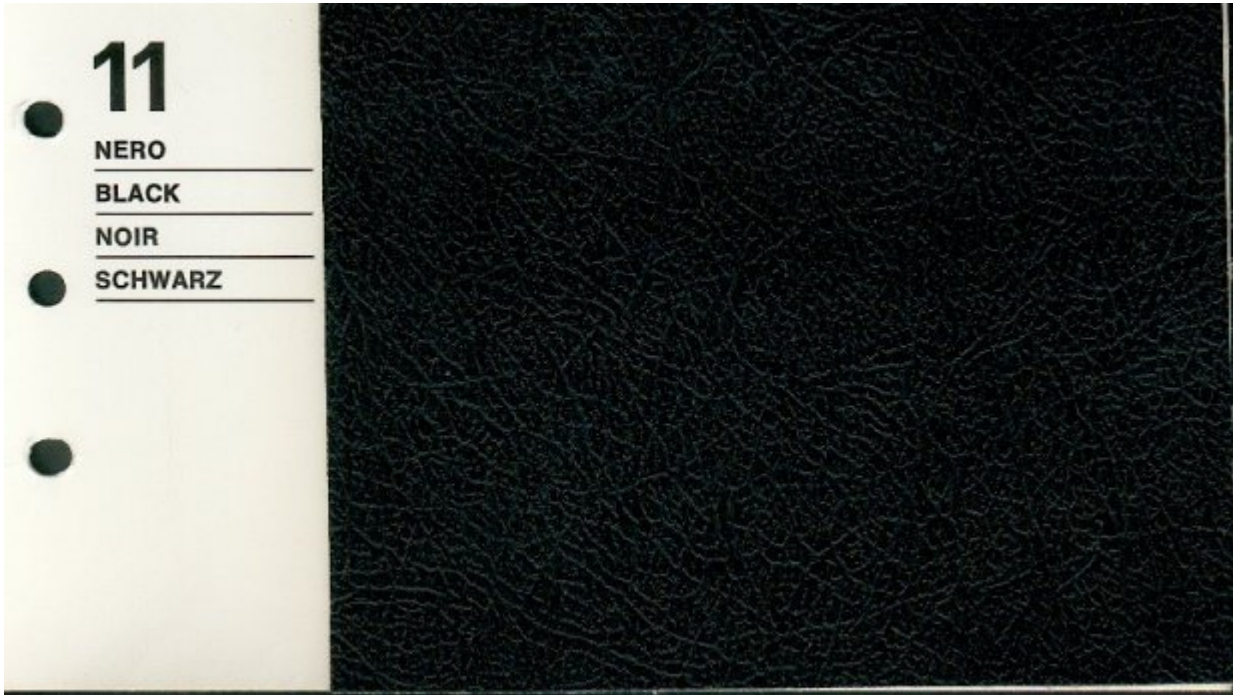
Name (I/E/F/D): Cuoio / Tan / Tabac / Lederfarben



Interiors in Texalfa, Leather and Velvet: 11 - Nero

Color scheme: 11

Name (I/E/F/D): Nero / Black / Noir / Schwarz



Interiors in Texalfa, Leather and Velvet: 12 - Cinghiale Maremma

Color scheme: 12

Name (I/E/F/D): Cinghiale Maremma / Maremma Pigskin / Havane Foncé / Wildschweinbraun

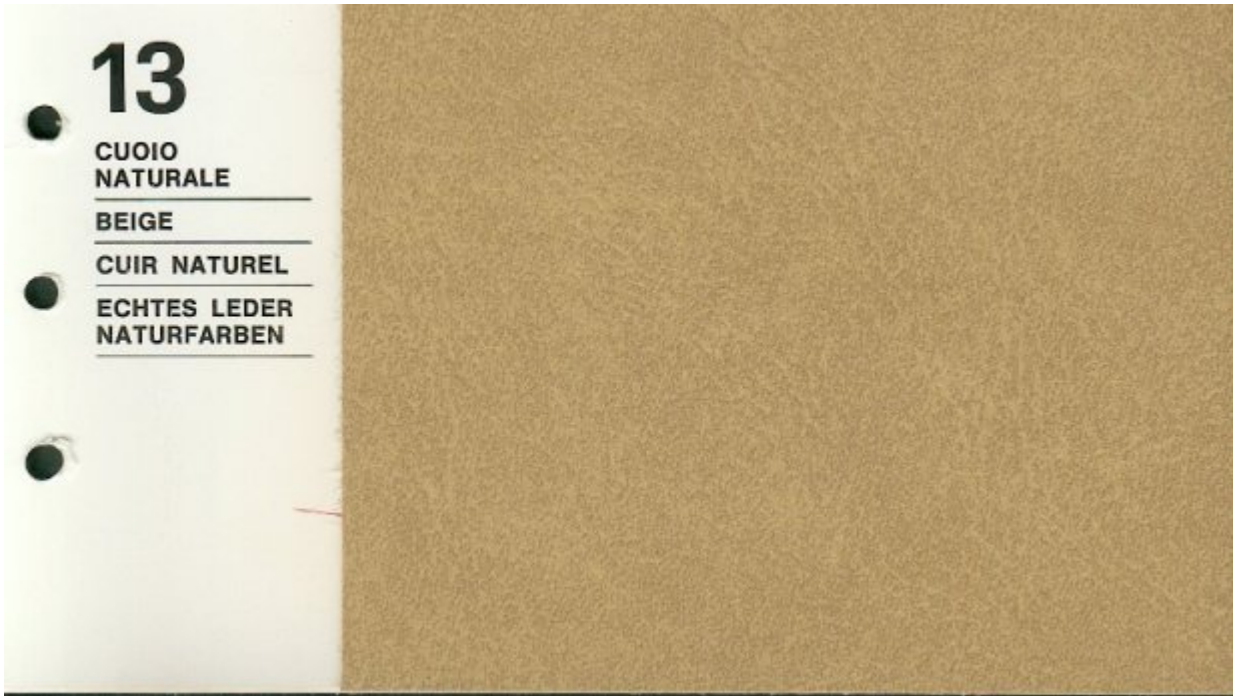
Note: "Maremma" means "marsh" or "swamp" and "Cinghiale " means "wild boar".
Interestingly, the French name means something completely different ("cinghiale" translates to "sanglier").



Interiors in Texalfa, Leather and Velvet: 13 - Cuoio Naturale

Color scheme: 13

Name (I/E/F/D): Cuoio Naturale / Beige / Cuir Naturel / Echtes Leder Naturfarben

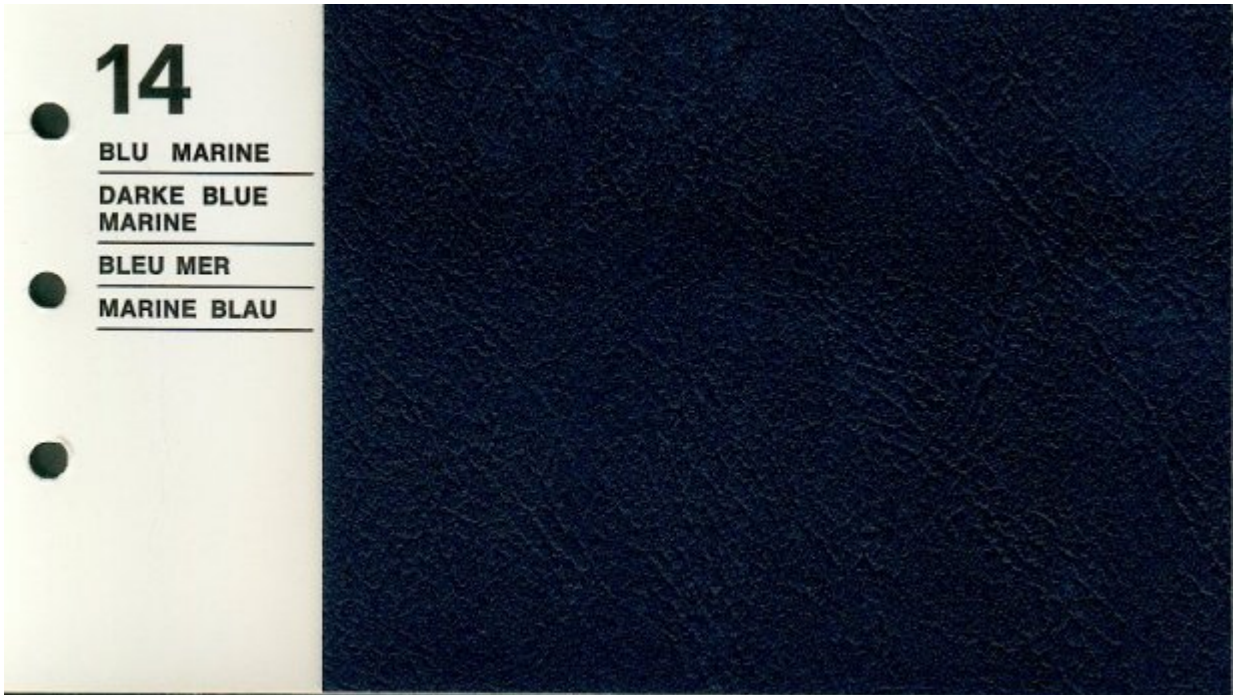


Interiors in Texalfa, Leather and Velvet: 14 - Blu Marine

Color scheme: 14

Name (I/E/F/D): Blu Marine / Dark Blue Marine / Bleu Mer / Marine Blau

Note: Color schemes 14 and 15 have the same names.



Interiors in Texalfa, Leather and Velvet: 15 - Blu Marine

Color scheme: 15

Name (I/E/F/D): Blu Marine / Dark Blue Marine / Bleu Mer / Marine Blau

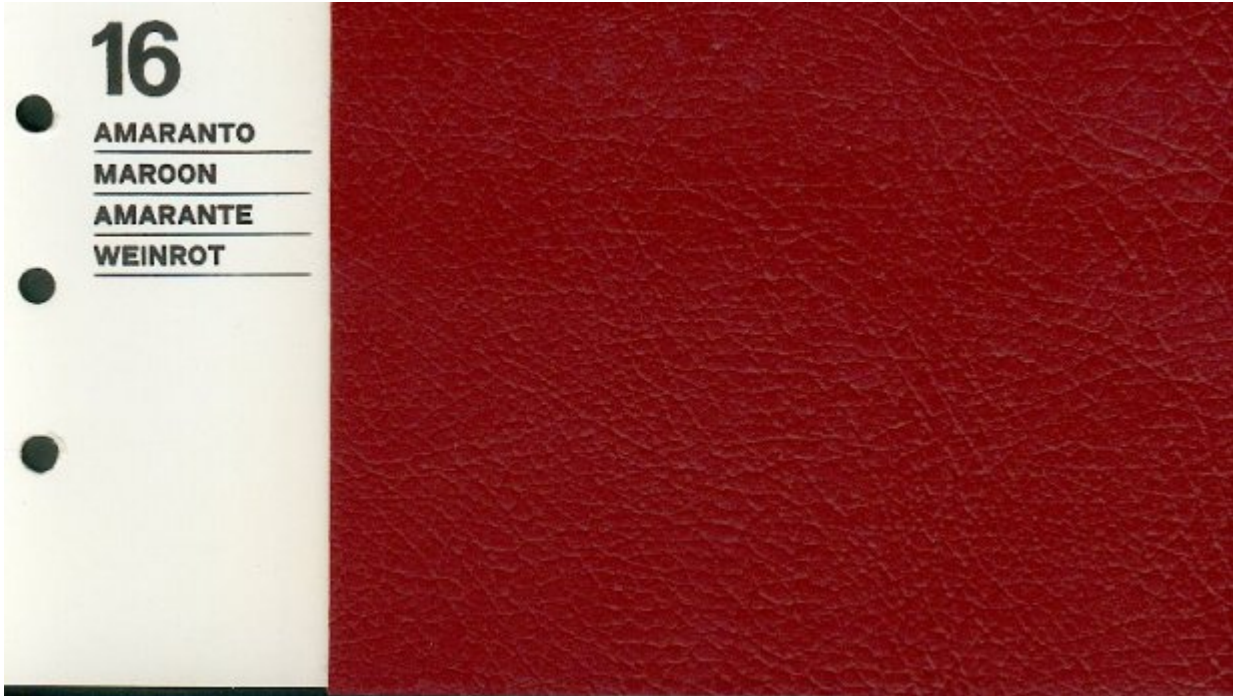
Note: Color schemes 14 and 15 have the same names.



Interiors in Texalfa, Leather and Velvet: 16 - Amaranto

Color scheme: 16

Name (I/E/F/D): Amaranto / Maroon / Amarante / Amarantorot



Interiors in Texalfa, Leather and Velvet: 17 - Blu

Color scheme: 17

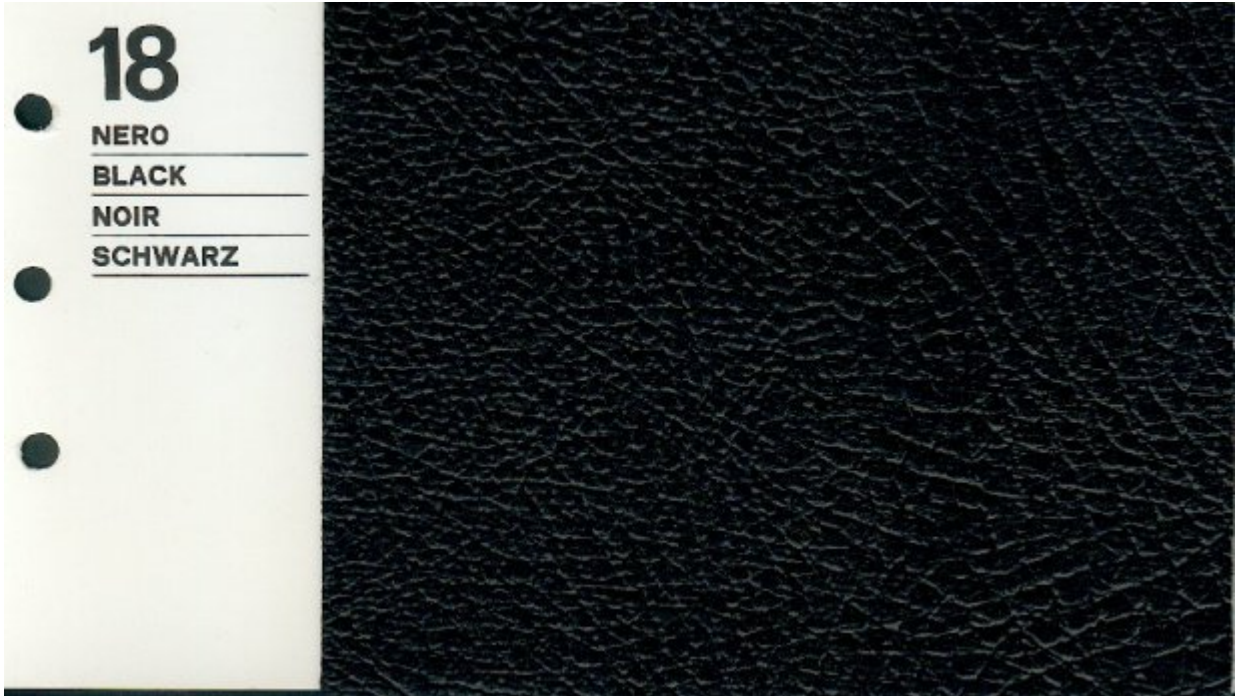
Name (I/E/F/D): Blu / Blue / Bleu / Blau



Interiors in Texalfa, Leather and Velvet: 18 - Nero

Color scheme: 18

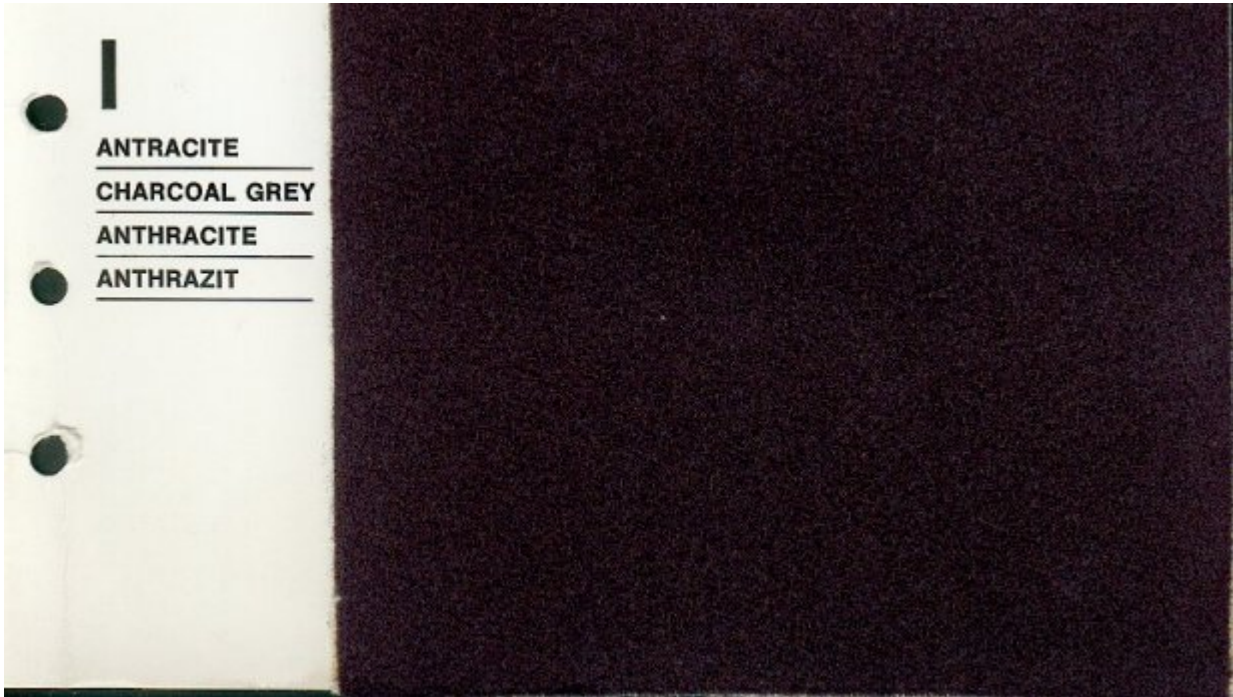
Name (I/E/F/D): Nero / Black / Noir / Schwarz



Interiors in Texalfa, Leather and Velvet: I - Antracite

Color scheme: I

Name (I/E/F/D): Antracite / Charcoal Grey / Anthracite / Anthrazit



Interiors in Texalfa, Leather and Velvet: II - Nocciola

Color scheme: II

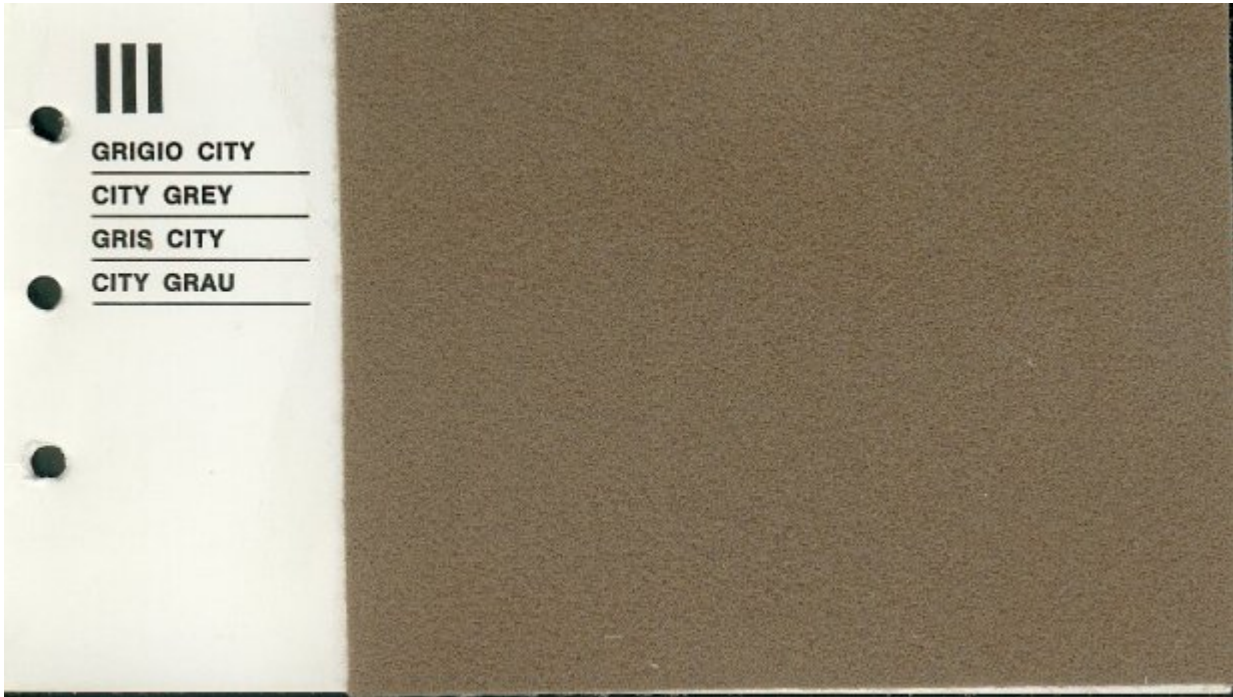
Name (I/E/F/D): Nocciola / Nut Brown / Noisette / Haselnuss



Interiors in Texalfa, Leather and Velvet: III - Grigio City

Color scheme: III

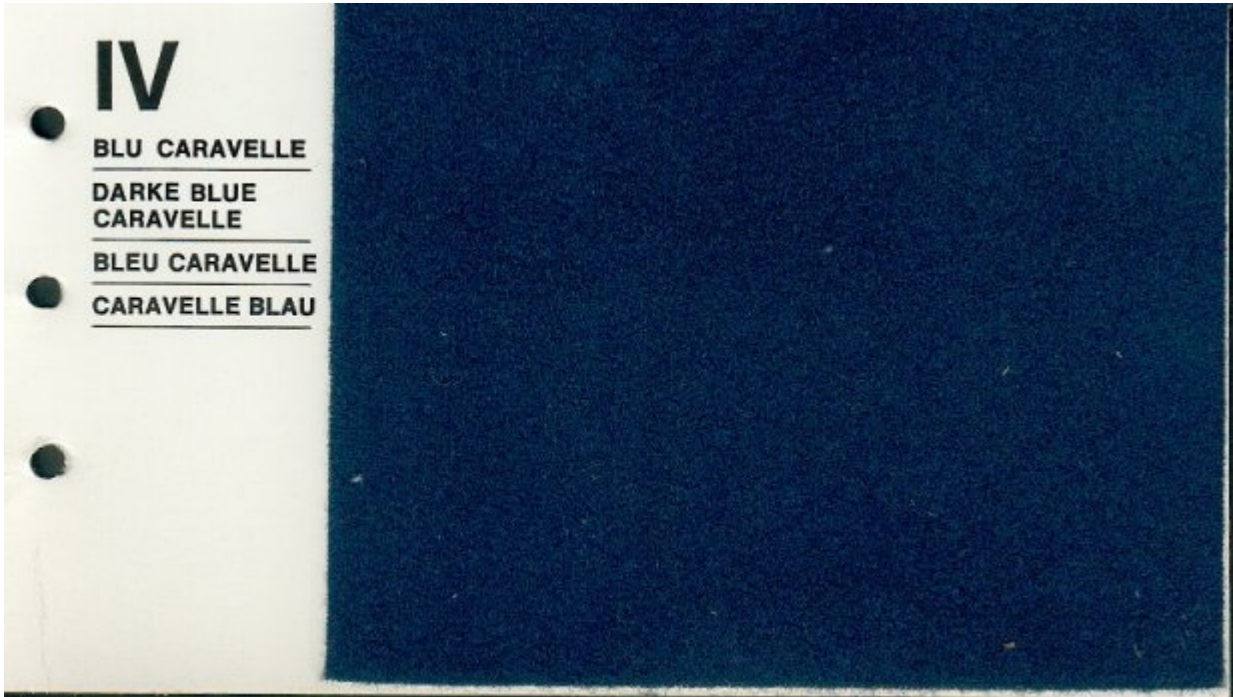
Name (I/E/F/D): Grigio City / City Grey / Gris City / City Grau



Interiors in Texalfa, Leather and Velvet: IV - Blu Caravelle

Color scheme: IV

Name (I/E/F/D): Blu Caravelle / Dark Blue Caravelle / Bleu Caravelle / Caravelle Blau



Made In Italy by A. MACCHI & C. - Milano
PLASTICROM - Milano
