

1.26N Machine printed tickets (Sept 2013)

Ticket Issue Machine (TIM)

The following relates to these machines initially used on government buses in NSW from 1951.

TIM Model 3, 1d-4/11d. Imported from UK via TIM agents in Bentleigh Vic. Whole ticket printed in purple on strip, value dialled by driver or queue conductor¹, includes route and section (001-009) for bus or day/hour code (11-99) for queue conductor. The code at left signifies O= ordinary, F= combined ferry ticket, 2/W= child's two way ticket, C= concession, T= transfer ticket, R= return ticket.

They were also used by the following private operators (**bold** indicates examples seen): **Bosnjak Edensor Park, Blue & Red Buses Murwillumbah, Mylon's Busways Albury-Wodonga, Fogg's Bus Service Singleton.**

West Bankstown Bus Service is known to have used both titled and untitled² TIMs- see the examples illustrated.

Some operators used the generic wording "Passenger Services": see the chapter on OPA generic tickets for details. In all cases the machine number (indicated in the illustration) should tie a machine to an operator. West Bankstown Bus Service is an example.

*Ultimate machine (Bell Punch)*³

The following relates to the first use of these machines by the government in 1949: 5 value machine issuing pre-printed tickets, could be issued in multiples. Imported from Bell Punch (UK) via Australian Agents Control Systems A/Asia Pty Ltd. Day/hour code & number printed in black within base of ticket. Not transferable details on back. Tickets printed in black on colour with coloured value and issued in reels. Initially used by beret girls (queue conductors) from November 1949.

The only private operators known to have used them are the **Eastwood Bus Co** and Glenorie Bus Co. Generic Ultimates inscribed "Transport Services" of Victorian origin *may* have been used in NSW- see the chapter on OPA generic tickets for details.

*Solomatic machine (Bell Punch)*⁴

A later version which was installed in buses was the Solomatic machine, capable of dispensing 6 values. Unlike the Ultimates which were issued in reels, the Solomatics came as folded strips of 4. These were generally introduced from 1964 and while there is no printer name on the ticket it is likely that they were produced by Lamson Paragon, the successors to Control Systems. Of particular note is that the value is indicated by an overprint in a different colour and often inverted in relation to the black print on the ticket.

¹ Generally these were female beret girls.

² Ian Manning, "Urban bus tickets in NSW", *Fleetline* 76 states these were generally second hand with filed titles (ie, missing letters) on their printing plates.

³ Commenced 1949 with "beret girls".

⁴ Commenced 1949 with "beret girls".

Background paper stock can vary enormously. Later types were denominated in sections rather than cents. A few examples are known of return or pensioner use. When introduced in the late 1960s these machines caused a strike of bus operators in Wollongong, but they lost the arbitration case.⁵ 106 machines were purchased by the Wollongong operators.

The following private bus operators are known to have used Solomatics (**bold** indicates actual examples seen)- see the listings in Vols.1&2 for details:

Titled Solomatics

Sydney **Barklmore Merrylands, Bass Hill Bus Service, Blacktown Bus Co, Bosnjak Edensor Park, Bowermans Bus Service St Marys, Calabro Bros Bonnyrigg, Campbelltown Transit Co, Chester Hill Bankstown Bus Service, Cumberland Coaches Rydalmere, Delwood Bus Co Granville, Forest Coach Lines Belrose, Merrylands Bus Co, Hadfield Engadine, Hammonndville Bus Service, Harris Park Transport, Ingleburn Bus Service, Holsworthy Bus Co, Hornsby Group, Hunters Hill Bus Co, Ingleburn Bus Service, Lowes Bus Service Alexandria, McVicar, Merrylands Bus Service (Route 171), Oliveri Transport Liverpool, Palmers Bus Service Blacktown, Parramatta Bus Co, Parramatta-Ryde Bus Service, Parramatta Villawood Bus Service, Penrith & District Bus Service, Rowe's Bus Service Plumpton⁶, St Ives Bus Service, Seven Hills Bus Co, Stone Bros Auburn, Sutherland Bus Service Gynea⁷, Toongabbie Buses, Tuck Lee Bros Blacktown, Western Road Bus Service Wentworthville**
Country Hills Wollongong, Keiraville Bus Service, Surfside Buslines Tweed Heads⁸, Tamworth Bus Lines⁹

There were also generic Solomatics issued by the OPA (later BCA) which had only generic wording "Must be paid...". See the chapter on OPA generics for details. Noteworthy is that the Wollongong & District Bus Owners Assoc. had this name on their generic Solomatics.

Generic Solomatics

Sydney: Cleary Bros Parramatta, Deane Group, Evans Bus Service Fairfield, Forest Coachlines Belrose¹⁰, Milperra Bus Service, Pattison's Bus Service Chester Hill, **St Ives Bus Service, Toongabbie Buses, Bankstown-Eldridge Rd Bus Service**
Wollongong Bus Owners: **Rutty's Bus Service Figtree,**
Country: **Watt & Penniston Wollongong, Roberts [Brisbane Water] Coaches**

In decimal currency, there are three types of values for both titled and generic Solomatics:

A- italic 'c' (Type 5)

B- sans serif 'c' (Type 6)

C- sans serif 'c' but much bolder (Type 7)

⁵ Magor collection, newspaper clippings on Rutty's (Wollongong) file.

⁶ Also seen used by Campbelltown Transit and Parramatta Villawood

⁷ but part of Harris Park Transport

⁸ inverted blue values Type 5 3c orange, 4c green, 5c grey, 20c buff

⁹ red outline value (Type 2) 1/- grey; blue inverted values Type 5 unless stated 2c off white, 5c purple (Type 6), 7c green, 12c purple, 60c grey, \$2.50 brown

¹⁰ Also used titled Solomatics. Generics may have been supplied in an emergency or to avoid a small print run.

Setrtight Speed

There were very few of these machines used in NSW, mainly in the 1960s. They were untitled and their tickets were produced on either stock or blank rolls.¹¹

Almex machines

All details printed by machine. Used by government buses from 1968 and also on private buses. The Bus & Truck Museum has an example of an Almex Model A with brochure. Private types generally had the generic inscription “Passenger Services” and can only be tied to an operator by machine number (centre right of ticket). The following private operators are known to have used them (**bold** indicates actual examples seen):

Sydney **North & Western Coaches, Palmers Bus Service Blacktown, Pearce Omnibus Springwood**, Tuck Lee Bros Blacktown

Country **Green’s Thirroul, Hills Bus Service Fairy Meadow**, John J Hill Bus Service Wollongong, **Hills Bus Service Fairy Meadow**, Richter Bros Woy Woy, **Roberts Bus Service (Brisbane Water Coaches)**, Blue Ribbon Singleton, Sid Fogg & Sons Fullerton Cove [Newcastle], Johnson’s Motor Service Edgeworth, Toronto Bus Service, White & Levy (Buladelah Bus Service)

Titled Almex **Raymond Tours**



Almex Microfare 2 used by Ulladulla Bus Lines

Sharp

A Japanese machine, much like a cash register minus the cash drawer, introduced 1979. Stock title is “thank you”. Known to have been used by: Bosnjak (1980 experimented with titled Sharp then went to TIM in 1981), Ingleburn Bus Service Route 102 (Ultimates till 1980 then stock Sharp), Lever Bus Service Queanbeyan (titled Sharp), Liverpool Transport Co (stock Sharp), Neville’s Bus Service Casula/Liverpool (untitled Sharp replaced flimsy section style tickets in 1980), Peakhurst Bus Co (fareboxes till 1980 then titled Sharp).

Unknown machines

The following examples are known:

Brisbane Water Coaches & Peninsula Bus Lines

Datafare types (see also Sydney)

¹¹ Ian Manning “Urban bus tickets in NSW”, *Fleetline* 76.

Similar to State Transit, many private companies introduced ink jet printers in the 1990s, largely replacing all other systems including flimsy tickets, Solomatics and other machine types. These are likely to be replaced by Smartcards in the future. Some examples are: **North & Western Coaches, Shorelink, Southtrans, Dion's Wollongong.**

See 1.5fN for details of computer machinery.

All of the following are black/white unless stated. Note that thermal paper often fades with exposure to light. For histories of these companies, see also their websites and the separate chapter 1.27N. Note that some former country areas are now outer metropolitan- see 2.14N.

Blanch's See 1.12.1

Blanchs Bus Company
www.blanchs.com.au or
66862144 (24 hr)

CANCELLATION

09/04/08 09:57
09:48 640
0000000137 0031

CURRENT: Byron CBD
DESTINTN: M High Sch
CANCLD TKT 03656
TIME 09:57

CANCELLATION

Adult \$ 3.00
Party sin CASH REFUNDED

CANCELLATION
TICKET NUMBER
03657

BLANCH'S
BUS SERVICE

INVOICE
SINGLE
15/10/04

TO: [faded]
FROM: [faded]

AMOUNT: \$100.00
TAX: \$10.00
TOTAL: \$110.00

PAID BY: [faded]

REMARKS: [faded]

Blue Mountains Bus Co See 2.4
As before. Used on rte 686 Trolley Bus.



(02) 4751 1077
00034123 000000020303

02Apr14 16:51

PET Count

Pensioner

Keep until end of trip

From:

atoomba St Carrington

Route:686-1 [Out]
Trip :16135 Oper:9216
Dvr :6006 Bus:003726

Blue Ribbon See 1.15.69

BLUE RIBBON

CANCELLATION

20/10/04 11:54
11:54 183
0000002051 0017

CURRENT: Rutherford
DESTIN: Greenhills
CANCLD TICKT 08881
TIME 11:54

CANCELLATION

Adult \$ 4.40
Single CASH REFUNDED

CANCELLATION
TICKET NUMBER
08882

Ballina Buslines 13

Ballina Buslines
Tel: (02) 6686 3666
ABN 99 000 016 339
www.ballinabuslines.com.au

Transfer 102

6 Trip 730
Bus 0 Route 662
Mau 13105716 Shift 25
Drv 4

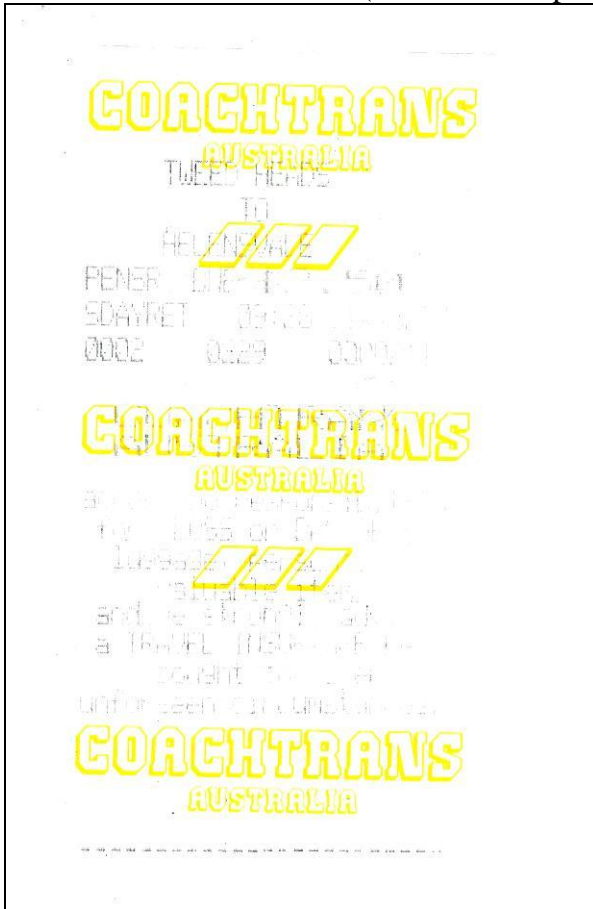
FROM: 54 Shelley Be
TO: 1 Lismore CBD

Adult \$ 9.70

TRAINING
05/11/13 12:32

VALID FOR TRAVEL
ON DAY OF ISSUE ONLY

Coachtrans Tweed Heads (Connexion airport transfers) 23



yellow underprint

Deane's Buslines See 1.21.2



Phone: 0896 1477
400-800-8888

Route 790

Bellevue to Eden
Eden to Bellevue

Fare: Adult Single \$6.50

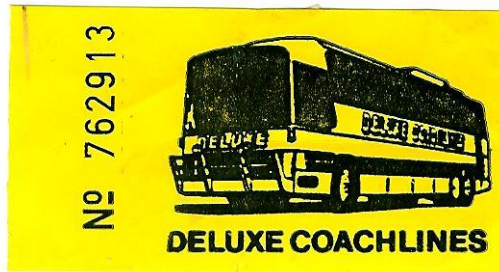
From Stop 601

Eden

To Stop 604

Bellevue

Time 11:45
Date Tue, 12 Oct 04
ABN 30 003 880 167
(G.S.T. Included)



Edwards Coaches Armidale since 1957. 14



Eggin's Comfort Coaches 13

Eggin's Comfort Coaches

Ph: 6552 2700 ABN: 26 651 519 322

TKT00345 D00009

22/10/13 7:57:31

Route 314/32 #0387

From:

Old Bar S11

To:

Taree

RED

Single

Expires

22/10/13

CASH

\$ 2.50

Ticket price includes GST

Thank you for your patronage

Ticket valid date of purchase only

Fearnese Bus Service See 1.19.9

UQ°VGWff`axwxxxxCCx*CCCCCCCCCCCC Sing
le
VIP \$ 0.00
Fearnese Depot
To
Fearnese Depot
R 45 T 262 D 43 B 9184
Tkt:5309
09/04/08 07:39
Fearnese Coaches
ABN: 67 000 503 837
Tax Invoice
Phone: (02) 6921 2316
Price includes GST
Travel with Fearnese Coaches

Forster Bus Service See 1.13.3

Too faint to illustrate

Hunter Valley Coach Co See 1.15.34

5737 7 To 8 Child \$8.90
208781 905 9661 2 110PR08 08:28

Inverell Bus Service 14

INVERELL BUS SERVICE

Why walk when you can catch the bus!

Tel: 0/22 5598 www.inverellcoaches.com

TKT00235 000004

28/10/13 12:37:29

Route 471/30 #3190

From:

Section 1

To:

3 Sections

RED

Single

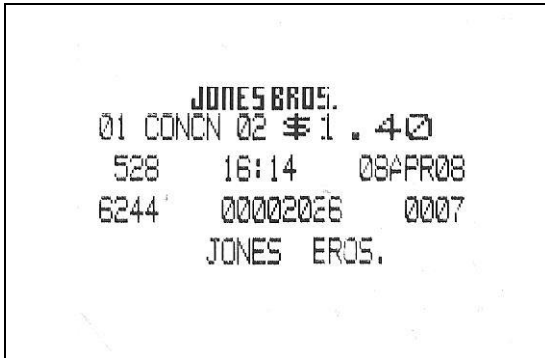
CASH

\$ 2.50

Ticket price includes GST

Thank you for your patronage

Jones Bros See 1.10.5

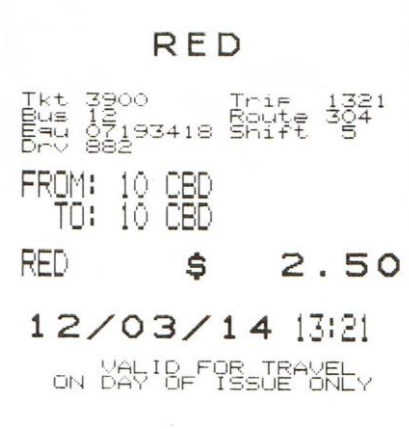


Jones Bros (Lithgow)

As before

Lithgow Buslines 10

Lithgow Buslines
Tel: (02) 6352 3888
ABN 93 001 785 897
www.lithgowbuslines.com.au



Martin's See 1.19.1

URANA & BREEN
PENS 04 \$1.70
LAVI 15:20 08APR08
FOR TIMETABLE DETAILS
VISIT OUR WEBSITE
www.martinsalbury.com.au

Mountainlink (Pearce) See 2.4

SPECIAL
TICKET \$5.00
015 12:02 0480595
3183 00000010 0002
MOUNTAINLINK
KATOONBA LEURA BUS
SERVICE (047) 82 3333

Orange Buslines See 1.10.8

ORANGE
BUSLINES
Phone: - (02) 6362 3197

01 RED250.33 \$2.50

FROM CITY CENTRE
TO CLOVER HILL

07:28 533 04FEB09
0000 00000099 0001

Parsons Bus & Coach Murwillumbah 1986- 23

Parsons Bus & Coach
Murwillumbah
Phone 02 6672 2353

IKT00072 000243
10/04/08 16:54:04
Route 616/1 #0154
From:
Section 1
To:
Section 15
Concession
Pensioner
Single
Expires
 10/04/08
CAs \$ 3.00
Ticket price includes GST
Thank you for your patronage

Peninsula Bus Lines See 1.9.22



Priors Motor Service since 1960 Bateman's Bay 20

PENSR \$02.70
Rt: 780 10001 M0004 0032
01 May 68 Tok:4289 13:41
THANK YOU FOR TRAVELLING
PRIORS BUS SERVICE
TEL. 44 72 4040
..PLEASE RETAIN TICKET..

Ryans Started Coffs Harbour 1943.
Same as Parsons

Red Bus Services 9

Red Bus Services
131 500
00022815 000000020248
30Nov13 10:16
PET Count
Pensioner
Keep until end of trip
From:
CC Hwy before Dane Dr
Route:22-17 [In]
Trip :09:12 Oper:3936
Vr :253 Bus:000045

Sawtell Coaches Toormina, Coffs Harbour 1985- 16

**Sawtell
Coaches**

Phone: (02) 6653-3344

TKT00094 D25266

21/04/08 9:45:43

Route 363/1 #0869

From:

Section 1

↳

Section 8

Concession

Single

CASH \$ 3.00

Ticket price includes GST

Thank you for your patronage

Surfside

Seen with yellow underprint.

Shoal Bus 20

Shoal Bus
PASSENGER TICKET

Date of issue:...../...../.....
 Fare: Student
 Child/Concession
 Adult
 Amount: \$.....
 Sections Travel:.....
 Run ID:..... Return / One Way

1601

Shoal Bus
PASSENGER TICKET

Date of issue:...../...../.....
 Fare: Student
 Child/Concession
 Adult
 Amount: \$.....
 Sections Travel:.....
 Run ID:..... Return / One Way

1601

RED
REGIONAL EXCURSION DAILY

Date of Issue / /

Fare: \$2.50 RED TRANSFER

Sections Travel

Nº 1801


RED
REGIONAL EXCURSION DAILY

Date of Issue / /

Fare: \$2.50 RED TRANSFER

Sections Travel

Nº 1801



TKT00297 D00088
 25/10/13 15:31:44
 Route NorthN/10206 #0263
 FROM: **Bridge**
 To: **Nth Nowra**
Red
Single
Expires **25/10/13**
CASH \$ 2.50

Thank you for travelling with
 Shoal Bus - your locally owned
 public transport provider



Tamworth Buslines 14

Tamworth
BUS LINES
Tel: (02) 6762 3999
ABN 99 000 016 339
www.tamworthbuslines.com.au

RED

Ticket 186

Bus 25 Trip 08:38
DnV 4 12070759 Route 433
Shift 13

FROM: 10 CBD
TO: 56 Longward

RED \$ 2.50

TRAINING

21/10/13 08:39

VALID FOR TRAVEL
ON DAY OF ISSUE ONLY

Toronto Bus Service See 1.15.82

01 CONCN \$0.90 09:10 03
0271 SECTION 3 0010
9165 Toronto Bus 16APR97

Ulladulla Bus Lines 20

Almex Microfare 2

R*E*D \$02.50
Rt: 740 J0001 M1191 D0001
28 Oct 13 Tok:4634 13:13
UBL 44551674
RED TICKETS
AVAILABLE
DATE OF ISSUE ONLY

Rural and regional operators

(Transport for NSW website, 4.10.2013)¹²

Aberdeen	see Muswellbrook
Albury	F&R Martin P/L ¹³ Mylon Motorways P/L
Alstonville	see Ballina
Arakoon	see Kempsey
Armidale	Edwards Coaches P/L
Arrawarra	see Coffs Harbour
Ballina	B&E Blanch P/L ¹⁴ , also Bangalow, Brunswick Heads, Byron Bay, Lennox Head, Mullumbimby Buslines Group (Ballina) P/L, also Bangalow, Broadwater, Brunswick Heads, Byron Bay, Casino, Clunes, Evans Head, Mullumbimby Tenterfield, Alstonville, Buladelah
Bangalow	see Ballina
Banora Pt	see Gold Coast
Batemans Bay	Priors Bus Service P/L ¹⁵
Bathurst	Buslines Group (Bathurst) P/L
Bega	Southern Cross Motor Coaches P/L Daly Bus Services P/L ¹⁶ Sapphire Coast Buslines ¹⁷
Bendemeer	see Tamworth
Berry	see Nowra
Blayney	J&P Newman
Bogangar	see Murwillumbah
Bomaderry	see Nowra
Boomi	Reynolds & Fogarty P/L
Breeza	see Gunnedah
Broadwater	see Ballina
Buladelah	see Ballina Busways (Great Lakes), also Kendall, Karuah
Bungay	see Forster
Camden Head	see Grafton
Casino	Kellam Bus Lines P/L
Clunes	see Ballina
Coffs Harbour	Busways North Coast P/L, also Kempsey, South West Rocks, Wauchope, Camden Head, Port Macquarie Nasrella (Ryans Bus Service), also Red Rock, Safety Beach, Woolgoolga, Arrawarra

¹² Single, adult, concession, RED and school fares are offered by most. Footnotes list **other** fare types shown on websites.

¹³ Return, 10 trip.

¹⁴ Return, Daily Freedom pass, Weekly Freedom pass

¹⁵ Weekly

¹⁶ Not listed 11.13

¹⁷ SCB Card, prepurchase of tickets x10 x20 x50

	Darlea P/L (Sawtell Coaches)
Coledale	see Tamworth
Coolamon	Allen's Coaches Coolamon P/L
Cooma	Cooma Coaches P/L
Coomba Pk	see Forster
Corindi Bch	see Grafton
Corowa	J Cann P/L
Crookwell	Crookwell Bus Service P/L
Curlewis	see Gunnedah
Deniliquin	Purtill Bros Nominees P/L
Denman	see Muswellbrook
Diamond Bch	see Forster
Dorrourghby	J&A Sodhi (Dunoon Bus Service)
Emmaville	see Glen Innes
Evans Head	see Ballina
Forbes	Monolat P/L
Forster/Tuncurry	Forster Bus Service, also Gloucester, Green Point, Nabiac, Smiths Lakes, Wingham, Bungay, Coomba Pk Eggins Holdings P/L, also Kendall, Lansdowne, Manning Pt, Taree Wingham, Diamond Bch, Harrington
Glen Innes	M Jillett, also Emmaville
Gloucester	see Forster
Gold Coast/Tweed Heads	Surfside Buslines P/L ¹⁸ , also Kingscliff, Pottsville Beach Banora Pt
Goulburn	Mojeto P/L
Grafton	Nasrella P/L (Ryans Bus Service), also Corindi Bch Moxamu P/L (Lawrence Bus Service), also Lawrence, Maclean Busways North Coast P/L also Harwood Is, Iluka, Laurieton, Maclean, Yamba
Green Point	see Forster
Grevilla	J Watson & Son P/L
Griffith	Buslines Group (Griffith) P/L
Gunnedah	Hopes Bus Service P/L Lusuli P/L (Millerds Bus Service), also Breeza, Curlewis
Harwood Is	see Grafton
Harrington	see Forster
Hawkes Nest	see Grafton
Iluka	see Grafton
Inverell	Inverell Bus Service P/L Brante P/L (Symes Coaches), also Tingha
Junee	Junee Buses P/L
Karuah	see Buladelah
Kempsey	see Coffs Harbour CA & V Cavanagh P/L ¹⁹ , also Arakoon

¹⁸ Qld routes= G card, NSW= off peak, weekly

¹⁹ Freight

Kendall see Forster, Buladelah
 Kiama Pheasant P/L (Kiama Coaches)
 Kingscliff see Gold Coast
 Krumbach see Taree
 Kyogle see Lismore
 J Watson & Son P/L
 Lansdowne see Forster
 Lauriton see Grafton
 Lawrence see Grafton
 Lennox Head see Ballina
 Buslines Group P/L (Ballina)
 Lismore Buslines Group (Northern Rivers), also Kyogle
 M&C Quinn, also Terania Ck
 GA Waller P/L (Waller's Bus Co), also Nimbin
 J&A Sodhi (Dunoon Bus Co)
 Lithgow Buslines (Lithgow)
 Macksville see Grafton
 Maclean see Grafton
 Manilla see Tamworth
 Manning Pt see Forster
 Mildura Sunraysia Bus Lines P/L
 Moama Vic F&R Ind (Newtons Bus Service)
 Moree Reynolds & Fogarty P/L
 Mudgee E&F Ogden (Ogden's Coaches)
 Mullumbimby see Ballina
 Murwillumbah Surfide Buslines P/L
 Bhangala P/L (Singh's Bus Service), also Numimbah
 Murwillumbah Bus Co, also Snake Creek
 J&S Parsons (Parsons Bus Service), also Pottsville Beach, Bogangar
 J&S Singh-Gosel, also Nimbin
 Muswellbrook R Osborn P/L, also Aberdeen, Scone, Denman
 Nabiac see Forster
 Nambucca Hds see Grafton
 Narooma L&L Symons
 Murrays Aust P/L
 Narrabri RB Wolters P/L
 Nimbin see Lismore, Murwillumbah
 Nowra J&C Kennedy
 Nowra Coaches P/L (Shoalbus), also North Nowra, Shoalhaven Heads
 Sussex Inlet, Berry, Bomaderry
 Stuarts Coaches P/L
 North Nowra see Nowra
 Numimbah see Murwillumbah
 Orange Orange Buslines
 Pambula Deanes Travel P/L
 Parkes Western Road Liners P/L

Picton Picton Buslines P/L
 Port Macquarie see Coffs Harbour
 Pottsville Beach see Gold Coast, Murwillumbah
 Queanbeyan/Captain's Flat S Radburn
 Quirindi see Tamworth
 Red Rock see Coffs Harbour
 Safety Beach see Coffs Harbour
 Sawtell Darlea P/L (Sawtell Coaches), also Toomina
 Scone see Muswellbrook
 Shoalhaven Heads see Nowra
 Smiths Lakes see Forster
 Snake Creek see Murrwillumbah
 South West Rocks see Coffs Harbour
 Sussex Inlet see Nowra
 Tamworth Buslines group P/L (Tamworth), also Werris Ck, Bendemeer
 Hannafords Coaches P/L, also Westdale, Coledale
 Taree see Grafton, Forster
 Tinonee Bus Co²⁰, also Krambach, Tinonee
 Tenterfield see Ballina
 Terania Ck see Lismore
 Tingha see Inverell
 Tinonee see Taree
 Toomina see Sawtell
 Ulladulla Ulladulla Bus Lines P/L
 Urbenville J Watson & Son P/L
 Urunga see Grafton
 Wagga Wagga Fearn Investments P/L > Babout
 Wauchope see Coffs Harbour
 Werris Ck see Tamworth
 Westdale see Tamworth
 Wingham see Forster
 Woolgoolga see Coffs Harbour
 Yamba see Grafton
 Yass/Canberra Deanes Investments (ACT) P/L²¹

For a list of country operators to 2006 see *Bus operators in country NSW* Parts 1 & 2 by Vic Hayes & Richard Peck ("The Sydney Bus" parts 25 & 26, 2006).

Over the years Transport for NSW and its predecessors have provided integrated country public transport websites with the inclusion of Trip Planners.

See individual company websites (eg, Busways) for towns not included above.

²⁰ Return adult (no return concession)

²¹ as Qcity Transport (also Queanbeyan): Transborder Express discount card, Oakes Estate 1 way cash fare (as agreed with ACT govt).

Regional Excursion Daily (RED) tickets

Introduced 4.1.2009 these were the equivalent of the suburban Pensioner Excursion Tickets (PETs). These may be flimsy paper/card/machine issued as it was left to individual operators to arrange. T for NSW website²² April 2017 lists the following companies as issuing/accepting REDs:

Bhangala Singhs BS, Blanchs BS, Canns BL, Cavanaghs BS, Cooma Coaches, Edwards Coaches, Eggins Comfort Coaches, Forster BS, Gosels BC, Hannafords Coaches, Hopes BS, Inverell BS, M Jillett, Jonee Buses, Lansdowne BS, Martins Albury, Millerds BS, Murrays, Murwillumbah BC, Newmans BS, Nowra Coaches, Ogdens Coaches, Osborn BS, Parsons Bus & Coach, Picton BL, Purtills, Quins Coaches, Ryans BS, Sawtell Coaches, Stuarts Coaches, Symes Coaches, Symons Bus & Coach, Tinonee BL, Ulladulla BL, Wallers BC, Western Roadlines.

Also²³ Allens Coolamon, Ballina Group, Crookwell BS, Dalby BS, Deanes Investments (ACT), Deanes Travel, Fearnas Investments, F&R Ind, J Watson & Son, Dunoon BS, J&C Kennedy, Jones Bros BC, Kellams BL, Mojeto PL, Mylon Motorways, RB Walters, S Radburn, Reynolds & Fogarty, Southern Cross Motor Coaches.



Country fares as at 4.17 were by section (1) \$2.30 adult \$1.10 child/conc, (2) \$3.40 \$1.70, (3) \$4.30 \$2.10, (4) \$5.00 \$2.50, (5) \$5.70 \$2.80, (6+) \$6.00 \$3.00.

²² Under operators

²³ Under Opal- regional fares.

Example from Busways Port Macquarie website:

Tickets - Port Macquarie

Tickets are available in a number of forms, all of which are outlined below. If you are unsure on which ticket is the best deal for you simply ask your driver. You must retain your ticket and have it available for inspection until the end of your journey.

Single Ticket

This is the standard ticket available on all services. Please have the correct fare ready for the driver where possible.

Return Ticket

A return ticket is available on day of issue only.

Concessions

[Click here](#) to view concession passes accepted by Busways.

Regional Excursion Daily (RED) Ticket

The Regional Excursion Daily (RED) Ticket offers pensioners unlimited travel all day on most rural and regional bus services.

The \$2.50 RED Ticket is available to Busways North Coast passengers, providing multi ride travel within the local bus network for older citizens and pensioners.

The RED ticket is available from drivers to those who hold a valid Australian Government Pensioner Concession Card, NSW Seniors Card or War Widowers Card (NSW or Victoria).

This ticket allows multiple bus trips to be taken on your route bus network on the day of purchase.

Day Travel Tickets (Valid on day of issue only)

Day Tickets are an inexpensive way to explore the Port Macquarie region by bus, offering good value and convenience for unlimited local bus trips within a one day period on one ticket.

All day travel tickets can be purchased at any time of the day from our drivers when you board the bus. There are two types of all day travel tickets available:

Day Ticket for travel in Port Macquarie.

Out Town Ticket for travel to and from Laurieton and Wauchope.

Transfer Tickets

If it's not possible to complete your journey without transferring from one Busways bus to another, ask for a Transfer Ticket when boarding your first bus. This costs much less than buying two tickets. The transfer must be made to the first available bus with one and a half hours from when the transfer ticket was issued. Transfer tickets cannot be used for broken or return journeys.

Travel Ten Weekly Tickets

Ideal for trips you make regularly through the week, a Travel Ten ticket allows you to make ten trips between designated locations within a week for less than the cost of paying for each trip.

Term Pass for Students

Term Passes give students who are not eligible for a Busways School Free Travel pass the opportunity to travel to and from school without having the hassle of paying a fare every day. By buying a Term Pass the cost of travel is actually reduced! Please ring your local depot for prices.

This pass is convenient for those students who may live close to school but want to catch the bus, either all the time or occasionally, for example when it is raining.