



Innovation  
that excites

2016  
**MICRA**<sup>®</sup>

### NISSAN MICRA<sup>®</sup>

Isn't it time you were passionate about the car you drive? Welcome to the 2016 Micra<sup>®</sup>.

And follow Nissan Canada on:



Innovation  
that excites

#### visit [nissan.ca](http://nissan.ca)

Facebook<sup>®</sup> is a registered trademark of Facebook, Inc. Twitter<sup>®</sup> is a registered trademark of Twitter, Inc. YouTube<sup>®</sup> is a registered trademark of Google Inc. Instagram<sup>®</sup> is a registered trademark of Instagram, Inc.

All illustrations, photographs and specifications in this brochure are based on the latest product information. See actual vehicle for complete accuracy. Nissan Canada Inc. reserves the right to make changes at any time, without notice, in prices, colours, materials, equipment, specifications and models, and to discontinue models or equipment. For information on additional options and accessories, contact your Nissan Dealership. Registered trademarks are property of their respective owners.

At [nissan.ca](http://nissan.ca), you'll find a way to "build your own Nissan," a dealer locator, and more information about key Nissan support services. The Nissan names, logos, product names, feature names, and slogans are trademarks owned by or licenced to Nissan Motor Co. Ltd. and/or its North American subsidiaries. **Always wear your seat belt, and please don't drink and drive.** Printed in September 2015. Catalogue number: 99999-MIC16EN. © 2015 Nissan Canada Inc. All rights reserved.





**LIVE** boldly with Nissan Micra®. Break away from the pack (and the gas station) with impressive agility and awesome fuel economy. Say yes to European design, grab onto the leather-wrapped steering wheel, and shine on with chrome in all the right places. Take pride in the fact that you're in the winner of ALG's 2015 Canadian Residual Value Award! The 2016 Nissan Micra®. Regardless of your plans, you've made the right choice **FOR TODAY.**



Nissan Micra® SR shown in Red Alert.

\*ALG's Canadian Residual Value Award (RVA) for 2015 Micra®, category winner for City Car.





## INNOVATION THAT GIVES YOU MORE CAR AND MORE SAVINGS.

**6.6** L/100 km highway,<sup>1</sup> so you can breeze past the pump with ease

**.315** Drag coefficient, so Micra<sup>®</sup> moves through the air with less effort

**What if** you got to drive the car you loved, while saving fuel and reducing your carbon footprint? With Micra<sup>®</sup>, you get excellent fuel economy in a stylish, affordable car that's incredibly easy to drive. We got there by developing everything from exterior aerodynamics that slip through the wind, to a powerfully advanced 1.6-litre 4-cylinder engine, to a reliable, responsive 5-speed manual or 4-speed automatic transmission. And we made sure you'd have the power you need for lag-free, confident acceleration to make passing and highway driving effortless.

Micra<sup>®</sup> even achieved the best fuel economy among all internal combustion engines that participated in the 2015 AJAC EcoRun<sup>2</sup> – an impressive 5.54 L/100 km. Micra<sup>®</sup> pays off in the long run too, enjoying the lowest cost of ownership in its class<sup>3</sup>, which means Micra<sup>®</sup> is not only affordable to purchase, but easy on the wallet when it comes to maintenance, fuel, insurance, and resale value as well.

Nissan Micra<sup>®</sup> SR shown in Caspian Sea with white accessories.

<sup>1</sup>2016 Fuel Consumption Estimate. Actual mileage may vary with driving conditions – use for comparison only. <sup>2</sup>The EcoRun is an annual AJAC event to showcase eco-friendly vehicles for consumers. Vehicles are driven on real-world road conditions in order to fully test for fuel efficiency and the reduction of carbon dioxide emissions. <sup>3</sup>Based on the results from the February 2015 Vincentric Model Level Analysis of 2015 Nissan Micra<sup>®</sup> and competitor models, using manual transmission if available. Segmentation based on AIAMC industry standard.



## FROM THE ROAD TO THE TRACK.

Nissan Micra® is designed for your everyday life, with outstanding quality, agility and manoeuvrability that makes it extraordinarily fun to drive. And now these qualities are being pushed to the limit in the inaugural Nissan Micra Cup™ racing series. We take the production Micra® S MT – the same one you can drive home – add track-ready safety equipment, and put it to the test with redline-pushing excitement that can only be found on the racetrack. The best part? We invite you into the driver's seat.





## SURROUNDED BY A WHOLE NEW SENSE OF CONTROL.

Micra®'s striking, expressive design makes being in the driver's seat something to look forward to. All's clear in the cabin, where an airy design and great visibility make it easy to stay comfortable, yet also stay aware of your surroundings. The scenery inside is easy to love, too. An available silver-accented steering wheel, shift knob, and HVAC vents give your interior a modern pop. Or upgrade to a leather-wrapped steering wheel and other available features like a 6-way adjustable driver's seat and sport cloth with contrast stitching on seats and door panels to bring a refined feel to your everyday drive. The available iPod®/USB input means your playlists and podcasts can come along for the ride, while the available Bluetooth® Hands-Free Phone System lets you take calls with your hands on the wheel and your eyes on the road.

Nissan Micra® SR shown in Charcoal Cloth.



iPOD®/USB CONNECTIVITY<sup>1</sup>



BLUETOOTH®<sup>2</sup>

<sup>1</sup>Driving is serious business and requires your full attention. If you have to use the connected device while driving, exercise extreme caution at all times so full attention may be given to vehicle operation. iPod® and iPad® not included. <sup>2</sup>Availability of specific features is dependent upon the phone's Bluetooth® support. Please refer to your phone Owner's Manual for details. Bluetooth® word mark and logos are owned by Bluetooth SIG, Inc., and any use of such marks by Nissan is under licence.





## ADAPT IN A SNAP.

From end to end, Micra®'s neat and versatile storage spaces let you keep your car tidy, so storing and retrieving stuff is a piece of cake. No more sliding items or digging for your things. Stash beverages in dedicated holders up front or on your door, and even on the back of the centre console for your rear passengers. Store important items in your glove compartment or the map pockets on the doors. And when you need room for larger items, you can fold down the 60/40 split rear seats at the pull of a lever to create 819.5 L (28.9 cubic feet) of space.<sup>1</sup>

Nissan Micra® SR shown in Charcoal Cloth.

<sup>1</sup>Cargo shown for display purposes only. Cargo and load capacity limited by weight and distribution. Always secure all cargo.







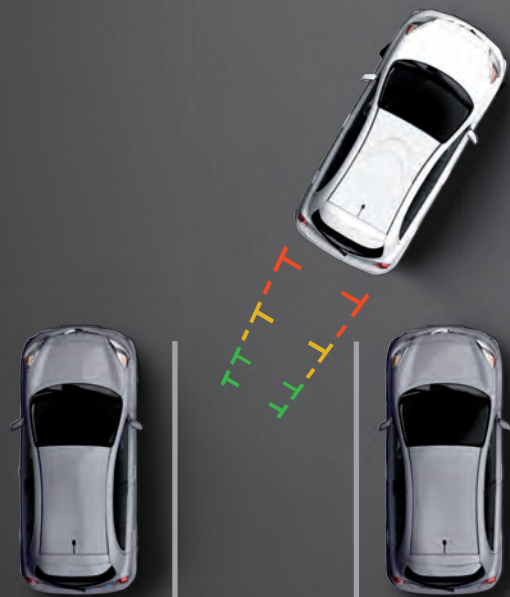
**4.65** metre  
turning radius

# SHOW OFF YOUR MOVES.

**What can you do in 4.65 metres?** It's super-easy to manoeuvre your Micra<sup>®</sup>, not only for parallel parking, but three-point turns too. At just 4.65 metres, Micra<sup>®</sup>'s tiny turning radius is smaller than its key competitors, to make sure you get through the fray and out of tight spots in no time.

**It's easy to see the perks.** It's not just front visibility that's working in your favour. Micra<sup>®</sup>'s generously sized windows and unique hatchback design open the way for great visibility ahead, behind, and all around.

**Can you get a little closer?** Micra<sup>®</sup>'s available RearView Monitor takes the guesswork out of your parking situation. When you shift into Reverse, a discreet colour camera mounted on the back of the vehicle helps you see what's directly behind you, so you know when to go farther, farther...stop!\*



Nissan Micra<sup>®</sup> SR shown in Caspian Sea.

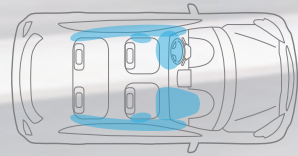
\*Parking aid/convenience feature. Cannot completely eliminate blind spots. May not detect every object and does not warn of moving objects. Always check surroundings and turn to look behind you before moving vehicle.



# NISSAN SAFETY SHIELD® PHILOSOPHY

## SURROUND YOURSELF WITH CONFIDENCE.

Wouldn't it be cool if you had the confidence you need for every part of your drive? The Nissan Safety Shield® is a comprehensive approach to safety that guides the engineering and development of every vehicle we make. The features described here are just some of many on your Nissan, helping to protect you and yours by focusing on three key areas: keeping an eye on your vehicle's systems and the surroundings, assisting in handling unexpected situations, and helping to keep you safe in the unfortunate event of an accident.



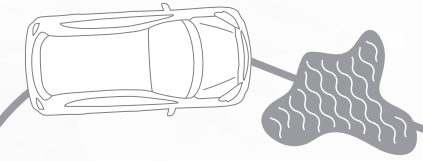
**6 Standard Airbags.** When a collision is unavoidable, Nissan's Zone Body construction helps absorb the impact while the advanced seat belt and airbag systems help protect passengers.<sup>1</sup>

**Available RearView Monitor** helps you see what's directly behind – or what you might have missed – for added peace of mind.<sup>2</sup>

**snug-kids®** Nissan safety engineers have dedicated thousands of hours to evaluating hundreds of child restraints in Nissans. The result: an industry first, The Snug Kids® Child Safety Seat Fit Guide. This guide lists child seats that fit the rear seats of Nissan vehicles, as well as offers invaluable tips on correct installation. Look for the latest Fit Guide at [Nissan.ca/en/owners](http://Nissan.ca/en/owners)

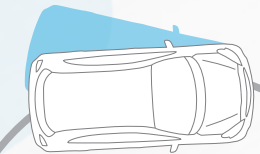
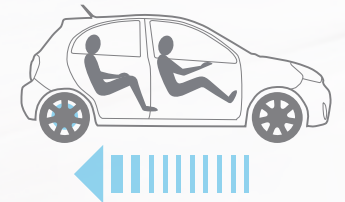


SAFETY SHIELD



**Traction Control System (TCS).** When TCS senses drive-wheel spin, it responds by reducing throttle or applying brake pressure to help maintain traction.

**Electronic Brake force Distribution/Brake Assist.** EBD is designed to send extra force to the rear brakes when there's additional weight in the back. If you need to slam on the brakes, Brake Assist detects how hard you're braking and, if it senses you are in an emergency, it will automatically help to apply maximum braking force.<sup>3</sup>



**Vehicle Dynamic Control (VDC).** Also known as stability control, VDC monitors your steering and braking to help you maintain your steered path under certain conditions by reducing engine output and/or applying brake pressure to specific wheels.<sup>4</sup>

<sup>1</sup>Airbags are only a supplemental restraint system; always wear your seat belt. Even with the occupant-classification sensor, rear-facing child restraints should not be placed in the front-passenger's seat. Also, in addition to any other requirement of applicable law, all children 12 and under should ride in the rear seat properly secured in child restraints, booster seats, or seat belts, according to their size. Airbags will only inflate in certain accidents; see your Owner's Manual for details. Inflated airbags shown for illustration purposes only, actual coverage area may differ. Airbags deflate after deployment. <sup>2</sup>Parking aid/convenience feature. Cannot completely eliminate blind spots. May not detect every object and does not warn of moving objects. Always check surroundings and turn to look behind you before moving vehicle. <sup>3</sup>Brake Assist is only an aid to assist the driver and is not a collision warning or avoidance device. It is the driver's responsibility to be in control of the vehicle at all times. <sup>4</sup>VDC, which should remain on when driving except when freeing the vehicle from mud or snow, cannot prevent accidents due to abrupt steering, carelessness, or dangerous driving techniques.



## CHOOSE YOUR TRIM LEVEL

**S**

- 1.6-litre 4-cylinder engine
- 5-speed manual transmission or 4-speed automatic transmission
- 15" x 5.5" steel wheels with wheel covers
- P185/60R15 all-season tires
- Trip computer
- Variable intermittent windshield wipers
- 60/40 Split fold-down rear seats
- Carpeted floor mats
- AM/FM/CD audio system with auxiliary audio input jack and four speakers<sup>1</sup>
- Anti-lock Braking System (ABS)
- Vehicle Dynamic Control (VDC) with Traction Control System (TCS)
- Nissan Advanced Airbag System



### Automatic transmission models add:

- Air conditioning
- Cruise control with steering wheel-mounted controls

### **SV** INCLUDES S EQUIPMENT PLUS:

- Dual body-colour power heated outside mirrors
- Body-colour door handles
- Bluetooth® Hands-Free Phone System
- Illuminated steering wheel-mounted audio controls
- Integrated Key with remote keyless entry
- Air conditioning
- Cruise control with steering wheel-mounted controls
- Power door locks with auto-locking feature
- Power windows with driver's one-touch auto-down feature
- Rear cargo cover
- Passenger's side assist grip
- 6-way manual driver's seat
- Driver's seat armrest
- Upgraded cloth seat and door trim



**SR**

### INCLUDES SV EQUIPMENT PLUS:

- 16" x 6.0" aluminum-alloy wheels
- P185/55R16 all-season tires
- Sport headlights and taillights
- Fog lights
- Chrome accents
- Side sill spoilers
- Body-colour spoiler with LED centre high-mounted stoplight
- Chrome exhaust finisher
- AM/FM/CD audio system with 109 mm (4.3") colour display
- RearView Monitor
- USB connection port for iPod® interface and other compatible devices<sup>1</sup>
- Sport cloth seat and door trim
- Leather-wrapped steering wheel
- Leather-wrapped shift knob (manual transmission models only)



Nissan Micra® SR shown in Gun Metallic.

<sup>1</sup>Driving is serious business and requires your full attention. If you have to use the connected device while driving, exercise extreme caution at all times so full attention may be given to vehicle operation. Bluetooth® word mark and logos are owned by Bluetooth SIG, Inc., and any use of such marks by Nissan is under licence. iPod® is a registered trademark of Apple, Inc. All rights reserved. iPod® not included.



# MICRA® COLOUR STUDIO

## FIVE COLOUR ACCENTS TO CHOOSE FROM.

Make your Micra® truly your own with Nissan's exclusive personalization options. A creative selection of customized exterior features in different colours to mix and match to your heart's content.

Personalize yours at [nissan.ca/micracolourstudio](http://nissan.ca/micracolourstudio).



Coloured Mirror Covers

Coloured Door Handle Finishers



Coloured Lower Door Stripes



Coloured Centre Caps



Coloured Rear Hatch Finishers



## GENUINE NISSAN ACCESSORIES.

Every Genuine Nissan Accessory is: custom-fit, custom-designed and durability-tested; available for finance and backed by Nissan's 3 year/60,000 km Accessories limited warranty when installed by dealer at time of your vehicle purchase!

- A. **Chrome Mirror Covers and Door Handle Finishers**  
Make it pop. (Sold separately).
- B. **All-Season Floor Mats**  
Bring on the weather!
- C. **Rear Bumper Protector and Trunk Sill Protectors**  
Skip the scratches. (Sold separately)
- D. **Stainless Steel Exhaust Finisher**  
Finish it off with some shine.

### Additional Accessories:

- Roof Carrier System
- Rear Roof Spoiler
- Trunk Mat
- Trunk Organizer
- Wheel Locks
- Hood Deflector
- Under Tonneau Cover Storage
- Chrome Trunk Accent
- Chrome Door Mouldings
- And More

See your Nissan dealer for details, or go to [accessories.nissan.ca](http://accessories.nissan.ca)

\*See your Nissan Dealership and read the actual limited warranty.



## PAINT AND FABRIC



S CHARCOAL CLOTH

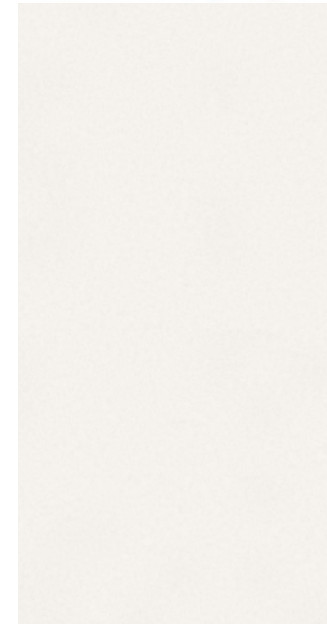
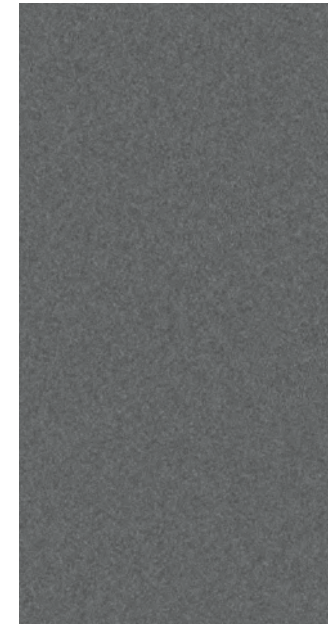
SV UPGRADED CHARCOAL CLOTH



SR SPORT CHARCOAL CLOTH

Nissan has taken care to ensure that the colour swatches presented here are the closest possible representations of actual vehicle colours. Swatches may vary slightly due to the printing process and whether viewed in daylight, fluorescent or incandescent light. Please see the actual colours at your local Nissan dealer.

■ Standard  
 †Extra cost option



Super Black KH3

Red Alert A20

Gun Metallic<sup>†</sup> KAD

Fresh Powder QM1

Metallic Blue<sup>†</sup> B17

Caspian Sea<sup>†</sup> RBK

	Super Black KH3			Red Alert A20			Gun Metallic <sup>†</sup> KAD			Fresh Powder QM1			Metallic Blue <sup>†</sup> B17			Caspian Sea <sup>†</sup> RBK		
	S	SV	SR	S	SV	SR	S	SV	SR	S	SV	SR	S	SV	SR	S	SV	SR
CHARCOAL CLOTH	■			■			■			■			■			■		
UPGRADED CHARCOAL CLOTH		■			■			■			■			■			■	
SPORT CHARCOAL CLOTH			■			■			■			■			■			■

## BUYING AND OWNING

**Nissan Advantage Program** Through Nissan Canada Finance, we offer many attractive lease and loan options that can be tailored to your individual needs under the Nissan Advantage Program. This program is ideal to first-time buyers, new Canadians and for those who have faced past credit challenges. All of our programs come with competitive rates and terms. With our flexible finance and lease options, driving home a brand new Micra<sup>®</sup> has never been easier.

**Grad Program** As you get ready to enter the work force, a new Micra<sup>®</sup> is a great choice. Even with little or no credit history, you can own a stylish new car that you love, while establishing a good credit history. You may even qualify for additional rewards for being a recent grad.

Find out more about these programs and apply online at [Nissan.ca/finance](http://Nissan.ca/finance) or talk to a Nissan Dealer about your financing options.

**No-Nonsense Warranty** Every 2016 Nissan is covered by a 3-year/60,000-km<sup>2</sup> Comprehensive New Vehicle Warranty, a 5-year/100,000-km<sup>2</sup> Powertrain Warranty, an 8-year/130,000-km<sup>2</sup> Emission Control Warranty on selected components, and a 5-year/unlimited-km Corrosion Perforation Warranty. As a Nissan owner, you'll also receive a 3-year Roadside Assistance program available to you 24 hours a day. Terms, conditions and exclusions apply. See Warranty Information Booklet for complete details.

**Added Security Plan (ASP)** For ultimate peace of mind, consider the Nissan Added Security Plan. It's our commitment to be there for you, and to help you leave your worries behind. Different plans, available for both purchased and leased vehicles, let you tailor the coverage to your driving habits.

**Security+Plus™ Prepaid Maintenance Plan** The smart choice when it comes to maintaining your new Nissan. Honoured at all participating Nissan Dealers in Canada and the U.S., your vehicle is cared for by factory-trained technicians using Genuine Nissan Parts. And best of all, there's no worrying about price increases on parts or service in the future. A variety of plans are available. Ask your Dealer for details.

<sup>2</sup>Whichever occurs first.





# SPECIFICATIONS

Engine	S	SV	SR
HR16DE – 1.6-litre DOHC 16-valve 4-cylinder engine	■	■	■
— Horsepower – 109 HP @ 6000 rpm			
— Torque – 107 lb-ft @ 4400 rpm			
Emissions – Tier 2-Bin 5 (EPA); LEV2-ULEV (CARB)	■	■	■
Dual injector system	■	■	■
Continuously Variable Valve Timing Control System (CVTCS) on intake and exhaust valves	■	■	■
Nissan Direct Ignition System	■	■	■
Platinum-tipped spark plugs	■	■	■
Electronic drive-by-wire throttle	■	■	■
Engine block heater	■	■	■

Drivetrain	S	SV	SR
Front engine/Front-Wheel Drive	■	■	■
5-speed manual transmission	■	■	■
4-speed automatic transmission	□	□	□

Brakes	S	SV	SR
Vented front disc/rear drum brakes	■	■	■
4-wheel Anti-lock Braking System (ABS)	■	■	■
Electronic Brake force Distribution (EBD)	■	■	■
Brake Assist	■	■	■

Suspension/Steering	S	SV	SR
Independent strut front suspension with stabilizer bars	■	■	■
Torsion beam rear axle with integrated stabilizer bar	■	■	■
Vehicle-speed-sensitive electric power steering	■	■	■

Wheels/Tires	S	SV	SR
15" x 5.5" steel wheels with wheel covers	■	■	■
16" x 6.0" aluminum-alloy wheels			■
P185/60R15 all-season tires	■	■	■
P185/55R16 all-season tires			■

Exterior Features	S	SV	SR
Sport headlights and taillights			■
Fog lights			■
Dual body-colour power heated outside mirrors		■	■
Body-colour door handles		■	■
Chrome accents			■
Side sill spoilers			■
Body-colour rear spoiler with LED centre high-mounted stoplight			■
Chrome exhaust finisher			■

Comfort/Convenience	S	SV	SR
RearView Monitor			■
Bluetooth® Hands-Free Phone System		■	■
Trip computer (average fuel economy, current fuel economy, distance to empty)	■	■	■
Air conditioning	AT	■	■
Heater ducts under front seats	■	■	■
Integrated Key with remote keyless entry		■	■
Power door locks with auto-locking feature		■	■

Comfort/Convenience (continued)	S	SV	SR
Power windows with driver's window one-touch auto-down		■	■
Tilt steering column	■	■	■
Cruise control with steering wheel-mounted controls	AT	■	■
Variable intermittent windshield wipers	■	■	■
Intermittent rear window wiper	■	■	■
Rear window defroster	■	■	■
Front overhead light	■	■	■
Cargo area light	■	■	■
Front door map pockets with bottle holders	■	■	■
Front cup holders in centre console	■	■	■
Rear cup holder in centre console	■	■	■
Rear cargo cover		■	■
Passenger's side assist grip		■	■
Digital clock	■	■	■
Auxiliary 12-volt DC power outlet	■	■	■
Battery saver	■	■	■

Seating/Appointments	S	SV	SR
4-way manual driver's seat	■		
6-way manual driver's seat		■	■
Driver's seat armrest		■	■
60/40 Split fold-down rear seats	■	■	■
Cloth seat trim	■		
Upgraded cloth seat and door trim		■	
Sport cloth seat and door trim			■
Leather-wrapped steering wheel			■
Leather-wrapped shift knob (MT models only)			■
Chrome inside door handles	■	■	■
Carpeted floor mats	■	■	■

Audio/Entertainment	S	SV	SR
AM/FM/CD audio system	■	■	
AM/FM/CD audio system with 109 mm (4.3") colour display			■
Four speakers	■	■	■
MP3/WMA CD playback capability	■	■	■
Auxiliary audio input jack	■	■	■
USB connection port for iPod® interface and other compatible devices			■
Radio Data System (RDS)	■	■	■
Speed-sensitive volume control	■	■	■
Illuminated steering wheel-mounted audio controls		■	■

Safety/Security	S	SV	SR
Nissan Advanced Airbag System with dual-stage supplemental front airbags with seat belt and occupant-classification sensors	■	■	■
Driver and front-passenger seat-mounted side-impact supplemental airbags	■	■	■
Roof-mounted curtain side-impact supplemental airbags for front- and rear-seat outboard occupant head protection	■	■	■
Vehicle Dynamic Control (VDC) with Traction Control System (TCS)	■	■	■
3-point ALR/ELR passenger seat belt system (ELR for driver)	■	■	■
Front seat belts with pre-tensioners and load limiters	■	■	■
Height-adjustable front head restraints	■	■	■
Rear outboard head restraints	■	■	■
LATCH System (Lower Anchors and Tethers for CHildren)	■	■	■
Zone Body construction with front and rear crumple zones	■	■	■
Hood buckling creases and safety stops	■	■	■
Energy-absorbing steering column	■	■	■
Pipe-style steel side-door guard beams	■	■	■
Immobilizer Key System	■	■	■

- Standard
- Optional
- AT Automatic Transmission Models Only

The Bluetooth® word mark and logo are owned by Bluetooth SIG, Inc., and any use of such marks by Nissan is under licence. iPod® is a registered trademark of Apple, Inc. All rights reserved. iPod® not included.

# DIMENSIONS/CAPACITIES/WEIGHTS/FUEL

Dimensions	
<b>Exterior – mm (inches)</b>	
Wheelbase	2450 (96.5)
Overall length	3827 (150.7)
Overall width	1665 (65.6)
Overall height	1527 (60.1)
Track width (front/rear)	1460 (57.5)/1465 (57.7)

Aerodynamics – Cd	
Drag coefficient	0.315

Interior (front/rear) – mm (inches)	
Head room	1033 (40.7)/976 (38.4)
Leg room	1051 (41.4)/860 (33.9)
Hip room	1217 (48.0)/1240 (48.8)
Shoulder	1295 (51.0)/1269 (50.0)

Capacities	
Seating capacity	5
Interior passenger volume – L (cu. ft.)	2472 (87.3)
Cargo volume with rear seats up – L (cu. ft.)	407.8 (14.4)
Cargo volume with rear seats folded – L (cu. ft.)	819.5 (28.94)
Fuel tank – L (imp. gal.)	41.0 (9.0)

Curb Weights – kg (lbs.)			
Base total	S	SV	SR
Manual transmission	1044 (2302)	1057 (2330)	1072 (2364)
Automatic transmission	1072 (2363)	1077 (2375)	1092 (2408)

## 2016 Fuel Consumption Estimates – L/100 km

City/Highway	
Manual transmission	8.6/6.6
Automatic transmission	8.8/6.6

— Actual mileage may vary with driving conditions – use for comparison only.

Nissan's environmental action plan focuses on several key areas. In addition to increasing production of Zero Emission vehicles like the 100% electric LEAF®, we're improving fuel efficiency across our lineup, and reducing the environmental impact of manufacturing through energy-efficient practices in our plants.



**NISSAN  
GREEN PROGRAM**