

Hawaii Marine

Reservists forsake the cold to train in sunny Paradise

by SSgt. Carla Goffard, USMCR

Marine reservists from Wing Engineer Squadron-47 and Detachment F, 4th Service Support Group, from Green Bay, Wis., arrived here Feb. 16.

The unit left snow and zero-degree temperatures behind for two weeks of annual training in paradise.

While here, the reservists worked with Facilities Maintenance, and some of their projects included the demolition of old supply sheds and pouring concrete slabs for new structures; building golf course safety screens; and constructing a sea wall at the Station Marina.

Eight officers and 125 enlisted personnel trained in their Military Occupational Specialties in administration, supply training and operations and motor transport, while supporting the engineers and mechanics.

While most Station personnel were enjoying liberty on President's Day, approximately 12 combat engineers and heavy equipment operators demolished three supply sheds in the 3d Marines' area. Motor transport Marines helped by

hauling the debris away, and cement slabs for two buildings were then poured. The structures will be erected by a Navy Construction Battalion, also training here.

The project on the Station Golf Course involved two safety screens built near the 16th tee by approximately 10 heavy equipment operators. The screens are to protect golfers on the 15th green from stray balls, and will guide them toward the 16th hole.

"It's good training for them



LCpl. Richard Koenig, a reservist with WES-40, welds poles together for the golf course safety screens.

and good training for us," said SSgt. Harry Collins, from Facilities Maintenance Dept. "It's Self-Help Section. We get experience in coordinating equipment and material for the different jobs the reservists do. We're working as a team — gaining valuable exposure to different job situations that could prove helpful in the future."

A 23-foot perimeter sea wall is under construction at the Marina and approximately 25 Marines from the combat engineer and heavy equipment sections are working 12-hour days to complete the project.

"This is a technically challenging job," said Capt. Thomas Miller, officer in charge of the project. "It is providing us with hard skilled MOS training. Because of the management and organization by MSgt. Paul Ferrecki, NCOIC combat engineers, the men are kept busy, a must to have the job accomplished within the two-week period," continued Miller. The project is progressing on schedule, but without Capt. Kevin McCabe's assistance and previous planning, none of this could be accomplished,

according to Miller.

Air hammers were used to break the original collapsed concrete. Dredging the coral from around the edge of the wall was made easy with the use of a 30,000-ton crane coupled with an antiquated clam bucket — a design which was originally used back in the 1940's.

"It's a good thing that Sgt. Glenn Jorgenson, a heavy equipment operator, and myself were around and recognized the equipment," commented Cpl. Carl Carlson, the crane operator. The bucket was adapted to a modern crane to accomplish the mission. Carlson added, "No dredging equipment was available here, so we made do with what we had."

Several reinforcement cribs were built with 19, 20-foot steel rods used in each crib, constructed to brace the entire length of the wall. The Marines waded into the water around the wall to dig out loose debris, and the cribs were lowered into place and the level checked.

Reinforced forms were also constructed by the reservists which were placed on the bay side of the cribs to prevent the concrete from leaking out.

Cont. on A-9



Commandant of the Marine Corps, Gen. Paul X. Kelley, talks about the 'state of the Corps.' See story on A-3.

'Stuff-Ex' performed

by Sgt. Nolan Wells

MCAS Cherry Point, N.C. — When the word came down for the Marines of HMM-266 to "take their helicopters and stuff them," that's exactly what they did.

They stuffed them down the throat, and into the belly of, an Air Force C-5 Galaxy.

The exercise, conducted last month, appropriately titled "Stuff-Ex," involved the disassembly of three of the squadron's CH-46 Sea Knights, loading and unloading them from C-5s, and reassembling them.

It was done in preparation for the deployment of 12 Sea Knights to Norway for 4th MAB's Cold Winter exercise 1-85 this month. Three CH-46s will fit aboard a C-5. "This deployment will mark the first time an

exercise of this magnitude is conducted on the East Coast," said SSgt. Keith Jones, HMM-266 flightline division's assistant NCOIC. According to Jones, about 3,000 of an aircraft's 15,000 pounds must be stripped off the helicopter before it can be loaded into the Galaxy. The rotor blades and cowling are removed and stored inside the helo. The forward rotor head and transmission, as well as the aft rotor and vertical shaft, must be removed and placed on transport stands.

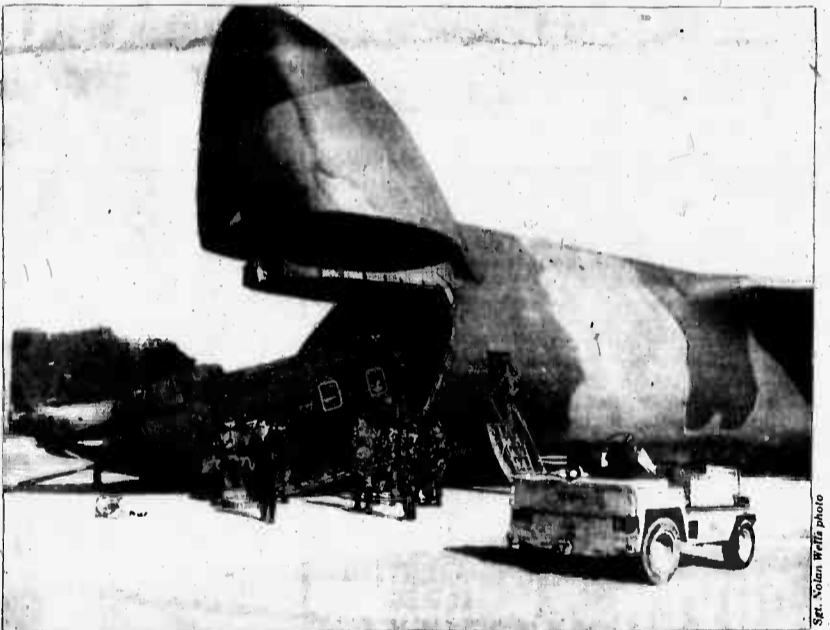
"We also have to remove the rear struts and replace them with 'dummy struts' so the aircraft sits low enough to go into the C-5," Jones added. "It takes about six hours to get the helicopter stripped down and ready for loading." Once the squadron gets to the deployment area, the

helicopters are unloaded and can be assembled and mission ready in 8 to 10 hours.

"This exercise is part of the Maritime Prepositioning of Ships," said GySgt. Roger Gunther, 6th MAB.

"They would get a notice to deploy the same time we would and start steaming to the operational area," Gunther added. "When we get the notice here, we would breakdown the helicopters, load them and fly to an airfield in the operational area. Using C-5s to deploy helicopters could save a week, maybe more," he said, "depending on where we are going."

It may have only been training for the Marines, but when the word is passed for them to take their helicopters and stuff them, the training will make the job an easy task to swallow.



HMM-266 Marines and Air Force loadmasters put a CH-46 Sea Knight into the belly of a C-5 Galaxy.

MAG-24 celebrates 43 years of aviation

The air support element of the 1st Marine Brigade, Marine Aircraft Group-24, will be 43 years old tomorrow; and even though the MAG has only been part of the Brigade since 1968, its history goes back to the hectic months following the attack on Pearl Harbor.

Formed March 1, 1942, at MCAS Ewa, the MAG initially joined Marine Fighter Squadrons-211 and -212, but Marine Scout Bombing Squadrons-242, -243 and -244 quickly followed, causing the early detachment of VMF-211.

In March 1942, the forward echelon of the Group arrived at Efate, New Hebrides, to establish an airstrip at Vila. On June 15, 1942, the Group returned to Santa Ana, Calif.

Composed of five scout bombing squadrons, the MAG immediately began an intensive training program to prepare for further combat duty. In January 1943, the MAG boarded ship to return to Ewa. Upon arriving in the Pacific theatre, elements of the MAG served at Midway, Johnston and Palmyra islands while the headquarters remained at Ewa.

In September, the group returned to Efate to control local air defense. From November to mid-December, the group moved to Banika in the Russell Islands, then to Bougainville. The service echelon began work on the New Piva airstrip and had it operable by early January 1944.

With Japanese attacks on

the airstrip increasing, the MAG split into two air base defense battalions to protect it. By late October, the New Zealanders had taken over defense of the Solomons, and Marine units began preparing for duty in the Philippines.

In mid-December, the group moved to Milne Bay, New Guinea, for staging. In January 1945, the forward echelon of the group went ashore under enemy fire to start construction of Mangaldan Field. Within two weeks, the field was operable and the first aircraft arrived.

MAGs-24 and -36 combined to serve from the Mangaldan area during the Luzon Campaign as part of the Fifth Air Force. In April, the group joined MAGs-32 and -12 to

form Marine Aircraft Group Zamboanga. This group supported missions in Mindanao and Sulu Archipelago and won much praise from the ground forces they supported.

The fighting stopped in August 1945, and one of the last MAG missions was the dropping of the Japanese surrender leaflets to enemy units in the area.

With the war over, the group moved to Guam in 1947 and two years later to MCAS Cherry Point, which became MAG-24's home for 20 years. During the Korean war, the group trained large numbers of pilots and crewmen for combat duty.

During the Cuban Missile Crisis in 1962, the MAG served as a back-up force to MAG-14, which was deployed

to Florida that fall. Although the headquarters element remained at Cherry Point, the various fighter squadrons were on the alert for any action necessary to remove the Soviet-Cuban threat to our mainland. The MAG returned to its training at the end of the crisis.

Its squadrons were now becoming fighter, and fighter attack squadrons, tasked with destroying enemy aircraft, missiles and surface targets.

In 1966, the MAG received instructions in operating short airfield tactical operations. They were then tasked with operating such a facility at the auxiliary landing field in Bogue, N.C. By 1967, the group added two training squadrons to

perform the training duties previously performed by the tactical squadrons.

In April 1968, after 20 years at Cherry Point, the group moved here and remains today as the air arm of the 1st Marine Brigade, providing essential support to Marine ground units and completing our unique air/ground team.

Honors adorning the MAG's colors include the Navy Unit Commendation Streamer, with Bronze Star; Asiatic-Pacific Campaign Streamer, with three Bronze Stars; World War II Victory Streamer; China Service Streamer; National Defense Service Streamer, with one Bronze Star; and the Philippines Liberation Streamer, with one Bronze Star.

What's inside

Hot meals served	A-4
Australian crafts	A-5
MAU update	A-10
Pacific rifle matches	B-1
Vandalism . . .	B-3
Firing ranges	B-7

Weekly items

Education	A-7
At a glance	A-8
Salutes	A-11
Sports Shorts	B-2
New bus schedule	
What's cooking . . .	B-4
Special Services	
Religious services	
Movie schedule	B-5
Island Happenings	B-6

Hawaii Marine

The Hawaii Marine is an unofficial newspaper published every Thursday by RFD Publications, Inc., 46-016 Alaloa St., Kaneohe, Hawaii 96744, in the interest of the U.S. Marine Corps personnel in Hawaii. All advertising is arranged by the publisher, RFD Publications, Inc., telephone 235-5881. Circulation is 8,000.

All news content is prepared by the Joint Public Affairs Office, Marine Corps Air Station, Kaneohe Bay, Hawaii 96863, telephone 257-2179. Articles for publication must be submitted no later than noon Thursday for the following week's publication. The Hawaii Marine solicits articles and photographs from all Marine Corps organizations; however, it reserves the right to edit or rewrite material submitted.

Everything advertised in this publication must be made available for purchase, use or patronage without regard to race, creed, color, national origin, age or sex of the purchaser, user or patron. A confirmed violation or rejection of this policy of equal opportunities by an advertiser will result in the refusal to print advertising from that source.

Sun Press carriers delivering the Hawaii Marine may request a voluntary monthly contribution of \$1 from residents of government housing at the Air Station; however, the contribution is strictly voluntary and residents will receive the Hawaii Marine whether they voluntarily contribute or not.



Shed some light on your photographic secrets. Nikon FE, 28mm lens f8, 30th of a second, Kodak Tri-X film.

Photos wanted

If your hobby is photography, and you would like to have your work published, here's your chance.

The Hawaii Marine would like to start a "Photo of the Week" column, using photographs taken by our readers and selected by a panel headed by the Public Affairs Officer.

Submissions can be 8X10 or 5X7; black and white preferred, but color will be accepted if it has good contrast, and should include the photographer's name, rank, unit, telephone number,

type of film used, exposure settings and lens used. Photographs can be of any subject, military or nonmilitary, and must be in good taste.

To submit entries, stop by the Joint Public Affairs Office, Building 244, next to the Station Theater, Monday through Friday between 8 a.m. and 4:30 p.m. Photographs will be returned if requested.

For more information call MGYSgt. G.E. Hajar, Public Affairs Chief, at 257-3319/2178.

Toll-free information

Washington (MCNews) — Marines and their families who do not have immediate access to a local Family Services Center may call a special 24-hour toll-free information line.

Calls will be answered east of the Mississippi River by the Family Services Center at MCEC Quantico, Va. Western calls will be handled by the center at MCB Camp Pendleton, Calif.

While anyone may use the toll-free service, its principal design is to help families who are in transit, on leave, or

those assigned to activities not having a family services center. Trained counselors are prepared to provide advice on spouse rights while their husbands are on deployment, information on child abuse, spouse employment, and personal counseling.

The toll free numbers for Family Services Information are: east of the Mississippi, (800) 336-4663; west of the Mississippi, (800) 854-2131.

Calls will be answered 24 hours a day by trained family assistance counselors.

Cope Thunder tests '232

MCAS Iwakuni, Japan — A peaceful Philippine sky became a roaring aerial battlefield recently as VMFA-232 joined U.S. Navy and Air Force aircraft in Exercise Cope Thunder.

The squadron's F-4 Phantoms joined a multi-service force of A-4s, A-7s, F-14s, and F-5s to "defend" NAS Cebu Point from attacking Air Force F-4s.

Before '232's "Red Devils" could get at the attacking F-4s, they had to penetrate a screen of 32 F-15s. As they did so, ground-based Marines fired surface-to-air missiles at

the attackers. Although the missiles were decoys, they added intense combat realism to the exercise. "The training gained through simulated combat is invaluable to everyone," said Capt. Jay Kuenzle, a pilot with '232. "Each aircrewman takes detailed notes," he continued. "Once on the deck, he compares his notes with those of his squadron mates and their overall effect on the enemy attack can be determined."

VMFA-232 is currently deployed to MCAS Iwakuni.

Essay contest

Essay entries are now being accepted from students in grades 7 through 12 for the 1985 Fleet Reserve Association's Americanism Essay Contest with the theme "America's Role in the Family of Nations."

A prize of a \$1,000 Savings Bond will be awarded to the overall winner and several hundred dollars in Savings Bonds will be awarded to the winners and runner-ups in each grade. The essay must be on the theme, and only one entry per student will be permitted. The essay should be approximately 300 words in length, and written, printed or typed on one side of

the paper with black ink. Entrant's name should not be on the essay itself. Each entry must be accompanied by a separate sheet of paper with the student's and school's name, grade, address with city, state and zip code; social security number, indicate if students or parents; telephone number, indicate if none or unlisted. Entries must be postmarked no later than midnight March 15, and should be mailed to: Americanism Committee, P.O. Box 6067, Honolulu, HI 96818.

For more information call the association's branch office at 422-2121.



OOOPSS!

In last week's Hawaii Marine, this picture was printed identifying the boy erroneously. The Cub Scout hauling the mangrove tree is Richard Simms, Cub Scout Pack 225, Den 5, not Dennis Sutliff . . . Sorry!!!

HOOVER TRADE-IN SALE

GUARANTEED LOWEST PRICES IN HAWAII
INCLUDING ALL MILITARY EXCHANGES

REG. \$417 YOUR CHOICE **\$198**
SALE ENDS 3/3/85

CONCEPT TWO
2-Speed Cleaning System With Plug-In Help-Mats™

Power for Above Floor Cleaning

- Quadraflex™ agitator
- Brushed edge cleaning
- 15% qt. disposable bag
- Twin lamp flashlight
- Automatically adapts to most carpet
- Power Drive

TWO-MOTOR Celebrity™ 'QS
3.7 HP

- 14 qt. bag
- Power nozzle
- Cord rewind
- Two speeds 85199

QUIET SERIES

PACIFIC SURPLUS & DISTRIBUTORS
262-8131
KAILUA

Grand Opening Monday
Mar. 4 8:30 am - 7 pm

20-50% OFF
NO RAINCHECKS

FREE (on purchase of \$20 or more)
Still Flowers Selected 20% OFF
State Papers 50-100 yds. 20% OFF
Jacks 20% OFF

for up to 70% OFF

621-9112

Florat & Craft Supplies
Dried & Artificial Flowers
Classes & Mylar Balloons

The Rainbow Tree

IRA's . . . CONSIDER THIS

A Perspective On Personal Financial Planning.

In Government Guaranteed Mortgages We Trust.

John Hancock U.S. Government Guaranteed Mortgages Trust offers you a new investment opportunity. Now you can invest in a portfolio of "Ginnie Mae" certificates (Government National Mortgage Association). The Trust is designed for a high level of return, safety of principal and liquidity by investing in a portfolio of securities guaranteed by the U.S. Government.

A minimum initial investment of \$1000 makes this attractive for both large and small investors, and you can add to your account in amounts of \$25 or more at any time.

For more information and a Prospectus, fill in the coupon below.

Please send me more complete information including a Prospectus on John Hancock U.S. Government Guaranteed Mortgages Trust. I will read the materials carefully before investing or forwarding funds.

Len Katsarsky
John Hancock Companies
1144 10th Ave. Suite 101
Honolulu, HI 96816
(808) 734-2255

Name _____
Address _____
City _____ State _____ Zip _____

John Hancock
U.S. Government
Guaranteed Mortgages Trust

Commandant delivers posture statement

by Mannell P. Brice, HQMC Div PA.
Washington, D.C. (MC-News) — From low intensity conflict, including counter-terroring state-sponsored terrorism, to high intensity, large scale, global commitments, the Marine Corps is "well trained, equipped, and supplied for the most demanding assignments."

With this evaluation, Gen. Paul X. Kelley opened his annual Posture Statement, Feb. 6, a formal assessment of the "State of the Corps," before the Senate Armed Services Committee.

In his first appearance this year before the various Congressional committees considering the FY-86 Defense Budget, the Commandant detailed major ongoing programs of vital importance to the Marine Corps and to this nation's defense capabilities.

According to the Commandant, Marine readiness has never been better. He asked for Congress' continuing support in maintaining this readiness and the Corps' "unique capability to respond to national security needs across the entire spectrum of conflict."

In a rare departure from the more conventional topics usually addressed in the Posture Statement, the Commandant discussed the Marine Corps response to the growing threat posed by state-sponsored terrorism.

The Marine Corps, he stated, is committed to defeating terrorism, rather than coping with it or "weathering it out" as a passing storm. He concluded, "We intend to prove to enemies that terrorism is too costly a tactic to adopt against Marines."

Gen. Kelley requested an end strength of 199,500 Marines for FY-86 — a

modest increase of 1,200 over the FY-85 figure. The increase will be used primarily to fill personnel slots in various weapons and equipment modernization programs.

The balance of the statement was devoted to the Marine Corps role in national defense, coupled with the major "hardware-related" programs essential to the readiness and capability of the active forces and the reserve component; and the "people-related" programs and issues affecting Marines and their families.

Sealift Power projection

Of particular interest to the Marine Corps, Gen. Kelley stated, is the Balanced Ship Building Program launched by the Navy to meet the defense objective of "sufficient ships to simultaneously lift the assault echelons of a MAF and a MAB." He referred to the LHD-1 (Wasp) class, multipurpose, amphibious assault ship as the "linchpin" of the program.

Already adding to America's amphibious capability are the lead ships of the LSD-41 class now entering the fleet. In addition, a Service Life Extension Program will add 15 years of service life to the very capable LPD-4 class of 11 ships.

These programs, together with the delivery of the Landing Craft Air Cushion,

(LCAC) enhance the "over-the-horizon" launch of amphibious forces. The first LCAC has already been delivered to the Navy. Initial operating capability of the first six-craft detachment, to be homeported at Camp Pendleton, is scheduled for 1986.

The Commandant also expressed strong support for a "competitive, healthy Merchant Marine Fleet" and the sealift and power projection capabilities provided by an Expanded Merchant Marine Fleet.

Enhanced crisis-response

The Maritime Prepositioning Ships (MPS) concept, "the most important and innovative of our crisis-response enhancements is now a reality," the Commandant stated. Under the MPS program, Marines would be airlifted to a crisis area to marry-up with their equipment and supplies to carry out a variety of missions.

"I am a firm believer that an ounce of prevention is worth a pound of cure," Gen. Kelley said, "and that when you have the ability to quickly move a 16,500-man Marine brigade to a crisis area, you have a ready-made prescription to prevent that crisis from escalating."

"MPS," he continued, "is just such a prescription. It provides a force of combined

arms with 30 days of essential supplies, available on call." The first of three MPS brigades is now operational, and a second and third will become operational in FY-85 and FY-86, respectively. The Marine Corps will begin exercising its MPS forces for the first time this year.

The Norway Prepositioning Program is another Marine Corps initiative showing excellent progress, the Commandant reported.

The program is well under way with solid host country support, and it consists of the prepositioning of selected equipment and supplies in Norway together with the formation of a MAB-sized, totally integrated air-ground team under a single commander — all, without posting a single U.S. Marine on Norwegian soil.

Tactical mobility

The Commandant also

cited improvements in surface lift provided by the LCAC; a Service Life Extension Program for the LVT(A)-7 amphibious assault vehicle; and development of a follow-on vehicle to replace the LVT(A)-7 family in the late 1990s.

Another major initiative is the development of the new tilt-rotor MV-22A "Osprey" aircraft, formerly known as the AVX. It will enter the Marine aviation inventory in 1990s.

Cont. on A-6

SOFT CONTACT LENSES

Extended Wear and Tinted Soft

From **\$129**
Daily Wear **\$79**

Includes: Lenses, Care Kit, Follow-up Care, and 90 Day TRIAL PERIOD. (Effective 'Til March 1, 1985)

FAMILY EYE EXAMINATION PLAN

\$39

PRESCRIPTION GLASSES

From **\$49**

COMPLETE PROFESSIONAL VISION SERVICES
DEDICATED TO QUALITY AND SERVICE IN VISION CARE

Dr. Charles Dean
Optometrist

KAILUA
139 Hekili St.
261-9735



DR. F. BROCK HOPKINS
(formerly of Enchanted Lake Animal Clinic)
ANNOUNCES
His relocation to:
AIKAIHI PARK ANIMAL CLINIC
AIKAIHI PARK SHOPPING CENTER
(Behind Firestone, Kailua)
HOURS:
MON., TUES., THUR., FRI.
8:00 AM-5:30 PM
WED., SAT.
8:00 AM-NOON
Dr. Hours by Appt.
254-1548

10% Discount To All Repeat Customers
5 DAYS ONLY
THE BEEF CENTER
(Serving Hawaii for 3 years IS NOT, AND HAS NOT BEEN AFFILIATED WITH ANY OTHER MEAT CO. IN HAWAII. MAHALO)
6-MONTHS SAME AS CASH NO MONEY DOWN—45 DAYS BEFORE FIRST PAYMENT
6-12 or 18 MO. FINANCING AVAILABLE
BEEF CENTER PREFERRED CUSTOMER CREDIT ACCOUNT

A.B.C. SALE!

5% DISCOUNT TO THE 1st 50 CUSTOMERS & ALL MILITARY

BUY BEEF BY THE SECTION ON CHART BELOW AND **SAVE**

U.S.D.A. CHOICE SPECIAL #A. EXAMPLE:
250 LBS. FOR \$43⁰⁰ ONLY Per Payment For 6 Payments
INCLUDES USDA CHOICE:
• Sirloin Steaks • Prime Beef • Soup Bones
• Porterhouse Steaks • Rib Eye Steaks • English Cut
• Bone Steaks • Sirloin Tip Steaks • Roast
• Club Steaks • Stewing Rib Roast • Bar-B-Q Ribs
• Rib Steaks • Ground Beef
GET 50 LBS. BONUS FREE
• 30 lbs. Grade A Fryers No Charge
• 10 lbs. Pork Chops With Special #A
• 10 lbs. Hot Dogs
Example: 200 lbs. Loin Rib plates & flank at \$1.29 lb. equals \$258 plus free 50 lb. Bonus Chuck! Avg. wts. 200 to 350 lbs. includes sections 1C 1B 3F 3G

6 MONTHS SAME AS CASH NO PAYMENT TILL APRIL 20TH 833-0020
BEFORE BUYING YOUR BEEF FROM ANY OTHER CO. CHECK US OUT

SPECIAL # B. EXAMPLE 380 LBS. MEAT PLUS NEW FREEZER
As Low As \$29.07 Per Week For 24 Weeks OR **116³⁰** Per Mo. For 6 Months
EXAMPLE: 300 lbs. USDA CHOICE BEEF at \$1.09 lb. \$327⁰⁰
New 10 Cubic Foot Westinghouse Freezer \$370⁰⁰
Total \$697⁰⁰
8 Months same as cash or take up to 18 months to pay. Beef orders include sections on chart A, B, C, D, E, F & G.
PLUS THIS 80 LB. BONUS PACK
• 10 lb. Promo Ham • 30 lbs. Grade A Fryers • 10 lbs. Cold Cut
• 10 lbs. Pork Chops • 10 lbs. Pork Roast • 10 lbs. Green Beans
FREE FREEZER DELIVERY
300 to 450 lbs. Beef avg. wts.

WE APPRECIATE YOUR BUSINESS MAHALO!
ALL ORDERS CUT AND WRAPPED FREE FOR YOUR FREEZER
Member of the Better Business Bureau, Chamber of Commerce and Small Business Association.
IF LINES ARE BUSY KEEP TRYING 833-0020

SPECIAL D. 250 LB. MEAT PLUS NEW FREEZER 99⁵⁰ Per Mo. For 6 Months
Example: 200 lbs. USDA CHOICE BEEF at 1.29 lb. 258⁰⁰
8 Cubic Foot New Westinghouse Freezer 339⁰⁰
Total 597⁰⁰
PLUS THIS 50 LB. BONUS
30 lbs. Grade A Fryers
10 lbs. Hot Dogs 10 lb. Pork Chops Sec. 1-C & B 3 F & 3 G
Avg. Wts 200-350 lbs.

BUY NOW. CATTLE MEN ACROSS THE COUNTRY SAY BEEF PRICES ARE BOTTOMING OUT AND GOING UP.
GUARANTEED TENDER U.S.D.A. CHOICE SPECIAL #C
200 LBS AS LOW AS \$26⁴⁰ PER MO. FOR 6 MONTHS
GET THIS 40 LB. BONUS FREE!
BEEF EXAMPLE: 160 lbs. USDA CHOICE BEEF ORDER at 99c lb. Plus FREE 40 lbs. Bonus absolutely no charge. Avg. wts. 150-300 lbs. Sec. 1-D, C, 1-F & 3-G
BONUS EXAMPLE

USDA CHOICE BEEF CHART
A B C D
E F G
FOOD STAMPS WELCOME ON BEEF ORDERS

FREE! 50 4 OZ. RIB EYE STEAKS
TO THE FIRST 50 CUSTOMERS PLACING ORDERS PURCHASE REQUIRED

FREE 30 FILLET STEAKS 4 OZ.
TO THE FIRST 30 CUSTOMERS CALLING TO PURCHASE REQUIRED PLACE ORDERS

PRIMAL CUTS SPECIALIZING IN PACKER TRIM STEAK & ROAST ORDERS 2.59-5.69 LB. CUT FROM THIM RIBS. LOINS ROUNDS & CHUCK 50 lb. & Up

ALL BEEF USDA CHOICE GUARANTEED 100% TRIPLE GUARANTEE
1. If you're not completely satisfied within 10 days of date of purchase, full order will be replaced.
2. After 10 days, order will be replaced pound for pound, package for package, no time limit.
3. 18 month guarantee against freezer burn or order replaced LB. for LB. PACKAGE FOR PACKAGE.

THE BEEF CENTER

SPECIAL! Fiesta Chicken
A split Broiler Chicken is baked to a golden brown, then covered with Enchilada Sauce and Cheddar Cheese. Served with Spanish Rice, Mexican Corn, Refried Beans, Cornbread & Butter plus Soup or Salad...Ole!
6.95
yum yum tree
WARD CENTRE • 523-9333
KAHALA MALL • 737-7938
PALI PALMS PLAZA 254-5861
Served from 11:00AM Ample Free Parking

NATIONWIDE COMPANY! WESTINGHOUSE FREEZER & CHARMGLOW GAS GRILLS AT DISCOUNT PRICES WITH ANY BEEF ORDER
OVER 20 YEARS EXPERIENCE
HOURS: MON.-FRI. 10 a.m. to 8 p.m. SAT. 10 a.m. to 6 p.m. SUN.-CLOSED
CALL 833-0020 3131 N. Nimitz Hwy.

Hot meals

Good food lifts morale

by Cpl. Pat Lewandowski

Pohakuloa Training Area, Hawaii — Their motto "We feed them all," was the task undertaken by Marines who worked 12 to 16 hours a day cooking meals for 1st Marine Brigade members training here.

During the past several weeks, 1/3, 1/12 and numerous support units dotted this desolate training facility, nestled between two dormant volcanoes. Whether in the base camp or the lava fields, Marines are fed, a responsibility not taken lightly by the cooks who provided two hot meals a day for all personnel assigned to PTA.

A converted Quonset hut serves as the dining facility at PTA where approximately 1,200 Marines eat their meals, except lunch, which are ready-to-eat meals. With enough room for only 200 people, each unit is assigned a time when they can eat. In addition to the dining area, administrative, storage and kitchen activities also crowd the limited space.

"Since Jan. 4, the cooks here have been preparing two meals a day for more than 1,200 Marines," said GySgt. Lawrence Powell, noncommissioned officer-in-charge. "This small building has become the Regimental dining facility for the duration of exercises. We are tasked with feeding all the units involved."

"Because of limited space for cooking and serving, I extended the meal hours to accommodate everyone," continued Powell. "Almost 75 percent of each meal is sent to units in the field by using vacuum cans, making timing very important." Everything must be prepared before it can be canned and delivered to the unit, according to Powell, and they get everything served there, right down to the same utensils.

"The only problem here," Powell said, "is that I have to retrain a new crew of cooks every two weeks because they return to Kaneohe Bay."

Working in the small facility with one watch of cooks has posed several problems for the Marines

who create culinary delights. One watch is on duty from 4 a.m. until approximately 7:30 p.m., when the evening meal is over. Several cooks and a baker work throughout the night and early morning to prepare food and make the day's bread and pastry. With a shortage of grill space inside the building, cooks have moved the breakfast cooking outside, using field gear to make pancakes and coffee as early as 5 a.m., no matter what the weather.

According to Sgt. Thomas Allen, subsistence clerk for 1/3, the operation at PTA posed other problems as well. "When we arrived here, the Army didn't have a price list for any of the food we needed, and our ordering and portion methods were completely different. When in garrison, we order food by pound weight, they sell it in bags or units. It took some time to alleviate the problem."

The problems encountered by Powell and his cooks were challenges to their experience and resourcefulness. Combining the existing facility with field cooking equipment solved the apparent space problem, and served to refresh the training of Marines who have not used the gear recently.

That training also involved the use of vacuum cans for extended periods of time, something not normally done in garrison.

"Our work load out here is almost the same as back at Kaneohe Bay, except for the way we serve the meals," explained Sgt. Michael Custis, chief cook. "Timing is very important since we have to prepare food to be transported to the field. We can't have the eggs done at 5 a.m. without the meat, and vice versa. We try to be flexible out here and I think we've proven we can adapt to any problem which may occur. It's been a great experience for all of us, veterans as well as novices."

The 17 cooks who work in the PTA facility were not alone during their stay. Daily, 26 mess men from each of the units eating in the mess hall, worked in the galley, pot shack and mess deck. They prepared juices, salads and other food to help the cooks feed more than 1,200 Marines at each meal.

The teamwork, flexibility and endurance of the Marines who worked in the dining facility allowed them to fulfill their motto. They returned to the Air Station Feb. 10 with the satisfaction of knowing that they really did feed them all.



Cooks at the PTA dining facility really did "feed them all" as demonstrated by this unique bird feeder.



LCpl. Dave Behiel, H&S Co., 1/3, serves dessert to LCpl. David Theisen, Co. A, 1/3 during an evening meal. Cooks from units throughout the 1st Marine Brigade banded together to provide hot meals for more than 1,200 Marines a day.



Cpl. Robert Rains, a cook with 1/3, tosses a salad before an evening meal. Rains and 16 other cooks worked 12 to 16 hours a day to provide units at PTA with two hot meals a day. Various 1st Marine Brigade units spent up to a month deployed there.



PFC Ernest Jefferson, Headquarters Battery, 1/12, adds sugar to a juice mix before its distribution in the field. The cooks and bakers at the PTA dining facility helped boost the morale of Marines on the Big Island.



LCpl. Ronald Dawkins, Headquarters Battery, 1/12, scrubs a meat pan. Dawkins was assigned to mess duty at the Pohakuloa Training Area dining facility to help cooks, bakers and other messmen in feeding the 1,200 Marines training on the Big Island.

Australian crafts exhibited

Australia's best potters and the Australian Ambassador to the United States is presenting an exhibition featuring ceramics and photographs at Amfac Plaza Exhibition Room, in downtown Honolulu, through March 18.

Sponsored by the Australian government as a contribution to worldwide cultural exchange, "Contemporary Australian Ceramics" will present the stimulating work of 38 leading ceramic artists. "Footsteps II," a photographic record taken by Ambassador Sir Robert Cotton, will show his wide-ranging travels in recent years.

"We welcome this opportunity to show a spectrum of artistic talent," William Fisher, Australian consul-general in Honolulu, commented. "We are especially pleased to show what has been happening in Australian ceramic arts since our last exhibition was held here in 1976. 'Contemporary Australian Ceramics' is an exciting exhibition and is evidence of the dramatic development in Australian crafts.

"While this is not a survey exhibition, it amply illustrates the breath and vigor of ceramic artists currently working in Australia," Fisher explained. "The last 10 years have seen the emergence of a strong professional core of potters who have responded to their environment in a personal way."

Both domestic and non-functional work is included in the ceramics exhibition. The materials used range from delicately formed and translucent porcelain, to large and robust slab and handbuilt stoneware and earthenware. The largest part of the exhibition is of wheel-thrown pieces.

"Contemporary Australian Ceramics" comes to Hawaii after a tour of North American cities, including showings in Washington, D.C., New York City, Boston, Montreal, Toronto and Mexico City. Following its showing here, the exhibition will tour Asian capitals, including Hong Kong, Seoul, Manila and Jakarta.

"Footsteps II" records in black and white photographs some of Ambassador Sir Robert Cotton's favorite scenes around the world. It has been shown in Washington D.C. and in New York City.

Sir Robert's excursion begins in Honolulu, a frequent stopover point since his appointment as Australian ambassador in 1982, it then winds back through other countries including Australia before returning to the United States.

"Footsteps II" has a variety of scenery in the 100+ photograph display. His pictures of Connecticut include bare trees, calm ponds and stone walls lined with light; a quiet island in the middle of Paris; a snowy street in Switzerland; a barren beach in Malaysia;

the Australian surf in the morning; and the view from a hotel lanai in Honolulu.

The Australian Consulate-General is inviting schools and community organizations interested in arranging group visits to "Contemporary Australian Ceramics" and "Footsteps II." They should contact the Consulate-General at 1000 Bishop St.,

Honolulu, HI 96813, or call 524-5050. Lectures and film showings on Australian arts and crafts can be arranged for such groups.

Amfac Plaza Exhibition Room is located in the Amfac Center, Fort Street Mall, in downtown Honolulu. Exhibition hours are 8:30 a.m. to 5 p.m., Monday through Friday. Admission is free.



Sgt. Christopher Wood photo

Valentines

Col. G.R. Christmas, commanding officer, 3d Marines, accepts valentines from a student at St. Anthony's School. Hundreds of valentines were presented to the colonel Feb. 12 to be forwarded to Marines of the 31st Marine Amphibious Unit currently deployed in the Western Pacific. During the ceremony, the FMFPac Band, delighted the youngsters with light-hearted musical antics. Christmas (inset) thanks the students for their cards.

New treatments tested for VD

Washington (NES) — A Navy medical research team at the naval hospital in San Diego has tested two medicines on penicillin-resistant strains of gonorrhea.

After testing 92 servicemen infected with gonorrhea, the team reported successful treatment of resistant strains with the medicines norfloxacin and spectinomycin.

The test subjects — about half of whom had the

resistant strains — were divided into two groups. The first group took two doses of norfloxacin orally, and the second received spectinomycin injections. Both medicines were 100-percent effective in curing the disease, and no adverse reactions were reported.

Gonorrhea is a sexually transmitted disease that infects three million people in the United States each year and about 250 million worldwide. For more than

three decades, penicillin has been the preferred drug for treatment of the disease. However, penicillin-resistant strains of gonorrhea have surfaced in the United States in recent years, prompting the search for alternative treatments.

Results of the Navy team's research were reported in a recent issue of *The New England Journal of Medicine*. The article pointed out that norfloxacin is taken orally, making the drug

easier to administer and patients more receptive to treatment. Both penicillin and spectinomycin are injected intramuscularly.

"Norfloxacin appears to possess characteristics that could make it the drug of choice for uncomplicated gonococcal infections, particularly in areas where there is a high incidence of resistant strains," the Navy physicians wrote in their report.

MORE POWER TO YOU!

Add **PACE** To Your Serve, **IMPACT** To Your Volleys, And **CONTROL** To Your Game. We have the best nylon, synthetic and gut strings available. Let our experienced personnel help you select the proper strings so you can achieve your highest level of playing.

HEAD

TOURNAMENT EDGE

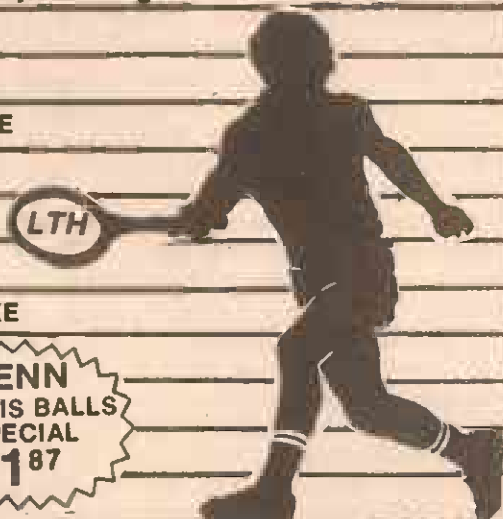
\$53⁹⁸

HEAD

GRAPHITE EDGE TXE

\$129⁹⁸

PENN
TENNIS BALLS
SPECIAL
\$1.87



While Supply Lasts!

Sale ends March 10, 1985

LARRY'S TENNIS HUB

Next to Central Pacific Bank

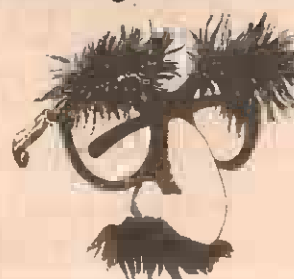
PH. 247-3633

45-1015-A KAM. HWY, KANEOHE

HOURS:

MON-FRI 8:30-5 SAT-SUN 9:30-3

It's No Disguise...



Classified advertising gives you facts that you need to make smart buying decisions. There's no puffery that will confuse and mislead. Information is presented in a simple, straightforward form. In a time when

buying facts are a consumer necessity, it's nice to know classified is around.

235-5881

2 PLUS 2

LAST CHANCE!
OFFER EXPIRES
FEBRUARY
28TH.

Sale

OFFER GOOD ON FIRST VISIT ONLY

**DON'T WAIT . . .
ACT NOW!**

- Free Aerobic Classes
- Free Racquetball
- Nautilus Equipment
- Free Weights
- Basketball
- Volleyball
- Bar & Restaurant

**HURRY
FINAL
DAY**

**JOIN THE
EXCITEMENT . . .**

**CALL FOR FREE
VISIT!**

ENTIRE CLUB IS BEING
REMODELED
JUST FOR YOU!

INTERNATIONAL

Fitness & Racquetball Centers®

Kaneohe Club • 45-608 Kam Hwy.
Windward's largest & most complete weight room! (4,000 sq. ft.)

235-5839

Grand
Opening

February 28th thru March 15th

ORIENTAL HOUSE

(formerly Aikahi Soda Stop)
Next to Safeway

AIKAHI PARK SHOPPING CENTER

FEATURING:

Korean-style plate lunches includes miso soup, kim chee, rice and vegetables; Korean-style food, hamburgers and cheeseburgers; Canadian jumbo hot dogs; Bar-B-Q Beef and Chicken and many other Oriental entrees to choose from.

FULL FOUNTAIN SERVICE FEATURING
SHAVE ICE AND DRYER'S ICE CREAM.

HOURS:
MONDAY-SATURDAY 10 A.M.-8 P.M.
CLOSED ON SUNDAYS

TAKE OUT OR EAT HERE
254-4981

Commandant...

Cont. from A-3

Marine aviation

the 1990s. With its 250-knot speed, greatly improved range, and ability to lift ground combat troops, small tactical vehicles and anti-tank units, the Osprey gives a decided boost to surface lift and the assault capabilities of the Marine Air-ground Team.

Complementing the Osprey is the CH-53E, the most powerful helicopter in the free world. With its 16-ton lift capacity, the CH-53E is capable of lifting the M-198 155mm Howitzer, the Light Armored Vehicle (LAV), and other equipment essential to a MAGTF.

A new family of ground transport vehicles is also entering Marine Corps service: The M-939 series 5-ton tactical truck. In addition, fielding of the 5/4-ton High Mobility Multipurpose, Wheeled Vehicle (HMMWV) will begin this year. The HMMWV is an "urgent" replacement, the Commandant stated, for the current, over-aged 1/4 to 5/4-ton trucks and the 1/4-ton trailer.

Of continuing importance to the Marine Corps is the reorganization of Marine infantry battalions into more firepower-intensive units, a program begun in 1983. By May of this year, all infantry battalions will have received the improved M-16A2 rifle, the new Squad Automatic Weapon, an improved M-60 machine gun, the MK-19 40mm machine gun, the M-2 .50-caliber machine gun, the Shoulder-launched Multipurpose Assault Weapon and a new 60mm company mortar.

Also continuing is the modernization of Marine Corps artillery. All towed artillery battalions will be equipped with 155mm Howitzers this year. The new M-198 Howitzers have been included in the Prepositioning programs. In addition, procurement of M-198s is planned for the Marine Corps Reserve over the next two years.

Improvements in the aviation element of the Marine Corps are equally impressive. Introduction of the AV-8B Harrier II continues, and the first AV-8B squadrons became operational this year.

The largest pilot transition requirement begins in FY-87 and will continue over the next few years. The timely introduction of the TAV-8B trainer is, the Commandant stated, "critical to the safe, efficient, and effective conversion of our remaining light attack force."

Another source of optimism is the A-6E "Intruder" upgrade to the A-6F. This upgrade, upon completion, will enhance the "Intruder's" deep strike and all-weather capabilities.

The F/A-18 continues to be well-rated. Marine aircrews report that it is a responsive, agile fighter and a highly accurate attack platform.

With an ultimate goal of 12 F/A-18 squadrons, the Marine Corps will convert its fourth and fifth squadrons at MCAS Beaufort this year. At the same time, two Marine F/A-18 squadrons will deploy this year aboard aircraft carriers as part of the Secretary of the Navy's interoperability initiative.

During FY-86, the Marine Corps will accept the first installment of its two-year buy of 44 AH-1T (Plus) attack helicopters. The incorporation of the T-700 engine in the AH-1T gives this helicopter the ability to operate anywhere in the world.

Overall, the Marine aviation community closed the year on an outstanding note: more hours flown than in any year since the Vietnam war, and the best safety record ever achieved. In addition to replacing many aircraft with more capable and reliable equipment, Marines are flying more hours and flying them more safely.

Naval surface fire support

As he has in the past, Gen.

Kelley expressed strong support for the reactivation of all four Iowa class battleships as a major measure in improving Naval surface fire support, a critical element in the naval power projection equation.

Command and control

New systems that will assist the Marine on the battlefield and that will provide commanders with the automated command control support needed on the modern battlefield, are in various stages of development and fielding.

"Our philosophy," the Commandant noted, "is to use computers to relieve Marines of repetitive routine tasks; to perform certain tasks and calculations more quickly and accurately; and to organize, file and present information to support decision-making."

To provide automated data processing support for deployed MAB or MAF units, a new system — the Deployable Force Automated Services Center — will be fielded in each MAF in the active forces and to the 4th Division/Wing team of the Marine Corps Reserve.

Intelligence

The Marine Corps intelligence effort is focused on the timely support of power projection. In addition to existing systems, other systems under development are specifically tailored to respond to the needs of deployed MAGTF commanders.

The Intelligence Analysis Center, the "heart" of the Marine Air-Ground Intelligence System (MAGIS), became operational this year. The Commandant also cited the Marine Corps' membership on the various national-level intelligence committees, and participation in the tactical exploitation of National Capabilities (TENCAP) Program.

Combat service support

To support and maintain amphibious operations at all MAGTF levels, the Marine

Corps is continuing with a major upgrade of the entire Combat Service Support Field. Increasing the manning levels of the Force Service Support Groups (FSSG), in the active forces and in the reserve component, represents, Gen. Kelley stated, "... the culmination of our Combat Service Support Restoration Plan." Under this plan, FSSG manning will be elevated considerably "from a level of concern in FY-80 to a healthy level by FY-88."

He indicated increased emphasis on Integrated Logistics Support System designs to produce better weapons and equipment and the use of proven systems in the acquisition cycle.

The Marine Corps Standard Supply System is also being designed to provide a single supply system and will replace four existing systems in the Fleet Marine Force and the supporting establishments.

Hospital ships

An area of immediate concern, the Commandant stated, is the lack of hospital ships to provide on-site medical support to deployed units. To correct this deficiency, the Navy, under the Hospital Ship Program, is converting two San Clemente class tankers into hospital ships with 1,000 beds each.

In addition, the rapidly deployable medical facility, currently afloat in the Indian Ocean and the first such facility acquired by the Navy in recent years, is providing in-theater treatment.

Retention

The past year was a banner year for the Marine Corps in across-the-board quality accessions, and retention of experienced and highly

qualified Marines. "I continue to be awed," Gen. Kelley stated, "by the character, quality and the commitment of the men and women performing the difficult missions assigned to Marines."

While all the matters discussed thus far have a high priority, nothing has a higher priority than continuing to enlist and retain quality young people who are among the finest in America.

In addition to surpassing all previous goals, total force accessions included 95 percent high school graduates (three percent above last year) with better than 96 percent in the top three AFQT categories.

The Commandant cited patriotism as the number one reason for Americans desiring to serve their country and a major factor in the recruiting success. Other factors include the dedicated efforts of the NCOs assigned as recruiters, and Congressional support in providing the resources needed for a successful recruiting effort.

Marine family

He referred to families as the Marines' "silent partners." He asked for a fair, reliable compensation system — pay, benefits, reimbursements, incentives and retirement — to help Marines and their families meet the hardships imposed by military service.

Women Marines

Women Marines will continue to serve throughout the Fleet Marine Force and supporting establishments. During the past decade, while end strength remained relatively stable, the number of women on active duty has nearly tripled to 643 officers

and 8,550 enlisted. Among the findings of the recently completed review of policies related to enlisted women Marines are: enlisted women should continue to serve in 35 of 39 occupational fields; and, the enlisted woman population should increase from the present 8,550 to about 10,500. A similar review is under way concerning women Marine officers.

Substance abuse

The Commandant reported considerable progress in the Substance Abuse Program. Drug abuse has dropped by one-half, and per capita consumption of alcohol is down by one-third from the 1980 level. The Marine Corps, he stated, will continue its intensive efforts in this regard.

Marine Corps Reserve

Reserve forces are a vital, added dimension to the Marine Corps' ability to respond to crises, Gen. Kelley stated, citing the wealth and depth of experience and expertise lodged in the reserve.

Selected Marine Corps Reservists (SMCR), once viewed primarily as a source of pre-trained individuals, now train as highly effective combat units. Individual units are tied to specific active commands in contingency planning, a concept of reinforcement now being expanded to include provision for a reserve MAGTF.

This year, the Marine Corps will activate its first SMCR unit in Anchorage, Alaska, taking advantage of the opportunity to train and conduct operations in an Arctic environment.

Other recent actions
Cont. on A-9

MILITARY PERSONNEL... \$28

Visit neighbor islands at special hotel rates... from \$28 for 2 comfortable rooms in attractive and convenient locations.

MILITARY OR KAPAMAUNA RATES <small>(All rates are for double occupancy)</small>	Standard rooms from \$28-39
	Superior rooms from \$32-44
	Deluxe rooms from \$38-48



KONA LAGOON
Kona at Keauhou/From \$28



HILO HAWAIIAN
Hilo/From \$32



MAUI BEACH
Kahului, Maui/From \$37



MAUI PALMS
Kahului, Maui/From \$28

For reservations and information, see your travel agent or call
Hawaiian Pacific Resorts
531-5235 From neighbor islands, toll-free 1-800-272-5275
Executive offices: 1150 S. King St., Honolulu, HI 96814
Need a car? Ask us about our "Room & Room" a super value hotel and car package with cars provided by DOLLAR RENT A CAR. Reservations may also be made through ALOHA AIRLINES, phone 636-1111.



WE DO PARTIES BETTER!

... 'Cause We're Professional!

We cater to every occasion, at any location.
Relax and let our professional staff make your special event a deserved success!

for more information,
Call 257-2657/257-2273

MR. ROGER WALTERS

WINDWARD ENTERTAINMENT

FISHER EXPERIENCE THE ULTIMATE

AVS 1500

150 Watt Digital Audio/Visual System with 25" Stereo Television

PC 320
25" Stereo Television-

- Multi channel TV sound decoder
- 18-button wireless remote control
- 26" (diagonal) screen
- High resolution picture
- Stereo matrix circuitry
- Stereo speaker system
- Multiply video/audio input/output jacks

\$850



FVH 830
Video Cassette Recorder

- Stereo recording
- Dolby Noise Reduction
- 105-channel electronic tuner/cable ready
- 16 preset channels
- Built-in camera power supply
- Four heads
- Front load design
- Infrared 14-function wireless remote control
- 8 hours recording
- 14-day, 9-event programming.

\$669

SYSTEM 8580 D

- CA 276B Studio Standard Integrated Stereo Amplifier
- FM 276B Studio Standard Quartz Digital Synthesized AM/FM Stereo Tuner
- CH W80B Studio Standard Dual Cassette Deck
- MT 760CB Studio Standard Fully-Automatic Programmable Linear Tracking Turntable
- AD 844B Studio Standard Compact Digital Audio Disc Player (optional)
- RA 423 Audio Component Cabinet
- BT 845 Studio Standard 3-Way Speaker System

AD 844
Compact Disk Player

Horizontal loading system
A-B Repeat, Program, Skip and Scan Play Auto-Function and synchronous recording

\$369



RA 619
Video Component Cabinet

\$81.99

\$1399

2 FREE COMPACT DISCS

FISHER

4150 B

100-Watt per Channel Linear Tracking Turntable

- CA 276B Integrated Stereo Amplifier
- 100-Watt-per-channel FM 276B AM/FM Stereo Tuner with Quartz PLL Digital Synthesizer Tuning System
- CH 408 Stereo Deck-Cassette Deck
- ST 830 12" Woofer, 3-Way Base Woofer Speaker System
- RA 540 Component Cabinet
- EQ 274 10 Band LEH Control

\$999

FISHER

8530 B

100-Watt per Channel Semi-Automatic Belt-Drive Turntable

- CA 271B Integrated Stereo Amplifier with 5-Band Graphic Equalizer
- FM 271B AM/FM Stereo Tuner with Quartz PLL Digital Synthesizer Tuning System
- CH 274B Stereo Deck-Cassette Deck
- ST 800 3-Way 12" Base Woofer Speaker System
- RA 541 Component Cabinet

\$699

FISHER

PC 210

Stereo Television

- 20" (diagonal) in-line gun slotted mask black matrix picture tube
- 140-channel cable-ready
- 2-Watt-per-channel minimum Stereo matrix circuitry for simulated stereo effect
- 2-way speaker system
- 20-button infrared remote control
- Microtune (MTC) circuitry
- AFT (Automatic Fine Tuning)
- 30-, 60- and 90-minute automatic timer shut-off system.

\$699

Price Effective February 14 thru March 3

Marine Corps Exchange

Education

Computer classes

Leeward Community College will hold a series of one-day workshops at the college's Microcomputer Resource Center.

The workshops are Mondays from 6 to 9 p.m. beginning March 11 and includes word processing, spreadsheets, data base management, and printers and peripherals.

The fee for each workshop, which can be taken independently or as a series, is \$15. Participants are encouraged to register early as space is limited to 12.

The college is also offering four sessions on word processing and a special course for parents and kids.

An introductory session in word processing begins March 12 at 6 pm. The fee for this course is \$60, which includes a \$15 lab fee.

"Parents and Kids" is a special course designed for children 4 to 8 years of age. The child must be accompanied by a parent. Two sections are offered on Saturdays: Sec. A: 8 to 10 a.m.; and Sec. B: 10:30 a.m. to 12:30 p.m. Classes begin

April 27. The fee is \$80 and limited to six couples. For more information call the college at 465-0230.

Business Seminar

A six-day seminar on Business Cycles - Economic Stability, will be conducted April 14-20 at Hickam Air Force Base.

The seminar, sponsored by the University of Oklahoma, will examine the nature, causes and record of economic instability, and other economic problems. Registration ends March 15. For information contact Joy Fife at 449-1849.

Tuition Assistance

If you are enrolling in off-duty education and are planning to use Tuition Assistance, you must submit your request before starting your courses.

"Retrospective payments will not be made to a civilian school for courses started before the individual receives his approved Request for Tuition Assistance (NAVMC 10083) form," said Capt. W.L. Clyde, OIC of the Joint Education Center, here.

According to Clyde, individuals who enroll in courses before they receive their approved request will be responsible for making all payments.

For more information, call JEC at 257-2061.

Oklahoma Univ. graduate courses

Graduate courses are offered through the University of Oklahoma leading to a fully accredited resident graduate degree.

The condensed format-one week of classes for each course, following six weeks of

self-paced preparation - was designed to overcome obstacles facing military personnel from advancing their educational objectives.

OU's worldwide locations allow students who are subject to frequent transfers, to continue graduate studies with out losing credits.

For more information call the OU representative, Joy Fife, at 449-1849.

Systems Management program

Registration is now being held for the University of Southern California's graduate program in Systems Management.

Anyone interested in earning a degree from the University of Southern California can contact Beverly Marubbio at 449-9702 or Dot Ferjo at 624-2140.



The rainy season is definitely upon us, and cars and other vehicles plowing through flooded streets will probably be seen again. While the 5.64 inches of rain, received Feb. 14, was not near the record of 11.9 inches for a 24-hour period set here in March 1958, it was still enough to plug drains, drown-out cars and drench pedestrians. If you're a newcomer to Hawaii, it's not a bad idea to keep your raingear handy... and maybe a row boat?



WAIKIKI WEEKEND LIVE!

Make this weekend come alive at your hotel - The Hale Koa - on the beach at Waikiki. Free parking at the DeRussy lots, across from the hotel. Valet parking Friday and Saturday evenings.



Al Harrington, the South Pacific Man, live in the Banyan Tree Showroom at the Saturday Dinner Show.



Pianist Ron Miyashiro, songstress Caryl Challis, and "The Sounds of Music" bring your all-time favorite songs alive, in the Warriors Lounge, Friday and Saturday nights from 9 pm to 1:30 am, and Sunday nights from 8:30 pm to 12:30 am.



TAMA's Polynesian Revue takes you from Hawaii to the islands of the South Pacific. Live in the Banyan Tree Showroom, Friday and Sunday nights.



Live dance music with the musical group "Leah" in the Mauka Lounge, 5 to 7, and 9 to 12 pm, Friday and Saturday evenings.



Start your Sunday with a Champagne Brunch in the Hale Koa Dining Room from 9 am to 1:30 pm, and then enjoy Keith and Carmen Haugen as they present the Hawaiian music of yesterday and today, in song and hula. Warriors Lounge, Sundays from 1 to 5 pm.

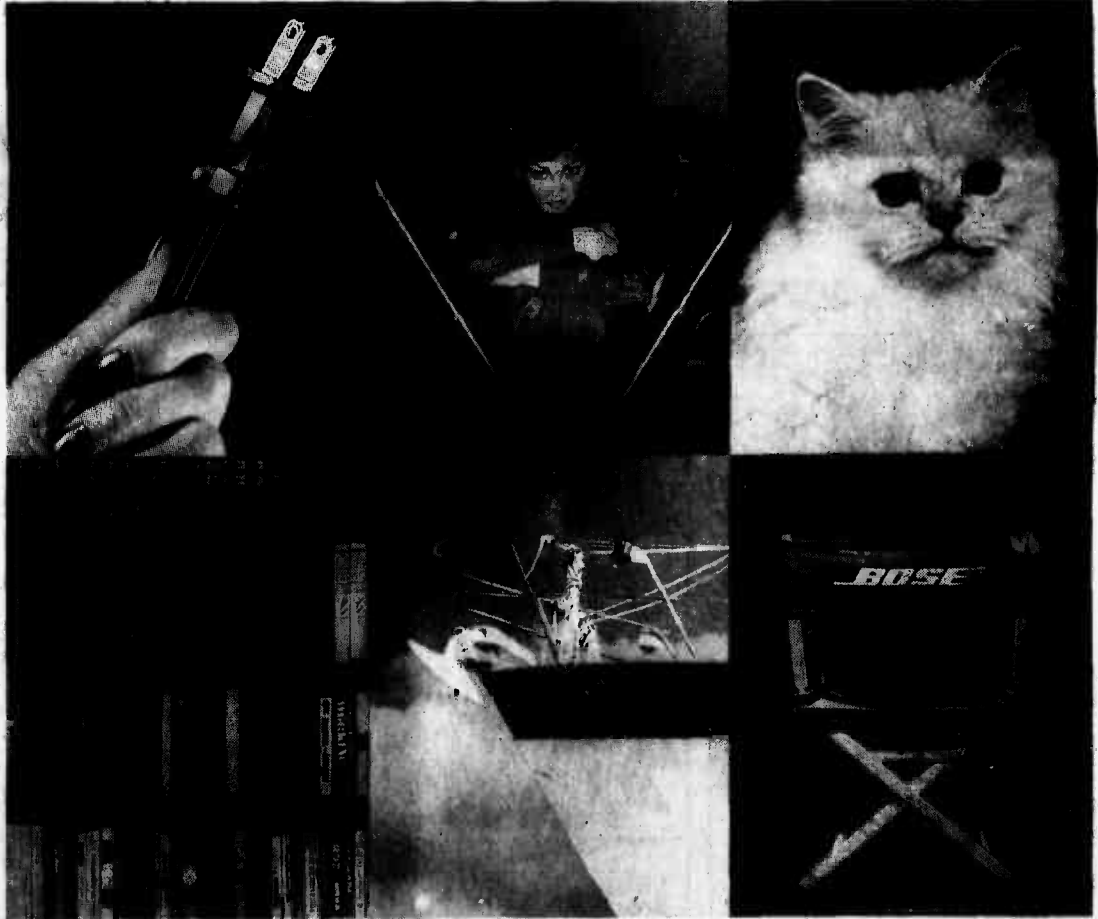
HALE KOA HOTEL
Armed Forces Recreation Center
2055 Kalia Road, Waikiki Beach
Honolulu, HI 96815-1998
Phone 955-0555

WE WON'T TELL YOU WHAT IT IS...BUT

Its simplicity will surprise you.

Its versatility will thrill you.

Its beauty will delight you.



Its size will astound you.

Its adaptability will amaze you.

And 10 seconds in this chair will convince you.

SOONER OR LATER YOU WILL OWN ONE

THE CHICAGO TRIBUNE SAID: "When this high-tech wave breaks, families all over America may find themselves buying one."

THE GLOBE AND MAIL OF CANADA SAID: "Never before have journalists—approximately 150 of them at the unveiling of the prototype—been so unanimously loud in praise of a product."

THE EVENT: Hawaii's first and only public demonstration of a major breakthrough in home entertainment.

THE DATES: Daily, Feb. 15—March 2. This new product will not be sold in any store (not even our own) and after March 2 will be shown only by private appointment in your home.

THE PRIZE: Everyone who comes to the preview shows in our theater gets a chance to WIN THE DEMONSTRATION MODEL.

BOSE
HOME ENTERTAINMENT CENTER

B12 Kapiolani Blvd, 533-4122. Free parking behind Aurora Lighting. Open Mon-Fri 10am-8pm, Sat 10am-5pm, Sun Noon-4pm.

At a glance

Black history special presentation

Gil Scott-Heron, singer and poet, and Philip E. Walker, a professional dramatic actor with a one-man show depicting black leaders, will be at the Enlisted Club here, at 7:30 p.m. Sunday.

Tickets are \$8 each and can be purchased at the Enlisted Club.

Waste and abuse

The Department of Defense Hotline's wide area telephone service has been expanded to include Alaska and Hawaii.

Individuals desiring to report instances of fraud, waste, or abuse may contact the Defense Hotline at 1-800-424-9098 or by writing to the Defense Hotline, The Pentagon, Washington, D.C. 20301-1900.

Officer augmentation/retention board

The FY-85 officer augmentation/retention board convenes May 6. Limited duty officers are encouraged to submit applications for redesignation as unrestricted officers.

All administrative action forms must be dated no later than March 15 for eligible officers to receive separation pay. All retention/redesignation requests must be received by April 8, and all late applications must be received by May 6. The board results will be released July 1.

For more information see AIMar 36/85.

OWC luncheon

The Officers Wives Club

will host a luncheon March 12 with guest speaker and author Milly Singletary.

Singletary is an author of life in Hawaii and has published several books including "Party Planner" and "Three Days in Downtown Honolulu."

The luncheon theme is St. Patrick's Day and the menu will include a fruit cup, Reuben sandwich, hot potato salad and lime sherbert.

Social hour is 10:30 to 11 a.m. Singletary will speak at 11 and lunch will be served at noon. Cost is \$6.

Reservation deadline is Tuesday, and should be sent to JoAnn Bisak at 1756 Lawrence, Kailua, HI 96734.

State tax forms available

Individuals who have not received their state income tax packages can contact the Legal Assistance Office, Building 256, at 2160/2168.

Forms from the following states are available: Alabama, Arizona, Colorado, Connecticut, Georgia, Iowa, Kansas, Kentucky, Maryland and Mississippi.

Also Montana, Nebraska, North Carolina, North Dakota, Ohio, Rhode Island, Tennessee, West Virginia and Wisconsin.

Active duty members and their families may consult the Legal Assistance Office from 7:30 to 9 a.m. Monday through Friday, for advice concerning special income tax rules for their respective states.

Witnesses sought

Witnesses to an incident which occurred Dec. 24, 1984, between 10 and 10:30 p.m., on Kahekili Highway, in Temple Valley, are being sought by

the family of the victim.

If you know of anyone who was a witness, or have any information about the incident, call 239-5579 between 5 and 9 p.m., or send your name and telephone number to: Witness, P.O. Box 839, Kaneohe, HI 96744.

Clinic rules

To protect healthy children from communicable diseases, allow patients to be in relative comfort while awaiting treatment, and let clinic staff provide services, only children who are receiving treatment will be allowed in the Branch Medical Clinic, here.

Arrangements should be made to have children cared for while parents are at the clinic receiving treatment or undergoing examinations.

This policy also applies to well-baby checks, school and sports physicals, as well as acute care appointments.

MADD

Anyone wishing to join or contribute to Mothers Against Drunk Driving should contact Naida Malchiodi at 262-4374 or write MADD, Honolulu Chapter, Membership Office, 1314 S. King St., Suite 1256, Honolulu, HI 96814.

Camp Smith Library hours

Camp H.M. Smith hours of operation have been extended from 8 a.m. to 8 p.m., Monday through Friday. The library is closed weekends and holidays.

Toastmasters

The Toastmasters of Naval Ocean Systems Center, here, are looking for new members wanting to improve their communication skills and

meet new people. The group meets the second and fourth Tuesday of the month.

For more information call Capt. J. Yauch at 257-2812, Owen Norton at 257-2128 or Mike Shimamoto at 254-4344.

Direct Deposit toll free number

The Marine Corps Finance Center is operating a toll-free telephone inquiry service for active duty Direct Deposit participants.

Direct Deposit inquiries can be made by Marines on leave, TAD, or enroute on PCS orders within the continental United States, who need to know how much

money was transmitted to their financial institution on payday.

The service is available from 7 a.m. to 3 p.m., central time, Monday through Friday. The toll-free numbers are 800-892-2025 or 800-892-3010 for Missouri residents only.

Mail forwarding fees change

Postal customers who move out of the Honolulu 96800 Zip Code area no longer have to pay a fee to have their magazines, newspapers and other second-class mail forwarded, according to Postmaster Michio Harada.

"Changes made effective Feb. 17 allow all second-class items to be forwarded nationwide, without charge, for 60 days from the date of a change-of-address order effective," Harada said.

Before, all second-class mail was forwarded for 90 days, but the customer paid for forwarding when the publication was sent beyond a local delivery area.

Other changes include elimination of a forwarding fee on parcels on which First-Class postage has been paid (Priority Mail); return of post and postal cards to senders with address correction without additional charge; and elimination of address correction fees incidental to return of a mail piece unless the correction is provided as a separate notice.

FISHER FISHER FISHER FISHER FISHER FISHER FISHER FISHER



FISHER FVH 720

FREE!
1 Year Membership to Home Video with purchase

ONLY \$339

Studio Standard VHS Video Cassette Recorder


- *Power driven front-loading mechanism with tape-in indicator
- *105-channel cable ready tuner with 12 present channels
- *9-day/1-event programmable timer with everyday function
- *Cue, review, and still playback functions (EP mode only)
- *8-function WIRELESS infrared remote control

Available At

Marine Corps Exchange
Kaneohe Bay

This ad not paid for by Marine Corps Exchange


FISHER FISHER FISHER FISHER FISHER FISHER FISHER FISHER




WHEN IT'S BASKETBALL, HAWAII TUNES TO

KKUA
HAWAII'S #100.3 FM

Live Play by Play with



Jim Leahey



Artie Wilson

WV US. SOUTHWESTERN LOUISIANA
FRIDAY, MARCH 1 7:35 PM

WEAR-DATED® CARPETS OF ULTRON® Nylon ARE ON SALE!

QUALITY CARPET NOW UP TO 50% OFF!

True quality, value and savings are yours now at Pearl Harbor and Barbers Point Navy Exchanges. Choose from our most popular WEAR-DATED® carpets in a beautiful array of colors. But that's not all! We've slashed prices up to 50% to bring you this fantastic selection at super savings. But there's no time to waste. Hurry in today and save!

SAVE UP TO 50%

SAVE \$6.00

SOLID SAXONY PUSLH \$9.95 per sq.yd.
Sug. Retail \$15.95

SAVE \$8.20

STONE ON-TONE SCULPTURE \$11.75 per sq.yd.
Sug. Retail \$19.95

SAVE \$12.00

***MULTITONE SCULPTURE** \$11.95 per sq.yd.
Sug. Retail \$23.95

SAVE \$9.20

LINT-FREE SAXONY PUSLH \$12.75 per sq.yd.
Sug. Retail \$21.95

SAVE \$9.20

MULTICOLOR SCULPTURE \$12.75 per sq.yd.
Sug. Retail \$21.95

SAVE \$12.00

***SOLID SAXONY PILE** \$13.95 per sq.yd.
Sug. Retail \$25.95

SAVE \$11.60

ELEGANT SAXONY PUSLH \$14.85 per sq.yd.
Sug. Retail \$26.45

SAVE \$11.10

THICK SAXONY PUSLH \$17.85 per sq.yd.
Sug. Retail \$31.95

SAVE \$15.70

LINT-FREE VELVET PUSLH \$18.25 per sq.yd.
Sug. Retail \$33.95

*Limited to Honolulu stock only. Carpet only. Pad & professional installation is available.

Pearl Harbor Navy Exchange
Interiors Plus
Phone: 422-8767
Regular Store Hours:
Mon-Sat 9:30 am to 7:00 pm
Sunday 9:30 am to 5:30 pm

Barbers Point Navy Exchange
Rainbow Annex Furniture Store
Bldg. #141
Phone: 892-5828
Regular Store Hours:
Mon-Fri 10:00 am to 6:00 pm
Saturday 10:00 am to 4:00 pm
Sunday closed

Sale starts February 21, 1985
Sale ends March 3, 1985

This ad was not paid for by the Navy Exchange.

Reservists . . .

Cont. from A-1

when poured. Several Marines from the

Utilities Section filled approximately 3,000 sandbags used to hold the forms in

place and fill low spots.

Pouring of the wall began Tuesday, with an estimated 250 yards of concrete used to form the wall and slabs at the site.

According to McCabe, who

is the Station reserve liaison officer, the quality of work is higher than that of active duty personnel because of the age and experience level of the reservists.

"The operation serves a dual purpose," added McCabe. "The reservists receive active duty training in different terrains, and

twice as much work for the funds expended - a benefit of expertise at minimal costs," McCabe commented.

"The initial support of material and equipment from Facilities Maintenance Department has been excellent," said LtCol. Scott Hendrickson, commanding officer of WES-47. "The type of training has been

meaningful and challenging, and when we leave we will have contributed to the Station, and be better skilled because of the training received.

Speaking for all the visiting reservists, Hendrickson said in closing, "We look forward to coming back and providing the same quality service in the future."



PFC Randy VanMarteir (l), Cpl. John Corpus, and LCpl. Timothy Aherns, reservists from WES-40, break up the floor boards of a demolished supply shed taken down in the 3d Marines' area.

Commandant

Cont. from A-6

include activation of an LAV battalion; a target acquisition battery; the remainder of the 4th Medical and Dental Battalions; and the reorganization of infantry and direct-support artillery battalions.

Reserve aviation is also moving into a new era. A third fighter squadron has been activated and a second KC-130 squadron is planned. Boosting the assets and capabilities of the 4th MAW are front-line aircraft released from the active force. Plans are under way to upgrade all reserve fighter and some attack squadrons to the F/A-18.

While manpower and equipment are important elements of the readiness equation, it is training that cements the relationship and transforms the individual Marine and his unit into combat power," the Commandant stressed.

Combat training in the reserves has taken a new direction, with home centers no longer the focal point. The Marine Corps is increasing reserve participation and integration in major active force exercises. In 1984, 25,000 Marine reservists trained in exercises around the world, from Puerto Rico to Korea.

The success of the total force policy is already evident. Last year, a reserve squadron, VMFA-112, in Dallas, competing with all active and reserve fighter squadrons, earned the distinction of being designated the Marine Corps "Fighter Squadron of the Year."

In August, the first brigade-sized reserve landing since the Korean War was conducted.

Addressing his final remarks directly to Congress, the Commandant concluded:

"Marines . . . have the unique capability, unmatched anywhere in the world today, to make a forcible entry from the sea with a fully integrated, mission-tailored, combined-arms, self-sustaining air-ground team. We enable our country to keep the qualitative edge needed to provide a decisive, flexible, credible response by amphibious forces in global crises.

"Together," he continued, "we prepare for the call that may or may not come - the call to 'land the landing force.' As Marines, we do not determine when or if that call will come. I can assure you, that, with your support, we are ready and will remain ready to respond to that call. At the same time, we continue to share the hope that the call will not be sounded.

"For 209 years, Marines have served this nation well and faithfully. I assure you, that tradition will continue."

Hawaiian Spectacular! ROLL 'EM OUT

NO TRADE NEEDED **FREE MOUNTING** **SALE ENDS MARCH 2**

SALE

SUPER SAVINGS on these Super Tires

- G-METRIC RADIAL** \$35⁵⁵
155/SR12 Blackwall No Trade Needed
- CUSHION BELT** \$32⁰⁰
878-13 Whitewall No Trade Needed
- POWER STREAK II BLACKWALL** \$23⁹⁵
A78-13 Blackwall No Trade Needed
- TIEMPO STEEL RADIAL** \$35⁹⁵
155/80R13 Whitewall No Trade Needed
- G-METRIC RADIAL** \$44⁸⁰
175/70SR13 Blackwall No Trade Needed

BIAS PLY BARGAINS MORE WAYS TO SAVE ON GOODYEAR STEEL RADIALS

POWER STREAK II WHITEWALLS		CUSTOM POLYSTEEL RADIAL WHITEWALLS		ARRIVA ALL SEASON RADIAL BLACKWALLS	
Size	SALE PRICE	Whitewall Size	SALE PRICE	Blackwall Size	SALE PRICE
B78-13	\$27.80 \$29.95	P175/80R13	\$52.00	P145/80R13	\$46.00
C78-14	\$28.70 \$32.05	P185/80R13	\$55.65	P155/80R13	\$48.00
D78-14	\$29.65 \$33.10	P175/75R14	\$53.90	P165/80R13	\$53.30
E78-14	\$30.70 \$33.85	P185/75R14	\$58.30	P175/80R13	\$55.45
F78-14	\$33.10 \$36.00	P195/75R14	\$60.80	P165/80R15	\$56.90
G78-14	\$37.20 \$39.20	P205/75R15	\$64.30	P165/70R13	\$52.80
H78-14	\$38.50 \$41.65	P215/75R14	\$67.90	P175/70R13	\$56.30
600-15	\$31.00	P225/75R14	\$71.40	P185/70R13	\$59.00
E78-15	\$32.10 \$35.25	P205/75R15	\$66.90	P185/70R14	\$63.75
F78-15	\$34.20 \$37.40	P215/75R15	\$69.90		
G78-15	\$37.25 \$40.25	P225/75R15	\$73.90		
H78-15	\$38.30 \$43.30	P235/75R15	\$76.30		
L78-15	\$44.50				

HIGH PERFORMANCE RADIALS LIGHT TRUCK TIRES

EAGLE ST RAISED WHITE LETTERS

Raised White Letter Size	SALE PRICE
P185/70R13	\$44.00
P195/70R13	\$71.20
P195/70R14	\$71.65
P205/70R14	\$76.50
P225/70R14	\$78.33
P225/70R14	\$80.80
P225/70R15	\$82.75
P235/70R15	\$86.05
P205/60R13	\$64.65
P235/60R14	\$83.25
P245/60R14	\$83.30
P245/60R15	\$89.10
P255/60R15	\$92.85
P275/60R15	\$99.45

TRACKER A-T Outline White Letters

Goodyear's Popular All Wheel, All Terrain, 4WD Tire

Outline White Letter Size	Load Range	FEET	SALE PRICE
9-15	B	—	\$82.57
10-15	B	\$0.59	\$88.09
10-15	C	\$0.54	\$91.77
11-15	B	\$1.13	\$91.77

NO TRADE-IN NEEDED FOR ANY TIRE LISTED IN THIS AD!

LET US CREATE THE NEW YOU!

BEFORE AFTER

BILL RIZZO'S INTERNATIONAL HAIRCUTTERS

MONDAY THRU FRIDAY 9:00 AM-9:00 PM
SATURDAY 9:00 AM-5:00 PM SUNDAY 10:00 AM-4 PM

AIKAHI PARK SHOPPING CENTER Kailua 254-1585
KANEOHE BAY SHOPPING CENTER Kaneohe 235-7515

PERM SPECIAL \$35 (Condition, Shampoo, Perm, Cut and Blowdry included) (Long Hair Slightly Higher)
HAIRCUTS \$10 (Shampoo and Condition included)

MOUNT VERNON HOLDS DOWN MILITARY SPENDING. WE'LL SPEND FOR AIRFARE

for your house-hunting trip

RECEIVE your own **GREATER WASHINGTON, D.C.** relocation kit with information on housing, schools, transportation, financing, and more. VIEW our new VIDEO on HOUSING in the D.C. area.

FEBRUARY 22 - MARCH 3 AIRPORT HOLIDAY INN 3401 Nimitz Hwy. 8:00 AM - 8:00 PM

CALL: (808) 949-3811 (ILIKAI Hotel) or (808) 636-0681 (Holiday Inn)

ASK FOR: Molly Mercer or Mt. Vernon Relocation FOR DETAILS ON A ONE-HOUR FORUM (Appointments Suggested)

41 Offices in Virginia, Maryland, and Wash., D.C.

QUICK CREDIT FROM CITIBANK

Use The Silver Card nationwide at participating Goodyear retail outlets. You may also use this other way to buy: American Express, Carls, Blanche, Diners Club, MasterCard, Visa.

PRICES AND CREDIT TERMS SHOWN ARE AVAILABLE AT GOODYEAR AUTO SERVICE CENTERS. SEE ANY OF THE BELOW LISTED INDEPENDENT DEALERS FOR THEIR COMPETITIVE PRICES AND CREDIT TERMS.

GOODYEAR

GOODYEAR INDEPENDENT DEALERS		GOODYEAR AUTO SERV. CTRS.	
DOWNTOWN Motor Supply, Ltd. 1391 Kapiolani Blvd. Phone: 946-8311	WAIKAPU Gom Automotive Center 96-144 Kapiolani Hwy. Phone: 671-0538	HILO Motor Supply, Ltd. 178 Kilauea St. Phone: 935-8626	AIEA Wahala Plaza Shopping Center 98-1277 Koolanui Center Phone: 487-0066
KAILUA Motor Supply, Ltd. 734 Kailua Rd. Phone: 261-1741	KAUAI Garden Island Motors, Ltd. 2000 Nanea Rd. Phone: 245-6711	MAUI Maui Shopping Service, Inc. 702 Lower Main St. Waikaloa Phone: 244-8074	KANEOHE Kaneohe Bay Shopping Center 44-047 Kaa Highway Phone: 247-6668
KAPALAMA Gom Automotive Center 1199 Olohehena Hwy. Phone: 845-5958	KONA Pacific Island Tire 75-5499 Palani Rd. Phone: 329-8826	MILLANI SHOPPING CTR. 96-390 Kuluohani Ave. Phone: 825-1477	HILO 673 Kilauea Avenue Phone: 935-9756

#0231

MAU update

by SSgt. Bob Torres

Wogs transform into Shellbacks at Equator

Aboard the USS Tuscaloosa (Delayed) — The knees hurt; the hair was covered with a vile concoction; the body was covered with slime; and before him sat the "Royal Baby."

This was "Wog Day" aboard the USS Tuscaloosa. On the morning of Jan. 18, the "slimy, lowly pollywogs dared to enter the Royal domain of Neptunus Rex, master of the seas.

As the ship steamed toward latitude 0 degree, the Trusty Shellbacks, comprised of sailors and Marines, who had previously crossed the equator by ship, were determined to ensure that the ship was fit to cross into the master's domain.

The ceremony, which has gone on for decades, happens when the wrath of Neptune is incurred by the slimy wogs as they try to slip into the majesty's domain without proper subservience.

The rites begin when anyone who has not crossed the equator is issued a subpoena filled with charges affecting his unworthiness. On the day before entering the royal realm of Neptunus Rex, Davey Jones, the infamous keeper of the deep, boards the ship and challenges the captain's authority in entering this royal domain.

The captain of the ship, Cmdr. David J. Montgomery, welcomes Davey Jones aboard and offers his slimy wogs as tribute to the sovereign master. In the meantime, entertainment was offered to Davey Jones in the way of a "beauty contest."

Beauty Queen competition

Marines and sailors selected from different sections vied for the opportunity to become the beauty queen and be exempt from participating in the initiation. As Trusty Shellbacks gathered on the

fo'c'sle, the "ladies" wore their garb and strutted their stuff before Davey Jones, the captain and other assembled guests.

Finally, Davey Jones and the captain conferred and the finalists were called back to pose again. GMG-2 Jeff Sturgess won the honor decked out in dress purchased in Bangladesh.

Biggest sailer aboard

The "baby" is usually the biggest sailer aboard, dressed in a diaper, and who's belly is covered with the vilest green concoction imagined. As the wog lowered his head to kiss the belly, the "baby" would laugh as he held the wog's head in both hands and rub his face into the mixture.

If the wog was fortunate enough to get the "green light" and continue, then it was time to leap into a vat filled with ripe apples, tomatoes and other assorted food stuffs and swim to the other side.

The wog would then get a special "message" to ease his aching body as he sat in the Royal Dentist's chair. Gook was applied to the wog's hair as the dentist applied his brand of treatment using a catsup dispenser into the mouth of the wog.

Moving from his chair, most wogs spit out the unsavory concoction and moved to the Royal Stock's where they willingly bent their heads and allowed the stocks to fall over their head and wrists as they were help captive. Then, whatever the Royal Judge had proclaimed as their punishment was meted out.

Finally, the tired and slime-covered wog was taken to the Royal Tub where he was allowed to "jump" in, and when queried by Trusty Shellbacks what he was, allowed to answer as he saw fit. Those wogs, who through habit answered, "polly wog sir!", were again dunked in the tub. When the

wog finally got the idea and sputtered, "Shellback, Sir!", then he was allowed to climb out, his hand was shaken, and the now mighty Trusty Shellback

was allowed to clean up and join the festivities, or simply stand and watch other slimy wogs become, Trusty Shellbacks.



PO-1 Brian Cole sputters, "Shellback, sir!", as he is unceremoniously dunked in the Royal Tub.

KLNI
 1380 ON YOUR DIAL
 BEST MUSIC ON THE ISLAND
 TRY IT AND SEE
 THE TOM ADAMS SHOW 5 A.M. TO 9 A.M.
 GREAT MUSIC, JOKE, AND FREE STUFF

LOW COST DIVORCE
 Divorce & Family Law Services
 Law Office Of Ray Asasaki & Associates
 680 Ala Moana Blvd. Suite 304
545-5755
 Validated Parking

TEAZERS
 HAIR & BODY CARE
WELCOME BACK NADINE
 (Formerly of HEAD-ON)
 NOW Featuring **CELLOPHANE COLOR SPECIAL**
 20% OFF
 NOW OFFERING **MEMBERSHIPS**
 40% Discounts-Savings
 (Call For Details)
BODY CONTOURING
 (Non-Surgical)
 See us at the **FOOD & NEW PRODUCTS**
 Show
 Non-Surgical **FACE-LIFT**
 (Non-Surgical)
 1151 Kalia Rd. #114
 220 MAUNO STREET
251-5778



NOW FLY DELTA NONSTOP TO DALLAS/FT. WORTH, THROUGH TO ATLANTA

Make easy Delta connections for many other cities. Or fly Delta from L.A. or San Francisco to cities across the U.S.

Leave Honolulu any evening at 6:40pm aboard our Wide-Rid^{er} TriStar for arrival in Dallas/Ft. Worth or Atlanta next morning. Enjoy a delicious dinner en route and a first-run movie.

In Dallas/Ft. Worth connect with Delta flights to cities throughout Texas. Or fly on to your choice of dozens of other cities, including Kansas City, New Orleans or Boston.

In Atlanta connect with Delta flights to over 60 cities, including Florida's major resorts, Montgomery, Charleston, SC, Charlotte or Washington.

Or fly Delta nonstop from Los Angeles to Atlanta, Dallas/Ft. Worth, San Francisco, Cincinnati, Chicago, Denver, Detroit, Houston, Indianapolis, Kansas City, Miami, Minneapolis, New York, Philadelphia, Portland, St. Louis, Tampa, and Washington.

From Delta's San Francisco hub fly nonstop to Atlanta, Cincinnati, Dallas/Ft. Worth or Los Angeles. Or straight through to New Orleans, Ft. Lauderdale, Orlando (home of EPCOT Center/Walt Disney World), Jackson, Philadelphia or San Antonio.

Save up to 75% with Delta's new Plan-Ahead Discount Fares--for travel between cities within the continental U.S. Make reservations at least 30 days ahead; purchase your ticket within 14 days after you make your reservations. Check for details.

Or save 25% off with our special Military Fare. No advance purchase requirements. You don't fly stand-by. You can get on any flight, at any time, that has available space.

Check your on-base Scheduled Airline Ticket Office (SATO) or call Delta for details and current fares. All schedules are subject to change without notice.

*Small charges for headsets in Transit.

Starting June 1

Delta nonstop to Atlanta on Monday except during peak times. We'll also have nonstop service to Dallas, Denver, Detroit, Houston, Indianapolis, Kansas City, Minneapolis, New York, Philadelphia, Portland, St. Louis, Tampa, and Washington.



GO SOUTH THERE

Salutes

EDITOR'S NOTE: Salutes recognizes individuals for their achievements and exceptional performance and welcomes arrivals to Hawaii. The information is compiled by Unit Information Officers in conjunction with Fleet Home Town News Releases submitted to the Joint Public Affairs Office.

Cpl. D.F. Dowty
Cpl. R.G. Hillgrube
Sgt. E.J. Zamarripa
Promotions
LCpl. D.J. Albin
LCpl. G.D. Mayden
GySgt. L.D. Johnson

BSSG
Welcome aboard
PFC D.L. Bachofen
LCpl. P.E. Adams
LCpl. J.A. Carlisle
LCpl. F.W. Davis
LCpl. S.S. Doppler

LCpl. J.F. Eisner
LCpl. M.D. Greene
LCpl. J.S. Hazellhurst
LCpl. B. Myers
LCpl. E.H. Nerad
LCpl. S.M. Pass
Cpl. E.C. Anderson

Cpl. J.A. Garcia
Cpl. F.L. Jones
Cpl. J.K. Lee
Cpl. N.W. Pinchefskey
Cpl. J.C. Playford Jr.
Sgt. R.A. Bergman
Sgt. J.A. Midence
SSgt. G.J. Riopel
GySgt. C.E. Parr
GySgt. B.R. Whited

Cpl. D.J. Shreeve Jr.
Sgt. C.J. Wilson
Certificates of Appreciation
Cpl. W.W. Phillips
Sgt. J.A. Orman Jr.
SSgt. K.C. Brame
Letters of Appreciation
LCpl. T.G. Smith Jr.
Cpl. A.W. McGraw
Cpl. C.W. Melvin
Cpl. S.N. Rinehardt
Cpl. S.L. Ringer
Cpl. T.A. Sipp
Sgt. C.E. Lahti
SSgt. G.A. Kohl
Letter of Recognition
Sgt. R.L. Whitlock II
NCO of the Quarter
Cpl. S.P. Brodie



Col. George R. Christmas, CO of 3d Marines, promoted three Marines during Operation Kernel Blitz on the Big Island. They are LCpls. Ulton Ellison Jr. (l) and Patrick Johnson, and PFC Quincy Chappel, all from HqCo., 3d Marines' communications section. SgtMaj. F. Puliafico assisted Christmas during the promotion ceremony.

Promotions
LCpl. C. Lewis
LCpl. K.L. Moore
LCpl. R.E. Strong
LCpl. D.L. Tourek
Sgt. C.V. Coon
Sgt. V.J. Davis
Sgt. M.P. Gosselin
GySgt. M.J. Jubrey
MSgt. N.M. Suiatunoa

Meritorious promotion
Sgt. D.A. Beasley
Navy Achievement Medal
DTC R.C. Panepinto

Certificates of Commendation

LCpl. C.S. Alley
Cpl. D.J. O'Sullivan
SSgt. C.E. Hughes

Meritorious Masts
LCpl. E.L. Deshong
LCpl. B.K. Sams
LCpl. A.J. Larranaga
LCpl. P.S. Holmes
Cpl. M.R. Gregory
Cpl. W.J. Kiefer Jr.
Cpl. S.E. Smith
Cpl. C.J. Blodgett

Good Conduct Medals
Cpl. B.A. Lamie

SOMS
Welcome aboard
Sgt. D.E. Ruth
Reenlistment
SSgt. R.M. McBratney Jr.

3/3
Welcome aboard
Cpl. D.A. Reid
2ndLt. J.L. Mayer

Promotions
LCpl. D.L. Eakins
LCpl. D. Halliburton
LCpl. J.R. Hollowell
LCpl. K.J. Harraza Jr.
LCpl. G.R. Riggs
LCpl. R.K. Roland

Cont. on A-12

Your smartest move may be a lateral one.

If you're not content with your present job, if you're looking to broaden your experience, learn a new job or seeking a new challenge, a lateral move may be just what you're looking for. Every year thousands of Marines take advantage of the lateral move option.

The advantages are many. You keep building your retirement, keep increasing in rank and you're working within an organization you know something about. In short, you're not starting over. You're taking a new direction in your career.

If you don't think you qualify for a lateral move because your GT score is low, think again. You can take the test over any number of times and use only your most recent score.

Plus you're keeping your educational and medical benefits. Talk to your career planner about a lateral move.



You can count on the Corps.

STAY MARINE.

See your Career Planner

You'll get straight talk. Answers to your questions. And a fair look at all the Corps has to offer.

HQCQ, 1st Marine Bde.
Sgt. White
257-3670

1stBn, 3rd Marines
SSgt. Sechler
257-2434

BSSG
SSgt. Espinosa/SSgt. Napoleon
Sgt. Barraza/Sgt. Shields
257-3127

MACS-2
GySgt. Hudson
257-2995

VMFA-212
SSgt. Doyle
257-2024

CommSptCo
Sgt. Fernandez
257-3632

FMFPac
GySgt. Johnson
477-5090

HQCO, 3d Marines
SSgt. Iriarte/SSgt. Thibodeau
257-2758

1stBn, 12th Marines
SSgt. Cadman
257-3225

MAG-24
MSgt. Dukes
257-2285

HMM-165
SSgt. Rivera
257-3123

VMFA-235
Sgt. McCoy
257-2847

H&HS
SSgt. Drost

MarBks, Pearl Harbor
SSgt. Hall
471-9516

Stay Marine.

Salutes

Cont. from A-11

LCpl. G.F. Williams
LCpl. H. Williams
Cpl. T.N. Emert

Reenlistments

Cpl. R.B. Weese
Sgt. J.O. Keyes

1/12

Welcome aboard

Pvt. J.E. Betts
Pvt. J.B. Brackett
Pvt. R.E. Eriksson
Pvt. M.J. Juarez
Pvt. R.L. Miller
Pvt. D.F. Moore
Pvt. S. Petkovsek
Pvt. S.A. Philipp
Pvt. W.H. Vandyke
Pvt. L.E. Powers
Pvt. S.W. Ricci
Pvt. R.G. Sanfilippo

PFC G.J. Bettinger
PFC C.C. Deleon
PFC L.G. Elkins Jr.
PFC C.W. Stanton
LCpl. T.P. Hickie
LCpl. J.I. Perez
LCpl. B.I. Reider
LCpl. W.C. Richards
Cpl. M.A. Jury
Cpl. S.P. Parker
Cpl. B.K. Roerber
Cpl. K.D. Torain
Cpl. W.B. Vanscoter
Cpl. A.G. Whited
Cpl. K.B. York
Sgt. M.C. Freres
Sgt. E.B. Howard
Sgt. P.J. Lopez
SSgt. J.C. Nelson

Promotions

LCpl. E.J. Defosse
LCpl. I. Pena

Meritorious Mast

LCpl. M.R. Bensch
LCpl. A.J. Horak
LCpl. R.L. Keenan
Cpl. B.J. Cronan
Cpl. D.M. Fitzpatrick
Cpl. W.D. Hadlock
Cpl. G.A. Wadsworth

BSSG

Welcome aboard

PFC D.A. Meyer
LCpl. D. Mannion
LCpl. A.M. McClam
LCpl. G.L. Hudson
Cpl. M.P. Theriault
Cpl. R.D. Urban
Cpl. S.A. Walker
Cpl. E.D. Young
Sgt. M.A. Lyon

Sgt. T.A. McGovern

Sgt. P.W. Williams

Promotions

Cpl. C.S. Alley
Cpl. J.R. Colon
Cpl. A. Diaz
Cpl. R.C. Dewolf Jr.
Cpl. K.J. Dressel
Cpl. L. Gonzalez
Cpl. M.T. Janopoulos
Cpl. I. Salinas
Cpl. T.C. Shelby
Cpl. T.K. Taylor
Cpl. R.B. Zigler

Certificate of Commendation

SSgt. M.A. Simmons
Meritorious Mast
LCpl. M.D. Zammit

Good Conduct Medals

LCpl. M.E. Waich
Cpl. D.F. Ludwig
Cpl. D.M. Richardson
Sgt. M.D. Decard

Reenlistments

Cpl. K.L. Clark

MABS-24

Promotions

PFC C.J. Kullen
PFC C. Ochoa
PFC J. Ramos
PFC A. Samojlik
PFC G.P. Sullivan
LCpl. L.E. Karr
LCpl. G. Kefalides
LCpl. A.R. Piasecki
Cpl. J.P. Gustafson
Cpl. M.W. McVicker

Meritorious promotions

Cpl. K.R. Blick

Good Conduct Medals

Cpl. B.A. Ford
Cpl. F.W. Rhoden
Cpl. L. Sayles
Cpl. P.K. Wiley
Sgt. W.G. Pugh
Sgt. M.W. Tyson

Reenlistments

LCpl. M.A. Wagner
Cpl. S.L. Ede
Cpl. H.W. Helstein
Cpl. P.A. Stafford
Sgt. N. Fowler
SSgt. R.S. Lowe



GySgt. Ted W. Harmon, Facilities Department, receives the Navy Achievement Medal from Col. C.D. Robinson, Air Station commanding officer, for superior performance of duty while serving as company gunnery sergeant, Co. B and subsequently as range staff NCO-in-charge, 2d Combat Engineer Battalion, 2d Marine Division, Camp Lejeune, from May 22, 1982 to July 25, 1984.



Maj. James B. Ramsden, Family Service Center, receives the Navy Commendation Medal from Col. C.D. Robinson, Air Station commanding officer, for meritorious achievement while serving as airfield operations officer with SOMS, here, from June 16, 1982 to June 11, 1984.



MSgt. Kenneth L. Garner, SOMS Aircraft Maintenance, receives the Navy Commendation Medal from Col. C.D. Robinson, Air Station commanding officer, for meritorious service while serving as maintenance chief, for HMM-163, MAG-16, MCAS El Toro, Calif., from Nov. 16, 1982 to April 5, 1984.

© 1985 R.J. REYNOLDS TOBACCO CO.

9 mg. "tar", 0.8 mg. nicotine av. per cigarette by FTC method.

DIVORCE

LOW FEES * NO CHARGE FOR INITIAL CONSULTATION

DOWNTOWN

545-7400

820 MILILANI ST.
HK BLDG. STE. #612

WINDWARD

261-3233

415 A ULUNIU
KAILUA

LAW OFFICES
OF NOAH D. FIDDLER

FACTORY AUTHORIZED PANASONIC[®] MICROWAVE OVEN SALE!

BEING ONE OF PANASONIC'S BEST DEALERS IN HAWAII, THEY HAVE ASKED US TO LIQUIDATE ALL OUR DEMO AND NEW 1984 MODELS AT PRACTICALLY BELOW

WHOLESALE COST!

HERE'S JUST "ONE EXAMPLE" THE FABULOUS GENIUS! AUTOMATIC COOKING AT THE TOUCH OF A SINGLE CONTROL.



OTHER PANASONIC SUPER SPECIALS

- NE-7850 Demo \$319
Sug. Retail
- NE-8050 Demo \$369
Sug. Retail
- NE-9830 Demo \$469
Sug. Retail
- NE-9930 Demo \$559
Sug. Retail

FREE!

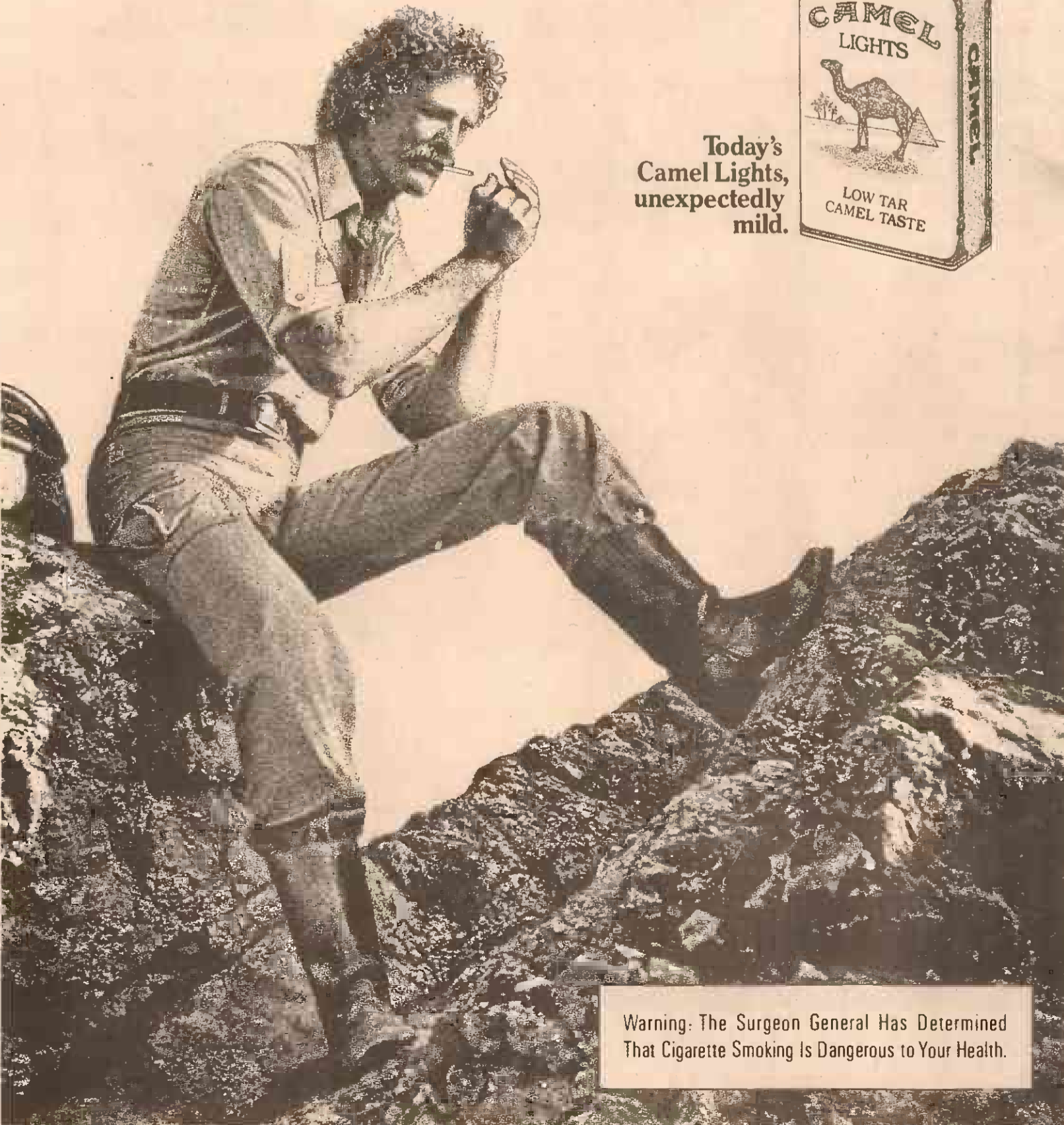
COOKBOOK
(Value 12.95)
with oven purchase

SALE ENDS 3/3/85

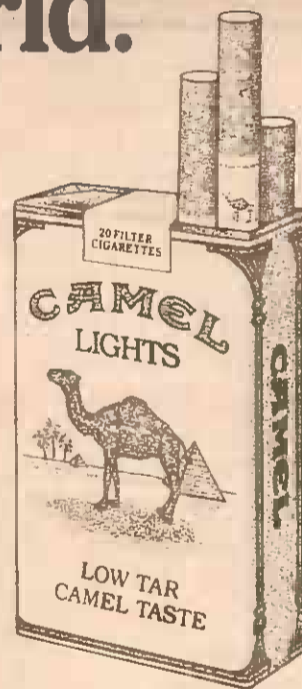
PACIFIC SURPLUS & DISTRIBUTORS
262-8131 455-9010
1247-F KAILUA RD. 98-593 KAM HWY.
KAILUA IN THE 7-11 COMPLEX SUNDAY CLOSED PEARL CITY BY DOMINOS PIZZA

CAMEL LIGHTS

It's a whole new world.



Today's
Camel Lights,
unexpectedly
mild.



Warning: The Surgeon General Has Determined That Cigarette Smoking Is Dangerous to Your Health.

B Hawaii Marine

February 28, 1985



Capt. R.J. Barlow, from the BSSG team, calls for a plug to challenge a hit's score during the pistol team match in which his team placed fourth.



Even competition shooters pull butts.



The rifle team from BSSG "gets it together" at the 600-yard line for a come-from-behind winning effort.

BSSG rifle team takes Smith Trophy at matches

by SSgt. Dave Smith

The last round was fired, and the 1985 Pacific Division Matches ended Feb. 21 at the Camp Smith Training Facility's Puuloa Rifle and Pistol Range.

The three-week competition put some of the best Hawaii Marine marksmen on the firing line in a quest for gold, silver or bronze individual marksmanship medals, and gold team medals.

"You can lose it on the 200 and win it at the six" is a saying commonly heard from experienced shooters; and that was the way the rifle team match was decided.

The BSSG team came from behind to capture the perpetual Smith Trophy with a combined score of 1,081 and 40 Vs out of a possible 1,200 points. The team members were Capt. R.J. Barlow, 266-6; SSgt. R.A. Freetage, 276-12; Sgt. J.W. Elder, 273-10; and Cpl. G.T. Rucobo, 266-12. GySgt. L.C. Cheatham

coached the team to its victory.

The fierce competition of the morning's rifle shooting carried over to the pistol range that afternoon and the Camp Smith team put the high score on paper with a 947 and 11 Xs, out of 1,200 possible, to take the perpetual Pacific Trophy. Team members were Capt. D.H. Stenquist, 267-3; CWO-2 G.M. Matthews, 244-3; Sgt. R.A. Smith, 236-3 and Cpl. T.D. Bartlett, 200-2. SSgt. B.A. Wood was the team coach.

During the two days preceding the team events, the individual competition for both the rifle and pistol was held. It came down to the V count in determining the winner of the gold first-place rifle medal. 2ndLt. G.G. Raketty, from MAG-24, bettered his first day score of 275-13 with a 276-16, for a total of 551-23 and the gold. He outscored teammate Capt. R.J. Ponnath's 551-22.

The course of fire for the

rifle competition consists of 20 rounds offhand and 10 rounds sitting rapid fire from the 200 yard line; 10 rounds prone rapid fire at the 300; and 20 rounds prone slow fire at the 600.

In the individual pistol match, SSgt. S.D. Strebel III, from 3/3, handily won the gold. After posting a first day score of 262-4, he blazed past the other contenders with a second day score of 272-2 for a 533-6 aggregate, — 16 points ahead of the second-place finisher.

The course of fire for the pistol is 10 rounds slow fire from 50 yards; 10 rounds timed fire from 25 yards fired in two, 20-second strings of five rounds each; and 10 rounds rapid fire from 25 yards, fired in two, 10-second strings of five rounds each.

Competitors in the individual matches also included three Hawaii National Guardsmen and seven civilians, but their placing did not affect the

medals available or given to Marines. The two guardsmen who did place second and fifth in the pistol match received silver awards for their efforts.

One quality routinely found in rifle and pistol shooters, and demanded of Marine competitors, is integrity. The actions of one shooter from 1/12, 1stLt. M.S. Toupin, drove that point home.

After firing the first time across the rifle course, Toupin realized that he had neglected having his trigger weighed, a requirement that must be fulfilled before any round can be fired for record.

Knowing that he would lose his first day's score, which had been high enough to place him in the potential medal winning bracket, he made his error known to the officials who had to disallow his score.

The standings for team and individual events, and the medals awarded, are:

Cont. on B-8



Loading for rapid fire



Sgt. Chubb, Jensen photo

Anticipating a wind value call from his coach, CWO-2 G.M. Matthews, from the Camp Smith team, is ready to turn the windage knob of his M-16A2 rifle.

Sports Shorts

Individual sports

Resumes are due at FMFPac for All-Marine hopefuls in Judo, March 1; Track and Field, April 16; Handball, April 19; Boxing, July 5; and Tennis, July 12. Participants should contact Jerry Price at the Athletic Office to start their paperwork as soon as possible.

Camp Smith racquetball

The Camp Smith Quarterly Racquetball Tournament will swing into action at the camp's racquetball courts, March 13. This double-elimination tournament is open to all active duty and retired servicemembers and civilian employees, with exchange privileges, at Camp Smith. The tournament will have five divisions: Men's Open, Seniors, Intermediate, Novice and Women's Open. Entry forms can be picked up at either the Camp Smith Special Services Office or the Fitness Center. Entry deadline is March 8. For more information call Hal at 477-5197.

Camp Smith Golf Tourney

The 1985 Camp Smith Golf Tournament will be March 20 at Leilehua Championship Golf Course. All active duty and retired servicemembers stationed at Camp Smith are eligible to enter. Camp Smith civilian employees with exchange privileges are also eligible. Entry deadline is March 14, and forms can be picked up at the Camp Smith Special Services Office or the Fitness Center. For more information call Hal at 477-5197.

Carole Kai Bed Race



Great Aloha Run

The Great Aloha Run, to be held Sunday at 6:30 a.m., is intended to be the largest footrace in the history of Hawaii. It offers runners a grand opportunity of entering the media spotlight, according to the race

committee. If you feel that your own style of running is special, or not so special, and would like to be interviewed, the race committee is looking for you. The entry form has space for you to note if you would like to be "a star." The 7½-mile Great Aloha Run, benefiting several local children's charities, includes military, wheelchair and racewalker divisions. There are also men's and women's divisions by age groups, as well as divisions for boys and girls.

All active duty military men and women stationed in Hawaii are eligible to compete in the Military Division, and trophies will be awarded to the first three male and female finishers. The remaining military entrants also will compete in their age divisions, with trophies in each division being given to the first three male and female finishers. Special trophies will be awarded to the military installation with the best participation in the Military Division, determined by the percentage of assigned personnel. In addition, special prizes and recognition will be given to the largest military unit running in formation.

The course of the Great Aloha Run is flat except for rolling hills in the last two miles. The route starts at the Aloha Tower, goes on Nimitz Highway to the Middle Street Interchange, continues under the H-1 Freeway past the airport, turns right on Valkenburgh St., left on Bougainville Road and left on Salt Lake Boulevard, continues to Castle Park, and finishes in the Lower Halawa Parking Lot at the Aloha Stadium. All finishers will receive a Great Aloha Run T-shirt. There also will be various prizes given at random to finishers who are at the entertainment and awards ceremony at the stadium following the run.

The race will kick off the Carole Kai Bed Race Festival, ending March 9 with the 12th Annual Bed Race and Parade in Waikiki. Trophies for the Great Aloha Run will be presented at the bed race.

The entry fee for the Great Aloha Run is tax deductible. Entry forms are available at the Station Gym.

Intramural Golf

Intramural golf now consists of seven monthly tournaments. The next date is March 15 and units are encouraged to

enter as many golfers as possible. Registration is from 9:45 a.m. to 12:30 p.m. at the Golf Course. Tee times will be from 10 a.m. to 2 p.m. There will be an organizational meeting noon March 7 in the Station Theater.

Softball

An organizational meeting for the 1985 intramural softball program is Wednesday at noon, in the Station Theater. Season starts April 6.

Varsity women's softball

Tryouts for the women's varsity softball program are in progress. All interested active duty women can call Coach "Butch" Poland at 488-7007 or attend the following practices: 10 a.m. to 1 p.m. Saturday at Pollack Field; 2 to 4 p.m. Sunday at Risely Annex, and 6:30 to 9 p.m. Wednesday at Camp Smith.

Marine Marathon video

Runners wanting to view a video production of the 1984 Marine Marathon can call SSgt. Douglas Laird, Training and Audio Visual Support Center, at 257-2637.

Racquetball

The novice division racquetball tournament will be Saturday and Sunday. The pretournament meeting will be Feb. 28, at 11:30 a.m. in Court 3. The intermediate division tournament will be March 9 and 10 with the pretournament meeting March 7 at 11:30 a.m. in Court 3. All active duty personnel interested in either tourna-

ment must preregister at the Station Gym. Winners will be eligible to participate in the HMAC competition in March.

Judo

Resumes for All-Marine judo are due to FMFPac by Friday. All active duty servicemembers who are interested should contact Jerry Price at 257-3550/3622.

Martial artist

Hawaii's top martial artists will demonstrate their skills and techniques during the Masters of the Martial Arts '85 exhibition, March 10, from 3:30 to 9 p.m. at Kekuhaupi'o Gymnasium on the campus of Kamehameha Schools. Tickets are \$4 at the door. Participants include the Universal Kempo Karate School Association, Wing Chung Do Hawaii, Self Awareness Institute of Hawaii, Kong's Sil Lum Pai Association, Hawaii Karate Yuban Sho Kai and Waianae Ju Jitsu/Karate Institute. There will also be exhibitions of body building posing from Physic World and performances by the Honolulu School for Gymnastics and Acrobatics. For more information, call 536-1015.

Rainbow Run

Active military servicemembers will have their own category this year in Hospice Rainbow Run '85, scheduled for March 10 at Keehi Lagoon. The 10K run has a 7 a.m. starting time, with runners going from the park through the airport industrial area, along Nimitz Highway, and back to the park. Entry fee is \$12 and includes a T-shirt, refreshments and individual race results. Participants can obtain at least \$12 in pledges

to use in place of the entry fee. Registration forms are available at running stores, sports shops, health clubs, or by calling St. Francis Hospital's Education Department at 547-6410.

Transportation to the tournament is the responsibility of the participant's parent command. In the case of retirees and reservists, transportation is the individual's responsibility. Billeting will be provided at the depot's BEQs/BOQs on a space available basis for retirees and reservists. For more information on the All-Marine Handball Tournament, contact Lt. Col. John Theisen, MCRD San Diego, at AUTOVON 957-4721 or (609) 225-4721; or Steve Taylor at AUTOVON 957-4611 or (609) 225-4611.

All-Marine handball tourney

The 1985 All-Marine Handball Tournament will be hosted by Marine Corps Recruit Depot, San Diego, May 6-10. The tournament, open to all Marines, features singles and doubles competition in two categories: Open, no age restriction; and Masters, 40 and older. A separate tournament will be conducted, on a trial basis, for retirees and reservists.



CHAMPUS?

* Full Obstetric & Gynecological Services
* Natural Childbirth
Rick F. Renwick, M.D. OB/GYN
Kailua Medical Arts 262-6961



FEBRUARY 24, 1985.

4	1	A Lady Like You	Glenn Campbell
2	2	Crazy For Your Love	Exile
3	3	My Baby's Got Good Timing	Dan Seals
7	4	You've Got A Good Love Comin'	Leo Greenwood
6	5	My Only Love	The Statler Brothers
8	6	What I Didn't Do	Steve Wariner
9	7	Crazy	Kenny Rogers
11	8	Walkin' A Broken Heart	Don Williams
1	9	Baby Bye Bye	Gary Morris
14	10	Seven Spanish Angels	Ray Charles & Willie Nelson

Hear the Top Country Songs in the Nation on the WEEKLY COUNTRY MUSIC COUNTDOWN SUNDAY MORNINGS at 9 A.M. on AM94 at KDEO Country Radio.

DO YOUR TAXES YOURSELF!

- Prepare your own tax return
- Maximize deductions
- Minimize your taxes
- Catch up on 1985 tax changes and requirements.

Only \$40 per person — Tax Deductible!

Workshop
Sat., March 2, 1985 9 a.m.-4 p.m.
Davies Pacific Center, Suite B-11
Call 524-5822 and register now!

Lowder & Associates

Free IRA seminar on how to reduce your IOU to the IRS.

- Zero Coupon Treasuries for IRAs
- PaineWebber's Alternatives for IRAs & IRA Rollovers

Join us at one of our free seminars.

Time:
Tuesday, March 5 6:30 P.M.
Thursday, March 14 6:30 P.M.
Thursday, March 28 6:30 P.M.
Thursday, April 11 6:30 P.M.

Place:
Kailua Recreation Center
21 S. Kaimalu Dr.

For reservations call Barbara Jennings at (908) 538-4311

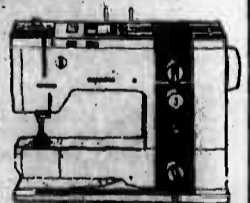
Thank you PaineWebber

733 Bishop Street, Suite 1500, Honolulu, HI 96813-3311

BERNINA OVERSTOCK SALE

HURRY, THIS INCREDIBLE SALE ... ENDS 3/3/85

SAVE \$500
TOP OF THE LINE
BERNINA #930
COMPLETE WITH
BONDED
WARRANTY



MODEL 930



SALE \$369
VARI LOCK
DECORATIVE
STITCHING
ZIG ZAG
MAKE
BUTTONHOLE
DEMO MODEL

BERNINA 802 SPORT

SEWING MACHINE
COUPON TUNE-UP SPECIAL
CLEAN OIL & ADJUST. 1875 Ends 3/7/85

PACIFIC SURPLUS & DISTRIBUTORS
262-8131 455-9010
1421 KAILUA RD. 90-93 KAM HWY
KAILUA PEARL CITY

NOW EVERY FRIDAY
"KUPUNA LUNCHEON"
12 Noon to 2 p.m.
at
Thalia's Bayview Restaurant

Kalanii Poomaihealani and his hula maidens presents a special leisure luncheon through songs and dances of Polynesia honoring all the "Kupunaa!"

4 Entrees to choose from:
Hawaiian Plate Mahimahi Shrimp Curry
Teriyaki Steak
for only \$6.95

Reservations for this Special Event Please!
Hawaiian Entertainment
with Audience Participation Encouraged.

Thalia's
Bayview Restaurant

Hours:
Breakfast: 7 a.m. - 11 a.m.
Lunch: 11 a.m. - 2:30 p.m.
Dinner:
5:30 p.m. - 10:00 p.m.
Bar: 7 a.m. - 2 a.m.

Entertainment 7 Nights a Week
247-2825

45-285 HANEON BAY DRIVE
We accept MasterCard and VISA



The hand prints on a building near the Youth Athletic Field were made a couple of days after it was painted.



Water fountain near the Youth Athletic Field was bent over after the recent three-day weekend.

Vandalism hurts everyone

by Sgt. Lorraine Brooks

The facilities at the Air Station may be protected from many things, but vandalism of athletic fields is not one of them, according to Robert Meheula, supervising gardener of the Special Services Athletic Maintenance Crew.

"Patrons of softball fields and the track should pay special attention to the signs posted. The signs are there to keep the areas in good condition," said Meheula. Meheula is particularly

concerned with the track at Pop Warner Field. Moped and bike riders ride on the track when it's wet. When the ground dries, it becomes hazardous to runners and looks bad, according to Meheula. "They should use a little bit of common sense and stay off the track when it's wet," said Meheula.

But the abuse and vandalism of the athletic fields doesn't stop there. Pollack Field has also been the site of thefts and litter. Base pads have been stolen, temporary fences have been

torn down and trash is all around.

At the Youth Athletic Field, vandalism continues. A couple of days after a storage building was painted, hand prints were found on the freshly painted walls. "One morning, I found a water

fountain bent all the way over," said Meheula.

By using common sense, and not doing anything in these areas that you wouldn't do at home, the fields will stay in good playing condition, according to Meheula.



Robert Meheula, of the Athletic Maintenance Crew, points to the ruts left on the Pop Warner Field track by mopeds and bicycles.

Neck Pain? Backache?
Don't Suffer Needlessly!

Pacific Chiropractic

TRAINED IN 5 RECOGNIZED TECHNIQUES INCLUDING "LOW FORCE"

COMPLETE PHYSICAL EXAM

X-RAY FACILITIES

COMMON SYMPTOMS:
• BACK PAIN
• HEADACHES
• NECK PAIN
• ARM & LEG PAIN
• JOINT PAIN
• MUSCLE SPASMS
• NUMBNESS
• PINCHED NERVES

SPECIALIZING IN:
• ON THE JOB INJURIES
• AUTO ACCIDENTS
• SPORTS INJURIES
• CHRONIC & DIFFICULT CASES
• GENERAL PRACTICE
• FAMILY CARE PLAN
• PERSONALIZED CARE

DR. JEANNE MICHAELS
R.N. DC.

602 KAILUA RD. NO. 207, KAILUA
(between Cornet & Hardware Hawaii-2nd floor rear)
NO CHARGE FOR BRIEF SPINAL ANALYSIS

261-0831

Pali Palms DENTAL GROUP
254-1541

CLIP & SAVE

**COMPLETE EXAM
X-RAYS &
TEETH CLEANING**

ONLY **\$19.00**
REGULARLY \$100.00

This certificate entitles our new patients to an initial examination and cleaning with all necessary X-rays for only \$19.00.

IMPORTANT! Offer Expires. All Calls for Appointments must be made by March 2, 1985. Actual Appointment can be later.

Each family may use only one coupon, however, the coupon you choose is good for all family members. This certificate will not apply to any DD6 62 or DentalGuard members.

CLIP & SAVE
Pali Palms Plaza

Castle Theatre Guild Presents

BELLS ARE RINGING

a cheerful, melodious musical hit

Directed by Ronald E. Bright

March 1, 2, 8, 9 - 8 P.M. • Matinee - March 3 - 2:00 P.M.

Tickets available at Sears, Windward Mall, Floyd's Music Shop, Kailua, Arakawas in Waiapahu, Harry's Music, Kaimuki, or at the Box Office prior to performance.

Oahu: Stores open week-nights until 9:00 p.m.

Saturday until 5:30 p.m.
Sunday until 5:00 p.m.

CAMPING

Coleman

Two-Burner Stove #425 Reg. 44.99 **35⁹⁷**

Coleman Fuel 1 Gal. Reg. 5.49 **4⁴⁷**

Double-Mantle Lantern #290/760 Reg. 44.99 **35⁹⁷**

Sierra Day Pack Reg. 32.00 **24⁹⁷**

16.4 Propane Fuel Reg. 3.99 **2⁹⁷**

10x13 Reg. 225.00 **169⁹⁹**

ATHLETICS

SPORT FUN Soccer Balls #4 & #5 Reg. 29.99 **19⁹⁹**

Wilson Leather Ball Gloves "PRO STAFF" #2050 Reg. 78.99 **59⁹⁹**

"Rgn Guildry" #2234 Reg. 49.99 **36⁹⁹**

"George Brett" Youth Reg. 19.99 **12⁹⁹**

SHOES

NIKE Lady "All Court" Shoes Reg. 24.99 **19⁹⁷**

Aerobic "Princess" Shoes Reg. 29.99 **17⁹⁷**

BROOKS "Liberty" Jogging Shoes Reg. 34.99 **27⁹⁷**

MIZUNO Dura-Cleat Multi-purpose Shoes Reg. 34.99 **27⁹⁷**

Challenger Golf Shoes Reg. 39.99 **29⁹⁷**

Spot-bilt "Spaceshot" Basketball Shoes Reg. 42.99 **27⁹⁹**

"White-Blast" Cleated Shoes Reg. 39.99 **24⁹⁹**

WATERSPORTS

One-Man Boat Reg. 17.99 **12⁹⁹**

Voit Wide Vision Mask Reg. 24.99 **19⁹⁷**

Kaual Mask Reg. 23.99 **18⁹⁹**

Big C/Little C Snorkel Reg. 10.99 **8⁹⁹**

PRE-INVENTORY SALE

- Load up with sports equipment for savings
- of 20% - 50%

SPORTSWEAR

Frank Shorter Running Shorts Reg. 16.00 **10⁹⁹**

California Beach-Front Shorts Reg. 12.99 **8⁹⁹**

WARM-UPS! Reg. 45.00-52.00 **29⁹⁷**

Musingwear Knit Shirts Reg. 23.00 **12⁴⁹**

PHYSICAL FITNESS

6 lb. pr. Chrome Dumbbells #CD30 I Reg. 22.00 **18⁹⁷**

10 lb. pr. Chrome Dumbbells #CD50 Reg. 28.99 **22⁹⁷**

PRO-MATE Flex Bar Reg. 15.99 **12⁹⁷**

weslo "Body Shop 360" Rower/Exerciser with Butterfly. Reg. 169.99 **129⁹⁹**

DP Dual-Action Exercise Bicycle Reg. 179.99 **129⁹⁷**

Vinyl Dumbbells 6 lb. pair Reg. 12.99 **9⁹⁷**

TENNIS

HEAD "Tournament Edge" Tennis Frame. Reg. 89.99 **71⁹⁷**

PRINCE "International" Tennis Racket. Reg. 90.00 **74⁹⁷**

DP "Power Pro" Tennis Racket. Reg. 79.99 **44⁹⁹**

BOBY BAR 2000 HOME GYM Reg. 399.99 **324⁹⁷**

Free-Stand Accessory Reg. 169.99 **149⁹⁷**

EVICTED!! MUST VACATE PREMISES

LIQUIDATION

FURNITURE FOR HOME • OFFICE • RESTAURANT
RENTALS • HOTELS • HAS BEEN ORDERED SOLD

the **LIQUIDATOR** 560 NORTH NIMITZ HWY.
(between Home Improvement Center and City Mill)

MARCH 1-8 • 10A.M.-7P.M. DAILY

Large quantity of chairs • tables • bar stools
bedroom, living room & dining room suites • bars
beds • headboards • desks • sofas • stack chairs

50%-70% OFF MARKET PRICE

love seats • lounge and reception room furniture
recliners • decorative items • chests of drawers
dressers • mirrors • lamps, and much, much more

"NO REASONABLE OFFER WILL BE REFUSED"

Terms: Cash, check, VISA, MASTERCARD—also a loan officer will be there to provide instant cash OAC. DEALERS ARE WELCOME.

AUCTION PUBLIC REGULAR INVENTORY, PLUS SELECT ITEMS

SAT. & SUN. MARCH 9 & 10 • 10 A.M.

ROSEN MEANS SAVINGS

For information on this or other sales, contact STEVEN ROSEN 637-2728

Auctioneers, Liquidators & Appraisers

• Windward Mall, 247-8733
• Kailua, 261-9751
• Pearlridge, 487-1517

HONSPORT

Division of Oshman's Sporting Goods

- Use your VISA, MasterCard, American Express
- Prices good thru March 5th

Island bus schedule changes announced

Marines requiring transportation on and off the Air Station have an economical mode of travel.

Established by the Air Station's commanding officer, the liberty bus is designed to provide free transportation for active duty personnel to and from Waikiki.

The liberty bus schedule is as follows:

Bus stop	Times		
Joint Reception Center	6 p.m.	8:10 p.m.	11 p.m.
Main Exchange	6:05 p.m.	8:15 p.m.	11:05 p.m.
Main Gate (ID check)	6:10 p.m.	8:20 p.m.	11:10 p.m.
Aikahi Park	6:15 p.m.	8:25 p.m.	11:25 p.m.
Kailua bus stop (Kailua & Hoolai Sts)	7 p.m.	9:10 p.m.	midnight
Kailua bus stop (Oneawa & Uluniu Sts)	7:35 p.m.	9:45 p.m.	12:35 a.m.
Aikahi Park	7:45 p.m.	9:55 p.m.	12:45 a.m.
Main Gate (ID check)	7:50 p.m.	10 p.m.	12:50 a.m.
Main Exchange	7:55 p.m.	10:05 p.m.	12:55 a.m.
Joint Reception Center	8 p.m.	10:15 p.m.	1 a.m.

Adverse weather or road conditions could cause a change to the schedule. In that event, Marines in Waikiki should contact the Military Police Station at Fort DeRussy for information.

What's cooking

Today

Lunch
Italian veal cutlets, BLT, turkey sandwich, soup, salad bar, dessert

Dinner
Stuffed green peppers, chicken fried beef patties, salad bar, dessert

Friday

Breakfast
Oven fried bacon, grilled ham slices, creamed beef, hash browns, eggs any style, cereal

Lunch
Barbecue beef, fishwich, grilled tuna and cheese, oyster stew, baked beans, salad bar, dessert

Dinner
Fish sticks, fried scallops, shrimp, vegetables, soup, salad bar, dessert

Saturday

Breakfast/brunch
Grilled Canadian bacon, oven baked sausage patties, hash browns, french toast, eggs any style, cereal

Dinner
Yankee pot roast, roast pork, gravy, mashed potatoes, vegetables, salad bar, dessert

Sunday

Breakfast/brunch
Hot cakes, creamed beef, hash browns, oven fried bacon, eggs any

style, cereal

Dinner
Rib roast, braised pork slices, vegetable combo, soup, salad bar, dessert

Monday

Breakfast
Grilled ham slices, grilled sausage patties, creamed beef, eggs any style, cereal

Lunch
Hot roast beef, grilled ham and cheese, french fries, soup, salad bar, dessert

Dinner
Swiss steak, veal cutlets, creamed corn, potatoes, soup, salad bar, dessert

Tuesday

Breakfast
Hot cakes, home fries, bacon, eggs any style, cereal

Lunch
Hot roast pork, Reuben sandwich, submarine sandwich, soup, salad bar, dessert

Dinner
Beef stew, braised liver with onions, mashed potatoes, soup, salad bar, dessert

Wednesday

Breakfast
French toast, hash browns, grilled sausage slices, eggs any style, cereal

Lunch
Roast beef sandwich, barbecue beef, french fries, soup, salad bar, dessert

Dinner
Braised beef short ribs, Newport fried chicken, blackeye peas, soup, salad bar, dessert

Last minute substitutions may become necessary. Check with the dining facility for more information.

Free tax information

Free income tax assistance is available to servicemembers and their families assigned here and at Camp Smith, according to Maj. M. Daniel, legal assistance officer and Volunteer Income Tax Assistance coordinator.

Individuals interested in free and confidential tax help should bring their tax packages, W-2 forms, interest statements from banks, credit unions, etc., and other pertinent documents to their unit representatives.

The following unit representatives can be contacted during normal working hours:

SOMS

Capt. J.W. James, 257-2348
Maj. J.C. Templeton, 257-3149
MSGt. K.L. Garner, 257-2973
MSGt. R.C. Coleman, 257-3212
EN3 S.K. McCallough
CWO N.E. Massal

H&HS

Sgt. S.B. Hedgecock, 257-2885
Cpl. E.A. Kaurakopf, 257-2068

H&MS-24

GySgt. T.A. Rodgers, 257-2484
SSgt. R.E. Crenshaw, 257-2513

MABS-24

GySgt. A.R. Burkart, 257-2512
GySgt. F.C. Goodwin, 257-3621

MACS-2

CWO-3 D.B. Sylvester, 257-3245
SSgt. W.K. Noble, 257-2280

HMM-265

1stLt. J.A. Kazin, 257-2489
1stLt. J.E. Donahue, 257-2489

HMM-165

1stLt. P.G. Hastings, 257-2777
MSGt. D.R. Snook, 257-3150
GySgt. R. Betts, 257-3533

VMFA-212

Capt. S.R. Hoenie, 257-3131
1stLt. D.L. Godfrey, 257-2024

VMFA-235

Capt. G.J. Vaughn, 257-2417
Sgt. W.A. Rouhal, 257-2417
HMM-364
1stLt. G.A. Sturdevant, 257-3450

HMM-463

1stLt. G.G. Reed, 257-2208
1stLt. J. Phillips, 257-2502

1stRadBn

1stLt. S.L. Hicks, 257-2848
1stLt. C.B. Schoenman, 257-2496
SSgt. I.C. Brown, 257-2652
SSgt. D.G. Nagy

BSSG

1stLt. J.P. Fischer, 257-3422
1stLt. G.W. Perkins, 257-2014
2ndLt. R.M. McGuinness, 257-3476
CWO-3 K.J. Murray, 257-3434
GySgt. V.P. Courmoye, 257-3476
MSGt. R.D. Leibforth

3d Marines

Cmdr. R.D. Erb, 257-3202

HqCo, 3d Marines

1stSgt. R.L. Mullen, 257-2993
1/3

1stLt. M.A. Killinger, 257-2673
SSgt. R.N. Thomas, 257-2997
3/3

SSgt. M.J. Davis, 257-3142
Sgt. M.D. Casey, 257-3142
1/12

1stLt. R.J. Haddick, 257-2507
1stLt. M.S. Toupin

3d AAV

2ndLt. S. Harris, 257-2711
Sgt. S. Toistic, 257-2711

CommSptCo

Sgt. K.E. Boehm, 257-3609
HqCo, Bde

Maj. J.R. Turner, 257-3340
HMC D.W. Stagemeyer, 257-2812

3d ReconBn

Cpl. K.D. Ball, 257-3160
Camp H.M. Smith
Sgt. R.A. Kirby, 477-6331

ROLLS, RUGS, REMNANTS

\$85.00 DOWN

Carpet your home and \$21⁹⁵ per month O.A.C.*

DuPont Nylon Plush Pile Carpet, 3/8" Foam Cushion and Installation

*BASED ON 48.6% S/Y CARPET, CUSHION, AND INSTALLATION
30 PAYMENTS 21⁹⁵ TOTAL 658⁰⁰ A P R 26%

HOURS
M-F 9:00-5:00
SAT 9:00-4:00
SUN 1:00-4:00

Bill Bohart's

CORNER

834-1456

970 Ahua Street (across from Gibsons)

Our Many Happy Carpet Customers. We Say... "Thank You!"

LOW COST AUTO INSURANCE

528-1620

ARCHER-REID ENTERPRISES
1221 KAPIOLANI BLVD., #808
Multiple Company Insurance Agents

ACCIDENT CASES

INCLUDING
WRONGFUL
DEATH CLAIMS
AND
CATASTROPHIC INJURIES

You may qualify if you or any member of your family has been injured.

524-5400

Law Offices of
GARY GALIHER & ASSOCIATES

No Charge For Initial Consultation
No Recovery - No Fee

333 Queen Street, Suite 800 Validated Parking

GENERAL ELECTRIC

Factory Service

WE OFFER THESE SERVICES

- Scheduled Service Mon.-Sat.
- Emergency Service
- Service Contracts
- Step-by-Step Repair Manuals/Parts

- Factory Trained Technicians
- Refrigerator/Freezer
- Washer/Dryer
- Dishwasher/Disposal
- Compressor
- T.V.
- Room Air Conditioning

CALL TODAY — WE FIX IT RIGHT — THE FIRST TIME

333-7982
333-7482

406 Cooke St.

Come up to KOOL

Kool gives you extra coolness for the most refreshing sensation in smoking.

A sensation beyond the ordinary.

Special Services

Dependent Recreation

254-2963

Youth baseball/softball

Registration will continue for youth baseball/softball through March 31 at Dependent Recreation between 1 and 4:30 p.m.

Library

The Station Library has a children's section and children's story hour on Saturdays at 11 a.m., in Building 219.

For more information call 257-3583.

Selfdefense

A free demonstration workshop will be held in selfdefense March 7 at 7:30 p.m., and March 9 at 10 a.m., at Dependent Recreation. If there is sufficient

interest, a 10-week course will be offered, and will cover practical uses of selfdefense, such as breakaway techniques, escape methods and counter attacks. Cost is \$25.

Junior golf

Registration for the next session of junior golf will be Monday at 3:30 p.m. at the Golf Course. Play will start March 11 at 3:30 p.m. and continue through May.

Hawaiian quilting

A class will be starting Wednesday at 6:30 p.m., or March 8, at 9 a.m. in Dependent Recreation.

A six-week course is \$15. Students provide materials. Registration deadline is Monday.

Swimming lessons

Registration for the next swimming lessons will be

March 9 at 2 p.m., at the Station Pool. Each session will be 10 lessons, Tuesday through Friday, from 3 to 5 p.m. Sessions start March 12 through March 27.

Registration for the next session is March 30 at 2 p.m. at the Station Pool. Cost for a 10-lesson session is \$25.

Hula

An eight-week hula session for children will begin March 13 at 3 p.m., and for adults on March 14 at 9:30 a.m., or March 18 at 7 p.m. Cost is \$25.

Deadline for registration is March 11.

Smocking

Learn how to make children's clothes and muumuus with the art of smocking. A three-week course will begin March 18 at 7:30 p.m. in Dependent Recreation. Cost is \$20.

Materials are supplied, and deadline to register is March 13 at Dependent Recreation.

Fresh flower lei

Learn to make the five styles of leis at a fresh lei making class, March 22 from 9:30 a.m. to 2 p.m. at Dependent Recreation.

Fresh flowers and ferns are supplied. Cost is \$15. Deadline for registration is March 20.

Jazzercise

A jazzercise class will be held Tuesdays and Thursdays at 9 p.m.

Drop-in Center

If you have shopping or other commitments, the Nakeiki Drop-In Center, in Building 1391, can be your answer. A professional staff takes excellent care of your child in a stimulating environment.

Call 254-3249 for more information and reservations.

arts, gymnastics and dance, call Jan or Diane, Monday through Friday, 8 a.m., to 6 p.m. at 254-2963.

Animal care

The Zoonosis Clinic, located in Building 455, can help you with information and services for your pet.

For more information call 257-3643.

Saturday, the Child Care Center, located in Building 579, is available.

The professional staff there takes excellent care of your child in a stimulating environment.

Call 257-2608 for more information.



Child Care Center

If you are planning a Friday or Saturday evening out, or need child care on

Religious services

MCAS Kaneohe Bay

257-3552/3506

Weekdays

11:45 a.m. — Catholic Mass

Saturday

6 p.m. — Catholic Mass

7 p.m. — Catholic Reconciliations

Sunday

7:30 a.m. — Catholic Mass

8:30 a.m. — Protestant Liturgical Communion

9:30 a.m. — Catholic Mass

9:30 a.m. — Protestant Sunday School

10:45 a.m. — Catholic CCD Classes

11 a.m. — Protestant Worship

1 p.m. — Samoan Congregation

The Station Chapel is located in the right rear corner of the Marine Corps Exchange, building 1090. Sunday School and CCD are held in the pre-school area, building 1391.

Camp H.M. Smith

477-5098

Sunday

8 a.m. — Catholic Mass

9:30 a.m. — Protestant Worship

9:30 a.m. — Protestant Sunday School

Monday

11:30 a.m. — Bible Study

Wednesday

6:45 a.m. — Prayer breakfast

Naval Station Pearl Harbor

471-3971

Weekdays

11:30 a.m. — Daily Catholic Mass

Saturday

6 p.m. — Catholic Mass

Sunday

7:30 and 9:30 a.m. — Catholic Mass

8:30 a.m. — Protestant Communion Service

9:30 a.m. — Protestant Sunday School

11 a.m. — Protestant Worship Service

7 p.m. — Protestant Gospel Service

Holidays

11:30 a.m. and 5 p.m. — Catholic Mass

Aloha Jewish Chapel, Pearl Harbor

471-0050

Friday

8 p.m. — Shabat

Saturday

9:30 a.m. — Shabat and Torah Study

Sunday

9 a.m. to noon — Religious School

Dried flower arrangements

Make a haku lei for your head or hat from beautiful dried and silk flowers. A class will be held March 20 at the Station Library at 6:30 p.m. Cost is \$14. Deadline is March 18 at Dependent Recreation.

Prenatal exercise

A prenatal exercise class is held Tuesdays and Thursdays from 7 to 8 p.m. in the dance room. Cost is \$16 per month.

For more information on these programs and ongoing classes in exercise, martial

Movie schedule

Movies start daily at 7:15 p.m. For more information call the Station Theater at 257-3668.

Tonight and Friday

A Red Dawn — PG. Action/drama. Patrick Swayze. A small town is taken by surprise by invading communist paratroopers. Grabbing food and weapons, a band of teenagers manage to go to the mountains and organize an awesome defensive unit.

Saturday and Sunday

All of Me — PG. Comedy. Steve Martin and Lily Tomlin. As if living wasn't bad enough, heiress Edwina

Cutwater can't seem to even die right; at least not without the help of her lawyer, Roger Cobby, half of whose body she uses.

Monday

To be announced

Tuesday and Wednesday

The Return of the Chinese Boxer — PG. Action/drama. Jimmy Wong. The time is the Ching Dynasty, the place in China. Japanese send Samurai and Ninja forces to the mainland in an effort to defeat the deadly Lady Feng and overthrow the Chinese monarchy.

LAW OFFICES OF JOSEPH KINOSHITA & ASSOC.

EXPERTS IN

- BUSINESS LAW
- FAMILY LAW
- PERSONAL INJURY
- REAL ESTATE

Initial Consultation FREE For Accident Cases

820 Milliani St.

98-211 Pali Momi St. Suite 615

523-5060/488-5055

KAPIOLANI 1648 Kapiolani 955-5115
TONIGHT: 6:30-8:30-10:30 SAT. & SUN. - 12:30 CONT.
MOVES OVER TO KAM 1 FRIDAY

HE IS THE OVERLORD OF STRANGE BEASTS AND STOLEN SOULS...

the DUNGEONMASTER

"What a drag to get home in this traffic!"

"Forget the traffic. Let's stop for dinner at the BOULEVARD HOUSE!"



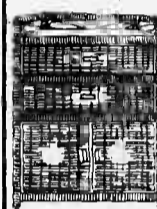
5 Hoola Street
 Kahauna, Hawaii
 262-2306

S.C. VIZCARRA

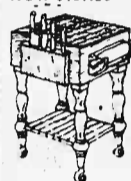
RATTAN & BURI FURNITURE AND HOME ACCESSORIES
 EVERYTHING IS ON SALE SAVING UP TO 20%, 30%, 40% OFF
 WE HAVE TWO LOCATIONS -

404 PIKOI ST.
 533-4924

KEMOO FARM STORE
 621-3030



WICKER DRESSER
 W/DOOR REG \$225.00
 NOW \$157.50



BATHROOM SHELF
 REG \$24.00
 NOW \$19.20



BLOCK BUTCHER
 REG \$130.00
 NOW \$95.00



BASKET ASSORTED SHAPES

ALL 40% OFF FROM REG PRICE



BURI HAMPER ASSORTED SHAPES
 20% OFF FROM REG. PRICE \$10.00 TO \$18.00
 NOW \$8.00-\$14.40

SALE STARTS FEB. 25 TIL MARCH 2, 1985

WE ACCEPT ALL MAJOR CREDIT CARDS VISA, MASTERCARD, AMERICAN EXPRESS

Pali Palms DENTAL GROUP

254-1541

COMPLETE EXAM X-RAYS & TEETH CLEANING

This certificate entitles "our" new patients to an initial examination and cleaning with all necessary X-rays for only \$19.00.

IMPORTANT! Offer Expires. All Calls for Appointments must be made by March 2, 1985. Actual Appointment can be later.

Each family may use only one coupon, however, the coupon you choose is good for all family members. This certificate will not apply to any DDS-82 or DentisGuard members.

ONLY \$19.00

REGULARLY \$100.00

CLIP & SAVE Pali Palms Plaza

Next to Yum Yum Ice - 970 N. Kalaniana'olani Ave. - 1st Floor - Across From Aloha Shp. Ctr.

NURSES

YOUR SKILLS ARE NEEDED

We are actively recruiting experienced RNs, LPNs and Nursing Assistants. You choose when and where you will work. Your work is always appreciated!

We provide:

- FULL BENEFITS
- COMPETITIVE SALARY PAID WEEKLY
- FULL-TIME OR PART-TIME WORK, YOU CHOOSE!

Kahu Malama Nurses, Inc., services hospitals, private patients, nursing homes, offices and clinics. We're proud of our organization and the people who work for us. Call for a confidential interview.

526-3761

Kahu Malama Nurses, Inc.

680 Ala Moana Blvd., Suite 412
 Honolulu, Hawaii 96813
 Phone 526-3761

See our yellow pages ad under Nurses.

Cont. from B-1

Team rifle competition

Winners — BSSG 'Gold' Team, 1081-40V

- Capt. R.J. Barlow, 266-6V
- SSgt. R.A. Freetage, 278-12V
- Sgt. J.W. Elder, 273-10V
- Cpl. G.T. Rucobo, 266-12V
- CySgt. L.C. Cheatham, coach

2nd Place — 3/3, 1073-33V

- 1stLt. S.M. Heft, 271-10V
- SSgt. S.D. Strelbel III, 270-8V
- Sgt. K.A. Hester, 272-9V
- 1Cpl. R.J. Johnson, 260-8V
- SSgt. A.R. Square, coach

3rd Place — Marine Barracks, 1056-24V

- Capt. C.U. Mulholland, 271-7V
- SSgt. G. Santos, 253-6V
- Cpl. R.J. Triplett, 271-7V
- 1Cpl. M.A. Blackson, 261-4V
- Cpl. J.D. Roe, coach

4th Place — 1st Marine Brigade Team #1, 1055-34V

- Maj. R.S. Whitehead, 239-4V
- SSgt. A. Pasillas, 273-11V, coach
- Cpl. S.J. Dooley, 283-15V
- Cpl. S.E. Evans, 260-4V

5th Place — Camp Smith Team #1, 1052-28V

- CWO2 G.M. Matthews, 269-12V
- Sgt. R.A. Smith, 273-10V
- Cpl. T.D. Bartlett, 258-2V
- 1Cpl. T.A. Holmes, 252-4V
- SSgt. G.A. Cuellar, coach

6th Place — Camp Smith Team #2, 1050-29V

- Capt. D.H. Stenquist, 269-10V
- SSgt. B.A. Wood, 269-7V
- Cpl. J.F. Stankey, 263-6V

- 1Cpl. G.R. Diaz, 249-6V
- Cpl. D.M. Rice, coach

7th Place — MAG-24, 1034-29V

- Capt. R.J. Ponnath, 269-10V
- 1stLt. G.G. Ruketty, 249-7V
- SSgt. D.C. Colbert, 268-7V
- Cpl. C.N. Ikeda, 248-5V
- GySgt. R.S. Saldivar, coach

8th Place — MCAS Kaneohe Bay, 1031-29V

- Capt. S.R. Clark, 271-8V, coach
- SSgt. M. Robinson, 249-4V
- SSgt. R.P. Tryling, 240-3V
- Sgt. G.D. Stacey, 271-14V

9th Place — BSSG 'Scarlet' Team, 1024-35V

- 2ndLt. D.L. Hibbs, 266-9V
- Cpl. K.A. Stults, 262-9V
- Cpl. J.J. Reinitz, 258-8V
- Cpl. M.S. Ross, 238-9V
- Sgt. J.S. Freniere, coach

10th Place — 1st Radio Bn, 1021-32V

- 1stLt. R.L. Buss, 269-9V
- SSgt. J.R. Efferen, 242-7V
- Sgt. R.A. Reese, 249-8V, coach
- 1Cpl. J.C. Poole, 261-8V

11th Place — 1/12, 1019-22V

- 1stLt. M.S. Toupin, 264-5V
- GySgt. J.A. Garcia, 253-10V, coach
- SSgt. G. Torres, 255-6V
- 1Cpl. D.E. Lambird, 247-2V

Team pistol competition

Winners — Camp Smith, 947-11X

- Capt. D.H. Stenquist, 267-3X
- CWO2 G.M. Matthews, 243-3X
- Sgt. R.A. Smith, 236-3X
- Cpl. T.D. Bartlett, 200-2X
- SSgt. B.A. Wood, coach

2nd Place — MAG-24, 937-10X

- Capt. R.J. Ponnath, 227-0X
- SSgt. D.C. Colbert, 259-3X
- Cpl. G.N. Ikeda, 202-0X
- Cpl. S.A. Parkett, 249-7X
- GySgt. R.S. Saldivar, coach

3rd Place — Marine Barracks, 933-3X

- Capt. C.U. Mulholland, 236-2X
- SSgt. G. Santos, 213-0X
- Cpl. R.J. Triplett, 229-0X
- 1Cpl. M.A. Blackson, 255-1X
- Cpl. J.D. Roe, coach

4th Place — BSSG Team #1, 908-7X

- Capt. R.J. Barlow, 246-1X
- GySgt. L.S. Cheatham, 180-0X
- SSgt. R.A. Freetage, 253-4X, coach
- Sgt. J.W. Elder, 229-2X

5th Place — MCAS Kaneohe Bay, 894-7X

- Capt. S.R. Clark, 243-3X
- SSgt. M. Robinson, 232-1X, coach
- SSgt. R.P. Tryling, 219-1X
- Sgt. G.D. Stacey, 199-2X

6th Place — 1st Marine Brigade, 865-10X

- Maj. R.S. Whitehead, 240-2X
- SSgt. A. Pasillas, 262-6X, coach
- Cpl. S.J. Dooley, 183-1X
- Cpl. S.E. Evans, 180-1X

7th Place — BSSG Team #2, 843-9X

- 2ndLt. D.L. Hibbs, 223-4X
- Sgt. J.S. Freniere, 208-2X, coach
- Sgt. K.A. Stults, 214-1X
- Cpl. G.T. Rucobo, 201-2X

8th Place — 1/12, 825-9X

- 1stLt. M.S. Toupin, 212-2X
- GySgt. J.A. Garcia, 243-2X, coach
- SSgt. G. Torres, 204-2X
- 1Cpl. D.E. Lambird, 166-3X

Cont. on B-8

Plant sale highlights activity

The American Cancer Society's fourth annual World's Greatest Garage and Plant Sale will be at Neal Elaisdell Center's Exhibition Hall, Friday, Saturday and Sunday.

If you've ever wanted a piano or a platinum ring, a sewing machine or scuba diving equipment, or a personal computer or a rock polisher, now's your chance.

These, and hundreds of other donations of furniture, household appliances, toys, sports equipment, antiques, collectibles, books and baby clothes will be offered at bargain prices by the three Oahu units of the American Cancer Society.

Beginning at 4:30 p.m. Sunday, an auction of fine items will be conducted in the Pikea Room with all proceeds going to the American Cancer Society. Among the art, antiques, jewelry and other collectibles up for auction are a double strand of pearls with a two-carat diamond clasp, a collection of porcelain birds, antique luggage, a camphor chest and a Kimball organ.

The Oahu Nursery Growers Association will conduct an expanded plant sale this year featuring an outstanding assortment of plants and shrubs to enhance both the interior and exterior landscaping of your home. Several demonstrations will be offered in the proper care of plants. Some 60 vendors offering merchandise, ranging from baskets to boutique items will also contribute to the marketplace of value.

Highlighting the sale will be continuous entertainment including performances by the American Theater Organ Society and video showings. Opening night will feature Pazazz, a top-40 hit band and comedy act; the Silverose fashion show featuring fashions from the 1920's to the 80's and dances from each era; and a dance troupe.

Popular comedian Frank DeLima will perform Saturday, along with Collette and Score, the John Keola Lake and Hui O Na Pio; and the One Ring Circus, a group of jugglers and clowns.






The J&L Country Band, Iwalandi School of Dances and Simplicity will be among the groups performing Sunday.

Sale hours are 4 to 10 p.m. Friday; 10 a.m. to 8 p.m. Saturday; and 10 a.m. to 4 p.m. Sunday, with the auction beginning at 4:30 p.m.

Proceeds from this event will help support cancer research, services to local cancer patients and their families, and public education on early detection and prevention of cancer.

For more information call the American Cancer Society at 531-1002.

257-2657/2873 ENLISTED CLUB MARCH 1985

SUNDAY	MONDAY	TUESDAY	WEDNESDAY	THURSDAY	FRIDAY	SATURDAY
SOUL DISCO WITH GUEST D.J. MR. J. ROCK EVERY SUNDAY 2030-0030	D.J. NIGHTLY IN THE MOONGATE & MAIN BALLROOM			MAHI MAHI, BROCCOLI, POTATOES SOUP & SALAD BAR EVERY FRIDAY JUST \$5.95 5-9 PM	SIGNAL (BAND) 2100-0100	
BBQ RIBS WITH CORN ON THE COB, HOME FRIED POTATOES, BISCUITS, SOUP & SALAD BAR \$4.50 5-9 PM	BEEF BURRITO, TACOS, RICE, REFRIED BEANS, CHIPS & SALSA SOUP & SALAD BAR JUST \$5.75 5-9 PM PLUS KEY WILLIE 7:30-11:30 PM	 SWEET N SOUR PORK, FRIED RICE, EGG ROLLS, SOUP & SALAD BAR, BEVERAGE JUST \$4.95	ROAST BEEF, AU JUS, MASHED POTATOES, BUTTERED CARROTS, SOUP & SALAD BAR, BEVERAGE JUST \$4.95 5-9 PM	BAKED CHICKEN IN WINE SAUCE, GREEN BEANS, MASHED POTATOES, CORN BREAD, SOUP & SALAD BAR, BEVERAGE JUST \$5.25 5-9 PM	THE GIRL NEXT DOOR (BAND) 2100-0100	
St. Patrick's Day	BOSSSES NITE JOHNNY PANIC & HIS DANCING TROUPE 1800-2200	EVERY TUESDAY 5-9 PM	SALAD BAR, BEVERAGE JUST \$4.95 5-9 PM	SALAD BAR, BEVERAGE JUST \$5.25 5-9 PM	FRANKIES FINEST (BAND) 2100-0100	BEEF SHISH KA BOB, RICE PILAFF, ZUCCHINI, SOUP & SALAD BAR, EVERY SATURDAY 5-9 PM
SOUL DISCO WITH GUEST D.J. MR. J. ROCK 2030-0030	KEY WILLIE (BAND) 1930-2330				RUNWILD (BAND) 2100-0100	RUNWILD (BAND) 2100-0100

257-2945/2592 SNCO CLUB MARCH 1985

SUNDAY	MONDAY	TUESDAY	WEDNESDAY	THURSDAY	FRIDAY	SATURDAY
SUNDAY BRUNCH ADULTS \$4.50 KIDS \$2.50 9:30-12:00 FEATURING OMELETS, SCRAMBLED EGGS, TOAST, MUFFINS, TEXAS STYLE FRENCH TOAST, S.O.S., HAM, BACON, SALISAGE, FRUIT BOWL, HOME FRIES, HASH BROWNS, CREPE, JUICE, COFFEE, TEA, & CHAMPAGNE	 NEED INFORMATION ABOUT PRIVATE PARTIES OR SPECIAL EVENTS? CALL US 257-2945/2592	LUNCH SPECIAL GROUND ROUND STEAK 11-1 PM EVERY TUESDAY	SNCO ADVISORY BOARD MEETING 3:00 PM	LUNCH SPECIAL BAKED LASAGNA EVERY THURSDAY 11-1 PM	LUNCH SPECIAL SAUTEED MAHI MAHI EVERY FRIDAY	KITTY WELLS SHOWTIME 8:30-10:30
	SNCO WIVES CLUB MEETING	"BINGO" CLUB MEMBERS ONLY 6:30 PM EVERY TUESDAY	LUNCH SPECIAL BEEF KABOB 11-1 PM EVERY WEDNESDAY	MONGOLIAN BBQ 5-8 PM .35 PER OUNCE EVERY THURSDAY	 SEA FOOD DELIGHT NIGHT ADULTS \$8.95 KIDS \$4.50 BEEF, SHRIMP, CRAB & FISH MARKET EVERY FRIDAY	DINING ROOM CLOSED EVERY SATURDAY EXCEPT FOR SPECIAL EVENTS
St. Patrick's Day	HOT CHILI & SNACKS ARE SOLD AT THE BAR NIGHTLY	 CARVED BEEF WITH FIXINGS & SALAD BAR ADULTS \$4.75 KIDS \$2.50 EVERY TUESDAY 5-9 PM	TOP SIRLOIN STEAK & OPEN MENU DINING 5-8 PM EVERY WEDNESDAY			DINING ROOM CLOSED

Rifle matches

Cont. from B-7

Individual pistol competition

- 1st Gold - SSgt. S.D. Strelbel III, 3/3, 262-4/271-2/633-6
- Silver Award - SSgt. S.P. Young, Hawaii NG, 260-2/257-4/517-6
- 1st Silver - LCpl. M.A. Blackson, MarBks, 249-4/263-5/512-9
- 2nd Silver - Capt. R.J. Ponnath, MAG-24, 262-4/249-2/511-6
- Silver Award - Maj. T.G. Mendonca, Hawaii NG, 252-4/255-3/507-7
- 3rd Silver - Cpl. S.A. Pickett, MAG-24, 252-6/252-3/504-9
- 1st Bronze - Sgt. J.W. Elder, MSSG-37, 260-5/242-1/502-6
- 2nd Bronze - Sgt. R.A. Smith, Camp Smith, 256-2/245-4/501-6
- 3rd Bronze - SSgt. A. Pasillas, 1stMarBde, 246-2/249-4/495-5
- 4th Bronze - Capt. C.U. Mulholland, MarBks, 254-4/240-1/494-5
- End of awards
- 11th - Capt. D.H. Stenquist, Camp Smith, 249-4/241-1/492-5
- 12th - Cpl. R.E. Swearingin III, 1stMarBde, 241-3/247-4/488-7
- 13th - Capt. S.R. Clark, H&HS, 245-3/241-2/486-5
- 14th - 1stLt. R.L. Buss, 1stRadBn, 253-3/232-2/485-5
- 15th - Cpl. R.D. Triplett, MarBks, 254-2/231-2/484-4
- 16th - SSgt. D.C. Colbert, MAG-24, 249-2/235-0/484-2
- 17th - CWO2 G.M. Matthews, Camp Smith, 245-4/236-2/481-6
- 18th - Capt. R.L. Antl (Ret.), Jacksonville, N.C., 242-3/238-3/480-6
- 19th - 2ndLt. G.G. Raketty, MAG-24, 239-0/240-4/479-4
- 20th - SSgt. R.A. Freetage, BSSG, 256-0/232-4/478-4
- 21st - SSgt. B.A. Wood, Camp Smith, 239-1/239-3/478-4
- 22nd - Cpl. J.D. Roe, MarBks, 236-0/238-1/474-1
- 23rd - Sgt. W.E. Shewmake, 1stMarBde, 241-1/232-1/473-2
- 24th - LCpl. J.C. Pools, 1stRadBn, 225-0/246-3/471-3
- 25th - SSgt. R.P. Tryling, MCAS, 232-1/238-2/470-3
- 26th - SSgt. A.R. Square, 3/3, 233-1/232-3/465-4
- 27th - LCpl. M.F. Langham, MarBks, 218-0/232-2/460-2
- 28th - 1stLt. M.S. Toupin, 1/12, 246-2/212-3/458-5
- 29th - SSgt. M. Robinson, MCAS, 224-1/234-2/458-3
- 30th - SSgt. G. Santos, MarBks, 227-2/228-0/455-5
- 31st - Capt. R.J. Barlo, BSSG, 228-2/227-2/455-4
- 32nd - Cpl. A.L. Horton, MarBks, 211-2/235-1/446-3
- 33rd - T.A. Ortogero, civilian, 203-0/242-1/445-1
- 34th - GySgt. L.S. Cheatham, BSSG, 234-2/210-3/444-5
- 35th - Maj. R.S. Whitehead, 1stMarBde, 228-0/212-0/440-0
- 36th - GySgt. R.S. Saldivar, MAG-24, 209-1/222-0/431-1
- 37th - SSgt. G.A. Cuellar, Camp Smith, 202-0/204-1/429-3
- 38th - Sgt. R.A. Reese, 1stRadBn, 230-0/193-1/425-1
- 39th - Cpl. T.D. Bartlett, Camp Smith, 201-0/220-2/421-2
- 40th - Cpl. J.F. Stankey, Camp Smith, 218-2/196-2/414-4
- 41st - LCpl. T.A. Holmes, Camp Smith, 197-1/217-3/414-4
- 42nd - G.A. Vlasak, civilian, 194-0/219-1/413-1
- 43rd - GySgt. J.A. Garcia, 1/12, 225-0/186-0/411-0
- 44th - LCpl. E.L. Willie, MarBks, 206-1/204-1/410-2
- 45th - 2ndLt. D.L. Hibbs, BSSG, 195-2/206-2/401-4
- 46th - Cpl. G.N. Ikeda, MAG-24, 210-3/187-0/397-3
- 47th - LCpl. H.X. Montaigne, MarBks, 188-0/209-1/397-1
- 48th - Cpl. S.E. Evans, 1stMarBde, 210-1/187-0/397-1
- 49th - Sgt. G.D. Stacey, MCAS, 202-0/195-0/397-0
- 50th - SSgt. G. Torres, 1/12, 198-2/198-0/396-2
- 51st - Sgt. K.A. Stulta, BSSG, 220-2/173-2/393-4
- 52nd - 1stLt. S.M. Heft, 3/3, 214-2/174-0/388-2
- 53rd - LCpl. R.E. Reetz, Camp Smith, 187-1/195-1/382-2
- 54th - Sgt. K.A. Heister, 3/3, 163-1/215-2/378-3
- 55th - LCpl. R.J. Dronogowski, MarBks, 172-1/202-2/374-3
- 56th - Cpl. D.M. Rice, Camp Smith, 175-2/197-0/372-2
- 57th - Cpl. J.A. Ruscum, MarBks, 184-1/187-2/371-3
- 58th - Cpl. G.T. Rucobo, BSSG, 162-0/205-2/367-2
- 59th - SSgt. J.S. Murphy, MAG-24, 199-1/167-0/366-1
- 60th - 1stLt. A. Holzmeier, Camp Smith, 159-0/206-1/365-1
- 61st - Sgt. J.E. Friere, BSSG, 172-0/188-0/360-0
- 62nd - LCpl. R.J. Johnson, 3/3, 149-0/212-2/341-2
- 63rd - LCpl. T.N. Dorsey, BSSG, 149-0/191-1/340-1
- 64th - Cpl. C.A. White, 3/3, 130-0/206-0/336-0
- 65th - LCpl. M.P. Tagle, MarBks, 138-0/189-1/327-1
- 66th - Sgt. E.J. Pritchard, Camp Smith, 162-0/162-0/324-0
- 67th - LCpl. G.R. Diaz, Camp Smith, 138-3/184-0/322-3
- 68th - LCpl. D.E. Lambird, 1/12, 152-2/165-0/317-1
- 69th - SSgt. J.R. Efferson, 1stRadBn, 140-0/172-0/312-0
- 70th - Cpl. J.J. Reinitz, BSSG, 146-1/167-1/312-2
- 71st - GySgt. A.S. Ignacio, Camp Smith, 169-0/143-1/312-1
- 72nd - 2ndLt. R.M. McGuiness, BSSG, 118-0/175-0/293-0
- 73rd - PFC R.J. Smith, MarBks, 117-0/167-2/284-2
- 74th - Cpl. S.J. Dooley, 1stMarBde, 160-1/116-1/276-2
- 75th - LCpl. M.S. Stacy, Camp Smith, 152-1/111-0/263-1
- 76th - Sgt. P. Yunker, Camp Smith, 109-1/150-0/259-1
- 77th - GySgt. R.R. Brenes, Camp Smith, 139-0/118-0/257-0
- 78th - LCpl. B.A. John, BSSG, 90-0/165-1/255-1
- 79th - LCpl. W.H. Mohr, MarBks, 122-0/130-0/252-0
- 80th - LCpl. B.E. Young, Camp Smith, 123-0/114-0/237-0
- 81st - Cpl. K.T. McDaniel, Camp Smith, 120-2/98-0/214-4
- 82nd - Cpl. M.S. Ross, BSSG, 96-0/116-0/212-0
- 83rd - LCpl. J. Nunez, Camp Smith, 92-0/84-0/176-0
- 84th - LCpl. M.D. Daniel, BSSG, 45-0/106-0/151-0
- 85th - LCpl. H.L. Firestone, MAG-24, 84-0/42-0/126-0



Sgt. Chuck Lamb photo

- 3rd Silver - Sgt. K.A. Heister, 3rd Mar, 278-8/271-13/549-21
- 1st Bronze - Capt. S.R. Clark, H&HS, 274-14/274-9/548-23
- 2nd Bronze - Capt. D.H. Stenquist, Camp Smith, 265-9/282-12/547-21
- 3rd Bronze - Sgt. W.E. Shewmake, 3rd Mar, 274-11/272-10/546-21
- 4th Bronze - SSgt. S.D. Strelbel III, 3rd Mar, 280-14/266-5/546-19
- End of awards
- 9th - SSgt. B.A. Wood, Camp Smith, 271-8/270-10/546-18
- 10th - Capt. R.J. Barlow, BSSG, 281-14/262-7/543-21
- 11th - Cpl. J.F. Stankey, Camp Smith, 272-14/270-7/542-21
- 12th - Sgt. J.W. Elder, BSSG, 273-13/269-8/542-21
- 13th - Cpl. R.E. Swearingin III, 1stMarBde, 269-10/273-8/542-18
- 14th - CWO2 G.M. Matthews (Distinguished), Camp Smith, 271-8/269-6/540-14
- 15th - LCpl. G.R. Diaz, Camp Smith, 272-6/267-11/539-17
- 16th - Cpl. T.D. Bartlett, Camp Smith, 263-3/275-13/538-16
- 17th - Cpl. S.J. Dooley, 1stMarBde, 275-6/263-13/538-13
- 18th - Sgt. R.A. Smith, Camp Smith, 266-6/271-9/537-15
- 19th - LCpl. M.A. Blackson, MarBks, 265-13/270-9/535-22
- 20th - Capt. C.U. Mulholland, MarBks, 269-7/266-5/535-12
- 21st - Col. G.T. Rucobo, BSSG, 272-8/259-17/531-25
- 22nd - 1stLt. R.L. Buss, 259-6/272-7/531-13
- 23rd - Cpl. S.A. Pickett, MAG-24, 273-8/257-6/530-14
- 24th - LCpl. M.P. Tagle, MarBks, 269-4/261-9/530-13
- 25th - SSgt. A.R. Square, 3/3, 260-8/269-12/529-20
- 26th - Cpl. R.D. Triplett, MarBks, 274-6/255-6/529-12
- 27th - LCpl. T.A. Holmes, Camp Smith, 263-15/262-5/525-20
- 28th - Cpl. J.D. Roe, MarBks, 261-7/264-7/525-14
- 29th - 1stLt. S.M. Heft, 3/3, 257-3/258-10/525-13
- 30th - GySgt. R.S. Saldivar, MAG-24, 262-6/257-7/525-13
- 31st - Sgt. K.A. Stulta, BSSG, 256-7/259-5/524-12
- 32nd - SSgt. G. Santos, MarBks, 262-10/261-8/523-18
- 33rd - Cpl. D.M. Rice, Camp Smith, 257-4/266-14/523-18
- 34th - Cpl. A.L. Horton, MarBks, 256-3/267-5/523-8
- 35th - J.S. Okita, civilian, 250-4/257-7/507-11
- 36th - SSgt. A. Pasillas, 1stMarBde, 255-6/264-8/519-14
- 37th - SSgt. R.A. Freetage, BSSG, 266-5/252-10/518-15
- 38th - 2ndLt. D.L. Hibbs, BSSG, 263-7/255-5/518-12
- 39th - Cpl. J.A. Ruscum, MarBks, 260-8/257-6/517-14
- 40th - Z.Y.K. Look, civilian, 258-7/258-7/516-14
- 41st - Sgt. J.S. Friere, BSSG, 259-8/255-6/514-14
- 42nd - LCpl. R.J. Dronogowski, MarBks, 259-6/255-2/514-8
- 43rd - G.A. Vlasak, civilian, 254-5/259-6/513-11
- 44th - Maj. R.S. Whitehead, 1stMarBde, 245-7/267-6/512-13
- 45th - GySgt. L.S. Cheatham, BSSG, 255-7/256-7/511-14
- 46th - Cpl. J.J. Reinitz, BSSG, 259-9/252-4/511-13
- 47th - LCpl. E.L. Willie, MarBks, 264-8/244-5/508-13
- 48th - LCpl. R.J. Johnson, 3/3, 271-9/236-4/507-13
- 49th - J.S. Okita, civilian, 250-4/257-7/507-11
- 50th - M.F. Langham, MarBks, 272-9/234-9/506-18
- 51st - Cpl. M.S. Ross, BSSG, 254-9/252-5/506-13
- 52nd - 2ndLt. R.M. McGuiness, BSSG, 252-5/254-6/506-11
- 53rd - Sgt. P. Yunker, Camp Smith, 257-9/246-5/503-14
- 54th - LCpl. H.X. Montaigne, MarBks, 244-6/253-10/503-14
- 55th - SSgt. G.A. Cuellar, Camp Smith, 245-5/258-8/503-13
- 56th - PFC R.J. Smith, MarBks, 244-6/259-6/503-12
- 57th - Sgt. R.A. Reese, 1stRadBn, 245-6/258-6/503-12
- 58th - M. Wong, civilian, 246-6/257-5/503-11
- 59th - LCpl. B.A. John, BSSG, 246-5/256-5/502-10
- 60th - SSgt. G. Torres, 1/12, 238-6/258-6/496-12
- 61st - Sgt. G.D. Stacey, MCAS, 250-1/243-4/493-5
- 62nd - SSgt. M. Robinson, MCAS, 245-4/245-3/490-7
- 63rd - 1stLt. A. Holzmeier, Camp Smith, 245-5/238-8/489-13
- 64th - LCpl. J.C. Pools, 1stRadBn, 233-4/256-9/489-13
- 65th - SSgt. R.P. Tryling, MCAS, 249-4/240-1/489-5
- 66th - GySgt. R.R. Brenes, Camp Smith, 239-4/249-9/488-13
- 67th - Maj. V.T. Miyagi, Hawaii NG, 241-9/243-7/484-15
- 68th - SSgt. J.R. Efferson, 1stRadBn, 244-9/241-4/485-13
- 69th - LCpl. M.S. Stacy, Camp Smith, 238-3/246-11/484-14
- 70th - GySgt. J.A. Garcia, 1/12, 224-4/259-3/483-7
- 71st - LCpl. R.E. Reetz, Camp Smith, 238-6/240-9/478-15
- 72nd - LCpl. H.L. Firestone, MAG-24, 224-2/250-7/474-9
- 73rd - LCpl. T.N. Dorsey, BSSG, 239-2/235-6/474-8
- 74th - LCpl. J. Nunez, Camp Smith, 226-7/246-9/472-16
- 75th - LCpl. C.A. White, 3/3, 232-2/233-3/465-5
- 76th - Cpl. G.N. Ikeda, MAG-24, 207-1/255-6/462-6
- 77th - Cpl. K.T. McDaniel, Camp Smith, 238-5/225-5/461-10
- 78th - GySgt. A.S. Ignacio, Camp Smith, 248-4/210-1/458-5
- 79th - Sgt. E.J. Pritchard, Camp Smith, 225-5/230-2/455-7
- 80th - LCpl. D.E. Lambird, 1/12, 208-2/234-3/442-5
- 81st - LCpl. B.E. Young, Camp Smith, 205-6/230-4/435-10
- 82nd - LCpl. M.D. Daniel, BSSG, 203-4/228-5/431-9
- 83rd - LCpl. W.H. Mohr, MarBks, 196-5/224-7/420-12
- 84th - SSgt. J.S. Murphy, MAG-24, 149-1/238-4/385-5
- 85th - L.B. Alejandro Sr., civilian, 165-0/190-0/355-0
- 86th - 1stLt. M.S. Toupin, 1/12, Disqualified/267-6/267-6

HELP WANTED M/F
NEED child care 1 yr old
MATH, READING, DIS-
COUNT, MOVING, utilities, 262-4013
Rank Cashier, Palmyra, \$750

HELP WANTED M/F
GOVERNMENT Jobs \$16,559
\$500/mo. 805-47-6000
beginning 9:15-5:30

HELP WANTED M/F
EARN extra money
\$5000. mo. improve yr
\$750. \$5000. mo. improve yr
\$750. \$5000. mo. improve yr
\$750. \$5000. mo. improve yr

HELP WANTED M/F
YARD and handyman w/
\$750

15 ANNOUNCEMENTS
PENNY STOCKS
Offers great investments
and opportunity. For
free brochure call
523-0938
Ask for E. Matsuyoshi
even, 735-3774
E.J. Phlock & Co.

**Affordable Yard &
Tree Service**
Free Estimates
262-8746

PAINTING, ext./int.
18 years experience.
Doug 238-7130

OHANA
LANDSCAPE AND
YARD SERVICE.
(Business & Residential)
CALL 261-4818

DRESSMAKING and alterations
for men and women.
Mon.-Sat. 9 to 5:30 p.m. 262-
804.

**WE service all makes and
models on all major appli-
ances. Reasonable rates. One
day service. We also sell new
and used appliances. Auro
Appliance, Phone 235-2071**

**ARTHUR Brickwood &
Associates General Contractor.**
(48C-256) Specializing in
new homes, major & minor
repairs, additions & more.
Good quality work. Ph. 293-
9183

**CLEANING, weekly, bi-weekly &
one time, exp. w/refs. Call
261-4254**

**Carrier Air
Conditioning**
Residential, Commercial
and Industrial equipment.
Sales and installation
261-0477

RESUMES
**WINDWARD
(and LEWARD)
RESUMES, ETC.**
PERSONALIZED WRITING:
261-7524
580 Uluhau St., Kailua, HI
Pearlridge Cir. #28-8381
Also open evenings and Saturdays

**Dorothy
Hazzard**
Resumes & Business
Writing
Free Consultation
947-8422
765 Amann St., #310
Behind KMB-TV Ch. 9

**GOOD JOBS ARE
AVAILABLE!**
Professional resumes open doors
Military Specialists
Free Consultation
-Mentored Job
Lead Services
**PROFESSIONAL RESUME
SERVICE**
735 Bishop St., #238 -
521-7901
"Established 1977"

**LEARN piano tuning. Write A.
Sator, 265 Oahu Ave., Hon.,
HI 96822**

50 BUSINESS OPPORTUNITIES
START your own business for
\$32,951. Home products. Call
Tammy, 531-4052

**OWN your own Jean-
sportswear, ladies apparel,
children's, large size,
combination, Western store,
accessories. Jardsche, Chic-
Lee, Levi, Easy Street, IZOD,
Esprit, Tommy, Calvin Klein,
Sergio Valente, Evan Picone,
Liz Claiborne, Members Only.
Organically Grown, Healthtex,
over 1000 others. \$7,900 to
\$24,900 inventory, training,
financing, grand opening etc.
Can open 15 days. Mr. Keenan
(905) 678-3639**

HELP WANTED M/F
**FULL-TIME
POSITION
AVAILABLE**
for
**LICENSED
MANAGER OPERATOR**
apply at
**BEAUTY SUPPLY
WINDWARD MALL**
235-3916
DONNA
MON-FRI. 9:30 AM-11 AM

TAX PREPARATION
Time is growing short - April 15 is
just around the corner. Avoid the
rush and let us complete your tax
returns before the deadline.
Call for an appointment.
We will come to your home.
VIKING BUSINESS SERVICES, LTD.
Sweida Larson 395-8101 Charles Everett 395-4687

REGISTERED NURSES
Excellent opportunity to join a progressive
leader in the health field. Imm late hospital
nursing positions available in medical/sur-
gical units. Acute hospital experience
preferred.
Please apply in person or contact
Straub Clinic and Hospital Inc.
Human Resources office
1100 Ward Avenue, Suite 1180
First Insurance Bldg.
Validated parking at Straub
An equal opportunity employer

**SOME EMPLOYERS
DEMAND EXPERIENCE.
WE OFFER IT.**
You've had this happen to you; you apply for the
job, and they ask for experience. How do you get
experience if you don't get the job?
One great place is the Army. There are over 300
different skills to choose from. Administrative,
technical, medical. Many are in high-tech areas, and
many have uses in several civilian fields.
You train with advanced, sophisticated learning
methods in specialized schools.
And when somebody asks for experience, you can
give them an earful. Here's where to start.
Kaneohe 233-9491 Wahiawa 871-3034
Waipahu 822-3989 Kaimuki 732-8901
Pearl City 486-3888 Kailua 447-3888

HELP WANTED M/F
NEED child care 1 yr old
MATH, READING, DIS-
COUNT, MOVING, utilities, 262-4013
Rank Cashier, Palmyra, \$750

HELP WANTED M/F
GOVERNMENT Jobs \$16,559
\$500/mo. 805-47-6000
beginning 9:15-5:30

HELP WANTED M/F
EARN extra money
\$5000. mo. improve yr
\$750. \$5000. mo. improve yr
\$750. \$5000. mo. improve yr

HELP WANTED M/F
YARD and handyman w/
\$750

235-5881

HELP WANTED M/F
NEED child care 1 yr old
MATH, READING, DIS-
COUNT, MOVING, utilities, 262-4013
Rank Cashier, Palmyra, \$750

HELP WANTED M/F
GOVERNMENT Jobs \$16,559
\$500/mo. 805-47-6000
beginning 9:15-5:30

HELP WANTED M/F
EARN extra money
\$5000. mo. improve yr
\$750. \$5000. mo. improve yr
\$750. \$5000. mo. improve yr

HELP WANTED M/F
YARD and handyman w/
\$750

235-5881

HELP WANTED M/F
NEED child care 1 yr old
MATH, READING, DIS-
COUNT, MOVING, utilities, 262-4013
Rank Cashier, Palmyra, \$750

HELP WANTED M/F
GOVERNMENT Jobs \$16,559
\$500/mo. 805-47-6000
beginning 9:15-5:30

HELP WANTED M/F
EARN extra money
\$5000. mo. improve yr
\$750. \$5000. mo. improve yr
\$750. \$5000. mo. improve yr

HELP WANTED M/F
YARD and handyman w/
\$750

235-5881

HELP WANTED M/F
NEED child care 1 yr old
MATH, READING, DIS-
COUNT, MOVING, utilities, 262-4013
Rank Cashier, Palmyra, \$750

HELP WANTED M/F
GOVERNMENT Jobs \$16,559
\$500/mo. 805-47-6000
beginning 9:15-5:30

HELP WANTED M/F
EARN extra money
\$5000. mo. improve yr
\$750. \$5000. mo. improve yr
\$750. \$5000. mo. improve yr

HELP WANTED M/F
YARD and handyman w/
\$750

235-5881

Army Hawaii Community Theatre
presents

FIDDLER ON THE ROOF
FEB. 21, 22, 23, 24, & 28
MAR. 1, 2, 3, 7, 8, 9, 10
7:30 p.m.
\$4 general admission
OPEN TO THE PUBLIC
For reservations call 655-9091
1 p.m.-10 p.m.
Bldg. 359 Schofield Barracks

SAY IT where they can **SEE IT...**

Call 235-5881

FREE CLASSES

STARTS MARCH 4th-31st

MON: 7:30 PM
FRI: 9:00 AM
SUN: 2:00 PM

602 KAILUA Rd.
Kailua
(Above Hays)

262-2942 Rm. 210



TOP QUALITY FIREARMS AND EQUIPMENT.

FREE CASH

Super discounts
Special orders
Layaway plan
-Call now-

FRONZ'S
FRONZ'S FIREARMS & EQUIPMENT

68 VACATION RENTALS

KAILUA BEACH, lovely, quiet, 2 bdrm, 2 bath home. May thru Aug. \$1400 mo. 262-2830

RENTALS WANTED

NEEDED: 1 or 2 bdrm, furnished apt., cottage, house in Kalaheo High School District. 926-8708 after 8 p.m. Terms flexible.

MOVING TO DC? See for swap/rent. 35 min to Pent/Nav Annex, 4 1/2 split/4 bdrm/2 bath/victy kit/family dr. rm./bunk lv rm./W in family rm. Avail Jun 85. Write: Maj. Steve Tagg, 8301 Postok Rd., Potomac, MD 20854.

REAL ESTATE FOR SALE

REAL ESTATE AGENTS needed for 14 regional offices in Oahu. Call Jo Jones Shivers (CAS) 844-1111. 844-1111. 844-1111.

FREE FREE

Choose between a deluxe microwave oven or designer stereo system absolutely FREE when we arrange the purchase of your next home. For details call W.T. Nagao Realty at 488-0873 or 395-4765. Ask for Wally.

MAKAHA 3 bdrm., 1 1/2 bath, complete cyclone landscaped, 13,000 sq. ft. across from ocean on Upena St. \$145,000. Assumable \$90,000. Agreement of sale 11.3%, 6 1/2 yrs. Everett, 696-6366, 696-6713.

ALARGE Fee home Malli Sands, walk to beach \$107,600. Catherine (R) 668-1200.

IMMEDIATE OCCUPANCY! Assumable 9% Fee 3 bdrm, house w/enced yard near beach, \$83,000. Catherine (R) 668-1200.

PRICED Reduced to \$105,000 & Assumable 9% Fee 3 bdrm, 2 bath, 14 x 20' lam rm., din. rm., drapes, carpet, patio, lgs., landscaped yard. Diamond Head view. Fee simple. For more details 737-3774 June.

FOR Sale in lower Makaha the perfect family house 3 bdrm., 2 bath, 14 x 20' lam rm., din. rm., drapes, carpet, patio, lgs., landscaped yard. Diamond Head view. Fee simple. For more details 737-3774 June.

BY OWNER fee simple, 3 bdrm., 2 bath, easily converted to 4 bdrm, ex. located Alii Park, Kailua. Close to beach, MCAS schools. Must see. Assumable mortgage, 11 1/2%. Furnished \$183,500. Call 254-5348.

RENT/OWN

Kailua - Kaneohe near MCAS. Your choice of like new 2 & 3 bdrm. Homes, Townhomes or Apartments. Available now. From only \$850 per month. Don't Delay, Call Today!

ONELOCK HOMES REALTY

254-1100 or 254-2770

120 FURNITURE

STUDENT rolltop desk, 45x, lgs. wicker chest, \$75. Call 261-6665

KING sz. bed w/2 box springs, 150 various other furniture. Call Doug or Rick 262-0574

DINING room set, hutch - French Prov. \$200 lamps: beds: & misc. 877-9378

5 PC wicker bdrm. set Natural color \$499 834-1080

FURNITURE WANTED

For dressers, beds, rattan, wicker, etc. Call Mon.-Fri. 8 a.m. to 5 p.m. 247-6621

FREE PICKUP CASH \$

For good used furniture: Rattan, wicker & beds. 261-8492 or 261-1406

128 MISCELLANEOUS

HOOVER Concept II vacuum cleaner, power drive, auto height adjustment, power mite included \$417 value. Have 3 demos \$175 both stores. Pacific Surplus Dist. Ltd. 455-9010 or 262-8131

9 CU. FT. Freezer, good cond. \$200; Phone answer system \$150; Ph. 254-4807

GREEN vinyl Lazyboy chair \$40; DC power supply 0-20 volt \$100; 261-4526

VACUUMS A-1 rebuilt "many to choose" from \$38.95. 30 day warranty. 262-8131

DINING room set \$350 love seat \$200; Emerson stereo \$200; ottoman \$50 chair \$100; trunk \$25; Sansa stereo \$800. 847-8802

HOME Gym-gym pac 2000 brand new \$200. Call 395-2419

NEW single-head xlong \$95; 2x5 glass coffee table \$150. 262-5598

AMWAY Products delivered, money back guarantee. Call 487-5241

PIANO TUNING \$2000

Free Interior Cleaning & Free Bug Treatment. all included anywhere on Oahu. 28 years experience. German trained. Mr. Meyers 395-0029

126 MISCELLANEOUS

WASHER, \$50; men's 10 spd. Fuji bike, \$50; twin puncees 261-9861 after 6:30

SACRIFICE - Grandfather clock \$375, 6 months old. Call 395-8241, 395-4209

FABRIC Sale: collons, corduroy, nylon, quilted/unquilted, ribbon, zippers, velcro, thread, 150 Humakua #103, Kailua, Sat. 10 a.m.

QUEEN size mattress and box spring, \$50, misc. camera lens. Ph. 235-3232

SPINNING reels, \$5-\$10; electric adding machine, \$8; cat scratching post \$5; toaster oven \$10. 261-2644

BOOKCASE, bed, desk set, girl's bike, Lowrey organ. Ph. 239-9040 AKKI PI

DON'T Read - Self Improvement/Sell Hyponosis tapes. Just listen about 45 min a day. Over 150 different titles. Free catalog. P. A. T. H. 1513-7 Maluaeua St., Pearl City, HI 96782

'84 RAINBOW Vacuum, like new. Cost \$850. Must sell \$250. 923-7943, 735-2055

LADIES Lynx custom golf clubs, 1, 3, 4, 5 woods, irons 3 thru 9, PW & SW Graphite shaft driver, bag incl., exc. \$250. 261-0052

DINETTE set \$75; surfboard rack \$15; twin box spring, like new, \$25; 4 new deluxe Champion Firestone radial tires P-196/75R15 \$150. 455-5310

NEW Picnic tables \$40; Porch swings \$70. Phone 293-8392

'84 FILTER Queen Vacuum, Cost \$800. Like new. Must sell \$250. 735-3522, 922-5213

9 CU. FT. Freezer, good cond. \$200; Phone answer system \$150; Ph. 254-4807

GREEN vinyl Lazyboy chair \$40; DC power supply 0-20 volt \$100; 261-4526

VACUUMS A-1 rebuilt "many to choose" from \$38.95. 30 day warranty. 262-8131

DINING room set \$350 love seat \$200; Emerson stereo \$200; ottoman \$50 chair \$100; trunk \$25; Sansa stereo \$800. 847-8802

HOME Gym-gym pac 2000 brand new \$200. Call 395-2419

NEW single-head xlong \$95; 2x5 glass coffee table \$150. 262-5598

AMWAY Products delivered, money back guarantee. Call 487-5241

126 MISCELLANEOUS

COLOR TV \$135; refrig. \$250; elec range \$185; washer \$150; dryer \$110; stack combo \$295; quartz clock. 528-3122

ESSENCE maker, 6 cup, electric, \$85. 395-2785

LOSE weight get energy, herbelle distributor, Judy, 455-7766

APPLE II+ Computer with two drives, printer, \$995. Ph. 261-1097

AUTOMATIC swing-cribble, playpen, portable bassinet, misc. baby 262-9387 evs.

KENMORE harvest gold washer/dryer, \$250 set, 10 spds. \$65 on 488-8112

LOSE 10-21 lbs a month. Herbal Diet, look & feel better. Ask Ron 254-2629

CUT glass: elec mower & edger, mink stool, string bass, din. set; golf clubs, 262-4025 days.

CAPTAIN'S bed w/3 large drawers, \$70; color TV, Panasonic, 19", \$175. 262-7249

19 cu. ft. refrig., rattan set, gas dryer, trundle bed & bikes. 262-5124

ROCKING chair w/airkit and cushions, \$25; brown plaid chair, \$25. 839-4279

AIR conditioner, 8000 btu only 3 hrs. use. Fedders, \$385, energy saver. 262-2846

NEW electric hospital bed, sacralia \$700; Steirway piano \$4,000. 396-3882

KENMORE dryer, excl. working condition, \$75. Call 254-4133

KIMBALL baby grand piano \$1,800 or will trade for Splinet in excl. cond., 293-1060

127 APPLIANCES

FREE trial multi-pure water purifiers. For free demo call 671-8491

KENMORE washer & dryer, heavy duty, extra lge. capacity \$200 for both. 422-1678

DRYER \$150 or best offer, washer \$25 or best offer. Call 486-9043

19 CU. FT. Kenmore refrigerator, w/ice maker, \$300. 254-1175

FOR Sale Compact washer & dryer & 7 ft. surfboard. Call 423-2423

KENMORE portable washer/dryer, permanent hooops, excellent condition, \$375. Call 423-2423

131 WIKI WIKI FREEBEE

FREE Suzy, 1 yr. indoor cat, solid gray, spayed, part Persian, sm., very cute, 262-8344

FREE Collie/Shepherd female, 8 mos., Torrier, female, 3 mos., & Siamese cat, 6 mos. 621-2588

FREE mixed lab, black, spayed, housebroken, 2 yrs., tortoise shell cat, spayed 1 yr. 627-4888

131 WIKI WIKI FREEBEE

FREE baby bunnies, 10 good homes. Call 238-4332

FREE: Boxer 4 1/2 year old, female, great w/kids. Call 262-9896

FREE female terrier to loving responsible home only. 845-2884 evs.

FREE Pit bull/terrier, male, 6 mo.; Pit bull/terrier, female, 3 mo., need perm. home. 422-6257

146 BOATS SUPPLIES & SERV. 13.8 FIBERGLASS boat, 35-hp. motor, w/trailer \$1500; 12' Jonboat w/trailer \$250. 254-5160

SUNFISH sailboat, like new, w/carrir, \$875/offer. 944-0015.

SPORT FISHING on the MISS MAKAHA

Deep sea fishing along the scenic Waianae coast, with usually wind sheltered seas for MARLIN, TUNA, ONO, MAHIMAH

We supply all gear. Just bring your lunch. Maximum 6 passengers, but special rates for private parties of 1-4.

FULL DAY (7 HRS) \$220 HALF DAY (4 HRS) \$150

The "MISS MAKAHA" is berthed at Waianae Harbor, Slip A-30

CALL CAPT. FRED RACKLE Ph. 695-9923

DON'T BLOW IT UP!

Collision & Restoration Work - Foreign & Domestic Specialist in Color Match & Complete Paint. Acrylic Enamel - Lacquer & Imron

CALL 261-8565 or 261-8564

Carole Johnson 171-B Hamakua Drive Kailua, Hawaii 96734

Free Estimates - Our Workmanship is Guaranteed

FREE BATTERY FACTORY

New and Reconditioned Auto Batteries \$25 + trade + up New Motorcycle Batteries 747 Kapulani 533-3312

CUSTOM MADE BUMPER STICKERS

LICENSE PLATES & FRAMES \$3.00 BACK UP BEPPEPS \$12.00 537-9165

136 MISCELLANEOUS WANTED

WE BUY USED FURNITURE WE PAY CASH AND PICKUP CALL 261-8492 or 261-1406

WANTED! used/broken color TV's, refrig., ranges, washer/dryers, VCR's, computers. Free pickup. Islandwide 528-3122

EXPERT PIANO MOVING Crating, Shipping, 833-1859 - S & S Delivery 396-7295

GUITAR and/or singing lessons for beginners through advanced, 1 hour lesson per week, \$25 per mo. Flat rate. Tim a patient professional teacher. 846-2659, 474-3115

20' NEWPORT sailboat Great condition, includes 5 sails, outboard, many extras. \$6,000. Call 257-2891.

REGISTERED Arabian and Ajay's stud service, 841-0158

PALOMINO quarter, 7, Gelding, 15 mos, pleasure Ph. 259-5333 after 7 p.m.

PET SUPPLIES SALES & SERVICE PETS groomed professionally/reasonable rates. Hawaii Kai 395-3901

MAXON Floor hoist, 1 ton air hoist; Misc. hand & power tools. 841-0158

NEW '84 CHEVY TRUCKS \$3000 DISCOUNT* 4x4 & 2 WHEEL DRIVLS S 10 PICKUPS EL CAMINOS FULL SIZE PICKUPS 12 TO CHOOSE FROM *\$2000 discount from MSRP. See dealer for details.

8.8% APR* *All new Chevy \$1000 discount. All X 35 months. GMAC FINANCING 60 MOS DAC IN CHEVROLET MAZDA TRUCK CENTER NEW 12 DAY BY THE SUPPORT Ph. 839-0770

NEW '84 CHEVY TRUCKS \$3000 DISCOUNT* 4x4 & 2 WHEEL DRIVLS S 10 PICKUPS EL CAMINOS FULL SIZE PICKUPS 12 TO CHOOSE FROM *\$2000 discount from MSRP. See dealer for details.

8.8% APR* *All new Chevy \$1000 discount. All X 35 months. GMAC FINANCING 60 MOS DAC IN CHEVROLET MAZDA TRUCK CENTER NEW 12 DAY BY THE SUPPORT Ph. 839-0770

NEW '84 CHEVY TRUCKS \$3000 DISCOUNT* 4x4 & 2 WHEEL DRIVLS S 10 PICKUPS EL CAMINOS FULL SIZE PICKUPS 12 TO CHOOSE FROM *\$2000 discount from MSRP. See dealer for details.

8.8% APR* *All new Chevy \$1000 discount. All X 35 months. GMAC FINANCING 60 MOS DAC IN CHEVROLET MAZDA TRUCK CENTER NEW 12 DAY BY THE SUPPORT Ph. 839-0770

NEW '84 CHEVY TRUCKS \$3000 DISCOUNT* 4x4 & 2 WHEEL DRIVLS S 10 PICKUPS EL CAMINOS FULL SIZE PICKUPS 12 TO CHOOSE FROM *\$2000 discount from MSRP. See dealer for details.

8.8% APR* *All new Chevy \$1000 discount. All X 35 months. GMAC FINANCING 60 MOS DAC IN CHEVROLET MAZDA TRUCK CENTER NEW 12 DAY BY THE SUPPORT Ph. 839-0770

NEW '84 CHEVY TRUCKS \$3000 DISCOUNT* 4x4 & 2 WHEEL DRIVLS S 10 PICKUPS EL CAMINOS FULL SIZE PICKUPS 12 TO CHOOSE FROM *\$2000 discount from MSRP. See dealer for details.

8.8% APR* *All new Chevy \$1000 discount. All X 35 months. GMAC FINANCING 60 MOS DAC IN CHEVROLET MAZDA TRUCK CENTER NEW 12 DAY BY THE SUPPORT Ph. 839-0770

NEW '84 CHEVY TRUCKS \$3000 DISCOUNT* 4x4 & 2 WHEEL DRIVLS S 10 PICKUPS EL CAMINOS FULL SIZE PICKUPS 12 TO CHOOSE FROM *\$2000 discount from MSRP. See dealer for details.

8.8% APR* *All new Chevy \$1000 discount. All X 35 months. GMAC FINANCING 60 MOS DAC IN CHEVROLET MAZDA TRUCK CENTER NEW 12 DAY BY THE SUPPORT Ph. 839-0770

NEW '84 CHEVY TRUCKS \$3000 DISCOUNT* 4x4 & 2 WHEEL DRIVLS S 10 PICKUPS EL CAMINOS FULL SIZE PICKUPS 12 TO CHOOSE FROM *\$2000 discount from MSRP. See dealer for details.

8.8% APR* *All new Chevy \$1000 discount. All X 35 months. GMAC FINANCING 60 MOS DAC IN CHEVROLET MAZDA TRUCK CENTER NEW 12 DAY BY THE SUPPORT Ph. 839-0770

NEW '84 CHEVY TRUCKS \$3000 DISCOUNT* 4x4 & 2 WHEEL DRIVLS S 10 PICKUPS EL CAMINOS FULL SIZE PICKUPS 12 TO CHOOSE FROM *\$2000 discount from MSRP. See dealer for details.

8.8% APR* *All new Chevy \$1000 discount. All X 35 months. GMAC FINANCING 60 MOS DAC IN CHEVROLET MAZDA TRUCK CENTER NEW 12 DAY BY THE SUPPORT Ph. 839-0770

136 MISCELLANEOUS WANTED

WE BUY USED FURNITURE WE PAY CASH AND PICKUP CALL 261-8492 or 261-1406

WANTED! used/broken color TV's, refrig., ranges, washer/dryers, VCR's, computers. Free pickup. Islandwide 528-3122

EXPERT PIANO MOVING

Crating, Shipping, 833-1859 - S & S Delivery 396-7295

GUITAR and/or singing lessons for beginners through advanced, 1 hour lesson per week, \$25 per mo. Flat rate. Tim a patient professional teacher. 846-2659, 474-3115

20' NEWPORT sailboat Great condition, includes 5 sails, outboard, many extras. \$6,000. Call 257-2891.

REGISTERED Arabian and Ajay's stud service, 841-0158

PALOMINO quarter, 7, Gelding, 15 mos, pleasure Ph. 259-5333 after 7 p.m.

PET SUPPLIES SALES & SERVICE PETS groomed professionally/reasonable rates. Hawaii Kai 395-3901

MAXON Floor hoist, 1 ton air hoist; Misc. hand & power tools. 841-0158

NEW '84 CHEVY TRUCKS \$3000 DISCOUNT* 4x4 & 2 WHEEL DRIVLS S 10 PICKUPS EL CAMINOS FULL SIZE PICKUPS 12 TO CHOOSE FROM *\$2000 discount from MSRP. See dealer for details.

8.8% APR* *All new Chevy \$1000 discount. All X 35 months. GMAC FINANCING 60 MOS DAC IN CHEVROLET MAZDA TRUCK CENTER NEW 12 DAY BY THE SUPPORT Ph. 839-0770

NEW '84 CHEVY TRUCKS \$3000 DISCOUNT* 4x4 & 2 WHEEL DRIVLS S 10 PICKUPS EL CAMINOS FULL SIZE PICKUPS 12 TO CHOOSE FROM *\$2000 discount from MSRP. See dealer for details.

8.8% APR* *All new Chevy \$1000 discount. All X 35 months. GMAC FINANCING 60 MOS DAC IN CHEVROLET MAZDA TRUCK CENTER NEW 12 DAY BY THE SUPPORT Ph. 839-0770

NEW '84 CHEVY TRUCKS \$3000 DISCOUNT* 4x4 & 2 WHEEL DRIVLS S 10 PICKUPS EL CAMINOS FULL SIZE PICKUPS 12 TO CHOOSE FROM *\$2000 discount from MSRP. See dealer for details.

8.8% APR* *All new Chevy \$1000 discount. All X 35 months. GMAC FINANCING 60 MOS DAC IN CHEVROLET MAZDA TRUCK CENTER NEW 12 DAY BY THE SUPPORT Ph. 839-0770

NEW '84 CHEVY TRUCKS \$3000 DISCOUNT* 4x4 & 2 WHEEL DRIVLS S 10 PICKUPS EL CAMINOS FULL SIZE PICKUPS 12 TO CHOOSE FROM *\$2000 discount from MSRP. See dealer for details.

8.8% APR* *All new Chevy \$1000 discount. All X 35 months. GMAC FINANCING 60 MOS DAC IN CHEVROLET MAZDA TRUCK CENTER NEW 12 DAY BY THE SUPPORT Ph. 839-0770

NEW '84 CHEVY TRUCKS \$3000 DISCOUNT* 4x4 & 2 WHEEL DRIVLS S 10 PICKUPS EL CAMINOS FULL SIZE PICKUPS 12 TO CHOOSE FROM *\$2000 discount from MSRP. See dealer for details.

8.8% APR* *All new Chevy \$1000 discount. All X 35 months. GMAC FINANCING 60 MOS DAC IN CHEVROLET MAZDA TRUCK CENTER NEW 12 DAY BY THE SUPPORT Ph. 839-0770

NEW '84 CHEVY TRUCKS \$3000 DISCOUNT* 4x4 & 2 WHEEL DRIVLS S 10 PICKUPS EL CAMINOS FULL SIZE PICKUPS 12 TO CHOOSE FROM *\$2000 discount from MSRP. See dealer for details.

8.8% APR* *All new Chevy \$1000 discount. All X 35 months. GMAC FINANCING 60 MOS DAC IN CHEVROLET MAZDA TRUCK CENTER NEW 12 DAY BY THE SUPPORT Ph. 839-0770

NEW '84 CHEVY TRUCKS \$3000 DISCOUNT* 4x4 & 2 WHEEL DRIVLS S 10 PICKUPS EL CAMINOS FULL SIZE PICKUPS 12 TO CHOOSE FROM *\$2000 discount from MSRP. See dealer for details.

8.8% APR* *All new Chevy \$1000 discount. All X 35 months. GMAC FINANCING 60 MOS DAC IN CHEVROLET MAZDA TRUCK CENTER NEW 12 DAY BY THE SUPPORT Ph. 839-0770

NEW '84 CHEVY TRUCKS \$3000 DISCOUNT* 4x4 & 2 WHEEL DRIVLS S 10 PICKUPS EL CAMINOS FULL SIZE PICKUPS 12 TO CHOOSE FROM *\$2000 discount from MSRP. See dealer for details.

8.8% APR* *All new Chevy \$1000 discount. All X 35 months. GMAC FINANCING 60 MOS DAC IN CHEVROLET MAZDA TRUCK CENTER NEW 12 DAY BY THE SUPPORT Ph. 839-0770

NEW '84 CHEVY TRUCKS \$3000 DISCOUNT* 4x4 & 2 WHEEL DRIVLS S 10 PICKUPS EL CAMINOS FULL SIZE PICKUPS 12 TO CHOOSE FROM *\$2000 discount from MSRP. See dealer for details.

171 MOTORCYCLES SALES & SERVICE
 '83 SUZUKI 650 Tamper Must sell \$1600 or best offer. Call 235-8118

82 HONDA Aspencade GL 1100A, AM/FM cassette/CB intercom, electronic cruise, many more extras. 26,000 inv. \$2,000 below appraisal. 423-1416

178 AUTOS FOR SALE
CONVERT THE DOLLAR VALUES BEFORE YOU BUY AT DOLLAR CAR SALES
 DOWN LAGOON DR. PH. 926-4260

ALFA ROMEO

'79 Alfa Spider \$5575
 Convertible 5 spd stereo alloy wheels. (APV288)
J.N. CHEVROLET/MAZDA
 836-1222 2999 N. Nimitz Hwy.

AMC

'74 AMC Pacer, w/air, incl. roof rack, excl. mechanical cond. \$800. 261-1357

'87 AMC Rebel wagon, 4 spd, std. 1200, good cond. new inc. \$500/offer. 455-7426

AUSTIN HEALEY

'67 AUSTIN Healy Sprite, restored, excl cond, new paint, AM/FM stereo, \$1800 or offer. 455-1803 BUICK

'79 BUICK Regal, 2 dr., fully loaded, low mileage, mint condition. Call Carroll 623-8123 or 455-1071

CHEVROLET

'72 CHEVY Impala convertible, new top, rubber, starter, rebuilt front end, part. restored. 263-4514

MUST SELL '76 CORVETTE, excl. cond., a.c., 1-top, new NCT Goodyear radials, \$2,000 lacquer paint job. (You choose the color.) New complete \$2000 brake system, AM/FM cassette stereo, low mil., \$13,000. Invested \$10,000. \$3500/offer. Call Chris 235-5881 days or 235-0387 eves.

'77 MALIBU, 9 passenger station wagon, loaded, 1 owner, \$1800/offer. 261-3772

'73 MALIBU, auto, As is, \$500. Call 261-1000

'84 Vette (BU964) \$23,975
 Black/black, awesome 4 spd., loaded incl. headers, like new

'73 Vette (T23186) \$7975
 Yellow/black, leather, auto, loaded. 1 top low mil., clean

J.N. CHEVROLET/MAZDA
 836-1222 2999 N. Nimitz Hwy.

'85 MONTE CARLO S/S
 Factory ordered for as low as \$11,442 or you can LEASE! OAC

'85 DOWN*
 And payments of \$252⁹⁷/mo.*

CONTACT: TONY GREGORY 836-1222 2999 N. Nimitz Hwy. J.N. CHEVROLET/MAZDA

Going to OREGON to buy a new car or pickup? —contact— ROBERTS & REDFIELD PORTLAND Write for price lists and full information ANY MAKE - ANY MODEL Delivered - road tested at Portland International Airport ROBERTS & REDFIELD Suite #102 6829 N.E. 82nd Portland, Oregon 97220 (503) 257-0551 Conveniently located just 3 minutes from Airport

'82 LeBaron \$6775
 2 dr., beautifully eqpt. (BU000) J.N. CHEVROLET/MAZDA 836-1222 2999 N. Nimitz Hwy.

DATSUN

'84 Sentra, \$6975 Wagon, auto, power steering, air, stereo, like new (B1749)

'83 Pulsar, \$5975 2 dr., 5 spd., super sunroof, sun roof, like new (AW1192)

'81 Datsun 510, \$3775 4 dr., hatchback, auto, stereo, sharp (B6441)

'81 Datsun B210, \$2175 2 dr., 3 spd., AM/FM, tape, CB, clean (M10331)

J.N. CHEVROLET/MAZDA
 836-1222 2999 N. Nimitz Hwy.

'80 DATSUN 210, 2 dr., hatchback, 5 spd., AM/FM cassette, like new, \$2300. 100% financing, call 261-3001 after 5 pm

'72 510 DATSUN station wagon, good running car, \$450. Call 261-7022

'79 Datsun 510 wagon, auto roof rack, \$2800. Call 235-1861

'79 DATSUN 210, 2 dr., sedan, standard, good condition, \$1200 or offer. Call 262-1302

DODGE

'72-'73 DODGE Challenger, 2 dr., fully equip. for parts only \$250/offer. 247-0152/293-5646

'80 DODGE OMNI (T23018) \$1975
 4 dr., 4 spd. hatchback J.N. CHEVROLET/MAZDA 836-1222 2999 N. Nimitz Hwy.

HONDA

'81 CIVIC, 4 dr., low mil., new paint, AM/FM cassette \$4195. PH. 623-7372

'83 HONDA ACCORD \$7475
 4 dr., auto., power steering, stereo, air, like new (AWN621) J.N. CHEVROLET/MAZDA 836-1222 2999 N. Nimitz Hwy.

CHECK OUR SAVINGS ON ALL '85's NOW AT TONY HONDA PEARLRIDGE 487-5595

FIAT

'75 FIAT X19, convertible, green w/black trim, new tires, \$1000. 456-2903

FORD

'78 MUSTANG, V6, 4 spd., power, good cond., \$2700. 261-7067.

'72 MUSTANG, running, '85 registration, \$300/offer. Call 261-4879

FORD
 '78 GRAND Torino auto black interior, good condition, \$3600 or offer. Call 262-1302

MASERATI

Maserati Bi-Turbo
 Now selling off final allocation of '84 Bi-Turbo Sport Sedana. Own a Maserati legend for as low as \$22,975 (BIL. #4335) Executive Demo HAWAII'S FACTORY AUTHORIZED MASERATI DEALER JN MASERATI SALES SERVICE PARTS 2999 N. NIMITZ HWY. 336-7725

MAZDA

'79 MAZDA RX7, 10,000 mi., auto, 100% cond. in 8 spd., 395,752 partly a/m. after 5

'79 MAZDA RX7 GS, air sun roof, tape deck, 5 spd., \$5100. 254-3989

'81 MAZDA GLC, 4 dr. sedan, 5 spd., w/ stereo, features, incl. sunroof, power windows, & custom upholstery. \$980. 7051-696-2909. 1/2 mission. \$7,500.

MAZDA

'76 MERCURY Monarch, excels in transmission work. \$600 or best offer. 261-0651

'80 Capri (ATN768) \$3275 2 dr. sports hatchback loaded J.N. CHEVROLET/MAZDA 836-1222 2999 N. Nimitz Hwy.

BRITISH AUTO

EXPERT SERVICE AND PARTS FOR BRITISH SPORTSCARS
 TRANSMISSION, CARBURETOR AND ELECTRICAL SPECIALISTS
 NO CHARGE FOR DIAGNOSIS OF PROBLEMS
 ALL WORK GUARANTEED FOR 90 DAYS
 MONDAY-SATURDAY 9-5 235-1818
 10-1028 ALAHA STREET, KANEHOE, HI

MAZDA SALE 4 DAYS ONLY WINDWARD MAZDA in the Windward Mall

SAVE \$2000
 No down - 0% financing with approved credit
 BUY ANY NEW '85 MAZDA 626 OR RX-7 IN STOCK AND GET \$2000 WORTH OF ACCESSORIES AT NO CHARGE:
 • Air Conditioning • Rustproof & Weatherseal • Wheel Well Molding
 • 5-Yr./Unlimited Mileage Warranty (N) • Custom Floor Mats
 OR
6.9% Annual Percentage Rate 48 mos. - 20% down with approved credit
 Good thru 3/3/85
 NO REASONABLE OFFER REFUSED AT WINDWARD MAZDA In the Windward Mall 235-5811

OUR CUSTOMERS... OUR FRIENDS

TONY HONDA PEARLRIDGE

MOVED NEXT DOOR SUPER SALE!

SPECTACULAR SAVINGS

NOW IN TONY HONDA BLUE BLDG. 98-057 KAM HWY. 487-5595

98-057 KAM HWY. 487-5595

SALE ENDS 3/6/85 Prices plus tax & license. Subject to prior sale. SPECIALIZE IN MILITARY FINANCING

3149 N. Nimitz Hwy. 922 Kam Hwy.

SALE ENDS 3/6 WED. Price + Tax & Lic.

PACIFIC OLDSMOBILE & GMC

MILITARY FINANCING

777 So. King 531-9922

MILITARY FINANCING

777 So. King 531-9922

MILITARY FINANCING

777 So. King 531-9922

MILITARY FINANCING

777 So. King 531-9922

MILITARY FINANCING

777 So. King 531-9922

MILITARY FINANCING

777 So. King 531-9922

MILITARY FINANCING

777 So. King 531-9922

MILITARY FINANCING

777 So. King 531-9922

MILITARY FINANCING

777 So. King 531-9922

MILITARY FINANCING

777 So. King 531-9922

MILITARY FINANCING

777 So. King 531-9922

MILITARY FINANCING

777 So. King 531-9922

MILITARY FINANCING

777 So. King 531-9922

MILITARY FINANCING

777 So. King 531-9922

MILITARY FINANCING

777 So. King 531-9922

MILITARY FINANCING

777 So. King 531-9922

MILITARY FINANCING

777 So. King 531-9922

MILITARY FINANCING

MAZDA
 '85 626 4 dr. deluxe, 5 spd., power steering, wheel covers, radial tires, reclining front bucket seats, stereo, tinted glass & much more (M4291)

'85 626
 or you can LEASE OAC* \$199/mo.*
 Good thru 3/6/85. 48 mos. close end lease. 100% financing. \$1000 down. \$4887.48. Total mil. 395,752

CONTACT: TONY GREGORY
 836-1222 2999 N. Nimitz Hwy. J.N. CHEVROLET/MAZDA

MERCURY

'84 MERCURY Topaz, air power steering, 4 dr., AM/FM stereo, \$7999. 487-8601

'76 MERCURY Monarch, excels in transmission work. \$600 or best offer. 261-0651

'80 Capri (ATN768) \$3275
 2 dr. sports hatchback loaded J.N. CHEVROLET/MAZDA 836-1222 2999 N. Nimitz Hwy.

MG

'74 MG Midget, excl. number new top, \$2200. Linda. 261-5346

OLDSMOBILE

'77 Olds Omega \$1675 4 dr. fully equip. (173628) J.N. CHEVROLET/MAZDA 836-1222 2999 N. Nimitz Hwy.

PLYMOUTH

'69 PLYMOUTH, good running condition \$300. Call 261-3705 M-N 8-1-8

'70 PLYMOUTH, runs great. First \$200 has it. Call 235-0853 eves.

PONTIAC

FOR Sale! 1971 Toyota Corolla 1200cc, auto trans, 4 spd. interior, little to no rust, new radials, new muffler, extra \$850. Call 637-3102. ask for Bob

CUTTER FORD

MILITARY FINANCING AVAILABLE

'77 MUSTANG, Parts Only \$295

'73 CATALINA \$695

'75 MALIBU \$895

'77 LTD II \$995

'75 FAIRMONT \$995

'67 BUG \$1095

'78 TOYOTA \$1095

'76 GRAND PRIX \$1295

Feb. 28, Mar. 1, 2

98-015 Kam Hwy., AIEA * Ph: 487-3811

SPECIALS!!!

'78 DODGE MAGNUM CPE. \$995

'76 DATSUN P/U W/CAMPER \$1295

'78 PINTO WAGON \$1295

'75 CHEVY 1/2 TON P/U \$1995

'77 TOYOTA COROLLA L/B \$1995

'83 JEEP CJ5 \$6795

Offer Good Thru March 6

PEARLHARBOR

AMC/Jeep

Waipahu We buy cars too! 677-0709

Cutter Dodge

Military Financing Available

Immediate Delivery

'80 Pinto \$888

'72 VW Bug \$2988

'77 Honda Accord \$2995

'77 Toyota Hilux \$2995

'79 Ford Thunderbird \$3985

'77 VW Van \$3995

'81 Camaro Z28 \$6499

'82 Trans Am \$9995

2 Big Locations

Airport 836-0626

Pearl City 455-1071

3149 N. Nimitz Hwy. 922 Kam Hwy.

OVERSTOCKED NEED ROOM
 '82 Trans Am (P23201) Loaded auto incl glass top
 '82 Trans Am (ATV505) Loaded 4 spd incl glass top
 '79 Trans Am (BXC796) Loaded auto, incl glass top
 '79 Trans Am (BPF316) Loaded 4 spd incl glass top
 NON-ASSURABLE WITH HITS/DATA
 J.N. CHEVROLET/MAZDA 836-1222 2999 N. Nimitz Hwy.

TOYOTA

'74 TOYOTA Corolla, 4 dr., clean 263-4514

'78 TOYOTA Celica GT L/B AM/FM 8 track stereo, 94,000 miles, runs good, looks great. \$3200/offer. 422-7432

'79 Corolla \$1975
 4 dr. 4 spd. super clean (BV5026) J.N. CHEVROLET/MAZDA 836-1222 2999 N. Nimitz Hwy.

TRIUMPH

'80 TRIUMPH TR3 3.5L V8, 5 speed, AM/FM, A/C, new tires, one of 5 on Oahu. Excellent Condition \$9000 offer. 735-5515 after 7 pm Gordon

TOYOTA

FOR Sale! 1971 Toyota Corolla 1200cc, auto trans, 4 spd. interior, little to no rust, new radials, new muffler, extra \$850. Call 637-3102. ask for Bob

TRUMP

'80 TRIUMPH TR3 3.5L V8, 5 speed, AM/FM, A/C, new tires, one of 5 on Oahu. Excellent Condition \$9000 offer. 735-5515 after 7 pm Gordon

TRUMP

'80 TRIUMPH TR3 3.5L V8, 5 speed, AM/FM, A/C, new tires, one of 5 on Oahu. Excellent Condition \$9000 offer. 735-5515 after 7 pm Gordon

TRUMP

'80 TRIUMPH TR3 3.5L V8, 5 speed, AM/FM, A/C, new tires, one of 5 on Oahu. Excellent Condition \$9000 offer. 735-5515 after 7 pm Gordon

TRUMP

'80 TRIUMPH TR3 3.5L V8, 5 speed, AM/FM, A/C, new tires, one of 5 on Oahu. Excellent Condition \$9000 offer. 735-5515 after 7 pm Gordon

TRUMP

'80 TRIUMPH TR3 3.5L V8, 5 speed, AM/FM, A/C, new tires, one of 5 on Oahu. Excellent Condition \$9000 offer. 735-5515 after 7 pm Gordon

TRUMP

'80 TRIUMPH TR3 3.5L V8, 5 speed, AM/FM, A/C, new tires, one of 5 on Oahu. Excellent Condition \$9000 offer. 735-5515 after 7 pm Gordon

TRUMP

'80 TRIUMPH TR3 3.5L V8, 5 speed, AM/FM, A/C, new tires, one of 5 on Oahu. Excellent Condition \$9000 offer. 735-5515 after 7 pm Gordon

TRUMP

'80 TRIUMPH TR3 3.5L V8, 5 speed, AM/FM, A/C, new tires, one of 5 on Oahu. Excellent Condition \$9000 offer. 735-5515 after 7 pm Gordon

TRUMP

'80 TRIUMPH TR3 3.5L V8, 5 speed, AM/FM, A/C, new tires, one of 5 on Oahu. Excellent Condition \$9000 offer. 735-5515 after 7 pm Gordon

TRUMP

'80 TRIUMPH TR3 3.5L V8, 5 speed, AM/FM, A/C, new tires, one of 5 on Oahu. Excellent Condition \$9000 offer. 735-5515 after 7 pm Gordon

TRUMP

'80 TRIUMPH TR3 3.5L V8, 5 speed, AM/FM, A/C, new tires, one of 5 on Oahu. Excellent Condition \$9000 offer. 735-5515 after 7 pm Gordon

TRUMP

