

WOMEN'S TENNIS

INFORMATION GUIDE



2021-22 UCLA WOMEN'S TENNIS

2022 QUICK FACTS

Location	Los Angeles, CA
Athletic Dept. Address	325 Westwood Plaza Los Angeles, CA 90095
Athletics Phone	(310) 825-8699
Women's Tennis Office Phone	(310) 206-6787
Chancellor	Dr. Gene Block
Director of Athletics	Martin Jarmond
Sr. Women's Administrator	Dr. Christina Rivera
Assoc. Athletic Director (Tennis)	Chris Carlson
Faculty Athletic Rep.	Dr. Michael Teitell
Home Court (Capacity)	Los Angeles Tennis Center (10,000+)
Enrollment	43,239
Founded	1919
Colors	Blue and Gold
Nickname	Bruins
Conference	Pac-12
National Affiliation	NCAA Division I
Head Coach	Stella Sampras Webster (UCLA '91)
Career Record (Years)	475-171 (25)
Associate Head Coach	Rance Brown
Volunteer Assistant Coach	Giancarlo "GC" Cava
2021 Record	22-5
2021 Pac-12 Record (Finish)	10-0 (1st)
2021 NCAA Tournament	T-5th
2021 Final National Ranking	5
NCAA Championships	2 (2008, 2014)
All-Time NCAA Tournament Appearances (Last)	39 (2021)
All-Time Conference Championships (Last)	5 (2021)

TABLE OF CONTENTS

The 2021-22 Bruins

Radio / TV Roster	2
Roster	3
Coaching Staff	4
Player Profiles - Senior Class	6
Player Profiles - Junior Class	8
Player Profiles - Sophomore Class	11
Player Profiles - Freshman Class	12

2020-21 Season in Review

2020-21 Records & Honors	14
2021 Results	15

History / Records

All-Time Letterwinners	18
Record vs. Opponents	19

Head-Coaching History	19
Award Winners	20
National Championships	21
All-Time Results (1986-2021)	22
NCAA Tournament Results (1982-85)	26
Record vs. Opponents in NCAA Play	27
NCAA Seed History	27
NCAA Tournament Year-by-Year	27
Bruins on the WTA Tour	28
Miscellaneous Singles Records	28
Los Angeles Tennis Center	29

General Information

Administrator Biographies	30
Women's Tennis Support Staff	30
Media Information	31



2022 SCHEDULE

Date	Opponent	Location	Time (PT)
Jan. 21	Loyola Marymount	Los Angeles Tennis Center	1:30 pm
Jan. 28	Cai Poly@	Los Angeles Tennis Center	1 pm
Jan. 29	Denver/Washington@	Los Angeles Tennis Center	10 am/1 pm
Feb. 4	UC Santa Barbara	Los Angeles Tennis Center	1:30 pm
Feb. 5	at Pepperdine	Malibu, Calif.	12 pm
Feb. 11-14	ITA National Team Indoor Championships	Madison, Wis.	TBD
Feb. 21	California	Los Angeles Tennis Center	12 pm
Feb. 25	USC	Los Angeles Tennis Center	1:30 pm
March 4	at Colorado*	Boulder, Colo.	12 pm
March 6	at Utah*	Salt Lake City, Utah	12:30 pm
March 11	Arizona*	Los Angeles Tennis Center	1:30 pm
March 12	Arizona State*	Los Angeles Tennis Center	12 pm
March 25	at California*	Berkeley, Calif.	1:30 pm
March 26	at Stanford*	Stanford, Calif.	12 pm
April 1	Washington*	Los Angeles Tennis Center	1:30 pm
April 2	Washington State*	Los Angeles Tennis Center	12 pm
April 6	Pepperdine	Los Angeles Tennis Center	1:30 pm
April 8	Oregon*	Los Angeles Tennis Center	1:30 pm
April 15	at USC*	Los Angeles, Calif.	1:30 pm
April 20-23	Pac-12 Championships	Ojai, Calif.	TBD
May 6-7	NCAA First and Second Rounds	TBD	TBD
May 13/14	NCAA Super Regionals	TBD	TBD
May 19-22	NCAA Team Championships	Urbana, Ill.	TBD
May 23-28	NCAA Individual Championships	Urbana, Ill.	TBD

Home matches in **bold** / @ ITA Kickoff Weekend / * Pac-12 Conference match

MEDIA INFORMATION

Tennis Contact: Andrew Sinatra
Phone: 310-206-8141
Fax: 310-825-8664
E-mail: asinatra@athletics.ucla.edu
Address: 325 Westwood Plaza
Los Angeles, CA 90095



Note: Student-athletes have been instructed not to grant any interview requests that have not been set up through the UCLA Athletic Communications Office.

uclaBruins.com

RADIO / TV ROSTER



Elysia
BOLTON
5-9/Sr.
Cold Spring Harbor, N.Y.



Ava
CATANZARITE
5-4/Fr.
Pittsburgh, Pa.



Abbey
FORBES
5-9/Jr.
Raleigh, N.C.



Caroline
GOLDBERG
5-8/Jr.
Pacific Palisades, Calif.



Kimmi
HANCE
5-7/Fr.
Torrance, Calif.



Taylor
JOHNSON
5-10/Sr.
Prescott, Ariz.



Vanessa
ONG
5-6/So.
Oklahoma City, Okla.



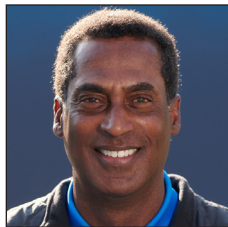
Sasha
VAGRAMOV
5-10/Jr.
Port Moody, BC, Canada



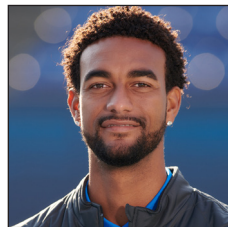
Elise
WAGLE
5-8/Fr.
Niskayuna N.Y.



Stella
SAMPRAS WEBSTER
Head Coach



Rance
BROWN
Associate Head Coach



Errol
SMITH
Volunteer Assistant Coach



Lasya
GUDIPUDI
Director of Operations

ALPHABETICAL ROSTER

Name	Ht.	Yr.	Hometown (High School/College)
Elysia Bolton	5-9	Sr.	Cold Spring Harbor, N.Y. (Laurel Springs School)
Ava Catanzarite	5-4	Fr.	Pittsburgh, Pa. (Pennsylvania Cyber Charter School)
Abbey Forbes	5-9	Jr.	Raleigh, N.C. (Laurel Springs School)
Caroline Goldberg	5-8	Jr.	Pacific Palisades, Calif. (Palisades Charter HS)
Kimmi Hance	5-7	Fr.	Torrance, Calif. (Palos Verdes Peninsula HS)
Taylor Johnson	5-10	Sr.	Prescott, Ariz. (Connections Academy)
Vanessa Ong	5-6	So.	Oklahoma City, Okla. (Laurel Springs School)
Sasha Vagramov	5-10	Jr.	Port Moody, BC, Canada (Argyle Secondary School)
Elise Wagle	5-8	Fr.	Niskayuna, N.Y. (Laurel Springs School)

PRONUNCIATION GUIDE

Elysia Bolton eh-LEASH-uh
Ava Catanzarite cuh-TAN-zuh-rite
Sasha Vagramov VAG-ruh-moff
Elise Wagle eh-LEE-suh WAH-glee

TEAM STAFF

Head Coach: Stella Sampras Webster (26th Year, UCLA, '91)
Associate Head Coach: Rance Brown (25th Year)
Volunteer Asst. Coach: Errol Smith (1st Year, Loyola Marymount, '18)
Director of Operations: Lasya Gudipudi
Staff Athletic Trainer: Ruth Carmona

ROSTER BREAKDOWN

Height

5-10 Johnson
..... Vagramov
5-9 Bolton
..... Forbes
5-8 Goldberg
..... Wagle
5-7 Hance
5-6 Ong
5-4 Catanzarite

Class

Freshmen (3): Catanzarite, Hance, Wagle
Sophomores (1): Ong
Juniors (2): Forbes, Goldberg, Vagramov
Seniors (2): Bolton, Johnson

State

California (2): Goldberg, Hance
Arizona (1): Johnson
New York (2): Bolton, Wagle
North Carolina (1): Forbes
Oklahoma (1): Ong
Pennsylvania (1): Catanzarite

International

Canada (1): Vagramov



Back row (left to right): Vanessa Ong, Kimmi Hance, associate head coach Rance Brown, head coach Stella Sampras Webster, volunteer assistant coach Errol Smith, Elise Wagle, Ava Catanzarite. Front row (left to right): Taylor Johnson, Elysia Bolton, Sasha Vagramov, Caroline Goldberg, Abbey Forbes.



STELLA SAMPRAS WEBSTER

Head Coach
26th Season
UCLA '91

Head coach Stella Sampras Webster enters her 26th season at the helm of the UCLA women's tennis program in 2021-22, compiling an impressive overall record of 475-171 (.735). Sampras Webster is only the third head coach in UCLA women's tennis history, following legendary coaches Bill Zaima (1972-76, 1986-96) and Gayle Godwin (1977-86). The second-longest-tenured active coach at UCLA, she has led the women's tennis program to both of its NCAA team championships.

Sampras Webster and the Bruins captured the 2014 NCAA title in Athens, Ga. with a thrilling 4-3 victory over North Carolina in the final. It marked the 111th NCAA championship for UCLA, as the Bruins finished the 2014 campaign with a 27-2 overall record, which included a 9-1 mark in the highly-competitive Pac-12 Conference. UCLA did not surrender the doubles point in any match that year, going a perfect 29-0 in doubles play. The 2014 season marked the second NCAA championship for Sampras Webster, as she also led UCLA to the title in 2008. UCLA's 2008 title was the first NCAA championship for the program, following up on the team's 1981 AIAW national crown.

The 2012 ITA National Coach of the Year, Stella Sampras Webster is also responsible for helping UCLA to its first Pac-10 championship in 2008, as the Bruins ended the conference season with a 7-1 record that year. For her efforts, she was named Pac-10 Coach of the Year at the end of the season.

Few college coaches can match Sampras Webster's ability to continually put their teams in the title hunt year in and year out. Prior to her first title in 2008, she also had a pair of second-place finishes at the NAAs in 2004 and 2007. In all, Sampras Webster's teams have finished in the top 10 at the NCAA Championships in 21 of her 24 completed seasons in Westwood. UCLA has also finished in the top five nationally on 15 occasions (1997, 2000, 2002-04, 2007, 2008, 2011-15, 2018, 2019, 2021). The 2020 Bruins, who had their season cut short by the coronavirus pandemic, held a record of 12-1 for the best start in program history since the 2014 NCAA champions. They also matched the 2014 team in reaching the final round of the ITA National Team Indoor Championship.

The shortened-season success carried into 2021 for Sampras Webster and UCLA, which outscored conference opponents by a margin of 47 points (53-6) en route to a 10-0 record and the first outright regular-season Pac-12 championship in program history. The 2008 Bruins shared the league title with Stanford. Sampras Webster was named the Southwest Region Wilson ITA Coach of the Year for her role in guiding the 2021 team. She previously earned the same honor in 2000 and 2012.

Sampras Webster has recruited and coached some of the top players in collegiate tennis. Under her tutelage, a total of 32 players have achieved All-America status. Two of the most notable during Sampras Webster's tenure are Riza Zalameda and Robin Anderson. Zalameda was a four-time All-American and the Most Outstanding Player at the 2008 NCAA Championships. Anderson, who like Zalameda was named the Most Outstanding Player at the NAAs in 2014, also achieved All-America status each of her four years. Sampras Webster has guided five four-time All-Americans in all, with Sara Walker, Kyle McPhillips and Jada Hart rounding out the quintet.

Three Sampras Webster-coached duos have won NCAA doubles championships, including Zalameda and partner Tracy Lin in 2008. Seeded first, Zalameda and Lin did not lose a set in the tournament. Daniela Bercek and Lauren Fisher captured the initial title, overcoming an unseeded starting position in 2004. Most recently, Gabby Andrews and Ayan Broomfield accomplished the feat in 2019. The fifth-seeded pair won three third-set, 10-point tiebreakers en route to the top spot. Hart and Elysia Bolton finished atop the Oracle/ITA doubles rankings in 2020, but were unable to compete for the championship due to the shortened season.

A 1991 graduate of UCLA with a degree in psychology, Sampras Webster enjoyed a successful four-year career as a Bruin player from 1987-91 and competed on the pro

circuit for a season prior to joining Zaima's staff. An NCAA doubles champion as a freshman in 1988 with Allyson Cooper, Sampras Webster was also the NCAA doubles runner-up as a senior in 1991 with Kimberly Po. A four-time All-American, Sampras Webster was only the second player in UCLA history to obtain this status. She also won the 1989 and 1991 Pac-10 doubles championship and the 1990 Rolex Regional doubles title. Sampras Webster completed her UCLA career ranked No. 3 nationally in doubles and No. 42 in singles. Team accomplishments were most important to Sampras Webster, who helped lead the Bruins to four straight NCAA top-three finishes.

As a professional, Sampras Webster's highest international singles ranking was No. 248, and her best in doubles was No. 142. Her professional highlights include competing in both singles and doubles at the U.S. Open and Lipton Championships. She advanced to the U.S. Open second round in doubles and also competed in doubles at Wimbledon. She also won three satellite tournament titles and competed in Team Tennis for the Wichita Advantage in 1992.

Lauded for her "achievements and contributions to the game of tennis across Southern California," Sampras Webster was inducted into the Southern California Tennis Association Hall of Fame in 2017. Then, on Oct. 5, 2018, she became just the fourth active head coach to gain entry into the UCLA Athletic Hall of Fame.

Born in Potomac, Md., Sampras Webster moved to the Los Angeles area as a child and graduated from Palos Verdes High School. A top-three player in Southern California and among the top 10 in the country as a junior, Sampras Webster claimed the CIF doubles title as a freshman and the singles title as a senior in 1987. She capped her high school career by being named her school's Athlete of the Year.

The second-oldest of four children of Sam and Georgia Sampras, Stella considers the support of her entire family most significant. Younger brother Pete demonstrated his level of support for Stella and the Bruin program when he personally endowed a scholarship and assisted with the important fund-raising effort in Stella's first fall at the helm. Pete won a then-record 14 Grand Slam singles titles during his playing days, including seven Wimbledon championships.

Sampras Webster and her husband, Steve, were married on January 3, 2002 in Dana Point, Calif. They are the proud parents of twin girls Sophia and Savannah.

Career Coaching Record

Year	Overall Record	Conf. Record/Finish	NCAA Finish
1997	16-6	7-3/2nd	T-5th
1998	17-11	5-3/4th	T-9th
1999	18-8	5-3/4th	T-17th
2000	17-9	6-2/T-2nd	T-5th
2001	9-18	4-4/7th	T-9th
2002	19-5	6-2/3rd	T-5th
2003	16-11	4-4/5th	T-5th
2004	21-8	6-2/3rd	2nd
2005	17-6	6-2/3rd	T-9th
2006	15-7	5-3/4th	T-9th
2007	21-8	6-2/T-2nd	2nd
2008	24-5	7-1/T-1st	1st
2009	19-7	5-3/4th	T-9th
2010	21-4	6-1/2nd	T-9th
2011	22-6	7-1/2nd	T-3rd
2012	26-3	8-2/T-3rd	2nd
2013	20-6	7-3/4th	T-3rd
2014	27-2	9-1/2nd	1st
2015	23-5	8-2/3rd	2nd
2016	15-7	6-3/5th	T-17th
2017	14-9	7-3/T-3rd	T-17th
2018	23-6	9-1/2nd	T-5th
2019	21-8	8-2/2nd	T-5th
2020	12-1	2-0/--	Not played (COVID-19)
2021	22-5	10-0/1st	T-5th
Totals (24 yrs)	475-171 (.736)	116-30 (.779)	2 NCAA Titles



RANCE BROWN

Associate Head Coach
25th Season

Associate head coach Rance Brown enters his 25th season on the UCLA women's tennis coaching staff in 2021-22. He served as an assistant to Bill Zaima during the 1996 season, and has been Stella Sampras Webster's top assistant for 24 seasons. The 2000 and 2012 ITA National Assistant Coach of the Year, Brown was promoted to the position of associate head coach effective at the beginning of the 2008-09 season.

During Brown's tenure in Westwood, UCLA has continually been among the top teams in the nation. In addition to NCAA titles in 2008 and 2014, the Bruins have finished runner-up at the NCAA Championships four times (2004, 2007, 2012 and 2015). The Bruins have made the NCAA tournament in each of his 23 completed seasons as an assistant. The 2020 team, led by the top-ranked doubles tandem of Elysia Bolton and Jada Hart, went 12-1 and reached the final round of the ITA National Team Indoor Championship in the coronavirus-shortened season. The next year, UCLA went 10-0 in regular-season conference play, outscoring opponents by a 53-6 margin en route to the program's first outright Pac-12 championship.

Brown has especially excelled in the area of recruiting, bringing in a number of highly-ranked junior players to the program over the years. He was also instrumental in the success of NCAA singles champion Keri Phebus, who became the first women's tennis player inducted into the UCLA Athletics Hall of Fame in 2007. Three NCAA doubles championships have also been won during his time, with 2019 titleholders Gabby Andrews and Ayan Broomfield recently following in the footsteps of Tracy Lin/Riza Zalameda (2008) and Daniela Bercek/Lauren Fisher (2004).

Brown has been named the ITA Southwest Region Assistant Coach of the Year on five occasions (1999, 2000, 2007, 2010 and 2012). A total of 31 All-American Bruins have been named over the course of his tenure.

Brown spent the summer of 2008 as the coach of the USTA Summer Collegiate Team, traveling to professional tournaments with some of the top women's college players in the nation. He also guided USA Team's contingent of Bruins at the 2015 Summer Universiade (World University Games) in Gwangju, South Korea and the 2019 event in Naples, Italy. Brown went on to represent his home country at the 2019 Master'U BNP Paribas tournament in Grenoble, France, where he served as an assistant coach for the title-winning Americans.

In addition to his efforts with the UCLA program, Brown was among the first graduating classes of the USTA High Performance Coaches' Program. He also worked at the Riviera Country Club, heading up the club's Elite Junior Tennis Program along with professional coach Erik Kortland. Prior to his appointment at Riviera, Brown headed up one of the most successful junior tennis programs in the country, serving as Director of Tennis at the Newport Beach Marriott Hotel and Tennis Club in Orange County for more than 20 years.

Brown received his Associate of Arts degree from Golden West Junior College, where he played for two years. He helped lead the team to two conference team titles and notched one conference doubles title. He played the 1981 season at Long Beach State and competed professionally at Challenger Level tournaments before devoting his time to coaching.



ERROL SMITH

Volunteer Assistant Coach
First Season
Loyola Marymount '18

Errol Smith made the UCLA women's program the latest stop on his Los Angeles tennis tour when he was named volunteer assistant coach on Stella Sampras Webster's staff Oct. 14, 2021.

A born-and-raised Angeleno, Smith starred for Bishop Montgomery HS in Torrance, Calif. before taking his talents to Loyola Marymount University, where he spent four seasons until graduating in 2018. He then embarked on a professional career and has since been a regular on the ITF Tennis Tour.

Smith's best result on tour thus far came soon after his graduation from LMU, when he advanced through qualifying to reach the singles semifinal round at the Tunisia F33 Futures event in 2018. He logged quarterfinal-round showings at the M15 Cancun and M25 Iowa City, IA stops in 2019. On the doubles side, Smith made the M15 Monastir semifinals in 2019 and has four quarterfinal-round finishes.

Standing 6-6, Smith turned in 15 or more singles wins during each of the three seasons he suited up for the Lions and posted a 48-33 overall record. He went 34-30 in doubles play. Smith redshirted in 2016-17.

Coming off the missed campaign, Smith closed his collegiate career in impressive fashion. He went 15-6 in singles matches and registered an 11-4 doubles mark as the 2017-18 team went 19-6 to give the LMU its highest single-season win total since establishing a program record in 2002. Smith twice garnered West Coast Conference (WCC) Singles Player of the Week accolades and was once tabbed the league's Doubles Team of the Week, with partner Diego Nava, in 2018.

Smith collected a career-high 18 singles wins in 2016, with a majority of his dual-match decisions coming on Court 2. He received All-WCC Second Team Singles recognition as a result. Smith also had 11 doubles victories across tournament and dual-match competitions. Nearly all his dual-match doubles contests occurred on the top court.

Smith was named the 2015 WCC Freshman of the Year after he recorded a 15-11 singles record and added a dozen doubles triumphs. He exclusively occupied the top two singles spots and was most frequently slotted on the top doubles court. Smith made the All-WCC Singles Honorable Mention list.

Smith's father, also named Errol, reached No. 96 in the ATP singles rankings under his middle name, Roger. A native of The Bahamas, Roger regularly partnered in doubles play with fellow countryman Mark Knowles, who was a standout at UCLA from 1990-92. Roger played collegiately at Ohio State from 1982-86, totaling a then-program-record 204 singles wins.



Seniors Taylor Johnson and Elysia Bolton



ELYSIA BOLTON

5-9 / Senior
Cold Spring Harbor, N.Y.
Laurel Springs School

UCLA CAREER HIGHLIGHTS

- 3-time ITA All-America selection - 2021 (doubles), 2020 (singles, doubles), 2019 (singles)
- Pac-12 Freshman/Newcomer of the Year (2019)
- ITA National Player to Watch (2020)
- ITA Southwest Region Player to Watch (2020)
- ITA Southwest Region Rookie of the Year (2019)
- All-Pac-12 honoree (First Team - 2019)
- 3-time Pac-12 Player of the Week (last Feb. 4, 2021)
- ITA Indoors All-Tournament selection (Doubles No. 1 w/ Jada Hart – 2020)
- ITA Scholar-Athlete (2020)
- 2-time Pac-12 Spring Academic Honor Roll member (2020, 2021)
- 6-time Athletic Director's Honor Roll member (last Spring 2021)
- Career-high Oracle/ITA singles ranking: 9 (twice, last Jan. 13, 2021)
- Career-high Oracle/ITA doubles ranking: 1 (3 times, last Jan. 13, 2021 w/ Jada Hart)

2020-21

10-4 singles record (all dual matches) ... 14-5 doubles mark (12-4 in dual matches) ... Bruins captured Pac-12 regular-season championship outright for first time in program history ... team did not compete during fall ... with partner Jada Hart, reached quarterfinal round of NCAA Championships doubles tournament, defeating No. 22 Estela Perez-Somarriba/Isabella Pfennig of Miami and No. 1 Fiona Arrese/Akville Paražinskaitė of Kentucky ... finished No. 118 in Oracle/ITA singles rankings (June 2) and reached season-high No. 9 (Jan. 13) ... with Hart, finished No. 28 in Oracle/ITA doubles rankings (June 2) and reached season-high No. 1 (Jan. 13) ... achieved ITA All-America status for doubles ... earned spot on Pac-12 Spring Academic Honor Roll ... posted majority of singles decisions on Court 3 (6-3); also finished on Courts 1 (0-1) and 2 (4-0) ... majority of completed doubles matches came on Court 3 (8-2); also finished on Court 1 (4-2) ... earned Pac-12 Player of the Week award (Feb. 4) after being on court for first and final points of 4-0 win versus Texas A&M in ITA Kickoff Weekend championship match; with Hart, beat No. 39 Jayci Goldsmith/Tatiana Makarova, 6-2, to clinch doubles point ... went 3-2 versus nationally-ranked singles opponents, includ-

ing 6-2, 6-3 win against No. 26 Valentina Ivanov of No. 19 California in ITA Kickoff Weekend first round (Jan. 24) ... posted four match-clinching points, including 6-2, 4-6, 7-6(3) decision over No. 12 Shiori Fukuda of No. 5 Pepperdine at ITA National Team Indoor Championships (Feb. 7) ... with Hart, went 4-2 versus nationally-ranked doubles opponents, including 6-1 victory against No. 53 Anna Bright/Julia Rosenqvist of No. 19 California in ITA Kickoff Weekend first round (Jan. 24) ... with partner Abi Altick, clinched three doubles points, including 7-5 decision over Jada Bui/Erin Richardson of No. 27 California in final round at Pac-12 Championships (April 26); also secured two doubles points with Hart and one each with partners Vanessa Ong and Sasha Vagramov ... with Altick, Hart and Ong, won nine consecutive doubles decisions from April 14-May 25 ... named to Athletic Director's Honor Roll for Fall 2020, Winter 2021, Spring 2021.

2019-20

11-5 singles record in shortened season (6-3 in dual matches) ... 18-3 doubles mark (10-1 in dual matches) ... with partner Jada Hart, defeated No. 1 Anna Rogers/Alana Smith of NC State, 6-4, 6-3, to claim doubles title at Oracle/ITA National Fall Championships (Nov. 10) ... finished season-high No. 9 in Oracle/ITA singles rankings (March 3) ... with Hart, finished and twice reached No. 1 in Oracle/ITA doubles rankings (Feb. 18, March 3) ... achieved ITA All-America status for singles, doubles ... named ITA National Player to Watch ... tabbed ITA Southwest Region Player to Watch ... named ITA Scholar-Athlete ... earned spot on Pac-12 Spring Academic Honor Roll ... posted majority of singles decisions on Court 1 (5-3); also finished on Court 2 (1-0) ... majority of completed doubles matches came on Court 1 (9-1); also finished on Court 3 (1-0) ... with Hart, selected to ITA National Team Indoor Championships All-Tournament Team (doubles No. 1) after earning wins versus Emilee Duong/Josie Frazier of Illinois, No. 15 Victoria Allen/Petra Hule of No. 9 Florida State, No. 25 Emily Arbuthnot/Angelica Blake of No. 1 Stanford and No. 6 Sara Daavettila/Alexa Graham of No. 2 North Carolina ... earned Pac-12 Player of the Week award (Feb. 4) after posting 4-0 record across singles, doubles matches — including 6-4, 6-3 defeat of No. 15 Mariia Kozyreva of Saint Mary's — to aid sweep of SMC, UC Santa Barbara ... went 6-4 versus nationally-ranked singles opponents, including 6-7(5), 6-2, 6-2 defeat of No. 13 Haley Giavara of No. 45 California (Feb. 21) ... with Hart, went 7-1 versus nationally-ranked doubles opponents, including 6-0, 6-4 win versus No. 11 Lauren Alter/Tatum Rice of Arkansas to reach semifinal round at Oracle ITA National Fall Championships (Nov. 8); also beat No. 11 Alter/Rice, 8-2, to reach doubles consolation final round at ITA All-American Championships (Oct. 12) ... with Hart, defeated No. 19 Arbuthnot/Blake of No. 9 Stanford, 6-1, to clinch doubles point (March 7) ... took down No. 25 Angela Kulikov of No. 31 USC, 6-3, 6-2 (Feb. 28) ... with partners Hart and Sasha Vagramov, won 12 consecutive doubles decisions from Nov. 6-Feb. 10 ... topped No. 31 Paola Exposito Diaz-Delgado of VCU, 6-4, 6-1, to reach singles third round at Oracle ITA National Fall Championships (Nov. 7) ... knocked off No. 37 Vivian Wolff of Georgia, 6-3, 7-5, to reach singles quarterfinal round at ITA All-American Championships (Oct. 11) ... named to Athletic Director's Honor Roll for Winter 2020.

2018-19

28-14 singles record (16-8 in dual matches) ... 32-10 doubles mark (20-6 in dual matches) ... logged team highs in total wins, singles wins and dual-match singles wins ... reached third round of NCAA Championships singles tournament, defeating No. 30 McCartney Kessler of Florida and No. 38 Anna Turati of Texas ... with partner Jada Hart, reached second round of NCAA Championships doubles tournament, defeating No. 9 Sadie Hammond/Kaitlin Staines of Tennessee ... finished No. 29 in Oracle/ITA singles rankings (May 29) and reached season-high No. 10 (March 5) ... with Hart, finished No. 12 in Oracle/ITA doubles rankings (May 29) and twice reached season-high No. 11 (April 2, May 1) ... achieved ITA All-America status for singles ... Pac-12 Freshman/Newcomer of the Year ... named ITA Southwest Region Rookie of the Year ... First-Team All-Pac-12 honoree ... posted majority of singles decisions on Court 2 (13-8); also finished on Court 1 (3-0) ... majority of completed doubles match came on Court 2 (18-3); also finished on Courts 1 (2-2) and 3 (0-1) ... earned Pac-12 Player of the Week award (Feb. 5) after posting unbeaten singles (2-0) and doubles (2-0) records and clinching two road wins, one doubles point ... went 12-8 versus nationally-ranked singles opponents, including 6-3, 6-3 win versus No. 20 Olivia Hauger of No. 24 California (Feb. 24) ... posted three match-clinching points, including 7-5, 6-4 decision over Bunyawit Thamchaiwat of No. 9 Oklahoma State (Feb. 2) ... with Hart, went 8-7 versus nationally-ranked doubles opponents, including 6-1 defeat of No. 12 Makenna Jones/Cameron Morra of No. 1 North Carolina in quarterfinal round at NCAA Championships (May 17) ... with Hart, clinched seven doubles points, including 6-3 result over No. 4 Angela Kulikov/Rianna Valdes of No. 15 USC (April 20) ... beat No. 38 Paige Cline of No. 15 South Carolina, 7-5, 6-3, at ITA Team Indoor Championships (Feb. 8); match ended in 4-3 score ... with Hart, won 11 consecutive doubles decisions from March 24-April 26 ... knocked off No. 3 Estella Perez-Somarriba of Miami, 6-3, 6-2, to reach singles quarterfinal round at Oracle ITA National Fall Championships (Nov. 9) ... defeated No. 41 Evgeniya Levashova of Pepperdine, 6-1, 4-6, 6-2, to reach singles semifinal round at ITA Southwest Regional Championships (Oct. 21) ... beat No. 27 Sara Daavettila of North Carolina, 7-6(4), 6-2, to reach singles quarterfinal round at Oracle ITA Masters (Sept. 21) ... earned first-career singles victory with 6-7(7), 6-4, 6-2 decision over Margita Sunjic of Western Kentucky to reach second round at Oracle ITA Masters (Sept. 20) ... named to Athletic Director's Honor Roll for Fall 2018, Spring 2019.

PRIOR TO UCLA

Graduated from Laurel Springs School ... Blue-Chip recruit according to TennisRecruiting.net; reached No. 1 in 2018 ... career-high ITF junior ranking: 22 (Jan. 29, 2018) ... career-high WTA singles ranking: 682 (Aug. 6, 2018) ... participated in each junior Grand Slam tournament; made runs to quarterfinal rounds at 2017 US Open Junior Tennis Championships in both singles and doubles competitions ... claimed Evansville ITF singles title in 2018 ... reached Girls' 18 singles semifinal at 2017 USTA International Spring Championships in Carson, Calif., where she defeated two Top-100 opponents ... garnered Girls' 18 doubles championships at 2017 Banana Bowl and 2016 Easter Bowl ... took Girls' 18 doubles title at 2016 USTA National Clay Court Championship in Memphis, Tenn. ... seized Coral Gables ITF (Copa Badia) Girls' 18 singles title in 2016; also reached Girls' 18 final-round match ... has earned array of gold, silver and bronze balls at various USTA national championships ... won Girls' 16 doubles title at 2014 USTA National Winter Championships in Scottsdale, Ariz. ... represented United States at Les Petits As (Tarbes, France) and World Junior Tennis Finals (Prostejov, Czech Republic) in 2014; reached semifinal round at Les Petits As.

PERSONAL

Daughter of Darren and Karen ... has one younger sister, Sarah, who represented United States in track and field at 2018 International Wheelchair & Amputee Sports Youth World Games in Athlone, Ireland and hopes to participate in Paralympic Games ... born in Sydney, NSW, Australia ... decided to attend UCLA because of "its amazing coaches and facilities," the exclusively-outdoor training, its proximity to USTA Training Center - West in Carson, Calif. and the academic opportunities it provides ... describes her greatest athletic thrills to date as winning first-round singles match at Junior Wimbledon and capturing professional singles title at Evansville ITF in front of family ... admires Roger Federer, Rafael Nadal, Kim Clijsters and baseball player Kris Bryant ... hobbies and interests include cooking, skiing and doing puzzles ... political science major.

Year	Career Singles Record			Career Doubles Record		
	Duals	Tournaments	Overall	Duals	Tournaments	Overall
2018-19	16-8	12-6	28-14	20-6	12-4	32-10
2019-20	6-3	5-2	11-5	10-1	8-2	18-3
2020-21	10-4	0-0	10-4	12-4	2-1	14-5
Totals	32-15	17-8	49-23	42-11	22-7	64-18



TAYLOR JOHNSON

5-10 / Senior
Prescott, Ariz.
Connections Academy

UCLA CAREER HIGHLIGHTS

- ITA Indoors All-Tournament selection (Doubles No. 3 w/ Abi Altick - 2021)
- 3-time ITA Scholar-Athlete (2019-2021)
- 2-time Pac-12 Spring Academic Honor Roll member (2020, 2021)
- 8-time Athletic Director's Honor Roll member (last Spring 2021)
- Career-high Oracle/ITA doubles ranking: 37 (Sept. 17, 2019 w/ Abi Altick)

2020-21

5-1 singles record (all dual matches) ... 8-4 doubles mark (all dual matches) ... Bruins captured Pac-12 regular-season championship outright for first time in program history ... team did not compete during fall ... named ITA Scholar-Athlete ... earned spot on Pac-12 Spring Academic Honor Roll ... singles decisions came exclusively on Court 6 ... majority of completed doubles matches came on Court 3 (7-4); also finished on Court 2 (1-0) ... with partner Abi Altick, selected to ITA National Team Indoor Championships All-Tournament Team (doubles No. 3) after earning wins versus Charlotte Chavatipon/Marta Perez Mur of No. 3 Texas and Taisiya Pachkaleva/Lisa Zaar of No. 5 Pepperdine; latter clinched doubles point ... with Altick, clinched two doubles points, including 6-3 decision over Abigail Desiatnikov/Jordan McBride of San Diego (Feb. 13) ... named to Athletic Director's Honor Roll for Fall 2020, Winter 2021.

2019-20

8-5 singles record in shortened season (1-0 in dual matches) ... 12-5 doubles mark (5-2 in dual matches) ... with partner Abi Altick, reached season-high No. 37 in Oracle/ITA doubles rankings (Sept. 16) ... named ITA Scholar-Athlete ... earned spot on Pac-12 Spring Academic Honor Roll ... posted singles decision on Court 6 ... majority of completed doubles matches came on Court 2 (4-1); also finished on Court 3 (1-1) ... defeated Juliet Zhang, 6-2, 6-3, to clinch win versus Minnesota in ITA Kick-Off Weekend first round (Jan. 24) ... with Altick, clinched two doubles points, including 6-2 result over Sasha Hill/Emmanuelle Salas of No. 9 Florida State at ITA National Team Indoor Championships (Feb. 8) ... with partner Abbey Forbes, defeated Anna Bright/Alexis Nelson of No. 45 California, 6-2, to clinch doubles point (Feb. 21) ... with Altick, beat Eryn Cayetano/Danielle Willson of USC, 6-4, 6-2, to reach doubles final round at ITA Southwest Regional Championships (Oct. 21) ... named to Athletic Director's Honor Roll for Fall 2019, Winter 2020, Spring 2020.

2018-19

11-10 singles record (6-8 in dual matches) ... 17-4 doubles mark (14-3 in dual matches) ... with partner Abi Altick, finished No. 86 in Oracle/ITA doubles rankings and reached season-high 82 (May 1) ... named ITA Scholar-Athlete ... posted singles decisions on Courts 5 (5-2) and 6 (1-6) ... majority of completed doubles matches came on Court 3 (13-3); also finished on Court 2 (1-0) ... beat Camila Tumosa, 6-3, 6-2, to clinch win versus Loyola Marymount in ITA Kick-Off Weekend championship match (Jan. 27) ... with Altick, beat No. 51 Melissa Lord/Niluka Madurawe of No. 5 Stanford, 6-3, in final round at Pac-12 Championships (April 27) ... clinched team-high eight doubles points with Altick, including 7-6(6) winner-take-all decision over Sara Daavettila/Alle Sanford of No. 1 North Carolina in quarterfinal round at NCAA Championships (May 17); also secured one doubles point with partner Alaina Miller ... with Miller, defeated Solymar Colling/Maria-Paula Torres of San Diego, 6-1, to reach doubles final round at National Collegiate Tennis Classic (Nov. 12) ... named to Athletic Director's Honor Roll for Winter 2019, Spring 2019.

PRIOR TO UCLA

Graduated from Connections Academy ... Blue-Chip recruit according to TennisRecruiting.net; reached No. 1 in 2017 and 2018 ... reached doubles quarterfinal round at each of four Grand Slam junior tournaments ... claimed Girls' 18 singles title at 2018 Southern California Junior Sectional Championships (Level 1) in Fountain Valley, Calif. ... took singles title at 2018 USTA National Hard Court Championships in San Diego ... won doubles title at 2017 USTA Billie Jean King Girls' 18 National Championships in San Diego to earn automatic bid into US Open ... posted runner-up finish in Girls' 18 doubles competition at 2017 Easter Bowl in Indian Wells, Calif. ... Girls' 18 singles finalist at 2017 USTA

International Spring Championships in Carson, Calif. ... notched runner-up result in Girls' 18 doubles tournament at 2016 USTA International Spring Championships in Carson, Calif. ... claimed Girls' 16 singles title at 2015 Henry Talbert Junior Championships (SCTA Level 1) in Palm Desert, Calif. ... posted USTA National Selection Tournament championship performances in February (Girls' 14 doubles) and November (Girls' 16 singles) of 2014 ... took Girls' 14 singles title at 2014 Southern California Junior Sectional Championships in Fountain Valley, Calif. ... veteran of ITF tournaments, including Girls' 18 doubles wins at International Grass Court Championships (2015), EvertAmerican (2014) and Atlanta (2014).

PERSONAL

Daughter of Randy and Trynna ... has two older brothers, Steven (Moore) and Travis, and one older sister, Rachel (Moore) ... decided to attend UCLA because she loved the tennis program and everything it presented, while the proximity of its campus and athletic facilities gave her "everything [she] wanted" ... describes her greatest athletic thrill to date as recording first-round, three-set win at 2016 US Open Junior Championships in front

of crowd of supporters ... admires Billie Jean King and former basketball player Kobe Bryant ... hobbies and interests include cooking, reading, going to the beach, playing with her dog, hanging with friends and family and photography ... is a fan of music artists from past decades like Frank Sinatra and The Beatles ... father was drafted by NBA's San Diego Clippers and played professional basketball in Europe, while mother was an all-state track performer in high school and uncles played football at Arizona State and Kansas ... communications major.

Year	Career Singles Record			Career Doubles Record		
	Duals	Tournaments	Overall	Duals	Tournaments	Overall
2018-19	6-8	5-2	11-10	14-3	3-1	17-4
2019-20	1-0	7-5	8-5	5-2	7-3	12-5
2020-21	5-1	0-0	5-1	8-4	0-0	8-4
Totals	12-9	12-7	24-16	27-9	10-4	37-13



Juniors Caroline Goldberg, Sasha Vagramov and Abbey Forbes



ABBEY FORBES

5-9 / Junior
Raleigh, N.C.
Laurel Springs School

UCLA CAREER HIGHLIGHTS

- 2-time ITA All-America selection - 2021 (singles), 2020 (singles)
- Pac-12 Singles Player of the Year (2021)
- Pac-12 Doubles Team of the Year (2021 w/ Jada Hart)
- ITA Southwest Region Rookie of the Year (2020)
- All-Pac-12 honoree (First Team - 2021)
- 4-time Pac-12 Player of the Week (last April 20, 2021)
- ITA Scholar-Athlete (2020)
- Pac-12 Spring Academic Honor Roll member (2021)
- 6-time Athletic Director's Honor Roll member (last Spring 2021)
- Career-high Oracle/ITA singles ranking: 2 (Sept. 7, 2021)
- Career-high Oracle/ITA doubles ranking: 51 (March 24, 2021 w/ Jada Hart)

2020-21

24-3 singles record (21-2 in dual matches) ... 13-2 doubles mark (all dual matches) ... logged team highs in total wins, singles wins and dual-match singles wins ... Bruins

captured Pac-12 regular-season championship outright for first time in program history ... team did not compete during fall ... reached quarterfinal round of NCAA Championships singles tournament, defeating No. 39 Chloe Beck of Duke, No. 18 Irina Cantos Siemers of Ohio State and No. 33 Emma Antonaki of Mississippi State ... finished season-high No. 4 in Oracle/ITA singles rankings (June 2) ... with partner Jada Hart, finished No. 79 in Oracle/ITA doubles rankings (June 2) and reached season-high No. 51 (March 24) ... achieved ITA All-America status for singles ... Pac-12 Singles Player of the Year ... Pac-12 Doubles Team of the Year with Hart ... First-Team All-Pac-12 honoree ... earned spot on Pac-12 Spring Academic Honor Roll ... posted majority of singles decisions on Court 1 (20-2); also finished on Court 2 (1-0) ... majority of completed doubles matches came on Court 1 (11-2); also finished on Courts 2 (1-0) and 3 (1-0) ... collected conference-high three Pac-12 Player of the Week awards (March 16, April 12, April 20) ... went 18-3 versus nationally-ranked singles opponents, including 6-1, 6-4 win against No. 1 Ashley Lahey of No. 4 Pepperdine (March 12); went 3-0 versus Lahey ... posted two match-clinching points, including 6-2, 6-3 decision over No. 65 Salma Ewing of No. 36 USC (April 16) ... with Hart, clinched four doubles points, including 6-3 winner-take-all result over Haley Giavara/Valentina Ivanov of California (April 10); also secured one doubles point with partner Abi Altick ... won 15 consecutive singles decisions and 21 of 22 from Feb. 13-April 25/May 25, including 6-3, 6-1 decision over No. 5 Kenya Jones of No. 11 Georgia Tech in round of 16 at NCAA Championships (May 16) ... beat No. 5 Anna Turati of No. 3 Texas, 7-5, 6-1, at ITA National Team Indoor Championships (Feb. 6) ... named to Athletic Director's Honor Roll for Fall 2020, Winter 2021, Spring 2021 ... collected Bruin Leadership Award at UCLA Scholar-Athlete Banquet.

2019-20

23-3 singles record in shortened season (11-1 in dual matches) ... 11-4 doubles mark (5-3 in dual matches) ... logged team highs in singles wins and dual-match singles wins ... finished No. 8 in Oracle/ITA singles rankings (March 3) and reached season-high No. 5 (Feb. 5) ... achieved ITA All-America status for singles ... named ITA Southwest Region

Rookie of the Year ... named ITA Scholar-Athlete ... posted majority of singles decisions on Court 2 (10-1); also finished on Court 1 (1-0) ... majority of completed doubles matches came on Court 2 (4-2); also finished on Court 1 (1-1) ... voted Pac-12 Player of the Week (Feb. 25) after clinching doubles point with partner Taylor Johnson and defeating No. 50 Julia Rosenqvist, 7-5, 6-4, in 7-0 win versus No. 45 California ... went 10-2 versus nationally-ranked singles opponents, including 6-3, 6-1 win versus No. 12 Cameron Morra of North Carolina to reach quarterfinal round at Oracle ITA National Fall Championships (Nov. 8) ... posted two match-clinching points, including 6-3, 6-1 decision over Eva Marie Voracek of Loyola Marymount in ITA Kick-Off Weekend championship match (Jan. 25) ... with partner Annette Goulak, clinched team high-tying three doubles points, including 6-1 result over Michaela Gordon/Janice Shin of No. 1 Stanford at ITA National Team Indoor Championships (Feb. 9) ... won nine consecutive singles decisions and 17 of 18 from Oct. 17-Nov. 8/Feb. 21, including 6-0, 6-0 result over No. 39 Livia Kraus of Baylor to reach second round at Oracle ITA National Fall Championships (Nov. 6) ... defeated No. 9 Jada Hart of UCLA, 7-6(3), 6-2, to take singles title at ITA Southwest Regional Championships (Oct. 22); took down No. 34 Salma Ewing of USC, 6-3, 6-2, to reach semifinal round (Oct. 19) ... with Goulak, beat No. 37 Johnson/Abi Altick of UCLA, 6-3, 6-4, to claim doubles title at ITA Southwest Regional Championships (Oct. 22) ... beat No. 17 Anna Turati of Texas, 6-4, 7-5, to reach singles semifinal round at Oracle ITA Masters (Sept. 27); knocked off No. 31 Paola Exposito Diaz-Delgado of VCU, 6-1, 6-1, to reach quarterfinal round (Sept. 27) ... earned first-career singles victory with 6-0, 6-0 decision over Amanda Nowak of Fairfield to reach second round at Oracle ITA Masters (Sept. 26) ... named to Athletic Director's Honor Roll for Fall 2019, Winter 2020, Spring 2020.

PRIOR TO UCLA

Graduated from Laurel Springs School ... Blue-Chip recruit according to TennisRecruiting.net; reached high of No. 2 in 2018 ... earned entry into US Open main draw by capturing Girls' 18 doubles title at 2019 USTA Billie Jean King National Championships in San Diego; reached quarterfinal round of Girls' 18 singles tournament ... gained entry into 2017, 2018 and 2019 US Open junior tournament main draws ... won doubles title at 2019 Junior Wimbledon tournament ... advanced to Girls' 18 singles and doubles rounds of 16 at 2018 USTA Billie Jean King National Championships in San Diego ... reached Girls' 18 doubles quarterfinal rounds at 2017, 2018 Easter Bowl tournaments in Indian Wells, Calif. ... advanced to Girls' 18 singles quarterfinal round at 2017 Orange Bowl Tennis Championships in Plantation, Fla. ... won doubles title at 2017 USTA Girls' 18 National Clay Court Championships in Memphis, Tenn. ... posted final-round showings at 2017 USTA Girls' 18 National Clay Court Championships (Girls' 18 singles), 2016 USTA National Winter Championships (Girls' 18 singles), 49th Easter Bowl (Girls' 16 singles - 2016) and 2015 Eddie Herr International Championships (Girls' 16 doubles) ... named to USTA Junior Leadership Team in 2017 ... earned DeWitt Redgrave III Junior Achievement Award and Ozaki/Hastings Junior Sportsmanship Award from USTA Southern Section in 2017.

PERSONAL

Full name: Abigail Theresa Lawson Forbes ... daughter of Roger and Denise (Lawson-Forbes) ... has two younger brothers, Luke and Matthew ... decided to attend UCLA because she "fell in love with the atmosphere" and wanted to be part of a program with individuals "so welcoming and driven to achieve something bigger than themselves" ... lists her greatest athletic thrill to date as winning 2019 Junior Wimbledon doubles title ... admires Serena Williams and basketball player LeBron James ... hobbies and interests include working out, Netflix, touring hometown Raleigh, N.C. with her grandparents and spending time with friends ... is first member of her family born in United States of America (parents were born in Jamaica) ... relatives include retired Canada Soccer Women's National Team goalkeeper, 2012 Olympic bronze medalist and Head of Concacaf Women's Football Karina LeBlanc, and Jonathan Linton, who played running back for NFL's Buffalo Bills from 1998-2000 ... aspires to career in developmental science ... sociology major.

Year	Career Singles Record			Career Doubles Record		
	Duals	Tournaments	Overall	Duals	Tournaments	Overall
2019-20	11-1	12-2	23-3	5-3	6-1	11-4
2020-21	21-2	3-1	24-3	13-2	0-0	13-2
Totals	32-3	15-3	47-6	18-5	6-1	24-6



CAROLINE GOLDBERG

5-8 / Junior
Pacific Palisades, Calif.
Palisades Charter HS

UCLA CAREER HIGHLIGHTS

- 2-time ITA Scholar-Athlete (2020, 2021)
- Pac-12 Spring Academic Honor Roll member (2021)
- 6-time Athletic Director's Honor Roll member (last Winter 2021)

2020-21

Did not see action during tournament or dual-match portions of schedule ... Bruins captured Pac-12 regular-season championship outright for first time in program history ... team did not compete during fall ... named ITA Scholar-Athlete ... earned spot on Pac-12 Spring Academic Honor Roll ... named to Athletic Director's Honor Roll for Fall 2020, Winter 2021, Spring 2021.

2019-20

1-2 singles record in shortened season ... named ITA Scholar-Athlete ... earned first-career singles victory with 6-3, 3-6, 1-0(7) decision over Jacqueline Tsodikova of UC Irvine in extra match at ITA Southwest Regional Championships (Oct. 19) ... named to Athletic Director's Honor Roll for Fall 2019, Winter 2020, Spring 2020.

PRIOR TO UCLA

Attended Palisades Charter HS in Pacific Palisades, Calif. ... 3-Star recruit according to TennisRecruiting.net; reached high of No. 236 in 2017 ... occupied No. 1 singles spot for varsity team during freshman and sophomore seasons ... named All-City First Team in 2015, 2016 ... Dolphins claimed CIF-Los Angeles City Section team championships in 2015, 2016 ... a veteran of USTA Zonals, posted 9-1 record for Southern California at 2017 Girls' 16 Zone Team Championships in Salt Lake City ... competed at numerous USTA Level 1 national junior championships: ITF International Spring Championships (2018), USTA Billie Jean King National Championships (2017, 2018), Easter Bowl (2014, 2016, 2017, 2019), USTA National Clay Court Championships (2013, 2015), USTA Winter National Championships (2012, 2013, 2015).

PERSONAL

Daughter of Dan and Vicky ... has one older brother, Ben ... parents attended UCLA ... brother is volunteer assistant coach for UCLA men's tennis and was student-athlete in program for five seasons ... decided to attend UCLA "because it is a world-class university offering the best in academics and athletics located in one of the greatest cities in the world" and calls the opportunity a "dream come true" ... lists her greatest athletic thrills to date as competing at multiple USTA Level 1 national junior championships and teaming with brother in mixed doubles matches ... admires golfer Jordan Spieth ... hobbies and interests include traveling and MLB's Los Angeles Dodgers ... describes herself as "lifelong UCLA fan," having attended hundreds of Bruin athletic events since birth ... aspires to career in business related to entertainment industry ... sociology major.

Year	Career Singles Record			Career Doubles Record		
	Duals	Tournaments	Overall	Duals	Tournaments	Overall
2019-20	0-0	1-2	1-2	0-0	0-0	0-0
2020-21	0-0	0-0	0-0	0-0	0-0	0-0
Totals	0-0	1-2	1-2	0-0	0-0	0-0



SASHA VAGRAMOV

5-10 / Junior
Port Moody, BC, Canada
Argyle Secondary School

UCLA CAREER HIGHLIGHTS

- Pac-12 Player of the Week (Feb. 11, 2020)
- ITA Indoors All-Tournament Selection (Singles No. 6 – 2020)
- 2-time ITA Scholar-Athlete (2020, 2021)
- Pac-12 Spring Academic Honor Roll member (2021)
- 6-time Athletic Director's Honor Roll member (last Spring 2021)
- Career-high Oracle/ITA singles ranking: 49 (Dec. 8, 2021)

2020-21

9-5 singles record (all dual matches) ... 3-1 doubles mark (all dual matches) ... Bruins captured Pac-12 regular-season championship outright for first time in program history ... team did not compete during fall ... reached season-high No. 113 in Oracle/ITA singles rankings (Jan. 13) ... named ITA Scholar-Athlete ... earned spot on Pac-12 Spring Academic Honor Roll ... posted majority of singles decisions on Court 5 (5-3); also finished on Courts 2 (2-0), 3 (1-2) and 6 (1-0) ... completed doubles matches came exclusively on Court 3 ... posted two match-clinching points, including 6-3, 6-3 decision over Summer Dvorak of No. 17 USC (Feb. 26) ... with partner Elysia Bolton, posted 7-5 winner-take-all result over Abby Amos/Talya Zandberg of Arizona to clinch doubles point (April 3) ... with partner Vanessa Ong, defeated Lindsay Hung/Jasmine Rich of Utah, 6-1, to clinch doubles point (March 19) ... named to Athletic Director's Honor Roll for Fall 2020, Winter 2021, Spring 2021.

2019-20

14-6 singles record in shortened season (9-1 in dual matches) ... 10-3 doubles mark (3-0 in dual matches) ... finished No. 113 in Oracle/ITA singles rankings (March 3) and reached season-high No. 108 (Nov. 13) ... named ITA Scholar-Athlete ... posted majority of singles decisions on Court 6 (8-1); also finished on Court 5 (1-0) ... completed doubles matches came exclusively on Court 3 ... garnered Pac-12 Player of the Week recognition (Feb. 11) after clinching each of team's three wins at ITA National Team Indoor Championships,

helping program to first title match since 2014 ... selected to ITA National Team Indoor Championships All-Tournament Team (singles No. 6) after defeating Emilee Duong of Illinois, Andrea Garcia of No. 9 Florida State and Emma Higuchi of No. 1 Stanford to clinch wins ... totaled team-high six match-clinching points, including five consecutive decisions from Feb. 7-Feb. 28 ... with partner Abi Altick, clinched two doubles points, including 6-1 result over Shakhnoza Khatamova/Tiffany Lagarde of UC Santa Barbara (Feb. 2) ... beat Jessica Zeynel, 6-2, 7-6(5), to clinch win at California (March 6); match ended in 4-3 score ... won eight consecutive singles decisions from Jan. 25-Feb. 28 ... with partners Altick, Sophie Bendetti, Elysia Bolton and Annette Goulak, won final eight doubles decisions, including 8-1 result over Gitte Heynemans/Khim Iglupas of Arizona to take title at Jack Kramer Club Collegiate Invitational (Nov. 3 with Goulak) ... earned first-career singles victory with 3-6, 6-2, 6-2 decision over Margaryta Bilokin of Duke to reach Orange Draw round of 16 at Collegiate Invitational (Oct. 3) ... named to Athletic Director's Honor Roll for Fall 2019, Winter 2020, Spring 2020.

PRIOR TO UCLA

Attended Argyle Secondary School in North Vancouver, BC, Canada ... Blue-Chip recruit according to TennisRecruiting.net; reached high of No. 9 in 2019 ... has trained with Tennis Canada since 2012 ... competed for home country Canada at 2019 Pan America Games in Lima, Peru ... beat Chloe Beck, 6-2, 6-1, in 2018 US Open junior tournament qualifying ... advanced to Girls' 18 doubles quarterfinal round at 2018 Eddie Herr International Championships ... reached Girls' 18 doubles final round at 2018 USTA International Spring Championships ... represented Canada at 2016, 2017 Junior Fed Cup in Budapest, Hungary; team reached semifinal round in 2017 ... as 14-year-old, seized singles title at 2016 U18 Indoor Rogers Junior National Championships in Markham, ON, Canada; also won singles, doubles crowns at 2017 U18 Outdoor Rogers Junior National Championships in Mississauga, ON, Canada.

PERSONAL

Full name: Alexandra Elena Vagramov ... decided to attend UCLA because it was always a dream school of hers and stood out "as a well-rounded institution that would take [her] academics and athletics to new heights" ... describes her greatest athletic thrill to date as representing home country Canada at 2019 Pan America Games ... admires Petra Kvitová, Roger Federer and Serena Williams ... hobbies and interests include outdoor activities, such as hiking, cliff jumping, camping and lake swimming ... is first member of her immediate family born in North America (parents emigrated from Soviet Union to Canada) ... environmental science major with conservation biology concentration.

Year	Career Singles Record			Career Doubles Record		
	Duals	Tournaments	Overall	Duals	Tournaments	Overall
2019-20	9-1	5-5	14-6	3-0	7-3	10-3
2020-21	9-5	0-0	9-5	3-1	0-0	3-1
Totals	18-6	5-5	23-11	6-1	7-3	13-4



Vanessa Ong



VANESSA ONG

5-6 / Sophomore
Oklahoma City, Okla.
Laurel Springs School

UCLA CAREER HIGHLIGHTS

- ITA Scholar-Athlete (2021)
- Pac-12 Spring Academic Honor Roll member (2021)
- 3-time Athletic Director's Honor Roll member (last Spring 2021)
- Career-high Oracle/ITA singles ranking: 119 (Jan. 13, 2021)

2020-21

5-1 singles record (all dual matches) ... 4-0 doubles mark (all dual matches) ... Bruins captured Pac-12 regular-season championship outright for first time in program history ... team did not compete during fall ... reached season-high No. 119 in Oracle/ITA singles rankings (Jan. 13) ... named ITA Scholar-Athlete ... earned spot on Pac-12 Spring Academic Honor Roll ... posted majority of singles decisions on Court 6 (3-1); also finished on Courts 4 (1-0) and 5 (1-0) ... completed doubles matches came exclusively on Court 3 ... posted two match-clinching points, including 6-0, 6-3 decision over Anya Lamoreaux of Utah (March 19) ... with partner Elysia Bolton, defeated Pang Jittakoat/Fifa Kumhom of Washington State, 6-4, to clinch doubles point (April 24) ... with partner Sasha Vagramov, defeated Lindsay Hung/Jasmine Rich of Utah, 6-1,

to clinch doubles point (March 19) ... earned first-career singles victory with 6-4, 7-5 clinching decision over Erin Richardson of No. 19 California in ITA Kickoff Weekend first round (Jan. 24) ... named to Athletic Director's Honor Roll for Fall 2020, Winter 2021, Spring 2021.

PRIOR TO UCLA

Graduated from Laurel Springs School ... Blue-Chip recruit according to TennisRecruiting.net; reached high of No. 3 in 2017 ... won 2019 Lawrence ITF (Jayhawk 15K) singles title after advancing through qualifying rounds ... reached Girls' 18 singles and doubles quarterfinal rounds at 2018 USTA Billie Jean King National Championships in San Diego; defeated pair of higher-seeded opponents on singles side ... earned trips to Girls' 18 singles quarterfinal rounds at 2018 USTA International Spring Championships and 2017 Orange Bowl International Tennis Championships; was felled by top seed in each draw ... reached Girls' 18 doubles semifinal round at 51st Easter Bowl in 2018 ... advanced to Girls' 18 doubles quarterfinal round at 2017 Eddie Herr International Championships ... earned berth into 2016 US Open Junior Tennis Championships, where she won three singles matches before falling to Bianca Andreescu of Canada on Grandstand court.

PERSONAL

Daughter of Cheong and Bee (Tey) ... has one older brother, Johnson ... decided to attend UCLA because of location, her closeness to the women's tennis team and coaches "and the culture of UCLA" ... lists her greatest athletic thrill to date as playing on Grandstand court at 2016 US Open Junior Tennis Championships ... admires Roger Federer ... hobbies and interests include reading, baking and yoga ... played piano growing up ... aspires to career in medicine ... undeclared major.

Year	Career Singles Record			Career Doubles Record		
	Duals	Tournaments	Overall	Duals	Tournaments	Overall
2020-21	5-1	0-0	5-1	4-0	0-0	4-0
Totals	5-1	0-0	5-1	4-0	0-0	4-0



Freshmen Elise Wagle, Ava Catanzarite and Kimmi Hance



AVA CATANZARITE

5-4 / Freshman
Pittsburgh, Pa.
Pennsylvania Cyber Charter School

PRIOR TO UCLA

Graduated from Pennsylvania Cyber Charter School ... also attended North Allegheny HS in Wexford, Pa. ... Blue-Chip recruit according to TennisRecruiting.net; reached high of No. 11 in 2021 ... career-high ITF junior ranking: 125 ... trained at Gomez Tennis Academy in Naples, Fla. ... took women's singles title at 2020 Casely 10K Clay Court Championships in Hollywood, Fla. ... won Girls' 16 doubles Gold Balls at 2019 Easter Bowl in Indian Wells, Calif. and 2018 National Winter Championships in Orlando, Fla. ... swept ITF junior singles and doubles championships at J4 Kingston, J4 Nassau, J5 Le Diamant and J5 Saint-Francois tournaments in 2019 ... with partner Sasha Wood, seized doubles title at ITF J3 Monterrey tournament in 2019; also captured ITF junior doubles crown with partner Gianna Pielet at J4 Delray Beach event in 2019 ... with partner Allie Gretkowski, reached Girls' 16 doubles final round at 2018 Orange Bowl International Championships in Plantation, Fla. ... with partner Sydney Ratliff, earned Girls' 16 singles Silver Ball at 2018 USTA National Clay Court Championships in Memphis, Tenn.; reached Girls' 16 singles quarterfinal round ... collected Girls' 16 Bronze Balls at 2017 National Indoor Championships (with Ratliff) in Minneapolis and National Winter Championships (with partner Lana Mavor) in Orlando, Fla. ... helped North Allegheny to Pennsylvania Interscholastic Athletic Association and Western Pennsylvania Interscholastic Athletic League (WPIAL) Class AAA championships in 2017; occupied No. 1 spot in singles lineup ... reached final round at 2017 WPIAL Class AAA Singles Championship ... named USTA Net Generation Ambassador in 2018, 2019.

PERSONAL

Daughter of Jeffrey and Lisa ... has one older brother, Jack, and one younger sister, Nora ... decided to attend UCLA because it offers "premier and prestigious" academics and athletics, "amazing" resources, a location that "cannot be any better" and a tight-knit women's tennis program ... admires Roger Federer ... hobbies and interests include photography, going to the beach and basketball ... was trained gymnast until age of 10 and played basketball for five years ... undeclared major.



KIMMI HANCE

5-7 / Freshman
Torrance, Calif.
Palos Verdes Peninsula HS

PRIOR TO UCLA

Attended Palos Verdes Peninsula HS in Rolling Hills Estates, Calif. ... Blue-Chip recruit according to TennisRecruiting.net; reached high of No. 4 in 2021 ... with partner Reese Brantmeier, claimed doubles title at ITF J1 San Diego (International Open of Southern California) event in 2021 ... with Brantmeier, won Girls' 18 doubles championship at ITF JA Plantation (Orange Bowl) event in 2020 ... with partner Lauren Stein, captured doubles championship at ITF J4 Irvine tournament in 2019; also collected ITF junior doubles title with partner Vivian Ovrootsky at J5 San Diego event in 2020 ... named SoCal Varsity Player of the Year by Southern California News Group in 2019 ... selected Daily Breeze Girls Tennis Player of the Year in 2018, 2019 ... Panthers captured CIF Southern Section Open Division crowns in 2020, 2021 ... veteran of ITF women's tournaments, including singles quarterfinal-round trips at Williamsburg, Naples and Orlando in 2019 ... collected Bay League singles championships in 2017, 2018 ... PVPHS won Bay League team titles in 2017, 2019 ... occupied No. 1 spot in Panthers' singles lineup over course of four-year prep career.

PERSONAL

Full name: Kimberly Megan Michael Hance ... daughter of Ken and Courtney ... has one older sister, Kenadi, one older brother, Connor, and one younger brother, Keaton ... brother, Connor, played tennis at UCLA ... decided to attend UCLA because it "has a great combination of athletics and academics" and her older brother was a Bruin ... lists her greatest athletic thrill to date as capturing the 2020 Orange Bowl International Championships doubles title (with partner Reese Brantmeier) because it fulfilled a long-time goal ... admires Petra Kvitová ... hobbies and interests include baking, cooking, going to the beach and animals ... undeclared major.



ELISE WAGLE

5-8 / Freshman
Niskayuna, N.Y.
Laurel Springs School

PRIOR TO UCLA

Graduated from Laurel Springs School ... Blue-Chip recruit according to TennisRecruiting.net; reached high of No. 15 in 2018 ... with partner Katja Wiersholm, won Girls' 16 doubles title at 2019 USTA Billie Jean King National Championships in San Diego ... with partner Carson Tanguilig, captured Girls' 16 doubles crown at 2018 Orange Bowl International Tennis Championships in Plantation, Fla. ... with partner Valencia Xu, took doubles title at 2018 USTA Girls' 16 National Clay Court Championships in Memphis, Tenn. ... won singles crown at 2017 USTA Girls' 14 National Clay Court Championships in Plantation, Fla. ... with Tanguilig, seized Girls' 12 doubles championship at 2016 Easter Bowl in Indian Wells, Calif.

PERSONAL

Admires Roger Federer ... undeclared major.

Singles Records

Player	#1	#2	#3	#4	#5	#6	Duals	Tour.	Overall
Abi Altick	-	-	2-0	2-2	1-1	-	5-3	0-0	5-3
Elysia Bolton	0-1	4-0	6-3	-	-	-	10-4	0-0	10-4
Abbey Forbes	20-2	1-0	-	-	-	-	21-2	3-1	24-3
Annette Goulak	-	-	-	2-0	6-1	10-2	18-3	0-0	18-3
Jada Hart	1-0	8-2	2-1	-	-	-	11-3	0-1	11-4
Taylor Johnson	-	-	-	-	-	5-1	5-1	0-0	5-1
Vanessa Ong	-	-	-	1-0	1-0	3-1	5-1	0-0	5-1
Sasha Vagramov	-	2-0	1-2	-	5-3	1-0	9-5	0-0	9-5
Vivian Wolff	-	1-0	0-2	10-5	-	-	11-7	0-0	11-7
TOTALS	21-3	16-2	11-8	15-7	14-5	20-4	97-29	3-2	100-31

Doubles Records

Players	#1	#2	#3	Duals	Tour.	Overall
Bolton/Hart	4-2	-	-	4-2	2-1	6-3
Goulak/Wolff	-	18-3	-	18-3	0-0	18-3
Altick/Forbes	-	1-0	-	1-0	0-0	1-0
Altick/Johnson	-	1-0	6-3	7-3	0-0	7-3
Forbes/Hart	11-2	-	-	11-2	0-0	11-2
Ong/Vagramov	-	-	2-0	2-0	0-0	2-0
Bolton/Vagramov	-	-	1-1	1-1	0-0	1-1
Bolton/Johnson	-	-	1-1	1-1	0-0	1-1
Altick/Bolton	-	-	5-0	5-0	0-0	5-0
Forbes/Ong	-	-	1-0	1-0	0-0	1-0
Bolton/Ong	-	-	1-0	1-0	0-0	1-0
TOTALS	15-4	20-3	18-5	53-12	2-1	55-13

Individual Doubles Records

Abi Altick	13-3
Elysia Bolton	14-5
Abbey Forbes	13-2
Annette Goulak	18-3
Jada Hart	17-5
Taylor Johnson	8-4
Vanessa Ong	4-0
Sasha Vagramov	3-1
Vivian Wolff	18-3

Against Ranked Singles Opponents

Abi Altick	0-1
Elysia Bolton	3-2
Abbey Forbes	18-3
Jada Hart	4-3
Sasha Vagramov	0-1
Vivian Wolff	1-4

All-Pac-12 Honors



First Team

Abbey Forbes, UCLA

Janice Tjen, ORE
Haley Giavara, CAL
Michaela Gordon, STAN
Vanessa Wong, WASH
Salma Ewing, USC

Second Team

Jada Hart, UCLA

Michaela Bayerlova, WSU
Ilze Hattingh, ASU
Eryn Cayetano, USC
Jelena Lukic, ARIZ
Julia Rosenqvist, CAL

Honorable Mention

Kayla Wilkins, ASU	Angelica Blake, STAN
Anna Bright, CAL	Emma Higuchi, STAN
Jada Bui, CAL	Vivian Wolff, UCLA
Hannah Viller Moeller, CAL	Annette Goulak, UCLA
Valentina Ivanov, CAL	Naomi Cheong, USC
Maria Campos, COLO	Danielle Willson, USC
Megan Forster, COLO	Anastasia Goncharova, UTAH
Uxia Martinez Moral, ORE	Sarah-Maude Fortin, WASH
Rifanty Kahfiani, ORE	Sedona Gallagher, WASH

Year-End Awards

Singles Player of the Year Abbey Forbes, UCLA

Doubles Team of the Year Abbey Forbes/Jada Hart, UCLA

Freshman/Newcomer of the Year Janice Tjen, ORE

Coach of the Year Amanda Augustus, CAL

Bruins in the Oracle/ITA Rankings

Team	1/14	1/27	2/10	2/17	2/24	3/3	3/10	3/17	3/24	3/30	4/7	4/14	4/21	4/28	5/5	5/26
UCLA	2	2	3	3	6	6	5	5	10	10	9	8	5	5	4	5
Singles	1/13		3/24		3/30		4/14		4/21		4/28		5/5		6/2	
Elysia Bolton	9		48		113		124		-		117		-		118	
Abbey Forbes	7		8		11		7		8		7		7		4	
Jada Hart	19		-		121		-		50		55		50		60	
Vanessa Ong	119		-		-		-		-		-		-		-	
Sasha Vagramov	113		-		-		-		-		-		-		-	
Doubles	1/13		3/24		3/30		4/14		4/21		4/28		5/5		6/2	
Bolton/Hart	1		72		-		85		72		67		59		28	
Forbes/Hart	-		51		79		-		-		-		-		79	
Goulak/Wolff	-		-		-		-		-		-		-		57	

Dual-Match Scoring & Results

Date	Opponent	Result, Score
Jan. 24	#19 CALIFORNIA@	W, 4-0
Jan. 25	TEXAS A&M@	W, 4-0
Feb. 5	at #10 Oklahoma State^	W, 4-0
Feb. 6	vs. #3 Texas^	L, 2-4
Feb. 7	vs. #5 Pepperdine^	W, 4-2
Feb. 13	at San Diego	W, 7-0
Feb. 20	at #17 California	L, 3-4
Feb. 26	at #17 USC	W, 6-1
March 5	at #47 Washington State*	W, 6-1
March 7	at #39 Washington*	W, 6-1
March 12	at #4 Pepperdine	L, 3-4
March 19	UTAH*	W, 7-0
March 20	COLORADO*	W, 4-0
March 28	at Oregon*	W, 4-1
April 2	at #34 Arizona State*	W, 4-3
April 3	at Arizona*	W, 4-0
April 9	#38 STANFORD*	W, 7-0
April 10	#27 CALIFORNIA*	W, 7-0
April 14	#6 PEPPERDINE	W, 5-2
April 16	#36 USC*	W, 4-0
April 24	vs. Washington State#	W, 4-0
April 25	vs. #33 Arizona State#	W, 4-2
April 26	vs. #27 California#	L, 2-4
May 7	GRAND CANYON%	W, 4-0
May 8	#30 TEXAS TECH%	W, 4-0
May 16	vs. #11 Georgia Tech%	W, 4-0
May 19	vs. #5 Pepperdine%	L, 3-4

Home matches in ALL CAPS

* Denotes Pac-12 Match @ ITA Kick-Off Weekend

^ ITA Inddors

Pac-12 Championships

% NCAA Championships

Pac-12 Standings

1. UCLA	10-0
2. Stanford	8-2
3. California	7-3
4. Arizona State	6-4
5. Washington	5-5
Oregon	5-5
USC	5-5
8. Washington State	4-6
9. Colorado	3-7
10. Arizona	2-8
11. Utah	0-10

Oracle/ITA National Team Rankings

1. Texas	
2. North Carolina	
3. Pepperdine	
4. Georgia	
5. UCLA	
6. NC State	
7. Florida State	
8. Duke	
9. Virginia	
10. Georgia Tech	
11. UCF	
12. Ohio State	
13. California	
14. Baylor	
15. Texas A&M	
16. Michigan	21. Northwestern
17. LSU	22. Auburn
18. Tennessee	23. Stanford
19. Florida	24. Oklahoma
20. Miami (Fla.)	25. Kentucky





The 2020-21 Bruins

#2 UCLA 4, #19 California 0

Jan. 24, 2021 @ Los Angeles Tennis Center

Doubles competition

1. #1 Bolton/Hart (UCLA) def. #53 Bright/Rosenqvist (CAL) 6-1
2. Goulak/Wolff (UCLA) def. Giavara/Viller Moeller (CAL) 6-3
3. Altick/Forbes (UCLA) vs. Bui/Ivanov (CAL) 4-5, unfinished

Singles competition

1. #14 Elysia Bolton (UCLA) vs. Tina Kreinis (MINN) 6-2, 5-5, unfinished
2. #6 Abbey Forbes (UCLA) def. Tiffany Huber (MINN) 6-2, 6-0
3. Abi Altick (UCLA) vs. Dalila Said (MINN) 5-7, 3-2, unfinished
4. #99 Annette Goulak (UCLA) def. Ekin Ercetin (MINN) 6-2, 6-2
5. #108 Sasha Vagramov (UCLA) vs. Cammy Frei (MINN) 6-2, 5-5, unfinished
6. Taylor Johnson (UCLA) def. Juliet Zhang (MINN) 6-2, 6-3

#2 UCLA 4, Texas A&M 0

Jan. 25, 2021 @ Los Angeles Tennis Center

Doubles competition

1. #1 Bolton/Hart (UCLA) def. #39 Goldsmith/Makarova (TAMU) 6-2
2. Goulak/Wolff (UCLA) def. McBryde/Townsend (TAMU) 6-1
3. Altick/Johnson (UCLA) vs. Anzo/McQuaid (TAMU) 4-4, unfinished

Singles competition

1. #7 Abbey Forbes (UCLA) def. #64 Tatiana Makarova (TAMU) 6-2, 6-0
2. #9 Elysia Bolton (UCLA) def. Jayci Goldsmith (TAMU) 6-2, 6-3
3. #19 Jada Hart (UCLA) vs. Katya Townsend (TAMU) 3-6, 5-2, unfinished
4. Vivian Wolff (UCLA) vs. Renee McBryde (TAMU) 4-6, 1-3, unfinished
5. Abi Altick (UCLA) vs. Riley McQuaid (TAMU) 6-2, 5-1, unfinished
6. Annette Goulak (UCLA) def. Jessica Anzo (TAMU) 6-2, 6-2

#2 UCLA 4, #10 Oklahoma State 0

Feb. 5, 2021 @ Stillwater, Okla.

Doubles competition

1. #34 Miyamoto/Thamchaiwat (OKST) vs. Goulak/Wolff (UCLA) 3-2, unfinished

2. Altick/Forbes (UCLA) def. Boggs/Medvedeva (OKST) 6-0
3. No player/No player (UCLA) def. No player/No player (OKST), by forfeit

Singles competition

1. #24 Bunyawit Thamchaiwat (OKST) vs. #9 Elysia Bolton (UCLA) 6-4, 0-1, unfinished
2. #77 Ayumi Miyamoto (OKST) vs. Vivian Wolff (UCLA) 2-6, 1-1, unfinished
3. Daniella Medvedeva (OKST) vs. Abi Altick (UCLA) 6-5, unfinished
4. Annette Goulak (UCLA) def. Lora Boggs (OKST) 6-2, 6-0
5. No player (UCLA) def. No player (OKST), by forfeit
6. No player (UCLA) def. No player (OKST), by forfeit

#3 Texas 4, #2 UCLA 2

Feb. 6, 2021 @ Stillwater, Okla.

Doubles competition

1. Collins/Sun (TEX) def. #1 Bolton/Hart (UCLA) 6-4
2. #48 Labrana/Turati (TEX) def. Goulak/Wolff (UCLA) 6-3
3. Altick/Johnson (UCLA) def. Chavatipon/Perez Mur (TEX) 6-2

Singles competition

1. #66 Peyton Stearns (TEX) def. #9 Elysia Bolton (UCLA) 6-3, 6-2
2. #7 Abbey Forbes (UCLA) def. #5 Anna Turati (TEX) 7-5, 6-1
3. #19 Jada Hart (UCLA) def. #94 Lulu Sun (TEX) 1-6, 6-2, 6-4
4. #125 Charlotte Chavatipon (TEX) def. Vivian Wolff (UCLA) 6-1, 6-4
5. Abi Altick (UCLA) vs. Malaika Rapolu (TEX) 3-6, 7-5, 1-2, unfinished
6. Kylie Collins (TEX) def. Annette Goulak (UCLA) 7-5, 7-6 (7-1)

#2 UCLA 4, #5 Pepperdine 2

Feb. 7, 2021 @ Stillwater, Okla.

Doubles competition

1. #1 Bolton/Hart (UCLA) vs. Failla/Fukuda (PEPP) 4-3, unfinished
2. Goulak/Wolff (UCLA) def. Olsen/Redeljik (PEPP) 6-1
3. Altick/Johnson (UCLA) def. Pachkaleva/Zaar (PEPP) 6-2

Singles competition

1. #33 Jessica Failla (PEPP) def. #7 Abbey Forbes (UCLA) 3-6, 7-6 (7-4), 6-4
2. #9 Elysia Bolton (UCLA) def. #12 Shiori Fukuda (PEPP) 6-2, 4-6, 7-6 (7-3)

3. #19 Jada Hart (UCLA) def. #45 Lexi Ryngler (PEPP) 6-1, 6-3
4. #88 Taisiya Pachkaleva (PEPP) def. Vivian Wolff (UCLA) 6-2, 6-1
5. Abi Altick (UCLA) vs. Lisa Zaar (PEPP) 6-2, 6-7 (5-7), 3-5, unfinished
6. Annette Goulak (UCLA) def. Nikki Redeljik (PEPP) 7-6 (9-7), 6-2

#3 UCLA 7, San Diego 0

Feb. 13, 2021 @ San Diego, Calif.

Doubles competition

1. Forbes/Hart (UCLA) def. Colling/Goldsmith (USD) 6-4
2. Goulak/Wolff (UCLA) def. Kukaras/Tyrina (USD) 6-3
3. Altick/Johnson (UCLA) def. Desiatnikov/McBride (USD) 6-3

Singles competition

1. #7 Abbey Forbes (UCLA) def. #61 Solymar Colling (USD) 6-4, 6-3
2. Vivian Wolff (UCLA) def. #124 Elizabeth Goldsmith (USD) 6-3, 6-3
3. Abi Altick (UCLA) def. Jordyn McBride (USD) 6-3, 6-3
4. Annette Goulak (UCLA) def. Abigail Desiatnikov (USD) 4-6, 6-4, 1-0 (10-2)
5. #113 Sasha Vagramov (UCLA) def. Kati Kukaras (USD) 6-3, 6-3
6. Taylor Johnson (UCLA) def. Victoria Kalaitzis (USD) 6-2, 7-5

#17 California 4, #3 UCLA 3

Feb. 20, 2021 @ Berkeley, Calif.

Doubles competition

1. #40 Giavara/Ivanov (CAL) def. #1 Bolton/Hart (UCLA) 6-4
2. Goulak/Wolff (UCLA) def. Bright/Viller Moeller (CAL) 6-2
3. Richardson/Rosenqvist (CAL) def. Altick/Johnson (UCLA) 7-6 (8-6)

Singles competition

1. #7 Abbey Forbes (UCLA) def. #18 Haley Giavara (CAL) 6-2, 6-0
2. #19 Jada Hart (UCLA) def. #43 Julia Rosenqvist (CAL) 6-4, 6-2
3. #26 Valentina Ivanov (CAL) def. Vivian Wolff (UCLA) 4-6, 6-1, 6-3
4. Jada Bui (CAL) def. Abi Altick (UCLA) 6-7 (5-7), 6-2, 6-3
5. H. Viller Moeller (CAL) def. Annette Goulak (UCLA) 6-3, 7-5
6. #113 Sasha Vagramov (UCLA) def. Anna Bright (CAL) 7-6 (8-6), 6-1

#6 UCLA 6, #17 USC 1

Feb. 26, 2021 @ Los Angeles, Calif.

Doubles competition

1. #1 Bolton/Hart (UCLA) def. Cayetano/Cheong (USC) 6-3
2. Goulak/Wolff (UCLA) def. Ewing/McKee (USC) 6-1
3. Dvorak/Willson (USC) def. Altick/Johnson (UCLA) 6-4

Singles competition

1. #7 Abbey Forbes (UCLA) def. #48 Eryn Cayetano (USC) 6-1, 6-4
2. #9 Elysia Bolton (UCLA) def. #103 Naomi Cheong (USC) 6-3, 5-7, 1-0 (10-8)
3. Salma Ewing (USC) def. #19 Jada Hart (UCLA) 4-6, 6-4, 1-0 (10-6)
4. Vivian Wolff (UCLA) def. Danielle Willson (USC) 6-4, 6-4
5. #113 Sasha Vagramov (UCLA) def. Summer Dvorak (USC) 6-3, 6-3
6. Annette Goulak (UCLA) def. Clare McKee (USC) 6-4, 6-1

#6 UCLA 6, #47 Washington State 1

March 5, 2021 @ Pullman, Wash.

Doubles competition

1. Forbes/Hart (UCLA) def. Bayerlova/Sato (WSU) 6-2
2. Goulak/Wolff (UCLA) def. Ates/Lee (WSU) 6-2
3. Altick/Johnson (UCLA) def. Jittakoat/Kumhom (WSU) 6-2

Singles competition

1. #7 Abbey Forbes (UCLA) def. #55 Michaela Bayerlova (WSU) 6-1, 6-2
2. #19 Jada Hart (UCLA) def. Hikaru Sato (WSU) 6-1, 6-2
3. #113 Sasha Vagramov (UCLA) def. Fifi Kumhom (WSU) 6-2, 6-1
4. Abi Altick (UCLA) def. Pang Jittakoat (WSU) 6-0, 7-6 (7-3)
5. Annette Goulak (UCLA) def. Savanna Ly-Nguyen (WSU) 6-2, 2-6, 1-0 (10-6)
6. Melissa Ates (WSU) def. Taylor Johnson (UCLA) 6-3, 3-6, 1-0 (10-6)

#6 UCLA 6, #39 Washington 1

March 7, 2021 @ Seattle, Wash.

Doubles competition

1. Forbes/Hart (UCLA) def. Fortin/Wong (WASH) 6-2
2. Goulak/Wolff (UCLA) def. Gallagher/Lin (WASH) 6-2
3. Chilton/Weil (WASH) vs. Altick/Johnson (UCLA) 4-4, unfinished

Singles competition

1. #7 Abbey Forbes (UCLA) def. #74 Vanessa Wong (WASH) 6-3, 5-7, 1-0 (10-6)
2. #113 Sasha Vagramov (UCLA) def. Sarah-Maude Fortin (WASH) 3-6, 6-4, 1-0 (10-6)
3. Sedona Gallagher (WASH) def. Vivian Wolff (UCLA) 6-3, 1-6, 1-0 (10-4)
4. Abi Altick (UCLA) def. Zoey Weil (WASH) 6-3, 6-0
5. Annette Goulak (UCLA) def. Tara Chilton (WASH) 6-1, 6-2
6. Taylor Johnson (UCLA) def. Yolanda Lin (WASH) 6-2, 7-5

#4 Pepperdine 4, #5 UCLA 3

March 12, 2021 @ Malibu, Calif.

Doubles competition

1. Failla/Fukuda (PEPP) vs. Forbes/Hart (UCLA) 2-5, unfinished
2. Goulak/Wolff (UCLA) def. Lahey/Redeljik (PEPP) 6-2
3. Altick/Johnson (UCLA) def. Pachkaleva/Zaar (PEPP) 6-1

Singles competition

1. #7 Abbey Forbes (UCLA) def. #1 Ashley Lahey (PEPP) 6-1, 6-4
2. #33 Jessica Failla (PEPP) def. #19 Jada Hart (UCLA) 7-6 (7-3), 4-6, 6-4
3. #12 Shiori Fukuda (PEPP) def. #113 Sasha Vagramov (UCLA) 7-6 (7-3), 6-3
4. #88 Taisiya Pachkaleva (PEPP) def. Abi Altick (UCLA) 6-4, 2-6, 6-2
5. Annette Goulak (UCLA) def. Nikki Redeljik (PEPP) 6-4, 6-3
6. Lisa Zaar (PEPP) def. #119 Vanessa Ong (UCLA) 6-4, 6-2

#5 UCLA 7, Utah 0

March 19, 2021 @ Los Angeles Tennis Center

Doubles competition

1. Forbes/Hart (UCLA) def. Dush/M. Lamoreaux (UTAH) 7-5
2. Altick/Johnson (UCLA) def. Goncharova/A. Lamoreaux (UTAH) 6-2
3. Ong/Vagramov (UCLA) def. Hung/Rich (UTAH) 6-1

Singles competition

1. #19 Jada Hart (UCLA) def. Madeline Lamoreaux (UTAH) 6-0, 7-6 (7-3)
2. #113 Sasha Vagramov (UCLA) def. Emily Dush (UTAH) 6-1, 6-1
3. Abi Altick (UCLA) def. Lindsay Hung (UTAH) 6-2, 6-4
4. Vivian Wolff (UCLA) def. Anastasia Goncharova (UTAH) 6-4, 6-1
5. #119 Vanessa Ong (UCLA) def. Anya Lamoreaux (UTAH) 6-0, 6-3
6. Taylor Johnson (UCLA) def. Olivia Mikkelsen (UTAH) 6-1, 6-1

#5 UCLA 4, Colorado 0

March 20, 2021 @ Los Angeles Tennis Center

Doubles competition

1. Forbes/Hart (UCLA) vs. Eggink/Nayar (COLO) 4-3, unfinished
2. Goulak/Wolff (UCLA) def. Derivan/Forster (COLO) 6-2
3. Ong/Vagramov (UCLA) def. Campos/Ecton (COLO) 6-1

Singles competition

1. #7 Abbey Forbes (UCLA) def. Sara Nayar (COLO) 6-0, 6-1
2. #113 Sasha Vagramov (UCLA) vs. Sophia Derivan (COLO) 6-0, 5-2, unfinished
3. Abi Altick (UCLA) vs. Antonia Balzert (COLO) 6-2, 3-2, unfinished
4. Vivian Wolff (UCLA) def. Maria Campos (COLO) 6-4, 6-1
5. Annette Goulak (UCLA) vs. Megan Forster (COLO) 6-4, 1-4, unfinished
6. #119 Vanessa Ong (UCLA) def. Fleur Eggink (COLO) 6-0, 6-0

#10 UCLA 4, Oregon 1

March 28, 2021 @ Eugene, Ore.

Doubles competition

1. Kahfiani/Martinez Moral (ORE) vs. #51 Forbes/Hart (UCLA) 3-5, unfinished
2. Mould/Tjen (ORE) def. Goulak/Wolff (UCLA) 6-2
3. Eshet/Mulville (ORE) def. Altick/Johnson (UCLA) 6-4

Singles competition

1. #8 Abbey Forbes (UCLA) def. Janice Tjen (ORE) 6-3, 6-1
2. Jada Hart (UCLA) def. Lillian Mould (ORE) 6-4, 6-0
3. Rifanty Kahfiani (ORE) vs. Sasha Vagramov (UCLA) 6-7 (5-7), 3-2, unfinished
4. Vivian Wolff (UCLA) def. Uxia Martinez Moral (ORE) 6-3, 7-5
5. Annette Goulak (UCLA) def. Allison Mulville (ORE) 6-2, 6-1
6. Julia Eshet (ORE) vs. Vanessa Ong (UCLA) 6-4, 5-6, unfinished

#10 UCLA 4, #34 Arizona State 3

April 2, 2021 @ Tempe, Ariz.

Doubles competition

1. #79 Forbes/Hart (UCLA) def. Hattingh/John-Baptiste (ASU) 6-3
2. Goulak/Wolff (UCLA) def. Argyrokastriti/Hampton (ASU) 6-4
3. Kolarova/Turkovic (ASU) def. Bolton/Vagramov (UCLA) 6-2

Singles competition

1. #11 Abbey Forbes (UCLA) def. #119 Ilze Hattingh (ASU) 6-3, 6-2
2. #121 Jada Hart (UCLA) def. Sammi Hampton (ASU) 6-4, 4-6, 6-4

3. Lauryn John-Baptiste (ASU) def. Sasha Vagramov (UCLA) 6-4, 6-4
4. M. Argyrokastriti (ASU) def. Vivian Wolff (UCLA) 6-4, 7-5
5. Domenika Turkovic (ASU) def. Abi Altick (UCLA) 6-3, 6-2
6. Annette Goulak (UCLA) def. Cali Jankowski (ASU) 7-5, 2-6, 6-4

#10 UCLA 4, Arizona 0

April 3, 2021 @ Tucson, Ariz.

Doubles competition

1. Iglupas/Lukic (ARIZ) def. #79 Forbes/Hart (UCLA) 6-4
2. Goulak/Wolff (UCLA) def. Heynemans/Wilkins (ARIZ) 6-3
3. Bolton/Vagramov (UCLA) def. Amos/Zandberg (ARIZ) 7-5

Singles competition

1. #11 Abbey Forbes (UCLA) def. Jelena Lukic (ARIZ) 6-2, 6-2
2. #121 Jada Hart (UCLA) def. Talya Zandberg (ARIZ) 6-2, 6-1
3. Kayla Wilkins (ARIZ) vs. Sasha Vagramov (UCLA) 3-6, 5-1, unfinished
4. Abby Amos (ARIZ) vs. Annette Goulak (UCLA) 1-6, 5-2, unfinished
5. Gitte Heynemans (ARIZ) vs. Vanessa Ong (UCLA) 4-6, 3-3, unfinished
6. Taylor Johnson (UCLA) def. Khim Iglupas (ARIZ) 6-2, 6-3

#9 UCLA 7, #38 Stanford 0

April 9, 2021 @ Los Angeles Tennis Center

Doubles competition

1. #79 Forbes/Hart (UCLA) def. Gordon/Madurawe (STAN) 6-2
2. Goulak/Wolff (UCLA) vs. Arbuthnott/Blake (STAN) 4-4, unfinished
3. Bolton/Johnson (UCLA) def. Choy/Higuchi (STAN) 6-2

Singles competition

1. #11 Abbey Forbes (UCLA) def. #48 Michaela Gordon (STAN) 6-2, 6-4
2. #121 Jada Hart (UCLA) def. Angelica Blake (STAN) 6-4, 6-2
3. #113 Elysia Bolton (UCLA) def. Emily Arbuthnott (STAN) 6-1, 3-6, 7-5
4. Vivian Wolff (UCLA) def. Janice Shin (STAN) 6-2, 6-0
5. Sasha Vagramov (UCLA) def. Sara Choy (STAN) 2-6, 6-4, 1-0 (11-9)
6. Annette Goulak (UCLA) def. Emma Higuchi (STAN) 6-2, 6-1

#9 UCLA 7, #27 California 0

April 10, 2021 @ Los Angeles Tennis Center

Doubles competition

1. #79 Forbes/Hart (UCLA) def. Giavara/Ivanov (CAL) 6-3
2. Goulak/Wolff (UCLA) def. Bright/Viller Moeller (CAL) 6-1
3. Bui/Richardson (CAL) def. Bolton/Johnson (UCLA) 6-4

Singles competition

1. #11 Abbey Forbes (UCLA) def. #41 Haley Giavara (CAL) 6-2, 6-0
2. #121 Jada Hart (UCLA) def. Julia Rosenqvist (CAL) 6-2, 6-0
3. #113 Elysia Bolton (UCLA) def. Valentina Ivanov (CAL) 6-3, 6-4
4. Vivian Wolff (UCLA) def. Jada Bui (CAL) 6-1, 6-4
5. Annette Goulak (UCLA) def. H. Viller Moeller (CAL) 6-2, 3-6, 6-3
6. Vanessa Ong (UCLA) def. Anna Bright (CAL) 6-2, 6-2

#8 UCLA 5, #6 Pepperdine 2

April 14, 2021 @ Los Angeles Tennis Center

Doubles competition

1. Forbes/Hart (UCLA) vs. Failla/Fukuda (PEPP) 5-4, unfinished
2. Goulak/Wolff (UCLA) def. Pachkaleva/Zaar (PEPP) 6-3
3. Altick/Bolton (UCLA) def. Lahey/Redeljik (PEPP) 6-3

Singles competition

1. #7 Abbey Forbes (UCLA) def. Ashley Lahey (PEPP) 2-6, 6-3, 6-2
2. Jada Hart (UCLA) def. #21 Jessica Failla (PEPP) 6-2, 6-4
3. #124 Elysia Bolton (UCLA) def. Shiori Fukuda (PEPP) 6-3, 6-3
4. Taisiya Pachkaleva (PEPP) def. Vivian Wolff (UCLA) 4-6, 7-6 (8-6), 1-0 (10-3)
5. Lisa Zaar (PEPP) def. Sasha Vagramov (UCLA) 6-2, 6-2
6. Annette Goulak (UCLA) def. Nikki Redeljik (PEPP) 6-3, 6-4

#8 UCLA 4, #36 USC 0

April 16, 2021 @ Los Angeles Tennis Center

Doubles competition

1. #85 Bolton/Hart (UCLA) def. Cayetano/Kulikov (USC) 7-5
2. Goulak/Wolff (UCLA) def. Branstine/Ewing (USC) 6-4
3. Forbes/Ong (UCLA) def. Dvorak/Willson (USC) 6-1

Singles competition

1. #7 Abbey Forbes (UCLA) def. #65 Salma Ewing (USC) 6-2, 6-3
2. Jada Hart (UCLA) vs. Eryn Cayetano (USC) 7-6 (8-6), 2-1, unfinished
3. #124 Elysia Bolton (UCLA) def. Danielle Willson (USC) 6-0, 6-2
4. Vivian Wolff (UCLA) vs. Summer Dvorak (USC) 6-3, 5-3, unfinished
5. Sasha Vagramov (UCLA) def. Constance Branstine (USC) 6-3, 6-0
6. Abi Altick (UCLA) vs. Clare McKee (USC) 3-6, 4-3, unfinished

#5 UCLA 4, Washington State 0

April 24, 2021 @ San Diego, Calif.

Doubles competition

1. Forbes/Hart (UCLA) vs. Ates/Sato (WSU) 4-4, unfinished
2. Goulak/Wolff (UCLA) def. Bayerlova/Lee (WSU) 6-0
3. Bolton/Ong (UCLA) def. Jittakoat/Kumhom (WSU) 6-4

Singles competition

1. #8 Abbey Forbes (UCLA) vs. #78 Michaela Bayerlova (WSU) 6-2, 3-2, unfinished
2. #50 Jada Hart (UCLA) vs. Hikaru Sato (WSU) 6-4, 4-0, unfinished
3. Elysia Bolton (UCLA) def. Fifi Kumhom (WSU) 6-2, 6-2
4. Vivian Wolff (UCLA) def. Savanna Ly-Nguyen (WSU) 6-4, 6-0
5. Sasha Vagramov (UCLA) def. Pang Jittakoat (WSU) 6-2, 6-2
6. Vanessa Ong (UCLA) vs. Melisa Ates (WSU) 6-3, 3-3, unfinished

#5 UCLA 4, #33 Arizona State 2

April 25 2021 @ San Diego, Calif.

Doubles competition

1. Forbes/Hart (UCLA) def. Hattingh/John-Baptiste (ASU) 6-1
2. Goulak/Wolff (UCLA) vs. Argyrokastriti/Hampton (ASU) 4-3, unfinished
3. Altick/Bolton (UCLA) def. Kolarova/Morlet (ASU) 6-2

Singles competition

1. #8 Abbey Forbes (UCLA) def. Ilze Hattingh (ASU) 7-6 (7-5), 6-2
2. #50 Jada Hart (UCLA) vs. Sammi Hampton (ASU) 6-2, 3-6, 3-3, unfinished
3. Lauryn John-Baptiste (ASU) def. Elysia Bolton (UCLA) 6-2, 6-2
4. Vivian Wolff (UCLA) def. Giulia Morlet (ASU) 6-2, 7-6 (8-6)
5. M. Argyrokastriti (ASU) def. Sasha Vagramov (UCLA) 6-2, 6-4
6. Annette Goulak (UCLA) def. Domenika Turkovic (ASU) 6-3, 6-1

#27 California 4, #5 UCLA 2

April 26, 2021 @ San Diego, Calif.

Doubles competition

1. Forbes/Hart (UCLA) def. Giavara/Ivanov (CAL) 6-2
2. Goulak/Wolff (UCLA) vs. Bright/Viller Moeller (CAL) 6-5, unfinished
3. Altick/Bolton (UCLA) def. Bui/Richardson (CAL) 7-5

Singles competition

1. #62 Haley Giavara (CAL) def. #8 Abbey Forbes (UCLA) 6-4, 6-2
2. #50 Jada Hart (UCLA) vs. Valentina Ivanov (CAL) 6-7 (3-7), 6-3, 4-3, unfinished
3. Julia Rosenqvist (CAL) def. Elysia Bolton (UCLA) 6-7 (0-7), 7-5, 6-1
4. Vivian Wolff (UCLA) def. Jada Bui (CAL) 6-3, 6-2
5. H. Viller Moeller (CAL) def. Sasha Vagramov (UCLA) 6-2, 6-3
6. Anna Bright (CAL) def. Annette Goulak (UCLA) 6-0, 6-3

#4 UCLA 4, Grand Canyon 0

May 7, 2021 @ Los Angeles Tennis Center

Doubles competition

1. Forbes/Hart (UCLA) def. Puehse/Weiss (GCU) 6-1
2. Goulak/Wolff (UCLA) def. Occhipinti/Prudhomme (GCU) 6-2
3. Altick/Johnson (UCLA) vs. Andersen/Lomas (GCU) 5-2, unfinished

Singles competition

1. #7 Abbey Forbes (UCLA) vs. Natasha Puehse (GCU) 6-1, 4-2, unfinished
2. #50 Jada Hart (UCLA) vs. Emilia Occhipinti (GCU) 6-4, 2-0, unfinished
3. Vivian Wolff (UCLA) vs. Jana Weiss (GCU) 6-2, 3-0, unfinished
4. Vanessa Ong (UCLA) def. Joely Lomas (GCU) 6-1, 6-0
5. Annette Goulak (UCLA) def. Autum Prudhomme (GCU) 6-1, 6-1
6. Taylor Johnson (UCLA) def. Taylor Andersen (GCU) 6-0, 6-0

#4 UCLA 4, #30 Texas Tech 0

May 8, 2021 @ Los Angeles Tennis Center

Doubles competition

1. Forbes/Hart (UCLA) def. Mays/Staines (TTU) 6-1
2. Goulak/Wolff (UCLA) vs. Peet/Skriabina (TTU) 5-3, unfinished
3. Altick/Johnson (UCLA) def. Komac/Miller (TTU) 6-0

Singles competition

1. #7 Abbey Forbes (UCLA) def. Lisa Mays (TTU) 6-3, 6-2
2. #50 Jada Hart (UCLA) vs. #85 Margarita Skriabina (TTU) 4-6, 5-2, unfinished
3. Elysia Bolton (UCLA) vs. Nell Miller (TTU) 6-7 (7-9), 0-2, unfinished
4. Vivian Wolff (UCLA) def. Olivia Peet (TTU) 6-1, 6-3
5. Abi Altick (UCLA) vs. Metka Komac (TTU) 6-7 (6-8), 2-1, unfinished
6. Annette Goulak (UCLA) def. Bojana Marinkov (TTU) 6-2, 6-2

#4 UCLA 4, #11 Georgia Tech 0

May 16, 2021 @ Orlando, Fla.

Doubles competition

1. Forbes/Hart (UCLA) vs. #3 Flores/Jones (GT) 5-3, unfinished
2. Goulak/Wolff (UCLA) def. #16 Cohen/Hrastar (GT) 6-1
3. Altick/Bolton (UCLA) def. Dedaj/Lee (GT) 6-3

Singles competition

1. #7 Abbey Forbes (UCLA) def. #5 Kenya Jones (GT) 6-3, 6-1
2. #50 Jada Hart (UCLA) vs. #13 Victoria Flores (GT) 3-6, 6-2, 2-1, unfinished
3. Elysia Bolton (UCLA) def. Gia Cohen (GT) 6-4, 6-4

4. Vivian Wolff (UCLA) vs. #100 Ava Hrastar (GT) 7-6 (8-6), 3-2, unfinished
5. Vanessa Ong (UCLA) vs. Carol Lee (GT) 2-6, 3-4, unfinished
6. Annette Goulak (UCLA) def. Mahak Jain (GT) 6-0, 6-1

#5 Pepperdine 4, #4 UCLA 3

May 19, 2021 @ Orlando, Fla.

Doubles competition

1. Lahey/Zaar (PEPP) def. #59 Hart/Forbes (UCLA) 7-6 (10-8)
2. Fukuda/Pachkaleva (PEPP) def. Goulak/Wolff (UCLA) 6-4
3. Altick/Bolton (UCLA) def. Failla/Iamachkine (PEPP) 7-5

Singles competition

1. #7 Abbey Forbes (UCLA) def. #77 Ashley Lahey (PEPP) 4-6, 6-2, 6-4
2. #21 Jessica Failla (PEPP) def. #50 Jada Hart (UCLA) 7-6 (9-7), 6-4
3. #89 Taisiya Pachkaleva (PEPP) def. Elysia Bolton (UCLA) 6-3, 1-6, 7-5
4. #118 Shiori Fukuda (PEPP) def. Vivian Wolff (UCLA) 6-7 (7-9), 6-3, 6-2
5. Abi Altick (UCLA) def. Lisa Zaar (PEPP) 6-2, 6-3
6. Annette Goulak (UCLA) def. Nikki Redeljik (PEPP) 7-6 (7-4), 6-3

ALL-TIME LETTERWINNERS



Robin Anderson



Ayan Broomfield

A

Algazi, Jessica	1984, 1985
Altick, Abi	2018-2021
Amaral, Annemarie	1987
Anderson, Robin	2012-15
Andrews, Gabby	2017-19
Anglin, Jody	1996, 1997

B

Baker, Jenny	1992, 1993
Barg, Penny	1983
Bartel, Colinne	1986-88
Basica, Amanda	1998-2000
Bell, Becky	1978-1980
Bendetti, Sophie	2018-2021
Bercek, Daniela	2004, 2005
Blount, Renee	1978
Bolton, Elysia	2019-2021
Brady, Jennifer	2014, 2015
Bradley, Megan	2002
Broomfield, Ayan	2018, 2019
Bruno, Andrea	1981, 1982

C

Campbell, Cindy	1980-82
Carleton, Jackie	2003, 2004
Ceccato, Debbie	1987
Ceniza, Mamie	1989-1992
Cetale, Dominique	2014
Chi, Jane	1993-95
Chi, Stephanie	1995, 1996
Chiles, Meredith	1993
Cooper, Allyson	1985-88
Cooper, Annica	1997-2000



Jane Chi



Karen Dewis

D

Dewis, Karen	1981-84
Dockendorf, Jordan	2009
Dolehide, Courtney	2011-14
Donahue, Jennifer	1998-2000
Doty, Jill	1987
Dreyer, Kirsten	1988-1991
Duesler, Becky	2007, 2008
Duvall, Jeanne	1978

E

Emmons, Jessica	1988-1990
Essegir, Ferial	2003-04

F

Fisher, Lauren	2001-04
Fleming, Holly	2012, 2013
Fleming, Terri	2015-18
Foley, Cammie	1990-93
Forbes, Abbey	2020, 2021
Freudenberg, Brandi	1996-99
Fritz-Knockow, Mariko	2001, 2002
Fuchs, Jennifer	1986, 1987

G

Gallant, Kerry	1995, 1996
Gerken, Barbara	1983
Gilbert, Dana	1978, 1979
Godbey, Chelsea	2001
Goldberg, Caroline	2020, 2021
Goldt, Lara	1989
Gordon, Laura	2003-06
Gordon, Shannon	1978, 1979
Goulak, Annette	2020, 2021
Gray, Alyson	1996-98
Gray, Shana	1996-98
Gregg, Sarah	2002-05



Cammie Foley



Catherine Harrison

H

Hain, Michelle	1987
Harrison, Catherine	2013-16
Hart, Jada	2017-2021
Hawley, Catherine	2000-02
Henricksson, Ann	1979
Hickey, Noelle	2010, 2011
Hilt, Jenny	1991-94
Hoffpauir, Stephanie	2010
Howard, Kristy	1994
Huebner, Karin	1980-83
Hy, Patricia	1984-86

J

Jablonow, Jill	1980-82
Jannone, Michelle	1994, 1995
Jellen, Stacey	1994
Joelson, Ashley	2006-09
Johansson, Maya	2009-2011
Johnson, Taylor	2019-2021
Jolson, Kate	2003, 2004
Jones, McCall	2011, 2012
Joshi, Shilpa	2003, 2004

K

Keil, Kathrin	1981, 1982
Kirsch, Dylan	2013
Kocsis, Kati	1997, 1998
Kriva, Andrea	1983

L

LaFrance, Katie	2019
LaFranchi, Debbie	1989-1991
LaFranchi, Maria	1985-88
Lewis, Lynn	1982-85
Lester, Megan	2011-13
Liebermann, Andrea	1989
Lin, Tracy	2005-08
Lind, Anna-Viktoria	2006-09
Loncaric, Anya	2003-05
Luca, Laura	2016
Ludloff, Heather	1982, 1983
Lumpkin, Elizabeth	2005-08



Kati Kocsis



Kyle McPhillips

M

Magill, Maia	2015, 2016
Mall, Anne	1992
Manset, Helena	1980-83
Marinova, Petya	1999-2002
May, Alysia	1989
McCalla, Iwalani	1989-1992
McGoodwin, Alex	2004-08
McPhillips, Kyle	2013-16
Mendez, Anicia	1993-96
Miltholland, Allegra	1990, 1991
Miller, Alaina	2016-19
Minter, Elizabeth	1984
Montez, Pamela	2010-13
Morton, Skylar	2012, 2013
Moyers, Jennifer	1987

N

Nicholson, Beth	1989
-----------------	------

O

O'Brien, Kathy	1979-1982
O'Daly, Kathy	1995-97
O'Meara, Catherine	1986-89
Ong, Vanessa	2021
Ouwendijk, Wendy	1987, 1988

P

Pantic, Nina	2009-2011
Patterson, Cameron	2016
Phebus, Keri	1993-96
Po, Kimberly	1990, 1991
Popescu, Cristina	1998-2001
Poppelbaum, Sara	1982

R

Rajfer, Becky	1998
Ray, Amber	2004-07
Ray, Kaitlin	2012-15
Remyse, Andrea	2008-2011
Rosen, Brittany	2008-2009
Rostovsky, LeeAnn	1992, 1993
Roubanova, Katia	1997-99
Rudolph, Kelly	1995-98



Abigail Spears



Susie Starrett

S

Sampras, Stella	1988-1991
Schmidt, Elizabeth	1997-2000
Schnack, Yasmin	2007-2010

Seguso, Carling	2009-2012
Shaffer, Kelly	2014-16
Shibahara, Ena	2017, 2018
Snelson, Kathy	1978
Solomon, Shelly	1981, 1982
Spadea, Diana	1994, 1995
Spears, Abigail	2000
Stadler, Liz	1980, 1981
Starrett, Susie	1994, 1995
Stiefel, Michelle	2000, 2001

T

Tenny, Robin	1978
Thomas, Jane	1984-87
Thomas, Morgan	2011-14
Tu, Helen	1991-93

U

Urban, Joni	1985-88
-------------	---------



Jane Thomas



Riza Zalameda

V

Vagramov, Sasha	2020
Van Nguyen, Chanelle	2012-15

W

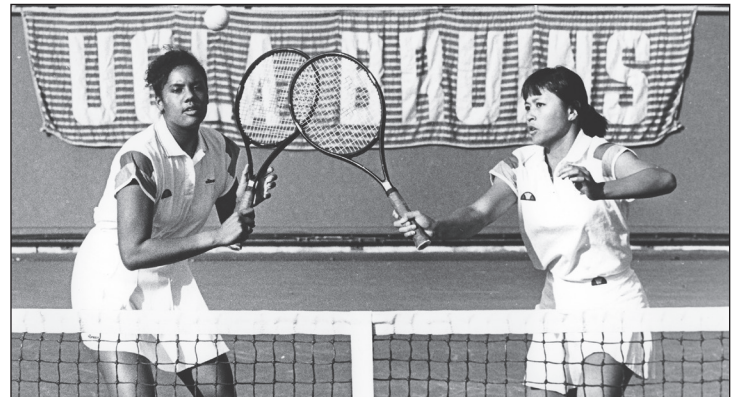
Walker, Angela	1980
Walker, Sara	2000-03
Walters, Karina	1985
Wetmore, Stephanie	2007-09
Wild, Susi	2003
Wiley, Kristin	2015-18
Wilkins, Jannell	1987
Wolff, Vivian	2021

Y

Yaftali, Nina	2003, 2004
Yang, Sarah	2007, 2008
Yaroshuk, Paige	1992-96

Z

Zalameda, Riza	2005-08
Ziebnik, Zana	2000, 2001



Iwalani McCalla (left) and Mamie Ceniza won the NCAA doubles title in 1992.

Record vs. Opponents

Arizona	68-8	Fresno State	15-2	Notre Dame	5-0	TCU	3-0
Arizona State	61-18	Georgia	5-8	North Carolina	6-5	Tennessee	3-0
Arkansas	2-0	Georgia Tech	4-4	Northern Arizona	1-0	Texas	10-11
Army West Point	2-0	Grand Canyon	1-0	Northwestern	8-3	Texas A&M	3-1
BYU	5-2	Harvard	4-0	Ohio State	0-2	Texas Tech	1-1
Baylor	7-6	Hawai'i	3-0	Oklahoma	2-0	Trinity	9-8
Boise State	2-0	Hawai'i Pacific	1-0	Oklahoma State	4-1	Tulsa	2-0
Boston College	1-0	Idaho	1-0	Ole Miss	3-2	UC Davis	4-0
Boston University	2-0	Illinois	2-0	Oregon	25-1	UC Irvine	41-2
Brown	1-0	Illinois State	1-0	Pacific	7-1	UC Riverside	1-0
Buffalo	1-0	Indiana	7-0	Pepperdine	58-20	UC Santa Barbara	35-0
California	49-37	IUPUI	1-0	Princeton	1-0	UC San Diego	2-0
Cal Poly	5-0	Kansas	2-0	Quinnipiac	2-0	UNLV	12-0
CSU Bakersfield	1-0	Kansas State	1-0	Rice	3-0	USC	57-51
CSU Dominguez Hills	1-0	Kentucky	5-0	Rollins	1-1	American International	4-0
CSU Fullerton	21-0	LSU	2-0	SMU	3-1	Utah	19-0
CSU Los Angeles	4-0	Long Beach State	29-0	Sacramento State	2-0	Vanderbilt	2-3
CSU Northridge	8-0	Loyola Marymount	26-0	Saint Mary's	9-0	Virginia	1-0
Clemson	6-3	Marshall	1-0	San Diego	18-0	Wake Forest	1-0
Colorado	10-0	Marquette	1-0	San Diego State	26-7	Washington	30-2
Denver	1-0	Miami (Fla.)	12-4	Santa Clara	1-0	Washington State	26-2
Duke	6-4	Michigan	2-0	South Alabama	1-1	Western Michigan	1-0
Eastern Kentucky	1-0	Minnesota	4-0	South Carolina	6-0	William & Mary	3-1
Florida	12-14	NC State	1-0	Southern University	1-0	Wisconsin	4-0
Florida State	2-0	New Mexico	0-1	Stanford	22-81	Yale	2-0

Head-Coaching History



Bill Zaima (1972-76, 1986-1996)

Year	Record	Nat. Finish	Conf. Finish
1972	8-0	--	--
1973	8-1	--	--
1974	8-2	--	--
1975	16-5	--	--
1976	18-3	4th	1st (SCWIC)
1986	4-4	9th	T-4th (PacWest)
1987	22-7	5th	2nd (Pac-10)
1988	20-6	3rd	3rd (Pac-10)
1989	21-5	2nd	2nd (Pac-10)
1990	23-7	3rd	3rd (Pac-10)
1991	23-5	2nd	2nd (Pac-10)
1992	16-8	T-5th	T-4th (Pac-10)
1993	8-14	T-9th	6th (Pac-10)
1994	15-8	T-9th	3rd (Pac-10)
1995	16-9	T-5th	4th (Pac-10)
1996	19-6	T-3rd	3rd (Pac-10)
Totals	245-90		1 Conf. Title



Gayle Godwin (1977-1986)

Year	Record	Nat. Finish	Conf. Finish
1977	16-4	9th	2nd (WCAA)
1978	23-4	3rd	2nd (WCAA)
1979	21-3	4th	1st (WCAA)
1980	21-10	6th	2nd (WCAA)
1981	27-4	1st	2nd (WCAA)
1982	29-4	2nd	1st (WCAA)
1983	23-6	3rd	2nd (WCAA)
1984	17-7	5th	4th (WCAA)
1985	14-11	9th	4th (PacWest)
1986	10-5	9th	T-4th (PacWest)
Totals	201-58	1 All-IAW Title	2 Conf. Titles



Stella Sampras Webster (1997-present)

Year	Record	Nat. Finish	Conf. Finish
1997	16-6	T-5th	2nd (Pac-10)
1998	17-11	T-9th	4th (Pac-10)
1999	18-8	T-17th	4th (Pac-10)
2000	17-9	T-5th	T-2nd (Pac-10)
2001	9-18	T-9th	7th (Pac-10)
2002	19-5	T-5th	3rd (Pac-10)
2003	16-11	T-5th	5th (Pac-10)
2004	21-8	2nd	3rd (Pac-10)
2005	17-6	T-9th	3rd (Pac-10)
2006	15-7	T-9th	4th (Pac-10)
2007	21-8	2nd	T-2nd (Pac-10)
2008	24-5	1st	T-1st (Pac-10)
2009	19-7	T-9th	4th (Pac-10)
2010	21-4	T-9th	2nd (Pac-10)
2011	22-6	T-3rd	2nd (Pac-10)
2012	26-3	2nd	T-3rd (Pac-12)
2013	20-6	T-3rd	4th (Pac-12)
2014	27-2	1st	2nd (Pac-12)
2015	23-5	2nd	3rd (Pac-12)
2016	15-7	T-17th	5th (Pac-12)
2017	14-9	T-17th	T-3rd (Pac-12)
2018	23-6	T-5th	2nd (Pac-12)
2019	21-8	T-5th	T-2nd (Pac-12)
2020	12-1	Not played (COVID-19)	--
2021	22-5	T-5th	1st (Pac-12)
Totals	475-171	2 NCAA Titles	2 Conf. Titles



Bill Zaima with Keri Phebus

UCLA Athletic Hall of Fame

2007*	Keri Phebus
2018*	Stella Sampras Webster

* Indicates induction year

Honda Award

1978	Jeanne Duvall
1995	Keri Phebus
2014	Robin Anderson
2015	Robin Anderson

All-Americans

1976	Paula Smith
	Cindy Thomas
1977	Paula Smith
1978	Renee Blount
	Jeanne Duvall
	Dana Gilbert
	Shannon Gordon
1979	Becky Bell
	Dana Gilbert
	Shannon Gordon
	Ann Hendricksson
	Kathy O'Brien
1980	Kathy O'Brien
1981	Ann Hendricksson
	Kathrin Keil
	Kathy O'Brien
	Shelly Solomon
1982	Kathrin Keil
	Lynn Lewis
	Heather Ludloff
	Helena Manset
	Kathy O'Brien
	Shelly Solomon
1983	Barbara Gerken
	Andrea Kriva
	Heather Ludloff
	Helena Manset
1984	Patricia Hy
	Lynn Lewis
	Elizabeth Minter
1985	Lynn Lewis
	Jane Thomas
	Joni Urban
1986	Jennifer Fuchs
	Jane Thomas
1987	Jennifer Fuchs
	Jane Thomas
	Joni Urban
1988	Jessica Emmons
	Stella Sampras
	Joni Urban
1989	Mamie Ceniza
	Jessica Emmons
	Alysia May
	Stella Sampras
1990	Mamie Ceniza
	Stella Sampras
1991	Mamie Ceniza
	Iwalani McCalla
	Kimberly Po
	Stella Sampras
1992	Mamie Ceniza
	Iwalani McCalla
1993	Cammie Foley
	Keri Phebus
1994	Jane Chi
	Keri Phebus
	Diana Spadea
	Susie Starrett
1995	Jane Chi
	Stephanie Chi
	Keri Phebus
	Susie Starrett
1996	Keri Phebus
	Paige Yaroshuk
1997	Annica Cooper



Heather Ludloff (left) and Lynn Lewis

	Kati Kocsis
	Katia Roubanova
	Elizabeth Schmidt
1998	Annica Cooper
1999	Amanda Basica
	Annica Cooper
2000	Sara Walker
2001	Lauren Fisher
	Petya Marinova
	Sara Walker
2002	Megan Bradley
	Lauren Fisher
	Petya Marinova
	Sara Walker
2003	Jackie Carleton
	Sara Walker
2004	Daniela Bercek
	Jackie Carleton
2005	Daniela Bercek
	Riza Zalameda
2006	Riza Zalameda
	Tracy Lin
2007	Yasmin Schnack
	Riza Zalameda
2008	Tracy Lin
	Riza Zalameda
2009	Andrea Remyense
	Yasmin Schnack
2010	Noelle Hickey
	Andrea Remyense
	Yasmin Schnack
2012	Robin Anderson
	Courtney Dolehide
	Pamela Montez
	Skylar Morton
2013	Robin Anderson
	Kyle McPhillips
	Skylar Morton
2014	Robin Anderson
	Jennifer Brady
	Catherine Harrison
	Kyle McPhillips
	Chanelle Van Nguyen
2015	Robin Anderson
	Jennifer Brady
	Catherine Harrison
	Kyle McPhillips
	Chanelle Van Nguyen
2016	Catherine Harrison
	Kyle McPhillips
2017	Ena Shibahara

2018	Terri Fleming
	Jada Hart
	Ena Shibahara
2019	Gabby Andrews
	Elysia Bolton
	Ayan Broomfield
	Jada Hart
2020	Elysia Bolton
	Abbey Forbes
	Jada Hart
2021	Elysia Bolton
	Abbey Forbes
	Jada Hart

ITA National Player of the Year

1995	Keri Phebus
------	-------------

ITA National Senior Player of the Year

1996	Keri Phebus
2008	Riza Zalameda
2015	Robin Anderson

ITA Regional Senior Player of the Year

1996	Keri Phebus
2006	Laura Gordon
2008	Riza Zalameda
2010	Yasmin Schnack
2015	Robin Anderson
2016	Catherine Harrison
2019	Ayan Broomfield
2021	Jada Hart

ITA National Rookie of the Year

2002	Megan Bradley
2012	Robin Anderson (Co)
2017	Ena Shibahara

ITA Regional Rookie of the Year

2001	Lauren Fisher
2002	Megan Bradley
2003	Jackie Carleton
2012	Robin Anderson
2013	Kyle McPhillips
2014	Jennifer Brady
2017	Ena Shibahara
2019	Elysia Bolton
2020	Abbey Forbes

ITA National Player to Watch

1993	Keri Phebus
2000	Sara Walker
2020	Elysia Bolton

ITA Regional Player to Watch

2018	Ena Shibahara
2020	Elysia Bolton

ITA Regional Most Improved Senior

2019	Gabby Andrews
2021	Annette Goulak

ITA/Cissie Leary National Sportsmanship Award

2006	Laura Gordon
------	--------------

ITA/Cissie Leary Regional Sportsmanship Award

2002	Sara Walker
2006	Laura Gordon
2007	Elizabeth Lumpkin
2021	Abi Altick

ITA/Arthur Ashe Regional Leadership & Sportsmanship Award

2008	Elizabeth Lumpkin
------	-------------------

Wilson/ITA National Coach of the Year

2012	Stella Sampras Webster
------	------------------------

ITA National Assistant Coach of the Year

2000	Rance Brown
2012	Rance Brown

ITA Regional Assistant Coach of the Year

1999	Rance Brown
2000	Rance Brown
2007	Rance Brown
2010	Rance Brown
2012	Rance Brown

Wilson/ITA Regional Coach of the Year

1988	Bill Zaima
1989	Bill Zaima
1990	Bill Zaima
1995	Bill Zaima
1996	Bill Zaima
2000	Stella Sampras
2012	Stella Sampras Webster
2021	Stella Sampras Webster

ITA National Intercollegiate Indoors Champions

1995	Jane Chi (S)
1995	Keri Phebus/Susie Starrett (D)

USTA/ITA National Indoors Sportsmanship Award

2003	Sara Walker
------	-------------

UCLA Female Athlete of the Year

1995	Keri Phebus
------	-------------

All-Pac-12

1987	Jane Thomas
1988	Allyson Cooper
1989	Jessica Emmons
1990	Jessica Emmons
1991	Kimberly Po

AWARD WINNERS / NATIONAL CHAMPIONSHIPS

1992	Mamie Ceniza
1993	Keri Phebus
1994	Jane Chi
	Keri Phebus
1995	Jane Chi
	Keri Phebus
1996	Keri Phebus
	Paige Yaroshuk
	Stephanie Chi, 2nd
1997	Kati Kocsis
	Elizabeth Schmidt, 2nd
1998	Annica Cooper
	Cristina Popescu, 2nd
1999	Annica Cooper
	Amanda Basica, HM
	Cristina Popescu HM
2000	Sara Walker
	Annica Cooper, 2nd
	Abigail Spears, HM
2001	Sara Walker
2002	Sara Walker
	Megan Bradley
2003	Sara Walker, 2nd
	Jackie Carleton, 2nd
2004	Daniela Bercek, 2nd
	Jackie Carleton, 2nd
2005	Daniela Bercek
	Riza Zalameda, 2nd
2006	Laura Gordon
	Riza Zalameda, 2nd
	Tracy Lin, HM
2007	Riza Zalameda
	Tracy Lin, 2nd
	Yasmin Schnack, 2nd
2008	Riza Zalameda
	Tracy Lin, 2nd
	Andrea Remynse, HM
2009	Yasmin Schnack
	Andrea Remynse, 2nd
2010	Yasmin Schnack
	Andrea Remynse, 2nd
	Noelle Hickey, HM
2011	Noelle Hickey, HM
	Andrea Remynse, HM
2012	Robin Anderson
2013	Robin Anderson
	Kyle McPhillips, 2nd
2014	Robin Anderson
	Jennifer Brady
	Chanelle Van Nguyen, 2nd
	Kyle McPhillips, HM
2015	Robin Anderson
	Catherine Harrison, 2nd
	Chanelle Van Nguyen, 2nd
	Jennifer Brady, HM
	Kyle McPhillips, HM
2016	Catherine Harrison
	Kyle McPhillips, 2nd

2017	Ena Shibahara
	Jada Hart, 2nd
	Terri Fleming, HM
2018	Ena Shibahara
	Jada Hart, 2nd
	Abi Altick, HM
	Terri Fleming, HM
	Alaina Miller, HM
2019	Elysia Bolton
	Jada Hart
	Ayan Broomfield, HM
2021	Abbey Forbes
	Jada Hart, 2nd
	Annette Goulak, HM
	Vivian Wolff, HM

Pac-12 Singles Player of the Year

1995	Keri Phebus
1998	Annica Cooper
2008	Riza Zalameda
2010	Yasmin Schnack
2014	Robin Anderson
2015	Robin Anderson
2017	Ena Shibahara
2021	Abbey Forbes

Pac-12 Doubles Team of the Year

2005	Daniela Bercek/Riza Zalameda
2008	Tracy Lin/Riza Zalameda
2010	Andrea Remynse/Yasmin Schnack
2014	Robin Anderson/Jennifer Brady
2017	Jada Hart/Terri Fleming
2021	Abbey Forbes/Jada Hart

Pac-12 Freshman of the Year

2000	Sara Walker
2002	Megan Bradley
2004	Daniela Bercek
2012	Robin Anderson
2013	Kyle McPhillips
2014	Jennifer Brady
2017	Ena Shibahara
2019	Elysia Bolton

Pac-12 Coach of the Year

1988	Bill Zaima
1991	Bill Zaima
2008	Stella Sampras Webster

Pac-12 Singles Champions

1987	Jane Thomas
1995	Keri Phebus
1998	Annica Cooper
2000	Sara Walker
2008	Riza Zalameda
2010	Yasmin Schnack
2013	Kyle McPhillips
2014	Jennifer Brady
2015	Catherine Harrison

Pac-12 Doubles Champions

1989	Mamie Ceniza/Stella Sampras
1991	Kimberly Po/Stella Sampras
1996	Keri Phebus/Paige Yaroshuk
2001	Mariko Fritz-Krockow/Sara Walker
2007	Yasmin Schnack/Riza Zalameda
2010	Andrea Remynse/Yasmin Schnack

Pac-12 Invitational Singles Champions

2006	Ashley Joelson
2008	Alex McGoodwin
2009	Carling Seguso
2010	Nina Pantic

Pac-12 Invitational Doubles Champions

2009	Maya Johansson/Anna-Viktoria Lind
2010	Stephanie Hoffpauir/Carling Seguso
2016	Terri Fleming/Alaina Miller

Pac-12 All-Academic

1991	Kirsten Dreyer
	Kimberly Po, 2nd
1998	Annica Cooper
1999	Amanda Basica
	Annica Cooper
	Cristina Popescu, HM
	Katia Roubanova, HM
	Elizabeth Schmidt, HM
2000	Amanda Basica
	Annica Cooper
	Elizabeth Schmidt, 2nd
2002	Lauren Fisher, 2nd
	Catherine Hawley, HM
2004	Lauren Fisher
	Jackie Carleton, HM
2005	Alex McGoodwin
	Daniela Bercek, 2nd
	Laura Gordon, HM
	Sarah Gregg, HM
2006	Alex McGoodwin
	Tracy Lin, 2nd
	Elizabeth Lumpkin, 2nd
	Riza Zalameda, 2nd
	Laura Gordon, HM
2007	Tracy Lin
	Elizabeth Lumpkin
	Alex McGoodwin
	Riza Zalameda, 2nd
	Anna-Viktoria Lind, HM
2008	Tracy Lin
	Elizabeth Lumpkin
	Alex McGoodwin
	Riza Zalameda, 2nd
2009	Andrea Remynse, 2nd
	Ashley Joelson, HM
2010	Andrea Remynse
	Nina Pantic, HM

2011	Andrea Remynse
	Maya Johansson, HM
2012	Courtney Dolehide, HM
2013	Kaitlin Ray
	Courtney Dolehide, HM
2014	Kaitlin Ray
	Kyle McPhillips, HM
	Courtney Dolehide, HM
2015	Kaitlin Ray
	Robin Anderson, HM
	Catherine Harrison, HM
	Kyle McPhillips, HM
2016	Kyle McPhillips
	Catherine Harrison, HM
	Terri Fleming, HM
	Kristin Wiley, HM
	Laura Luca, HM
2017	Terri Fleming, HM
	Kristin Wiley, HM
	Terri Fleming, HM
	Jada Hart, HM
	Alaina Miller, HM
	Ena Shibahara, HM
2019	Abi Altick, 2nd
	Ayan Broomfield, HM
	Alaina Miller, HM
2020	Abi Altick
	Sophie Bendetti
	Elysia Bolton
	Taylor Johnson
2021	Abi Altick
	Sophie Bendetti
	Elysia Bolton
	Abbey Forbes
	Caroline Goldberg
	Annette Goulak
	Jada Hart
	Taylor Johnson
	Vanessa Ong
	Sasha Vagramov
	Vivian Wolff

Pac-12 Scholar-Athlete of the Year

2008	Riza Zalameda
2015	Kaitlin Ray

Pac-12 Regular-Season Champions

2008	Stella Sampras Webster
2021	Stella Sampras Webster

National Championships

AIAW Team Champions (1)

1981	Gayle Godwin
------	--------------

USTA National Collegiate Singles Champions (1)

1965	Mimi Henreid
------	--------------

AIAW Singles Champions (1)

1978	Jeanne Duval
------	--------------

NCAA Singles Champions (1)

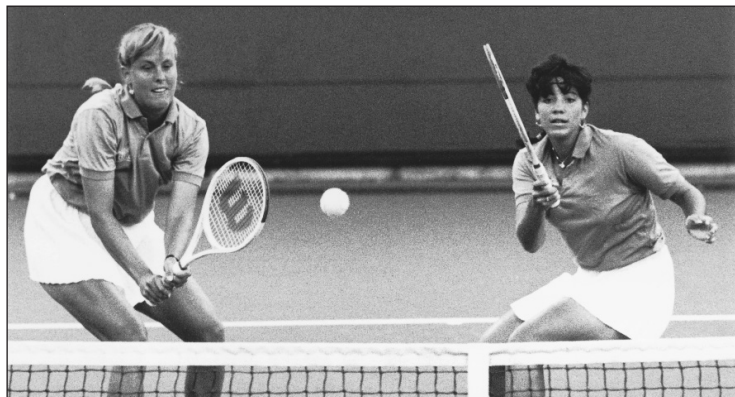
1995	Keri Phebus
------	-------------

NCAA Team Champions (2)

2008	Stella Sampras Webster
2014	Stella Sampras Webster

NCAA Doubles Champions (7)

1982	Lynn Lewis/Heather Ludloff
1988	Allyson Cooper/Stella Sampras
1992	Marnie Ceniza/Iwalani McCalla
1995	Keri Phebus/Susie Starrett
2004	Daniela Bercek/Lauren Fisher
2008	Tracy Lin/Riza Zalameda
2019	Gabby Andrews/Ayan Broomfield



Allyson Cooper (left) and Stella Sampras won the NCAA doubles title in 1988.

ALL-TIME RESULTS (1986-2021)



The 1981 Bruins

1986

Bill Zaima -- 14-9 / 2-6 PacWest (4th)

LONG BEACH STATE	W, 7-1
UC IRVINE	W, 9-0
PACIFIC	W, 9-0
UC SANTA BARBARA	W, 9-0
PEPPERDINE	W, 5-2
@ Stanford	L, 1-8
@ California	W, 6-3
SMU	W, 7-2
USC	L, 0-9
OKLAHOMA	W, 9-0
SAN DIEGO STATE	W, 6-3
CALIFORNIA	L, 4-5
@ Pepperdine	W, 6-3
@ Arizona State	L, 4-5
@ Arizona	L, 3-6
USIU	W, 8-1
ARIZONA STATE	W, 5-4
TRINITY	L, 3-6
@ San Diego State	W, 5-4
ARIZONA	W, 6-3
@ USC	L, 3-6
STANFORD	L, 4-5
NORTHWESTERN%	L, 3-6

% NCAA Championships (Austin, Texas)

1987

Bill Zaima -- 22-7 / 7-3 Pac-10 (2nd)

LONG BEACH STATE	W, 7-2
UNLV	W, 9-0
UC IRVINE	W, 9-0
@ Pepperdine	W, 6-3
SAN DIEGO	W, 7-2
vs. Wisconsin^	W, 8-1
vs. Trinity^	W, 7-2
vs. Miami^	W, 5-1
UC SANTA BARBARA	W, 8-1
PEPPERDINE	W, 6-3
USIU	W, 6-3
SAN DIEGO STATE	W, 7-2
@ Arizona	W, 5-4
@ Arizona State	W, 7-2
OKLAHOMA STATE	W, 7-2
USC	W, 6-3
ARIZONA STATE	W, 6-3
ARIZONA	W, 5-4
@ California	W, 5-4
@ Stanford	W, 5-4
@ SMU	L, 4-5
@ Texas	L, 4-5
@ Trinity	L, 4-5
CALIFORNIA	L, 4-5
STANFORD	L, 4-5
SAN DIEGO STATE	W, 6-3
@ USC	L, 3-6
KENTUCKY%	W, 8-1
STANFORD%	L, 1-5

^ Arizona Tournament
% NCAA Championships (LATC)

1988

Bill Zaima -- 20-6 / 6-4 Pac-10 (3rd)

UC SANTA BARBARA	W, 9-0
FRESNO STATE	W, 9-0
@ Utah	W, 8-1
vs. Georgia^	W, 5-4
vs. TCU^	W, 7-2
@ BYU	W, 6-3
UC IRVINE	W, 9-0
UNLV	W, 9-0
ARIZONA	W, 9-0
ARIZONA STATE	W, 8-1
@ USC	L, 4-5
vs. Indiana&	W, 6-1
vs. California&	W, 5-1
vs. Stanford&	L, 2-5
STANFORD	L, 3-6
CALIFORNIA	W, 5-4
HARVARD	W, 7-2
USIU	W, 8-1
@ Arizona State	L, 3-5
@ Arizona	W, 7-2
@ Stanford	W, 6-3
@ California	W, 6-3
USC	L, 3-6
TRINITY%	W, 6-0
CALIFORNIA%	W, 5-2
FLORIDA%	L, 4-5

^ BYU Tournament
& ITCA Indoor Team Championships
% NCAA Championships (LATC)

1989

Bill Zaima -- 21-5 / 6-3 Pac-10 (2nd)

UTAH	W, 5-4
UNLV	W, 9-0
SAN DIEGO	W, 7-2
@ Arizona	W, 7-2
@ Arizona State	W, 5-4
UC SANTA BARBARA	W, 8-1
PEPPERDINE	W, 6-3
vs. Duke&	W, 6-1
vs. Kentucky&	W, 5-2
vs. Stanford&	L, 1-5
vs. Georgia&	W, 5-4
@ USC	L, 1-5
PRINCETON	W, 9-0
HARVARD	W, 7-2
ARIZONA STATE	W, 7-2
ARIZONA	W, 7-2
SAN DIEGO STATE	W, 5-4
CALIFORNIA	W, 5-4
STANFORD	L, 1-5
BYU	W, 6-1
USC	W, 6-3
@ California	L, 4-5
vs. Arizona%	W, 6-3
vs. USC%	W, 5-4



The 1991 Bruins

@ Florida%	W, 5-2
vs. Stanford%	L, 0-5

& ITCA Indoor Team Championships
% NCAA Championships (Gainesville, Fla.)

1990

Bill Zaima -- 23-7 / 5-5 Pac-10 (3rd)

UTAH	W, 7-2
UC IRVINE	W, 9-0
UC SANTA BARBARA	W, 8-0
SAN DIEGO	W, 7-2
PEPPERDINE	W, 8-1
US INTERNATIONAL	W, 8-1
@ San Diego State	W, 8-1
@ Arizona State	W, 6-3
@ Arizona	W, 6-0
vs. Duke&	W, 6-1
vs. California&	W, 7-2
vs. Florida&	W, 5-2
vs. Stanford&	L, 2-5
BOSTON COLLEGE	W, 9-0
@ USC	L, 4-5
NOTRE DAME	W, 9-0
TEXAS	W, 5-4
UNLV	W, 8-1
ARIZONA	W, 7-2
ARIZONA STATE	W, 9-0
@ Stanford	L, 4-5
@ California	L, 4-5
@ Pepperdine	W, 6-2
USC	W, 5-4
SAN DIEGO STATE	W, 6-3
@ Stanford	L, 0-8
@ California	L, 4-5
vs. South Carolina%	W, 6-0
vs. Pepperdine%	W, 5-4
@ Florida%	L, 4-5

& ITCA Indoor Team Championships
% NCAA Championships (Gainesville, Fla.)

1991

Bill Zaima -- 23-5 / 8-2 Pac-10 (2nd)

UTAH	W, 5-4
FRESNO STATE	W, 9-0
UNLV	W, 9-0
UC SANTA BARBARA	W, 8-1
UC IRVINE	W, 7-2
@ Arizona	W, 6-2
@ Arizona State	W, 5-4
OREGON	W, 9-0
PEPPERDINE	W, 7-2
vs. Arizona&	W, 5-2
vs. Tennessee&	W, 5-2
vs. Florida&	L, 0-6
PEPPERDINE	L, 4-5
@ USC	W, 5-1
BROWN	W, 9-0
ARIZONA STATE	W, 8-1
ARIZONA	W, 9-0
PACIFIC	W, 8-1

@ California	W, 6-3
@ Stanford	L, 3-6
SAN DIEGO	W, 7-2
USC	W, 5-1
CALIFORNIA	W, 6-3
STANFORD	L, 2-7
vs. Ole Miss%	W, 5-1
vs. California%	W, 5-2
vs. Florida%	W, 6-3
@ Stanford%	L, 1-5

& ITCA Indoor Team Championships
% NCAA Championships (Palo Alto, Calif.)

1992

Bill Zaima -- 16-8 / 4-6 Pac-10 (T-4th)

LOYOLA MARYMOUNT	W, 9-0
UTAH	W, 8-1
UC IRVINE	W, 8-1
PEPPERDINE	W, 6-3
UNLV	W, 9-0
@ Arizona State	W, 5-4
@ Arizona	W, 5-4
UC SANTA BARBARA	W, 6-3
TEXAS	W, 5-3
vs. Ole Miss&	W, 5-1
vs. Pepperdine&	W, 5-4
vs. Florida&	L, 4-5
@ California	L, 4-5
@ Stanford	L, 3-6
@ USC	L, 3-5
KENTUCKY	W, 5-1
WASHINGTON	W, 7-2
ARIZONA	L, 4-5
ARIZONA STATE	W, 6-3
STANFORD	L, 0-6
CALIFORNIA	L, 3-5
USC	W, 7-2
vs. Indiana%	W, 5-1
vs. Florida%	L, 0-5

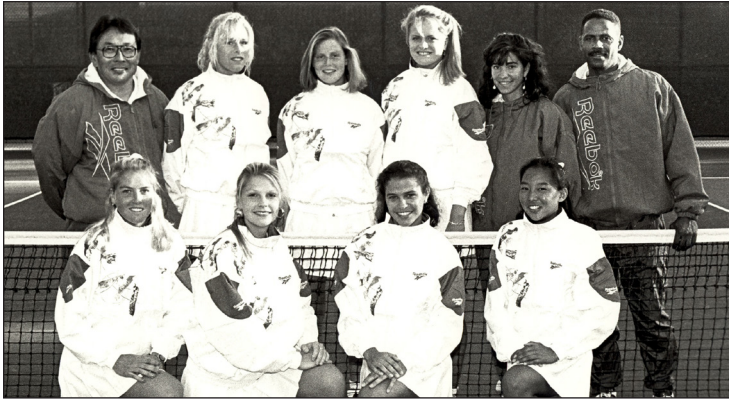
& ITCA Team Indoor Championships
% NCAA Championships (Palo Alto, Calif.)

1993

Bill Zaima -- 8-14 / 2-8 Pac-10 (6th)

vs. Notre Dame^	W, 7-2
@ Minnesota^	W, 7-2
vs. Georgia^	L, 4-5
ARIZONA STATE	W, 5-4
ARIZONA	L, 4-5
PEPPERDINE	L, 4-5
UTAH	W, 7-2
vs. Indiana&	W, 5-4
vs. Stanford&	L, 0-6
vs. USC&	L, 1-5
@ Arizona	L, 4-5
@ Arizona State	L, 3-6
@ USC	L, 1-5
@ California	L, 3-6
@ Stanford	L, 0-8
PACIFIC	W, 8-1

ALL-TIME RESULTS (1986-2021)



The 1994 Bruins

USC	W, 5-4
UC SANTA BARBARA	W, 6-3
CALIFORNIA	L, 3-6
STANFORD	L, 1-5
@ Pepperdine	L, 3-6
vs. Arizona State%	L, 1-5

^ Federated Insurance Classic
& National Team Indoors
% NCAA Championships (Gainesville, Fla.)

1994

Bill Zaima -- 15-8 / 5-4 Pac-10 (3rd)

LOYOLA MARYMOUNT	W, 9-0
UTAH	W, 8-1
UC IRVINE	W, 9-0
WASHINGTON STATE	W, 8-1
@ Arizona State	L, 2-5
@ Arizona	W, 5-4
PEPPERDINE	W, 7-2
UC SANTA BARBARA	W, 5-4
WASHINGTON	W, 6-3
vs. Florida&	L, 4-5
vs. BYU&	L, 2-5
vs. Wisconsin&	W, 5-4
ARIZONA	W, 5-4
ARIZONA STATE	W, 5-4
@ USC	L, 3-6
HARVARD	W, 8-1
STANFORD	W, 5-4
CALIFORNIA	L, 2-5
PACIFIC	W, 6-3
USC	W, 6-0
@ California	L, 4-5
@ Pepperdine	L, 3-6
vs. Florida%	L, 2-5

& National Team Indoors
% NCAA Championships (Athens, Ga.)

1995

Bill Zaima -- 16-9 / 4-6 Pac-10 (4th)

LOYOLA MARYMOUNT	W, 9-0
UTAH	W, 6-1
WASHINGTON STATE	W, 9-0
ARIZONA STATE	W, 5-3
ARIZONA	L, 3-5
UC IRVINE	W, 9-0
UC SANTA BARBARA	W, 8-1
KENTUCKY&	W, 6-0
vs. Stanford&	W, 5-4
vs. Arizona&	W, 5-3
vs. Georgia&	L, 4-5
WASHINGTON	W, 7-2
@ Arizona	W, 5-1
@ Arizona State	W, 5-3
HARVARD	W, 9-0
USC	W, 5-1
@ California	L, 4-5
@ Stanford	L, 3-6
PACIFIC	L, 3-5
@ USC	L, 3-5

CALIFORNIA	L, 4-5
STANFORD	L, 3-5
@ Pepperdine	W, 5-4
vs. Wake Forest%	W, 5-0
vs. Stanford%	L, 4-5

& National Team Indoors
% NCAA Championships (Malibu, Calif.)

1996

Bill Zaima -- 19-6 / 6-4 Pac-10 (3rd)

LOYOLA MARYMOUNT	W, 7-1
WASHINGTON STATE	W, 8-0
@ Arizona State	W, 7-1
@ Arizona	L, 2-5
UC IRVINE	W, 9-0
UNLV	W, 8-1
@ Pepperdine	W, 5-4
vs. South Carolina&	W, 7-0
vs. Florida&	L, 2-5
vs. Georgia&	W, 5-1
PACIFIC	W, 8-1
WILLIAM & MARY	W, 7-2
ARIZONA	L, 4-5
ARIZONA STATE	W, 6-3
USC	W, 5-1
PEPPERDINE	W, 5-4
STANFORD	L, 3-6
CALIFORNIA	W, 5-4
@ USC	W, 5-3
@ Stanford	L, 2-7
@ California	W, 5-3
vs. Vanderbilt%	W, 5-3
vs. Arizona%	W, 5-2
vs. Florida%	L, 1-5

& National Team Indoors
% NCAA Championships (Tallahassee, Fla.)

1997

Stella Sampras Webster -- 16-6 / 7-3 Pac-10 (2nd)

WASHINGTON STATE	W, 7-2
PEPPERDINE	L, 4-5
@ Arizona State	L, 4-5
@ Arizona	W, 5-4
vs. William & Mary&	W, 4-0
vs. Duke&	L, 3-4
vs. Pepperdine&	W, 4-2
BOISE STATE	W, 5-4
LOYOLA MARYMOUNT	W, 9-0
ARIZONA	W, 5-1
ARIZONA STATE	W, 6-3
@ USC	W, 6-3
WASHINGTON	W, 9-0
@ Pepperdine	W, 6-3
@ Stanford	L, 3-6
@ California	W, 5-4
USC	W, 7-2
UNLV	W, 5-1
CALIFORNIA	W, 6-3
STANFORD	L, 1-8



The 1996 Bruins

vs. Tennessee%	W, 5-0
vs. Texas%	L, 2-5

& National Team Indoors
% NCAA Championships (Palo Alto, Calif.)

1998

Stella Sampras Webster -- 17-11 / 5-3 Pac-10 (4th)

UC IRVINE	W, 9-0
UTAH	W, 7-2
@ Arizona State	L, 4-5
@ Arizona	W, 5-4
LOYOLA MARYMOUNT	W, 7-0
USC	W, 5-4
vs. William & Mary&	L, 3-6
vs. Ole Miss&	L, 4-5
vs. South Alabama&	W, 8-1
@ Pepperdine	L, 3-6
UNLV	W, 6-3
BOISE STATE	W, 8-1
@ USC	W, 5-4
@ Texas	L, 4-5
ARIZONA	W, 9-0
ARIZONA STATE	L, 1-8
PEPPERDINE	L, 4-5
STANFORD	W, 5-4
CALIFORNIA	L, 4-5
WASHINGTON	W, 6-3
WASHINGTON STATE	W, 5-4
OREGON	W, 5-1
@ California	L, 2-7
@ Stanford	L, 4-5
vs. Marquette^	W, 5-2
vs. Indiana^	W, 5-0
vs. Notre Dame^	W, 5-1
vs. Texas%	L, 0-5

& National Team Indoors
^ NCAA Regionals (Urbana-Champaign, Ill.)
% NCAA Championships (Notre Dame, Ind.)

1999

Stella Sampras Webster -- 18-8 / 5-3 Pac-10 (4th)

LOYOLA MARYMOUNT	W, 9-0
SAN DIEGO	W, 8-1
ARIZONA	W, 7-2
ARIZONA STATE	W, 7-2
@ Pepperdine	W, 5-1
@ USC	L, 3-6
vs. Georgia&	L, 2-6
vs. Notre Dame&	W, 5-4
@ Wisconsin&	W, 6-2
UNLV	W, 9-0
USC	W, 6-2
TEXAS	L, 3-6
WILLIAM & MARY	W, 5-1
@ Arizona State	W, 6-3
@ Arizona	W, 6-0
MIAMI	W, 5-4
PEPPERDINE	W, 5-4
@ Stanford	L, 1-7

@ California	L, 1-5
@ Oregon	W, 5-1
vs. Washington	W, 5-4
@ Washington State	W, 5-4
CALIFORNIA	L, 0-6
STANFORD	L, 2-7
WESTERN MICHIGAN^	W, 5-0
SOUTH ALABAMA^	L, 2-5

& National Team Indoors
^ NCAA Regionals (LATC)

2000

Stella Sampras Webster -- 17-9 / 6-2 Pac-10 (T-2nd)

FRESNO STATE	W, 7-1
CSUN	W, 6-1
@ Arizona	L, 4-5
@ Arizona State	W, 6-3
PEPPERDINE	L, 3-5
@ Oregon	W, 5-4
LOYOLA MARYMOUNT	W, 8-1
UC IRVINE	W, 7-2
@ USC	W, 5-4
@ Texas	W, 5-4
vs. Georgia	L, 4-5
ARIZONA STATE	L, 3-6
ARIZONA	W, 6-3
@ Pepperdine	L, 1-5
ILLINOIS	W, 7-2
USC	W, 6-3
STANFORD	L, 2-7
CALIFORNIA	L, 3-6
WASHINGTON	W, 7-2
WASHINGTON STATE	W, 7-2
@ California	W, 5-4
@ Stanford	L, 2-7
BOSTON UNIVERSITY^	W, 6-0
GEORGIA TECH^	W, 6-0
vs. Texas%	W, 5-2
vs. Stanford%	L, 0-5

^ NCAA Regionals (LATC)
% NCAA Championships (Malibu, Calif.)

2001

Stella Sampras Webster -- 9-18 / 4-4 Pac-10 (7th)

ARIZONA STATE	W, 4-3
ARIZONA	W, 6-1
UC IRVINE	W, 6-1
@ Pepperdine	L, 2-5
vs. Northwestern%	L, 0-7
vs. Baylor%	L, 2-5
vs. Ohio State%	L, 2-5
FRESNO STATE	L, 2-5
NEW MEXICO	L, 3-4
USC	L, 2-5
MIAMI	L, 3-4
TEXAS	L, 2-5
@ Arizona State	L, 1-6
@ Arizona	W, 4-3

ALL-TIME RESULTS (1986-2021)



The 2008 Bruins

LOYOLA MARYMOUNT	W, 6-1
@ USC	L, 1-6
PEPPERDINE	L, 3-4
@ California	L, 2-5
@ Stanford	L, 0-7
@ Washington	L, 3-4
@ Washington State	L, 3-4
CALIFORNIA	W, 4-3
STANFORD	L, 2-5
OREGON	W, 6-1
vs. Georgia Tech^	W, 4-3
@ Fresno State	W, 4-3
vs. Vanderbilt&	L, 4-1

% National Team Indoors
^ NCAA Regionals (Fresno, Calif.)
& NCAA Championships (Stone Mountain, Ga.)

2002

Stella Sampras Webster -- 19-5 / 6-2
Pac-10 (3rd)

LOYOLA MARYMOUNT	W, 7-0
PEPPERDINE	W, 6-1
UC IRVINE	W, 6-1
@ USC	W, 5-2
FRESNO STATE	W, 6-1
@ Pepperdine	W, 5-2
ARIZONA STATE	W, 4-3
ARIZONA	W, 6-1
at Texas	L, 2-4
USC	L, 3-4
OREGON	W, 7-0
DUKE	W, 4-3
@ Arizona	W, 5-2
@ Arizona State	W, 6-1
@ California	W, 5-2
@ Stanford	L, 1-6
WASHINGTON STATE	W, 5-2
WASHINGTON	W, 4-3
STANFORD	L, 1-6
CALIFORNIA	W, 6-1
SOUTHERN^	W, 4-0
WASHINGTON^	W, 4-1
vs. USC %	W, 4-1
vs. Georgia%	L, 2-4

^ NCAA Regionals (LATC)
% NCAA Championships (Palo Alto, Calif.)

2003

Stella Sampras Webster -- 16-11 / 4-4
Pac-10 (5th)

LONG BEACH STATE	W, 7-0
PEPPERDINE	W, 6-1
UC IRVINE	W, 7-0
USC	L, 3-4
vs. Tennessee&	W, 4-3
vs. Florida&	L, 3-4
vs. Georgia&	L, 3-4
@ Pepperdine	W, 4-3
FRESNO STATE	W, 4-3
@ Arizona State	L, 3-4
@ Arizona	W, 4-3

LOYOLA MARYMOUNT	W, 7-0
@ USC	L, 2-5
@ Oregon	W, 5-2
TEXAS	W, 6-1
ARIZONA	W, 6-1
ARIZONA STATE	W, 6-1
CALIFORNIA	L, 1-6
STANFORD	L, 1-6
@ Washington State	W, 4-1
@ Washington	L, 1-6
@ Stanford	L, 1-6
@ California	L, 1-6
IUPUI^	W, 4-0
PEPPERDINE^	W, 4-1
vs. Washington%	W, 4-3
vs. Duke%	L, 0-4

& National Team Indoors
^ NCAA Regionals (LATC)
% NCAA Championships (Gainesville, Fla.)

2004

Stella Sampras Webster -- 21-8 / 6-2
Pac-10 (3rd)

LOYOLA MARYMOUNT	W, 7-0
@ USC	L, 3-4
vs. North Carolina&	W, 5-2
vs. Stanford&	L, 1-6
vs. Vanderbilt&	L, 2-5
UC IRVINE	W, 7-0
FRESNO STATE	W, 4-3
ARIZONA STATE	W, 5-1
@ Pepperdine	W, 5-2
@ Texas	L, 3-4
USC	L, 2-5
OREGON	W, 6-1
@ Arizona	W, 6-1
@ Arizona State	W, 4-3
MIAMI	W, 4-3
UNLV	W, 6-1
@ California	W, 4-3
@ Stanford	L, 0-7
PEPPERDINE	W, 6-1
WASHINGTON	W, 5-2
WASHINGTON STATE	W, 6-1
STANFORD	L, 2-5
CALIFORNIA	W, 4-3
LONG BEACH STATE^	W, 4-0
PEPPERDINE^	W, 4-2
vs. USC%	W, 4-2
vs. Miami%	W, 4-3
vs. Clemson%	W, 4-0
vs. Stanford%	L, 1-4

& National Team Indoors
^ NCAA Regionals (LATC)
% NCAA Championships (Athens, Ga.)

2005

Stella Sampras Webster -- 17-6 / 6-2
Pac-10 (3rd)

LOYOLA MARYMOUNT	W, 6-1
UC IRVINE	W, 7-0



The 2008 Bruins

PEPPERDINE	W, 5-2
vs. Miami&	L, 3-4
vs. Texas A&M&	W, 4-3
vs. Clemson&	L, 3-4
FRESNO STATE	W, 7-0
@ Stanford	L, 1-6
@ California	W, 6-1
@ USC	L, 3-4
@ Washington	W, 5-2
@ Washington State	W, 6-1
TEXAS	W, 6-1
@ Arizona	W, 5-2
@ Arizona State	W, 5-2
@ Oregon	W, 5-2
CALIFORNIA	W, 5-2
STANFORD	L, 2-5
@ Pepperdine	W, 6-1
USC	W, 5-2
ILLINOIS STATE^	W, 4-0
WASHINGTON^	W, 4-0
vs. USC %	L, 3-4

& National Team Indoors
^ NCAA Regionals (LATC)
% NCAA Championships (Athens, Ga.)

2006

Stella Sampras Webster -- 15-7 / 5-3
Pac-10 (4th)

LOYOLA MARYMOUNT	W, 7-0
UC SANTA BARBARA	W, 7-0
RICE	W, 7-0
UC IRVINE	W, 7-0
@ Pepperdine	L, 3-4
STANFORD	L, 0-6
CALIFORNIA	W, 4-3
@ Arizona	W, 7-0
@ Arizona State	W, 7-0
WASHINGTON STATE	W, 7-0
WASHINGTON	W, 5-2
@ Hawaii Pacific	W, 7-0
ARIZONA STATE	W, 6-1
ARIZONA	W, 5-2
@ Stanford	L, 0-7
@ California	L, 3-4
OREGON	W, 7-0
@ USC	L, 3-4
USC	L, 2-5
vs. San Diego State^	W, 4-0
@ Pepperdine^	W, 4-0
vs. Florida%	L, 3-4

^ NCAA Regionals (Malibu, Calif.)
% NCAA Championships (Stanford, Calif.)

2007

Stella Sampras Webster -- 21-8 / 6-2 Pac-10 (2-2nd)

HAWAII	W, 7-0
CAL POLY	W, 6-1
vs. Northwestern%	L, 2-5
@ Wisconsin%	W, 6-1
vs. Clemson%	L, 3-4

FRESNO STATE	W, 7-0
UC IRVINE	W, 7-0
@ California	L, 0-7
@ Stanford	L, 3-4
@ Loyola Marymount	W, 6-1
@ Washington	W, 7-0
@ Washington State	W, 7-0
USC	L, 3-4
BAYLOR	W, 5-2
ARIZONA	W, 7-0
ARIZONA STATE	W, 6-1
@ Oregon	W, 7-0
@ Arizona State	L, 3-4
@ Arizona	W, 5-2
STANFORD	L, 3-4
CALIFORNIA	W, 4-3
PEPPERDINE	W, 6-1
@ USC	W, 4-3
vs. Quinnipiac^	W, 4-0
vs. Florida State^	W, 4-2
vs. Northwestern&	W, 4-0
vs. Florida&	W, 4-3
vs. Stanford&	W, 4-2
vs. Georgia Tech&	L, 2-4

% National Team Indoors
^ NCAA Regionals (LATC)
& NCAA Championships (Athens, Ga.)

2008

NCAA Champions
Stella Sampras Webster -- 24-5 / 7-1 Pac-10 (T-1st)

CAL POLY	W, 7-0
UC IRVINE	W, 5-2
@ Pepperdine	W, 5-2
vs. North Carolina&	L, 3-4
vs. Arkansas&	W, 4-3
vs. Clemson&	W, 5-2
Loyola Marymount	W, 7-0
Fresno State	W, 5-1
@ #52 Arizona	W, 6-1
@ #18 Arizona State	L, 3-4
BAYLOR	L, 2-5
STANFORD	W, 4-3
CALIFORNIA	L, 3-4
WASHINGTON STATE	W, 7-0
WASHINGTON	W, 7-0
@ USC	W, 6-1
@ Hawai'i	W, 7-0
OREGON	W, 7-0
@ California	W, 4-3
@ Stanford	L, 3-4
ARIZONA	W, 7-0
ARIZONA STATE	W, 7-0
USC	W, 5-2
BUFFALO^	W, 4-0
DENVER^	W, 4-0
vs. USC %	W, 4-0
vs. Arkansas%	W, 4-0

ALL-TIME RESULTS (1986-2021)



The 2014 Bruins

vs. Florida% W, 4-2
vs. California% W, 4-0

& National Team Indoors
^ NCAA Regionals (LATO)
% NCAA Championships (Tulsa, Okla.)

2009

Stella Sampras Webster -- 19-7 / 5-3
Pac-10 (4th)

CSUN W, 7-0
MINNESOTA# W, 4-0
LSU# W, 4-1
@ Pepperdine W, 5-2
vs. Florida& W, 4-3
vs. Georgia& L, 1-6
vs. Georgia Tech& L, 3-4
LOYOLA MARYMOUNT W, 6-1
HAWAII W, 6-1
PEPPERDINE W, 4-3
FRESNO STATE W, 6-1
@ Cal State Fullerton W, 7-0
USC W, 4-3
OREGON W, 6-1
ARIZONA STATE W, 4-3
@ Baylor L, 3-4
STANFORD L, 1-6
CALIFORNIA L, 1-6
@ Washington W, 5-2
@ Washington State W, 7-0
@ Arizona State W, 4-3
@ Arizona W, 4-2
@ USC L, 2-5
BOSTON UNIVERSITY^ W, 4-0
ARIZONA STATE^ W, 4-3
vs. Miami% L, 2-4

National Team Indoor Qualifying (LATO)
& National Team Indoors
^ NCAA Regionals (LATO)
% NCAA Championships (College Station, Texas)

2010

Stella Sampras Webster -- 21-4 / 6-1
Pac-10 (2nd)

PEPPERDINE W, 5-0
UNLV# W, 4-0
TULSA# W, 4-1
UC IRVINE W, 7-0
RICE W, 7-0
vs. Miami& W, 4-3
vs. California& L, 3-4
vs. Florida& W, 4-1
LOYOLA MARYMOUNT W, 7-0
CAL POLY W, 6-1
STANFORD W, 6-1
CALIFORNIA W, 4-3
@ USC W, 4-3
@ Oregon W, 7-0
@ Pepperdine W, 6-1
BAYLOR L, 3-4
WASHINGTON STATE W, 7-0
WASHINGTON W, 6-1

@ Stanford L, 2-5
ARIZONA W, 7-0
ARIZONA STATE W, 4-3
USC W, 6-1
ARMY^ W, 4-0
ARIZONA STATE^ W, 4-0
vs. Duke% L, 2-4

National Team Indoor Qualifying (LATO)
& National Team Indoors
^ NCAA Regionals (LATO)
% NCAA Championships (Athens, Ga.)

2011

Stella Sampras Webster -- 22-6 / 7-1
Pac-10 (2nd)

SAINT MARY'S W, 5-2
LOYOLA MARYMOUNT W, 7-0
SAN DIEGO# W, 4-0
SACRAMENTO STATE# W, 4-0
@ California L, 3-4
@ Stanford L, 2-5
UC IRVINE W, 7-0
CAL POLY W, 7-0
vs. Clemson& L, 3-4
vs. Miami& W, 4-2
vs. Baylor& L, 2-4
USC W, 5-2
Washington W, 6-1
Fresno State W, 6-1
Baylor W, 6-1
Stanford L, 1-6
California W, 4-3
@ Washington State W, 7-0
@ Oregon W, 6-1
@ Arizona W, 7-0
@ Arizona State W, 4-2
@ Pepperdine W, 4-3
@ USC W, 5-2
vs. Quinnipiac^ W, 4-0
vs. San Diego^ W, 4-0
vs. Virginia% W, 4-1
vs. Duke% W, 4-2
vs. Florida% L, 0-4

National Team Indoor Qualifying (LATO)
& National Team Indoors
^ NCAA Regionals (LATO)
% NCAA Championships (Stanford, Calif.)

2012

Stella Sampras Webster -- 26-3 / 8-2 Pac-12 (T-3rd)

UC IRVINE W, 7-0
UTAH# W, 4-1
SAINT MARY'S# W, 4-0
LOYOLA MARYMOUNT W, 7-0
CAL POLY W, 7-0
vs. Georgia Tech& W, 4-2
vs. Northwestern& W, 4-0
vs. USC& W, 4-0
vs. Duke& W, 4-0
@ Baylor W, 4-0
CALIFORNIA W, 4-3



The 2014 Bruins

@ USC W, 4-3
WASHINGTON STATE W, 7-0
PEPPERDINE W, 7-0
@ Colorado W, 5-2
@ Utah W, 6-1
WASHINGTON W, 5-2
OREGON W, 7-0
ARIZONA STATE W, 4-0
ARIZONA W, 5-2
@ California L, 4-3
@ Stanford W, 5-2
USC L, 6-1
EASTERN KENTUCKY^ W, 4-0
LONG BEACH STATE^ W, 4-0
vs. Rice% W, 4-0
vs. California% W, 4-1
vs. USC % W, 4-3
vs. Florida% L, 4-0

National Team Indoor Qualifying (LATO)
& National Team Indoors
^ NCAA Regionals (LATO)
% NCAA Championships (Athens, GA)

2013

Stella Sampras Webster -- 20-6 / 7-3
Pac-12 (4th)

SAN DIEGO# W, 4-0
WASHINGTON# W, 4-0
UC IRVINE W, 5-2
vs. Vanderbilt& W, 4-1
vs. Miami& W, 4-2
vs. Georgia& W, 4-1
vs. North Carolina& L, 3-4
@ California W, 4-3
@ Saint Mary's W, 4-0
@ Pepperdine W, 4-3
USC L, 2-4
UTAH W, 6-1
COLORADO W, 6-1
@ Washington State W, 6-1
@ Washington W, 7-0
STANFORD L, 3-4
CALIFORNIA L, 3-4
@ Arizona W, 5-2
@ Arizona State W, 5-2
@ Oregon W, 6-1
@ USC L, 1-6
ARMY^ W, 4-0
OKLAHOMA STATE^ W, 4-0
vs. Michigan% W, 4-0
vs. North Carolina% W, 4-1
vs. Texas A&M% L, 3-4

National Team Indoor Qualifying (LATO)
& National Team Indoors
^ NCAA Regionals (LATO)
% NCAA Championships (Urbana-Champaign, Ill.)

2014

NCAA Champions
Stella Sampras Webster -- 27-2 / 9-1
Pac-12 (2nd)

UC SANTA BARBARA W, 7-0

SAN DIEGO# W, 4-0
TCU# W, 4-1
LOYOLA MARYMOUNT W, 7-0
UC IRVINE W, 7-0
vs. Texas& W, 4-2
vs. USC& W, 4-0
vs. Northwestern& W, 4-0
vs. Duke& L, 3-4
PEPPERDINE W, 7-0
CALIFORNIA W, 4-3
@ USC W, 5-2
BAYLOR W, 4-1
@ Utah W, 5-0
@ Colorado W, 4-0
@ Washington W, 7-0
WASHINGTON STATE W, 4-0
OREGON W, 4-0
@ Stanford W, 4-3
@ California L, 3-4
ARIZONA W, 7-0
ARIZONA STATE W, 7-0
USC W, 4-1
SACRAMENTO STATE^ W, 4-0
OLE MISS^ W, 4-0
vs. Miami% W, 4-0
vs. Duke% W, 4-2
vs. Florida% W, 4-0
vs. North Carolina% W, 4-3

National Team Indoor Qualifying (LATO)
& National Team Indoors
^ NCAA Regionals (LATO)
% NCAA Championships (Athens, Ga.)

2015

Stella Sampras Webster -- 23-5 / 8-2
Pac-12 (3rd)

MARSHALL# W, 4-0
KANSAS STATE# W, 4-0
LOYOLA MARYMOUNT W, 7-0
vs. Kentucky& W, 4-0
vs. Georgia& L, 2-4
vs. Miami& W, 4-0
TCU W, 4-1
@ Saint Mary's W, 6-1
@ California L, 3-4
@ Pepperdine W, 4-3
USC W, 4-3
@ Baylor W, 4-3
@ Washington State W, 7-0
CALIFORNIA L, 3-4
STANFORD W, 5-2
@ Washington W, 6-1
@ Oregon W, 5-2
@ Arizona State W, 4-3
@ Arizona W, 7-0
COLORADO W, 7-0
UTAH W, 7-0
@ USC L, 3-4
IDAHO^ W, 4-0
NORTHWESTERN^ W, 4-0
vs. Texas A&M% W, 4-1

ALL-TIME RESULTS (1986-2021) / NCAA TOURNAMENT RESULTS (1982-85)

vs. North Carolina%	W, 4-1
vs. Georgia%	W, 4-1
vs. Vanderbilt%	L, 2-4
# National Team Indoor Qualifying (LATC)	
& National Team Indoors	
^ NCAA Regionals (LATC)	
% NCAA Championships (Waco, Texas)	

2016

Stella Sampras Webster -- 15-7 / 6-3 Pac-12 (5th)

UC IRVINE#	W, 4-0
FRESNO STATE#	L, 3-4
SAINT MARY'S	W, 6-1
NORTHWESTERN	W, 6-1
UC DAVIS	W, 4-0
CSUN	W, 4-1
PEPPERDINE	L, 1-6
CALIFORNIA	L, 2-5
USC	W, 5-2
BAYLOR	W, 4-1
WASHINGTON STATE	W, 6-1
WASHINGTON	W, 5-2
@ Stanford	L, 1-5
FRESNO STATE	W, 5-2
OREGON	W, 4-3
@ Colorado	W, 6-1
@ Utah	W, 4-2
ARIZONA STATE	L, 3-4
ARIZONA	W, 5-2
@ USC	L, 1-4
vs. Notre Dame^	W, 4-1
@ Ohio State^	L, 1-4

National Team Indoor Qualifying (LATC)
^ NCAA Regionals (Columbus, Ohio)

2017

Stella Sampras Webster -- 14-9 / 7-3 Pac-12 (T-3rd)

vs. Kentucky#	W, 4-0
@ Georgia Tech#	L, 2-4
SAINT MARY'S	W, 5-0
UC SANTA BARBARA	W, 4-0
@ San Diego	W, 5-2
@ USC	W, 4-3
@ California	L, 1-6
PEPPERDINE	L, 2-5
@ Baylor	L, 3-4
STANFORD	L, 3-4
CALIFORNIA	W, 4-3
@ Oregon	W, 4-1

@ Washington	W, 4-1
@ Washington State	W, 6-1
COLORADO	W, 4-0
UTAH	W, 4-0
@ Arizona	W, 4-1
@ Arizona State	L, 3-4
USC	L, 3-4
vs. Oregon*	L, 3-4
vs. UC Santa Barbara^	W, 4-0
@ Pepperdine^	L, 1-4

National Team Indoor Qualifying (Atlanta)
* Pac-12 Championships
^ NCAA Regionals (Malibu, Calif.)

2018

Stella Sampras Webster -- 23-6 / 9-1 Pac-12 (2nd)

UC SANTA BARBARA	W, 4-2
vs. NC State#	W, 4-0
vs. Northwestern#	W, 4-3
SAINT MARY'S	W, 4-0
vs. Texas Tech&	L, 2-4
vs. Ole Miss&	L, 3-4
vs. South Carolina&	W, 4-1
LOYOLA MARYMOUNT	W, 4-0
FRESNO STATE	W, 4-0
CALIFORNIA	W, 5-2
@ Stanford	L, 3-4
@ California	W, 4-3
OKLAHOMA STATE	L, 2-4
OREGON	W, 4-0
WASHINGTON STATE	W, 4-0
WASHINGTON	W, 4-0
@ Utah	W, 4-3
@ Colorado	W, 7-0
ARIZONA STATE	W, 4-0
ARIZONA	W, 4-0
@ Pepperdine	W, 4-3
USC	W, 4-0
vs. Oregon*	W, 4-3
vs. Arizona State*	W, 4-1
vs. Stanford*	L, 2-4
FRESNO STATE^	W, 4-0
BAYLOR^	W, 4-0
vs. Ole Miss%	W, 4-1
vs. Georgia Tech%	L, 3-4

National Team Indoor Qualifying (Lexington, Ky.)
& National Team Indoors
* Pac-12 Championships
^ NCAA Regionals (LATC)
% NCAA Championships (Winston-Salem, N.C.)

2019

Stella Sampras Webster -- 21-8 / 8-2 Pac-12 (T-2nd)

MINNESOTA#	W, 4-0
LOYOLA MARYMOUNT#	W, 4-0
@ Oklahoma State	W, 4-1
@ Tulsa	W, 4-0
vs. South Carolina%	W, 4-3
vs. North Carolina%	L, 1-4
@ Saint Mary's	W, 4-0
@ California	W, 4-3
USC	L, 1-4
@ Arizona State	W, 4-2
@ Arizona	W, 4-3
@ Pepperdine	L, 0-4
@ Oregon	W, 6-1
UC SANTA BARBARA	W, 4-0
STANFORD	L, 3-4
CALIFORNIA	W, 6-1
PEPPERDINE	L, 3-4
UTAH	W, 4-0
COLORADO	W, 4-0
@ Washington State	L, 2-4
@ Washington	W, 4-1
@ USC	W, 4-2
vs. Arizona*	W, 4-0
vs. Washington*	W, 4-3
vs. Stanford*	L, 2-4
NORTHERN ARIZONA^	W, 4-0
LSU^	W, 4-0
WASHINGTON+	W, 4-0
North Carolina%	L, 1-4

National Team Indoor Qualifying (LATC)
& National Team Indoors
* Pac-12 Championships
^ NCAA Regionals (LATC)
+ NCAA Third Round (LATC)
% NCAA Championships (Orlando, Fla.)

2020

Stella Sampras Webster -- 12-1 / 2-0 Pac-12 (--)

MINNESOTA#	W, 4-0
LOYOLA MARYMOUNT#	W, 4-0
SAINT MARY'S	W, 7-0
UC SANTA BARBARA	W, 7-0
vs. Illinois&	W, 4-0
vs. Florida State&	W, 4-0
vs. Stanford&	W, 4-0
vs. North Carolina&	L, 0-4
CALIFORNIA	W, 7-0

@ USC	W, 5-2
PEPPERDINE	W, 4-3
@ California	W, 4-3
@ Stanford	W, 4-1

Remainder of season not played due to COVID-19
National Team Indoor Qualifying (LATC)
% National Team Indoors

2021

Stella Sampras Webster -- 22-5 / 10-0 Pac-12 (1st)

CALIFORNIA#	W, 4-0
TEXAS A&M#	W, 4-0
at Oklahoma State&	W, 4-0
vs. Texas&	L, 2-4
vs. Pepperdine&	W, 4-2
at San Diego	W, 7-0
at California	L, 3-4
at USC	W, 6-1
at Washington State	W, 6-1
at Washington	W, 6-1
at Pepperdine	L, 3-4
UTAH	W, 7-0
COLORADO	W, 4-0
at Oregon	W, 4-1
at Arizona State	W, 4-3
at Arizona	W, 4-0
STANFORD	W, 7-0
CALIFORNIA	W, 7-0
PEPPERDINE	W, 5-2
USC	W, 4-0
Washington State*	W, 4-0
vs. Arizona State*	W, 4-2
vs. California*	L, 2-4
GRAND CANYON^	W, 4-0
TEXAS TECH^	W, 4-0
vs. Georgia Tech%	W, 4-0
vs. Pepperdine%	L, 3-4

National Team Indoor Qualifying (LATC)
& National Team Indoors
* Pac-12 Championships
^ NCAA Regionals (LATC)
% NCAA Championships (Orlando, Fla.)

NCAA Tournament Results (1982-85)

1982

NCAA Finish: 2nd

Round of 16	W, 9-0	vs. Arizona	Salt Lake City, Utah
Quarterfinals	W, 8-1	vs. Miami (Fla.)	Salt Lake City, Utah
Semifinals	W, 5-4	vs. USC	Salt Lake City, Utah
Final	L, 3-6	vs. Stanford	Salt Lake City, Utah

1983

NCAA Finish: T-3rd

Round of 16	W, 7-2	vs. Florida	Albuquerque, N.M.
Quarterfinals	W, 8-1	vs. Indiana	Albuquerque, N.M.
Semifinals	L, 4-5	vs. Trinity	Albuquerque, N.M.

1984

NCAA Finish: T-5th

Round of 16	W, 6-3	NORTHWESTERN	LATC
Quarterfinals	L, 1-8	STANFORD	LATC

1985

NCAA Finish: T-9th

Round of 16	L, 1-8	vs. Trinity	Oklahoma City, Okla.
-------------	--------	-------------	----------------------

Record vs. Opponents in NCAA Play (93-37)

Opponent	Overall	Home	Road	Neutral
Arizona	3-0	-	-	3-0
Arizona State	2-1	2-0	-	0-1
Arkansas	1-0	-	-	1-0
Army West Point	2-0	2-0	-	-
Baylor	1-0	1-0	-	-
Boston University	1-0	1-0	-	-
Buffalo	1-0	1-0	-	-
California	4-0	1-0	-	3-0
Clemson	1-0	-	-	1-0
Denver	1-0	1-0	-	-
Duke	2-2	-	-	2-2
Eastern Kentucky	1-0	1-0	-	-
Florida	6-8	0-1	1-1	5-6
Florida State	1-0	1-0	-	-
Fresno State	2-0	1-0	1-0	-
Georgia	1-1	-	-	1-1
Georgia Tech	3-2	1-0	-	2-2
Grand Canyon	1-0	1-0	-	-
Idaho	1-0	1-0	-	-
Illinois State	1-0	1-0	-	-
Indiana	2-0	-	-	2-0
IUPUI	1-0	1-0	-	-
Kentucky	1-0	1-0	-	-
Long Beach State	2-0	2-0	-	-
LSU	1-0	1-0	-	-
Miami (Fla.)	3-1	-	-	3-1
Michigan	1-0	-	-	1-0
North Carolina	3-1	-	-	3-1
Northern Arizona	1-0	1-0	-	-
Northwestern	3-1	2-0	-	1-1
Notre Dame	1-0	-	-	1-0
Ohio State	0-1	-	0-1	-
Ole Miss	3-0	1-0	-	2-0
Oklahoma	1-0	1-0	-	-
Pepperdine	4-2	2-0	1-1	1-1
Princeton	1-0	1-0	-	-
Quinnipiac	2-0	2-0	-	-
Rice	1-0	-	-	1-0
Sacramento State	1-0	1-0	-	-
San Diego State	2-0	1-0	-	1-0
South Alabama	0-1	0-1	-	-
South Carolina	1-0	-	-	1-0
Southern University	1-0	1-0	-	-
Stanford	1-8	0-2	0-1	1-5
Tennessee	1-0	-	-	1-0
Texas	1-2	-	-	1-2
Texas A&M	1-1	-	-	1-1
Texas Tech	1-0	1-0	-	-
Trinity	1-2	1-0	-	0-2
UC Santa Barbara	1-0	-	-	1-0
USC	6-1	-	-	6-1
Vanderbilt	1-2	-	-	1-2
Virginia	1-0	-	-	1-0
Wake Forest	1-0	-	-	1-0
Washington	4-0	3-0	-	1-0
Western Michigan	1-0	1-0	-	-
TOTALS	93-37	40-4	3-4	50-29



The 2014 Bruins

NCAA Seed History

Seed	NCAAs	Sweet 16s	Quarters	Semis	Finals	Titles
1	1	1	1	1	1	-
4	1	1	1	-	-	-
5	1	1	1	1	1	1
6	1	1	1	1	-	-
7	6	6	5	3	2	1
8	2	1	1	-	-	-
9	1	1	1	1	1	-
10	1	1	-	-	-	-
11	2	2	1	-	-	-
12	2	2	2	1	1	-
Unseeded	4	2	-	-	-	-
1982-1998	17	17	12	7	3	-
1999-Current	22	19	14	8	6	2
Overall (Since 1982)	39	36	26	15	9	2

* NCAA instituted 64-team format in 1999.
*Tournament not played in 2020 due to COVID-19



Rance Brown, Stella Sampras Webster and Bill Zaima in 2008

NCAA Tournament Year-by-Year

Year	Seed	Result	Year	Result
2021	4	Quarterfinals	1998	Round of 16
2020	-	Not played (COVID-19)	1997	Quarterfinals
2019	7	Quarterfinals	1996	Semifinals
2018	12	Quarterfinals	1995	Quarterfinals
2017	-	Second Round	1994	Round of 16
2016	-	Second Round	1993	Round of 16
2015	7	Runner-Up	1992	Quarterfinals
2014	5	Champion	1991	Runner-Up
2013	7	Semifinals	1990	Semifinals
2012	1	Runner-Up	1989	Runner-Up
2011	6	Semifinals	1988	Semifinals
2010	7	Round of 16	1987	Quarterfinals
2009	11	Round of 16	1986	Round of 16
2008	7	Champion	1985	Round of 16
2007	12	Runner-Up	1984	Quarterfinals
2006	-	Round of 16	1983	Semifinals
2005	10	Round of 16	1982	Runner-Up
2004	9	Runner-Up		
2003	11	Quarterfinals		
2002	7	Quarterfinals		
2001	-	Round of 16		
2000	8	Quarterfinals		
1999	8	Second Round		



Bruins on the WTA Tour

Name	Singles	Doubles
Jennifer Brady	13	44
Kimberly Po-Messerli	14	6
Patricia Hy-Boulais	28	36
Dana Gilbert	46	NR
Barbara Gerken	55	45
Heather Ludloff	57	37
Jane Chi	62	178
Abigail Spears	66	10
Kathrin Keil	68	209
Paula Smith	87	75
Jessica Emmons	131	71
Robin Anderson	159	183
Keri Phebus	186	147
Jennifer Fuchs	206	113
Jane Thomas	244	106
Stella Sampras	248	142
Catherine Harrison	252	113
Stephanie Chi	265	304
Karen Dewis	280	NR
Allyson Cooper	339	249
Iwalani McCalla	347	329
Yasmin Schnack	371	140
Elizabeth Schmidt	380	137
Ena Shibahara	416	5
Lynn Lewis	425	295
Brandi Freudenberg	432	380
Elizabeth Lumpkin	443	280
Chanelle Van Nguyen	447	445
Courtney Dolehide	453	486
Pamela Montez	454	355
Annica Cooper	464	379
Susie Starrett	491	292

* Career-high WTA Tour Rankings as of Jan. 10, 2022. Players are listed in order of highest singles ranking (Top 500 only).



Jennifer Brady became the first Bruin to reach a women's Grand Slam singles semifinal round when she did so at the 2020 US Open.



Former Bruin player Kimberly Po-Messerli (second from left) and her partner Nathalie Tauziat finished runner-up at the 2001 US Open, falling to Lisa Raymond and Rennae Stubbs in the championship match.



Sara Walker

Miscellaneous Singles Records

Most Wins Overall Top 20 (Since 1991)

1. Keri Phebus	144-29
2. Robin Anderson	127-25
3. Annica Cooper	120-55
4. Catherine Harrison	116-35
5. Sara Walker	115-43
6. Yasmin Schnack	106-43
7. Andrea Remynse	105-44
8. Elizabeth Lumpkin	101-41
9. Riza Zalameda	97-55
10. Jada Hart	94-41
Tracy Lin	94-58
12. Kelly Rudolph	91-44
13. Chanelle Van Nguyen	90-37
14. Jane Chi	89-24
15. Laura Gordon	87-56
16. Brandi Freudenberg	84-65
17. Ashley Joelson	83-57
Kyle McPhillips	83-35
19. Alex McGoodwin	81-46
20. Elizabeth Schmidt	79-71

Most Wins at No. 1 Singles Top 10 (Since 1991)

1. Robin Anderson	73
2. Keri Phebus	51
3. Sara Walker	38
4. Riza Zalameda	36
5. Ena Shibahara	33
6. Annica Cooper	29
7. Yasmin Schnack	28
8. Abbey Forbes	21
9. Daniela Bercek	20
10. Jane Chi	19



With the ability to hold more than 10,000 spectators, the Los Angeles Tennis Center is one of the nation's premier on-campus facilities.

Los Angeles Tennis Center

Located on the UCLA campus nestled just west of Pauley Pavilion and south of Drake Stadium is the impressive Los Angeles Tennis Center: home to both UCLA men's and women's tennis teams.

The LATC was the first large-scale outdoor tennis stadium opened in the Los Angeles metropolitan area and was officially dedicated on May 20, 1984, just in time to host the 1984 NCAA Women's Tennis Championships and the 1984 Olympic Games. Since then, the LATC has been site of several top collegiate and professional tournaments. The NCAA Women's Tennis Championships returned to the LATC in 1987 and '88, while the NCAA Men's Tennis Championships called the LATC home in 1997.

On the professional level, the LATC has been a regular stop of

the ATP Tour for many years. The first tournament held at the LATC, the Union 76 Pacific Southwest Open, featured former Bruins Jimmy Connors and Eliot Teltscher in the finals. The tournament, renamed The LA Open, continued to thrive at the LATC until 2012.

The LATC features six lighted, hard-surface courts, a 5,800-permanent seat grandstand around the three main courts and a two-level clubhouse. At full capacity, the LATC can accommodate more than 10,000 spectators. The clubhouse contains locker rooms, coaches' offices and team rooms for both the UCLA men's and women's teams, as well as offices for the Southern California Tennis Association (SCTA).

The second level of the clubhouse features a 4,000-square foot indoor dining area and kitchen. Center court is called the Times-Mirror Center Court. The stadium is named the Straus Stadium and Clubhouse.

In January of 2010, both the men's and women's teams received a complete renovation of their locker rooms.

The newest project at the LATC was completed in January of 2019, as the Katz Family Scoreboard debuted. Its Daktronics display, measuring 18 feet high and 31.2 feet wide, is among the largest LED video screens in collegiate tennis. Stationed at the east end of LATC's main stadium courts, the board features a 13HD pixel pitch and RGB LED lights. Also new to the match-day experience is a custom JBL speaker system set to improve audio on the front courts while introducing sound to the back courts.

The Katz Family Scoreboard replaced the Budge Offer Family Scoreboard, which served UCLA tennis for nearly 20 years. The Greiner Family Scoreboard was added to the back courts in 2005, enabling fans to follow the action on every court from either location.



The men's and women's locker rooms were renovated in 2010.



The Katz Family Scoreboard was unveiled in January 2019.



Martin Jarmond

Director of Athletics
2nd Year
UNC Wilmington '01

Martin Jarmond, a nationally recognized leader in college athletics, has built an impressive track record of competitive excellence, innovative

strategy and student athlete success. A two time recipient of Sports Business Journal's Forty Under 40 Award with more than 18 years in sports administration spanning three conferences, Jarmond is guiding UCLA to new heights through his culture of being ELITE – Energy, Leadership, Integrity, Toughness and Excellence. Martin's results driven strategies combined with a relentless work ethic to elevate UCLA Athletics creates an exceptional experience for student-athletes and fans alike.

Jarmond was hired on May 19, 2020, as UCLA's Alice and Nahum Lainer Family Director of Athletics, becoming the ninth athletic director in school history. Jarmond made an immediate impact on the Bruins, jumpstarting the Voting Matters Initiative, the first of its kind in the country which assisted student-athletes in discovering the tools needed to exact meaningful change through civic duty. Jarmond engineered a partnership between UCLA and Nike/Jordan, becoming only the fifth Jordan brand school in the nation and the first partnership with Nike in UCLA history. The six-year agreement between UCLA and Nike provides for 22 of the 25 UCLA varsity sports with Nike apparel, while football, men's basketball and women's basketball don Jordan. Jarmond exhibits a strong commitment to mental health awareness and his emphasis on diversity and inclusion was recognized in a 2021 SBJ award for being a national leader in diversity and inclusive hiring. In addition, Jarmond has UCLA primed to be one of the leaders in the burgeoning area of Name, Image and Likeness (NIL) which will assist student-athletes in growing brand awareness and determining their earning potential. He was also recently named as the Pac-12 Conference representative to the NCAA Division I Men's Basketball Committee for 2021-22.

Comprehensive work by Jarmond and his staff throughout the pandemic, ensured all Bruin teams could compete safely during their 2020-21 seasons. UCLA teams captured four conference titles and the men's water polo team brought national title No. 119 home to Westwood. The men's basketball team embarked on a remarkable journey which led to an appearance in the 2021 NCAA Final Four and the program's first national semifinal appearance since 2008. UCLA finished 13th nationally in the 2020-21 Learfield IMG College Director's Cup. These athletic achievements were balanced by record numbers of student-athletes earning spots on the conference all-academic squads, with 49 individuals earning a perfect 4.0 GPA for the Winter Quarter, and 131 student-athletes earning their UCLA degrees. For the first time ever, the Bruins produced multiple winners of the NCAA Elite 90 Award. Four student-athletes were recognized by CoSIDA as Academic All-Americans.

Jarmond came to UCLA from Boston College, where he served as the school's Director of Athletics for three years. During his time there, he orchestrated the Eagles' first-ever strategic plan, a comprehensive five-year goal to advance the program by fostering student-athlete formation, strengthening competitive excellence, increasing external engagement and enhancing facilities. The strategic plan was supported by BC's first-ever athletics-only capital campaign, at the time, the largest campaign of any Atlantic Coast Conference institution at \$150 million. Jarmond hired high-impact coaches in football, women's basketball, softball, volleyball, swimming & diving, men's soccer, women's soccer and fencing. Jarmond served on the NCAA Division I Men's Basketball Oversight Committee and on the John McLendon Minority Scholarship Foundation Board of Directors.

Prior to joining Boston College in 2017 and becoming the youngest athletic director of any Power Five institution at age 37, Jarmond previously served as deputy director of athletics at Ohio State, moving up the ranks after arriving as an associate athletic director for development in 2009. During his time at Ohio State, he was the lead administrator for a variety of

sports, including football and men's basketball, and directed external and internal relations and day-to-day operations. He also had responsibility for football scheduling, served on the NCAA Division I Women's Golf Committee, and was a member of the inaugural College Football Playoff National Championship Advisory Group and the Rose Bowl Advisory Committee. As Ohio State Athletics' chief advancement officer, Jarmond helped raise more than \$120 million between 2010-2012.

Jarmond was also an assistant athletic director for development for seven years at Michigan State, where he served on the athletic director's executive leadership team. He was a key member of the \$1.2 billion "Campaign for MSU" development team and a liaison between Michigan State's university development and alumni association leadership. Jarmond led the efforts to implement Scholarship Seating in football and Courtside seating in men's basketball.

A native of Fayetteville, North Carolina, Jarmond, 41, earned a bachelor's degree in communication studies from the University of North Carolina at Wilmington. A two-year captain of the men's basketball team, he led his team to the program's first-ever NCAA tournament appearance in 2000 and earned Colonial Athletic Association All-Academic honors in 2001. He holds both a M.B.A. and a master's in sports administration from Ohio University. Jarmond is married to Dr. Jessica Jarmond, a dentist. They have three daughters: Scarlett, Savannah and Serena.



Chris Carlson

Associate Athletic Director
8th Year
UC Santa Barbara '93

Chris Carlson, who previously served the men's basketball program at UCLA for five years, begins his eighth year as an Associate Athletic

Director supervising women's tennis. Carlson also supervises men's basketball, men's and women's golf and men's tennis.

Prior to returning to UCLA, Carlson worked one year as an Associate Commissioner for the West Coast Conference. Previous to that position, he was the head men's basketball coach at UC San Diego, where he guided the Tritons to the Division II NCAA Tournament in three of his six seasons.

Carlson served five years (2003-07) as Director of Operations for former UCLA basketball coach Ben Howland. At UCLA, Carlson was responsible for the day-to-day operations of the program and served as a liaison to the athletic administration and other school officials. Additionally, he assisted in scheduling and recruiting. Prior to that, Carlson served in the same capacity for two years (2002-03) at the University of Pittsburgh.

Originally from the San Diego area, Carlson joined the Pittsburgh staff (where Howland was the head coach) in the summer of 2001. Before joining Howland at Pittsburgh, Carlson was on Howland's coaching staff at Northern Arizona for one season (1998-99). Howland left NAU a year later to take the Pittsburgh head coaching position. Carlson remained at NAU for two more years (1999-2001), where he worked with the Lumberjacks' post players, along with recruiting and scheduling.

Prior to working at Northern Arizona, Carlson served as an assistant coach at his alma mater, UC Santa Barbara, from 1994-98.

Carlson was also an assistant coach at Dos Pueblos HS in Goleta from 1991-93.

His administrative basketball experience includes his one year at the West Coast Conference (2013) and 12 years as a game management assistant for the National Association of Basketball Coaches All-Star Game. Carlson has also worked four NCAA Tournament West Regionals.

Carlson is a 1993 graduate of UC Santa Barbara with a bachelor's degree in History. He is married to Karen Nance and they have two sons, Nick and Charlie. His older son, Nick, plays on the men's basketball team at Cal Poly in San Luis Obispo, Calif.



Dr. Gene Block

Chancellor
15th Year
Stanford '77

Dr. Gene Block became chancellor of UCLA in August 2007. As chief executive officer, he oversees the university's three-part mission of

education, research and service.

He has defined academic excellence, civic engagement, diversity and financial security as top priorities for his administration. A champion of public universities, his dedication to access and affordability has enhanced UCLA's position as a national leader in enrolling undergraduates who are Pell Grant recipients, come from underrepresented groups and go on to become first-generation college graduates.

Under Chancellor Block's leadership, UCLA has been named the number one public university in the United States, has grown its profile internationally and receives \$1 billion annually in research grants. In one of the largest capital campaigns ever undertaken by a public university, UCLA surpassed its \$4.2 billion Centennial fundraising goal more than a year ahead of schedule, raising \$5.49 billion total.

An expert in neuroscience, Chancellor Block's current research focuses on the effects of aging in the nervous system and how it impacts biological timing in mammals, including humans. He holds faculty appointments in psychiatry and biobehavioral sciences in the David Geffen School of Medicine at UCLA and in integrative biology and physiology in the UCLA College of Letters and Science.

Chancellor Block holds a bachelor's degree in psychology from Stanford University and a master's and Ph.D. in psychology from the University of Oregon. Before becoming chancellor of UCLA, Block served as vice president and provost of the University of Virginia, where he was also the Alumni Council Thomas Jefferson Professor of Biology. During his 29 years there, he served as vice president for research and public service and as founding director of the National Science Foundation Science and Technology Center in Biological Timing.

Chancellor Block has served on the executive boards of several leading organizations, including the Association of American Universities, National Collegiate Athletic Association, Association of Public and Land-grant Universities and the Association of Pacific Rim Universities. He is the recipient of numerous professional awards and is a member of the American Academy of Arts and Sciences and a fellow of the American Association for the Advancement of Science.

Chancellor Block is a native of Monticello, N.Y. He and his wife, Carol, have two adult children.

Women's Tennis Support Staff

Scott Alexander

Facility Operations Manager

Savanna Forry

Learning Specialist

Akemi Kitagawa Nishida

Assistant Athletic Director,
Travel Operations

Rayanne Nguyen

Olympic Sports Performance
Dietitian

Sarah Pruner

Assistant Director, Marketing

Daniel Rivas

Assistant Athletic
Performance Coach

Taylor Swearingen

Associate Athletic Director,
Development

Ruben Telliyan

College Academic
Counselor

Hector Tovar

Assistant Director, Equipment
Operations

Freddie Trujillo

Compliance Coordinator

UCLA's Primary Media Outlets

Newspapers

Los Angeles Times

202 West First St.
Los Angeles, CA 90012
(p)213-237-7145
(f)213-237-7876
latimes.com

Orange County Register

625 N. Grand Ave.
Santa Ana, CA 92711
(p)714-796-7817
(f)714-565-6765
ocregister.com

Los Angeles Daily News

21860 Burbank Blvd., Ste. 200
Woodland Hills, CA 91367
(p)818-713-3600
(f)818-713-3436
dailynews.com

Riverside Press-Enterprise

3450 14th St.
Riverside, CA 92501
(p)951-368-9533
(f)951-368-9029
pe.com

South Bay Daily Breeze

5215 Torrance Blvd.
Torrance, CA 90509
(p)310-540-4201
(f)310-540-3067
dailybreeze.com

Long Beach Press-Telegram

604 Pine Ave.
Long Beach, CA 90844
(p)562-499-1338
(f)562-437-8914
ptconnect.com

Pasadena Star-News/San Gabriel Valley Tribune

1210 N. Azusa Canyon Rd.
West Covina, CA 91790
(p)626-962-8811
(f)626-856-2758
pasadenastarnews.com
sgvtribune.com

Ventura County Star

550 Camarillo Center Dr.
Camarillo, CA 93010
(p)805-437-0277
(f)805-482-6167
venturacountystar.com

UCLA Daily Bruin

308 Westwood Plaza
Los Angeles, CA 90095
(p)310-825-2095
(f)310-206-0906
dailybruin.com

National Newspapers

Associated Press

221 So. Figueroa, Suite 300
Los Angeles, CA 90012
(p)213-626-1200
(f)213-346-0200
ap.org

USA Today

10866 Wilshire Blvd. #890
Los Angeles, CA 90024
(p)310-882-2400
(f)310-882-1901
usatoday.com

Television Stations

CBS2 (Ch. 2)/KCAL (Ch. 9)

4200 Radford Ave.
Studio City, CA 91604
(p)818-655-2400

NBC4 (Ch. 4)

3000 W. Alameda Ave.
Burbank, CA 91523
(p)818-840-4237
(f)818-840-3076

KABC (Ch. 7)

500 Circle Seven Dr.
Glendale, CA 91201
(p)818-863-7677
(f)818-863-7889

KTLA (Ch. 5)

5800 Sunset Blvd.
Hollywood, CA 90028
(p)323-460-5907
(f)323-460-5333

KTTV (Ch. 11)/KCOP (Ch. 13)

1999 S. Bundy Dr.
Los Angeles, CA 90025
(p)310-584-2030
(f)310-584-2450

Radio Stations

AM 570 LA Sports

3400 W. Olive Ave. #550
Burbank, CA 91505
(p)818-559-2252
(f)818-729-2511

Press Credentials

Media and photography credentials for UCLA home matches may be obtained by working press only by writing or calling Andrew Sinatra at the UCLA Athletic Communications Office, PO Box 24044, Los Angeles, CA 90024, (310) 206-8141, asinatra@athletics.ucla.edu. All requests should be submitted at least 24 hours in advance. Press and photo credentials can be picked up on the patio above court 2 at Los Angeles Tennis Center.

Photography

Television and photo credentials entitle video and still photographers to shoot between courts. Please consult with sports information staff to find out where the photography areas are. Flash photography is strictly forbidden.

Interview Policies

All interviews must be arranged by the Athletic Communications Office. Athletes have been instructed not to grant any interview, in person or by telephone, not arranged by the Athletic Communications Office. Telephone numbers are private and will not be released. Please do not expect team members to be available if you have not made prior arrangements.

Interview Availability

The UCLA team is scheduled to practice at Los Angeles Tennis Center. Athletes and coaches are available before or after practice, depending on class schedules.

Travel Information

For security purposes, the UCLA Athletic Communications Office does not release to the general public any travel information for UCLA athletic teams. If you would like to reach a member of the UCLA women's tennis team on the road, please contact the Athletic Communications Office.

Obtaining Information

UCLA women's tennis news, results, statistics, biographies, and more can be found at uclabruins.com.

Los Angeles Tennis Center

Located on the UCLA campus just west of Pauley Pavilion and south of Drake Stadium, the Los Angeles Tennis Center is easily accessible from Lots 4, 8, and 7.



Ayan Broomfield (left) and Gabby Andrews after winning the NCAA doubles title in 2019

Stay Connected:



facebook.com/UCLAWomensTennis

@UCLAWTennis