

SIMPLY CLEVER

ŠKODA



The ŠKODA Fabia



Effective: May 2014

Welcome to the Fabia

The Fabia; what is it?

The Fabia is a small city car that offers you the space and versatility required for everyday life. With space for 5 people and still enough room in the back for your luggage, the Fabia is the ideal small family car. It's as happy doing 30mph through town on the school run as it is doing 70mph on the motorway and of course, at its core is the traditional ŠKODA offer of value for money and that legendary "extra bit of car".

Versatility across the range.

Unlike many of its competitors, the Fabia is available in hatch and estate. With seven different trim levels, six petrol engines, four diesel engines and a DSG gearbox, there will be a Fabia in the range that suits you.

Driving Position.

As we spend more and more time in our cars, being comfortable is essential. With this in mind, the Fabia has been designed with a high driving position, allowing greater visibility of the road ahead, more headroom, and not to mention making it easier for you to get in and out of. From entry level the Fabia also comes with an adjustable driver's seat and a height and reach adjustable steering wheel so you will find getting a comfortable and safe driving position easy.

Boot space.

The Fabia continues to impress even in the boot where, with the seats up, the hatch offers 315 litres of space while the estate offers a whopping 505 litres. With the seats down, the hatch and estate have 1,180 litres and 1,485 litres of space respectively. So regardless of whether it's the weekly shop, the annual holiday, or a trip to the garden centre, the Fabia's boot won't be lacking the space you need.

Music.

In addition to the standard radio, every Fabia comes with a 3.5mm aux in socket. With the addition of a cable, this allows MP3 players to be connected to the car, meaning that you can listen to your MP3 player through the car radio. There is also an optional MDI (Multi Device Interface) cable. This enables you to connect a variety of music players through the purchase of additional cables (through retailer supplied accessories) from ipods to devices with USB or mini USB ports.



The Fabia was refreshed in March 2010, giving the car a more dynamic appearance. The main changes were to the front, a redesigned, wider front grille and newly designed headlights optically widen the car, strengthening the horizontal lines and increasing its road presence. The sculpted bonnet and wraparound windscreen with black A pillars and 'floating' roof remain, providing an air of style, elegance and contemporary design.

The modern exterior is matched by the updated interior. Newly designed stereos, steering wheels and upholsteries improve the feeling of style and quality in the Fabia - soft touch surfaces and ergonomically laid out controls make the car a joy to drive. With outstanding boot space, headroom and legroom, not to mention lots of room for luggage, driver and passengers can travel in comfort.

The biggest change for Fabia was under the bonnet. Cleaner and more efficient petrol and diesel engines offer the driver a suitable engine for every situation. TSI petrol engines offer a great blend of power and torque combined with low CO₂ and improved fuel economy, whilst the range of 'Common Rail' diesel engines emit just 109g/km of CO₂, helping to reduce the impact on the environment.

The Fabia GreenLine II is fitted with technological advancements such as a Stop/start system, gear change recommendation and energy recovery, improving economy and lowering CO₂ emissions even further. These advancements mean the Fabia GreenLine II emits just 88 g/km CO₂, with a combined fuel economy of 83.1 mpg making it the most economical ŠKODA ever!

So now the introduction to the Fabia is over, why not take a look in a little more detail?

The ŠKODA Fabia S

Hatchback	CO ₂ (g/km)	VED Band**	Insurance Group (50)	Recommended Basic	VAT	RRP	Recommended OTR*	Business user information BiK 2014/15	P11D Value
1.2 12V 60PS 5spd	128	D	3E	£7,816.67	£1,563.33	£9,380.00	£9,945.00	18%	£9,890.00
1.2 TSI 105PS 7spd DSG	124	D	12E	£10,391.67	£2,078.33	£12,470.00	£13,035.00	17%	£12,980.00
1.6 TDI CR 75PS 5spd DPF	109	B	7E	£9,887.50	£1,977.50	£11,865.00	£12,430.00	17%	£12,375.00
Estate									
1.2 12V 69PS 5spd	128	D	4E	£9,208.33	£1,841.67	£11,050.00	£11,615.00	18%	£11,560.00
1.6 TDI CR 75PS 5spd DPF	109	B	7E	£10,400.00	£2,080.00	£12,480.00	£13,045.00	17%	£12,990.00

Standard Equipment

15" 'Satellite' steel wheels (6J x 15"195/55 R15 85H)	Category 1 alarm with tilt sensor Delayed interior lighting	Folding grab handles in the roof frame	Manually adjustable door mirrors	Roof aerial with second antenna in windscreen for FM2 signal
1.5-litre drinks holder in front door panels	Driver and passenger front and side airbags	Halogen headlights	Manually controlled heating system	Split folding rear seats (60%/40%)
3 point seat belts with seat belt tensioners and height adjustment (front)	Passenger airbag de-activation switch	Headlight range adjustment	Pollen filter	Ticket holder
3 point seat belts in the rear	Driver and passenger vanity mirrors	Heated rear window	Power steering	Tyre Pressure Monitor
3.5mm aux. socket (for MP3 players etc.)	Driver door mirror (aspherical) providing an increased field of view	Height adjustable driver's seat	Preparation for ISOFIX	Tyre repair kit (no spare wheel) †
3 spoke steering wheel	Electric front windows	Height adjustable head restraints (front & rear x2)	Radio 'Swing' 2DIN with single CD and 4 speakers (can play MP3 recordings)	Windscreen wiper with Intermittent control (4 speed)
ABS (Anti-lock Braking System)	ESC Inc. ABS +ASR+EDL+HBA	Height and reach adjustable steering wheel	Recommended Gearbox Indicator	
Black door mirrors and door handles	Exterior temperature gauge	HHC (Hill hold control) (1.2 TSI 105PS DSG only)	Remote central locking	
Body coloured bumpers		Interior rear view mirror with dimming facility	Rear drum brakes	
			Rear fog light	
			Rear wiper with intermittent control	
			Retractable parcel shelf (Estate only)	

For offers visit skoda.co.uk/offers

† A temporary spare wheel can be ordered as an option. If added the tyre repair kit will be removed. For further details please check page 22.



Band	CO ₂ (g/km)	First 12 Months ¹	Standard VED ²
A	Up to 100	£0	£0
B	101 - 110	£0	£20
C	111 - 120	£0	£30
D	121 - 130	£0	£110
E	131 - 140	£130	£130
F	141 - 150	£145	£145
G	151 - 165	£180	£180
H	166 - 175	£290	£205
I	176 - 185	£345	£225
J	186 - 200	£485	£265
K	201 - 225	£635	£285
L	226 - 255	£860	£485
M	Over 255	£1,090	£500

OTR (Recommended On The Road)
Recommended 'On the Road' prices include delivery, 12 months Road Fund Licence, DVLA First registration Fee (at £55), and apply to the United Kingdom only.

VED (Vehicle Excise Duty)
All vehicles will be subject to Vehicle Excise Duty based on the fuel type of the vehicle and its carbon dioxide (CO₂) emissions level, measured in grams per kilometre (g/km). Due to changes in vehicle emissions data, CO₂ figures may differ on these vehicles if taken from current ŠKODA UK stock. The VED bands are shown in the table opposite.

¹ First year vehicle licence rates for petrol and diesel cars purchased on or after 1st April 2014. First year rate or 'showroom tax' applies to new car purchases only.

² Rate reverts to the Government's applicable Standard VED rate in subsequent years.

Edition:UK 1st April 2014. VAT is calculated at 20%. Please confirm figures with your ŠKODA Retailer.

Company car tax is based on your cars carbon dioxide emissions. The higher the car's emissions, the higher its tax liability. When a company car is made available for private use a 'Benefit in Kind' value is calculated for tax purposes.

To help you work out your tax liability please refer to page 30.

P11D (Expenses and Benefits)

The P11D value is calculated by taking the On The Road (OTR) price for the vehicle, less the Road Fund Licence (RFL) and First Registration Fee (FRF).

BiK (Benefit in Kind)
The BiK percentage value is based on the CO₂ emissions of the vehicle for the current tax year 2014/2015.

ŠKODA GreenLine II Technology

A combination of innovative technology and practical design features ensure that the Fabia GreenLine II is highly efficient and environmentally friendly. Below is an explanation of the technology present in the Fabia GreenLine II and how it works to keep fuel costs down and environmental impact low.



Fabia GreenLine comes with a **1.2 TDI CR 75PS DPF** engine. The economical three cylinder 1.2 TDI diesel engine in the GreenLine II produces just 88 g/km CO₂ which means road tax is totally free!

The Fabia GreenLine II has a combined fuel economy of 83.1 mpg, making the Fabia GreenLine II the most frugal ŠKODA ever made!



Energy Recovery. Energy recovery is the process of converting kinetic energy (energy created through movement) back into usable electricity, which is either stored in the battery, or immediately used again by electrical components on the vehicle.

Depending on driving style, electrical energy is supplied to the vehicle by the alternator or directly by the battery. The principle of energy recovery is to reduce the load on the engine and therefore contribute to lower emissions and reduced fuel consumption.



Low rolling resistance tyres. The Fabia GreenLine II has 15" 'Rotare' alloys (6J x 15" 185/60 R15 84H) these lighter alloy wheels with low rolling resistance tyres have a higher prescribed air pressure to reduce friction.



Stop/start System. This innovative system turns off the engine when it is not needed, for example when the driver is stopped at traffic lights or in heavy traffic.

When a normal car is stationary, the engine will idle, which in turn consumes fuel and generates emissions. The Stop/start system cleverly cuts out this unnecessary work by stopping the engine automatically when the car is stationary, in neutral and the clutch pedal is released.

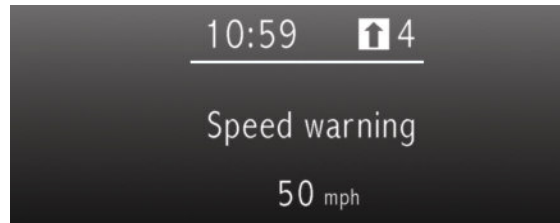
The Stop/start system does not inhibit a quick getaway either. As soon as the driver presses the clutch to put the vehicle in gear, the engine immediately starts up so acceleration is as instant as if the car had been idling.



Aerodynamics. One of the simplest ways to improve fuel efficiency and reduce emissions, is to create a more aero-dynamic vehicle. The Fabia GreenLine II model has changes to the rear spoiler that improve the car's efficiency without compromising on style.

To keep the weight and drag of the GreenLine II models down to a minimum and thus ensure the model is as efficient as possible, there is a reduced list of options available.

However, the comfort and safety of all occupants has not been compromised and so important features like airbags and air conditioning have been retained.



Gear change recommendations. The recommended gear feature on the trip computer or Maxi-dot display shows the driver whether the gear they are in is appropriate or whether they need to change up or down.

The aim is to help the driver achieve optimum engine speed and reduce fuel consumption.

The ŠKODA Fabia GreenLine II

Hatchback	CO ₂ (g/km)	VED Band**	Insurance Group (50)	Recommended Basic	VAT	RRP	Recommended OTR*	Business user information	
								BiK 2014/15	P11D Value
1.2 TDI CR 75PS 5spd DPF	88	A	8E	£11,425.00	£2,285.00	£13,710.00	£14,275.00	14%	£14,220.00
Estate									
1.2 TDI CR 75PS 5spd DPF	88	A	8E	£11,937.50	£2,387.50	£14,325.00	£14,890.00	14%	£14,835.00

Standard Equipment (over Fabia S)

15" 'Rotare' alloys with anti theft locking wheel bolts (6J x 15" 185/60 R15 84H) Low rolling resistance tyres
Additional 4 speakers in rear
Black roof rails (Estate only)
Body coloured handles and door mirrors
Chrome surround on radiator grille
Cruise control
Electrically heated and adjustable door mirrors
Energy recovery
Front fog lights
Gear change recommendation
Glovebox cover

Halogen headlights with DE module
Height adjustable passenger seat
Hill hold control
Load securing loops in luggage space
Manual air conditioning
MDI (Multi device interface) and cable for connecting MP3 players†
Rear disc brakes
Side and rear windows in tinted glass
Stop/start function
Tinted windscreen
Trip computer
Tyre pressure monitor (TPM)
Tyre repair kit (spare wheel not available)



Model shown with optional equipment black protective side mouldings

For offers visit skoda.co.uk/offers

† Retailer supplied

Band	CO ₂ (g/km)	First 12 Months ¹	Standard VED ²
A	Up to 100	£0	£0
B	101 - 110	£0	£20
C	111 - 120	£0	£30
D	121 - 130	£0	£110
E	131 - 140	£130	£130
F	141 - 150	£145	£145
G	151 - 165	£180	£180
H	166 - 175	£290	£205
I	176 - 185	£345	£225
J	186 - 200	£485	£265
K	201 - 225	£635	£285
L	226 - 255	£860	£485
M	Over 255	£1,090	£500

OTR (Recommended On The Road)
Recommended 'On the Road' prices include delivery, 12 months Road Fund Licence, DVLA First registration Fee (at £55), and apply to the United Kingdom only.

VED (Vehicle Excise Duty)
All vehicles will be subject to Vehicle Excise Duty based on the fuel type of the vehicle and its carbon dioxide (CO₂) emissions level, measured in grams per kilometre (g/km). Due to changes in vehicle emissions data, CO₂ figures may differ on these vehicles if taken from current ŠKODA UK stock. The VED bands are shown in the table opposite.

¹ First year vehicle licence rates for petrol and diesel cars purchased on or after 1st April 2014. First year rate or 'showroom tax' applies to new car purchases only.

² Rate reverts to the Government's applicable Standard VED rate in subsequent years.
Edition: UK 1st April 2014. VAT is calculated at 20%. Please confirm figures with your ŠKODA Retailer.

Company car tax is based on your cars carbon dioxide emissions. The higher the car's emissions, the higher its tax liability. When a company car is made available for private use a 'Benefit in Kind' value is calculated for tax purposes.

To help you work out your tax liability please refer to page 30.

P11D (Expenses and Benefits)

The P11D value is calculated by taking the On The Road (OTR) price for the vehicle, less the Road Fund Licence (RFL) and First Registration Fee (FRF).

BiK (Benefit in Kind)
The BiK percentage value is based on the CO₂ emissions of the vehicle for the current tax year 2014/2015.

The ŠKODA Fabia SE

Hatchback	CO ₂ (g/km)	VED Band**	Insurance Group (50)	Recommended Basic	VAT	RRP	Recommended OTR*	Business user information	
								BiK 2014/15	P11D Value
1.2 12V 69PS 5spd	128	D	5E	£9,512.50	£1,902.50	£11,415.00	£11,980.00	18%	£11,925.00
1.2 TSI 86PS 5spd	121	D	9E	£9,987.50	£1,997.50	£11,985.00	£12,550.00	17%	£12,495.00
1.2 TSI 105PS 7spd DSG	124	D	13E	£11,170.83	£2,234.17	£13,405.00	£13,970.00	17%	£13,915.00
1.6 TDI CR 75PS 5spd DPF	109	B	8E	£10,666.67	£2,133.33	£12,800.00	£13,365.00	17%	£13,310.00
1.6 TDI CR 105PS 5spd DPF	109	B	14E	£11,345.83	£2,269.17	£13,615.00	£14,180.00	17%	£14,125.00
Estate									
1.2 TSI 86PS 5spd	121	D	9E	£10,695.83	£2,139.17	£12,835.00	£13,400.00	17%	£13,345.00
1.2 TSI 105PS 5spd	124	D	13E	£11,245.83	£2,249.17	£13,495.00	£14,060.00	17%	£14,005.00
1.2 TSI 105PS 7spd DSG	124	D	13E	£11,879.17	£2,375.83	£14,255.00	£14,820.00	17%	£14,765.00
1.6 TDI CR 90PS 5spd DPF	109	B	12E	£11,866.67	£2,373.33	£14,240.00	£14,805.00	17%	£14,750.00
1.6 TDI CR 105PS 5spd DPF	109	B	14E	£12,054.17	£2,410.83	£14,465.00	£15,030.00	17%	£14,975.00

Standard Equipment (over Fabia S)

15" 'Rotare' alloys with anti-theft locking wheel bolts (6) x 15" 195/55 R15 85H)	Halogen projector headlights with DE module
12V socket in boot (Estate only)	Height adjustable passenger seat
3 spoke steering wheel with chrome detail	Leather gearknob (DSG only)
Additional 4 speakers in rear	Load securing loops in luggage space
Black roof rails (Estate only)	Manual air conditioning
Body coloured door handles and mirrors	Side and rear windows in tinted glass
Chrome surround on radiator grille	Stowage box in boot
Electrically heated and adjustable door mirrors	Tinted windscreen
Glovebox cover	Trip computer

For offers visit skoda.co.uk/offers



Model shown with optional equipment (front fog lights, black protective side mouldings)

The ŠKODA Fabia Elegance

Hatchback	CO ₂ (g/km)	VED Band**	Insurance Group (50)	Recommended Basic	VAT	RRP	Recommended OTR*	Business user information	
								BiK 2014/15	P11D Value
1.2 TSI 105PS 5spd	124	D	13E	£11,441.67	£2,288.33	£13,730.00	£14,295.00	17%	£14,240.00
1.2 TSI 105PS 7spd DSG	124	D	13E	£12,075.00	£2,415.00	£14,490.00	£15,055.00	17%	£15,000.00
1.6 TDI CR 90PS 5spd DPF	109	B	12E	£12,062.50	£2,412.50	£14,475.00	£15,040.00	17%	£14,985.00
1.6 TDI CR 105PS 5spd DPF	109	B	14E	£12,250.00	£2,450.00	£14,700.00	£15,265.00	17%	£15,210.00
Estate									
1.2 TSI 105PS 5spd	124	D	13E	£12,150.00	£2,430.00	£14,580.00	£15,145.00	17%	£15,090.00
1.2 TSI 105PS 7spd DSG	124	D	13E	£12,783.33	£2,556.67	£15,340.00	£15,905.00	17%	£15,850.00
1.6 TDI CR 105PS 5spd DPF	109	B	14E	£12,958.33	£2,591.67	£15,550.00	£16,115.00	17%	£16,060.00

Standard Equipment (over SE)

16" 'Comet' alloys with anti-theft locking wheel bolts (6.5) x 16" 205/45 R16 83W)	Curtain airbags
3 spoke leather steering wheel, gearknob and gaiter	Floor mats
Air conditioned glovebox	Front armrest
Climate control air conditioning	Front fog lights
Cruise control	Glasses storage compartment
	Maxi-dot trip computer

For offers visit skoda.co.uk/offers

A temporary space saver wheel can be ordered as an option. If added the tyre repair kit will be removed. For further details please check page 22.

Band	CO ₂ (g/km)	First 12 Months ¹	Standard VED ²
A	Up to 100	£0	£0
B	101 - 110	£0	£20
C	111 - 120	£0	£30
D	121 - 130	£0	£110
E	131 - 140	£130	£130
F	141 - 150	£145	£145
G	151 - 165	£180	£180
H	166 - 175	£290	£205
I	176 - 185	£345	£225
J	186 - 200	£485	£265
K	201 - 225	£635	£285
L	226 - 255	£860	£485
M	Over 255	£1,090	£500

OTR (Recommended On The Road)
Recommended 'On the Road' prices include delivery, 12 months Road Fund Licence, DVLA First registration Fee (at £55), and apply to the United Kingdom only.

VED (Vehicle Excise Duty)
All vehicles will be subject to Vehicle Excise Duty based on the fuel type of the vehicle and its carbon dioxide (CO₂) emissions level, measured in grams per kilometre (g/km). Due to changes in vehicle emissions data, CO₂ figures may differ on these vehicles if taken from current ŠKODA UK stock. The VED bands are shown in the table opposite.

¹ First year vehicle licence rates for petrol and diesel cars purchased on or after 1st April 2014. First year rate or 'showroom tax' applies to new car purchases only.

² Rate reverts to the Government's applicable Standard VED rate in subsequent years.

Edition: UK 1st April 2014. VAT is calculated at 20%. Please confirm figures with your ŠKODA Retailer.

Company car tax is based on your cars carbon dioxide emissions. The higher the car's emissions, the higher its tax liability. When a company car is made available for private use a 'Benefit in Kind' value is calculated for tax purposes.

To help you work out your tax liability please refer to page 30.

P11D (Expenses and Benefits)

The P11D value is calculated by taking the On The Road (OTR) price for the vehicle, less the Road Fund Licence (RFL) and First Registration Fee (FRF).

BiK (Benefit in Kind)
The BiK percentage value is based on the CO₂ emissions of the vehicle for the current tax year 2014/2015.

The ŠKODA Fabia Scout

Estate	CO ₂ (g/km)	VED Band**	Insurance Group (50)	Recommended Basic	VAT	RRP	Recommended OTR*	Business user information BiK 2014/15	P11D Value
1.2 TSI 86PS 5spd	121	D	9E	£11,587.50	£2,317.50	£13,905.00	£14,470.00	17%	£14,415.00
1.6 TDI CR 105PS 5spd DPF	109	B	15E	£12,945.83	£2,589.17	£15,535.00	£16,100.00	17%	£16,045.00

Standard equipment (over Fabia SE)

16" 'Scout' alloys (6.5) x 16" 205/45 R16 83W)	Protective body mouldings
3 spoke leather steering wheel, handbrake and gearknob	'Scout' design textile floor mats
Cruise control	'Scout' upholstery
Electric rear windows	Silver coloured roof rails
Front armrest	Stainless steel pedal set
Integrated front fog lights	Sunset glass (from the B-pillar back)

For offers visit skoda.co.uk/offers

A temporary space saver wheel can be ordered as an option. If added the tyre repair kit will be removed. For further details please check page 22.

Band	CO ₂ (g/km)	First 12 Months ¹	Standard VED ²	OTR (Recommended On The Road)	VED (Vehicle Excise Duty)
A	Up to 100	£0	£0	Recommended 'On the Road' prices include delivery, 12 months Road Fund Licence, DVLA First registration Fee (at £55), and apply to the United Kingdom only.	All vehicles will be subject to Vehicle Excise Duty based on the fuel type of the vehicle and its carbon dioxide (CO ₂) emissions level, measured in grams per kilometre (g/km). Due to changes in vehicle emissions data, CO ₂ figures may differ on these vehicles if taken from current ŠKODA UK stock. The VED bands are shown in the table opposite.
B	101 - 110	£0	£20		
C	111 - 120	£0	£30		
D	121 - 130	£0	£110		
E	131 - 140	£130	£130		
F	141 - 150	£145	£145		
G	151 - 165	£180	£180		
H	166 - 175	£290	£205		
I	176 - 185	£345	£225		
J	186 - 200	£485	£265		
K	201 - 225	£635	£285		
L	226 - 255	£860	£485		
M	Over 255	£1,090	£500		

¹ First year vehicle licence rates for petrol and diesel cars purchased on or after 1st April 2014. First year rate or 'showroom tax' applies to new car purchases only.

² Rate reverts to the Government's applicable Standard VED rate in subsequent years.

Edition:UK 1st April 2014. VAT is calculated at 20%. Please confirm figures with your ŠKODA Retailer.

Company car tax is based on your cars carbon dioxide emissions. The higher the car's emissions, the higher its tax liability. When a company car is made available for private use a 'Benefit in Kind' value is calculated for tax purposes.

To help you work out your tax liability please refer to page 30.

P11D (Expenses and Benefits)

The P11D value is calculated by taking the On The Road (OTR) price for the vehicle, less the Road Fund Licence (RFL) and First Registration Fee (FRF).

BiK (Benefit in Kind)
The BiK percentage value is based on the CO₂ emissions of the vehicle for the current tax year 2014/2015.



Picture shown is not UK specification

The ŠKODA Fabia Monte Carlo

Hatchback	CO ₂ (g/km)	VED Band**	Insurance Group (50)	Recommended Basic	VAT	RRP	Recommended OTR*	Business user information BiK 2014/15	P11D Value
1.2 TSI 86PS 5spd	121	D	9E	£11,254.17	£2,250.83	£13,505.00	£14,070.00	17%	£14,015.00
1.2 TSI 105PS 5spd	124	D	13E	£11,804.17	£2,360.83	£14,165.00	£14,730.00	17%	£14,675.00
1.6 TDI CR 105PS 5spd	109	B	15E	£12,612.50	£2,522.50	£15,135.00	£15,700.00	17%	£15,645.00

Estate	CO ₂ (g/km)	VED Band**	Insurance Group (50)	Recommended Basic	VAT	RRP	Recommended OTR*	Business user information BiK 2014/15	P11D Value
1.2 TSI 86PS 5spd	121	D	9E	£11,650.00	£2,330.00	£13,980.00	£14,545.00	17%	£14,490.00
1.2 TSI 105PS 5spd	124	D	13E	£12,200.00	£2,440.00	£14,640.00	£15,205.00	17%	£15,150.00
1.6 TDI CR 105PS 5spd	109	B	15E	£13,008.33	£2,601.67	£15,610.00	£16,175.00	17%	£16,120.00

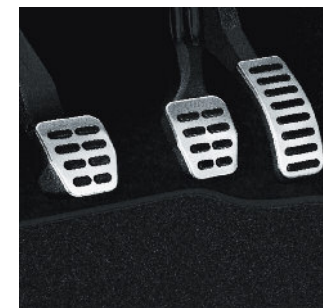
Standard Equipment

17" 'Trinity' alloys (7) x 17" 205/40 R17 84W)	Driver and passenger vanity mirrors	MDI (Multi Device Interface) and cable for connecting MP3 players††
1.5-litre drinks holder in front door panels	Driver door mirror (aspherical) provides an increased field of view. Passenger convex.	Perforated leather sports steering wheel with red stitching
3.5mm aux. socket (for MP3 players etc.)	Driver seat belt warning light	Pollen filter
3 point seat belts with seat belt tensioners and height adjustment (front).	Electric front windows	Power steering
3 point seat belts (rear)	Electrically heated and adjustable door mirrors	Preparation for ISOFIX
8 speakers	Exterior temperature gauge	Radio 'Swing' 2DIN with single CD, can play MP3 recordings
ABS (Anti-lock Braking System)	Folding grab handles in the roof frame	Rear diffuser (black)
Black gloss door mirrors	Front and side windows in tinted glass	Rear drum brakes
Black gloss wheel arch and front spoiler mouldings	Front fog lights	Rear fog light
Black roof and tailgate spoiler (Hatch only)	Glovebox cover	Rear wiper with intermittent control
Black Roof Rails (Estate only)	Headlight range adjustment	Remote central locking
Black smoked halogen projector headlights with DE module	Heated rear window	Roof aerial with second antenna in windscreen for FM2 signal
Body coloured bumpers and door handles	Height adjustable driver and passenger seats	Split folding rear seats (60%/40%)
Category 1 alarm with tilt sensor	Height adjustable head restraints (front & rear x2)	Sports seats (Onyx)
Darkened chrome on top of radiator grille	Height and reach adjustable steering wheel	Sports suspension
Delayed interior lighting	Interior rear view mirror with dimming facility	Steel sports pedals and kick plate
Driver and passenger front and side airbags with passenger airbag de-activation switch	Leather gearknob and handbrake with red stitching	Stowage box in boot
	Load securing loops in luggage space	Sunset glass (from B-pillar back)
	Manual air conditioning	Ticket holder
		Trip computer
		Tyre repair kit (no spare wheel)†
		Windscreen wiper with Intermittent control (4 speed)

For offers visit skoda.co.uk/offers

† A temporary 'Space saver' spare wheel can be ordered as an option. If added the tyre repair kit will be removed. For further details please check page 22.

†† Retailer supplied



Band	CO ₂ (g/km)	First 12 Months ¹	Standard VED ²
A	Up to 100	£0	£0
B	101 - 110	£0	£20
C	111 - 120	£0	£30
D	121 - 130	£0	£110
E	131 - 140	£130	£130
F	141 - 150	£145	£145
G	151 - 165	£180	£180
H	166 - 175	£290	£205
I	176 - 185	£345	£225
J	186 - 200	£485	£265
K	201 - 225	£635	£285
L	226 - 255	£860	£485
M	Over 255	£1,090	£500

OTR (Recommended On The Road)

Recommended 'On the Road' prices include delivery, 12 months Road Fund Licence, DVLA First registration Fee (at £55), and apply to the United Kingdom only.

VED (Vehicle Excise Duty)

All vehicles will be subject to Vehicle Excise Duty based on the fuel type of the vehicle and its carbon dioxide (CO₂) emissions level, measured in grams per kilometre (g/km). Due to changes in vehicle emissions data, CO₂ figures may differ on these vehicles if taken from current ŠKODA UK stock. The VED bands are shown in the table opposite.

¹ First year vehicle licence rates for petrol and diesel cars purchased on or after 1st April 2014. First year rate or 'showroom tax' applies to new car purchases only.

² Rate reverts to the Government's applicable Standard VED rate in subsequent years.

Edition: UK 1st April 2014. VAT is calculated at 20%. Please confirm figures with your ŠKODA Retailer.

Company car tax is based on your cars carbon dioxide emissions. The higher the car's emissions, the higher its tax liability. When a company car is made available for private use a 'Benefit in Kind' value is calculated for tax purposes.

To help you work out your tax liability please refer to page 30.

P11D (Expenses and Benefits)

The P11D value is calculated by taking the On The Road (OTR) price for the vehicle, less the Road Fund Licence (RFL) and First Registration Fee (FRF).

BiK (Benefit in Kind)
The BiK percentage value is based on the CO₂ emissions of the vehicle for the current tax year 2014/2015.

The ŠKODA Fabia vRS

Hatchback	CO ₂ (g/km)	VED Band**	Insurance Group (50)	Recommended Basic	VAT	RRP	Recommended OTR*	Business user information BiK 2014/15	P11D Value
1.4 TSI 180PS 7spd DSG	148	F	27E	£14,037.50	£2,807.50	£16,845.00	£17,555.00	22%	£17,355.00
Estate									
1.4 TSI 180PS 7spd DSG	148	F	27E	£14,745.83	£2,949.17	£17,695.00	£18,405.00	22%	£18,205.00

Standard equipment

- 17" 'Gigaro' alloy wheels (7) x 17" 205/40 R17 84W
- 12V socket in boot (Estate only)
- 3 point seat belts with seat belt tensioners and height adjustment (front)
- 3 spoke multi-function leather sports steering wheel with paddles and controls for radio
- Black gloss front grille
- Black gloss headlights
- Black painted door mirrors
- Black roof rails (Estate only)
- Body coloured bumpers
- Body coloured door handles
- Category 1 alarm with tilt sensor
- Chrome kick plates in front door sills
- Delayed interior lighting
- Driver and passenger vanity mirrors
- Driver door mirror (aspherical) providing an increased field of view
- Driver seat belt warning light
- Electric front windows
- Electrically heated and adjustable door mirrors
- ESC+HHC+TPM+XDS (ESC with Hill Hold Control, Tyre Pressure Monitor and Electronically Controlled Differential)
- Folding grab handles in the roof frame
- Glovebox cover
- Halogen projector headlights with DE module
- Headlight range adjustment
- Heated rear window
- Height adjustable driver and passenger seat
- Height adjustable headrests in rear (two)
- Interior rear view mirror with dimming facility
- Leather gearknob
- Leather hand brake
- LED daylight running lights
- Load securing loops in luggage space
- Manual air conditioning
- Maxi-dot trip computer
- MDI (Multi device interface) and cable for connecting MP3 players†
- Pollen filter
- Radio 'Swing' 2DIN CD and 8 speakers (can play MP3 recordings)
- Rear chrome double exhaust pipe
- Rear fog light
- Rear tailgate spoiler
- Rear wiper with intermittent control
- Rear disc brakes with red brake callipers
- Remote central locking with alarm and tilt sensor
- Retractable parcel shelf (Estate only)
- Sports suspension
- Steel sports pedals
- Sunset glass (from the B-pillar back)
- Temporary 'Space saver' spare wheel
- vRS Bodykit
- vRS sports seats with logo
- Windscreen wiper with Intermittent control (4 speeds)



Band	CO ₂ (g/km)	First 12 Months ¹	Standard VED ²
A	Up to 100	£0	£0
B	101 - 110	£0	£20
C	111 - 120	£0	£30
D	121 - 130	£0	£110
E	131 - 140	£130	£130
F	141 - 150	£145	£145
G	151 - 165	£180	£180
H	166 - 175	£290	£205
I	176 - 185	£345	£225
J	186 - 200	£485	£265
K	201 - 225	£635	£285
L	226 - 255	£860	£485
M	Over 255	£1,090	£500

OTR (Recommended On The Road)
Recommended 'On the Road' prices include delivery, 12 months Road Fund Licence, DVLA First registration Fee (at £55), and apply to the United Kingdom only.

VED (Vehicle Excise Duty)
All vehicles will be subject to Vehicle Excise Duty based on the fuel type of the vehicle and its carbon dioxide (CO₂) emissions level, measured in grams per kilometre (g/km). Due to changes in vehicle emissions data, CO₂ figures may differ on these vehicles if taken from current ŠKODA UK stock. The VED bands are shown in the table opposite.

¹ First year vehicle licence rates for petrol and diesel cars purchased on or after 1st April 2014. First year rate or 'showroom tax' applies to new car purchases only.

² Rate reverts to the Government's applicable Standard VED rate in subsequent years.

Edition: UK 1st April 2014. VAT is calculated at 20%. Please confirm figures with your ŠKODA Retailer.

Company car tax is based on your cars carbon dioxide emissions. The higher the car's emissions, the higher its tax liability. When a company car is made available for private use a 'Benefit in Kind' value is calculated for tax purposes.

To help you work out your tax liability please refer to page 30.

P11D (Expenses and Benefits)

The P11D value is calculated by taking the On The Road (OTR) price for the vehicle, less the Road Fund Licence (RFL) and First Registration Fee (FRF).

BiK (Benefit in Kind)
The BiK percentage value is based on the CO₂ emissions of the vehicle for the current tax year 2014/2015.

For offers visit skoda.co.uk/offers

† Retailer supplied

Factory Fitted Optional Equipment

Option	S		GreenLine II		SE		Elegance	
	Basic	RRP	Basic	RRP	Basic	RRP	Basic	RRP
Bicycle holder in luggage compartment (Estate only)	£141.67	£170	-	-	£141.67	£170	£141.67	£170
Electric sunroof	-	-	-	-	£329.17	£395	£329.17	£395
Glovebox cover	£41.67	£50	std	std	std	std	std	std
Partial leather upholstery †††	-	-	-	-	£508.33	£610	£508.33	£610
Smoker's pack	£33.33	£40	£33.33	£40	£33.33	£40	£33.33	£40
Temporary spare steel wheel / 'Space saver' steel wheel ††	£62.50	£75	-	-	£62.50	£75	£62.50	£75
Textile floor mats	£41.67	£50	£41.67	£50	£41.67	£50	std	std
Third rear headrest	£58.33	£70	£58.33	£70	£58.33	£70	£58.33	£70
Variable boot floor (Estate only)	-	-	-	-	£120.83	£145	£120.83	£145

Steering wheels & Bluetooth®								
3 spoke leather steering wheel and small leather pack †	£216.67	£260	£216.67*	£260*	£216.67	£260	-	-
3 spoke MFSW for radio and small leather pack †	-	-	£250.00*	£300*	£250.00	£300	£116.67	£140
3 spoke MFSW for radio and telephone and small leather pack †*	-	-	£266.67*	£320*	£266.67	£320	£133.33	£160
Telephone preparation GSM II with Bluetooth®	-	-	£283.33*	£340*	£283.33	£340	£200.00	£240

Exterior								
Black protective side mouldings	£41.67	£50	£41.67	£50	£41.67	£50	£41.67	£50
Black (vRS) / White roof **	£312.50	£375	-	-	£312.50	£375	£312.50	£375
Black roof rails (Estate only)	£187.50	£225	std	std	std	std	std	std
Black / Silver roof rails (Estate only)	-	-	-	-	£208.33	£250	£208.33	£250
Metallic / Pearl effect paint / Sprint Yellow	£437.50	£525	£437.50	£525	£437.50	£525	£437.50	£525
Meteor Grey - Special colour	-	-	-	-	-	-	-	-
Sunset glass (from B-pillar back)	£229.17°	£275°	£229.17	£275	£150.00	£180	£150.00	£180
Silver roof (Hatch Only Pacific Blue, Black Magic, Denim Blue) ***	-	-	-	-	£312.50	£375	£312.50	£375

Alloys								
15" 'Rotare' alloys	£358.33	£430	-	-	std	std	-	-
16" 'Noid' alloys (6.5) x 16" 205/45 R16 83W)	-	-	-	-	£191.67	£230	FOC	FOC
16" 'Elba' alloys (6.5) x 16" 205/45 R16 83W)	-	-	-	-	£191.67	£230	FOC	FOC
17" 'Gigaro' Black alloys (7) x 17" 205/40 R17 7) x 17 ET41)	-	-	-	-	-	-	-	-
17" 'Gigaro' Dark Chrome alloys (7) x 17" 205/40 R17 7) x 17 ET41)	-	-	-	-	-	-	-	-
17" 'Gigaro' White alloys (7) x 17" 205/40 R17 7) x 17 ET41)	-	-	-	-	-	-	-	-
17" 'Scout' alloys (7) x 17" 205/40 R17 84W)	-	-	-	-	-	-	-	-

Note: MFSW - Multi-function Steering Wheel.

† 'Feinappa' leather on gear knob and handbrake, and leatherette on gearstick surround.

†† Dependant on trim and optional wheel fitted. Please consult your Retailer for details, please note that this replaces the standard tyre repair kit

††† Must be ordered in conjunction with a leather three spoke or MFSW.

° Available on Hatch only

* Not available on GreenLine II Estate.

** Available on Hatch only and selected colours see page 20 and 21 for details.

*** Currently available from stock only.

◆ Requires Bluetooth®

Monte Carlo		vRS		Scout	
Basic	RRP	Basic	RRP	Basic	RRP
£141.67	£170	£141.67	£170	£141.67	£170
£329.17	£395	£329.17	£395	£329.17	£395
std	std	std	std	std	std
-	-	-	-	£508.33	£610
£33.33	£40	£33.33	£40	£33.33	£40
£62.50	£75	std	std	£62.50	£75
£41.67	£50	£41.67	£50	std	std
£58.33	£70	£58.33	£70	£58.33	£70
-	-	£120.83	£145	£120.83	£145

-	-	-	-	std	std
£250.00	£300	-	-	£54.17	£65
£266.67	£320	£137.50°	£165°	£79.17	£95
£283.33	£340	£200.00	£240	£283.33	£340

-	-	-	-	-	-
-	-	£312.50	£375	-	-
std	std	-	-	-	-
-	-	-	-	std	std
£437.50	£525	£437.50	£525	£437.50	£525
£166.67	£200	£166.67	£200	-	-
std	std	std	std	std	std
-	-	-	-	-	-

-	-	-	-	-	-
-	-	-	-	-	-
-	-	-	-	-	-
-	-	£95.83	£115	-	-
-	-	£95.83	£115	-	-
-	-	£95.83	£115	-	-
-	-	-	-	£270.83	£325



Curtain airbags



Third rear headrest



Multi-function steering wheel for vRS

Factory Fitted Optional Equipment (continued)

Option	S		GreenLine II		SE		Elegance	
	Basic	RRP	Basic	RRP	Basic	RRP	Basic	RRP
Safety & Security								
Cornering front fog lights	-	-	-	-	£204.17	£245	£83.33	£100
Curtain Airbags	£208.33	£250	£208.33	£250	£208.33	£250	std	std
Curve projector halogen headlights including cornering front fog lights	-	-	-	-	-	-	£233.33	£280
Front fog lights	£141.67	£170	std	std	£141.67	£170	std	std
Hill Hold Control (non DSG engines only)	£37.50	£45	£37.50	£45	£37.50	£45	£37.50	£45
Comfort & Convenience								
Acoustic rear parking sensors	-	-	£237.50	£285	£237.50	£285	£237.50	£285
'Amundsen' satellite navigation system with DAB radio inc. maps for Western Europe	-	-	£520.83*	£625*	£520.83	£625	£520.83	£625
Climate control air conditioning	-	-	£233.33	£280	£233.33	£280	std	std
Cruise control	-	-	std	std	£145.83	£175	std	std
Daytime running lights	-	-	-	-	-	-	-	-
Front armrest	-	-	-	-	£75.00	£90	std	std
Glasses storage compartment	-	-	-	-	-	-	std	std
Heated front seats	£141.67	£170	£141.67*	£170*	£141.67	£170	£141.67	£170
Integrated headlight washers	£79.17	£95	-	-	£79.17	£95	£79.17	£95
Manual air conditioning	£466.67	£560	std	std	std	std	std	std
MDI (Multi Device Interface)	-	-	std	std	£145.83	£175	£145.83	£175
Maxi-dot trip computer	-	-	£133.33	£160	£133.33	£160	std	std
Rear electric windows	-	-	£133.33	£160	£133.33	£160	£133.33	£160
Sports suspension (Standard on Hatch optional on Estate)	£87.50	£105	-	-	£87.50	£105	£87.50	£105
Storage box under drivers seat	-	-	-	-	£33.33	£40	£33.33	£40
- under passenger seat	£33.33	£40	-	-	£33.33	£40	£33.33	£40
- front seats	£50.00	£60	-	-	£50.00	£60	£50.00	£60
Towing								
Towbar, removeable and lockable**	£333.33	£400	-	-	£333.33	£400	£333.33	£400
Towbar, preparation**	£125.00	£150	-	-	£125.00	£150	£125.00	£150
Service and Warranty								
Extended warranty (4 years / 80,000 miles)†	£141.67	£170	£141.67	£170	£141.67	£170	£141.67	£170
Extended warranty (5 years / 100,000 miles)†	£254.17	£305	£254.17	£305	£254.17	£305	£254.17	£305
Service plan (Total 3 years or 30,000 miles)†	£399.17	£479	£399.17	£479	£399.17	£479	£399.17	£479

* Not available on GreenLine II Estate.

** The factory tow bar provides a complete single electrics solution via a 13 pin socket. No further accessories are required, but a 13 pin to 7 pin adapter is available if required - please contact your retailer for more details.

† For terms and conditions please see page 31.

Monte Carlo		vRS		Scout	
Basic	RRP	Basic	RRP	Basic	RRP
-	-	-	-	-	-
£208.33	£250	std	std	£208.33	£250
-	-	-	-	-	-
std	std	-	-	std	std
£37.50	£45	£37.50	£45	£37.50	£45

£237.50	£285	£237.50	£285	£237.50	£285
£520.83	£625	£520.83	£625	£520.83	£625
£233.33	£280	£233.33	£280	£233.33	£280
£145.83	£175	£145.83	£175	std	std
-	-	std	std	£83.33	£100
£75.00	£90	£75.00	£90	std	std
-	-	£20.83	£25	£20.83	£25
£141.67	£170	£141.67	£170	£141.67	£170
£79.17	£95	£79.17	£95	£79.17	£95
std	std	std	std	std	std
std	std	std	std	£145.83	£175
£133.33	£160	-	-	£133.33	£160
£133.33	£160	£133.33	£160	std	std
std	std	std	std	-	-
£33.33	£40	£33.33	£40	£33.33	£40
£33.33	£40	£33.33	£40	£33.33	£40
£50.00	£60	£50.00	£60	£50.00	£60

-	-	-	-	£333.33	£400
-	-	-	-	£125.00	£150

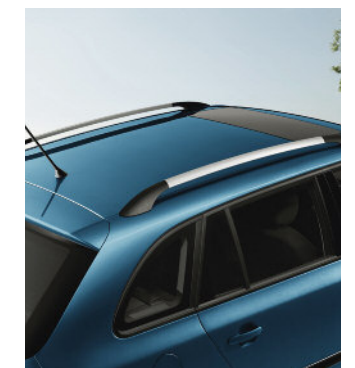
£141.67	£170	£141.67	£170	£141.67	£170
£254.17	£305	£254.17	£305	£254.17	£305
£399.17	£479	£399.17	£479	£399.17	£479



Satellite Navigation 'Amundsen'



Multi Device Interface



Silver roof rails



Cruise control

The ŠKODA Fabia colours



1. Candy White



2. Corrida Red



3. Pacific Blue



4. Sprint Yellow



5. Meteor Grey



6. Denim Blue metallic



7. Moon white metallic



8. Black Magic pearl effect



9. Cappuccino metallic



10. Petrol Blue metallic†



11. Brilliant Silver metallic



12. Steel Grey metallic†



13. Rio Red metallic



14. Metal Grey metallic



15. Race Blue metallic



16. Rallye Green metallic

† Stock vehicles only please consult your retailer.

Because of errors which may occur in the print, the colours illustrated here may differ from the actual finishes themselves. Your ŠKODA retailer will be pleased to advise you.

The ŠKODA Fabia colours

	1	2	3	4	5	6	7	8	9
	Candy White	Corrida Red	Pacific Blue	Sprint Yellow	Meteor Grey	Denim Blue metallic	Moon white metallic	Black Magic pearl effect	Cappuccino metallic
Fabia	•	•	•(S)	•(W)	-	•(W,S)	•	•(W,S)	•
Fabia Scout	•	•	•	-	-	•	•	•	•
Fabia Monte Carlo	•(B)	•(B)	-	•(B)	•(B)	-	•(B)	•(B)	-
Fabia vRS	•(B)	•(W,B)	-	•(B)	•(B)	-	•(B)	•(W)	-

	10	11	12	13	14	15	16
	Petrol Blue † metallic	Brilliant Silver metallic	Steel Grey † metallic	Rio Red metallic	Metal Grey metallic	Race Blue metallic	Rallye Green metallic
Fabia	•	•	•	•(W)	•(W)	-	-
Fabia Scout	•	•	•	•	•	-	-
Fabia Monte Carlo	-	•(B)	-	-	-	•(Estate only)	-
Fabia vRS	-	•(B)	-	•(W,B)	•(W,B)	•(W,B)	•(W,B)

(W) White Roof available Hatch only (S,SE, Elegance, vRS).

(B) Black roof available (vRS and Monte Carlo Hatch only)

(S) Silver roof available Hatch only (SE,Elegance).

† Stock vehicles only please consult your retailer.

The ŠKODA Fabia colour roof options



You can now select a black, white or silver roof for your Fabia, adding a brand new level of personalisation to your car. Coloured roofs are available on S, SE, Elegance, Monte Carlo and vRS. See page 16 for prices. please consult your retailer for availability.

Please note: The following colour combinations are not available: Black roof with Petrol Blue metallic, Storm Blue metallic or Pacific Blue body. Silver roof with Candy White body. White roof with Brilliant Silver metallic body.

Coloured roofs for S, SE, Elegance Trims available on stock vehicles only.

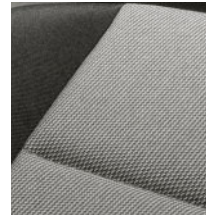
The ŠKODA Fabia trims & wheels

Fabia S

Standard



Stone Blue & Onyx dash or Stone Blue & Silver dash



Stone Grey & Onyx dash or Stone Grey & Silver dash



15" 'Satellite' Steel wheel covers

Option



15" 'Rotare' alloys

Fabia GreenLine II

Standard



Domino Grey & Onyx dash or Domino Grey & Silver dash



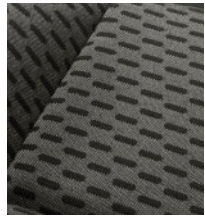
Domino Black & Onyx dash or Domino Black & Silver dash



15" 'Rotare' alloys

Fabia SE

Standard



Domino Grey & Onyx dash or Domino Grey & Silver dash



Domino Black & Onyx dash or Domino Black & Silver dash



15" 'Rotare' alloys

Option



16" 'Noid' alloys



16" 'Elba' alloys



Partial Leather upholstery with Onyx dash or Silver dash

Fabia Elegance

Standard



Chess Black Onyx dash



Chess Beige Onyx/Ivory dash



16" 'Comet' alloys

Option



Partial Leather upholstery & Onyx dash



16" 'Elba' alloys



16" 'Noid' alloys

The ŠKODA Fabia trims & wheels

Fabia Scout

Standard

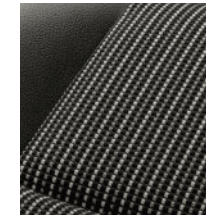


Scout Onyx cloth & Onyx dash or Silver dash



16" 'Scout' alloys

Option



Partial Leather upholstery & Onyx dash or Silver dash



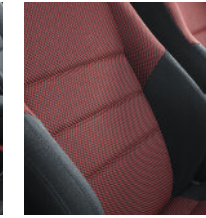
17" 'Scout' alloys

Fabia Monte Carlo

Standard



Onyx Black



Onyx Red



17" Black Trinity alloys

Fabia vRS

Standard



Tempo Grey vRS upholstery



Tempo Red vRS upholstery



17" 'Gigaro' alloys



17" Gigaro Dark Chrome alloys



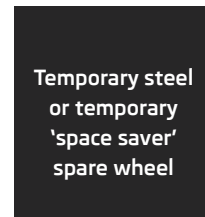
17" Gigaro Black alloys



17" Gigaro White alloys

Option

Available on all models (except GreenLine II)



Temporary steel or temporary 'space saver' spare wheel

See page 16 for details

Pictures are for illustrative purposes only. Please visit your local retailer for further information.

The ŠKODA Fabia Engine Specifications

Petrol Engines	1.2 12V 60PS	1.2 12V 69PS	1.2 TSI 86PS	1.2 TSI 105PS	1.2 TSI 105PS DSG	1.4 TSI 180PS DSG
Type	3-cylinder in-line engine	3-cylinder in-line	4-cylinder in-line engine	4-cylinder in-line engine	4-cylinder in-line engine	4-cylinder in-line engine
Fuel injection system	Multi point fuel injection	Multi point fuel injection	Electronically Controlled Direct Injection	Electronically Controlled Direct Injection	Electronically Controlled Direct Injection	Electronically Controlled Direct Injection
Cubic capacity cc	1,198	1,198	1,197	1,197	1,197	1,390
Bore x stroke mm	76.5 x 86.9	76.5 x 86.9	71.0 x 75.6	71.0 x 75.6	71.0 x 75.6	76.5 x 75.6
Air pollution regulation	EU 5	EU 5	EU 5	EU 5	EU 5	EU 5
Compression ratio	10.5:1	10.5:1	10.0:1	10.0:1	10.0:1	10.0:1
Hatchback						
Trim level	S	SE	SE / Monte Carlo	Elegance / Monte Carlo	S / SE / Elegance	vRS
Performance						
Max speed mph (km/h)	96 (155)□	101 (163)□	110 (177)□	119 (191)□	117 (189)□	139 (224)□
Acceleration 0–62mph	16.5	14.9	11.7	10.1	10.2	7.3
Max. performance (PS/rpm)	60 / 5,200	69 / 5,400	86 / 4,800	105 / 5,000	105 / 5,000	180 / 6,200
Max. torque (Nm/rpm)	108 / 3,000	112 / 3,000	160 / 1,500 - 3,500	175 / 1,500 - 4,100	175 / 1,500 - 4,100	250 / 2,000 - 4,500
Fuel consumption mpg (l/100km)						
Urban*	38.7 (7.3)	38.7 (7.3)	42.8 (6.6)	41.5 (6.8)	40.4 (7.0)	36.7 (7.7)
Extra Urban*	62.8 (4.5)	62.8 (4.5)	64.2 (4.4)	62.8 (4.5)	64.2 (4.4)	54.3 (5.2)
Combined*	51.4 (5.5)	51.4 (5.5)	54.3 (5.2)	53.3 (5.3)	53.3 (5.3)	45.6 (6.2)
CO ₂ emissions g/km*	128	128	121	124	124	148
Estate						
Trim level		S	SE / Scout / Monte Carlo	SE / Elegance / Monte Carlo	SE Elegance	vRS
Performance						
Max speed mph (km/h)	n/a	102 (164)□	111 (178)□	120 (193)□	118 (190)□	140 (226)□
Acceleration 0–62mph	n/a	15.0	11.8	10.2	10.3	7.3
Max. performance (PS/rpm)	n/a	69 / 5,400	86 / 4,800	105 / 5,000	105 / 5,000	180 / 6,200
Max. torque (Nm/rpm)	n/a	112 / 3,000	160 / 1,500 - 3,500	175 / 1,500 - 4,100	175 / 1,500 - 4,100	250 / 2,000 - 4,500
Fuel consumption mpg (l/100km)						
Urban*	n/a	38.7 (7.3)	42.8 (6.6)	41.5 (6.8)	40.4 (7.0)	36.7 (7.7)
Extra Urban*	n/a	62.8 (4.5)	64.2 (4.4)	62.8 (4.5)	64.2 (4.4)	54.3 (5.2)
Combined*	n/a	51.4 (5.5)	54.3 (5.2)	53.3 (5.3)	53.3 (5.3)	45.6 (6.2)
CO ₂ emissions g/km*	n/a	128	121	124	124	148

□ Where law permits.

Power transmission

Clutch The clutch assembly comprises of a single dry clutch disc with membrane spring, asbestos free.

Manual transmission Five-speed manual transmission, fully synchronised with direct gearshift.

Automatic transmission 7 speed DSG Two coaxial dry multiple disc clutch, electro - hydraulically operated.

Chassis

Front axle/rear axle McPherson suspension with lower triangular links and torsion stabiliser.

Suspension Coil springs, telescopic shock absorbers, rear springs located outside the shock absorber.

Braking system Hydraulic dual-diagonal circuit braking system vacuum assisted.

Front brakes Ventilated disc brakes in sliding calliper design with piston.

Rear brakes Drum brakes with two self-adjusting brake shoes.

vRS and GreenLine II (Hatch) Disc brakes front and rear.

Handbrake Mechanical handbrake operating on rear wheels.

Steering Direct rack and pinion steering with electro hydraulic power.

Turning circle (m) 10

The ŠKODA Fabia Engine Specifications

Diesel Engines	1.2 TDI CR 75PS DPF	1.6 TDI CR 75PS DPF	1.6 TDI CR 90PS DPF	1.6 TDI CR 105PS DPF
Type	3-cylinder in-line engine	4-cylinder in-line engine	4-cylinder in-line engine	4-cylinder in-line engine
Fuel injection system	Electronically Controlled Direct Injection	Electronically Controlled Direct Injection	Electronically Controlled Direct Injection	Electronically Controlled Direct Injection
Cubic capacity cc	1,199	1,598	1,598	1,598
Bore x stroke mm	79.5 x 80.5	79.5 x 80.5	79.5 x 80.5	79.5 x 80.5
Air pollution regulation	EU 5	EU 5	EU 5	EU 5
Compression ratio	16.5:1	16.5:1	16.5:1	16.5:1
Hatchback				
Trim level	GreenLine II	S / SE	Elegance	SE / Elegance / Monte Carlo
Performance				
Max speed mph (km/h)	107 (172)□	103 (166)□	109 (176)□	117 (188)□
Acceleration 0–62mph	14.2	14.1	12.6	10.9
Max. performance (PS/rpm)	75 / 4,200	75 / 4,000	90 / 4,200	105 / 4,400
Max. torque (Nm/rpm)	180 / 2,000	195 / 1,500 - 2,000	230 / 1,500 - 2,500	250 / 1,500 - 2,500
Fuel consumption mpg (l/100km)				
Urban*	68.9 (4.1)	55.4 (5.1)	55.4 (5.1)	55.4 (5.1)
Extra Urban*	94.2 (3.0)	78.5 (3.6)	78.5 (3.6)	78.5 (3.6)
Combined*	83.1 (3.4)	67.3 (4.2)	67.3 (4.2)	67.3 (4.2)
CO ₂ emissions g/km*	88	109	109	109
Estate				
Trim level	GreenLine II	S	SE	SE / Elegance / Scout / Monte Carlo
Performance				
Max speed mph (km/h)	107 (172)□	104 (167)□	110 (177)□	118 (190)□
Acceleration 0–62mph	14.3	14.2	12.7	11.0
Max. performance (PS/rpm)	75 / 4,200	75 / 4,000	90 / 4,200	105 / 4,400
Max. torque (Nm/rpm)	180 / 2,000	195 / 1,500 - 2,000	230 / 1,500 - 2,500	250 / 1,500 - 2,500
Fuel consumption mpg (l/100km)				
Urban*	68.9 (4.1)	55.4 (5.1)	55.4 (5.1)	55.4 (5.1)
Extra Urban*	94.2 (3.0)	78.5 (3.6)	78.5 (3.6)	78.5 (3.6)
Combined*	83.1 (3.4)	67.3 (4.2)	67.3 (4.2)	67.3 (4.2)
CO ₂ emissions g/km*	88	109	109	109

□ Where law permits.

Tank

Fuel tank content 45 litres

Fuel Unleaded petrol RON 95 or unleaded petrol RON 91^{1/2} Diesel.

Body type Five-door, five-seat, double-space steel bodywork, fully zinc-coated.

Drag co-efficient (Hatch)

Standard 0.32
GreenLine II 0.30
vRS 0.34

Drag co-efficient (Estate)

Standard 0.31
GreenLine II 0.30
vRS 0.33

Official fuel consumption for the Fabia range in mpg (litres/100km):

urban 36.7 (7.7) - 68.9 (4.1);
extra urban 54.3 (5.2) - 94.2 (3.0);
combined 45.6 (6.2) - 83.1 (3.4).

CO₂ Range 148 - 88 g/km

¹Using low-octane fuel may affect engine performance.

We measure the maximum power output figures of our engines in PS or Pferdestärke (horse strength in German), which is the metric equivalent of bhp. To convert from metric to imperial horsepower, divide the PS figure by 1.0139.

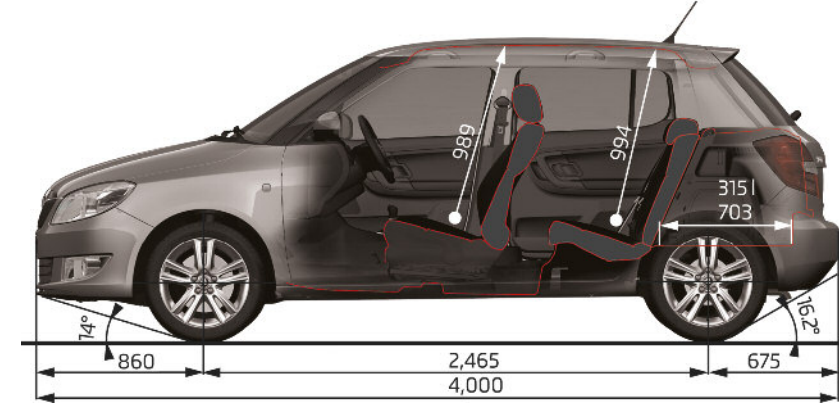
*Standard EU Test figures are for comparative purposes and may not reflect real driving results. Fuel consumption and CO₂ figures are obtained under standardised EU test conditions (Directive 93/116/EEC). This allows a direct comparison between different manufacturer models but may not represent the actual fuel consumption achieved in 'real world' driving conditions. More information is available on the ŠKODA website at skoda.co.uk and at vca.gov.org.

Measurements and Weights

The ŠKODA Fabia Hatchback

Exterior dimensions (mm)	Standard	vRS	Monte Carlo
Length (mm)	4,000	4,029	4,013
Width (mm)	1,642	1,642	1,651
Height (mm)	1,498	1,492	1,493
Wheelbase (mm)	2,465	2,464	2,464
Track front (mm)	1,433	1,423	1,423
Track rear (mm)	1,426	1,415	1,415
Clearance (mm)	134	129	129

Interior dimensions (mm)			
Headroom front/rear (mm)		989/994	
Front legroom (mm) (max/min)		1,075/858	
Rear legroom (mm) (max/min)		864/621	
Width of front/rear seats (mm)		1,380/1,384	
Boot capacity (litres)		300	
Boot capacity with rear seats folded (litres)		1,163	
Boot capacity without spare wheel (litres)	315	n/a	315
Boot capacity with rear seats folded and no spare wheel (litres)	1,180	n/a	1,180



Petrol	1.2 12V 60PS	1.2 12V 69PS	1.2 TSI 86PS	1.2 TSI 105PS	1.2 TSI 105PS DSG	1.4 TSI 180PS DSG
Weight						
Kerb weight* kg	1,020	1,020	1,041	1,055	1,089	1,243
Total weight kg	1,550	1,550	1,571	1,585	1,619	1,718
Payload** kg	530	530	530	530	530	475
Max roof load kg	75	75	75	75	75	75
Towing unbraked max kg	500	500	500	500	500	n/a
Towing braked max kg	800	800	1,100	1,200	1,200	n/a
Nose weight max kg	50	50	50	50	50	n/a

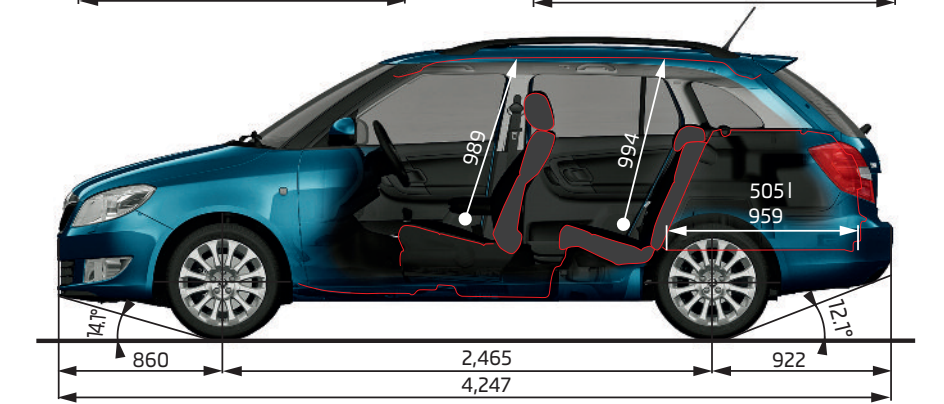
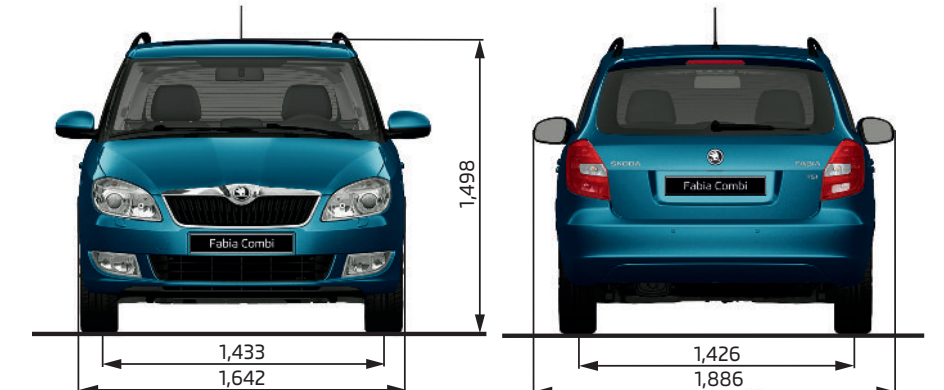
Diesel	1.2 TDI CR 75PS DPF	1.6 TDI CR 75PS DPF	1.6 TDI CR 90PS DPF	1.6 TDI CR 105PS DPF
Weight				
Kerb weight* kg	1,128	1,129	1,129	1,144
Total weight kg	1,658	1,659	1,659	1,674
Payload** kg	530	530	530	530
Max roof load kg	75	75	75	75
Towing unbraked max kg	500	500	500	500
Towing braked max kg	1,000	1,000	1,200	1,200
Nose weight max kg	50	50	50	50

All measurements and weights are correct at time of going to print but may be subject to change and may vary according to passengers and load in vehicle.

The ŠKODA Fabia Estate

Exterior dimensions (mm)	Standard	vRS
Length (mm)	4,247	4,276
Width (mm)	1,642	1,642
Height (mm)	1,498	1,494
Wheelbase (mm)	2,465	2,464
Track front (mm)	1,433	1,423
Track rear (mm)	1,426	1,415
Clearance (mm)	135	129

Interior dimensions (mm)		
Headroom front/rear (mm)		989/994
Front legroom (mm) (max/min)		1,075/858
Rear legroom (mm) (max/min)		864/621
Width of front/rear seats (mm)		1,380/1,383
Boot capacity (litres)		480
Boot capacity with rear seats folded (litres)		1,460
Boot capacity without spare wheel (litres)	505	505
Boot capacity with rear seats folded and no spare wheel (litres)	1,485	1,485



Petrol	1.2 12V 69PS	1.2 TSI 86PS	1.2 TSI 105PS	1.2 TSI 105PS DSG	1.4 TSI 180PS DSG
Weight					
Kerb weight* kg	1,040	1,061	1,075	1,109	1,238
Total weight kg	1,570	1,591	1,605	1,639	1,713
Payload** kg	530	530	530	530	475
Max roof load kg	75	75	75	75	75
Towing unbraked max kg	450	450	450	450	n/a
Towing braked max kg	800	1,100	1,200	1,200	n/a
Nose weight max kg	50	50	50	50	n/a

Diesel	1.2 TDI CR 75PS DPF	1.6 TDI CR 75PS DPF	1.6 TDI CR 90PS DPF	1.6 TDI CR 105PS DPF
Weight				
Kerb weight* kg	1,144	1,149	1,149	1,164
Total weight kg	1,674	1,679	1,679	1,694
Payload** kg	530	530	530	530
Max roof load kg	75	75	75	75
Towing unbraked max kg	450	450	450	450
Towing braked max kg	1,000	1,000	1,200	1,200
Nose weight max kg	50	50	50	50

* Kerb weight is the mass of the vehicle with body work in running order (kg) ** Payload includes driver at 75kg & equipment.




ŠKODA Solutions. Your journey, your choice.

ŠKODA Finance like to do things a little differently, that's why for many years we've specialised in providing simple and convenient funding options for ŠKODA drivers. It's what we know.

ŠKODA Solutions, the personal contract plan, is all about you; a flexible, competitive fixed-rate plan designed around you and your budget, putting you firmly in the Fabia driving seat.

Solutions is different because you defer a proportion of the car's value until the end of the agreement, giving you significantly lower monthly repayments than if you'd taken out a loan...ever heard of a bank being so imaginative?

Solutions is totally flexible. You get to choose the size of your deposit (from as little as one monthly payment), and a repayment period which suits you and at the end of the term you have 3 options to choose from.

- 1  Part-exchange the car for a new ŠKODA on a new Solutions contract.
- 2  Pay the optional final payment so that you own the car.*
- 3  Circumstances changed? Return the car to us (subject to terms and conditions).



 **DEPOSIT**

As little as one repayment

 **BALANCE**

A flexible repayment period
(18-42 months)

   **OPTIONAL FINAL PAYMENT**

3 choices at the end of the agreement

ŠKODA Finance also offers hire purchase, contract hire and service and maintenance plans.

Speak to your ŠKODA retailer for your personalised quotation today

Free Insurance for 3 years.

No-one likes to think about their ŠKODA being damaged in an accident. But if it was you'd no doubt want it repaired to ŠKODA standards, by a ŠKODA trained technician using only ŠKODA genuine parts. Would your motor insurance provider guarantee to do that? We didn't think so...

That's why we came up with Ensurance - ŠKODA's free accident and repair cover.

Ensurance works alongside your existing comprehensive motor insurance policy, no matter who you are insured with, to help get you back on the road as smoothly as possible. Better still, it's free for three years and is available on both new and older models.

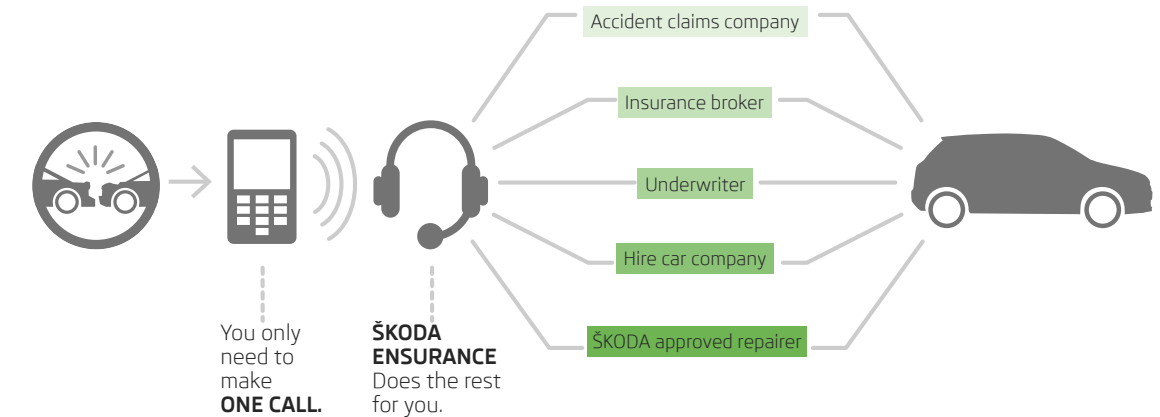
Your free Insurance cover includes:

- > Guaranteed use of a ŠKODA approved repairer, ŠKODA trained technicians and the use of genuine ŠKODA parts and paints
- > A dedicated Claims Manager who will look after your entire claim from start to finish
- > Help to recover any uninsured losses with our Legal Expenses Cover
- > An Online claims tracker so you can keep up to date with the status of any claim

To benefit from Ensurance you'll need to activate your free cover which takes less than a minute.

We hope you don't ever have to use your policy but it's nice to know it's there - just in case.

You only need to make one call,
Ensurance deals with the rest...



Your car is **guaranteed** to be repaired by a ŠKODA Insurance approved repairer. Only **genuine** ŠKODA parts **will be used**.

For more information and to take out cover today visit skoda-ensurance.co.uk

*Subject to payment of the option to purchase fee. An offer of finance depends on certain conditions. Subject to status, indemnities may be required. Available to over 18's in the UK only. ŠKODA Finance. ŠKODA Finance is a trading name of Volkswagen Financial Services (UK) Limited, Brunswick Court, Yeomans Drive, Blakelands, Milton Keynes MK14 5LR. Registered in England number 2835230.

Technical glossary

ABS: the anti-lock braking system prevents the wheels from locking during heavy or emergency braking, enabling the vehicle to remain steerable. When braking, wheel speed sensors measure the road wheel speed and should one or more wheels start to lock the system reduces brake pressure to that wheel.

Elements of the ABS System :-

• **EBC**: Electronic brake control. The engine brake torque control regulates the power supply by intervening with the engine management system.

CAN Bus: the CAN Bus is an electronic data bus which links the various different electronic control systems in the car. It ensures ideal co-ordination between systems and reduces the amount of wiring needed in the car.

Fuel cut-out: should one or more of the airbags inflate after an accident, this system automatically cuts out the fuel supply, thus preventing subsequent leakage of the diesel or petrol.

Trip Computer: the trip computer not only features an impressive range of data displays, operating it is simplicity itself. A multifunction touch key enables you to call up all relevant data on the easy-to-read display. Features include external temperature, time, current fuel consumption, average fuel consumption, miles driven and average speed.

DPF: diesel particulate filter is part of the exhaust system responsible for cleaning the engine exhaust gases before they enter the atmosphere. The DPF catches soot particles emitted in the exhaust gas and it works in conjunction with the catalytic converter, which reduces the amount of harmful gases entering the atmosphere. The DPF must periodically be emptied of the soot particles, a process known as regeneration. This involves elevated exhaust system temperatures. A driving style is required during regeneration, where a constant vehicle speed above 37 mph must be maintained. This does not always suit customers who make frequent short journeys or experience stop/start driving or drive within inner-city or urban areas.

CR: the completely new range of diesel engines are built on a system of Common-Rail fuel injection. The diesel engines have a high-pressure common rail direct injection fuel system and four-valve technology. As a result, the new engines are much quieter, more refined in their operation and consume less fuel, compared to the Pump Duse engines and significantly reduce emissions.

ESC: electronic stability control is designed to stabilise the dynamic handling response of the vehicle by counteracting any tendency towards oversteer or understeer. The ESC constantly compares the actual movement of the vehicle with predetermined values and according to the situation ESC reacts by braking each wheel individually (according to direction of slip) and automatically adjusting the engine’s output.

Elements of ESC system:-

• **ASR**: anti-slip regulation traction control ensures the Fabia’s stability when pulling away or accelerating. If the engine power or torque being transmitted to the drive wheels is too great, for example on a slippery road surface, engine torque is automatically reduced until optimum road holding returns, thus preventing wheelspin. A light indicates whether the ASR system is on. It can be manually switched off.

• **EDL**: the electronic differential lock continually compares the rpm of the drive wheels, and if it identifies a difference between them which could lead to an individual wheel spinning, for example if the two wheels are on different types of surface or accelerating on wet leaves, the system brakes the wheel affected until uniform rpm of all drive wheels is restored.

• **HBA**: Hydraulic brake assistant increases the optimal build-up of brake power. It ensures complete use of the brake system potential, thus shortening the braking distance.

HHC: Hill hold control allows for a safe hill start by holding the brake for a small amount of time, reducing the risk of unintentional reversing or roll back.

TPM: Draws the drivers attention to any pressure loss in any of the tyres. Early warning can prevent damage from occurring as a result of an under inflated tyre or a defect that radically changes the cars behaviour and driveability.

Customer services

Talk to us on 08457 745 745

No matter what the query, our dedicated call centre is always ready to listen. No matter how big or small the request, speak to one of our customer care advisors to see if they can help. The call centre is open from 8.30am-5.30pm. If you’re calling out of hours, then a message can be left and you’ll be contacted back.

Peace of mind with a ŠKODA warranty

In the first two years of owning your car, you’ll get the peace of mind of a two year unlimited mileage warranty. In addition, you’ll also get a further warranty on new vehicles supplied through the appointed dealer network until the vehicle has completed 60,000 miles or the end of the third year, whichever is sooner.

Your Fabia also benefits from a 3 year paint warranty and 12 year body protection warranty.

A network that’s here to help

With 17 years in the top 10 of JD Power’s customer satisfaction survey, our network of approximately 160 authorised repairers know how to treat a customer. You can be sure that as a ŠKODA customer, your retailer will look after you from the moment you walk through the door, throughout the life of your ŠKODA. Your Fabia will be serviced and maintained to the highest standards by specially trained ŠKODA technicians. And when you need a spare part you’ll be happy to know that most are held in stock, or can be ordered within 24 hours. So if top class customer satisfaction is what you’re after, the ŠKODA network will be there for you.

Motability

People in receipt of the Higher Mobility Component of the Disability Living Allowance receive special help from ŠKODA. Preferential prices on low cost Contract Hire are available through your local approved Motability retailer. For full details, contact your retailer.

If your ŠKODA’s in trouble, rely on ŠKODA Assistance

Completely free of charge, every new ŠKODA is covered by ŠKODA Assistance. This cover lasts for 3 years, with no mileage limit. So if you ever break down, you can use the freephone number to call out someone who really knows about ŠKODA cars to help. This service is even available in Europe, so you don’t need additional breakdown cover when you’re driving on the continent.

Financing your ŠKODA

We all know that times are hard, so ŠKODA Finance specialises in providing funding solutions for ŠKODA drivers. Regardless of whether you’re a private or business user, you can choose from a range of funding options.

Finance products available are:

- Solutions – a personal contract plan
- Hire purchase
- Lease purchase
- Finance lease
- Contract hire

With all ŠKODA Finance products you can choose a fixed-cost maintenance plan designed to help you budget accurately. No matter what finance product you choose, your local ŠKODA retailer will be able to provide you with a personalised quote that could meet your budget and vehicle needs. ŠKODA Finance is a trading name of Volkswagen Financial Services (UK) Limited, Brunswick Court, Yeomans Drive, Blakelands, Milton Keynes MK14 5LR. Registered in England number 2835230.

Adding that little extra to your car

If the standard specification and factory fitted options aren’t enough for you, then why not take a look at our range of retailer fitted accessories? A separate accessories brochure can be found at your local retailer, or can be ordered by phoning our call centre, or by going on-line at skoda.co.uk

Extended warranty

Exclusions and limitations

Wear and tear components will only be considered under the terms of the warranty for the first of six months or 6,500 miles, whichever is soonest. These include, but are not limited to brake linings and disc pads, clutch release bearings, clutch pressure plates and centre plates, tyres, wiper blades, seat and backrest covers, floor coverings, spark plugs, batteries for key fobs and alarms, light bulbs and shock absorbers.

Mechanical adjustments including but not limited to adjustments to doors, flaps, boot lids, bonnets and sunroof, brake adjustment, clutch adjustment, v belt adjustment, ignition adjustment, headlight adjustment, steering geometry adjustments and wheel balancing are excluded.

Damage (including but not limited to the following) is excluded:

- Damage caused by your failure to take all reasonable steps to prevent mechanical damage from occurring.
- Damage or defects caused by not having the vehicle serviced in accordance with the manufacturer’s guidelines.
- Damage or defects caused by improper use of the vehicle, neglect or use of the vehicle for motor sports activities.
- Damage caused by an accident.

- Damage to paintwork or chrome caused by external influences, such as climatic, chemical or industrial pollution.
- Damage resulting from the use of non-original replacement parts.

Damage caused by fire, theft or vandalism is covered under the terms of the warranty.

Routine maintenance and servicing is not covered by the warranty. Incidental or consequential costs such as hotel charges, car hire, loss of personal effects or income are not recoverable under the terms of the warranty.

ŠKODA Insurance is a trading name of Volkswagen Insurance Service (Great Britain) Limited, an appointed representative of Volkswagen Financial Services (UK) Limited, registered in England number: 2835230 (registered office: Brunswick Court, Yeomans Drive, Blakelands, Milton Keynes MK14 5LR). ŠKODA Insurance motor insurance is sold, underwritten and administered by Allianz Insurance plc, registered in England number: 84638 (registered office: 57 Ladymead, Guildford, Surrey GU1 1DB). Both organisations are authorised and regulated by the Financial Conduct Authority (FCA), whose registration numbers are 311988 and 121849 respectively. Authorisation details can be checked on the FCA’ s register at www.fca.org.uk or by contacting the FCA on 0800 111 6768. Volkswagen Financial Services (UK) Limited and Allianz Insurance plc are not part of the same corporate group.



The information in this brochure referring to specification, design, equipment, material and external appearance relates to the time at which this brochure was printed. Whilst every effort is made to ensure its accuracy, the information in this brochure is not binding and is subject to alteration. Some illustrations in this brochure depict left hand drive models, with both standard and optional equipment shown. Please confirm exact specifications, prices and colour availability with your SKODA retailer who will be notified of any specification changes as they occur.

Edition: UK 05/14

Information: 08457 745 745

Internet: skoda.co.uk

E-mail: customerservices@skoda.co.uk

Welcome to your SKODA retailer