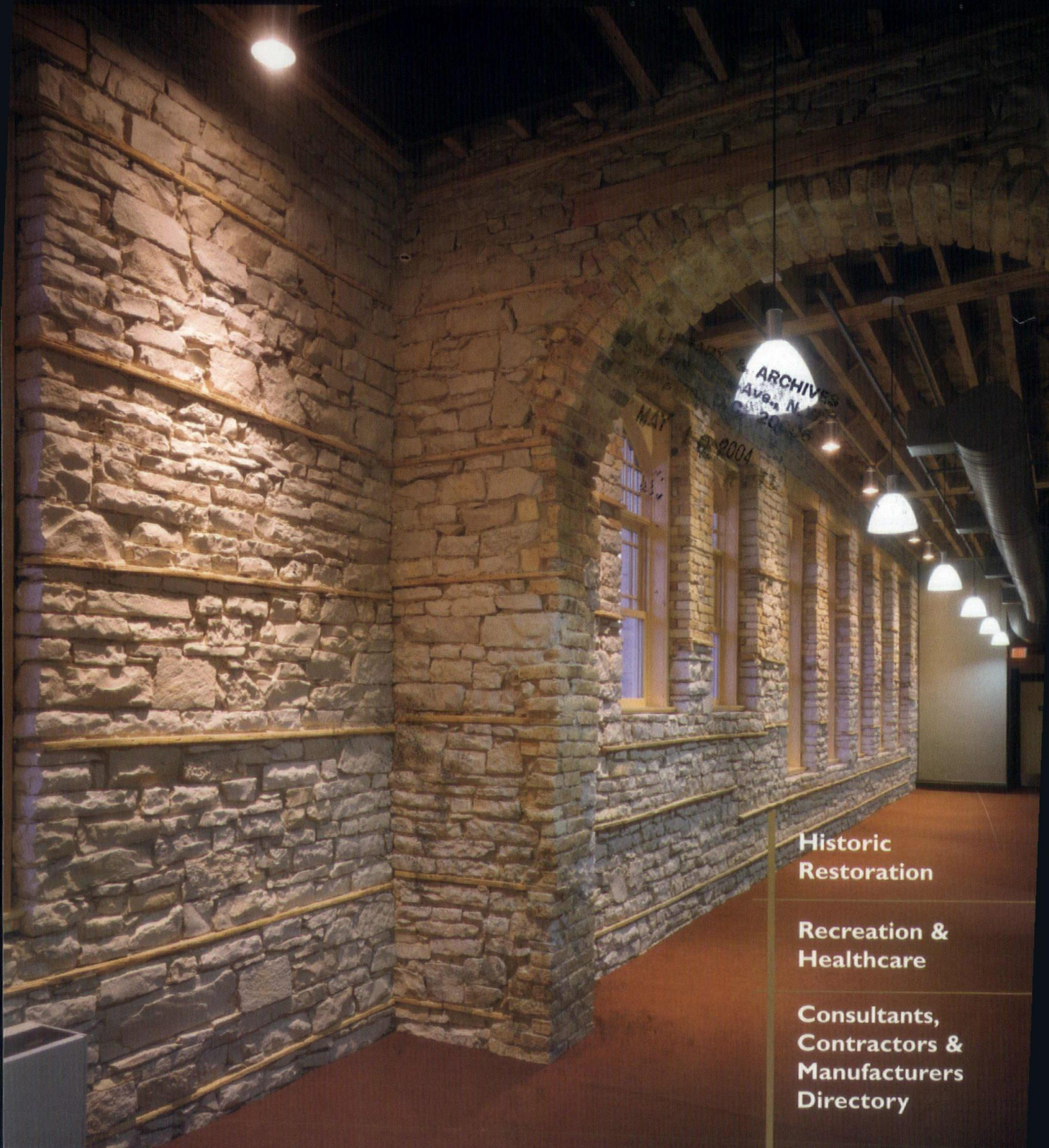


# Wisconsin ARCHITECT



**Historic  
Restoration**

**Recreation &  
Healthcare**

**Consultants,  
Contractors &  
Manufacturers  
Directory**



# CLASS PROJECT

For over 50 years, Spancrete has helped communities build brighter futures for their students. With hundreds of school-related projects completed and more on the way, Spancrete insulated wall panels and other precast components are a cost-effective solution for school construction - a solution that provides a fire proof, secure, attractive learning environment.

"I am so pleased with the quality of the Spancrete product: the even color, patterns and beauty. You can do almost anything with the design when using Spancrete."

DR. DAVID LODES,  
SUPERINTENDENT  
ARROWHEAD UNION  
HIGH SCHOOL DISTRICT

"Striving to be the most responsive partner and innovative provider of precast solutions"

## SPANCRETE INDUSTRIES, INC.

www.spancrete.com • Waukesha, Wisconsin 414-290-9000  
Chicago, Illinois 773-775-6402 • Green Bay, Wisconsin 920-494-0274



ARROWHEAD HIGH SCHOOL  
HARTLAND, WI

**SPANCRETE**  
Quality • Service • Durability



# WISCONSIN ARCHITECT

## Volume 74, Issue 4

### Wisconsin Architect, Inc.

#### Board of Directors:

Thomas R. Cox, AIA  
 Michael P. Eberle, AIA  
 Cherie K. Claussen, AIA  
 Gary A. Gust, AIA

#### Editorial Advisory Board

Mark J. Kruser, AIA, *Chair*  
 Michael E. Bahr, AIA  
 David Black, AIA  
 Melissa Destree, AIA  
 Amy Doyle, Assoc. AIA  
 Michael P. Eberle, AIA  
 A. James Gersich, AIA  
 Robert C. Greenstreet, Assoc. AIA  
 John G. Horky, AIA  
 T.J. Morley, AIA  
 Jeffery R. Musson, AIA  
 Daniel J. Roarty, AIA  
 Peter J. Schuyler, AIA  
 Robert E. Shipley, AIA  
 Robert S. Wheat, AIA  
 William M. Babcock, Hon. AIA

#### Managing Editor

Brenda K. Taylor

#### Publisher

William M. Babcock, Hon. AIA

#### Advertising & Editorial Office

321 S. Hamilton St.  
 Madison, WI 53703-4000  
 (608) 257-8477  
 email: [wiaarchitect@aiaaw.org](mailto:wiaarchitect@aiaaw.org)

#### Online Media Kit:

[www.aiaaw.org/magazine.htm](http://www.aiaaw.org/magazine.htm)

#### Subscriptions

Wisconsin Architect is mailed at no charge to all members of AIA Wisconsin and allied professionals. Complimentary subscriptions are available for Wisconsin design and construction individuals upon written request to Wisconsin Architect, 321 S. Hamilton St., Madison, WI 53703. Subscriptions for all others are \$70/ year or \$120/ 2 years. U.S. only. For more information call (608) 257-8477 or email inquiries to [wiaarchitect@aiaaw.org](mailto:wiaarchitect@aiaaw.org).

*Wisconsin Architect and AIA Wisconsin disclaim liability for statements by the editors, contributors and advertisers.*

Postmaster, please send changes of address to:

Wisconsin Architect  
 321 S. Hamilton St.  
 Madison, WI 53703



Printed on Recycled Paper

### P R O J E C T S

- 8 Main Hall Renovation, Carroll College  
HGA
- 10 ASQ Center  
Kahler Slater
- 11 Papst Theater Renovation and Addition  
Engberg Anderson Design Partnership, Inc.
- 12 UW Health Clinic  
The Renschler Company, Inc.
- 13 Aurora Women's Pavilion  
Kahler Slater
- 14 Innovative Health and Fitness Center  
the Zimmerman Design Group
- 15 The Milwaukee Rowing Club  
Vetter Denk Architects, Inc.
- 16 Helfaer Field  
Eppstein Uhen Architects

### D E P A R T M E N T S

- 5 GUIDELINES: Precious Artifacts  
James W. Shields, AIA
- 6 Wisconsin Architects Foundation Annual Report
- 18 DIRECTORY: Consultants, Contractors and Manufacturers
- 29 INFORM: The Right Image  
John Luke
- 33 SOCIETY NEWS

### O N T H E C O V E R

Main Hall Renovation, Carroll College  
 Architect: HGA  
 Photography: John J. Korom Photography

WISCONSIN ARCHITECT (ISSN 1083-9178) serves the design and construction industry in Wisconsin with circulation to Architects, Engineers, General Contractors, Business and Interior Designers, Landscape Architects, Certified Planners, Developers, Specifiers, Construction Managers, Facilities Managers, Builders, Manufacturers and Suppliers. *Wisconsin Architect* is the official publication of AIA Wisconsin, A Society of The American Institute of Architects, and is published bimonthly by Wisconsin Architect, Inc. © Copyright 2003 Wisconsin Architect, Inc. All rights reserved. This issue or any part thereof may not be reproduced in any form without written permission of the publisher.



# Window Solutions to Make Your Life Easier



**Punched Openings**  
(West High School - Green Bay)



**Storefronts**  
(Sheboygan County Administration Building)



**Ribbon Applications**  
(Orde Advertsing, Inc. - Green Bay)



**Window Walls**  
(Cedarburg Performing Arts Center)

*Whatever your vision, whatever your budget – VerHalen Pella Commercial Division offers aluminum-clad wood windows and doors to enable you to achieve the look you desire – and the performance your client requires.*

- Product line flexibility
- Options for every budget
- Exceptional lead times
- Outstanding warranty coverage
- Exclusive between-the-glass features



**VERHALEN**

Green Bay • Brookfield • Madison  
Glendale • Appleton • Greenfield  
800-242-1008 • [www.pellacommercial.com](http://www.pellacommercial.com)

OFFICE • RETAIL • REPLACEMENT • RESTORATION

## 2003 AIA Wisconsin Board of Directors:

Thomas R. Cox, AIA, *President*; Michael P. Eberle, AIA, *Vice President*; Cherie K. Claussen, AIA, *Secretary/Treasurer*; Gary R. Gust, AIA, *Past President*; Kent A. Calloway, AIA; Michael Clark, AIA; Gregory A. Douglas, AIA; Gregory P. Fischer, AIA; Paul A. Grzeszczak, AIA; Josh O. Johnson, AIA; Henry A. Kosarzycki, AIA; Amy Kox, AIA; Mark D. Lane, AIA; Stuart LaRose, AIA; Paul F. Martzke, AIA; David R. Oberbeck, AIA; Mark J. Rapant, AIA; Carl J. Scott, AIA; Michael W. Swinghamer, AIA; Michael A. West, AIA; David Zach (Professional Affiliate Representative); Matthew Dumich, Assoc. AIA (Associate Representative); Doug Wegener (UWM Student Representative); William M. Babcock, Hon. AIA, *Executive Director*.

## AIA Wisconsin, A Society of the American Institute of Architects

321 South Hamilton Street  
Madison, Wisconsin 53703  
Phone (608) 257-8477  
email: [aiaw@aiaw.org](mailto:aiaw@aiaw.org)  
Web page: [www.aiaw.org](http://www.aiaw.org)

## Wisconsin Architects Foundation

**Board of Directors:** 321 S. Hamilton St., Madison, Wisconsin 53703; phone (608) 257-8477. Michael K. Kadow, AIA, *President*; James W. Miller, FAIA, *Vice President*; Frederick E. Zimmermann, AIA, *Secretary/Treasurer*; Christine M. Ahl-Ludwig; Mark A. Cullen; Gary D. Davis; David T. Kahler, FAIA; Andrew Pace; James W. Shields, AIA; William M. Babcock, Hon. AIA, *Executive Director*.

**North Central Region AIA:** Lisa L. Kennedy, AIA; A. James Gersich, AIA, *Directors*.

## AIA Southeast Wisconsin:

Mark J. Rapant, AIA, *President*; Stuart C. LaRose, AIA, *Vice President*; Mark D. Lane, AIA, *Secretary/Treasurer*.

## AIA Southwest Wisconsin:

Josh O. Johnson, AIA, *President*; Paul A. Grzeszczak, AIA, *Vice President*; Gregory P. Fischer, AIA, *Secretary/Treasurer*.

## AIA Northeast Wisconsin:

Paul F. Martzke, AIA, *President*; Amy L. Kox, AIA, *Vice President*; Gregory A. Douglas, AIA, *Secretary/Treasurer*.

## AIA Northwest Wisconsin:

Michael W. Swinghamer, AIA, *President*; David R. Oberbeck, AIA, *Vice President*; Sean J. Bujold, AIA, *Secretary/Treasurer*.

## AIA Wisconsin Staff:

William Babcock, Hon. AIA, *Executive Director*  
Karen Engelhart, *Business Manager*  
Mary Orella, *Administration Manager*  
Brenda Taylor, *Communications Manager*  
Tracy Drinkwater, *Administrative Assistant*

## AIA Wisconsin

321 S. Hamilton St., Madison, WI 53703  
Phone: (608) 257-8477  
email: [aiaw@aiaw.org](mailto:aiaw@aiaw.org)  
Web page: [www.aiaw.org](http://www.aiaw.org)



By James W. Shields, AIA

**W**e practice in an era of simulations. Simulated stonework, simulated wood siding, simulated slate roofs, simulated small pane wood windows. Entire new buildings are built as simulations of old ones.

This proliferation of fakery makes historic buildings with authentic material artifacts precious. This preciousness demands that architects entrusted with the restoration of historic buildings and interiors must maintain, stabilize, and display authentic artifacts, and avoid the substitution and addition of simulations.

Essential new work should be unobtrusive, yet clearly contemporary in origin. We should be able to appreciate actual historic objects without confusion. Every old thing should not be replaced by a new simulation of an old thing.

In this era of simulations, this is nearly an impossible task. But if we are to take our cultural responsibilities seriously, it is a path worth following.

This issue of *Wisconsin Architect Magazine* highlights projects of historic restoration, adaptive reuse and healthcare facilities.

... a path  
worth  
following.



Established in 1953, the Wisconsin Architects Foundation is committed to building a better Wisconsin through architectural education. This WAF mission is achieved by awarding tuition scholarships for Wisconsin architectural students and grants for educational programs that advance the profession and enhance public awareness.

**FINANCIAL REPORT**

In the fiscal year that ended June 30, 2003, the WAF received a total of \$27,551 in income from all sources. Expenditures for scholarships, grants and administration totaled \$38,592. The WAF fund equity amounted to \$364,483 at the close of the fiscal year.

Because of the drop in investment income, the WAF scholarship and grant programs depend more than ever on contributions from architects and allied design and construction industry leaders.

In 2002-03, contributions from individuals, firms and organizations increased to \$16,965. These included \$13,840 in regular contributions for ongoing programs and \$3,125 in memorial and special gifts. Investment income of \$4,586 and rental income of \$6,000 accounted for the balance of WAF revenue.

The WAF Board of Directors awarded a total of \$31,825 in scholarships and grants in 2002-03. These WAF scholarships and grants included \$26,875 for students and programs at the UW-Milwaukee School of Architecture & Urban Planning, including a \$3,500 grant for the UWM Architecture Summer Camp. Other WAF scholarships and grants included \$1,800 to support student chapter programs at six different universities and technical colleges, \$1,000 in tuition scholarships for Wisconsin architecture students attending out-of-state schools and a total of \$2,210 in WAF grants of

\$500 or less for educational programs such as the annual High School Design Competition sponsored by AIA Southwest Wisconsin and an Architect Registration Exam (ARE) preparatory program coordinated by AIA Southeast Wisconsin. Other WAF expenses included \$3,017 for accounting, administrative, insurance and printing services and \$3,750 for depreciation.

**ANNUAL MEETING**

The WAF Annual Meeting will be held on April 28, 2004, at the Monona Terrace Community & Convention Center in Madison. The Wisconsin Architects Foundation is governed by a nine-member Board of Directors.

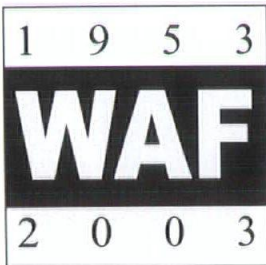
The WAF Board of Directors thanks all of the individuals, firms and organizations who contribute so generously to the success of the Wisconsin Architects Foundation. The accompanying list recognizes WAF contributors in 2002-03. As a 501(c)(3) tax-exempt organization, gifts to the WAF are tax deductible to the full extent allowed by law.

**2003-04 Board of Directors**

- Frederick E. Zimmermann, AIA, *President*
- James W. Shields, AIA, *Vice President*
- Christine Ahl-Ludwig, *Secretary/Treasurer*
- Mark A. Cullen
- Gary D. Davis, AIA
- William A. Doyle, AIA
- James W. Miller, FAIA
- Allyson D. Nemecek, AIA
- Lawrence J. Schnuck, AIA

**Wisconsin Architects Foundation**

321 S. Hamilton St.  
Madison, WI 53703-4000  
608-257-8477





# Thank you!

The Board of Directors of the Wisconsin Architects Foundation is pleased to recognize the following individuals, firms and organizations for their generous support in fiscal year 2001-02.

## REGULAR

### Sustaining Members (\$250 or more)

AIA Wisconsin  
Best Block Company  
Blue Print Service Co. Inc.  
Ronald Gene Bowen, FAIA  
Cooks Reprographics Inc.  
J.P. Cullen & Sons, Inc.  
David T. Kahler, FAIA  
Brian F. Larson, AIA  
James W. Miller, FAIA  
Planning Associates  
Plunkett Raysich Architects  
George A.D. Schuett, FAIA  
David V. Uihlein, Jr., AIA  
Thomas R. Ward

### Contributing Members (\$100 - \$249)

Ayres Associates  
Warren R. Bauer, AIA  
John R. Bruce, AIA  
Mr. & Mrs. John S. Chapman  
Robert D. Cooper, AIA  
William A. Doyle, AIA  
Linda & Michael Eberle, AIA  
A. James Gersich, AIA  
Robert C. Greenstreet  
Richard J. Griese, AIA  
Hallman Lindsay Quality  
Paint  
Curt Hastings  
Ralph H. Jackson Jr., AIA  
Michael K. Kadow, AIA  
Larry H. Kassens, AIA  
Tom Kraemer  
Gene T. LaMuro, AIA  
David Lawson, FAIA & Mary  
Lawson, AIA  
Claude G. Maloney, AIA  
Roger E. McMullin, AIA  
Joel S. Minkoff, Assoc. AIA  
Norman E. Minster, AIA

Thomas J. Morley, AIA, &  
Renee A. Kubesh, AIA  
Renner Architects, LLC  
Daniel J. Roarty, AIA  
John C. Sabinash, AIA  
Carl J. Scott, AIA  
Sheldon Segel, AIA  
John E. Somerville, AIA  
Roy H. Stark, AIA  
Ray Stickler  
Dave Stroik, AIA  
Richard C. Thern, AIA  
Ver Halen, Incorporated  
William P. Wenzler, FAIA  
Robert G. Wirth, AIA  
Fred Zimmermann, AIA

### Donors

(\$31 - \$99)

Christine M. Ahl-Ludwig  
David Anderson  
Robert J. Arntz, AIA  
Jan R. Aslaksen, AIA  
Bamco Architects  
Douglas J. Blakeslee, AIA  
Lawrence E. Bray, AIA  
J. Gerard Capell, AIA  
Bruno J. Franceschi, AIA  
Patricia A. Frost, AIA  
Jerry Germanson, AIA  
Paul A. Grzeszczak, AIA  
Ronald D. Hansche, AIA  
Martha & John G. Horky, AIA  
John P. Jacoby, FAIA  
Larry H. Kassens, AIA  
Jack W. Klund, AIA  
Douglas N. Kozel, AIA  
David A. Lund, AIA  
Thomas P. Luttig, Assoc. AIA  
Erik L. Madisen, AIA  
William J. Montelbano, AIA  
Thomas K. Nisbet, AIA  
William E. Paschke Jr.  
Fred F. Poethig, AIA  
Leonard H. Reinke, FAIA  
Noble E. Rose, AIA  
Roger D. Roslansky, AIA  
Michael L. Schmidt, AIA  
Larry Schnuck, AIA, &  
Kathy Schnuck, AIA  
Gerald A. Schwoch, AIA  
Mac Slater, AIA  
Paul W. Wagner, AIA  
D. Eric Wheeler, AIA  
William W. Williams, AIA

## Members

Helmut Ajango, AIA  
Bouril Design Studio LLC  
Kevin J. Connolly, AIA  
David J. Ewanowski, AIA  
Michael D. Gordon, AIA  
William L. Guerin, AIA  
Theodore H. Irion, AIA  
Gene T. LaMuro, AIA  
Garrick R. Maine, AIA  
Jay A. McLean, AIA  
Miller Masonry Inc  
Harry A. Schroeder, AIA  
Helmut Seaman, AIA  
Robert Byron Smith, AIA  
Gary J. Sobek, AIA  
John W. Thompson  
Trails Media Group, Inc.  
Jerome J. Walkowski, AIA  
Walter L. Wilson, AIA

## MEMORIAL

### CONTRIBUTIONS

**Elmer Johnson  
Scholarship Fund**  
Leonard A. Widen, AIA  
Gary V. Zimmerman, FAIA

**Richard Hunzinger  
Scholarship Fund**  
Gary V. Zimmerman, FAIA

### Other Memorials

Eric Englund, Hon. AIA  
Thomas L. Eschweiler, AIA  
Raimond Juerisson, AIA  
James T. Potter, AIA  
Elayne S. Orr  
Leonard H. Reinke, FAIA  
Edward A. Suchorski, AIA  
Richard C. Thern, AIA

Investing in  
the future of  
Wisconsin's  
architectural  
profession.



# Main Hall Renovation Carroll College

Waukesha, Wisconsin

## ARCHITECT:

HGA

## CONTRACTOR:

Oscar J. Boldt  
Construction

Like unearthing a valuable piece of history, the restoration at Carroll College's (Old) Main Hall uncovered beauty buried within its walls.

Ahead of its time in 1885, the original Carroll College Main Hall featured an unprecedented open floor plate set without any columns or encumbrances. Many students believed that "Old Main" was hung from cable. And, in fact, slender iron rods and wooden trusses do hang "Old Main's" floors. Designed by Chicago Architect Colonel S.V. Shipment, the building is recognized as a handsome structure with its distinctive limestone exterior.

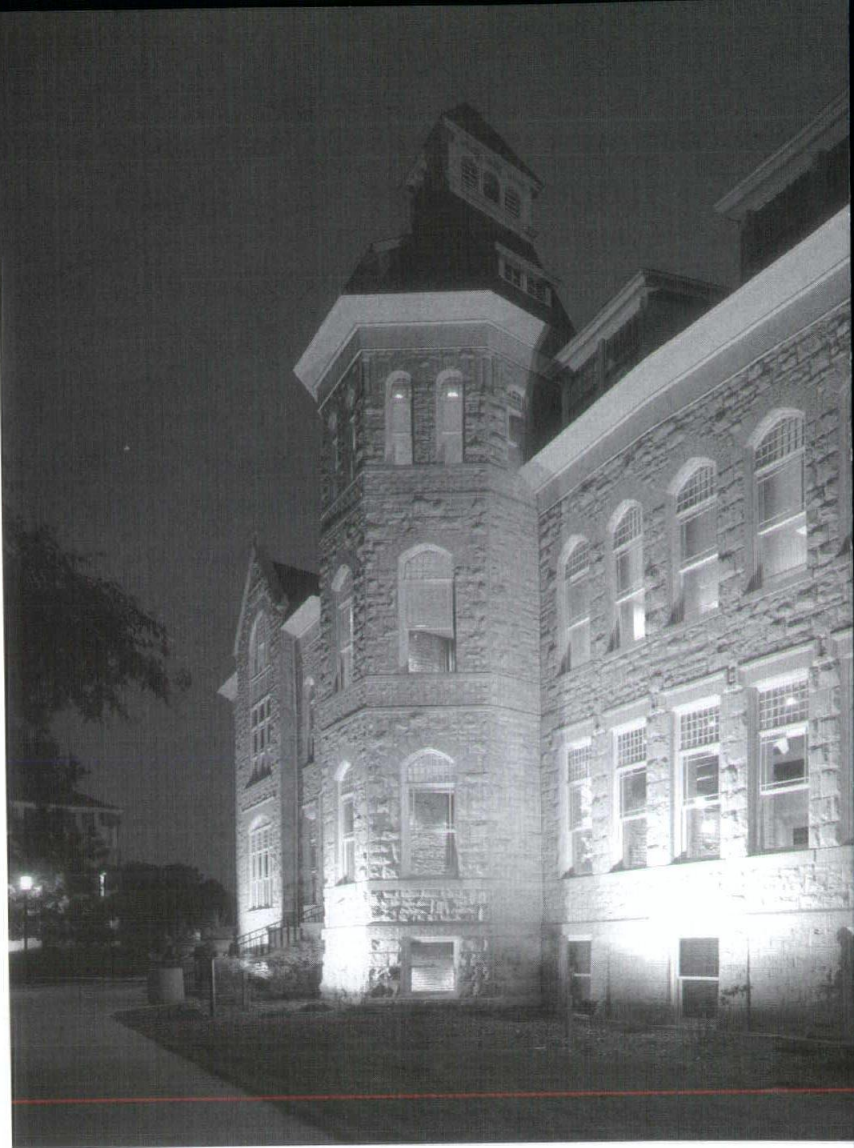
As the plaster was peeled away, it became clear the best way to proceed in representing the glory of the building's past distinctiveness was to display the original structure of the building. To highlight the ingenious design and the extraordinary engineering feat, the design team recommended the beautiful Waukesha limestone walls, iron rods and timber trusses be fully exposed. Now "opened-up," a lighter and more comfortable feel emerged. The high ceilings and large windows bring in natural light, while natural hardwood floors complement the exposed timber trusses.

"Old Main" is both a campus and community landmark. The newly renovated facility now features wonderful reception and gathering areas and houses classrooms for many of the college's academic disciplines. On the first level a learning center was created where formal and informal group learning can take place with 21<sup>st</sup> century multi-media and wireless technology. The group study area is equipped with access to the Internet for laptop computers and provides space for informal discussions to occur. Also, a computer lab just

off the group study area encourages individual laptop study, providing special areas for those with portable computers to connect with the Internet and study quietly.

The building's original structural engineering, allowed for the lower level to house a fully-equipped, 100-seat auditorium-style lecture hall with sloped and tiered seating with unobstructed sightlines. Other new classrooms throughout the three-story building also are outfitted with "smart" technology including state-of-the art multi-media.

Making this transformation of space possible, offices were moved out of "Old Main" to fully utilize the space available for the learning center, classrooms and lecture hall. The result is a more open floor plan with an abundance of natural lighting that adds thirty percent more classroom space to accommodate pressing needs.







Photography: John J. Korom Photography

## LIGHTING AS AN ENHANCEMENT TO TEACHING AND LEARNING

By Jill Cody, LC  
HGA Lighting Designer

Generally it can be said that for lighting to be integrated, it must be incorporated as part of the architecture, not applied to it. Truly incorporating light as part of the design ideally starts at the beginning of the process. In the case of "Old Main," the lighting system was designed as an architectural element that also has an important function—illuminating a multi-purpose space.

- **Subtle, Grazing Light**

The limestone walls of "Old Main" are highlighted with grazing light to reveal their strong character and texture. The light source and mounting location were carefully placed at strategic locations throughout the building to achieve a dramatic effect, highlighting the long-hidden elements that are now revealed as a result of the project.

- **Easy, Flexible and Consistent**

A main objective was achieved in creating this new lecture hall. An easy-to-use system is provided that would be flexible to accommodate multiple uses and several purposes, such as lectures (with or without projection), performance, and ambient light. The preset lighting system also interfaces directly with the audio-visual controls for consistent results. The result is a room with a variety of light sources that can be controlled simply for a particular need, improving teaching and enhancing learning.

- **Viewing Angles and Shielding**

In complex multi-level spaces like the lecture hall it can be difficult to take every viewing angle into account. Simple fluorescent strips are used throughout in reveals within the walls and ceiling clouds. At the ceiling clouds, the light source was shielded with a small strip of frosted acrylic to create a finished look. This luminous source fulfills the function of a decorative fixture and provides a revealed light source for the eye.

Overall, it was important to consider the need to carefully differentiate between old and new elements in this renovation of "Old Main." This, in turn, drove the selection of the "seen" or decorative fixtures so that they would not be confused with historic elements in the building. Many other examples of the unique mixture of new and old are seen in classrooms and communal spaces.



Milwaukee, Wisconsin

## ARCHITECT:

Kahler Slater

## CONTRACTOR:

J.H. Findorff &  
Son, Inc.

In 1887, the neoclassical building became home to the Midwest's first department store and served for years as Milwaukee's hub of trade. As the retail business prospered, the store expanded its operations into neighboring buildings, creating one continuous street face on the block. Multiple renovations ensued, including an addition of a white glazed terra cotta tile facade and 420-foot riverfront colonnade. In 1997, retail activity was discontinued.

A development team purchased the property in 1998 and hired designers to develop it into a thriving urban center. The space now includes 485 square-feet of Class "A" office space, retail, a hotel and underground parking.

Financed in part with federal tax-credits for historical preservation, the exterior work was required to meet strict federal guidelines, including the restoration of 1,295 windows and the careful cleaning and replacement of the terra cotta exterior.

The oldest building section (a non-conforming four-story building) was torn down in order to create a courtyard entrance. A two-story screen wall was designed and built to enclose the courtyard. The new courtyard features a high-tech, perforated metal canopy and abstract sculpture garden.

Inside, a few remnants of the old building remained—columns, ceiling details, a terrazzo staircase—but most of the original interior fabric had been lost due to a long history of remodeling. The design team, faced with no other choice than to largely gut the interior, utilized this opportunity to incorporate new, state-of-the-art mechanical, electrical, HVAC, fire protection and telecommunications systems. These changes ensured that the building could accommodate its current and future tenants. A new and very contemporary lobby boasts floors of white Carrara marble and black granite, walls of white opaque glass and tawny ash, and stainless accents.

Photography: HNK Architectural Photography, Inc.



## ARCHITECT:

Engberg  
Anderson Design  
Partnership, Inc.

The Historic Theater resides on a major intersection in the heart of a major City's downtown.

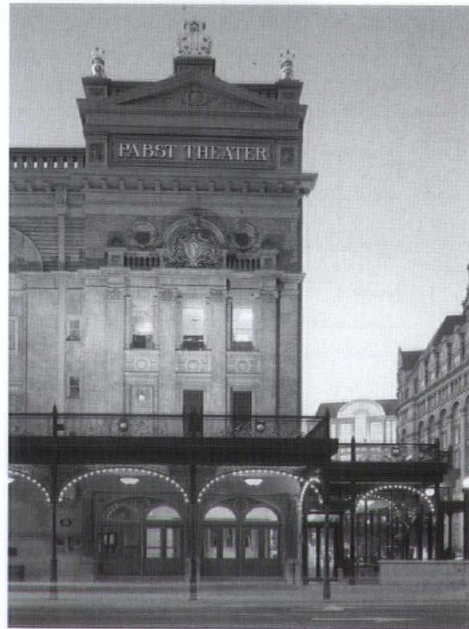


Providing Theater stabilization, improvements and lobby expansion through a contextual and historically appropriate design.

The Theater is now accessible by all patrons on all levels of seating; patron amenities have been improved thus resulting in increased revenues.

The exterior has been secured by stabilizing the foundation, providing a new roof, tuck pointing masonry and repairing damaged terra cotta.

A charming and historically appropriate expansion of the main lobby area was based on continuing the existing interior lobby character while the exterior was designed to appear as if it had always been there. The exterior continues the original elements in exact replicas of the original cast iron, arched loggia surrounding the expansion and cast bronze over stainless steel front doors.

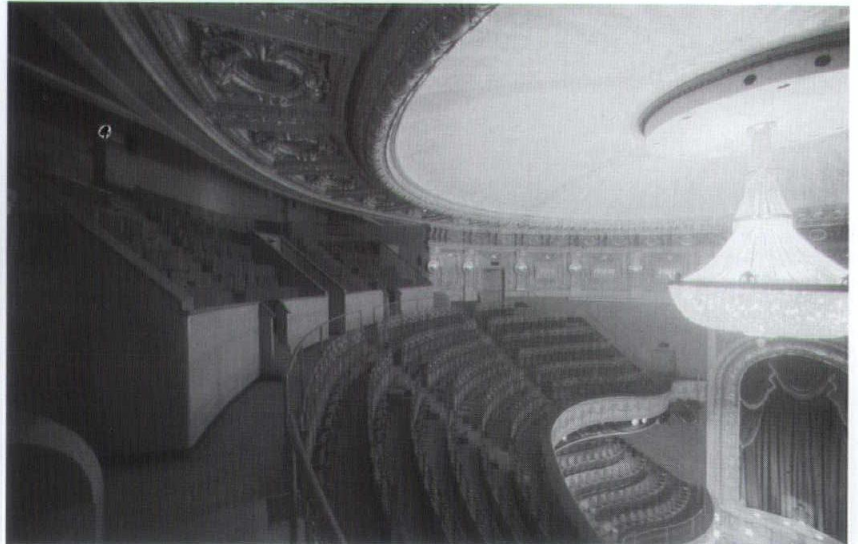


Elevators stop at all seating levels so that physically challenged patrons now have access to any seating area in the theater.

Basement space provides storage space and space for a catering kitchen to serve the expanded lobby, catering storage, elevator and mechanical controls and an office/workshop for the maintenance engineer. Additional toilet facilities are included in the new basement.

Renovation of the second balcony known as the Gallery included larger seats. One aisle of seating was removed to expand the width of the seating aisle for increased legroom and ease of walking to your seat.

Additional upgrades include installation of gallery air conditioning, repaired paint cracks in plaster walls, theater seats were recovered and the auditorium and lobby were re-carpeted.



Photography:  
HNK Architectural Photography



Portage, Wisconsin

ARCHITECT:

The Renschler Company, Inc.

CONTRACTOR:

The Renschler Company, Inc.



Program requirements for the UW Health Clinic outpatient Clinic included internal medicine, family medicine and rheumatology practices.

Family practice and internal medicine components were to be grouped around two nursing stations utilizing centrally-located, shared accounting and support areas.

Outpatient services were to be grouped around a discreet sub-waiting area. The layout will accommodate possible future expansion of exam rooms, nursing stations and outpatient services.

Early in the design process the design team chose to explore a creative, untraditional approach to the structure and its exterior finishes. The utilization of a steel systems constructed structure incorporating steel frames and purlins resulted in a 15-20 percent reduction in structural costs.

To complement the split-faced masonry, a concealed fastener exterior metal panel system was applied to create a durable skin.

The savings from a steel systems constructed approach made it possible to increase the amount of interior volume, glazing and feature finishes. The savings also made it possible to incorporate higher eaves and clerestory windows to introduce natural light to the central workspaces.



Photography: Del Brown Photography



The Pavilion is set within a healing garden on an existing hospital campus that is centrally located in a metropolitan area.

Flowing water and views of the garden set the tone of the guest experience as they enter the garden foyer with intimate seating near the hearth. Amenities include the Personal Transitions bookstore, Garden of Senses boutique and Honey Creek Cafe. Original art, flowing water, living plants and hand-painted finishes add to the restorative environment.

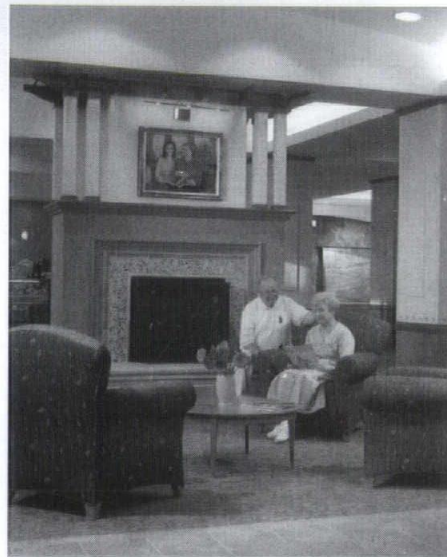
Along with the cafe on the first floor, is the Education Center and Rejuvenation Suite. Guests may observe yoga, nutritional counseling classes in one of the education rooms, or see an outdoor Tai Chi class in the center of the garden.

The first floor women's health services include comprehensive breast services, gynecologic cancer services, cardiac awareness/ prevention programs and osteoporosis services. Exam and treatment rooms extend the sense of beauty and provide detailed amenities that enhance a woman's sense of dignity. To achieve a holistic approach to women's care, complementary health services such as acupuncture, massage and biofeedback are also available within the spa-like setting.

The second floor features spacious birthing rooms that use organic colors and textures, while providing the benefits of the latest technology. Patient bathrooms have whirlpool tubs. Direct access to caesarean delivery rooms and a Neonatal Intensive Care Unit provide reassurance of state-of-the-art clinical care.

The postpartum and women's surgical rooms have painted casework, hand-painted poetry and decorative stenciled walls. Most importantly, medical equipment is out of view but easily accessible by staff.

The fourth and fifth floors of the Pavilion serve as office space for physicians. Each office is intricately connected to all of the Pavilion's services.



Photography: Hedrich Blessing and Jim Brozek Photography


**ARCHITECT:**

Kahler Slater

**CONTRACTOR:**

C.G. Schmidt, Inc.



Franklin, Wisconsin

ARCHITECT:

the Zimmerman  
Design Group

CONTRACTOR:

Peter Scherrer



The Center is the embodiment of a new trend in physical therapy. Therapists and doctors work together to prepare and monitor individualized rehabilitation programs. These exercise regiments begin with specific rehabilitation intended to evolve into a routine for a healthy life-style.

Photography:  
Greg Gent Studios

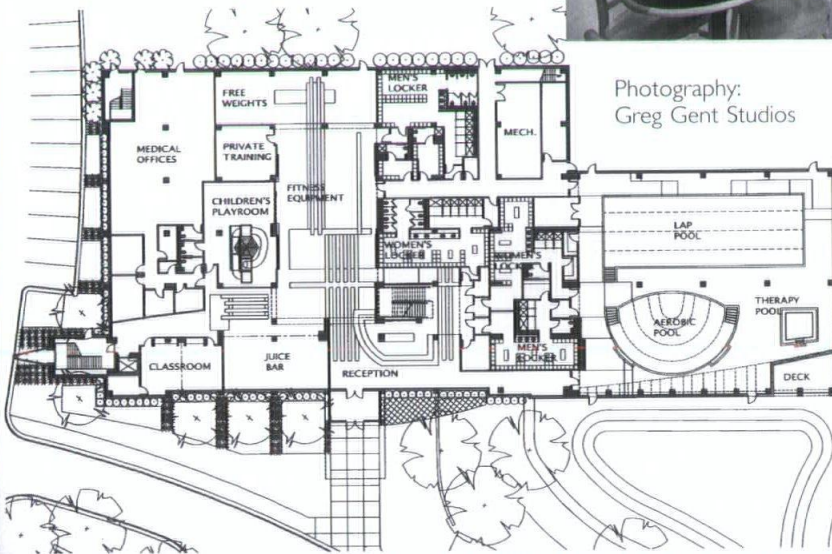
More than a health club and more than a clinic, these facilities center on core physical therapy services. These care-giving programs are enhanced with amenities that appeal to the health club market.

The building is designed to create an atmosphere conducive to healing. The program is fully revealed at the front door with activities surrounding the lobby. Receptionists serve a dual role ushering patients to the clinic and attending to the operation of the health club.

Visitors have a view of activity in the two-story light-filled primary exercise room, with glimpses of walkers and joggers along the balconies surrounding the room, along with aerobics classes and cardiovascular exercise rooms.

Materials and colors were chosen to compliment an environment of well-being. Daylight fills each space, maintaining a connection with the outdoors.

Developers of the facility and the architect worked diligently to select a site that is clearly visible from a main Franklin thoroughfare and generate a building design that both announces its presence and piques the interest of passersby with bold exterior shapes and exciting colors.





The new 10,000 square-foot concrete storage facility houses boating equipment for the Milwaukee Rowing Club and Marquette University Rowing Club. In addition, the boathouse will be the focus of an expanded junior rowing program for city and metro area youth. Constructed below grade, the structure maintains the green space and park-like setting for the surrounding condominium community.

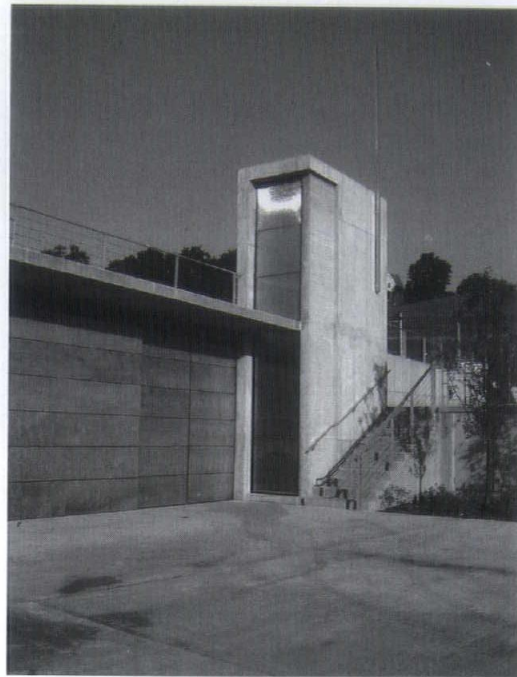
The boathouse was designed as a virtual non-building. It is a landscape insertion creating space for simple functions by retaining the surrounding soil. A simple material palette recalls the raw industrial artifacts seen across the river. The clean lines of the building take their cues from the sleek pragmatism of the boats stored inside. The boathouse solution consists of four main elements: roof, tower, curtain wall and plaza.

The building's green roof slopes up gradually toward the river, becoming an extension of the adjacent Kilbourn Park bluff. The roof serves as a public park and vantage point overlooking the Milwaukee River.

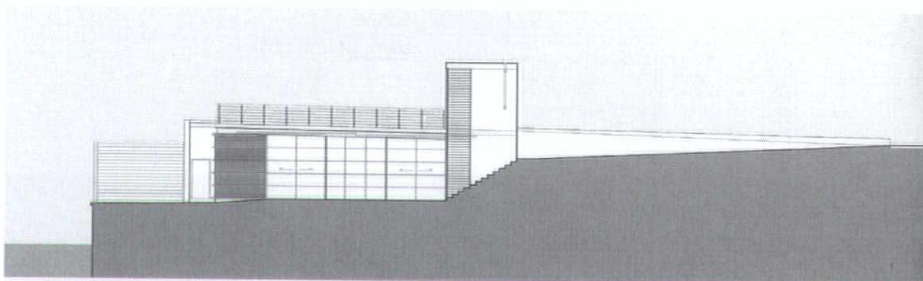
The most recognizable element from the street is the building's 24-foot oar tower. This vertical element defines the entrance to the site and acts as an illuminated beacon and signage at night. It functions as the storage location for the 12-foot long oars used to row the racing sculls. The stainless steel mast extending alongside the tower serves to exhaust the methane gases produced by the once contaminated soil beneath the building.

A custom polycarbonate curtain wall faces the river and extends the entire length of the building. The proportions are derived from the dimensions of the rowing sculls stored within. Horizontal wood mullions reference the craft of boat-building and soften the building's exterior appearance. In the evening the boathouse softly glows along the river.

The public plaza serves as a staging area for launching the sculls and also is used to hose down the boats before they are returned for storage. The plaza acts as a public gathering place during rowing club practices as well as regattas and provides public access to the Milwaukee River.



Photography:  
Vetter Denk Architects, Inc.



## ARCHITECT:

Vetter Denk  
Architects, Inc.

## CONTRACTOR:

Beyer  
Construction

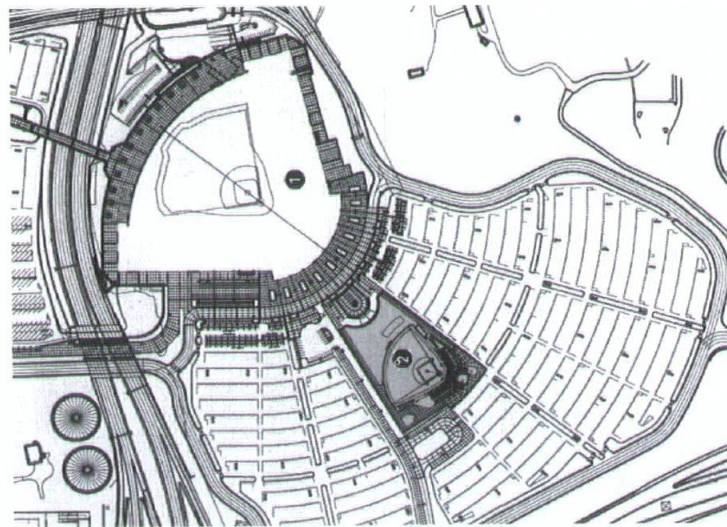


ARCHITECT:

Eppstein Uhen  
Architects

CONTRACTOR:

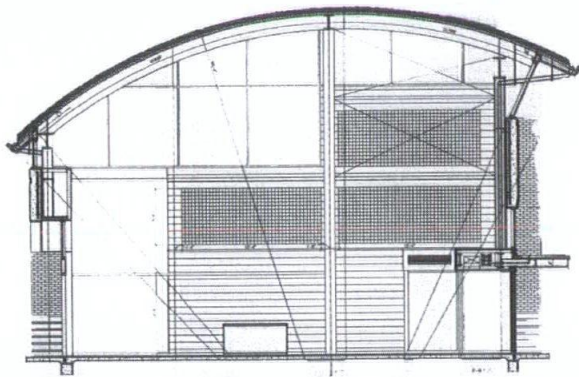
Hunzinger  
Construction



The youth baseball park is located precisely on the site of the former major league park, giving a historical nod to that stadium's importance in the minds of local sports fans. An adjacent lawn area acts as an extension of the ball park plaza and an entrance to one of the newest major league baseball parks in America. It is surrounded on three sides by parking areas for this and the major league ball park.

This youth baseball park's design echoes the form of the adjacent major league ball park

with curved metal roofs, brick and pre-cast concrete enclosing the walls, an exposed steel structure, canopies and banners. It is compatible with and complimentary to the much larger facility located to its south.



Inside, everyone can find a good seat to watch the game. In addition to bleacher seating for 502 fans and a maximum of 220 at table seating, the baseball park has picnic shelters with curved roofs on both right field and left field foul lines to support tailgating and a playground area located south of the field.

The foul poles are reclaimed poles from the old major league ball park that previously occupied the site. It functions as an event site, offering a flexible meeting room located on the upper plaza behind home plate as a gathering place for fans before, during and after the game. Restrooms and concession areas are incorporated into the enclosing walls of the building. Pole-mounted lighting allows night games.

The ball park supports the master plan philosophy of the major league ball park grounds: to create an event location for all ages. Children and adults of all ages from communities across the state have flocked to the site to play baseball in the shadow of the nearby major league park.

Photography: Eric Oxendorf Studio





(ERIC OXENDORF)



THIRTY YEARS AND COUNTING

PHOTOGRAPHY FOR ALL THINGS ARCHITECTURE

414.273.0654

eric@ericoxendorf.com

## Architect for Medical Facilities

### MILWAUKEE, WISCONSIN

TEI Corporation (TEI), headquartered in Milwaukee, Wisconsin, is a multi-disciplined engineering and design/build firm that offers challenging and rewarding growth opportunities to our employees. Our client base includes municipal, state, and federal agencies and multiple Fortune 100 companies. We are currently seeking a licensed architect with approximately 10 years of experience in planning, design and construction. Experience with medical facilities is preferred.

This position will require the selected candidate to lead a team from programming and schematic design through design development and contract documents. The selected candidate will also be involved in proposal development, contract administration with clients and subcontractors, and design/build project management. The position will require moderate travel primarily in the Midwest and Southeastern regions of the United States.

Candidates must have demonstrated leadership abilities, strong verbal and written communication skills, as well as excellent personal and professional references. Must be a licensed architect with ability to become licensed in select states.

TEI offers a competitive salary and benefits package. Qualified candidates should submit resume and cover letter to:

TEI Corporation  
Attn: CJD

325 East Chicago Street  
Milwaukee, Wisconsin 53202

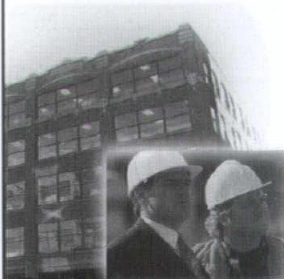
No Recruiters / Please refer to Job No. WI0304

Email: [carol.dunst@triadengineering.com](mailto:carol.dunst@triadengineering.com)

Websites: [www.teicorporation.com](http://www.teicorporation.com)

[www.triadengineering.com](http://www.triadengineering.com)

Drug Free Workplace

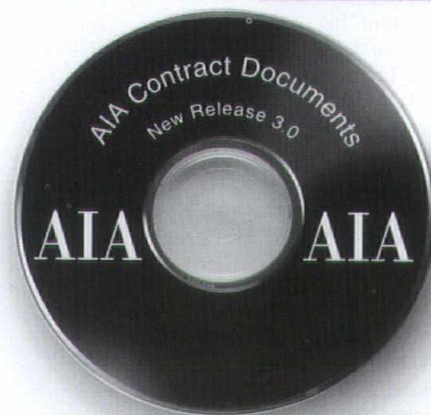



**TEI** CORPORATION

AN EQUAL OPPORTUNITY/AFFIRMATIVE ACTION EMPLOYER

Nothing else even comes close.

AIA Contract Documents are the standard in the building industry. Created with the consensus of contractors, attorneys, architects and engineers. Honed razor-sharp by test after legal test spanning 110 years. Now, with custom formatting and flexible pricing. Call for your free demo disk of new release 3.0 today. **(608) 257-8477**



 THE AMERICAN  
INSTITUTE  
OF ARCHITECTS

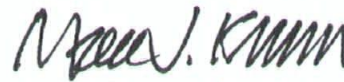


Teaming and working collaboratively with outside sources of expertise helps architects provide their clients with successful projects. This annual *Wisconsin Architect Consultants, Contractors & Manufacturers Directory* was developed to aid architecture firms, clients and the public.

To be listed, the consultant must offer services to design and construction professionals in Wisconsin. The companies listed will welcome the opportunity to discuss your projects with you.

The *Wisconsin Architect Consultants, Contractors & Manufacturers Directory* is organized by an index of categories referencing providers. Listings include the following information on each company: company name, web address, mailing address, telephone and fax numbers, email address, contact person and description of the company's service. The information was provided by the companies.

You are encouraged to keep the *Wisconsin Architect Consultants, Contractors & Manufacturers Directory* handy for reference throughout the year. Contact the consultants listed for further information about their practice and the professional services/products they can provide for your projects. If you have any suggestions for improving the *Directory* or wish to be included in future editions, please contact: AIA Wisconsin (608) 257-8477/1-800-ARCHITECT or email: [wiaarchitect@aia.org](mailto:wiaarchitect@aia.org).



Mark J. Kruser, AIA, Chair  
Editorial Advisory Board

*Wisconsin Architect magazine is the official publication of AIA Wisconsin, a Society of The American Institute of Architects.*

## INDEX

<b>3D Visualization</b>	
Eppstein Uhen Architects Inc. ....	23
Fortel Studios .....	23
<b>3D Visualization/GIS</b>	
National Survey & Engineering .....	26
<b>Accessibility/ADA Code</b>	
Martenson & Eisele, Inc. ....	26
Superior Entrance Systems, Inc. ....	30
<b>Aquatics/Pools</b>	
Water Technology Inc. ....	30
<b>Architectural Coatings</b>	
Cubic Wall Systems .....	22
<b>Architectural Consulting</b>	
Angus-Young Associates .....	20
Architectural Design Consultants, Inc. ....	21
Engberg Anderson Design Partnership, Inc. ....	22
Eppstein Uhen Architects Inc. ....	23
Kueny Architects, LLC .....	25
LHB Engineers & Architects .....	25
Marathon Engineers/ Architects/ Planners, LLC .....	25
Martenson & Eisele, Inc. ....	26
Mead and Hunt, Inc. ....	26
Potter Lawson, Inc. ....	27
Somerville, Inc. ....	29
The Kubala Washatko Architects Inc. ....	30
Vierbicher Associates, Inc. ....	30
<b>Asbestos Abatement</b>	
Balestrieri Environmental & Development Inc. ....	21
<b>Athletic Equipment</b>	
Porter Athletic Equipment Co. ....	27
<b>Audio/Visual</b>	
MCSi/Midwest .....	26
<b>Automatic Door Equipment</b>	
Automatic Entrances of Wisconsin, Inc. ....	21
<b>Building Envelope Consultants</b>	
Facility Engineering, Inc. ....	23
International Masonry Institute .....	24
Scott McNeill Enterprises LLC .....	28
<b>Building Products Distributor</b>	
Hallmark Building Supplies, Inc. ....	24
<b>Cast Stone</b>	
Building Stone Products .....	22

<b>Ceramic Tile</b>	
American International Tile .....	20
Tom D. Lynch, CSI .....	25
<b>Civil Engineering</b>	
Arnold & O'Sheridan, Inc. ....	21
Larson Engineering of Wisconsin .....	25
Martenson & Eisele, Inc. ....	26
SmithGroup JJR LLC .....	28
<b>Computer Imaging &amp; Animation</b>	
Fortel Studios .....	23
<b>Concrete Masonry &amp; Concrete Products</b>	
County Materials Corporation .....	22
<b>Construction Management</b>	
Adolfson & Peterson Construction .....	20
Beyer Construction .....	21
CG Schmidt Construction, Inc. ....	22
Friede & Associates, LLC .....	23
Kraemer Brothers, LLC .....	24
Kraus-Anderson Construction Company - Midwest Div. ....	24
Oscar J. Boldt Construction .....	27
<b>Consulting Engineering Services</b>	
Affiliated Engineers Inc. ....	20
APEX Engineering, Inc. ....	20
Graef, Anhalt, Schloemer & Associates, Inc. ....	23
Kapur & Associates, Inc. ....	24
Lang Associates .....	25
LHB Engineers & Architects .....	25
National Survey & Engineering .....	26
Soils & Engineering Services, Inc. ....	29
Somerville, Inc. ....	29
Strass-Maguire & Associates, Inc. ....	29
STS Consultants, Ltd. ....	29
<b>Contract Documents</b>	
AIA Wisconsin .....	20
<b>Contractor/Subcontractor</b>	
Conservatek Architectural Systems .....	22
<b>Cost Estimating/Project Management</b>	
CG Schmidt Construction, Inc. ....	22
<b>Design/Build</b>	
PLANNING Design Build Inc. ....	27
<b>Electrical System Design</b>	
Arnold & O'Sheridan, Inc. ....	21
Strang, Inc. ....	29
Town & Country Electric .....	30



<b>Environmental Services/Studies</b>	
Balestrieri Environmental & Development Inc. ....	21
SmithGroup JJR LLC .....	28
<b>Executive Search</b>	
Resource Staffing Consultants .....	28
<b>Face Brick Distributor</b>	
Building Stone Products .....	22
County Materials Corporation .....	22
Janesville Brick & Tile .....	24
<b>Fire Protection/ Engineering/Design</b>	
Ahern Fire Protection .....	20
<b>Flooring</b>	
Dur-A-Flex, Inc. ....	22
<b>Food Service/Kitchen</b>	
Mackesey and Associates, LLC .....	25
<b>Geotechnical and Environmental Drilling</b>	
Soil Structure Interface Consultants .....	28
Soils & Engineering Services, Inc. ....	29
<b>Historical Restoration</b>	
Beyer Construction .....	21
Eppstein Uhen Architects Inc. ....	23
Facility Engineering, Inc. ....	23
Isthmus Architecture, Inc. ....	24
<b>HVAC Design</b>	
Arnold & O'Sheridan, Inc. ....	21
Fredericksen Engineering, Inc. ....	23
Strang, Inc. ....	29
<b>Insulated Concrete Forms</b>	
Scott McNeill Enterprises LLC .....	28
<b>Insulation</b>	
Cubic Wall Systems .....	22
<b>Insurance Services</b>	
Mortenson, Matzelle & Meldrum, Inc. ....	26
<b>Interior Design</b>	
Eppstein Uhen Architects Inc. ....	23
Strang, Inc. ....	29
<b>Laboratory Furniture Systems</b>	
A.T. VILLA USA, Inc. - Corporate Headquarters .....	20
<b>Land Surveyors</b>	
Martenson & Eisele, Inc. ....	26
National Survey & Engineering .....	26
<b>Landscape Architecture</b>	
Arnold & O'Sheridan, Inc. ....	21
Buettner and Associates, Inc. ....	21
Paragon Design Group LLC .....	27
Schreiber/Anderson Associates .....	28
SmithGroup JJR LLC28 .....	28
Vierbicher Associates, Inc. ....	30
<b>Laundry Design</b>	
Mackesey and Associates, LLC .....	25
<b>Lead-based Paint Abatement</b>	
Balestrieri Environmental & Development Inc. ....	21
<b>Legal Services</b>	
Whyte Hirschboeck Dudek S.C. ....	30
<b>Lighting Design</b>	
Creative Lighting Design & Engineering .....	22
Orion Energy Systems .....	26
Schuler & Shook Inc. ....	28
Town & Country Electric .....	30
<b>Marketing/Advertising/P.R.</b>	
Fortel Studios .....	23
<b>Masonry Consulting</b>	
International Masonry Institute .....	24
Quikrete® Wisconsin Inc. ....	28
<b>Models/Renderings</b>	
Fortel Studios .....	23
<b>Mold Remediation</b>	
Balestrieri Environmental & Development Inc. ....	21
<b>Paint</b>	
Mautz Paint Co. ....	26
<b>Parking</b>	
Arnold & O'Sheridan, Inc. ....	21
<b>Photography (Architectural)</b>	
Eric Oxendorf Studio .....	23
John Luke Photography .....	24
<b>Planning &amp; Zoning</b>	
Martenson & Eisele, Inc. ....	26
Russell Knetzger, AICP .....	28
Vierbicher Associates, Inc. ....	30
<b>Plumbing Design</b>	
Arnold & O'Sheridan, Inc. ....	21
Strang, Inc. ....	29
<b>Precast Concrete</b>	
County Materials Corporation .....	22
Mid-States Concrete Products Co. ....	26
Spancrete Industries, Inc. ....	29
<b>Ready Mix Concrete</b>	
Lycon Inc. ....	25
<b>Renaissance Stone</b>	
Building Stone Products .....	22
<b>Roofing &amp; Sheet Metal</b>	
F.J.A. Christiansen Roofing Co., Inc. ....	23
<b>Roofing Consultants</b>	
Facility Engineering, Inc. ....	23
Inspec, Inc. ....	24
Roofing Consultants Ltd. ....	28
<b>Security Systems</b>	
Town & Country Electric .....	30
<b>Signage</b>	
Poblocki & Sons, LLC .....	27
<b>Site Amenities</b>	
Thomas Steele, a division of Trilary Inc. ....	30
<b>Site Design</b>	
Paragon Design Group LLC .....	27
<b>Skylights</b>	
Major Industries, Inc. ....	25
<b>Sports Field Design Support</b>	
Inspec, Inc. ....	24
SmithGroup JJR LLC .....	28
<b>Sports Field Support</b>	
Paragon Design Group LLC .....	27
<b>Structural Engineering</b>	
Arnold & O'Sheridan, Inc. ....	21
Gunnar Malm & Associates Inc. ....	23
Larson Engineering of Wisconsin .....	25
Pierce Engineers Inc. ....	27
<b>Sustainable Design Services</b>	
Eppstein Uhen Architects Inc. ....	23
Graef, Anhalt, Schloemer & Associates, Inc. ....	23
LHB Engineers & Architects .....	25
Paragon Design Group LLC .....	27
PLANNING Design Build Inc. ....	27
SmithGroup JJR LLC .....	28
<b>Technology Consultants</b>	
Arnold & O'Sheridan, Inc. ....	21
<b>Theater/ Auditorium</b>	
Schuler & Shook Inc. ....	28
<b>Thermal &amp; Moisture Protection Consultants</b>	
Facility Engineering, Inc. ....	23
<b>Timber Frame</b>	
R.L. Merlie Construction Co. ....	28
<b>Value Management</b>	
Boldt Technical Services .....	21
<b>Wall Systems</b>	
Scott McNeill Enterprises LLC .....	28
<b>Window and Patio Doors</b>	
Builders World Inc. ....	22



**A.T. VILLA USA, Inc. - Corporate Headquarters**

WEB page: [www.atvilla.com](http://www.atvilla.com)

1717 Pearl St  
Waukesha, WI 53186-5626  
Phone: (800) 779-4242  
FAX: (262) 548-1208  
E-mail: [sales@atvilla-usa.com](mailto:sales@atvilla-usa.com)  
Contact: Jeff Caplan

613 Williamson St - Showroom  
Madison, WI 53703  
Phone: (608) 442-8164  
Fax: (608) 442-8163  
email: [sales@atvilla-usa.com](mailto:sales@atvilla-usa.com)  
Contact: Jeff Caplan

Addendum laboratory furniture system is a freestanding modular framework for benches that allows fast and easy reconfiguration, providing unmatched stability and flexibility. Changes in technology, personnel or space requirements are easily implemented with minimal disruption to the laboratory, making it ideal for rapidly growing or changing research environments. More than just furniture, Addendum is a total scientific environment, including walls, doors, windows benches and accessories. From concept to completion, A.T. Villa provides laboratory solutions for all major markets worldwide.

**Adolfson & Peterson Construction**

WEB page: [www.a-p.com](http://www.a-p.com)

2600 Stewart Ave  
Wausau, WI 54401  
Phone: (715) 842-2222  
FAX: (715) 848-8088  
E-mail: [Kschon@a-p.com](mailto:Kschon@a-p.com)  
Contact: Kal Schon

6080 Inwood Dr  
Eau Claire, WI 54701  
Phone: (715) 842-2222  
Fax: (715) 848-8088  
email: [Kschon@a-p.com](mailto:Kschon@a-p.com)  
Contact: Kal Schon

General construction, construction management and design/build services for commercial, industrial and institutional projects with values of \$1 million to \$50 million - work throughout Wisconsin.

**Affiliated Engineers Inc.**

WEB page: [www.aeieng.com](http://www.aeieng.com)

PO Box 44991  
Madison, WI 53744-4991  
Phone: (608) 238-2616  
FAX: (608) 238-2614  
E-mail: [jbauer@aeieng.com](mailto:jbauer@aeieng.com)  
Contact: Julie Bauer

Affiliated Engineers, Inc. (AEI) is a professional consulting firm specializing in the design of mechanical, electrical, piping and information technology (MEP/IT) systems. Our services also include instrumentation and controls, field and construction services, cost estimating, commissioning, architectural lighting, utility master planning and sustainable design. AEI's mission focuses on design efforts for sophisticated and technically complex projects in markets such as research, healthcare, higher education and commercial. Headquartered in Madison, Wisconsin, we also have offices in Chapel Hill, NC; Gainesville, FL; Metro DC; Seattle, WA and the San Francisco Bay area. The company staff of dedicated professionals exceeds 450, with over 100 registered professionals.

**Ahern Fire Protection**

WEB page: [www.ahernfire.com](http://www.ahernfire.com)

4247 Argosy Ct  
Madison, WI 53714-3101  
Phone: (608) 216-0283  
FAX: (608) 216-0284  
E-mail: [kcollins@ahernfire.com](mailto:kcollins@ahernfire.com)  
Contact: Ken Collins

**AIA Wisconsin**

WEB page: [www.aiaw.org](http://www.aiaw.org)

321 S Hamilton St  
Madison, WI 53703-4000  
Phone: (608) 257-8477  
FAX: (680) 257-0242  
E-mail: [aiaw@aiaw.org](mailto:aiaw@aiaw.org)  
Contact: Mary Orella

AIA Wisconsin is the state's only authorized full-service distributor of AIA Contract Documents. AIA Wisconsin members benefit from 25% discount on paper documents. Look for a list of AIA Documents and synopses on the AIA Wisconsin Web site, [www.aiaw.org](http://www.aiaw.org). New and entirely redesigned AIA Contract Documents software based on the widely-accepted Microsoft Word platform is available for demo and download at [www.aiaw.org](http://www.aiaw.org).

**American International Tile**

850 Pratt Blvd  
Elk Grove Village, IL 60007-5117  
Phone: (800) 859-6638  
FAX: (847) 364-5404  
E-mail: [aminttile@mindspring.com](mailto:aminttile@mindspring.com)  
Contact: Charles J. Cuccia

We provide high quality porcelain, engineered stone and ceramic tile products, metal, glass, special effect and igreení (recycled) tiles for commercial and residential applications. As a full line distributor, we provide tile setting and underlayment systems, crack isolation, sound control and water proofing systems, a floor warming system and tile finishing products. i.e., edge protection and transition profiles, sealers and cleaning products. Most importantly, we specialize in superior product knowledge so that we can provide the necessary product information to specifiers to allow them to make educated decisions when selecting products for specific projects.

**Angus-Young Associates**

WEB page: [www.angusyong.com](http://www.angusyong.com)

555 S River St  
Janesville, WI 53548-4783  
Phone: (608) 756-2326  
FAX: (608) 756-0464  
E-mail: [jeffh@angusyong.com](mailto:jeffh@angusyong.com)  
Contact: Jeffrey Hazekamp, AIA

Over 45 years providing high quality design, we offer integrated architectural, interiors and engineering disciplines. Our project's success comes from a philosophy of listening, understanding and responding to our client's goals. Our team approach focusing on design quality and service makes working with Angus-Young an enjoyable and enriching experience. While offering traditional design through construction services, we also provide a variety of special services. These include programming, feasibility, and master-planning studies; site evaluations and planning; mechanical, electrical, plumbing and structural engineering consulting. We provide services to a wide variety of clients including municipalities, libraries, medical, office, retail, manufacturing and industrial.

**APEX Engineering, Inc.**

601 S Farwell St  
Eau Claire, WI 54701-3829  
Phone: (715) 835-7736  
FAX: (715) 835-3771  
E-mail: [apex@apexengineering.biz](mailto:apex@apexengineering.biz)  
Contact: Richard J. Anderson, PE

The firm of APEX Engineering, Inc., is a consulting engineering firm specializing in HVAC and plumbing systems for buildings. We also have extensive expertise in industrial specialized environments such as food processing, electronics cleanroom, computer equipment, plastics, vehicle assembly, as well as call centers and large-scale printing facilities. We provide a complete range of mechanical engineering services including concept and budget, mechanical system analysis, construction documents for new and remodeled facilities, regulatory agency submittal, design/build services to contractors and construction observation. 70% of our work is serving architects and their clients in the plan and spec market.



AIA Wisconsin  
(608) 257-8477  
[www.aiaw.org](http://www.aiaw.org)



**Architectural Design Consultants, Inc.**WEB page: [www.adci.ws](http://www.adci.ws)

245 Munroe St  
Lake Delton, WI 53940  
Phone: (608) 254-6181  
FAX: (608) 254-2139  
E-mail: [adci@adci.ws](mailto:adci@adci.ws)  
Contact: Robert W. Nagel, PE

161 Horizon Dr Ste 102  
Verona, WI 53593  
Phone: (608) 848-2324  
Fax: (608) 848-5122  
E-mail: [adci2@adci.ws](mailto:adci2@adci.ws)  
Contact: Dwaine C. Kieler, PE

Architectural Design Consultants, Inc. (ADCI), consists of a team of qualified professionals providing architectural and engineering services. Our areas of specialization include hotel/resort design with elaborate indoor aquatic facilities, churches, multi-housing/condominiums and retail projects. ADCI is committed to personalized one-on-one relationships with our clients. In addition to featured architecture of exterior and interior spaces, we provide extensive evaluation of our clients needs. ADCI prepares analysis for long range planning, building programming and detailed cost estimating. We have achieved an outstanding reputation for producing high quality projects that meet or exceed owner expectations.

**Arnold & O'Sheridan, Inc.**WEB page: [www.arnoldandosheridan.com](http://www.arnoldandosheridan.com)

1111 Deming Way  
Madison, WI 53717-1953  
Phone: (608) 821-8500  
FAX: (608) 821-8501  
E-mail: [mschmidt@arnoldandosheridan.com](mailto:mschmidt@arnoldandosheridan.com)  
Contact: Michael L. Schmidt, AIA, PE, SE

4125 N 124th St  
Brookfield, WI 53005  
Phone: (262) 783-6130  
Fax: (262) 783-5121  
e-mail: [pkleinke@arnoldandosheridan.com](mailto:pkleinke@arnoldandosheridan.com)  
Contact: Pauline Kleinke

Arnold & O'Sheridan, Inc., is a full-service, professional engineering firm, which since 1964 has served the needs of the building and construction industry throughout the United States. A&O provides engineering services focused in the healthcare, justice, industrial, institutional and architectural markets. We provide structural, electrical, mechanical, plumbing, civil, technology, high-voltage power and precast engineering services. The firm is dedicated to providing innovative engineering solutions to the complex engineering problems faced by our clients. Arnold & O'Sheridan, Inc., has offices located in Madison and Brookfield, WI.

**Automatic Entrances of Wisconsin, Inc.**WEB page: [www.aewinc.net](http://www.aewinc.net)

1712 Paramount Ct  
Waukesha, WI 53186-3967  
Phone: (262) 549-8600  
FAX: (262) 549-8604  
E-mail: [cindy@aewinc.net](mailto:cindy@aewinc.net)  
Contact: Tim Doughman

Recommendation, design, specification, installation and service of automatic door equipment. Systems include power assist and full-speed swing operators, automatic slide doors, automatic and manual revolving doors, manual ICU slide packages. Complete product offerings healthcare, retail, ADA and commercial projects. Statewide support and service.

**Balestrieri Environmental & Development Inc.**WEB page: [www.balestrierigroup.com](http://www.balestrierigroup.com)

PO Box 860  
Elkhorn, WI 53121  
Phone: (262) 742-3625  
FAX: (262) 742-3754  
E-mail: [kbal@balestrierigroup.com](mailto:kbal@balestrierigroup.com)  
Contact: Kenneth R. Balestrieri

We are an environmental contracting firm whose mission is to assist our clients in reducing their exposure to environmental liability and hazards. We look forward to achieving success for all parties involved.

**Beyer Construction**WEB page: [www.beyer.com](http://www.beyer.com)

3200 S 166th St  
New Berlin, WI 53151-4141  
Phone: (262) 789-6040  
FAX: (262) 789-6055  
E-mail: [george.beyer@beyer.com](mailto:george.beyer@beyer.com)  
Contact: George M. Beyer

**Construction Management**—A full-service construction firm incorporated in 1951 and located in New Berlin, Wisconsin, our firm specializes in providing construction services and managing high image and technically difficult projects. We have extensive experience in delivering challenging projects to corporate, health care, elder care, industrial, religious and educational clients. In all aspects of our work, we stress a team approach that builds on the knowledge, abilities and strengths of the client, design professionals and construction specialists involved in each project. The advantages of this approach stem from trust and cooperation between architect, constructor and owner.

**Historic Renovations**—Experts in historical renovations. For decades, Beyer Construction has been rebuilding historical structures, giving architecturally unique buildings new lives and extending their years of usefulness. A careful and respectful approach is the secret to our success. It starts with the cost analysis and planning stages, and continues through the construction schedule. Ask our clients about our performance. Charles Allis Art Museum, The Lynde & Harry Bradley Foundation, Northern Trust Bank, UWM Foundation, Inc., and Wisconsin Conservatory of Music. Our affiliations: Historic Milwaukee, Historic Third Ward of Milwaukee, Milwaukee County Historical Society, State Historical Society of Wisconsin and Wisconsin Trust for Historic Preservation.

**Boldt Technical Services**WEB page: [www.theboldtcompany.com](http://www.theboldtcompany.com)

2525 Roemer Rd  
Appleton, WI 54911-8623  
Phone: (920) 225-6153  
FAX: (920) 739-4511  
E-mail: [john.koga@boldt.com](mailto:john.koga@boldt.com)  
Contact: John Koga, AIA, CVS

Boldt's certified value management specialists apply value analysis with skill and experience to ensure high project value. This objective service is available independent of other design/construct obligations. Related services include design-to-cost techniques, technical risk analysis and constructability improvement.

**Buettner and Associates, Inc.**WEB page: [www.buettner.biz](http://www.buettner.biz)

6928 N Santa Monica Blvd  
Fox Point, WI 53217-3942  
Phone: (414) 351-7080  
FAX: (414) 351-7085  
E-mail: [info@buettner.biz](mailto:info@buettner.biz)  
Contact: Dennis Buettner

Buettner & Associates is an award winning landscape architecture, urban design and planning firm. For more than twenty years, we have been designing landscapes for parks, botanic gardens, residences and commercial venues. Our talented team of landscape architects is skilled in all phases of project development from master planning through construction management and maintenance inspections. We provide innovative designs reflecting a wide variety of architectural styles from historic to contemporary.

**ADVERTISE TO ARCHITECTS**

Published quarterly, *Wisconsin Architect* reaches architects, as well as other design and construction professionals in Wisconsin.

Vendors can participate in the *Wisconsin Architect* advertising program by placing ads, inserting info sheets, including newsletters or sponsoring advertorials.

For more information, contact *Wisconsin Architect* at (608) 257-8497 ext. 102 or [wiaarchitect@aiaaw.org](mailto:wiaarchitect@aiaaw.org)



**Builders World Inc.**

WEB page: [www.bwinet.com](http://www.bwinet.com)

W227N913 Westmound Dr  
Waukesha, WI 53186  
Phone: (800) 686-2206  
FAX: (262) 542-1832  
E-mail: [brepert@bwinet.com](mailto:brepert@bwinet.com)  
Contact: Bill Reppert

**Building Stone Products**

WEB page: [www.buildingstoneproducts.com](http://www.buildingstoneproducts.com)

1553 Fox Run  
Twin Lakes, WI 53181  
Phone: (262) 889-4979  
FAX: (262) 862-7612  
E-mail: [gene1stone@aol.com](mailto:gene1stone@aol.com)  
Contact: Gene Guetzow

Building Stone distributes masonry products of the highest quality. The products we market to design professionals are renaissance stone, thunderstone cast stone, Indiana limestone and clay brick. Building Stone has a limestone and renaissance stone fabrication plant, estimating and drafting offices, a brick yard and a show room. We provide masonry products including literature, samples and cost information to design professionals in all of Wisconsin and Illinois.

**CG Schmidt Construction, Inc.**

WEB page: [www.cgschmidt.com](http://www.cgschmidt.com)

11777 W Lake Park Dr  
Milwaukee, WI 53224-3021  
Phone: (414) 577-1093  
FAX: (414) 577-1155  
E-mail: [daveg@cgschmidt.com](mailto:daveg@cgschmidt.com)  
Contact: Dave Giordano

Founded in 1920, CG Schmidt, Inc., provides complete general contracting, construction management and design/build services for health care, senior living, educational, cultural, corporate, industrial, religious and parking structure markets. CG Schmidt: Breaking New Ground.

**Conservatek Architectural Systems**

WEB page: [www.conservatek.com](http://www.conservatek.com)

498 Loop 336 E  
Conroe, TX 77301  
Phone: (936) 539-1747  
FAX: (936) 539-5355  
E-mail: [bkartes@conservatek.com](mailto:bkartes@conservatek.com)  
Contact: Robert J. Kartes, CSI, CDT

8620 W Ludington Ct  
Wauwatosa, WI 53226-2720  
Phone: (414) 771-1703  
Fax: (414) 771-1704  
Contact: Robert J. Kartes, CSI, CDT

Ideally blending form and function, Conservatek's glazing systems offer architects and designers an unmatched selection of building envelope shapes and geometric designs that can serve as stunning feature elements in a wide variety of applications. Elegant in appearance and boasting simple lines, Conservatek's glazing systems allows for maximum transmission of light by combining high-strength aluminum alloys and an innovative rigid joint design. This can be custom designed into a broad range of forms and are readily available in a variety of architectural finishes. Let us help you design the future!

**County Materials Corporation**

WEB page: [www.countymaterials.com](http://www.countymaterials.com)

205 North St  
Marathon, WI 54448-9647  
Phone: (715) 848-1365  
FAX: (715) 443-3691

County Materials Corporation has been a trusted leader in the production of concrete products and the supply of related construction materials for over 55 years. Using state-of-the-art facilities, County Materials manufactures and sells an expansive product line that includes decorative concrete masonry, burnished and glazed masonry, brick and stone veneers, concrete landscaping products, ready mix concrete\*, Hollowcore roof and floor systems, Penstar Concrete Form masonry units, and a variety of specialty and precast concrete products. Visit our Web site for the latest news and product updates at [countymaterials.com](http://countymaterials.com). \*Available at select locations.

**Creative Lighting Design & Engineering**

WEB page: [www.execpc.com/~creatlit/](http://www.execpc.com/~creatlit/)

N140W13843 Cedar Ln  
Germantown, WI 53022  
Phone: (262) 242-4432  
FAX: (262) 242-1020  
E-mail: [creatlit@execpc.com](mailto:creatlit@execpc.com)  
Contact: Marty Peck

Creative Lighting Design & Engineering is an independent design and consultation firm specializing in the expressive use of light. Headed by Marty Peck, this award-winning firm is one of the highest qualified and most experienced in the state of Wisconsin. Since 1991 we have developed dramatic, yet economical, lighting solutions to define architecture, drive emotions, focus attention and create excitement. We have a thorough background in thematic, hospitality, retail, residential, landscape and industrial type projects and our services include full concept development, high-quality CAD drawings, photo-accurate computer renderings and engineering services.

**Cubic Wall Systems**

WEB page: [www.cubicwallsystems.com](http://www.cubicwallsystems.com)

4921 Triangle St  
McFarland, WI 53558-9358  
Phone: (608) 838-6607  
FAX: (608) 838-6576  
E-mail: [cubic@cubicwallsystems.com](mailto:cubic@cubicwallsystems.com)  
Contact: Cliff Lewis

We are experts in Facadism-exterior cladding treatments. Because of Cubic Wall Systems' volume and scope of business, we offer advantages no other contractor can. You'll quickly discover the unique advantages we offer our award-winning design capabilities, state-of-the-art computer visualizations, new and retrofit qualifications, unparalleled dedication to safety and one of the largest, most specialized crews in the Midwest. If you're seeking successful results for your next project, we are an ideal match. Through experience, teamwork and innovation, our business is turning vision into reality. Only Cubic offers SystemBrickT. Inquire about our exciting wall application that authentically simulates the appearance of masonry.

**Dur-A-Flex, Inc.**

WEB page: [www.dur-a-flex.com](http://www.dur-a-flex.com)

95 Goodwin St  
E Hartford, CT 06108  
Phone: (800) 253-3539  
FAX: (860) 528-2802  
E-mail: [info@dur-a-flex.com](mailto:info@dur-a-flex.com)  
Contact: Rick Olejnik

Whatever your flooring needs may be, Dur-A-Flex has the right solutions. A manufacturer of quality epoxy, urethane, methyl methacrylate (MMA) and specialty colored aggregates, we offer a complete line of quality flooring systems. Our versatile seamless flooring applications provide improved safety, minimum downtime, easy maintenance and long-lasting performance. Dur-A-Flex is known for consistent and dependable products combined with just-in-time ordering. We provide technical assistance, product samples and literature, as well as regional sales and marketing support. With over 35 years of experience, innovation and a nationwide network of quality flooring contractors, Dur-A-Flex, Inc., is the smart choice.

**Engberg Anderson Design Partnership, Inc.**

WEB page: [www.eadp.com](http://www.eadp.com)

611 N Broadway Ste 517  
Milwaukee, WI 53202-5004  
Phone: (414) 944-9000  
FAX: (414) 944-9100  
E-mail: [joannej@eadp.com](mailto:joannej@eadp.com)  
Contact: Joanne Johnson

Engberg Anderson Design Partnership, Inc. (EADP), a professional corporation located in Milwaukee, is dedicated to quality client service and design excellence. Our mission is to consistently seek for our clients the appropriate balance between the desired image and level of quality, functional requirements, project schedule and budgetary parameters. Areas of project specialization include hospitality/convention facilities, corporate office buildings, cultural facilities, libraries, medical facilities, multi-unit housing facilities and urban planning. In addition to full service design, Engberg Anderson provides specialized services in interior design, master planning, site planning/evaluations, adaptive reuse, space planning, cost estimating, programming, feasibility assessments, ADA compliance assessments, zoning and code analysis and historic preservation.



**Eppstein Uhen Architects Inc.**WEB page: [www.eppsteinuhen.com](http://www.eppsteinuhen.com)

333 E Chicago St  
Milwaukee, WI 53202  
Phone: (414) 271-5350  
FAX: (414) 271-7794  
E-mail: [richt@eppsteinuhen.com](mailto:richt@eppsteinuhen.com)  
Contact: Richard J. Tennesen

Eppstein Uhen Architects' Visualization Department helps clients understand how a product looks before it's delivered. Through computer models, digital imagery, photomontages and animations, design decision can be discussed and reviewed well in advance of construction. Our computer renderings can be delivered on printed media, an interactive CD, or VHS. This flexibility allows for a number of presentation options that compliment any given project.

**Eric Oxendorf Studio**WEB page: [www.ericoxendorf.com](http://www.ericoxendorf.com)

1442 N Franklin Pl  
Milwaukee, WI 53202  
Phone: (414) 273-0654  
FAX: (414) 273-1759  
E-mail: [ericko@ericoxendorf.com](mailto:ericko@ericoxendorf.com)  
Contact: Eric Oxendorf

Our 28th year of high impact location interior, exterior and architectural material/product photography. Location lighting problem solving. Large, medium and small camera formats-traditional film and digital. Also, specialized gear for aerial and panoramic viewpoints. When in the big city, stop by the studio and visit JoAnn the studio manager. Call for our new portfolio.

**Facility Engineering, Inc.**WEB page: [www.facilityengineeringinc.com](http://www.facilityengineeringinc.com)

101 Dempsey Rd  
Madison, WI 53714-3003  
Phone: (608) 240-9110  
FAX: (608) 240-9112  
E-mail: [dan@facilityengineeringinc.com](mailto:dan@facilityengineeringinc.com)  
Contact: Dan Maki, PE, CSI

**F.J.A. Christiansen Roofing Co., Inc.**WEB page: [www.christiansenroofing.com](http://www.christiansenroofing.com)

2101 W Purdue St  
Milwaukee, WI 53209-0350  
Phone: (414) 445-4141  
FAX: (414) 449-4748  
E-mail: [miked@christiansenroofing.com](mailto:miked@christiansenroofing.com)  
Contact: Michael M. Dowd, ext. 139

Complete roofing and sheet metal services for commercial, industrial, institutional and small business buildings of all sizes. Approved by major manufacturers to furnish, install and maintain the following systems: built-up roofing, modified Bitumen roofing systems, single-ply roofing, tapered roof fills, urethane foam, shingle, architectural metal roofing systems, and industrial sheet metal as well as historical sheet metal restoration. Offering a full range of roofing systems and solutions including, Total Roofing Management (TRM), patch and repair maintenance programs, responsive emergency repairs, budgeting, planning and forecasting as well as life cycle costing, inspection and analysis, tear-off and recover solutions and energy surveys.

**Fortel Studios**WEB page: [www.fortelstudios.com](http://www.fortelstudios.com)

4921 Triangle St  
McFarland, WI 53558-9358  
Phone: (608) 838-0099  
FAX: (608) 838-6576  
E-mail: [fortel@fortelstudios.com](mailto:fortel@fortelstudios.com)  
Contact: Rob Peterson

Vision accomplished! Fortel Studios is unique. We provide design, 3D illustration, narrated virtual tours, marketing and media services that help your projects command attention and grab headlines. Our digitally created presentations are powerful tools for architects, developers, building owners, design/builders, general contractors and other construction professionals. Whether you are making design decisions, seeking financing or winning municipal approvals, Fortel can help make it happen. Businesses use the same tools to interest tenants, gain community support and pre-market to retail customers. Let us put our experience, technological innovation and commitment to work for you.

**Fredericksen Engineering, Inc.**

12308 Corporate Pkwy Ste 400  
Mequon, WI 53092-3381  
Phone: (262) 243-9090  
FAX: (262) 243-9233  
E-mail: [john@fredeng.com](mailto:john@fredeng.com)  
Contact: John Fredericksen

Fredericksen Engineering, Inc., established in 1953, provides complete HVAC design services throughout the Midwest. Areas of concentration include educational facilities, county administration buildings, county jail buildings, industrial buildings, nursing homes and industrial process design. Fredericksen Engineering is dedicated to providing quality engineering services. Our mission is to provide the highest level of service to each project and each client.

**Friede & Associates, LLC**WEB page: [www.friede.com](http://www.friede.com)

364 South Ave  
Reedsburg, WI 53959-0248  
Phone: (608) 524-4383  
FAX: (608) 524-8393  
E-mail: [sgtruehl@friede.com](mailto:sgtruehl@friede.com)  
Contact: Scott Truehl

1402 Pankratz St  
Madison, WI 53704  
Phone: (608) 244-1900  
Fax: (608) 244-8008  
Contact: Scott Truehl

Friede & Associates is a full service general contracting firm with offices in Reedsburg and Madison. Since 1945, we have been dedicated to providing outstanding service to our clients and professional growth and fulfillment for our employees. Our design-build construction approach has served clients in the commercial, manufacturing, industrial, banking and institutional markets extensively. By partnering with independent architects, we are able to create project teams with experience and creativity. We listen to our clients, share their values and respond to their needs. In short, we take great pride in helping our clients see their dream become a reality.

**Graef, Anhalt, Schloemer & Associates, Inc.**WEB page: [www.gasai.com](http://www.gasai.com)

125 S. 84th St Ste 401  
Milwaukee, WI 53214-1470  
Phone: (414) 259-1500  
FAX: (414) 259-0037  
E-mail: [john.kissinger@gasai.com](mailto:john.kissinger@gasai.com)  
Contact: John Kissinger

8501 W Higgins Rd Ste 280  
Chicago, IL 60631-2801  
Phone: (773) 399-0112  
Fax: (773) 399-0170

1150 Springhurst Dr Ste 201  
Green Bay, WI 54304-5950  
Phone: (920) 592-9440  
Fax: (920) 592-9445

5126 W Terrace Dr Ste 111  
Madison, WI 53718-8343  
Phone: (608) 242-1550  
Fax: (608) 242-0787

322 S Michigan Ave Ste 1400  
Chicago, IL 60604  
Phone: (312) 582-2000  
Fax: (312) 939-7014

Graef, Anhalt, Schloemer & Associates, Inc. (GAS) is a consulting firm of engineers, scientists and other professionals dedicated to providing quality services in structural, civil/site, transportation and MEP engineering, environmental science, field services, sustainable site design and landscape design services. We pride ourselves in getting to know our clients and understanding their unique concerns. Whether your specialty is healthcare, hotels, industrial, educational, retail entertainment, public works or many other types of developments, we can help. Call us and see how our depth of experience and expertise can provide efficient and flexible solutions for your project.

**Gunnar Malm & Associates Inc.**WEB page: [www.gmaengineers.com](http://www.gmaengineers.com)

6402 Odana Rd  
Madison, WI 53719-1123  
Phone: (608) 288-1108  
FAX: (608) 288-1109  
E-mail: [gmalm@gmaengineers.com](mailto:gmalm@gmaengineers.com)  
Contact: Gunnar Malm

Gunnar Malm & Associates, Inc. (GMA Engineers), is a professional engineering firm specializing in structural engineering services for architects and building owners. Our services include the structural design of steel, concrete, timber and wood framed structures with emphasis on the detailing of exposed structures. Additionally, GMA provides technical services for the renovation of concrete and masonry buildings. GMA has extensive experience in the design of new parking structures and the renovation and condition studies of existing parking structures. GMA Engineers also provides building envelope condition surveys including cladding, roof systems and design services for remediation needs.



**Hallmark Building Supplies, Inc.**WEB page: [www.hllmark.com](http://www.hllmark.com)

6060 N 77th St  
Milwaukee, WI 53218  
Phone: (800) 274-7842  
FAX: (800) 688-7842  
E-mail: [response@hllmark.com](mailto:response@hllmark.com)  
Contact: Jennifer Young

Founded in 1974, Hallmark is a marketer and wholesale distributor of category-leading consumer branded, building materials to residential and commercial markets. Our product lines are DuPont Corian<sup>®</sup> solid surfaces, DuPont Zodiaq<sup>®</sup> quartz surfaces and DuPont Tyvek<sup>®</sup> weatherization systems.

**International Masonry Institute**WEB page: [www.imiweb.org](http://www.imiweb.org)

1406 Bus Hwy 18-151 Ste 203  
Mount Horeb, WI 53572  
Phone: (608) 437-6871  
FAX: (608) 437-6941  
E-mail: [pconway@imiweb.org](mailto:pconway@imiweb.org)  
Contact: Patrick J. Conway, AIA

The International Masonry Institute (IMI) approach represents a strategic partnership between the International Union of Bricklayers and Allied Craftworkers (BAC) and the International Council of Employers of Bricklayers and Allied Craftworkers (ICE). Our technical resources include construction guides, case studies, product and systems information and code updates. Our design and technical assistance services include project troubleshooting, drawing and specification review and more. We offer numerous IMI continuing education programs, including lunchbox seminars, educational conferences and hands-on craft demonstrations, allowing design professionals to keep abreast of masonry industry trends and new products. AIA/CES Registered Provider.

**Inspec, Inc.**WEB page: [www.inspec.com](http://www.inspec.com)

555 W Layton Ave Ste 420  
Milwaukee, WI 53207-5952  
Phone: (414) 744-6962  
FAX: (414) 744-6981  
E-mail: [dvelcheck@inspec.com](mailto:dvelcheck@inspec.com)  
Contact: David Velcheck, CCS, CSI

**Isthmus Architecture, Inc.**WEB page: [www.is-arch.com](http://www.is-arch.com)

613 Williamson St Ste 203  
Madison, WI 53703-3515  
Phone: (608) 294-0206  
FAX: (608) 294-0207  
E-mail: [isthmus@is-arch.com](mailto:isthmus@is-arch.com)  
Contact: Charlie Quagliana, AIA

As a collaborative of architects and historians, our commitment is to preserve the built environment in a manner that respects original context and design intent. We are a full-service firm within our historic preservation specialization. The services we provide range from historic structure reports, facility assessments, master plans and national landmark nominations to restoration, rehabilitation, adaptive reuse and new construction especially within a historic context. We ascribe to National Park Service standards and sustainable design principles. Recognizing the multidisciplinary process required of many preservation projects, we attach great importance to effective teaming relationships with other A/E firms and professionals from other disciplines.

**Janesville Brick & Tile**

1801 W Court St  
Janesville, WI 53547-0564  
Phone: (800) 348-1632  
FAX: (608) 752-7465  
E-mail: [janesvilbric@jvlnet.com](mailto:janesvilbric@jvlnet.com)  
Contact: Douglas iDukei Kelly

**John Luke Photography**WEB page: [www.johnlukephotography.com](http://www.johnlukephotography.com)

1043 E Eldorado St  
Appleton, WI 54911  
Phone: (920) 739-9361  
FAX: (920) 739-9361  
E-mail: [john@johnlukephotography.com](mailto:john@johnlukephotography.com)  
Contact: John Luke

Specialist in photographing architectural interiors, exteriors and building products for architects, designers, contractors and manufacturers. Services to consider using a professional architectural photographer include promotional brochures, trade publication ads/articles, competition submissions, presentations, project documentation, press releases, Web sites and interior display. Additional services include digital retouching to minimize utilities or other distracting elements, and the ability to deliver finished materials in a variety of modes including transparencies, portfolio and display style prints, high resolution scans on a CD for printed publication, jpeg scans on a CD for Web sites or electronic presentations. Visit my Web site to view portfolio.

**Kapur & Associates, Inc.**WEB page: [www.kapurengineers.com](http://www.kapurengineers.com)

7711 N Port Washington Rd  
Milwaukee, WI 53217  
Phone: (414) 351-6668  
FAX: (414) 351-4117  
E-mail: [aburke@kapur-assoc.com](mailto:aburke@kapur-assoc.com)  
Contact: Amber Burke

Kapur & Associates, Inc., offers comprehensive engineering services, spanning eight core competencies with a staff of 100 professionals and two branch offices. It is our expectation to expand our alliances within the AIA membership providing quality engineering services with a strong focus on civil site design, electrical design, environmental, site survey and construction management. We have become a trusted business partner and leader by providing exceptional expertise and technical knowledge across every phase of a project. We thrive on forging a close, professional and honest relationship with our clients and partners.

**Kraemer Brothers, LLC**WEB page: [www.kraemerbrothers.com](http://www.kraemerbrothers.com)

925 Park Ave  
Plain, WI 53577  
Phone: (608) 546-2411  
FAX: (608) 546-2509  
E-mail: [kraemer@kraemerbrothers.com](mailto:kraemer@kraemerbrothers.com)  
Contact: Tom Kraemer

Kraemer Brothers, LLC, celebrated its 55th year in business in 2003. The company is a construction leader in Wisconsin with an annual volume of approximately \$100 million. The unblemished record of timely project completion is a reflection of its unique philosophy. Kraemer Brothers self-performs all concrete, masonry, steel erection and carpentry work, thus assuring total control over critical schedule items.

**Kraus-Anderson Construction Company - Midwest Div.**WEB page: [www.krausanderson.com](http://www.krausanderson.com)

5250 E Terrace Dr Ste H  
Madison, WI 53718-8345  
Phone: (608) 240-4623  
FAX: (608) 240-4625  
E-mail: [toconnor@k-a-c.com](mailto:toconnor@k-a-c.com)  
Contact: Tom O'Connor

Specializing in providing general construction, construction management, design/build services, referendum assistance and facilities planning and management.



AIA Wisconsin  
(608) 257-8477  
[www.aiaw.org](http://www.aiaw.org)



**Kueny Architects, LLC**WEB page: [www.kuenyarch.com](http://www.kuenyarch.com)

1505 Corporate Dr Ste 100  
Pleasant Prairie, WI 53158-  
Phone: (262) 857-8101  
FAX: (262) 857-8103  
E-mail: [jonw@kuenyarch.com](mailto:jonw@kuenyarch.com)  
Contact: Jon P. Wallenkamp

A Kenosha area practice based on 45 years of experience in community involvement, concern and development. Specific interests include the environment, energy conservation and long life, low maintenance, quality construction. Designs reflect personal expression and sensitivity.

**Lang Associates**WEB page: [www.langassociates.net](http://www.langassociates.net)

510 N 17th Ave  
Wausau, WI 54401-2901  
Phone: (715) 845-1333  
FAX: (715) 848-9156  
E-mail: [langwau@langassociates.net](mailto:langwau@langassociates.net)  
Contact: Randy Lang

1496 Bellevue St  
Green Bay, WI 54311  
Phone: (920) 468-6808  
Fax: (920) 468-6686  
e-mail: [langgb@langassociates.net](mailto:langgb@langassociates.net)  
Contact: Dan Hanson

PO Box 44629  
Madison, WI 53744-0629  
Phone: (608) 238-3424  
Fax: (608) 238-3969  
e-mail: [rflux@langassociates.net](mailto:rflux@langassociates.net)  
Contact: Robert Lux

Lang Associates, Inc., is a full-service consulting engineering firm that specializes in the design of power, lighting, automation, telecommunications and mechanical systems for a wide variety of applications. Our experience includes system design for educational, healthcare, criminal justice, municipal, aeronautic, and industrial, as well as SCADA and control systems for water and wastewater facilities.

**Larson Engineering of Wisconsin**WEB page: [www.larsonenr.com/WI.htm](http://www.larsonenr.com/WI.htm)

1500 N Casaloma Dr Ste 302  
Appleton, WI 54913-8219  
Phone: (920) 734-9867  
FAX: (920) 734-9880  
E-mail: [info@larsonwi.com](mailto:info@larsonwi.com)  
Contact: Mark E. Mayer

Larson Engineering of Wisconsin is an established and growing multi-disciplined engineering firm with talented and experienced personnel. We have provided structural engineering for nearly every type of project. Civil engineering focuses on the design of building sites, storm water and utilities. At Larson Engineering our range of skills and strong sense of service gives our clients, large and small, the depth of experience they demand with the personal attention they deserve.

**LHB Engineers & Architects**WEB page: [www.lhbcorp.com](http://www.lhbcorp.com)

21 W Superior St Ste 500  
Duluth, MN 55802-2085  
Phone: (218) 727-8446  
FAX: (218) 727-8456  
E-mail: [joellyn.gum@lhbcorp.com](mailto:joellyn.gum@lhbcorp.com)  
Contact: Joellyn Gum

250 3rd Ave N Ste 450  
Minneapolis, MN 55401  
Phone: (612) 338-2029  
Fax: (612) 338-2088  
Email: [liz.wortman@lhbcorp.com](mailto:liz.wortman@lhbcorp.com)  
Contact: Liz Wortman

Established in 1966, LHB provides practical and cost-effective design solutions for government, housing, health care, education, workplace, pipeline and public works. Having all disciplines together streamlines communication keeping projects on time and budget. Services include architecture (design, feasibility studies, facility maintenance), interiors (image, space programming, finishes, furniture), landscape architecture (site plans, erosion control, wetlands), survey (boundary, legal), civil (transportation, municipal/public works, water resources/environmental), structural (industrial and building structures, structural investigations) and mechanical/electrical engineering (lighting, HVAC, telecommunications distribution, piping, energy analysis.) Special services include high performance sustainable design, community consensus building and historic preservation.

**Lycon Inc.**WEB page: [www.lyconinc.com](http://www.lyconinc.com)

1110 Harding St  
Janesville, WI 53547-0427  
Phone: (608) 754-7701  
FAX: (608) 754-8555  
E-mail: [cpdonajkowski@lyconinc.com](mailto:cpdonajkowski@lyconinc.com)  
Contact: Chris Donajkowski

Ready mixed concrete & construction aggregates.

**Tom D. Lynch, CSI**

N3231 Tipperary Point Rd  
Poynette, WI 53955-9416  
Phone: (608) 635-2607  
FAX: (608) 635-4190  
E-mail: [tdmjlynch@aol.com](mailto:tdmjlynch@aol.com)  
Contact: Tom D. Lynch, CSI

Tom D. Lynch is a technical consultant to the ceramic tile industry. His thirty nine years experience include becoming a union tile setter by age twenty one, spending twenty years as a tile contractor in the States of Wisconsin and Alaska, and three years as the U.S. Technical Services Manager for the largest manufacturer of tile-setting mortars and grouts in the world. This technical exposure at the national level coupled with his many years of practical experience in the field uniquely qualifies Mr. Lynch as one of the most knowledgeable ceramic tile consultants in the industry. Specifications, product recommendations, and on-site evaluations of installation failures are the services offered.

**Mackesey and Associates, LLC**WEB page: [www.mackesey.com](http://www.mackesey.com)

6000 Gisholt Dr Ste 200  
Madison, WI 53713-4816  
Phone: (608) 270-1178  
FAX: (608) 270-1192  
E-mail: [paul@mackesey.com](mailto:paul@mackesey.com)  
Contact: Paul A. Mackesey

Mackesey and Associates, LLC, is a foodservice and laundry design and consulting firm. Our goal is to provide design and management consulting services in accordance with the needs and requirements of our clients. Our capabilities include process engineering, operations reviews, market and feasibility studies, bench marking, facility program development, foodservice and laundry facility design, operational implementation and follow-up services. Our time is targeted carefully to produce results where they are most needed.

**Major Industries, Inc.**WEB page: [www.majorskyights.com](http://www.majorskyights.com)

PO Box 306  
Wausau, WI 54402-0306  
Phone: (715) 842-4616  
FAX: (715) 848-3336  
E-mail: [info@majorskyights.com](mailto:info@majorskyights.com)  
Contact: Tina Brandt

Major Industries manufactures a full line of custom skylights and translucent curtainwall. Glazing options include glass, acrylic, polycarbonate twinwall or insulated translucent fiberglass panels. Major Industries has installed more than 6,500 monumental skylights throughout the world. Please visit Major Industries' Web site at [www.majorskyights.com](http://www.majorskyights.com) or call toll free 1-(888)-SkyCost for more information.

**Marathon Engineers/ Architects/ Planners, LLC**WEB page: [www.marathon-eap.com](http://www.marathon-eap.com)

2323 E Capitol Dr  
Appleton, WI 54911-8731  
Phone: (920) 954-2000  
FAX: (920) 954-2020  
E-mail: [marathon.appleton@marathon-eap.com](mailto:marathon.appleton@marathon-eap.com)  
Contact: Jack L. Fischer, AIA

Marathon Engineers/Architects/Planners, LLC, is a member of the Jaakko Poyry Group. Professional services include architectural, interior and graphic design; structural, process, civil, plumbing, electrical and HVAC engineering; energy conservation audits; retrofit of existing mechanical systems; cost estimating; construction management; feasibility studies; environmental assessments; rehabilitation and reuse studies; chemical recovery; process control instrumentation; CADD/CAE and computerized cost accounting and scheduling programs utilized.



**Martenson & Eisele, Inc.**

WEB page: [www.martenson-eisele.com](http://www.martenson-eisele.com)

1377 Midway Rd  
Menasha, WI 54952-0449  
Phone: (920) 731-0381  
FAX: (920) 733-8578  
E-mail: [jonb@martenson-eisele.com](mailto:jonb@martenson-eisele.com)  
Contact: Jonathan Bartz

Established in 1977, Martenson & Eisele, Inc. is a full-service planning, surveying, engineering and architectural firm with offices in Menasha and Omro, Wisconsin. Planning services include comprehensive plans, land development planning & design, tax increment districts & financing, park and open space planning & design, grant writing and administration. Surveying services include subdivisions, and certified survey maps. Conventional & GPS surveying, ALTA & property surveys, topographic surveys and construction staking. Engineering services include water, sanitary & storm water, street & highway studies and design, site design, street & sewer maintenance programs and construction inspection.

**Mautz Paint Co.**

WEB page: [www.mautzpaint.com](http://www.mautzpaint.com)

762 Lois Dr  
Sun Prairie, WI 53590-1100  
Phone: (608) 825-1489  
FAX: (608) 834-4200  
E-mail: [ccbob1@msn.com](mailto:ccbob1@msn.com)  
Contact: Bob Carlson

Manufacturers of fine quality paint since 1922.

**MCSi/Midwest**

WEB page: [www.mcsinet.com](http://www.mcsinet.com)

5300 S Emmer Dr  
New Berlin, WI 53151-7365  
Phone: (262) 207-1341  
FAX: (262) 207-1301  
E-mail: [flint.bridge@mcsinet.com](mailto:flint.bridge@mcsinet.com)  
Contact: Flint Bridge

MCSi (formerly Midwest Visual Communications and Video Images) is a leading systems integrator and provider of presentation systems for corporate boardrooms, training centers, University lecture halls, distance learning rooms and videoconferencing rooms. We provide video broadcast systems, data conferencing solutions and video streaming technologies. MCSi employs full-time design engineers, CAD technicians, installation technicians, project managers and service personnel. We can take a project from its initial planning phase to design/build, to final training. MCSi is an AIA/CES registered provider of iPresentation Systems Design Consideration seminar that is available to architects/planners for AIA learning units. MCSi has over 30 offices throughout the U.S. and Canada.

**Mead and Hunt, Inc.**

WEB page: [www.meadhunt.com](http://www.meadhunt.com)

6501 Watts Rd  
Madison, WI 53719-2700  
Phone: (608) 273-6380  
FAX: (608) 273-6391  
E-mail: [paul.powers@meadhunt.com](mailto:paul.powers@meadhunt.com)  
Contact: Paul Powers, AIA, NCARB

Mead & Hunt is an employee-owned firm boasting approximately 270 architects, engineers, scientists, planners and support staff in offices nationwide. Since our founding in 1900, we have been serving clients in both the public and private sectors. Services include space programming, facility needs assessments, architectural/interior design, cost estimating, environmental studies and construction administration. In addition to our architectural and building engineering staff, we offer the services of historic preservation specialists and surveyors. Areas of project specialization include aviation and transportation, municipal services, public, commercial and industrial facilities and water resources and environmental services.

**Mid-States Concrete Products Co.**

WEB page: [www.midstatesconcrete.com](http://www.midstatesconcrete.com)

PO Box 58  
Beloit, WI 53512-0058  
Phone: (800) 236-1072  
FAX: (815) 389-2339  
E-mail: [midstates@midstatesconcrete.com](mailto:midstates@midstatesconcrete.com)

Mid-States Concrete Products Co., Beloit, Wisconsin, manufactures flexcore prestressed concrete slabs, precast concrete beams and columns, and other precast elements. Increased manufacturing capabilities now include 4' extruded Hollow Core. Planning and design support will provide technical assistance, construction details and fast quotes. Job site service will coordinate delivery and installation. Manufacturing to stringent PCI standards ensure quality products. Markets served are schools, condominiums, apartments and community living, hotels, office buildings, retail, residential, mezzanine and food industry.

**Mortenson, Matzelle & Meldrum, Inc.**

WEB page: [www.mmmmins.com](http://www.mmmmins.com)

3113 W Beltline Hwy  
Madison, WI 53708-8950  
Phone: (608) 273-0655  
FAX: (608) 273-1784  
E-mail: [mikem@mmmmins.com](mailto:mikem@mmmmins.com)  
Contact: Michael Moore

Mortenson, Matzelle & Meldrum, Inc., is a regional insurance brokerage firm placing insurance products in both the employee benefits and property/casualty areas. With offices in Madison, Milwaukee and Eau Claire, Mortenson, Matzelle & Meldrum, Inc., employs over 100 insurance professionals. Within its property/casualty division, Mortenson, Matzelle & Meldrum, Inc., has a professional liability unit. This highly trained and experienced group deals with the unique liability issues confronting the engineering and architectural professions. For information on any insurance needs, please contact Mr. Michael Moore at 800-272-2443 or visit Mortenson, Matzelle & Meldrum, Inc., on the web at [www.mmmmins.com](http://www.mmmmins.com).

**National Survey & Engineering**

WEB page: [www.nsae.com](http://www.nsae.com)

16745 N Bluemound Rd Ste 200  
Brookfield, WI 53005-5938  
Phone: (262) 781-1000  
FAX: (262) 781-8466  
E-mail: [tom.puddicombe@nsae.com](mailto:tom.puddicombe@nsae.com)  
Contact: Tom Puddicombe, PE

2850 Universal St  
Oshkosh, WI 54904-8975  
Phone: (920) 231-3119  
Fax: (920) 231-9872  
Email: [paul.phillips@rasmith.com](mailto:paul.phillips@rasmith.com)  
Contact: Paul Phillips, PE

National Survey & Engineering, a division of R.A. Smith & Associates, serves the land development industry and operates the largest land surveying organization in Wisconsin. A staff of 80 work for clients that are household names on projects across the country and locally, including regional and neighborhood malls, big box retail, business/industrial sites, health care facilities, restaurants, schools, churches, libraries and more. Services include site engineering, feasibility studies, site planning, surveying/GPS (global positioning system), GIS and 3-D animation and visualization production for the private development sector. National Survey & Engineering is located in Brookfield, Wisconsin and has been in business since 1929.

**Orion Energy Systems**

WEB page: [www.oriones.com](http://www.oriones.com)

1204 Pilgrim Rd  
Plymouth, WI 53073  
Phone: (920) 892-9340  
FAX: (920) 892-9350  
E-mail: [mkirton@orionlighting.com](mailto:mkirton@orionlighting.com)  
Contact: Margaret Kirton

Orion Energy Systems offers a true one-for-one replacement of HID fixtures with UL listed and patented energy efficient modular fixtures and accessories. We provide substantial energy savings while increasing the quantity and quality of light to the manufacturing, distribution center, commercial, school and gymnasium markets. Among Orion's customers are Quad/Graphics, Oshkosh Truck, Menasha, Caterpillar, Kohlí's, Rockwell Automation, Simplicity, Toro, UPS and Bemis Mfg. Recognition includes Wisconsin Manufacturer of the Year grand award, emerging category, Wisconsin Business Friend of the Environment and participation as a success story at the Governor's Summit on Capital in 2002. We offer energy savings without compromise!



**Oscar J. Boldt Construction**WEB page: [www.boldtconstruction.com](http://www.boldtconstruction.com)

PO Box 419  
 Appleton, WI 54912-0419  
 Phone: (920) 739-6321  
 FAX: (920) 739-4409  
 E-mail: [info@boldt.com](mailto:info@boldt.com)  
 Contact: Daren Mazier

740 Regent St Ste 202  
 Madison, WI 53715  
 Phone: (608) 257-2430  
 Fax: (608) 257-2478  
 Contact: Eric Russell

N21W23340 Ridgeview Pky  
 Waukesha, WI 53188  
 Phone: (262) 544-9118  
 Fax: (262) 544-5905  
 Contact: Eric Russell

2901 Business Park Dr  
 Stevens Point, WI 54481  
 Phone: (715) 295-3400  
 Fax: (715) 295-3401  
 Contact: Troy Torgerson

Founded in 1889, Oscar J. Boldt Construction is a fourth generation, family-owned firm. Operating throughout the United States with a workforce of more than 2,000, we provide project development, design and construction-related services to customers in a variety of healthcare, power, industrial, education, pulp and paper, food and beverage, correctional, religious, recreational, commercial, aviation and automotive construction markets. Oscar J. Boldt Construction is Wisconsin's largest, and among the top-ranked general contractors in the nation.

**Paragon Design Group LLC**WEB page: [www.paragondg.com](http://www.paragondg.com)

2776 N Sholes Ave  
 Milwaukee, WI 53210  
 Phone: (414) 449-1555  
 FAX: (414) 449-2425  
 E-mail: [designteam@paragondg.com](mailto:designteam@paragondg.com)  
 Contact: Scott Johnson

Paragon Design Group, LLC, is a professional design firm specializing in site design, landscape architecture and planning services. Working with many of Wisconsin's finest architects, developers and communities, we have completed a range of projects including education, religious, civic centers, justice, fire stations, medical, senior housing, retail, corporate, commercial, industrial, urban infill, athletic complexes, parks and residential. Our unique scope of services include site analysis and programming, site planning, site demolition, layout, grading, storm water management, erosion control, site utilities and landscape design. Our holistic approach produces projects that meet the needs of our clients, the community and the environment.

**Pierce Engineers Inc.**WEB page: [www.pierceengineers.com](http://www.pierceengineers.com)

241 N Broadway Ste 203  
 Milwaukee, WI 53202  
 Phone: (414) 278-6060  
 FAX: (414) 278-6061  
 E-mail: [pe@pierceengineers.com](mailto:pe@pierceengineers.com)  
 Contact: Richard C. Pierce

210 N Bassett St Ste 110  
 Madison, WI 53705  
 Phone: (608) 256-7304  
 Fax: (608) 256-7306  
 Email: [jcsorci@pierceengineers.com](mailto:jcsorci@pierceengineers.com)  
 Contact: Jason C. Sorci

Pierce Engineers, Inc. is (PE) staff of professionals provides structural engineering consulting services for a variety of project types, including industrial, office, retail, hospitality, education, health care, parking ramps, institutional, ecumenical and historic renovation projects. The firm specializes in designs with structural steel, masonry, timber, post-tensioned, conventionally reinforced and precast concrete systems. PE's staff practices nationally and has professional registrations in 23 states and Washington D.C. The technical expertise offered by PE's staff leads to innovative designs and construction techniques while maintaining simplicity through engineering ingenuity. Knowledge and experience results in highly imaginative and creative approaches to architectural and engineering problem resolution.

**PLANNING Design Build Inc.**WEB page: [www.planningdesignbuild.com](http://www.planningdesignbuild.com)

9801 Deming Wy Ste 102  
 Madison, WI 53717  
 Phone: (608) 836-8055  
 FAX: (608) 836-5818  
 E-mail: [kenpien@planningdesignbuild.com](mailto:kenpien@planningdesignbuild.com)  
 Contact: Ken Pientka, COO

PLANNING Design Build, Inc. is an architecturally led design-build firm. We are a regional leader in the design and construction of commercial office buildings, retail centers and indoor water park resorts. Our in-house architects, engineers and construction teams collaborate to create the most efficient and cost effective building possible. On each project, we utilize our own Integrated Planning Process to ensure that we meet every project goal. This process makes the building process easy for our clients and delivers a functional, cost effective, high quality project in an efficient time frame.

**Poblocki & Sons, LLC**WEB page: [www.poblocki.com](http://www.poblocki.com)

922 S 70th St  
 Milwaukee, WI 53214  
 Phone: (414) 453-4010  
 FAX: (414) 453-3070  
 E-mail: [mwp@poblocki.com](mailto:mwp@poblocki.com)  
 Contact: Mark Poblocki

As a manufacturer of exterior and interior signage since 1932, Poblocki & Sons is a leader in the architectural sign industry and one of the largest custom sign fabricators in the United States. Located in a 110,000 square-foot, state-of-the-art facility in Milwaukee, Poblocki & Sons is a full-service designer, manufacturer and installer of custom exterior and interior systems for the healthcare, educational, retail and corporate markets. Poblocki & Sons' customer base includes Target, Dayton Hudson, Miller Brewing Company, Disney, Midwest Express, Rockwell, Marshfield Clinics and United Parcel Service, in addition to school districts, sports facilities, libraries, museums and medical centers throughout the U.S.

**Porter Athletic Equipment Co.**WEB page: [www.porter-ath.com](http://www.porter-ath.com)

N6902 Donlin Dr  
 Pardeeville, WI 53954  
 Phone: (608) 742-2411  
 FAX: (608) 742-6101  
 E-mail: [dwinkelmann@porter-ath.com](mailto:dwinkelmann@porter-ath.com)  
 Contact: Doug Winkelmann

2500 S 25th Ave  
 Broadview, IL 60155  
 Phone: (708) 338-2000  
 Fax: (708) 338-2060  
 e-mail: [jcorbett@porter-ath.com](mailto:jcorbett@porter-ath.com)  
 Contact: Joe Corbett

**Potter Lawson, Inc.**WEB page: [www.potterlawson.com](http://www.potterlawson.com)

15 Ellis Potter Ct  
 Madison, WI 53711-2456  
 Phone: (608) 274-2741  
 FAX: (608) 274-3674  
 E-mail: [info@potterlawson.com](mailto:info@potterlawson.com)  
 Contact: Beth A. Prochaska

Potter Lawson is the proud recipient of the 2002 AIA Wisconsin Architecture Firm Award. We have built a reputation for excellence by consistently providing quality design services to our clients. Our projects strive to exceed our clients' expectations by combining the owner's goals with economic and functional considerations to create projects of lasting value. While we specialize in educational, high-tech and corporate projects, our practice is diversified. We offer a full menu of services including facilities planning, master planning, programming and space planning, as well as award-winning architecture, engineering and interior design.



**Quikrete® Wisconsin Inc.**

WEB page: [www.quikrete.com](http://www.quikrete.com)

W225N6236 Village Dr  
Sussex, WI 53089  
Phone: (800) 657-0789  
FAX: (262) 246-4849  
E-mail: [rgreenwood@quikrete.com](mailto:rgreenwood@quikrete.com)  
Contact: Roy Greenwood

Spec Mixr Producer

**R.L. Merlie Construction Co.**

WEB page: [www.rlmerlie.com](http://www.rlmerlie.com)

Rt 2 Box 110 B  
Spring Green, WI 53588-9221  
Phone: (608) 588-2851  
FAX: (608) 588-9181  
E-mail: [rich@rlmerlie.com](mailto:rich@rlmerlie.com)  
Contact: Richard Merlie

**Resource Staffing Consultants**

WEB page: [www.rscqp.com](http://www.rscqp.com)

PO Box 207  
Suamico, WI 54173-0207  
Phone: (920) 822-1772  
FAX: (920) 822-1329  
E-mail: [tward@rscqp.com](mailto:tward@rscqp.com)  
Contact: Thomas Ward

Resource Staffing Consultants specializes in delivering search services to architectural consulting firms. The firm offers 20 years of experience in conducting successful trained and contingency searches for architects including principals, project managers, planners, project architects and specification professionals. Our client references include some of the best architectural practices in the nation and here in Wisconsin. Please call us or visit our Web site for information about how we can help you find key staff for your firm.

**Roofing Consultants Ltd.**

WEB page: [www.roofingconsultants.com](http://www.roofingconsultants.com)

PO Box 1305  
Waukesha, WI 53189-1305  
Phone: (800) 549-0802  
FAX: (800) 549-0776  
E-mail: [fcarb@execpc.com](mailto:fcarb@execpc.com)  
Contact: Frank Balistreri, AIA

Since 1976 Roofing Consultants Ltd. Has been providing forensic architectural engineering services for school districts, real estate trusts, shopping center developers, real estate management companies, institutional building owners and casualty insurance companies. Our consultants are either registered architects or professional engineers who have hands-on experience with roofing and building envelope design, problem solving or forensics. We are licensed in 14 states to provide architecture or engineering services.

**Russell Knetzger, AICP**

2625 E Shorewood Blvd  
Shorewood, WI 53211-2457  
Phone: (414) 962-5108  
FAX: (414) 962-0671  
E-mail: [rknetzger@execpc.com](mailto:rknetzger@execpc.com)

Contact: Russell H. Knetzger

City and town plan consultant, including subdivision design, highway access issues, interpretation of community and environmental plans, assistance and advice in processing zoning petitions, plats and conditional uses or site plan approvals through zoning authorities. Expert witness in these matters and in negotiating boundary agreements between towns and cities/villages.

**Schreiber/Anderson Associates**

WEB page: [www.saa-madison.com](http://www.saa-madison.com)

1435 E Main St  
Madison, WI 53703-3024  
Phone: (608) 255-0800  
FAX: (608) 255-7750  
E-mail: [saa@saa-madison.com](mailto:saa@saa-madison.com)  
Contact: David Schreiber

Schreiber/Anderson Associates (SAA) is multidisciplinary firm of landscape architects, urban planners, designers and civil engineers offering comprehensive services to public and private clients. Founded in 1984, SAA has particular expertise in residential and mixed-use land development, site master planning, park planning and design, native landscape restoration and landscape design and maintenance plans for corporate, commercial, industrial, health/elder care and institutional projects. SAA also provides plan approvals, traffic analysis, site construction plans, construction documents, street and utility design, GIS mapping and storm water management.

**Schuler & Shook Inc.**

WEB page: [www.schulershook.com](http://www.schulershook.com)

750 N Orleans Ste 400  
Chicago, IL 60610  
Phone: (312) 944-8230  
FAX: (312) 944-8297  
E-mail: [chicago@schulershook.com](mailto:chicago@schulershook.com)  
Contact: Robert Shook

123 3rd St N Ste 210  
Minneapolis, MN 55401  
Phone: (612) 339-5958  
Fax: (612) 337-5097  
Email: [mdibiasi@schulershook.com](mailto:mdibiasi@schulershook.com)  
Contact: Michael DiBlasi

1215 San Marcos  
Arlington, TX 76012  
Phone: (817) 461-5442  
Fax: (817) 274-4741  
Email: [dfw@schulershook.com](mailto:dfw@schulershook.com)  
Contact: Jack Hagler

Architectural lighting design and theater consulting. Schuler & Shook collaborates with the design team to create innovative lighting design solutions that enhance architectural designs. We provide theater consulting and planning services, offering a full range of design and specifications services.

**Scott McNeill Enterprises LLC**

WEB page: [www.scottsblock.com](http://www.scottsblock.com)

704 Russell St  
DeForest, WI 53532  
Phone: (608) 358-2528  
FAX: (608) 846-5647  
E-mail: [sesch12345@aol.com](mailto:sesch12345@aol.com)  
Contact: Scott McNeill

Contractor/distributor/consultant for insulating wall forms of all types (Arxxr, Rewardr, Logixr, etc.) for residential or commercial applications. Experience installing ICF products since 1995. Scott McNeill Enterprises is certified by major manufacturers on the installation techniques and has partnered with quality Redi-Mix suppliers and pump services in South Central Wisconsin. We exhibited at the 2002 AIA Wisconsin Building Products Expo. Our services include conducting seminars on: block types, installation techniques, discussion of code requirements, cost estimating service, familiarizing clients with high R-value concrete wall construction benefits (thermal mass) and water control/radon systems. Certified installer. Visit our Web site at [www.scottsblock.com](http://www.scottsblock.com)

**SmithGroup JJR LLC**

WEB page: [www.smithgroupjjr.com](http://www.smithgroupjjr.com)

625 Williamston St  
Madison, WI 53703  
Phone: (608) 251-1177  
FAX: (608) 251-6147  
E-mail: [eduard.freer@smithgroup.com](mailto:eduard.freer@smithgroup.com)  
Contact: Ed Freer, ASLA

SmithGroup JJR provides land planning, development approval services, landscape architecture and engineering services to public and private sector clients throughout the nation. SmithGroup JJR's staff has worked jointly with the leading architectural firms in Wisconsin and adjoining states. Many of SmithGroup JJR's planning and design projects have won national and regional awards for design excellence. SmithGroup JJR's multidisciplinary staff includes landscape architects, urban planners, public involvement specialists, urban designers, civil engineers and environmental scientists. Midwest office locations include Madison, Chicago and Ann Arbor.

**Soil Structure Interface Consultants**

WEB page: [www.soilstructure.com](http://www.soilstructure.com)

2310 Daniels St Ste 120  
Madison, WI 53718  
Phone: (608) 224-1504  
FAX: (608) 224-1604  
E-mail: [lee@soilstructure.com](mailto:lee@soilstructure.com)  
Contact: Liiban Affi, PE

Soil Structure excels in geotechnical drilling and reports. In addition, we can help you with footing inspections, earthwork monitoring and compaction testing. Soil Structure offers you fast service, judgment through experience and detailed, plain language soil reports.



**Soils & Engineering Services, Inc.**

WEB page: [www.soils.ws](http://www.soils.ws)

1102 Stewart St  
Madison, WI 53713-4648  
Phone: (608) 274-7600  
FAX: (608) 274-7511  
E-mail: [soils@soils.ws](mailto:soils@soils.ws)  
Contact: Octavio Tejada, P.E.

Soils & Engineering Services, Inc., provides geotechnical and environmental engineering, materials testing, and geotechnical and environmental drilling and sampling throughout Wisconsin, northern Illinois, and eastern Iowa. Our drilling fleet is used for drilling with hollow-stem augers, solid stem augers, mud and air rotary methods, bedrock, and bedrock coring. Our laboratory is AASHTO-accredited for testing of hot-mix asphalt, aggregate, and Portland cement concrete, and our technicians are certified through WDOT Highway Technician Certification Program. SES is registered as a Disadvantaged and a Minority Business Enterprise with various state, county and local governmental agencies.

**Somerville, Inc.**

WEB page: [www.somervilleinc.com](http://www.somervilleinc.com)

2100 Riverside Dr  
Green Bay, WI 54301-2390  
Phone: (920) 437-8136  
FAX: (920) 437-1131  
E-mail: [jsomerville@somervilleinc.com](mailto:jsomerville@somervilleinc.com)  
Contact: Jack Somerville, AIA, NCARB

Somerville, Inc., offers a complete range of architecture and engineering services for the built environment. We have over 57 years of comprehensive experience to the Wisconsin community. Extensive experience on over 6,000 projects including commercial, industrial, retail, religious, educational, healthcare and municipal buildings. Our accomplished team of professionals provides clients with multi-disciplinary expertise through a single point of contact. We serve our clients from program development and space planning through construction documents and construction management and offer a unique design/build alternative approach called Somerville Single Source. Our expanded range of services includes feasibility studies, master planning and referendum support.

**Spancrete Industries, Inc.**

WEB page: [www.spancrete.com](http://www.spancrete.com)

N16W23415 Stoneridge Dr  
Waukesha, WI 53188-0828  
Phone: (414) 290-9000  
FAX: (414) 290-9125  
E-mail: [info@spancrete.com](mailto:info@spancrete.com)  
Contact: Greg Holewinski

Spancrete Industries, Inc., headquartered in Waukesha, Wisconsin, is a producer of structural and architectural precast concrete products and serves the Midwest region. Spancrete provides quality concrete products including prestressed, precast hollowcore plank and wall panels, concrete beams, columns, tees, bridge girders, sound walls, customized form cast products and offers full design/build service. With production facilities in Waukesha, Valders and Green Bay, Wisconsin and Crystal Lake, Illinois, this 57-year company has helped thousands of companies build and expand their facilities. Spancrete's commitment to quality, service and durability has led to the growth of its own company as well as the companies it serves.

**Strang, Inc.**

WEB page: [www.strang-inc.com](http://www.strang-inc.com)

6411 Mineral Point Rd  
Madison, WI 53705-4395  
Phone: (608) 276-9200  
FAX: (608) 276-9204  
E-mail: [information@strang-inc.com](mailto:information@strang-inc.com)  
Contact: Ann E. Leahy

Founded in 1935, Strang, Inc. is an architectural, engineering and interior design firm specializing in research and development, corporate office, higher education and telecommunications facilities. In addition to HVAC, electrical and plumbing design, our engineering services include building communications and security systems, energy analysis and management studies, safety and fire protection, maintenance programs, site engineering, mechanical systems analysis, cost estimating, and start up assistance. Strang's interior designers specialize in creating interior spaces that support our clients' strategic goals, reflect their corporate image and provide flexibility to accommodate growth. Services include interior design, space planning and utilization studies, programming, furniture selection/procurement, cost estimating/bidding, identification of corporate space standards and facility management.

**Strass-Maguire & Associates, Inc.**

WEB page: [www.strass-maguire.com](http://www.strass-maguire.com)

9064 N Deerbrook Trl  
Milwaukee, WI 53223  
Phone: (414) 354-4046  
FAX: (414) 354-5008  
E-mail: [lavern@strassmaguire.com](mailto:lavern@strassmaguire.com)  
Contact: Lavern L. Nall, PE

Strass-Maguire & Associates, Inc., was founded in 1939 and has become a leader in its field of structural and civil engineering. We provide services in structural and civil engineering design and analysis; architectural and structural specification; design and shop drawing presentation; structural inspections; contract administration; planning services and peer reviews. Strass-Maguire's vast project portfolio includes commercial buildings, hospitals, industrial facilities, high-rise dormitories, schools, government facilities, curtain walls, bridges and specialty structures.

**STS Consultants, Ltd.**

WEB page: [www.stsconsultants.com](http://www.stsconsultants.com)

11425 W Lake Park Dr  
Milwaukee, WI 53224-3025  
Phone: (414) 359-3030  
FAX: (414) 359-0822  
E-mail: [harris@stsconsultants.com](mailto:harris@stsconsultants.com)  
Contact: Peter Harris

1035 Kepler Dr  
Green Bay, WI 54311  
Phone: (920) 468-1978  
Fax: (920) 468-3312  
e-mail: [newhouse@stsconsultants.com](mailto:newhouse@stsconsultants.com)  
Contact: Bill Newhouse

558 N Main St  
Oshkosh, WI 54901-4925  
Phone: (920) 235-0270  
Fax: (920) 235-0321

2901 W Beltline Hwy Ste 123  
Madison, WI 53713-4231  
Phone: (608) 273-3131  
Fax: (608) 273-3324  
e-mail: [inman@stsconsultants.com](mailto:inman@stsconsultants.com)  
Contact: Andy Inman, PE

3909 Concord Ave  
Schofield, WI 54476-6208  
Phone: (715) 355-4304  
Fax: (715) 355-4513

STS Consultants is a 500 person consulting firm providing engineering design and environmental management in commercial, industrial and municipal markets. For over 50 years, STS has specialized in the entire site development process from the earliest pre-planning and site evaluation phases, to the civil design and final construction. Architects and developers rely on us to provide expertise in civil engineering, soil testing, geotechnical evaluations, environmental site assessments, grading/paving, materials inspection/testing or construction oversight. STS excels at providing a single integrated team to support you and your clients from start to finish on any site development project.



**Superior Entrance Systems, Inc.**WEB page: [www.besam.com](http://www.besam.com)

911 Ogden Ave  
 Superior, WI 54880  
 Phone: (888) 283-0314  
 FAX: (715) 394-5580  
 E-mail: [ses@chartermi.net](mailto:ses@chartermi.net)  
 Contact: David D. Olson, CSI

**The Kubala Washatko Architects Inc.**WEB page: [www.tkwa.com](http://www.tkwa.com)

W61N617 Mequon Ave  
 Cedarburg, WI 53012-2017  
 Phone: (262) 377-6039  
 FAX: (262) 377-2954  
 E-mail: [wreckard@tkwa.com](mailto:wreckard@tkwa.com)  
 Contact: Wayne Reckard

Since 1980, The Kubala Washatko Architects, Inc., the architects of choice when design matters, have offered a wide range of planning, architectural and interior design services to a regional and national clientele. We are committed to designing buildings that connect with our hearts and support our need for a healthier, more meaningful life. Our designs are not style-based; we respond to the unique needs of our clients and specific conditions of each site. Our award-winning work includes but is not limited to commercial/retail centers, museums, offices, performing arts centers and religious facilities. Special areas of expertise include sustainable design, historic preservation and adaptive reuse.

**Thomas Steele, a division of Trilary Inc.**WEB page: [www.thomas-steele.com](http://www.thomas-steele.com)

2700 Laura Ln  
 Middleton, WI 53562  
 Phone: (800) 241-2505  
 FAX: (608) 831-7623  
 E-mail: [sales@thomas-steele.com](mailto:sales@thomas-steele.com)  
 Contact: Vicki Carbajal

**Town & Country Electric**WEB page: [www.faith-technologies.com](http://www.faith-technologies.com)

2662 American Dr  
 Appleton, WI 54914  
 Phone: (920) 738-1500  
 FAX: (920) 738-8988  
 E-mail: [bob.stephenson@faith-technologies.com](mailto:bob.stephenson@faith-technologies.com)  
 Contact: Bob Stephenson

Town & Country Electric, a division of Faith Technologies, Inc., is the largest full-service electrical contractor in the Midwest. We have 13 full-service branch offices throughout the Midwest. Capabilities include commercial, industrial and residential, bridges, locks, dams and water treatment plants, network services, telephone systems, data communications, fiber optics, building systems (fire alarms, paging, security), instrumentation and controls, preventative maintenance (Elite Service Plan), retrofitting for energy efficiency, complete design and installation services, lighting design and installation, power generation and distribution.

**Vierbicher Associates, Inc.**WEB page: [www.vierbicher.com](http://www.vierbicher.com)

999 Fourier Dr Ste 201  
 Madison, WI 53717  
 Phone: (608) 826-0532  
 FAX: (608) 826-0530  
 E-mail: [pcut@vierbicher.com](mailto:pcut@vierbicher.com)  
 Contact: Paul Cuta, AIA

400 Viking Dr  
 Reedsburg, WI 53959  
 Phone: (608) 524-6468  
 Fax: (608) 524-8218  
 email: [jasl@vierbicher.com](mailto:jasl@vierbicher.com)  
 Contact: Jan Aslaksan, AIA

1521 Metro Dr Ste 205  
 Schofield, WI 54476-0650  
 Phone: (715) 359-2003  
 Fax: (715) 359-4753  
 email: [zbas@vierbicher.com](mailto:zbas@vierbicher.com)  
 Contact: Zahid Bashir, PE

Founded in 1976, Vierbicher Associates, Inc. is an architecture, engineering, planning and community development, surveying/GIS, environmental and water resources firm. Projects include a wide variety of building types including municipal buildings, libraries, police and fire stations, commercial/retail, restaurants, courthouse facilities, offices, multi-family housing, industrial facilities and ADA assessments. Recent projects include Kenosha Safety and Weight Enforcement Facility, Minocqua Police Station, Weston Safety Building, Oregon Municipal Building, Oregon Area Fire/EMS Expansion, Mount Horeb Library, Marshall Safety Building, Wisconsin Rapids Senior Resource Center, Mueller memorial Terrace and Wisconsin Dells River Walk.

**Water Technology Inc.**WEB page: [www.watertechnologyinc.com](http://www.watertechnologyinc.com)

100 Park Ave  
 Beaver Dam, WI 53916  
 Phone: (920) 887-7375  
 FAX: (920) 887-8850  
 E-mail: [rscott@watertechnologyinc.com](mailto:rscott@watertechnologyinc.com)  
 Contact: Richard C. Scott, AIA

Water Technology is a 37 person firm that designs swimming pools of all types as a consultant to architects. We have special expertise in competitive pools, indoor and outdoor leisure pools, therapy pools, waterparks, hotel and resort pools, spraygrounds, whirlpools and special use pools. Our in house disciplines include 3 architects, 2 engineers, 3 landscape architects, 2 recreation professionals, 2 construction professionals, theming specialists and an outstanding support staff. We have built the finest aquatics firm in the country right here in Wisconsin, even though we work nationally and internationally. Founded in 1983, we have designed over 350 aquatics projects.

**Whyte Hirschboeck Dudek S.C.**WEB page: [www.whdlaw.com](http://www.whdlaw.com)

1 E Main St Ste 300  
 Madison, WI 53703-3300  
 Phone: (608) 255-4440  
 FAX: (608) 258-7138  
 E-mail: [tpyper@whdlaw.com](mailto:tpyper@whdlaw.com)  
 Contact: Thomas M. Pyper

Whyte Hirschboeck Dudek S.C. is a full-service law firm with more than 100 attorneys in Milwaukee, Madison, Manitowoc and Menomonee Falls, Wisconsin. WHD's Construction Group has more than 150 years of collective experience representing design and construction professionals. We are experienced in projects of all sizes and complexity, ranging from atomic power and wastewater treatment plants to single family homes, shopping centers, apartment projects, office buildings and public and industrial facilities. We provide government relations services and mediate, arbitrate and try disputes for our clients in Wisconsin and other state and federal courts.



**Institute!**

**2004 AIA WISCONSIN  
 CONVENTION & EXPO  
 APRIL 28 & 29, 2004  
 MONONA TERRACE  
 MADISON WISCONSIN**



By John Luke

A marketing portfolio is an important part of attracting future business. The photography should convey the same precision that you have given to the design of your building.

### QUALITY PHOTOGRAPHY

As the designer, you are familiar with the project's subtle nuances; but, the viewer of the photo is seeing it for the very first time, and that photo needs to create the very best first impression. The quality of the photography needs to be similar to what we see in *Architectural Record* to reflect your status as a credible professional with keen attention to detail.

Proper use of quality equipment eliminates undesirable effects. Converging verticals occurs when a camera is tilted up to fit buildings in the frame. Lenses from non-professional cameras are prone to other perspective deficiencies and distortions as well, such as barreling, pincushioning and chromatic aberration. Qualified photographers are aware of these issues and can avoid them. Accurate depiction of your design is critical.

### DIGITAL PHOTOGRAPHY

The cutting edge is now digital capture. The delivered file is a first generation original, not a second generation as in a scan; nor even a third generation as in a scanned print. The proper use of the right digital equipment can make a good photographer more efficient. It is quite expensive to set up a digital environment capable of producing high quality photos for reproduction, complete with camera, workstation, software and the peripherals. The investment can run from \$25K to \$50K. Add to that, the constant barrage of upgrades.

Digital cameras still require the usual and customary details in front of the lens to tend to such things as correct time of day, site preparation, proper handling of the complexities of mixed interior lighting and creating proper digital files. These issues are handled successfully by photographers who stay current with the right techniques to allow the photo to print properly at the press, and, hence, doing honor to your work.

### DIGITAL DELIVERY

Digital delivery has become the standard.

To reproduce an image on an 8½" x 11" cover, the image size at the required 200 to 300ppi is roughly 15MB in size. If your camera or scanner cannot generate a native file that large, simply re-sizing it up doesn't always work. The resulting final image often looks pixelated.

The quality of the file also is just as important as the size of the file. A JPEG (Joint Photographers Expert Group) is a compressed format. Each time a JPEG is edited and saved, data is lost, resulting in image degradation.

Files saved as JPEGs are best suited for making personal prints at the corner lab, e-mailing to people whose only use it to view it on a monitor, or to place it on a web site at the size it was saved out as. And, thumbnail sized images from the camera's image management and archiving software are too small for quality reproduction.

A proper master file sent out for reproduction is best sent out as an RGB uncompressed TIFF file (Tagged Image File Format), PC byte order, which is a true crossplatform format and contains all the original data.

Files delivered to magazines and printers on a CD is standard practice. In order for all computer devices in the chain to be speaking the same color language, each party needs to observe standards set up by the ICC (International Color Consortium). A digital imaging professional will operate an ICC compliant work flow. Each device, including monitors, printers, and, in some cases, cameras, need to be calibrated with an ICC profile so the next device down the chain can interpret the colors and image density the way it was originally rendered.

Other issues to be aware of are unsharp masking and file sizing techniques, interpreting histogram data and setting white and black points. When and how to implement these steps is equally important to the quality of the printed image.

**The cutting  
edge is  
now digital  
capture.**



## PLANNING

Quality photos are the result of careful planning and usually involve more than simply arriving at the site with a camera. Proper planning begins with a scouting trip where the photographer and the client can discuss specific views and scheduling logistics. The scouting trip also is a great time to meet with the building's representatives and discuss what they can expect. Their cooperation can make or break the assignment.

After the scouting, "housekeeping" details that need to be attended to prior to the photography can be reviewed. This includes items such as landscape maintenance, condition of windows and floors, missing light bulbs and minimizing general clutter. A professional photographer also can identify any distractions to your projects, such as utilities, miscellaneous signage, less than perfect natural elements, etc., that you may want to consider digitally correcting. This attention to detail and planning is the difference between a "snapshot" and a great photograph.

For out-of-town assignments where a pre-production tour is not possible, a discussion including blueprints or a building footprint helps identify all the necessary elements the client needs to have covered.

**Compare  
value,  
not cost.**

## Do YOUR HOMEWORK

Seek out a specialist in this technically demanding field. When reviewing the photographer's portfolio, evaluate the way they render perspective, proportion, balance of light and color.

Rather than comparing bottom line costs, compare value. Photographers who price too low may be underestimating what is necessary to produce the assignment to your satisfaction and may expose you to financial liability in the absence of proper releases from the buildings' owners.

The investment is minimized through cost sharing the expense with the general contractor or other associated parties. Maximize your marketing dollars and develop a relationship with a professional.

Comparative advantage in human resource terms, refers to spending one's time doing what one does best. I own bookkeeping software, but with the complexities of tax laws my accountant is paid to keep me in compliance. Professional photographers provide the quality you and your clients expect.

*EDITOR: The ASMP has two publications, "Commissioning Architectural Photography" and "Architectural Photography Checklist." These can be obtained through the ASMP at (215) 451-2767. John Luke is a professional photographer and owner of John Luke Photography. He specializes in architectural photography. Contributors to the article include ASMP and James Cavanaugh Photography.*

**LANG**  
Associates, Inc.

Wausau, WI (715) 845-1333 • Green Bay, WI (920) 468-6808 • Madison, WI (608) 238-3424  
Email: langwau@langassociates.net • Home Page: www.langassociates.net

Consulting Engineers • Electrical • Mechanical • Automation • Telecommunications

- Lighting
- Power Systems
- Telecommunications
- SCADA/Controls
- HVAC/Plumbing
- Testing & Troubleshooting

**MACKESEY AND ASSOCIATES, LLC**

6000 Gisholt Dr., Ste 200  
Phone: 608-270-1178

Madison, Wisconsin 53713  
Facsimile: 608-270-1192

SPECIALIZING IN THE DESIGN OF QUALITY FOODSERVICE  
AND LAUNDRY FACILITIES

**John  
Luke**  
Photography

**Architectural Photography**

1043 East Eldorado Street  
Appleton, Wisconsin 54911  
phone/fax 920.739.9361

view portfolio at:  
[www.johnlukephotography.com](http://www.johnlukephotography.com)

**SILVER™**  
*Edge*

Software Solutions for the  
Project Based Service Firm

[www.silveredge.com](http://www.silveredge.com)  
(800) 438-6860

**Wind2 FMS & Award! CRM**

*"Business Partnering for Life Enrichment"*



## GOLDEN AWARD

**Robert D. Cooper, AIA**, Greenfield, has been selected to receive the 2004 Golden Award.

The Golden Award is the highest honor AIA Wisconsin can bestow on one of its members. Its purpose is to recognize individual architects who have performed most distinguished leadership and service over an extended period of time, advanced the profession of architecture and provided inspiration to their fellow practitioners.

The AIA Wisconsin Board of Directors unanimously approved presenting the Golden Award to Cooper at its December meeting in Milwaukee. The nomination highlighted Cooper's significant contributions to the AIA and the profession of architecture, as well as his commitment to mentoring future leaders, serving his community and enhancing our built environment.

"Throughout his distinguished career, Bob Cooper has dedicated his time and talents to improve our profession and the quality of life in our communities," noted 2003 AIA Wisconsin President Thomas Cox, AIA, Appleton. "His record of service and leadership epitomizes the purpose for which the Golden Award was created."

Cooper is a principal in the public/education buildings studio of Eppstein Uhen Architects in Milwaukee. He served as the 1987 President of AIA Wisconsin, chaired the Design Awards Committee from 1990 through 1995 and was an officer of the Wisconsin Architects Foundation in 1990-1994. Examples of contributions to his community include serving as president of the library board and chairman of the city's economic development committee.

The Golden Award will be formally presented to Cooper on April 28 at the 2004 AIA Wisconsin Convention & Expo at Monona Terrace.

The AIA Wisconsin Golden Award was first presented in 1986. Previous Golden Award recipients include: David E. Lawson, FAIA; Paul H. Graven, FAIA; Mark A. Pfaller, FAIA; Wayne E. Spangler, FAIA; Leonard H. Reinke, FAIA; Nathaniel W. Sample, FAIA; Harry A. Schroeder, AIA; John P. Jacoby, FAIA; Noble E.

Rose, AIA; Douglas H. Smith, AIA; Gary V. Zimmerman, FAIA; James W. Miller, FAIA; George A.D. Schuett, FAIA; Roger D. Roslansky, AIA; Frederick E. Zimmermann, AIA; and Horst W. Lobe, AIA. Robert D. Cooper, AIA, is the seventeenth architect to receive the Golden Award.

## INSTITUTE!

An excellent program has been developed for the 2004 AIA Wisconsin Convention & Expo, *Institute!*, on April 28 & 29 at Monona Terrace in Madison. Please reserve the dates and plan to attend.

Award-winning architects Thom Mayne, AIA, of Morphosis in Santa Monica, and Merrill Elam, AIA, of Mack Scogin Merrill Elam Architects in Atlanta, will present the featured keynote sessions.

Professional development seminars will focus on emerging design, practice, technology and environmental issues. Special events include the presentation of the 2004 AIA Wisconsin Design Awards and Golden Award, as well as the popular Construction Industry Reception and WCMA Awards Breakfast.

The Building Products Expo will feature displays of the latest products and services available to Wisconsin's design and construction industry. Exhibitors also will be presenting valuable educational programs on new technology and research.

"This year's Convention & Expo is designed to fire up your creativity and launch your dreams," according to Convention chair Josh Johnson, AIA. Watch your mail for 2004 AIA Wisconsin Convention & Expo program information and registration materials.

## DIRECTORS-AT-LARGE

This fall, AIA Wisconsin members elected Henry Kosarzycki, AIA, Greendale, Patricia Frost, AIA, Whitefish Bay, and Louis Wasserman, AIA, Shorewood, as Directors-At-Large on the AIA Wisconsin Board of Directors. Their two-year terms began in January 2004.



Kosarzycki is the municipal agent monitor with the Wisconsin Department of Commerce, Division of Safety & Buildings. Frost is a founder and principal of PACE Architects. Wasserman is a principal of Louis Wasserman & Associates.

They join current Directors-At-Large Kent Calloway, AIA, Middleton, and Michael West, AIA, Fox Point.

### DISTINGUISHED SERVICE

The AIA Wisconsin Board of Directors has presented Lisa L. Kennedy, AIA, Whitefish Bay, with a *Citation for Distinguished Service* to the profession of architecture. This *Citation* recognized her leadership and vision as a Director on the national AIA Board of Directors.

Kennedy completed her three-year term representing AIA members in Wisconsin, Minnesota, North Dakota and South Dakota in December. She is the chair of the national AIA Convention on June 10-12 in Chicago.

### FALL WORKSHOP

The 2003 Fall Workshop offered a *Survival Guide for Architects*. The one-day workshop in Waukesha received a lot of positive feedback from the over 100 architects and allied professionals who participated.

One AIA Wisconsin member commented that it was the "most useful" Fall Workshop they had ever attended. The program featured nuts-and-bolts presentations on the legal aspects of managing a practice and copyright law by attorney Charles Heuer, FAIA, and on the essentials of starting and sustaining a firm and preparing for ownership transition by Peter Piven, FAIA.

The 2004 AIA Wisconsin Fall Workshop is scheduled for Friday, October 29, at The American Club in Kohler. Suggestions for workshop topics and speakers are encouraged.

### STATE CODE COUNCILS

The Secretary of the Department of Commerce has appointed Joseph Jurkiewicz, AIA, Grafton, and Charles Quagliana, AIA, Madison, to two important state code advisory councils.

Jurkiewicz is the AIA Wisconsin representative on the Commercial Building Code Council. He

replaces Warren Bauer, AIA, Madison, who served with distinction during the development of and transition to the new Wisconsin Commercial Building Code based on the International Building Code. Jurkiewicz also will serve as the chair of the AIA Wisconsin Safety & Buildings Liaison Committee, which provides a forum for members to discuss code issues with state officials.

Quagliana is representing AIA Wisconsin on the new Historic Building Code Advisory Council. This council was established to assist the Safety & Buildings Division update the state's historic building code. Quagliana is a former chair of the AIA Wisconsin Historic Resources Committee.

### ARCHITECTS ON WHEELS

Local architects and design professionals spent a day in a wheelchair as part of Tap the Potential, Disability Awareness month activities in October. The project was sponsored by AIA Southeast Wisconsin and a coalition of 45 disability-related agencies. The architects shared their experiences from their day in a wheelchair at a wine and cheese reception later that day.

The coalition targeted architects and related professionals due to their crucial role in designing accessible spaces. Making "universal design" principals central to planning is not only user friendly, but also can save the expense of retrofitting buildings after the fact. Universal design is defined as "the design of products and environments to be usable by all people, to the greatest extent possible, without the need for adaptation or specialized design." It benefits people of all ages and abilities.

"We are encouraging those who are participating not to limit this experience to their workplace, stated Don Natzke, executive director, Milwaukee County Office for Persons with Disabilities. "Venturing out into the community and participating in day-to-day activities will enrich this effort," Natzke said.

Members brave enough to accept the challenge were: James L. Fryk, AIA, Waukesha; Beth Dufek, Assoc. AIA, Milwaukee; Mark W. Knapp, AIA, Milwaukee; Renee A. Kubesh, AIA, Greenfield; Mark D. Lane, AIA, Mequon; d'Andre Willis, AIA, Shorewood; and Walter L. Wilson, AIA, Milwaukee.



**PEOPLE & PLACES**

**Henry F. Bahr, AIA**, Wauwatosa, and **Gary Davis**, Eau Claire, have been approved for Emeritus membership in The American Institute of Architects. Congratulations!

It is sad to report that **Robert J. Van Lanen, AIA**, died in 2003. A lifetime member of AIA Wisconsin, Van Lanen's firm was the recipient of several Design Awards. These award-winning buildings included an office building for the Milwaukee branch of Arthur Andersen & Co. (1963), The Lutheran Church-Missouri Synod on Capitol Drive, Milwaukee (1963), the Forest Home Branch Library (1967) and the North Milwaukee Library (1971). Published in *Wisconsin Architect* magazine through the 1950s, 60s and 70s, Von Grossmann, Burroughs & Van Lanen Architects designed numerous notable commercial and public buildings.

**Michael E. Whaley, AIA**, Oregon, has been named senior vice president of operations at Potter Lawson.

**Martin Sell, AIA**, Juneau, has joined The Horizon Group of Companies as chief operating officer.

At a State Building Commission meeting in December, Governor Jim Doyle announced the State Design and Construction Awards. The award for Excellence in Architectural Design went to Potter Lawson, Inc., for its design of the School of Pharmacy on the University of Wisconsin-Madison campus.

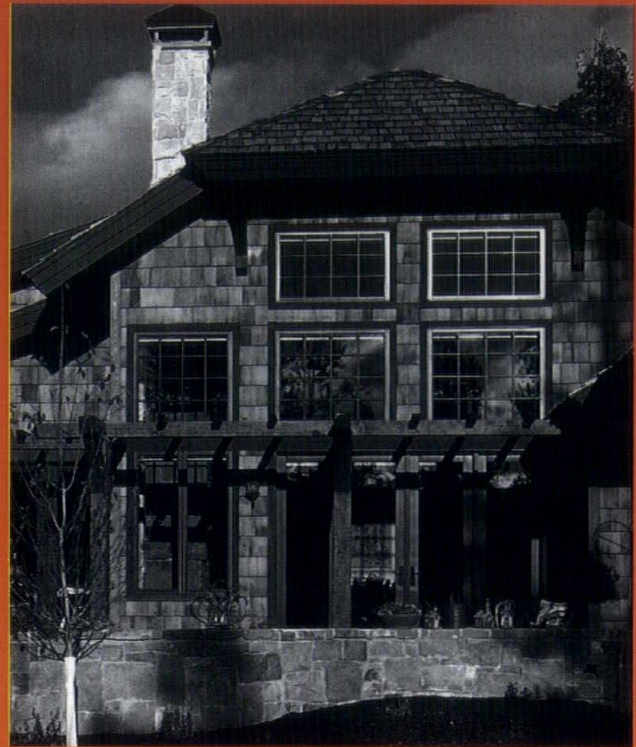
LaMuro Associates, Inc. has moved to 6 Milwaukee Ave. East, Ste. A, Fort Atkinson, WI 53538.

The mailing address of Meehan & Company, Inc., has changed to PO Box 925, Hales Corners, WI 53130-0925.

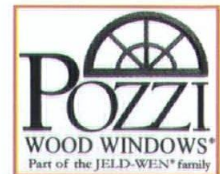
In the *Corporate Report* "2003 Workplaces of Distinction awards program, Eppstein Uhen Architects, Inc. and Flad & Associates received high marks in the six judged categories.

Continuum Architects & Planners, S.C., was inadvertently omitted from recently published projects Bradley Technology and Trade School and 3rd District Communications Operation Center as architect.

Copper  
Rosewood  
Champagne  
Clover Mist  
Bronze  
Scarlet  
Sea Foam  
Smoke  
Black Emerald  
Stainless



Choose carefully. Pozzi clad finishes are warranted for 20 years. Pozzi offers 12 standard colors, 21 designer choice colors, plus copper, stainless, and custom matches. See the possibilities at [www.pozzi.com/architects](http://www.pozzi.com/architects), then call our experts for the artistry your project deserves.

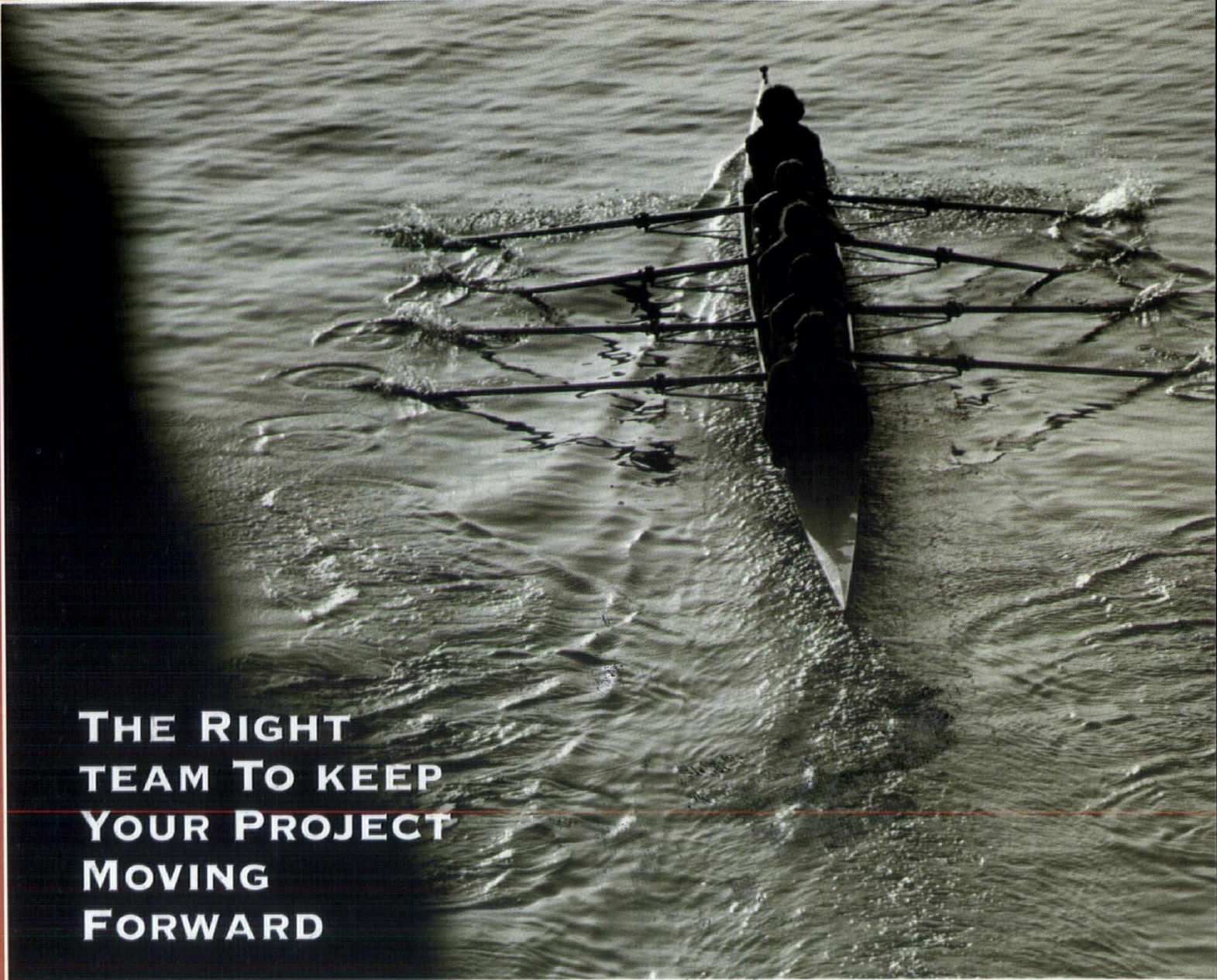


Window Design  
Center

World-class windows  
Home-town service

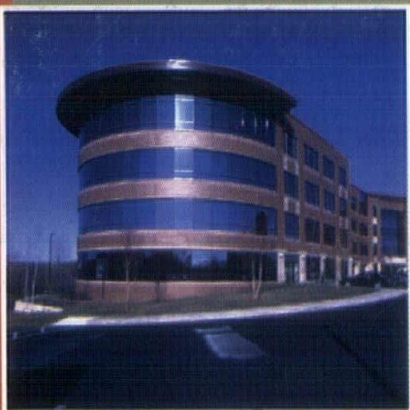
6524 Seybold Rd. Madison 271.8002  
800.887.8720 [www.windowcenter.com](http://www.windowcenter.com)





**THE RIGHT  
TEAM TO KEEP  
YOUR PROJECT  
MOVING  
FORWARD**

**THE EXHILARATION OF ACHIEVEMENT STARTS BY WORKING TOGETHER.**



You can count on all of us at MID-STATES to ensure superior precast/prestressed *flexicore* and **Hollow Core** floor and roof slabs, precast beams and columns when you need them. Our team of Salesmen, Project Designers, Engineers, Schedulers, Project Managers and Erectors will work closely with you, creating harmony throughout your project, while keeping a straight course towards your finish line.

Experience the "Team" Spirit of MID-STATES

*A family company providing precast building solutions.*



1-800-236-1072

[www.midstatesconcrete.com](http://www.midstatesconcrete.com)

500 S. Park Avenue  
South Beloit, Illinois 61080