

ALFA ROMEO CAMPIONARIO COLORI 1972



NOTE: Sequence: The scanned paint swatches are presented in the sequence they appear on the cross-reference sheets, except for Alfasud paints (listed last).

Accuracy: Please be aware that the colors are not accurate. The scanner is not calibrated, color profiles are not embedded, and your monitor/printer probably are not calibrated either. However, these scans give a rough idea about what these colors might look like.

Resolution and Size: The Paint swatches were scanned at 150 DPI. In order to keep the size of the scanned images under 100 KB, the pictures were cropped horizontally by 50%.

Names: The names are provided in the following languages and format: Italian / English / French / German. Although the cross-reference lists the colors on English, I chose to use the Italian name for the title because I think this minimizes confusion for looking up paint colors and compare it with information that may have been obtained from the historical archives.

Paint Codes: I added AR-xxx paint codes that I put together from other Alfa Romeo information. Some colors have multiple AR codes (same name, different number) that may stem from different models and different model years. Be aware that in some cases different colors were delivered under the same name or the same AR number

The color schemes or names of paint are provided in 4 languages, in the sequence they appear in the Color Chart:

- Italian ("I" = Italiano)
- English ("E" = English)
- French ("F" = Français)
- German ("D" = Deutsch)

The names of paint and color schemes are referred to by their Italian name because (a) that is what the Alfa Romeo Historical Archive usually provides, and (b) ambiguities and/or errors in translation are eliminated.

Some of the names were misspelled by Alfa Romeo. Where this was obvious, they were corrected and the original spelling was included in parentheses.

The 1972 Color Chart shows the exterior and interior color combinations for the following car models:

1. Coupe

- GT Junior 1.3-1.6
- Junior Zagato
- 2000 GT Veloce
- Montreal

2. Spider

- Spider Junior 1.3-1.6
- 2000 Spider Veloce

3. Berlina

- Alfasud
- Giulia Super
- Alfetta
- 2000 Berlina

The reference material presented here is extensive:

- 100+ pictures of the Color Chart book.
- Comments (by yours truly and hopefully many others) on how to read the Color Charts (and why not to trust them).
- Cross-reference matrices that show color combinations for specific models.
- Color swatches for exterior paint
- Color swatches for interior in cloth.
- Color swatches for interior in Texalfa (leatherette), leather and velvet.

Quick Links to Paint Colors:

- Biancospino / White / Blanc cassé / Weissdorn [click here](#)
- Grigio Indaco / Indigo Grey / Gris Indigo / Blaugrau [click here](#)
- Beige Cava / Quarry Beige / Beige Sable / Sandbeige [click here](#)
- Rosso Amaranto / Maroon / Rouge Amarante / Weinrot [click here](#)
- Blu Olandese / Dark Blue / Bleu Hollandais / Hollandblau [click here](#)
- Faggio / Beech / Bois Clair / Buchenholzfarbe (Buchemholzfarbem) [click here](#)
- Nero / Black / Noir / Schwarz [click here](#)
- Giallo Ochra / Yellow Ochre / Jaune / Ockergelb [click here](#)
- Verde Pino / Pine Green / Vert Pin / Piniengrün [click here](#)
- Blu Francia / French Blue / Bleu France / Französisch Blau [click here](#)
- Bluette / Bluette / Bleu Pétrole / Bluette [click here](#)
- Antracite Inglese / Charcoal Grey / Anthracite / Englisch Anthrazit (English Anthrazit) [click here](#)
- Rosso Alfa / Alfa Red / Rouge Alfa / Alfa Rot (Alfarot) [click here](#)
- Verde Muschio Chiaro / Dark Green (Light) / Vert Mousse Clair / Moosgrün, Hell [click here](#)
- Bianco / White / Blanc / Weiss [click here](#)
- Avorio / Ivory / Ivoire / Elfenbein [click here](#)
- Rosso / Farina Red / Rouge / Rot [click here](#)
- Blu / Blue / Bleu / Blau [click here](#)
- Verde Inglese / British Green / Vert Anglais / Englisch Grün [click here](#)

- Giallo Prototipo / Prototype Yellow (Jellow Prototype) / Jaune Prototype (Joune Prototype) / Prototype Gelb (Gelb Prototyp) [click here](#)
- Grigio Chiaro Metallizzato / Metallic light Grey / Gris Clair Métallisé / Hellgrau Metallisiert [click here](#)
- Grigio Medio Metallizzato / Metallic Medium Grey / Gris Moyen Métallisé / Mittelgrau Metallisiert [click here](#)
- Verde Oliva Metallizzato / Metallic Olive Green / Vert Olive Métallisé / Olivgrün Metallisiert [click here](#)
- Giallo Piper / Piper Yellow / Jaune Piper / Piper Gelb (Piper - Gelb) [click here](#)
- Prugna / Plum Violet / Bleu Prunelle / Pflaumenblau [click here](#)
- Azzuro Le Mans / Le Mans Blue / Bleu Le Mans / Le Mans Blau [click here](#)
- Blu Pervinca Metallizzato / Metallic Pervinca Blue / Bleu Pervinca Métallisé / Pervinca Blau Metallisiert [click here](#)
- Beige Chiaro Metallizzato / Metallic Light Beige / Beige Clair Métallisé / Hellbeige Metallisiert [click here](#)
- Bianco Zagato / White Zagato / Blanc Zagato / Weiss Zagato [click here](#)
- Giallo Zagato / Yellow Zagato / Jaune Zagato (Joune Zagato) / Gelb Zagato [click here](#)
- Rosso Zagato / Red Zagato / Rouge Zagato / Rot Zagato [click here](#)
- Grigio Metallizzato / Grey Metallic / Gris Métallisé / Grau Metallisiert [click here](#)
- Champagne Metallizzato / Metallic Champagne / Champagne Métallisé / Champagne Metallisiert [click here](#)
- Blu Medio / Medium Blue / Bleu Moyen / Mittelblau [click here](#)
- Verde / Green / Vert / Grün [click here](#)
- Grigio / Grey / Gris / Grau [click here](#)
- Rosso / Red / Rouge / Rot [click here](#)
- Arancio / Orange / Orange / Orange [click here](#)
- Oro Metallizzato / Metallic gold / Or Métallisé / Gold Metallisiert [click here](#)
- Arancio Metallizzato / Metallic Orange (Metalic Orange) / Orange Métallisé / Orange Metallisiert [click here](#)
- Verde Metallizzato / Metallic Green (Metalic Green) / Vert Métallisé / Grün Metallisiert [click here](#)
- Marrone Metallizzato / Metallic Brown (Metalic Brown) / Marron Métallisé / Kastanienbraun Metallisiert [click here](#)
- Argento Metallizzato / Metallic Silver (Metalic Silver) / Argent Métallisé / Silber Metallisiert (Silver Metallisiert) [click here](#)
- Bianco Capodimonte / Capodimonte White / Blanc Capodimonte / Capodimonte Weiss (Capodimonte Weis) [click here](#)
- Blu Posillipo / Posillipo Blue / Bleu Posillipo / Posillipo Blau [click here](#)
- Beige Ponza / Ponza Beige / Beige Ponza / Ponza Beige [click here](#)
- Verde Ischia / Ischia Green / Vert Ischia / Ischia Grün [click here](#)
- Grigio Vesuvio / Vesuvio Grey / Gris Vesuvio / Vesivio Grau [click here](#)
- Blu Procida / Procida Blue / Bleu Procida / Procida Blau [click here](#)

Quick Links to Interiors in Cloth

Interni in Panno / Interiors in Cloth / Interieurs en Drap / Innen Stoff

- A: Grigio Unito / Grey / Gris Uni / Uni Grau [click here](#)
- B: Cammello / Camel / Fauve / Kamelfarben [click here](#)
- C: Blu Scuro / Dark Blue / Bleu Foncé / Dunkelblau [click here](#)
- D: Grigio Marezzato / Marbled Grey / Gris Chiné / Graumeliert [click here](#)
- E: Marrone Marezzato / Marbled Brown / Marron Chiné / Braunmeliert [click here](#)
- F: Blu / Blue / Bleu / Blau [click here](#)
- G: Nero / Black / Noir / Schwarz [click here](#)
- H: Avana / Light Brown / Havane / Havanna [click here](#)
- I: Avana / Light Brown / Havane / Havanna [click here](#)
- L: Blu / Blue / Bleu / Blau [click here](#)

- M: Grigio / Grey / Gris / Grau [click here](#)
- N: Rosso / Red / Rouge / Rot [click here](#)
- O: Grigio / Grey / Gris / Grau [click here](#)
- P: Antracite / Charcoal Grey / Anthracite / Anthrazit [click here](#)
- Q: Blu Caravelle / Dark Blue Caravelle / Bleu Caravelle / Caravelle Blau [click here](#)
- R: Grigio City / City Grey / Gris City / City Grau [click here](#)
- S: Nocciola / Nut Brown / Noisette / Haselnuss [click here](#)
- T: Bruno / Coffee Brown / Café / Mocca-Braun [click here](#)
- U: Blu Navy / Navy Blue / Bleu Navy / Navy Blau [click here](#)
- V: Grigio Rocca / Rock Grey / Gris Rocher / Felsengrau [click here](#)

Quick Links to Interiors in Texalfa, Leather and Velvet

Interni in Texalfa, Pelle e Veluto / Interiors in Texalfa, Leather and Velvet / Interieurs en Texalfa, Cuir et Velours / Innen Kunstleder, Leder und Samtstoff

- 1: Nero / Black / Noir / Schwarz [click here](#)
 - 2: Cinghiale Maremma / Maremma Pigskin / Havane Foncé / Wildschweinbraun [click here](#)
 - 3: Amaranto / Maroon / Amarante / Amarantorot [click here](#)
 - 4: Nero / Black / Noir / Schwarz [click here](#)
 - 5: Cuoio Antico / Old Leather / Cuir Ancien / Altleder [click here](#)
 - 6: Amaranto / Maroon / Amarante / Amarantorot [click here](#)
 - 7: Marrone Cuoio / Brown / Marron / Kastanienbraun [click here](#)
 - 8: Pelle Rosso / Red Leather / Cuir Rouge / Rotes Leder [click here](#)
 - 9: Pelle Testa di Moro / Dark Brown Leather / Cuir Tête de Nègre / Dunkelbraun [click here](#)
 - 10: Cuoio / Tan / Tabac / Lederfarben [click here](#)
 - 11: Nero / Black / Noir / Schwarz [click here](#)
 - 12: Cinghiale Maremma / Maremma Pigskin / Havane Foncé / Wildschweinbraun [click here](#)
 - 13: Cuoio Naturale / Beige / Cuir Naturel / Echtes Leder Naturfarben [click here](#)
 - 14: Blu Marine / Dark Blue Marine / Bleu Mer / Marine Blau [click here](#)
 - 15: Blu Marine / Dark Blue Marine / Tabac Foncé / Tabakfarben [click here](#)
 - 16: Amaranto / Maroon / Amarante / Amarantorot [click here](#)
 - 17: Blu / Blue / Bleu / Blau [click here](#)
 - 18: Nero / Black / Noir / Schwarz [click here](#)
 - I: Antracite / Charcoal Grey / Anthracite / Anthrazit [click here](#)
 - II: Nocciola / Nut Brown / Noisette / Haselnuss [click here](#)
 - III: Grigio City / City Grey / Gris City / City Grau [click here](#)
 - IV: Blu Caravelle / Dark Blue Caravelle / Bleu Caravelle / Caravelle Blau [click here](#)
-

The text at the bottom reads as follows:

Note:

- Alphabetical index for cloth upholstery.
- Numerical index for Texalfa, PVC or leather.
- Roman numbers for velvet.

COLOUR GUIDE							June 1972
BODY COLOURS	INTERNAL TRIM						
	COUPE				SPIDER		
	GT JUNIOR 1.3 - 1.6	GT JUNIOR Z	2000 GT VELOCE	MONTREAL	JUNIOR 1.3 - 1.6	2000 VELOCE	
WHITE	D-1-3		P-1-13				
INDIGO GREY	D-1		Q-12		4-6	4-6	
QUARRY BEIGE	E-1		P-1				
MAROON	D-2		R-13				
DARK BLUE	D-2		R-13				
BEECH	E-2		S-13				
BLACK (on request)	D-2	10	R-13	M	6-7	6-7	
YELLOW OCHRE	D-1						
PINE GREEN	E-2		S-13				
FRENCH BLUE	D-2		R-13				
BLUETTE (on request)	D-3						
CHARCOAL GREY (on request)	E-2						
ALFA RED	D-1		P-1				
DARK GREEN (LIGHT)	E-2		R-12				
WHITE					4-6	4-6	
IVORY					4-6	4-6	
RED					4	4	
BLUE					4-6	4-6	
BRITISH GREEN					4-7	4-7	
YELLOW PROTOTYPE					4	4	
METALLIC LIGHT GREY	D-1		P-1-8-9	N	4-6	4-6	
METALLIC MEDIUM GREY	E-2		Q-13-8				
METALLIC OLIVE GREEN	E-2		S-12-9				
PIPER YELLOW			P-1				
PLUM VIOLET			R-13				
LE MANS BLUE			S-12				
METALLIC PERVINCA BLUE			S-13-9				
METALLIC LIGHT BEIGE			P-1-8				
WHITE ZAGATO		11					
YELLOW ZAGATO		11					
RED ZAGATO		11					
METALLIC GREY		11					
METALLIC CHAMPAGNE		11					
MEDIUM BLUE		10		L			
GREEN		11		H-I			
GREY				F-G			
RED				G			
ORANGE				G			
METALLIC GOLD				I			
METALLIC ORANGE				G-I			
METALLIC GREEN				I			
METALLIC BROWN				I			
METALLIC SILVER				N			

NOTE: ALPHABETHICAL INDEX FOR CLOTH UPHOLSTERY - NUMERICAL INDEX FOR TEXALFA PVC OR LEATHER - ROMAN NUMBERS FOR VELVET. THE INTERNAL FINISHES WITH TEXALFA EMBOSSED ARE AVAILABLE ONLY FOR THE MODELS 1300 GTA JUNIOR AND 2000 GT VELOCE.

The tonality of the colours is purely indicative. Alfa Romeo reserves the right to any changes in the above colour chart.

COLOUR GUIDE

June 1972

BODY COLOURS	INTERNAL TRIM			
	BERLINE			
	ALFASUD	GIULIA SUPER 1.3 - 1.6	ALFETTA	2000 BERLINA
ALFA RED	18	A-D-1	P-1	I-1
CAPODIMONTE WHITE	15 - 18			
POSILLIPO BLUE	15 - 16			
PONZA BEIGE	16 - 18			
ISCHIA GREEN	15 - 18			
VESUVIO GREY	16 - 17			
PROCIDA BLUE	15 - 16			
WHITE		A-1-3	P-1	I-1-12
INDIGO GREY		A-3	U-14	IV-14
QUARRY BEIGE		B-E-2	T-5	II-12
MAROON		A-2	V-13	II-III-13
DARK BLUE		A-D-2	V-13	II-III-13
BEECK		A-E-2	V-13	II-13
BLACK (on request)		A-2		II-12
YELLOW OCHRE		A-D-1		
PINE GREEN		B-E-2	T-13	II-12
FRENCH BLUE		A-2		II-13
BLUETTE (on request)		C-3		
CHARCOAL GREY (on request)		B-2		
METALLIC LIGHT GREY				II-1-12
METALLIC MEDIUM GREY		B-E-2	T-5	II-12
METALLIC OLIVE GREEN		B-E-2	T-5	II-12
PIPER YELLOW			P-1	I-1
PLUM VIOLET			V-13	II-III-13
LE MANS BLUE			P-13	II-13
METALLIC PERVINCA BLUE			V-13	II-III-13
METALLIC LIGHT BEIGE			P-5	I-12
DARK GREEN (LIGHT)		B-E-2	V-5	II-12

NOTE: ALPHABETHICAL INDEX FOR CLOTH UPHOLSTERY - NUMERICAL INDEX FOR TEXALFA PVC OR LEATHER - ROMAN NUMBERS FOR VELVET. THE INTERNAL FINISHES WITH TEXALFA EMBOSSED ARE AVAILABLE ONLY FOR THE MODELS 1300 GTA JUNIOR AND 2000 GT VELOCE.

The tonality of the colours is purely indicative, Alfa Romeo reserves the right to any changes in the above colour chart.

The Car Silhouettes

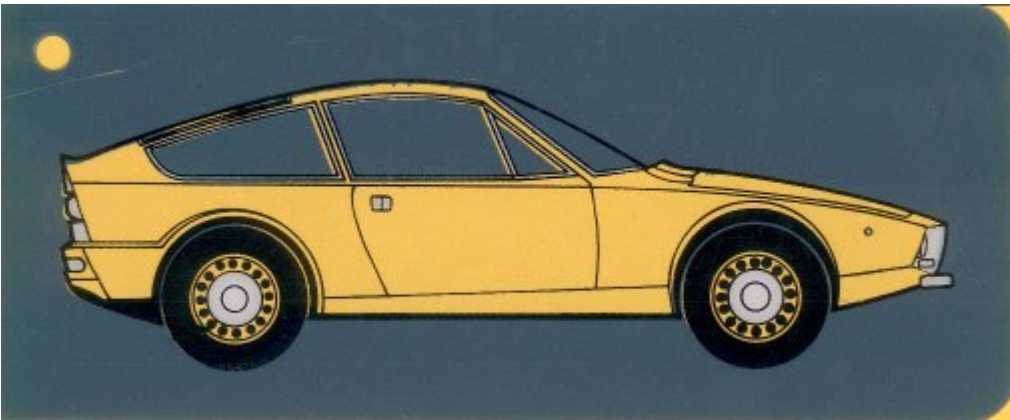
The 1972 Color Chart includes transparent templates that act as an overlay for the exterior paint swatches. That way, customers had it easier to figure out how a certain car model would look like in a specific color.

I put a yellow piece of paper behind the masks when I scanned the car silhouettes. If I figure out how to do it (as well as the time to do it), I'll replace these pictures with transparent masks.

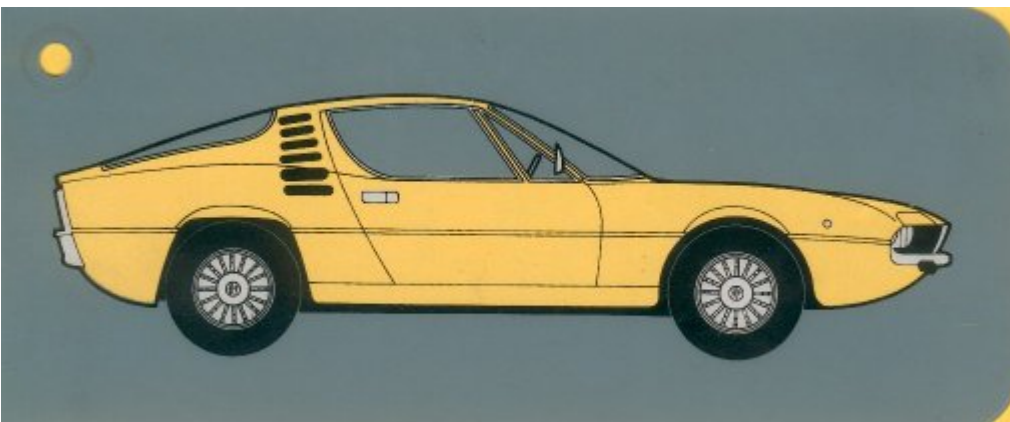
Coupe: GT Junior and GTV



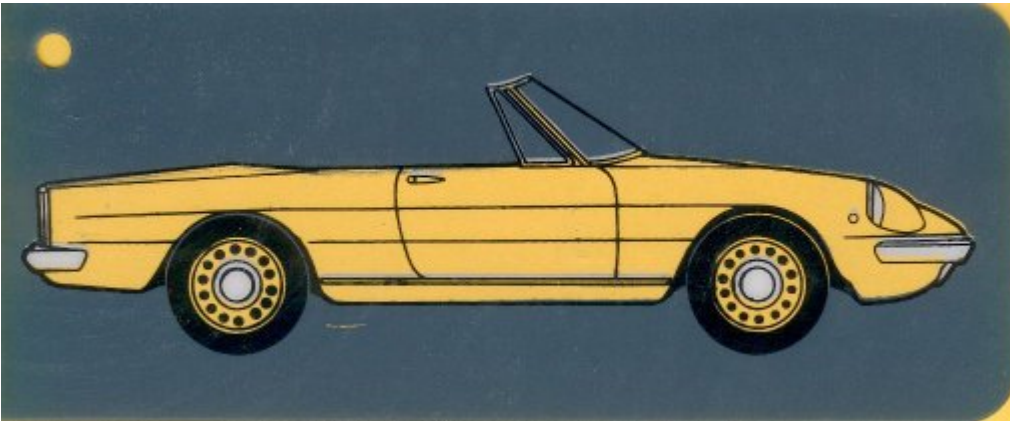
Coupe: Junior Zagato



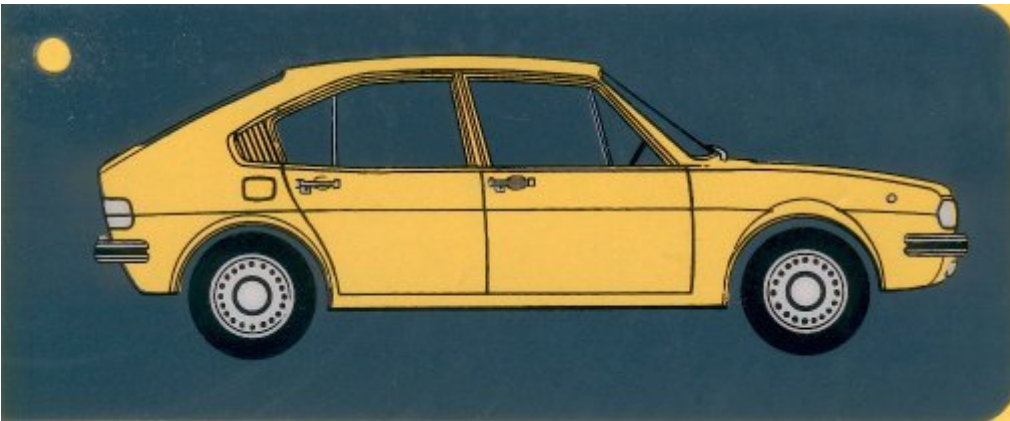
Coupe: Montreal



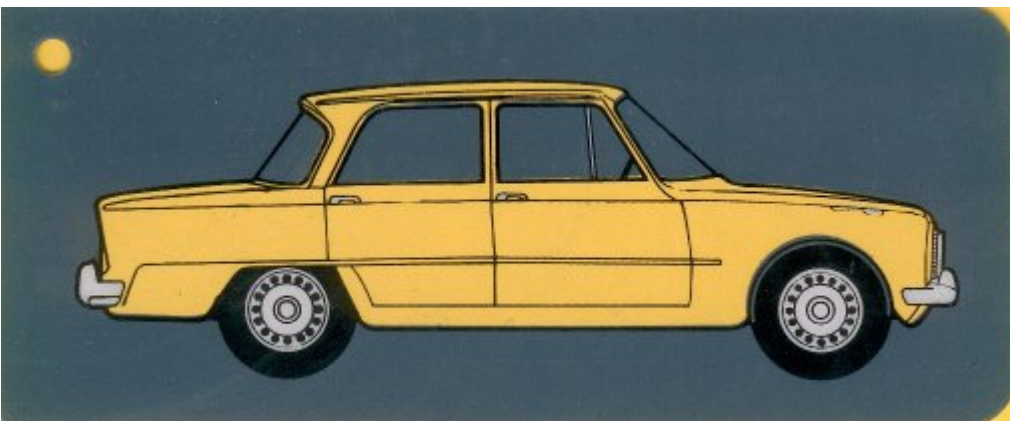
Spider: 1.3-1.6 and 2000 Spider Veloce



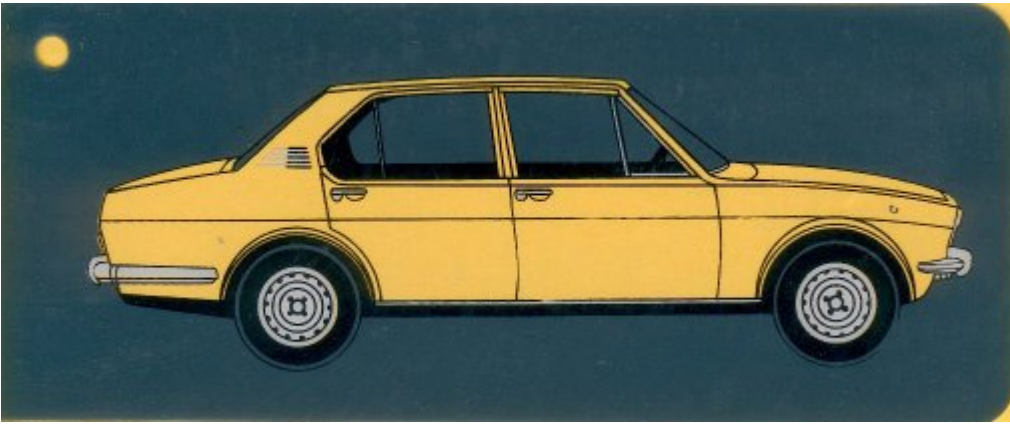
Berlina: Alfesud



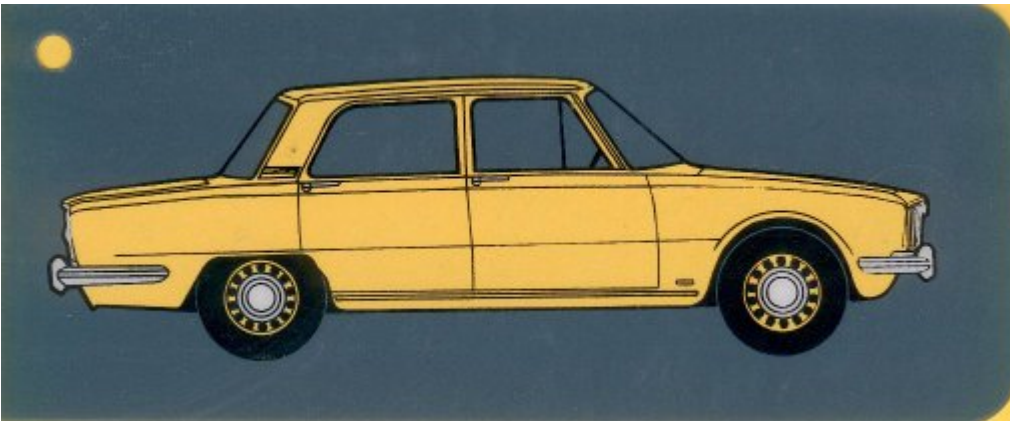
Berlina: Giulia Super



Berlina: Alfetta



Berlina: 2000 Berlina



Sequence: The scanned paint swatches are presented in the sequence they appear on the cross-reference sheets, except for Alfasud paints (listed last).

Biancospino

Paint Name (I/E/F/D): Biancospino / White / Blanc cassé / Weissdorn

Paint Code(s): AR-001, AR-013

a.k.a: Ermine White on 1971 105.51 and 105.71 cars.



Grigio Indaco

Paint Name (I/E/F/D): Grigio Indaco / Indigo Grey / Gris Indigo / Blaugrau

Paint Code(s): AR-735, AR-753

a.k.a: Misty Grey on 1971 105.51 and 105.71 cars.



Beige Cava

Paint Name (I/E/F/D): Beige Cava / Quarry Beige / Beige Sable / Sandbeige

Paint Code(s): AR-821

a.k.a: Desert Beige on 1971 105.51 and 105.71 cars.



Rosso Amaranto

Paint Name (I/E/F/D): Rosso Amaranto / Marroon / Rouge Amarante / Weinrot
Paint Code(s): AR-308, AR-509



Blu Olandese

Paint Name (I/E/F/D): Blu Olandese / Dark Blue / Bleu Hollandais / Hollandblau
Paint Code(s): AR-343



Faggio

Paint Name (I/E/F/D): Faggio / Beech / Bois Clair / Buchenholzfarbe (Buchenholzfarbem)
Paint Code(s): AR-516 (?)



Nero (on request)

Paint Name (I/E/F/D): Nero / Black / Noir / Schwarz

Paint Code(s): AR-601, AR-817, AR-901, AR-904, AR-905, AR-915



Giallo Ochra

Paint Name (I/E/F/D): Giallo Ochra / Yellow Ochre / Jaune / Ockergelb

Paint Code(s): AR-109

a.k.a: Ochre on 1971 105.51 and 105.71 cars.



Verde Pino

Paint Name (I/E/F/D): Verde Pino / Pine Green / Vert Pin / Piniengrün

Paint Code(s): AR-216, AR-234

Ditzler/PPG #43782 / DuPont #8775



Blu Francia

Paint Name (I/E/F/D): Blu Francia / French Blue / Bleu France / Französisch Blau
Paint Code(s): AR-342



Bluette (on request)

Paint Name (I/E/F/D): Bluette / Bluette / Bleu Pétrole / Bluette
Paint Code(s): AR-506



Antracite Inglese (on request)

Paint Name (I/E/F/D): Antracite Inglese / Charcoal Grey / Anthracite / Englisch Anthrazit
(English Anthrazit)

Paint Code(s): AR-736

Note: The bluish tint is probably a scanning error.



Rosso Alfa

Paint Name (I/E/F/D): Rosso Alfa / Alfa Red / Rouge Alfa / Alfa Rot (Alfarot)

Paint Code(s): AR-130, AR-210, AR-303, AR-501, AR-555



Verde Muschio Chiaro

Paint Name (I/E/F/D): Verde Muschio Chiaro / Dark Green (Light) / Vert Mousse Clair / Moosgrün, Hell

Paint Code(s): AR-227

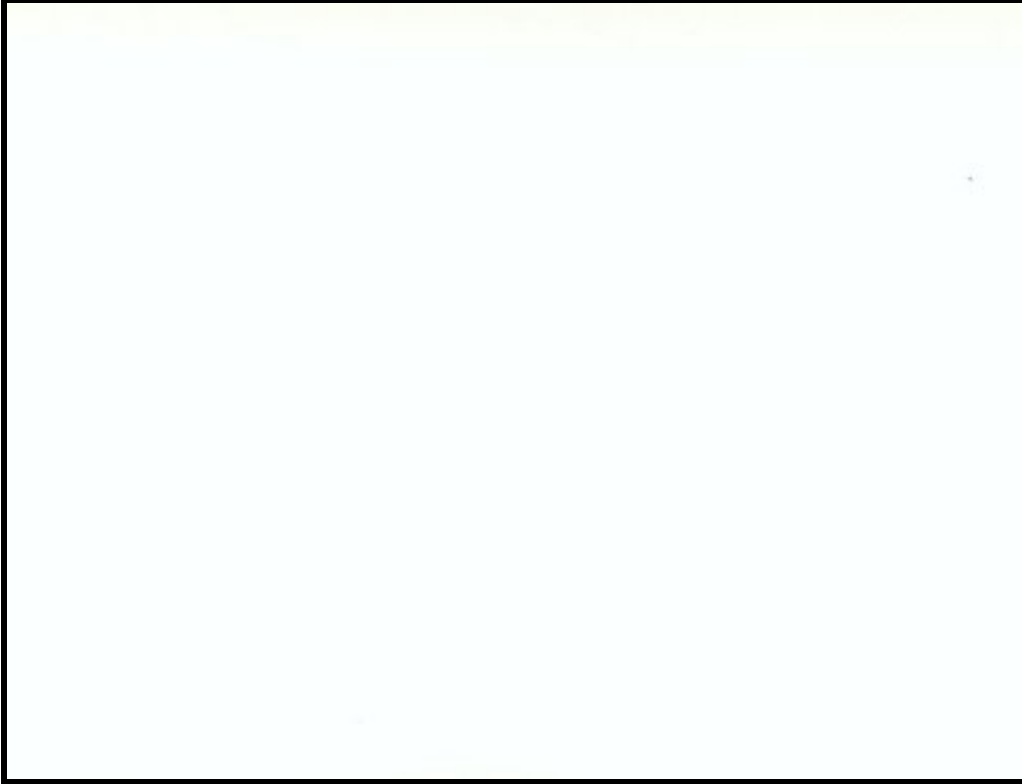
a.k.a: Moss Green (AR-209, darker than AR-227) on 1971 105.51 and 105.71 cars.



Bianco

Paint Name (I/E/F/D): Bianco / White / Blanc / Weiss

Paint Code(s): AR-241



Avorio

Paint Name (I/E/F/D): Avorio / Ivory / Ivoire / Elfenbein

Paint Code(s): AR-129

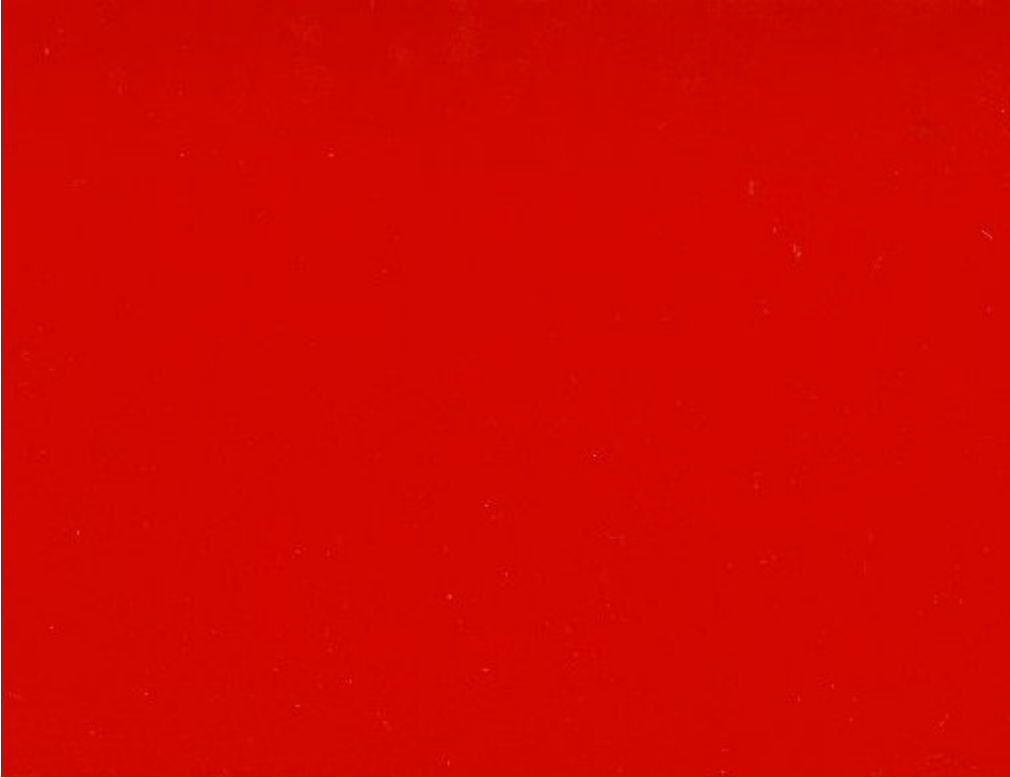
Note: See also [this post](#) and the discussion that follows for information about AR-129 and the various shades of AR-103 Avorio and Avorio Pininfarina.



Rosso

Paint Name (I/E/F/D): Rosso / Farina Red / Rouge / Rot

Paint Code(s): AR-304, AR-514



Blu

Paint Name (I/E/F/D): Blu / Blue / Bleu / Blau

Paint Code(s): AR-323, AR-363 (?)

See also [this thread](#).



Verde Inglese

Paint Name (I/E/F/D): Verde Inglese / British Green / Vert Anglais / Englisch Grün
Paint Code(s): AR-219, AR-306
Ditzler/PPG #44848 / DuPont #37003



Giallo Prototipo

Paint Name (I/E/F/D): Giallo Prototipo / Prototype Yellow (Jellow Prototype) / Jaune Prototype (Joune Prototype) / Prototype Gelb (Gelb Prototyp)

Paint Code(s): AR-119



Grigio Chiaro Metallizzato

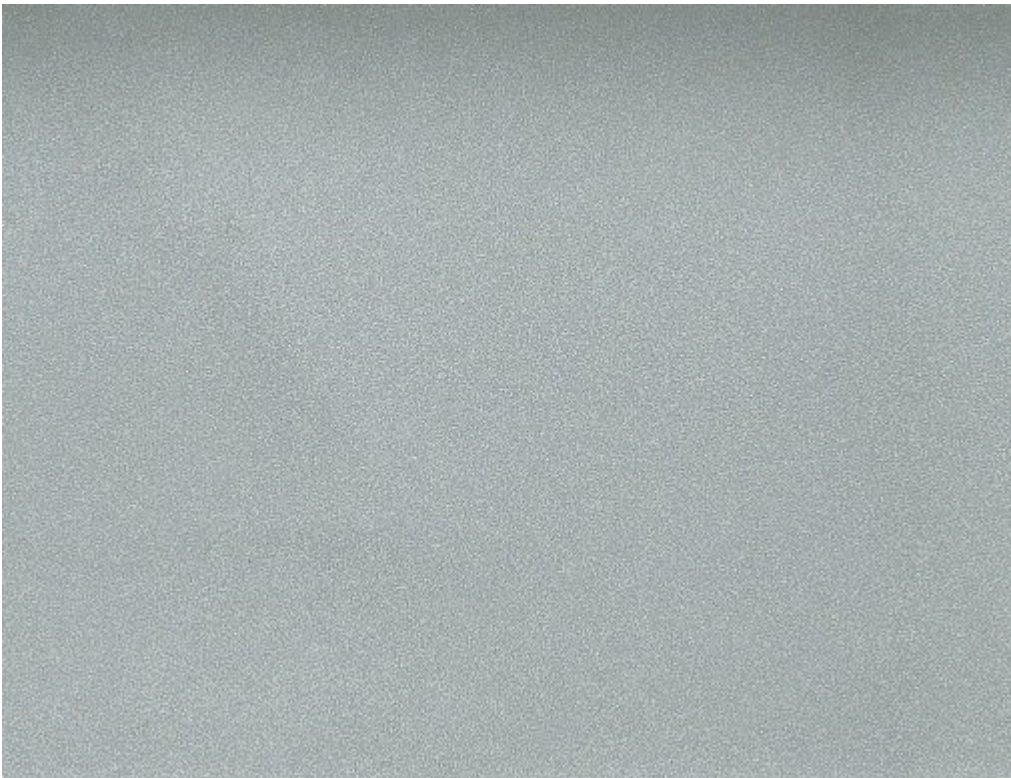
Paint Name (I/E/F/D): Grigio Chiaro Metallizzato / Metallic light Grey / Gris Clair Métallisé / Hellgrau Metallisiert

Paint Code(s):

- AR-727 (1966-1980), Ditzler/PPG #32838, Du Pont #43078, [Standex Classics](#).
- AR-727-1 (1972), Du Pont #8751.
- AR-737 (1969-1978), Du Pont #37005, #42667.
- AR-748 (1976-1984), Ditzler/PPG 32838, Du Pont #43078.
- AR-765 (1982-1985)
- AR-775 (1987-1989)

The paints are also available from [Glasurit](#) and [Standex Classics](#).

Manufacturer codes were collected from various sources. Use at your own risk.



Grigio Medio Metallizzato

Paint Name (I/E/F/D): Grigio Medio Metallizzato / Metallic Medium Grey / Gris Moyen Métallisé / Mittelgrau Metallisiert

Paint Code(s): AR-728, AR-749, AR-776

a.k.a: Gunmetal Metallic on 1971 105.51 and 105.71 cars.



Verde Oliva Metallizzato

Paint Name (I/E/F/D): Verde Oliva Metallizzato / Metallic Olive Green / Vert Olive Métallisé / Olivgrün Metallisiert

Paint Code(s): AR-213, AR-235



Giallo Piper

Paint Name (I/E/F/D): Giallo Piper / Piper Yellow / Jaune Piper / Piper Gelb (Piper - Gelb)

Paint Code(s): AR-116

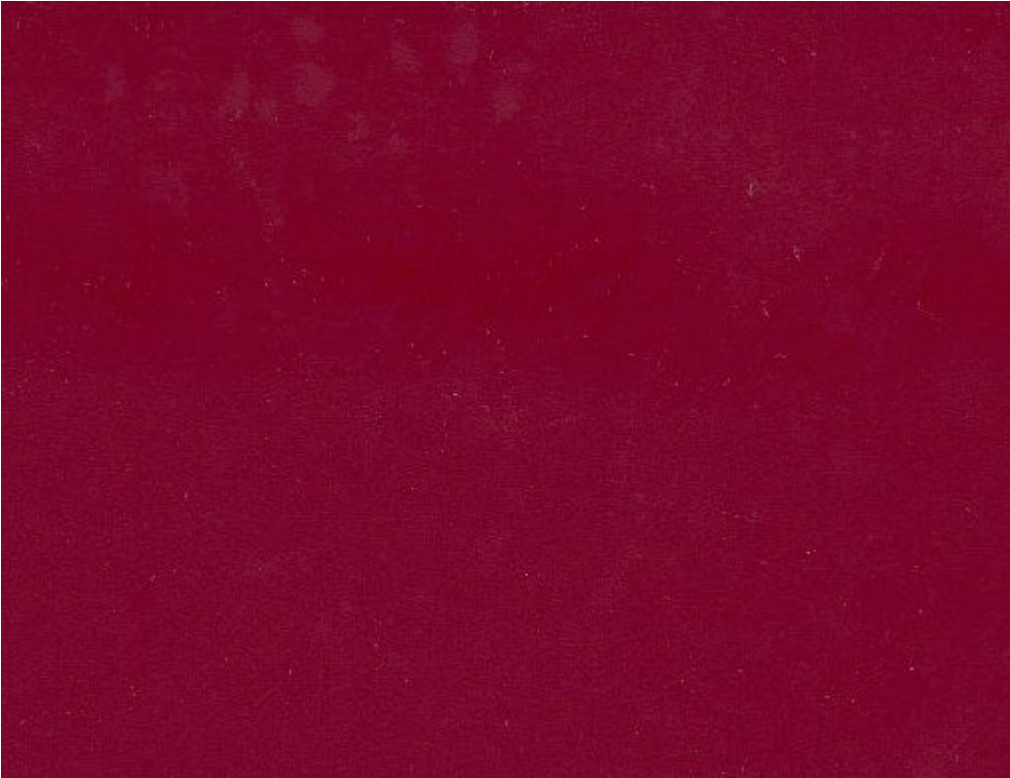


Prugna

Paint Name (I/E/F/D): Prugna / Plum Violet / Bleu Prunelle / Pflaumenblau

Paint Code(s): AR-525

a.k.a: Plum (AR-509) on 1971 105.51 and 105.71 cars.



Azzuro Le Mans

Paint Name (I/E/F/D): Azzuro Le Mans / Le Mans Blue / Bleu Le Mans / Le Mans Blau

Paint Code(s): AR-348



Blu Pervinca Metallizzato

Paint Name (I/E/F/D): Blu Pervinca Metallizzato / Metallic Pervinca Blue / Bleu Pervinca
Métallisé / Pervinca Blau Metallisiert

Paint Code(s): AR-349, AR-357, AR-367



Beige Chiaro Metallizzato

Paint Name (I/E/F/D): Beige Chiaro Metallizzato / Metallic Light Beige / Beige Clair Métallisé / Hellbeige Metallisiert

Paint Code(s): AR-827, AR-835



Bianco Zagato

Paint Name (I/E/F/D): Bianco Zagato / White Zagato / Blanc Zagato / Weiss Zagato

Paint Code(s): (???)



Giallo Zagato

Paint Name (I/E/F/D): Giallo Zagato / Yellow Zagato / Jaune Zagato (Joune Zagato) / Gelb Zagato

Paint Code(s): AR-117 (?)



Rosso Zagato

Paint Name (I/E/F/D): Rosso Zagato / Red Zagato / Rouge Zagato / Rot Zagato

Paint Code(s): AR-519



Grigio Metallizzato

Paint Name (I/E/F/D): Grigio Metallizzato / Grey Metallic / Gris Métallisé / Grau Metallisiert

Paint Code(s):



Champagne Metallizzato

Paint Name (I/E/F/D): Champagne Metallizzato / Metallic Champagne / Champagne Métallisé / Champagne Metallisiert

Paint Code(s): AR-855



Blu Medio

Paint Name (I/E/F/D): Blu Medio / Medium Blue / Bleu Moyen / Mittelblau

Paint Code(s): AR-350



Verde

Paint Name (I/E/F/D): Verde / Green / Vert / Grün

Paint Code(s): AR-241



Grigio

Paint Name (I/E/F/D): Grigio / Grey / Gris / Grau

Paint Code(s): (???)



Rosso

Paint Name (I/E/F/D): Rosso / Red / Rouge / Rot

Paint Code(s): AR-539, AR-555, AR-4501



Arancio

Paint Name (I/E/F/D): Arancio / Orange / Orange / Orange

Paint Code(s): AR-134



Oro Metallizzato

Paint Name (I/E/F/D): Oro Metallizzato / Metallic gold / Or Métallisé / Gold Metallisiert

Paint Code(s): AR-826



Arancio Metallizzato

Paint Name (I/E/F/D): Arancio Metallizzato / Metallic Orange (Metalic Orange) / Orange
Métallisé / Orange Metallisiert

Paint Code(s): AR-602



Verde Metallizzato

Paint Name (I/E/F/D): Verde Metallizzato / Metallic Green (Metalic Green) / Vert Métallisé / Grün Metallisiert

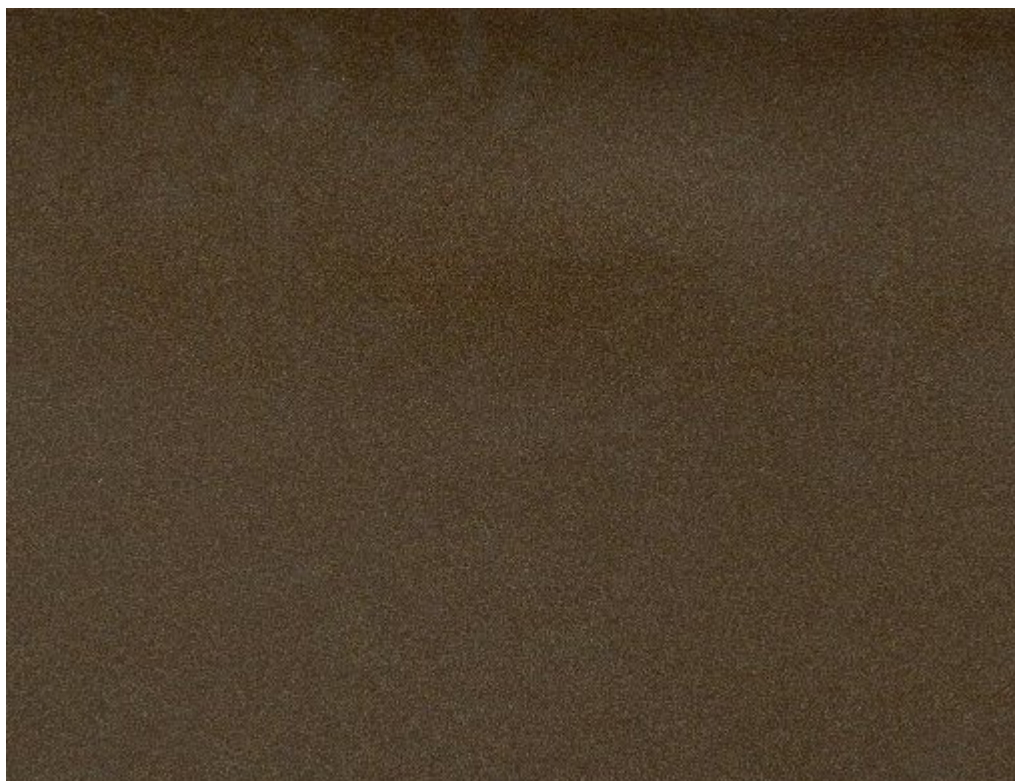
Paint Code(s): AR-240, AR-353



Marrone Metallizzato

Paint Name (I/E/F/D): Marrone Metallizzato / Metallic Brown (Metalic Brown) / Marron Métallisé / Kastanienbraun Metallisiert

Paint Code(s): AR-528 (?)



Argento Metallizzato

Paint Name (I/E/F/D): Argento Metallizzato / Metallic Silver (Metalic Silver) / Argent Métallisé / Silber Metallisiert (Silver Metallisiert)

Paint Code(s): AR-676

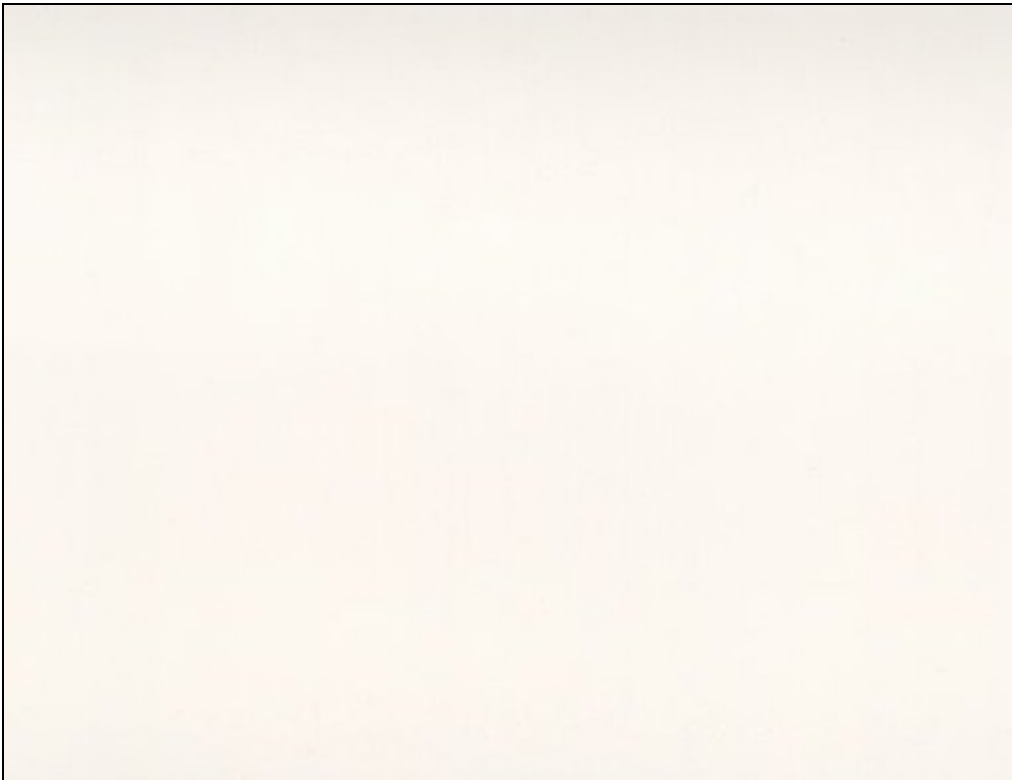


Bianco Capodimonte

Paint Name (I/E/F/D): Bianco Capodimonte / Capodimonte White / Blanc Capodimonte / Capodimonte Weiss (Capodimonte Weis)

Paint Code(s): AR-015, AR-018, AR-023

Note: "Capodimonte" means "mountain top". My first guess was that this name stems from somebody being reminiscent about what the snow capped Italian alps look like on some days at sunset. Later, I learned that Capodimonte is an area in the hills of Naples, Italy, and also the name of a world famous porcelain factory that no longer exists. Today, I tend to believe that the name of this paint is in reference to this porcelain.



Paint: Blu Posillipo

Paint Name (I/E/F/D): Blu Posillipo / Posillipo Blue / Bleu Posillipo / Posillipo Blau

Paint Code(s): AR-355, AR-369



Beige Ponza

Paint Name (I/E/F/D): Beige Ponza / Ponza Beige / Beige Ponza / Ponza Beige

Paint Code(s): AR-830



Verde Ischia

Paint Name (I/E/F/D): Verde Ischia / Ischia Green / Vert Ischia / Ischia Grün

Paint Code(s): AR-230



Grigio Vesuvio

Paint Name (I/E/F/D): Grigio Vesuvio / Vesuvio Grey / Gris Vesuvio / Vesivio Grau

Paint Code(s): AR-742



Blu Procida

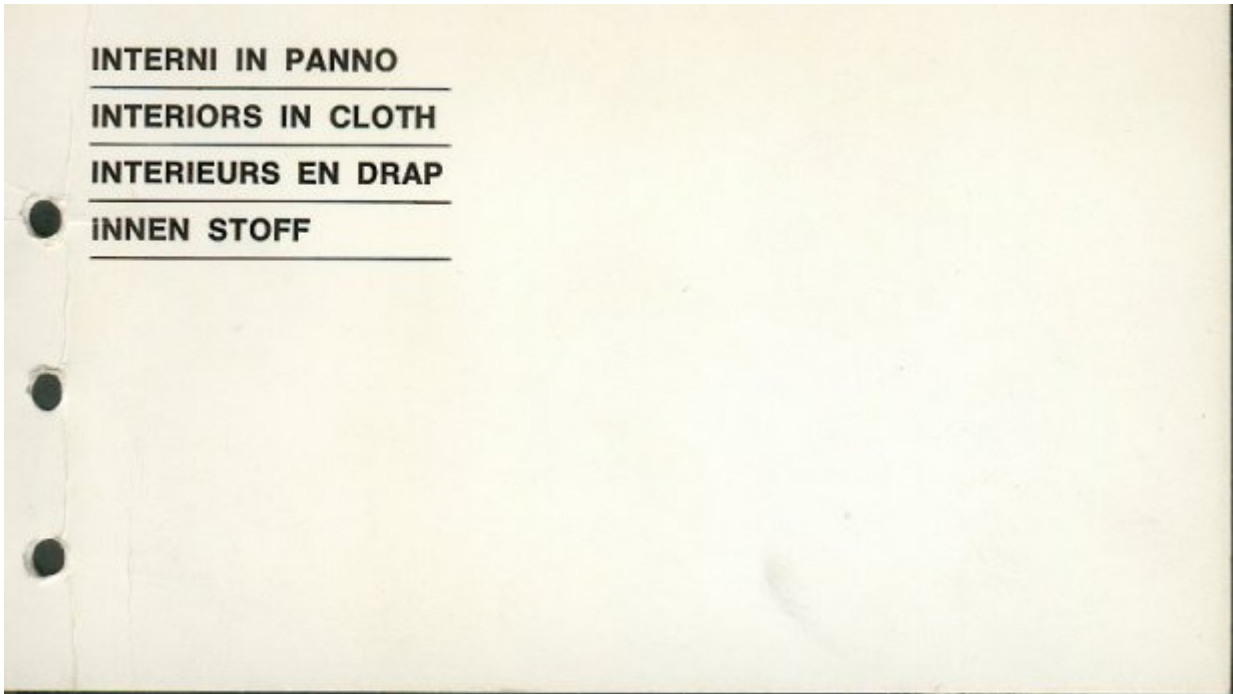
Paint Name (I/E/F/D): Blu Procida / Procida Blue / Bleu Procida / Procida Blau

Paint Code(s): AR-353



Interiors in Cloth: Introduction

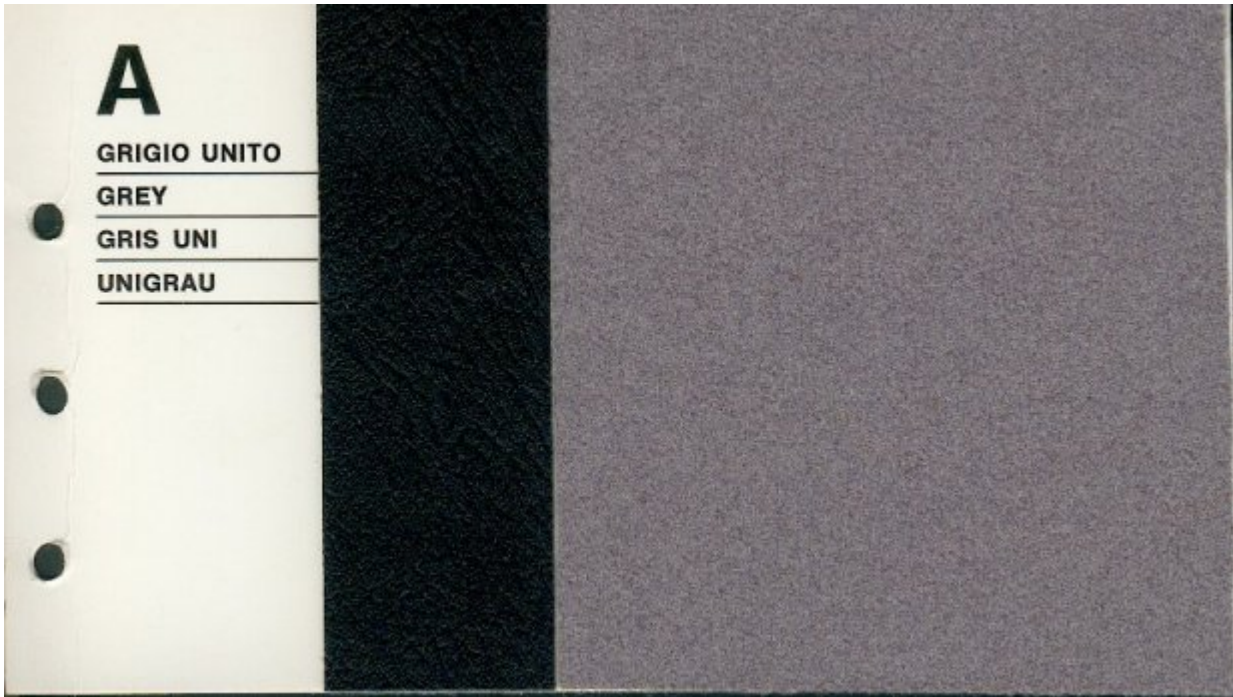
These samples were scanned at 150 DPI but had to be reduced to 75% of their original size due to the 100 KB limitation.



Interiors in Cloth: A - Grigio Unito

Color scheme: A

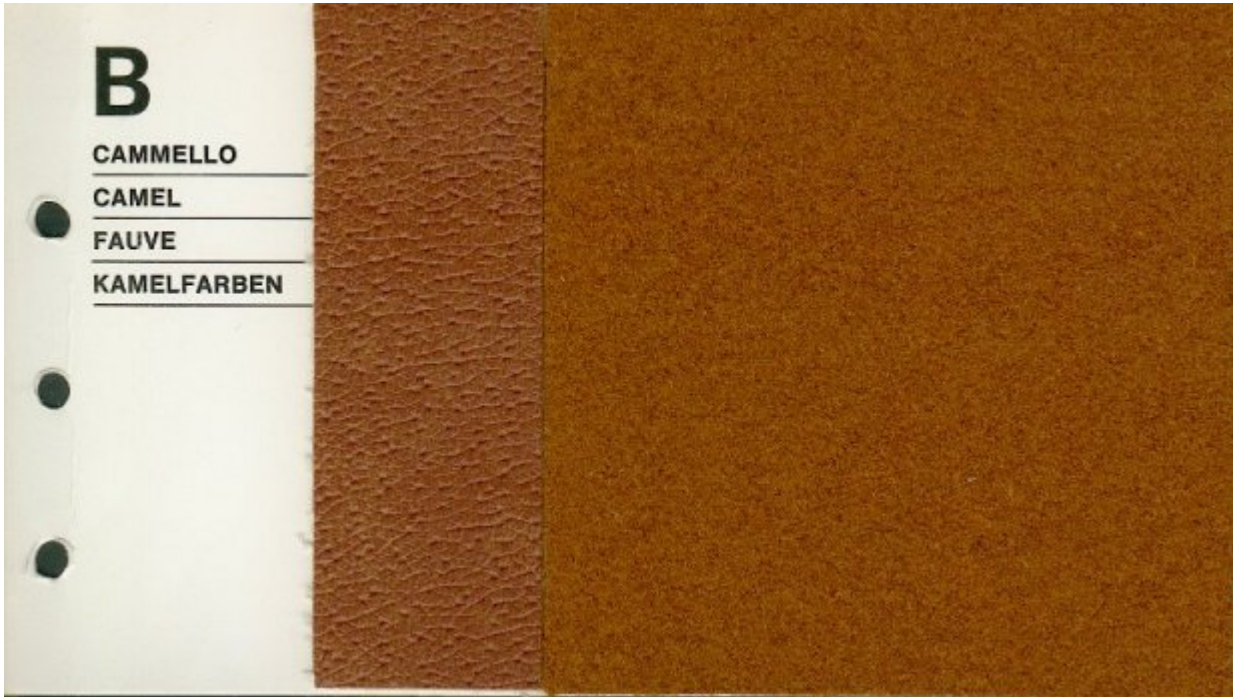
Name (I/E/F/D): Grigio Unito / Grey / Gris Uni / Uni Grau



Interiors in Cloth: B - Cammello

Color scheme: B

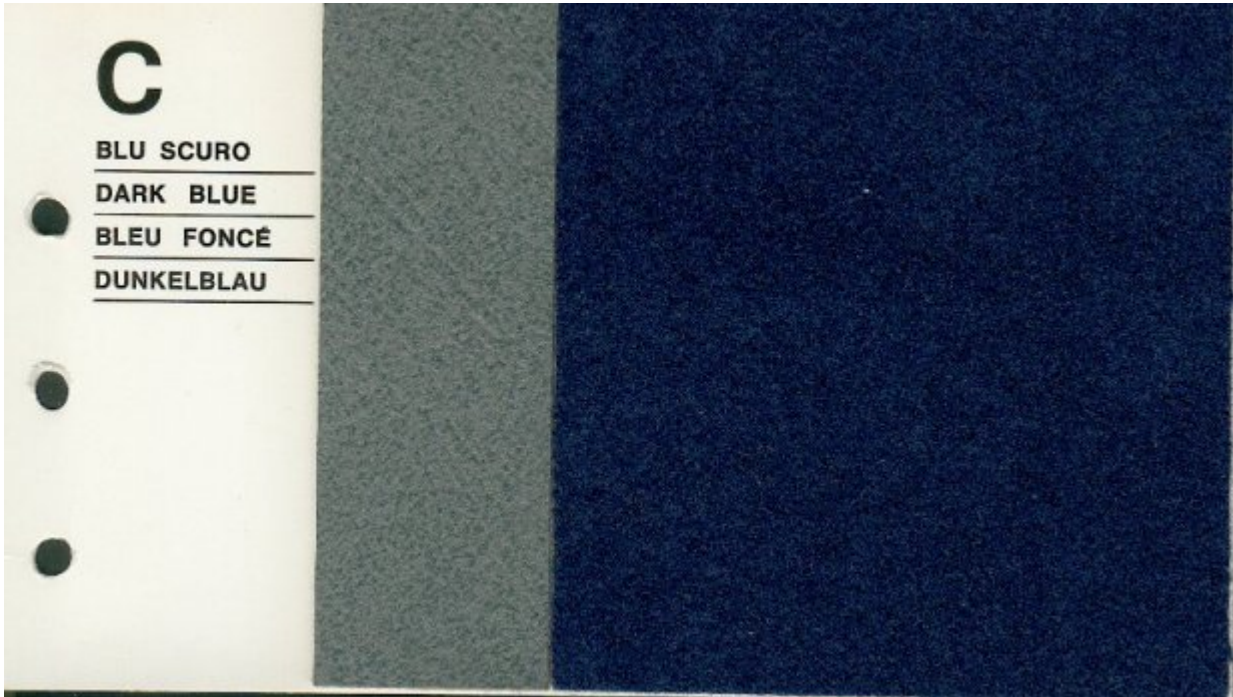
Name (I/E/F/D): Cammello / Camel / Fauve / Kamelfarben



Interiors in Cloth: C - Blu Scuro

Color scheme: C

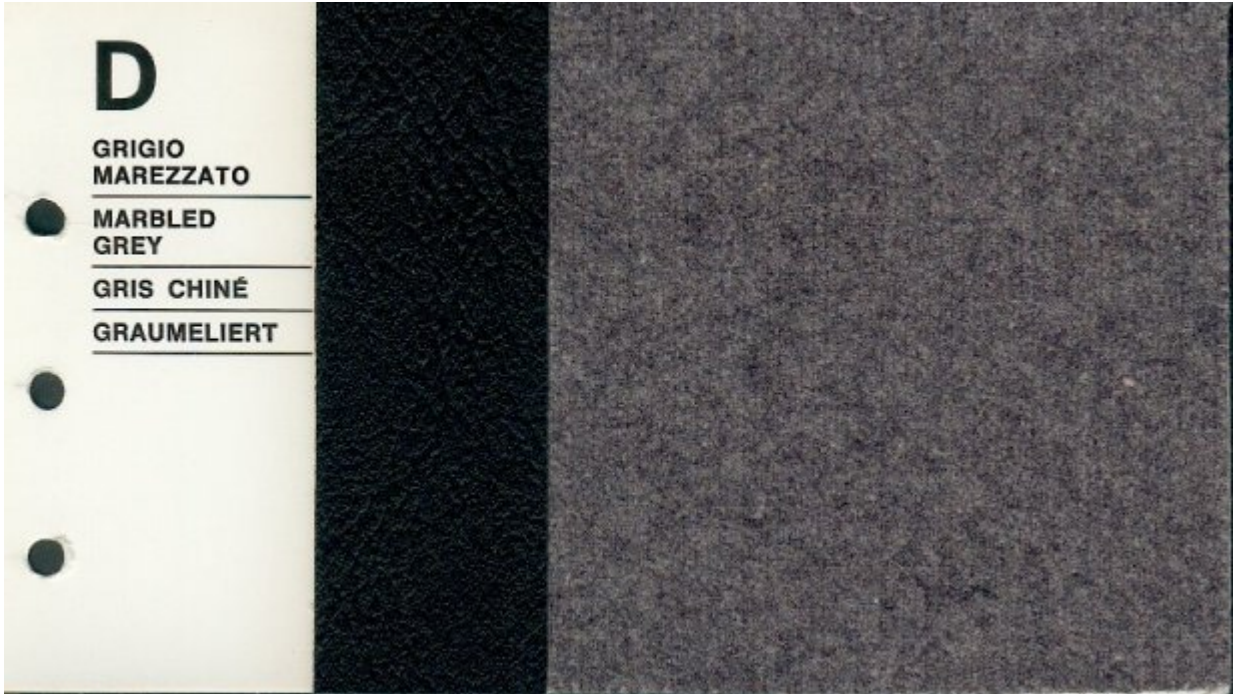
Name (I/E/F/D): Blu Scuro / Dark Blue / Bleu Foncé / Dunkelblau



Interiors in Cloth: D - Grigio Marezzato

Color scheme: D

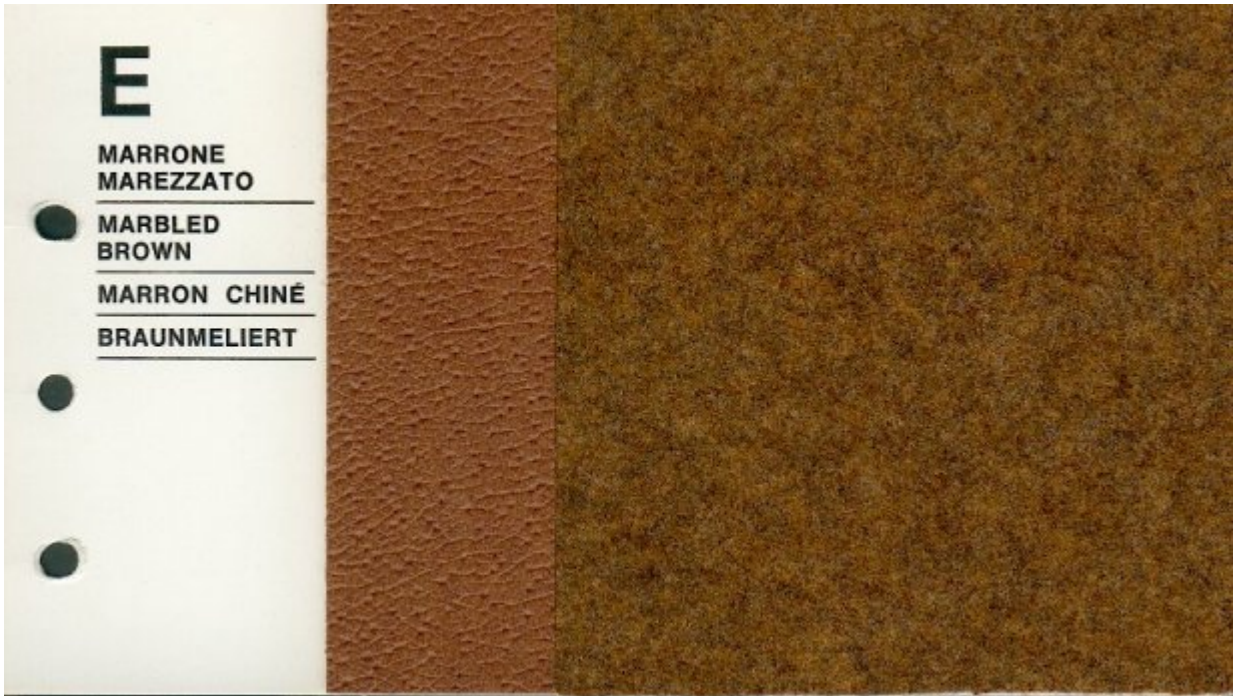
Name (I/E/F/D): Grigio Marezzato / Marbled Grey / Gris Chiné / Graumeliert



Interiors in Cloth: E - Marrone Marezzato

Color scheme: E

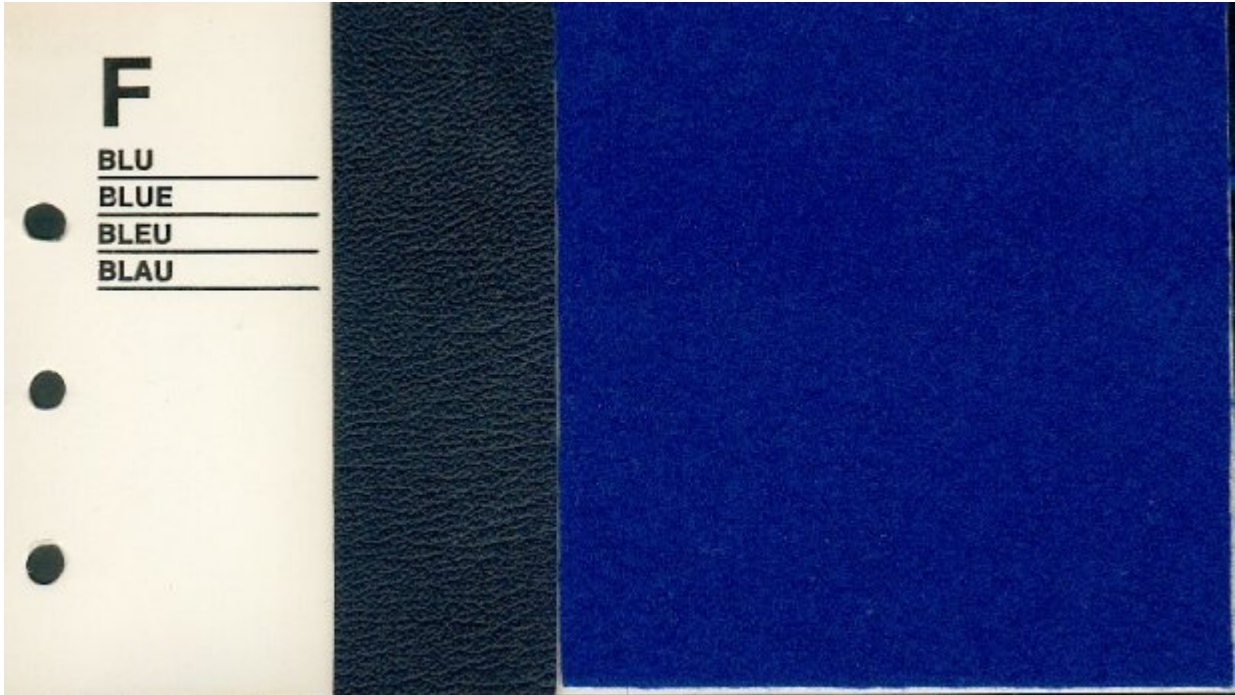
Name (I/E/F/D): Marrone Marezzato / Marbled Brown / Marron Chiné / Braunmeliert



Interiors in Cloth: F - Blu

Color scheme: F

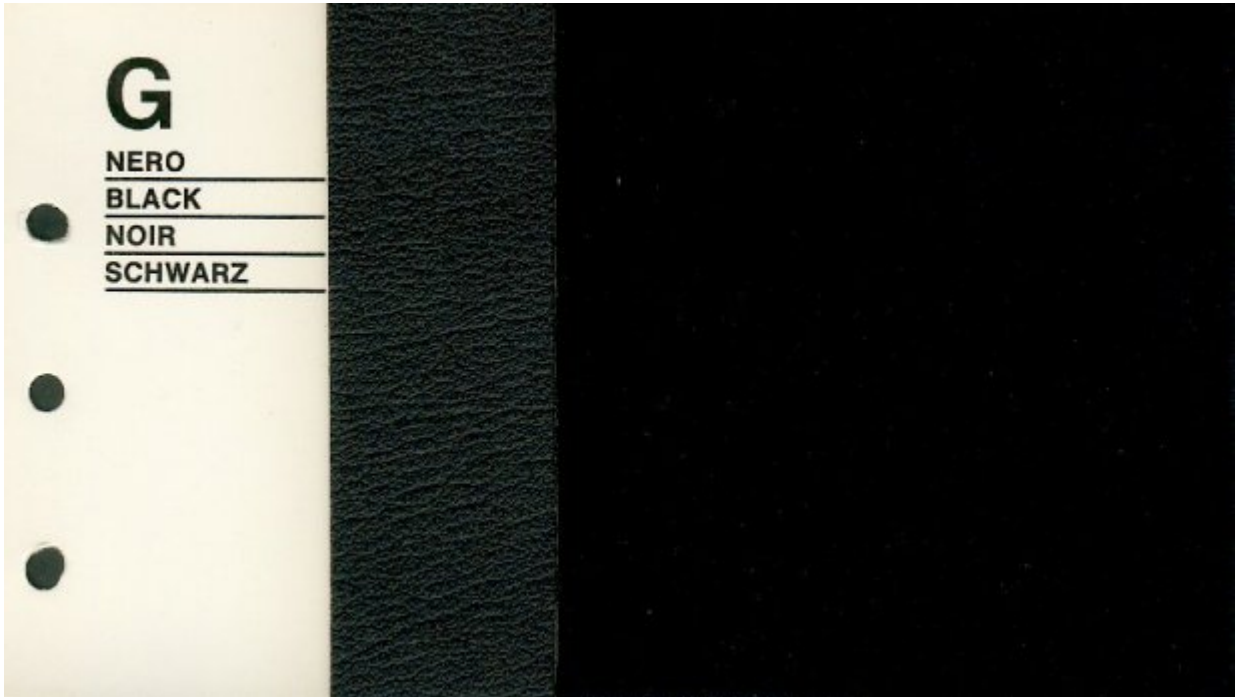
Name (I/E/F/D): Blu / Blue / Bleu / Blau



Interiors in Cloth: G - Nero

Color scheme: G

Name (I/E/F/D): Nero / Black / Noir / Schwarz

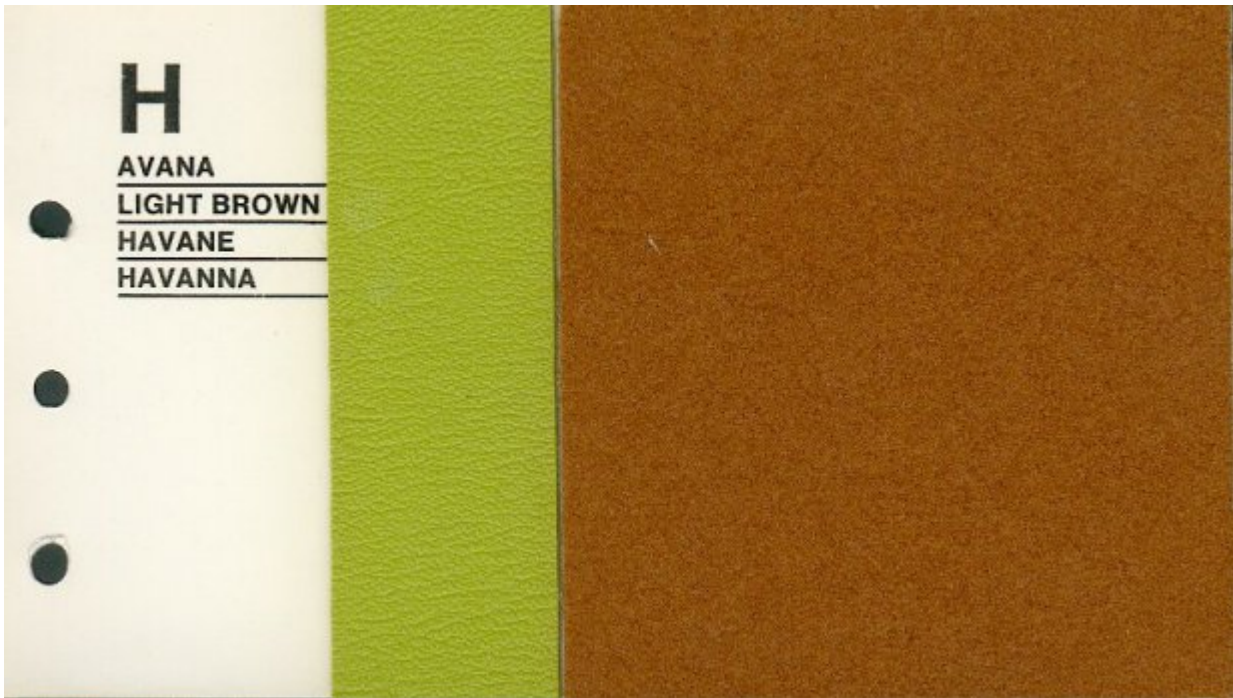


Interiors in Cloth: H - Avana

Color scheme: H

Name (I/E/F/D): Avana / Light Brown / Havane / Havanna

Note: Color schemes H and I do have the same names.



Interiors in Cloth: I - Avana

Color scheme: I

Name (I/E/F/D): Avana / Light Brown / Havane / Havanna

Note: Color schemes H and I do have the same names.



Interiors in Cloth: J - (none)

Color scheme: J

Does not exist.

Interiors in Cloth: K - (none)

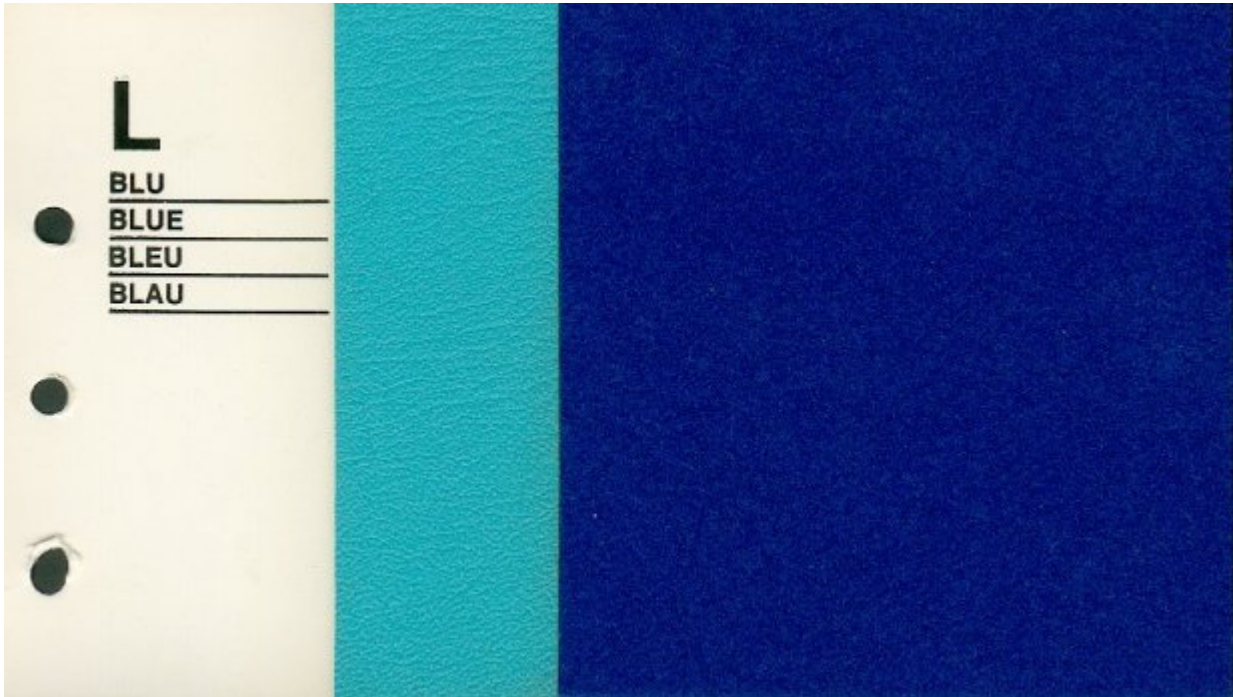
Color scheme: K

Does not exist.

Interiors in Cloth: L - Blu

Color scheme: L

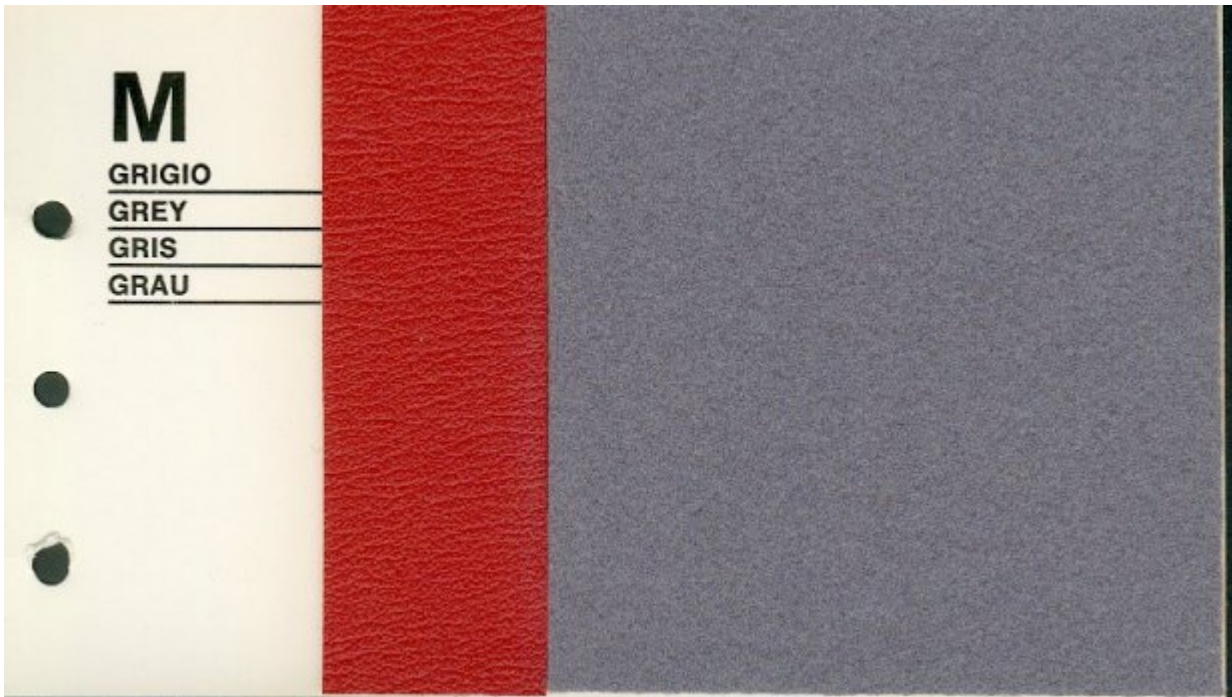
Name (I/E/F/D): Blu / Blue / Bleu / Blau



Interiors in Cloth: M - Grigio

Color scheme: M

Name (I/E/F/D): Grigio / Grey / Gris / Grau



Interiors in Cloth: N - Rosso

Color scheme: N

Name (I/E/F/D): Rosso / Red / Rouge / Rot



Interiors in Cloth: O - Grigio

Color scheme: O

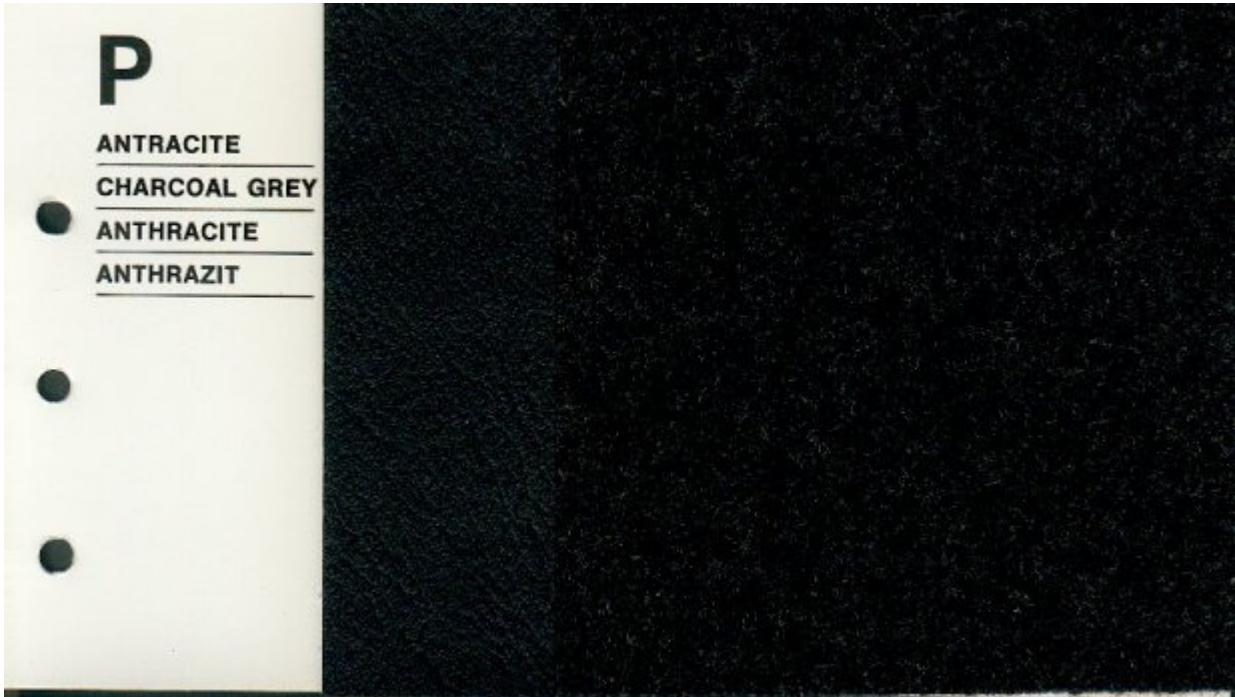
Name (I/E/F/D): Grigio / Grey / Gris / Grau



Interiors in Cloth: P - Antracite

Color scheme: P

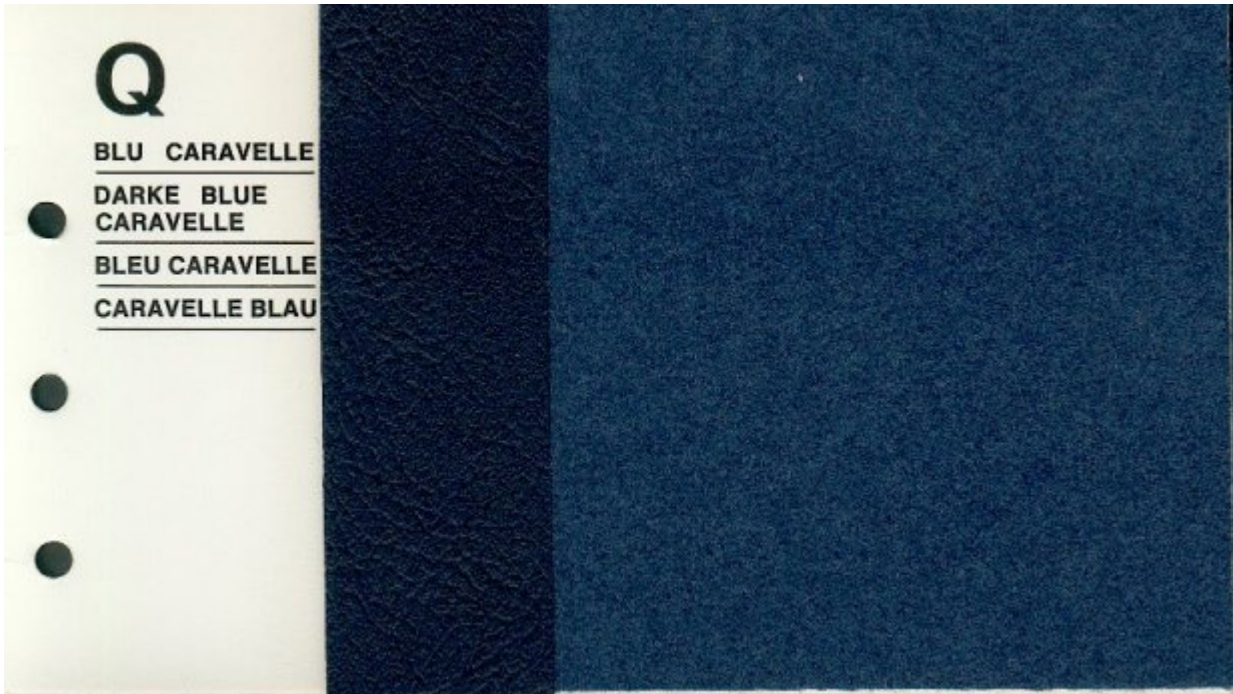
Name (I/E/F/D): Antracite / Charcoal Grey / Anthracite / Anthrazit



Interiors in Cloth: Q - Blu Caravelle

Color scheme: Q

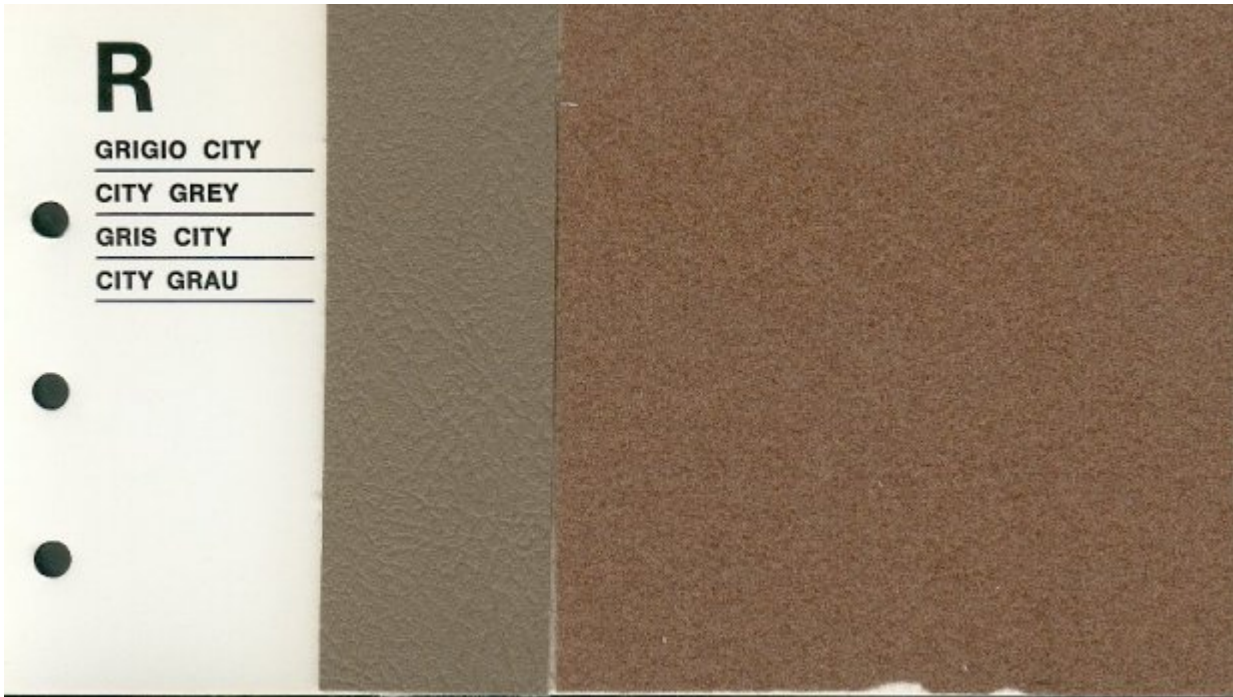
Name (I/E/F/D): Blu Caravelle / Dark Blue Caravelle / Bleu Caravelle / Caravelle Blau



Interiors in Cloth: R - Grigio City

Color scheme: R

Name (I/E/F/D): Grigio City / City Grey / Gris City / City Grau



Interiors in Cloth: S - Nocciola

Color scheme: S

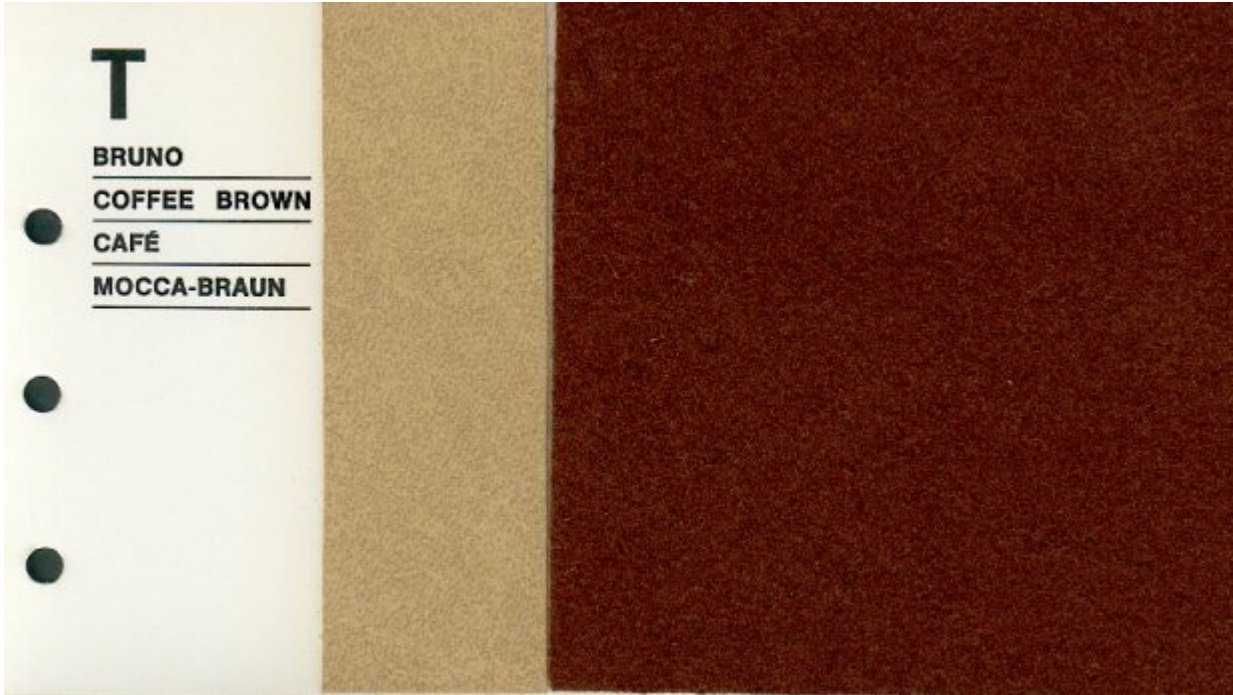
Name (I/E/F/D): Nocciola / Nut Brown / Noisette / Haselnuss



Interiors in Cloth: T - Bruno

Color scheme: T

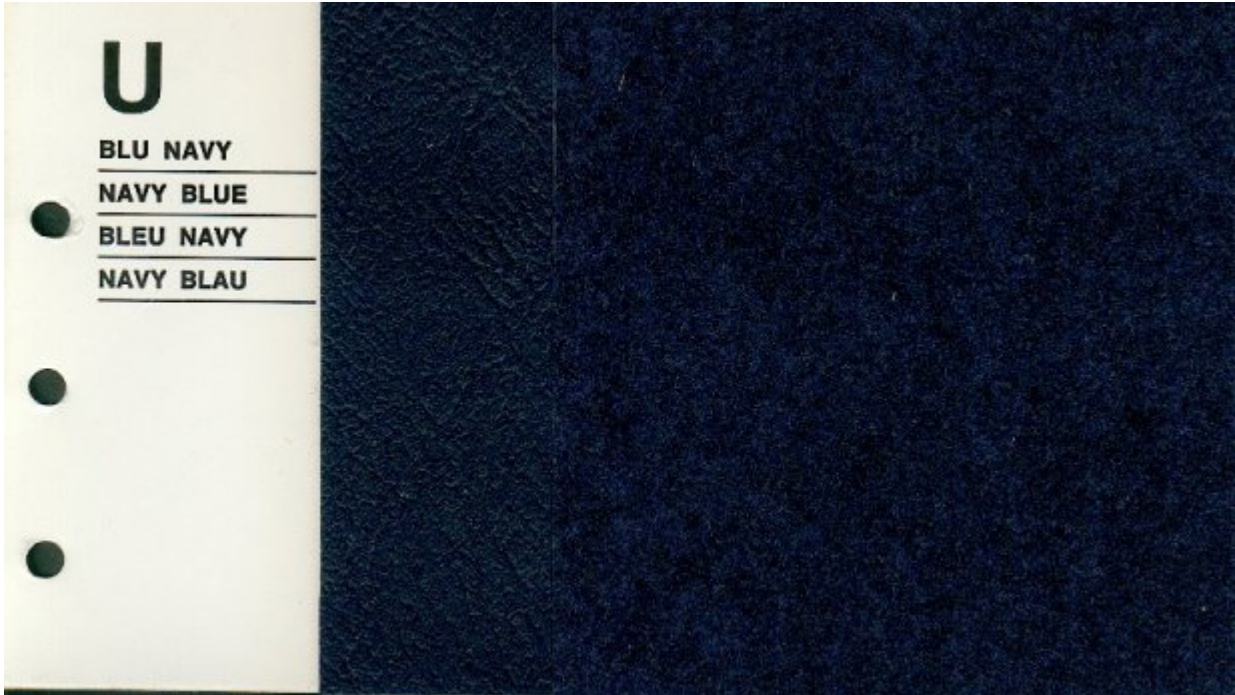
Name (I/E/F/D): Bruno / Coffee Brown / Café / Mocca-Braun



Interiors in Cloth: U - Blu Navy

Color scheme: U

Name (I/E/F/D): Blu Navy / Navy Blue / Bleu Navy / Navy Blau



Interiors in Cloth: V - Grigio Rocca

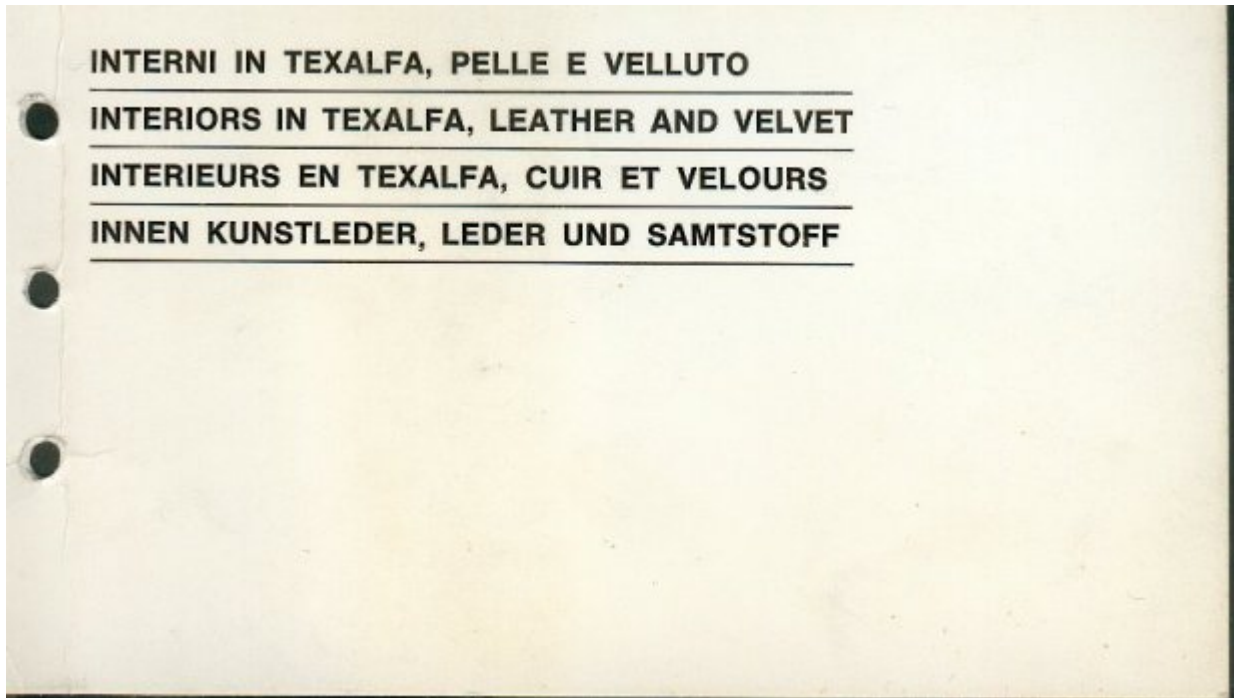
Color scheme: V

Name (I/E/F/D): Grigio Rocca / Rock Grey / Gris Rocher / Felsengrau



Interiors in Texalfa, Leather and Velvet:

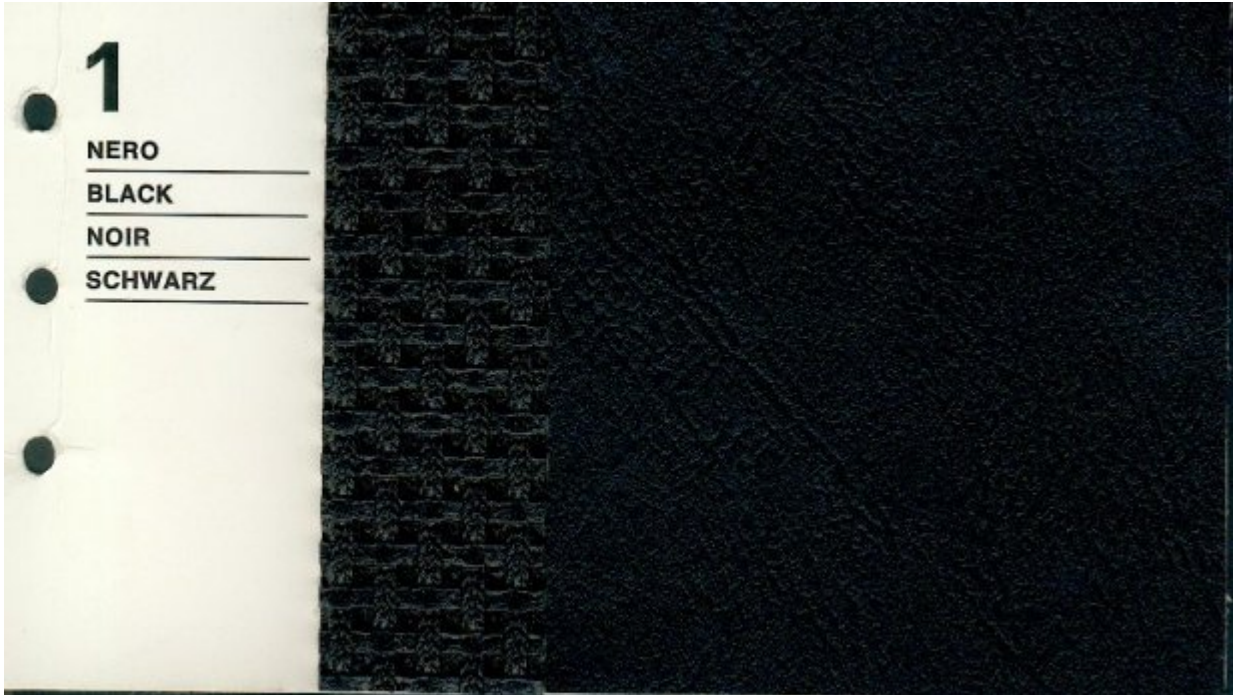
Interni in Texalfa, Pelle e Veluto / Interiors in Texalfa, Leather and Velvet / Interieurs en Texalfa, Cuir et Velours / Innen Kunstleder, Leder und Samtstoff



Interiors in Texalfa, Leather and Velvet: 1 - Nero

Color scheme: 1

Name (I/E/F/D): Nero / Black / Noir / Schwarz



Interiors in Texalfa, Leather and Velvet: 2 - Cinghiale Maremma

Color scheme: 2

Name (I/E/F/D): Cinghiale Maremma / Maremma Pigskin / Havane Foncé / Wildschweinbraun

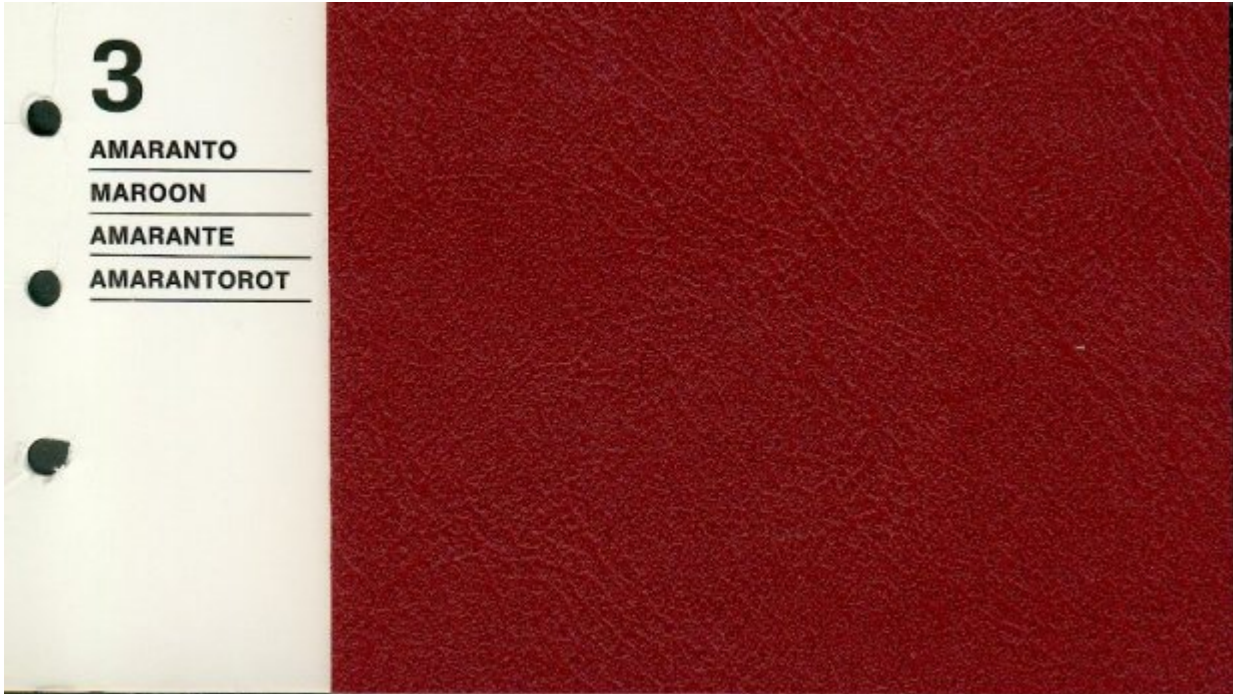
Note: "Maremma" means "marsh" or "swamp" and "Cinghiale " means "wild boar".
Interestingly, the French name means something completely different ("cinghiale" translates to "sanglier").



Interiors in Texalfa, Leather and Velvet: 3 - Amaranto

Color scheme: 3

Name (I/E/F/D): Amaranto / Maroon / Amarante / Amarantorot



Interiors in Texalfa, Leather and Velvet: 4 - Nero

Color scheme: 4

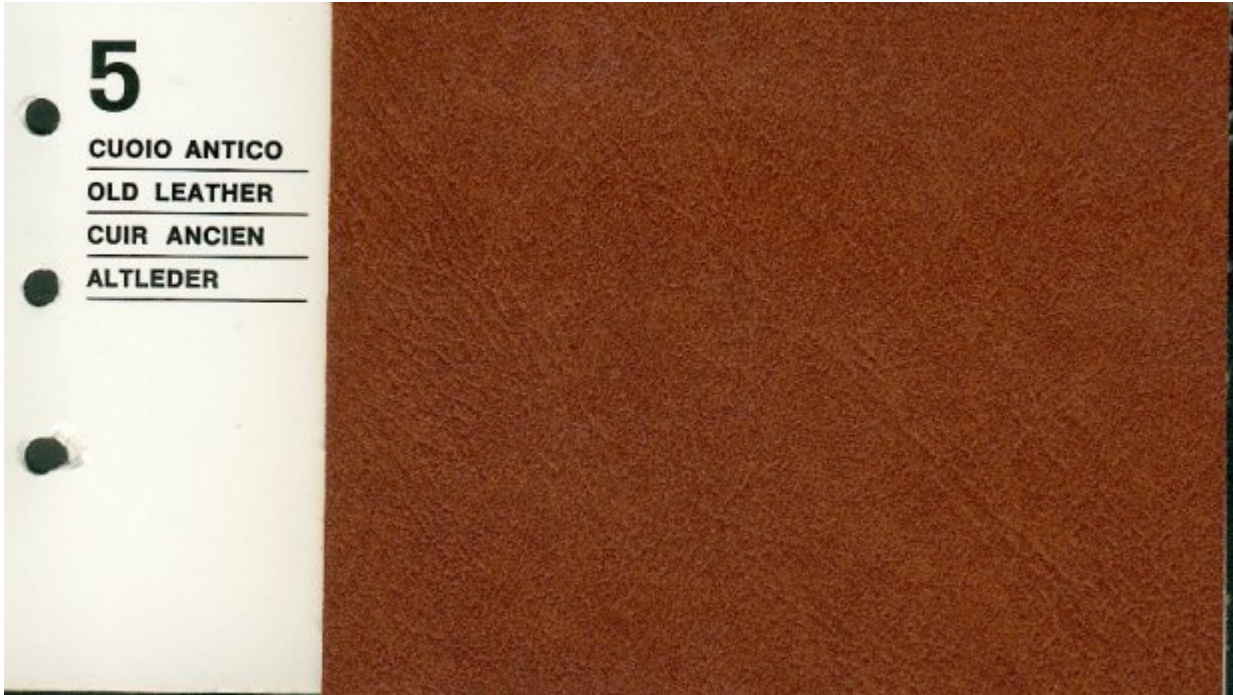
Name (I/E/F/D): Nero / Black / Noir / Schwarz



Interiors in Texalfa, Leather and Velvet: 5 - Cuoio Antico

Color scheme: 5

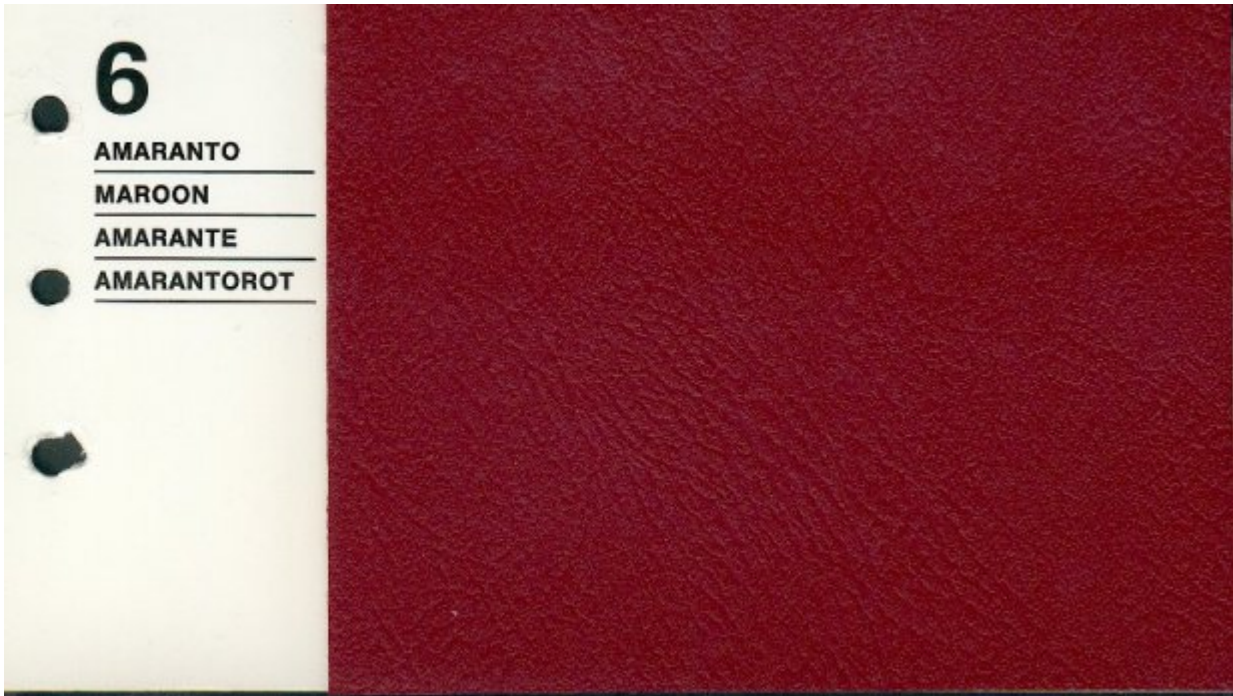
Name (I/E/F/D): Cuoio Antico / Old Leather / Cuir Ancien / Altleder



Interiors in Texalfa, Leather and Velvet: 6 - Amaranto

Color scheme: 6

Name (I/E/F/D): Amaranto / Maroon / Amarante / Amarantorot



Interiors in Texalfa, Leather and Velvet: 7 - Marrone Cuoio

Color scheme: 7

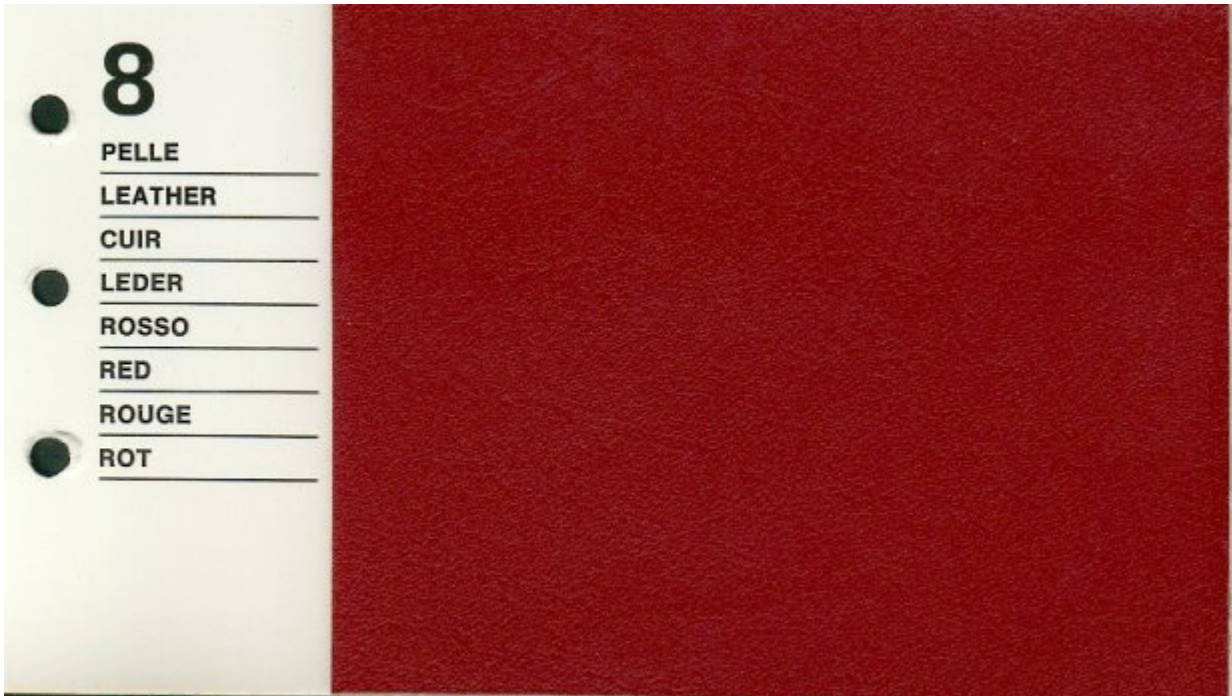
Name (I/E/F/D): Marrone Cuoio / Brown / Marron / Kastanienbraun



Interiors in Texalfa, Leather and Velvet: 8 - Pelle Rosso

Color scheme: 8

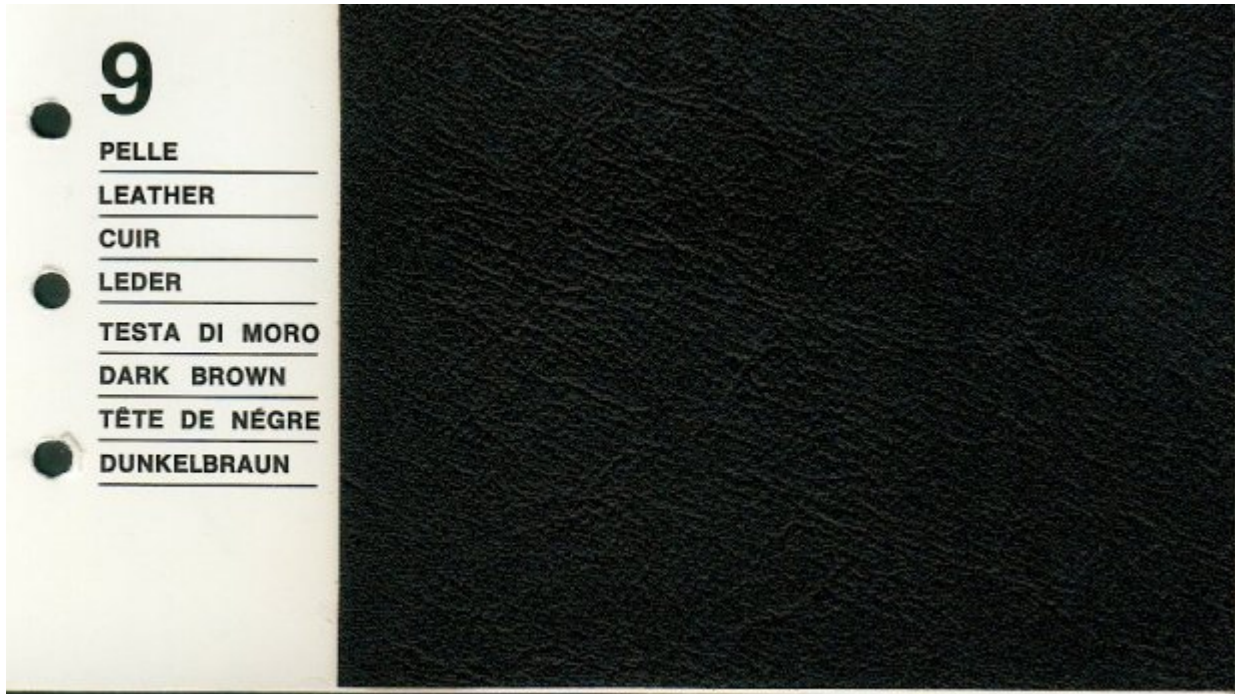
Name (I/E/F/D): Pelle Rosso / Red Leather / Cuir Rouge / Rotes Leder



Interiors in Texalfa, Leather and Velvet: 9 - Pelle Testa di Moro

Color scheme: 9

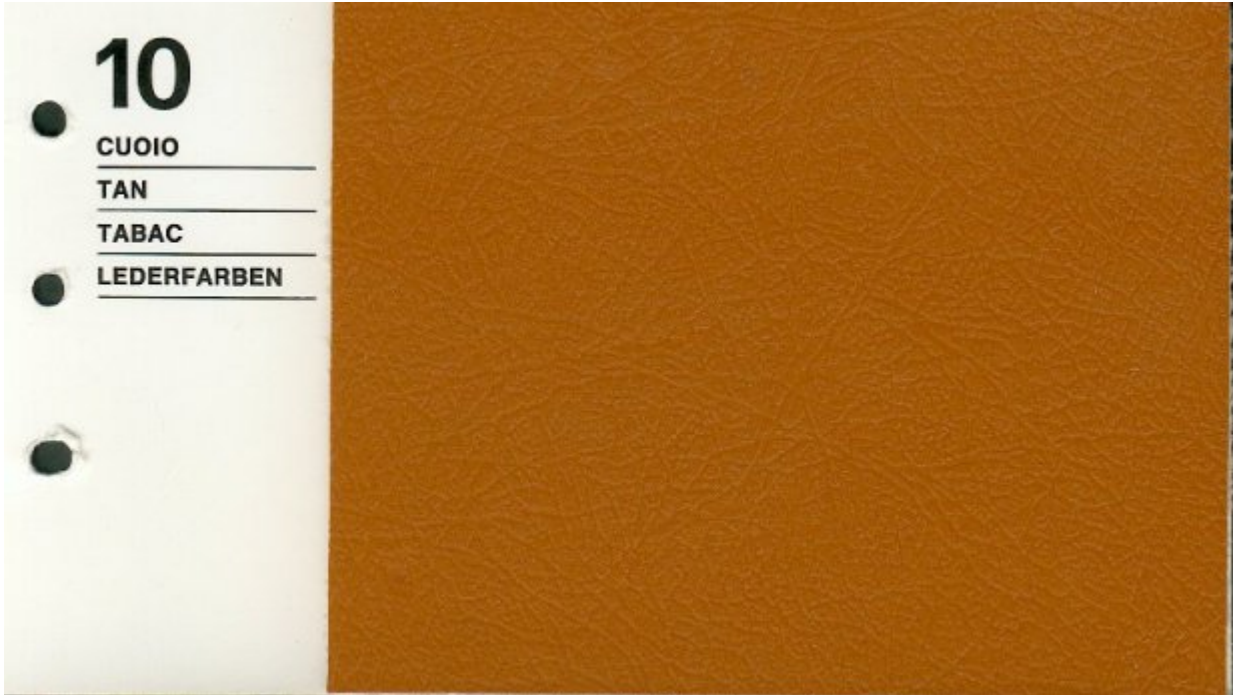
Name (I/E/F/D): Pelle Testa di Moro / Dark Brown Leather / Cuir Tête de Nègre / Dunkelbraun



Interiors in Texalfa, Leather and Velvet: 10 - Cuoio

Color scheme: 10

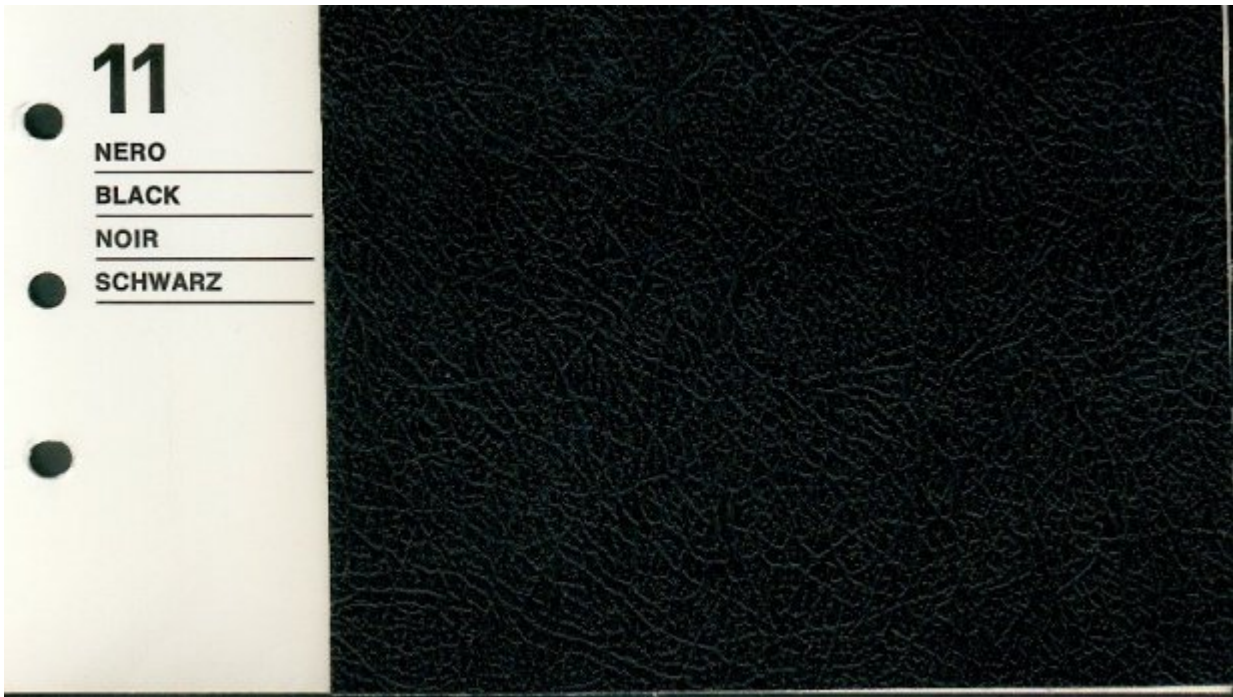
Name (I/E/F/D): Cuoio / Tan / Tabac / Lederfarben



Interiors in Texalfa, Leather and Velvet: 11 - Nero

Color scheme: 11

Name (I/E/F/D): Nero / Black / Noir / Schwarz



Interiors in Texalfa, Leather and Velvet: 12 - Cinghiale Maremma

Color scheme: 12

Name (I/E/F/D): Cinghiale Maremma / Maremma Pigskin / Havane Foncé / Wildschweinbraun

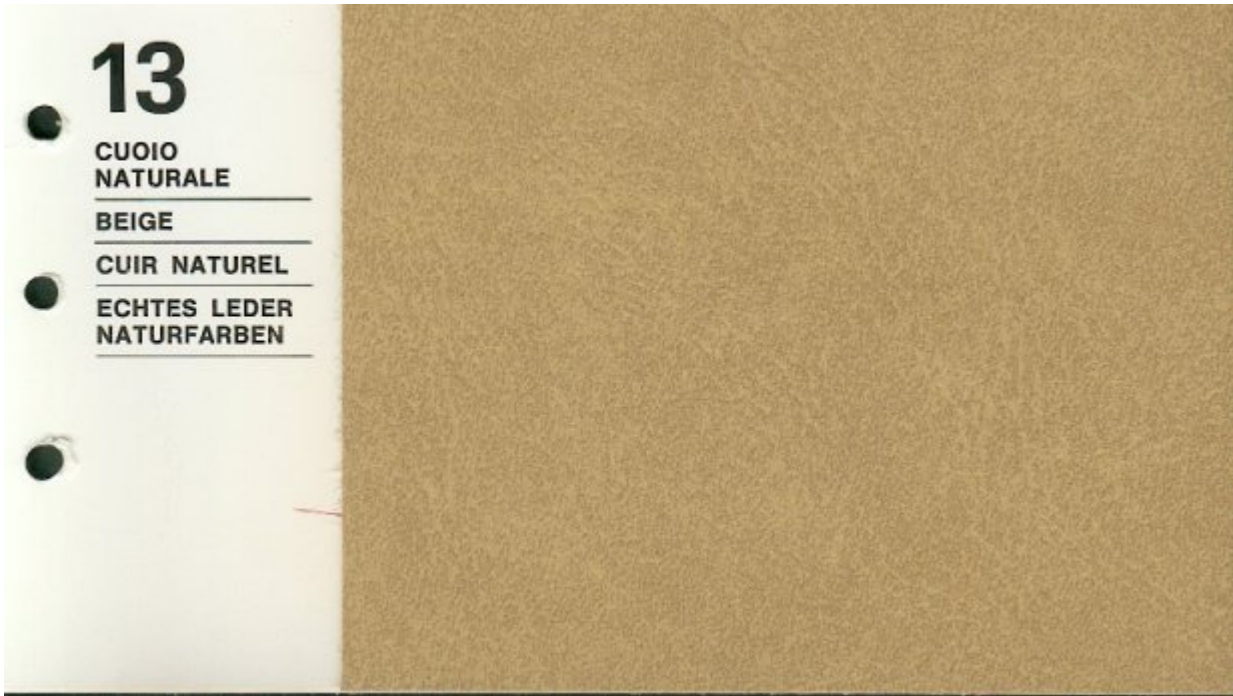
Note: "Maremma" means "marsh" or "swamp" and "Cinghiale " means "wild boar".
Interestingly, the French name means something completely different ("cinghiale" translates to "sanglier").



Interiors in Texalfa, Leather and Velvet: 13 - Cuoio Naturale

Color scheme: 13

Name (I/E/F/D): Cuoio Naturale / Beige / Cuir Naturel / Echtes Leder Naturfarben

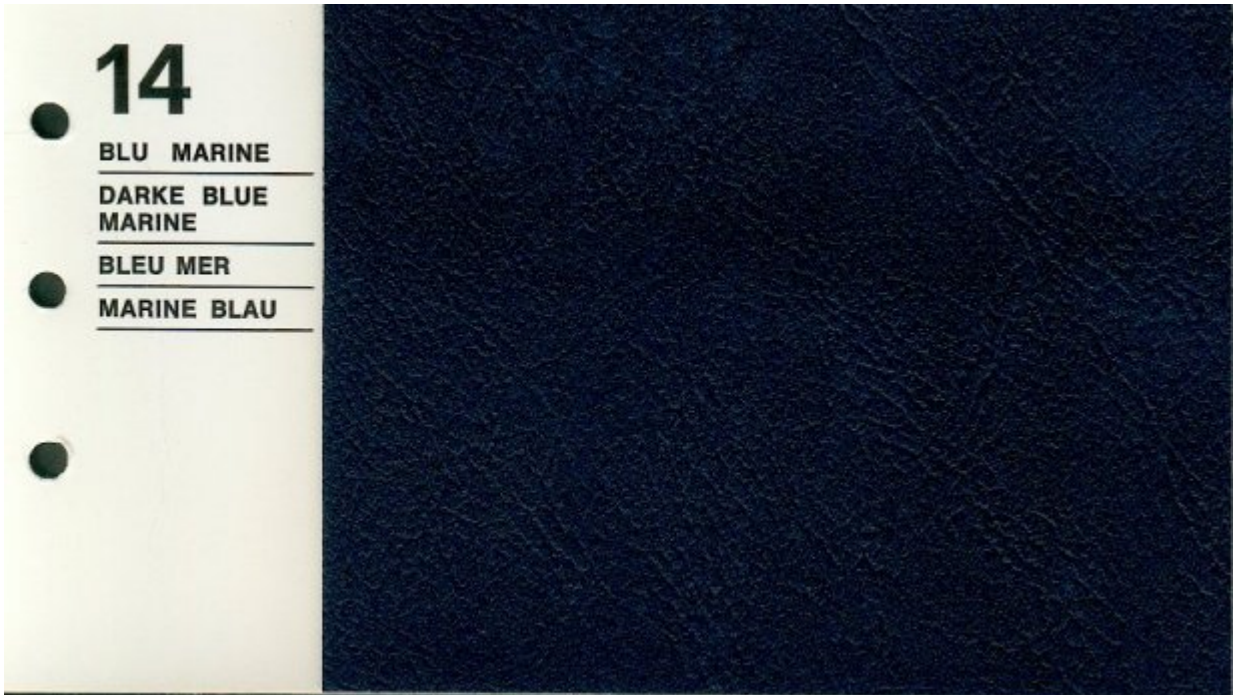


Interiors in Texalfa, Leather and Velvet: 14 - Blu Marine

Color scheme: 14

Name (I/E/F/D): Blu Marine / Dark Blue Marine / Bleu Mer / Marine Blau

Note: Color schemes 14 and 15 have the same names.



Interiors in Texalfa, Leather and Velvet: 15 - Blu Marine

Color scheme: 15

Name (I/E/F/D): Blu Marine / Dark Blue Marine / Bleu Mer / Marine Blau

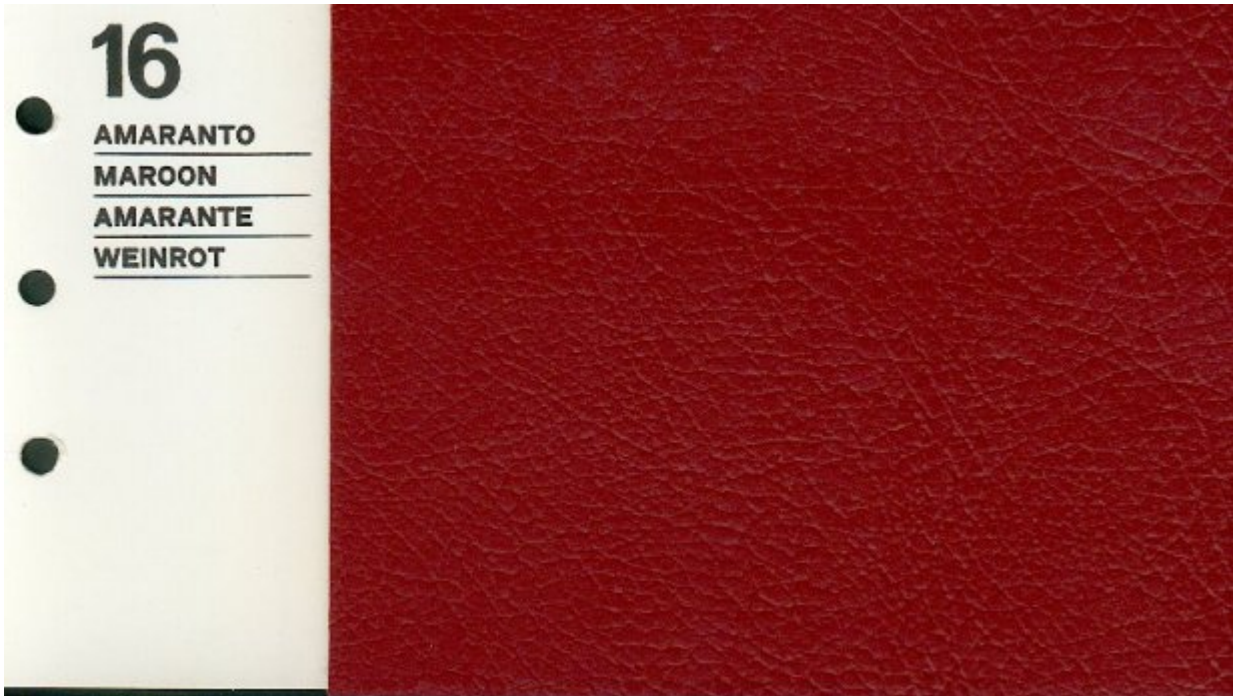
Note: Color schemes 14 and 15 have the same names.



Interiors in Texalfa, Leather and Velvet: 16 - Amaranto

Color scheme: 16

Name (I/E/F/D): Amaranto / Maroon / Amarante / Amarantorot



Interiors in Texalfa, Leather and Velvet: 17 - Blu

Color scheme: 17

Name (I/E/F/D): Blu / Blue / Bleu / Blau



Interiors in Texalfa, Leather and Velvet: 18 - Nero

Color scheme: 18

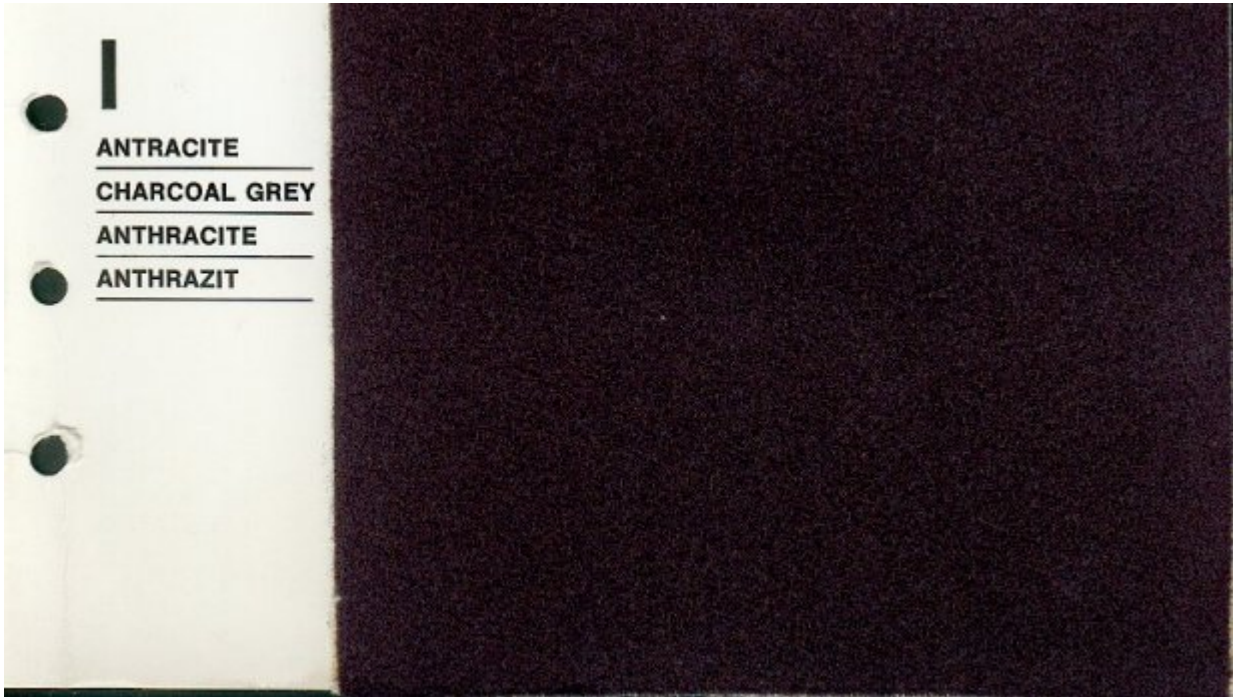
Name (I/E/F/D): Nero / Black / Noir / Schwarz



Interiors in Texalfa, Leather and Velvet: I - Antracite

Color scheme: I

Name (I/E/F/D): Antracite / Charcoal Grey / Anthracite / Anthrazit



Interiors in Texalfa, Leather and Velvet: II - Nocciola

Color scheme: II

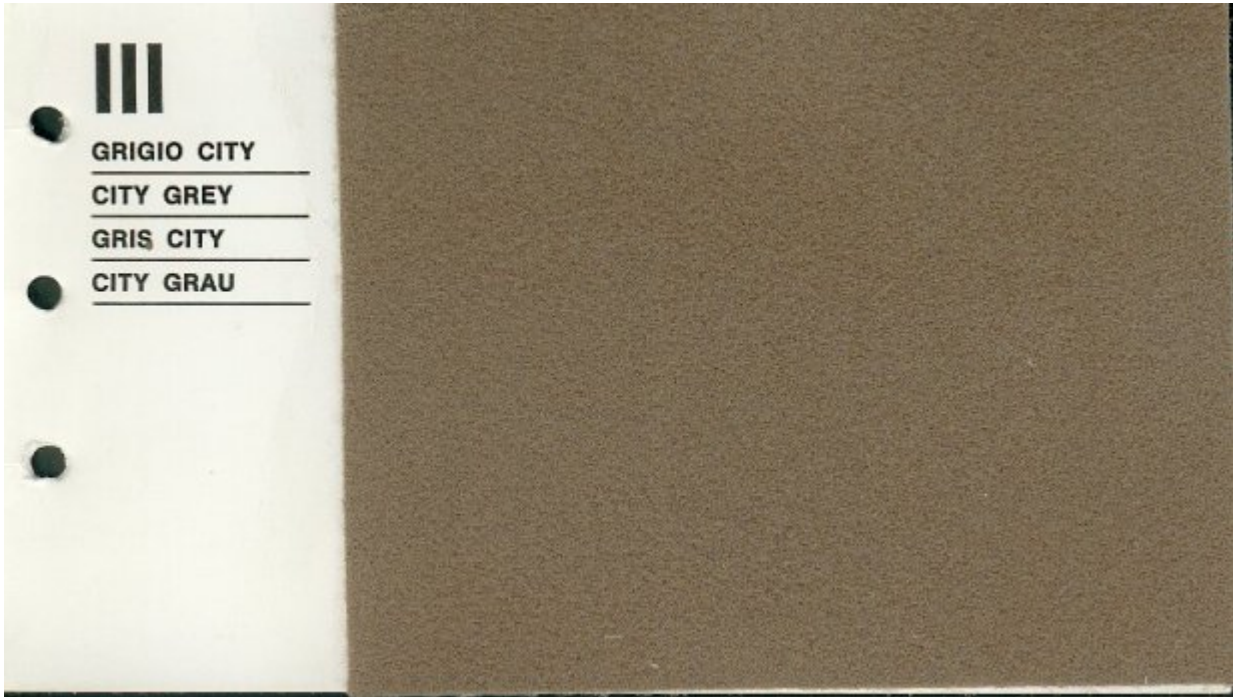
Name (I/E/F/D): Nocciola / Nut Brown / Noisette / Haselnuss



Interiors in Texalfa, Leather and Velvet: III - Grigio City

Color scheme: III

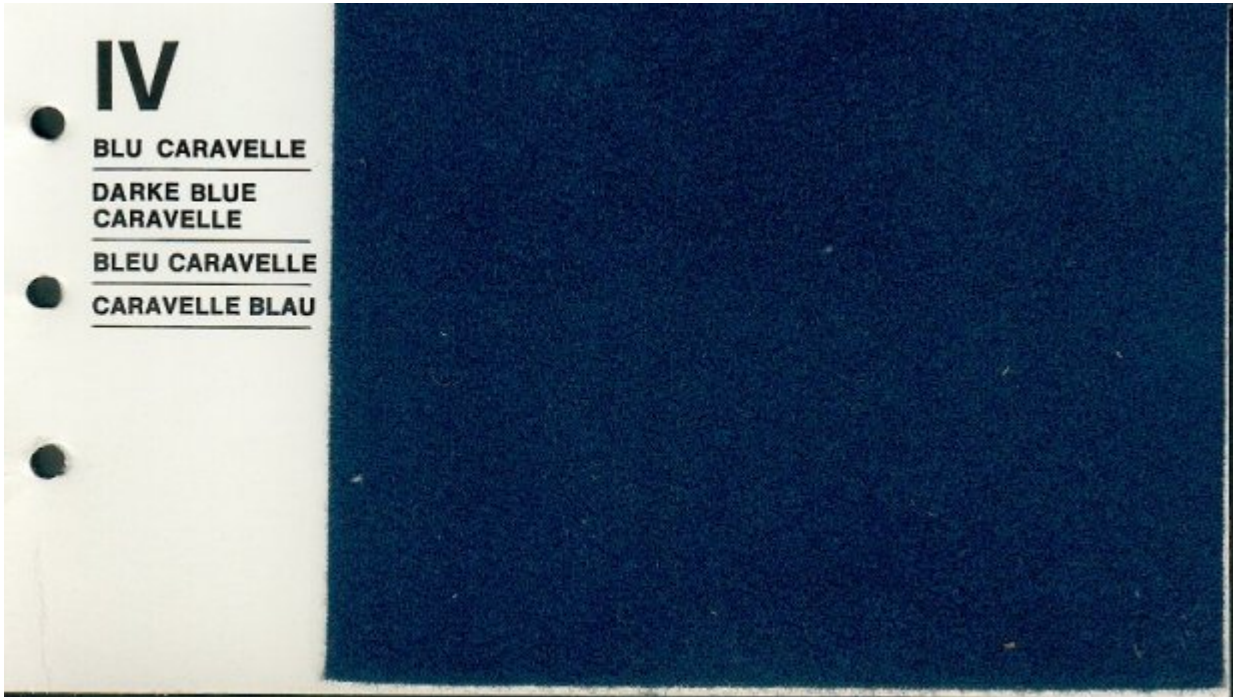
Name (I/E/F/D): Grigio City / City Grey / Gris City / City Grau



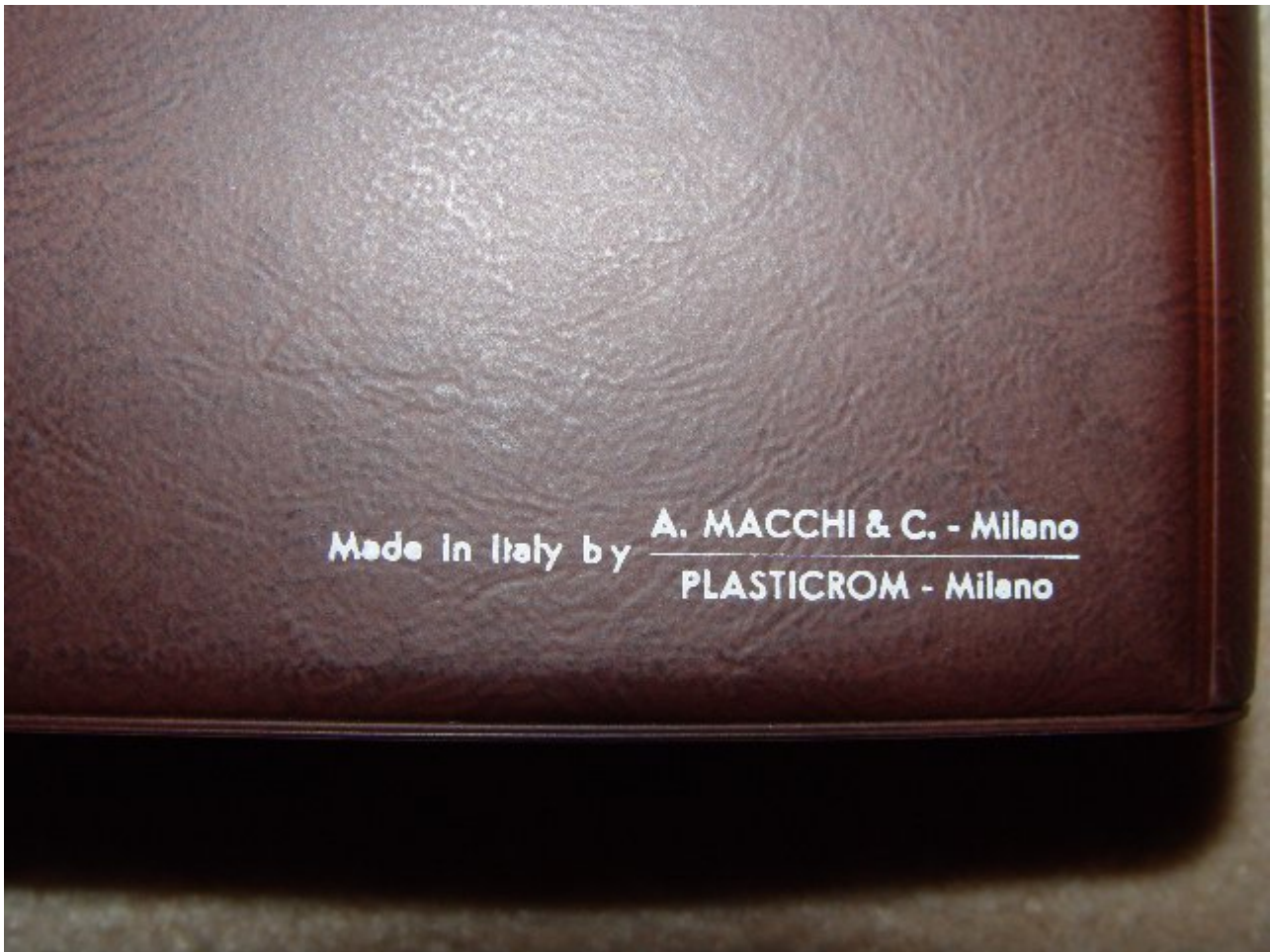
Interiors in Texalfa, Leather and Velvet: IV - Blu Caravelle

Color scheme: IV

Name (I/E/F/D): Blu Caravelle / Dark Blue Caravelle / Bleu Caravelle / Caravelle Blau



The back cover:



The Alfa Romeo steel wheel color is BMW Polaris Silver from the late 70's early 80's...

LINK DI RIFERIMENTO:

- STANDOX -

servizio tintometrico:

<http://www.sxcolor.info/scripts/colorinfo.dll/getpage>

- GLASURIT -

Servizio tintometrico:

<http://www.it.glasurit.com/COLOR/COLOR-Search/index.html>

Difetti-Cause e Rimedi:

<http://www.it.glasurit.com/Service/AdviceOnPaintDefects/>

- AUTOCOLORLIBRARY -

Elenco cartelle colore divise per anni e per case automobilistiche:

<http://www.autocolorlibrary.com/cgi-bin/search/search.pl>