

njtruckking.com  
856-693-3181  
1229 Broadway  
Westville, New Jersey  
08093

King of Cars and  
Trucks

## 2000 FORD F550 MASON PTO DUMP 7.3L DIESEL 6- SPEED 63K ORIGINAL MILES PTO

View this car on our website at [njtruckking.com/6526412/ebrochure](http://njtruckking.com/6526412/ebrochure)

ebay



Our Price **\$23,900**

**Specifications:**

**Year:** 2000  
**VIN:** 1FDAF56F0YEC48092  
**Make:** FORD F550 MASON PTO DUMP  
**Model/Trim:** 7.3L DIESEL 6-SPEED 63K ORIGINAL MILES PTO  
**Condition:** Pre-Owned  
**Body:** Pickup Truck  
**Exterior:** Red  
**Engine:** 7.3L (444) DI V8 TURBO-DIESEL ENGINE  
**Interior:** Gray  
**Mileage:** 63,074  
**Drivetrain:** Rear Wheel Drive

~~HARD TO FIND DUMP THAT IS IN AMAZING CONDITION !  
YOU WILL NOT FIND ONE BETTER !

2000 FORD F550 SUPERDUTY

~REG. CAB~

7.3L POWERSTROKE TURBO DIESEL

6-SPEED MANUAL TRANSMISSION (RARE)

( 63,074 ORIGINAL / ACTUAL MILES )

2-OWNER

OWNER DRIVEN / OPERATED!

METICULOUSLY MAINTAINED

12' PTO MASON DUMP

\*\* W/TARP \*\*

BEST COLOR COMBO

ALL THE OPTIONS !

ORIGINAL OWNERS MANUALS

THIS TRUCK IS IN EXCELLENT CONDITION !

YOU WILL NOT FIND A NICER USED DUMP ANYWHERE IN THIS PRICE RANGE!

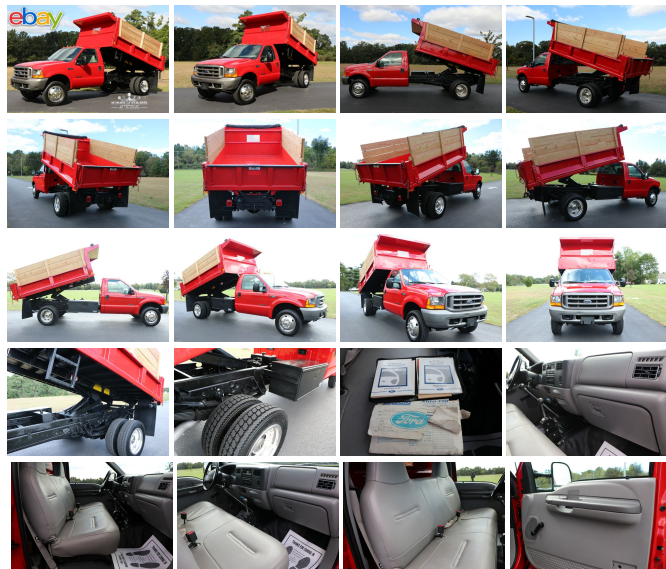
WHY SPEND 80K ON A NEW TRUCK WHEN YOU CAN OWN THIS FOR A 1/4 OF THAT !?!?

WILL NOT LAST !

BEST OF THE BEST

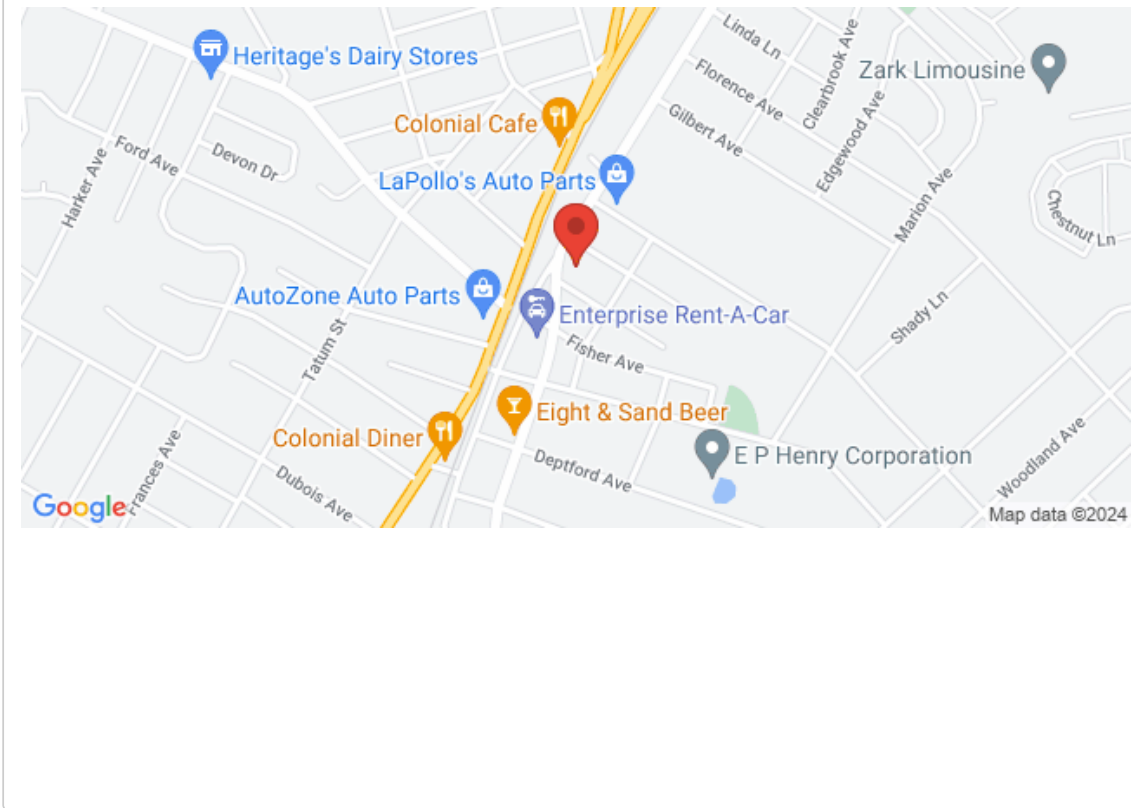
DON'T SNOOZE AND LOSE BECAUSE YOU WILL NOT FIND ANOTHER LIKE IT !

\$23,900



2000 FORD F550 MASON PTO DUMP 7.3L DIESEL 6-SPEED 63K ORIGINAL MILES PTO  
King of Cars and Trucks - 856-693-3181 - View this car on our website at [njtrucking.com/6526412/ebrochure](http://njtrucking.com/6526412/ebrochure)

**Our Location :**



2000 FORD F550 MASON PTO DUMP 7.3L DIESEL 6-SPEED 63K ORIGINAL MILES PTO  
King of Cars and Trucks - 856-693-3181 - View this car on our website at [njtrucking.com/6526412/ebrochure](http://njtrucking.com/6526412/ebrochure)

## Installed Options

### Interior

- Electronic AM/FM stereo-inc: digital clock, dual door-mounted speakers
- HD vinyl bench seat w/outboard seating position integral headrests
- (4) air registers w/positive shut-off- 11.5" day/night rearview mirror- Auxiliary pwr point
- Black vinyl full floor covering- Black vinyl steering wheel- Cigar lighter
- Color-keyed door trim panel-inc: hard armrest, grab handle, reflector
- Color-keyed instrument panel w/dual cupholders- Color-keyed molded cloth headliner
- Color-keyed scuff plates- Dual front color-keyed coat hooks
- Front door operated dome lamp w/time delay off- Front passenger assist handle
- Gray fabric back panel cover- Inside hood release
- Instrumentation-inc: tachometer, voltmeter, trip odometer, oil pressure/ coolant temp/fuel gauges, indicator lights
- Vinyl sun visors

### Exterior

- Argent grille- Argent painted front bumper- Black door handles
- Black manual fold away trailer tow mirrors- Fixed interval wipers- Roof clearance lights
- Sealed beam halogen headlights- Solar tinted glass

### Safety

- Electronic AM/FM stereo-inc: digital clock, dual door-mounted speakers
- HD vinyl bench seat w/outboard seating position integral headrests
- (4) air registers w/positive shut-off- 11.5" day/night rearview mirror- Auxiliary pwr point
- Black vinyl full floor covering- Black vinyl steering wheel- Cigar lighter
- Color-keyed door trim panel-inc: hard armrest, grab handle, reflector
- Color-keyed instrument panel w/dual cupholders- Color-keyed molded cloth headliner
- Color-keyed scuff plates- Dual front color-keyed coat hooks
- Front door operated dome lamp w/time delay off- Front passenger assist handle
- Gray fabric back panel cover- Inside hood release
- Instrumentation-inc: tachometer, voltmeter, trip odometer, oil pressure/ coolant temp/fuel gauges, indicator lights
- Vinyl sun visors

### Mechanical

- (6) 19.5" x 6.0" steel wheels - (6) 225/70R19.5F all-season SBR BSW tires
- 4-speed electronic automatic transmission w/OD- 6.8L (415) SOHC SEFI V10 engine
- Pwr 4-wheel anti-lock disc brakes- (2) front tow hooks- 11,420# maximum payload
- 141" WB
- 17,500# GVWR (5600 front/13,500 rear), springs (5600 front/13,500 rear), axles (6000 front/13,500 rear)
- 4.88 rear axle ratio- 40 gallon fuel tank-inc: auxiliary fuel tap - 7-pin trailer tow wiring
- 78 amp/hr (750 CCA) maintenance-free battery- 95 amp alternator- Front stabilizer bar
- HD gas shock absorbers- Mono-beam front axle- Pwr steering- Rear wheel drive

## Option Packages

### Factory Installed Packages

---

7.3L (444) DI V8 TURBO-DIESEL ENGINE	
-inc: 6000# front axle/springs, 130 amp alt, dual 78 amp/hr batteries, engine block heater, exhaust back pressure valve	\$4,250

---

Option Packages Total	\$4,250
-----------------------	---------

King of Cars and Trucks

[njtruckking.com](http://njtruckking.com)

856-693-3181

1229 Broadway

Westville, New Jersey 08093

© 2024 AutoRevo - All rights reserved. - Powered by AutoRevo