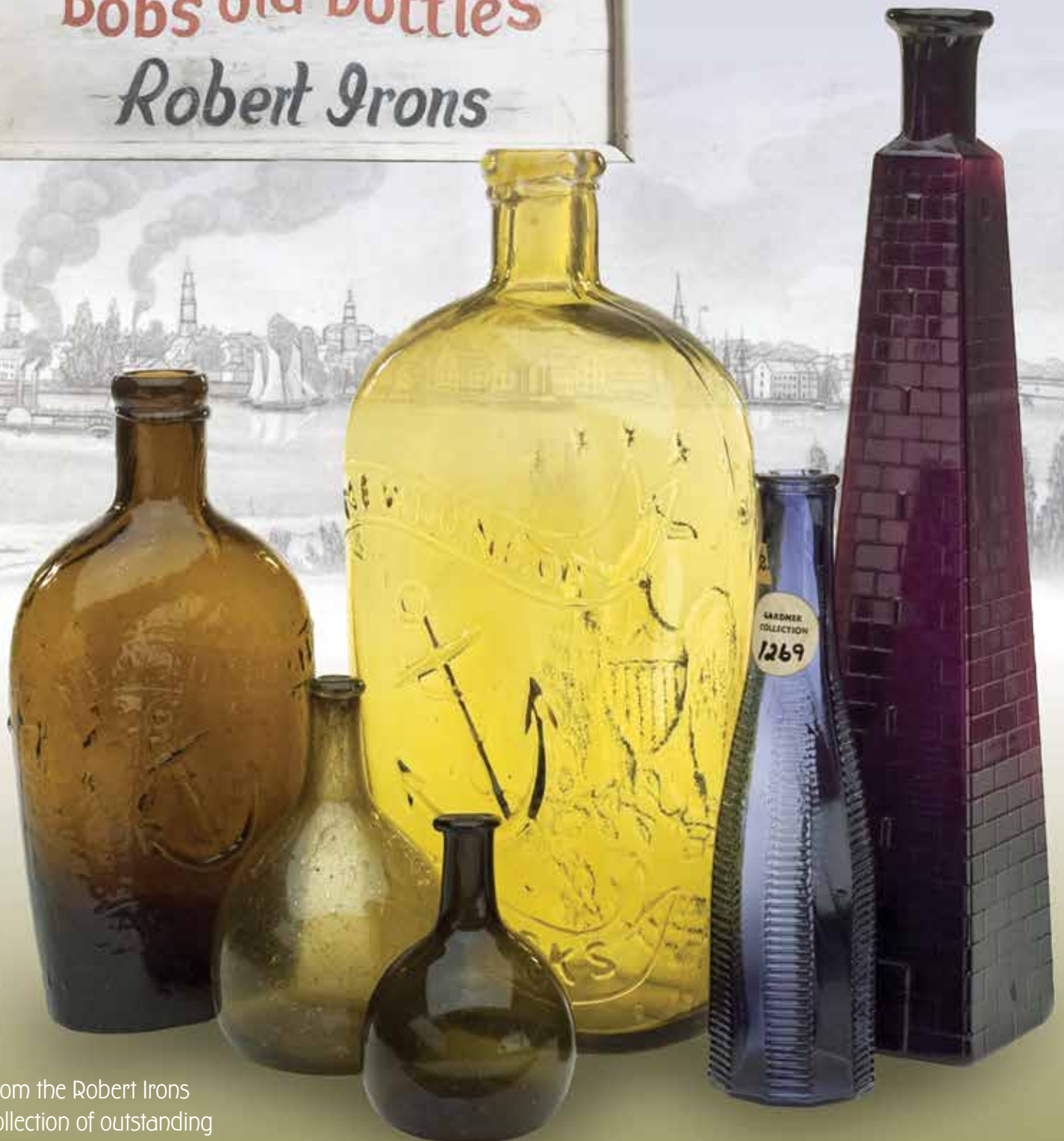


# American Glass Gallery™

Auction 29

Opens July 19, 2021 • Closes July 27, 2021

Bob's old Bottles  
Robert Irons



From the Robert Irons  
collection of outstanding  
New England bottles & flasks

Left to Right: Lots 20, 54, 53, 12, 81, 80

# Conditions of Sale: Auction #29

## 1. Absentee Auction

The items in this sale will be sold via absentee auction.  
Closing date: **Tuesday, July 27, 2021, 11:00 p.m., EST.**

## 2. Our Guarantee Regarding Descriptions

American Glass Gallery has made every attempt to describe correctly the property being sold. Descriptions are guaranteed to be accurate as regards authenticity, age, condition, and measurements to within one-fourth inch, as represented in this catalog. Items in this catalog are not shown to scale. In describing damage, exterior wear or manufacturer's flaws that in our opinion, do not significantly detract visually or monetarily from the value of the item are not listed and will not be considered for refund. The Auctioneers reserve the right to make verbal corrections and provide additional information at any time during the sale.

## 3. Preview

Items may be viewed by appointment from **July 19, 2021** through **July 26, 2021.**

## 4. Bidding Procedure

You may submit your bids by mail, phone, FAX, email or through our on-line auction site. If bidding by mail or FAX, please fill out the absentee form and return it to us. Your bid, either written or oral, grants American Glass Gallery the authority to protect you up to the amount of your stated bid. Your bid will not be removed once executed.

**Bidding Times:** You can submit your bids anytime after receiving your catalog. Bids may be made by phone, daily, until closing day, **July 27, 2021**, from 9 A.M. - 6 P.M. Eastern Time. Incoming phone bids will be accepted on the closing day (**July 27, 2021**) until 11 P.M. Eastern Time. Phone calls and Fax bids after this time will not be honored. No exceptions. You may also place your bids through our on-line auction service 24-hours a day once the site has opened for bidding, on or about **July 19, 2021**, continuing until 11:00 P.M. Eastern Time, **July 27, 2021.**

**Please do not wait until the last day or two of the sale to place your bids!** Because many collectors wait until the final few days of the sale to place their bids, we anticipate the telephone and internet bidding to be very busy during that period, so please plan accordingly. In the event of a tie bid, the earliest received bid on the lot will take precedent. We would welcome your bids by phone so that we can answer any questions and assist you in your bidding.

You may also telephone us at any time during the auction, prior to the closing of the sale, to check the status of your bids, to find the current bidding level, to open a bid, or to raise a bid on an auction lot.

### Bidding Increments are as follows:

Up to \$250.00.....	increments of \$10.00
\$250.00 - \$500.00 .....	increments of \$25.00
\$500.00 - \$1,000.00 .....	increments of \$50.00
\$1,000.00 - \$2,500.00 .....	increments of \$100.00
\$2,500.00 - \$5,000.00 .....	increments of \$250.00
\$5,000.00 - \$10,000.00 .....	increments of \$500.00
\$10,000 & Up.....	increments of \$1,000.00

Bids submitted between the above increments, whether by mail, FAX, email or on-line via the internet, will automatically be lowered to the closest lower increment.

This is a minimum bid auction. Bids below the printed minimum will not be accepted.

**An example of how our absentee bidding system works:** You bid \$1000.00 on a lot which is the highest bid received to date. The second highest bid is \$800.00. The current high bid level would be yours at \$850.00, one bid increment higher than the other collector's bid. Any additional bids submitted by others below \$1000.00 will automatically be topped on your behalf by a representative of American Glass Gallery, up to your stipulated high bid amount. If no further bids on this lot are received beyond the \$800.00, and the under bidder has not requested a "Call Back", then you would have won the lot at \$850.00, not the \$1000.00 that you were prepared to pay.

American Glass Gallery will at NO TIME disclose bids pledged by others; only the current "High Bid" level of a lot will be stated upon request. The highest bidder as determined by American Glass Gallery shall be the purchaser. It is the sole right of the auctioneer to settle any dispute between bidders and to regulate the bidding procedure. The auctioneer reserves the right to refuse any bid he believes not to have been made in good faith.

## 5. "Call Back" Process

If requested, the three top bidders of an item at the time of closing will be given a "Call Back" over the next number of days in order to resolve the final sale of an item. You can request this service by "checking" the appropriate box on your absentee bid form or verbal agreement by phone. It is the responsibility of the bidder to insure he has qualified for this service.

**Please note: No "Call Backs" will be executed for bids under \$800.00. In the event of tie bids, the earliest bid received will be the winning bid.**

An example of how the "Call Back" process works: As an example, you have bid \$800.00 on a particular lot. Another bidder has submitted a bid of \$1000.00 on the same lot. Assuming that as of the auction closing date you are among the top three bidders on this lot and you have requested a "Call Back", you would receive a call informing you that you have been "Out Bid" and the current "High Bid" is now at \$850.00. If you choose to continue bidding on this lot, you may now do so. Assuming that you now increase your bid to \$900.00, we would accept your bid but also inform you that we have a higher bid on this lot and must bid \$950.00. At this time, an auction between you and American Glass Gallery, representing the collector who submitted the bid of \$1000.00, takes place. This bidding would continue until you drop out, or top the other bidders high bid of \$1000.00. If the other bidder has not requested a "Call Back" service, you would be awarded the lot. If however, the other bidder also requested a Call Back, we must now call them. If they elect to increase their bid over your high bid, we would in turn call you back. This back and fourth process would continue until one of the bidders declines to go any farther.

If you have requested a "Call Back", the auctioneers will need to contact you on the days immediately following the auction closing between the hours of 8 A.M. and 9 P.M. Eastern Time. Please supply us with all appropriate contact phone numbers including, home, mobile and work numbers. Bidders must provide the appropriate telephone numbers where they can be contacted. If you will be traveling or otherwise unavailable, bidders with "Call Back" privileges will have the responsibility to contact American Glass Gallery twice daily during the Call Back period.

**Please note,** every effort will be made to contact you during the "Call Back" period. However, the bidder will forfeit their rights to a "Call Back" if the auctioneers are unable to reach them. American Glass Gallery reserves the right to discontinue Call Backs on any item in the sale (2) two days after the closing date of the sale. At that time, the current "High Bidder" may be awarded the item even if Call Backs are still outstanding.

# Conditions of Sale: Auction #29

## 6. Terms

**Successful Bidders,** Prompt and full payment is due immediately upon receipt of our invoice. Absolutely no exceptions. Anyone failing to pay for items won will forfeit all rights to bid in any future American Glass Gallery sales. **Any late or delayed payments may result in loss of return privileges for items purchased in the sale.**

**No Items Will Be Mailed Before Full Payment Is Received.**

**Buyer Premium:** Our buyer premium remains unchanged. **It is 15% if paying by cash or check, discounted from 18% if paying by Credit Card or PayPal** (PayPal payment account: jpastor@americanglassgallery.com). This buyer premium will be added to the hammer price as part of the purchase price. For example, if you purchase a lot for \$100.00, you will receive an invoice for \$115.00 if paying by cash, check or money order, plus any applicable sales tax or shipping charges.

**Taxes:** If you are a Michigan resident, a 6% sales tax will be added to your bill unless you have a valid resale number registered with us.

**Shipping:** Shipping, handling and insurance are extra. We ship insured via U.S. Mail or UPS. These charges will be added to your bill unless the lots are picked up in person. Oversize packages (boxes with dimensions over 12"), may incur additional shipping charges based on the postal zone of destination. Our charges for shipping (excluding foreign shipments and oversized lots) are \$18.00 for the first item, \$9.00 for each additional item together with extra insurance costs (we use current U.S. Postal Service insurance rates).

*Please allow two to three weeks for delivery after receipt of your check.*

**Payment:** American Glass Gallery accepts Cash, Money Orders, Personal Checks, Visa, MasterCard, American Express and PayPal. **If paying by Credit Card or PayPal, an additional 3% will be added to the invoice total.**



## 7. Refunds

Refunds will be given at the discretion of the Auctioneers. Items purchased must be examined and request for refund made immediately upon receipt of the item or items. Since opinions can differ, particularly in the matter of condition, the Auctioneers will be the sole judge in the consideration of refunds. Refunds requested on the grounds of authenticity must be made within 15 days of the date of the auction, and such refund requests must be accompanied by at least one supporting statement in writing from an authority recognized by the Auctioneers. It is the Auctioneers sincere intention to consider any reasonable request for a refund. **Absolutely no returns for any reason after 30 days following the closing of the sale.**

## 8. Bidding on any item indicates your acceptance of these terms.



American Glass Gallery™

**John R. Pastor**  
**P.O. Box 227**  
**New Hudson, Michigan 48165**  
**Phone: 248.486.0530**  
**Fax: 248.486.0538**  
**www.americanglassgallery.com**  
**email: jpastor@americanglassgallery.com**

## PLEASE NOTE:

*The lots offered in this printed catalog are identical to the lots offered in the on-line catalog. However, due to space constraints of the printed catalog, there may be some further information available regarding some of the lots in the on-line auction descriptions.*

*Please visit us at*

**[www.americanglassgallery.com](http://www.americanglassgallery.com)**

*and follow the link to the on-line auction.*

*The link and on-line auction will be available July 19, 2021. A post-auction price list will be available on our website, in printable form, approximately 30 days after the close of the auction.*

*We encourage you to contact us by phone or email with any questions, for assistance with bidding, or further details or clarification on any of the lots in this sale. Your complete satisfaction and confidence is our goal!*

**THANK YOU AND GOOD LUCK  
WITH YOUR BIDS!**

# Reference Key

Reference initials and numbers used in the description of this catalog refer to the following publications:

AHG	<i>American Historical Glass</i> , Bessie M. Lindsey, 1967.
AM	<i>The Decanter - An Illustrated History of Glass from 1650</i> , Andy McConnell, 2004.
AP	<i>Glass in Early America</i> , Arlene Palmer, 1993.
BA1	<i>Collecting The Cures</i> , Bill Agee, 1969.
BA2	<i>Collecting All Cures</i> , Bill Agee, 1973.
BB	<i>A Bit About Balsams</i> , Betty Blasi, 1974.
BH	<i>Classification and Documentation of Sunburst and Similar Scent Bottles</i> , Bill Ham, AB&GC, 5/87.
BJ	<i>American Pot Lids</i> , Barbara and Sonny Jackson, 1987.
B/K	<i>The Glass Industry in Sandwich</i> , Raymond Barlow and Joan Kaiser, 1989.
BPK	<i>A.M. BININGER Bottles</i> , Jim Bender, 2017
C	<i>Ink Bottles and Inkwells</i> , William Covill, 1971.
DB	<i>Antique Sealed Bottles, 1640 - 1900</i> , David Burton, 2015
DeG	<i>American Sarsaparilla Bottles</i> , John DeGrafft, 1980.
DeGII	<i>Supplement to American Sarsaparilla Bottles</i> , John DeGrafft, 2004.
DF	<i>Hair Raising Stories</i> , Don Fadely, 1992.
DM	<i>Wistarburgh, Window Tiles, Bottles and More</i> , Dale L. Murscell, 2007.
D/P	<i>Collector's Guide to Candy Containers</i> , Douglas M. Dezso, J. Leon and Rose Poirier, 1998.
F	<i>Inks, 150 Years of Bottles and Companies</i> , Ed and Lucy Faulkner.
FA	<i>John Frederick Amelung, Early American Glassmaker</i> , Lanmon, Palmer, Hume, Brill, Hanson, 1990.
FB	<i>A.S.C.R. The wine bottles of All Souls College</i> , Oxford, 1750 – 1850, Fay Banks.
G	(Flasks) <i>American Bottles &amp; Flasks and Their Ancestry</i> , McKearin & Wilson, 1978.
G	(Blown Three Mold) <i>American Glass</i> (Chapter VI), George S. and Helen McKearin, 1941.
GBH	<i>English Glass For The Collector, 1660-1860</i> , G. Bernard Hughes, 1958.
H	<i>American Bottles in the Charles B. Gardner Collection</i> , Norman C. Heckler, 1975.
JB	<i>Patent and Proprietary Medicine Bottles</i> , Joseph K. Baldwin, 1973
JEB	<i>Glasshouse Whimsies</i> , Joyce E. Blake, 1984.
JH	<i>Glasshouses &amp; Glass Manufacturers of the Pittsburgh Region, 1795 – 1910</i> , Jay W. Hawkins, 2009.
JM	<i>Tea Kettle Ink Price and Reference Guide</i> , Joe L. Mathews Jr., 2016
JS	<i>In glas verpakt – European Bottles, Their history and production</i> , Johan Soetens, 2001.
K	<i>Poison Bottle Workbook</i> , Rudy Kuhn, 1988.
KW	<i>New England Glass &amp; Glassmaking</i> , Kenneth M. Wilson, 1972.
L	<i>The Red Book of Fruit Jars, No. 11</i> , Douglas M Leybourne, Jr., 2014.
LI	<i>Pittsburgh Glass, 1797 – 1891</i> , Lowell Innes, 1976.
Mc	<i>Two Hundred Years of American Blown Glass</i> , Helen and George McKearin, 1950.
McK	<i>American Glass</i> , George S. and Helen McKearin, 1941.
MW	<i>American Bottles &amp; Flasks and Their Ancestry</i> , McKearin & Wilson, 1978.
N	<i>Great American Pontiled Medicines</i> , Frederick Nielson, 1978.
NCH	<i>The Blaske Collection of American Flasks</i> , Norman C. Heckler, 1983.
NCH II	<i>The Blaske Collection: Part II</i> , Norman C. Heckler, 1983.
Odell I	<i>Indian Bottles and Brands</i> , John Odell, 1977
Odell II	<i>Pontiled Medicine Encyclopdia</i> , John Odell, 2007
O&S	<i>Warner's Reference Guide</i> , Ed Ojea and Jack Stecher, 1998.
P	<i>The Glass Gaffers of New Jersey</i> , Adeline Pepper, 1971.
RD	<i>Understanding Antique Wine Bottles</i> , Roger Dumbrell, 1983.
RF	<i>The Bottle Book: A Comprehensive Guide to Historic, Embossed Medicine Bottles</i> , Richard Fike, 1987
RH	<i>Collecting Barber Bottles</i> , Richard Holiner, 1986.
R/H	<i>Bitters Bottles</i> , Carlyn Ring and W. C. Ham, 1998.
RWL	<i>Antique Fakes &amp; Reproductions</i> , Ruth Webb Lee, 1950
T	<i>Collectors Guide to Saratoga Type Mineral Water Bottles</i> , Donald Tucker, 2005.
V	<i>Nailsea Glass</i> , Keith Vincent, 1975
VdB	<i>Antique Glass Bottles; Their History and Evolution</i> , Willy Van den Bossche, 2001.
Z	<i>Ketchup, Pickles, Sauces</i> , Betty Zumwalt, 1980.
ZW	<i>Color Hutchinsons</i> , Zang Wood, 1999.

- The dash is generally used to indicate that the descriptions are on opposite sides of the bottle or flask.

/ The slash is used to indicate that the descriptions are on different lines or surfaces of the bottle.



Detail of Lot 13.

# Rare & Colorful New London Flasks from the Robert Irons Collection

The flasks shown here were all blown at the New London Glass Works which was founded in 1856 and remained in production for about nine years.

New London flasks come in many beautiful colors, from the more common aqua shades, to rarer copper-amber, olive-yellow, emerald-green, light green, pure yellow and cherry puce. Those shown here, and on the previous page, are truly outstanding examples.

New London, Connecticut was a port city located on the Thames River which became one of the world's busiest whaling ports for several decades, rivaling Nantucket and New Bedford, Massachusetts.



Lot 20

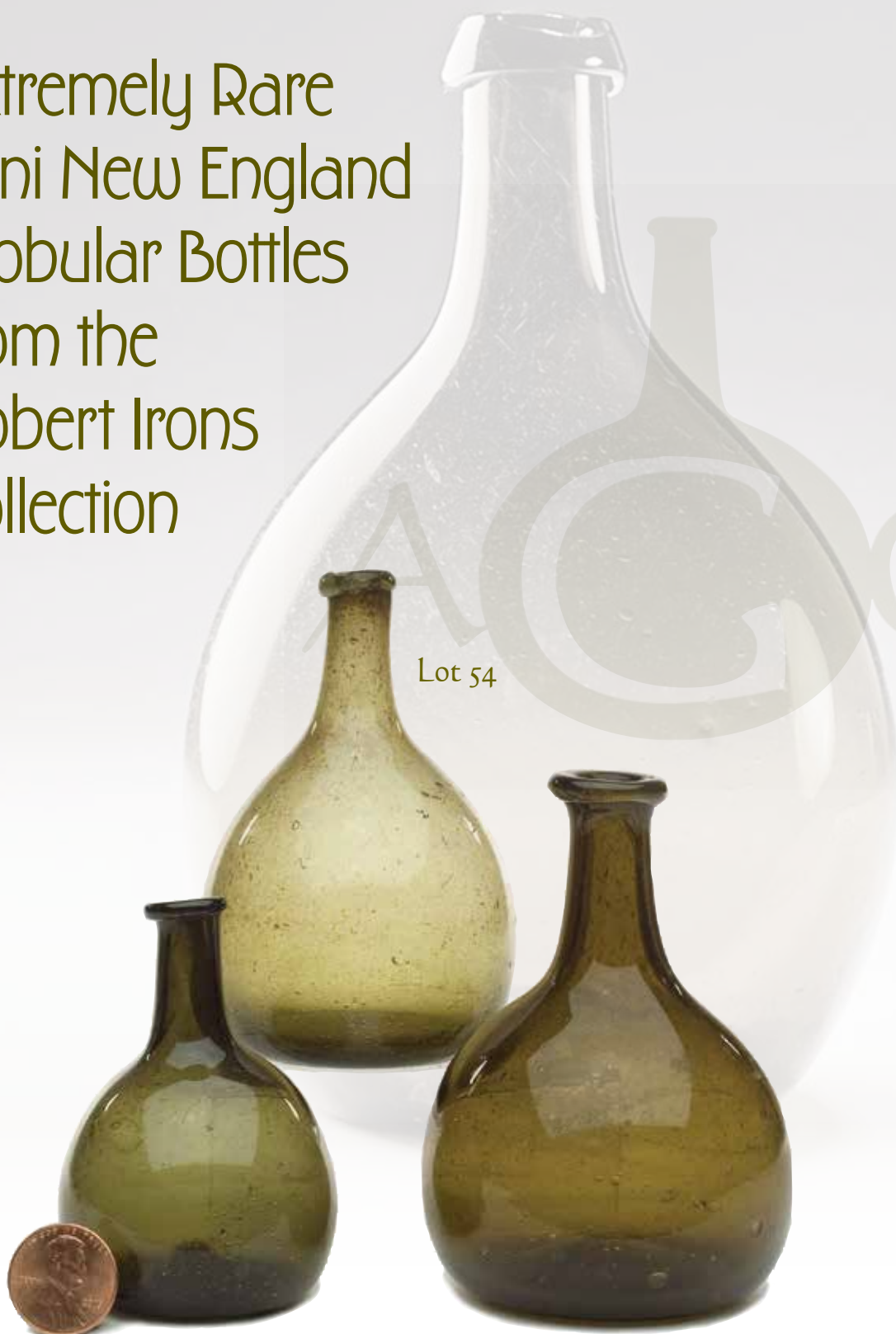
Lot 24

Lot 12

Lot 25

Lot 17

Extremely Rare  
Mini New England  
Globular Bottles  
from the  
Robert Irons  
Collection



Lot 54

Lot 53

Lot 55

---

# A Sampling of Rare & Colorful Hair Bottles from the Robert Irons Collection



Lot 255

Lot 254

Lot 260

Lot 247

Lot 248

Lot 249



Colored hair bottles were one of Bob Irons' favorite collecting categories and his award-winning displays always attracted a lot of attention.



Lot 250



Lot 266  
(1 of 2)

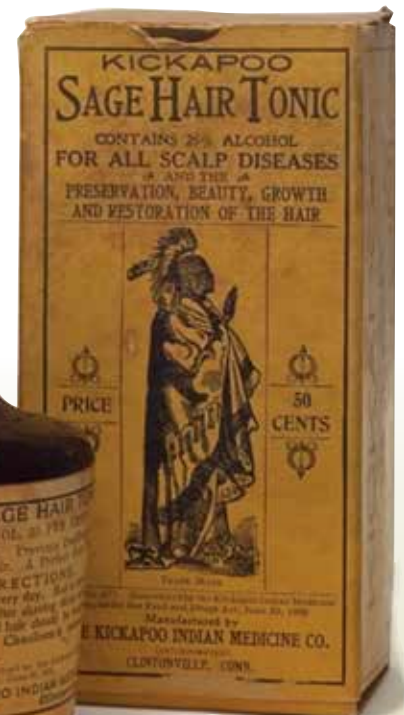


Lot 265  
(1 of 2)



Lot 264  
(1 of 2)

Lot 258



Lot 262



### Lot 1

**"GENERAL WASHINGTON" / BUST OF WASHINGTON - EAGLE Historical Flask**, an early Pittsburgh district glasshouse, 1825 - 1835. Greenish aquamarine, sheared mouth - blowpipe pontil scar, Pt; (a little faint iridescence or light haze in the shoulders, hardly noticeable, and a little minor high point wear, otherwise virtually perfect). GI-2. Scarce. The GI-2 represents an affordable opportunity to pick up one of the historic, early, beaded Washingtons. Strong mold impression.

*Est.: \$250 - \$450 • Min. bid: \$130*



### Lot 2

**Lot of (2), "THE FATHER OF HIS COUNTRY" / BUST OF WASHINGTON - "DYOTTVILLE GLASS WORKS PHILAD.A / GEN. TAYLOR NEVER SURRENDERS" / BUST OF TAYOR Historical Flasks**, 1848 - 1855. Both are aqua, applied square collar - smooth base, Qt. & Pt; (the Pt. has a 3/16" area of minor roughness on edge of lip, otherwise attic mint; Qt. has a little high point wear and some interior haze - mainly in the reverse, otherwise excellent). GI-37 & GI-38.

*Est.: \$100 - \$200 • Min. bid: \$50*



### Lot 3

**"THE FATHER OF HIS COUNTRY" / BUST OF WASHINGTON - "GEN. TAYLOR NEVER SURRENDERS" / BUST OF TAYLOR Historical Flask**, Dyottville Glass Works, 1848 - 1855. Deep bluish green, almost a teal coloration, sheared mouth - blowpipe pontil scar, Pt, near mint; (just a touch of minor wear, and a couple of shallow open surface bubbles). GI-40c. A rare mold with only a handful of examples offered at auction in the past 20 years. Good impression, beautiful color!

*Est.: \$1,200 - \$2,400 • Min. bid: \$600*



### Lot 4

**"THE FATHER OF HIS COUNTRY" / BUST OF WASHINGTON - "I HAVE ENDEAVOUR.D TO DO MY DUTY" / BUST OF TAYLOR Historical Flask**, Dyottville Glass Works, Philadelphia, 1848 - 1855. Brilliant clear yellowish green, sheared mouth - blowpipe pontil scar, Qt; (a couple of tiny open bubbles, otherwise pristine). GI-43. Beautiful color, outstanding character, the glass being filled with tiny bubbles, a bold, very strong impression, and almost no high point wear.

*Est.: \$1,200 - \$2,400 • Min. bid: \$600*



### Lot 5

**"LAFAYETTE" / BUST OF LAFAYETTE / "T.S." - "DE WITT CLINTON" / BUST OF CLINTON / "CONVENTRY / C-T" Historical Flask**, Coventry Glass Works, 1824 - 1830. Clear, light-to-medium yellowish olive, sheared mouth - pontil scar, Pt, very near mint; (only a slight trace of minor high point wear, and a touch of interior content residue, otherwise perfect). GI-80. Beautiful, pleasing light color and clarity, crude seedy, pebbly glass, excellent condition!

*Est.: \$800 - \$1,600 • Min. bid: \$400*



### Lot 6

**"LAFAYETTE" / BUST OF LAFAYETTE / "T.S." - "DE WITT CLINTON" / BUST OF CLINTON / "CONVENTRY / C-T" Historical Flask**, Coventry Glass Works, 1824 - 1830. Medium olive with an amber tone, sheared mouth - pontil scar, Pt; (some high point wear, primarily on the busts, and an open bubble in the neck with some trapped residue, a bit of dried content on the interior). GI-80. Excellent character, nice crude glass filled with tiny seed bubbles.

*Est.: \$600 - \$900 • Min. bid: \$300*



### Lot 7

**"LAFAYETTE" / BUST OF LAFAYETTE / "COVENTRY / C-T" - STARS AND LIBERTY CAP / "S & S" Historical Flask**, Coventry Glass Works, 1824 - 1830. Bright yellowish amber shading to a deeper amber with a slight golden tone through the neck and base, sheared mouth - pontil scar, Pt; (some high point wear; a shallow open bubble on the reverse, some chipping of the in-manufacture glass extrusion along one of the sides, and a shallow pontil flake at base edge). GI-85.

*Est.: \$500 - \$700 • Min. bid: \$250*



### Lot 8

**"LAFAYETTE" / BUST OF LAFAYETTE / "COVENTRY / C-T" - STARS AND LIBERTY CAP / "S & S" Historical Flask**, Coventry Glass Works, 1824 - 1830. Bright, light-to-medium yellowish olive amber, sheared mouth - blowpipe pontil scar, 1/2 Pt, near mint; (some typical light high point wear, otherwise perfect). GI-86. A beautiful example, nice light color, a great impression, eye-appealing crude glass, and fantastic condition.

*Est.: \$800 - \$1,200 • Min. bid: \$400*



### Lot 9

**EAGLE / "MY COUNTRY" - "FOR PIKES PEAK" / PROSPECTOR Historical Flask**, probably a Pittsburgh district glasshouse, 1860 - 1870. Aquamarine, applied collar with flat band - smooth base, Pt, attic mint; (a bit of faint interior content residue). GII-21. Comparatively scarce. From an estate in Bellefontaine, OH. Note; an old cork and wire corkscrew remain in the neck.

*Est.: \$175 - \$275 • Min. bid: \$90*



### Lot 13

**EAGLE - "NEW LONDON" / ANCHOR / "GLASS WORKS" Historical Flask**, 1856 - 1860. Brilliant pink puce, sheared mouth - iron pontil scar, Qt; (the neck is broken, a clay-like substance has been molded to form the neck; the body and remainder of the flask are virtually pristine, only a trace of wear). GII-66. An unlisted, extremely rare, incredible color! One of the absolute prettiest flasks that we have seen in a very long time. Robert Irons collection; Ex. G. Rodman Bouck; Clarence Gardner collections.

*Est.: \$3,000 - \$6,000 • Min. bid: \$1,500*



### Lot 10

**EAGLE - "LIBERTY" / OAK TREE Historical Flask**, possibility an early Pittsburgh glasshouse, 1825 - 1835. Medium amber through the center shading to a light honey coloration along the sides, sheared mouth - pontil scar, 1/2 Pt, virtually perfect; (a tiny onionskin-thin open bubble on reverse, otherwise pristine). GII-60. An absolutely fantastic example having a crisp, bold, strongest possible impression, outstanding condition, almost no wear, and one that stands upright beautifully.

*Est.: \$2,000 - \$3,500 • Min. bid: \$1,000*



### Lot 14

**EAGLE - "NEW LONDON" / ANCHOR / "GLASS WORKS" Historical Flask**, 1860 - 1866. Aquamarine, applied sloping collar - smooth base, Qt; (a 1" area on the shoulder has been professionally repaired, possibly a deep bubble that has been filled in, but is otherwise virtually perfect). GII-66. Rare! Beautifully whittled, almost no wear, strong, very bold impression, and nice with the applied sloping collar! Provenance: Robert Irons collection.

*Est.: \$300 - \$600 • Min. bid: \$150*



### Lot 11

**Lot of (2), Westford Glass Co. Historical Flasks**, Westford, CT, 1857 - 1873. **"LIBERTY" / EAGLE - "WESTFORD / GLASS / Co / WESTFORD / CONN"**, very deep olive amber, applied double collar - smooth base, 1/2 Pt; (some scattered light wear). GII-65. 2nd Example: **SHEAF OF GRAIN - "WESTFORD GLASS Co / WESTFORD / CONN"**, medium-to-deep olive amber, applied double collar - smooth base, Pt, near mint; (trace of minor wear; light interior shoulder haze). GXIII-35.

*Est.: \$200 - \$400 • Min. bid: \$100*



### Lot 15

**EAGLE - "NEW LONDON" / ANCHOR / "GLASS WORKS" Historical Flask**, 1860 - 1866. Aquamarine, applied round double collar - smooth base, 1/2 Pt, near mint; (just a slight trace of very minor wear, and a small area of faint interior milkiness, otherwise perfect). GII-67. A very nice example, almost no wear, and the noted patch of interior haze is light and non-offensive. Provenance: Robert Irons collection.

*Est.: \$200 - \$400 • Min. bid: \$100*



### Lot 12

**EAGLE - "NEW LONDON" / ANCHOR / "GLASS WORKS" Historical Flask**, 1860 - 1866. Gorgeous, bright yellow, almost a lemon yellow, with just a very slight hint of olive, applied round double collar - smooth base, Qt; (only the faintest bit of wear to include a tiny, tissue-paper-thin, open bubble at edge of base, otherwise absolutely pristine perfect). GII-66. A big, beautiful, rare flask, outstanding color, strong embossing, virtually no wear! Robert Irons collection.

*Est.: \$8,000 - \$12,000 • Min. bid: \$4,000*



### Lot 16

**EAGLE - "NEW LONDON" / ANCHOR / "GLASS WORKS" Historical Flask**, 1860 - 1866. Greenish aquamarine, applied round double collar - blowpipe pontil scar, 1/2 Pt, near mint; (a little spot of roughness, about 1/4", at the edge of the base, and a small potstone has a tiny, 1/16", cooling line, barely noticeable, otherwise virtually perfect). GII-67. A nice crude example, the glass being filled with tiny bubbles, and rare having the pontil scarred base! Provenance: Robert Irons collection.

*Est.: \$250 - \$450 • Min. bid: \$130*



### Lot 17

**EAGLE - "NEW LONDON" / ANCHOR / "GLASS WORKS" Historical Flask, 1860 - 1866.** Light yellow green, applied round double collar - smooth base, ½ Pt, perfect. GII-67. A fantastic example having a strong, very bold impression, almost no wear, and nice texture to the glass which is filled with tiny seed bubbles. Provenance: Robert Irons collection.

**Est.: \$800 - \$1,200 • Min. bid: \$400**



### Lot 21

**EAGLE - "NEW LONDON" / ANCHOR / "GLASS WORKS" Historical Flask, 1856 - 1860.** Light-to-medium blue green, sheared mouth - blowpipe pontil scar, ½ Pt; (some moderate high point wear, primarily on the reverse, but no other form of damage, and otherwise near mint). GII-67. A comparatively scarce, difficult little flask to acquire. This one has some nice whittling, swirls, and character to the glass. Provenance: Robert Irons collection.

**Est.: \$1,200 - \$1,800 • Min. bid: \$600**



### Lot 18

**EAGLE - "NEW LONDON" / ANCHOR / "GLASS WORKS" Historical Flask, 1860 - 1866.** Golden amber with an orange tone, applied round double collar - smooth base, ½ Pt; (some fine high point wear on the shoulders, a patch of light interior haze below the shoulder, and a light ring above the base, otherwise excellent). GII-67. The noted light interior haze could easily be cleaned with a few days in the tumbler. A bright, clean flask, bold impression. Robert Irons collection.

**Est.: \$800 - \$1,200 • Min. bid: \$400**



### Lot 22

**EAGLE - "NEW LONDON" / ANCHOR / "GLASS WORKS" Historical Flask, 1856 - 1866.** Aquamarine, applied double collar - iron pontil scar, Pt; (some moderate high point wear and scattered light scratches, but no other form of damage, and otherwise excellent). GII-68. A rare color for this mold, and also rare with the iron pontiled base. In searching the past 40 years of auction records, we could not find another example in aqua with the applied collar and iron pontil. Robert Irons collection.

**Est.: \$400 - \$600 • Min. bid: \$200**



### Lot 19

**EAGLE - "NEW LONDON" / ANCHOR / "GLASS WORKS" Historical Flask, 1860 - 1866.** Beautiful, medium olive yellow coloration, applied collar with flat band - smooth base, ½ Pt, virtually perfect; (a shallow pinhead flake on the edge of the lip; some in-manufacture annealing lines in the neck, mentioned for complete accuracy, but not considered damage, and the embossing is just a bit weak in the shoulder). GII-67. A beautiful and very rare color for this mold. Robert Irons collection.

**Est.: \$1,400 - \$2,400 • Min. bid: \$700**



### Lot 23

**EAGLE - "NEW LONDON" / ANCHOR / "GLASS WORKS" Historical Flask, 1856 - 1860.** Medium blue green, sheared mouth - blowpipe pontil scar, Pt; (a pinhead flake at the edge of the sheared lip, and a tiny potstone with a few 'legs', 3/16" or less, in the neck of the eagle, otherwise virtually perfect). GII-68. Beyond the little potstone and flake, a fantastic example, whittled, and with a crisp mold impression and bold embossing! Provenance: Robert Irons collection

**Est.: \$500 - \$800 • Min. bid: \$250**



### Lot 20

**EAGLE - "NEW LONDON" / ANCHOR / "GLASS WORKS" Historical Flask, 1856 - 1860.** Bright, medium-to-deep olive amber, almost a tobacco coloration, applied round double collar - iron pontil scar, ½ Pt; (some high point wear and a couple of light scratches, primarily on the sides near the base, otherwise very near mint). GII-67. Nice crude bubbly glass, heavily whittled. A rare color for this mold, and extremely rare with the iron pontil scar! Robert Irons collection.

**Est.: \$1,500 - \$2,500 • Min. bid: \$800**



### Lot 24

**EAGLE - "NEW LONDON" / ANCHOR / "GLASS WORKS" Historical Flask, 1860 - 1866.** Bright, golden amber, applied round double collar - smooth base, Pt, near mint; (just a slight trace of very minor wear, otherwise perfect). GII-68. A very rare color for this mold. In a search of auction records, it is believed that this is only the third example in golden amber to be offered at auction since the Gardner sale in 1975. Provenance: Robert Irons collection.

**Est.: \$1,200 - \$1,800 • Min. bid: \$600**



### Lot 25

**EAGLE - "NEW LONDON" / ANCHOR / "GLASS WORKS" Historical Flask**, 1856 - 1860. Medium-to-deep yellowish olive coloration, applied round double collar - iron pontil scar, Pt; (some scattered light wear, otherwise perfect). GII-68. Only the second example to be offered in this rare color since the Gardner auction in 1975. Beautifully whittled and rare with the iron pontil scarred base. Provenance: Robert Irons collection; Ex. Charles B. Gardner collection, Osgood collection.

*Est.: \$3,000 - \$6,000 • Min. bid: \$1,500*



### Lot 29

**EAGLE / "PITTSBURGH / PA" - EAGLE Historical Flask**, a Pittsburgh district glasshouse, 1860 - 1870. Bright, medium yellowish olive coloration, applied collar with flat band - smooth base, Qt; (a little typical light high point wear, primarily on the reverse, otherwise attic mint). GII-104. Nice color, beautifully whittled, overall excellent condition. A nice splash of color!

*Est.: \$500 - \$800 • Min. bid: \$250*



### Lot 26

**Lot of (2), Stoddard, Granite Glass Works Historical Flasks**, 1846 - 1862. **EAGLE / "GRANITE. / GLASS. CO" - EAGLE / "STODDARD / NH"**. 2nd Example: **EAGLE - EAGLE / "STODDARD / N.H."**. Both are shades of olive amber, sheared mouth - blowpipe pontil scarred bases, Pts; (the GII-81 has a small potstone with a couple of hard-to-see, 1/4", hairline cracks; the GII-82 has a little typical light wear, otherwise near mint). GII-81 & GII-82. A nice pair of Stoddard flasks!

*Est.: \$200 - \$300 • Min. bid: \$100*



### Lot 30

**CORNUCOPIA - URN Pictorial Flask**, probably Coventry Glass Works, Coventry, CT, 1835 - 1849. Clear medium green with an emerald tone, sheared mouth - pontil scar, 1/2 Pt; (a 1/2" area on the edge of the lip, next to a 1/4" flake, has been very lightly buffed, likely to remove a bit of minor roughness; just a trace of light wear and a 3/8" in-making pontil crack mentioned for complete accuracy). GIII-7. The noted condition issues are relatively minor. A beautiful and scarce color for this flask.

*Est. \$200 - \$300 • Min. bid: \$100*



### Lot 27

**Lot of (2), Stoddard Double Eagle Historical Flasks**, 1845 - 1860. **EAGLE - EAGLE Historical Flask**, yellowish olive amber, sheared mouth - blowpipe pontil scar, Pt; (some scattered moderate high point wear, but no chips, cracks, or other form of damage). GII-84. 2nd Ex: **EAGLE - EAGLE Historical Flask**, olive amber, sheared mouth - blowpipe pontil scar, 1/2 Pt; (some typical relatively minor high point wear, otherwise near mint). GII-86a.

*Est.: \$200 - \$300 • Min. bid: \$100*



### Lot 31

**Lot of (2), CORNUCOPIA - URN Pictorial Flasks**, probably Keene, NH, or Coventry, CT Glassworks, 1830 - 1850. Medium-to-deep olive green, and medium olive amber, both with sheared mouth - blowpipe pontil scarred base, 1/2 Pt, both near mint; (some minor interior residue, a little light exterior wear including a shallow 1/4" open surface bubble on the olive amber

example). GIII-7 & GIII-10. An attractive pair of 'Cornucopia - Urns' that compliment one another nicely!

*Est.: \$140 - \$240 • Min. bid: \$70*



### Lot 28

**EAGLE / (Bead) - EAGLE (Bead) Historical Flask**, a Stoddard, NH glasshouse, possibly Granite Glass Works, 1846 - 1862. Light-to-medium yellowish olive amber, sheared mouth - blowpipe pontil scar, 1/2 Pt, perfect. GII-88. A great example, attractive color and excellent character, having a nice pebbly texture, as well as a thread of glass on the interior that swirls from the shoulder through the body, to the base.

*Est.: \$120 - \$240 • Min. bid: \$60*



### Lot 32

**CORNUCOPIA - URN Pictorial Flask**, New England, 1835 - 1850. Medium-to-deep yellowish olive amber, sheared mouth - blowpipe pontil scar, 1/2 Pt, near mint; (just a trace of light wear including a bit of very minor roughness on the edge of the lip that you can feel, but is not easy to see, and a little roughness on the in-manufacture glass extrusion at the mold seam). GIII-12. A great example of this comparatively scarce flask having a strong impression and swirls through the glass.

*Est.: \$150 - \$250 • Min. bid: \$80*



### Lot 33

**CORNUCOPIA - URN Pictorial Flask**, Lancaster Glass Works, Lancaster, NY, 1849 - 1855. Rich medium emerald coloration, sheared mouth - blowpipe pontil scar, Pt, near mint; (some high point wear, primarily on the reverse; some scattered dried interior content residue, likely washable, and a shallow iridescent pontil flake that does not extend to the edge of the base, otherwise excellent). GIII-18. A beautiful example, scarce color, crude bubbly glass.

*Est.: \$1,000 - \$1,500 • Min. bid: \$500*



### Lot 37

**"UNION" / CLASPED HANDS / SQUARE AND COMPASS - EAGLE / "H & S" Historical Flask**, Haught & Schwerer Glass Co., Brownsville (Pittsburgh), PA, 1861 - 1864. Aquamarine, applied large square collar - smooth base, Qt; (only the slightest trace of minor wear, otherwise sparkling mint). GIV-39. A great example, fantastic condition, and with a strong impression.

*Est.: \$100 - \$200 • Min. bid: \$50*



### Lot 34

**MASONIC ARCH - EAGLE / "T.W.D" MASONIC ARCH - EAGLE / "KCC-NE" Historical Flask**, Keene Marlboro Street Glassworks, Keene, NH, 1820 - 1830. Yellowish olive amber, sheared mouth - blowpipe pontil scar, Pt; near mint; (just a touch of minor wear, otherwise virtually perfect). GIV-18. A very nice example, some nice yellowish tones below the shoulders, and the glass is filled with tiny seed bubbles.

*Est.: \$250 - \$400 • Min. bid: \$130*



### Lot 38

**"SUCCESS TO THE RAILROAD" / HORSE PULLING CART - (Reverse same) Historical Flask**, probably Mt. Vernon Glass Works, Vernon, NY, 1830 - 1846. Brilliant, clear, light yellowish olive, sheared mouth - blowpipe pontil scar, Pt, very near mint; (some washable light interior content residue, and only the slightest trace of faint wear, otherwise virtually pristine). GV-5. A fantastic example, excellent character, beautiful light color, outstanding condition.

*Est.: \$400 - \$600 • Min. bid: \$200*



### Lot 35

**MASONIC - MASONIC Historical Flask**, probably a New England glasshouse, 1820 - 1835. Medium blue green, sheared, tooled, inward rolled mouth - blowpipe pontil scar, 1/2 Pt; (just a touch of light high point wear, a slender 3/8" interior open bubble with a bit of residue, and a small potstone near one of the columns with a few tiny cooling lines, or 'legs', 1/8" or less, otherwise excellent). GIV-28. A scarce flask that displays as near mint. The condition issues are relatively minor.

*Est.: \$120 - \$240 • Min. bid: \$60*



### Lot 39

**"RAILROAD" / HORSE PULLING CART / "LOWELL" - EAGLE Historical Flask**, Coventry Glass Works, probably 1830 - 1835. Medium yellowish olive amber, sheared mouth - blowpipe pontil scar, 1/2 Pt; (some fine light high point wear, primarily on the reverse, otherwise virtually perfect). GV-10. A beautiful example, good impression, attractive lighter color. Unique in that it is the only railroad flask blown to commemorate a specific rail line. Provenance: Ex. Tom McCandless collection.

*Est.: \$300 - \$500 • Min. bid: \$150*



### Lot 36

**MASONIC - "ZANESVILLE" / EAGLE / "OHIO / J. SHEPARD & CO" Historical Flask**, Zanesville Glass Works, 1822 - 1832. Medium shading to very deep amber with some orangey tones through the lower half of the flask, sheared mouth - pontil scar, Pt; (a bit of minor wear including a couple of onionskin-thin open surface bubbles; a little in-manufacture dullness or exterior 'bloom' on the upper shoulders and neck). GIV-32. Great variegated color, almost a two-toned appearance.

*Est.: \$600 - \$900 • Min. bid: \$300*



### Lot 40

**SUNBURST FLASK**, probably Coventry Glass Works, Coventry, CT, 1815 - 1830. Clear medium olive with a very slight amber tone, sheared mouth - blowpipe pontil scar, Pt, near mint; (just a trace of light wear including a shallow, paper-thin, open surface bubble, otherwise perfect). GVIII-3. A great example having nice color, clarity, and condition.

*Est.: \$800 - \$1,200 • Min. bid: \$400*



### Lot 41

**SUNBURST FLASK**, an early Connecticut glasshouse, Coventry Glass Works, or possibly Pitkin Glass Works, East Hartford, CT, 1815 - 1830. Bright, medium yellowish olive with an amber tone, sheared mouth - blowpipe pontil scar, ½ Pt, virtually perfect; (only the slightest wisp of faint, barely noticeable wear, otherwise pristine perfect). GXIII-16. A fantastic example of this classic, early, Connecticut Sunburst Flask. If you are looking for a great example, this could be it.

*Est.: \$600 - \$900 • Min. bid: \$300*



### Lot 42

**SUNBURST FLASK**, Baltimore Glass Works, Baltimore, MD, 1820 - 1830. Colorless with a very pale, light, greenish-aqua tone through the base, sheared mouth - blowpipe pontil scar, ½ Pt; (a trace of light high point wear, and a potstone with a couple of tiny, 1/16" 'legs', otherwise very near mint). GVIII-27. A comparatively scarce flask. The condition issues are not easy to see!

*Est.: \$150 - \$250 • Min. bid: \$80*



### Lot 43

**"LOUISVILLE, KY - GLASS WORKS" SCROLL FLASK**, Louisville Glassworks, 1855 - 1860. Aquamarine, sheared mouth - iron pontil scar, Qt; (just a touch of interior milkiness in the shoulder, barely noticeable, and the slightest trace of light wear, otherwise perfect). Note; obverse similar to GIX-7 ("E" of "Louisville" not flowing into scroll above it); formation of lettering on reverse more closely resembles GIX-6 mold. A beautiful example, crude glass, outstanding character.

*Est.: \$250 - \$450 • Min. bid: \$130*



### Lot 44

**SCROLL FLASK**, Midwest, 1840 - 1860. Clear medium citron coloration, sheared mouth - blowpipe pontil scar, Pt; (a little light dullness on the ribs near the base on one corner; a 1/8" flake along with a 5/8" sliver-type chip on the top and inside edge of the lip, otherwise near mint). GIX-10d. A rare mold having an excellent impression, crisp stars and scrolls, beautiful color and clarity with a nice even tone from neck to base.

*Est.: \$600 - \$900 • Min. bid: \$300*



### Lot 45

**SCROLL FLASK**, Midwest, 1840 - 1860. Golden amber in the shoulders shading to a deeper amber with a slight orange tone through the fleur-de-lis above the base, sheared mouth - blowpipe pontil scar, ½ Pt; (some scattered light wear including a tiny, less than pinhead size open bubble, and a little interior residue or faint haze, possibly washable, otherwise excellent). GIX-34. A comparatively scarce mold. The colored half pint scrolls have always been popular, and it is easy to see why.

*Est.: \$500 - \$800 • Min. bid: \$250*



### Lot 46

**SCROLL FLASK**, a Pittsburgh district glasshouse, probably John Robinson & Son Glass Manufacturers, 1830 - 1834. Bright bluish aquamarine, corseted scroll form, sheared mouth - blowpipe pontil scar, Pt, virtually perfect; (only the slightest trace of faint wear and a less than pinhead size bit of roughness on the sheared lip, otherwise perfect). GIX-44. A great example, noted by McKearin as "Very rare". Similar to the marked "J R & Son" Scroll, but considerably more difficult to acquire.

*Est.: \$500 - \$800 • Min. bid: \$250*



### Lot 47

**"FOR PIKE'S PEAK" / PROSPECTOR - EAGLE / "CEREDO" Historical Flask**, probably Ceredo Glass Works, Ceredo, WV, 1860 - 1863. Deep bluish aquamarine, applied collar with flat band - smooth base, Qt; (in "as-found" condition from an estate in Bellefontaine, OH, having some interior content residue, likely washable, and a little exterior 'soot', almost certainly washable, and otherwise virtually perfect condition). GXI-34. A comparatively scarce and desirable flask, rich deep color!

*Est.: \$300 - \$600 • Min. bid: \$150*



### Lot 48

**"FOR PIKE'S PEAK" / PROSPECTOR - HUNTER SHOOTING DEER Historical Flask**, Ravenna Glass Works, Ravenna, OH, 1860 - 1865. Aquamarine, applied collar with flat band - smooth base, Qt, near mint; (a small onionskin-thin open bubble on the side; a bit of content residue in the shoulder, and some in-manufacture neck crazing noted for complete accuracy, but not considered damage). GXI-47. A comparatively scarce flask, excellent condition and nicely whittled.

*Est.: \$250 - \$400 • Min. bid: \$130*



### Lot 49

**Lot of (2), "UNION" / CLASPED HANDS - EAGLE Historical Flasks**, both Pittsburgh district, one example blown at Adams & Co. ("A & CO" in pennant on reverse), 1865 - 1875. Both are aqua, applied mouth with flat band - smooth base, Pt, and perfect! 1st Ex. is GXII-22; 2nd ex. is unlisted. The unlisted example is Ex. Jim Bender collection and very scarce-to-rare. The marked "A & CO", GXII-22 is a particularly nice example with good color, and crisp, strong embossing.

*Est.: \$175 - \$350 • Min. bid: \$90*



### Lot 50

**Lot of (2), "LOUISVILLE, KY / GLASS WORKS" Letter Flasks**, probably 1865 - 1873. Both are aqua, strap-side, applied collar with flat band - smooth base, Qt. and ½ Pt; (the quart is attic mint, the ½ pint has been professionally cleaned with some overall light scratches and fine wear remaining, but no other form of damage). GXV-12 & GXV-14. Both listed as, "Comparatively scarce". The quart, in our opinion, is very scarce-to-rare, especially in this beautiful, virtually pristine, condition.

*Est.: \$175 - \$350 • Min. bid: \$90*



### Lot 51

**Lot of (2), "GEO. W. ROBINSON / No 75 / MAIN ST. W. VA." Lettered Flasks**, Wheeling Glass Works, W. VA., 1860 - 1869. Both are aqua, applied collar with band - smooth base, Pt. & ½ Pt; (the Pt. is near perfect - minor lip roughness; ½ Pt. professionally cleaned with some faint haze, light scratches and wear remaining). GXV-19 & GXV-20. Both flasks are listed as "Rare" by McKearin. It is believed these flasks were made 1867 - 1868, prior to the glassworks going dormant.

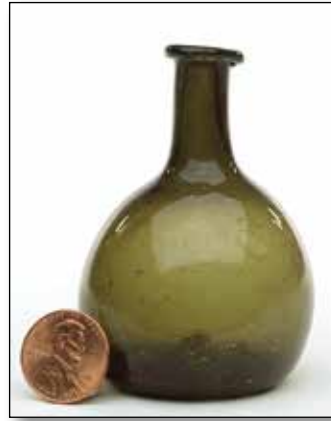
*Est.: \$200 - \$400 • Min. bid: \$100*



### Lot 52

**"UNION GLASS WORKS. / NEW LONDON / CT" Lettered Flask**, probably 1859 - 1863. Aquamarine, applied round double collar - smooth base, Pt, perfect. GXV-23. A rare and desirable mold, listed by McKearin in Group C, Rare Flasks, #16. An outstanding example having crude, very bubbly glass, fantastic condition. Provenance: Robert Irons collection; Ex. Charles B. Gardner collection.

*Est.: \$800 - \$1,600 • Min. bid: \$400*



### Lot 53

**Rare, Miniature Freeblown Globular Bottle**, New England, 1790 - 1820. Medium olive coloration, globular form, sheared mouth with an applied, small, ring-type collar, blowpipe pontil scar, ht. 2 5/8", virtually perfect; (just a slight trace of typical faint wear and some interior content residue in the base). MW, plate 47. An extremely rare, diminutive size, bubbly glass, beautiful condition. Provenance: Robert Irons collection.

*Est.: \$2,000 - \$3,000 • Min. bid: \$1,000*



### Lot 54

**Rare, Miniature Freeblown Globular Bottle**, New England, 1790 - 1820. Delicate, light olive amber, globular form, sheared mouth with an applied, small, ring collar, delicate blowpipe pontil scar, ht. 3 ½", near mint; (some light, washable, interior residue, and a little typical light exterior wear). MW, plate 47. A fantastic, eye-appealing example, the glass being filled with tiny bubbles, nice light 'see-through' color, and excellent condition. Provenance: Robert Irons collection.

*Est.: \$2,000 - \$3,000 • Min. bid: \$1,000*



### Lot 55

**Rare, Miniature Freeblown Globular Bottle**, New England, 1790 - 1820. Medium olive amber, globular form, applied ring-type collar - pontil scar, ht. 3 ½", near mint; (just a trace of minor wear, and a little light interior residue). Another great example, crude bubbly glass, excellent form, fantastic condition. These are three great examples that compliment one another nicely. Make no mistake, these are rare, and seldom offered for sale. Don't miss this opportunity. Robert Irons collection.

*Est.: \$2,000 - \$3,000 • Min. bid: \$1,000*



### Lot 56

**Early, Freeblown Chestnut Flask**, probably a Mid-Atlantic glasshouse, 1770 - 1800. Clear, light yellowish green, plump chestnut form, heavy applied round collar, almost a blob collar, with a tooled crimped mark on the side (likely formed from the glassblower's pucella) - blowpipe pontil scar, ht. 7 ¾"; (just a trace of typical light exterior usage wear, otherwise perfect). A very early Chestnut Flask, attractive plump form (almost spherical base), short neck, outstanding condition!

*Est.: \$300 - \$600 • Min. bid: \$150*

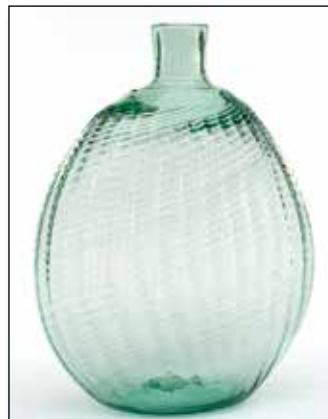




### Lot 57

**Giant, Early Freeblown Chestnut Bottle**, South Jersey, probably Wistarburgh Glass Works, Alloway, NJ, 1740 - 1780. Clear, medium-to-deep yellowish green, high shouldered chestnut form, sheared mouth with an applied string rim - blowpipe pontil scar with a bit of iron or gall in the center, ht. 11 ¾"; (some scattered scratches and typical usage wear; some spotty light interior milkiness, otherwise excellent). Classical Wistar form and color, very rare size!

*Est.: \$1,200 - \$2,400 • Min. bid: \$600*



### Lot 61

**Pitkin Type Flask**, America, probably Mid-Atlantic region, 1790 - 1820. Bright, greenish aquamarine, almost a light sea-green coloration, 30 broken rib pattern swirled to the right, plump horseshoe form, sheared mouth - blowpipe pontil scar, ht. 6 ½", virtually perfect; (very faint trace of light wear near base, otherwise pristine). Similar to MW, plate 89, #9. A bright, clean, sparkling example with good eye-appeal and a very bold impression through the shoulders.

*Est.: \$400 - \$600 • Min. bid: \$200*



### Lot 58

**Freeblown Chestnut Flask**, New England, 1785 - 1820. Clear, light olive green, chestnut form, sheared mouth with an applied ring-type collar - blowpipe pontil scar, ht. 5 ½", virtually perfect; (only the slightest trace of wear and faint washable interior residue). A little sweetheart of a chestnut, light delicate color.

*Est.: \$250 - \$400 • Min. bid: \$130*



### Lot 62

**Pitkin Type Flask**, America, probably Mid-Atlantic region, 1790 - 1820. Bright medium olive with a slight yellowish tone, 32 broken rib pattern swirled to the right, ovoid form, sheared mouth - blowpipe pontil scar, ht. 6 ¾"; (just a trace of faint light wear, otherwise perfect). Nice color, good form, excellent condition! Provenance: Ex. Paul Ballentine collection (lot #98). Note; in the Ballentine catalog, the color was termed, "medium sage green".

*Est.: \$500 - \$800 • Min. bid: \$250*



### Lot 59

**Freeblown Chestnut Flask**, New England, 1785 - 1820. Medium olive amber, chestnut form, sheared mouth with a crudely applied ring-type collar - blowpipe pontil scar, ht. 5 5/8", near mint; (a little light, washable, interior residue in the shoulders, and just a touch of typical minor exterior wear, otherwise perfect). Nice rich olive tones and excellent character - the glass being filled with tiny seed bubbles and small potstones (with no associated issues).

*Est.: \$250 - \$400 • Min. bid: \$130*



### Lot 63

**Pitkin Type Flask**, Midwest type, probably Pennsylvania, 1810 - 1830. Rich golden amber through the body shading to a dense amber through the shoulders, patterned with 36 vertical ribs over 36 ribs swirled to the left, flattened circular body, sheared mouth - blowpipe pontil scar, ht. 6 1/8"; (a little exterior wear including a tiny pinhead flake on the shoulder, some washable content residue in the base, and a slightly weak impression, otherwise excellent). Very similar to MW, plate 88, #1.

*Est.: \$400 - \$600 • Min. bid: \$200*



### Lot 60

**Lot of (3), Freeblown Chestnut Flasks**, New England, 1785 - 1820. Light olive amber, almost a straw color, light olive with an amber tone, and clear medium olive, all are chestnut form, applied ring collars - blowpipe pontil scarred bases, ht. 5 ½", 5 3/8", and 5 3/8", respectively; (a few scattered light scratches, and some expected typical, light exterior wear, otherwise all are near mint).

A beautiful trio of classic New England chestnut flasks, nice colors, overall excellent condition.

*Est.: \$600 - \$900 • Min. bid: \$300*



### Lot 64

**Pattern Molded Flask**, Midwest, probably Zanesville Glass Works, Zanesville, OH, 1820 - 1835. Golden amber, almost a honey coloration, 24 vertical ribs, rounded chestnut form, sheared mouth - pontil scar, ht. 5 1/8"; (some typical minor usage wear; a few small areas of light exterior dullness, not terribly distracting, otherwise excellent). Form and pattern similar to MW, plate 98.

*Est.: \$250 - \$400 • Min. bid: \$130*



### Lot 65

**Pattern Molded Flask**, Midwest, probably Zanesville Glass Works, Zanesville, OH, 1820 - 1835. Golden amber, 24 ribs swirled to the left, rounded chestnut form, sheared mouth - pontil scar, ht. 4 7/8"; (a little scattered light wear and some interior residue - likely washable, through the shoulders, otherwise very near mint). Another classical early Zanesville pattern molded pocket flask.

*Est.: \$250 - \$400 • Min. bid: \$130*



### Lot 69

**Pattern Molded Beehive Bottle**, Midwest, 1825 - 1840. Aquamarine, 25 ribs swirled to the right, beehive form rounding inward at base, almost a transitional globular form, applied rounded collar - blowpipe pontil scar, ht. 8 1/2"; (just a slight trace of typical light wear, and a small ring of haze in the base, otherwise perfect). A seldom encountered rib count. 25 ribs have typically been unattributed. However, there is speculation that Moscow (OH), produced this rib count. John Apple collection.

*Est.: \$200 - \$400 • Min. bid: \$100*



### Lot 66

**Pattern Molded Flask**, Midwest, probably Zanesville Glass Works, Zanesville, OH, 1820 - 1835. Deep amber, 24 fine ribs swirled to the left, chestnut form, sheared lip with a flared, tooled, ring-type collar - pontil scar, ht. 5 1/8"; (a few faint scratches and some light exterior wear near the base; pattern weakens near the base as is typical, otherwise excellent). A classical little Zanesville pocket flask, fine tight ribbing through the mid-body and shoulders, very scarce with flared collar.

*Est.: \$250 - \$400 • Min. bid: \$130*



### Lot 70

**Pattern Molded Beehive Bottle**, Midwest, probably Pittsburgh district, 1820 - 1835. Aquamarine, 24 broken rib pattern swirled to the left, beehive form, applied inverted collar - blowpipe pontil scar, ht. 8", near mint; (just a touch of typical minor usage wear, and a bit of very faint haze in one side, barely noticeable). Attractive broken swirl pattern. Note; the impression is a little weak, as is often the case, but the 'popcorn' effect from the broken swirl pattern still comes through.

*Est.: \$150 - \$250 • Min. bid: \$80*



### Lot 67

**Pattern Molded Globular Bottle**, Midwest, probably Zanesville Glass Works, Zanesville, OH, 1820 - 1840. Light golden amber, 24 ribs swirled to the right, globular form, sheared, tooled, and outward folded mouth - pontil scar, ht. 7 1/4"; (in 'as-found' condition from an estate in Bellefontaine, OH, with some overall light-to-moderate interior content residue and light haze, some of which may wash out, and a minor bit of light wear, otherwise perfect). Good form and color.

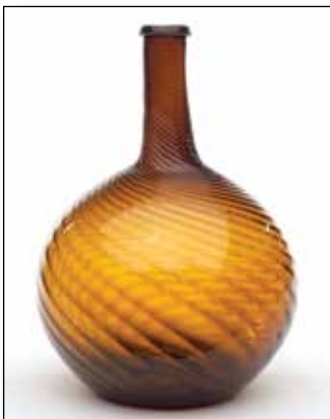
*Est.: \$500 - \$800 • Min. bid: \$250*



### Lot 71

**Freeblown Utility or Storage Bottle**, probably England, possibly Continental, 1830 - 1850. Deep, vivid cobalt, almost a violet coloration, globular form, sheared and outward rolled mouth - polished pontil scarred base, ht. 8 3/4", near mint; (some light interior content haze, possibly washable, and just a trace of minor wear, otherwise perfect). Very heavy glass, possibly used in an apothecary shop. Good form, vivid color, excellent condition, scarce. Provenance: Robert Irons collection.

*Est.: \$300 - \$600 • Min. bid: \$150*



### Lot 68

**Pattern Molded Globular Bottle**, probably Zanesville Glass Works, Zanesville, OH, 1820 - 1840. Bright golden amber, 24 ribs swirled to the left, globular form, sheared, tooled, and outward folded mouth - pontil scar, ht. 7 3/4", near mint; (a little patchy light interior residue and faint haze, primarily near the base, otherwise virtually perfect). A beautiful example, good form, color, clarity, and strength of impression. John Apple collection; Ex. Robert and Janice Weeks collection.

*Est.: \$600 - \$900 • Min. bid: \$300*



### Lot 72

**Lot of (3), Stemmed Open Bowls**, Pittsburgh, Boston area, or possibly England, 1820 - 1850. Plum amethyst, fiery opalescent milkglass, and lavender blue, all with nearly straight-sided bowls, sheared rims - pontil scarred applied baluster stems, footed disk bases with

inward folded rims, ht. 4 1/4", 4 3/8" and 5" respectively, all three are perfect! A great trio of early blown bowls, beautiful colors that compliment one another.

*Est.: \$250 - \$450 • Min. bid: \$130*



### Lot 73

**Early, Freeblown, Covered Sugar Bowl**, probably America (Pennsylvania), possibly England, 1790 - 1820. Deep, vivid, cobalt blue, bulbous bowl flaring outward to a shallow galleried rim, applied solid pedestal foot with pontil scar; pontiled domed cover with flattened, spiral ribbed, acorn finial, ht. 6 3/4" (including cover), both lid and bowl are perfect. A fantastic, early period, covered sugar bowl. The lid fits perfectly and is almost certainly original to the bowl.

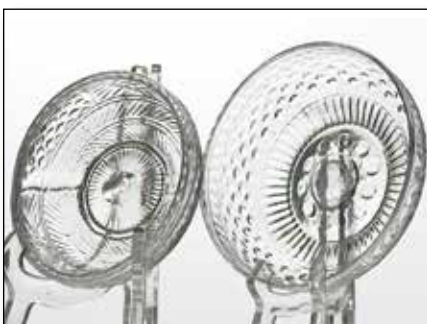
*Est.: \$600 - \$1,200 • Min. bid: \$300*



### Lot 74

**Rare, Blown Three Mold Salt Cellar**, America, 1825 - 1840. Deep cobalt blue, geometric pattern with diamond and sunburst motif, hemispherical bowl with shear rim - pedestal foot with pontil scarred, rayed base, ht. 1 3/4", rim dia. 2 3/4", perfect. Gill-3. It is interesting to note, Per McKearin, the Gill-3 mold was only utilized for hats and salts. Of the two forms, the salts certainly seem to be the more difficult to acquire.

*Est.: \$400 - \$800 • Min. bid: \$200*



### Lot 75

**Lot of (2), Blown Three Mold Bowls**, probably Boston and Sandwich Glassworks, 1825 - 1840. Both are colorless, shallow bowl form. 1st Ex. with diamond and vertical rib pattern, 2nd Ex. with sunburst, diamond and rib pattern; both with tooled and outward folded rims - pontil scarred bases, ht. 1 1/2" and 1 5/8" respectively, 1st example is perfect; 2nd example near mint; (a bit of light haze underneath rim as well as a 1/4" flake along bottom edge of rim). Gill-18 & Gill-21. Scarce.

*Est.: \$175 - \$350 • Min. bid: \$90*



### Lot 76

**Blown Three Mold Creamer**, America, 1820 - 1840. Colorless, 'bucket-form' body with geometric diamond and sunburst pattern, sheared and tooled flared rim with pour spout, solid handle crimped and curled at lower attachment - rayed base with blowpipe pontil scar, ht. 4 1/4", perfect! Gill-24. A great example, very scarce mold, strong impression, and in a rare, larger size, than normally encountered. This one is a cut above for a colorless creamer.

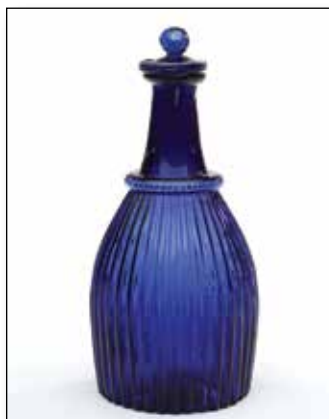
*Est.: \$400 - \$800 • Min. bid: \$200*



### Lot 77

**Blown Three Mold Miniature Decanter**, Boston and Sandwich Glassworks, Sandwich, MA, 1825 - 1840. Colorless, globular body with geometric diamond and sunburst pattern, sheared, wide flanged mouth - blowpipe pontil scar, ht. 3 3/8", perfect. Gill-21. BK, plate #1321. A rare little bottle (miniature decanter), with a very strong impression, outstanding condition. If you appreciate early Three Mold items, don't miss your opportunity, these are scarce and seldom offered for sale.

*Est.: \$300 - \$500 • Min. bid: \$150*



### Lot 78

**Blown Three Mold Toilet Water Bottle**, probably Boston and Sandwich Glass Works, 1825 - 1840. Rich, medium-to-deep cobalt with a violet tone, barrel form, geometric pattern with vertical ribbing, molded neck ring, plain neck with flanged collar, original "tam-o'shanter" type stopper - plain base with blowpipe pontil scar, ht. 6" (including stopper), bottle and stopper virtually perfect; (a little minor roughness around flange of stopper). Gill-7, type 2; McK, plate 105. Robert Irons collection.

*Est.: \$200 - \$300 • Min. bid: \$100*



### Lot 79

**Figural Monument Cologne Bottle**, a South Boston glasshouse, probably Boston and Sandwich Glass Works, 1860 - 1880. Deep cobalt blue, obelisk form fashioned after the Bunker Hill Monument, tooled ring collar - smooth base, ht. 8 1/8", perfect; (note a little in-manufacture roughness resulting from a little thread of glass on the edge of the lip). MW, plate 114, #3. Nice rich color, fantastic condition. Provenance: Robert Irons collection.

*Est.: \$250 - \$450 • Min. bid: \$130*



### Lot 80

**Figural Monument Cologne Bottle**, a South Boston glasshouse, probably Boston and Sandwich Glass Works, 1860 - 1880. Deep plum amethyst, in the form of the Bunker Hill Monument, tooled ring collar - smooth base, ht. 9 3/4"; (two sliver-type chips, approximately 7/8", on the neck - possibly in-manufacture as they appear to blend into the lip and to have been fire polished, or 'softened', at the lip). MW, plate 114, #3. Provenance: Robert Irons collection.

*Est.: \$250 - \$450 • Min. bid: \$130*



### Lot 81

**Cologne Bottle**, a South Boston glasshouse, possibly Boston and Sandwich Glass Works, 1860 - 1875. Sapphire blue with strong lavender tones, 12 panel straight sided form with horizontal ribs on alternating panels, tooled ring collar - smooth base, ht. 5 5/8"; (a hard-to-see, 3/16" iridescent bruise on the edge / underside of the lip, and a tiny pinpoint base bruise). A very rare mold, beautiful color. Robert Irons collection; Ex. Charles B. Gardner collection.

*Est.: \$400 - \$600 • Min. bid: \$200*



### Lot 85

**Paneled Cologne Bottle**, America, probably Boston and Sandwich Glass Works, Sandwich, MA, 1865 - 1885. Amethyst with a rose-violet or fuchsia tone above the base, 12 panel ovoid form, tooled, flanged mouth - smooth base, ht. 4 3/4", perfect; (note; the crude ring collar has some in-manufacture roughness, mentioned for complete accuracy). B/K #5198. A very pretty tone of amethyst that passes plenty of light! Provenance: Robert Irons collection.

*Est.: \$150 - \$250 • Min. bid: \$80*



### Lot 82

**Corseted Cologne Bottle**, Boston and Sandwich Glass Works, Sandwich, MA, 1855 - 1865. Medium-to-deep cobalt blue, octagonal corseted form, applied ring collar - blowpipe pontil scar, ht. 6"; (just a trace of minor wear, and some light interior haze, otherwise very near mint). B/K #5199. Per B/K, it is believed that this octagonal corseted form is exclusive to the Sandwich Glass Works. Attractive, and scarce with the pontil scarred base. Robert Irons collection.

*Est.: \$200 - \$300 • Min. bid: \$100*



### Lot 86

**Paneled Cologne Bottle**, probably Boston and Sandwich Glass Works, Sandwich, MA, 1855 - 1870. Medium amethyst with a slight purple tone, almost a grape-amethyst, 12 panel ovoid form, tooled, inward rolled ring collar - pontil scarred base, ht. 4 5/8", near mint; (slight bit of light dullness on a couple of panels near the base). B/K #5198. Another beautiful color. The glass has a 'stippled' or fine pebbly texture to it. Scarce having the pontil scarred base. Provenance: Robert Irons collection.

*Est.: \$150 - \$250 • Min. bid: \$80*



### Lot 83

**Corseted Cologne Bottle**, Boston and Sandwich Glass Works, Sandwich, MA, 1860 - 1875. Beautiful, medium teal coloration, octagonal corseted form, tooled ring collar - smooth base, ht. 4 1/2", perfect. B/K #5199; MW, plate 114. This one has plenty of eye-appeal, having gorgeous color and the attractive corseted, or 'hourglass', form. Provenance: Robert Irons collection.

*Est.: \$250 - \$350 • Min. bid: \$130*



### Lot 87

**Paneled Cologne Bottle**, probably Boston and Sandwich Glass Works, Sandwich, MA, 1855 - 1870. Rich, grape amethyst, 12 panel ovoid form, applied flanged collar - appears to have a very faint blowpipe pontil scar, ht. 4 5/8", perfect. B/K #5198; MW, plate 114. Beautiful grape coloration, excellent condition. Provenance: Robert Irons collection.

*Est.: \$175 - \$275 • Min. bid: \$90*



### Lot 84

**Corseted Cologne Bottle**, Boston and Sandwich Glass Works, Sandwich, MA, 1860 - 1875. Beautiful, medium teal coloration, octagonal corseted form, tooled ring collar - smooth base, ht. 4 1/2", virtually perfect; (just a bit of light interior residue, or faint haze, that may very well wash out). B/K #5199; MW, plate 114. Almost identical to the preceding lot. Scarce, fantastic color, and desirable form. Provenance: Robert Irons collection.

*Est.: \$250 - \$350 • Min. bid: \$130*



### Lot 88

**Paneled Cologne Bottle**, America, probably Boston and Sandwich Glass Works, Sandwich, MA, 1860 - 1880. Rich, medium cobalt blue with a violet tone near the base, 12 panel, ovoid form, tooled and inward rolled ring collar - smooth base, ht. 4 3/4", virtually perfect; (slight trace of faint wear). B/K #5198. Termed "Blown Molded Commercial Colognes", these early paneled bottles came in a variety of attractive sizes and colors. Provenance: Robert Irons collection.

*Est.: \$100 - \$200 • Min. bid: \$50*



### Lot 89

**Paneled Cologne Bottle**, America, probably Boston and Sandwich Glass Works, Sandwich, MA, 1865 - 1885. Fiery opalescent milkglass, almost a clambroth coloration, 12 panel ovoid form, tooled, flanged mouth - smooth base, ht. 4 7/8", perfect. B/K #5198; MW, plate 113, #2. Beautiful and very scarce color, this one having plenty of that fiery tone to it. Provenance: Robert Irons collection.

**Est.: \$200 - \$400 • Min. bid: \$100**



### Lot 93

**Paneled Cologne Bottle**, probably Boston and Sandwich Glass Works, Sandwich, MA, 1860 - 1880. Sapphire blue, straight-sided 12 panel form, sheared lip with an applied ring collar - smooth base, ht. 5 3/8", near mint; (a little faint light content haze in the lower half; slight trace of typical light wear). B/K #5197; MW plate 114, #5. It is interesting to note that per Barlow-Kaiser, all of the straight-sided paneled colognes dug at the Sandwich Glass Works site were 12 panel. Robert Irons collection.

**Est.: \$100 - \$200 • Min. bid: \$50**



### Lot 90

**Cologne Bottle**, a South Boston glasshouse, probably Boston and Sandwich Glass Works, 1860 - 1875. Clear, light-to-medium amethyst, 12 panel straight sided form, domed shoulders, short neck, thin flanged lip - smooth base, ht. 4 3/4", perfect. A very scarce-to-rare mold, absolutely fantastic color! We sold one in Auction 10, in a dense amethyst, that was Ex. Sandwich Glass Museum collection. This form does not come around often. Provenance: Robert Irons collection.

**Est.: \$400 - \$600 • Min. bid: \$200**



### Lot 94

**Lot of (2), Paneled Cologne Bottles**, probably Boston and Sandwich Glass Works, Sandwich, MA, 1860 - 1880. Rich, medium-to-deep teal coloration, and cobalt blue, both are straight-sided 12 panel form, tooled and applied flanged collars - smooth bases, ht. 4 3/4" each, both near mint; (the teal example has just a slight bit of spotty faint haze on a few panels near the base, otherwise excellent). Both, B/K #5197; MW, plate 114. A beautiful pair of little paneled colognes. Robert Irons collection.

**Est.: \$175 - \$275 • Min. bid: \$90**



### Lot 91

**Paneled Cologne Bottle**, probably Boston and Sandwich Glass Works, Sandwich, MA, 1860 - 1880. Medium plum amethyst in the upper half, shading to a deep plum amethyst near the base, straight-sided 12 panel form, tooled, likely applied, ring collar - glass tipped pontil scar, ht. 6"; (just a slight trace of faint wear, otherwise perfect). B/K #5197; MW, plate 114. Beautiful color, and certainly scarce with the pontil scarred base. Provenance: Robert Irons collection.

**Est.: \$200 - \$300 • Min. bid: \$100**



### Lot 95

**Paneled Cologne Bottle**, probably Boston and Sandwich Glass Works, Sandwich, MA, 1860 - 1880. Medium-to-deep plum amethyst, 8 panel, corseted rectangular form, tooled, flanged mouth - smooth base, ht. 4 3/4", near mint; (just a touch of very fine, light wear, otherwise perfect). B/K #5200; MW, plate 6, also, *The Glass Industry in South Boston*, Kaiser, #168. Provenance: Robert Irons collection.

**Est.: \$175 - \$275 • Min. bid: \$90**



### Lot 92

**Paneled Cologne Bottle**, probably Boston and Sandwich Glass Works, Sandwich, MA, 1860 - 1880. Bright, medium teal coloration, straight-sided 12 panel form, tooled, likely applied, ring collar - smooth base, ht. 5 1/2", virtually perfect; (a faint little tiny ring of interior milkiness, barely noticeable, otherwise mint). B/K #5197; MW, plate 114. Beautiful color, scarce, and fantastic clarity from top-to-bottom. Provenance: Robert Irons collection.

**Est.: \$175 - \$275 • Min. bid: \$90**



### Lot 96

**Unusual Cologne Bottle (embossed Shield and Lattice pattern)**, America, 1875 - 1885. Deep raspberry amethyst coloration, oval with corseted sides, embossed shield with 12 stars and 9 vertical bars - reverse with plain shield, tooled square collar - smooth base, ht. 5 1/4", perfect. A most unusual mold and pattern (one that we have not seen before), fantastic, eye-appeal and color. Provenance: Robert Irons collection.

**Est.: \$100 - \$200 • Min. bid: \$50**



### Lot 97

**Rare, Concentric Ring Scent Bottle**, America, probably New England, 1815 - 1830. Deep, black amethyst, circular wafer body with concentric ring pattern, beveled corrugated sides with 34 ribs, sheared mouth - pontil scarred base, ht. 2 3/8"; (slight trace of light wear, otherwise perfect). MW, plate 105, #13; McK, plate 241, #15. A rare pattern, rare color. As McKearin notes, the design is similar to that found on stoppers for early flint glass decanters.

**Est.: \$300 - \$500 • Min. bid: \$150**



### Lot 101

**Blown Three Mold Inkwell**, Keene Marlboro Street Glassworks, Keene, NH, 1820 - 1840. Deep olive amber, cylindrical, disk type mouth - plain base with blowpipe pontil scar, ht. 1 1/2", perfect. Gill-29. A great example, excellent condition with no issues to the disk mouth, and also a bit lighter in tone. Provenance: Robert Irons collection.

**Est.: \$120 - \$240 • Min. bid: \$60**



### Lot 98

**Diamond and Sunburst Scent Bottle**, New England or possibly Mid-Atlantic, 1820 - 1840. Deep emerald with a teal tone, 2-pc. mold, elliptical body with high relief diamond pattern - reverse with sunburst motif, smooth sides, sheared mouth - pontil scar, ht. 2 3/4"; (some light high point wear; some interior residue that would likely wash out, otherwise very near mint). MW, plate 105, #7. Another beautiful example, rare pattern, rich color.

**Est.: \$250 - \$450 • Min. bid: \$130**



### Lot 102

**Lot of (2), Blown Three Mold Inkwells**, Coventry Glass Works, Coventry, CT, 1820 - 1840. Deep olive amber and deep olive green, both are cylindrical with large, disk type mouths - plain and ringed bases with blowpipe pontil scar, ht. 1 1/2" & 1 7/8" respectively, both are perfect! Both Gill-18. A beautiful pair of early New England geometric inks, fantastic condition. Note; the green example is oversize and larger than most. Provenance: Robert Irons collection.

**Est.: \$250 - \$350 • Min. bid: \$130**



### Lot 99

**Rare, Early Scent Bottle**, probably America, 1800 - 1830. Light-to-medium amethyst with some subtle striations swirled through the base, 17 ribs swirled to the right, 2-pc. mold, sheared mouth - blowpipe pontil scar, ht. 2 3/8"; (bit of faint wear, otherwise perfect). Pictured, MW, plate 103, #14. Very rare from several aspects: The unusual plump form, long neck, having a 2-pc. mold, as well as the rib count. Beautiful color! Ex. George S. McKearin; Ed Herrold collections.

**Est.: \$300 - \$500 • Min. bid: \$150**



pontil, ht. 1 1/2", dia. 2 1/4"; (Umbrella has a surface potstone with just a tiny bit of iridescence; Gill-18 has some typical light wear including a paper-thin 1/8" flake at shoulder, otherwise both excellent).

**Est.: \$200 - \$300 • Min. bid: \$100**

### Lot 103

**Lot of (2), Early Inks**, New England, 1820 - 1850. 1st Ex: **Umbrella Ink**, medium-to-deep olive amber, 8-sided umbrella, sheared mouth - blowpipe pontil scar, ht. 2 1/2", base dia. 2 1/8". 2nd Ex: **Blown Three Mold Inkwell**, deep amber, Gill-16 geometric pattern, disk mouth - plain base, blowpipe



### Lot 100

**Lot of (2), Pattern Molded Scent Bottles**, probably America, 1780 - 1820. Beautiful medium amethyst and teal coloration, 26 and 20 ribs respectively, both are ovoid form, sheared mouth - pontil scarred, ht. 3" and 3 1/4" respectively; (Amethyst ex. has a 3/16" chip on the sheared lip; Teal ex. has some light inside haze, otherwise both excellent). These early scent bottles were termed, 'figured smelling bottles' or 'twisted pungent bottles'.

**Est.: \$150 - \$250 • Min. bid: \$80**



flanged lip - blowpipe pontil scar, ht. 1 3/4", both perfect! Original labeled box and top near mint; (a few separated corners on lid and box). Faulkner, p.199. Extremely rare, less than a handful known in this state of preservation.

**Est.: \$250 - \$350 • Min. bid: \$130**

### Lot 104

**Two Early, Kidder Ink Bottles**, (complete with original box and packaging), America, 1845 - 1855. 1st bottle: "**F / KIDDER - IM / PROVD - INDEL / IBLE - INK**", aqua, rectangular, thin flanged lip - blowpipe pontil scar, ht. 2 3/8"; 2nd bottle: "**F K**", aqua, cylindrical, thin



### Lot 105

**Teakettle Inkwell**, probably America, 1850 - 1870. Raspberry amethyst, square teakettle form with tapered sides, four flat side panels and four flat corner panels, beveled base and top, ht. 1 5/8"; (a little light interior residue, and a "J" shaped crack, approximately 3/4", that travels down from the factory ground mouth). JM#320. Noted as "Very Rare" by Matthews, beautiful color, hard-to-find smaller size. Provenance: Robert Irons collection.

*Est.: \$200 - \$400 • Min. bid: \$100*



### Lot 109

**Igloo Inkwell**, America, 1865 - 1875. Medium amber, 'igloo form' with high-back domed shoulders, offset neck with factory ground mouth - smooth base, ht. 1 7/8", virtually perfect; (a 1/8" flake off the side of the ground lip, likely in-manufacture, otherwise mint). Faulkner, p.185; C #647. Scarce. A great example, virtually attic mint condition.

*Est.: \$250 - \$350 • Min. bid: \$130*



### Lot 106

**Teakettle Inkwell**, probably America, possibly Boston and Sandwich Glass Works, Sandwich, MA, 1850 - 1875. Medium pinkish raspberry amethyst, teakettle form with eight concave panels, three vertical ribs between each panel, flat top - beveled edge smooth, ht. 2", virtually perfect; (a tiny, less than pinhead size, bit of roughness on one of the vertical ribs; original brass cap rests on collar, but not hinged, otherwise perfect). JM #128. Rare mold, fantastic, beautiful color!

*Est.: \$400 - \$600 • Min. bid: \$200*



### Lot 110

**"J - & - I - E - M" Monitor Ink**, America, 1865 - 1880. Medium-to-deep yellowish 'old amber', cylindrical with six block panels around the sides, domed shoulders, offset neck with sheared mouth - "a" (on smooth base), ht. 1 3/4", attic mint. Faulkner, pgs. 95-97. Put out by the John Moore Ink Company of Warren, Mass., labeled examples indicate they held Moore's Excelsior School Writing Ink. The Moore Co. referred to these inks in their catalogs as "Monitors"

*Est.: \$250 - \$350 • Min. bid: \$130*



### Lot 107

**Teakettle Inkwell**, probably America, possibly Boston and Sandwich Glass Works, 1850 - 1875. Deep grape amethyst, teakettle form with eight concave panels, three vertical ribs between each panel, flat top - beveled edge smooth, ht. 2"; (brass collar is period, but may not be original to this piece; some flakes or chipping at mold seam along two of the beveled panels, otherwise excellent). Unlisted. Very similar to JM #128, but slight variation in panels and position of panels.

*Est.: \$250 - \$450 • Min. bid: \$130*



### Lot 111

**"S. FINE / BLK INK"**, 1845 - 1855. Rich medium emerald, almost a sage green coloration, cylindrical, sheared mouth with tooled ring collar - blowpipe pontil scar, ht. 2 7/8"; (lightly cleaned to original luster and near mint condition; a couple of flakes from the pontil, one with a little iridescence, that do not extend to the edge of the base). C #193. Nice color, deeper than most, excellent character with some whittling and tiny bubbles swirled through the neck and shoulders.

*Est.: \$400 - \$600 • Min. bid: \$200*



### Lot 108

**Teakettle Inkwell**, probably France, 1850 - 1870. Deep cobalt blue, teakettle form with seven recessed panels sloping inward from beveled base edge to top, concave domed top, beveled base with large debossed star, ht. 2", near mint; (a pinhead flake at edge of top, and some minor roughness along the beveled base edge including a hard-to-see, 3/16" bruise on the mold seam that protrudes where the spout connects to the body, original brass collar - no cap). JM #120. Rare.

*Est.: \$250 - \$450 • Min. bid: \$130*



### Lot 112

**"HARRISON'S / COLUMBIAN / INK"**, America, 1847 - 1860. Aquamarine, octagonal body, smooth rounded shoulders, sheared and inward rolled mouth - blowpipe pontil scar, ht. 1 7/8", perfect; (note, there is a small piece of extra glass, near the base, to the right of the "N" in "INK", that adhered to the bottle during manufacture). A nice clean example with a crude lip. C #529.

*Est.: \$100 - \$175 • Min. bid: \$50*



### Lot 113

**"HARRISON'S / COLUMBIAN / INK"**, America, 1847 - 1860. Aquamarine, octagonal body with 8 flat panels around shoulders, sheared and inward rolled mouth - blowpipe pontil scar, ht. 1 1/2", near mint; (just a trace of very faint, light, interior haze in the shoulder, barely noticeable, and a tiny, less than pinhead bit of roughness on one of the base corners, otherwise perfect!) C #530. Scarce small size.

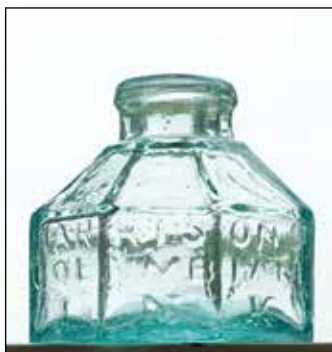
**Est.: \$100 - \$175 • Min. bid: \$50**



### Lot 117

**"HARRISON'S / COLUMBIAN / INK - PATENT"** (on shoulder), **Master Ink Bottle**, America, 1847 - 1860. Light apple green, 12-sided, applied flanged mouth - blowpipe pontil scar, ht. 7 1/4", near mint; (a 1/8" flake on the edge of the flanged lip, otherwise virtually perfect). C #761. This is believed to be the same example that sold back in 2005, and one that very few Harrison's collectors have. An absolutely fantastic example - clean, bright and sparkling, in a scarce size and color.

**Est.: \$400 - \$600 • Min. bid: \$200**



### Lot 114

**"HARRISON'S / COLUMBIAN / INK"**, America, 1847 - 1860. Aquamarine, octagonal body with 8 flat panels around shoulders, sheared and inward rolled mouth - blowpipe pontil scar, ht. 1 7/8", perfect. C #531; MW, plate 76, #12. Another great example, bright and clean with crude wavy glass.

**Est.: \$100 - \$175 • Min. bid: \$50**



### Lot 118

**Early Master Ink Bottle**, New England, possibly a Stoddard glasshouse, 1855 - 1865. Rich amber with yellowish tones through the shoulders shading to a deep amber with some reddish tones near the base, cylindrical, 3-pc. mold, applied sloping collar with lower bevel and crimped, tooled, pour lip - smooth base, ht. 7 3/8", virtually attic mint; (just a little typical faint wear, otherwise perfect). A beautiful example, whittled and filled with tiny bubbles! Provenance: Ex. Judge E.S. MacKenzie collection.

**Est.: \$150 - \$250 • Min. bid: \$80**



### Lot 115

**"HARRISON'S / COLUMBIAN / INK"**, America, 1847 - 1860. Cobalt blue, cylindrical, sheared and inward rolled mouth - blowpipe pontil scar, ht. 2", near attic mint; (faint trace of very light interior residue). C #194. Good depth of color, beautifully whittled glass, a very attractive example.

**Est.: \$400 - \$600 • Min. bid: \$200**



### Lot 119

**"E.S. CURTIS' / INK"** (label-only), **Master Ink Bottle**, a New England glasshouse, 1850 - 1860. Medium olive amber, cylindrical, 3-pc. mold, applied sloping collar - sand type pontil scar, ht. 7"; (the bottle perfect; 98% complete front and back labels, almost certainly original, are faded but remain mostly legible). The colorful carmine and green labels are very attractive.

**Est.: \$150 - \$250 • Min. bid: \$80**



### Lot 116

**"HARRISON'S / COLUMBIAN / INK"** **Master Ink Bottle**, America, 1847 - 1860. Clear, medium cobalt, cylindrical, applied flanged mouth - blowpipe pontil scar, ht. 4", perfect! C #195. A great example, excellent clarity, scarce size, virtually pristine condition!

**Est.: \$700 - \$900 • Min. bid: \$350**



### Lot 120

**"E.S. CURTIS' / INK"** (label-only), **Master Ink Bottle**, a New England glasshouse, 1850 - 1860. Medium olive with strong amber tones, cylindrical, 3-pc. mold, applied sloping collar - iron pontil scar, ht. 7 3/8"; (the bottle is perfect, 99% complete front and back labels, almost certainly original, in beautiful condition). Highly graphic green and dark blue label with the eagle and banner. New old stock Curtis labels have been found, but we believe these to be original to the bottle.

**Est.: \$175 - \$350 • Min. bid: \$90**



**Lot 121**

**Early, Dip Mold Snuff Jar**, New England, 1790 - 1820. Yellowish olive amber, rectangular with wide beveled corners, crudely sheared mouth - delicate blowpipe pontil scar, ht. 4 1/2", virtually perfect; (only the slightest trace of faint wear, otherwise attic mint). A great example, very early, the 'metal' being identical to many of the early chestnut flasks. In addition, outstanding character and eye-appeal with the lopsided shoulders, tiny bubbles, potstones and frothiness.

*Est.: \$400 - \$600 • Min. bid: \$200*

**Lot 125**

**Solid Glass Target Ball Whimsey**, probably Clayton Glass Works, Clayton, NJ, 1880 - 1900. Deep cobalt blue, solid glass doorstop fashioned from a target ball mold. The mold was taken apart and reassembled with the center section removed, then filled with molten glass; ht. 3 3/8"; (some typical usage wear, heavy base wear, otherwise perfect). One of two known examples, the other discovered near the site of the Clayton Glass Works. A very rare, interesting, go-with. Ralph Finch collection.

*Est.: \$400 - \$800 • Min. bid: \$200*

**Lot 122**

**"FROM / J.H. JOHNSTON / GREAT WESTERN GUN WORKS / 169 SMITHFIELD STREET / PITTSBURGH, PA. - RIFLES SHOTGUNS / REVOLVERS AMMUNITION / FISHING TACKLE / CHOKE BORING REPAIRING / & C. / WRITE FOR PRICE LIST", Target Ball**, a Pittsburgh glasshouse, 1880 - 1900. Medium amber, 3-piece mold, rough sheared mouth, dia. 2 5/8", perfect! A very rare and desirable target ball with only a handful known to exist.

*Est.: \$4,000 - \$8,000 • Min. bid: \$2,000*

**Lot 126**

**"HAZELTON'S / HIGH PRESSURE / CHEMICAL / FIRE KEG", America**, 1885- 1900. Golden amber, large figural barrel form, tooled mouth with flat band - smooth base, ht. 10 7/8", virtually attic mint; (very slight trace of light wear, otherwise perfect). Great condition, impressive size, and the only known 'fire grenade' that used the distinctive figural keg form.

*Est.: \$250 - \$350 • Min. bid: \$130*

**Lot 123**

**"GEVELOT - PARIS" Target Ball**, France, 1875 - 1900. Medium amber with a topaz tone, quilted diamond pattern above and below center band, 3-pc. mold, sheared and factory ground mouth, dia. 2 5/8", near mint; (a 3/16" sliver chip on the side of the neck, otherwise perfect). A rare ball in cobalt, and believed to be unique in amber! This, along with the green example, were recently found in a castle in Belgium. See article in the July issue of AB&GC. Ralph Finch collection.

*Est.: \$500 - \$1,000 • Min. bid: \$250*

**Lot 127**

**"GLOBE / TOBACCO COMPANY / DETROIT & / WINDSOR / PAT OCT. 10TH 1882" Tobacco Jar**, America, 1882 - 1900. Clear, light straw yellow coloration, barrel form, threaded neck with ground lip, period, possibly original, tin closure - smooth base, ht. 7 1/4", virtually perfect; (some typical flaking, likely in-manufacture, around edge of lip; tin closure has some light surface rust, otherwise perfect). A gorgeous jar, outstanding light color, strong embossing. A top example.

*Est.: \$200 - \$400 • Min. bid: \$100*

**Lot 124**

**"GEVELOT - PARIS" Target Ball**, France, 1875 - 1900. Beautiful lime green coloration, quilted diamond pattern above and below center band, 3-pc. mold, sheared and factory ground mouth, dia. 2 5/8", perfect! A rare target ball in a gorgeous and unique color for this mold. If you are interested in a rare ball in a unique color, and outstanding condition, this is it! Recently discovered in the attic of a castle in Poperinge, Belgium. Provenance: Ralph Finch collection.

*Est.: \$600 - \$1,200 • Min. bid: \$300*

**Lot 128**

**Lot of (3), "GLOBE / TOBACCO COMPANY / DETROIT / PAT. OCT. 10TH 1882" Tobacco Jars**, 1882 - 1900. Honey amber, golden amber, and medium-to-deep amber, all are barrel form with threaded neck, ground lip, period tin closures -

smooth base, ht. 7"; (all three jars are virtually perfect with just a little typical minor flaking at ground lip, two of the tin closures are in very good condition; third has some significant rust and pitting). A beautiful set of Globe Jars!

*Est.: \$300 - \$500 • Min. bid: \$150*



### Lot 129

“MASON'S / PATENT / NOV. 30TH / 1858”, America, 1880 - 1900. Light-to-medium yellow green, cylindrical, threaded neck with ground lip, zinc lid - “A 9” (above diamond motif), on smooth base, Qt, near mint; (some flakes along the top of the ground lip, possibly in-manufacture; a bit of light haze in the base along with some likely washable minor interior residue). RB# 1787. Nice color, good strength of embossing, most of the noted interior residue will likely wash out.

*Est.: \$200 - \$400 • Min. bid: \$100*



### Lot 133

“MASON / FRUIT JAR”, America, 1905 - 1915. Golden amber, cylindrical, early machine, smooth-lip Mason shoulder seal, threaded “Ball” zinc cap - smooth base, Pt, perfect. RB #1674. Nice color and condition.

*Est.: \$75 - \$125 • Min. bid: \$40*



### Lot 130

“MASON'S / B / PATENT / NOV 30TH / 1858”, America, 1880 - 1900. Aquamarine, cylindrical, threaded neck with ground lip, zinc lid - smooth base, Qt; (a ½” spot of dullness or light wear near the side of the jar, along with a narrow 1/16” band of fine light wear on the reverse and side; a couple of shallow 1/8” flakes on the ground lip, otherwise near mint). RB #1985. A very nice looking beehive jar with strong embossing, the noted condition issues are fairly minor.

*Est.: \$100 - \$200 • Min. bid: \$50*



### Lot 134

“Root / MASON”, Root Glass Co, Terre Haute, IN, 1906 - 1909. Light-to-medium yellow green, cylindrical, early machine, smooth-lip Mason shoulder seal, threaded “ATLAS” zinc cap - smooth base, Pt, near mint; (shallow pinhead flake at edge of lip, otherwise perfect). RB #2510. Good color, excellent condition, strong embossing.

*Est.: \$150 - \$250 • Min. bid: \$80*



### Lot 131

“MASON'S / PATENT / NOV. 30TH / 1858” - “F” (within shield), Fairmount Glass Works, Fairmount, IN, 1889 - 1900. Light amethyst coloration, cylindrical, threaded neck with ground lip, zinc lid - smooth base, Qt; (a touch of light wear, some faint interior residue, and a 3/8” chip on the side of the lip along with ¾” area on the inside edge of the lip with some iridescent flakes or bruises). RB #1850. A scarce and desirable jar, beautiful color.

*Est.: \$300 - \$500 • Min. bid: \$150*



### Lot 135

“INDEPENDENT / JAR”, America, probably Independent Glass Co., Pittsburgh, PA, 1883 - 1889. Colorless, cylindrical, threaded neck with ground lip, “PAT OCT 24 / 1882” on threaded glass cap with two knobs - smooth base, midget Pt, near mint; (some typical flaking around edge of ground lip; lid has a few areas of minor roughness around lower lip, otherwise perfect). RB #1308. A nice example, excellent overall condition. Note; the embossing has been painted for display purposes

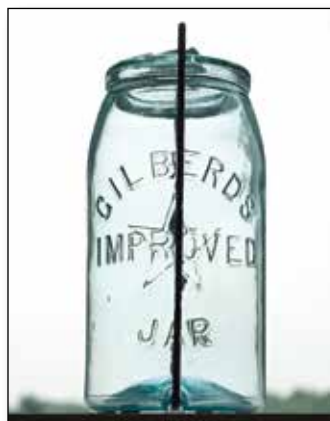
*Est.: \$100 - \$150 • Min. bid: \$50*



### Lot 132

“MASON'S / PATENT / NOV 30 / 1858”, America, 1905 - 1915. Aquamarine with light amber striations swirled throughout the glass, cylindrical, early machine, smooth-lip Mason shoulder seal, threaded “Ball” zinc cap - four large dots (on smooth base), Pt, perfect. RB #1818. A very attractive jar with the light amber swirls, some whittling to the glass, and crisp embossing.

*Est.: \$100 - \$200 • Min. bid: \$50*



### Lot 136

“GILBERDS / IMPROVED (Star) / JAR”, America, 1883 - 1890. Aquamarine, cylindrical, ground lip, wire clamp extending from groove in base, vertically around jar, “GILBERD'S IMPROVED JAR CAP JAMESTOWN, N.Y. / 2 / PAT. JULY 31. 83.” on glass lid - “6” on smooth base, Qt.; (the jar and lid are near mint with just a trace of faint haze, the wire clamp has some rust and pitting). RB #1108.

*Est.: \$200 - \$300 • Min. bid: \$100*



### Lot 137

**"The Ball / PATAPLDFOR"** Fruit Jar, Ball Bros. Glass Manufacturers, Muncie, IN, 1898 - 1899. Aquamarine, cylindrical, ground lip with lightning-type seal, wire bail with tin lid stamped, **"BALL JAR / PAT APLDFOR"** - "4" (on smooth base), Qt; (jar is near mint with just a bit of typical flaking at edge of ground lip; original wire bail has some rust, reproduction tin lid). RB #267-1.

*Est.: \$150 - \$250 • Min. bid: \$80*



### Lot 141

**"WELLS & MILLER / N-Y"** Pickle Jar, America, probably 1841 - 1844. Medium-to-deep blue green, square with beveled corners, applied ring collar - sand type pontil scar, ht. 6 1/8"; near mint; (just a slight trace of minor wear, and a little spotty light interior milkiness or haze, otherwise perfect). Zumwalt, p.428. An extremely rare, early pickle jar. Per Zumwalt, John Wells and Ebenezer Miller established a partnership in 1841, and three years later, combined with Stephen Provost.

*Est.: \$800 - \$1,200 • Min. bid: \$400*



### Lot 138

**Lot of (3), "Ball / PERFECT / MASON"** Fruit Jars, Ball Bros. Glass Manufacturers, Muncie, IN, 1915 - 1923. All are 'Ball blue', cylindrical, ABM, threaded neck with bead seal, zinc caps, half pints, all are near mint; (one example has a couple of tiny 1/8" flakes at rim; one example has a 1/4" iridescent bruise on the neck threads, 3rd example has a tiny pinhead bit of roughness on the shoulder seal, mentioned for complete accuracy). RB #274.

*Est.: \$200 - \$300 • Min. bid: \$100*



### Lot 142

**"I. R."** Fancy Pickle Jar, probably 1847 - 1862. Aquamarine, unusual bell form with large flutes around base, ring neck, sheared mouth with an applied ring collar - heavy iron pontil scar, ht. 6 3/8"; near mint; (a 1/8" flake, as well as a 1/2" area of roughness along the top edge of the lip, possibly in-manufacture, otherwise virtually perfect). Zumwalt, p.346 (this is the actual jar pictured). Isaac Rechow was a pickler in NYC. An extremely rare jar, attractive form, crude and beautifully whittled.

*Est.: \$300 - \$600 • Min. bid: \$150*



### Lot 139

**"ADAMS. ALLISON & CO. / MANUFACTURERS. / MIDDLEBURY SUMMIT CO. O."** (debossed above base), **Stoneware Preserve Jar**, 1870 - 1885. Tan glaze, cylindrical, wax seal groove, 1/2 Gallon, virtually perfect; (a 3/16" chip on underside of base edge, otherwise mint). RB #16-8. A great example, about as nice as you could hope to find with a perfect, undamaged, wax seal rim, no hairline cracks, and very strong, crisp debossing (most examples having rather weak lettering).

*Est.: \$120 - \$240 • Min. bid: \$60*



### Lot 143

**"H S"** (on base), **Fancy Pickle Jar**, 1850 - 1860. Light-to-medium apple green, square with rounded corners, fluted bulbous neck, sheared and outward rolled mouth - iron pontil scar, ht. 9 1/2"; (lightly cleaned to original luster with a little light overall dullness remaining, but no other form of damage). Rare. Zumwalt, p.355 (this is the actual jar pictured). Likely blown for Henry Scott, a NYC pickler, 1842 - 1877. Nice light green coloration, heavily whittled. Ex. Larry and Joselyn Brown collection.

*Est.: \$300 - \$600 • Min. bid: \$150*



### Lot 140

**"SMOKINE - SMOKINE - IMPORTED AND BOTTLED / BY / ALFRED ANDRESEN & CO / THE WESTERN IMPORTERS. / MINNEAPOLIS, MINN. / AND / WINNIPEG, MAN."** (with partial original labels and neck foil), 1895 - 1905. Golden amber, cabin form, tooled square collar - smooth base, ht. 6 3/4"; (bottle is perfect, original labels approximately 80 - 90% complete). A great figural cabin bottle that held a liquid extract for the flavoring and preservation of meat.

*Est.: \$200 - \$400 • Min. bid: \$100*



### Lot 144

**"CASPER'S WHISKEY / MADE BY HONEST / NORTH / CAROLINA PEOPLE"**, America, 1885 - 1900. Rich, medium-to-deep cobalt blue, cylindrical with fluted shoulders, tooled sloping collar with ring - smooth base, ht. 12", perfect. A beautiful example, rich color with some slight violet tones in the neck and base. One of the great bottle collecting classics, and a big splash of color that will stand out on a shelf!

*Est.: \$400 - \$500 • Min. bid: \$200*

A Kaleidoscope  
of Beautiful, Boston Area  
Cologne & Toilet Water Bottles  
From the Robert Irons  
Collection



Lot 86

Lot 78

Lot 83

Lot 82

Lot 93

Lot 80

Lot 89

Many of the types of bottles shown here were produced in large quantities in the Boston area from the 1860s through the 1880s, and would have originally had paper labels affixed identifying their contents as either perfume or toilet water. They were blown in a great variety of molds and colors and those represented here vary from common to rare.

Because of the spectrum of gem-like colors, elegant forms and multiple sizes, they have long been a popular collecting category. Fortunately, a good number of them still exist and most can be had for a reasonable sum.

The early lithograph shown in the background depicts the American Flint Glass Works of South Boston which was the source of many of these beautiful bottles.



Lot 94  
(1 of 2)

Lot 79

Lot 92

Lot 81

Lot 90

Lot 95



### Lot 145

"UNION GLASS WORKS CT." (on base), **Whiskey Cylinder**, New London, CT, probably 1859 - 1863. Medium olive green, cylindrical, 3-pc. mold, applied sloping collar with ring - smooth base, ht. 11 3/8", near mint; (some scattered light wear and a bit of residue in the shoulder, otherwise perfect). An extremely rare base-embossed, glasshouse whiskey cylinder. These just don't come up! A great example, overall excellent condition, strong embossing. Robert Irons collection.

*Est.: \$1,000 - \$2,000 • Min. bid: \$500*



### Lot 149

"CHARLES' - LONDON - CORDIAL GIN", America, 1865 - 1875. Bright yellowish green, square with beveled corners, applied sloping collar - smooth base, ht. 7 7/8", near mint; (a 2" x 1" area on the side panel has a little spotty dullness or faint etching, likely where a small rectangular label once was, otherwise only a trace of wear and virtually perfect). A beautiful example, fantastic color, excellent character and condition.

*Est.: \$200 - \$400 • Min. bid: \$100*



### Lot 146

"FORT TRUMBULL GLASS CO" (on base), **Whiskey Cylinder**, New London, CT, 1865 - 1868. Medium amber, cylindrical, 3-pc. mold, applied sloping collar with ring - smooth base, ht. 11 1/4"; (some light interior residue that would likely wash out; a little roughness at edge of base including a couple of flakes, 3/16" or less, and a few little pinhead bruises, otherwise excellent). A very rare glasshouse embossed whiskey cylinder. Provenance: Robert Iron collection.

*Est.: \$300 - \$600 • Min. bid: \$150*



### Lot 150

"BININGER'S / PEEP-O'-DAY. / No. 19 / BROAD ST N.Y.", America, probably 1861 - 1863. Bright, medium honey amber, oval flask form, applied double ring collar - smooth base, ht. 7 3/4", very near mint; (lightly cleaned or original luster and virtually pristine condition). BPK-36. These don't come around often. A beautiful example, clean, bright, outstanding condition, very scarce.

*Est.: \$500 - \$800 • Min. bid: \$250*



### Lot 147

**Early New England Whiskey Flask**, a Stoddard, NH glasshouse, possibly New Granite Glass Works, 1860 - 1870. Yellowish 'old amber', horse-shoe form, applied double ring collar - smooth base, ht. 9", Qt; (some high point wear and a few scattered light scratches, otherwise near mint). See, *On the Trail of Stoddard Glass*, Field, p.56. Scarce size, nice color, heavily whittled.

*Est.: \$175 - \$350 • Min. bid: \$90*



### Lot 151

"A.M. BININGER & CO. / No. 19 BROAD ST / NEW-YORK" **Applied Handle Whiskey**, America, probably 1861 - 1863. Golden amber, cylindrical with conical shoulders, applied handle curled at lower attachment, applied double ring collar - smooth base, ht. 7 7/8"; (professionally cleaned to original luster, and just a touch of minor wear at the edge of the shoulder on the reverse, otherwise virtually perfect). BPK-31. A bright, clean example, and a little lighter in tone.

*Est.: \$250 - \$400 • Min. bid: \$130*



### Lot 148

Lot of (2), **GALWAY / NEW YORK Spirits Bottles + Trade Card**, 1875 - 1885. "JOS. N. GALWAY / NEW YORK", honey amber shading to a rich orange amber, flask form, tooled double ring collar, 1/2 Pt; (two, tiny, 1/8" annealing lines in the body, otherwise very near mint). 2nd Ex. "JOSEPH. N. GALWAY / NEW YORK", bright honey coloration, square with beveled corners, applied sloping collar - smooth base, ht. 8 3/4", virtually attic mint. A beautiful set, the square Galway is rare!

*Est.: \$300 - \$600 • Min. bid: \$150*



### Lot 152

"R.B. CUTTER / LOUISVILLE, KY" **Applied Handle Whiskey**, America, 1850 - 1860. Bright honey coloration through the center shading to a golden amber through the neck and base, ovoid form, applied handle curled at lower attachment, applied blob collar - blowpipe pontil scar, ht. 8 1/2"; (lightly cleaned to original luster, and an onionskin-thin open bubble on the reverse, otherwise very near mint). A pretty example, heavily whittled, crisp, strong embossing.

*Est.: \$250 - \$400 • Min. bid: \$130*



### Lot 153

**“J.F.T. & Co. / PHILAD.” Applied Handle Whiskey, America, 1850 - 1860.** Amber shading to deep amber with a slight orange tone through the neck, bulbous pear form with 26 melon-type vertical ribs, applied handle crimped and curled at lower attachment, applied round double collar - blowpipe pontil scar, ht. 7”, perfect! A scarce handled whiskey with a good impression, absolutely no handle attachment issues, and almost no wear.

*Est.: \$400 - \$600 • Min. bid: \$200*



### Lot 157

**“BROWN’S / CELEBRATED / INDIAN HERB BITTERS - PATENTED / 1868”**, 1868 - 1875. Very deep amber, almost a chocolate coloration, figural Indian maiden, sheared tooled lip - smooth base, ht. 12 1/8”, virtually perfect; (a small 1/8” open bubble on the interior of the neck mentioned for complete accuracy, otherwise attic mint). R/H #B225. A rare and desirable color for a “Queen”, one that does not come around often. Provenance: Ex. Jack Stecher collection.

*Est.: \$1,200 - \$1,800 • Min. bid: \$600*



### Lot 154

**“OLD WHEAT / S.M & CO / WHISKEY” (within molded oval seal)**, America, 1855 - 1865. Rich, yellowish ‘old amber’, large, bulbous pear form, 3 horizontal rings at base and neck, applied sloping collar with bevel - blowpipe pontil scar, ht. 10 3/4”, near mint; (a 1/8” flake at edge of lip, otherwise virtually perfect!) A very scarce-to-rare early whiskey, the larger of the two known sizes, heavily whittled and with some large bubbles scattered through the glass.

*Est.: \$400 - \$600 • Min. bid: \$200*



### Lot 158

**“NATIONAL / BITTERS” - “PATENT / 1867”** (on base), 1867 - 1875. Gorgeous, bright medium yellow coloration with just a slightly deeper honey tone in the collar, figural ear of corn, applied short tapered collar with ring - smooth base, ht. 12 1/2”, perfect! R/H #N8. An absolutely fantastic example, outstanding color and eye-appeal, excellent clarity from top-to-bottom, attic mint condition. Beautiful!.

*Est.: \$1,500 - \$2,500 • Min. bid: \$800*



### Lot 155

**“MOHAWK WHISKEY / PURE / RYE - PATENTED / FEB. 11 / 1868”**, 1868 - 1875. Bright honey coloration in the lower half, deep honey through the waist, shading to an almost yellow coloration from the chest through the headdress, figural Indian maiden, sheared, tooled, inward rolled lip - smooth base, ht. 12 1/4”, near mint; (a 3/16” area of roughness or flaking on the inward rolled mouth, likely occurring when the cork was pried out, otherwise pristine perfect).

*Est.: \$2,000 - \$4,000 • Min. bid: \$1,000*



### Lot 159

**“NATIONAL / BITTERS” - “PATENT / 1867”** (on base), 1867 - 1875. Beautiful honey amber, almost a yellowish amber through the center, figural ear of corn, applied short tapered collar with ring - smooth base, ht. 12 1/4”, virtually perfect; (tiny, less than a pinhead speck of roughness on the edge of the lip, and a tiny pinhead flake on the leaf on the reverse, otherwise attic mint). R/H #N8. A great example, very attractive lighter color.

*Est.: \$400 - \$600 • Min. bid: \$200*



### Lot 156

**“BROWN’S / CELEBRATED / INDIAN HERB BITTERS - PATENTED / FEB 11 / 1868”**, 1868 - 1880. Beautiful two-tone coloration with a bright honey color from the waist to the headdress, and a rich orange-amber from the waist to the base, figural Indian maiden, sheared and tooled lip - smooth base, ht. 12 1/8”, attic mint; (note; a shallow 1/8” flake at edge of lip that is fire-polished and occurred in-making). R/H #B226. Unusual with a marked “dividing line of color”.

*Est.: \$1,000 - \$1,500 • Min. bid: \$500*



### Lot 160

**“NATIONAL / BITTERS” - “PATENT / 1867”** (on base), 1867 - 1875. Medium amber, figural ear of corn, applied short tapered collar with ring - smooth base, ht. 12 1/4”; (lightly cleaned to original luster and near mint condition with just a trace of minor wear remaining). R/H #N8. A nice example that, despite the light cleaning, exhibits as near mint! One of the classics in figural bitters.

*Est.: \$250 - \$400 • Min. bid: \$130*



### Lot 161

**"DINGEN'S / NAPOLEON COCKTAIL BITTERS - DINGENS BROTHERS / BUFFALO N.Y."**, 1858 - 1865. Colorless with a slight smoky tone, figural drum with a lady's leg neck, applied sloping collar - heavy iron pontil scar, ht. 10 1/8", near mint; (a little light exterior wear and a bit of minor roughness at the mold seam from in-making glass extrusion). R/H #N3. Eye-appealing variant with the pedestal base, excellent character, and in a rare and desirable color!

*Est.: \$4,000 - \$8,000 • Min. bid: \$2,000*



### Lot 165

**"JOHN. W. STEELE'S / NIAGARA (STAR) BITTERS" - "JOHN. W. STEELE'S / NIAGARA. STAR. BITTERS" - EAGLE - "1864" - STAR - STAR - STAR**, 1864 - 1875. Rich, medium to deep amber with some lighter golden tones along the corners, applied short tapered collar with band - smooth base, ht. 10"; (the bottle may have been lightly cleaned, but presents itself as virtually pristine perfect). R/H #S183. A great example of this scarce, popular, western NY bitters.

*Est.: \$600 - \$900 • Min. bid: \$300*



### Lot 162

**"AMERICAN LIFE / BITTERS - P.E. ILLER / MANUFACTURER / OMAHA, NEB - AMERICAN LIFE / BITTERS"**, 1865 - 1875. Deep amber, rectangular cabin form, applied sloping collar - smooth base, ht. 8 7/8"; (professionally cleaned to original luster with some fine light wear remaining, and a little minor abrasion on a couple of log corners, otherwise excellent; some in-manufacture crazing lines on the inside edge of the lip mentioned for complete accuracy). R/H #A48. Extremely rare!

*Est.: \$4,000 - \$8,000 • Min. bid: \$2,000*



### Lot 166

**"WAHOO / & / CALISAYA / BITTERS - JACOB PINKERTON - JACOB PINKERTON - I.M. - O.K. - Y!! - Y !!!"**, America, 1870 - 1880. Golden amber, square, semi-cabin form with columned corners, tooled sloping collar with ring - smooth base, ht. 9 5/8", attic mint! R/H #W3. A great looking example of this very scarce bitters. Clean, bright, fantastic condition!

*Est.: \$700 - \$1,200 • Min. bid: \$350*



### Lot 163

**"S T / DRAKE'S / 1860 / PLANTATION / X / BITTERS - PATENTED / 1862"**, 1862 - 1880. Beautiful medium yellow coloration with a very slight honey tone, cabin form with 6-logs above the label panel, applied sloping collar - smooth base, ht. 10", virtually perfect; (a slight bit of barely noticeable content residue in shoulder, and a 1/4" partially open interior bubble near a back base corner). R/H #D106. Virtually identical in color to the yellow example we sold in the March sale.

*Est.: \$1,500 - \$2,500 • Min. bid: \$800*



### Lot 167

**"ROMAINE'S - CRIMEAN - BITTERS - PATENT 1863 - W. CHILTON & Co"**, America, 1863 - 1875. Light golden or honey coloration, square, semi-cabin form with columned corners, applied sloping collar - smooth base, ht. 10", virtually perfect; (a tiny pinhead flake on the inside edge of the lip, and a bit of very faint interior content residue, otherwise attic mint). R/H #R86. Per Ring / Ham, this is the earlier of the two variants. Rare. Provenance: Ex. Sydney Genius collection.

*Est.: \$600 - \$900 • Min. bid: \$300*



### Lot 164

**"S T / DRAKE'S / 1860 / PLANTATION / X / BITTERS - PATENTED / 1862"**, 1862 - 1880. Medium-to-deep apricot with some rich salmon tones through the lower half of the bottle, cabin form with 6-logs above the label panel, applied sloping collar - smooth base, ht. 9 3/4", virtually attic mint; (just a slight trace of light wear including a minor, 1/8", onionskin-thin open bubble at the edge of the roof, otherwise perfect). R/H #D106. Another beautiful example of a Drake's, fantastic condition.

*Est.: \$500 - \$1,000 • Min. bid: \$250*



### Lot 168

**(ANCHOR motif) - (ANCHOR motif) - (ANCHOR motif) - (ANCHOR motif)** on all four roof panels, **Bitters Bottle**, 1880 - 1885. Bright honey shading to almost a yellow coloration below the shoulders, square, semi-cabin form with rounded corners, applied sloping collar - smooth base, ht. 10 1/8", virtually attic mint; (some in-manufacture crazing lines in the neck mentioned for complete accuracy). R/H #D122L. A very pretty, light, example of this scarce bottle that held Dr. Dunlap's Anchor Bitters.

*Est.: \$250 - \$450 • Min. bid: \$130*





### Lot 169

(Image of a Black Man Holding a Bottle) / "PHILADELPHIA / HOP BITTERS", Australia, 1880 - 1890. Greenish aquamarine, square, semi-cabin form, applied sloping collar - smooth base, ht. 9 1/2"; (professionally cleaned to original luster with a little scattered wear and some light scratches remaining, otherwise excellent). R/H #P89. A very scarce pictorial bitters. Provenance: Ex. Carlyn Ring collection.

*Est.: \$300 - \$500 • Min. bid: \$150*



### Lot 173

"SCHROEDER'S / BITTERS / LOUISVILLE, KY.", Streator Bottle & Glass Co., Streator, IL, 1881 - 1895. Medium-to-deep amber, cylindrical with a lady's-leg neck, tooled sloping collar with ring - "S B & G Co" (on smooth base), ht. 8 7/8"; (professionally cleaned to original luster with a little minor wear remaining including a 1/8" spot of abrasion or flake below the "R" in "SCHROEDER'S"; a small patch of faint interior haze, otherwise excellent). R/H #S65. Scarce.

*Est.: \$200 - \$400 • Min. bid: \$100*



### Lot 170

"PANACEA / BITTERS - FRANK HAYMAN & RHINE - SOLE PROPRIETORS - NEW YORK", 1870 - 1880. Golden amber, almost a honey coloration, figural lighthouse, applied sloping collar with ring - smooth base, ht. 10"; (professionally cleaned to original luster with some minor imperfections remaining including a tiny potstone with a small 'fisheye'-type bruise, on the "K" in "YORK", on the reverse). R/H #F79. A very scarce figural. FOHBC Lexington National Auction, 2014.

*Est.: \$1,200 - \$1,800 • Min. bid: \$600*



### Lot 174

"SCHROEDER'S / BITTERS / LOUISVILLE, KY.", Streator Bottle & Glass Co., Streator, IL, 1881 - 1895. Medium amber, cylindrical with a lady's-leg neck, tooled sloping collar with ring - "S B & G Co" (on smooth base), ht. 11 1/2"; (professionally cleaned with some scattered light wear remaining and a 1/4" chip at edge of base on the reverse). R/H #S65. The taller 'big brother' to the preceding lot.

*Est.: \$200 - \$400 • Min. bid: \$100*



### Lot 171

"W & Co / N.Y." Figural Pineapple Bitters, America, 1855 - 1865. Medium amber, pineapple form, applied round double collar - blowpipe pontil scar, ht. 8 3/8"; (just a touch of typical minor wear, and some overall interior haze or cloudiness, but no other form of damage). R/H #P100. The Pineapple Bitters are always popular. The marked "W & Co / N.Y." examples are very scarce. With just a few days in the tumbler, this one would likely present as near perfect.

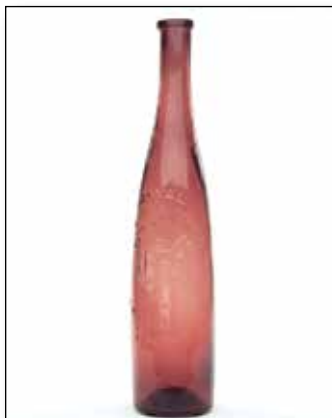
*Est.: \$300 - \$500 • Min. bid: \$150*



### Lot 175

"ESTABLISHED / 1845 / SCHROEDER'S / BITTERS / LOUISVILLE / AND CINCINNATI", Streator Bottle & Glass Co., Streator, IL, 1881 - 1895. Medium amber, cylindrical with a lady's-leg neck, tooled sloping collar with ring - "S B & G Co" (on smooth base), ht. 11 1/2"; (professionally cleaned to original luster with just a little light wear remaining including a small pinhead bruise at edge of base, otherwise excellent). R/H #S68. Strong, crisp embossing. Scarce.

*Est.: \$250 - \$450 • Min. bid: \$130*



### Lot 172

"ROYAL / ITALIAN BITTERS / REGISTERED" (Crown, Shield & Flags) / "TRADE MARK / A.M.F. GIANELLI / GENOVA", Canada, 1870 - 1880. Beautiful medium pinkish-amethyst, cylindrical, applied square collar - smooth base, ht. 13 1/2"; (just a slight trace of faint wear, otherwise virtually perfect). R/H #R111. Fantastic color and eye-appeal, beautiful condition, a great example. A very pretty color that will definitely stand out, and one that is not easy to find in a bitters.

*Est.: \$700 - \$1,200 • Min. bid: \$350*



### Lot 176

"ZINGARI / BITTERS - F. RAHTER.", America, 1865 - 1875. Golden amber, cylindrical with lady's-leg neck applied collar with flat band - smooth base, ht. 12"; (just a touch of light wear and a couple of spots of minor roughness, 1/8" or less, on the edge of the lip, otherwise near mint). R/H #Z4. A nice whittled example of this Philadelphia 'lady's-leg' bitters.

*Est.: \$200 - \$400 • Min. bid: \$100*



### Lot 177

**"THE GREAT TONIC / DR CALDWELL'S / HERB BITTERS"**, America, 1865 - 1875. Bright honey amber, triangular pyramid form with 16 squares in lattice panel, applied sloping collar with ring - smooth base, ht. 12 5/8"; (only a slight trace of minor wear and an onionskin-thin small open surface bubble, 1/4", near the base, otherwise pristine perfect). Similar to R/H #C9 (with "DR" embossed), but with 16 squares in the lattice panel. Beautiful color, lighter than most!

*Est.: \$200 - \$400 • Min. bid: \$100*



### Lot 178

**"MORNING" (STAR) "BITTERS" / "INCEPTUM 5869 - PATENTED / 5869"**, America, 1870 - 1880. Beautiful golden amber, almost a honey coloration, triangular pyramid form, tooled sloping collar - smooth base, ht. 12 7/8", attic mint! R/H #M135. A very pretty example, bright, clean, sparkling, and in virtually pristine condition.

*Est.: \$200 - \$400 • Min. bid: \$100*



### Lot 179

**"MORNING" (STAR) "BITTERS" / "INCEPTUM 5869 - PATENTED / 5869"**, America, 1855 - 1865. Medium amber, triangular pyramid form, applied sloping collar - heavy iron pontil scar, ht. 12 5/8", virtually perfect; (only a trace of very faint wear, otherwise pristine). R/H #M135. Another great example, beautiful condition. Note; retains most of its original neck foil.

*Est.: \$250 - \$450 • Min. bid: \$130*



### Lot 180

**"JNo. MOFFAT - PHOENIX / BITTERS - PRICE \$ 1 - NEW YORK"**, 1840 - 1855. Medium-to-deep olive with a slight amber tone, rectangular with beveled corners, applied ring-type collar - blowpipe pontil scar, ht. 5 5/8"; (a 1/2" horizontal hairline crack at one of the beveled corners, otherwise virtually attic mint). R/H #M110. A great looking example, bold embossing! Provenance: Ex. Charles B. Gardner collection (#2936). Note; bottle was sold in the Gardner sale with crack.

*Est.: \$200 - \$400 • Min. bid: \$100*



### Lot 181

**"HARTERS / WILD CHERRY / BITTERS" Advertising Corkscrew**, America, probably 1897 - 1905. Sides embossed, **"CHAMPION - CHAMPION / PAT. PENDING."** (Leaves and Vines). Nickel plated cast iron, brass nameplate, countertop clamp, flanged clamp to grip bottle, wooden handle and lever, ht. 9 1/8"; (some minor surface pitting and patina, a majority of the nickel plating is worn off, otherwise excellent condition, and appears to be in working order). R/H, p.266. Very rare!

*Est.: \$200 - \$400 • Min. bid: \$100*



### Lot 182

**"DOCTOR GREGORYS / SCOTCH BITTERS"**, probably Illinois Glass Co, Alton, IL, 1875 - 1885. Medium amber with some golden tones, square with beveled corners, applied sloping collar - "I G C O" (on smooth base), ht. 9 1/4", very near mint, (a minuscule little pinhead flake on the back edge of the lip, barely noticeable, otherwise virtually perfect) R/H #G113. An extremely rare bitters from Minneapolis, MN, nice crude glass, outstanding condition.

*Est.: \$700 - \$900 • Min. bid: \$350*



### Lot 183

**Lot of (3), "DR CAMPBELL'S / SCOTCH BITTERS"**, America, 1885 - 1895. Golden amber, light honey coloration, and yellow, all three are strap-side flask form, tooled double ring collar - smooth base, 1/2 Pt, all are virtually attic mint; (the golden amber ex. may have been lightly cleaned, but is otherwise virtually perfect - as are the other two, yellow ex. has a pinhead bit of roughness on the back edge of the lip). R/H #C31. The slugplate yellow example is extremely rare, and a gorgeous color!

*Est.: \$800 - \$1,600 • Min. bid: \$400*



### Lot 184

**"OROLO BITTERS - AUG KNOEFEL"**, William McCully & Co, Pittsburgh, PA, 1870 - 1880. Medium amber, square with beveled corners, applied sloping collar - **"W McC & Co"** (on smooth base), ht. 9", near mint; (just a trace of faint wear including a pinhead open bubble, and a bit of light interior content residue). R/H #O89. An extremely rare bitters from New Albany, IN (a small town in southern Indiana, across the river from Louisville, KY). Ex. Judge MacKenzie collection.

*Est.: \$400 - \$800 • Min. bid: \$200*



### Lot 185

**"DR A. H. SMITHS / OLD STYLE BITTERS - O. S / 2781"**, America, 1870 - 1880. Medium honey amber, square with beveled corners, applied sloping collar - smooth base, ht. 8 3/4", very near mint; (a partially open bubble on the inside of the neck with some trapped residue, otherwise perfect). R/H #S127. Scarce. A beautiful example, nice color, clean and bright, excellent condition.

*Est.: \$250 - \$450 • Min. bid: \$130*



### Lot 189

**"STEKETEE'S BLOOD / PURIFYING BITTERS"**, America, 1885 - 1895. Golden amber, square with beveled corners, tooled sloping collar with ring - smooth base, ht. 6 3/4", near mint; (the bottle may have been lightly cleaned, but appears as virtually perfect; some in-manufacture crazing lines around the top of the lip mentioned for complete accuracy). R/H #S188. A great example of this very scarce bitters listed as "Rare" in the Ring / Ham book.

*Est.: \$150 - \$250 • Min. bid: \$80*



### Lot 186

**"HOME BITTERS - JAS A. JACKSON & Co. / PROPRIETORS - SAINT LOUIS, MO."**, America, 1870 - 1880. Medium amber, square with beveled corners, applied sloping collar - "1" (on smooth base), ht. 9 1/8"; (just a touch of minor wear and a couple of small wisps of faint interior milkiness, barely noticeable, otherwise attic mint). R/H #H158. A nice example of this popular St. Louis bitters, and one of many different molds that the company put out.

*Est.: \$100 - \$200 • Min. bid: \$50*



### Lot 190

**"STEKETEE'S BLOOD / PURIFYING BITTERS"**, America, 1885 - 1895. Medium-to-deep amber below the shoulders shading to a dense reddish amber in the lower third of the bottle, square with beveled corners, tooled sloping collar with ring - smooth base, ht. 9 1/2", near mint; (just a slight trace of light wear and a tiny pinhead iridescent bruise on the edge of the lip, otherwise excellent). R/H #S187.5. A very scarce bitters, and likely rare in this unusually deep color.

*Est.: \$150 - \$250 • Min. bid: \$80*



### Lot 187

**"DR STOEVEER'S / BITTERS - ESTABLISHED 1837 - KRYDER & Co / PHILADELPHIA"**, America, 1875 - 1885. Bright honey coloration, square with beveled corners, applied sloping collar - smooth base, ht. 9 1/2"; (just a slight trace of minor wear, and a patch of light haze on the side panel below the word "Established", otherwise very near mint). R/H #S199. A very nice example of this scarce bitters. Provenance: Ex. Dan Murphy collection.

*Est.: \$200 - \$400 • Min. bid: \$100*



### Lot 191

**"STRASSBURGER / KRAUTER BITTER"**, A. & D. H. Chambers, Pittsburgh Glass Works, Pittsburgh, PA, 1875 - 1885. Golden amber, square with beveled corners, applied sloping collar - **"A & D H C"** (on smooth base), ht. 9", near mint; (just a trace of minor wear including a couple of faint scratches, and a little spotty light interior residue or faint haze, otherwise perfect). R/H #S210. Very scarce. Believed to be only the 2nd or 3rd example at auction in more than 20 years!

*Est.: \$200 - \$400 • Min. bid: \$100*



### Lot 188

**"ST GOTTHARD HERB BITTERS / METTE & KANNE PROS / ST LOUIS, MO"**, a Midwest glasshouse, possible Modes Glass Co., Cicero, IN, 1890 - 1900. Medium amber with a slight golden tone, square with beveled corners, applied sloping collar - "M.G. Co" (on smooth base), ht. 8 7/8"; (just a slight trace of minor wear including a light scratch on one of the side panels, otherwise virtually attic mint). R/H #S12. A very nice example having a little character and crudity to the glass.

*Est.: \$100 - \$200 • Min. bid: \$50*



### Lot 192

**"DR. PETZOLD'S / GENUINE / GERMAN / BITTERS / INCPT 1862 / THE / GREAT / ELIXIR / OF LIFE - PAT'D 1884"**, 1884 - 1895. Beautiful light honey coloration shading to a bright orange amber through the neck, oval, tooled sloping collar with ring - smooth base, ht. 6 7/8"; (professionally cleaned to original luster with just a bit of scattered minor haze, or light matte-type dullness remaining, but no other damage). R/H #P77. A rare mold, beautiful color, crisp embossing.

*Est.: \$150 - \$300 • Min. bid: \$80*



### Lot 193

**"CONSTITUTIONAL / BEVERAGE - W. OLMSTED & CO. - NEW YORK."**, America, probably 1869 - 1875. Beautiful yellowish honey coloration, rectangular semi-cabin form, large applied square collar - smooth base, ht. 10 1/4"; (some wear and minor abrasion along one of the beveled corners, a 1" scratch on the front label panel, and a bit of light haze in one of the back corners). R/H #C224L. An absolutely beautiful, eye-appealing, example. The noted condition issues are fairly minor.

*Est.: \$250 - \$450 • Min. bid: \$130*



### Lot 194

**"CONSTITUTIONAL / BEVERAGE - W. OLMSTED & CO. - NEW YORK."**, America, probably 1869 - 1875. Golden amber, rectangular semi-cabin form, large applied square collar - smooth base, ht. 10 1/8"; (professionally cleaned to original luster with some scattered light scratches and minor wear remaining, otherwise excellent). R/H #C224L. A scarce and attractive mold. This one is a nice compliment to the preceding lot.

*Est.: \$175 - \$350 • Min. bid: \$90*



### Lot 195

Lot of (2), **"DR LOEW'S CELEBRATED / STOMACH BITTERS & / NERVE TONIC - THE / LOEW & SONS CO. / CLEVELAND, O."** Bottles, 1890 - 1900. Yellowish citron and medium lime green. Both are square with rounded corners, tooled sloping collar - smooth base, ht. 9 1/8" & 9 1/4" respectively; (both professionally cleaned with a bit of minor wear remaining, very minor roughness on lip; citron ex. has a tiny 1/8" cooling line in a corner). R/H #L111.

*Est.: \$300 - \$500 • Min. bid: \$150*



### Lot 196

**"F. BROWN BOSTON / SARSAPARILLA / & TOMATO / BITTERS"**, America, 1850 - 1860. Aquamarine, oval, applied sloping collar with bevel - blowpipe pontil scar, ht. 9 1/4", near mint; (some very faint interior haze or dullness, barely noticeable, and a few faint scratches on the reverse, otherwise perfect). R/H #S36. A very nice example, crisp embossing, excellent character, beautifully whittled. Provenance: Ex. Carlyn Ring collection.

*Est.: \$200 - \$400 • Min. bid: \$100*



### Lot 197

**"DR. / MANLY HARDY'S - GENUINE - JAUNDICE / BITTERS - BANGOR ME"**, America, 1845 - 1860. Aquamarine, rectangular with wide beveled corners, applied sloping collar - blowpipe pontil scar, ht. 7", attic mint! R/H #35. Noted as "Scarce" by Ring / Ham, this example has nice crude glass, and is clean, bright, and sparkling.

*Est.: \$200 - \$400 • Min. bid: \$100*



### Lot 198

Lot of (2), Pontiled Bitters, 1845 - 1860. **"DR SKINNER'S - CELEBRATED / 25 Cent BITTERS - SO. READING MASS"**, and: **"S.O. / RICHARDSON'S - BITTERS - SOUTH / READING - MASS"**. Both are aquamarine, rectangular with beveled corners, applied ring collar and thin flanged lip - blowpipe pontil scarred bases, ht. 8 5/8" and 6 1/2"; (Skinner's has a 5/16" flake on inside edge of lip, otherwise perfect; Richardson's has a little faint interior haze, otherwise perfect). R/H #S115 & R57.

*Est.: \$200 - \$400 • Min. bid: \$100*



### Lot 199

Lot of (2), Pontiled Bitters, 1850 - 1860. **"ATWOOD'S - JAUNDICE BITTERS - MOSES ATWOOD - GEORGETOWN, MASS."**, and: **"OXYGENATED - BITTERS - FOR / DYSPEPSIA / ASTHMA & GENERAL DEBILITY"**. Both are aqua, 12-sided and rectangular, applied square collar and sloping collars - blowpipe pontil scarred bases, ht. 6 1/8" and 7 3/8", both virtually perfect; (2nd Ex. has tiny pinprick bit of roughness on lip). R/H #A116 & O99. Both are bright, clean, sparkling examples!

*Est.: \$175 - \$350 • Min. bid: \$90*



### Lot 200

Lot of (2), Bitters Bottles, 1865 - 1880. **"JOHN A PERRY / DR WARREN'S / BILIOUS BITTERS / BOSTON MASS"**, and: **"WHEELER'S / GENUINE / BITTERS"**. Both are aquamarine, oval, applied square collar and sloping collars - smooth base, ht. 7 5/8" and 9 3/8"; (the Dr. Perry's is perfect; the Dr. Wheeler's has a tiny 1/8" flake at edge of base, otherwise very near mint). R/H #W44 & W85. Nice examples, the Perry example is scarce, sparkling, and attractive.

*Est.: \$150 - \$250 • Min. bid: \$80*



### Lot 201

**"DR TOWNSENDS - SARSAPARILLA - NEW YORK."**, 1850 - 1860. Light green with an emerald tone, square with beveled corners, applied sloping collar - heavy iron pontil scar, ht. 9 3/4"; (professionally cleaned to original luster with some faint light haze remaining, a tiny pinprick speck of roughness on the lip, otherwise excellent). This is the variant with periods after "NEW" and "YORK". The noted light haze is not terribly distracting. Displays very nicely, and is heavily whittled.

*Est.: \$400 - \$600 • Min. bid: \$200*



### Lot 202

**"OLD DR / J. TOWNSENDS - SARSAPARILLA - NEW YORK"**, America, 1860 - 1870. Clear, bluish aquamarine, almost a light blue green, square with beveled corners, applied sloping collar - smooth domed base, ht. 9 1/2", near mint; (a little faint haze in the shoulder area, and a small shallow bubble on the shoulder with a pinhead opening in the surface glass). Nice light color, excellent clarity from neck-to-base. Note; this is the square shoulder variant.

*Est.: \$175 - \$350 • Min. bid: \$90*



### Lot 203

**"OLD DR / J. TOWNSENDS - SARSAPARILLA - NEW YORK"**, America, 1860 - 1870. Bright, rich, medium blue green, square with beveled corners, applied sloping collar - smooth domed base, ht. 9 1/2", attic mint. This one is clean as a whistle and has that extra 'little something', in this case, being the bright rich color, heavy sloping collar, and great character with crude, whittled, wavy glass.

*Est.: \$200 - \$400 • Min. bid: \$100*



### Lot 204

**"WYNKOOP & Co's / TONIC MIXTURE / NEW YORK. - WARRANTED TO CURE - FEVER & AGUE"** (with partial original label), 1850 - 1860. Medium sapphire blue, rectangular with beveled corners, applied sloping collar - blowpipe pontil scar, ht. 6 3/8"; (a couple of minor scratches near base on back label panel, otherwise pristine perfect). Approx. 50% original label on reverse gives directions for use. Crude seedy glass, fantastic color and condition! Found in LaGrange, IN.

*Est.: \$4,000 - \$8,000 • Min. bid: \$2,000*



### Lot 205

**"CARTER'S / SPANISH / MIXTURE"** (with 80% complete, original label). America, 1850 - 1860. Medium old amber, cylindrical, applied sloping collar with bevel - iron pontil scar, ht. 8 3/8", in 'as-found' virtually perfect condition; (some exterior soot and residue; a fare amount of dried interior sediment or residue). Odell, pgs. 68 & 69. A scarce color for this mold (the majority being in shades of olive green), and rare in this color with a label!

*Est.: \$600 - \$900 • Min. bid: \$300*



### Lot 206

(Label-only), **APACHE INDIAN HERBILINE / POSITIVELY CURES / SYPHILIS / AND ALL / FEMALE COMPLAINTS / WILL POSITIVELY CURE ASTHMA / MONTANA HARRY / Sweet Water Reservation / BIG TIMBER, MONTANA, Utility or Medicine Bottle**, 1865 - 1875. Yellowish olive, 3-pc. mold, applied sloping collar - iron pontil scar, ht. 7 1/4"; (bottle is perfect, 98% complete, likely original, period label has some typical minor acid aging). Provenance: Ex. John Feldmann collection.

*Est.: \$600 - \$900 • Min. bid: \$300*



### Lot 207

**"SWAIM'S - PANACEA - PHILADA"**, America, 1845 - 1855. Clear, bright yellowish olive, cylindrical with nine indented panels, large applied sloping collar with bevel - base appears as smooth, but is likely a very faint sand type pontil (as is typical for this mold), ht. 7 3/4", perfect. These heavy early Swaim's often have issues or wear, but not this one! A fantastic example having excellent clarity, beautiful color, clean, bright and sparkling.

*Est.: \$400 - \$600 • Min. bid: \$200*



### Lot 208

**"ROHRER'S - EXPECTORAL / WILD / CHERRY / TONIC - LANCASTER PA"**, 1855 - 1865. Golden amber through the shoulders shading to a medium-to-deep amber near the base, rectangular pyramid form with roped corners, applied sloping collar with ring - iron pontil scar, ht. 10 5/8", near mint; (a small potstone near the surface of the glass on the reverse with a 1/8" flake, but no radiations; a tiny pinhead bit of roughness on the back edge of the lip). A nice example with a heavy pontil scar.

*Est.: \$175 - \$350 • Min. bid: \$100*



### Lot 209

"**DR B.W. HAIR'S - SARSAPARILLA**", America, 1850 - 1860. Aquamarine, square with beveled corners, applied sloping collar - blowpipe pontil scar, ht. 9 1/2", perfect. Odell, p.157; DeG #91. A great looking, impressive sarsaparilla from Cincinnati, OH (per Odell, later moving to Hamilton, OH). Another very rare pontiled sarsaparilla, one that does not come around often. Provenance: Gary Enters collection.

**Est.: \$400 - \$800 • Min. bid: \$200**



### Lot 213

"**DR CUMMINGS' / COMPOUND EXTRACT / SARSAPARILLA AND DOCK / PORTLAND ME.**", 1845 - 1855. Aquamarine, rectangular with beveled corners, thin flared mouth - blowpipe pontil scar, ht. 7"; (a hard-to-see, hair-line-thin, 1/2" spider crack on the back corner, above the base, and a couple of in-making cooling lines, 1/4" or less, in the base, otherwise pristine perfect). Extremely rare! Gary Enters collection; Ex. James Hagenbuch, Roger Sweetland, Tom Eccles collections.

**Est.: \$400 - \$600 • Min. bid: \$200**



### Lot 210

"**Dr MYER'S - VEGETABLE EXTRACT / SARSAPARILLA / WILD CHERRY / DANDELION - BUFFALO. N.Y.**", America, 1850 -1860. Bright aquamarine, rectangular with beveled corners, applied sloping collar - iron pontil scar, ht. 9 3/4", pristine perfect! Odell, p.262; DeG #158. Rare. An absolutely top example, about as nice as you could hope to find. Brilliant sparkling glass, crisp bold embossing, crude wavy glass, and virtually 'out-of-the-mold' pristine condition.

**Est.: \$1,500 - \$2,500 • Min. bid: \$800**



### Lot 214

"**DR. C. POPE'S . / SARSAPARILLA.**", America, 1850 - 1860. Aquamarine, rectangular with beveled corners, applied large square collar - blowpipe pontil scar, ht. 6 1/2", attic mint! Odell, p.282; DeG #168. A very rare sarsaparilla, clean, bright and sparkling. In addition, excellent eye-appeal with the slightly offset embossing, broad form, short neck, and large collar. Provenance: Gary Enters collection; Ex. Tom Eccles collection.

**Est.: \$600 - \$1,200 • Min. bid: \$300**



### Lot 211

"**BUSH'S / SMILAX / SARSAPARILLA**", 1850 - 1860. Aqua, rectangular with beveled corners, large, applied flanged collar - blowpipe pontil scar, ht. 9 7/8"; (a bit of minor exterior wear, and a little spotty light interior haze in one of the side panels and in one of the back beveled edges, otherwise excellent). Odell, p.62; DeG #33. Listed as "Ex. Rare", an impressive sarsaparilla. The condition issues are relatively minor, displays near mint. Gary Enters collection.

**Est.: \$400 - \$600 • Min. bid: \$200**



### Lot 215

"**DR. WEBSTER'S - SARSAPARILLA - ITHACA**", 1845 - 1860. Aquamarine, rectangular, beveled corners, applied sloping collar - blowpipe pontil scar, ht. 6 1/2"; (a little light interior haze through the corners and shoulders, relatively minor; the bottle may have been lightly cleaned, but beyond a little minor wear, presents as otherwise near mint). Odell, p.366; DeG #213. Listed as "Ex. Rare" by DeGraff, a good clean example of this upstate New York pontiled sarsaparilla. Gary Enters collection.

**Est.: \$300 - \$600 • Min. bid: \$150**



### Lot 212

"**GEORGES / SARSAPARILLA - COMSTOCK & BR. - N Y.**", 1850 - 1860. Aquamarine, rectangular with beveled corners, applied sloping collar - iron pontil scar, ht. 9 1/4"; (a little light dullness, or very faint spotty haze, not terribly distracting, and just a trace of minor light wear, otherwise perfect). Another very rare sarsaparilla, nice crude glass, overall excellent condition. Provenance: Gary Enters collection; Ex. Tom Eccles collection.

**Est.: \$1,000 - \$1,500 • Min. bid: \$500**



### Lot 216

"**DR WEBSTER'S / SARSAPARILLA**", 1845 - 1855. Aquamarine, rectangular with beveled corners, applied sloping collar with bevel - blowpipe pontil scar, ht. 5 3/4", attic mint; (a little in-making glass extrusion along two of the beveled corners where the mold did not close completely, noted for complete accuracy). Odell, p.366. Another extremely rare example of the Dr. Webster's Sarsaparilla - only the second example of this mold to be offered in more than 20 years. Gary Enters collection.

**Est.: \$400 - \$800 • Min. bid: \$200**

**Lot 217**

**"SWAYNE'S - COMPOUND - FLUID EXTRACT / of SARSAPARILLA - PHILAD.A"**, 1850 - 1860. Bright aquamarine, rectangular, narrow beveled corners, applied double ring collar - blowpipe pontil scar, ht. 7 1/8", near mint; (a small bruise or 'flash' in a shoulder corner, otherwise perfect). Odell, p.338; DeG #201. Very rare! Believed to be only the second example offered in more than 30 years. Clean with crude, wavy glass. Gary Enters collection; Ex. Sam Greer collection.

*Est.: \$400 - \$800 • Min. bid: \$200*

**Lot 221**

**"R.J. DAVIES / CHEMIST / BROOKLYN"** (on raised shield), America, 1830 - 1850. Colorless, conical form, tooled, thin flanged lip - blowpipe pontil scar, ht. 4 3/8"; (professionally cleaned to original luster, otherwise near mint condition). We have not seen this bottle before and were unable to find any information on it. Likely a very early, and very rare, pontiled medicine.

*Est.: \$200 - \$400 • Min. bid: \$100*

**Lot 218**

**"Graefenberg Co. - SARSAPARILLA / COMPOUND - New York"**, America, 1850 - 1860. Aquamarine, rectangular with beveled corners, applied sloping collar - blowpipe pontil scar, ht. 7"; (a little faint haze, barely noticeable, primarily on the back panel, otherwise near mint). Odell, p.150. A scarce sarsaparilla with interesting, quirky embossing, having a mix of different font styles. Provenance: Gary Enters collection.

*Est.: \$150 - \$250 • Min. bid: \$80*

**Lot 222**

**"EASTMAN'S - BALSAM OF - CHERRY"**, Midwest, possibly Zanesville Glass Works, probably 1846 - 1851. Aquamarine, 8-sided, applied sloping collar - blowpipe pontil scar, ht. 6 7/8"; (in 'as-found' condition with some spotty light interior content haze, otherwise attic mint). From an estate in Bellefontaine, OH. An extremely rare pontiled medicine from Zanesville, believed to be only the second example offered in more than 30 years. Harry Eastman was an early druggist from Zanesville.

*Est.: \$500 - \$1,000 • Min. bid: \$250*

**Lot 219**

**"GENUINE - SHEPHERD'S / SARSAPARILLA - PREPARATION - BALTIMORE"**, America, 1845 - 1860. Aquamarine, rectangular with beveled corners, applied sloping collar - blowpipe pontil scar, ht. 5 5/8"; (some in-manufacture crazing lines and roughness around the edge of the lip, otherwise virtually attic mint). Odell, p.319. Very scarce. A clean, bright, sparkling example with some nice character and waviness to the glass. Gary Enters collection.

*Est.: \$400 - \$800 • Min. bid: \$200*

**Lot 223**

**"DR MANN'S - CELEBRATED / AGUE BALSAM - GALION, OHIO"**, a Midwest glasshouse, 1855 - 1860. Rich aquamarine, rectangular with beveled corners, applied ring collar with small bevel - heavy iron pontil scar, ht. 6 3/4"; (some light washable interior content residue, otherwise attic mint). Scarce. A beautiful example, outstanding condition. From an estate in Bellefontaine, OH.

*Est.: \$400 - \$600 • Min. bid: \$200*

**Lot 220**

**"DR. WESLEY'S - INFANT - DROPS"**, America, probably 1832 - 1836. Light aquamarine, nearly colorless, square, sheared, tooled, thin flanged lip - blowpipe pontil scar, ht. 3 1/2", near mint; (some light interior content residue, and a shallow pontil flake extends to the edge of the base, otherwise perfect). Odell, p.368. Very early and extremely rare! We could not find a record of this bottle selling at auction. From an estate in Bellefontaine, OH.

*Est.: \$300 - \$500 • Min. bid: \$150*

**Lot 224**

**"HYATT'S - INFALLIBLE - LIFE BAL-SAM / N.Y."**, America, 1870 - 1880. Light apple green, rectangular with beveled corners, applied sloping collar with bevel - smooth base, ht. 9 7/8"; (a few areas of scattered, patchy, very light haze, on the exterior, barely noticeable, otherwise near mint). See article on Hyatt's bottles, The Near Ultimate Medicines, AB&GC, January, 2021. A beautiful example, nice light green color, excellent condition.

*Est.: \$200 - \$400 • Min. bid: \$100*



### Lot 225

**"HYATT'S - AB / DOUBLE STRENGTH - LIFE BALSAM / N-Y"**, America, 1870 - 1880. Deep greenish aquamarine, almost a light apple green, rectangular with beveled corners, applied sloping collar with bevel - smooth base, ht. 9 5/8"; (a touch of minor wear including a light scratch on the back label panel; some interior content stain, primarily in the shoulders, some of which may wash out, otherwise excellent). Scarce "Double Strength" mold, overall nice condition.

*Est.: \$200 - \$400 • Min. bid: \$100*



### Lot 226

**"HYATT'S - INFALLIBLE - LIFE BAL-SAM / N-Y."**, America, 1865 - 1875. Light green, rectangular with beveled corners, applied sloping collar with bevel - smooth base with large offset oval, ht. 10"; (a dug bottle with a few scratches and minor ground imperfections, some light interior haze). Scarce. This bottle would likely benefit from a quality cleaning. An earlier mold than the two preceding examples.

*Est.: \$175 - \$350 • Min. bid: \$90*



### Lot 227

**"SANFORD'S - EXTRACT OF - HAMAMELIS / OR WITCH HAZEL"**, 1870 - 1880. Deep, vivid cobalt, rectangular, beveled corners, applied square collar - smooth base, ht. 11 3/8", perfect; (note, this is an attic-type bottle discovered with remnants of the original label, but has since been washed off). A big impressive medicine, virtually 'out-of-the-mold' pristine condition. Nice crude glass, and as rich and deep of a color as we have seen. Finest possible example.

*Est.: \$1,500 - \$2,500 • Min. bid: \$800*



### Lot 228

**"DR M.M. FENNER'S / PEOPLES REMEDIES / FREDONIA, N.Y. / U.S.A. / KIDNEY & BACKACHE / REMEDY / 1872 - 1898"**, probably 1906 - 1910. Rich, yellowish olive coloration, oval, tooled sloping collar - smooth base, ht. 10 1/4", pristine perfect! Extremely rare - one of only three known in this color (one of them is heavily stained). Fantastic eye-appeal, absolutely gorgeous color, virtually 'out-of-the-mold' condition. See article in AB&GC, July, 2021.

*Est.: \$400 - \$800 • Min. bid: \$200*



### Lot 229

**"LOG CABIN / SARSAPARILLA / ROCHESTER, N.Y."**, America, 1887 - 1890. America, probably 1887 - 1890. Medium-to-deep amber, irregular hex form with three indented panels, tooled blob collar - **"PAT. SEPT. 6TH / 1887"** (on smooth base), ht. 8 3/4"; (some over-all light interior content haze, and just a light touch of exterior wear, otherwise very near mint). O/S #31. This one does not appear to have been dug, and with a little TLC on the interior, would present as virtually perfect.

*Est.: \$100 - \$150 • Min. bid: \$50*



### Lot 230

**Lot of (2), "DR J.H. BROWNS / EXPECTORANT. SYRUP - KIEFER & VINTON - PROPRIETORS" Medicine Bottles** (with original labels), Lorenz & Wightman, Pittsburgh, 1865 - 1872. Both are aquamarine, rectangular, applied double round collar - **"L&W"** (on base of 5 1/2" example), smooth base, ht. 5 1/2" & 7 1/8"; (bottles are perfect with just interior content residue; labels approx. 95% complete with some staining). A great pair, the small size is very rare.

*Est.: \$150 - \$250 • Min. bid: \$80*



### Lot 231

**Lot of (5), Scare-to-Rare smooth-base Medicines, 1875 - 1900. "J. FOLEY'S - INDIAN / BOTANIC - BALSAM"**, 2nd: **"FENTON'S - MARINE / DRUG STORE - CLEVELAND. O"**, 3rd: **"BALSAM OF / RHUBARB - PETER JACOBS / HAMILTON / O"**, 4th: **"DR. FRANKLIN'S / HAIR RESTORER / COLUMBUS, OHIO"**, 5th: **"HAMLIN WIZ-**

**ARD OIL CO. - WIZARD / STOMACH & BLOOD / REGULATOR - CHICAGO, ILL."**. All are mint to near-mint. See online catalog for additional information.

*Est.: \$250 - \$400 • Min. bid: \$130*



### Lot 232

**"L.Q.C. WISHART'S - PINE TREE / TAR CORDIAL / PHILA" - "PATENT" / (PINE TREE) / "1859"**, 1860 - 1865. Bright yellowish olive, almost an olive yellow, square, beveled corners, applied sloping collar - smooth base, ht. 7 5/8"; (a little scattered minor wear including some light scratches, and a 1/8" flake on a shoulder corner). Probably a dug bottle, but retains almost all of its original luster. Scarce 'stick tree' mold, and one of the earliest of all the Wishart's. Ex. Joan Tyler collection.

*Est.: \$400 - \$800 • Min. bid: \$200*





### Lot 233

“L.Q.C. WISHART’S - PINE TREE / TAR CORDIAL / PHILA” - “PATENT” / (PINE TREE) / “1859”, America, probably 1863 - 1865. Medium-to-deep yellowish grass green, square with beveled corners, applied sloping collar - smooth base, ht. 7 7/8”; (professionally cleaned to original luster; a touch of minor wear including a small spot of light abrasion on the shoulder, otherwise excellent). Another very early example, square shoulders, and believed to be the 2nd earliest ‘tree’.

*Est.: \$250 - \$350 • Min. bid: \$130*



### Lot 237

“L.Q.C. WISHART’S - PINE TREE / TAR CORDIAL / PHILA” - “PATENT.” / (PINE TREE) / “1859.”, America, 1865 - 1870. Bright yellowish green, square with beveled corners, applied sloping collar - smooth base, ht. 9 1/2”, near mint; (just a slight trace of wear including a tiny pinhead flake on the label panel near one of the beveled edges, and a few scratches on the shoulder panel, otherwise virtually perfect). A scarce, very pretty color, a lot of yellowish tones. Ex. Joan Tyler collection.

*Est.: \$250 - \$400 • Min. bid: \$130*



### Lot 234

“L.Q.C. WISHART’S - PINE TREE / TAR CORDIAL / PHILA” - “PATENT” / (PINE TREE) / “1859”, America, 1865 - 1870. Medium emerald green, square with beveled corners, applied sloping collar - smooth base, ht. 8”, near mint; (a pinhead flake on the edge of the lip, and a 3/4” area of roughness and minor flaking along the mold seam on the back beveled edge due to in-manufacture glass extrusion when the bottle was blown). Provenance: Ex. Dr. Burton Spiller collection.

*Est.: \$250 - \$350 • Min. bid: \$130*



### Lot 238

“L.Q.C. WISHART’S - PINE TREE / TAR CORDIAL / PHILA” - “PATENT.” / (PINE TREE) / “1859.” (with approximately 50% original label), 1865 - 1870. Clear, light-to-medium green with an emerald tone, square with beveled corners, applied sloping collar - smooth base, ht. 9 1/2”, near mint; (a 3/8” x 3/8” chip on the neck, from below the applied collar, likely occurring in manufacture, and a bit of light interior content residue). Good color, strong embossing, scarce with original label.

*Est.: \$250 - \$400 • Min. bid: \$130*



### Lot 235

“L.Q.C. WISHART’S - PINE TREE / TAR CORDIAL / PHILA” - “PATENT” / (PINE TREE) / “1859”, America, 1865 - 1870. Light clear green with a yellowish tone, square with beveled corners, applied sloping collar - smooth base, ht. 8”; (lightly cleaned to original luster and otherwise near mint condition; just a trace of minor wear including a pinhead open bubble). Nice character, excellent clarity, very scarce color. Provenance: Ex. Joan Tyler collection.

*Est.: \$250 - \$400 • Min. bid: \$130*



### Lot 239

“L.Q.C. WISHART’S - PINE TREE / TAR CORDIAL / PHILA” - “PATENT.” / (PINE TREE) / “1859.”, 1865 - 1870. Medium green with a very slight teal tone, square with beveled corners, applied sloping collar - smooth base, ht. 9 1/2”, near perfect; (a shallow flake, 1/8” or less, on one of the beveled corners has been lightly buffed, otherwise very near mint). This is the scarcer mold with the word “PATENT” in smaller letters, lower on the panel, as well as the smaller tree. Ex. Joan Tyler collection.

*Est.: \$200 - \$300 • Min. bid: \$100*



### Lot 236

“L.Q.C. WISHART’S - PINE TREE / TAR CORDIAL / PHILA” - “PATENT” / (PINE TREE) / “1859”, America, 1865 - 1870. Medium-to-deep blue green, almost a teal tone through the neck, square with beveled corners, applied sloping collar - smooth base, ht. 7 7/8”; (a 3/8” x 3/8” shallow, scallop-type flake, on the side label panel at the edge of the base; a couple of small, partially open surface bubbles, otherwise excellent). A nice example that has not been dug and cleaned.

*Est.: \$200 - \$300 • Min. bid: \$100*



### Lot 240

“L.Q.C. WISHART’S - PINE TREE / TAR CORDIAL / PHILA” - “PATENT.” / (PINE TREE) / “1859.”, America, 1865 - 1870. Rich medium emerald with a slight yellowish tone, square with beveled corners, applied sloping collar - smooth base, ht. 9 1/2”; (professionally cleaned with a little scattered wear remaining, including a 1/4” flake on one of the beveled corners). A bright, clean example, nice rich color.

*Est.: \$200 - \$300 • Min. bid: \$100*



## Lot 241

"L.Q.C. WISHART'S - PINE TREE / TAR CORDIAL / PHILA." - "TRADE" / (PINE TREE) / "MARK", (with original wrapper, virtually complete contents, tax stamp / neck seal), bottle probably 1898 - 1905, wrapper 1906-07. Deep blue-green, almost a teal tone, square, beveled corners, tooled sloping collar - smooth base, ht. 10"; (the bottle is perfect; wrapper incomplete, but mostly legible, darkened a bit from age). Very rare in this condition. Found in the attic of a home in Worthington, Ind.

*Est.: \$300 - \$600 • Min. bid: \$150*



## Lot 245

"L.Q.C. WISHART'S - PINE TREE / TAR CORDIAL / PHILA." - "TRADE" / (PINE TREE) / "MARK", America, 1880 - 1895. Medium amber, square with beveled corners, tooled sloping collar - smooth base, ht. 9 3/4", virtually attic mint; (tiny trace of faint wear, otherwise pristine perfect). Provenance: Joan Tyler collection.

*Est.: \$150 - \$250 • Min. bid: \$80*



## Lot 242

"L.Q.C. WISHART'S - PINE TREE / TAR CORDIAL / PHILA." - "TRADE" / (PINE TREE) / "MARK", 1870 - 1880. Rich, deep tobacco amber with a hint of olive, square with beveled corners, applied sloping collar - smooth base, ht. 10 1/8"; (professionally cleaned to original luster and near mint condition, some haze remains on the base, and some very faint wear on the label panel). A very rare and different color for a "Trade Mark" Wishart's (believed to be one of only 2-3 in this color).

*Est.: \$300 - \$600 • Min. bid: \$150*



## Lot 246

"JOHN HART & Co - JOHN HART & Co", Figural Hair Bottle, America, 1870 - 1880. Medium amber, figural heart form, applied double ring collar - smooth base, ht. 7 1/8", near mint; (a little patchy, light, interior content stain, and a trace of faint light wear, otherwise perfect). DF, page 73. A scarce figural hair bottle, reportedly from Lancaster, Pennsylvania.

*Est.: \$400 - \$600 • Min. bid: \$200*



## Lot 243

"L.Q.C. WISHART'S - PINE TREE / TAR CORDIAL / PHILA." - "TRADE" / (PINE TREE) / "MARK", 1870 - 1880. Clear, medium emerald in the lower half shading to a rich, very deep emerald green through the shoulders and neck, square with beveled corners, applied sloping collar - smooth base, ht. 10 1/4"; (a minor, pinhead size flake on the edge of the lip, otherwise pristine). A rare and eye-appealing color for the "TRADE MARK" mold. Crisp, very bold embossing, outstanding condition!

*Est.: \$600 - \$900 • Min. bid: \$300*



## Lot 247

"C.A.P. MASON - ALPINE / HAIR BALM - PROVIDENCE, R.I.", probably 1858 - 1862. Light yellowish olive amber, almost an olive yellow coloration, rectangular, beveled corners, applied double ring collar - smooth base, ht. 7"; (some exterior dullness on the front and one of the side panels; a little minor wear including a small scuff and pinhead flake on a shoulder corner, and some light interior haze, otherwise excellent). DF, p.103. A very scarce mold in a very rare color! Robert Irons collection.

*Est.: \$1,400 - \$2,200 • Min. bid: \$700*



## Lot 244

"L.Q.C. WISHART'S - PINE TREE / TAR CORDIAL / PHILA." - "TRADE" / (PINE TREE) / "MARK", 1870 - 1880. Bright, medium-to-deep blue green, square with beveled corners, applied sloping collar - smooth base, ht. 10 3/8", attic mint! Another great example, 'attic condition', bright and clean. Provenance: Ex. Joan Tyler collection.

*Est.: \$250 - \$400 • Min. bid: \$130*



## Lot 248

"C.A.P. MASON - ALPINE / HAIR BALM - PROVIDENCE, R.I.", 1858 - 1862. Bright, medium yellowish olive, rectangular, beveled corners, applied double ring collar - smooth base, ht. 6 5/8"; (some light patchy interior haze; a little scattered minor exterior wear and dullness, but no other form of damage, and otherwise excellent). It appears to be a dug bottle, but retains much of its original luster. With a light professional cleaning, it would likely present as near perfect. Robert Irons collection.

*Est.: \$1,400 - \$2,200 • Min. bid: \$700*



### Lot 249

**“C.A.P. MASON - ALPINE / HAIR BALM - PROVIDENCE, R.I.”**, 1858 - 1862. Very dense yellowish olive amber, rectangular, beveled corners, applied double ring collar - smooth base, ht. 7”; (a little minor haze or residue in the shoulders; some moderate scratches and wear, primarily on the back label panel, and a little roughness that you can feel, but is not easy to see, on the back edge of the lip). Another very rare color for this mold! Robert Irons collection.

*Est.: \$1,400 - \$2,200 • Min. bid: \$700*



### Lot 253

**“DR TEBBETTS’ - PHYSIOLOGICAL / HAIR - REGENERATOR”**, 1865 - 1875. Rich, deep, raspberry puce coloration, rectangular with beveled corners, applied double ring collar - smooth base, ht. 7 ½”; (a little scattered light wear including a couple of tiny open bubbles with residue; a little patchy haze, but no other form of damage, and otherwise excellent). Likely a dug bottle that does not appear to have been cleaned, but retains much of it’s original luster. Robert Irons collection.

*Est.: \$200 - \$300 • Min. bid: \$100*



### Lot 250

**“DR TEBBETTS’ - PHYSIOLOGICAL / HAIR - REGENERATOR”**, 1865 - 1875. Light pinkish puce, almost a ‘puce-pink’ coloration (pink being the predominate color), rectangular with beveled corners, applied round collar with bevel - smooth base, ht. 7 5/8”; (a tiny, minuscule, less-than-pinhead size flake at edge of lip, otherwise sparkling attic mint. DF, p.152. Outstanding color. They don’t get much lighter, or much prettier, than this! Robert Irons collection.

*Est.: \$1,200 - \$1,800 • Min. bid: \$600*



### Lot 254

**“DR TEBBETTS’ - PHYSIOLOGICAL / HAIR - REGENERATOR”**, 1865 - 1875. Medium golden amber shading to a lighter honey color along one of the sides, rectangular with beveled corners, applied round collar with bevel - smooth base, ht. 7 ½”; (some light haze on the front and side panels, barely noticeable, and a little pinhead open bubble on reverse, otherwise near mint). The light haze would easily clean professionally, if desired. Very scarce color. Robert Irons collection.

*Est.: \$250 - \$450 • Min. bid: \$130*



### Lot 251

**“DR TEBBETTS’ - PHYSIOLOGICAL / HAIR - REGENERATOR”**, America, 1865 - 1875. Medium pinkish strawberry amethyst, rectangular with beveled corners, applied double ring collar - smooth base, ht. 7 ½”, virtually perfect; (only the slightest trace of light wear including an onionskin-thin pinhead open bubble on a shoulder corner, otherwise mint). DF, p.152. Another great example, beautiful color, fantastic condition. Provenance: Robert Irons collection.

*Est.: \$500 - \$800 Min. bid: \$250*



### Lot 255

**“DODGE BROTHERS - MELANINE - HAIR TONIC”**, America, 1865 - 1875. Medium pinkish puce coloration, rectangular with beveled corners, domed shoulders, applied round collar with bevel - smooth base, ht. 7 ½”; (a little minor wear including a 1/8” open bubble on the shoulder, otherwise near mint). DF, p.48. Note, an early cork remains in the neck. A very scarce and desirable hair bottle, clean and sparkling, and a little lighter in tone than most. Robert Irons collection.

*Est.: \$700 - \$900 • Min. bid: \$350*



### Lot 252

**“DR TEBBETTS’ - PHYSIOLOGICAL / HAIR - REGENERATOR”** (with 80% original label), 1865 - 1875. Deep pinkish strawberry puce, rectangular with beveled corners, applied double ring collar - smooth base, ht. 7 ½”, near mint; (a little minor wear including a 1/8” shallow ‘fisheye’ iridescent bruise on a back shoulder corner; a bit of spotty light haze, primarily on one of the side panels, otherwise excellent). Provenance: Robert Irons collection.

*Est.: \$400 - \$600 • Min. bid: \$200*



### Lot 256

**“MRS S.A. ALLEN’S - WORLD’S HAIR / RESTORER - 355 BROOME ST / NEW YORK”**, 1865 - 1880. Medium-to-deep pinkish amethyst, rectangular with beveled corners, applied square collar - smooth base, ht. 7 1/8”; (some patchy faint haze and light wear, but no other form of damage and otherwise excellent). Great color, lighter than most, and if desired, with just a few days in the tumbler, would likely present as very near mint. Robert Irons collection.

*Est.: \$200 - \$300 • Min. bid: \$100*



### Lot 257

**"MRS. S.A. ALLEN'S - WORLDS HAIR / RESTORER - NEW YORK."**, 1865 - 1880. Beautiful pinkish strawberry puce, rectangular, beveled corners, applied square collar - smooth base, ht. 7 1/8"; (lightly cleaned to original luster with a bit of faint light dullness and minor wear remaining, otherwise near mint). The color is a bit of a chameleon that changes depending on the lighting. Excellent character, crude bubbly glass. Robert Irons collection.

*Est.: \$250 - \$400 • Min. bid: \$130*



### Lot 261

**Lot of (2), "MRS. S.A. ALLEN'S - WORLDS HAIR / RESTORER - NEW YORK" Bottles** (one with 85% original label), 1865 - 1880. Bright golden and yellowish honey coloration, both rectangular with beveled corners, applied round collar with bevel - smooth base, **"V.D. / LONDON"** (on base of yellowish example), ht. 7 1/4" each; (the yellow example has some patchy light haze, not terribly distracting, otherwise both are near mint). Nice examples and colors. Robert Irons collection.

*Est.: \$120 - \$240 • Min. bid: \$60*



### Lot 258

**"MRS. ALLEN'S - WORLDS HAIR / RESTORER - NEW YORK."**, 1865 - 1880. Rich, medium-to-deep purple coloration, rectangular with beveled corners, small applied ring collar - smooth base, ht. 7 1/8"; (some scattered light exterior haze, and a tiny, barely pinhead size, flake on a back corner edge, otherwise excellent). Note; scarce mold without the "S.A." initials, as well as having a broad space between "NEW" and "YORK". Robert Irons collection.

*Est.: \$250 - \$400 • Min. bid: \$130*



### Lot 262

**"KICKAPOO / SAGE / HAIR TONIC"** (with original stopper, complete original neck and body labels, and box), America, 1906 - 1910. Cobalt blue, squatty cylinder form, tooled ring collar - smooth base, ht. 5 3/8" (including stopper), perfect; (some dried interior content residue; top of box is detached, but virtually complete). DF, p.88. A scarce, desirable, Indian medicine and hair bottle, and certainly rare in this state of preservation. Provenance: Robert Irons collection.

*Est.: \$400 - \$600 • Min. bid: \$200*



### Lot 259

**Lot of (3), "MRS. S.A. ALLEN'S - WORLDS HAIR / RESTORER - NEW YORK." Bottles**, America, 1865 - 1875. All are shades of dense amethyst, one example is virtually black, all are rectangular with beveled corners, applied round collar with bevel - smooth base, ht. 7 1/4" each; (all have a little scattered wear, a few light scratches; two examples have some spotty minor haze, but no other form of damage). As mentioned, one example virtually black! Robert Irons collection.

*Est.: \$300 - \$500 • Min. bid: \$150*



### Lot 263

**Lot of (2), Hair Bottles**, 1885 - 1900. **"SHAKER - HAIR RESTORER"**, golden amber, rectangular, beveled corners, tooled double ring collar - smooth base, ht. 7 5/8"; (some patchy haze, primarily on the back and side panels, trace of minor wear. 2nd Ex.: **"SKOOKUM ROOT - HAIR GROWER"**, cobalt blue, rectangular, beveled corners, tooled square collar - smooth base, ht. 6 1/2"; (lightly cleaned, and some oily interior residue, otherwise excellent). Robert Irons collection.

*Est.: \$100 - \$200 • Min. bid: \$50*



### Lot 260

**"MRS. S.A. ALLEN'S - WORLDS HAIR / RESTORER - NEW YORK."**, America, 1865 - 1880. Bright medium yellow with a slight olive tone, primarily through the base, rectangular with beveled corners, applied round collar with bevel - smooth base, ht. 7 1/8", near mint; (just a slight trace of very minor wear, and a small area of faint dullness or light haze, barely noticeable, above one of the base corners). Beautiful bright, light color, excellent condition. Robert Irons collection.

*Est.: \$200 - \$400 • Min. bid: \$100*



### Lot 264

**Lot of (2), "Hall's - Hair Renewer" Bottles**, America, 1890 - 1905. Beautiful, bright teal blue, and teal green colors, both are rectangular, tooled ring collar with original matching stoppers - **"R.P.H & CO."** (on smooth bases), ht. 7 1/2" & 7 1/4" respectively (including stoppers), both are perfect. DF, pgs.70-71. Note; the teal green example retains original neck label and partial contents. A beautiful set of Hall's hair bottles, fantastic colors and condition. Robert Irons collection.

*Est.: \$200 - \$400 • Min. bid: \$100*



### Lot 265

**Lot of (2), "Hall's - Hair Renewer" Bottles**, 1890 - 1910. Teal green and cobalt blue, both are rectangular, ring-type collars with original matching stoppers, teal example is tooled, cobalt example is early machine - "R.P.H & CO." (on base of teal example), ht. 7 1/4" & 7 1/8" - including stoppers; (the teal example is perfect; cobalt example is near mint with a 1/8" iridescent bruise on one of the corners, otherwise perfect). The teal example retains neck label. Robert Irons collection.

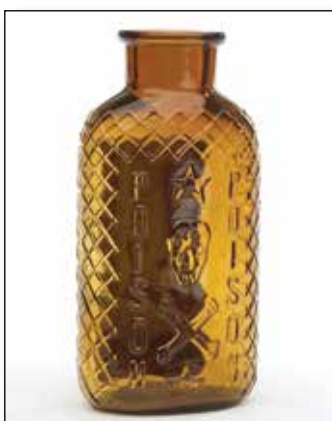
*Est.: \$175 - \$350 • Min. bid: \$90*



### Lot 266

**Lot of (2), "AYER'S - HAIR VIGOR" Bottles**, America, 1895 - 1905. Beautiful peacock blue and bright cobalt, almost an electric blue, both are rectangular with tooled ring-type collars with original matching stoppers - "J.C.A. CO." (on base of peacock example), smooth bases, ht. 7 1/4" each (including stoppers), both are perfect. DF, pgs. 12-13. Great colors, great condition. A lot of bottle for your money! Provenance: Robert Irons collection.

*Est.: \$100 - \$150 • Min. bid: \$50*



### Lot 267

**"POISON" / (STAR / SKULL & CROSSBONES / STAR) / "POISON"** (with 95% original label), America, 1890 - 1910. Yellowish honey amber, oval, embossed lattice pattern, tooled ring collar - "S & D / 231" (on smooth base), ht. 4 1/2", perfect! KO-1. Original red and black label reads in part, *POISON / FOR EXTERNAL USE ONLY / MERCURY BICHLORIDE / ANTISEPTIC TABLETS / CLOVER SHAPE, BLUE... / SHARP & DOHME*. Nice color, scarce with original label.

*Est.: \$250 - \$400 • Min. bid: \$130*



### Lot 268

**"LYNCH & CLARKE / NEW YORK"**, New England Glass Bottle Co, Cambridge, MA, 1823 - 1833. Deep olive amber, cylindrical, extended neck with an applied short tapered collar - sand type pontil, Pt, near mint; (some expected light wear, and dried interior content residue). T# C-2:A. Very rare. Believed to be the earliest of all the Saratoga-type mineral waters, and an outstanding example, especially in this fine condition and desirable early 'medicine-type' collar.

*Est.: \$3,000 - \$5,000 • Min. bid: \$1,500*



### Lot 269

**"LYNCH & CLARKE / NEW YORK"**, probably New England Glass Bottle Company, Cambridge, MA, 1823 - 1833. Medium yellowish olive shading to a deep yellowish olive near the base, cylindrical, applied sloping collar with bevel - sand type pontil scar, Pt, virtually perfect; (just the slightest trace of typical faint wear). T# C-2:B, Type 1. A great example, beautiful color that passes plenty of light, and heavily whittled. A scarce bottle and one of the earliest mineral water molds.

*Est.: \$500 - \$1,000 • Min. bid: \$250*



### Lot 270

**"HASKINS' SPRING CO. / H / SHUTESBURY, / MASS. - H.S. CO."**, America, 1865 - 1880. Rich, medium-to-deep emerald coloration, cylindrical, applied sloping collar with bevel - smooth base, Pt, virtually perfect; (just a trace of typical, faint light wear, otherwise sparkling attic mint!) T# M-24:B. Very scarce. An outstanding example, crude whittle glass, beautiful rich color, excellent pedigree. Provenance: Ex. Gerry Strubel, Howard Dean collections.

*Est.: \$500 - \$1,000 • Min. bid: \$250*



### Lot 271

**"BOYD & BEARD / MINERAL WATER - B / THIS BOTTLE / IS NEVER SOLD."**, America, probably 1841 - 1846. Medium yellowish emerald coloration, cylindrical, applied sloping collar - iron pontil scar, ht. 6 3/4"; (there are a few light scratches; some fine case wear, or usage wear, and the bottle may have been lightly cleaned, but is otherwise in overall excellent condition, and with a fully intact iron pontil). A scarce mineral water from Boston that does not come around often.

*Est.: \$300 - \$500 • Min. bid: \$150*



### Lot 272

**"UNION GLASS WORKS / NEW LONDON, CT" Squat Soda Bottle**, probably 1859 - 1863. Aquamarine, cylindrical, applied blob collar - smooth base, ht. 7 3/8"; (likely a dug bottle that retains some light haze and minor wear, but does not appear to have been cleaned; a hard-to-see, 3/8", stress line and iridescent bruise on the inside edge of the lip). Rare! The condition issues are relatively minor. With just a light cleaning, the bottle would likely present as near mint. Robert Irons collection.

*Est.: \$150 - \$250 • Min. bid: \$80*



### Lot 273

**"ANDERSON & Co / HOME BREWED ALE / ALBANY N.Y."**, a New Hampshire glasshouse, Lyndeborough or possibly Stoddard, 1860 - 1872. Rich, brilliant golden amber, squatty ale form, applied sloping collar with ring - smooth base, ht. 7 3/8", perfect. Very rare, especially in this virtually pristine condition. Daniel Anderson was in business from 1857 to 1872, but all of his bottles are considered very scarce-to-rare. Beautiful color, outstanding condition.

*Est.: \$800 - \$1,200 • Min. bid: \$400*



### Lot 274

**"CHARLES HARRIES / DAYTON. O."**, A. & D.H. Chambers, Pittsburgh, PA, 1874 - 1880. Medium-to-deep amber, cylindrical, 4-pc. mold, applied sloping collar with ring - **"A & D.H.C."** (around heel of smooth base), ht. 9 5/8"; (a shallow 1/4" sliver flake on the inside edge of the lip, otherwise attic mint). A very scarce-to-rare porter, especially in this fine condition. From an estate in Bellefontaine, OH.

*Est.: \$400 - \$600 • Min. bid: \$200*



### Lot 275

**Half-size, Black Glass Wine or Utility Bottle** (with original label), France, 1790 - 1820. **"SIROP ANTI \* PHLOGISTIQUE / BRIANT / A PARIS"** (on applied seal). Deep olive amber, freeblown long-neck cylinder, sheared mouth with applied string lip - deep kick-up base with blowpipe pontil scar, ht. 8 1/2", near perfect; (some light wear, a couple of likely in-making flakes from sheared lip). See Van den Bossche, plate 150, #1. Originally discovered in New Orleans.

*Est.: \$400 - \$800 • Min. bid: \$200*



### Lot 276

**Black Glass Wine Bottle**, England, 1790 - 1800. **"P.G. / & Old / BRISTOL / PORTER Co."** (on applied seal). Olive green, freeblown, wide body squat cylinder, heavy applied string rim - deep kick-up with sand type pontil scar, ht. 9 7/8"; (a tiny 'star' crack, approx. 1/4", near the shoulder, and a 3/4" hairline fissure on the reverse, otherwise full original luster). Burton, pgs. 1135-1136. Rare. Blown for Philip George, a founding partner in the Bristol Porter Brewery.

*Est.: \$300 - \$600 • Min. bid: \$150*



### Lot 277

**Mammoth size, early Case Gin Bottle**, Continental, Netherlands or possibly Germany, 1770 - 1800. Medium yellowish olive, square with nearly straight sides, sheared mouth with an applied band - blowpipe pontil scar, ht. 18 3/4"; (some scratches and typical usage wear; a fair amount of dried content haze, which is often the case, some of which may wash out or light-up with a soaking, otherwise excellent). VdB, plate 83. Humongous size! At nearly 19", it is among the largest.

*Est.: \$700 - \$1,200 • Min. bid: \$350*



### Lot 278

**Large, Freeblown Demijohn**, New England, 1845 - 1860. Medium olive amber, cylindrical, applied sloping collar - sand type pontil scar, ht. 12 1/4", virtually perfect; (a pinhead bit of roughness at the edge of the lip, and just a touch of typical light usage wear). Nice large size, and at 12 1/4", a little larger than most, with a broad body, giving it a stout - squatty, very pleasing appearance. In addition, outstanding character, the glass is absolutely loaded with bubbles and swirls!

*Est.: \$300 - \$500 • Min. bid: \$150*



### Lot 279

**Demijohn**, probably America, 1850 - 1865. Yellow with some warmer honey tones through the neck and shoulders, 2-pc. mold kidney form, applied rough square collar - iron pontil scar, ht. 12", virtually perfect; (a bit of lip-edge roughness, likely in-making). Beautiful color and clarity, excellent character with some bubbles, whittling, and 'orange peel' texture to the glass. This example is very thin, very light in weight, and obviously must have been in wicker to protect it. Robert Irons collection.

*Est.: \$250 - \$400 • Min. bid: \$130*



### Lot 280

**Demijohn**, Continental, probably France, possibly Germany or Belgium, 1830 - 1860. Deep 'old amber', almost a tobacco coloration, freeblown 'flowerpot' form, rough sheared mouth with applied flat band - domed smooth base, ht. 14 1/4"; (a 1/2" area on the applied flat band with some flaking and roughness; an onionskin-thin, partially open bubble on the side, and some scattered horizontal wear marks from the wicker, otherwise perfect). Robert Irons collection.

*Est.: \$250 - \$400 • Min. bid: \$130*

# Rare & Colorful Figural Bitters Bottles

Lot 158

Lot 156



Lot 162

Lot 161

Lot 163

# A Fine Assortment of Wishart's Pine Tree Cordial Bottles



Lot 233

Lot 243

Lot 237

Lot 239

Lot 232