

NOTE: This is a timed-closing auction. See details on first page.

American Glass Gallery™

Auction #36

Opens November 7, 2023 • Closes November 15, 2023



Lot 121: Extremely Rare and Important Gallon-Size Cobalt Blue Harrison's Columbian Ink

Conditions of Sale: Auction #36 – Timed Closing Auction - No Call Backs

1. Absentee Auction

The items in this sale will be sold via absentee auction.

Closing date: **Wednesday, November 15, 2023, 10:00 p.m., EST.**

2. Our Guarantee Regarding Descriptions

American Glass Gallery has made every attempt to describe correctly the property being sold. Descriptions are guaranteed to be accurate as regards to authenticity, age, condition, and measurements to within one-fourth inch, as represented in this catalog. Items in this catalog are not shown to scale. In describing damage, exterior wear or manufacturer's flaws that in our opinion, do not significantly detract visually or monetarily from the value of the item are not listed and will not be considered for refund. The Auctioneers reserve the right to make verbal corrections and provide additional information at any time during the sale.

3. Preview

Items may be viewed by appointment from **November 8, 2023**, through **November 14, 2023**.

4. Bidding Procedure

You may submit your bids by mail, phone, FAX, email or through our on-line auction site. If bidding by mail or FAX, please fill out the absentee form and return it to us. Your bid, either written or oral, grants American Glass Gallery the authority to protect you up to the amount of your stated bid. Your bid will not be removed once executed.

Bidding Times: You can submit your bids anytime after receiving your catalog. Bids may be made by phone, daily, until closing day, **November 15, 2023**, from 9 A.M. - 6 P.M. Eastern Time. Incoming phone bids will be accepted on the closing day (**November 15, 2023**) until 10 P.M. Eastern Time. No exceptions. You may also place your bids through our on-line auction service 24-hours a day once the site has opened for bidding, on or about **November 7, 2023**, continuing until 10:00 P.M. Eastern Time, **November 15, 2023**.

Please do not wait until the last day or two of the sale to place your bids!

Because many collectors wait until the final few days of the sale to place their bids, we anticipate the telephone and internet bidding to be very busy during that period, so please plan accordingly. In the event of a tie bid, the earliest received bid on the lot will take precedent. We would welcome your bids by phone so that we can answer any questions and assist you in your bidding.

You may also telephone us at any time during the auction, prior to the closing of the sale, to check the status of your bids, to find the current bidding level, to open a bid, or to raise a bid on an auction lot.

Bidding Increments are as follows:

Up to \$250.00..... increments of \$10.00
\$250.00 - \$500.00 increments of \$25.00
\$500.00 - \$1,000.00 increments of \$50.00
\$1,000.00 - \$2,500.00 increments of \$100.00
\$2,500.00 - \$5,000.00 increments of \$250.00
\$5,000.00 - \$10,000.00 increments of \$500.00
\$10,000 & Up..... increments of \$1,000.00

Bids submitted between the above increments, whether by mail, FAX, email or on-line via the internet, will automatically be lowered to the closest lower increment.

This is a minimum bid auction. Bids below the printed minimum will not be accepted.

An example of how our absentee bidding system works: You bid \$1000.00 on a lot which is the highest bid received to date. The second highest bid is \$800.00. The current high bid level would be yours at \$850.00, one bid increment higher than the other collector's bid. Any additional bids submitted by others below \$1000.00 will automatically be topped on your behalf by a representative of American Glass Gallery, up to your stipulated high bid amount. If no further bids on this lot are received beyond the \$800.00, then you would have won the lot at \$850.00, not the \$1000.00 that you were prepared to pay.

American Glass Gallery will at NO TIME disclose bids pledged by others; only the current "High Bid" level of a lot will be stated upon request. The highest bidder as determined by American Glass Gallery shall be the purchaser. It is the sole right of the auctioneer to settle any dispute between bidders and to regulate the bidding procedure. The auctioneer reserves the right to refuse any bid he believes not to have been made in good faith.

5. Closing the Auction

Timed Closing. No Call Backs for This Sale!

Auction closes 10 PM Eastern, Wednesday, November 15.

How it works: If any Lot receives a bid within the last 10 minutes before the 10 PM closing time, an additional 10 minutes will be added on to the bidding time for that Lot - at the time the bid is entered. For example, if a bid is entered on Lot #95 at 9:58 PM, an additional 10 minutes will be added to the closing time for that Lot, i.e. the Lot will close 10:08 PM, unless another acceptable bid is received prior to 10:08 PM. If the same Lot receives another bid 5 minutes later, i.e., 10:03 PM, the 10 minute timer will be restarted. Thus, an item will not close until it has received no bids for 10 minutes. At the end of that time, the Lot will automatically close and the highest bidder will be the winner.

No phone bids will be accepted after 10 PM, or during the timed closing portion of the sale.

IMPORTANT: When the auction is in the last 10 minutes, (after 9:50 PM EST, Wednesday, November 15), **you must refresh your screen to see any updated bids and remaining time on the Lots.** You may refresh your bid page by hitting "Enter Bids". A time left column will appear on the right. The time will go down every time you refresh unless an acceptable bid has been placed, then the timer will be reset to 10 minutes.

When a Lot closes, your bid sheet will show either (parentheses only when there is a left bid):

Example:

You **WIN** for \$400 (Left Bid \$500)

or:

Won by another for \$600

Note: Normal email notifications will still be sent during the Timed Closing. However, we recommend that you actively refresh your screen for the latest updates, or changes, as the email notifications may not always get through (i.e., may sometimes be intercepted by email blockers or spam filters).

If you are unable to watch, or be actively involved during the closing time, you may always submit an Absentee, or "Left Bid" which will be executed competitively up to your stipulated high bid should any bids come in during the Timed Closing Period.

Conditions of Sale: Auction #36 – Timed Closing Auction - No Call Backs

6. Terms

Successful Bidders, Prompt and full payment is due immediately upon receipt of our invoice. Absolutely no exceptions. Anyone failing to pay for items won will forfeit all rights to bid in any future American Glass Gallery sales. **Any late or delayed payments may result in loss of return privileges for items purchased in the sale.**

No Items Will Be Mailed Before Full Payment Is Received.

Buyer Premium: Our buyer premium is **17% if paying by cash or check, discounted from 20% if paying by Credit Card or PayPal** (PayPal payment account: jpastor@americanglassgallery.com). This buyer premium will be added to the hammer price as part of the purchase price. For example, if you purchase a lot for \$100.00, you will receive an invoice for \$117.00 if paying by cash, check or money order, plus any applicable sales tax or shipping charges.

Taxes: If you are a Michigan resident, a 6% sales tax will be added to your bill unless you have a valid resale number registered with us.

Shipping: Shipping, handling and insurance are extra. We ship insured via U.S. Mail or UPS. These charges will be added to your bill unless the lots are picked up in person. Oversize packages (boxes with dimensions over 12"), may incur additional shipping charges based on the postal zone of destination. Our charges for shipping (excluding foreign shipments and oversized lots) are \$18.00 for the first item, \$9.00 for each additional item together with extra insurance costs (we use current U.S. Postal Service insurance rates).

Please allow two to three weeks for delivery after receipt of your check.

Payment: American Glass Gallery accepts Cash, Money Orders, Personal Checks, Visa, MasterCard, American Express and PayPal. **If paying by Credit Card or PayPal, an additional 3% will be added to the invoice total.**



7. Refunds

Refunds will be given at the discretion of the Auctioneers. Items purchased must be examined and request for refund made immediately upon receipt of the item or items. Since opinions can differ, particularly in the matter of condition, the Auctioneers will be the sole judge in the consideration of refunds. Refunds requested on the grounds of authenticity must be made within 15 days of the date of the auction, and such refund requests must be accompanied by at least one supporting statement in writing from an authority recognized by the Auctioneers. It is the Auctioneers sincere intention to consider any reasonable request for a refund. **Absolutely no returns for any reason after 30 days following the closing of the sale.**

8. Bidding on any item indicates your acceptance of these terms.



American Glass Gallery™

John R. Pastor
P.O. Box 227
New Hudson, Michigan 48165
Phone: 248.486.0530
Fax: 248.486.0538
www.americanglassgallery.com
email: jpastor@americanglassgallery.com

PLEASE NOTE:

The lots offered in this printed catalog are identical to the lots offered in the on-line catalog. However, due to space constraints of the printed catalog, there may be some further information available regarding some of the lots in the on-line auction descriptions.

Please visit us at

www.americanglassgallery.com

and follow the link to the on-line auction.

The link and on-line auction will be available November 7, 2023. A post-auction price list will be available on our website, in printable form, approximately 30 days after the close of the auction.

We encourage you to contact us by phone or email with any questions, for assistance with bidding, or further details or clarification on any of the lots in this sale. Your complete satisfaction and confidence is our goal!

***THANK YOU AND GOOD LUCK
WITH YOUR BIDS!***

Reference Key

Reference initials and numbers used in the description of this catalog refer to the following publications:

| | |
|----------|--|
| AHG | <i>American Historical Glass</i> , Bessie M. Lindsey, 1967. |
| AM | <i>The Decanter - An Illustrated History of Glass from 1650</i> , Andy McConnell, 2004. |
| AP | <i>Glass in Early America</i> , Arlene Palmer, 1993. |
| BA1 | <i>Collecting The Cures</i> , Bill Agee, 1969. |
| BA2 | <i>Collecting All Cures</i> , Bill Agee, 1973. |
| BB | <i>A Bit About Balsams</i> , Betty Blasi, 1974. |
| BH | <i>Classification and Documentation of Sunburst and Similar Scent Bottles</i> , Bill Ham, AB&GC, 5/87. |
| BJ | <i>American Pot Lids</i> , Barbara and Sonny Jackson, 1987. |
| B/K | <i>The Glass Industry in Sandwich</i> , Raymond Barlow and Joan Kaiser, 1989. |
| BPK | <i>A.M. BININGER Bottles</i> , Jim Bender, 2017 |
| C | <i>Ink Bottles and Inkwells</i> , William Covill, 1971. |
| DB | <i>Antique Sealed Bottles, 1640 - 1900</i> , David Burton, 2015 |
| DeG | <i>American Sarsaparilla Bottles</i> , John DeGrafft, 1980. |
| DeGII | <i>Supplement to American Sarsaparilla Bottles</i> , John DeGrafft, 2004. |
| DF | <i>Hair Raising Stories</i> , Don Fadely, 1992. |
| DM | <i>Wistarburgh, Window Tiles, Bottles and More</i> , Dale L. Murscell, 2007. |
| D/P | <i>Collector's Guide to Candy Containers</i> , Douglas M. Dezso, J. Leon and Rose Poirier, 1998. |
| F | <i>Inks, 150 Years of Bottles and Companies</i> , Ed and Lucy Faulkner. |
| FA | <i>John Frederick Amelung, Early American Glassmaker</i> , Lanmon, Palmer, Hume, Brill, Hanson, 1990. |
| FB | <i>A.S.C.R. The wine bottles of All Souls College</i> , Oxford, 1750 – 1850, Fay Banks. |
| G | (Flasks) <i>American Bottles & Flasks and Their Ancestry</i> , McKearin & Wilson, 1978. |
| G | (Blown Three Mold) <i>American Glass</i> (Chapter VI), George S. and Helen McKearin, 1941. |
| GBH | <i>English Glass For The Collector, 1660-1860</i> , G. Bernard Hughes, 1958. |
| H | <i>American Bottles in the Charles B. Gardner Collection</i> , Norman C. Heckler, 1975. |
| JB | <i>Patent and Proprietary Medicine Bottles</i> , Joseph K. Baldwin, 1973 |
| JEB | <i>Glasshouse Whimsies</i> , Joyce E. Blake, 1984. |
| JH | <i>Glasshouses & Glass Manufacturers of the Pittsburgh Region, 1795 – 1910</i> , Jay W. Hawkins, 2009. |
| JM | <i>Tea Kettle Ink Price and Reference Guide</i> , Joe L. Mathews Jr., 2016 |
| JS | <i>In glas verpakt – European Bottles, Their history and production</i> , Johan Soetens, 2001. |
| K | <i>Poison Bottle Workbook</i> , Rudy Kuhn, 1988. |
| KW | <i>New England Glass & Glassmaking</i> , Kenneth M. Wilson, 1972. |
| LI | <i>Pittsburgh Glass, 1797 – 1891</i> , Lowell Innes, 1976. |
| Mc | <i>Two Hundred Years of American Blown Glass</i> , Helen and George McKearin, 1950. |
| McK | <i>American Glass</i> , George S. and Helen McKearin, 1941. |
| MW | <i>American Bottles & Flasks and Their Ancestry</i> , McKearin & Wilson, 1978. |
| N | <i>Great American Pontiled Medicines</i> , Frederick Nielson, 1978. |
| NCH | <i>The Blaske Collection of American Flasks</i> , Norman C. Heckler, 1983. |
| NCH II | <i>The Blaske Collection: Part II</i> , Norman C. Heckler, 1983. |
| Odell I | <i>Indian Bottles and Brands</i> , John Odell, 1977 |
| Odell II | <i>Pontiled Medicine Encyclopdia</i> , John Odell, 2007 |
| O&S | <i>Warner's Reference Guide</i> , Ed Ojea and Jack Stecher, 1998. |
| P | <i>The Glass Gaffers of New Jersey</i> , Adeline Pepper, 1971. |
| RB | <i>Red Book No. 13; The Collector's Guide to Old Fruit Jars</i> , David C. Eifler. |
| RD | <i>Understanding Antique Wine Bottles</i> , Roger Dumbrell, 1983. |
| RF | <i>The Bottle Book: A Comprehensive Guide to Historic, Embossed Medicine Bottles</i> , Richard Fike, 1987 |
| RH | <i>Collecting Barber Bottles</i> , Richard Holiner, 1986. |
| R/H | <i>Bitters Bottles</i> , Carlyn Ring and W. C. Ham, 1998. |
| RWL | <i>Antique Fakes & Reproductions</i> , Ruth Webb Lee, 1950 |
| T | <i>Collectors Guide to Saratoga Type Mineral Water Bottles</i> , Donald Tucker, 2005. |
| V | <i>Nailsea Glass</i> , Keith Vincent, 1975 |
| VdB | <i>Antique Glass Bottles; Their History and Evolution</i> , Willy Van den Bossche, 2001. |
| Z | <i>Ketchup, Pickles, Sauces</i> , Betty Zumwalt, 1980. |
| ZW | <i>Color Hutchinsons</i> , Zang Wood, 1999. |

- The dash is generally used to indicate that the descriptions are on opposite sides of the bottle or flask.

/ The slash is used to indicate that the descriptions are on different lines or surfaces of the bottle.

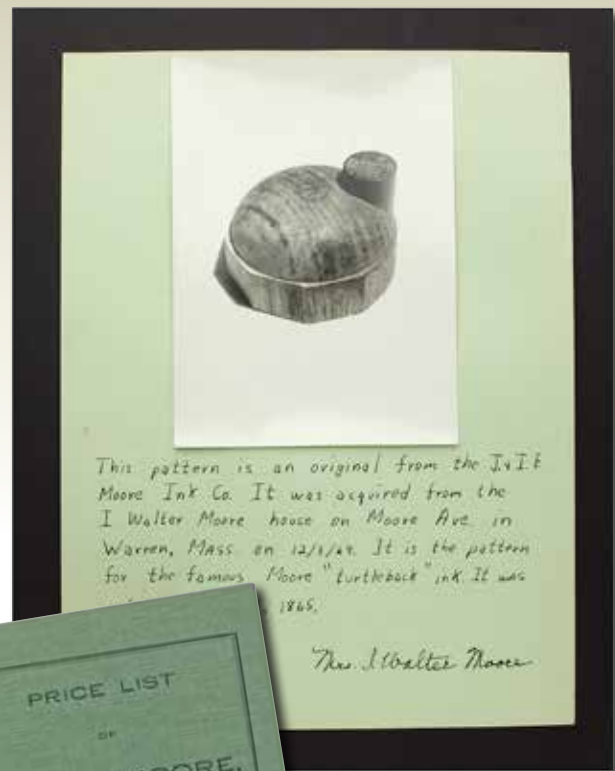
The Ron Rainka collection of J.& I. E. Moore Ink Bottles & Related Items

American Glass Gallery is pleased to present Part 1 of the Ron Rainka collection of J. & I. E. Moore ink bottles and related items from the Moore Company, including many extremely rare and unique items never before offered at auction.

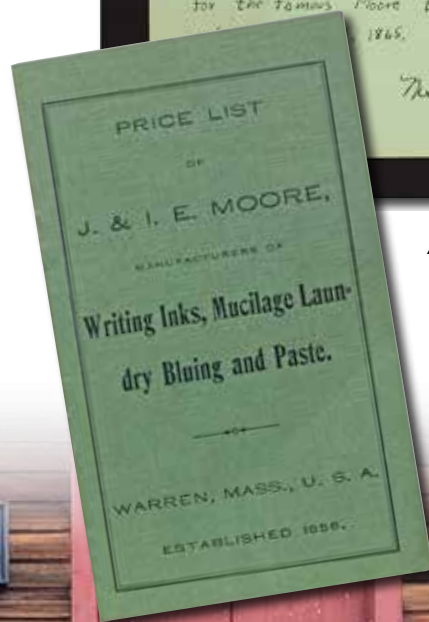
Ron's passionate pursuit of John Moore inks, medicines and related items spans more than 60 years. His collection is, without a doubt, the finest, most comprehensive grouping of Moore ink bottles, ephemera and important 'go-withs' ever assembled.

Watch for Part 2, including more than 40 Lots of rare and important Moore Company items in our March, 2024 catalog.

BELOW: (left to right) Dennis Clowes, Ron Rainka & Jules Rainka standing below the original Moore's Ink store sign.



ABOVE: Original Wooden Patent Model for J.& I.E.M. 'Monitor' Ink and signed affidavit from Mrs. I. Walter Moore.



AT LEFT: Original J. & I. E. Moore Price List & Advertising Catalog.



Watch for this extremely rare amethyst J.& I.E. Ink Bottle, from the Ron Rainka Collection, in our March, 2024 Auction!

Rare & Outstanding Patent Medicine Bottles



Lot 216

Lot 212

Lot 222

Lot 217

Lot 205

Rare & Colorful Historical & Figured Flasks



Lot 13

Lot 18



Lot 42



Lot 21



Lot 14

Rare & Choice Bitters Bottles

BITTERS



Lot 166

Lot 171

Lot 172

Lot 170

Lot 197

Choice Townsend's Sarsaparilla Bottles from the Fred Swiechowicz Collection

Lot 199



Lot 204



Lot 202



Lot 203



Lot 1

“GENERAL WASHINGTON” / BUST OF WASHINGTON – EAGLE Historical Flask, an early Pittsburgh district glasshouse, 1825 - 1835. Greenish aquamarine, sheared mouth – blowpipe pontil scar, Pt, very near mint; (a paper-thin ¼” open surface bubble at the edge of the base, on the medial rib, otherwise virtually pristine condition). GI-2. A great example, very strong impression, virtually no wear, fantastic condition.

Est.: \$250 - \$400 • Min. bid: \$130



Lot 2

“WASHINGTON” / BUST OF WASHINGTON – “BALTIMORE GLASS WORKS” / BUST OF GEORGE ARMISTEAD Historical Flask, probably 1830 – 1840. Light greenish aquamarine, sheared mouth – blowpipe pontil scar, Pt; (a 3/16” flake above the “A” in “Glass”, and a faint narrow ring of light haze above the base, otherwise perfect). GI-17. Comparatively scarce. A bright, clean example with strong, crisp embossing. Ex. Tom McCandless collection.

Est.: \$120 - \$240 • Min. bid: \$60



Lot 3

“WASHINGTON” / BUST OF WASHINGTON – “JACKSON” / BUST OF JACKSON Historical Flask, Coventry Glass Works, CT, 1830 - 1840. Bright yellowish amber through the mid-section, shading to a deeper amber with a slight golden tone in the shoulders and base, sheared mouth – pontil scar, ½ Pt; (some light exterior wear, a tiny bit of minor roughness on the inside edge of the lip, and a slightly weak impression in the shoulders, otherwise excellent). GI-34.

Est.: \$150 - \$250 • Min. bid: \$80



Lot 4

“THE FATHER OF HIS COUNTRY” / BUST OF WASHINGTON – “DYOTTVILLE GLASS WORKS PHILAD.A / GEN. TAYLOR NEVER SURRENDERS” / BUST OF TAYLOR Historical Flask, 1848 - 1855. Deep grape amethyst coloration, sheared mouth – smooth base, Pt, near mint; (just a trace of very light wear including a couple of tiny, pinhead open bubbles, otherwise perfect). GI-38. Beautiful and rare color, excellent condition.

Est.: \$1,200 - \$2,200 • Min. bid: \$600



Lot 5

“THE FATHER OF HIS COUNTRY” / BUST OF WASHINGTON – “GEN.L TAYLOR NEVER SURRENDERS” / BUST OF TAYLOR Historical Flask, 1848 – 1855. Medium cobalt blue, sheared mouth – blowpipe pontil scar, Pt; (some scattered light exterior wear; a 3/8” chip from the edge of the sheared lip, and a bit of very faint content haziness that may wash out). GI-40b. A scarce mold, rare and desirable color. Provenance: Ex. Timothy and Christine Hill collection.

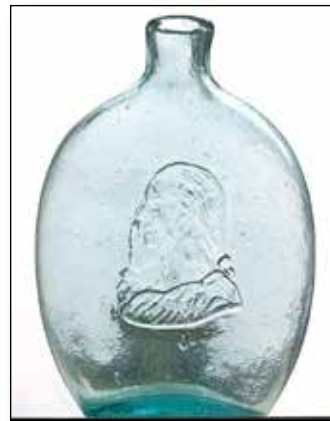
Est.: \$1,000 - \$2,000 • Min. bid: \$500



Lot 6

“THE FATHER OF HIS COUNTRY” / BUST OF WASHINGTON – “A LITTLE MORE GRAPE CAPTAIN BRAGG” / BUST OF TAYLOR Historical Flask, Dyottville Glass Works, 1848 - 1855. Medium-to-deep cobalt blue, sheared mouth – blowpipe pontil scar, Qt; (some typical scattered minor wear, and the top of the lip has been finely polished, likely to smooth a chip, or a bit of flaking, otherwise excellent). GI-42. Beautiful, very strong color, deeper than most.

Est.: \$1,500 - \$2,500 • Min. bid: \$800



Lot 7

WASHINGTON – WASHINGTON Portrait Flask, Lockport Glass Works, Lockport, NY, 1850 - 1860. Aquamarine, sheared mouth – blowpipe pontil scar, Pt; (a fair amount of high point wear on Washington’s bust, primarily on one side, much less on the opposite side, and a little minor roughness including a 1/8” flake on the top of the sheared mouth, otherwise excellent). GI-61. A scarce mold that despite the noted wear, still displays quite nicely. Bruce Purdy collection.

Est.: \$300 - \$500 • Min. bid: \$150



Lot 8

BUST OF TAYLOR – “ROBT RAMSAY / WINE & LIQUOR MERCHT / 281 8th AVENUE / N.Y.” Historical Flask, probably Dyottville Glass Works, 1852 – 1854. Aquamarine, sheared mouth – blowpipe pontil scar, Pt, very near mint; (slight trace of light wear, some faint interior residue). GI-78. Extremely rare! This is the only private-mold wine & liquor merchant known to have used a figured flask mold. Provenance: Fred Swiechowicz collection.

Est.: \$1,200 - \$2,400 • Est.: \$600



Lot 9

"LAFAYETTE" / BUST OF LAFAYETTE / "COVENTRY / C-T" - STARS AND LIBERTY CAP / "S & S" Historical Flask, Coventry Glass Works, 1824 - 1830. Bright yellowish amber below the shoulders shading to a rich olive amber towards the neck and base, sheared mouth – pontil scar, Pt; (some light-to-moderate high point wear; a pinhead flake on the edge of the lip, and small spot on the edge of the lip that may have been lightly polished to smooth a flake). GI-85.

Est.: \$500 - \$700 • Min. bid: \$250



Lot 10

"LAFAYETTE" / BUST OF LAFAYETTE / "COVENTRY / C-T" - STARS AND LIBERTY CAP / "S & S" Historical Flask, Coventry Glass Works, 1824 - 1830. Yellowish olive amber, sheared mouth – pontil scar, ½ Pt; (some moderate high point wear, primarily on Lafayette's coat, as well as the liberty cap on the reverse, otherwise near attic mint; a ¼" pontil flake on edge of base mentioned for completeness). GI-86. Very strong embossing, with crude, pebbly glass.

Est.: \$500 - \$700 • Min. bid: \$250



Lot 11

"BENJAMIN FRANKLIN" / BUST OF FRANKLIN - "T.W. DYOTT, M.D." / BUST OF DYOTT - "WHERE LIBERTY DWELLS THERE IS MY COUNTRY - KENSINGTON GLASS WORKS PHILADELPHIA" Historical Flask, 1825 - 1835. Aquamarine, sheared mouth – pontil scar, Pt; (just the slightest trace of very faint wear, otherwise pristine perfect). GI-94. A comparatively scarce flask, extremely bold impression, virtually pristine perfect, a top example!

Est.: \$400 - \$600 • Min. bid: \$200



Lot 12

"BENJAMIN FRANKLIN" / BUST OF FRANKLIN - "T.W. DYOTT, M.D." / BUST OF DYOTT - "WHERE LIBERTY DWELLS THERE IS MY COUNTRY - KENSINGTON GLASS WORKS PHILADELPHIA" Historical Flask, 1825 - 1835. Deep root beer amber, sheared mouth – pontil scar, Pt; (slight trace of light wear, and a 1/16" flake on lip, otherwise perfect). GI-94. Scarce mold, rare color, extremely bold impression. Ex. James Chebalo, Paul Richards collection.

Est.: \$4,000 - \$6,000 • Min. bid: \$2,000



Lot 13

"JENY LIND" / BUST OF JENY LIND – GLASS FACTORY Historical Calabash, Ravenna Glass Works, Ravenna, OH, 1857 – 1862. Bright medium cobalt blue, applied blob collar – large red iron pontil scar, Qt, near mint; (a slight trace of wear including two, paper-thin open bubbles, 1/8" and ¼", as well as a tiny potstone on the surface of the neck ring on the reverse with a 1/16" iridescent flake, but no radiations, otherwise perfect). GI-104. A beautiful example, fantastic color.

Est.: \$1,600 - \$2,800 • Min. bid: \$800



Lot 14

EAGLE – MEDALLION Historical Flask, an early Pittsburgh district glasshouse, 1825 – 1835. Colorless with an ever-so-slight vaseline tone near the base, sheared mouth – pontil scar, Pt; (a 1/8" bit of minor roughness on the inside edge of the lip; a little high point wear, and a little roughness from some in-manufacture glass extrusion at the mold seam on the neck, otherwise excellent). GII-8. Very rare. Provenance: Ex. Earl Dambach collection.

Est.: \$3,000 - \$6,000 • Min. bid: \$1,500



Lot 15

EAGLE – EAGLE Historical Flask, probably Kentucky Glass Works, Louisville, KY, 1850 – 1855. Aquamarine, sheared mouth – blowpipe pontil scar, Pt; (a touch of minor light wear; some roughness, likely in-manufacture, along the top of the lip including a little discoloration, possibly iron oxide from the gaffer's shears, otherwise excellent). GII-24. Note; this was also one of several early flasks recently discovered from an estate sale in Grosse Pointe Shores, MI.

Est.: \$200 - \$400 • Min. bid: \$100



Lot 16

EAGLE (in circular medallion) – Reverse same, Historical Flask, probably Kentucky Glass Works, Louisville, KY, 1850 – 1855. Aquamarine, sheared mouth – blowpipe pontil scar, ½ Pt, near mint; (just a slight trace of very minor wear including a paper-thin ¼" open bubble, otherwise perfect). GII-30. Very rare. A bright, sparkling example. Mark Vuono aptly coined the GII-29 through GII-36 molds, "Pinstripes". Provenance: Ex. Tom McCandless & Sam Laidacker collections.

Est.: \$400 - \$600 • Min. bid: \$200



Lot 17

EAGLE / "LOUISVILLE KY / GLASS WORKS" Historical Flask, Louisville Glass Works, Louisville, KY, 1855 – 1865. Medium-to-deep citron, applied collar with flat band – smooth base, Qt; (a 2" crack around base of neck; three potstones with radiations, and some overall light exterior wear). GII-35. An extremely rare, unlisted color for this mold. If you like color and character, this one has it in spades. It a beautiful, wonderfully crude and attractive flask. 'Eye candy' for the collector!

Est.: \$800 - \$1,200 • Min. bid: \$400



Lot 18

"DYOTTVILLE GLASS WORKS / PHILADA" Historical Flask, 1855 – 1865. Light-to-medium pinkish puce coloration, sheared mouth – smooth base, Pt, virtually perfect; (just a slight trace of faint wear on the reverse, and a tiny pinhead flake on the side of the neck, otherwise mint). GII-38. A scarce flask, very beautiful and rare color. Most of the scant few examples in puce have some form of damage. About as nice as you could hope to find. James Cheballo collection.

Est.: \$8,000 - \$12,000 • Min. bid: \$4,000



Lot 19

EAGLE - "LIBERTY" / OAK TREE Historical Flask, possibly an early Pittsburgh Lot district glasshouse, 1825 - 1835. Aquamarine, sheared mouth - blowpipe pontil scar, ½ Pt, virtually attic mint; (an in-manufacture, ½" pontil flake extends to the edge of the narrow base, otherwise pristine perfect). GII-60. A fantastic example, bright, clean, sparkling, and virtually no wear! Provenance: Ex. Tom McCandless, Ex. Lippincott collections.

Est.: \$800 - \$1,200 • Min. bid: \$400



Lot 20

"LIBERTY" / EAGLE - "WILLINGTON / GLASS, Co / WEST, WILLINGTON / CONN" Historical Flask, Willington Glass Works, 1860 - 1872. Bright medium olive, applied sloping collar – smooth base, Pt, attic mint! GII-62. A great example, scarce with the applied sloping collar, almost no wear, virtually pristine condition. Provenance: Fred Swiechowicz collection.

Est.: \$300 - \$600 • Min. bid: \$150



Lot 21

EAGLE - "NEW LONDON" / ANCHOR / "GLASS WORKS" Historical Flask, 1860 – 1866. Bright yellowish honey coloration, applied double collar – smooth base, ½ Pt, virtually perfect; (just the slightest trace of light wear, and some faint, washable, interior residue). GII-67. A comparatively scarce mold, very scarce color! Most examples are in shades of light yellow-green, blue green, occasionally orange amber. Crisp impression, outstanding condition. Fred Swiechowicz collection.

Est.: \$800 - \$1,200 • Min. bid: \$400



Lot 22

EAGLE / "PITTSBURGH / PA" - EAGLE Historical Flask, a Pittsburgh district glasshouse, 1860 – 1870. Medium-to-deep olive coloration, applied mouth with flat band – smooth base, Qt; (some light-to-moderate high point wear, and a little in-manufacture glass extrusion at the mold seam on one side, mentioned for completeness, but not considered damage; the embossing is a bit weak in the oval, but fully legible). GII-104. Provenance: Bruce Purdy collection.

Est.: \$300 - \$600 • Min. bid: \$150



Lot 23

EAGLE / "PITTSBURGH / PA" - EAGLE Historical Flask, a Pittsburgh district glasshouse, 1860 – 1870. Bright yellow olive coloration, applied mouth with band – smooth base, Pt, near mint; (a little scattered light wear including a tiny pinhead flake on the shoulder of the reverse, and a couple of paper-thin shallow open bubbles, ¼" or less, otherwise excellent). GII-106. Nice color and character.

Est.: \$300 - \$600 • Min. bid: \$150



Lot 24

MASONIC ARCH - EAGLE / "IP" Historical Flask, Keene Marlboro Street Glassworks, Keene, NH, 1815 – 1830. Clear, light-to-medium bluish green, sheared mouth – blowpipe pontil scar, Pt, near mint; (just a slight trace of typical, very minor wear including a tiny, less-than pinhead speck of roughness on the edge of the lip, and a 3/16" onionskin-thin flake at edge of base, otherwise perfect). GIV-1. Good clarity, color, and condition. Provenance: Fred Swiechowicz collection.

Est.: \$400 - \$600 • Min bid: \$200



Lot 25

MASONIC ARCH – “ZANESVILLE” / EAGLE / “OHIO / J. SHEPARD & CO” Historical Flask, Zanesville Glassworks, Zanesville, OH, 1822 – 1832. Bright aquamarine, sheared mouth – pontil scar, Pt; (a little scattered light-to-moderate high point wear, and a slightly weak impression in the shoulder as is common on this mold, otherwise excellent). GIV-32. A bright, clean example, recently discovered in an estate sale in Grosse Pointe Shores, MI.

Est.: \$400 - \$600 • Min. bid: \$200



Lot 26

ALL SEE EYE (inside 6-pointed star) / “A D” - RAISED ARM AND 6-POINTED STAR / “G R J A” Historical Flask, probably an early Stoddard, NH glasshouse, 1842 - 1850. Bright yellowish amber, applied sloping collar – smooth base, Pt; (a little minor high point wear, otherwise very near mint). GIV-43. A very pretty example, lighter than most, and with a nice even tone from the shoulders to the base.

Est.: \$275 - \$450 • Min. bid: \$140



Lot 27

“SUCCESS TO THE RAILROAD” / HORSE PULLING CART – (Reverse same) Historical Flask, Keene Marlboro Street Glassworks, 1830 - 1842. Medium-to-deep olive amber, sheared mouth – blowpipe pontil scar, Pt; (a little typical, relatively minor high point wear; a small patch of light dullness near one of the mold seams, and a small sandgrain with a tiny, 1/32”, radiation – barely visible without a loop, otherwise excellent). GV-3. Crude, full of bubbles and impurities.

Est.: \$250 - \$400 • Min. bid: \$130



Lot 28

HORSE PULLING CART – EAGLE Historical Flask, Coventry Glass Works, Coventry, CT, 1830 - 1848. Medium yellowish olive amber, sheared mouth – blowpipe pontil scar, Pt, near mint; (just a slight trace of very minor wear, and some light interior content residue, almost certainly washable, otherwise perfect). GV-9. A very nice example of this classic, early, Coventry railroad flask. A ‘fresh-to-the-market’ find from an estate sale in Grosse Pointe Farms, MI.

Est.: \$250 - \$400 • Min. bid: \$130



Lot 29

“RAILROAD” / HORSE PULLING CART – “LOWELL” – EAGLE Historical Flask, Coventry Glass Works, Coventry, CT, probably 1830 - 1835. Medium yellowish olive amber, sheared mouth, blowpipe pontil scar, ½ Pt, near mint; (a touch of typical, minor high point wear, and a tiny little pinhead flake at edge of base, otherwise perfect). GV-10. A very nice, crude example, the glass being filled with tiny bubbles. Provenance: Fred Swiechowicz collection.

Est.: \$300 - \$500 • Min. bid: \$150



Lot 30

SUNBURST FLASK, probably Coventry Glass Works, Coventry, CT, 1815 - 1830. Beautiful, light-to-medium yellowish olive, sheared mouth – blowpipe pontil scar, Pt; (a little light high point wear, otherwise virtually perfect). GVIII-3. A comparatively scarce mold, nice color. A classic, early New England sunburst. The Sunburst group is among the earliest of all the figured flasks.

Est.: \$700 - \$900 • Min. bid: \$350



Lot 31

SUNBURST FLASK, Coventry Glass Works, Coventry, CT, 1815 - 1830. Light-to-medium olive coloration, sheared mouth – pontil scar, ½ Pt, near mint; (a shallow, hard-to-see, 3/16” minor iridescent bruise on the inside edge of the lip, otherwise attic mint). GVIII-18. A beautiful example, nice ‘see-through’ color, virtually no wear, and filled with tiny bubbles. In addition, a little scarcer in this light olive coloration, most examples are in shades of yellowish amber, or olive amber.

Est.: \$800 - \$1,200 • Min. bid: \$400



Lot 32

SCROLL FLASK, Midwest, 1845 - 1860. Bright, medium-to-deep golden amber, sheared mouth – heavy iron pontil scar, Qt, near mint; (a couple of tiny pinhead flakes and some very minor roughness on the inside edge of the sheared mouth, otherwise virtually perfect). GIX-2a. A big, beautiful, sparkling example. We’ve handled our share of amber scrolls over the years, and as most folks know, the quarts are much scarcer than pints. This is a bright, clean, particularly nice one.

Est.: \$1,500 - \$2,500 • Min. bid: \$800



Lot 33

SCROLL FLASK, Midwest, 1840 – 1860. Medium-to-deep yellowish olive amber, almost a tobacco coloration, applied collar with flat band – sand type pontil scar, Qt, near perfect; (a 1/8" flake on the inside edge of the lip, and just a bit of light interior residue below the neck). GIX-2c variant (medial scrolls encircle teardrops at shoulders, but unlike 2c, all stars are 6-pointed). A rare mold, very scarce-to-rare color! From an estate sale near Grosse Pointe Shores, MI.

Est.: \$2,000 - \$4,000 • Min. bid: \$1,000



Lot 34

SCROLL FLASK, Midwest, 1840 – 1860. Beautiful, medium-to-deep sapphire blue, sheared mouth – blowpipe pontil scar, Qt, perfect! GIX-2a. An absolutely gorgeous example, bright, clean, great depth of color – not too light, not too dark, fantastic clarity and outstanding 'attic-type' condition. These large Scrolls are certainly much scarcer than the pints, and this one has the "3 C's" in spades, color, character, and condition! Ex. John Apple & Tom McCandless collections.

Est.: \$4,000 - \$8,000 • Min. bid: \$2,000



Lot 35

SCROLL FLASK, Midwest, 1845 – 1860. Aquamarine, applied collar with band – iron pontil scar, Pt, near perfect; (just a trace of very minor high point wear, and a tiny paper-thin flake from the edge of the applied collar, otherwise mint). GIX-10 variant. A very scarce, unlisted mold, having six rivet, or nail-head type circles around the base of the neck.

Est.: \$120 - \$240 • Min. bid: \$60



Lot 36

SCROLL FLASK, Midwest, 1840 – 1860. Medium-to-deep grass green, sheared mouth – blowpipe pontil scar, Pt; (lightly cleaned to original luster with just a trace of very faint haziness between the ribbing mentioned for completeness, and a 3/16" onionskin-thin open bubble on the side of the neck, otherwise perfect). GIX-11a. A very rare and attractive color for a scroll, nice character, good impression, well defined stars, beautiful! Bruce Purdy collection.

Est.: \$800 - \$1,200 • Min. bid: \$400



Lot 37

SCROLL FLASK, Midwest, 1845 – 1860. Medium-to-deep sapphire blue, elongated neck with a crudely sheared mouth – iron pontil scar, Pt, near mint; (a 1/4" area of minor roughness on the edge of the crudely sheared mouth that you can feel, but is not easy to see, and a trace of typical light exterior wear including a 1/4" onionskin-thin open surface bubble, otherwise excellent). GIX-11. A very attractive, beautiful blue scroll with a pleasing depth of color that will stand out on any shelf.

Est.: \$2,500 - \$4,500 • Min. bid: \$1,300



Lot 38

SCROLL FLASK, an early Pittsburgh district glasshouse, probably John Robinson & Son Glass Manufacturers, 1830 - 1834. Bright aquamarine, corseted scroll form, sheared mouth – blowpipe pontil scar, Pt, perfect! GIX-44. Noted by McKearin as "Very rare", and in our opinion, equally attractive and eye-appealing. The flask is virtually identical to the marked, "JR & Son", GIX-43, produced by John Robinson, but considered by most to be a scarcer mold.

Est.: \$500 - \$800 • Min. bid: \$250



Lot 39

"GENL TAYLOR NEVER SURRENDERS" / CANNON – "A / LITTLE / MORE / GRAPE / CAPT BRAGG" / VINES AND GRAPES Historical Flask, Baltimore Glass Works, 1848 - 1855. Rich, medium-to-deep topaz coloration, sheared mouth – pontil scar, Pt.; (a 1/4" flake at edge of base, and a 1/2" x 3/8" chip on the side of the lip has been professionally repaired, otherwise perfect). GX-4. A scarce mold in an unlisted, absolutely gorgeous color! Ex. Jamie Houdeshell collection.

Est.: \$2,000 - \$4,000 • Min. bid: \$1,000



Lot 40

"GENL TAYLOR NEVER SURRENDERS" / CANNON – "A / LITTLE / MORE / GRAPE / CAPT BRAGG" / VINES AND GRAPES Historical Flask, Baltimore Glass Works, 1848 - 1855. Light aquamarine, sheared mouth, pontil scar, Pt, near mint; (just a bit of minor wear near a side mold seam, a pinhead speck of roughness at edge of base, and a faint thread of light haze above the base, otherwise perfect). GX-5. A great example, strong embossing, almost no wear.

Est.: \$300 - \$500 • Min. bid: \$150



Lot 41

“GENL TAYLOR NEVER SURRENDERS” / CANNON – “A / LITTLE / MORE / GRAPE / CAPT BRAGG” / VINES AND GRAPES Historical Flask, Baltimore Glass Works, 1848 - 1855. Medium-to-deep apricot coloration, crudely sheared mouth with remnants of iron from the lip finishing tool – blowpipe pontil scar, ½ Pt, near mint; (only a trace of faint light wear, and a slightly weak impression in the shoulder). GX-6. A scarce, historical, beautiful little flask.

Est.: \$1,600 - \$3,200 • Min. bid: \$800



Lot 45

“FOR PIKE’S PEAK” / PROSPECTOR – HUNTER Historical Flask, Ravenna Glass Works, Ravenna, Ohio, 1857 - 1864. Clear, medium yellowish olive in the shoulders shading to a deep yellow olive towards the base, crudely applied collar with ring – smooth base, Pt, virtually perfect; (just the slightest trace of very faint wear, and some light interior residue, barely noticeable, likely washable). GXI-51 (base with concave round disk). A pretty example, good impression, almost no wear!

Est.: \$1,400 - \$2,200 • Min. bid: \$700



Lot 42

13 STAR FLAG – “NEW GRANITE GLASS WORKS / STODDARD / N.H.” Historical Flask, New Granite Glass Works, Mill Village, 1860 – 1865. Bright olive amber, sheared mouth – blowpipe pontil scar, Pt, near mint; (a small sandgrain on the shoulder, next to the medial rib, with a tiny 1/8” line, or ‘flash’, and some light exterior wear, otherwise excellent). GX-27. A bright, clean, pretty example, crisp, very strong embossing, excellent character. Beautiful, rare, and very desirable!

Est.: \$8,000 - \$12,000 • Min. bid: \$4,000



Lot 46

“UNION” / CLASPED HANDS / “No 2” – EAGLE Historical Flask, a Pittsburgh district glasshouse, 1860 - 1875. Medium amber below the shoulders shading to a deep amber in the neck and towards the base, applied collar with flat band – smooth base, Qt, near mint; (a shallow pinhead flake on the side of the lip, and a little light high point wear, otherwise perfect). GXII-7. McKearin lists this mold as common. We would argue that the “No 2” variant is “Comparatively scarce”, especially in amber.

Est.: \$400 - \$600 • Min. bid: \$200



Lot 43

Lot of (2), Pike’s Peak Flasks, Pittsburgh, PA and Ravenna Glass Works, OH, 1858 – 1864. 1st Ex: **“FOR PIKE’S PEAK” / PROSPECTOR / “OLD RYE” – EAGLE / “PITTSBURGH / PA”**. 2nd Ex: **“FOR PIKE’S PEAK” / PROSPECTOR – HUNTER**. Both are aqua, applied collar with band – smooth base, ½ Pt; (both have a bit of very light interior haze, the 2nd example may have been lightly cleaned, otherwise excellent). GXI-10 and GXI-52. Bruce Purdy collection.

Est.: \$175 - \$275 • Min. bid: \$90



Lot 47

GIRL RIDING BICYCLE - EAGLE / “A&D.H.C” Pictorial Flask, A. & D.H. Chambers Co, Pittsburgh, 1865 - 1875. Light apple green, applied collar with flat band - smooth base, pint, near mint; (the flask may have been lightly cleaned, but certainly presents as virtually perfect; a tiny pinhead flake on the edge of the lip, a minor scratch on the shoulder, and a ¼” onionskin-thin open bubble). GXIII-3. A scarce flask, strong embossing, and very scarce-to-rare in this light apple green coloration.

Est.: \$400 - \$600 • Min. bid: \$200



Lot 44

“FOR PIKE’S PEAK” / PROSPECTOR – HUNTER Historical Flask, Ravenna Glass Works, Ohio, 1857 - 1864. Golden amber shading to a light honey coloration along the sides, applied mouth with flat band – smooth base, Pt; (a bit of minor lip edge roughness including a shallow 3/16” flake; a little scattered light wear and faint interior content residue in the shoulders, probably washable, otherwise excellent). GXI-50. A desirable ‘colored’ Pike’s Peak.

Est.: \$1,200 - \$1,800 • Min. bid: \$600



Lot 48

HUNTER – FISHERMAN Pictorial Calabash, probably Whitney Glass Works, Glassboro, NJ, 1857 - 1865. Medium-to-deep apricot through the mid-body, shading to a beautiful, deep, reddish peach – almost a strawberry coloration through the shoulders and neck, applied sloping collar – iron pontil scar, Qt; (a bit of minor wear including a few light scratches, and a 3/16” chip along the bottom edge of the applied collar, otherwise excellent). GXIII-4. Beautiful color! Bruce Purdy collection.

Est.: \$200 - \$400 • Min. bid: \$100



Lot 49

SHEAF OF GRAIN – STAR Pictorial Flask, probably Bulltown Glass Works, Bulltown, NJ, 1858 – 1865. Medium-to-deep ‘old amber’, applied round double collar – smooth base, ½ Pt., very near mint; (a 3/16” onionskin-thin open bubble, and some light washable interior residue, otherwise virtually perfect). GXIII-40. A scarce mold, excellent condition, great provenance. Fred Swiechowicz collection, Ex. Roy Brown collection.

Est.: \$400 - \$600 • Min. bid: \$200



Lot 53

“NEWBURGH GLASS CO / PATD FEB 27TH 1866”, 1866 – 1870. Dense tobacco amber, virtually ‘coal black’, applied collar with flat band – smooth base, Pt; (a fair amount of fine high point wear exists, as well as some light scratches on the reverse, but no other form of damage and otherwise perfect). GXV-15. A very scarce, difficult flask to acquire. This example is just about ‘jet black’ in color. Provenance: Fred Swiechowicz collection.

Est.: \$600 - \$900 • Min. bid: \$300



Lot 50

“TRAVELER’S / COMPANION” - (8 POINTED STAR) Historical Flask, Ravenna Glass Works, Ravenna, OH, 1857 - 1864. Medium golden amber, crudely sheared mouth – rectangular iron pontil scar, ½ Pt; (some high point wear on the side, just below the shoulder and above the base, and a tiny little ¼” sliver flake along the edge of the base, otherwise excellent). GXIV-7. A bright, clean example with a fully intact, heavy iron pontil scar.

Est.: \$200 - \$300 • Min. bid: \$100



Lot 54

Whiskey Flask, probably Mid-Atlantic, 1865 – 1875. Bright, medium-to-deep emerald coloration, ‘Union Oval’ form, applied double ring collar – smooth base, Pt; (just a trace of typical light wear, and a small potstone on the shoulder has an ever-so-slight, tiny radiation, difficult to see without a loop, otherwise very near mint). A beautiful, eye-appealing, and very scarce color for this type of flask. Note; there is a shard, or small piece of glass, from the blowing process embedded in the lower lip ring.

Est.: \$200 - \$400 • Min. bid: \$100



Lot 51

“CLYDE GLASS WORKS / N.Y.” Lettered Flask, Clyde Glass Works, Clyde, New York, 1864 - 1873. Amber with some light golden tones through the shoulders, applied double ring collar – smooth base, Pt; (a little scattered minor wear, and some very light exterior dullness, or haze, on the front panel, not terribly distracting, but mentioned for completeness, otherwise near mint). GXV-1. A scarce glasshouse lettered flask, beautifully whittled, overall excellent condition.

Est.: \$150 - \$250 • Min. bid: \$80



Lot 55

Early New England Whiskey Flask, a Stoddard, NH glasshouse, possibly Granite Glass Co, 1855 – 1862. Yellowish ‘old’ amber with a very slight olive tone, horseshoe form, applied sloping collar – smooth base, ½ Pt; (some light scratches and scattered minor wear; a pinhead bit of roughness on the inside edge of the lip, otherwise excellent). See, “*On the Trail of Stoddard Glass*”, Field, p.53, #2. Scarce. A very nice example with pleasing color, excellent character.

Est.: \$250 - \$400 • Min. bid: \$130



Lot 52

“GRANITE / GLASS / CO – STODDARD / N H”, 1855 – 1862. Yellowish ‘old amber’, applied sloping collar – smooth base, Pt, near mint; (just a slight trace of very minor wear, a slightly weak impression, and some light interior content residue, almost certainly washable, otherwise perfect). GXV-7. A great example, outstanding character, whittled, with very seedy, bubbly glass, an unusually long neck, and applied sloping collar. Fred Swiechowicz collection.

Est.: \$300 - \$500 • Min. bid: \$150



Lot 56

Freeblown Chestnut Flask, probably New England, 1800 – 1830. Rich honey amber, chestnut form, sheared, tooled, outward folded mouth – delicate blowpipe pontil scar, ht. 5 3/8”, virtually attic mint; (just a trace of very light wear, otherwise perfect). A very pretty, classical New England chestnut in terms of size, form, the ‘metal’, weight, pontil scar, etc., but in an unusual, atypical color. Provenance: Fred Swiechowicz collection.

Est.: \$300 - \$500 • Min. bid: \$150



Lot 57

Freeblown Chestnut Flask, New England, 1785 – 1820. Clear, light olive with a very slight yellowish tone, chestnut form, sheared mouth with a crudely applied ring type collar – blowpipe pontil scar, ht. 4 7/8", near perfect; (just a faint trace of light wear). A great little chestnut, ever-so-slightly under the 5" mark, delicate light color, and with outstanding character, the glass being filled with tiny bubbles, potstones, and impurities. Fred Swiechowicz collection.

Est.: \$300 - \$500 • Min. bid: \$150



Lot 61

Pattern Molded Globular Bottle, Midwest, probably Zanesville Glass Works, Zanesville, OH, 1820 – 1835. Rich, brilliant aquamarine, 24 ribs swirled to the right, globular form, sheared, tooled, outward folded mouth – pontil scar, ht. 7 1/2"; (some light scratches and typical, relatively minor wear around the mid-body, otherwise very near mint). A bright, clean example, good form, and much more difficult to find than the amber swirls. Bruce Purdy collection.

Est.: \$400 - \$600 • Min. bid: \$200



Lot 58

Freeblown Chestnut Flask, New England, 1785 – 1820. Medium-to-deep olive green, chestnut form, sheared mouth with a small, very crudely applied, ring type collar – delicate blowpipe pontil scar, ht. 5 3/8", near mint; (a little typical light wear as well as a couple of small, onionskin-thin open surface bubbles, otherwise excellent). A very attractive little chestnut flask, filled with small bubbles. From an estate sale in Grosse Pointe Farms, MI.

Est.: \$200 - \$400 • Min. bid: \$100



Lot 62

Pattern Molded Flask, Zanesville Glass Works, Zanesville, OH, 1820 – 1835. Medium clear green, almost a soft mint green coloration, 10 diamond pattern over flutes, chestnut form, sheared mouth – pontil scar, ht. 5 1/4"; (just a little light wear including a 1/8" bit of roughness below the sheared lip, and a 3/16" spot of roughness on one of the raised diamonds, possibly in-manufacture, otherwise very near mint). A very rare and desirable color, overall excellent condition.

Est.: \$2,000 - \$4,000 • Min. bid: \$1,000



Lot 59

Blown Three Mold Decanter, Keene Marlboro Street Glassworks, Keene, NH, 1820 - 1835. Olive amber, ovoid form, geometric sunburst and diamond diapering pattern, sheared and tooled mouth - blowpipe pontil scar, Pt; (a 1/8" open bubble on the shoulder, and a 3/16" partially open bubble with some residue on one of the concentric rings within the sunburst, otherwise excellent). Gill-16. A classic, early, Keene decanter. Provenance: Bruce Purdy collection.

Est.: \$400 - \$600 • Min. bid: \$200



Lot 63

Early, Freeblown Covered Sugar Bowl, America, probably a Pittsburgh glasshouse, 1815 – 1835. Colorless, globular bowl flaring outward to gal-leried rim – applied pedestal foot with glass tipped pontil scar. Delicate bell form cover flaring outward to a sheared and inward folded rim, pontil scarred button type finial, overall ht. 6 1/8" (in-cluding cover), perfect. See "Pittsburgh Glass", Innes, plate 37. A classic, early, freeblown sugar bowl with a matching, likely original, cover.

Est.: \$250 - \$450 • Min. bid: \$130



Lot 60

Pattern Molded Globular Bottle, Midwest, probably Zanesville Glass Works, Zanesville, OH, 1820 – 1835. Medium amber, 24 ribs swirled to the left, globular form, sheared, tooled, and outward folded mouth – pontil scar, ht. 7 3/4"; (some typical light wear around the mid-body, otherwise very near mint). A nice clean example of a classical, early, Midwest amber 'Swirl' bottle. Provenance: Bruce Purdy collection.

Est.: \$400 - \$600 • Min. bid: \$200



Lot 64

Rare, Lacy-Style Pressed Glass Boat Salt, "B.&S. / GLASS / CO" (on stern) – "LAFAYET. – LAFAYET" (on paddle wheels), Boston & Sandwich Glass Works, Sandwich, MA, 1830 – 1840. Colorless, figural paddlewheel steamboat, ht. 1 1/2", length 3 1/2";

(a chip and a bit of flaking on the inside edge of one paddlewheel, just a minor flake on the other; a little flaking on the inside edge of the stern, tiny bit on masthead). Mck, plate 167, #1; BK, plate 1463. Very scarce. James Cheballo collection.

Est.: \$200 - \$400 • Min. bid: \$100



Lot 65

Rare, Lacy-Style Pressed Glass Boat Salt, Boston & Sandwich Glass Works, Sandwich, MA, 1835 – 1850. Deep, vivid cobalt blue, figural boat with horizontal rows patterned with diamond points, ribbing, raised squares, and roping, ht. 1 ½”, length 3 ¾”, near mint;

(some minor flaking on masthead and edge of stern, a bit on inner edge of boat rim). BK, plate 1465. Very rare, particular in cobalt blue (see Barlow – Kaiser text p.288). James Cheballo collection.

Est.: \$600 - \$900 • Min. bid: \$300



Lot 69

Rare, Figural Urn Cologne Bottle, America or possibly France, 1835 – 1855. Colorless, figural urn with pedestal base, 4-pc. mold, image of woman's face in high relief with long hair, and fancy leaf design embossed around center of urn, tooled flanged lip – blowpipe pontil scar, ht. 4 ½”, perfect. A very rare cologne mold, not listed in McKearin. Provenance: James Cheballo collection.

Est.: \$175 - \$350 • Min. bid: \$90



Lot 66

Rare, Lacy-Style Pressed Glass Boat Salt, “PITTSBURGH” (on stern), John Robinson & Son, Stourbridge Flint Glass Works, 1830 – 1834. Colorless, figural paddlewheel steamboat – anchor on base, ht. 1 3/8”, length 3 5/8”; (some chipping on the inside edge of

the paddlewheels; a couple of chips on the stern, the top of which has been polished to remove some flaking, minor roughness on masthead). McKearin, plate 167, #3. James Cheballo collection.

Est.: \$200 - \$400 • Min. bid: \$100



Lot 70

Rare, Fancy Cologne Bottle, probably America, 1835 – 1855. Colorless, acorn form with four panels: “D” and “R” with compote of flowers on 1st panel; large flower with horizontal scrolls on two panels, label space on 4th panel, tooled flanged lip – scalloped base with pontil scar, ht. 4 ¾”, perfect. Extremely rare! Blown in the same mold as MW, plate 112, #6. The McKearin example was further manipulated into a whimsey and now resides in the Corning Museum of Glass. James Cheballo collection.

Est.: \$200 - \$400 • Min. bid: \$100



Lot 67

Rare, Lacy-Style Pressed Glass Boat Salt, “PITTSBURGH” (on stern), John Robinson & Son, Stourbridge Flint Glass Works, 1830 – 1834. Cobalt blue, figural paddlewheel steamboat – anchor on base, ht. 1 3/8”, length 3 5/8”; (some chipping on the inside edge

of the paddlewheels, and on the top and inside surface of the stern; a small chip on the rudder, and minor roughness on the figurehead). Innes, color plate 6, #3. A rare and important salt. James Cheballo collection.

Est.: \$800 - \$1,200 • Min. bid: \$400



Lot 71

Rare, Fancy Cologne Bottle, probably America, possibly France, 1835 – 1855. Colorless, rectangular with slightly corseted sides, scrolled leaves at shoulders, swag with small flowers through midsection above large tulip or flower below framed by large scrolls, sheared and tooled flanged lip – blowpipe pontil scar, ht. 4 1/8”, perfect. Unlisted in McKearin and likely very rare, we have not seen this mold before. Provenance: James Cheballo collection.

Est.: \$150 - \$300 • Min. bid: \$80



Lot 68

Rare, Lacy-Style Pressed Glass Boat Salt, “PITTSBURGH” (on stern), John Robinson & Son, Stourbridge Flint Glass Works, 1830 – 1834. Deep violet blue, figural paddlewheel steamboat – anchor on base, ht. 1 3/8”, length 3 ½”; (some chipping on the inside

edge of the paddlewheels, inside edge of the bow, and edge of stern, chip on rudder; a 1 ½” crack from one of the paddlewheels to the base, edge of masthead appears polished). James Cheballo collection.

Est.: \$150 - \$300 • Min. bid: \$80



Lot 72

Rare, Fancy Cologne Bottle, probably America, 1835 – 1855. Colorless, large column at center with small leaves and vines along each side, motif of large rooster below center column, above pedestal base, tulip designs along sides of bottle, tooled flanged lip – blowpipe pontil scar, ht. 5 5/8”, perfect! Extremely rare in aqua, this is the first colorless example that we can recall seeing. Provenance: James Cheballo collection.

Est.: \$175 - \$350 • Min. bid: \$90



Lot 73

Motif of Lion Pictorial Cologne Bottle, America, probably a South Jersey glasshouse, 1840 – 1855. Bright aquamarine, motif of walking lion in high relief inside large frame, leaf ornaments above and below frame, rectangular, rounded corners, sheared and inward rolled mouth – blowpipe pontil scar, ht. 4 ½”, perfect! MW, plate 111, #5. Very scarce. A similar, but distinctively different mold than Lot 70 in our July (Auction 35), sale. James Chebalo collection.

Est.: \$300 - \$600 • Min. bid: \$150



Lot 77

Lot of (2), Blown Three Mold Inkwells, Coventry Glass Works, CT, and Keene Marlboro Street Glassworks, NH, 1820 – 1840. Dense amber and yellowish olive amber, both cylindrical with disk type mouths – blowpipe pontil scarred bases (ringed and plain), ht. 1 ¾” and 1 ½” respectively, both near mint; (1st Ex. has a pinhead flake on one of the diamond points, and two small open bubbles on the base; 2nd Ex. just a slight trace of faint wear). Gill-18, and Gill-29. Bruce Purdy collection.

Est.: \$200 - \$300 • Min. bid: \$100



Lot 74

Early, Dip Mold Snuff Jar, New England, 1790 – 1820. Bright, light-to-medium yellowish olive, square with rounded corners, domed shoulders, crudely sheared and outward flared mouth – light blowpipe pontil scar, ht. 4 ¼”; (only the slightest trace of very faint wear, otherwise virtually pristine perfect). A very attractive little snuff jar, excellent clarity, character, and condition. Provenance: Bruce Purdy collection.

Est.: \$400 - \$800 • Min. bid: \$200



Lot 78

“TIPPECANOE / EXTRACT – HARD / CIDER” Figural Ink Bottle, probably 1840 - 1842. Colorless, barrel form, sheared, tooled, and inward rolled mouth – polished pontil scarred base, ht. 1 7/8”, very near mint; (just a bit of very faint interior milkiness, otherwise perfect). C#667; Faulkner, p.173. A very rare, historical ink. Almost certainly the earliest of the barrel inks, believed to have been blown during, and perhaps for a short time after, the 1840 William Henry Harrison presidential campaign.

Est.: \$800 - \$1,200 • Min. bid: \$400



Lot 75

Early, Dip Mold Blacking or Utility Bottle, New England, 1810 – 1830. Medium olive amber, cylindrical, dip mold, crude, uneven shoulders with a very short neck, sheared and outward flared mouth – solid glass tipped pontil scar, ht. 3 5/8”, perfect! A little gem of a utility, excellent character, the glass being filled with tiny seed bubbles. Both the color and ‘metal’ are reminiscent of the early New England chestnut bottles. Fred Swiechowicz collection.

Est.: \$200 - \$400 • Min. bid: \$100



Lot 79

“WOOD’S / BLACK. INK / PORTLAND.”, possibly Isabella Glass Works, Brooklyn, NJ, 1851 – 1860. Aquamarine, cone form, sheared and inward rolled mouth – blowpipe pontil scar, ht. 2 ½”, attic mint. Faulkner, p.150, C#12. A scarce embossed cone ink blown for Portland, ME druggist, Nathan Wood. Note; there is a short ‘bird swing’, or fold of glass, in the back, just above the base. Provenance: John Wilson collection.

Est.: \$150 - \$250 • Min. bid: \$80



Lot 76

Scarce size, Rare Blacking or Utility Bottle, possibly Mt. Pleasant Glass Works, NY, 1855 – 1866. Very deep olive amber, cylindrical, 2-pc. mold, applied narrow double ring collar – sand type pontil scar, ht. 4 1/8”, near mint; (slight trace of typical light wear, otherwise perfect). A very unusual, scarce size, similar in form to blacking bottles used by Elisha Waters, and others, but ½ size, and with a different lip treatment. Fred Swiechowicz collection.

Est.: \$250 - \$450 • Min. bid: \$130



Lot 80

Lot of (2), Umbrella Inks, America, 1845 – 1865. Both are shades of medium-to-deep amber, 8-sided umbrella form, sheared mouth – 1st example is smooth base, 2nd example with blowpipe pontil scarred base, ht. 2 3/8” and 2 ½” respectively; (both have been professionally cleaned with a little scattered minor wear remaining; the smooth base example has a couple of tiny flakes at edge of base and a light scratch on one of the side panels). Provenance: Bruce Purdy collection.

Est.: \$175 - \$275 • Min. bid: \$90



Lot 81

Igloo Ink, label-only (with 98% complete, original label), probably 1858 – 1865. Aqua, 'igloo form' factory ground mouth – smooth base, ht. 1 3/4"; (bottle is perfect; label darkened a bit from age, but mostly legible). Label reads in part, *MOORE'S / Excelsior School WRITING INK, / MANUFACTURED BY I.E. MOORE, / Price 8c WARREN, MASS.* Believed to be one of their earliest inks. A fabulous, extremely rare, label. Ron Rainka collection. This was one of Ron's favorites.

Est.: \$100 - \$200 • Min. bid: \$50



Lot 85

"J - & - I - E - M" Monitor Ink, 1865 – 1880. Honey amber through the block side panels, shading to a deeper amber with a golden tone below the neck and through the shoulders, cylindrical with six block panels around the sides, domed shoulders, offset neck with factory ground mouth – smooth base, ht. 1 1/2", perfect. A bright, clean example, beautiful condition, nice shading of color. Provenance: Ron Rainka collection.

Est.: \$200 - \$400 • Min. bid: \$100



Lot 82

Lot of (2) Moore Igloo Inks, probably 1865 – 1870. 1st Ex: **"J.M. & S."** (John Moore & Son), 2nd Ex: **"J. & I.E.M."** (John & Isaac E. Moore). Both are aquamarine, igloo form with high domed shoulders, factory ground mouths – smooth base,

ht. 1 3/4" each; (both attic mint). Scarce. A neat little pair of early Moore ink bottles. Provenance: Ron Rainka collection.

Est.: \$100 - \$200 • Min. bid: \$50



Lot 86

"J - & - I - E - M" Monitor Ink, 1865 – 1880. Light-to-medium apple green, cylindrical with six block panels around the sides, domed shoulders, offset neck, ground mouth – smooth base, ht. 1/2"; (lightly cleaned to original luster, and a little scattered minor light wear, otherwise excellent). Not necessarily a real strong color, but definitely a scarce color for a Monitor, one that you don't see very often. Provenance: Ron Rainka collection.

Est.: \$175 - \$350 • Min. bid: \$90



Lot 83

"J - & - I - E - M" Monitor Ink, 1875 – 1900. Yellow with some warmer honey tones below the neck and through the base, cylindrical with six block panels around the sides, domed shoulders, offset neck with tooled mouth – smooth base, ht. 1 5/8"; (a hard-to-see, little iridescent bruise, 1/8" or less, on the back edge of the lip, and some light interior milkiness, not terribly distracting, otherwise excellent). A beautiful example, very scarce color. Provenance: Ron Rainka collection.

Est.: \$500 - \$800 • Min. bid: \$250



Lot 87

"J - & - I - E - M" Monitor Ink, 1875 – 1900. Beautiful, medium citron coloration, cylindrical with six block panels around the sides, domed shoulders, offset neck with tooled mouth – smooth base, ht. 1 5/8", near mint; (just a trace of minor light wear, otherwise excellent). A very eye-appealing, scarce color, strong embossing. Provenance: Ron Rainka collection.

Est.: \$800 - \$1,200 • Min. bid: \$400



Lot 84

"J - & - I - E - M" Monitor Ink, 1865 – 1880. Rich honey amber, cylindrical with six block panels around the sides, domed shoulders, offset neck with factory ground mouth – smooth base, ht. 1 1/2", near mint; (just a touch of minor wear, and the bottle may have been lightly cleaned, otherwise perfect). Nice character, an unusually crude example, overall excellent condition. A lot of 'bang-for-the-buck' as you don't find colored Monitor inks that often. Provenance: Rainka collection.

Est.: \$200 - \$400 • Min. bid: \$100



Lot 88

"J - & - I - E - M" Monitor Ink, 1865 – 1880. Sapphire blue, cylindrical with six block panels around the sides, domed shoulders, offset neck, ground mouth – smooth base, ht. 1 5/8"; (a little minor wear, and a 1/8" flake at one of the base corners; some very faint haze on the label panel, and the side of the neck above the label panel, otherwise excellent). A very rare color! In Ron's experience, the sapphire blue examples are actually more difficult to find than cobalt. Ron Rainka collection.

Est.: \$1,200 - \$2,200 • Min. bid: \$400



Lot 89

“**J - & - I - E - M**” – “**PATD OCT 31ST 1865**” (around shoulder), **Monitor Ink**, 1865 – 1875. Ice blue coloration, cylindrical with six block panels around the sides, domed shoulders, offset neck with factory ground mouth – smooth base, ht. 1 ½”, perfect. A delicate, very pretty example, scarce color. Provenance: Ron Rainka collection.

Est.: \$400 - \$800 • Min. bid: \$200



Lot 93

Lot of (3), “J - & - I - E - M” Monitor Ink Bottles (all with original, and different labels), 1875 – 1900. All are aquamarine, cylindrical with six block panels around the sides, domed shoulders, offset neck, two with sheared mouths, third example with larger neck and very crude, narrow square collar – all smooth base, ht. 1 ½”, 1 5/8” and 1 ¾”; (1st Ex. has a 3/16” flake and 1/8” open bubble at base edge; remaining two examples are perfect; each with some varying label loss). Ron Rainka collection.

Est.: \$150 - \$250 • Min. bid: \$80



Lot 90

“**J - & - I - E - M**” **Monitor Ink**, 1865 – 1880. Medium blue green, cylindrical with six block panels around the sides, domed shoulders, offset neck with ground mouth – smooth base, ht. 1 ½”; (just a touch of light wear including a 3/16” area of roughness, or minor abrasion on one of the panel edges below the shoulder, a 1/8 flake, possibly in-manufacture, on the factory ground mouth, otherwise excellent). A scarce, very attractive color. Provenance: Ron Rainka collection.

Est.: \$800 - \$1,200 • Min. bid: \$400



Lot 94

Original Wooden Patent Model, or Pattern, for J.& I.E.M ‘Monitor’ Ink, c.1865. This original full-scale wooden patent model is for the famous Moore ‘Monitor’, or ‘turtleback’ ink patented on October 31, 1865. It was acquired from the I. Walter Moore house in Warren, Mass. on 12/3/69, and is accompanied by a signed affidavit from Mrs. I. Walter Moore.

Est.: \$200 - \$400 • Min. bid: \$100



Lot 91

“**J - & - I - E - M**” **Monitor Ink**, 1875 – 1900. Deep blue green, almost a teal coloration, cylindrical with six block panels around the sides, domed shoulders, offset neck with tooled mouth – smooth base, ht. 1 5/8”, near mint; (the bottle may have been lightly cleaned, but certainly presents as virtually perfect, a couple of ¼” scratches on the base). Beautiful, rich, deep color, very scarce. Provenance: Ron Rainka collection.

Est.: \$1,000 - \$2,000 • Min. bid: \$500



Lot 95

Original Wooden Patent Model, or Pattern, for Large J.& I.E.M ‘Monitor’ Ink, probably 1865 – 1870. Original full-scale wooden patent model for a large, probably 2oz, ‘Monitor’ type ink. To date, no large, 2oz size, Monitor ink bottles are known to exist. It was likely never put into production. This model was acquired from the I. Walter Moore house in Warren, Mass. on 12/3/69, and is accompanied by a signed affidavit from Mrs. I. Walter Moore.

Est.: \$200 - \$400 • Min. bid: \$100



Lot 92

“**J - & - I - E - M**” **Monitor Ink**, 1865 – 1880. Medium bluish green with a teal tone, almost a clear teal green, cylindrical with six block panels around the sides, domed shoulders, offset neck with factory ground mouth – smooth base, ht. 1 5/8”; (a trace bit of very faint content residue, otherwise perfect!) A very scarce color, beautiful condition. Provenance: Ron Rainka collection.

Est.: \$800 - \$1,200 • Min. bid: \$400



Lot 96

Original Wooden Patent Model, or Pattern, from the J. & I. E. Moore Ink Company, probably 1875 – 1885. Original wooden patent model for small square inkwell, possibly intended as a travel ink or for a stationery set. It is unlikely that this model was ever entered into production. This model was acquired from the I. Walter Moore house in Warren, Mass. on 12/3/69, and is accompanied by a signed affidavit from Mrs. I. Walter Moore.

Est.: \$200 - \$400 • Min. bid: \$100



Lot 97

Original Wooden Patent Model, or Pattern, from the J. & I. E. Moore Ink Company, probably 1875 – 1885. Original wooden patent model for small square inkwell with rounded corners, possibly intended as a travel ink, or for a stationery set. It is unlikely that this model was ever entered into production. This model was acquired from the I. Walter Moore house in Warren, Mass. on 12/3/69, and is accompanied by a signed affidavit from Mrs. I. Walter Moore.

Est.: \$200 - \$400 • Min. bid: \$100



Lot 98

Original Wooden Patent Model, and Matching Moore Inkwell, c. 1885. Wooden, hand-made, full-scale patent model for 1oz. cylindrical Moore's inkwell. Inkwell with period 'new old stock' label, tooled ring collar – **"MOORE'S / 1885"** (on smooth base), ht. 2 ¼"; (bottle has just a trace of faint haziness, otherwise both are perfect). The original wooden patent model was found in the Moore residence, Warren, MA, and is likely unique. Provenance: Ron Rainka collection.

Est.: \$150 - \$300 • Min. bid: \$80



Lot 99

Original Wooden Patent Model, and Matching Moore Inkwell, c. 1885. Wooden, hand-made, full-scale patent model for 2oz. cylindrical Moore's inkwell. Inkwell with partial original label, tooled ring collar – **"MOORE'S / 1885"** (on smooth base), ht. 2 ½", both are perfect; (some dried content residue in bottle). The original wooden patent model was found in the Moore residence, Warren, MA, and is likely unique. Bottle is the scarce 2oz. size. Ron Rainka collection.

Est.: \$150 - \$300 • Min. bid: \$80



Lot 100

Lot of (3), Different Moore Inkwells (all with original labels), 1885 – 1915. 1st Ex: Aqua, cylindrical, tooled ring collar – smooth base, ht. 2 3/8", label: **MOORE'S / RED OFFICE INK** (partial contents). **2nd Ex:** Clear, cylindrical, machine lip, ht. 2 ½", label: **MOORE'S / WRITING FLUID**. **3rd Ex:** Aqua, cylindrical, tooled ring collar – **"MOORE'S / 1885"** (on

smooth base), ht. 2 ¼", label: **MOORE'S / WRITING FLUID**; (shallow shoulder flake on 3rd, otherwise all near mint). Ron Rainka collection.

Est.: \$100 - \$200 • Min. bid: \$50



Lot 101

"J. & I. E. MOORE" Master Ink, 1875 – 1885. Light-to-medium blue green, cylindrical, applied inverted tapered collar with pour spout on inner rim of lip – **"PATENTED APRIL 13TH 1875"** (on smooth base), ht. 7 ½", near mint; (small patch of very minor haze below shoulder on reverse, a bit of light interior washable residue, otherwise virtually perfect). Scarce. A very attractive example, good color, crisp embossing, nicely whittled. Provenance: Ron Rainka collection.

Est.: \$200 - \$300 • Min. bid: \$100



Lot 102

"J. & I. E. MOORE" Master Ink (with 85% original label), 1875 – 1885. Rich, emerald coloration, cylindrical, applied inverted tapered collar with pour spout on inner rim – **"PATENTED APRIL 13TH 1875"** (on smooth base), ht. 7 ½", attic mint; (trace of interior content residue; original label darkened a bit from age, but mostly legible). Very scarce, strong color, rare with original label which reads in part, **MOORE'S / EXCELSIOR / WRITING INK**. Provenance: Ron Rainka collection.

Est.: \$300 - \$500 • Min. bid: \$150



Lot 103

"J. & I. E. MOORE" Master Ink, probably 1885 – 1895. Aquamarine, cylindrical, tooled sloping collar with pour spout – smooth base, ht. 7 ¾", pint, virtually attic mint; (just a slight trace of very light wear, otherwise perfect). A scarce mold, fantastic condition. Provenance: Ron Rainka collection.

Est.: \$200 - \$400 • Min. bid: \$100



Lot 104

"J. & I. E. MOORE" Master Ink (with colorful original label and contents), 1885 – 1895. Aquamarine, cylindrical, tooled sloping collar with pour spout – smooth base, ht. 6 3/8", ½ pint; (the bottle is near perfect, just a little 1/8" flake on the edge of the collar; original colorful label is beautiful, and in overall excellent condition). A great looking example, beautiful multi-color label, scarce with contents and in this state of preservation. Provenance: Ron Rainka collection.

Est.: \$600 - \$900 • Min. bid: \$300



Lot 105

“J. & I. E. MOORE” Master Ink (with original label, partial contents), 1885 – 1895. Aquamarine, cylindrical, tooled sloping collar with pour spout – smooth base, ht. 7 ¾”, pint; (bottle is perfect; label has some fading from age, but legible). Label reads in part, *RED / OFFICE INK / J. & I. E. MOORE, / WARREN, MASS. USA.*. Scarce pint mold, very scarce with original label and contents. Provenance: Ron Rainka collection.

Est.: \$300 - \$500 • Min. bid: \$150



Lot 109

J. & I. E. MOORE Ledger of Correspondence, probably 1900 – 1911. 499-page hardbound ledger containing thin, translucent, tissue-paper or vellum-type pages documenting copies of letters and correspondence of the Moore Ink Co. to various glass-houses, businesses, individuals, etc., approx. 10 3/8” x 12 1/8”;

(some staining to covers; minor water damage around perimeter of pages, legibility of pages varies). A unique, historically important document. Ron Rainka collection.

Est.: \$200 - \$400 • Min. bid: \$100



Lot 106

“J. & I. E. MOORE” Master Ink (with original label, partial contents), 1885 – 1895. Aquamarine, cylindrical, tooled sloping collar with pour spout – smooth base, ht. 9 ¼”, quart; (bottle is perfect, but has some light interior content haze; label approximately 90% complete, but quite faded and with some staining). Large quart size, label reads in part, *RED / OFFICE INK / J. & I. E. MOORE, / WARREN, MASS. USA.*. Provenance: Ron Rainka collection.

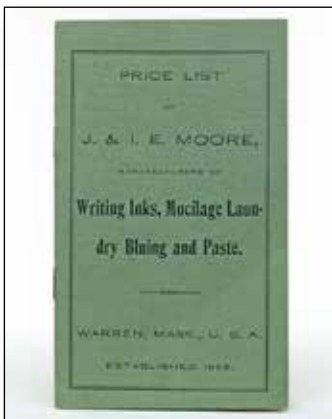
Est.: \$150 - \$250 • Min. bid: \$80



Lot 110

“WARRENS – CONGRESS – INK” Master Ink, 1845 – 1855. Aqua, octagonal, sheared, tooled, thin flanged lip – blowpipe pontil scar, ht. 4 ¼”; (professionally cleaned to original luster with just a slight, barely noticeable, faint haziness remaining, and a tiny flake, less than 1/8”, on the underside of the thin flanged lip, otherwise excellent). Faulkner, p.143. Scarce. Remnants of a paper label on an umbrella ink indicate the company was from Wheeling, VA. John Wilson collection.

Est.: \$175 - \$350 • Min. bid: \$90



Lot 107

Original J. & I. E. Moore Price List & Advertising Catalog, 1891 – 1895. 12-page B&W catalog with green covers provides a comprehensive listing of their various products including Inks, Mucilage Laundry Bluing and Paste. Catalog includes detailed images (pen and ink drawings), of their various bottles (with labels), prices by the dozen, or gross; 3 3/8” by 5 3/4”, virtually perfect condition. Extremely rare, found in the Moore residence, one of only three known. Ron Rainka collection.

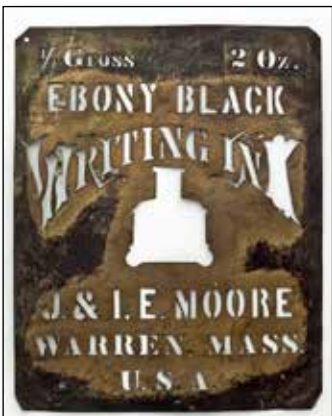
Est.: \$200 - \$400 • Min. bid: \$100



Lot 111

“J.S. MASON / PHILAD.A” Master Ink, 1850 – 1860. Light bluish green coloration, cylindrical, applied sloping collar – blowpipe pontil scar, ht. 6”; (a few small spots of minor wear or light scratches; a 3/8” deeper scratch below the shoulder on the reverse, and some light interior haziness). Faulkner, pgs. 86-87. Likely a dug bottle, but displays quite nicely, and if desired, would respond well to just a light professional cleaning. A scarce mold, very strong embossing. John Wilson collection.

Est.: \$150 - \$250 • Min. bid: \$80



Lot 108

Original J. & I. E. MOORE Brass Stencil, probably 1885 – 1900. Stencil reads, *“1/4 Gross 2 Oz / EBONY BLACK / WRITING INK” / (silhouette of bottle) / “J. & I. E. MOORE / WARREN, MASS. / U.S.A.”*, stencil measures 8 3/8” x 9 3/4”; (the left fork of the “K” in “INK” is missing; bottom corner tips are curled a bit, appears well used but is otherwise complete). An extremely rare, ‘go-with’ for the ink collector which was likely used to mark wooden crates. Ron Rainka collection.

Est.: \$800 - \$1,200 • Min. bid: \$400



Lot 112

Lot of (2), “HOVER / PHIL.A” Master Ink Bottles, 1845 – 1860. **1st Ex:** Medium sea-green, cylindrical, sheared, tooled, thin flanged lip – blowpipe pontil scar, ht. 4 3/8”; (a dug bottle with some patchy haze, light ground wear and swirl lines, but no other form of damage). **2nd Ex:** Light bluish green, cylindrical, applied sloping collar – blowpipe pontil scar, ht. 5 ¼”, attic mint. A great example, strong embossing, loaded with tiny bubbles. Faulkner, pgs. 81-82. John Wilson collection.

Est.: \$175 - \$350 • Min. bid: \$90



Lot 113

“HARRISON'S / COLUMBIAN / INK”, 1847 – 1860. Bright sapphire blue, almost a cobalt coloration, cylindrical, sheared, tooled, and inward rolled mouth – blowpipe pontil scar, ht. 1 7/8”, attic mint! C #194. A great example, bright, sparkling, whittled, excellent clarity, crisp embossing, outstanding condition.

Est.: \$400 - \$600 • Min. bid: \$200



Lot 117

“HARRISON'S – COLUMBIAN – INK”, 1847 – 1860. Aquamarine, octagonal, applied wide flanged mouth – blowpipe pontil scar, ht. 3”, perfect. A clean, sparkling example, nice character, 'attic type' condition. Provenance: John Wilson collection.

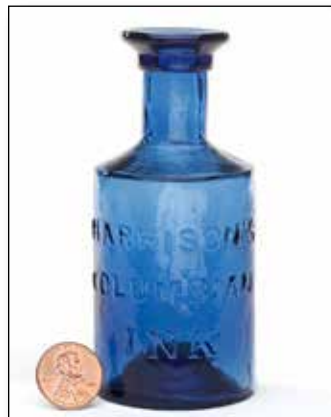
Est.: \$120 - \$240 • Min. bid: \$60



Lot 114

“HARRISON'S / COLUMBIAN / INK”, 1847 – 1860. Sapphire blue, octagonal body with 8 flat shoulder panels, sheared and inward rolled mouth – blowpipe pontil scar, ht. 1 7/8”; (a 1/4” chip on the edge of the collar at the side, just a trace of faint light haze or milkiness, the bottle may have been lightly cleaned, but presents as near mint). C #531; MW, plate 76, #12. A scarce mold, and certainly very scarce in sapphire blue.

Est.: \$800 - \$1,200 • Min. bid: \$400



Lot 118

“HARRISON'S / COLUMBIAN / INK” **Master Ink**, 1847 – 1860. Medium cobalt blue, cylindrical, applied wide flanged mouth – blowpipe pontil scar, ht. 4”, attic mint. Faulkner pgs. 68-69. A very pretty example and great eye-appeal with the appearance of the long neck on this 4” size. In addition, nicely whittled, excellent clarity, crisp embossing. Provenance: John Wilson collection.

Est.: \$600 - \$900 • Min. bid: \$300



Lot 115

“HARRISON'S / COLUMBIAN / INK”, 1847 – 1860. Clear, light-to-medium emerald coloration, octagonal body with 8 flat shoulder panels, sheared, tooled, and inward rolled mouth – blowpipe pontil scar, ht. 1 7/8”; (a hard-to-see, 1/4”, thin hairline fissure in the top of the rolled lip, and the bottle appears to have been lightly cleaned, but certainly presents as virtually perfect). Despite the minor lip flaw, a beautiful example, rare color, strong, crisp embossing. John Wilson collection.

Est.: \$800 - \$1,200 • Min. bid: \$400



Lot 119

“HARRISON'S / COLUMBIAN / INK” **Master Ink**, 1847 – 1860. Deep cobalt blue, cylindrical, applied flanged mouth – blowpipe pontil scar, ht. 4 3/8”; (some exterior haze and dullness, a bit of interior haze; a 5/16” chip on the top of the flanged mouth, and some minor wear including a pinhead flake below the shoulder). Strong, deeper color than most. The bottle would likely respond well to light professional cleaning, and beyond the noted lip chip, would present as near mint. John Wilson collection.

Est.: \$175 - \$350 • Min. bid: \$90



Lot 116

“HARRISON'S – COLUMBIAN – INK”, 1847 – 1860. Aquamarine, octagonal, applied wide flanged mouth – blowpipe pontil scar, ht. 2 1/2”; (exterior lightly cleaned to original luster, and a bit of patchy light interior haze, not terribly distracting, otherwise near mint). Note; this is the variant without “Patent” embossed on the shoulder. Provenance: John Wilson collection.

Est.: \$120 - \$240 • Min. bid: \$60



Lot 120

“HARRISON'S / COLUMBIAN / INK” **Master Ink**, 1847 – 1860. Bright medium cobalt blue, cylindrical, applied wide flanged mouth – blowpipe pontil scar, ht. 5 3/4”; (a shallow little 1/8” flake on the back edge of the lip; a 3/16” flake at the edge of the base, and a tiny pinhead iridescent flake near the side mold seam, otherwise virtually perfect). A bright, clean, whittled, pretty example that appears to be an attic-type find. Provenance: John Wilson collection.

Est.: \$600 - \$900 • Min. bid: \$300



Lot 121

“**HARRISON’S – COLUMBIAN – INK**” Master Ink, 1847 – 1860. Medium cobalt blue, 12-sided, applied wide flanged mouth – heavy iron pontil scar, ht. 11 ½”, 1-gallon, virtually perfect; (just a trace of faint wear including a couple of minor paper-thin open bubbles). Considered by many to be the ‘Holy Grail’ for ink collectors, and a centerpiece in any collection. Outstanding character, filled with bubbles, gorgeous color, clarity, and condition. Provenance: Ex. Watt White, Brian Grapentine collections.

Est.: \$30,000 - \$50,000 • Min. bid: \$15,000



Lot 125

Embossed Horizontal Rings Target Ball, America, 1875 – 1900. Rich, medium-to-deep cobalt blue, almost a violet tone near the shoulders, embossed with (7), heavy horizontal rings, 3-piece mold, rough sheared mouth, dia. 2 5/8”, perfect. A scarce ball that comes in several colors. We sold a deep chocolate amber example in the last sale. This is a very pretty example in a beautiful, rich cobalt. Provenance: John Wilson collection.

Est.: \$300 - \$500 • Min. bid: \$150



Lot 122

Shooter Ball (Image of a Man Shooting a Gun within circle), England, 1875 – 1900. Light smoky amethyst, almost a periwinkle coloration, quilted diamond pattern, 3-piece mold, rough sheared mouth, dia. 2 5/8”, perfect. Scarce, very desirable ‘shooter ball’ mold, rare color! This ball is a chameleon that changes color according to the lighting. Regardless of the color terminology, it is a very eye-appealing target ball. Strong impression, beautiful condition. John Wilson collection.

Est.: \$400 - \$600 • Min. bid: \$200



Lot 126

Crude, Large Diamond (embossed on base), Target Ball, 1875 – 1900. Honey amber, 3-piece mold, rough sheared mouth, dia. 2 5/8”, perfect. Scarce. A very pretty ball with crude ‘syrupy’ glass. The large, crude, diamond motif embossed on the base may have been a glasshouse mark. Provenance: John Wilson collection.

Est.: \$200 - \$400 • Min. bid: \$100



Lot 123

“**BOGARDUS’ GLASS BALL PATD APRIL 10 1877.**” – “8” (within diamond panel), **Target Ball**, England, 1877 – 1900. Light yellowish ‘mossy’ green, quilted diamond pattern, 3-piece mold, rough sheared mouth, dia. 2 5/8”, perfect. A rare and attractive color for a Bogardus ball, excellent clarity, impression, and condition. Capt. Adam Bogardus is known as the father of target balls. He is credited with patenting the first glass target ball and target ball trap in 1877. John Wilson collection.

Est.: \$400 - \$600 • Min. bid: \$200



Lot 127

Lot of (2), “IRA PAINE’S FILLED BALL PAT. OCT. 23 1877”, America, 1877 – 1900. Brilliant yellow and honey amber, both are 3-pc. mold, rough sheared mouth, dia. 2 5/8; (yellow example is perfect, but with a slightly weak impression as is typical; honey amber example has some interior stain and cloudiness, and some light exterior dullness). Ira Paine was a leading sharpshooter of the day. His ads noted the balls to be “the only substitute ever invented for a living bird”. John Wilson collection.

Est.: \$400 - \$600 • Min. bid: \$200



Lot 124

“**FROM BOGARDUS & CO / SHOOTING GALLERY / 158 / SOUTH CLARK / ST / CHICAGO – BOGARDUS GLASS BALL / PATD APR. 10 77**”, 1877 – 1890. Rich, deep amber coloration, quilted diamond pattern, 3-pc. mold, rough sheared mouth, dia. 2 5/8”, perfect. Extremely rare! The Bogardus shooting gallery balls are generally considered the choicest, and most sought after, of all the various Bogardus molds.

Est.: \$5,000 - \$10,000 • Min. bid: \$2,500



Lot 128

Annie Oakley Glass Ball, America, 1890 – 1905. Honey amber, freeblown ball filled with feathers and a crepe-type fabric, “A” (inside an “O”), stamped on wax seal, dia. 3 ¼”, perfect. It is theorized that the balls were sold, or given as a prize, at shows where Annie Oakley performed. See, *On Target!*, issue 57, 2014. The balls were reportedly from the estate of “Rodeo Earl Smith”, who began his career as a young man in the 1890’s, performing as a trick rider and roper in the Wild West Shows.

Est.: \$200 - \$400 • Min. bid: \$100

A Beautiful Array of Colorful & Rare Mineral Water Bottles



Lot 258



Lot 251



Lot 254



Lot 257



Lot 255



Lot 273

Lot 256

Lot 269

Lot 265



Lot 129

Annie Oakley Glass Ball, America, 1890 – 1905. Beautiful honey coloration with attractive splotches of light brown and reddish amber glass swirled throughout, filled with feathers and other crepe-type material, “A” (inside an “O”), stamped on wax seal, dia. 3 ¼”, perfect. As noted in the previous lot, it is theorized that the balls were sold, or possibly given as a prize, at shows where Annie Oakley performed. A great “go-with” for the Target Ball collector.

Est.: \$200 - \$400 • Min. bid: \$100



Lot 130

Annie Oakley Glass Ball, America, 1890 – 1905. Honey coloration with profuse splotches of medium-to-deep amber, almost black amber in the shoulders and base, filled with red and off-white, or cream colored feathers and crepe-type material, “A” (inside an “O”), stamped on wax seal, dia. 3 ¼”, near perfect; (the stamped “A” within “O” is a little difficult to clearly read, but still visible, likely due to heat exposure at some point). A very attractive ball, and a bit heavier in weight.

Est.: \$200 - \$400 • Min. bid: \$100



Lot 131

Annie Oakley Glass Ball, America, 1890 – 1905. Light honey amber with some scattered splotches of amber swirled through the glass, filled with colorful pinkish-red feathers, “A” (inside an “O”), stamped on wax seal, dia. 3 ¼”; (a hard-to-see 5/8” cooling line, or fissure, extending from the lip, in the shoulder, likely in-manufacture, otherwise perfect). Nice colorful feathers, strong impression on the wax seal.

Est.: \$150 - \$300 • Min. bid: \$80



Lot 132

“MAGIC / FIRE / EXTINGUISHER CO”, 1875 – 1895. Bright golden amber, almost a rich honey coloration, 3-pc. mold, bulbous body with two ‘50-cent’ piece size flat circular spots on the shoulders, large bulbous ring on neck below rough sheared mouth – smooth base, ht. 6 1/8”, perfect. Very scarce. A beautiful example, excellent character, heavily whittled!

Est.: \$400 - \$600 • Min. bid: \$200



Lot 133

“PURE FOOD / CIGAR / MANUFACTURED / BY / HETTERMANN / BROS Co / LOUISVILLE / KY – FACTORY NO / 23 / 5TH DISTRICT / OF / KENTUCKY – PURE / FOOD / CIGAR”, 1885 – 1895. Beautiful light yellow, almost a straw coloration, hexagonal, threaded neck with factory ground mouth, original tin closure – smooth base, ht. 6 5/8”, perfect. Scarce! Gorgeous color, lighter in tone than most. Provenance: John Wilson collection.

Est.: \$200 - \$400 • Min. bid: \$100



Lot 134

“PEERLESS FOOD / CIGAR / MANUFACTURED / BY / FREEMAN / BROS & CO / BALTIMORE MD – A 10¢ / CIGAR / FOR / 5¢ – PEERLESS FOOD / CIGAR / MANUFACTURED / BY / FREEMAN / BROS & CO / BALTIMORE MD – FACTORY / No 1108 / DISTRICT / OF / MARYLAND / 50”, 1885 – 1900. Yellowish honey coloration, hexagonal, threaded neck with factory ground mouth, original tin closure – smooth base, ht. 6 ½”, perfect. John Wilson collection.

Est.: \$200 - \$400 • Min. bid: \$100



Lot 135

Lot of (3), Tobacco Jars, 1890 – 1910. (2), “**OLD RELIABLE / CHANCELLOR / CIGARS / ALWAYS BEST / ALWAYS UNIFORM**” Jars. Honey amber and deep amber, both ground mouth, original stamped tin closures, 5 ½”. **3rd Ex: “TEMPLE, HUMMEL, ELLIS, CO. / MANUFACTURERS / OF / HIGH GRADE HAVANA CIGARS / SOUTH BEND, IND.”**

Straw yellow, ground mouth, tin closure, ht. 5 ½”; (lid does not fit tight on Temple Jar; 2 slits in lid of one Chancellor Jar). John Wilson collection.

Est.: \$200 - \$400 • Min. bid: \$100



Lot 136

Lot of (3), Tobacco Jars, 1890 – 1915. **1st Ex: “AIR-TIGHT”**, amber, ground mouth, tin closure, ht. 5”. **2nd Ex: “E.C. CHANDLER / MAKER / FACTORY No. 918 / FIRST DISTRICT / ILL.”**, colorless, threaded neck, smooth lip, tin closure, ht. 5 ¼”. **3rd Ex: “La Azora” – “FIRST**

DISTRICT MICHIGAN / FACTORY No 40” (on base), “**La Azora / LILIENTFELD BROS & Co / CHICAGO, ILL / THE CIGAR OF CIGARS”** (stamped on tin lid), amber, ground mouth, ht. 5 3/8”, all near mint. John Wilson collection.

Est.: \$150 - \$250 • Min. bid: \$80



Lot 137

“TRADE MARK / LIGHTNING” Fruit Jar, 1885 – 1900. Light yellow near the base shading to a rich, medium-to-deep yellow with an olive tone through the shoulders, cylindrical, ground mouth with original wire bail, **“PATD APR. 25. 82 / PATD JAN. 5. 75 / RE-ISED JUNE 5. 77.”** (on matching glass lid) – **“PUTNAM / 69”** (on smooth base), half gallon, very near mint; (a shallow 1/8” flake on the top of the ground mouth, otherwise perfect). RB #1489. Beautiful condition.

Est.: \$200 - \$400 • Min. bid: \$100



Lot 141

Cathedral Peppersauce Bottle, 1850 – 1860. Rich, deep blue green, hexagonal, arched Gothic panels on six sides, ornamental trefoil and flower motif on shoulders, applied ring collar – blow-pipe pontil scar, ht. 8 ¾”; (there is a ¼” iridescent bruise at the edge of the beveled base on one of the six panels, the panel edge has also been polished to help mitigate the bruise, otherwise near perfect). A bright, sparkling example, very strong color – one of the deepest that we have seen.

Est.: \$300 - \$600 • Min. bid: \$200



Lot 138

Lot of (3), **“TRADE MARK / LIGHTNING / REGISTERED / U.S. PATENT OFFICE” Fruit Jars**, probably 1910 – 1915. All are cornflower blue, machine made, smooth lip with original wire bails and matching cornflower blue glass lids – **“PUTNAM”** (on base), Pt, Qt, and HG, near mint-to-mint; (Pt. has a little 3/16” iridescent bruise

on the lip, and shallow ¼” flake on shoulder seat; HG has a ½” chip on lip, and the Qt. is perfect). RB #1501. Crisp, bold embossing on the pint.

Est.: \$500 - \$800 • Min. bid: \$250



Lot 142

Cathedral Peppersauce Bottle, 1850 – 1860. Beautiful, medium cobalt blue coloration, hexagonal, arched Gothic panels on six sides with inner frame, ornamental trefoil and key motif on shoulders, applied ring collar with bevel – smooth base, ht. 8 5/8”; (lightly cleaned to original luster, and a little light wear along one of the panel edges mentioned for completeness, otherwise very near mint). A top Cathedral peppersauce, beautiful condition, very rare color!

Est.: \$2,500 - \$4,500 • Min. bid: \$1,300



Lot 139

“SANETY / - WIDE MOUTH - / MASON / SALEM GLASS WORKS / SALEM, N.J. - HOLT'S JAR CREAM WHIPS / HOLT-LYON CO. / TARRYTOWN, N.Y.” (with original “Holt's Egg Beater” attachment), 1905 – 1910. Aquamarine, threaded neck, wide mouth, ground lip, ½ gallon; (jar has a ¼” flake on outer edge of ground mouth, and a few shallow iridescent flakes, or bruises, on the inside edge of the lip; metal beater has a little pitting, otherwise excellent). RB #2549-2.

Est.: \$300 - \$600 • Min. bid: \$150



Lot 143

“ST LOUIS – SPICE – MILLS” Cathedral Peppersauce Bottle, 1860 – 1870. Light yellowish apple green, square with rounded corners, Gothic panels on all four sides, embossed diamond paned windows on shoulders, applied double round collar – smooth base, ht. 8 ½”, attic mint. An exceedingly rare and important peppersauce bottle – possibly unique in this light apple green coloration. The mold is virtually identical to the Western Spice Mills bottle. John Wilson collection.

Est.: \$800 - \$1,200 • Min. bid: \$400



Lot 140

“MASON'S / PATENT / NOV 30TH / 1858”, 1900 – 1910. ‘Ball-blue’ with beautiful, light-to-medium yellowish olive striations swirled throughout, cylindrical, threaded neck with smooth lip, zinc lid – base with single dot at center, half gallon, virtually perfect; (a 1/8” paper-thin open bubble on the reverse). RB #1787. A very pretty example with nice character and beautiful syrupy glass. The yellow olive swirls culminate with a lollipop or pinwheel effect in the base.

Est.: \$200 - \$400 • Min. bid: \$100



Lot 144

“WESTERN – SPICE – MILLS” Cathedral Peppersauce Bottle, 1860 – 1870. Aquamarine, square with rounded corners, Gothic panels on all four sides, embossed diamond paned windows on shoulders, applied double collar – smooth base, ht. 8 ¾”, virtually perfect; (a potstone on the inside surface of the neck with an ever-so-slight iridescence, and a tiny 1/16” line, barely visible without a loop, otherwise mint). A bright, clean example, very rare, outstanding condition. John Wilson collection.

Est.: \$500 - \$800 • Min. bid: \$250



Lot 145

“WESTERN – SPICE – MILLS” Cathedral Peppersauce Bottle, 1860 – 1870. Brilliant yellow with an olive tone, square with rounded corners, Gothic panels on all four sides, embossed diamond paned windows on shoulders, applied double round collar – smooth base, ht. 8 ½”; (a well hidden, ½” hairline fissure from impurities in the shoulder, otherwise virtually perfect). An absolutely stunning bottle, rare mold, extremely rare color, outstanding character. Ex. Charles Aprill collection.

Est.: \$3,000 - \$6,000 • Min. bid: \$1,500



Lot 146

Cathedral Pickle Jar, possibly a Mid-Atlantic glasshouse, 1850 – 1860. Light aquamarine, square with beveled corners, Gothic panels on all four sides with tall arched inner panels below a large trefoil motif on the shoulders, small scalloped designs embossed above base on all four sides, sheared mouth with applied ring collar – large blowpipe pontil scar, ht. 11 ½”, attic mint! A very scarce pickle jar, and even more so with the blowpipe pontil scarred base.

Est.: \$300 - \$500 • Min. bid: \$150



Lot 147

Cathedral Pickle Jar, probably Mid-Atlantic, possibly Crowleytown Glass Works, 1850 – 1860. Deep blue green, square with beveled corners, arched Gothic panels with pendant and bell motif below top of frame, palmette on shoulders above frame, sheared mouth with ring-type collar – iron pontil scar, ht. 11 5/8”, near mint; (a couple of bubbles below the shoulder, across the Gothic arch, have partially open cover glass). Strong color, excellent character with whittled, wavy glass.

Est.: \$800 - \$1,200 • Min. bid: \$400



Lot 148

Giant, Cathedral Pickle Jar, Mid-Atlantic, 1860 – 1870. Medium blue green, square, beveled corners, arched Gothic panels with pendant and bell motif below top of frame on three sides, fourth panel blank for a label, palmette on shoulders above frame, applied ring collar – smooth base, ht. 13 ¾”, near mint; (a little sandgrain on the inside surface of the shoulder has just a tiny iridescence, barely visible without a loop, and a trace bit of wear, otherwise excellent). Good color.

Est. \$400 - \$800 • Min. bid: \$200



Lot 149

Rare, Large, Wide-Mouth Pickle Jar, Willington Glass Works, West Willington, CT, 1850 – 1860. Aquamarine, square with beveled corners, Gothic panels with grooved columns, expanded wide neck with a sheared, tooled, and outward folded mouth – sand type pontil scar, ht. 13”; (a faint band of light interior milkiness in the shoulders, otherwise virtually perfect). A very scarce and desirable large Willington Jar, extremely rare with the expanded mouth. Fred Swiechowicz collection.

Est.: \$1,000 - \$2,000 • Min. bid: \$500



Lot 150

Giant, Cathedral Pickle Jar, probably a Mid-Atlantic glasshouse, 1850 – 1860. Strong, medium-to-deep green with an emerald tone, square, beveled corners, large Gothic windows with embossed diamond, or lattice pattern, on three sides; arched Gothic windows with lattice pattern on shoulders, sheared mouth with applied ring collar – iron pontil scar, ht. 13 ¾”, near mint; (a little minor high point wear, and a 3/8” shallow open bubble on the shoulder). Ex. Ed Barber, Terry Gillis collections.

Est.: \$3,000 - \$6,000 • Min. bid: \$1,500



Lot 151

Large, Cathedral Pickle Jar, 1865 – 1885. Light apple green, hexagonal with arched Gothic panels on all six sides, trefoil motif on shoulders, scalloped edge at bottom of each panel, applied square collar – smooth base, ht. 13 1/8”, perfect. MW, plate 73, #10. A scarce color (typically found in aquamarine, fantastic condition). Note; several examples have been found with remnants of the original label. The labels indicate that the bottle held gerkins from W.K. Lewis & Bros, Boston, MA.

Est.: \$175 - \$350 • Min. bid: \$90



Lot 152

“CASPER’S WHISKEY / MADE BY HONEST / NORTH / CAROLINA PEOPLE”, 1885 – 1900. Medium-to-deep cobalt blue, cylindrical with fluted shoulders, tooled sloping collar with ring – smooth base, ht. 11 ¾”; (the embossing around the perimeter of the slugplate, “Casper’s Whiskey / Carolina People” is a little weak, otherwise near mint with a little scattered minor wear, and some light interior residue that would likely wash out). Provenance: Bruce Purdy collection.

Est.: \$250 - \$450 • Min. bid: \$130



Lot 153

Unembossed Spirits, Bitters or Medicinal Utility Bottle, America, 1850 – 1860. Rich, brilliant olive yellow coloration, square with beveled corners, applied sloping collar with bevel – iron pontil scar, ht. 10 1/8", attic mint! An absolutely stunning bottle in terms of both color and character. An eye-appealing, beautiful utility that will stand out on any shelf, very heavily whittled, virtually pristine condition. Certainly one of the prettiest bottles in the sale. Provenance: John Wilson collection.

Est.: \$250 - \$450 • Min. bid: \$130



Lot 157

"UDOLPHO WOLFE'S – SCHIEDAM – AROMATIC / SCHNAPPS", America, 1865 – 1880. Brilliant honey, almost a butterscotch coloration, square with beveled corners, applied sloping collar – smooth base, ht. 9 3/8"; (professionally cleaned with just a touch of minor wear remaining, otherwise excellent). A nice bright example, rich color, 'square-shoulder' variant, which some folks consider to be an earlier variant, or mold.

Est.: \$200 - \$400 • Min. bid: \$100



Lot 154

"CHAS BACKMAN'S – HOLLAND – GENEVER CORDIAL", America, 1860 – 1870. Medium-to-deep olive, square, beveled corners, applied sloping collar with bevel – smooth base, ht. 9 1/2", near mint; (just a slight trace of minor wear including a very light, 1 3/4" scratch on one of the panels, and some minor interior residue, otherwise perfect). Extremely rare. Believed to be the only example, or possibly one of two, that have been offered at auction in more than 20 years! Fred Swiechowicz collection.

Est.: \$300 - \$500 • Min. bid: \$150



Lot 158

"UDOLPHO WOLFE'S – SCHIEDAM – AROMATIC / SCHNAPPS", America, 1865 – 1880. Beautiful, strawberry – apricot coloration, square with beveled corners, applied sloping collar – smooth base, ht. 9 3/4", near mint; (a few tiny, paper-thin, pinhead open bubbles; the bottle may have been very lightly cleaned, but certainly presents as virtually attic mint). A beautiful, bubbly example in a very pretty, rare color, that changes depending on the light, fantastic condition.

Est.: \$400 - \$600 • Min. bid: \$200



Lot 155

"VONTHOFEN'S – AROMATIC – SCHEIDAM / SCHNAPPS", America, 1850 – 1860. Medium emerald with a slight yellowish tone, square, beveled corners, applied sloping collar with bevel – iron pontil, ht. 7 7/8"; (professionally cleaned with a little scattered light ground wear remaining, and just a very faint dullness, or exterior sheen, otherwise excellent). A scarce schnapps, very rare size! Of the 7 sold at auction in the past 10 years, all were the 9 1/2" size. Note misspelling of Schiedam.

Est.: \$300 - \$500 • Min. bid: \$150



Lot 159

"A.M. BININGER & Co. / No. 19 BROAD ST / NEW-YORK" Handled Whiskey, probably 1861 – 1863. Medium amber, cylindrical with conical shoulders, applied handle curled at lower attachment, applied double round collar – smooth base, ht. 7 7/8"; (a little minor wear on the reverse, as well as a 1 1/4" light scratch near a side mold seam, otherwise near mint). BPK-31. A classic handled Bininger 'jug', overall, very nice condition. Provenance: Bruce Purdy collection.

Est.: \$250 - \$400 • Min. bid: \$130



Lot 156

"UDOLPHO WOLFE'S – SCHIEDAM – AROMATIC / SCHNAPPS", America, 1865 – 1880. Yellowish lime green coloration, square with beveled corners, applied sloping collar – smooth base, ht. 9 1/2"; (professionally cleaned to original luster with some light scratches and a little scattered minor wear remaining, otherwise excellent). A scarce and attractive color for a Udolpho Wolfe's. Large size, nice character with plenty of tiny bubbles scattered throughout.

Est.: \$200 - \$400 • Min. bid: \$100



Lot 160

"J L MOFFAT / DRUGGIST / HOLYOKE, MASS" Handled Redware Flask, 1840 – 1860. Two-tone, reddish-brown glaze around the shoulders, narrow blackish band below the shoulders, brownish glaze on body, flattened ovoid body, applied strap handle, short tapered collar, ht. 8 7/8", virtually perfect; (a few minor 1/4" chips around the base). Extremely rare! Druggist during this period often dispensed medicinal spirits, which is likely what this flask held. Fred Swiechowicz collection.

Est.: \$600 - \$900 • Min. bid: \$300



Lot 161

“Pure Old Rye / in a hog’s - ” **Incised Stoneware Figural Pig**, probably Anna Pottery, Anna, Illinois, 1875 – 1890. Dark brown glaze, anatomically correct female pig, length 7”, perfect! A very rare pottery whiskey, similar in style to the much more com-

mon, “good old Bourbon / in a hogs” figural glass examples. Provenance: Fred Swiechowicz collection.

Est.: \$800 - \$1,200 • Min. bid: \$400



Lot 165

“**OLD SACHEM / BITTERS / AND / WIGWAM TONIC**”, 1860 - 1875. Deep strawberry puce, barrel form, applied square collar – smooth base, ht. 9 1/8”; (a 1/4” x 1/2” chip on the inner-edge of the base that does not show on display, and just a touch of minor wear including a couple of paper-thin, 1/8” open bubbles mentioned for completeness, otherwise excellent). R/H #O46. Strong embossing, beautiful deep reddish strawberry tones, and the bottle displays quite nicely.

Est.: \$300 - \$500 • Min. bid: \$150



Lot 162

“**EVANS & RAGLAND / OLD / INGLEDEW / WHISKEY / LAGRANGE. GA**” (with 85% complete, period label), 1868 – 1875. Bright golden amber, cylindrical, applied short inverted tapered collar – smooth base, ht. 10”, near perfect; (a little minor light wear below shoulder; label darkened from age, but completely legible). A very scarce whiskey cylinder, extremely rare with early period label which reads in part, *Patterson Madeira. / ‘RAINWATER’ / 1808* / “Re-bottled 1884.

Est.: \$200 - \$400 • Min. bid: \$100



Lot 166

“**NATIONAL / BITTERS**” – “**PATENT / 1867**” (on base), America, 1867 – 1875. Beautiful light yellow, almost a straw coloration in the upper half, shading to a light golden yellow near the base, figural ear of corn, applied short tapered collar with ring – smooth base, ht. 12 3/8”, virtually attic mint; (a minor onionskin-thin open bubble on heel of base). R/H #N8. A gorgeous example, beautiful shading, absolutely fantastic color. Provenance: Ex. Elmer Smith collection.

Est.: \$1,600 - \$3,200 • Min. bid: \$900



Lot 163

“**MIST OF THE MORNING / S. M. / BARNETT & COMPANY**” Figural Barrel, 1868 – 1875. Golden amber shading to a rich honey coloration though the center, barrel form, applied sloping collar with ring – smooth base, ht. 9 7/8”, near mint; (some light interior residue, or faint haziness, some of which may wash out, otherwise perfect). A very attractive, lighter example, excellent condition. Per early ads discovered by Eric McGuire, Mist of the Morning was marketed and sold as a Bitters.

Est.: \$250 - \$450 • Min. bid: \$130



Lot 167

“**BROWN’S / CELEBRATED / INDIAN HERB BITTERS – PATENTED / 1867**”, America, 1867 - 1880. Golden amber shading to a lighter honey tone through the arms, figural Indian maiden, sheared and inward rolled lip - smooth base, ht. 12 1/8”, virtually attic mint; (a little light, almost certainly washable, interior residue, otherwise perfect). R/H #B223. A very nice example, virtually no wear, and with a perfect rolled lip. One of the great classics in figural bitters.

Est.: \$600 - \$900 • Min. bid: \$300



Lot 164

“**OLD SACHEM / BITTERS / AND / WIGWAM TONIC**”, 1860 - 1875. Bright golden amber, barrel form, applied square collar – smooth base, ht. 9 1/4”, virtually perfect; (just a bit of light dullness, ever-so-slight, around the back label panel, otherwise attic mint). R/H #O46. A very pretty example, beautiful condition.

Est.: \$300 - \$500 • Min. bid: \$150



Lot 168

“**THE / FISH BITTERS – W.H. WARE / PATENTED 1866**”, America, 1866 – 1875. Rich, medium-to-deep amber, figural fish, applied ring collar – smooth base, ht. 11 1/2”, very near mint; (a little pinhead flake and tiny bit of roughness on the edge of the applied ring collar; some very faint interior residue, barely noticeable, otherwise perfect). R/H #F45. A great example, strong embossing, overall excellent condition. Provenance: Fred Swiechowicz collection.

Est.: \$300 - \$500 • Min. bid: \$150



Lot 169

“DOCTOR / FISCHS BITTERS – W.H. WARE / PATENTED 1866”, America, 1866 – 1875. Beautiful, bright, light golden amber, almost a honey coloration, figural fish, applied ring collar – smooth base, ht. 11 3/8”, attic mint! A bright, sparkling clean example with a good impression, and almost no wear. R/H #F44. Provenance: Fred Swiechowicz collection.

Est.: \$400 - \$600 • Min. bid: \$200



Lot 173

“S T / DRAKE’S / 1860 / PLANTATION / X / BITTERS – PATENTED / 1862”, 1862 – 1880. Gorgeous lemon-yellow coloration, cabin form with 6 logs above the label panel, applied sloping collar – smooth base, ht. 10”, attic mint! R/H #D105. Absolutely fantastic color, very light through the corners, and nice and light all the way to the base. A bright, clean, very pretty yellow 6-Log. Examples this nice don’t come around often!

Est.: \$1,600 - \$3,200 • Min. bid: \$800



Lot 170

“SEAWORTH / BITTERS / CO. / CAPE MAY / NEW JERSEY / U.S.A. Figural Lighthouse, 1880 – 1890. Aqua, in the form of the famous Cape May, NJ lighthouse, tooled sloping collar – smooth base, ht. 11 1/4”; (lightly cleaned to original luster and near mint condition; a 1/4” x 3/8” iridescent bruise on the inside edge of the lip has been professionally repaired by one of the best in the business, otherwise excellent). R/H #S81. An extremely rare and important figural bitters.

Est.: \$10,000 - \$15,000 • Min. bid: \$5,000



Lot 174

“S T / DRAKE’S / 1860 / PLANTATION / X / BITTERS – PATENTED / 1862”, 1862 – 1880. Light yellowish honey along the lower roofline and below the shoulders, shading to a deeper honey, almost golden coloration towards the base, as well as in the applied collar, cabin form, 6 logs above the label panel, applied sloping collar – smooth base, ht. 9 5/8”, perfect! R/H #D108. A clean, bright, sparkling example. Beautiful variegated shading of color.

Est.: \$200 - \$400 • Min. bid: \$100



Lot 171

“E. DEXTER. LOVERIDGE / WAHOO BITTERS – (EAGLE) – E. DEXTER LOVERIDGE / WAHOO BITTERS – DWD – 1863 – XXX – PATD”, 1863 – 1875. Gorgeous citron green coloration, semi-cabin, applied sloping collar with band – smooth base, ht. 10 1/8”, attic mint! R/H #L126. An absolutely outstanding piece. It is unquestionably a premier example, perhaps THE premier example of a Wahoo Bitters in terms of color, clarity, character and virtually pristine condition.

Est.: \$8,000 - \$12,000 • Min. bid: \$4,000



Lot 175

“S T / DRAKE’S / 1860 / PLANTATION / X / BITTERS – PATENTED / 1862”, 1862 – 1880. Beautiful, medium-to-deep yellowish amber with strong olive tones, almost an olive yellow coloration, cabin form with 6 logs above the label panel, applied sloping collar – smooth base, ht. 10”; (only the slightest trace of minor wear, otherwise pristine perfect). R/H #D105. Great color, outstanding condition, another beautiful, scarce and attractive example from an old-time collection.

Est.: \$1,000 - \$2,000 • Min. bid: \$500



Lot 172

“S T / DRAKE’S / 1860 / PLANTATION / X / BITTERS – PATENTED / 1862”, 1862 – 1880. Medium-to-deep pinkish raspberry, cabin form with 6 logs above the label panel, applied sloping collar – smooth base, ht. 9 7/8”, near mint; (just a very slight trace of minor wear, and the embossing is a little weak in the upper shoulders as is not uncommon with this mold, otherwise perfect). R/H #D106. Outstanding, rare, eye-appealing color that passes plenty of light with plenty of pink!

Est.: \$2,000 - \$4,000 • Min. bid: \$1,000



Lot 176

“S T / DRAKE’S / 1860 / PLANTATION / X / BITTERS – PATENTED / 1862”, 1862 – 1880. Rich, medium-to-deep olive amber, cabin form with 6 logs above the label panel, applied sloping collar – smooth base, ht. 9 3/4”, very near mint; (a tiny, minuscule, pinhead bit of roughness on the edge of the collar, otherwise virtually pristine perfect). R/H #D105. A very scarce color, fantastic condition, excellent ‘pedigree’. Provenance: Ex. Charles B. Gardner collection (#1293 noted as ‘Yellow olive’).

Est.: \$400 - \$800 • Min. bid: \$200



Lot 177

"S T / DRAKE'S / 1860 / PLANTATION / X / BITTERS - PATENTED / 1862", 1862 - 1880. Clear, light-to-medium peach with some rich, deeper apricot tones in the upper shoulders and near the base, cabin form, 6 logs above the label panel, applied sloping collar - smooth base, ht. 10", near mint; (just a trace of light wear and a couple of minor open bubbles, 1/8" or less, near one of the roof corners on the reverse). R/H #D105. A very pretty example, lighter than most.

Est.: \$500 - \$800 • Min. bid: \$250



Lot 178

"S T / DRAKE'S / 1860 / PLANTATION / X / BITTERS - PATENTED / 1862", 1862 - 1880. Rich medium apricot amber with some lighter peach tones along the edges, cabin form with 6 logs above the label panel, applied sloping collar - smooth base, ht. 9 3/4", virtually attic mint; (just the slightest trace of light wear, otherwise perfect). R/H #D105. Strong embossing, attractive coloration, excellent condition.

Est.: \$300 - \$500 • Min. bid: \$150



Lot 179

Arabesque motif / "DRAKES" / Arabesque motif / "PLANTATION / BITTERS - PATENTED / 1862", 1862 - 1880. Medium amber with a slight apricot tone near the base, cabin form, applied sloping collar - smooth base, ht. 9 3/4", virtually attic mint; (only the slightest trace of faint wear including a tiny pinhead open bubble on the reverse, otherwise pristine). R/H #D102. Scarce and desirable "Arabesque" mold, strong embossing, fantastic condition.

Est.: \$400 - \$600 • Min. bid: \$200



Lot 180

"DRAKES / PLANTATION / BITTERS - PATENTED / 1869", 1869 - 1875. Beautiful yellowish honey coloration in the upper half, shading to a rich, bright honey amber towards the base, cabin form with 5 logs above the label panel, applied sloping collar - smooth base, ht. 9 3/4"; (just a slight touch of very faint wear at the roof edge, and a slightly weak impression in the shoulders, otherwise virtually perfect). R/H #D109. A very pretty example.

Est.: \$400 - \$600 • Min. bid: \$200



Lot 181

"S T / DRAKE'S / 1860 / PLANTATION / X / BITTERS - PATENTED / 1862", 1862 - 1880. Brilliant, lemon yellow coloration, cabin form with 4 logs above the label panel, applied sloping collar - smooth base, ht. 10 1/8", virtually attic mint; (a minor, very light, 1/2" scratch on the reverse label panel noted for completeness, and just a trace of interior residue or very faint haze, primarily in the base, otherwise pristine). R/H #D110. Brilliant glass, outstanding 'see-through' clarity, fantastic color!

Est.: \$1,400 - \$2,200 • Min. bid: \$700



Lot 182

"S T / DRAKE'S / 1860 / PLANTATION / X / BITTERS - PATENTED / 1862" (with 95% complete, original, front label; more than 80% complete back label), 1862 - 1885. Beautiful yellowish honey coloration, cabin form with 4 logs above the label panel, applied sloping collar - smooth base, ht. 10"; (just the slightest trace of minor wear at the roof edge, back label has some thin spots, otherwise pristine perfect). R/H #D110. A very pretty example, nice light color, scarce with labels.

Est.: \$300 - \$500 • Min. bid: \$150



Lot 183

"S T / DRAKE'S / 1860 / PLANTATION / X / BITTERS - PATENTED / 1862" (with 99% complete, original, front and back labels), 1862 - 1885. Medium-to-deep amber with a slight orange tone, cabin form with 4 logs above the label panel, applied sloping collar - smooth base, ht. 10 3/8"; (bottle is perfect, label has some very minor stain, otherwise excellent). R/H #D110. A great example, scarce with virtually complete, original labels.

Est.: \$250 - \$450 • Min. bid: \$130



Lot 184

"AMERICAN LIFE / BITTERS - P. EILER / MANUFACTURER / TIFFIN, OHIO - AMERICAN LIFE / BITTERS", probably 1865 - 1869. Golden amber, rectangular log cabin form with curved shoulders, applied sloping collar - smooth base, ht. 8 3/4"; (an open bubble on the reverse, approx. 1/2" x 1 1/4", with some depth, and a 3/8" professional repair to one of the corner logs on the reverse). R/H #A49. A rare and desirable top Ohio bitters.

Est.: \$800 - \$1,200 • Min. bid: \$400



Lot 185

“HOLTZERMANN’S – PATENT / STOMACH / BITTERS”, 1865 – 1875. Golden amber with a slight orange tone through the neck, shading to a yellowish honey coloration along the edges, rectangular cabin form, applied sloping collar – smooth base, ht. 9 3/8”, near mint; (some light interior content residue through the shoulders and in the base, most of which would likely wash out, otherwise perfect). R/H #H155. A nice lighter example, recently discovered at a garage sale in Clio, MI.

Est.: \$1,200 - \$1,800 • Min. bid: \$600



Lot 189

“PROF. LEONNARD’S – CELEBRATED / NECTAR BITTERS – HUBBELL. SWASEY & Co / SOLE AGENTS / CINCINNATI. O”, probably 1866 – 1867. Medium-to-deep amber, square with beveled corners, applied sloping collar – smooth base, ht. 9 1/4”, near mint; (just a bit of scattered light wear, and a couple of very minor, small patches of interior milkiness, otherwise perfect). R/H #L75. An exceedingly rare ‘square’ from Cincinnati, believed to be in business for only two short years.

Est.: \$400 - \$800 • Min. bid: \$200



Lot 186

Rare, sample size, **“MORNING (STAR) BITTERS” / “INCEPTUM 5869 – PATENTED / 5869”**, 1885 – 1895. Beautiful light honey amber, triangular pyramid form, tooled sloping collar – smooth base, ht. 5”; (just a bit of very faint haziness on the neck, and a couple of minor patches of very light interior haze, a tiny pinprick speck of roughness on the edge of the lip, otherwise virtually perfect). R/H #M136. Extremely rare! Believed to be one of only four, or possibly five, extant.

Est.: \$1,200 - \$2,400 • Min. bid: \$600



Lot 190

(Image of three gamecock birds) / **“DR. MICHAEL COX’S BITTERS”** (with original contents, cork and embossed neck foil), a Pittsburgh glasshouse, 1885 – 1895. Bright golden amber, square with beveled corners, tooled sloping collar – **“H. OBERNAUER & CO. / PITTSBURG”** (on smooth base), ht. 10 1/8”, virtually attic mint; (a little light wear on the two side panels, otherwise pristine). R/H #C242. An extremely rare Western PA bitters recently discovered in an attic 17 miles south of Pittsburgh.

Est.: \$1,000 - \$1,500 • Min. bid: \$500



Lot 187

“SUFFOLK BITTERS – PHILBROOK & TUCKER / BOSTON”, America, 1870 – 1880. Beautiful light yellow in the hind legs, shading to a rich deep honey coloration through the shoulders and head, figural

pig, applied double ring collar – smooth base, length 10 1/8”; (a little high point wear on the sides, and some on the pig’s cheek, as is typical for this mold, otherwise very near mint). R/H #S217. A very pretty, lighter example. Provenance: Fred Swiechowicz collection.

Est.: \$600 - \$900 • Min. bid: \$300



Lot 191

“DR WASHINGTON’S / AMERICAN / LIFE BITTERS”, 1885 – 1895. Rich medium amber with a very slight orange tone, square with rounded corners, eight flat panels around base of neck, tooled sloping collar – smooth base, ht. 9 1/8”; (the perimeter of the tooled mouth appears to have been polished, as well as possibly a bit on the top of the lip, otherwise excellent). R/H #W53. Extremely rare! Provenance: Ex. Carlynn Ring collection.

Est.: \$400 - \$600 • Min. bid: \$200



Lot 188

“BERKSHIRE. BITTERS – AMANN & Co / CINCINNATI. O”, 1873 – 1880. Medium amber in the body shading to a very deep, dense amber in the head and shoulders, figural pig, applied short tapered collar

– smooth base, length 9 1/2”, girth 11 1/4”; (some typical, relatively minor wear, primarily on the pig’s left side; a pinhead flake on the edge of the collar, and some minor light interior residue, otherwise excellent). R/H #B81.2 (short fat variant). A scarce mold, strong embossing.

Est.: \$1,200 - \$1,800 • Min. bid: \$600



Lot 192

“DR J. HOSTETTER’S / STOMACH BITTERS”, 1860 – 1870. Deep yellowish olive amber, square with beveled corners, applied sloping collar – smooth base, ht. 9 3/8”, base dia. 3”, virtually attic mint; (a few scattered, tiny, pinhead open bubbles). R/H #H194. A great example, fantastic condition with very crude, syrupy glass filled with tiny bubbles. In addition, some beautiful, almost olive yellow tones below the shoulders.

Est.: \$400 - \$600 • Min. bid: \$200



Lot 193

“**SWISS / STOMACH BITTERS – ARNOLD KOCH / BIRMINGHAM. PA**”, 1865 – 1872. Dense old amber, almost a very deep chocolate coloration, rectangular with ‘accordion’ or “V”-shaped side panels, applied sloping collar – smooth base, ht. 9 3/8”; (professionally cleaned to original luster and near mint condition). R/H #S242. In 1872, Birmingham, PA was incorporated into Pittsburgh and ceased to exist. A very scarce, uniquely shaped bitters.

Est.: \$250 - \$400 • Min. bid: \$130



Lot 194

“**DR FLINT'S – QUAKER BITTERS – PROVIDENCE. R.I.**” (with complete, original labels, 60% original wrapper!), 1875 – 1885. Aquamarine, rectangular, beveled corners, tooled, likely applied square collar – smooth base, ht. 9 3/8”; (bottle is perfect; original label and wrapper darkened a bit from age). R/H #F58. Believed to be the earliest of the three Quaker Bitters molds. Rare with original labels, extremely rare with original wrapper (the only one that we can recall seeing).

Est.: \$1,500 - \$2,500 • Min. bid: \$750



Lot 195

(Label-only), **HOPS / AND / CELERY / BITTERS. – IN MEDICINE / QUALITY Is of the first / IMPORTANCE. / Only Pure Drugs / Dispensed. / F.F. Ingram & Co. / Mfg. Pharmacists / Detroit, Mich.** (with original box, front and back labels, and 85% multi-color box wrapper), 1895 – 1910. Amber, rectangular, beveled corners, tooled sloping collar with ring – smooth base, ht. 9 3/4”; (bottle and labels near perfect; box missing top and bottom flaps). Extremely rare. R/H #H185.

Est.: \$200 - \$400 • Min. bid: \$100



Lot 196

“**KIMBALL'S / JAUNDICE - BITTERS - TROY. N.H.**”, a Stoddard, NH glasshouse, 1850 - 1860. Light-to-medium yellowish olive amber, rectangular with beveled corners, applied sloping collar – iron pontil scar, ht. 7”; (a bit of minor wear on the side, just above the base, a small spot of roughness on the inner edge of the lip that you can feel, but is not easy to see, and a 1/2” pontil chip extends to the edge of the base, but cannot be seen on display). R/H #K42. A very attractive example.

Est.: \$600 - \$900 • Min. bid: \$300



Lot 197

“**JOHN / MOFFAT – NEW YORK – PHOENIX / BITTERS – PRICE \$2,00**”, a New England glasshouse, 1840 – 1850. Clear, medium olive green, rectangular with beveled corners, applied sloping collar – sand type pontil scar, ht. 7 1/8”, attic mint; (only the slightest trace of faint wear, otherwise pristine). R/H #M108. An outstanding example, beautiful color, strong embossing, excellent character and condition. A very recent discovery from an 1840s house renovation in Kingston, NY.

Est.: \$2,000 - \$4,000 • Min. bid: \$1,000



Lot 198

“**T. J. LUMMUS' / A. V. BITTERS – LYNN – MASS.**”, 1850 – 1860. Bright aquamarine, rectangular with wide beveled corners, applied short tapered collar – blowpipe pontil scar, ht. 7 3/8”, attic mint. R/H #L133; Odell, p.232. Extremely rare. A clean, bright, heavily whittled, sparkling example, virtually pristine condition! Thomas J. Lummus ran an early apothecary and general store where they sold drugs and medicines. An exceedingly rare bitters from Massachusetts.

Est.: \$2,500 - \$3,500 • Min. bid: \$1,300



Lot 199

“**OLD DR / J. TOWNSENDS – SARSA-PARILLA – NEW YORK**”, 1850 – 1860. Brilliant medium cornflower blue shading to a deep cornflower, almost sapphire coloration near the base, square, beveled corners, applied sloping collar – heavy iron pontil scar, ht. 9 1/2”, near mint; (lightly cleaned to original luster; a couple of minor scratches on side panel, and a 1/8” iridescent bruise on the edge of the lip, otherwise perfect). Gorgeous, very scarce-to-rare color. Fred Swiechowicz collection.

Est.: \$1,000 - \$2,000 • Min. bid: \$500



Lot 200

“**OLD DR / J. TOWNSENDS – SARSA-PARILLA – NEW YORK**”, 1850 – 1860. Medium-to-deep ‘old’ amber, square with beveled corners, applied sloping collar – iron pontil scar, ht. 9 1/2”; (professionally cleaned to original luster; a little scattered wear and minor scuff marks remain, and a bit of faint dullness around some of the letters near the base, but no other form of damage and otherwise excellent). An extremely rare color for this mold, crisp embossing, outstanding character!

Est.: \$1,200 - \$2,400 • Min. bid: \$600

**Lot 201**

“DR TOWNSEND’S – SARSAPARILLA – ALBANY / N.Y.”, 1845 – 1855. Clear, medium blue green, square, beveled corners, applied sloping collar – deep domed base with large blowpipe pontil scar, ht. 9 ¼”, sparkling attic mint; (some very light, almost certainly washable, interior residue along one corner panel). A great example, almost no wear, strong embossing, outstanding clarity from the shoulders to the base, and very scarce with an ‘open pontil’. Fred Swiechowicz collection.

Est.: \$400 - \$800 • Min. bid: \$200

**Lot 205**

“DR TOWNSENDS – SARSAPARILLA – ALBANY / N. Y.”, 1850 – 1860. Brilliant, deep, yellowish emerald coloration, square with beveled corners, short neck with applied sloping collar – ‘cloverleaf’ iron pontil scar, ht. 9”, virtually attic mint; (just a slight trace of very minor wear, otherwise perfect). An absolutely spectacular example in terms of color, character, and condition. The unusually short neck and very bold embossing add another dimension to this incredible example.

Est.: \$3,000 - \$5,000 • Min. bid: \$1,500

**Lot 202**

“DR. TOWNSEND’S – SARSAPARILLA – ALBANY / N Y”, 1850 – 1860. Beautiful medium green, almost a teal coloration, square, beveled corners, applied sloping collar – large, heavy iron pontil, ht. 9 ¼”, near mint; (just a bit of minor wear including a shallow, less-than 1/8” flake by the “D”, in “TOWNSEND’S”; a film of light, almost certainly washable, interior residue, otherwise perfect). Outstanding character, very crude, wavy glass, scarce mold. Fred Swiechowicz collection.

Est.: \$400 - \$800 • Min. bid: \$200

**Lot 206**

“DR TOWNSENDS – SARSAPARILLA – ALBANY / N.Y. – III”, New England, or possibly a New York State glasshouse, 1845 – 1855. Yellowish olive amber below the shoulders, shading to a deep olive amber towards the base, square with beveled corners, short tapered collar – deep domed base with iron pontil scar, ht. 9”, attic mint. A very rare mold with the three slash marks on the 4th panel, and outstanding character having very crude, ‘syrupy’ glass. Fred Swiechowicz collection.

Est.: \$800 - \$1,200 • Min. bid: \$400

**Lot 203**

“DR TOWNSEND’S – SARSAPARILLA – ALBANY / N. Y. No 1”, 1855 – 1865. Bright yellowish grass green, square with beveled corners, applied sloping collar – early smooth base, ht. 9 ¼”, attic mint. Note the scarce “No 1” mold variant, and in a very rare color for this mold! The great majority of “No 1” Townsend’s are in shades of olive green. This one just missed the pontil rod, strong embossing, outstanding condition. Provenance: Fred Swiechowicz collection.

Est.: \$400 - \$800 • Min. bid: \$200

**Lot 207**

“DR. GUYSOTT’S – COMPOUND EXTRACT / OF YELLOW DOCK – & SARSAPARILLA”, 1855 – 1865. Rich, medium-to-deep bluish emerald coloration, square with beveled corners, crudely applied large ‘donut-style’ collar – smooth base, ht. 9 ½”, perfect. A fantastic example, outstanding eye-appeal, heavily whittled, wavy, glass, and in a deep – very strong color with a large ‘donut-style’ collar. Originally discovered in a basement in Connecticut.

Est.: \$5,000 - \$8,000 • Min. bid: \$2,500

**Lot 204**

“DR TOWNSEND’S – SARSAPARILLA – ALBANY / N. Y.”, 1850 – 1860. Brilliant yellow green with an olive tone, square, beveled corners, applied sloping collar – iron pontil scar, ht. 9 ¼”, near mint; (a slight trace of very light wear, and a tiny pinhead speck of roughness on the edge of the lip, otherwise perfect). A rich, deep, very scarce-to-rare, eye-appealing color – fantastic condition. A 3/16” bead of glass is on one of the beveled corners. Fred Swiechowicz collection.

Est.: \$600 - \$900 • Min. bid: \$300

**Lot 208**

“OLDS – ERYSIPELAS – SYRUP”, probably New England, 1845 – 1860. Deep olive green, square, beveled corners, applied sloping collar – iron pontil scar, ht. 9 ¾”; (a crack, approximately 3 ½”, extends from the pontil to the beveled base edge and loops back around; a fair amount of fine high point wear on a couple of the side panels, and some in-manufacture crazing lines and minor roughness on the inside edge of the lip). A very crude, exceedingly rare pontiled medicine. Gary Enters collection.

Est.: \$800 - \$1,200 • Min. bid: \$400



Lot 209

“WYNKOOP’S / SARSAPARILLA / FOR THE / BLOOD / ½ GALLON NEW YORK”, 1845 – 1855. Medium-to-deep sapphire blue, rectangular ‘tombstone’ form with beveled corners, applied double collar – blowpipe pontil scar, ht. 12 7/8”; (a large crack travels from below the neck, down the back corner, across the side panel, around the edge of the base, and halfway up the other side panel; a 5/8” base chip, some dullness on the back and side panels, minor interior residue).

Est.: \$1,000 - \$2,000 • Min. bid: \$500



Lot 210

“WYNKOOP & Co’s / TONIC MIXTURE / NEW YORK. – WARRANTED TO CURE – FEVER & AGUE”, 1845 - 1855. Beautiful sapphire blue, rectangular, beveled corners, applied sloping collar - blowpipe pontil scar, ht. 6 ¼”; (professionally cleaned to original luster; a bit of scattered light wear, and an area on the back label panel, below the shoulder, with some fairly heavy wear, but not distracting or apparent on display, otherwise excellent). A beautiful, bright, clean example.

Est.: \$2,000 - \$3,000 • Min. bid: \$1,000



Lot 211

“DR. J.S. WOOD’S / ELIXIR / ALBANY / NY”, probably Albany Glass Works, 1847 – 1849. Rich, medium-to-deep bluish emerald, rectangular tombstone form with concave corners, applied sloping collar – iron pontil scar, ht. 8 5/8”, virtually perfect; (just a slight trace of very light wear, otherwise pristine). Strong color, deeper in tone than most, heavily whittled, outstanding condition! A premier example, one of the choicest that you could hope to find. Fred Swiechowicz collection.

Est.: \$4,000 - \$8,000 • Min. bid: \$2,000



Lot 212

“LILLY SYRUP. – J. FISH / ROCHESTER. N.Y. – LILLY SYRUP.”, Mt. Vernon Glass Works, Vernon, NY, probably 1841 – 1843. Beautiful light yellowish olive, almost an olive yellow coloration, rectangular with beveled corners, applied sloping collar – blowpipe pontil scar, ht. 5 ¾”, attic mint. Odell, p.128. Extremely rare! Believed to be one of only three, or possibly four known. A very pretty example, beautiful color, outstanding character and condition. Fred Swiechowicz collection.

Est.: \$8,000 - \$12,000 • Min. bid: \$4,000



Lot 213

“ICELAND BALSAM – FOR PULMONARY / COMSUMPTION – ICELAND BALSAM”, Mt. Vernon Glass Works, Vernon, NY, 1840 – 1846. Beautiful light yellowish olive below the shoulders, shading to a deep yellow olive near the base, applied sloping collar – blowpipe pontil scar, ht. 6 ½”; (lightly cleaned to original luster, some light ground wear and swirl lines remain, primarily on the reverse, otherwise excellent). An exceedingly rare Mt. Vernon medicine. Fred Swiechowicz collection.

Est.: \$5,000 - \$10,000 • Min. bid: \$2,500



Lot 214

Early Medicine or Utility Bottle, New England, 1840 – 1855. Medium-to-deep olive amber, rectangular with beveled corners, applied sloping collar with bevel – sand type pontil scar, ht. 6 ¾”, virtually attic mint; (slight trace of typical light wear, and a couple of pinhead open surface bubbles, otherwise perfect). A great looking early medicine, pleasing form with an unusually long neck, nice ‘seedy’ glass. Provenance: Fred Swiechowicz collection; Ex. Charles Gardner collection.

Est.: \$300 - \$500 • Min. bid: \$150



Lot 215

Rare, Unusual Medicine or Utility Bottle, 1840 – 1855. Bright golden amber, octagonal, short tapered collar with lower bevel – blowpipe pontil scar, ht. 6 ¼”; (some scattered exterior wear and light scratches; a little patchy, very light dullness, mentioned for completeness, but not terribly distracting, and a few paper-thin open surface bubbles). Beautiful color, outstanding character, very heavily whittled, extremely rare mold. Provenance: Fred Swiechowicz collection.

Est.: \$800 - \$1,600 • Min. bid: \$400



Lot 216

“HOWARDs / VEGETABLE – CANCER. AND / CANKER. SYRUP”, New England, a Stoddard, NH glasshouse, 1855 - 1865. Medium-to-deep ‘old amber’, rectangular with wide beveled corners, large applied square collar - smooth base, ht. 7 ¼”, attic mint! An outstanding example of this very scarce and desirable early Stoddard medicine, fantastic condition – almost no wear, nice crude glass, and crisp strong embossing. Provenance: Ex. Joe Widman collection.

Est.: \$1,800 - \$3,600 • Min. bid: \$900



Lot 217

"SKERRETT'S OIL / B. WHEELER / W. HENRIETTA / MON. CO. N.Y.", probably Lockport Glass Works, Lockport, NY, 1855 – 1865. Rich, medium-to-deep bluish emerald or "Lockport green", cylindrical, applied sloping collar – early smooth base, ht. 7 1/8", virtually perfect; (a tiny, pinprick speck of roughness on the back edge of the collar, otherwise pristine). Very scarce-to-rare larger size, crisp, extremely bold embossing – a top shelf example! Fred Swiechowicz collection.

Est.: \$1,500 - \$2,500 • Min. bid: \$750



Lot 221

"MACKENZIE'S / FEBRIFUGE" (with original pill box insert), 1845 - 1855. Aquamarine, rectangular with beveled corner, applied sloping collar - blowpipe pontil scar, ht. 6 1/4", bottle is perfect! (original pill box, *MACKENZIE'S COMPOUND LIVER PILLS*, is darkened from age and has some wear around the edges, otherwise excellent). Odell, p.235. An extremely rare Ohio pontiled medicine, believed to be one of three known examples. Provenance: Ex. James Chebalo, Sam Green collections.

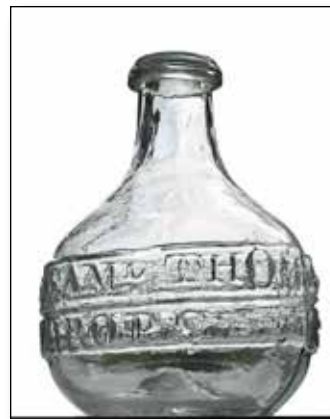
Est.: \$3,000 - \$4,000 • Min. bid: \$1,500



Lot 218

"LONGLEY'S - PANACEA", a New England, or possibly New York State glasshouse, 1848 – 1860. Medium-to-deep olive green, rectangular with beveled corners, crudely applied short tapered collar with lower bevel – early smooth base, ht. 6"; (only the slightest trace of faint wear, otherwise attic mint). Odell, p.228. A very crude example, nice deep color, excellent character, the glass being filled with tiny bubbles. Provenance: Fred Swiechowicz collection.

Est.: \$700 - \$900 • Min. bid: \$350



Lot 222

"DR SAML. THOMSONS PATENT - RHEUMATIC DROPS", probably 1820 – 1830. Colorless, compressed bulbous body, sheared mouth with crudely applied narrow band collar – blowpipe pontil scar, ht. 3 1/4", perfect. Per Odell, Dr. Samuel Thomson was from Surrey, NH; the medicine was patented March 2, 1813. Extremely rare, believed to be one of only perhaps 3 - 4 known in any condition. A very early, eye-appealing pontiled medicine, strong, crisp embossing, outstanding condition.

Est.: \$1,200 - \$1,800 • Min. bid: \$600



Lot 219

"ROHRER'S - EXPECTORAL / WILD / CHERRY / TONIC - LANCASTER PA", 1855 - 1865. Medium amber, rectangular pyramid form with roped corners, applied sloping collar with ring – iron pontil scar, ht. 10 5/8", attic mint! Odell, p.301. A great example of this distinctive, very attractive, roped corner early medicine. Fantastic condition, and nice with the iron pontil scar. Many, if not most, are smooth base.

Est.: \$300 - \$500 • Min. bid: \$150



Lot 223

"CHURCHS - COUGH DROPS - SHAW & Co. - 66 ST. PAUL S", America or possibly England, 1820 – 1840. Colorless flint glass, square, rounded corners, sheared, tooled, thin flared mouth – glass-tipped pontil scar, ht. 4 1/8"; (professionally cleaned to original luster and near mint condition; some very light matte-type texture to the glass). Knapp, p.87; Odell, p.75. A very early, extremely rare pontiled medicine dug in downtown Philadelphia.

Est.: \$400 - \$800 • Min. bid: \$200



Lot 220

"GENUINE - SANDS' / SARSAPARILLA - NEW YORK.", 1850 – 1860. Aquamarine with some attractive, faint, olive yellow tones through the neck, rectangular with beveled corners, applied double ring collar – blowpipe pontil scar, ht. 10 1/8", perfect. DeG #188; Odell, p.310. A bright, clean, sparkling example, beautifully whittled. A big, impressive sarsaparilla, and a lot of bottle for the money!

Est.: \$250 - \$450 • Min. bid: \$130



Lot 224

"ANDERSONS / COUGH DROPS - D.E. SMITHS / PATENT", America, 1825 – 1840. Aquamarine, cylindrical, sheared, tooled, thin flared mouth – blowpipe pontil scar, ht. 3 1/2", near mint; (lightly cleaned to original luster). Odell, p.7. A very rare, early, pontiled medicine (most have "Prepared by I Mellon", or "J Miller", this is the "D.E. Smith" variant). Dug in an early privy, downtown Philadelphia. A beautiful example, bright, clean, strong embossing, outstanding condition.

Est.: \$200 - \$400 • Min. bid: \$100



Lot 225

“**SHERMAN'S / LOZENGES**”, 1840 – 1850. Aquamarine, oval, expanded wide neck, sheared, tooled, and inward rolled mouth – blowpipe pontil scar, ht. 2 7/8”, perfect. Odell, p.319. Rare. An unusual and attractive little medicine with an uncharacteristically wide neck. Provenance: James Chebalo collection.

Est.: \$150 - \$250 • Min. bid: \$80



Lot 229

“**PROF. GREEN'S – FEVER & AGUE – CONQUERER – R. W.**”, 1845 – 1860. Aquamarine, rectangular with narrow beveled corners, applied sloping collar – blowpipe pontil scar, ht. 6 1/8”; (professionally cleaned to original luster with just a couple of spots of minor light wear remaining, otherwise excellent). Odell, p.152. An extremely rare pontiled medicine – perhaps the only example, or one of two, to be offered at auction in more than 30 years. Provenance: Gary Enters collection.

Est.: \$300 - \$500 • Min. bid: \$150



Lot 226

“**MUSTIN. / 1810. – HEALING / OIL.**”, America, 1830 – 1850. Aquamarine, square, narrow beveled corners, sheared, tooled, and inward rolled mouth – blowpipe pontil scar, ht. 3 1/2”, near mint; (lightly cleaned to original luster and virtually perfect condition). An exceedingly rare, possibly unique medicine. We can find no auction record or reference for this bottle (Nielsen; Odell, or Knapp). Clean, sparkling, near ‘attic’ condition. Discovered in a downtown Philadelphia privy dig.

Est.: \$400 - \$800 • Min. bid: \$200



Lot 230

(Label-only), **DR. BARRON'S / MAGNETIC / PAIN DESTROYER, / Manufactured from the Original Recipe, by / JOHN MOORE, Sole Proprietor, / WARREN, MASS. / Price, 25 Cents.**, 1849 – 1855. Aquamarine, 12-sided, thin flanged lip – blowpipe pontil scar, ht. 4 1/8”; (a 1/2” piece of the flanged lip is missing, otherwise perfect). Extremely rare! The medicine was manufactured and sold by John Moore in his country store, c. 1850. Ron Rainka collection.

Est.: \$200 - \$400 • Min. bid: \$100



Lot 227

“**DURNO'S / THE / MOUNTAIN / INDIAN / LINIMENT**”, probably 1853 – 1859. Aquamarine, cylindrical, sheared, tooled, and inward rolled mouth – blowpipe pontil scar, ht. 5 1/4”, perfect. Odell, p.116. An extremely rare, pontiled Indian medicine from Albany, NY, and only the 3rd example to be offered at auction in more than 30 years. We sold the last example more than five years ago. Very strong embossing, beautiful condition. Provenance: Ex. James Chebalo collection.

Est.: \$1,000 - \$1,500 • Min. bid: \$500



Lot 231

“**J. WINER & Co – THE ARCANUM / EXTRACT – NEW YORK**”, 1845 – 1860. Aquamarine, rectangular, beveled corners, applied square collar – blowpipe pontil scar, ht. 5 1/2”, perfect. Odell, p.376. Extremely rare! Believed to be one of only two offered at auction in more than 30 years. A sparkling, pristine example. The word “arcanum” is defined as a secret, or mystery. Extrapolating the definition as it relates to the bottle, it infers a ‘mystery extract’. Gary Enters collection, Ex. Sam Greer collection.

Est.: \$400 - \$600 • Min. bid: \$200



Lot 228

“**INDIAN / CLEMENS**” (Standing Indian) “**TONIC / PREPARED BY / GEO. W. HOUSE**” (with 98% complete, original label, cork and sealing wax), 1845 - 1855. Aquamarine, oval, sheared and outward folded mouth – blowpipe pontil scar, ht. 5 5/8”; (bottle is perfect, label darkened a bit from age, otherwise excellent). Odell, pgs. 79-80. A great looking pictorial pontiled medicine with embossed full-length standing Indian. Provenance: Gary Enters collection.

Est.: \$400 - \$600 • Min. bid: \$200



Lot 232

“**BROWN'S / ANTI SPASSIS**”, 1850 – 1860. Aquamarine, rectangular with beveled corners, applied ring collar with bevel – blowpipe pontil scar, ht. 5 1/2”, perfect. Extremely rare! We could find no record of this in the auction reports, nor in Odell, or Knapp. Also, it is interesting, the meaning of “Anti Spassis” defies definition. Regardless, a very unusual and attractive pontiled medicine with the scalloped corner panels, strong embossing and crude glass. Provenance: Gary Enters collection.

Est.: \$400 - \$600 • Min. bid: \$200



Lot 233

“CIRCASSIAN / LYMPH – T & S” Medicine Bottle, 1845 – 1855.

Aquamarine, rectangular ‘footed’ base with octagonal mid-section, paneled shoulders and sides, bulbous ring neck, sheared mouth – blowpipe pontil scar, ht. 6 ¾”, very near mint; (an ‘attic-type’ bottle with some very faint interior residue or milkiness mentioned for completeness, otherwise perfect). Odell, p.76. A very rare Boston medicine, unusual and distinctive mold, whittled, fantastic condition!

Est.: \$600 - \$900 • Min. bid: \$300



Lot 234

“J.R. ROWAND – PHILADA” (with 95% complete, original label), 1840 – 1850. Aquamarine, hexagonal, sheared, and inward rolled mouth – blowpipe pontil scar, ht. 4”; (some light interior content residue, otherwise perfect). Odell, p.304. Scarce, especially with original label which reads in part, *Dr. ROWAND’S / COMPOUND SYRUP OF / BLACKBERRY ROOT / An Infallible Remedy for / Diarrhoea, Cholera, Morbus, / Cramp, Colic, &c.*

Est.: \$200 - \$400 • Min. bid: \$100



Lot 235

“ROWAND & / WALTON’S – PANACEA – PHILAD.A”, probably 1845 – 1850. Aquamarine, rectangular, narrow beveled corners, applied sloping collar – blowpipe pontil scar, ht. 6 1/8”; (professionally cleaned to original luster with a little scattered light wear remaining; a 3/8” area of roughness, including a couple of minor flakes, on the inside edge of the lip, some of which is possibly in-making, and a ¼” open bubble at edge of base). An extremely rare medicine.

Est.: \$300 - \$500 • Min. bid: \$150



Lot 236

“DOCTOR. I.T. / HERDERSON’S – EUREKA / TONIC”, 1845 – 1860. Aquamarine, rectangular with beveled corners, applied short tapered collar – blowpipe pontil scar, ht. 6 ¼”; (professionally cleaned to original luster with just a bit of scattered light wear remaining, otherwise near mint). Odell, p.170. A great looking pontiled medicine, very rare! Per Odell, the bottle may be from Farmerville, LA. Provenance: Gary Enters collection

Est.: \$300 - \$500 • Min. bid: \$150



Lot 237

“COWAN’S / LITHONTRIPTIC”, 1850 – 1860. Aquamarine, rectangular with beveled corners, applied sloping collar – blowpipe pontil scar, ht. 7 ½”; (lightly cleaned to original luster; just a trace of minor wear on the reverse, and some very faint haziness on the interior of the shoulder, otherwise excellent). Extremely rare! This is the same example that sold in June, 2018, and the only example to be offered at auction in 40 years of auction records. Provenance: Gary Enters collection.

Est.: \$400 - \$600 • Min. bid: \$200



Lot 238

“DR. R. GOODALE’S – AMERICAN – CATARRH / REMEDY”, probably 1855 – 1862. Aquamarine, rectangular with beveled corners, applied sloping collar – blowpipe pontil scar, ht. 5 7/8”, attic mint. Odell, p.147. Extremely rare! An old Harmer Rooke Galleries tag remains on the base. This is the same example that sold in 1990 through HR, and the only example noted in the auction records. Provenance: Gary Enters collection.

Est.: \$400 - \$600 • Min. bid: \$200



Lot 239

“DR. G.W. PHILLIPS – COUGH / SYRUP – CINCINNATI. O”, probably 1855 – 1859. Bright bluish aquamarine, rectangular with two rounded corners, and two narrow beveled corners, applied round collar with bevel – large iron pontil scar, ht. 7 3/8”, attic mint! Odell, p.279. A rare Cincinnati pontiled medicine, unusual mold with the embossing reading from the base to the shoulders. From the same company that put out the Diarrhea Syrup and Rheumatic Liniment.

Est.: \$400 - \$600 • Min. bid: \$200



Lot 240

“DR. H. AUSTIN’S – GENUINE / AGUE BALSAM – PLYMOUTH, O”, 1850 – 1860. Bright aquamarine, rectangular with beveled corners, applied sloping collar – iron pontil scar, ht. 7 ¼”, near mint; (just a bit of minor light wear around the back shoulder panel, and a small, partially open interior bubble in the back shoulder mentioned for completeness, otherwise virtually attic mint). Odell, p.13. A very attractive, rare, Ohio medicine. Provenance: Gary Enters collection.

Est.: \$250 - \$450 • Min. bid: \$130



Lot 241

“PREPARED BY – E. FURMAN / MANVILL – WEST TROY N.Y.”, 1850 – 1860. Aquamarine, rectangular with beveled corners, applied sloping collar – blowpipe pontil scar, ht. 7 5/8”, attic mint! A boldly embossed, bright, clean, sparkling, very rare pontiled medicine. Believed to be one of only two examples offered at auction in more than 20 years. The small village of West Troy became the city of Watervliet, NY in 1896. Provenance: Gary Enters collection.

Est.: \$300 - \$500 • Min. bid: \$150



Lot 242

“HYATT'S – INFALLIBLE – LIFE BALSAM / N.Y.”, 1870 - 1880. Deep apple, or ‘clear green’, rectangular with beveled corners, applied sloping collar with lower bevel – smooth base, ht. 9 3/8”, near perfect; (just a slight trace of light interior milkiness in the back shoulder corner, otherwise virtually pristine condition). It's not easy to find them this nice! A beautiful, ‘attic-type’ example in an attractive, and very scarce color.

Est.: \$300 - \$500 • Min. bid: \$150



Lot 243

“HYATT'S – INFALLIBLE – LIFE BALSAM / N - Y.”, 1865 – 1875. Deep blue green coloration, rectangular with beveled corners, applied sloping collar with ring – smooth base with recessed oval and two rivet, or nail-head marks, ht. 9 5/8”; (professionally cleaned to original luster with just a bit of scattered minor wear remaining, and a couple of pinhead open surface bubbles, otherwise excellent). One of the earlier molds, strong color, deeper than most, another very nice Hyatt's!

Est.: \$400 - \$600 • Min. bid: \$200



Lot 244

“HYATT'S – AB / DOUBLE STRENGTH – LIFE BALSAM / N - Y.”, 1865 – 1875. Yellowish olive amber, rectangular with beveled corners, applied sloping collar with ring – smooth base, ht. 9 1/2”; (lightly cleaned to original luster and near mint condition; a couple of spots of very minor wear, otherwise excellent). An exceedingly rare and beautiful color, possibly one of only two intact examples known in olive amber. In addition, the glass is absolutely filled with tiny bubbles.

Est.: \$800 - \$1,200 • Min. bid: \$400



Lot 245

“DR TEBBETTS’ – PHYSIOLOGICAL / HAIR – REGENERATOR”, 1865 - 1875. Medium pinkish strawberry below the shoulders shading to a deep strawberry puce towards the base, rectangular, beveled corners, applied double ring collar – smooth base, ht. 7 1/2”; (professionally cleaned to original luster with a touch of minor wear remaining, and a little light patchy interior haziness, otherwise excellent). A very pretty example, nice and light through the upper half. John Wilson collection.

Est.: \$300 - \$500 • Min. bid: \$150



Lot 246

“DR TEBBETTS’ – PHYSIOLOGICAL / HAIR – REGENERATOR”, 1865 - 1875. Deep strawberry puce with some light pinkish tones along the edges, rectangular with beveled corners, applied double ring collar – smooth base, ht. 7 3/8”; (professionally cleaned with a little scattered light wear remaining). The color is deep, but light enough to still be enjoyed with normal lighting. DF p.152. Provenance: John Wilson collection.

Est.: \$200 - \$400 • Min. bid: \$100



Lot 247

“MRS S.A. ALLEN'S – WORLDS HAIR / RESTORER – NEW YORK”, 1865 – 1875. Dense reddish puce, rectangular, beveled corners, applied double ring collar – smooth base, ht. 7 3/8”; (professionally cleaned to original luster; a little scattered ground wear, and a fine matte-type finish on the back label panel). Outstanding character, crude wavy glass, several potstones mixed in the batch (with no associated issues), and with an aqua shard embedded in the base edge on the reverse.

Est.: \$200 - \$400 • Min. bid: \$100



Lot 248

Lot of (2), “MRS S.A. ALLEN'S – WORLDS HAIR / RESTORER – NEW YORK.” Bottles, 1865 – 1880. Bright honey amber and olive yellow, both with applied double ring collar – smooth base, ht. 7 1/8”; (1st Ex. has a tiny scrape on panel edge; a bit of faint dullness, barely noticeable, light haze in the neck, and a 1/8” open bubble near back shoulder; olive yellow example professionally cleaned with some light remaining wear, otherwise excellent). John Wilson collection.

Est.: \$150 - \$250 • Min. bid: \$80



Lot 249

“The Dickson Drug Co. / 169 & 171 MAIN ST. / NEW BRITAIN, CONN.” (with 90% complete, original label), Carr-Lowrey Glass Co., Baltimore, MD, 1890 – 1910. Bright emerald green, square with beveled corners, wide neck with tooled prescription-type collar – **“C L G CO.”** (on smooth base), ht. 5 ½”, perfect. A very scarce colored druggist, and rare with original label which reads in part, Rx / 195 / ALCOHOL 8% / A Valuable Specific / for Malaria. Ron Rainka collection.

Est.: \$100 - \$200 • Min. bid: \$50



Lot 253

Lot of (2), Mineral Water Bottles, probably New York, possibly Saratoga Mountain Glassworks, Mt. Pleasant, NY, 1856 - 1866. **“CLARKE & WHITE. / NEW YORK.”**, and: **“CLARKE & WHITE. / NEW - YORK.”**. Yellowish olive and deep olive green, both have applied sloping collars with bevel – sand type pontil scar and smooth base, Pt. & Qt; (both have a little typical scattered minor wear, otherwise near mint). T# C-10:C, Type 2, and T# C-10:A, Type 1. Both are scarce. Bruce Purdy collection.

Est.: \$100 - \$200 • Min. bid: \$50



Lot 250

Lot of (2), “Lipman Wolfe & Co. / PORTLAND, OREGON.” Druggist Bottles, Carr-Lowrey Glass Co., Baltimore, MD, probably 1900 – 1915. Both are yellowish emerald green, square with beveled corners, small tooled ring collars – **“C L G Co”** (on smooth bases), ht. 4 ¾” and 6 ¼”; (4 ¾” example has a bit of patchy light interior haziness and some minor wear, including a small scrape, along one of the back edges; 6 ¼” size is near perfect with just a slight trace of wear).

Est.: \$150 - \$250 • Min. bid: \$80



Lot 254

“SARATOGA. N.Y” Wide Mouth Salt Jar, probably a NY State glasshouse, possibly Saratoga Mountain Glassworks, Mt. Pleasant, 1855 - 1861. Medium-to-deep olive green, cylindrical, 3-pc. mold, expanded wide neck with a crudely applied, large ring-type collar – smooth base, Qt, ht. 8 ¼”, virtually perfect; (slight trace of very light wear and a few, tiny, pinhead open surface bubbles). T# E-1:B, variant 2. A great example of this rare and desirable, early salt jar, crude ‘seedy’ glass, fantastic condition.

Est.: \$1,800 - \$3,200 • Min. bid: \$900



Lot 251

“LYNCH & CLARKE / NEW YORK”, possibly New England Glass Bottle Company, Cambridge, MA, 1823 - 1833. Medium-to-deep olive amber, cylindrical, applied sloping collar with bevel – sand type pontil scar, Pt, near perfect; (just the slightest trace of very minor wear, a bit of faint interior residue, otherwise attic mint). T# C-2:B, Type 2. A fantastic example, nice color, very little wear, an ‘attic-type’ bottle. Provenance: Bruce Purdy collection

Est.: \$400 - \$600 • Min. bid: \$200



Lot 255

“ROUND LAKE / MINERAL WATER / SARATOGA Co / N.Y.”, probably Congress & Empire Spring Glass Works, 1876 – 1885. Rich orange amber with some reddish tones and deeper striations swirled through the body, applied sloping collar – smooth base, Qt, virtually perfect; (a tiny pinhead flake on edge of lower bevel). T# S-48:A. A great rarity and top mineral water, considered among the top five most desirable, outstanding condition, whittled, strong embossing. Ex. Jack Stecher collection.

Est.: \$4,000 - \$6,000 • Min. bid: \$2,000



Lot 252

“LYNCH & CLARKE / NEW YORK”, possibly New England Glass Bottle Company, Cambridge, MA, 1823 - 1833. Medium-to-deep olive green, cylindrical, applied sloping collar with bevel – sand type pontil scar, Pt, near perfect; (a couple of minor, paper-thin open surface bubbles). T# C-2:B, Type 1. A great example, fantastic character with crude, bubbly glass, and heavily whittled!

Est.: \$500 - \$700 • Min. bid: \$250



Lot 256

“CHITTENANGO – WHITE – SULPHUR / WATER”, 1869 – 1875. Beautiful, medium emerald coloration, cylindrical, applied sloping collar with bevel – smooth base, Qt, perfect! T# N-9:A. Extremely rare! A fantastic example, great color, outstanding, virtually pristine condition. These are, as they say, ‘scarce-as-hens-teeth’. It will likely be a very long time before another example is offered at auction. Provenance: Ex. Mike Brnger, Mark Yates collection.

Est.: \$3,000 - \$5,000 • Min. bid: \$1,500



Lot 257

"GLACIER SPOUTING SPRING / SARATOGA / SPRINGS. N.Y." – (Derrick with Spouting Spring), possibly Congressville Glass Works, 1871 - 1872. Aquamarine, applied double collar – smooth base, Pt, near mint; (lightly cleaned to original luster, and just a trace of minor wear including a pinhead speck of roughness on one of the derrick beams). T# S-32. A rare pictorial mineral water that was only in business for about one year. Beautiful condition, whittled, strong embossing.

Est.: \$2,500 - \$4,500 • Min. bid: \$1,300



Lot 261

"CONGRESS & EMPIRE SPRING CO / E / SARATOGA. N.Y.", 1865 – 1875. Bright golden amber with a slight orange tone through the neck, cylindrical, applied sloping collar with bevel – smooth base, Qt, attic mint. T# E-6:A (variant with period after "Saratoga"). A very pretty example, some nice large bubbles scattered around the shoulder, scarce mold. Provenance: Bruce Purdy collection.

Est.: \$200 - \$400 • Min. bid: \$100



Lot 258

"SARATOGA / A / HATHORN – CARL H. SCHULTZ / N.Y.", 1870 – 1880. Rich, medium green with a slight bluish tone, cylindrical, applied sloping collar with bevel – smooth base, Pt, near mint; (a paper-thin 1/4" open bubble above the "G" in "Saratoga", otherwise virtually perfect). T# M-45. An exceedingly rare and desirable mineral water believed to be the only example, or possibly one of two, to be offered in more than 20 years. Provenance: Ex. Mike Brnger collection.

Est.: \$2,000 - \$4,000 • Min. bid: \$1,000



Lot 262

"CONGRESS & EMPIRE SPRING CO / HOTCHKISS' SONS / C / NEW YORK / SARATOGA. N.Y.", 1866 – 1870. Beautiful, medium-to-deep yellowish olive, cylindrical, applied sloping collar with bevel – smooth base, Pt, perfect. T# C-15:B, Type 1. A very attractive example, beautiful color, with some nice larger bubbles in the reverse. A lot of bottle for the money. Provenance: Bruce Purdy collection.

Est.: \$120 - \$240 • Min. bid: \$60



Lot 259

"SARATOGA / A / SPRING Co. / N.Y.", 1866 – 1880. Rich, medium emerald coloration, cylindrical, applied sloping collar with bevel – smooth base, Qt; (the bottle may have been lightly cleaned, but certainly presents as near mint; a 3/16" open bubble near side mold seam, otherwise perfect). T# S-1:A. A scarce mold in a beautiful, very scarce-to-rare color!

Est.: \$400 - \$600 • Min. bid: \$200



Lot 263

"CONGRESS & EMPIRE SPRING CO / HOTCHKISS' SONS / C / NEW YORK / SARATOGA. N.Y. – CONGRESS / WATER", 1866 – 1870. Rich, medium-to-deep emerald coloration, cylindrical, applied sloping collar with bevel – smooth base, Pt, perfect. T# C-16:B, variant 1 (mold defect with filled "O" in "Saratoga"). A great example, deep, rich emerald color, fantastic condition. Provenance: Bruce Purdy collection.

Est.: \$120 - \$240 • Min. bid: \$60



Lot 260

"SARATOGA / VICHY / WATER / SARATOGA, N.Y. – V", probably 1884 – 1889. Bright medium amber with a slight orange tone through the neck, cylindrical, applied sloping collar with ring – smooth base, Qt, virtually attic mint; (only the slightest trace of very faint wear, otherwise perfect). T# S-60:A. Scarce. Ex. Robert Pattridge collection.

Est.: \$100 - \$200 • Min. bid: \$50



Lot 264

"FRANKLIN SPRING / MINERAL WATER / BALLSTON SPA / SARATOGA CO / N.Y.", 1868 – 1889. Rich, deep yellowish green with an olive tone, cylindrical, applied sloping collar with bevel – smooth base, Pt, near mint; (just a bit of minor wear including a small area of dullness, or light abrasion, near the side mold seam, otherwise excellent). T# S-28. An attractive bubbly example, scarce mold, scarce color.

Est.: \$175 - \$275 • Min. bid: \$90



Lot 265

“WASHINGTON SPRING CO” / (BUST OF WASHINGTON) / “BALLSTON SPA / N.Y. – C”, 1868 – 1880. Medium-to-deep emerald with a slight bluish tone, cylindrical, applied sloping collar with bevel – smooth base, Pt; (a little scattered light wear, and a ¼” chip at the edge of the base near a side mold seam, some very light interior residue). T# S-61. A scarce, classic, pictorial mineral water. Provenance: Bruce Purdy collection.

Est.: \$300 - \$500 • Min. bid: \$150



Lot 269

“MISSISQUOI / A / SPRINGS” – (Indian woman with papoose), probably Lyndeborough Glass Works, NH, 1867 – 1875. Clear, medium yellowish green, cylindrical, applied sloping collar with bevel – smooth base, Qt, near perfect; (just the slightest hint of very minor wear, and a small trace of very light interior residue or haze that may wash out). T# V-17:B. A great example, outstanding character, whittled and bubbly. Bruce Purdy collection; Ex. Edgar Hoffman collection.

Est.: \$600 - \$900 • Min. bid: \$300



Lot 266

“PAVILION & UNITED STATES SPRING Co / SARATOGA / N.Y. – PAVILION WATER / APERIENT”, 1872 – 1885. Rich, medium-to-deep emerald coloration, cylindrical, applied sloping collar with bevel – smooth base, Pt; (a couple of minor scratches and some scattered light wear, a couple of spots of light dullness to the glass). T# S-45:B. Scarce. The bottle displays well, but would likely benefit from a light professional cleaning, if desired. Bruce Purdy collection.

Est.: \$100 - \$200 • Min. bid: \$60



Lot 270

“ADIRONDACK SPRING / WESTPORT. N.Y.”, possibly Congressville Glass Works, Saratoga Springs, New York, 1868 – 1875. Rich medium emerald coloration, cylindrical, applied sloping collar with bevel – smooth base, Qt, perfect! T# N-1:A. Scarce. A great example, beautiful condition with nice whittling and character to the glass. Provenance: Bruce Purdy collection.

Est.: \$400 - \$600 • Min. bid: \$200



Lot 267

Lot of (2), “G.W. WESTON & Co / SARATOGA / N.Y.” Mineral Water Bottles, 1855 – 1865. 1st Example is a rich yellowish olive; 2nd Example is a beautiful, bubbly, emerald coloration, both are cylindrical, applied sloping collar with bevel – sand type pontil scar (1st Ex.), and smooth base, Qt, both near mint; (yellowish olive ex. has some very minor interior milkiness near the base; emerald ex. has a 3/16” chip on inside edge of lip). T# E-2:A, Type II, & E-2:A, Type III. Bruce Purdy collection.

Est.: \$200 - \$300 • Min. bid: \$100



Lot 271

“ADIRONDACK SPRING / WHITE-HALL / N.Y.”, 1871 – 1883. Medium-to-deep bluish green coloration, cylindrical, applied sloping collar with bevel – smooth base, Pt; (a little light exterior wear including a 3/16” chip on the edge of the lip at the side, and a 3/16” bit of roughness on the edge of the lower bevel on the reverse, a few very minor paper-thin open surface bubbles, otherwise excellent). T# N-2:B. Scarce. Nice deep color, strong embossing, beautifully whittled.

Est.: \$100 - \$200 • Min. bid: \$50



Lot 268

Lot of (2), “D. A. KNOWLTON / SARATOGA. / N.Y.” Mineral Water Bottles, possibly Saratoga Mountain Glass Works, Mt. Pleasant, NY, 1861 – 1863. Both are shades of medium-to-deep olive green, cylindrical, applied sloping collar with bevel – smooth base, Pt. and Qt., both virtually attic mint; (just a trace of ever-so-slight wear including a paper-thin ¼” open bubble on the Qt, otherwise both are perfect). T# E-5:A, high-shouldered Qt, and E-5:C, Pt. Bruce Purdy collection.

Est.: \$120 - \$240 • Min. bid: \$60



Lot 272

“SYRACUSE SPRINGS / D / EXCELSIOR / A.J. DELATOUR / NEW YORK”, probably 1863 – 1866. Medium amber, cylindrical, applied sloping collar with bevel – smooth base, ½ Pt, near mint; (lightly cleaned to original luster, and just a trace of minor light wear, otherwise perfect). T# N-34:C. Rare, eye-appealing, ½ pint, excellent overall condition. For history, see “Early New York Mineral Water Bottles Are Worth Their Salt”, AB&GC, March, 2014.

Est.: \$300 - \$500 • Min. bid: \$150



Lot 273

“HENRY RAWLS & Co / ALBANY”, probably Mt. Pleasant, Saratoga Mountain Glass Works, or possibly Albany Glass Works, 1848- 1860. Medium-to-deep yellowish olive amber, 3-pc. mold with a short neck, applied sloping collar with bevel – sand type pontil scar, ht. 8 ¼”; (a dug bottle with some scattered light scratches and exterior wear; a little patchy light dullness, a couple of tiny pinhead lip flakes and ¼” chip at edge of base). T# M-39. An exceedingly rare Albany bottle.

Est.: \$1,000 - \$2,000 • Min. bid: \$500



Lot 277

“HANCOCK & MELVINS’ BEER” Stoneware Bottle, America, probably 1850 – 1860. Salt glaze, cylindrical, cream color body, cobalt blue decorated cone type shoulders and large blob collar, ht. 9 ¾”, perfect. Graci, American Stoneware Bottles, p.43. A scarce, early stoneware beer, beautiful condition, believed to be from Lowell, MA. Provenance: Fred Swiechowicz collection.

Est.: \$175 - \$350 • Min. bid: \$90



Lot 274

“ARTESIAN WATER / LOUISVILLE / KY. – DUPONT”, 1855 – 1865. Deep ‘old amber’, cylindrical with 12 scalloped panels around perimeter of base, applied sloping collar – red iron pontil scar, Pt; (some scattered light wear, as well as some exterior dullness or haze, primarily on one side of the bottle – as if it were laying on it’s side; trace of interior haze). T# M-5. Scarce. The bottle would likely respond well to a light professional cleaning, the noted condition issues are relatively minor.

Est.: \$300 - \$500 • Min. bid: \$150



Lot 278

“E. McINTIRE / MINERAL WATER – PATENT”, probably 1844 – 1845. Bright yellowish green, early squat cylinder form, applied short tapered collar – blowpipe pontil scar, ht. 6 3/8”, near perfect; (just the slightest trace of very minor wear, and a shallow 1/8” flake at edge of base, otherwise virtually pristine condition). An absolutely top example of this very rare, early Boston soda – heavily whittled, great color, crisp, bold embossing, ‘attic type’ condition. Fred Swiechowicz collection.

Est.: \$2,000 - \$4,000 • Min. bid: \$1,000



Lot 275

“CLUB” (within diamond motif), Early Ale or Mineral Water Bottle, 1850 – 1860. Deep blue green, cylindrical, 3-pc. mold, applied sloping collar with ring – heavy iron pontil scar, ht. 9”; (professionally cleaned to original luster; a 3/16” shallow flake at the edge of the base may have been lightly buffed, otherwise excellent). Very rare. The last example that we can find record of at auction was April, 1996. Beautiful deep color, excellent character, heavily whittled. Bruce Purdy collection.

Est.: \$300 - \$500 • Min. bid: \$150



Lot 279

“R. C. & T. / NEW YORK – XX” Soda Water Bottle, 1845 – 1860. Beautiful, deep reddish puce coloration, cylindrical, squat soda form, applied sloping collar – iron pontil scar, ht. 7 3/8”, near mint; (professionally cleaned to original luster, otherwise virtually perfect). A scarce soda in a beautiful, very rare and eye-appealing color. Believed to be only a small handful known in this, or similar color, and one that will definitely stand out on a shelf.

Est.: \$2,000 - \$4,000 • Min. bid: \$1,000



Lot 276

“D.W. TARR & Co / BOTTLES NOT SOLD / 1853” Stoneware Bottle, America, probably 1853 – 1858. Salt glaze, cylindrical with cone type shoulders, cream color body, cobalt blue blob collar, ht. 9 3/8”, perfect. Graci, American Stoneware Bottles, p.75. A very scarce Boston stoneware ‘beer’ that likely held cider. This appears to be a variant of the example noted in the book. The company became Tarr & Smith in 1858. Provenance: Fred Swiechowicz collection.

Est.: \$200 - \$400 • Min. bid: \$100



Lot 280

“C.D. EGERT & Co / ALBANY / N.Y.” Soda Water Bottle, probably 1860 – 1862. Medium pinkish puce coloration below the shoulders, shading to a rich, deep pinkish puce towards the base, squat soda form, applied blob collar – smooth base, ht. 7”, near mint; (just a little typical light wear, and a 1/8” flake from the leg of the “R” in “EGERT”, otherwise virtually perfect). An ‘attic-type’ bottle, gorgeous color, very rare – especially in this outstanding condition. Fred Swiechowicz collection.

Est.: \$800 - \$1,200 • Min. bid: \$400

**Lot 281**

“LUKE BEARD” Mineral Water Bottle, America, probably 1847 – 1853. Medium emerald coloration, tenpin form, applied blob collar – iron pontil scar, ht. 7”; (a very slight trace of light wear, and a 5/8” chip from the heel of the base on the reverse, otherwise virtually perfect). An ‘attic-type’ example that has not been dug and cleaned. Fortunately, the noted chip is on the back of the base and does not show on display. Beautiful color, whittled, strong embossing.

Est.: \$200 - \$400 • Min. bid: \$100

**Lot 285**

“SMITH & - FOTHERINGHAM – SODA WATER – ST LOUIS – THIS BOTTLE / IS NEVER SOLD”, 1845 – 1855. Medium cobalt blue, 10-panel, applied sloping collar – iron pontil scar, ht. 7 1/4”; (professionally cleaned to original luster, some scattered light wear and minor ground imperfections, but no other form of damage). Note; there is a light coating of a lacquer type substance on the panels with painted embossing. Both the lacquer and paint would clean off, if desired. A scarce soda.

Est.: \$400 - \$600 • Min. bid: \$200

**Lot 282**

“BEACH & BALLOU / HARTFORD CT”, probably c.1861. Very deep yellowish olive, cylindrical, porter form, applied blob collar – smooth base, ht. 6 7/8”; (a little light exterior wear including a pinhead flake on the edge of the lip; a paper-thin 1/8” flake at edge of base, and an area in the back of the neck, just above the shoulder, with several 1/8” to 1/4” annealing lines, likely in-manufacture, otherwise excellent). A very scarce Hartford soda. Fred Swiechowicz collection.

Est.: \$175 - \$350 • Min. bid: \$90

**Lot 286**

“MINERAL WATER / BY / HASSINGER & O'BRIEN / 17 & O'FALLON STs / ST LOUIS”, 1850 – 1860. Bluish aquamarine, cylindrical, applied blob collar – heavy iron pontil scar, ht. 7 3/8”; (professionally cleaned to original luster, a couple of minor ground imperfections including a 1/8” bruise at edge of base near side mold seam, otherwise excellent) A good looking example, nice bright bluish color, whittled and with strong embossing.

Est.: \$175 - \$350 • Min. bid: \$80

**Lot 283**

“M.T. CRAWFORD / SPRINGFIELD. – UNION GLASS WORKS PHILA / SUPERIOR / MINERAL-WATER”, Union Glass Works, Philadelphia, PA, probably 1850 – 1857. Medium-to-deep cobalt blue, cylindrical, ‘mug-base’, applied blob collar – iron pontil scar, ht. 7 1/8”, virtually attic mint; (only the slightest trace of faint wear, otherwise perfect). A top example, un-dug, ‘attic-type’ condition, nice deep color, scarce mold.

Est.: \$600 - \$900 • Min. bid: \$300

**Lot 287**

“MINERAL WATER / BY / HASSINGER & O'BRIEN / 17 & O'FALLON STs / ST LOUIS”, 1850 – 1860. Bright yellowish apple green, cylindrical, applied blob collar – iron pontil scar, ht. 7 1/8”; (professionally cleaned to original luster; a 1/8” chip on the outside edge of the collar with an associated 1/2” bruise on the inside of the collar, and some typical scattered minor ground wear). A beautiful and very rare color for this mold, and attractive with the crudely applied crooked collar.

Est.: \$600 - \$900 • Min. bid: \$300

**Lot 284**

(STAR) / “E ROUSSEL / PHILAD.A – DYOTTVILLE GLASS WORKS / R / PHILAD.A / THIS BOTTLE / IS NEVER SOLD”, 1847 – 1850. Clear medium sapphire blue, cylindrical, applied sloping collar – iron pontil scar, ht. 7 3/8”; (professionally cleaned to original luster with just a bit of typical minor wear remaining, and a 1/4” divot, likely a tooling mark, almost certainly in-manufacture, at the heel of the base on the reverse mentioned for completeness). A bright, clean, pretty example.

Est.: \$200 - \$300 • Min. bid: \$100

**Lot 288**

“BRANDON & / FEASBY / CAMP SPRING / SODA WATER / ST LOUIS Mo”, 1855 – 1865. Rich medium green with a teal tone, squat soda form, applied blob collar – iron pontil scar, ht. 7 1/2”; (professionally cleaned to original luster with some scattered ground wear and imperfections remaining, and a little 1/8” flake on the edge of the collar, but no chips, cracks, or other form of damage). A rare mold in an exceedingly rare, outstanding color! See Johnnie Fletcher's book on MO bottles, p.286.

Est.: \$800 - \$1,600 • Min. bid: \$400



Lot 289

“C. ABEL & Co – SODA WATER – ST. LOUIS. MO”, 1845 – 1860. Beautiful, light-to-medium teal blue coloration, 12-sided, squat soda form, applied blob collar – iron pontil scar, ht. 7 ¼”; (professionally cleaned to original luster; a 1/8” flake on the back shoulder, and a little unevenness on the side of the blob collar where a flake may have been polished, but is likely in-manufacture). A very eye-appealing paneled soda, beautiful, very scarce color, boldly embossed.

Est.: \$300 - \$500 • Min. bid: \$150



Lot 293

“J. CAIRNS – KEOKUK / IOWA / F.R.L.”, 1855 – 1865. probably Frederick R. Lorenz, Pittsburgh, PA, 1855 – 1860. Aquamarine, cylindrical, pony style squat soda, applied blob collar – iron pontil scar, ht. 7 3/8”, near mint; (just a trace of light wear, otherwise virtually perfect). Scarce. A bright, clean, sparkling example.

Est.: \$120 - \$240 • Min. bid: \$60



Lot 290

“JAMES. A. LITTLE / ST LOUIS – THIS BOTTLE / IS NEVER SOLD”, probably 1848 – 1850. Medium blue green coloration, applied ring-type collar – iron pontil scar, ht. 7 3/8”; (professionally cleaned to original luster, and just a little typical minor wear, otherwise excellent). A scarce mold, nice color, beautifully whittled.

Est.: \$300 - \$500 • Min. bid: \$150



Lot 294

“COTTLE POST & CO” / (EAGLE) / “PORTLAND OGN”, probably 1877 – 1880. Rich, medium-to-deep teal coloration, cylindrical, applied blob collar – smooth base, ht. 7”, near mint; (the bottle may have been lightly cleaned, but certainly presents as virtually perfect). A beautiful pictorial soda, great color, fantastic embossed eagle (or Phoenix rising from the ashes), terrific condition.

Est.: \$300 - \$500 • Min. bid: \$150



Lot 291

“E. LESTER / ST LOUIS”, 1845 – 1860. Beautiful, light-to-medium cornflower blue, cylindrical, applied rounded blob collar – iron pontil scar, ht. 7”; (professionally cleaned to original luster with just a bit of minor light wear remaining, and a little minor roughness on the back edge of the collar, otherwise excellent). A very attractive soda – both in form, and color. The color is very rare. See Jonnie Fletcher's book on Missouri bottles, p.320, Fig. 3646.

Est.: \$800 - \$1,600 • Min. bid: \$400



Lot 295

“LEVY BROS / PORTLAND / OREGON” – “LB” (monogram), 1870 – 1880. Aquamarine, cylindrical, applied blob collar for gravitating stopper – **“GRAVITATING STOPPER / MADE BY / JOHN MATTHEWS / NEW YORK / PATD / OCT 11 / 1864”** (on smooth base), ht. 7 ¼”, near mint; (just a trace of minor wear including a few light scratches near the side mold seams, otherwise virtually attic mint). Bright, clean, strong embossing, overall beautiful condition.

Est.: \$400 - \$600 • Min. bid: \$200



Lot 292

“CAIRNS / TIMMERMANN / BLOCK & Co – ST. LOUIS SODA CO. / L&W / PITTSBURGH / PA.”, Lorenz & Wightman Glass Manufacturers, Pittsburgh, probably 1850 – 1854. Clear, light sapphire blue, cylindrical, applied blob collar – iron pontil scar, ht. 7 3/8”; (professionally cleaned to original luster, and a little typical scattered light wear including a small 1/8” flake on the shoulder). Another very pretty example, scarce color.

Est.: \$200 - \$400 • Min. bid: \$100



Lot 296

“PACIFIC & / PUGET SOUND SODA WORKS / SEATTLE / W.T.”, probably 1885 – 1889. Light apple green, cylindrical with sloping shoulders, tool “Hutchinson-style” closure – “A” (within a diamond), on smooth base, ht. 7”, near mint; (the bottle may have been very lightly cleaned, but certainly presents as near perfect). A very pretty example, nice pale green coloration, excellent condition.

Est.: \$300 - \$500 • Min. bid: \$150



Lot 297

“**BONANZA BOTTLING CO. / DAWSON, N.W.T.**”, 1895 – 1905. Aqua, cylindrical, tooled “Hutch-style” closure – smooth base, ht. 7 ¾”; (just a slight trace of minor wear, and a ¼” shallow bruise on the base ring, otherwise attic mint). Note; this is the tall, extended mold size. An original mold was altered to create this 7 ¾” size. A very scarce Northwest Territory ‘hutch’, beautiful condition. The last example recorded at auction was in 2012. A refurbished hutch-style wire is in the neck.

Est.: \$250 - \$450 • Min. bid: \$130



Lot 298

“**PRESCOTT / BOTTLING WORKS / PRESCOTT / A.T.**”, 1890 – 1905. Aquamarine, cylindrical, tooled “Hutchinson-style” closure – smooth base, ht. 6 1/8”; (just a trace of typical minor wear, otherwise very near mint). A very nice Arizona Territory hutch that does not appear to have been dug and cleaned. Overall, excellent condition.

Est.: \$200 - \$400 • Min. bid: \$100



Lot 299

“**HOME SODA WORKS / CHAS. PEVERLEY / PROP. / DOUGLAS, A.T.**”, 1895 – 1905. Aquamarine, cylindrical with 10-panel mug-base, tooled “Hutchinson-style” closure – smooth base, ht. 7”; (professionally cleaned to original luster with a little scattered ground wear and a few light scratches remaining; a shallow 1/8” flake on the side of the collar, and a couple of flakes, 1/8” to 3/16”, not terribly distracting, at corners of the mug-base). A very scarce territorial hutch.

Est.: \$250 - \$450 • Min. bid: \$130



Lot 300

Lot of (2), “KROGER BROS. / BUTTE, M.T.” Early Sodas, 1885 – 1889. Aqua and light apple green, both are cylindrical, tooled blob or “Hutchinson-style” closures – smooth base, ht. 6 ¼” and 6 3/8” respectively; (the aqua example is near mint with just a bit of typical light usage wear and retains a period wire closure in the neck; apple green example professionally cleaned to original luster with a little scattered wear, and a few light scratches remaining, otherwise excellent).

Est.: \$250 - \$450 • Min. bid: \$130



Lot 301

Black Glass Wine Bottle, England, 1770 – 1780. “**M Stripp / Lyskerd**” (on applied seal). Deep olive, dip mold, wide-body squat cylinder, sheared mouth with applied string rim – domed base with sand type pontil scar, ht. 9 ¾”; (some moderate exterior wear and light scratches including a 1/8” x 3/8” scrape, or scuff mark on the shoulder, and a 1/8” flake on back edge of lip, a bit of light interior stain, but not terribly distracting). Burton, p.1258. Rare.

Est.: \$800 - \$1,200 • Min. bid: \$400



Lot 302

Black Glass Wine Bottle, England, 1790 – 1800. “**J. Kingdon / M.-Church**” (on applied seal). Deep olive, dip mold, wide-body squat cylinder, sheared mouth, applied short, wide taper collar – sand type pontil scar, ht. 8 ½”; (some typical scattered usage wear, and some fine high point wear on the seal, otherwise excellent). Burton, p.1174. Per Burton, the bottle was blown for John Kingdon of Marhamchurch, Cornwall. He was vicar of the local church. Very rare, this is the example pictured in Burton.

Est.: \$800 - \$1,200 • Min. bid: \$400



Lot 303

Black Glass Wine Bottle, England, 1780 – 1790. “**P. / Sluman. / Stratton**” (on applied seal). Deep olive, dip mold, wide-body squat cylinder, sheared mouth with applied string rim – sand type pontil scar, ht. 8 5/8”; near mint; (a little typical light usage wear, otherwise perfect). Burton, p.1251. Very rare. Per Burton, the bottle was blown for Philip Sleeman, an Excise Officer at Stratton, Cornwall. One example listed in a private UK collection. Strong, crisp seal impression.

Est.: \$1,000 - \$1,500 • Min. bid: \$500



Lot 304

Black Glass Wine Bottle, England, c.1790. “**Jas / Venning / Trevosa / Southpetherwin**” (on applied seal). Deep olive, dip mold, wide-body squat cylinder, applied sloping collar with bevel – sand type pontil scar, ht. 8 ½”; (a small hole, approx. 3/8”, drilled near the base of the bottle on the reverse has an early fill / repair; some minor wear and light interior content haze). Burton, pgs. 1281-1282. Very rare. This is the example noted and photographed in the Burton book.

Est.: \$500 - \$800 • Min. bid: \$250



Lot 305

Rare, Black Glass Wine Bottle, Continental, Silesia Region, Poland, 1790 – 1820. “KO” (on applied seal). Light yellowish olive, dip mold, cylindrical with gracefully sloping cone-type shoulders, applied string rim – blowpipe pontil scar, 10 ½”; (near perfect, just light usage wear). An extremely rare, important, sealed Silesian spirits bottle. Believed to be the only known example, and likely unique, with this seal. Ex. Rainer Kosler collection (author of “*Flasche, Bottle und Bouteille*”).

Est.: \$500 - \$800 • Min. bid: \$250



Lot 309

Half-size Early Freeblown Utility Bottle, Continental, France, Belgium, Dutch, 1770 – 1800. Yellowish olive amber, cylindrical with gracefully sloping shoulders, sheared mouth with applied string rim – kickup base with blowpipe pontil scar, ht. 7 ¼”; (a little expected light usage wear, and some relatively minor content haze in one side of the bottle, otherwise excellent). A very attractive utility, scarce size.

Est.: \$200 - \$400 • Min. bid: \$100



Lot 306

Rare, Black Glass Wine Bottle, Continental, Northern Germany, 1790 – 1820. “HR” (on applied seal). Beautiful, medium grass green coloration, dip mold ‘hock wine’ form, applied string rim – kickup base with blowpipe pontil scar, ht. 12 ½”; (near perfect, light usage wear). VdB, plate 265. A very rare seal with only a small handful known, and virtually impossible to find in this condition! Provenance: Ex. Rainer Kosler collection (author of “*Flasche, Bottle und Bouteille*”).

Est.: \$500 - \$800 • Min. bid: \$250



Lot 310

Early Champagne or Utility Bottle, Continental, France or possibly Belgium, 1730 – 1760. Deep amber shading to a dense amber through the neck and towards the base, cylindrical, freeblown or possibly dip mold, flowerpot form with slightly tapered sides and gracefully sloping shoulders, sheared mouth, applied string rim – kickup base with blowpipe pontil scar, ht. 10 ½”, near mint; (a little typical minor wear, and some light interior residue). Great condition, pleasing form and symmetry.

Est.: \$200 - \$400 • Min. bid: \$100



Lot 307

Early Champagne or Utility Bottle, Continental, France, 1720 – 1740. Medium sea green, early flowerpot form with elongated neck, sheared mouth with applied string rim ¾” below shear – kickup base with blowpipe pontil scar, ht. 9 ¾”, perfect. A rare, very desirable early form of ‘Gresigne glass’ from the oak forests of Gresigne. The beautiful color is said to come from the use of fern ashes in the glass making. In addition, outstanding character – the glass is filled with tiny bubbles.

Est.: \$300 - \$500 • Min. bid: \$150



Lot 311

Rare, Magnum-size, Black Glass Mallet Form Wine Bottle, England, 1725 – 1735. Deep olive green, mallet form with drawn-up shoulders, sheared mouth, applied string rim – domed base with sand type pontil scar, ht. 10 ½”, dia. approx. 6 ½”; (some moderate-to-heavy exterior usage wear and scratches around the body, but no other form of damage, and with full original body luster). See Dumbrell, p.81, plate 21; VdB, plate 19. Very rare size. Provenance: Fred Swiechowicz collection.

Est.: \$600 - \$900 • Min. bid: \$300



Lot 308

Early Champagne or Utility Bottle, Continental, probably northeast France, 1720 – 1740. Medium green with an olive tone, flowerpot form with sides flaring outward to gracefully sloping cone-type shoulders, sheared mouth with applied crimped string rim – kickup base with blowpipe pontil scar, ht. 10”; (some scattered light wear as well as a minor area of patchy haze, primarily on one side only, some light interior content stain). VdB, plate 259. Another nice, crude, bubbly example.

Est.: \$200 - \$400 • Min. bid: \$100



Lot 312

Nailsea Style Handled Jug, England, possibly Nailsea Glass Works, Bristol, 1815 – 1825. Yellowish olive with white enamel flecks scattered throughout, ‘jug form’, applied handle, applied double collar – sand type pontil scar, ht. 9 ¾”; (some light scratches and usage wear, primarily opposite the handle where it was leaned over to pour; end piece of the lower handle attachment broken, and a hard-to-see ‘star crack’ in the body with several ½” ‘legs’). It’s not perfect, but it is beautiful and rare!

Est.: \$250 - \$450 • Min. bid: \$130



Lot 313

Early, Black Glass Boot Bottle, probably Germany, 1740 – 1770. Medium yellowish olive, side flattened kidney form, sheared, tooled mouth with applied string rim – blowpipe pontil scar, ht. 6 ¼", length 7 ½"; (some moderate-to-heavy exterior usage wear; some dullness or light haze, primarily on one side only, and a bit of patchy minor interior

haze). VdB, plate 216; Dumbrell, plate 56. More than 250 years 'young', with honest usage wear. Fred Swiechowicz collection.

Est.: \$500 - \$800 • Min bid: \$250



Lot 317

Unusual Case Bottle, America, probably 1885 – 1895. Beautiful, medium-to-deep cobalt blue, almost a violet tone near the base, square with beveled corners, tapered case form, tooled blob collar – smooth base, ht. 10 1/8", virtually perfect; (a couple tiny, onionskin-thin open surface bubbles, and a little light interior residue near the base, otherwise pristine). A beautiful, very scarce-to-rare color for a case bottle, one that will definitely stand out on a shelf!

Est.: \$400 - \$800 • Min. bid: \$200



Lot 314

Rare, Octagonal Utility Bottle, Continental, probably North Germany, 1770 – 1790. Clear, yellowish olive coloration, dip mold, octagonal form with wide beveled corners, short narrow neck, sheared mouth with applied string rim – blowpipe pontil scar, ht. 7 7/8", near mint; (just a trace of minor wear, a ¼" paper-thin open bubble, and light interior residue in the shoulder). A very eye-appealing early utility, large size, rare form, outstanding condition.

Est.: \$400 - \$600 • Min. bid: \$200



Lot 318

Freeblown Demijohn or Storage Bottle, Germany, Black Forest Region, 1780 – 1800. Yellowish green (delicate 'forest glass'), original heavy woven wicker covering, cylindrical, likely freeblown, 'funnel-type' neck with a sheared and slightly flared mouth – blowpipe pontil scar, ht. 16 3/8"; (bottle is perfect; wicker has been partially cut around perimeter between 2nd and 3rd row above base, likely to reveal the pontil, and can easily be reattached). An attic found example.

Est.: \$200 - \$400 • Min. bid: \$100



Lot 315

Lot of (2), Early Case Bottles, Dutch, Belgium, Germany, 1770 – 1810. Light-to-medium yellowish olive and bright olive green, both are dip mold, nearly straight-sided, applied ring collar and applied inverted taper collar – both with blowpipe pontil scarred bases, ht. 10" and 11 1/8" respectively; (both with just a bit of typical light usage wear, yellow olive example has a little light interior haze in the shoulder). Both are beautiful with excellent 'see-through' clarity and complementing colors.

Est.: \$175 - \$350 • Min. bid: \$90



Lot 319

Demijohn, New England, a Stoddard, NH glasshouse, 1850 – 1860. Yellowish olive amber below the shoulders shading to a rich, deep olive amber through the neck, freeblown, or possibly dip mold, wide body with gracefully sloping shoulders, pleasing, 'squat' appearance, applied sloping collar – sand type pontil scar, ht. 11 3/8", virtually perfect; (only slight wear, and a partially open bubble in the shoulder). Beautiful color, rare, eye-appealing 'stubby' bullet form. Fred Swiechowicz collection.

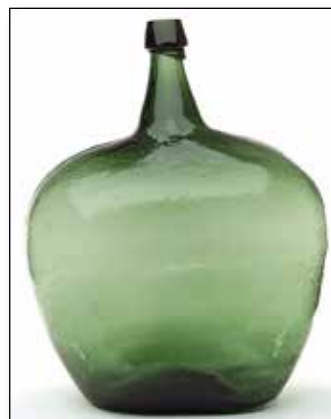
Est.: \$400 - \$600 • Min. bid: \$200



Lot 316

Giant Size, Early Case Bottle, Continental, probably Germany or Netherlands, 1780 – 1800. Olive green coloration, square with nearly straight sides, sheared mouth with applied ring collar – blowpipe pontil scar, ht. 18 ¾"; (some light scratches and a moderate amount of typical exterior usage wear, as expected, otherwise near mint). VdB, plate 83. A mammoth example! At 18 ¾", almost 19", it is one of the largest, and most impressive case bottles that you are likely to find.

Est.: \$1,200 - \$2,200 • Min. bid: \$600



Lot 320

Demijohn, America, 1855 – 1875. Bright grass green in the body, shading to a rich, almost forest green coloration through the shoulders and neck, 3-pc. mold, flattened apple form, applied sloping collar – heavy, glass tipped pontil scar, ht. 17 ½", near mint; (slight trace of very minor wear, otherwise perfect). A very pretty demijohn, beautiful color, fantastic character having very crude, pebbly glass, a bit of a lean, and two 'nail-head' type depressions below the shoulder, possibly from a mold repair.

Est.: \$250 - \$450 • Min. bid: \$130



Rare & Colorful Pickle & Peppersauce Bottles

Lot 149

Lot 145

Lot 143

Lot 147

Lot 142

Lot 150

