

Wingham High School Directory 2022



2022 School Leaders - Mia, Miranda and Lester

CONTACT US: Ph. 6553 5488

✉ Rowley St Wingham NSW 2429

Email: wingham-h.school@det.nsw.edu.au

Website: www.wingham-h.schools.nsw.edu.au



Key Personnel

Principal

Mr Paul Ivers

Deputy Principals

Mrs Mary Doust - Years 7, 9, 11

Ms Monique Musgrove - Years 8, 10, 12

Head Teachers

Mr Brett Sedgwick - English, Drama, Language

Mr Mick Wright - Mathematics

Mr John Hawkins - Science, Agriculture

Mr Kurt Croker - HSIE

Mrs Kat Brown - CAPA, PDHPE

Mr Damien Keen - TAS

Mrs Jenni Boyle - Wellbeing, Learning Support

Mrs Shirley Clissold - Administration

Mrs Dianne Clarke - Administration Manager

Year Advisers

Year 7 - Mr Adam Carney

Year 8 - Mr Peter Rollison

Year 9 - Ms Joanne Abbott

Year 10 - Ms Dheera Smith

Year 11 - Mr Andrew Edwards

Year 12 - Ms Suzanne Brook

Careers Adviser

Mrs Shirley Clissold

School Counsellor

Mrs Kellie Connelly

Learning Support

Mrs Nicole Austin

Mrs Karen Smart

Aboriginal Education Worker

Mrs Kelly Holden

Inside:

- core values
- communications
- who's who
- awards
- core rules
- sport and PDHPE
- uniform
- student wellbeing
- extra curricula activities
- assessment and reports
- buses and travel
- mobile phone use
- community links.

Daily organisation:

- school starts at 9:00am
- school finishes at 3:20pm
- 6 periods operate each day
- Friday (sports day) has 3 periods.

Weekly organisation:

- our school operates on a 10 day cycle
- week 1 and week 2
- each has a different timetable.

Sports day:

- sport days are Friday
- 12:10 - 2:30pm
- Mr Edwards is the sports coordinator.

Whole school assembly:

- Tuesday 9:10am in the quad

Year meetings:

- Wednesday week 2
9:10am with year advisers.



Table of Contents

Welcome to Wingham High	3
Leadership	4
Core Values	4-5
Communication/Health and Emergency Information	6-7
Bell Times and Roll Call	7
Curriculum and Assessment	8-9
School Farm and Agriculture	10
Extra Curricular Activities	10-11
Awards and Commendations	11
Mobile Devices/Personal Property	12
Sport	13
Student Wellbeing/Year Advisers	14-15
Discipline	16
Canteen	16
Student Assistance	17
Money Matters	17
Uniform and Footwear	18
Bus Routes	19
Community Links	19
Who's Who at Wingham High	20
General classroom equipment requirements	21-22

RESPECTFUL
RESPONSIBLE
POSITIVE



Welcome to Wingham High School

Congratulations on choosing Wingham High School as your child's school. We trust that our association will be an exciting and positive endeavour for all of us, especially for your child.

The school has a set of core values which permeate all that we do. We strive to ensure that all of our staff and students are **respectful, responsible and positive**. Our core values are openly discussed and displayed around the school. Students are expected to and are shown how to, put these into practice at all times.

Our school provides **all** children with the opportunity for success. Of most importance is that all students are **known, valued and cared for**. As a school we aim to ensure all children are **challenged and supported** to continue in their learning progression.

Schooling is a partnership where we can all enjoy and benefit from sharing new learning experiences with students and take pride in their development from child to young adult. Please do not hesitate to contact the school if you have questions about the progress of your child. Student Year Advisers can help support student concerns - alternatively, the Deputy Principals, or student's subject teachers are available to help.

Wingham High School celebrates the contributions of our parents and community. We invite you to share in the education of your child during these critical years. There is every expectation that aspects of school will be challenging, this is important in learning. Critical is teacher support and guidance coupled with individual drive and commitment. Parental help and encouragement toward your child is imperative to quality learning.

Additionally many parents have skills that would assist students and staff. We invite you to become closely involved in the activities of the school in ways that you feel are appropriate. Many prefer to assist in the canteen, while others assist with specific programs such as reading and sport programs or in the library. Volunteers are needed to help with the canteen and at the school farm. If you have time to spare, please contact the school to register your interest.

I look forward to working in partnership with you for many years to come.

Paul Ivers
Principal

Message from the P&C

Welcome to Wingham High School. As a parent, carer or guardian of a child making the change from primary school to high school it can and will be quite challenging for both you and your child. You will find there are opportunities for you to learn more about Wingham High School through the communication of newsletters online at www.wingham-h.schools.nsw.edu.au (also available in hard copy at the front office and the library), parent/teacher evenings and the P&C. You are welcomed and encouraged to make use of all of these opportunities.

The Wingham High School P&C is the parent body and through the canteen helps with fundraising and donating funds to our school to help students with their educational needs. The P&C meet on the first Thursday of every month (except school holidays) at 6pm in the school library. You will find the P&C a great forum for you to meet the members and other parents like yourselves. The school Principal or a representative of the Principal attends these meetings and informs us of what is happening in our school and with the education of the students.

The school has its own 21 seater Toyota coaster bus. This has shown to be a great asset to our school. It is utilised for the use of sporting activities and other school representations. It has saved our school a considerable amount of funds which would otherwise have been used for hiring local buses or families having to transport the children themselves. The Wingham Rotary Club continues to hold an annual dinner at our school each year to support the maintenance and costs of the bus.

Our canteen manager, Mrs Judy Fowler and her group of hard working volunteers provide a fun environment and a healthy canteen. Judy is always looking for more volunteers so if you have a little spare time once a month, you may find this rewarding.

Our fundraising for the school is solely done through the canteen. Judy has a well-run canteen and all food is cooked on the premises and under the guidance of the Healthy Kids Canteen. Students have a range of food with two menu changes every year. Terms 4 and 1 are the summer menu and Terms 2 and 3 are the winter menu. Judy is constantly looking at new and healthy foods for the students and staff at Wingham High School.

There are many ways in which you can help and support the school, some of these are through working bees, helping in the canteen or maybe even being a member of the P&C, however little, I am sure you will find it a rewarding experience for both you and your children. I would like to encourage you to come along and meet the school fraternity and see what our high school can offer you and your children. We have a wonderful high school here at Wingham and a great local community supporting us.



Leadership

The Student Representative Council (SRC) is elected by students. The council is responsible for discussing issues of concern raised by students. Elected members of the council hold office for 12 months.



The SRC is an active, motivated group of peers who are sorted into teams depending on issues arising. For example the environment group lobbied hard for specific rubbish bins located around the school and the school presentation team modified the uniform for students. The SRC organise socials, as well as coordinate a variety of lunchtime activities.

School leaders are elected by the students and staff. At the start of Semester 2, Year 11 nominate, then candidates are interviewed and are required to make a brief speech outlining their attributes and their plans for the school's development to a whole school assembly. The voting system is exactly the same as those systems used for state and federal elections in Australia - students are marked off the roll and then privately register their votes.

For 2022 we have a leadership team from the Year 12 representatives. Holding the position are two captains and a vice captain supported by the remainder of the SRC.

The SRC meet as a team for STAR each morning.

School Leaders & SRC

Captains: Lester Andrews and Miranda Frendin

Vice Captain: Mia Polley

2022 SRC members are:

Year 12 - Isobel Butler-Kwa, Stephanie Davis-Stone, Dean Stacey, Lea Urquhart, Kali Wells

Year 11 - Freya Raglus

Year 10 - Hannah Beard, Sharli Brown, Breanna Colvin, Silalak Junmeka, Erik Waldron

Year 9 - Mikaela Berry, Jonah Harrell, Matilda Hurst, Lucas Lyon, Nelleke O'Connell, Emily Prior, Jai Wakeling

Year 8 - Misty Deacon, Eliza Dedman, Alicia Goodlad, Madalyn Hall, Liam Hoare, Ian Retzlaff, Annabelle Ross, Simo Waldron

Year 7 will be elected in Term 1 of 2022

SRC Coordinators

Ms Julie Leslie and Mrs Stacey Harrell



Classroom Expectations

Students at Wingham High School are provided with a high quality education so that they may learn to the best of their ability and become self-disciplined, tolerant, enterprising and contributing members of our school and the Wingham community.

Core rules for student behaviour have been developed to establish consistent expectations in support of those aims. The core rules are based on Wingham High School's core values of **respectful, responsible and positive** and on the Department of Education's core values of integrity, excellence, respect, responsibility, cooperation, participation, care, fairness and democracy.

Respectful

- Allow teaching and learning to occur
- Listen and follow instructions
- Hands up to speak
- Speak politely
- Hands and feet to yourself
- Treat people how you like to be treated

Responsible

- On time, in class, on task
- Phones off and away
- Keep up to date – meet deadlines
- Have correct equipment
- Look after equipment and environment
- Own your behaviour
- Be safe

Positive

- Do your best to learn and achieve
- Support and encourage each other
- Engage with your learning
- Seek and accept feedback to improve
- Learn from mistakes

Wingham High School Core Values Matrix



All Settings – Everyone, everywhere, all the time.		Hallways	Student Services	Canteen	Toilets	
Respectful	Follow instructions. Listen and speak politely. Dress appropriately. Care for the environment.	Keep left and keep moving. Line up outside correct classroom.	Use please and thank you. Speak quietly. Walk. Be patient.	Use please and thank you. Use the bins. Be honest. Year 12 only in senior line.	Keep it clean. Look after the facilities. Respect privacy of others.	Respectful
Responsible	Care for others and their property. Be in the right place at the right time, doing the right thing. Accept responsibility for my actions. Act safely. Be honest.	Leave other's and their possessions alone. Go directly to class. Have a class pass during class time. Single lines, single file!	Right place, right time. Knock and wait. One student per issue. Be honest.	Leave other peoples stuff alone.	Be prompt back to class. Smoke free zone.	Responsible
Positive	Be ready to work and learn with correct equipment and attitude. Celebrate achievements. Accept the challenge and have a go. Be proactive.	Smile and say hello!	Smile. Say hello!	Line up and wait my turn. Purchase for myself. Smile!		Positive

Senior Area		Active Playground Courts Oval Quad	Passive Playground Areas	Ag Farm	Front Gate	Buses	
Respectful	Year 11 and 12 only. Appropriate personal space. Sit on seats. Keep area clean and tidy. Be considerate to nearby lessons.	Hands and feet to self. Bags, food and rubbish off oval. Follow instructions. Speak politely. Touch football only.	Place litter in bin. Sit on seats. Speak politely. Keep noise levels down.	Follow animal welfare and farm safety rules. Use protective clothing.	Follow instructions. Speak politely. Use footpaths.	Hands to self. Be polite to others. Use the bins.	Respectful
Responsible	Care for others property. Use your time productively.	Move safely. Stay in bounds. Return equipment before the bell. Leave others property alone. Move to class on the bell.	Stay in bounds. Leave other's property alone. Year 7 only in junior cola in Term 1.	Get permission. Get a farm pass. Leave other's property and workspaces alone.	Right place right time. Get a leave pass before you leave. Move straight into school. Walk! Keep area clean.	Stay behind the yellow lines. Single line on and off.	Responsible
Positive	Use the space and time to study. Encourage others to study.	Play by the rules. Include others. Let others play without interference.	Include others.	Share resources work as a team.	Smile	Wait your turn.	Positive

Communications

Website: www.wingham-h.schools.nsw.edu.au

Email: wingham-h.school@det.nsw.edu.au

The Wingham High School website is an invaluable source of information about all aspects of the school which are generally planned or fixed in nature.

Located on the home page:

About our School

School Planning and Reporting

Location and Transport

Enrolment

Financial Contributions and Assistance

Our Staff

Rules and Policies

What we Offer

Notes

Supporting our Students

Student health and safety

Help with homework

What to expect in high school

Parents, carers and the community

Careers

Learning at our School

Creative Arts

English

Human Society and its Environment

Languages

Mathematics

Personal Development, Health and Physical Education

Science

Technological and Applied studies

Religion and Ethics

Life Ready

Learning across the Curriculum

Assessment and Reporting

Scholarships and Awards

Library

HSC Minimum Standards

Assessment

National Assessment Program – Literacy and Numeracy (NAPLAN)

Validation of Assessment for Learning and Individual Development ((VALID)

Record of School Achievement (RoSA)

Higher School Certificate (HSC)

Uniform

School Uniform Policy

Acceptable Footwear

Printable Forms

Absentee Note

Financial Assistance Form

Illness or Misadventure Application

Special Religious Education withdrawal note

Student Accident Claim Form

General Consent Form

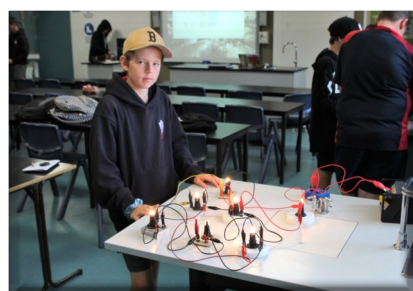
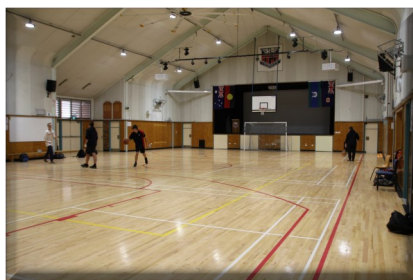
Change of Details

Socials - Student Code of Behaviour

School Directory

Individual Health Care Plan

School Calendar



Contact Details

The school requires current personal and emergency contact details, including a mobile phone number and email. A copy of student details is mailed home at the start of each year for confirmation of current information. Ensure your information is up to date by returning the signed forms and contact Reception whenever details change.

SMS messages

SMS messages will be sent to parents to confirm daily school absences and late arrival. Parents are asked to reply to the SMS with a brief explanation. Also general reminders of upcoming events will be issued via SMS.

Email

Newsletters, reminders and other useful information are often sent out via email.

Facebook

Wingham High School Facebook page is managed by the schools promotion officer and the Principal. It is primarily used to communicate information regarding whole school or year group events such as exams, parent/teacher interviews, carnivals, socials etc.

Emergency Information

When school operations are effected by emergency situations, information will be communicated via Facebook, SMS, email and local radio.

Newsletter

The newsletter is published in weeks 3, 6 and 9 of each term, via Facebook, the schools website and emailed to students and families. A hard copy can be collected from Reception or the Library. Not for profit community groups are invited to promote activities for students in the newsletter by forwarding information or flyers to the school via email.



What to do

....if a student needs to leave the school

No student may leave the school without permission from parents/carers or without the direct permission of the Principal or Deputy Principals and must sign out at Student Services before leaving the school grounds.

On written application a permanent lunch pass may be issued for a student to go to his/her own home for lunch.

A student who lives out of town is permitted to bring a note from a parent to do an errand in Wingham at lunchtime. A pass may be issued, usually not more often than once a week, for this purpose.

A student who has, say, a dental or medical appointment should bring a note from a parent. The note should indicate the expected return time to school. An appointment card should be supplied for confirmation of the appointment.

Office staff confirm passes from 8:45am each day at Student Services. Students must sign out at the time of leaving.

..... if a student is late to school

The student should hand a note explaining the lateness to Student Services, If a student is driven to school and arrives late the parent should come to Reception and tell the staff the reason for being late. Reasons such as 'I slept in' are not regarded as a justified absences. Notes explaining lateness are not accepted the next day and a SMS will be sent on the day.

..... if a student has been absent

The student should bring a note to Student Services when the student returns to school or the parent can phone or email the school, a SMS will be sent for whole day absences.

..... if a student is feeling sick

The student's class teacher will provide a note or pass to present at Student Services. The student will be admitted to the first aid room and their parent/carers will be contacted for them to be collected. The first aid room is for administering first aid and not for students to stay in for any length of time.

Students must present to Student Services when arriving and leaving school grounds.

Parent/Carer permission must be supplied via a note, an email, a phone call or in person.

Bell Times

The school operates six teaching periods per day based on a 10 day cycle. All school days commence with a roll marking and a reading period - STAR (sit tight and read) of approximately 20 minutes. The bell times are as follows:

Period	Monday	Tuesday	Wednesday	Thursday	Friday
STAR	9:00-9:20	9:00-9:20	9:00-9:20	9:00-9:15	9:00-9:20
1	9:20-10:10	9:20-10:10	9:20-10:10	9:15-10:05	9:20-10:10
2	10:10-11:00	10:10-11:00	10:10-11:00	10:05-10:55	10:10-11:00
Recess	11:00-11:20	11:00-11:20	11:00-11:20	10:55-11:20	11:00-11:20
3	11:20-12:10	11:20-12:10	11:20-12:10	11:20-12:10	11:20-12:10
4	12:10-1:00	12:10-1:00	12:10-1:00	12:10-1:00	Lunch
Lunch	1:00-1:40	1:00-1:40	1:00-1:40	1:00-1:40	SPORT
5	1:40-2:30	1:40-2:30	1:40-2:30	1:40-2:30	SPORT
6	2:30-3:20	2:30-3:20	2:30-3:20	2:30-3:20	

As shown above, the school day finishes at 2.30pm on Fridays. Staff supply supervision for bus travellers, until they catch their bus. Students walking home may leave at 2:30pm. Those catching buses **must** wait at school until 3:20pm.

Roll Call/STAR (Sit Tight and Read)

At Wingham High, we value the development of reading skills and an interest in reading. We provide all students with regular reading time which is incorporated into our roll call between 9:00 and 9:20am each morning. Students are expected to develop self-reliance and provide reading material for 15 minutes each day. We recommend each student use STAR time to read a novel, a magazine or other books being studied in class. For senior students only, STAR can be used for research, revision or other written work.

Medication

Parents/carers of students receiving prescription medications in school hours **must sign a Prescribed Medication Release**. A doctors prescription must also be supplied before any medication will be issued at school. **Please note:** Panadol is **not available** and cannot be issued to students at the school.

Health Care Plans

The Department of Education requires that an *Individual Health Care plan, Anaphylaxis Emergency plan or Asthma Emergency plan* be provided to the school **from a doctor** if your child has been diagnosed as suffering from any of these or any other serious health issues.

Please contact the school and/or ensure that the appropriate sections of the enrolment form are completed to alert us to the health care needs of your child.



Curriculum

Most subjects are studied for the whole year, but some subjects operate on a semester or term basis.

Year 7 subjects:

In Year 7 all students study the same subjects for the periods shown per fortnight.

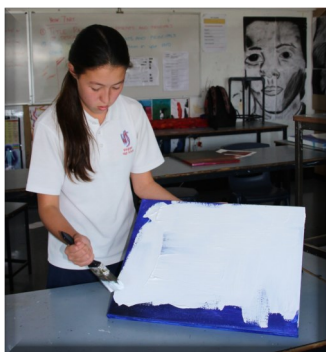
English	8	Geography	3
Maths	8	History	3
Science	8	Language	6
Technology	6	Art	3
PD/H/PE	6	Music	3

Year 8 core subjects: As for Year 7 plus Future Focus, but without Language.

Year 9-10 core subjects: English; Maths; Science; History; Geography; PDHPE

Years 9-10 electives

- * Agriculture Technology
- * Child Studies
- * Commerce
- * Computing & Multimedia Technology
- * Design & Technology
- * Drama
- * Food Technology
- * Geography
- * Graphics Technology
- * History Exposed
- * Industrial Technology: Automotive/Metal
- * Industrial Technology: Engineering
- * Industrial Technology: Metal
- * Industrial Technology: Timber
- * Indonesian (Language)
- * Marine & Aquatic Studies
- * Music
- * Physical Activity & Sports Studies (PASS)
- * iSTEM (Science, Technology, Engineering & Mathematics)
- * Textiles Technology
- * Visual Arts



Senior Curriculum

Senior students study a range of courses for their HSC. Selections are made late Term 2 and courses finalised in late Term 3. Courses run according to the numbers of students selecting them.

Vocational Education (VET)

The school offers a range of VET courses for senior students including Construction, Hospitality, Primary Industries, Industry-Based Learning and Work Studies. Senior students also access courses at Taree TAFE on various days.

Senior Subjects

English (compulsory); Mathematics; Biology; Chemistry; Physics; Ancient and Modern History; Business Studies; Legal Studies; Design & Technology; Industrial Technology Timber and Multimedia; Textiles; Hospitality; Food Technology; Agriculture; Marine Technology; Primary Industries; Visual Arts; Music; Drama; Entertainment; PDHPE; Sport, Lifestyle and Recreation; and Computing.



Homework

Loads vary from time to time and between subjects. Homework may be completion of set work or major assignments or extension work. A homework diary will help students to see what has to be done.

Prepare to Succeed

This is a homework centre that operates each Tuesday afternoon from 3:30 to 4:30pm.

It is staffed by teacher volunteers from a variety of subject areas.

All students from Years 7-12 are welcome to participate. Students who have impending assessment tasks or would like help with any of their learning and assessment skills are particularly encouraged to take advantage of this program.

Students can work with peers, in groups, or seek individual tuition from teachers.

Senior Success

Senior Success is a study and organisation program for Years 11/12.

This program is now online in a Google Classroom where senior students and their parents are invited to join, comment, request topic areas and look at information and presentations uploaded in a variety of topic areas. We have moved away from face to face meetings as we do understand people have busy lives and the online convenience of being able to find what you need when you need it and wherever you need it makes the program more accessible to everyone.

Some of the topics covered include:

- * organisation
- * study habits
- * learning styles
- * study methods, summaries and exam techniques
- * essay writing
- * stress management
- * how to communicate and negotiate needs
- * exam techniques



Assessment and Reporting

Academic reports are issued twice a year. Parent/teacher evenings are also held twice a year when parents are invited to meet with teachers to discuss student progress. While this provides an organised meeting time, parents are urged to contact the school whenever concerns arise. Teachers are only too willing to discuss your child's progress with you whenever necessary. Please feel free to contact the school to arrange an appointment with your child's teacher or the year advisers particularly if you have a serious concern about your child's progress.

Assignments and tests form an important part of subject assessment. Students are expected to complete all set assignments by the due date to satisfy course requirements. Your support and encouragement at home will assist your child's progress - you can help by checking due dates in your child's homework diary.

Assessment Calendars

Assessment calendars are issued to all students and are also found on the school website:

<http://www.wingham-h.schools.nsw.edu.au/years>

Authentic Assessment

As part of our replacement schedule for the Year 10 School Certificate examinations and in-line with the NSW Education Standards Authority (NESA) Year 10 Record of Achievement (RoSA) criteria, established in 2011, we run a program called Authentic Assessment for Year 10.

What is Authentic Assessment?

Students talk about three of their Year 10 assessment tasks to an interview panel consisting of one teacher, one community person and one student.

One of the tasks presented must be from their core subjects - the English major work, Science student research project or Maths project; another must be from a core subject and a third from an elective.

A cover letter and CV is also to be presented to the coordinator before the interview, so panel members can read this information as an introduction.

Further detail is available from the school website:

<http://www.wingham-h.schools.nsw.edu.au/years/year-10/year-10>



School Farm and Agriculture

Wingham High School farm is located adjacent to the Manning River. The original land grants in this area were held by a dairy and piggery which supported the early Wingham township. Today the school farms cover an area of 45 acres of alluvial flood plain. Strong community lobbying in the 1980's secured this unique resource for the Wingham High School farm.

The top farm involves a range of enterprises including poultry, sheep, vegetables and feedlot cattle. The bottom farm is situated on over 40 acres of pasture improved alluvial country allowing for extensive grazing and silage production. On average 30 beef breeders are held on the property to produce calves for sale and show.

As part of the high school curriculum, Agriculture is offered to all students as a subject and interest area. Students in Years 9, 10, 11 and 12 can elect Agriculture as a subject of choice. Elective Agriculture students are required to undertake work experience on the school farm as part of their course requirements. The farm assistant who currently works 3 days a week is strongly involved in this program.

Currently, Year 8 students are introduced to the subject during their Science lessons for 2 periods per cycle of the timetable. This gives students the unique opportunity to be involved in all aspects of plant and animal management.

The Wingham community have continued to show strong support for the farms development and maintenance via a volunteer program and donations of labour and materials. The strong community connection continues via events such as Wingham Beef Week.

Interested students can apply to become involved in the Wingham High Agriculture Show Team. Students can select the show team as a sport and develop their passion and skills in a range of enterprise based activities. Wingham High School are extremely proud of the unique opportunities provided to our students. They are provided with one of the best functional/productive school farm resources of any government high school in New South Wales.

Our students are very fortunate to be able to learn about the importance of food security and be involved in the food production process from paddock to plate in a community focused learning environment.



Library

The Library is open from 8:45am in the morning, at lunchtime from 1:10pm, and for classes with their teachers during the day.

Students are encouraged to borrow from a range of fiction and non-fiction titles. The Library has computers, with appropriate software and internet access, available for research and learning.

The Library has a subscription to World Book Online, The Sydney Morning Herald and Cosmos magazine. Students can reserve a computer for lunchtime.

Mr Byrne and Mrs Louis are always available to help students.

Excursions

Excursions enhance class work. They are kept to a minimum to avoid undue financial burden on parents. Student participation in excursions is encouraged as part of the school's academic and social program.



Extra Curricular Activities

Wingham High School offers students a wide range of activities apart from subject lessons.

Students may be involved in such things as:

- * Taree Eisteddfod
- * Manning Valley Debating
- * music festivals
- * representative sporting teams
- * art shows
- * Maths and Science competitions, state wide
- * Science and Engineering Challenge
- * Australian Geography Competition
- * the school farm
- * agricultural shows
- * Wingham Beef Week
- * cattle parading and judging
- * National Solar Boat Challenge
- * dance groups
- * writing competitions
- * Rural Fire Service training
- * environmental groups
- * excursions
- * our highly acclaimed school drama and musical productions.

Work Experience

Work experience provides students an opportunity to see how the world of work operates in reality. It is a chance to see whether they like or are suited to a particular job or occupation, or conversely, to see that they do not like or are not suited.

Work experience operates as an on demand model for Years 10 to 12 whereby students can choose when to go, based on availability of employers.

Most VET subjects in Year 11 and 12 require a minimum number of work placement hours to complete the course.

Certain periods are blocked out, for example, examination and authentic assessment weeks. Year 10 students are encouraged to go to work experience before subject selection decisions are being made.

Successful work experience placement is acknowledged on end of year school reports.



Awards and Commendations

Excellence Awards Evenings Wingham High School has a policy of recognising excellence in a variety of fields – academic, sport and community involvement. To foster this policy special Excellence Award Evenings are held each semester and a Sports Assembly is held at the end of the year. Parents and carers are officially invited to these occasions. At the Excellence Award Evenings we celebrate Academic Excellence, 100% Attendance, Endeavour Gold and Excellence in the spheres of Community and Leadership.

The Platinum Award is the highest level of WHS Endeavour Scheme. It rewards consistent and sustained demonstration of the school's core values in action across several years of school and in the wider community.

Awards are presented at the Annual Presentation Evening.

The Endeavour Scheme

At Wingham High School we are proud of the fine achievements of our students. Many students excel in sporting, social, academic and cultural activities. Our school rewards students for effort and achievement. We operate a merit system which recognises students who work hard in class and make positive contributions to the school and community.

Endeavour Progress Snapshots are issued at year meetings twice a term from all subjects and sport. They measure interaction and contribution within the school community and encourage improvement.

Rowley slips are issued freely and frequently by all staff for quality work, special effort, good conduct and applying the core values. Students collect slips and place them in the year advisers Rowley box . At each year meeting two slips are drawn and a canteen voucher is won.



Endeavour Progress Snapshot

Endeavour Progress Scores

- 10 Exemplary
- 9 Excellent
- 8 Very Good
- 7 Good
- 6 Satisfactory
- 5 Borderline
- 4 Some Concerns
- 3 Serious Concerns
- 2 Unsatisfactory Performance
- 1 Non-performance

Measures of Success

- ⇒ In the **classroom** students are:
 - Responsible for own learning
 - Supportive of others learning
 - Engaged
- ⇒ Students show **citizenship** by:
 - Being in uniform
 - Respectful of equipment
 - Positive in attitude
- ⇒ Students **maintain positive social interactions** with:
 - Peers
 - Staff
 - Visitors

Personal Electronic Devices & Mobile Phones

Mobile phones, iPads, laptops and other personal communication devices are in common usage in our society. Teachers and students often use these devices as learning tools in the classroom and it will always be clearly indicated when students are able to use their phones in class, otherwise phones are OFF and AWAY.

At Wingham High School we encourage students and teachers to use mobile computing in the classroom with the following rules governing their use.

- * Teachers will expect that mobile phones are turned off and remain out of sight when they are not part of the class lesson. Students are not permitted to make personal calls, respond to calls or send personal text messages while in class.
- * If students use their phones inappropriately during class time or without the permission of the teacher they will be subject to the disciplinary procedures in place at Wingham High. Students are not to have inappropriate content on their phone.
- * Under no circumstances can any electronic device with a storage capacity be in the possession of a student during examinations or any assessment task. This will result in an automatic zero for the exam or assessment without exception.
- * In the playground, when in communication with a staff member it is expected that earphones will be removed as a courtesy to the speaker. If a staff member needs to address a student when a phone conversation is in progress in the playground, it is common courtesy that the student will excuse themselves from the call until the face to face communication is completed.

A full copy of Wingham High School's mobile phone policy can be obtained from the school's website.

**Mobile phones
are OFF and AWAY
during lesson time.**



Personal Property

Students should **never** leave money in school bags. Money and valuables should be carried. Excursions and fees should be paid at the accounts office, **before** school.

Clothing such as caps and tops should be labelled. Calculators need to be permanently engraved on the case and both parts of the plastic cover.

If a student loses something, they should check at Student Services and the Deputy Principals. If a student finds something, it should be left at the office too.

The school can take no responsibility for valuables such as mobile phones, etc. brought to school. During lessons, bags are left outside the classrooms.

Sporting equipment is to be left at the MPC. SRC sporting equipment must be returned to the SRC representative or the science staff room.

School Bags

Health authorities recommend back packs. School bags should be sturdy to avoid damage to the covers and spines of books.

Bikes and Scooters

A bike rack is situated at the front of the school. A rack for scooters is near the lower lift door, under the stairwell. It is advisable to secure bikes and scooters with a chain.

Parents and students are reminded that it is a legal requirement to wear helmets when riding bikes or scooters. Helmets should be engraved with the student's name and parents' licence number to ensure that lost helmets are returned.

Lockers

The P&C and the school have purchased a number of lockers for use by students with disabilities and senior students. The lockers are to be used for storing school books not personal items. There is an annual locker fee. The locker is to be left in a clean, good condition at the end of the year, with the lock in working order. Students seeking the allocation of a locker must apply at Student Services.



Sport

The DoE specifies that sport is compulsory. Regulations specify that exemptions from participation in sport may only be considered on medical grounds. A note from parents is required for absence from sport.

Students with medical problems or special disabilities which may affect participation in sport or PE should present a note of explanation from a parent to Mr Edwards, the sports coordinator.

Students who, for reasons of injury or illness, are exempt from sport, are unable to be supervised at school – parents/carers will be contacted to pick up students who are not prepared for sport participation.

On wet sports days students are supervised indoors.

Sports selections are made at the start of the year. Each student completes a selection sheet which outlines the travel arrangements and costs for each sport. **Travel costs MUST be paid IN FULL prior to sport commencing each term.**

A completed sport selection sheet is to be signed by a parent as acknowledgment of costs involved and as parental permission to participate in the activities associated with the sport.

Students are unable to attend sport until the signed selection sheet is returned.

The finishing time for sport is 2:30pm each Friday.

Students who catch buses are required to remain at school to catch their buses at 3:20pm. All other students are able to go directly home at 2:30pm.

Sport Houses

House meetings are held to elect house captains at the beginning of each year.

Students are allocated to houses alphabetically as follows:

Parkes: green A-C

Oxley: red D-I

Manning: yellow J-N

Macquarie: blue O-Z

Examples of Sports on Offer

Students are able to nominate a sport for each term through a note issued at the start of each year.

- **Agriculture:** Students will be working with cattle to prepare the Wingham High Show team.
- **Cricket:** Played at Central Park with an indoor cricket ball, a modified match of cricket will be played similar to the rules of LastManStands.
- **Fishing:** Students will walk accompanied by staff to Wingham Brush. Students need to provide their own equipment.
- **Futsal:** Also known as indoor soccer, played at the Wingham Sporting Complex.
- **Wingham Gym:** Professional instructors put students through various gym routines at local gyms.
- **Lawn Bowls:** Trained community members teach the game of lawn bowls at the Bowling Club.
- **League Tag/Touch:** Students walk to Central Park and undertake a round-robin competition.
- **Mini Tennis:** In-school competitions of mini tennis.
- **Racquetball:** Suitable for all levels of ability, a great lifelong activity, played at Wingham Sports Complex.
- **School Sports:** Free school based sports. Specifically, basketball, netball, or soccer.
- **Surfing OSSA:** Students interested in surfing for sport do not need any previous experience, but they will need to be proficient swimmers.
- **Swimming:** structured swimming activities conducted at Wingham Pool. Term 4 only due to pool availability.
- **Table Tennis:** In-school competitions of table tennis.
- **Town Tennis:** Competition in teams of four will be in operation.
- **Walk and Talk:** Students walk around various local areas, including Wingham Brush, the WHS Agriculture farm and town vicinity.

Attendance at sport is a compulsory NESA requirement.

Carnival Days and Competitions

The school conducts annual swimming and athletics carnivals. Parents are always welcome to attend these carnivals and to assist with sporting teams. All students **are expected to attend** the swimming and athletics carnivals.

Swimming carnival is early in Term 1.

Athletics carnival: is early in Term 2.

Cross country: is on a sports afternoon early in Term 2.

School sporting teams are involved in interschool and state wide knockout competitions in many sports including hockey, touch football, rugby league, water polo, golf, cricket, basketball, netball, softball, swimming, athletics, tennis, futsal.

Students representing the school in sporting teams are required to wear full sports or school uniform when travelling to and from competitions and carnivals.



Student Wellbeing

Wingham High School is committed to the wellbeing of its students. All staff are responsible for student wellbeing, however, we also have specialist staff such as head teacher wellbeing - Mrs Boyle, wellbeing teacher - Ms Taylor, school counsellor - Mrs Connelly and support teachers - Mrs Smart, Ms Taylor, Mrs Blanch and Mrs Austin who can assist students with specific needs.

Year Advisers

Year Advisers are appointed to supervise students in each year. The role of the year adviser is to provide support and care for students. Specifically, they are responsible for helping new students settle in, counselling students regarding subject choices, academic progress, and general wellbeing and reporting to staff and parents regarding student activities and problems.

Students should not hesitate to see the year adviser when problems arise at school. Parents are also encouraged to contact the year adviser to discuss any aspect of their child's education at Wingham High. Remember, year advisers also have a responsibility to the classes they teach and would appreciate your consideration in ringing the school to arrange an appropriate time for an interview.

Head Teacher Wellbeing

Mrs Jenni Boyle is the school's head teacher wellbeing. In this position, she will be coordinating the school's year advisers and other support personnel within the school to promote positive student and staff relationships, tolerance, and general wellbeing of the members of our school community.

Ms Meg Goodsell is the student wellbeing officer assisting Mrs Boyle

School Counsellor

The school counsellor is Mrs Kellie Connelly. The counsellor services are available to parents, teachers and students in regard to educational and other areas of need which affect students at school. The school counsellor can also offer assistance to students in crisis. Counsellors also have access to professional assistance within the local community including medical and social worker assistance. Referrals to counsellors may be made by parents, any staff and by the students themselves. Our counsellor services are available four days per week and can be contacted through the Student Services.

Anti Racism

Wingham High School has anti-racism contact officers (ARCO's), Ms Kate Taylor and Mr Paul Hunt. All incidents of racism should be reported to Ms Taylor or Mr Hunt who will investigate and recommend a course of action to the Principal.



2022 Year Advisers



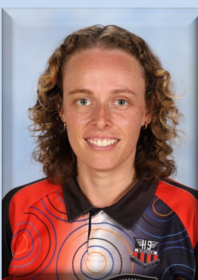
Year 7

Mr Adam Carney
HSIE staffroom
Deputy - Mrs Doust



Year 8

Mr Peter Rollison
Science staffroom
Deputy - Ms Musgrove



Year 9

Ms Joanne Abbott
Maths staffroom
Deputy - Mrs Doust



Year 10

Ms Dheera Smith
English staffroom
Deputy - Ms Musgrove



Year 11

Mr Andrew Edwards
TAS staffroom
Deputy - Mrs Doust



Year 12

Ms Suzanne Brook
Science staffroom
Deputy - Ms Musgrove



Support Services

Students, parents and staff are also advised to access the following support agencies either by phone or online.

Kids Helpline

<http://www.kidshelp.com.au/kids/>
1800 55 1800

Beyond Blue

<http://www.beyondblue.org.au/index.aspx?>

BullyEd

<http://www.bullyed.com.au/>
1300 22 4636

Bullying

Initial Report

- to teacher
- via bullying box
- via email
- from parent
- is it repeated?

Is It Bullying?

- is it intended to hurt?
- is there a power imbalance?
- is it repeated?

Bullying Established

Refer to year group deputy
Establish who? what? when? where? why?

Year Deputy

Interview students involved to establish motivation and level of intent.
Implement appropriate response (discipline, counselling, mediation)
First or subsequent incident to be taken into account.
Contact parent
Enter a SENTRAL report

Victim referred to Head Teacher Wellbeing.

Interview to establish support needs
Referral to year advisers or school counsellor as required. v
Contact parent/carer.
Enter a SENTRAL report

Principal

Action in accord with DoE Policy
Deputy to update SENTRAL records

⇒ Violent incidents follow usual discipline processes

⇒ Repeat incidents or refusal to mediate lead to stronger discipline.

Anti-bullying

Wingham High School is committed to providing a caring and supportive school environment which fosters respectful, responsible and positive behaviour.

We believe that all students and staff have the right to feel safe and secure in their learning environment, that we should all treat each other as we would like to be treated, and that together we can all make a difference. In that context, bullying and harassment of any kind is not tolerated.

Definitions

Bullying is unwelcome and unwanted attention. It is when a person or group exerts power over another person or group by behaviours that have the deliberate aim of causing hurt or distress.

Bullying behaviours involve an imbalance of power where there is an attempt to hurt or exclude others for a range of reasons.

Bullying can include the following behaviours:

- * **teasing** - name-calling, use of put-down comments or insults, threats
- * **gestures** - 'dirty looks' given by bullies to others as an expression of power
- * the setting up of **humiliating** experiences, spreading of rumours
- * **telephone harassment** - repeat calls or texts intending to harass or cause discomfort
- * deliberate **exclusion** from activities
- * **extortion** - giving up possessions, buying food and drink
- * **damage** to the person's property, belongings stolen
- * physical **aggression** - pushing, shoving, poking, tripping, fighting
- * **telling** someone they are a 'dobber' if they report bullying
- * **sending** unwanted or offensive SMS text messages and email
- * use of social media sites such as Facebook and twitter to **threaten, intimidate, embarrass, harass or humiliate.**

Bullying is usually ongoing and deliberate and there is usually an imbalance of size, strength and power between the people involved. The bully might have power not only because he or she is bigger and stronger, but because other students side with the bully often to protect themselves.



The Discipline Level System

As a result of inappropriate behaviour, a student may be placed on one of four levels

Generally, levels 1 and 2 are for faculty-based misbehaviour while level 3 is for whole school misbehaviour or for persistent faculty-based misbehaviours.

Levels 1 and 2 - Faculty

These are faculty based responses to student misbehaviour. The student will have a blue monitoring card completed by their teacher for up to five lessons, complete detentions and their parents will be contacted if the behaviour progresses to level 2.

Level 3 - Whole School

This is a whole school response to persistent or serious misbehaviour. Students on level 3 are required to carry a yellow card for up to 10 school days (rewards apply for excellent behaviour). The student attends a separate STAR roll class until the card and four detentions are completed.

If a student's behaviour continues to cause concern they may be placed on an 'in-school separation' under the supervision of executive staff.

If the student continues to behave in defiance of the core values, it may be necessary to place the student on a special improvement program, suspend or, in extreme cases, expel.

A single behaviour deemed significantly inappropriate can lead to suspension.

Positive School Behaviour

All students at Wingham High School are expected to:

- ◆ respect the rights of students to learn and teachers to teach without disruption
- ◆ attend every school day, unless they are legally excused, and be in class on time and prepared to learn, including proper equipment such as workplace health and safety items and specific subject requirements
- ◆ maintain a neat appearance, including adhering to the requirements of the school's uniform policy
- ◆ behave safely, considerately and responsibly, including when travelling to and from school
- ◆ show respect at all times for teachers, other school staff and helpers, including following class rules, speaking courteously and cooperating with instructions and both learning and assessment activities.
- ◆ treat one another with dignity and respect
- ◆ care for property belonging to themselves, the school and others
- ◆ understand that harassment, bullying and illegal or anti-social behaviour of any kind will not be tolerated
- ◆ wait outside classrooms until teachers arrive - seniors excepted
- ◆ leave all bags (seniors excepted), caps, food and drink outside classrooms
- ◆ remain in their seat or work area unless given permission to move
- ◆ raise their hand before asking questions, giving answers or making comments (unless negotiated with the teacher)
- ◆ have a pass or a note from a teacher if out of class indicating date, time and destination.



Canteen

The canteen is the sole contributor of fundraising to the P&C. Each year students are afforded all types of educational opportunities because of the P&C's financial support. The importance of both the P&C and the canteen cannot be overstated.

As well as the financial benefit to the school, the canteen provides a fantastic range of healthy food all year round, operating a summer and a winter menu.

The canteen is available at recess and lunch every day. It is recommended that students order lunch **before school**. It saves time in the line, and they get the food that they want as some food items are sold out very quickly.

The canteen menu changes for summer and winter. The current menu can be found on the school website:

<https://edit.pws.det.nsw.edu.au/web/wingham-high-school-staging/our-school/canteen-news>

Please note:

There is no ordering lunches in class time.

Volunteers are always needed and most welcome. Judy has many parents and grandparents who give some of their time to be involved in the school canteen.



Student Assistant Scheme

If you feel you need financial assistance for the education of your child under 16. Please collect a form from Student Services or download from the school website.

Payments

All payments required for excursions, visits, concerts, uniforms and equipment are made at Student Services before school, at recess and at lunch.

Parents may make payments at Reception between 8:30am and 3:00pm. A receipt is issued for all payments.

Payments may be made by cash, EFTPOS or online via the school website. The payment page is accessed from the front page of the schools website by selecting: [\\$ Make a payment](#)

Be sure to remind your child against leaving cash and valuables in their school bag.

EFTPOS facilities are available at Student Service, Reception and the canteen.



Money Matters 2022

Accounts are sent out at the beginning of each semester advising parents of voluntary contributions and elective fees.

Fees and Contributions

School Contributions: Years 7 - 10 \$35 per student
Years 11 - 12 \$45 per student

Subject Materials Contributions

Some subjects require contributions to cover the cost of materials and equipment used by students. In subjects where contributions are charged for materials the completed work becomes the property of the student.

Year 7

Technology \$30
Visual Arts \$20

Year 8

Technology \$30
Visual Arts \$20

Year 9

Agriculture \$20
Design and Technology \$60
Food Technology \$70
Automotive \$65
Metal \$65
Engineering \$60
Timber \$65
Graphics \$30
Textiles Technology \$25
Visual Arts \$30

Year 10

Agriculture \$20
Design and Technology \$60
Food Technology \$70
Graphics \$25
Automotive \$65
Engineering \$50
Timber \$65
Metal \$65
Textiles Technology \$25
Visual Arts \$30

Year 11

Construction	\$70
White card course	\$50
Design and Technology	\$50
Engineering Studies	\$40
Food Technology	\$25
Hospitality - Food	\$60
Uniform	\$15
Primary Industries	\$40
Timber	\$50
Metals and Engineering	\$80
Textiles Technology	\$25
Visual Arts	\$35

Year 12

Construction	\$70
Design and Technology	\$25
Engineering Studies	\$40
Food Technology	\$25
Hospitality - Food	\$60
Uniform	\$15
Primary Industries	\$40
Timber	\$25
Metals and Engineering	\$80
Textiles Technology	\$25
Visual Arts	\$35



Uniform

At Wingham High, students are encouraged to take pride in their appearance and grooming. Being neat and well presented is a valuable social skill which are fostered at school. Student uniforms have been approved by the parent body of the school which supports the wearing of correct uniform.

Students have been actively involved in determining the specific nature of their uniforms.

Hats

During summer students should wear a hat to protect the skin from the sun. Unless there is a medical reason, hats or caps should **not** be worn in class. Students should wear a hat for PE lessons and sport.

The following items are *not acceptable*:

- active wear/tights
- black shorts
- board shorts
- denim shorts
- football shorts
- jeans
- items of clothing with obvious brand names
- images promoting drugs or alcohol
- canvas or mesh shoes, thongs and sandals

Uniform stockist

WorkWise Wingham

Isabella St Wingham (near the pedestrian crossing)

Clothing Pool

Uniforms may be purchased from the clothing pool. Enquiries can be made at Student Services or Reception. The student assistance scheme can also help with the purchase of uniforms. An application form is available from Mrs Boyle or download from the Wingham High School website.

Footwear

Work, health and safety require that each workplace is to ensure the health, safety and welfare of staff and employees as enforced by WorkCover.

Wingham High School's policy is to follow the Department of Education policy, i.e. 'To provide staff and students a safe, ordered, secure and caring environment which is conducive to working and learning'.

Therefore, Wingham High School requires that each student participating in a practical class, Industrial Technology, Visual Arts, Science, Agriculture, PDHPE must be equipped with safety equipment:

- **appropriate covered footwear**
- **safety glasses**
- **apron**
- **dust and ear protection**

Wingham High School makes available, at minimum cost, a work, health and safety pack available for purchase from the school canteen.

Colours

Years 7 – 10	Years 11 - 12
Navy from the waist down. <i>(i.e.: Navy – shorts, long pants, skirt)</i>	Navy from the waist down. <i>(i.e.: Navy - shorts, long pants, skirt)</i>
Navy collared/polo shirt with red detail (see photo) OR straight Navy polo	White - collared button up/or polo shirt
Navy jumper (see photo)	Navy jumper (see photo)



Years 7-10

Years 11-12

All Years

Due to **work, health and safety regulations** from the **NSW Department of Education** the wearing of appropriate, protective footwear is a mandatory requirement for participation in all **practical lessons**.

Appropriate Footwear includes: Strong, leather shoes which covers the entire foot.

Leather school



Leather joggers



Leather Skate



Inappropriate Footwear: Shoes which do not protect the foot.



Leather shoes which do not cover the top of the shoe



Fabric joggers



All canvas shoes



Ballet Shoes



Thongs

Bus Routes

Wingham Buslines

<https://www.buslinesgroup.com.au/wingham>

Bus route	No.
McQueen's Bridge/Rocks Crossing (Billygoat)	51
Killabakh (Racoon)	52
Mooral Creek (Toucan)	53
Kimbriki (Ostrich)	54
Yarrat/Young's Rd (Peacock)	55
Bootawa (Turkey)	57
Bungay Rd/Town Service (Dragonfly)	58
Caparra (Fox)	59
Marlee/Bobin/Elands (Dinosaur)	61

Eggin's Comfort Coaches

<https://eggin.comfortcoaches.com.au/>

Eggin's provides a single bus that does two runs in the morning and two runs in the afternoon. The morning run commences in Old Bar and arrives at school via Wingham town and then returns to Taree.

In the afternoon the bus collects at Wingham High School twice, doing a Wingham town run initially then returning to collect students for Wingham Rd, Taree, collecting at Taree High School and completing its run in Old Bar.

Tinonee Bus Company

<http://www.tinoneebusco.com.au/>

Tinonee Bus Company has three runs that either culminate at Wingham High School or link up with other buses or bus companies such as **Wingham Buslines** that bring students to Wingham High School.

The bus interchanges are:

- Burrell Creek Hall (Krambach and Kimbriki)
- Tinonee Public School (Hillville and Krambach)



Community Links

Wingham High School is proud of its involvement with and contributions to the broader Manning Valley communities. We are sincerely thankful for the support we receive in return.

Our involvement include:

- ANZAC day dawn service and march
- Battle for Australia ceremony
- Remembrance ceremony
- Beef Week
- PSSA sports carnivals coaching and refereeing
- Volunteering at aged care homes
- Environmental protection
- International Student Exchange
- Rural Fire Service Wingham Branch

Community groups and businesses who are major supporters of Wingham High School include:

- Wingham Beef Exports
- Wingham Beef Week
- Wingham Buslines
- Wingham Chamber of Commerce
- Wingham Court Aged Care
- Wingham Rotary
- Wingham Services Club

We also have many individual volunteers who support the school in a variety of ways including:

- Working on the agriculture farm
- Driving the Wingham High School bus
- Assisting in the canteen
- Assisting with performances - set and costume production

If you would like to become one of the many valued Wingham High School volunteers or supporters please do not hesitate to contact the school on 6553 5488.



Who's who at Wingham High 2022



Principal
Mr Paul Ivers



Deputy Principal
Mrs Mary Doust
Years 7, 9, 11



Deputy Principal
Ms Monique Musgrove
Years 8, 10, 12



Head Teacher Administration, Career Adviser
Mrs Shirley Clissold



Administration Manager
Mrs Dianne Clarke

School Administration and Support

Mrs Tiffany Hughes - Reception
Mrs Michelle Gaudron - Attendance
Mrs Maree Gilbert - Science
Mrs Tara Hawksford - Hospitality
Mrs Kerri Louis - Library, Enrolments
Mrs Karen McMaster - Accounts
Ms Vicki Woodford - Reception

Mr Greg Gilbert - General Assistant
Mrs Judy Fowler - Canteen Manager
Mr Reg Brood - Farm Assistant



English, Drama, Language

Mr Brett Sedgwick - Head Teacher
Mrs Jenni Boyle
Ms Rebecca Graham
Mr Paul Hunt
Mr Darko Jovanovic
Ms Rachel Lattimore
Ms Anne Thornton
Ms Dheera Smith - Year 10 Adviser



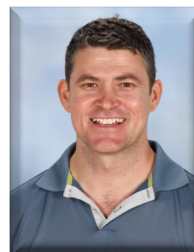
Mathematics

Mr Mick Wright - Head Teacher
Ms Joanne Abbott - Year 9 Adviser
Mr Gerardo Aguirre
Mrs Lynne Colvin
Ms Brooke Fishenden



Science, Agriculture

Mr John Hawkins - Head Teacher
Ms Suzanne Brook - Year 12 Adviser
Mrs Karlyn Hawkins
Mr Peter Rollison - Year 8 Adviser



History and Social Science (HSIE)

Mr Kurt Croker - Head Teacher
Mr Adam Carney - Year 7 Adviser
Mr Paul Davy
Mrs May Gillogly
Mr Steve Harrell
Mr Dean Whitlam
Mr Brian Byrne Librarian



Technology and Applied Studies (TAS)

Mr Damien Keen - Head Teacher
Mr Andrew Edwards - Year 11 Adviser
Mr David Lewers
Ms Julie Leslie - SRC Coordinator
Mrs Beth Ripley
Computing
Ms Alison Spooner



Creative and Performing Arts (CAPA)

Mrs Kat Brown - Head Teacher
Ms Rachel Bloomfield
Mrs Stacey Harrell - SRC Coordinator
Mrs Numia Meaney

PDHPE

Mrs Kat Brown - Head Teacher
Mr Gavin Austin
Mrs Carissa Black
Mr Murray Doust
Mrs Jane Ferguson
Mr Simon Mooney



Learning Support/Wellbeing

Mrs Jenni Boyle - Head Teacher
Mrs Nicole Austin
Mrs Annette Blanch
Mrs Karen Smart
Ms Kate Taylor
School Counsellor
Mrs Kellie Connelly
Student Support Officer
Ms Meg Goodsell

Learning and Support Officers

Mr David Bonanno
Mrs Helen Cross
Mr Jeff French
Amanda Marshall
Tara McCarthy
Mrs Anne Osborn
Mrs Donna White - Job Coach/Promotions Officer
Aboriginal Education Worker
Mrs Kelly Holden



GENERAL EQUIPMENT REQUIREMENTS FOR SUBJECTS

**Pens - blue, black & red
Glue stick / Eraser**

**USB stick or External HD
Pencils-HB**

**Scissors
Pencil Case**

**Ruler
Calculator**

***APPROPRIATE SHOES:** Due to Health & Safety requirements from the Department of Education the wearing of appropriate protective footwear is a **MANDATORY REQUIREMENT** for participation in **all practical subjects**. Appropriate footwear includes strong leather shoes that cover the entire foot.

SUBJECT

BOOKS

OTHER EQUIPMENT

ENGLISH		
ALL YEARS	196pg, A4 Binder book	
MATHEMATICS		
ALL YEARS	196pg, A4 Grid Book, Geometry set, Scientific calculator (Casio fx-82AU Plus)	
SCIENCE		
Years 7-10	160pg, A4 Binder book	Calculator
Years 11&12		
Biology	160pg, A4 Binder x2	Calculator
Chemistry	160pg, A4 Binder x2	Calculator
Marine Studies	160pg, A4 Binder x2	Calculator
Physics	160pg, A4 Binder x2	Calculator
Years 9&10 Electives		
Marine Technology	A4 Binder book	Calculator
Agriculture		
Years 9&10 Elective	160pg, A4 Binder	Calculator
Years 11&12		
Agriculture	160pg, A4 Binder	
Primary Industries	160pg, A4 Binder	
HSIE <i>All Years: A Protractor which is available in the Geometry set required in Mathematics.</i>		
Geography Years 7-10	128pg, A4 Book	
Years 9&10 Geography (Elective)	128pg, A4 Book	
Years 11&12		
Geography	160pg, A4 Binder Book	
Legal Studies	160pg, A4 Binder Book	
Business Studies	160pg, A4 Binder Book	
Economics	160pg, A4 Binder Book	
History		
History Years 7-10	128pg, A4 Book	
Years 9&10 History Exposed (Elective)	128pg, A4 Binder book	
Years 11&12		
Ancient History		
Modern History	160pg, A4 Binder book	
Extension History	128pg, A4 Binder book	
LOTE		
Years 7 Mandatory Language	128pg, A4 Binder book	

PDHPE		
Years 9&10		
Physical Activity & Sports Studies (PASS)	96pg, A4 Binder book	
Child Studies	96pg, A4 Binder book	
Years 11&12		
Community & Family Studies (CAFs)	128pg, A4 Binder book	
Sport, Lifestyle & Recreation (SLR)	128pg, A4 Binder book	
Technology & Applied Studies (TAS)		
Years 7&8 Mandatory Technology	2 X A4 Display Folders, 20pg, Appropriate shoes*; Apron; HB Pencils; Job Bag	
Years 9&10 Electives		
Metal	A4 Display Folder	Apron; HB Pencils; Appropriate shoes*;
Timber	A4 Display Folder	
Design & Technology	A4 Display Folder	
Automotive	A4 Display Folder	
Graphics		2H pencils; Coloured pencils
Food Technology	A4 Display Folder	Apron; Appropriate shoes*; Hair tie
Textiles	A3 & A4 Display Folder	
Years 11&12		
Industrial Technology - Timber	A3 & A4 Display Folder	Apron; Appropriate shoes*
Metals & Engineering	A4 Display Folder	Apron; Appropriate shoes*
Design & Technology	A4 Display Folder	Apron; Appropriate shoes*
Construction	A4 Display Folder	A4 lever arch Folder; Apron, Work boots
Hospitality	Several A4 folders	Apron; Appropriate shoes*
Textiles & Design	Several A4 folders	Apron; Appropriate shoes*
Years 9&10 Electives		
Drama	A4 Binder Book (log book)	
Music	A4 Binder book; Display Folder	
Visual Art	A4 Visual Art Diary; A4 Display Folder	#6 Roymac brush; 2B pencil; soft eraser
Years 11&12		
Drama	A4 Binder Book (log book)	Or lever arch folder
Music	A4 Binder book; Display Folder	
Visual Art	A3 Visual Art Diary	