



agricover.com 866-630-8726



'09

AUTOMOTIVE CATALOG



agricover.com 866-630-8726

Table of Contents

Roll-Up Covers

Increased Capacity Roll-Up Covers

- 8-9.....*Access® Cover* 
- 10-11.....*Limited Edition* 
- 12-13.....*Toolbox Edition* 
- 14-15.....*Access® Cover & Rack* 
- 16-17.....*LiteRider® Cover* 

Low Profile Roll-Up Covers

- 18-19.....*Lorado™ Cover* 
- 20-21.....*Vanish™ Cover* 

Accessory Products

- 22-23... *TrailSeal®/Total Bed Seal* 
- 22-23.....*Storage Pockets* 
- 22-23.....*EZ-Retriever™* 

SnowSport® Plows

SnowSport® Utility Plows

- 34-35.....*HD Utility Plow* 
- 36-37.....*180 Utility Plow* 
- 38-39.....*All Terrain Plow* 

Accessory Products

- 40-41.....*Hold Down Strap* 
- 40-41.....*Hand Cuffs* 
- 40-41.....*ATV Rear Receiver* 
- 40-41...*ATV Receiver Adapter* 



MAKING QUALITY PRODUCTS FOR 28 YEARS

Since 1981, ACI products have had their own distinct advantage, separating them from the competition. Patented and innovative designs, a wide range of special features, ease of operation, and our industry-leading warranties provide years of service and confidence. Our products are unsurpassed in quality and craftsmanship. Look for our distinct features on each product page and see the difference.

For more information, product updates or to become a dealer visit our website at agricover.com or call us toll free at **866-630-8726**.

ACI ROLL-UP COVERS PROTECTION FOR YOUR GEAR

agricover.com

premium cover™
WARRANTY
All ACI Covers include a Premium Cover™ Warranty that warrants all covers to be free from defects in material and workmanship. Our warranty covers all components of the cover, even the fabric!



KNOW THE FACTS

- No need to remove the cover
- Rolls up out of the way, creating 100% bed usage
- Stores compactly behind the cab
- No opening or closing hassles
- No debris catching canister or tracks to clean
- No wear and tear on your paint
- No snaps to hassle with
- All season weather protection

KNOW THE FACTS

- Made model-specific for a perfect fit
- Unobstructed view open or closed
- Compatible with most bed accessories
- Velcro® hook and loop sealing system
- Complements the look of your truck
- Increases gas mileage as much as 10%

ONE PERSON OPERATION



The smooth rolling action makes it easy for one person to quickly roll or unroll. Cover stores neatly behind the cab for quick unrolling when you need it closed. No need to remove the cover.

EASY HAULING



Perfect choice when hauling oversized items such as ATVs, boxes, furniture or anything that extends beyond the height of the truck bed.

TAILGATE OPERATION



No need to open the cover to put smaller cargo in your truck, tailgate is fully operational with the closed cover.

QUICK INSTALLATION



Our simple to follow instructions and pre-assembled components allow for a one person installation in minutes.

INCREASE GAS MILEAGE



Adding a roll-up cover to your truck box can increase your gas mileage by as much as 10%.

4 SEASON PROTECTION



Textured, double coated commercial grade reinforced vinyl remains flexible at -40°, won't shrink in heat and resists fading against the sun.

Roll-Up Cover Benefits

INCREASES GAS MILEAGE

According to many experts, a great way to improve a pickup's fuel economy is to add a roll-up cover. A cover will help reduce aerodynamic drag and can improve gas mileage by as much as 10%.



VISIT WWW.AGRICOVER.COM TO SEE THE PROOF!



2007 SEMA Study

How Tonneau Covers Affect The Coefficient of Drag

According to many industry studies, the best way to improve a truck's fuel economy is to add a tonneau cover to your truck bed. The cover will help reduce aerodynamic drag and can improve gas mileage by as much as 10%. In January 2007, SEMA Research & Information Specialist, Megan McKernan, conducted several tests at the A2 Wind Tunnel of AeroDyne Wind Tunnel, LLC in Mooresville, NC. The following is taken directly from the 2007 study's conclusion.

"The tests showed that all of the tonneaus improved the coefficient of drag for each of the pickups...two of the roll-up vinyl covers did the best, with improvements of 6.5% or more....The most important result to take away from this wind tunnel test is the fact that the covers did reduce drag, which would likely help to improve fuel economy....On average, it is safe to say that a tonneau cover will reduce the coefficient of drag by 5.73%."

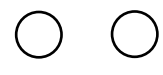
(Source: Specialty Equipment Market Association)

Increase Your Gas Mileage

Save Gas Money With An ACI Roll-Up Cover!

We've taken the hard work out of the equation by providing a few examples of the gas savings you could receive with an ACI Roll-Up Cover. The cover practically pays for itself in no time! Visit our Gas Savings Calculator at www.agricover.com to see how much you'll save today!

Miles Driven/ Month	Gas Mileage	Gas Price	Yearly Savings
1200	15 mpg	\$2.00	\$142.20
1200	15 mpg	\$2.50	\$177.72
1200	15 mpg	\$3.00	\$213.36
1200	15 mpg	\$3.50	\$248.88



ACCESS® ROLL-UP COVER

"This is the first cover I have ever seen that I had no reservations about it's quality or ease of operation. I will tell everyone I can what a great value this bed cover is!"
Daniel M., Parma, OH

ACCESS® COVER

The original Access® Roll-Up Cover has reigned supreme for the past 18 years. It's a superior choice for your truck, can save you up to 10% in gas mileage and the increased capacity design sits 1½" above the truck bed, offering all-season protection for your gear. Fit for your truck, made for your lifestyle, the Access® Roll-Up Cover is durable, stylish, and affordable. It rolls open in seconds, offering you full bed usage and no need for removal. This cover will be with you for the life of your truck and will hold up to anything life may throw your way.

SLANTBACK* REAR DESIGN



Make sure it's the original roll-up cover with our exclusive Slantback Rear Design.
*The Slantback Rear Design is a registered U.S. Trademark of Agri-Cover, Inc.

premium cover™
LIFETIME WARRANTY
Our Premium Cover™ Lifetime Warranty includes all components of the cover, even the fabric!

QUALITY FEATURES OF THE ACCESS® COVER

LATCHING SYSTEM



- The AutoLatch™ automatically locks when cover is closed
- Easy release with the pull of a cord

ADDITIONAL SECURITY



- Patented slide lock offers additional locked protection for your cover
- Push to lock, pull to unlock
- Works with a locked tailgate to give you ultimate protection

TIGHT BITE™ CLAMPS



- Installs in minutes with 8 clamps (Most short boxes receive 6 clamps)
- Specially cut "teeth" maintain a superior grip & exceptional strength

TENSION ADJUSTMENT



- The XT-Dial™ features an easy grip dial
- Perfect tension control
- No tools - no hassle

ELEMENT SEAL™



- Forms a tight barrier between your truck and cover
- Combined with the front and rear reinforced vinyl seal - the cover is sealed on all four sides

SIDE SEALING



- Velcro® hook & loop fastening system provides a high strength seal that runs full length of bed
- Easy one person operation

ACCESS[®]

Limited Edition

“When I discovered the Access Limited Edition, I knew it was what I wanted. For the price and design, I stopped looking at other covers and purchased this one. You’ve got a great product here and the customer service was outstanding.”
 Joe M., Columbus, GA



premium cover™
LIFETIME WARRANTY
 Our Premium Cover™ Lifetime Warranty includes all components of the cover, even the fabric!

LIMITED EDITION

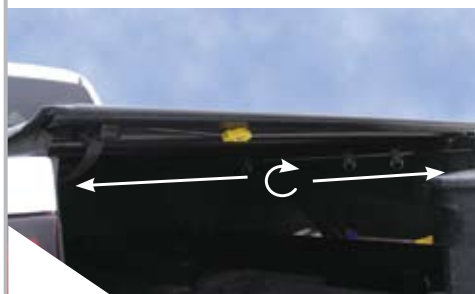
Access[®] Limited Edition is a premium cover for truck owners that insist on the very best in style, quality and luxury. It combines all of the components of the original Access[®] Cover and adds a few luxury features you can't find on any other roll-up cover. It includes the AutoLatch II™ automatic dual locking system, Tight Bite™ Clamps with tie-down rings and TrailSeal[®] Tailgate Gasket. These extra quality components will provide superior performance for years to come. If you want the best soft roll-up cover on the market today, the Limited Cover is for you.

INCREASED CAPACITY COVER



QUALITY FEATURES OF THE LIMITED EDITION

LATCHING SYSTEM



- The AutoLatch™ II features automatic dual locks that release simultaneously with the twist of a dial
- Automatically locks your cover

FABRIC



- Textured, double coated commercial grade reinforced vinyl
- Remains flexible at -40° and won't shrink or fade in the sun
- Built for hot and cold climates

TIE DOWN CLAMPS



- Tie down rings are perfect for securing loads and preventing cargo from shifting
- Installs in minutes

TENSION ADJUSTMENT



- The XT-Dial™ features an easy grip dial
- Perfect tension control
- No tools - no hassle

ELEMENT SEAL™



- Forms a tight barrier between your truck and cover
- Combined with the front and rear reinforced vinyl seal - the cover is sealed on all four sides

TRAILSEAL[®] INCLUDED



- Seals the entire length of your tailgate
- Prevents dust, dirt, rain or snow from entering the tailgate



*"...works great with my toolbox. Now I keep all my tools locked and still keep my bed clean and dry. Works great on those rainy mornings when I need to haul it ms to and from the barn."
Jon Mills - North Dakota*

TOOLBOX EDITION

Access® Toolbox Edition is our original Access® Cover built to fit behind most 20-21" over-the-rail toolboxes. Our increased capacity design means you have additional protected storage in the truck bed without losing entry to your toolbox. The cover operates independently from the toolbox and will not interfere with its operation when loading or unloading items. If you need to get into your toolbox from the truck bed, the cover quickly and easily rolls up and out of the way.

TOOLBOX OPENS INDEPENDENT FROM COVER



premium cover™
LIFETIME WARRANTY
Our Premium Cover™ Lifetime Warranty includes all components of the cover, even the fabric!

QUALITY FEATURES OF THE TOOLBOX EDITION

LATCHING SYSTEM



- The AutoLatch™ automatically locks when cover is closed
- Easy release with the pull of a cord

ADDITIONAL SECURITY



- Patented slide lock offers additional locked protection for your cover
- Push to lock, pull to unlock
- Works with a locked tailgate to give you ultimate protection

TIGHT BITE™ CLAMPS



- Installs in minutes with 8 clamps (Most short boxes receive 6 clamps)
- Specially cut "teeth" maintain a superior grip & exceptional strength

TENSION ADJUSTMENT



- The XT-Dial™ features an easy grip dial
- Perfect tension control
- No tools - no hassle

FRONT HEADER BAR



- Forms a tight barrier between your truck and cover
- Combined with the front and rear reinforced vinyl seal - the cover is sealed on all four sides

SIDE SEALING



- Velcro® hook & loop fastening system provides a high strength seal that runs full length of bed
- Easy one person operation

ACCESS[®]

ROLL-UP COVER & RACK

"I put this cover on in the Texas heat in about 20 minutes and everything went on perfectly. Looks good, a really nice functional design, and I am ready for my road trip next weekend."
 Michael Willett, Texas



premium cover™
3 YEAR WARRANTY
 Our Premium Cover™ 3 Year Warranty includes all components of the cover, even the fabric!

COVER & RACK

The Access® Roll-Up Cover & Rack combines our Access® Cover with a durable over the bed rack to give you increased hauling capacity and additional levels of storage above and below the cover. The heavy-duty aluminum crossbars easily adjust out of the way or can be completely removed in seconds, allowing full use of your truck bed when needed. They are available in high or low clearance and are compatible with a variety of kits and accessories (sold separately). Ideal for recreational or industrial use, this system will let you handle even your toughest job with ease.

INCREASES HAULING CAPACITY



QUALITY FEATURES OF THE COVER & RACK

HEAVY DUTY DESIGN



- Long lasting, high strength extruded aluminum construction
- Perfect for your job site materials during the week and your toys on the weekend

ROLL-UP COVER



- Cover operates independently from the rack system
- Easily reach cargo in the truck bed with the cover rolled up

CROSSBARS



- Crossbars easily move forward or can be removed when not in use
- Compatible with a variety of accessories (sold separately)

HAULING CAPACITY



- Roll-up cover and rack come as one complete package
- Additional levels of storage increase your hauling capacity

HIGH CLEARANCE



- The **High Clearance** system allows for long loads to extend above the top of the cab

LOW CLEARANCE



- The **Low Clearance** system allows for easy ground level loading

LITERIDER®

ROLL-UP COVER



"I used to have a snap cover and the LiteRider was appealing to me because of not having to deal with snaps & storing the bow supports when the cover is rolled up."
 Spencer D., Knoxville, TN

premium cover™
LIFETIME WARRANTY
 Our Premium Cover™ Lifetime Warranty includes all components of the cover, even the fabric!

LITERIDER® COVER

The LiteRider® Roll-Up Cover is ideal for truck owners who place importance on quality but prefer a leaner price. The LiteRider® Cover is built just like the original Access® Cover, with the same durable and functional design but with a few component changes to make it even more affordable. With its high capacity design, this cover is perfect for protecting and securing your outdoor gear from the elements, but can still conveniently roll open and out of the way for loading large items in the truck bed.

SLANTBACK* REAR DESIGN



Make sure it's the original roll-up cover with our exclusive Slantback Rear Design.
*The Slantback Rear Design is a registered U.S. Trademark of Agri-Cover, Inc.

QUALITY FEATURES OF THE LITERIDER® COVER

LATCHING SYSTEM



- The AutoLatch™ automatically locks when cover is closed
- Easy release with the pull of a cord

ADDITIONAL SECURITY



- Patented slide lock offers additional locked protection for your cover
- Push to lock, pull to unlock
- Works with a locked tailgate to give you ultimate protection

TIGHT BITE™ CLAMPS



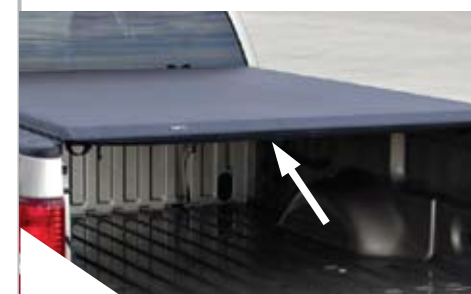
- Installs in minutes with 6 clamps
- Specifically cut 'teeth' maintain a superior grip and exceptional strength

TENSION ADJUSTMENT



- The EZ-Dial™ sets cover tension with the turn of a dial
- No tools required

VINYL SEAL



- Reinforced vinyl seal creates a seal at front and rear of cover
- UV coated vinyl fabric remains flexible at -40° and will not stretch or fade in the sun

STORAGE STRAPS



- The Quick Clip™ storage straps secure your cover compactly behind the cab
- Powerful nylon straps with an ultra strong buckle

LORADO™

ROLL-UP COVER

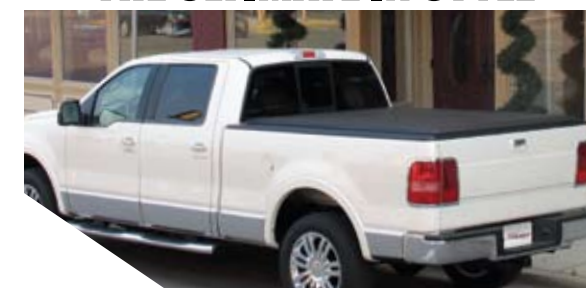
"I purchased a Lorado for my new Ford F-150 pickup. The fit was perfect and I didn't even need to change any adjustments from what the factory set beforehand. It looks great, is easy to roll up, and I look forward to years of trouble free service. All in all a terrific product and worth the money, no question." Gordon C., Tabernacle, NJ



LORADO™ COVER

If you prefer a more streamlined, lower-profile look for your truck, but don't want to sacrifice performance, the Lorado™ Roll-Up Cover is a perfect option. It features all of the same components as our Access® Cover, but with a sleek, low-profile that sits only 1" above the truck bed. It will keep items protected and out of sight in your truck bed, increase gas mileage and give you the look you crave. The Lorado™ Cover combines all of the convenience and benefits of a roll-up cover in a stylish, lower-profile design.

THE ULTIMATE IN STYLE



premium cover™
LIFETIME WARRANTY
 Our Premium Cover™ Lifetime Warranty includes all components of the cover, even the fabric!

QUALITY FEATURES OF THE LORADO™ COVER

LATCHING SYSTEM



- The AutoLatch™ automatically locks when cover is closed
- Easy release with the pull of a cord

ADDITIONAL SECURITY



- Patented slide lock offers additional locked protection for your cover
- Push to lock, pull to unlock
- Works with a locked tailgate to give you ultimate protection

TENSION ADJUSTMENT



- The XT-Dial™ features an easy grip dial
- Perfect tension control
- No tools - no hassle

ELEMENT SEAL™



- Forms a tight barrier between your truck and cover
- Combined with the front and rear reinforced vinyl seal - the cover is sealed on all four sides

SIDE SEALING



- Velcro® hook & loop fastening system provides a high strength seal that runs full length of bed
- Easy one person operation

STORAGE STRAPS



- Our premium straps feature a cab guard design that prevents cover from rubbing on the cab
- Super tough nylon straps secure cover compactly in place

VANISH™

LOW-PROFILE ROLL-UP COVER

"It gives me everything I was looking for - reasonable cost, it doesn't sit too far above the bed, it works with my bed rails, it allows me full access to the bed for hauling and it is extremely easy for one person to operate." Rick G.



VANISH™ COVER

The Vanish™ Cover is a perfect choice for truck owners who want the lowest-profile design at a remarkably low price. Sleek, affordable, and durable, the Vanish™ Cover sits only a half inch above the truck bed and comes with high quality, yet economical components. It will give your truck a smooth, streamlined look while providing you with gas mileage savings and protection for your cargo. The Vanish™ Cover provides you a great roll-up cover at a low price.

COVER SITS ONLY 1/2" ABOVE TRUCK BED



premium cover™
3 YEAR WARRANTY
 Our Premium Cover™ 3 Year Warranty includes all components of the cover, even the fabric!

QUALITY FEATURES OF THE VANISH™ COVER

LATCHING SYSTEM



- The Trigger Latch allows for one finger release to open
- Automatically locks when the cover is closed

ADDITIONAL SECURITY



- 2 patented Slide Locks offer additional locked protection for the cover
- Push to lock, pull to unlock
- Works with a locking tailgate to give you ultimate security

TIGHT BITE™ CLAMPS



- Installs in minutes with 6 clamps
- Specifically cut 'teeth' maintain a superior grip and exceptional strength

TENSION ADJUSTMENT



- The EZ-Dial™ sets cover tension with the turn of a dial
- No tools required

SIDE SEALING SYSTEM



- The reliable sealing system keeps out dirt, rain and snow
- Creates a tighter fitting cover and a quieter ride

STORAGE STRAPS



- Convenient flexible straps
- Large hook opening allows for easy attachment

*"I received the EZ-Retriever as a gift from my wife and must admit it comes in real handy almost every day! I not only use it to pull items out of the truck bed but I also use it to push items to the front so I can fit more in the box without having to try and get in.
Thanks for a great product."
Cole Eiden, Iowa*

Figure 1



TrailSeal® Tailgate Gasket

PN 30946



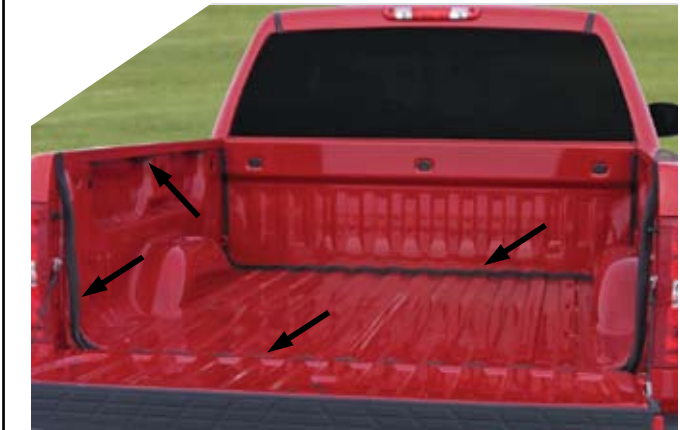
Seals gaps around the perimeter of the tailgate.

Prevents dust, rain and snow from entering through the tailgate.

The tailgate does not tightly seal without TrailSeal®.

TrailSeal® Total Bed Seal

PN 60090



Seals gaps in the box of 07-09 GM/ Chevy truck beds.

Prevents dust, rain and snow from entering the truck bed.

The kit works with tonneaus, toppers and lids.

Storage Pocket G2

**PN 60070
Sold as a Pair**



5" tall, galvanized with a smooth, polished finish.

Creates extra storage from wasted space.

Works with the EZ-Retriever™ to prevent items from sliding to the front of the truck bed. (See Figure 1 above)

Storage Pocket HD

**PN 60085
Sold as a Pair**



6" tall diamond tread aircraft grade aluminum.

Allows full space between wheel wells.

Works with the EZ-Retriever™. (See Figure 1 above)

EZ-Retriever™

PN 50710



Easily grab items that slid to the front of truck bed.

Extends to 5' 9". Easily adjusts to the perfect length for any size bed.

Can also be used to keep cargo at the rear of the truck bed. (See Figure 1 above)

2009 Roll-Up Cover Specifications



	ACCESS®	LIMITED EDITION	TOOLBOX EDITION	LORADO™
Frame	All Black Rails, Bars and Bows	All Black Rails, Bars and Bows	All Black Rails, Bars and Bows	All Black Rails, Bars and Bows
Tension Control	XT-Dial™	XT-Dial™	XT-Dial™	XT-Dial™
Hook and Loop Sealing System	Velcro®	Velcro®	Velcro®	Velcro®
Installation	8 Clamps (Most short boxes receive 6 clamps)	8 Tie-Down Clamps (Most short boxes receive 6 clamps)	8 Clamps (Most short boxes receive 6 clamps)	8 Clamps (Most short boxes receive 6 clamps)
Locking System	AutoLatch™ with 1 Slide Lock	AutoLatch II™ with Automatic Dual Locking System	AutoLatch™ with 1 Slide Lock	AutoLatch™ with 1 Slide Lock
Storage Straps	Premium Storage Straps	Premium Storage Straps	Premium Storage Straps	Premium Storage Straps
Front Header Seal	Element Seal™ & Fabric Guard	Element Seal™ & Fabric Guard	Element Seal™ & Fabric Guard	Element Seal™ & Fabric Guard
TrailSeal®	Sold Separately	Included	Sold Separately	Sold Separately
Fabric	Reinforced polyester mesh, coated with UV protected vinyl	Reinforced polyester mesh, coated with UV protected vinyl	Reinforced polyester mesh, coated with UV protected vinyl	Reinforced polyester mesh, coated with UV protected vinyl
Warranty	Premium Cover™ Lifetime Warranty	Premium Cover™ Lifetime Warranty	Premium Cover™ Lifetime Warranty	Premium Cover™ Lifetime Warranty
Rear Bar	Slantback Rear Design*	Slantback Rear Design*	Slantback Rear Design*	Slantback Rear Design*
Cover Height Above Box	1 1/2"	1 1/2"	1 1/2"	1"

	LITERIDER®	VANISH™	HIGH RACK	LOW RACK
	Black Rails and Bars Silver Bows	Black Rails and Bars Silver Bows	All Black Rails, Bars and Bows	All Black Rails, Bars and Bows
	EZ-Dial™	EZ-Dial™	XT-Dial™	XT-Dial™
	Velcro®	Velcro®	Velcro®	Velcro®
	6 Clamps	6 Clamps	8 Clamps	8 Clamps
	AutoLatch™ with 1 Slide Lock	Trigger Latch with 2 Slide Locks	AutoLatch™ with 1 Slide Lock	AutoLatch™ with 1 Slide Lock
	Quick Clip™ Storage Straps	Elastic Storage Straps	Premium Storage Straps	Premium Storage Straps
	Fabric Guard	Fabric Guard	Element Seal™ & Fabric Guard	Element Seal™ & Fabric Guard
	Sold Separately	Sold Separately	Sold Separately	Sold Separately
	Reinforced polyester mesh, coated with UV protected vinyl	Reinforced polyester mesh, coated with UV protected vinyl	Reinforced polyester mesh, coated with UV protected vinyl	Reinforced polyester mesh, coated with UV protected vinyl
	Premium Cover™ Lifetime Warranty	Premium Cover™ 3 Year Warranty	Premium Cover™ 3 Year Warranty	Premium Cover™ 3 Year Warranty
	Slantback Rear Design*	Flat Rear Bar	Slantback Rear Design*	Slantback Rear Design*
	1 1/2"	1/2"	1 1/2"	1 1/2"

*The Slantback Rear Design is a trademark of Agri-Cover, Inc.

ACCESS, LITERIDER, and TRAILSEAL are registered United States trademarks of AGRI-COVER, INC. U.S. Patent Nos. 5,076,338; 5,174,353; 6,543,835; 6,672,644; 6,851,738; 7,048,227; 7,008,000; 7,104,586; 7,066,524; 6,474,654; 6,773,019; 6,959,848 and other patents pending. SNOWSPORT is a registered United States trademark of AGRI-COVER, INC. U.S. Patent No. 6,817,118 and other patents pending. Patent pending on ACCESS Storage Pocket. © Copyright 2009 AGRI-COVER, INC. ALL RIGHTS RESERVED. Products and prices in this catalog may vary and are subject to change without notice.

VELCRO® is a registered trademark of the Velcro® companies B.V.

2009 Roll-Up Cover Applications

Year	Make/Model	Part #	Part #	Part #	Part #	Part #	Part #
CHEVY / GMC		Access [®]	Lorado [™]	LiteRider [®]	Vanish [™]	Low Rack	High Rack
07-09	Chev/GMC NewBody Full Size 5'8" Bed with or without cargo rails	12309*	42309	32309	92309	20020309	21020309
07-09	Chev/GMC NewBody Full Size 6'6" Bed with or without cargo rails	12289*+	42289	32289	92289	20020289	21020289
04-07	Chev/GMC Classic Full Size 5'8" Bed	12269*	42269	32269	92269	20020269	21020269
99-07	Chev/GMC Classic Full Size 6'6" Bed	12199*+	42199	32199	92199	20020199	21020199
01-05	Chev/GMC Composite Short Bed (Bolt On)	12219*	42219	32219	92219	-----	-----
99-06	Chev/GMC Full Size Stepside Box (Bolt On)	12209*	42209	32209	92209	-----	-----
88-00	Chev/GMC Full Size 6'6" Bed	12129*+	42129	32129	92129	20020129	21020129
88-98	Chev/GMC Full Size Stepside Box (Bolt On)	12139*	42139	32139	92139	-----	-----
73-87	Chev/GMC Full Size Short Bed	12029	42029	32029	92029	-----	-----
07-09	Chev/GMC NewBody Full Size 8' (Includes Dually) with or without cargo rails	12299*+	42299	32299	92299	20020299	21020299
99-07	Chev/GMC Classic Full Size 8' Bed (Except Dually)	12189*+	42189	32189	92189	20020189	21020189
01-07	Chev/GMC Classic Dually 8' Bed	12229*	42229	32229	92229	20020229	21020229
88-00	Chev/GMC Full Size 8' Bed & 88-00 Dually)	12119*+	42119	32119	92119	20020119	21020119
73-87	Chev/GMC Full Size 8' Bed	12019	42019	32019	92019	-----	-----
04-09	Chev/GMC Colorado/Canyon Crew Cab 5' Bed	12249*	42249	32249	92249	20020249	21020249
04-09	Chev/GMC Colorado/Canyon Reg & Ext. Cab 6' Bed	12259*	42259	32259	92259	20020259	21020259
01-04	Chev/GMC S-10/Sonoma Crew Cab (4 Dr.)	12149*	42149	32149	92149	-----	-----
94-03	Chev/GMC S-10/Sonoma Long Bed (and Isuzu 96-03)	12159*	42159	32159	92159	-----	-----
94-03	Chev/GMC S-10/Sonoma Short Bed (and Isuzu 96-03)	12169*	42169	32169	92169	20020169	21020169
96-03	Chev/GMC S-10/Sonoma Stepside Box	12179*	42179	32179	92179	-----	-----
DODGE							
2009	Dodge Ram 1500 CrewCab 5' 7" Bed with RamBox	14199*	-----	34199	-----	-----	-----
2009	Dodge Ram 1500 CrewCab 5' 7" Bed without RamBox	14169*	44169	34169	94169	20040169	21040169
2009	Dodge Ram 1500 Quad Cab & Reg Cab 6'4" Bed	14179*+	44179	34179	94179	20040179	21040179
06-09	Dodge Mega Cab & 02-08 Ram 1500 Short Bed	14139*+	44139	34139	94139	20040139	21040139
03-09	Dodge Ram 2500/3500 Short Bed	14139*+	44139	34139	94139	20040139	21040139
94-01	Dodge Ram All Short Bed & 2002 Ram 2500/3500 Short Bed	14119*+	44119	34119	94119	20040119	21040119
2009	Dodge Ram 1500 Quad Cab & Reg Cab 8' Bed	14189*+	44189	34189	94189	20040189	21040189
02-08	Dodge 1500 Lg Bed (Except Mega Cab)	14129*+	44129	34129	94129	20040129	21040129
03-09	Dodge 2500/3500 Lg Bed (Except Mega Cab)	14129*+	44129	34129	94129	20040129	21040129
94-01	Dodge Ram All Long Bed & 2002 Ram 2500/3500 Long Bed	14109*+	44109	34109	94109	20040109	21040109
82-93	Dodge Long Bed	14089*	44089	34089	94089	-----	-----
05-09	Dodge Dakota Short Bed w/o utility rail	14159*	44159	34159	94159	20040159	21040159
00-09	Dodge Dakota Quad/CrewCab 5'4" bed w/o utility rail	14149*	44149	34149	94149	20040149	21040149
08-09	Dodge Dakota CrewCab 5'4" bed with utility rail	14209*	44209	34209	-----	-----	-----
87-04	Dodge Dakota Short Bed	14079*	44079	34079	94079	20040079	21040079
FORD / LINCOLN							
04-09	Ford F150 5.5' Bed (Except Heritage) & 06-09 Lincoln Mark LT 5.5' Bed	11269*	41269	31269	91269	20010269	21010269
04-09	Ford F150 6.5' Bed (Except Heritage) & 07-09 Lincoln Mark LT 6.5' Bed	11279*+	41279	31279	91279	20010279	21010279
04-09	Ford F150 Flareside Box (Except Heritage)	11299*	-----	31299	-----	-----	-----
01-03	Ford F150 Super Crew & 2004 Super Crew Heritage	11249*	-----	31249	-----	-----	-----
08-09	Ford Super Duty 250, 350, 450 Short Bed	11339*+	41339	31339	91339	20010339	21010339
99-07	Ford Super Duty Short Bed	11319*+	41319	31319	91319	20010319	21010319
97-03	F150, 04 F150 Heritage, 98-99 New Body F250 Lt Duty Short Bed	11229*+	41229	31229	91229	20010229	21010229
97-03	Ford F150 Flareside Box & 04 Heritage	11239*	-----	31239	-----	-----	-----
73-98	Ford Full Size Old Body Short Bed	11029*	41029	31029	91029	-----	-----
08-09	Ford Super Duty 250, 350, 450 Long Bed	11349*+	41349	31349	91349	20010349	21010349

Year	Make/Model	Part #	Part #	Part #	Part #	Part #	Part #
FORD/LINCOLN CONT.		Access [®]	Lorado [™]	LiteRider [®]	Vanish [™]	Low Rack	High Rack
04-09	Ford F150 Long Bed (Except Heritage)	11289*+	41289	31289	91289	20010289	21010289
99-07	Ford Super Duty Long Bed	11309*+	41309	31309	91309	20010309	21010309
97-03	Ford F150 Long Bed & 04 Heritage	11219*+	41219	31219	91219	-----	-----
73-98	Ford Full Size Old Body Long Bed	11019*+	41019	31019	91019	-----	-----
07-09	Ford Explorer Sport Trac (4 Dr) (Bolt On-No drill)	11329*	41329	31329	91329	-----	-----
01-06	Ford Explorer Sport Trac (4 Dr) (Bolt On-No Drill)	11129*	-----	31129	-----	-----	-----
99-08	Ford Ranger Flareside Box	11139*	41139	31139	91139	20010139	21010139
93-98	Ford Ranger Flareside Box	11119*	41119	31119	91119	-----	-----
82-09	Ford Ranger Long Bed	11099*	41099	31099	91099	20010099	21010099
82-09	Ford Ranger Short Bed	11109*	41109	31109	91109	20010109	21010109
TOYOTA							
07-09	Toyota Tundra 5.5' Bed Without Deck Rail	15209*	45209	35209	95209	20050209	21050209
07-09	Toyota Tundra 5.5' Bed With Deck Rail	15239*	45239	35239	95239	20050239	21050239
07-09	Toyota Tundra 6.5' Bed Without Deck Rail	15219*+	45219	35219	95219	20050219	21050219
07-09	Toyota Tundra 6.5' Bed With Deck Rail	15249*+	45249	35249	95249	20050249	21050249
04-06	Toyota Tundra Double Cab	15169*	45169	35169	95169	20050169	21050169
00-06	Toyota Tundra Short Bed (Fits T-100 Short Bed)	15089*	45089	35089	95089	20050089	21050089
03-06	Toyota Tundra Stepside Box (Bolt On)	15159	-----	35159	-----	-----	-----
07-09	Toyota Tundra 8' Bed Without Deck Rail	15229*+	45229	35229	95229	20050229	21050229
07-09	Toyota Tundra 8' Bed With Deck Rail	15259*+	45259	35259	95259	20050259	21050259
05-09	Toyota Tacoma Double Cab Short Bed	15189*	45189	35189	95189	-----	-----
00-06	Toyota Tundra Long Bed (Fits T-100 Long Bed)	15119*	45119	35119	95119	20050119	21050119
05-09	Toyota Tacoma Long Bed	15179*	45179	35179	95179	-----	-----
01-04	Toyota Tacoma Double Cab	15049*	-----	35049	-----	-----	-----
01-04	Toyota Tacoma Stepside Box	15029*	-----	35029	-----	-----	-----
95-04	Toyota Tacoma Short Bed (Also 89-94 Short Bed)	15069*	-----	35069	-----	-----	-----
NISSAN							
04-09	Nissan Titan CrewCab 5' 7" bed clamps on with or w/o Utili-track	13159*	43159	33159	93159	20030159	21030159
04-09	Nissan Titan KingCab 6' 7" bed clamps on with or w/o Utili-track	13169*	43169	33169	93169	20030169	21030169
04-08	Nissan Titan OEM (Telescopic) Sliding Bed Ext. Adapter Kit Available	30298*	30298	30298	-----	-----	-----
08-09	Nissan Titan CrewCab LongBed 7' 3" clamps on with or w/o Utili-track	13199*	43199	33199	93199	20030199	21030199
08-09	Nissan Titan KingCab LongBed 8' 2" clamps on with or w/o Utili-track	13209*	43209	33209	93209	20030209	21030209
05-09	Nissan Frontier Crew Cab Short Bed clamps on with or w/o Utili-track	13179*	43179	33179	93179	20030179	21030179
05-09	Nissan Frontier KingCab & Crew Cab Lg Bed clamps on with or w/o Utili-track	13189*	43189	33189	93189	20030189	21030189
05-08	Nissan Frontier OEM (Telescopic) Sliding Bed Ext. Adapter Kit Available	40575*	40575	40575	-----	-----	-----
02-04	Nissan Frontier CrewCab Long Bed & 98-04 KingCab	13129*	43129	33129	93129	-----	-----
00-04	Nissan Frontier Crew Cab Short Bed	13149*	43149	33149	93149	-----	-----
HONDA/MAZDA / MITSUBISHI / ISUZU							
06-09	Honda Ridgeline (4 Door)	16019	-----	-----	-----	-----	-----
94-09	Mazda Long Bed	11099*	41099	31099	91099	20010099	21010099
94-09	Mazda Short Bed	11109*	41109	31109	91109	20010109	21010109
06-09	Mitsubishi Raider Double Cab	14149*	44149	34149	94149	20040149	21040149
06-09	Mitsubishi Raider Extended Cab	14159*	44159	34159	94159	20040159	21040159
06-09	Isuzu I-280, I-290, I-370 Extended Cab 6 ft Bed	12259*	42259	32259	92259	20020259	21020259
06-09	Isuzu I-350, I-370 Crew Cab 5 ft Bed	12249*	42249	32249	92249	20020249	21020249

* Limited Edition Available + Toolbox Edition Available

* Limited Edition Available + Toolbox Edition Available

"We sell the Agri-Cover bed covers because they are great products. They are easy to sell, they have very few warranty issues, have a good price point, but most of all, they fit the truck so beautifully. Each cover is a perfect fit and easy to install! Also the good folks at Agri-Cover customer service are a joy to work with! I highly recommend Agri-Cover as your source for bed covers."

Mark Goodsell
Goodsell Truck Accessories
Jacksonville, Arkansas



"As you can see even after 8 or 9 years the cover on the blue pickup is still providing the service for which it was intended, protecting the survey equipment which I use everyday. The pickup has 250,000 miles and I couldn't guess how many times the cover has been rolled up. The one on the white pickup is 4 years old and as you can see by the dirt and dust on the cover, it does a great job of keeping it off of the equipment (which have just come in from a construction project).

I am very satisfied with the years of service both of these covers have provided and would recommend them to anyone who wants the full use of their pickup box, and still wants to protect their luggage or equipment."

Rod Westrum, RLS
Westrum's Land Surveying
Western North Dakota



Our Best Salesmen Are Our Customers

"Well, I just used my SnowSport 60" plow mounted to my 2006 Kawasaki Mule 610 for the first time, and I must tell you how pleased I am. New Hampshire is Fisher Plow country, and I have owned several on full size and compact trucks - but the ease and maneuverability of the Snow-Sport is amazing. My first test was 10" of medium weight snow, and I was able to push 100+ feet of snow at a time with no problems."

John K. - New Hampshire

"I purchased my Access cover about 2 years ago, it is by far the best cover I have seen. During the winter here in Michigan it holds the weight of the snow without giving way at all. The best part that I have found is that during the middle of winter when it's only 5 or 10 degrees, I can still roll up the cover to get access to the bed, then roll it back down and it seals flawlessly. If you're thinking about getting a cover, their warranty should be enough to convince you to go with the Access cover. It's absolutely the best I have seen. Thanks for a great product!"

Adam B. - Michigan

"Just had to email and say that after 3 yrs, the plow is going strong. I thought I had seen it all until this last snowstorm of the winter that dropped 12" of heavy, wet snow. I was amazed that even as the snow piled up above the hood of my Jeep, the plow kept going. I had my 500 ft. driveway cleared in 20 minutes and went to plow out the neighbors. It has been one of the best investments I have ever made, it has already paid for itself, and I never have to wait for a hired plow to clear my driveway."

Paul O'Hearn
Hartford, Wisconsin



"The Access cover has proven itself over and over. After 97,000 miles and 4 years worth of use, I transferred my Access cover from the 2003 pickup to the 2007 pickup that I just got. The cover still works and looks like new and it keeps everything dry and out of the elements. We store a lot of equipment in the back so it is important to us that it be protected."

Chad K. - Stutsman County Sheriff
Jamestown, North Dakota



ACI Dealer Support Information

DEALER DISPLAYS

Contact us at 1-866-630-8726 for even more sales support materials.



CATALOGS
ACI full size #50230
ACI mini #50121



**EZ-RETRIEVER™
9-PACK POP**
#50990



PRODUCT DVD
Includes: Access®, Lorado™,
LiteRider®, SnowSport® &
TrailSeal® #20951



BROCHURES
Access® #50210
Lorado™ #50204
LiteRider® #50267
Vanish™ #50202
Access® Rack #50137
SnowSport® HD #50154
SnowSport® 180 #50329
SnowSport® All Terrain #50295
Jobber Booklet #50231



FLOOR DISPLAY
(Includes header card)
Access® #30884
Lorado™ #40555
LiteRider® #30878
Vanish™ #50700

TABLETOP DISPLAY (not shown)
(does not include header card)
Access® #30695
Lorado™ #40556
LiteRider® #30877
Vanish™ #99019

**REPLACEMENT
HEADER CARDS**
Access® #30609
Lorado™ #50205
LiteRider® #50264
Vanish™ #50203



COUNTERTOP MATS
(ROLL-UP COVER AND SNOWSPORT AVAILABLE)
While Supplies Last



PRODUCT BANNER 2' X 4'
All Product Tonneau #50325
Access® #50247
Lorado™ #50223
Vanish™ #50142
SnowSport® #50165

TRAILSEAL® DISPLAY HOOK
#50452

NATIONAL ADVERTISING

ACI advertises in major Jobber Publications such as Light Truck and SUV, Trucking Times, and Consumer Publications such as Motor Trend, Popular Mechanics and Car & Driver.



WWW.AGRICOVER.COM

Our exciting new website is loaded with valuable product information including our popular "How it Operates" video, installation videos/manuals, application guides, image gallery and an easy to use dealer locator.

Your Online Resource Center



DEALER SUPPORT SERVICES DEPT.

Our knowledgeable Dealer Support Service Representatives are here to help. Whether you need assistance with a return, have an installation question, or would like to place an order, our team of friendly and professional representatives can assist you.

Monday - Friday
7:30 a.m. - 5:30 p.m. (CST)
1-866-630-8726

GOLD STAR PROGRAM

ACI
Gold Star
Certified Dealer

Be part of a winning team. We have thousands of Certified Gold Star Dealers across North America that will ensure you receive the highest quality service.

ACI
Gold Star
Certified Dealer

If you are interested in becoming a Certified Gold Star Dealer please contact us toll free at 1-866-630-8726 ext 137.

3 DISTINCT MODELS TO CHOOSE FROM

mysnowsport.com



KNOW THE FACTS

Lightweight design eliminates wear and tear on your vehicle • Easy storage between snowfalls or during off season • Works great on concrete, brick, black top, gravel or grass surfaces • Three year warranty • No electric or hydraulic components to freeze, malfunction or wear out • Made model specific for your application and comes as a

KNOW THE FACTS

complete package • Simple bolt-on install, mounts in minutes • Unique push frame allows snow to be stacked higher than the hood of your truck • Plow pays for itself

TURF FRIENDLY



Built in trip edge won't scratch concrete, brick or black top, tear up grass surfaces or remove gravel.

NO EXTRA LIGHTS



The practical design does not block headlights in plow or transport position.

EASILY LIFTED



Our plows are easily lifted by one person. Lower the blade, plow until finished then lift the blade back to transport position.

RUST RESISTANT BLADE



Heavy duty, corrosion-resistant, anodized aluminum blade repels rust, so it never needs painting.

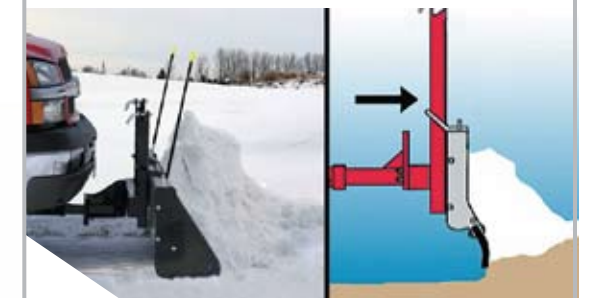
HOW IT OPERATES

LIFT BLADE



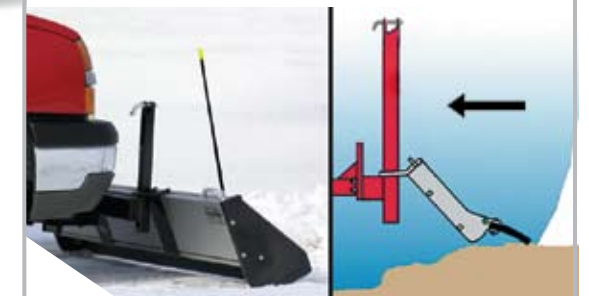
To begin plowing, remove pin, lift blade one end at a time and lower it over push frame, then replace the pin.

DRIVE FORWARD



The blade is guided by a push frame that allows it to slide up and down with the grade of the terrain.

BACK UP



When backing up, the blade lies back, skimming over the ground. When driving forward, blade automatically re-engages for plowing. All you do is drive.

LIFT BLADE WHEN DONE



When finished plowing simply remove pins and lift one end at a time into holders and secure with pins. It's that easy!

SNOWSPORT® HD UTILITY PLOW



HD UTILITY PLOW

The SnowSport® HD Plow lets you clear snow from the comfort of your truck or SUV in less time than with a shovel or cumbersome snow blower. The plow is self-adjusting and doesn't require any controls in the cab. The model specific mount easily attaches to the front of your vehicle. There are no electric or hydraulic components to worry about freezing, malfunctioning or wearing out. To start plowing, all you do is drive forward. The heavy-duty construction allows for plowing in the most demanding conditions and is perfect for homeowners and small businesses.

YEAR ROUND LANDSCAPING



"I've used the plow in many different snow conditions, from fluffy to heavy wet snow with an ice crust. The plow does an excellent job, it continues to amaze me every time I use it." ~Paul, New York

QUALITY FEATURES OF THE HD UTILITY PLOW

FAST ATTACH



- Most front mounts install in about 30 minutes using pre-existing holes
- Push frame slides into front mount and secures with a pin

ANGLING BLADE



- Adjustable, 3-point positioning blade: straight or dual angled
- Pivoting plate makes switching positions fast and easy

LARGE CAPACITY



- Flexible box ends keep snow from spilling out the sides
- Blade actually lifts snow for higher piles

QUICK PINS



- Holds blade in place while plowing
- Secures blade for transport while at highway speeds

OPTIONAL HOLD DOWN STRAP



- Maintains constant down pressure on the plow
- Assists the plow in removal of hard, compact snow
- Sold separately

SPECIFICATIONS

- Anodized 6063-T6 aluminum extruded blade
- Model specific front mount included in package
- 84" wide x 18" high x 3" thick
- Heavy duty 1" thick rubber cutting edge
- Includes 2 Blade Markers
- Includes Box Ends
- Blade weight approx. 110 lbs.
- Shipping weight approx. 215 lbs. (includes front mount)
- Three Year Warranty



SNOWSPORT®

180 UTILITY PLOW

180 UTILITY PLOW

The SnowSport® 180 Plow is perfect for homeowners wanting to clear their driveway of snow. The durable 7 foot blade is designed for use in either the front or back of your vehicle and mounts to any standard 2" receiver hitch, making it ideal for SUVs, Mini-Vans and Crossover vehicles. This efficient snow plow can be used by anyone in the family and is perfect for when the city plows leave snow blocking your driveway. With the SnowSport® 180, you can back out of your garage and clear snow easily, getting you out and on your way in no time.

"I think the SnowSport 180 is fantastic...it has worked very well clearing snow from my 150 foot gravel driveway. Now I can clear the driveway from the comfort and warmth of my vehicle!"
 Andy A. -West St. Paul, Manitoba

PLOW FROM THE COMFORT OF YOUR HEATED VEHICLE



QUALITY FEATURES OF THE 180 UTILITY PLOW

REVERSIBLE



- Use in any standard 2" front or rear receiver
- Works with SUVs, Mini-Vans, Pickups or Crossover Vehicles

7 FOOT SWIPE



- One pass moves 7 ft of snow
- Durable rubber cutting edge works with tough aluminum blade

BLADE MARKERS



- Clearly marks plow edges
- Easy visibility of blade when driving forward or backward

FAST ON/OFF



- Slide-on attachment secures with a pin
- Fast and easy removal - no tools required

OPTIONAL HOLD DOWN STRAP



- Maintains constant down pressure on the plow
- Assists the plow in removal of hard, compact snow
- Sold separately

SPECIFICATIONS

- Anodized 6063-T6 aluminum extruded one piece blade
- Heavy duty 1" thick rubber cutting edge
- Includes 2 Blade Markers
- Blade weight approx. 56 lbs.
- Shipping weight approx. 109 lbs.
- Fits standard 2" rear receiver
- Blade is 84" long and 14 1/2" high
- Three Year Warranty

SNOWSPORT®

ALL TERRAIN PLOW

"...the ease and maneuverability of the SnowSport is amazing. My first test was 10" of medium weight snow, and I was able to push 100+ feet at a time without any problems."

John Krebs, New Hampshire

ALL TERRAIN PLOW

The SnowSport® All Terrain Plow will move as much snow as your ATV, UTV, or Zero-Turn Mower can handle and fits into those hard to reach places where a full size plow can't go. The motion-activated, aluminum blade attaches in minutes and can be completely removed in seconds, so it never hinders the use of your machine. Use it to push snow, livestock feed, gravel, dirt and more, without worrying about it tearing up your landscape. The SnowSport® All Terrain Plow will turn your ATV into your most valuable tool.

BLADE LIES BACK WHEN IN REVERSE



QUALITY FEATURES OF THE ALL TERRAIN PLOW

EASY TO MANEUVER



- Ideal for corners and sidewalks
- Lower blade, plow until finished and then raise the blade. It's that easy!

PUSH FRAME PINS



- Additional down pressure is added to blade when pins are engaged at rear of the push frame
- Makes for easy removal of hard, compact snow

INSTALLATION



- Mount installs in minutes and completely removes in seconds
- Slide push frame into front mount and secure with a pin

ANGLING BLADE



- Adjustable 3 point positioning blade
- Pivot plate makes switching positions easy

OPTIONAL HOLD DOWN STRAP



- Maintains constant down pressure on the plow
- Assists the plow in removal of hard, compact snow
- Sold separately

SPECIFICATIONS

- Blade made of clear anodized, hardened, extruded aluminum
- Single point connection with 1 1/2" square shaft interceptor
- Model specific front mount is included
- Heavy duty 1" thick rubber cutting edge
- Blade widths available: 48", 54", 60", 66" or 72"
- All blades are 14 1/2" high
- Three Year Warranty



SnowSport® HDS - Hold Down Strap PN 60220



Hold Down Strap maintains constant down pressure on any of the SnowSport® plows.

Assists the plow in removal of hard, compact snow.

Can also be used to hold the blade up off the ground when needed.

Hand Cuffs™

PN 60190



Shield your hands from wind, cold and the elements.

Universal fit works with any ATV, snowmobile or dirt bike.

Won't block controls on handlebars or interfere with heated grips.

"I just purchased your Hand Cuffs and I must say they are the best accessory I've purchased for my ATV! I have grip warmers but this keeps the heat around the outside of my hands as well as on the palms. Thanks for such a great product.

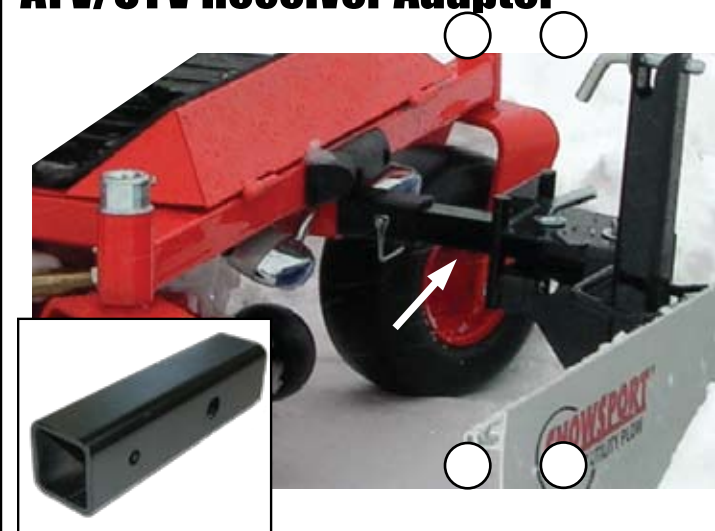
I'd recommend them to anyone!"

William Ronnigen - Michigan

[WWW.MYSNOWSPORT.COM](http://www.mysnowsport.com)

ATV/UTV Receiver Adapter

PN 50510



Adapts any standard 2" receiver down to 1 1/2".

Quick and easy installation and removal.

8" long.

ATV Rear Receiver

Model Specific Call for PN



Standard 2" rear receiver requires OEM ball hitch on rear of ATV for mounting purposes.

Installs in minutes.

Allows you to haul/tow more cargo with your ATV.

SnowSport® HD Utility Plow

SnowSport HD Plow Package Includes:		Plow Pkg Part #
Aluminum Blade, Push Frame with Hardware Kit, Angle Interceptor with Choice of One Plow Mount		
SnowSport® HD Blade 7' Long x 18" Tall		40000
Push Frame with Hardware Kit		40672
3 Point Angle Interceptor		30604
Plow Mount		See Below

- To order you must include part numbers 40000, 40672, 30604 and the front plow mount part number to get the complete kit.
- To order additional mounts without plow package, see below for part numbers.

Year	Make/Model	Part #
CHEVY/GMC		
2007-09	Chev/GMC New Body 1500	40108
2007-09	GMC/Chevy New Body 2500HD & 3500	40107
2001-07	Classic GM/Chevy Full Size 1500 HD, 2500 & 3500	40100
2000-06	Suburban/Yukon/Tahoe 2500 Series	40100
1999-07	Chev/GMC Classic Full Size 1500 Series (Not HD) fascia trimming on 05-07 models	40101
2000-06	Avalanche 1500 (Fascia trimming on some models)	40101
2000-06	Suburban/Yukon/Tahoe 1500 Series	40101
1999-06	GMC Denali (minor fascia trimming)	40101
2002-06	Cadillac Escalade (minor fascia trimming)	40101
1988-00	Chev/GMC Full Size (Old Body Style) (Except 2WD 2500-3500 w/8 Lug Nuts)	40102
1992-00	Suburban (Old Body Style) (Except 2500 w/ 8 Lug Nuts)	40102
1995-00	Yukon/Tahoe (Old Body Style)	40102
1992-95	Yukon/Tahoe/Blazer	40102
2006-07	Hummer H3	40106
1994-04	S-10/Sonoma/4WD w/Tow Hooks (Includes ZR2 & Highrider-some ZR2 may require field drilling)	40103
1995-01	Jimmy/Blazer 4WD & 2WD with Tow Hooks	40103
1996-00	Isuzu Hombre 4WD & 2WD with Tow Hooks	40103
1996-98	Bravada 4 DR 4WD & 2WD with Tow Hooks	40103
2002-09	Trail Blazer/Envoy/Buick Rainier	40104
2004-09	Colorado/Canyon 4WD	40105
DODGE		
2003-09	Dodge 2500-3500 Series 4WD & 2WD and 1500 Mega Cab	40140
2005-08	Dakota 4WD	40147
2002-08	Dodge 1500 Series 2 & 4WD (Except 1500 Mega Cab) (drilling 06 & newer)	40141
	Adapter Kit To Convert 40141 To Fit Sport Package	40001
2002-05	Dodge 1500 Series 4WD Sport Package	40142
1994-01	Dodge Full Size All Including 2002-2500-3500 Series	40143
2000-03	Durango 4WD & 2000-2004 Dakota 4WD	40144
1997-99	Durango & Dakota 4WD	40145
FORD/LINCOLN		
2008	Ford Super Duty 250-550	40131
2006-09	Lincoln Mark LT Pickup	40120
2004-09	F-150 New Body 4WD (not heritage) includes Super Crew's (Lower trimming on fascia required on some models)	40120
2003-06	Ford Expedition	40120
2005-09	Escape, Mercury Mariner, Mazda Tribute	40132
2001-03	Ford Super Duty 250-550 (except some early model 2001) and 04 With Build Dates Up To 11-30-03	40121
1999-00	Ford Super Duty 250-550 and some early model 2001	40122

Year	Make/Model	Part #
FORD/LINCOLN CONT.		
2001-03	Ford F150 SuperCrew (includes 04 Heritage)	40123
1999-03	Ford F150 & 04 Heritage F150 (4WD) w/Factory Tow Hooks	40123
1999-02	Expedition (4WD) with Factory Tow Hooks	40123
1997-98	Ford F150 LD (4WD) Minor skid plate trimming	40123
1998	Ford F250 LD (4WD)	40123
1997-98	Ford Expedition (4WD)	40123
1992-96	Ford F150 2WD & 4WD Gas with Stabilizer	40124
1992-09	Ford Ranger & Mazda	40125
1999-01	Explorer (Except 2 DR Sport)	40127
1999-01	Mountaineer	40127
2002-04	Explorer & Mountaineer (New Body 4 DR) (some drilling)	40129
NISSAN		
2007-09	Wrangler & Wrangler Unlimited JK	40164
1984-01	Cherokee/Wagoneer (Compact w/o Skid Plate)	40160
1993-98	Grand Cherokee	40161
1997-06	Wrangler TJ (With Factory Bumper) Round Headlights	40162
1987-95	Wrangler YJ (With Factory Bumper) Square Headlights	40163
TOYOTA		
2004-08	Nissan Titan	40185
2005-08	Nissan Frontier	40187
2007-09	Toyota FJ Cruiser	40188
2007-09	Toyota 4 Runner	40188
2007-09	Toyota Tundra	40186
2000-06	Toyota Tundra (some drilling)	40181
2001-07	Toyota Sequoia (some drilling)	40181
2005-09	Toyota Tacoma	40184
2001-04	Toyota Tacoma	40183

SnowSport® 180 Utility Plow

SnowSport® 180 Package Includes		Part #
180 Aluminum Blade, Push Frame & Fixed Interceptor (No Mount)		
SnowSport® Plow Kit		40082

SnowSport® All Terrain Plow

SnowSport All Terrain Plow Package Includes:		Plow Package Part #
Aluminum Blade 14 1/2" Tall, Push Frame with Hardware Kit, Angle Interceptor with Choice of One Plow Mount		
SnowSport® All Terrain Kit 48"		40048
SnowSport® All Terrain Kit 54"		40054
SnowSport® All Terrain Kit 60"		40060
SnowSport® All Terrain Kit 66"		40066
SnowSport® All Terrain Kit 72"		40072

- To order select appropriate plow package part # above and front plow mount # below.
- If ordering a plow without a plow mount, part #50510 receiver adaptor (adapts from 2" to 1 1/2") will be included at no charge.

Year	Make/Model	Part #
ARCTIC CAT		
03-08	400 Automatic 4X4, ACT, MRP, TBX & VP	60060
02-08	400 4x4 & 500 4X4 & 500 Automatic 4X4	60060
2003	500 Automatic MRP 4x4	60060
02-08	500 Automatic TBX 4x4	60060
04-08	500 Automatic TRV 4x4	60060
2002	500i 4x4	60060
04-08	650 Automatic 4x4	60060
07-08	700 EFI & 700 ATV Diesel 4X4	60060
2008	1000 Thundercat	60060
CAN-AM		
07-08	Renegade 800	30520
2008	Renegade 800 X (w/bottom skid plate removed)	30520
05-08	Outlander 800	30520
06-08	Outlander 650	30520
07-08	Outlander 500	30520
HONDA		
08-09	Rancher 420	60150
05-08	Rubicon (all)	40510
05-08	Foreman (all)	40510
00-04	Rubicon (all)	30570
03-08	Rincon (all)	30560
JOHN DEERE		
04-08	John Deere Gator HPX and XUV UTV	40470
KAWASAKI		
05-08	Brute Force 750 4x4i & 650 4x4i (independent suspension)	50988
01-08	Mule 3000/3010 UTV	50770
05-08	Mule 600/610 series UTV	50830
POLARIS		
2009	Polaris Sportsman XP 550 & 850	60320
2008	Polaris Sportsman Touring 800 EFI & X2 700 EFI	30500
05-08	Polaris Sportsman 800 Twin EFI 4X4	30500
02-07	Polaris Sportsman 700 Twin 4x4	30500
05-08	Polaris Sportsman 500 Twin 4x4, Touring & X2	60055
05-08	Polaris Ranger UTV	40480
2008	Polaris Ranger RZR UTV	60044
SUZUKI		
2008	King Quad 750	30530
05-07	King Quad 700	30530
2007	King Quad 450	30530
YAMAHA		
07-08	Grizzly 700	60230
02-08	Grizzly 660 4x4 Auto	30540
03-09	Yamaha Rhino UTV (all)	60077