

# GTU



as standard



**AIXAM**

NO. 1 FOR AM LICENCE VEHICLES





# GTO

## STAND OUT FROM THE CROWD

*AIXAM's all new sports star.*

Our new jewel in the AIXAM "Impulsion" range has that racy look, an astonishing level of equipment and bags of character. AIXAM have designed many luxurious touches that appeal to those looking for an elegant yet sporty image. Come on give it a try!

*100% Safety.*

The GTO is equipped with ABS. This sophisticated technology is yet another plus for your day-to-day safety





GT0

MODERN AND DARING

***GTO, has a racy yet beautifully well defined look.***

Its unique style is captivating. Every little detail is carefully designed to produce that competitive look. Check out the carbon fibre look trims that flatter its athletic lines, all confirming its personality and reinforcing its sporty appeal. The GTO attracts attention wherever it goes!





# GTO

## ENERGY

*Very refined balanced lines with superior detailing, the GTO sets a new standard in style.*



The aggressively styled front design is set off with fog lights, LED headlamps, and a carbon fibre look bumper detail. Why not be the centre of attention!

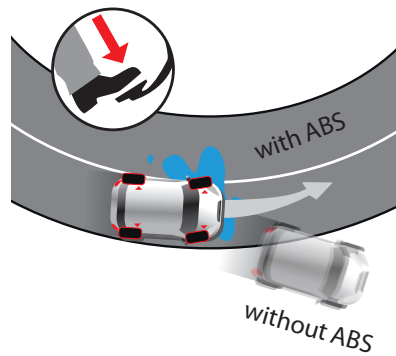


The chic sporty rear with its carbon fibre look spoiler and bumper combined with its chrome-plated double exhaust built into the centre of the rear air extractor exudes style. Tame this beast!



### ***ABS AS STANDARD***

The Antilock Braking System optimises your braking distances and allows you to control the vehicle while avoiding obstacles. Effective on all road surfaces and all weather conditions.

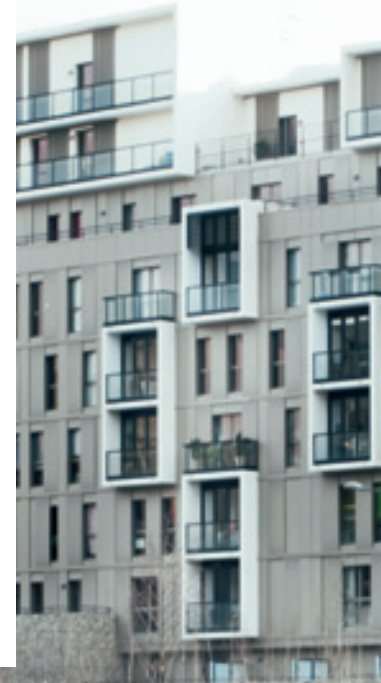


**as standard**





Fantastic 15" rims with a bold diamond pattern and red-lacquer finish help the pearly reflection create an array of colours which set off your wheels to their optimum.



# GTO

COMPACT AND **MULTI-PURPOSE**

*Just pure driving pleasure.*

The GTO will add glamour to your life, combining a car racing design with the exceptional comfort provided for your everyday driving. This car will meet your every need and take you where ever you want to travel in complete safety. Small and precise it adapts to any type of traffic conditions. The GTO will surprise you with its high level of safety and comfort.







**GTU**  
**STYLE ON WHEELS**





### *Pure comfort.*

AIXAM have created a practical yet comfortable interior. Our high standards are evident when it comes to selecting the finest materials and the trendy dashboard has been designed to achieve unrivalled quality.

The imitation leather textured dashboard is comparable with the very best of modern automobile designs.

Our interior is set off with a high quality trim and offers complete driver functionality.

# GTU

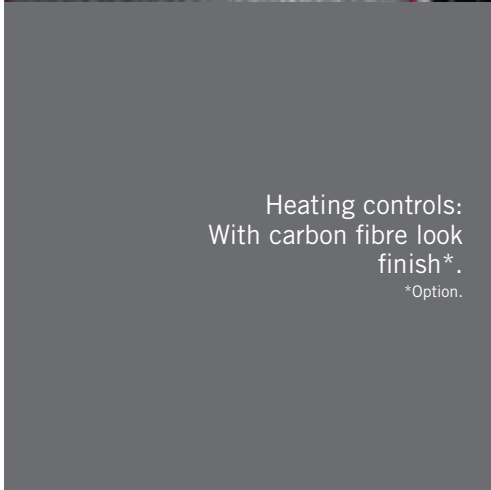
## STYLISH DETAILS



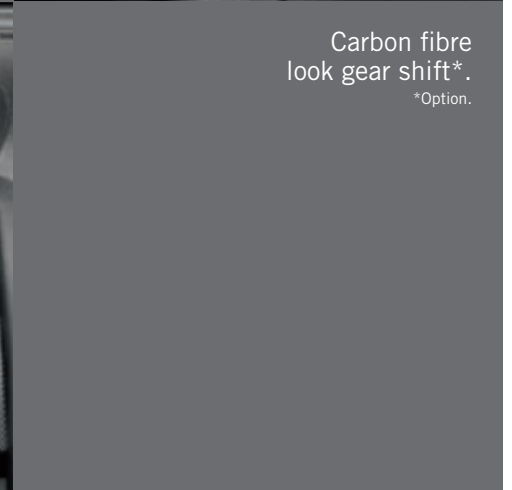
Imitation leather textured seats with contrasting red stitching.



Carbon fibre look gear shift\*.  
\*Option.



Heating controls:  
With carbon fibre look  
finish\*.  
\*Option.



Carbon fibre look gear shift\*.  
\*Option.



# THE CARBON FIBRE LOOK

Discover the many  
finely detailed finishes.



CD MP3 radio with  
an auxiliary jack on  
the front panel.



## SOPHISTICATED TRIMS

Floor mat  
with GTO embroidery  
picked out in red stitching.



Embroidered seats  
with red stitching.  
Adjustable in length  
and angle.  
Driving comfort  
adapted to all shapes



SILVER GREY/CARBON LOOK



RED/CARBON LOOK



PEARL WHITE/CARBON LOOK



## FINISH AND OPTIONS

### DASHBOARD

D-N-R display for gear position  
Back-lit tachometer needle  
Chrome-plated gauge rims  
Digital total trip and partial trip odometer  
Double digital speedometer  
White background  
Digital clock  
Service due indicator  
Bargraph style fuel gauge with warning light  
Adjustable instrument panel backlighting  
Outdoor temperature with black ice warning (below 3°C)

### Warning indicators:

Battery charge  
Brake fluid level - hand brake  
Brake pad wear  
Oil pressure  
Water temperature

### Indicator lamps:

Left and right turning indicators  
Rear fog lights  
Low beam lights  
Hazard lights  
Full beam lights  
Pre-heating (diesel engine)  
Neutral gear

### DRIVEABILITY AND SAFETY

#### ABS (Antilock Braking System)

Headlights on audio warning  
Automatic activation of hazard lights on sudden braking  
Ignition locked if in gear  
Steering lock  
Inertia lock front seat belts  
Heating-defrosting-powerful 3-speed fan  
Sporty chassis  
Front three-speed wipers (one intermittent speed)  
Rear wipers  
LED daytime driving lights  
Reversing lights (two)  
Rear fog lights (two)  
Front fog lights  
Windscreen wash with automatic wiping  
Timed defrost to rear window  
Laminated windscreen  
Reinforced front and rear bumpers  
Hi-power front headlamps  
2-position day/night rear view mirror  
Large left and right wing mirrors, can be adjusted from inside the vehicle  
Third LED brake light

### COMFORT AND FINISH

Circular air vents on the dashboard  
GTO lower body kit  
Rear spoiler  
Boot screen  
Removable ashtray  
Single key for all doors, ignition and the fuel tank.  
Cab/boot division panel  
Central console with cup holder and removable ashtray  
Double front grille  
Double chrome-plated exhaust  
Theatre style interior lighting  
Stylish decals to windscreen top and side-bars  
Fully lined boot  
Fully carpeted floor  
Wing bumper grilles  
Shiny black pillar cladding  
Fabric door lining  
Level 2 engine compartment sound proofing  
Level 2 cab sound proofing  
GTO logo

#### Electrical pack including:

Electric windows with one-touch opening/closing on left side  
Central locking with remote control and flashing visual reminder (flashing indicators)  
Anti-crushing system on one-touch window system  
Cigarette lighter

Sun visor with mirror on passenger side  
Textured imitation leather injected dashboard (automobile technology)  
Passenger grab handle  
New style external door handles  
Reversing sensors  
Rear GTO spoiler with air extraction  
GTO embroidered floor mats with red stitching  
Metallic or pearlescent colour  
Tinted windows  
Double-tinted rear windows

#### Carbon fibre look pack including:

Carbon fibre look lower body  
Chrome-striped heating control buttons  
Carbon fibre look rear view mirror shells  
Carbon fibre look GTO front bumper  
Carbon fibre look facing on the front grilles  
Carbon fibre look tail gate facing Black external door?\*  
handles Black internal door handles ?\*\*\*\*  
Rear spoiler with carbon fibre look extractor

#### Red dashboard decal kit including:

Painted air vent rims  
Painted dashboard strips  
Painted door trims  
Chrome-striped heating control buttons  
Painted trims for heating controls  
Red steering wheel trims





## Customise your GTO.

You can choose from our four exiting options for the finish of your vehicle.

- > Windscreen decal
- > GTO wing decorations,
- > Anti-slip aluminium floor plates,
- > Carbon fibre style dashboard decoration kit.

### SEATS

Front headrest  
Lower seat panel upholstery  
GTO imitation leather upholstery with red stitching + adjustable backs

### AUDIO

CD/MP3/RDS car radio with front auxiliary jack  
130 mm - diameter speakers

### STORAGE.

Load restraint bar  
Glovebox with coin tray and cup holder  
Central dashboard storage trays  
Door trays  
Mobile boot net

### WHEELS

Steel 145/70/13 emergency wheel with wheel brace and jack  
15" alloy wheels with GTO logo  
+ red lacquer finish 155/60R15

### OPTIONS

**Carbon fibre look dashboard decorative kit including:**

Complete carbon fibre look air vents Carbon fibre look dashboard strips Carbon fibre look door trims  
Carbon fibre look trims on heating controls  
Carbon fibre look steering wheel trims plus  
Carbon fibre look gear lever knob.

**GTO windscreen decal**

**GTO wing decals,**

**Anti-slip aluminium floor plates with GTO logo**

### DIESEL ENGINE

Configuration: front, transverse  
Displacement (cm<sup>3</sup>): 400  
Number and configuration of cylinders: 2, inline  
Fuel supply and emission control: injection and swirl chambers  
Cooling: liquid  
Maximum output kW CE (HP at ... rpm): 4 (5.4 at 3200)  
Torque (Nm at rpm): 14 at 2400  
Maximum load engine speed (rpm): 3200  
Fuel: diesel  
Alternator (W): 500  
Battery: 12 V 40 Ah  
Administrative power (France): 1 HP

### OVERALL DIMENSIONS (mm)

Length: 2827  
Width: 1 500  
Wheelbase: 1795  
Front track 1345  
Rear track 1345

### EMPTY WEIGHT (kg): 350

Unladen weight vehicle: 400  
Permissible gross weight: 675  
Permissible weight on the front axle: 340  
Permissible weight on the rear axle: 400

### PERFORMANCES

Maximum speed (km/h): 45

Consumption per 100 km (l)\*: 2.96  
Tank capacity (l): 16  
Range (km): approx. 500  
CO2 emissions (g/km): 77.9

### VSD-CONTROLLED AUTOMATIC TRANSMISSION

Driving wheels: front  
Driveline system: 1 Forward gear + Neutral  
+ 1 Reverse gear

### SAFE BRAKING WITH DOUBLE CROSS-ACTION CIRCUIT WITH LIMITER AND AUTOMATIC COMPENSATION FOR PAD WEAR

Front brake disc diameter (mm): 220  
Rear brake drum diameter (mm): 160

### HI-GAIN COIL SPRING SUSPENSION WITH DUAL-ACTION HYDRAULIC SHOCK ABSORBERS

Front: Fully independent Mac Pherson type struts  
Rear: Independent trailing arm suspension with helical spring supported shock absorbers.

Bodywork: Acrylic ABS body panels on an aluminium structure  
Rack-and-pinion steering, turning radius (m): 4  
Number of seats: 2  
Boot size (l): 700

# OPTING FOR AIXAM

Choosing AIXAM also means opting for a set of values based on a genuine quest for flawless quality.

## OUR COMMITMENT TO SAFETY

AIXAM vehicles offer exceptional levels of safety. Our aim is to protect passengers in the event of a collision as much as possible. AIXAM has submitted its vehicles to various crash tests based on automobile specifications for more than 20 years. AIXAM engineers combine all of this technical feedback into finding ever safer solutions: head-on, side and rear crash tests, help the design of better reinforced seat belt attachments, 2-position safety locks, a high density polyethylene fuel tank, etc.



### ***AIXAM has submitted its vehicle range to safety tests since 1988***

AIXAM constructs all of its models around the latest vehicle type standards in the European Union. AIXAM was the first manufacturer of limited licence vehicles to consider the safety of its end users. AIXAM have submitted their entire vehicle range to crash tests since 1988. These tests are not required by legislation, but are carried out to guarantee and optimise the safety of passengers.



**SO  
FRENCH**

Your AIXAM has been designed, created and assembled in France. Our workforce are based at two production sites in the Rhône-Alpes region (at Aix-les-Bains and Chanas): AIXAM is a jewel of French industry.

### ***(ABS) Inbuilt Innovation maximum safety***

AIXAM have equipped the GTO with ABS to ensure you have safe control of your vehicle during emergency braking conditions, Vehicle braking is much more effective when the road wheels are not locked. This system will optimise handling, braking distances and the wear life of your tyres.

## OUR COMMITMENT TO THE ECOLOGY

***AIXAM have always considered the environment as a major priority.***

In partnership with KUBOTA for Diesel engines, and LOMBARDINI for petrol engines, AIXAM have developed an entire range of engines, producing exceedingly low fuel consumption and controlled CO<sub>2</sub> emissions: Only 77.9 g/km, i.e. less than 37% in CO in comparison with the mean target of 125 g/km as prescribed by the European Parliament.

AIXAM can offer the best possible range in the market in terms of CO<sub>2</sub> emissions

Absolute record: **77.9 g/km** of CO<sub>2</sub>



## RECYCLABLE

AIXAM actively contributes to the protection of the environment by ensuring that its cars can be recycled. Almost 100% of vehicle parts can be recycled.

AIXAM constantly aims to find and select re-usable or recyclable materials today.

## THE POWER OF A NETWORK

AIXAM have a large Distributor network throughout Great Britain devoted to serving you. Contact our AIXAM team, whose role is to guide you through the range, provide sound advice on the services available and answer all of your questions.

We hope you will be impressed by our commitment to your requirements.



***Find your nearest Distributor:***  
***[www.aixam.com](http://www.aixam.com)***

## QUALITY SERVICES



FINANCING

Thanks to its partners, AIXAM can offer solutions to meet your budget. Your Dealer will advise you on the best means of financing if required.



THE AFTER-SALES  
SERVICE

The AIXAM network benefits from an impressive after-sales structure. A permanent stock of spare parts allows your Dealer to provide rapid repair solutions during vehicle servicing.



THE WARRANTY

Because reliability can only be measured over time, AIXAM provides a 2-year warranty for parts and labour on your vehicle with unlimited mileage, plus one year warranty on purchased spare parts.



**AIXAM**  
NO. 1 FOR AM LICENCE VEHICLES

**AIXAM MEGA**  
HEAD OFFICE AND PLANT  
56, route de Pugny - B.P. 112  
73101 AIX-LES-BAINS cedex - France  
Tel.: +33 (0) 4 79 61 42 45  
Fax : +33 (0) 4 79 35 06 11  
[www.aixam.com](http://www.aixam.com)

Check out the list  
of the 130 approved distributors  
on **[www.aixam.com](http://www.aixam.com)**

Your approved distributor



GTU

