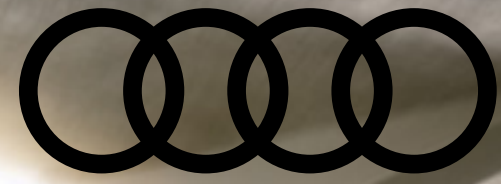


2019



A8

A8  
2019

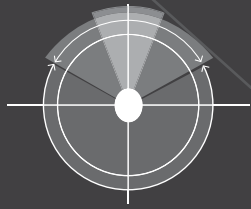
Audi of America  
[Audiusa.com](http://Audiusa.com)  
[Facebook.com/Audi](https://Facebook.com/Audi)

Note: A word about this brochure. Audi of America, Inc., believes the specifications in this brochure to be correct at the time of printing. However, specifications, standard equipment, options, fabrics, and colors are subject to change without notice. Some equipment may be unavailable when your vehicle is built. Please ask your dealer for advice concerning current availability of standard and optional equipment, and your dealer will verify that your vehicle will include the equipment you ordered. Vehicles in this brochure are shown with optional equipment. See your dealer for complete details on the Audi New Vehicle Limited Warranty, twelve-year limited warranty against corrosion perforation, and Audi 24/7 Roadside Assistance. (Roadside assistance coverage provided by Road America in the U.S. Certain conditions apply; see your dealer for details.) Tires supplied by various manufacturers. "Audi," all model names, "ASF," "Audi connect," "Audi pre sense," "Audi Sport," "MMI," "quattro," "Singleframe," "TFSI" and the four rings logo are registered trademarks of AUDI AG. "Alcantara" is a registered trademark of Alcantara S.p.A. "Amazon," "Amazon Music" and all related logos and motion marks are trademarks of Amazon.com, Inc. or its affiliates. "Android Auto," "Google," and "Google Play" are trademarks of Google Inc. © 2018 Google Inc. All rights reserved. "Apple" and "Apple CarPlay" are registered trademarks of Apple Inc. "Bang & Olufsen" and "B&O Play" re registered trademarks of Bang & Olufsen. The BLUETOOTH word mark and logos are owned by the Bluetooth SIG, Inc., and any use of such marks by AUDI AG is under license. "Suitsupply" is a registered trademark of Suit Supply B.V. "Tiptronic" is a registered trademark of Dr. Ing h.c. F. Porsche AG. "Yelp" is a registered trademark of Yelp, Inc. "Wi-Fi" is a registered trademark of the Wi-Fi Alliance. All other trademarks are the property of their respective owners. Some European models shown. Some features may not be available at time of order.



You can put thoughts  
of the future behind you.





SENSE OF  
VISION



SENSE OF  
TIME

Technology has come to your senses.



SENSE OF  
TOUCH

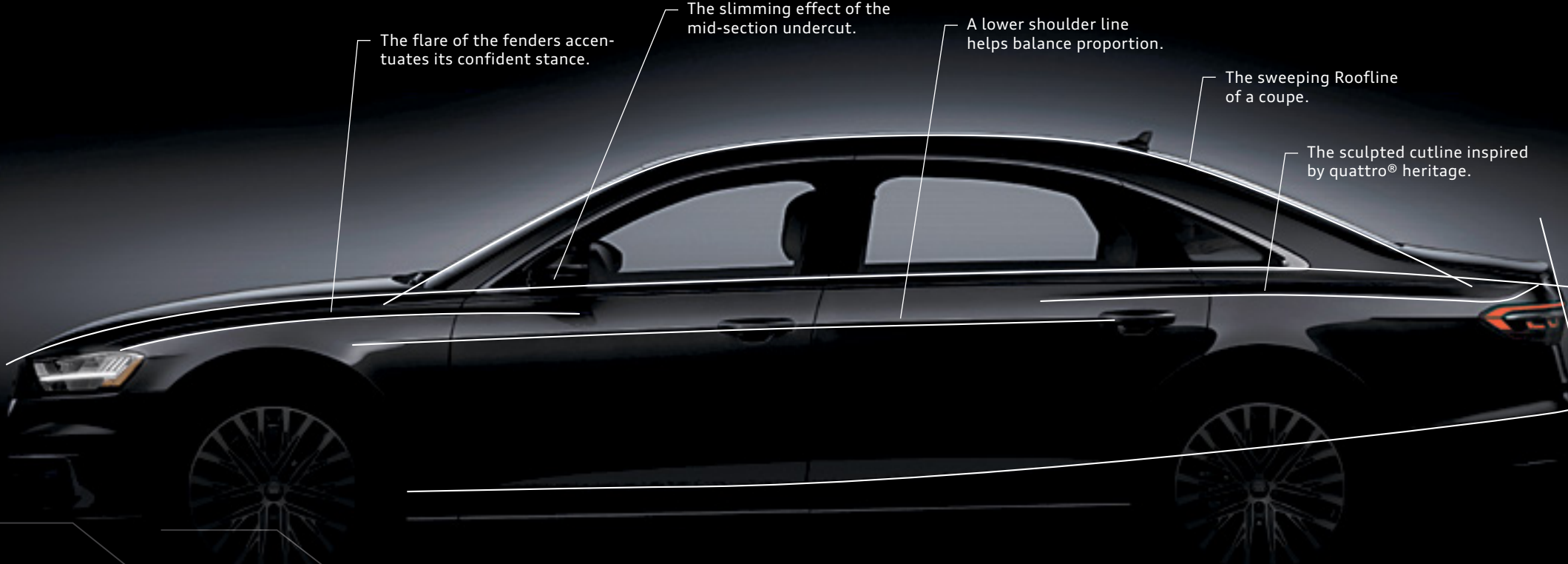


SENSE OF  
BELONGING



## All-new Audi A8

Advanced, in ways previously inconceivable. A presence, that comes with prestige. Influential, as imitators will soon follow. You don't have to imagine where mobility is headed now that the all-new Audi A8 has arrived. In the tradition of its predecessors, the A8 is both a design leader and a technological marvel, engineered to treat your senses and provide assistance on every drive. A vision, that's come to life. It's the present, on fast-forward.



The flare of the fenders accentuates its confident stance.

The slimming effect of the mid-section undercut.

A lower shoulder line helps balance proportion.

The sweeping Roofline of a coupe.

The sculpted cutline inspired by quattro® heritage.

**Lines are drawn to give shape to emotions.**

Rounded curves with muscular definition. The roofline's measured arc slips easily through the wind. Broad shoulders emphasize strength and stature. Design without purpose leads nowhere. Design with intent goes straight to the psyche.

2019 Audi A8 shown in Mythos Black metallic with available equipment.



**A Singleframe® is worth a thousand words.**

The Singleframe® grille on the Audi A8 has evolved as each generation establishes a new design language. On the new A8, the grille is both wider and lower to emphasize its sportier stance. From profile, its face is more upright. From another angle, a third dimension appears as the outer sections appear to fold inward. What it says depends on your perspective.

2019 Audi A8 shown in Terra Gray metallic with available equipment.



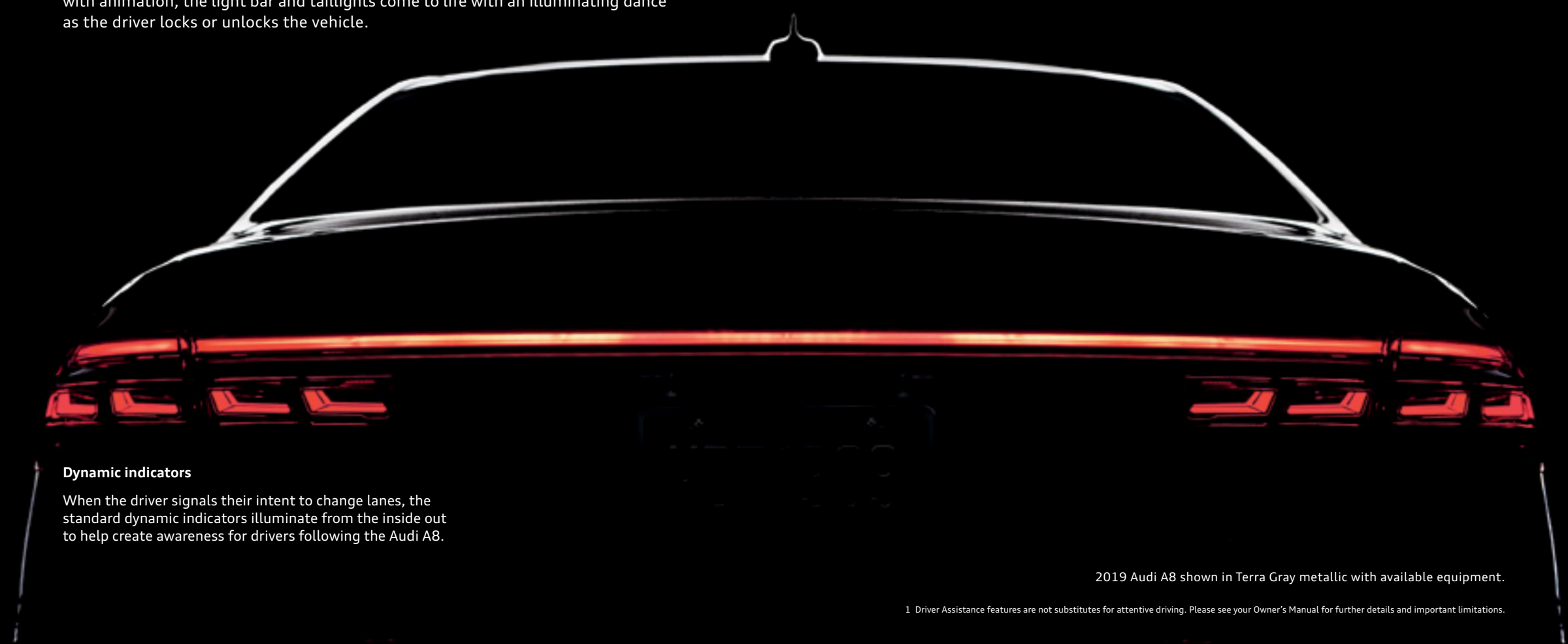
## Shedding light on innovation.

If the eyes truly are the windows to the soul, a longer look at the headlights on the Audi A8 reveal a complex, precise character that looks at the road ahead with optimism. The shape of the headlights exudes a focused demeanor, and the full LEDs produce a light spectrum much like the mid-day sun. They feature high-beam assistant technology that can lower light intensity when an oncoming vehicle is detected.<sup>1</sup> These eyes, on the Audi A8, sparkle with innovation.

2019 Audi A8 shown in Seville Red metallic with available equipment.

## Light on its feet.

Extending across the lower section of the trunk lid and serving as a visual bridge between the dynamic taillights, the light bar highlights the increased width and sporting stance of the Audi A8. When equipped with the available OLED taillights with animation, the light bar and taillights come to life with an illuminating dance as the driver locks or unlocks the vehicle.



### Dynamic indicators

When the driver signals their intent to change lanes, the standard dynamic indicators illuminate from the inside out to help create awareness for drivers following the Audi A8.

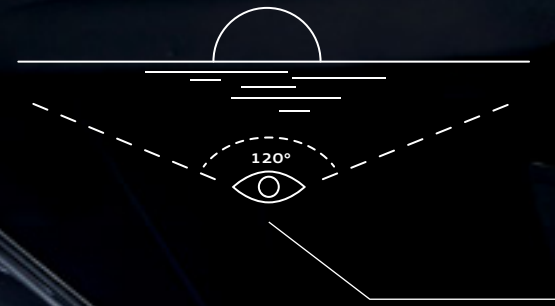
2019 Audi A8 shown in Terra Gray metallic with available equipment.

<sup>1</sup> Driver Assistance features are not substitutes for attentive driving. Please see your Owner's Manual for further details and important limitations.



## Minimalism taken to maximum effect.

Instead of a cluster of buttons and switches found in traditional interiors, the interior of the Audi A8 features an expanse of crafted natural wood inlays, the luster of high-gloss Black surfaces and active climate control shutters that automatically fold into the dashboard when not in use. By using innovative touchscreens to operate infotainment and climate control systems, those inside can experience a design revolution. Minimalism, in this case, doesn't mean you have to do without. It means much can be gained with less.



Interior designers crafted the wraparound interior to fit within 120° of our vision.

2019 Audi A8 shown with Sarder Brown Valcona leather with limited available equipment.



## The benefits of negativity might surprise you.

The available Air quality system in the Audi A8 includes an air ionizer that fills the interior with negatively charged molecules that can help reduce the amount of dust, allergens and other particulates in the cabin. Here's one case where negativity can produce a positive outcome.

### Refreshing your memory

A soothing sea breeze or the woody notes of forest air. As part of the available Air quality system, the air fragrance feature introduces scented air into the cabin that can remind you of a drive along the coast or ski season in the mountains. The perfumers were inspired by the smells of Italian lemon and rosemary for the summer scent and cedar, rose and violet for the winter scent.

A photograph of the interior of a 2019 Audi A8. The view is from the passenger side looking towards the driver's seat. The seats are upholstered in a dark, perforated leather. The center console and door panels feature wood trim. The steering wheel and dashboard are partially visible in the background. The lighting is soft, highlighting the textures of the leather and wood.

## This kind of therapy doesn't require an appointment.

Imagine a soothing massage, on your schedule. Or the cooling effects of available ventilated seats. Within the interior's modernist lines is not just the rewarding touch of premium leather or the texture of natural wood inlays, but a host of features designed to elevate the luxury experience. From the quiet of available acoustic dual-pane glazed glass to the warmth of available heated door armrests and center console, the new Audi A8 is ready to treat you, without reservation.

# Suspension of disbelief.

The available Predictive active suspension<sup>1,2</sup> system in the Audi A8 takes a proactive instead of a reactive approach to suspension performance. A front-facing camera scans the road ahead up to 18 times per second, while electromechanically activated motors on each wheel adjust suspension travel and load within milliseconds. The electronic chassis platform places a premium on stability by helping to reduce body roll during turns and the pitching motion that occurs during braking and acceleration. The result is a balance of ride comfort and handling control that's hard to believe.

## A8

The 3.0-liter TFSI® V6 engine was engineered to deliver powerful throttle response in a smooth, refined manner. A twin-scroll turbocharger design and revised Audi valvelift system help provide up to 335 hp and 369 lb-ft of torque through a wide engine rpm range.

### Predictive active suspension<sup>1</sup>

Using information gathered by the network of sensors in the Audi pre sense® 360 system and working in tandem with the available Predictive active suspension,<sup>1</sup> the system can raise the vehicle up to 3.1 inches when it senses a potential side impact. This distributes impact forces closer to the lower, stronger sections of the chassis.

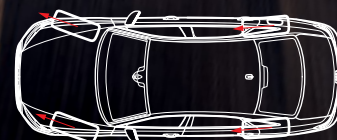


### Dynamic all-wheel steering

The available dynamic all-wheel steering system features an electromechanical steering system on the front and rear axles. The system is designed to enhance both stability during lane changes and maneuverability by decreasing the vehicle's turning radius. Thus equipped, the Audi A8 has a turning radius similar to an Audi A4.

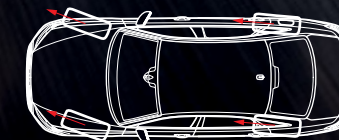
#### Low-speed maneuvering

Ideal for making your way through confined spaces such as parking garages, the system steers the rear wheels in the opposite direction of the wheels on the front axle.



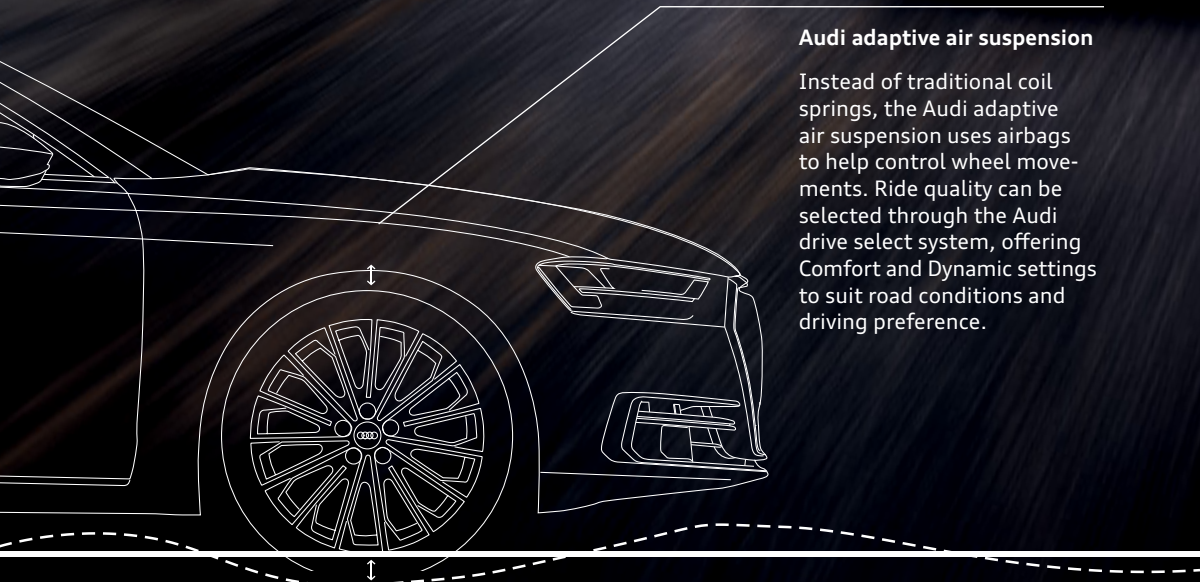
#### High-speed maneuvering

During lane changes at highway speeds, the rear wheels turn in the same direction as the front wheels to help improve stability.



### Audi adaptive air suspension

Instead of traditional coil springs, the Audi adaptive air suspension uses airbags to help control wheel movements. Ride quality can be selected through the Audi drive select system, offering Comfort and Dynamic settings to suit road conditions and driving preference.



2019 Audi A8 shown in Florett Silver metallic with available equipment.

<sup>1</sup> Delayed availability. <sup>2</sup> Driver Assistance features are not substitutes for attentive driving. Please see your Owner's Manual for further details and important limitations.

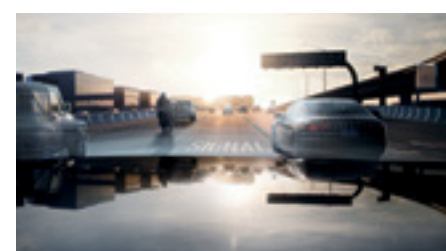


# There's a beauty to intelligence that looks can't achieve.

Knowledge may be power, but its application is most important. By linking an array of sensors and cameras to a central driver assistance controller capable of up to 741 billion computations per second, the driver assistance features in the Audi A8 reached a new level of sophistication. These systems were engineered to help alert you to an impending event, acting like an extra pair of eyes or assisting during traffic congestion. By gathering data and turning it into greater awareness, you may like the A8 more for its brains than its looks.<sup>1</sup>

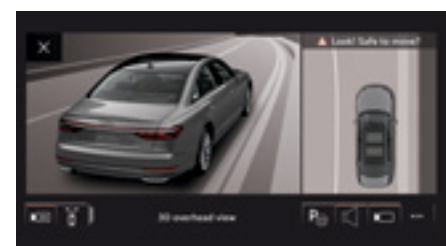
## A picture forms

Data gathered from front- and rear-mounted cameras, sonar and radar sensors, an infrared camera and a LIDAR laser scanner are sent to the central driver's assistance controller. Then that controller combines the data to form a picture of the vehicle's surroundings. This is an actual image created by Audi driver assistance systems.



## Audi adaptive cruise assist

Comprising both Audi adaptive cruise control and Audi active lane assist, available Audi adaptive cruise assist helps the driver accelerate, brake, and maintain speed and distance as well as stay in the lane in traffic or at high speeds.<sup>2</sup>



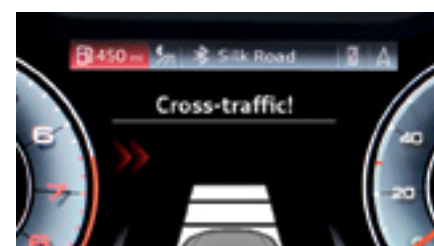
## Top view camera system with Virtual 360 view

Using four cameras placed throughout the Audi A8, the available Top view camera system with Virtual 360 view displays the vehicle and its surroundings on the top MMI® touch response screen.<sup>2</sup> The driver can select an area of the car and zoom in to see objects or obstructions surrounding the vehicle.<sup>2</sup>



## Traffic sign recognition

Traffic signs indicating speed limits, no passing zones and school zones are displayed on the Audi virtual cockpit or available head-up display to help raise awareness. The system displays the current speed limit, and the driver can program a warning threshold when speed limits are exceeded.<sup>1</sup>



## Intersection assist

The front-side mounted radars monitor the surroundings while the vehicle is at an intersection. The available system sends visual and audible warnings to alert the driver and passengers of an approaching vehicle detected, and it can apply a warning brake jolt if the driver doesn't respond while pulling slowly through an intersection.<sup>1</sup>

<sup>1</sup> Driver Assistance features are not substitutes for attentive driving. Please see your Owner's Manual for further details and important limitations.

<sup>2</sup> Always pay careful attention to the road, and do not drive while distracted. See Owner's Manual for further details and important limitations.



## You can sense that the feedback will be positive.

Some revolutionary designs may look like they will take some getting used to. But the engineers who designed the MMI® touch response made sure that selecting your infotainment and climate control settings would be as easy as touching, swiping or scrolling through your smartphone or tablet. High-resolution touchscreens make the icons appear as 3D graphics, and interacting with the touchscreen produces physical and audible responses as confirmation. This extra level of interactivity proves that technology doesn't always leave you feeling cold.



Just like we respond to others with visual and audible affirmation, MMI® touch response reacts with haptic and audible confirmation to your input.

2019 Audi A8 shown with Sarder Brown Valcona leather with limited available equipment.

# With myAudi, your Audi stays by your side.

With the myAudi app and Audi connect® working together,<sup>12</sup> you can experience an expanded level of integration and a suite of new convenience features. In addition to your music, contacts and emails, myAudi can transfer points of interests into navigated route guidance, be used to lock or unlock your doors or help you find your car in a crowded parking lot with your compatible device. So even when you are away from your vehicle, it can feel nearby.<sup>15</sup>

## myAudi Navigation

myAudi Navigation is engineered to integrate with the MMI® Navigation system and to store your favorite and recent routes. Route guidance considers current and predicted traffic conditions, and it can offer alternative routes when traffic congestion is detected.<sup>5,12,13</sup>

## Amazon Music

Get unlimited access to millions of songs. Visit [amazon.com/myaudi](https://amazon.com/myaudi) to sign up and stream through your MMI® display. Simply link the myAudi app to your Amazon account and start listening.<sup>12,13</sup>

## Yelp® Review Highlights

Find out what the buzz is about. Yelp® Review Highlights gathers frequently used descriptions and phrases from customer reviews to help give you a quick picture of the business and its services.<sup>7,12,13</sup>

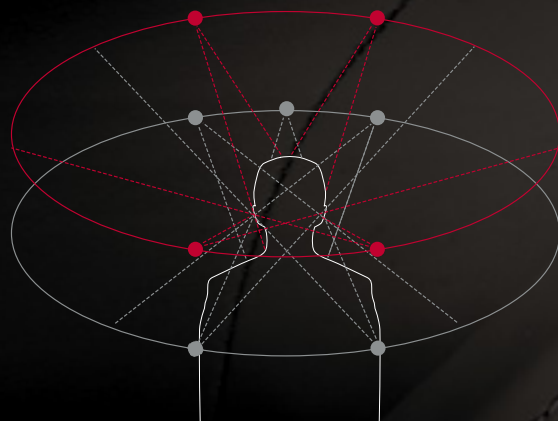
2019 Audi A8 shown with Sarder Brown Valcona leather with limited available equipment.

# Begin every journey on a high note.

Renowned audio specialists Bang & Olufsen® expand the listening experience to new dimensions with the standard Bang & Olufsen® 3D Premium Sound System with 17 speakers and 730 watts of amplified power and available Bang & Olufsen® 3D Advanced Sound System with 23 speakers and 1920 watts of power. Strategically placed speakers throughout the interior, including in the A-pillars and roofline, help surround the listener with rich, vibrant clarity.

## Full 3D surround experience

By placing speakers above the listener, Bang & Olufsen® brought a sense of height to sound reproduction. A post-processor transforms the audio signals to give them a more spatial, three-dimensional quality.



BANG & OLUFSEN



A



B



C



D



E



F



G

- A. Panoramic sunroof with blackout sunshades** | Front and rear seat passengers can feel the warmth of natural light. A blackout sunshade is also ready to help keep you cool.
- B. Audi virtual cockpit** | Choose from two viewing modes through the 12.3-inch high-resolution screen.
- C. Available heated steering wheel** | Add a warm touch to your drive on cold mornings.
- D. Available Valcona leather** | Our most luxurious leather is soft, smooth to the touch and available in several colors.
- E. Available Audi phone box with wireless charging and antenna booster** | Recharge your compatible phone and help keep your signal strong with the antenna boost feature.<sup>10</sup>
- F. Available ambient LED interior lighting plus package** | Change the mood by selecting from a palette of vibrant colors.
- G. Available front seat massage function** | Choose massage settings through the intuitive interface of MMI® touch response.<sup>4</sup>



See how the Audi A8 has raised the standards of luxury and innovation.

Visit:

**AudiUSA.com**

4,10 See A8 Featured Highlights, Packages and Options pages for important information regarding: MMI® touch and Audi phone box.

# Change the settings on your preferences.

Make your preferences a reflection of your sense of style. Audi Genuine Accessories are engineered to fit your Audi A8 with the same commitment to quality and functionality you expect from Audi. Choose from protective floor mats or a car cover, or add your own touch with a bold wheel selection. Audi Genuine Accessories make it easy to put your signature on your new Audi A8.



## A. A8 car cover

A lightweight, easy-to-use cover helps protect your vehicle's finish. Intended for indoor use only. Storage bag included.

## B. All-weather floor mats<sup>1</sup>

The all-weather floor mats feature a deep-ribbed, channeled design that helps protect your vehicle's floor and carpeting from the elements. Black mats are available in sets of two for front or rear. Front mats feature the A8 logo.



## C. All-weather cargo mat

Custom fit for your Audi A8, the raised outside edge of the cargo mat helps contain spills and protect cargo-area carpeting from stains. The textured material helps control load shifting.

The Four Rings  
are geared to  
inspire action.



A

B

#### A. Men's Helium Polo

An Audi polo shirt is a must-have for any enthusiast, and this short-sleeve is no exception. A lightweight moisture-wicking material and a classic cut make it ideal for a long hike or a long lunch.

#### B. Audi Ladies' Shirts

Whether on the pitch or on the go, there is a full line of Audi enthusiast shirts and polos available and tailored to your taste. From contemporary materials to help keep you dry to timeless designs to accommodate your style, these garments are curated to bring your passion for sport, and Audi, to the fore.

#### C. Suitsupply® Bags

Timeless premium leather and a contemporary design orchestrate an impeccable suite of baggage. Subtle Audi rings logo debossing shows off your tastes beyond your overnighter.



C



D

#### D. D'Blanc Prologue Ladies' Sunglasses

Give your look an Apennine flair with these Italian frames from D'Blanc. With Mazzucchelli acetate between lens and frame and '60s-inspired styling, these are perfect for a day in the sun or behind the wheel.

#### E. Audi Sport® B&O PLAY™ H8 Bluetooth® Headphones

A sound gift idea for the Audi enthusiast, even if that means you, the Audi Sport® B&O PLAY™ H8 Bluetooth® Headphones offer wireless Bluetooth 4.0 listening, along with Active Noise Cancellation for exceptional sound quality when you're on the go. Conveniently switch between songs and accept phone calls with the intuitive touch user interface on the right ear cup. Audi Sport® logo and engraved B&O logo on the ear cup.

#### F. Saturday Sweatshirt

This workaday quarter-zip sweater puts your comfort first and your Audi pride over your heart. A cotton/polyester blend means lightweight performance, and raglan sleeves and rib knit cuffs and hem mean comfort that adapts to your work-life balance.



E



F

Visit [audi.us/collection](https://audi.us/collection) for more.

## A8 Featured Highlights | Packages and Options



2019 Audi A8 shown in Terra Gray with available equipment.

### Highlighted Features

- > 19" 15-spoke design wheels with 255/45 all-season tires<sup>1</sup>
- > 48v MHEV mild hybrid technology
- > Full LED headlights with high-beam assistant<sup>2</sup>
- > LED taillights with dynamic indicators
- > Panoramic sunroof with blackout sunshades
- > Power-adjustable, power-folding, auto-dimming, heated exterior side mirrors with memory
- > Four-spoke multifunction steering wheel with shift paddles
- > Power tilt and telescopic adjustable steering column with memory
- > Valetta leather seats
- > Fine Nappa Leather package (center console, door armrests and airbag cap)
- > Heated 18-way power comfort front seats, including power lumbar adjustment and memory
- > Four-zone automatic climate control
- > Dark Brown Walnut Natural Wood upper and Dark Matte Brushed Aluminum lower inlays
- > Leather-wrapped gear selector
- > Comfort front armrest
- > Power rear and rear side window sunshades
- > Driver and front-passenger extendable sun visors with illuminated vanity mirrors
- > Auto-dimming rear view mirror with digital compass
- > Ambient LED interior lighting package
- > Audi advanced key—keyless start, stop and entry with hands-free trunk release<sup>3</sup>
- > Aluminum door sill inlays
- > Power soft-closing doors
- > Power trunk, open and close
- > Audi virtual cockpit (12.3" LCD digital instrument cluster with two visual modes: Classic and Infotainment)
- > MMI<sup>®</sup> touch response with dual center displays and haptic feedback<sup>4</sup>
- > MMI<sup>®</sup> Navigation plus with natural voice control system<sup>5</sup>
- > MMI<sup>®</sup> Radio plus with Bang & Olufsen<sup>®</sup> 3D Premium Sound System, 17 speakers, 16-channel amplifier and 730 watts
- > Limited-time subscription to Audi connect<sup>®</sup> CARE assistance and security services<sup>6</sup>
- > Six-month trial subscription to Audi connect<sup>®</sup> PRIME and Audi connect<sup>®</sup> PLUS online services<sup>7,8</sup>
- > Audi smartphone interface including Apple CarPlay<sup>®</sup> and Google<sup>™</sup> Android Auto<sup>™</sup> for compatible devices<sup>9</sup>
- > Audi music interface with front USB port for data and charging
- > BLUETOOTH<sup>®</sup> wireless technology preparation for compatible devices
- > Rain/light sensor for automatic windshield wipers and headlights
- > Cruise control with coast, resume and accelerate features
- > Audi pre sense<sup>®</sup> basic and front<sup>2</sup>
- > Parking system plus with front and rear acoustic sensors<sup>2</sup>
- > Rear view camera
- > Safety package, front

### Available Packages

<b>Executive package</b> <ul style="list-style-type: none"><li>&gt; Audi side assist and Audi pre sense<sup>®</sup> rear<sup>2</sup><ul style="list-style-type: none"><li>- with Rear cross traffic assist<sup>2</sup></li><li>- with Vehicle exit warning<sup>2</sup></li></ul></li><li>&gt; Top view camera system with Virtual 360 view<sup>2</sup></li><li>&gt; Head-up display with navigation and assistance systems information<sup>2</sup></li><li>&gt; Heated and ventilated 22-way power comfort front seats including lumbar adjustment, seat memory and massage functions</li><li>&gt; Dual-pane acoustic glass</li><li>&gt; Heated steering wheel</li><li>&gt; Chrome exterior package</li><li>&gt; Audi phone box with wireless charging and antenna booster<sup>10</sup></li></ul>	<b>Driver Assistance package</b> <ul style="list-style-type: none"><li>&gt; Audi adaptive cruise assist<sup>2</sup><ul style="list-style-type: none"><li>- with Traffic jam assist<sup>2</sup></li><li>- with Turn assist<sup>2</sup></li><li>- with Predictive Efficiency assist<sup>2</sup></li></ul></li><li>&gt; Audi active lane assist with Emergency assist<sup>2</sup></li><li>&gt; Traffic sign recognition<sup>2</sup></li><li>&gt; Intersection assist<sup>2</sup></li></ul>	<b>Rear Seat Comfort package, 5-passenger</b> <ul style="list-style-type: none"><li>&gt; Power outboard rear seats with lumbar adjustment (five-seat configuration)</li><li>&gt; Ventilated outboard rear seats with massage function</li><li>&gt; Front-passenger seat power adjustment from the rear seat</li><li>&gt; Rear seat smart remote control</li><li>&gt; Rear heated surfaces (Rear door armrests and center console)</li><li>&gt; Rear Matrix LED reading lights</li></ul>	<b>Rear Seat Comfort package, 4-passenger</b> <ul style="list-style-type: none"><li>&gt; Rear passenger relaxation seat with footrest and heated foot massage function (eliminates front passenger seat massage function and limits front passenger seat to 10-way power adjustment)</li><li>&gt; Power outboard rear seats with fixed leather-wrapped full-length center console (four-seat configuration)</li><li>&gt; Folding productivity tables in center console</li><li>&gt; Safety package, rear (center rear airbag)</li><li>&gt; Rear wedge-style floor footrests</li><li>&gt; Ventilated outboard rear seats with massage function</li><li>&gt; Rear seat smart remote control</li><li>&gt; Rear heated surfaces (Rear door armrests and center console)</li><li>&gt; Rear Matrix LED reading lights</li></ul>
<b>Lighting package</b> <ul style="list-style-type: none"><li>&gt; HD Matrix-design LED headlights</li><li>&gt; OLED taillights with animation</li></ul>	<b>Luxury package</b> <ul style="list-style-type: none"><li>&gt; Ambient LED interior lighting plus package</li><li>&gt; Extended Leather package (Instrument panel top and door sills)</li><li>&gt; Alcantara<sup>®</sup> headliner</li><li>&gt; Valcona Leather seats</li><li>&gt; Aluminum-optic control buttons</li><li>&gt; Air quality system (ionizer and aromatization)</li></ul>	<b>Rear Seat Connectivity package</b> <ul style="list-style-type: none"><li>&gt; Audi tablet rear seat entertainment system (dual tablets)</li><li>&gt; Rear seat DVD changer</li><li>&gt; Audi music interface with two rear USB ports for data and charging</li></ul>	<b>Cold Weather package</b> <ul style="list-style-type: none"><li>&gt; Heated rear seats</li><li>&gt; Adaptive windshield wiping system</li><li>&gt; Front heated surfaces (Front door armrests and center console)</li></ul>
<b>20" Wheel package</b> <ul style="list-style-type: none"><li>&gt; 20" 20-spoke-structure design, gray/polished finish</li><li>&gt; 265/40 all-season tires<sup>1</sup></li></ul>		<b>20" Wheel package</b> <ul style="list-style-type: none"><li>&gt; 20" 20-spoke-structure design, gray/polished finish</li><li>&gt; 265/40 all-season tires<sup>1</sup></li></ul>	

### Stand-alone Options

<ul style="list-style-type: none"><li>&gt; Black Alcantara<sup>®</sup> headliner</li><li>&gt; Black cloth headliner</li><li>&gt; Gray/Brown Eucalyptus Natural Wood inlays</li></ul>	<ul style="list-style-type: none"><li>&gt; Gray/Brown Fine Grain Ash Natural Wood inlays</li><li>&gt; Full leather package</li><li>&gt; Dynamic all-wheel steering</li></ul>	<ul style="list-style-type: none"><li>&gt; Predictive active suspension<sup>11</sup></li><li>&gt; Night vision assistant with pedestrian and large animal detection<sup>2</sup></li></ul>	<ul style="list-style-type: none"><li>&gt; Bang &amp; Olufsen<sup>®</sup> 3D Advanced Sound System with 23 speakers, 23-channel amplifier and 1,920 watts</li><li>&gt; 265/40 summer performance tires<sup>14</sup></li></ul>
--	--	---	---

1 These tires may ride less comfortably, make more noise, and wear more quickly than other choices. To avoid tire, rim, or vehicle damage, it is important that inflation pressure is regularly checked and maintained at optimum levels. Tires are supplied and warranted by their manufacturer. 2 Driver Assistance features are not substitutes for attentive driving. Please see your Owner's Manual for further details and important limitations. 3 See Owner's Manual for further details and important warnings about the keyless ignition feature. Do not leave vehicle unattended with the engine running, particularly in enclosed spaces. 4 Always pay careful attention to the road, and do not drive while distracted. See Owner's Manual for further details and important limitations. 5 Audi Navigation plus depends on signals from the worldwide Global Positioning Satellite network. The vehicle's electrical system, and existing wireless and satellite technologies, must be available and operating properly for the system to function. The system is designed to provide you with suggested routes in locating addresses, destinations and other points of interest. Changes in street names, construction zones, traffic flow, points of interest and other road system changes are beyond the control of Audi of America, Inc. Complete detailed mapping of lanes, roads, streets, toll roads, highways, etc., is not possible, therefore you may encounter discrepancies between the mapping and your actual location. Please rely on your individual judgment in determining whether or not to follow a suggested Audi Navigation plus route. 6 Always pay careful attention to the road, and do not drive while distracted. Connect CARE services are provided with the support of authorized affiliated and third-party service providers. Available on select models. Connect CARE services are activated prior to purchase or lease and do not require registration or paid subscription. Connect CARE services require vehicle cellular connectivity and availability of vehicle GPS signal; certain services collect location information. See Terms of Service for information about how to disable. Connect CARE services are subject to technologies remaining commercially available, and such service is not guaranteed and may not be available after December 2021. See Terms of Service, Privacy Policy and other details at [www.audiusa.com/privacy](http://www.audiusa.com/privacy) and [www.audiusa.com/technology/intelligence/audi-connect/connect-terms](http://www.audiusa.com/technology/intelligence/audi-connect/connect-terms). Connect CARE services should be used only when it is safe and appropriate. 7 Always pay careful attention to the road, and do not drive while distracted. Connect PRIME services are optional, may require an additional subscription with separate terms and conditions, and should be used only when it is safe and appropriate. Trial or paid subscription required. Connect PRIME services require vehicle cellular connectivity and availability of vehicle GPS signal; certain services collect location information, see Terms of Service for information about how to disable. Online services are subject to change at any time. See Terms of Service, Privacy Policy and other details at [www.audiusa.com/privacy](http://www.audiusa.com/privacy) and [www.audiusa.com/technology/intelligence/audi-connect/connect-terms](http://www.audiusa.com/technology/intelligence/audi-connect/connect-terms). 8 Always pay careful attention to the road, and do not drive while distracted. The Wi-Fi<sup>®</sup>

hotspot feature is intended for passenger use only. 4G LTE coverage is not available in all areas. Wi-Fi<sup>®</sup> feature is provided through Connect PLUS. Connect PLUS features and technologies are optional, may require an additional subscription with separate terms and conditions, and should be used only when it is safe and appropriate. See materials provided by wireless carrier for terms, privacy, data security details. Returning devices connect automatically and use plan data unless hotspot is removed from device settings. 9 Always pay careful attention to the road, and do not drive while distracted. Not all features available on all operating systems. Standard text and data usage rates apply. These features require compatible device, operating system and mobile apps. See mobile device and app providers for terms and privacy. "Android," "Android Auto," "Google Play" and other marks are trademarks of Google Inc. "Apple CarPlay" is a registered trademark of Apple Inc. 10 Requires compatible smart device. This is a CONSUMER device. BEFORE USE, you MUST REGISTER THIS DEVICE with your wireless provider and have your provider's consent. Most wireless providers consent to the use of signal boosters. Some providers may not consent to the use of this device on their network. If you are unsure, contact your provider. You MUST operate this device with approved antennas and cables as specified by the manufacture. Antennas MUST be installed at least 20 cm (8 inches) from any person. You MUST cease operating this device with approved antennas and cables as specified by the FCC or a licensed wireless service provider. WARNING. E911 location information may not be provided or may be inaccurate for calls serviced by using this device. 11 Delayed availability. 12 Always pay careful attention to the road, and do not drive while distracted. Audi connect<sup>®</sup> should be used only when it is safe and appropriate. Audi connect<sup>®</sup> services and features are optional, provided with the support of authorized affiliated and third-party service providers, and may require additional subscriptions with separate terms and conditions. Available on select models. Certain services collect location information; see Terms of Service for information about how to disable and for other details. Connect services are subject to technologies remaining commercially available; such services are not guaranteed and may not be available after 2021 for equipped MY17–20 vehicles. 13 Requires compatible smart device. 14 These tires may ride less comfortably, make more noise, and wear more quickly than other choices. To avoid tire, rim or vehicle damage, it is important that inflation pressure is regularly checked and maintained at optimum levels. High-performance tires are designed for optimum performance and handling in warm climates and are not suitable for cold, snowy or icy weather conditions. When driving during cold, snowy or icy weather conditions, ensure that your vehicle is equipped with appropriate all-season or winter weather tires. Tires are supplied and warranted by their manufacturer. 15 Requires myAudi App. Smartphone message and data rates apply. Do not use feature to locate stolen vehicle.

# Technical Specifications

## Performance

	A8
Engine type	3.0-liter six-cylinder
Engine block/Cylinder head	Aluminum-alloy
Displacement (cc)/Bore and stroke (mm)	2,995/84.5 x 89.0
Horsepower (@ rpm)	335 @ 5,000–6,400
Torque (lb-ft @ rpm)	369 @ 1,370–4,500
Compression ratio	11.2:1
Valvetrain	24-valve DOHC with Audi valvelift system and variable valve timing
Induction/Fuel injection	Turbocharged/TFSI®
Start-stop engine system	■
Acceleration (0–60 mph)	5.6 seconds <sup>1</sup>
Top track speed	130 mph <sup>2</sup>

## Transmission | Drivetrain

Eight-speed Tiptronic® automatic transmission with quattro® all-wheel drive	■
---	---

## Body | Suspension | Chassis

ASF® multi-material body construction (steel, aluminum and carbon composition)	■
Audi adaptive air suspension (five-link front and rear)	■
Predictive active suspension <sup>3</sup>	□
Steering ratio	15.8:1
Electromechanical progressive steering system	■
Dynamic all-wheel steering	□
Ventilated front disc/Ventilated rear disc brakes (in)	14.8/13.8
Turning circle, curb-to-curb (ft)	42.2

## Exterior measurements

	A8
Wheelbase (in)	123.1
Length (in)	208.7
Height (in)	58.5
Overall width with mirrors (in)	83.9
Track, front/rear (in)	64.7/64.3
Ground clearance (in)	4.8
Height to loading lip (in)	27.4
Curb weight (lb)	4,751
Drag coefficient (Cw)	0.28

## Interior measurements

Head room front (in)	38.3
Head room rear (in)	38.5
Leg room front (in)	41.5
Leg room rear (in)	44.3
Shoulder room front (in)	59.1
Shoulder room rear (in)	57.6
Cargo volume (cu ft)	12.5
Seating capacity	5

## EPA mileage estimates | Capacities

Fuel economy (city/highway/combined)	NA <sup>4</sup>
Engine oil (qt)	8
Fuel (gal)	21.7 <sup>5</sup>
Recommended fuel	Premium

■ Standard □ Available NA Information not available at time of printing

<sup>1</sup> Always obey all speed and traffic laws. <sup>2</sup> Top track speed is electronically limited in the U.S. Always obey all speed and traffic laws. <sup>3</sup> Delayed availability. <sup>4</sup> 2019 EPA estimates not available at time of printing. See [www.fueleconomy.gov](http://www.fueleconomy.gov) for details. Your mileage will vary and depends on several factors, including your driving habits and vehicle condition. <sup>5</sup> Never drive until the tank is completely empty. The irregular supply of fuel that results from that can cause engine misfires. Uncombusted fuel will then enter the exhaust system. This can cause overheating and damage to the catalytic converter.



## Wheels



19" 15-spoke design



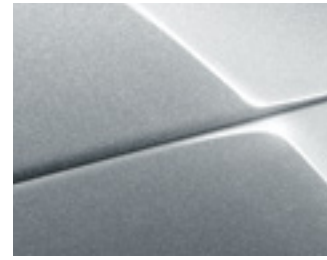
20" 20-spoke-structure design, gray/polished finish



20" Wheel package

## Exterior Colors

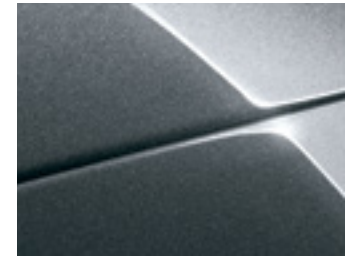
Florett Silver metallic



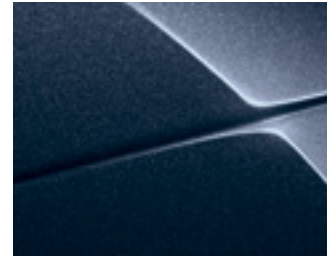
Glacier White metallic



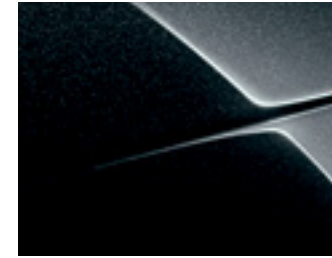
Monsoon Gray metallic



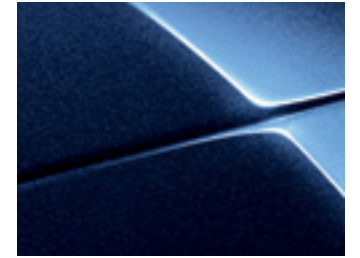
Moonlight Blue metallic



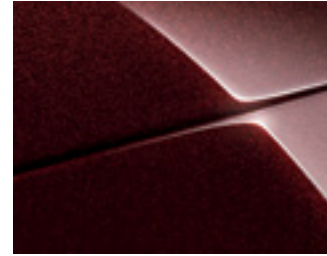
Mythos Black metallic



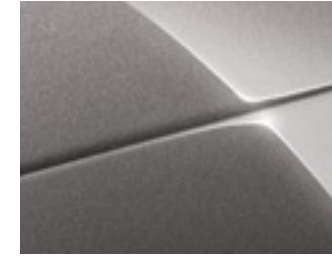
Navarra Blue metallic



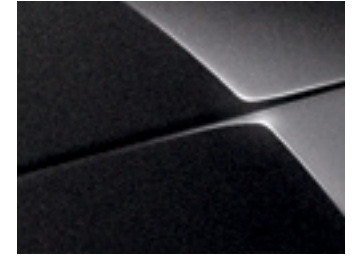
Seville Red metallic



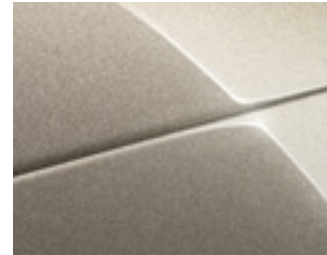
Terra Gray metallic



Vesuvius Gray metallic



Savannah Beige pearl



## Interior Inlays



Dark Brown Walnut Natural Wood/  
Dark Brushed Matte Aluminum



Standard

Gray/Brown Eucalyptus Natural Wood/  
Dark Brushed Matte Aluminum



Optional

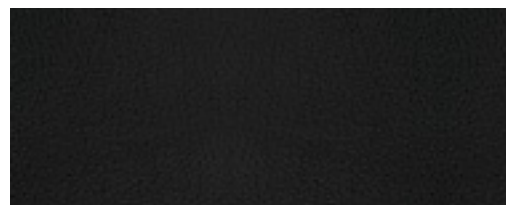
Gray/Brown Fine Grain Natural Wood/  
Dark Brushed Matte Aluminum



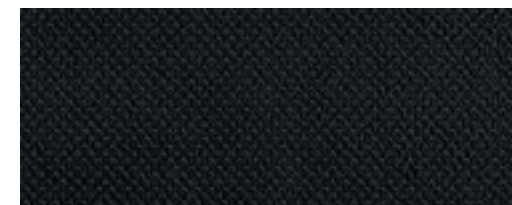
Optional

## Interior Colors

Black Valetta leather

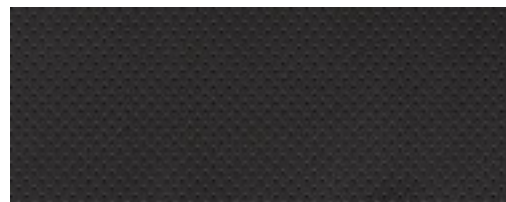


Black Perforated Valetta leather



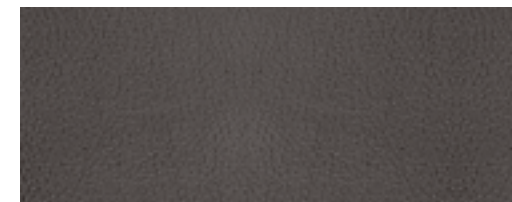
Executive package

Black Perforated Valcona leather

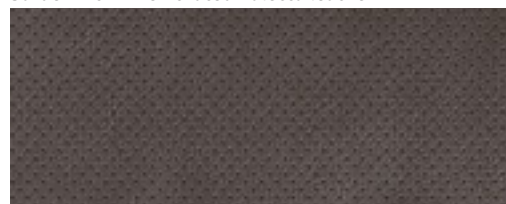


Luxury package

Sarder Brown Valetta leather

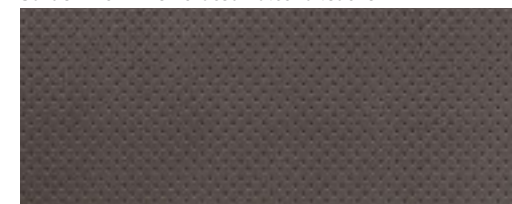


Sarder Brown Perforated Valetta leather



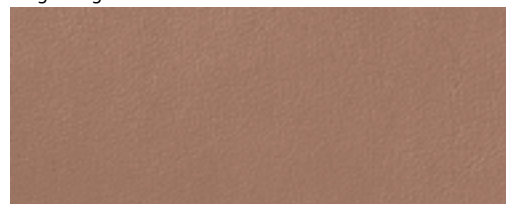
Executive package

Sarder Brown Perforated Valcona leather

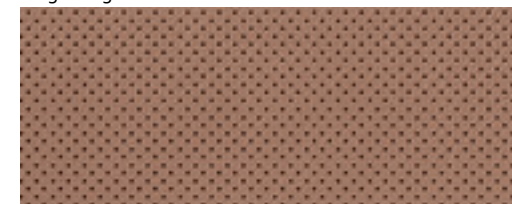


Luxury package

Saiga Beige Valetta leather

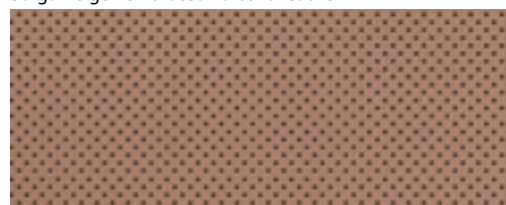


Saiga Beige Perforated Valetta leather



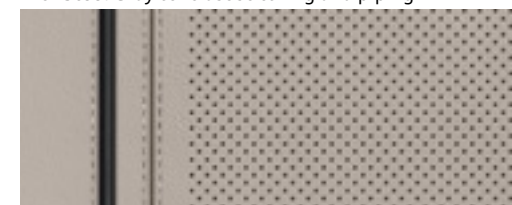
Executive package

Saiga Beige Perforated Valcona leather



Luxury package

Pearl Beige Perforated Valcona leather  
with Steel Gray contrast stitching and piping



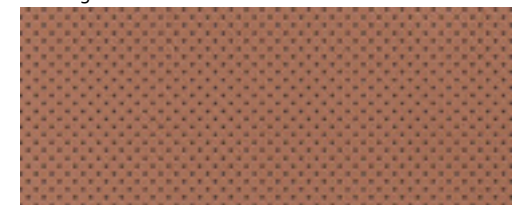
Design package advanced

Sarder Brown Perforated Valcona leather  
with Steel Gray contrast stitching



Design package

Nutmeg Brown Perforated Valcona leather



Luxury package