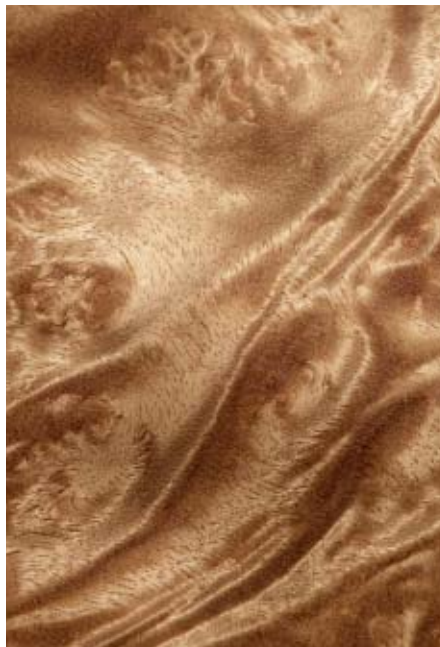


# Audi exclusive

---

*More variety. More colour.*



# Audi exclusive.

*An individual vehicle for  
your unique personality.*

Audi drivers want something special. Audi exclusive allows you to transform something special into something truly personal.

In the following pages, we'd like to demonstrate the extent to which Audi exclusive can cater to your individual preferences. How we turn your dream colour into a paint finish. How we turn a striking wood into an interior inlays. And a fine leather into your favourite seat.

Stay individual. Stay exclusive.



***In dialogue: Audi QR codes***

*Get up close and personal with Audi exclusive: download a QR app to your smartphone, then scan in the QR code or paste the following link into your browser:*

*[www.audi.com/exclusivefilm](http://www.audi.com/exclusivefilm)*

## Contents

Leather	04	Audi exclusive line	24
Wood and inlays	08	Audi exclusive	26
Colours and paint finishes	12	Audi exclusive concept	38
Manufacturing	16	Audi exclusive leather	40
Inspiration	18	Audi exclusive inlays	42
Our customers	20	Audi exclusive customised paint finishes	44
		Audi Sport light-alloy wheels	46



When covering seats or interior elements with leather, we know that certain steps are best left to expert craftsmen.

## The look. The feel.

*Always striking.*

Leather is a unique product of nature. Its very touch and feel triggers a relaxing sensation – and also raises the prospect of a trip to remember. Laying eyes on it is always a pleasure: its soft texture seems to gleam in the light. As a seat in your Audi, a piece of leather becomes synonymous with exclusive comfort.

No two pieces are alike – a fact which fits perfectly with the Audi exclusive philosophy. And needless to say, we pay great attention to ensuring that the pieces crafted for the interior of an Audi are perfectly coordinated. The seat leather used in an Audi is primarily crafted from the hides of bulls raised in Southern Europe. Thanks to delicate processing, including the use of vegetable tanning agents, its natural beauty is retained, resulting in the creation of a material that is hard-wearing, highly emotive and long-lasting.

Once tanned, the leather undergoes a refinement process. An ultra-thin varnish makes the leather much more resistant to wear.

Each piece of leather destined to appear in an Audi first has to pass over 30 different tests. Aspects such as the leather's abrasion resistance, non-fade properties, shrinkage behaviour, resistance to bending, tensile strength, emissions and burning behaviour are determined in laboratory tests. Only when all tests have been passed is it deemed suitable for use in seats and interior fittings.

The tests are conducted over the course of a year and are ultimately designed to guarantee the remarkable sensation of opening the door of your Audi to the inspiring appearance and feel of leather – a thrill that never fades over time.

This sensation can be heightened even further should you opt for leather upholstery and trim from Audi exclusive. Simply let your fantasy run wild. It's possible, for example, to have the steering wheel covered in a different colour leather to that used on the seats – or even only parts of the seats.

Select the colour of your dreams from the huge range of leather colours available. Furthermore, you are also free to choose the colour of the contrast stitching, the carpet, the floor mat edging or the seatbelts. If you opt for seat upholstery made from an Alcantara/leather combination we also offer a large range of colours. Add a completely individual touch of character to your Audi.

**1** *With a huge passion for detail, the bulk of the stitching on Audi exclusive steering wheels is completed by hand.*

**2** *The leather for the seats and interior fittings is carefully examined and tested – to add that immaculate touch of beauty to your Audi.*

**3** *The range of interior colours is almost unlimited. You can even select your own contrasting stitching.*



# Designed by nature.

# Crafted with the utmost precision.

*Just to make your dream come true.*

Of all the materials known to man, only wood can lend such a unique atmosphere. When you run your fingers along a fine-pored inlay, you can immediately sense the exclusivity, sophisticated quality and – above all – the time and effort needed to create an object of such beauty.

As a matter of principle, Audi refrains from using tropical wood, even that which was grown on a plantation. Instead, it relies on selected woods that perfectly emphasise the respective character of the vehicle. The range of woods used extends from classic oak to striking varieties of myrtle burr or tamo ash, or even wood with a black piano finish. The benefit to you: more exclusivity and a huge selection. In addition to the various types of wood, you can also choose between highly unusual colours and grains.

One such grain is the open-pored tamo ash, natural dark brown. It grows in Japan and Russia, and offers a striking wave pattern – a look that perfectly comes to the fore in an inlay. The texture of the wood can be both seen and felt. This transforms the interior into a uniquely tranquil zone with a comfortable atmosphere.

*Every tree is unique – just like the inlay it is used to create. This means that your Audi not only makes a personal statement, but is also one of a kind.*





*Inlay in aluminium/Beaufort wood, black*

Thanks to their striking design, the inlays in aluminium/Beaufort wood, black, are incredibly eye-catching.

The thin layers of veneer for the inlays are peeled from trunks and root burs. To ensure the individual parts match, a set of fittings for a vehicle generally comes from a single burr or trunk.

Needless to say, it is crucial that the cutting process takes account of the special features of the vehicle's interior. The shape of the centre console presents a particular challenge – one that has to be overcome each time anew. Its design varies from model to model and requires special recesses, depending on

the equipment. The manufacturing process involves a delicate symbiosis between craftsmanship and machining. Some steps – such as milling – use both methods, whereas others are performed entirely manually.

Sometimes even more production steps prove necessary, for example when creating the aluminium/Beaufort wood, black inlay. To fabricate this inlay, five thin layers of wood veneer and a 0.4-mm layer of aluminium are glued together to create a 5-mm-thick block. Several of these blocks are then

bonded and cut vertically, leading to the emergence of this exciting blend of black wood and striking aluminium.

The finished product is then subjected to a stringent quality inspection. Ultraviolet light is used to check for any cracks or pockets and to verify that the paint is up to standard. This is how Audi ensures outstanding quality, meaning you get to enjoy a uniform grain, an even colouration and the gratifying feeling of owning a truly unique vehicle – your Audi.

# The world is awash with colour.

*Choose your favourite.*



The golden hue of a sunset, the red of a fine wine, the green of an emerald ring – all of these colours are available for your Audi's paint finish. As well as practically every other colour imaginable – just bring a sample of your ideal colour to your Audi partner.

Naturally, we already have a huge selection of existing paint finish colours for you to choose from. Simply select your favourite from over 80 colour tones. How about the exquisite saddle brown, pearl effect, a hue that bestows every vehicle with a special sense of presence? Or maybe you'd prefer the impressive palace blue, pearl effect, a colour reminiscent of wide open spaces and freedom?

No matter which type of paint finish you ultimately choose, you can rest assured that the most stringent manufacturing quality standards are always applied. The desired tone is initially mixed from organic and inorganic colour pigments. Organic pigments ensure radiance and vibrancy, whereas inorganic pigments are extremely age-resistant. This interplay guarantees that your paint finish retains long-lasting colour intensity.

The pigments in the base colours are then individually dispersed in a binding agent to create pastes. The final colour tone emerges by mixing these various colour pigment pastes. The fascinating look of a metallic paint finish is achieved by adding metal flakes to the paint. These flakes are usually made of aluminium, but brass is sometimes also used. When creating a metallic paint finish, great attention has to be paid to ensuring that the metal flakes don't fracture, meaning that the whole process has to be performed very carefully and gently. This is further proof of the exacting standards synonymous with Audi exclusive.

An Audi paint finish consists of four layers which, when combined, are not even as thick as a human hair. The first priming coat protects the body against rust and other signs of ageing. When applying this coat, the vehicle is pulled through the “dip tank” as it rotates, thereby ensuring that every hollow is covered and no millimetre escapes. Once the priming has hardened, it is cleaned with emu feathers. These rotating feathers are used to carefully brush the body down and remove each and every speck of dust.

The second layer of paint is then applied. This is known as the filler coat. This procedure evens out any irregular spots and includes an elastic component to ensure that paint does not chip off should the vehicle ever be hit by a stone, for example.

The third layer is the actual visible colour. While the body receives a coat of your individually mixed colour in the dip tank, coatings are applied with a paint-spraying gun to smaller parts, like the exterior mirrors or the tank cap.

The fourth layer is a clear protective coating that hardens at 140 °C in just half an hour. It protects against UV rays and lends the paint finish its shine and intensity of colour. That way you can enjoy your favourite colour for as long as possible, whether it's sunny yellow, wine red or emerald green.





Many steps in the production process require a particularly fine tool: the human hand.



*Audi exclusive's stitching pattern is created manually with a needle.*

People always have one advantage over machines: awareness. Of course, a robot can also sew a delicate leather seam, but it won't comprehend what it's doing. One strong motivating factor at Audi is that we identify with and take pride in our work. One example of this is the Audi exclusive steering wheel.

You choose a type of wood, as well as a colour for the leather and the contrasting stitching. It's only then that we produce the steering wheel for you and your car. During the process, the wood is re-sanded and polished by hand. Even the leather seams are mostly hand-stitched, creating Audi exclusive's specific stitching pattern.

Quality control is also partially conducted by hand. Of course, we also rely on modern measuring technologies, for instance to ensure that a coat of paint is flawless. But if you want to know if the leather-covered centre console is perfectly mounted, you can feel it for yourself with your own hands.





There is one thing that permeates everything that Audi exclusive does: the quality must be nothing short of outstanding. The famous idea of “Vorsprung durch Technik” has also become something of a leitmotif for Simona: “It’s very much in the DNA of every Audi. So it’s not enough just to make sure the materials we use are excellent; in the spirit of “Vorsprung” we ensure that every step in production meets our high standards, too.” The cooperation between her team and the Audi technical departments is very strict, in order to continuously harness new technologies. “We even blend the colours ourselves to create shades you won’t find anywhere else.” It’s obvious just how much Simona loves what she does. “What’s great

about Audi is that, no matter how impossible a task might seem, we always find a way to present the customer with the ideal solution. Giving up is simply not in our vocabulary.”

So what can we expect from Audi exclusive in the future? Simona is reluctant to give too much away: “The challenge we face is to amaze our customers with a constant stream of new ideas.” Innovative thinking is a standard also in this branch of Audi, of course. Then sometimes it’s exactly the unexpected that makes an Audi what it is. There’s no doubt that Audi exclusive gives you everything you need to unleash your personality and channel it into your own unique Audi.



## “In the end it’s the customer who becomes the designer.”

An Audi exclusive portrait of Simona Falcinella

The passion for the sensuality of the materials has been put in Simona Falcinella’s cradle. Her mother was fashion designer and her father worked in the textile industry. “I have learned at an early age, that you can understand materials only when you touch them. On the tip of our fingers we carry a big knowledge.”

Even after 25 years experience in the field of vehicles individualizing, this knowledge characterizes day by day the work of the Milan-born designer and head of Audi Design Color & Trim department. It’s in her department that the customer’s dream of turning an Audi into his Audi becomes reality. Whether you choose premium quality leather or an extraordinary paint finish, the possibilities for giving your car its own individual character are virtually inexhaustible. Simona explains where the inspiration behind this wealth of custom options comes

from: “Our senses are working all the time – just like a magnet – to latch onto the next spark of inspiration, wherever it may come from. Although an idea will often come from fashion, architecture or art, it might also just be someone’s tie that inspires you to create a decorative interior element.”

But there’s more to it than her own subjective impression. What counts is the ability to put that aside and see things from the customer’s perspective. Simona knows that the Audi exclusive customer doesn’t just individualize his Audi, he rather defines a piece of himself. “In the end it’s the customer who becomes the designer, who puts into reality his personal image of the perfect car. The matter is helping him to identify himself in his Audi, to foresee all the countless possibilities for the Audi quattro customer, so that he can create his ‘perfect car’. Our task is to give him the right tools he needs to do it.” No wonder the



*“The matter is helping him to identify himself in his Audi.”*





## “I find it really exciting to try new things.”

**Focus on Audi exclusive customers: Karl-Ludwig and Anita Z.**

*“You stick with it once you’ve started with it – just like at Audi. From the first Audi exclusive car to the one we have now.”*

Karl-Ludwig Z. took a rather surprising path to becoming an Audi driver: “Back then, one of my colleagues had an A4 TDI, which left the car I had standing on the motorway – even though I had more horsepower and a petrol engine! After that, I wanted to know what was so special about Audi. And since then – that’s what my wife and I drive. It gives me a rush every time I get behind the wheel.”

Karl-Ludwig Z. is a graduate mathematician. Together with his wife Anita and a partner he runs a mid-sized company providing services to the industrial sector. You could say that the passion for detail and perfection runs in his blood. “Yes, that’s true. People always say that about mathematicians – it’s one of our quirks. That’s why I like to drive RS models so much. Their technology is fine-tuned – and exhilarating. But at the same time they’re like a wolf in sheep’s clothing. The insider knows

just what they can do, and for that reason it’s also an understatement at the same time.”

Anita Z. places more emphasis on the exterior: “I find it really exciting to try new things. Over and over again. That’s why I pay attention to the design. When you’ve been doing it for a while, you develop an eye for details. That’s why I can give my husband advice about wheel rim size or paint colour – I tend to have a better feel than he does for what looks good.”

Having said that, Karl-Ludwig Z. also has other reasons for his choice of exterior colour. He prefers grey tones and chooses them from the wide range of Audi exclusive colour options based on his personal taste. “I drive really long distances. After a long journey, the car naturally looks a little different. And grey is a really forgiving colour.”



Although the Z. couple has already outfitted several cars with Audi exclusive features, their anticipation – and their enthusiasm – never wanes. Will the car really look the way they imagined it? Audi has yet to disappoint.

Karl-Ludwig Z. says: “My first Audi was an A6, and I moved relatively quickly to the S and the RS models.” Anita Z.: “For me it was the first-generation R8. The sound of the engine captivated me. Just the way it roared! I had to have it.” The only problem was that she was put off by the dark sideblade. Her Audi partner let her know about Audi exclusive and the Audi exclusive Studio in Neckarsulm. There, the black sideblade was turned into a grey one – and the couple into loyal customers.

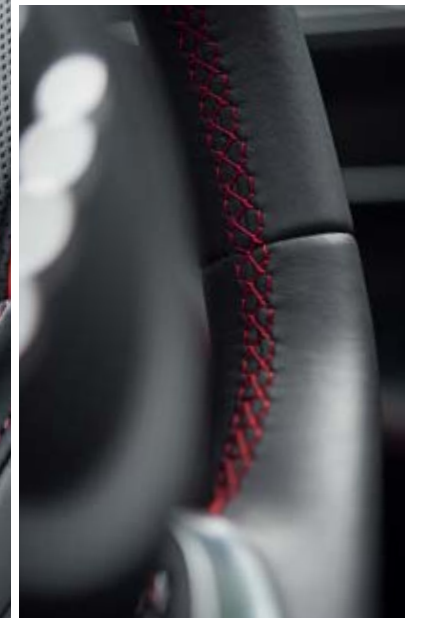
First they enhanced their vehicles with the styling package, then with a customised paint finish. The couple came to Neckarsulm with a few ideas in mind and were advised further. There, with the aid of material and

paint samples, the new black-red interior equipment of their last TT RS took shape. “We always find bold colour combinations here that we wouldn’t think of ourselves. I also recommend it to our friends. And I really like the friendly atmosphere. They know us really well here,” says Anita Z., who could hardly suppress tears of joy as she stepped into her TT RS for the first time. “It’s even more beautiful than I imagined.”

Will they ever buy another Audi without exclusive equipment? Neither of them thinks so: “You stick with it once you’ve started. Just like with Audi.” Karl-Ludwig Z.: “Actually, after the RS 5 I thought I didn’t want another RS model. Then I saw the then-current RS 4 Avant. And I thought, we’ve gone without long enough. I took my first holiday at the age of 46. An Audi with exclusive features is a reward I can look forward to. It’s impressive every time – and each drive is something very special.”

# Exclusivity knows no compromise.

*Just endless variety.*



### Audi exclusive line

Every Audi is built just for you: it has the exact features and engine that you've chosen. The Audi exclusive line offers you access to individualized driving. We've also compiled a harmonious collection of interior trims and materials for you. That way, your Audi truly becomes your very own personal Audi.

### Audi exclusive

For anyone who would like to turn their Audi into an unmistakably unique Audi, the combinations are nearly endless. Put together your very special Audi from our selected trims, leather colours and customised paint finishes.

### Audi exclusive concept

You can count on the exclusivity of the Audi exclusive concept. And we mean that literally: Audi exclusive concept equipment packages are strictly limited. Fine leather and distinctive trims, combined with a striking paint finish – it really is something special to drive an Audi.



The options on the following pages are just a sampling of those available from Audi exclusive. More information is available from your Audi partner.

## Experience the exceptional.

Audi exclusive line | Audi A6

- *Black interior*
- *Headlining in cloth, black*
- *Customised contour seats, front (optional with seat ventilation, front); seat side bolsters and head restraints in Valcona leather, alabaster white with contrasting stitching in powder beige*
- *Seat centre panel in perforated leather (with Audi exclusive line-specific perforation) in alabaster white with accordion pleat in powder beige; backrest cover and seat attachments colour-coordinated in alabaster white*
- *Door trim inserts in leather, alabaster white*
- *Armrests in the doors and centre armrest in leather, alabaster white with contrasting stitching in powder beige*
- *Inlays in eucalyptus, natural*
- *Door sill trims with Audi exclusive line logo*
- *Floor mats, black with edging and stitching in alabaster white*



Some of the equipment illustrated or described is optional equipment for which an extra charge is made. Please contact your Audi partner or visit [www.audi.com](http://www.audi.com) for detailed information about standard and optional equipment.

The figures for fuel consumption and CO<sub>2</sub> emissions can be found on the back cover.

## Exclusivity, above all.

Audi exclusive | Audi A4 Avant

- Audi exclusive customised paint finish in Amalfi white
- Audi Sport cast aluminium wheels in 10-V-spoke design, gloss turned finish<sup>1</sup>, size 8.5 J x 19 with 245/35 R 19 tyres<sup>2</sup>
- Leather upholstery and trim (package 1) in Audi exclusive fine Nappa leather in saddle brown/alabaster white with contrasting stitching in alabaster white; seats and centre armrest in leather, saddle brown with contrasting stitching in alabaster white, outer seat centre panels in leather, alabaster white, and door trim inserts in Alcantara, saddle brown
- Audi exclusive extended leather upholstery and trim in saddle brown with contrasting stitching in alabaster white
- Audi exclusive seat attachments colour-coordinated in saddle brown
- Controls in Audi exclusive leather/Alcantara in black/saddle brown with contrasting stitching in alabaster white; stitching on steering wheel rim with specific Audi exclusive seam detail
- Audi exclusive inlays painted in Amalfi white
- Audi exclusive floor mats in black with piping in saddle brown and leather edging as well as stitching in alabaster white



Some of the equipment illustrated or described is optional equipment for which an extra charge is made. Please contact your Audi partner or visit [www.audi.com](http://www.audi.com) for detailed information about standard and optional equipment.

The figures for fuel consumption and CO<sub>2</sub> emissions can be found on the back cover.

<sup>1</sup> Please note the special information relating to wheels in the back of the catalogue.

<sup>2</sup> You will find specifications on the technical characteristics of tyres in the back of the catalogue.

## Individuality shines through in every single detail.

### Audi exclusive | Audi S7 Sportback

- Audi exclusive customised paint finish in night blue, pearl effect
- Audi Sport cast aluminium wheels in 5-twin-spoke design, size 9 J x 20 with 265/35 R 20 tyres<sup>1</sup>
- Headlining in Audi exclusive Alcantara, black with contrasting stitching in cognac
- Audi exclusive leather upholstery and trim (package 2) in Valcona leather, cognac/night blue with contrasting stitching in night blue/cognac on S sport seats, front; seat centre panel, centre armrest, door trim inserts, lower part of centre console as well as armrests in the doors in Valcona leather, night blue with contrasting stitching in cognac
- Audi exclusive extended leather package with dashboard underside including glove compartment, storage compartment on driver side and centre console in leather, night blue with contrasting stitching in cognac
- Audi exclusive leather-covered seat trims in night blue with contrasting stitching in cognac
- Audi exclusive seat belts in cognac
- Controls in Audi exclusive Valcona leather: leather-covered steering wheel rim and selector lever in cognac with contrasting stitching in night blue; airbag cover in leather, night blue with contrasting stitching in cognac; stitching on the steering wheel rim with specific Audi exclusive seam detail
- Audi exclusive inlays in vavona, bronze
- Audi exclusive carpet and floor mats in night blue as well as leather edging and stitching in cognac



Some of the equipment illustrated or described is optional equipment for which an extra charge is made. Please contact your Audi partner or visit [www.audi.com](http://www.audi.com) for detailed information about standard and optional equipment.

The figures for fuel consumption and CO<sub>2</sub> emissions can be found on the back cover.

<sup>1</sup>You will find specifications on the technical characteristics of tyres at the back of the catalogue.

## The art of distinction.

Audi exclusive | Audi A8 L

- Audi exclusive customised paint finish in indium grey, metallic
- Audi Sport cast aluminium wheels in 10-V-spoke design, gloss turned finish<sup>1</sup>, size 9 J x 21 with 275/35 R 21 tyres<sup>2</sup>
- Audi exclusive black styling package
- Audi exclusive leather upholstery and trim (package 4) in Valcona leather, black/powder beige with contrasting stitching in powder beige/black on comfort sport seats, front with individual seat package, rear; surrounding band, accordion pleat, centre armrest, armrests in the doors, door trim inserts, lower part of centre console including knee pad, underside of instrument panel including glove compartment as well as steering column trim in powder beige with contrasting stitching in black; remaining items in black, contrasting stitching in powder beige
- Controls in Audi exclusive leather in black with contrasting stitching in powder beige; stitching on steering wheel rim with specific Audi exclusive seam detail
- Upper inlays in piano finish, black; lower inlays in brushed aluminium, silver
- Audi exclusive carpet and floor mats in powder beige with leather edging and stitching in black
- Audi exclusive coolbox in the rear



Some of the equipment illustrated or described is optional equipment for which an extra charge is made. Please contact your Audi partner or visit [www.audi.com](http://www.audi.com) for detailed information about standard and optional equipment.

The figures for fuel consumption and CO<sub>2</sub> emissions can be found on the back cover.

<sup>1</sup> Please note the special information relating to wheels in the back of the catalogue.

<sup>2</sup> You will find specifications on the technical characteristics of tyres in the back of the catalogue.



## True greatness comes through in the detail.

Audi exclusive | Audi Q7

- Audi exclusive customised paint finish in dark sapphire, pearl
- Audi Sport cast aluminium wheels in 5-twin-spoke design, size 9.5 J x 21 with 285/40 R 21 tyres<sup>1</sup>
- Audi exclusive leather upholstery and trim (package 4) in Valcona leather on customised contour seats, front in night blue/magnolia with contrasting stitching in magnolia/night blue; seat centre panel including inside seat side bolsters, centre armrest, door trim inserts, door pull handles, armrests in the doors, lower door trim, trim for centre console, front, and underside of instrument panel in magnolia, contrasting stitching in night blue; remaining items in night blue, contrasting stitching in magnolia
- Controls in Audi exclusive leather in night blue with contrasting stitching in magnolia; stitching on steering wheel rim with specific Audi exclusive seam detail
- Audi exclusive lower inlays in tamo ash, natural dark brown
- Audi exclusive carpet and floor mats in night blue with leather edging and stitching in magnolia



Some of the equipment illustrated or described is optional equipment for which an extra charge is made. Please contact your Audi partner or visit [www.audi.com](http://www.audi.com) for detailed information about standard and optional equipment.

The figures for fuel consumption and CO<sub>2</sub> emissions can be found on the back cover.

<sup>1</sup>You will find specifications on the technical characteristics of tyres at the back of the catalogue.

## More desirable than ever.

Audi exclusive | Audi TTS Roadster

- Audi exclusive customised paint finish in tornado red
- Audi Sport forged aluminium wheels in 10-Y-spoke design, size 9 J x 20 with 255/30 R 20 tyres<sup>1</sup>
- Audi exclusive black styling package
- Audi exclusive leather upholstery and trim (package 1) in fine Nappa leather in crimson red/black with contrasting stitching in crimson red (door trim inserts in Alcantara, black); shoulder section and head restraints in fine Nappa leather, crimson red; floor mats, black with leather edging and stitching in crimson red
- Controls in Audi exclusive leather: steering wheel rim, selector lever knob and selector lever gaiter trimmed in leather, black, lower inserts on steering wheel in crimson red; stitching on steering wheel rim in crimson red with specific Audi exclusive seam detail



Some of the equipment illustrated or described is optional equipment for which an extra charge is made. Please contact your Audi partner or visit [www.audi.com](http://www.audi.com) for detailed information about standard and optional equipment.

The figures for fuel consumption and CO<sub>2</sub> emissions can be found on the back cover.

<sup>1</sup>You will find specifications on the technical characteristics of tyres at the back of the catalogue.

## The ultimate in exclusivity.

Audi exclusive | Audi R8 Coupé V10 plus

- Audi exclusive customised paint finish in Nardo grey with sideblades in Vegas yellow
- Forged aluminium wheels in 10-spoke Y design in gloss anthracite black, size 8.5 J x 20 at front, 11 J x 20 at rear, with 245/30 R 20 tyres<sup>1</sup> at front, 305/30 R 20 tyres<sup>1</sup> at rear
- Audi exclusive exterior mirror housings in gloss carbon
- Audi exclusive exterior package in gloss carbon
- Headlining in Audi exclusive Alcantara, in jet grey with contrasting stitching in calendula yellow
- Audi exclusive full-leather upholstery and trim in fine Nappa leather, jet grey/black, perforated, with contrasting stitching in calendula yellow on R8 bucket seats
- Audi exclusive seat backrest covers painted in Vegas yellow, matt effect
- Audi exclusive air vents painted in Vegas yellow, matt effect
- Controls in Audi exclusive leather in jet grey with contrasting stitching in calendula yellow; stitching on steering wheel rim with specific Audi exclusive seam detail
- Floor mats in jet grey with leather edging and stitching in calendula yellow
- Audi exclusive door sill trims in gloss carbon with illuminated aluminium inlay



Some of the equipment illustrated or described is optional equipment for which an extra charge is made. Please contact your Audi partner or visit [www.audi.com](http://www.audi.com) for detailed information about standard and optional equipment.

The figures for fuel consumption and CO<sub>2</sub> emissions can be found on the back cover.

**Sporty driving:** Models from quattro GmbH are developed and produced for driving on public roads. Compared to normal road use, vehicles are put under significantly more stress than when used on racetracks or other closed circuits (e.g. during driver training, driving courses, track days). The engine, transmission, clutch and powertrain in particular as well as the suspension, brake system and tyres are subjected to a particularly high load. This can lead to increased wear. Special information about driving the vehicle on racetracks or other closed circuits is available in the onboard literature or from your Audi partner.

<sup>1</sup>You will find specifications on the technical characteristics of tyres at the back of the catalogue.

## Dazzling character.

### A8 Audi exclusive concept

- Audi exclusive customised paint finish in mineral grey, metallic
- Leather upholstery and trim by Poltrona Frau in the colour Agatha cognac and Valcona leather in granite grey with Agatha cognac diamond pattern on the seat centre panel
- Seat side bolsters with Poltrona Frau embossing
- Inlays in fine grain birch, olive-patterned natural silver brown
- Headlining in Alcantara snow white
- Audi exclusive carpet and floor mats in jet grey; leather edging on the floor mats from Poltrona Frau in the colour Agatha cognac with jet grey contrasting stitching
- Audi exclusive seat belts in the colour Agatha cognac
- Audi exclusive concept door sill trims with corresponding numbering (1/50)
- Includes leather care set



Some of the equipment illustrated or described is optional equipment for which an extra charge is made. Please contact your Audi partner or visit [www.audi.com](http://www.audi.com) for detailed information about standard and optional equipment.

The figures for fuel consumption and CO<sub>2</sub> emissions can be found on the back cover.

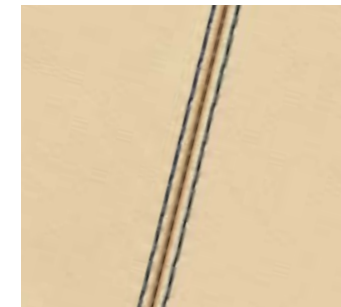
## Harmony and elegance.

*With sporty details.*

Audi exclusive offers you a wide selection of colours in the grades Alcantara, fine Nappa leather and Valcona leather. From elegant alabaster white to sporty crimson red to subtle night blue, we have something to suit every taste. To add a special touch: in addition to the leather colour, you are also free to choose the colour for the contrasting stitching.



Alabaster white



Magnolia



Calendula yellow



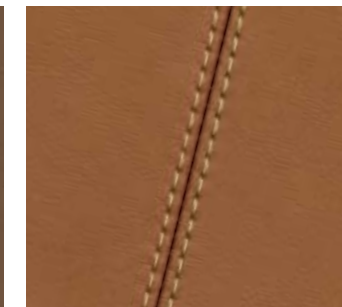
Powder beige



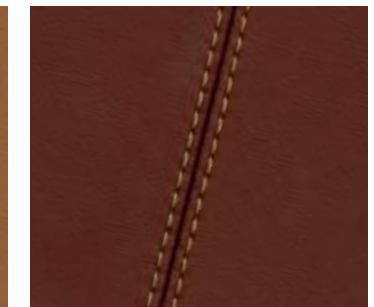
Sand beige



Havana brown



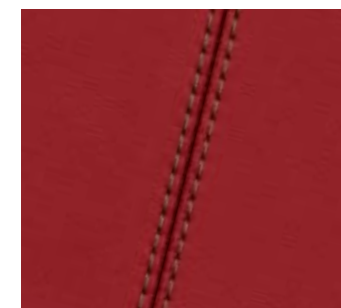
Cognac



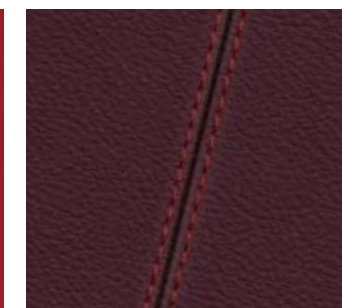
Saddle brown



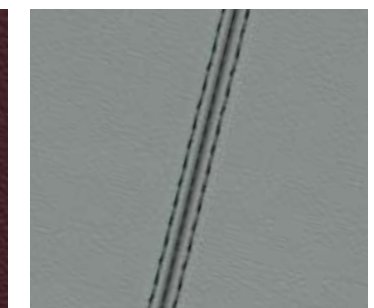
Chestnut brown



Crimson red



Classic red



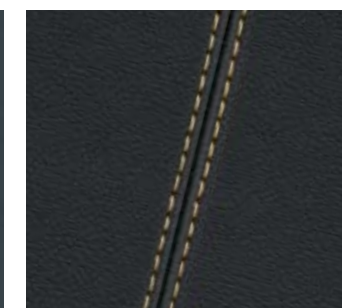
Cloudy grey



Jet grey



Smoky blue



Night blue



Iceland green

Ask your Audi partner which leathers are available for your car.



## Nature and beauty.

*Perfection you can feel.*

Every Audi has a personality of its own – and the inlays emphasise that personality. For example, you can decide on the warm, smooth oak sepia. Or let yourself be carried away by the open-pored tamo ash, natural

dark brown, whose wood structures you can feel. Or make a personal statement with the novel aluminium/Beaufort wood, black inlay, which is made from a combination of fine wood veneer and aluminium strips.



*Fine grain myrtle, nutmeg brown*



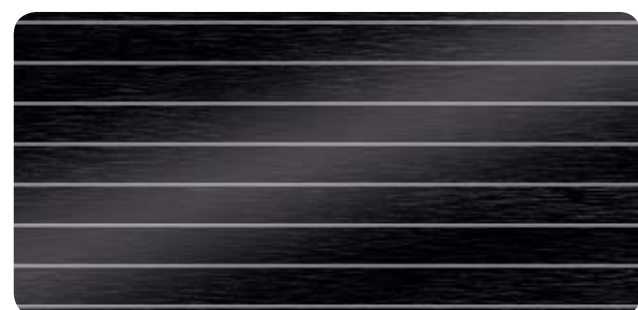
*Oak, sepia*



*Fine grain ash, nougat*



*Modrone, gold*



*Aluminium/Beaufort wood, black*



*Piano finish, black*



*Tamo ash, natural dark brown*



*Vavona, bronze*

Ask your Audi partner which inlays are available for your car.



## Radiance and individuality.

*An irresistible look.*

You only get one chance to make a first impression. Make the best of it with your choice of exterior paint finish from Audi exclusive's large selection. We will gladly accept your requests for further colours.

Ask your Audi partner which paint finishes are available for your car.

## Dynamic and attractive.

*Thrilling - even at a standstill.*

The finishing touch that makes your Audi complete: Audi Sport light-alloy wheels. An elaborate casting process ensures excellent

rigidity, and the fine multi-coat paint creates not just a brilliant visual effect, but also offers effective protection against scratches.





5-arm turbine design in magnesium look, gloss turned finish<sup>1</sup> 5-V-spoke star design in matt titanium look, gloss turned finish<sup>1</sup> 5-arm structured design 5-arm pylon design in matt titanium look, gloss turned finish<sup>1</sup> 5-arm pylon design in black matt, gloss turned finish<sup>1</sup> 5-twin-spoke design 5-twin-spoke offroad design 5-arm offroad design 5-arm offroad design in matt titanium look, gloss turned finish<sup>1</sup> 5-arm rotor design in matt titanium look, gloss turned finish<sup>1</sup> 5-arm rotor design in gloss anthracite black, gloss turned finish<sup>1</sup> 5-arm polygon design 5-arm wing design in gloss titanium look, gloss turned finish<sup>1</sup> 10-spoke design 10-spoke design in matt titanium look, gloss turned finish<sup>1</sup> 10-V-spoke design 7-twin-spoke design 5-V-spoke design in matt titanium look, gloss turned finish<sup>1</sup> 10-Y-spoke design 5-twin-spoke design 5-twin-spoke design in matt titanium look, gloss turned finish<sup>1</sup> 5-spoke blade design 5-spoke blade design in matt titanium look, gloss turned finish<sup>1</sup>

Audi A1/S1 Audi A1/S1 Sportback												7.5 J x 18 with 225/35 R 18 tyres <sup>2,8</sup>	7.5 J x 17 <sup>4</sup> with 215/40 R 17 tyres <sup>2,8</sup>				7.5 J x 18 <sup>4</sup> with 225/35 R 18 tyres <sup>2</sup>	7.5 J x 17 <sup>4,5</sup> with 215/40 R 17 tyres <sup>2</sup>							
Audi A3/S3 Audi A3/S3 Sportback	7.5 J x 18 with 225/40 R 18 tyres <sup>2,3</sup>		7.5 J x 17 <sup>4</sup> with 225/45 R 17 tyres <sup>2</sup>					8 J x 19 <sup>5</sup> with 235/35 R 19 tyres <sup>2,4</sup>				8 J x 19 with 235/35 R 19 tyres <sup>2,6</sup>		7.5 J x 18 with 225/40 R 18 tyres <sup>2</sup>	7.5 J x 18 with 225/40 R 18 tyres <sup>2</sup>		8 J x 19 with 235/35 R 19 tyres <sup>2,8</sup>								
Audi A3/S3 Saloon Audi A3/S3 Cabriolet	8 J x 18 with 225/40 R 18 tyres <sup>2,3</sup>		8 J x 18 with 225/40 R 18 tyres <sup>2</sup>					8 J x 19 <sup>5</sup> with 235/35 R 19 tyres <sup>2</sup>				8 J x 19 with 235/35 R 19 tyres <sup>2</sup>		8 J x 18 with 225/40 R 18 tyres <sup>2</sup>	8 J x 18 with 225/40 R 18 tyres <sup>2</sup>		8 J x 19 with 235/35 R 19 tyres <sup>2</sup>								
Audi A4/S4 Saloon Audi A4/S4 Avant	8 J x 18 <sup>4</sup> with 245/40 R 18 tyres <sup>2,3</sup>		8 J x 18 <sup>4</sup> with 245/40 R 18 tyres <sup>2</sup>					8.5 J x 19 <sup>5</sup> with 245/35 R 19 tyres <sup>2</sup>						8.5 J x 19 <sup>9</sup> with 245/35 R 19 tyres <sup>2</sup>			8.5 J x 19 with 245/35 R 19 tyres <sup>2</sup>	8 J x 18 <sup>4</sup> with 245/40 R 18 tyres <sup>2</sup>	8 J x 18 <sup>4</sup> with 245/40 R 18 tyres <sup>2</sup>						
Audi A4 allroad quattro	7.5 J x 18 with 245/45 R 18 tyres <sup>2</sup>																	8 J x 19 with 245/40 R 19 tyres <sup>2</sup>							
Audi A5/S5 Coupé Audi A5/S5 Cabriolet Audi A5/S5 Sportback	8.5 J x 19 <sup>6</sup> with 255/35 R 19 tyres <sup>2,3</sup>		8.5 J x 19 <sup>5</sup> with 255/35 R 19 tyres <sup>2</sup>											8.5 J x 19 <sup>9</sup> with 255/35 R 19 tyres <sup>2</sup>										8.5 J x 19 with 255/35 R 19 tyres <sup>2</sup>	
Audi A6/S6 Saloon Audi A6/S6 Avant	8.5 J x 19 with 255/40 R 19 tyres <sup>2,3</sup>			8 J x 18 <sup>4</sup> with 245/45 R 18 tyres <sup>2</sup>								8.5 J x 19 with 255/40 R 19 tyres <sup>2</sup>	8.5 J x 19 with 255/40 R 19 tyres <sup>2</sup>		8 J x 18 <sup>4</sup> with 245/45 R 18 tyres <sup>2</sup>		8.5 J x 19 with 255/40 R 19 tyres <sup>2</sup>	8.5 J x 20 with 255/35 R 20 tyres <sup>2</sup>	8.5 J x 20 with 255/35 R 20 tyres <sup>2</sup>	8.5 J x 20 with 255/35 R 20 tyres <sup>2</sup>	9 J x 21 with 265/30 R 21 tyres <sup>2</sup>	9 J x 21 with 265/30 R 21 tyres <sup>2,11</sup>			
Audi A6 allroad quattro	8.5 J x 19 with 255/45 R 19 tyres <sup>2</sup>				8.5 J x 19 with 255/40 R 19 tyres <sup>2</sup>							8.5 J x 19 with 255/45 R 19 tyres <sup>2</sup>	8.5 J x 19 with 255/45 R 19 tyres <sup>2</sup>					8.5 J x 19 with 255/45 R 19 tyres <sup>2</sup>	8.5 J x 20 with 255/40 R 20 tyres <sup>2</sup>	8.5 J x 20 with 255/40 R 20 tyres <sup>2</sup>					
Audi A7/S7 Sportback	9 J x 20 with 265/35 R 20 tyres <sup>2,3</sup>													9 J x 21 <sup>9</sup> with 275/30 R 21 tyres <sup>2</sup>	9 J x 19 <sup>4</sup> with 255/40 R 19 tyres <sup>2</sup>		9 J x 19 <sup>4</sup> with 255/40 R 19 tyres <sup>2</sup>	9 J x 20 <sup>10</sup> with 265/35 R 20 tyres <sup>2</sup>	9 J x 20 with 265/35 R 20 tyres <sup>2</sup>	9 J x 20 with 265/35 R 20 tyres <sup>2</sup>	9 J x 20 with 265/35 R 20 tyres <sup>2</sup>	9 J x 20 with 265/35 R 20 tyres <sup>2</sup>	9 J x 20 with 265/35 R 20 tyres <sup>2</sup>		
Audi A8/A8 L/A8 L W12/S8	9 J x 20 with 265/40 R 20 tyres <sup>2,3</sup>								9 J x 21 with 275/30 R 21 tyres <sup>2,7</sup>					9 J x 21 <sup>9</sup> with 275/35 R 21 tyres <sup>2</sup>	9 J x 19 <sup>4</sup> with 255/45 R 19 tyres <sup>2</sup>		9 J x 19 <sup>4</sup> with 255/45 R 19 tyres <sup>2</sup>	9 J x 20 <sup>10</sup> with 265/40 R 20 tyres <sup>2</sup>	9 J x 20 with 265/40 R 20 tyres <sup>2</sup>	9 J x 20 with 265/40 R 20 tyres <sup>2</sup>	9 J x 20 with 265/40 R 20 tyres <sup>2</sup>	9 J x 20 with 265/40 R 20 tyres <sup>2</sup>	9 J x 20 with 265/40 R 20 tyres <sup>2</sup>	9 J x 20 with 265/40 R 20 tyres <sup>2</sup>	
Audi TT/TTS Coupé Audi TT/TTS Roadster	9 J x 19 with 245/35 R 19 tyres <sup>2,3</sup>													8.5 J x 18 <sup>4</sup> with 245/40 R 18 tyres <sup>2</sup>	9 J x 20 with 255/30 R 20 tyres <sup>2</sup>		9 J x 20 <sup>10,11</sup> with 255/30 R 20 tyres <sup>2</sup>	9 J x 19 with 245/35 R 19 tyres <sup>2</sup>	9 J x 19 with 245/35 R 19 tyres <sup>2</sup>	9 J x 19 with 245/35 R 19 tyres <sup>2</sup>	9 J x 19 with 245/35 R 19 tyres <sup>2</sup>	9 J x 19 with 245/35 R 19 tyres <sup>2</sup>	9 J x 19 with 245/35 R 19 tyres <sup>2,11</sup>		
Audi Q2	7 J x 18 <sup>5</sup> with 215/50 R 18 tyres <sup>2,3</sup>						7 J x 18 <sup>5</sup> with 215/50 R 18 tyres <sup>2</sup>												8 J x 19 with 235/40 R 19 tyres <sup>2,11</sup>						
Audi Q3	8.5 J x 19 with 255/40 R 19 tyres <sup>2,3</sup>		8 J x 18 with 235/50 R 18 tyres <sup>2</sup>		7 J x 18 with 235/50 R 18 tyres <sup>2</sup>	8.5 J x 19 with 255/40 R 19 tyres <sup>2</sup>	7 J x 18 with 235/50 R 18 tyres <sup>2</sup>		8.5 J x 20 with 255/35 R 20 tyres <sup>2,7,8</sup>					8.5 J x 19 with 255/40 R 19 tyres <sup>2</sup>			8.5 J x 20 with 255/35 R 20 tyres <sup>2</sup>	8.5 J x 19 with 255/40 R 19 tyres <sup>2,12</sup>							
Audi Q5/SQ5	8 J x 20 with 255/45 R 20 tyres <sup>2,3</sup>							8 J x 20 <sup>5</sup> with 255/45 R 20 tyres <sup>2</sup>		8 J x 20 <sup>5</sup> with 255/45 R 20 tyres <sup>2</sup>		8.5 J x 21 <sup>4</sup> with 255/40 R 21 tyres <sup>2</sup>						8 J x 20 <sup>5</sup> with 255/45 R 20 tyres <sup>2</sup>							
Audi Q7/SQ7	9 J x 20 with 285/45 R 20 tyres <sup>2</sup>	10 J x 22 with 285/35 R 22 tyres <sup>2,6</sup>								9 J x 20 with 285/45 R 20 tyres <sup>2</sup>					8.5 J x 19 <sup>4</sup> with 255/55 R 19 tyres <sup>2</sup>		9 J x 20 with 285/45 R 20 tyres <sup>2</sup>	9.5 J x 21 with 285/40 R 21 tyres <sup>2</sup>	9.5 J x 21 with 285/40 R 21 tyres <sup>2</sup>	9.5 J x 21 with 285/40 R 21 tyres <sup>2</sup>	9.5 J x 21 with 285/40 R 21 tyres <sup>2</sup>	9.5 J x 21 with 285/40 R 21 tyres <sup>2</sup>	9.5 J x 21 with 285/40 R 21 tyres <sup>2,11</sup>		

<sup>1</sup>Special information about the wheels: Wheels with gloss turned finish as well as polished or partly polished aluminium wheels must not be used in wintry road conditions. For manufacturing reasons, the rim surface does not have sufficient corrosion protection for such use and can be damaged permanently by road salt or similar. <sup>2</sup>You will find specifications on the technical characteristics of tyres on the back cover. <sup>3</sup>Can only be ordered in conjunction with quattro permanent all-wheel drive. <sup>4</sup>Not available for S models. <sup>5</sup>For information on when this vehicle will be available, please contact your Audi partner. <sup>6</sup>Not available for e-tron.

<sup>7</sup>Available with slightly different design. <sup>8</sup>Also available in black matt, gloss turned finish<sup>1</sup>. <sup>9</sup>Only available in gloss turned finish<sup>1</sup>. <sup>10</sup>Also available in gloss black, gloss turned finish<sup>1</sup>. <sup>11</sup>Design uses forging technology. <sup>12</sup>Also available in gloss black. <sup>13</sup>Only available in gloss black, gloss turned finish<sup>1</sup>.



## Classification of tyre parameters

The table below shows the ranges of the fuel efficiency class, of the wet grip class and the exterior noise emission class for the various sizes of the tyres featured in this catalogue.

	Tyre size	Fuel efficiency class	Wet grip class	Exterior noise emission class
Summer tyres				
Audi A1/S1	215/40 R 17	F-C	C-A	72-70
Audi A1/S1 Sportback	225/35 R 18	F-E	C-A	73-68
Audi A3/S3	225/45 R 17	E-C	C-A	71-67
Audi A3/S3 Sportback	225/40 R 18	F-E	B-A	72-67
Audi A3/S3 Saloon	235/35 R 19	E	B	72
Audi A3/S3 Cabriolet				
Audi A4/S4 Saloon	245/40 R 18	F-C	B-A	72-68
Audi A4/S4 Avant	245/35 R 19	E	B-A	72-67
Audi A4 allroad quattro	245/45 R 18	F-C	B-A	71-68
	245/40 R 19	E	B-A	72-68
Audi A5/S5 Coupé	255/35 R 19	F-E	C-A	73-66
Audi A5/S5 Cabriolet				
Audi A5/S5 Sportback				
Audi A6/S6 Saloon	245/45 R 18	E-C	D-A	72-68
Audi A6/S6 Avant	255/40 R 19	E-C	C-A	73-69
	255/35 R 20	E	C-B	73-72
	265/30 R 21	E	B-A	72-71
Audi A6 allroad quattro	255/45 R 19	E	B	72
	255/40 R 20	E-C	B	73-70
Audi A7/S7 Sportback	255/40 R 19	E-C	C-A	73-69
	265/35 R 20	E	C-A	73-69
	275/30 R 21	E	B	73-70
Audi A8/A8 L/A8 L W12/S8	255/45 R 19	E	C-B	73-68
	265/40 R 20	E-C	B	74-71
	275/35 R 21	F-E	B	73-71
Audi TT/TTS Coupé	245/40 R 18	E	B-A	71-70
Audi TT/TTS Roadster	245/35 R 19	E	B-A	72-70
	255/30 R 20	E	A	73
Audi Q2	215/50 R 18	B	A	71
	235/40 R 19	C	B	71
Audi Q3	235/50 R 18	C	B-A	71
	255/40 R 19	E-C	B	73-71
	255/35 R 20	E	B	73-70
Audi Q5/SQ5	255/45 R 20	F-C	C-A	72-69
	255/40 R 21	E	B	73-69
Audi Q7/SQ7	255/55 R 19	C-B	B-A	73-71
	285/45 R 20	C	C-B	73-71
	285/40 R 21	C	A	74
	285/35 R 22	C	C	73
Audi R8 Coupé	245/30 R 20	E	A	71
	305/30 R 20	E	A	72
Winter tyres				
Audi A1/S1	215/40 R 17	F	E	67
Audi A1/S1 Sportback				
Audi A3/S3	225/40 R 18	F-E	E-B	72-69
Audi A3/S3 Sportback				
Audi A3/S3 Saloon				
Audi A3/S3 Cabriolet				
Audi A4/S4 Saloon	245/40 R 18	F-E	E-B	72-68
Audi A4/S4 Avant				
Audi A4 allroad quattro	245/45 R 18	E	C	70
Audi A5/S5 Coupé	255/35 R 19	E	C	73
Audi A5/S5 Cabriolet				
Audi A5/S5 Sportback				

## Audi Vorsprung durch Technik

	Tyre size	Fuel efficiency class	Wet grip class	Exterior noise emission class
Winter tyres				
Audi A6/S6 Saloon	255/35 R 20	E	E-C	73-70
Audi A6/S6 Avant				
Audi A6 allroad quattro	255/40 R 20	C	B	73
Audi A7/S7 Sportback	265/35 R 20	E	C	70
Audi A8/A8 L/A8 L W12/S8	265/40 R 20	E	C	70
	275/35 R 21	C	B	73
Audi Q3	255/40 R 19	E-C	C-B	73-69
Audi Q5	255/45 R 20	E-C	C-B	72-71
Audi Q7/SQ7	255/55 R 19	C	C	73-72
	285/45 R 20	E	C	70
Audi TT/TTS	245/40 R 18	F	E	68
Audi TT/TTS Roadster				
Audi R8 Coupé	245/30 R 20	E	C	72
All-season tyres				
Audi A3/S3	225/45 R 17	E-C	E-B	71
Audi A3/S3 Sportback				
Audi A3/S3 Saloon				
Audi A3/S3 Cabriolet				

It is not possible to order a specific tyre.

Ask your Audi partner about the range of tyres available in your country.

Model	Fuel consumption <sup>1</sup> in l/100 km			CO <sub>2</sub> emissions <sup>1</sup> in g/km
	urban	extra-urban	combined	combined
<b>Audi A4 Avant</b>	7.9-4.6	5.5-3.5	6.4-3.9	147-102
<b>Audi A6</b>	10.1-4.7	6.5-3.8	7.8-4.2	182-109
<b>Audi S7</b>	13.4-13.2	7.2-7.0	9.5-9.3	220-215
<b>Audi A8 L</b>	12.8-7.4	7.3-4.9	9.3-5.8	215-153
<b>Audi A8 L W12</b>	15.6-15.3	8.6-8.4	11.2-11.0	259-254
<b>Audi Q7</b>	10.0-6.1	7.3-5.1	8.3-5.5	193-144
<b>Audi TTS Roadster</b>	9.5-8.4	6.3-6.0	7.5-6.9	173-159
<b>Audi R8 Coupé V10 plus</b>	17.5	9.3	12.3	287

<sup>1</sup>Fuel consumption and CO<sub>2</sub> emission figures given in ranges depend on the tyre/wheel sets used. The figures given were calculated using the specified measuring procedures. The figures do not refer to one individual vehicle and do not form part of any offer, but rather should be used purely for purposes of comparison between the different vehicle models. A vehicle's fuel consumption and CO<sub>2</sub> emissions do not just depend on how efficiently the vehicle uses the fuel, but are also influenced by driving behaviour and other non-technical factors. CO<sub>2</sub> is the greenhouse gas primarily responsible for global warming.

The models and equipment versions illustrated and described in this brochure and some of the services listed are not available in all countries. The cars illustrated are equipped with optional features for which an extra charge is made. Details concerning the delivery specifications, appearance, performance, dimensions and weights, fuel consumption and running costs of the vehicle were correct to the best of our knowledge at the time of going to press. Deviations from the colours and shapes shown in the illustrations may occur. No liability is accepted for errors and printing errors. The right to introduce modifications is reserved. Not to be reproduced, including in part, without the written approval of AUDI AG.

**quattro GmbH**  
NSU-Str. 24-32  
74172 Neckarsulm  
www.audi.com  
Valid from September 2016

Printed in Germany  
658/1102.10.18

This catalogue is made from chlorine-free, bleached paper.

