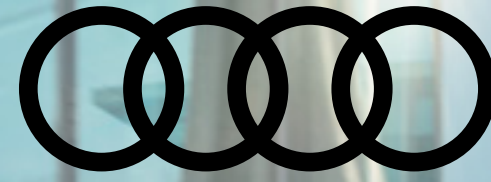


2019



A7



A7
2019

Audi of America
Audiusa.com
Facebook.com/Audi

Note: A word about this brochure. Audi of America, Inc., believes the specifications in this brochure to be correct at the time of printing. However, specifications, standard equipment, options, fabrics and colors are subject to change without notice. Some equipment may be unavailable when your vehicle is built. Please ask your dealer for advice concerning current availability of standard and optional equipment, and your dealer will verify that your vehicle will include the equipment you ordered. Vehicles in this brochure are shown with optional equipment. See your dealer for complete details on the Audi New Vehicle Limited Warranty, twelve-year limited warranty against corrosion perforation, and Audi 24/7 Roadside Assistance. (Roadside assistance coverage provided by Road America in the U.S. Certain conditions apply; see your dealer for details.) Tires supplied by various manufacturers. "Audi," all model names, "Audi connect," "Audi pre sense," "Audi Sport," "MMI," "quattro," "S line," "S tronic," "TFSI" and the four rings logo are registered trademarks of AUDI AG. "Amazon" and "Amazon Music" are registered trademarks of Amazon Technologies, Inc. "Android," "Android Auto" and "Google" are trademarks of Google Inc. © 2018 Google Inc. All rights reserved. "Apple CarPlay" is a registered trademark of Apple Inc. "Bang & Olufsen," "BeoCore" and "ICEpower" are registered trademarks of Bang & Olufsen. The BLUETOOTH word mark and logos are owned by the Bluetooth SIG, Inc., and any use of such marks by AUDI AG is under license. "Chrome Industries" is a registered trademark of Chrome Industries, Inc. "HD Radio" and the HD Radio logo are proprietary trademarks of iBiquity Digital Corporation. "SiriusXM" and all related marks and logos are registered trademarks of Sirius XM Radio Inc. and its subsidiaries. "Wi-Fi" is a registered trademark of the Wi-Fi Alliance. "Yelp" is a registered trademark of Yelp, Inc. All other trademarks are the property of their respective owners. Some European models shown. Some features may not be available at time of order.

A7



**You won't fall
in love just on
looks alone.**



AWARENESS



ALLURE

The mysteries of attraction.



MAGNETISM




ATTACHMENT



All-new Audi A7

The original, evolved. The iconic, refined. Even a vehicle that defied definition is destined to explore new boundaries and find new frontiers for expression. With the all-new Audi A7, design sophistication remains essential, from daring exterior surfacing to an interior of architectural significance. Intelligence drives its performance. Luxury finds your comfort zone. The clues to its power of attraction are easy to see, making it no mystery at all.



The sharp definition of the upper fender line pays homage to the original Ur-Quattro sports coupe.

The shoulder line extends towards the rear and is positioned low to give the Audi A7 a sportier presence than the previous Audi A7.

The gradual slope that defines Sportback.

The defined edge of the boat line tapers in as it moves towards the rear.

A brief outline on the nature of desire.

Graceful arcs sweep your eyes off their feet. The lines lead you on but don't let you down. The new Audi A7 stays true to its roots as the five-door Sportback. The form is familiar, and the detailing is more complex—lower and wider for a more aggressive stance. Balanced from top to bottom and front to rear. Where the smooth and the creased, the angled and the ovoid work in unison to have you falling head over wheels.



2019 Audi A7 Prestige shown in Triton Blue metallic with available equipment.



Take a second glance at love at first sight.

Whether you're left speechless or you feel your heart beating faster, the effects of a powerful first impression can make you think it's more than infatuation. Audi sees lighting from both functional and creative perspectives, where tech innovation can serve more than one purpose. With the Audi A7, 24 vertical beams of the available HD Matrix-design headlights with high-beam assistant¹ are arranged to pique your interest. They serve as daytime running lights and dynamic indicators, accenting the new direction of the A7. And by getting your attention, they've proven their effectiveness.



Blessed with the magnetism to hold your attention.

Designed to stop others in their tracks. The undulating flow of the 26 vertical light bars draws you in, and the red sliver of the LED light bar helps accentuate the width of the Audi A7. Available LED taillights with animation greet or bid you farewell with a choreographed dance of light.

Dynamic indicators

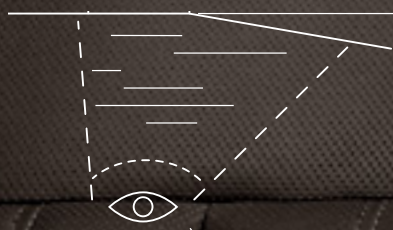
When the driver signals their intent to change lanes, the dynamic indicators illuminate from the inside out to help create awareness for drivers following the Audi A7.

2019 Audi A7 Prestige shown in Triton Blue metallic with available equipment.

¹ Driver Assistance features are not substitutes for attentive driving. Please see your Owner's Manual for further details and important limitations.

A design revolution gone askew.

Convention has been overthrown. The digital displays of the MMI® touch response and the available Audi virtual cockpit systems usher in a new era of user interface.¹ Fewer buttons and knobs give the interior a minimalist aesthetic, highlighted by a gleaming, high-gloss black surface. Infotainment and climate control panels are angled in favor of the driver. Instead of upheaval, this change of systems brings an elegant sense of order.



The designers angled the center screens to create a driver-focused layout.



The spell is woven with crafted wood and the soft touch of leather.

Modernist architectural shapes with the detailing of designer furniture. The ambiance sets the tone. The feel of the materials convinces you that luxury has progressed. When equipped with the available Individual Contour Seating package, driver and front-seat passengers can receive a relaxing massage in heated and ventilated 18-way power-adjusted seats with Valcona leather. The leather treatment extends to cover the dashboard, door armrests and center console, and Achat Gray Fine Grain Birch Natural Wood inlays add a layer of warmth. Comfort now looks and feels like it has reached new heights of sophistication.





Win the talent contest just by showing up.

The judges don't look for just one area of strength. Winners tend to possess a broad skillset. The Audi drive select system allows the driver to choose from Auto, Comfort and Dynamic modes to change steering, transmission and throttle response or to create a custom profile with the Individual feature. Multi-talented. Adaptable. Driver-focused. The Audi A7 is engineered to score high across the board.

A7 335 hp/369 lb-ft

The 3.0-liter TFSI® V6 engine was engineered to deliver powerful response in a smooth, refined manner. A twin-scroll turbocharger and Audi valvelift system help provide up to 369 lb-ft of torque from 1,370–4,500 rpm. With this broad powerband, the Audi A7 can accelerate from 0–60 mph in 5.2 seconds and make progress feel effortless.

quattro® all-wheel drive

The Audi A7 features the latest advancements in quattro®. It can proactively distribute torque between the front and rear axles according to road conditions and driving style. The system also includes torque vectoring to help improve cornering performance by applying braking pulses to the inside wheels during a turn and sending torque to the outside wheels.

Adaptive damping suspension and Dynamic all-wheel steering system

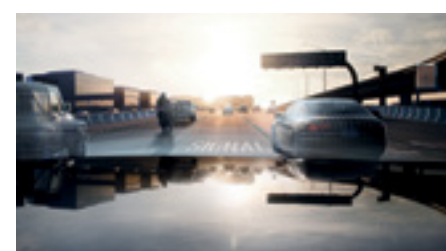
New levels of handling control and ride comfort are achieved with the available Adaptive damping suspension. The system adjusts shock absorber pressure to help provide a smooth ride and enhance dynamic response in the turns. And, when certain conditions are met, a rear-mounted steering system can turn the rear wheels to help improve maneuverability and stability.

There's a beauty to intelligence that looks can't achieve.

Knowledge may be power, but its application is most important. By linking an array of sensors and cameras to a central driver assistance controller capable of up to 741 billion computations per second, the driver assistance features in the Audi A7 reached a new level of sophistication. These systems were engineered to help alert you to an impending event, acting like an extra pair of eyes, or assisting during traffic congestion. By gathering data and turning it into greater awareness, you may like the A7 more for its brains than its looks.¹

A picture forms

Data gathered from front- and rear-mounted cameras, sonar and radar sensors, an infrared camera and a LIDAR laser scanner are sent to the central driver's assistance controller. Then that controller combines the data to form a picture of the vehicle's surroundings. This is an actual image created by Audi driver assistance systems.



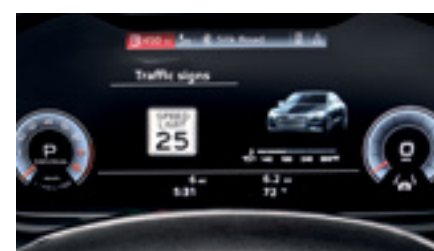
Audi adaptive cruise assist

Comprising both Audi adaptive cruise control and Audi active lane assist, available Audi adaptive cruise assist helps the driver accelerate, brake and maintain speed and distance as well as stay in the lane in traffic or at highway speeds.¹



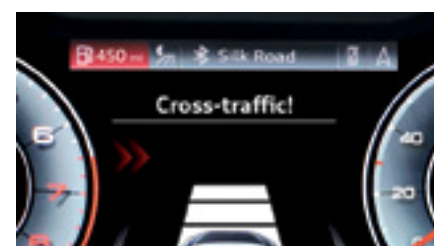
Top view camera system with Virtual 360 view

Using four cameras placed throughout the Audi A7, the available Top view camera system with Virtual 360 view displays the vehicle and its surroundings on the top MMI® touch response screen.² The driver can select an area of the car and zoom in to see objects or obstructions surrounding the vehicle.¹



Traffic sign recognition

Traffic signs indicating speed limits, no passing zones and school zones are displayed on the available Audi virtual cockpit or available head-up display to help raise awareness. The system displays the current speed limit, and the driver can program a warning threshold when speed limits are exceeded.¹



Intersection assist

The front-side mounted radars monitor the surroundings while the vehicle is at an intersection. The available system sends visual and audible warnings to alert the driver and passengers of an approaching vehicle detected, and it can apply a warning brake jolt if the driver doesn't respond while pulling slowly through an intersection.¹

¹ Driver Assistance features are not substitutes for attentive driving. Please see your Owner's Manual for further details and important limitations.

² Always pay careful attention to the road, and do not drive while distracted. See Owner's Manual for further details and important limitations.

The human-machine bond just got stronger.

With the myAudi app and Audi connect® working together,¹³ you can experience an expanded level of integration and a suite of convenience features. In addition to your music, contacts and emails, myAudi can transfer points of interests into navigated route guidance, be used to lock or unlock your doors or help you find your car in a crowded parking lot with your compatible device. So even when you are away from your vehicle, it can feel nearby.¹⁵

myAudi Navigation

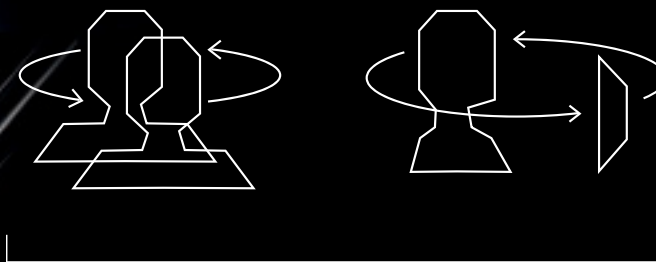
myAudi Navigation is engineered to integrate with the MMI® Navigation system and to store your favorite and recent routes. Route guidance considers current and predicted traffic conditions, and it can offer alternative routes when traffic congestion is detected.^{5,13,14}

Amazon Music

Get unlimited access to millions of songs. Visit amazon.com/myaudi to sign up and stream through your MMI® display. Simply link the myAudi app to your Amazon account and start listening.^{13,14}

Yelp® Review Highlights

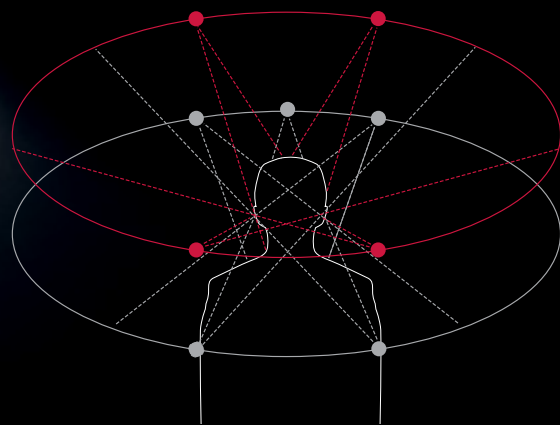
Find out what the buzz is about. Yelp® Review Highlights gathers frequently used descriptions and phrases from customer reviews to help give you a quick picture of the business and its services.^{7,13,14}



Just like we respond to people with visual and audible affirmation, MMI® touch response reacts with haptic and audible confirmation to your input.⁴

Sounds like what you want to hear.

You may want true-to-life sound. You may want wide-ranging depth and the feeling of being encircled by music from three dimensions. Then you may want to listen to what Bang & Olufsen® has to offer. The available Bang & Olufsen® 3D Premium Sound System features 16 speakers, a 15-channel amplifier and 705 watts of power, and the available Bang & Olufsen® 3D Advanced Sound System is equipped with 19 speakers, a 19-channel BeoCore® amplifier and ICEpower® amplifiers for a total of 1,820 watts of power. The speakers are placed strategically throughout the interior to help create the feeling of a live performance. Both Bang & Olufsen® systems were engineered to help music scale new heights.



Full 3D surround experience

By placing speakers above the listener, Bang & Olufsen® brought a sense of height to sound reproduction. A post-processor transforms the audio signals to give them a more spatial, third-dimensional quality.

The shortest distance between sport and style is an S line.[®]



You don't have to look far for an Audi A7 engineered for drivers who think laterally and appreciate track-inspired styling. The available S line[®] package features a sport-tuned suspension that lowers the vehicle's center of gravity to help improve handling. A more aggressive front fascia incorporates design elements similar to Audi Sport[®] models. Illuminated door sills with S line insignia and S line fender badges let others know that thrills are just around the corners.

2019 Audi A7 Prestige shown in Tango Red metallic with available S line[®] package and available equipment.





A



B



C



D



E



F



G

- A. Panoramic sunroof** | The large aperture allows natural light and fresh air to stream into the crafted interior.
- B. Available Audi virtual cockpit** | Choose from two different viewing modes through the 12.3-inch high-resolution screen.
- C. Available heated steering wheel** | Add a warm touch on cold mornings with the available heated steering wheel feature in the Cold Weather package.
- D. Available Valcona leather** | Treated to be soft to the touch, our most luxurious leather is available in several colors.
- E. Rear cargo area/Power tailgate** | Sportback design opens up cargo versatility.
- F. Available heated rear seats** | Rear-seat passengers can warm up with adjustable heated surfaces.
- G. Available Ambient LED interior lighting plus package (multicolor ambient light)** | Change the mood by selecting from a palette of colors.



See how the Audi A7 has raised the standards of styling and performance.

Visit:

AudiUSA.com

These additives and preservatives have proven benefits.

Make your preferences a reflection of your sense of style. Audi Genuine Accessories are engineered to fit your Audi A7 with the same commitment to quality and functionality you expect from Audi. Choose from protective floor mats or a car cover, or add your own touch with a bold wheel selection. Audi Genuine Accessories make it easy to put your signature on your new Audi A7.

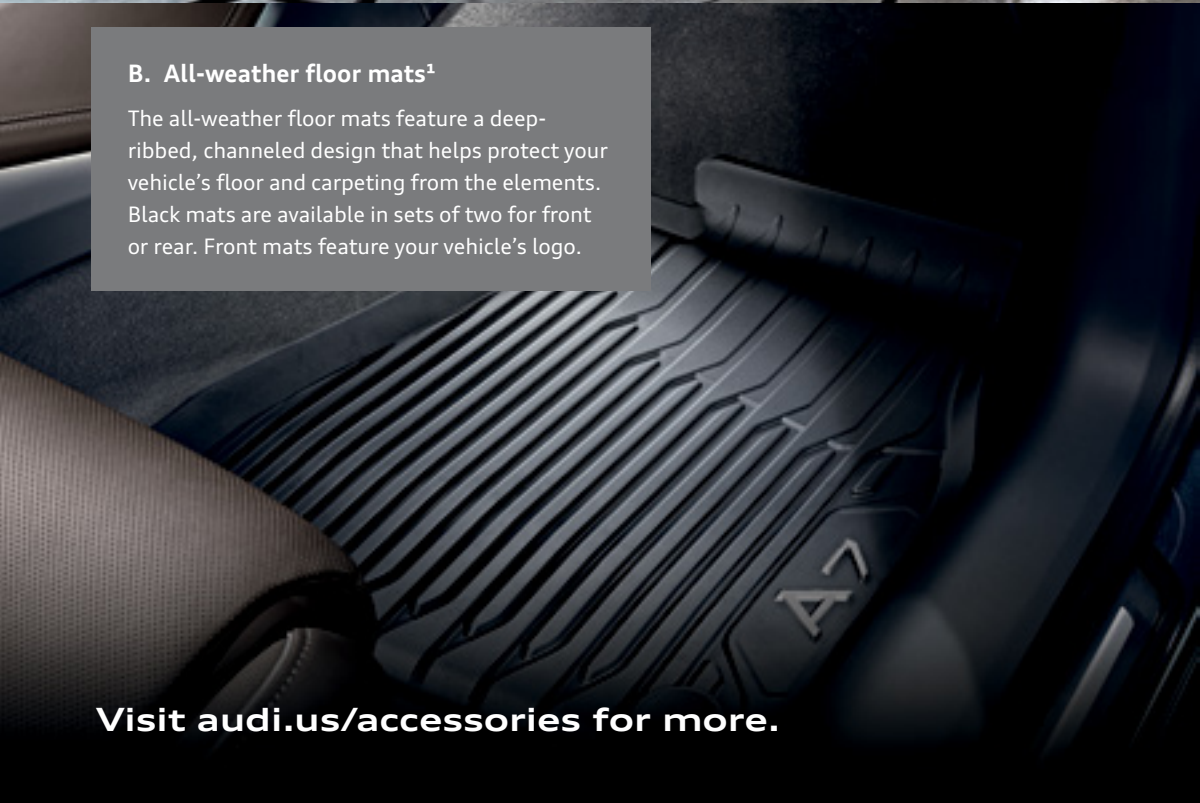
A. A7 car cover

A lightweight, easy-to-use cover helps protect your vehicle's finish. Intended for indoor use only. Storage bag included.



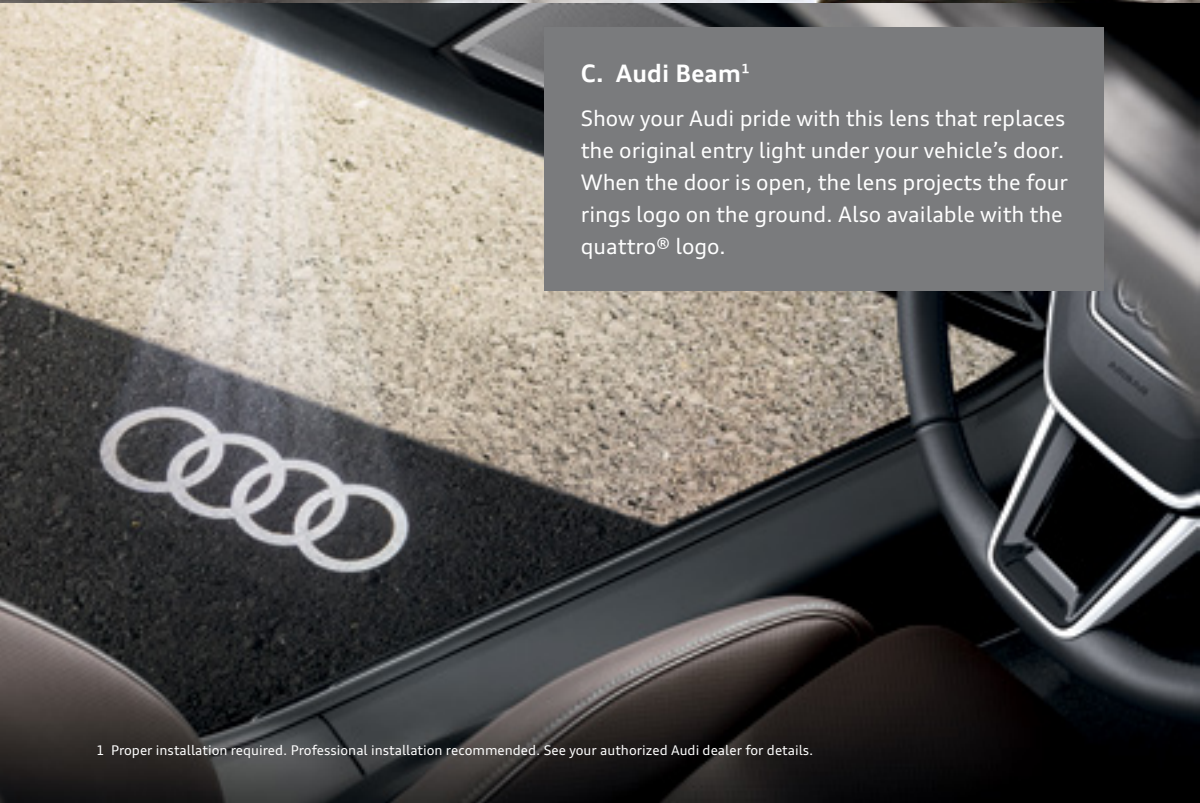
B. All-weather floor mats¹

The all-weather floor mats feature a deep-ribbed, channeled design that helps protect your vehicle's floor and carpeting from the elements. Black mats are available in sets of two for front or rear. Front mats feature your vehicle's logo.



C. Audi Beam¹

Show your Audi pride with this lens that replaces the original entry light under your vehicle's door. When the door is open, the lens projects the four rings logo on the ground. Also available with the quattro® logo.



Visit audi.us/accessories for more.

1 Proper installation required. Professional installation recommended. See your authorized Audi dealer for details.

The Four Rings
don't perform just
on the road.



A



C. Audi active wear

For you, the fun begins when you break a sweat. The Audi collection of active wear is designed to keep you warm when it's chilly, dry when it rains or help shade your eyes on sunny days. Available in several styles and colors, these active life items are made to put in the extra miles.

D. Ladies' sweaters and pullovers

The Audi collection features a wide range of womens' sweaters and pullovers to suit many occasions. Whether you want to be comfortable while working from home or on the road for business, Audi style tends to travel well.

E. Chrome Industries® Macheto backpack

Versatile design allows this pack to change for the occasion. It converts quickly from a backpack to a briefcase and features a pocket to hold your laptop computer.



D



B

A. Ladies' Saturday sweatshirt

The soft fleece texture is made from an 80% cotton and 20% polyester blend that can help keep you warm throughout the day. The Saturday sweatshirt features ribbed cuffs, hand-warming pockets and covered center zipper.

B. Men's apparel

Because you're discerning, the Audi collection offers a wide array of menswear that fits many occasions. Whether you're serious about your work or dedicated to fun, the four rings will ride along with you.



E

Visit audi.us/collection for more.



2019 Audi A7 Premium shown in Triton Blue metallic.

Highlighted Features

- > 19" 10-Y-spoke design wheels with 245/45 all-season tires¹
- > 48v MHEV mild hybrid technology
- > LED headlights with LED daytime running lights
- > LED taillights with dynamic indicators
- > Panoramic sunroof
- > Power-adjustable, auto-dimming and heated exterior side mirrors with memory
- > LED indicators, front and rear
- > Three-spoke multifunction steering wheel with shift paddles
- > Power tilt and telescopic adjustable steering column with memory
- > Heated eight-way power front seats, four-way lumbar adjustment and seat memory for driver
- > Split-folding 40/20/40 rear seatbacks
- > Three-zone automatic climate control
- > Gray/Brown Fine Grain Ash Natural Wood inlays
- > Leather seating surfaces
- > Contrast stitching on seats and dashboard
- > Frameless auto-dimming rear view mirror with digital compass
- > Ambient LED interior lighting package
- > Audi pre sense[®] basic and front²
- > Parking system plus with front and rear acoustic sensors²
- > Rear view camera
- > Audi advanced key—keyless start, stop and entry with hands-free tailgate release³
- > Power tailgate
- > Adaptive rear spoiler
- > 7" color driver information system
- > MMI[®] touch response with dual center displays (8.8-inch upper and 8.6-inch lower) with haptic feedback⁴
- > MMI[®] Navigation with natural voice control system⁵
- > Audi sound system with 10 speakers, 6-channel amplifier and 180 watts
- > Limited-time subscription to Audi connect[®] CARE assistance and security services⁶
- > Six-month trial subscription to Audi connect[®] PRIME and Audi connect[®] PLUS online services^{7,8}
- > HD Radio[™] technology
- > SiriusXM[®] with 90-day trial subscription¹⁶
- > Audi smartphone interface including Apple CarPlay[®] and Google[™] Android Auto[™] for compatible devices⁹
- > Audi music interface with front USB ports for data/charging and two USB ports for charging
- > BLUETOOTH[®] wireless technology preparation for compatible devices
- > Rain/light sensor for automatic windshield wipers and headlights
- > Cruise control with coast, resume and accelerate features

Available Packages

Cold Weather package

- > Heated steering wheel
- > Heated rear seats

20" Wheel package

- > 20" 5-double-V-spoke design wheels
- > 255/40 all-season tires¹

Convenience package

- > Audi side assist and Audi pre sense[®] rear²
 - with Rear cross traffic assist²
 - with Vehicle exit warning²
- > Audi phone box¹⁰ (signal booster and wireless charger)
- > Power-adjustable, auto-dimming, power-folding, heated exterior side mirrors with memory

Stand-alone Options

- > Rear thorax side airbags¹¹
- > Black cloth headliner
- > Dark Brown Walnut Natural Natural Wood inlays
- > Single CD/DVD player



2019 Audi A7 Premium Plus shown in Firmament Blue metallic.

Highlighted Features

- > 19" 10-Y-spoke design wheels with 245/45 all-season tires¹
- > 48v MHEV mild hybrid technology
- > HD Matrix-design headlights with high-beam assistant²
- > LED taillights with animation
- > Panoramic sunroof
- > Headlight washer system
- > Power-adjustable, auto-dimming, power-folding, heated exterior side mirrors with memory
- > LED indicators, front and rear
- > Three-spoke multifunction steering wheel with shift paddles
- > Power tilt and telescopic adjustable steering column with memory
- > Heated eight-way power front seats, four-way lumbar adjustment and seat memory for driver
- > Split-folding 40/20/40 rear seatbacks
- > Three-zone automatic climate control
- > Gray/Brown Fine Grain Ash Natural Wood inlays
- > Leather seating surfaces
- > Contrast stitching on seats, dashboard, armrests and knee bolster
- > Frameless auto-dimming rear view mirror with digital compass
- > Ambient LED interior lighting package
- > Audi pre sense[®] basic and front²
- > Audi side assist and Audi pre sense[®] rear²
 - with Rear cross traffic assist²
 - with Vehicle exit warning²
- > Top view camera system with Virtual 360 view
- > Parking system plus with front and rear acoustic sensors²
- > Audi advanced key—keyless start, stop and entry with hands-free tailgate release³
- > Power tailgate
- > Adaptive rear spoiler
- > Audi virtual cockpit (12.3" LCD digital instrument cluster with two visual modes: Classic and Infotainment)
- > MMI[®] touch response with dual center displays (10.1-inch upper and 8.6-inch lower) with haptic feedback⁴
- > MMI[®] Navigation plus with natural voice control system⁵
- > Bang & Olufsen[®] 3D Premium Sound System with 16 speakers, 15-channel amplifier and 705 watts
- > Limited-time subscription to Audi connect[®] CARE assistance and security services⁶
- > Six-month trial subscription to Audi connect[®] PRIME and Audi connect[®] PLUS online services^{7,8}
- > HD Radio[™] technology
- > SiriusXM[®] with 90-day trial subscription¹⁶
- > Audi smartphone interface including Apple CarPlay[®] and Google[™] Android Auto[™] for compatible devices⁹
- > Audi music interface with front USB ports for data/charging and two USB ports for charging
- > BLUETOOTH[®] wireless technology preparation for compatible devices
- > Audi phone box¹⁰ (signal booster and wireless charger)
- > Rain/light sensor for automatic windshield wipers and headlights
- > Cruise control with coast, resume and accelerate features

Available Packages

<p>Cold Weather package</p> <ul style="list-style-type: none"> > Heated steering wheel > Heated rear seats <p>20" Wheel package</p> <ul style="list-style-type: none"> > 20" 5-double-V-spoke design wheels > 255/40 all-season tires¹ 	<p>S line[®] package</p> <ul style="list-style-type: none"> > S line[®] exterior appearance > S line[®] fender badges > Illuminated S line[®] door sills > Sport suspension (20mm drop) <p>Warm Weather package</p> <ul style="list-style-type: none"> > Four-zone automatic climate control > Power rear window sunshade > Ventilated front seats > Four-way power lumbar adjustment for front passenger seat 	<p>Individual Contour Seating package</p> <ul style="list-style-type: none"> > Valcona leather seats > Heated and ventilated 18-way power comfort front seats including lumbar adjustment, passenger seat memory and massage functions > Leather package (dashboard, armrests and center console) > Achat Gray Fine Grain Birch Natural Wood inlays 	<p>Driver Assistance package</p> <ul style="list-style-type: none"> > Audi adaptive cruise assist² <ul style="list-style-type: none"> - with Traffic jam assist² - with Turn assist² > Traffic sign recognition² > Audi active lane assist with Emergency assist² > Intersection assist²
---	--	--	--

Stand-alone Options

<ul style="list-style-type: none"> > Rear thorax side airbags¹¹ 	<ul style="list-style-type: none"> > Black cloth headliner 	<ul style="list-style-type: none"> > Dark Brown Walnut Natural Wood inlays 	<ul style="list-style-type: none"> > Single CD/DVD player
--	--	--	---

1-11, 16 See A7 Prestige Featured Highlights, Packages and Options page for important information regarding: high-performance tires, Audi pre sense[®] basic and front, Audi side assist, Audi pre sense[®] rear with Rear cross traffic assist and with Vehicle exit warning, Top view camera system with Virtual 360 view, parking system plus with front and rear acoustic sensors, Audi adaptive cruise assist with Traffic jam assist and with Turn assist, Traffic sign recognition, Audi active lane assist with Emergency assist, Intersection assistant, Audi advanced key, MMI[®] touch, MMI[®] Navigation plus, Audi connect[®] CARE, Audi connect[®] PRIME, Audi connect[®] PLUS, Audi smartphone interface, Audi phone box, airbags and SiriusXM[®].

A7 Prestige Featured Highlights | Packages and Options



2019 Audi A7 Prestige shown in Florett Silver metallic with available equipment.

Highlighted Features

- > 19" 10-Y-spoke design wheels with 245/45 all-season tires¹
- > 48v MHEV mild hybrid technology
- > HD Matrix-design headlights with Audi laser light and high-beam assistant²
- > LED taillights with animation
- > Panoramic sunroof
- > Headlight washer system
- > Power-adjustable, auto-dimming, power-folding, heated exterior side mirrors with memory
- > LED indicators, front and rear
- > Three-spoke multifunction steering wheel with shift paddles
- > Power tilt and telescopic adjustable steering column with memory
- > Heated and ventilated 12-way power comfort front seats including lumbar adjustment and memory for driver
- > Split-folding 40/20/40 rear seatbacks
- > Four-zone automatic climate control
- > Gray/Brown Fine Grain Ash Natural Wood inlays
- > Leather seating surfaces
- > Contrast stitching on seats, dashboard, armrests and knee bolster
- > Power rear window sunshade
- > Frameless auto-dimming rear view mirror with digital compass
- > Ambient LED interior lighting plus package (multicolor ambient light)
- > Dual pane acoustic glass
- > Audi pre sense[®] basic and front²
- > Audi side assist and Audi pre sense[®] rear²
 - with Rear cross traffic assist²
 - with Vehicle exit warning²
- > Top view camera system with Virtual 360 view
- > Head-up display with navigation and assistance systems information²
- > Parking system plus with front and rear acoustic sensors²

- > Audi advanced key—keyless start, stop and entry with hands-free tailgate release³
- > Power soft-closing doors
- > Power tailgate
- > Adaptive rear spoiler
- > Audi virtual cockpit (12.3" LCD digital instrument cluster with two visual modes: Classic and Infotainment)
- > MMI[®] touch response with dual center displays (10.1-inch upper and 8.6-inch lower) with haptic feedback⁴
- > MMI[®] Navigation plus with natural voice control system⁵
- > Bang & Olufsen[®] 3D Premium Sound System with 16 speakers, 15-channel amplifier and 705 watts
- > Limited-time subscription to Audi connect[®] CARE assistance and security services⁶
- > Six-month trial subscription to Audi connect[®] PRIME and Audi connect[®] PLUS online services^{7,8}
- > HD Radio[™] technology
- > SiriusXM[®] with 90-day trial subscription¹⁶
- > Audi smartphone interface including Apple CarPlay[®] and Google[™] Android Auto[™] for compatible devices⁹
- > Audi music interface with front USB ports for data/charging and two USB ports for charging
- > BLUETOOTH[®] wireless technology preparation for compatible devices
- > Audi phone box¹⁰ (signal booster and wireless charger)
- > Rain/light sensor for automatic windshield wipers and headlights
- > Cruise control with coast, resume and accelerate features

Available Packages

Cold Weather package

- > Heated steering wheel
- > Heated rear seats

20" Wheel package

- > 20" 5-double-V-spoke design wheels
- > 255/40 all-season tires¹

S line[®] package

- > S line[®] exterior appearance
- > S line[®] fender badges
- > Illuminated S line[®] door sills
- > Sport suspension (20mm drop)

21" Wheel package

- > 21" 5-V-spoke-star design wheels, Gray/polished finish
- > 255/35 summer performance tires¹²

Individual Contour Seating package

- > Valcona leather seats
- > Heated and ventilated 18-way power comfort front seats including lumbar adjustment, passenger seat memory and massage functions
- > Leather package (dashboard, armrests and center console)
- > Achat Gray Fine Grain Birch Natural Wood inlays

Driver Assistance package

- > Audi adaptive cruise assist²
 - with Traffic jam assist²
 - with Turn assist²
- > Traffic sign recognition²
- > Audi active lane assist with Emergency assist²
- > Intersection assist²

Adaptive Chassis package

- > Dynamic all-wheel steering
- > Adaptive damping suspension

Stand-alone Options

- > Rear thorax side airbags¹¹
- > Black cloth headliner

- > Dark Brown Walnut Natural Wood inlays
- > Single CD/DVD player

- > Night vision assistant with pedestrian and large animal detection²

- > Bang & Olufsen[®] 3D Advanced Sound System (deletes spare tire; includes tire mobility kit)

1 These tires may ride less comfortably, make more noise and wear more quickly than other choices. To avoid tire, rim or vehicle damage, it is important that inflation pressure is regularly checked and maintained at optimum levels. Tires are supplied and warranted by their manufacturer. Driver Assistance features are not substitutes for attentive driving. Please see your Owner's Manual for further details and important limitations. 2 Driver Assistance features are not substitutes for attentive driving. Please see your Owner's Manual for further details and important limitations. 3 See Owner's Manual for further details and important warnings about the keyless ignition feature. Do not leave vehicle unattended with the engine running, particularly in enclosed spaces. 4 Always pay careful attention to the road, and do not drive while distracted. See Owner's Manual for further details and important limitations. 5 Audi Navigation plus depends on signals from the worldwide Global Positioning Satellite network. The vehicle's electrical system, and existing wireless and satellite technologies, must be available and operating properly for the system to function. The system is designed to provide you with suggested routes in locating addresses, destinations and other points of interest. Changes in street names, construction zones, traffic flow, points of interest and other road system changes are beyond the control of Audi of America, Inc. Complete detailed mapping of lanes, roads, streets, toll roads, highways, etc., is not possible, therefore you may encounter discrepancies between the mapping and your actual location. Please rely on your individual judgment in determining whether or not to follow a suggested Audi Navigation plus route. 6 Always pay careful attention to the road, and do not drive while distracted. Connect CARE services are provided with the support of authorized affiliated and third-party service providers. Available on select models. Connect CARE services are activated prior to purchase or lease and do not require registration or paid subscription. Connect CARE services require vehicle cellular connectivity and availability of vehicle GPS signal; certain services collect location information. See Terms of Service for information about how to disable. Connect CARE services are subject to technologies remaining commercially available, and such service is not guaranteed and may not be available after December 2021. See Terms of Service, Privacy Policy and other details at www.audiusa.com/privacy and www.audiusa.com/technology/intelligence/audi-connect/connect-terms. Connect CARE services should be used only when it is safe and appropriate. 7 Always pay careful attention to the road, and do not drive while distracted. Connect PRIME services are optional, may require an additional subscription with separate terms and conditions, and should be used only when it is safe and appropriate. Trial or paid subscription required. Connect PRIME services require vehicle cellular connectivity and availability of vehicle GPS signal; certain services collect location information. See Terms of Service for information about how to disable. Online services are subject to change at any time. See Terms of Service, Privacy Policy and other details at www.audiusa.com/privacy and www.audiusa.com/technology/intelligence/audi-connect/connect-terms. 8 Always pay careful attention to the road, and do not drive while distracted. The Wi-Fi[®] hotspot feature is intended for passenger use only. 4G LTE coverage is not available in all areas. Wi-Fi[®] feature is provided through Connect PLUS. Connect PLUS features and technologies are optional,

may require an additional subscription with separate terms and conditions, and should be used only when it is safe and appropriate. See materials provided by wireless carrier for terms, privacy, data security details. Returning devices connect automatically and use plan data unless hotspot is removed from device settings. 9 Always pay careful attention to the road, and do not drive while distracted. Not all features available on all operating systems. Standard text and data usage rates apply. These features require compatible device, operating system and mobile apps. See mobile device and app providers for terms and privacy. "Android," "Android Auto," "Google Play" and other marks are trademarks of Google Inc. "Apple CarPlay" is a registered trademark of Apple Inc. 10 Requires compatible smart device. This is a CONSUMER device. BEFORE USE, you MUST REGISTER THIS DEVICE with your wireless provider and have your provider's consent. Most wireless providers consent to the use of signal boosters. Some providers may not consent to the use of this device on their network. If you are unsure, contact your provider. You MUST operate this device with approved antennas and cables as specified by the FCC or a licensed wireless service provider. WARNING. E911 location information may not be provided or may be inaccurate for calls served by using this device. 11 Airbags are supplemental restraints only and will not deploy in all crash circumstances. Always use safety belts and seat children only in the rear, using restraint systems appropriate for their size and age. 12 These tires may ride less comfortably, make more noise and wear more quickly than other choices. To avoid tire, rim or vehicle damage, it is important that inflation pressure is regularly checked and maintained at optimum levels. High-performance tires are designed for optimum performance and handling in warm climates and are not suitable for cold, snowy or icy weather conditions. When driving during cold, snowy or icy weather conditions, ensure that your vehicle is equipped with appropriate all-season or winter weather tires. Tires are supplied and warranted by their manufacturer. 13 Always pay careful attention to the road, and do not drive while distracted. Audi connect[®] should be used only when it is safe and appropriate. Audi connect[®] services and features are optional, provided with the support of authorized affiliated and third-party service providers, and may require additional subscriptions with separate terms and conditions. Available on select models. Certain services collect location information; see Terms of Service for information about how to disable and for other details. Connect services are subject to technologies remaining commercially available; such services are not guaranteed and may not be available after 2021 for equipped MY17–20 vehicles. 14 Required compatible device. 15 Required myAudi app. Message and data rates apply. Do not use feature to locate stolen vehicle. 16 SiriusXM[®] and SiriusXM[®] Traffic subscriptions are sold separately or as a package after trial period and are continuous until you call SiriusXM[®] to cancel. See Customer Agreement for complete terms and more information at www.siriusxm.com. SiriusXM[®] Traffic service available in select markets. SiriusXM[®] U.S. Satellite Service available only to those in the 48 contiguous U.S.A., D.C. and Puerto Rico (with coverage limitations).

Technical Specifications

Engineering | Performance

	A7
Engine type	3.0-liter six-cylinder
Engine block/Cylinder head	Aluminum-alloy
Displacement (cc)/Bore and stroke (mm)	2,995/84.5 x 89.0
Horsepower (@ rpm)	335 @ 5,000–6,400
Torque (lb-ft @ rpm)	369 @ 1,370–4,500
Compression ratio	11.2:1
Valvetrain	24-valve DOHC with Audi valvelift system and variable valve timing
Induction/Fuel injection	Turbocharged/TFSI®
Start-stop engine system	■
Acceleration (0–60 mph)	5.2 sec ¹
Top track speed (mph)	130 ²

Transmission | Drivetrain

Seven-speed S tronic® dual-clutch automatic transmission and quattro® all-wheel drive	■
---	---

Body | Suspension | Chassis

Lightweight technology—multi-material construction	■
Five-link front and rear suspension	■
Sport suspension (20mm drop)	□
Adaptive damping suspension	□
Steering ratio	12.2:1
Electromechanical progressive steering system	■
Dynamic all-wheel steering	□
Ventilated front disc/Ventilated rear disc brakes (in)	13.3/13.0
Turning circle, curb-to-curb (ft)	36.4

Exterior measurements

	A7
Wheelbase (in)	115.2
Length (in)	195.6
Height (in)	56.0
Overall width with mirrors (in)	83.4
Track, front/rear (in)	65.0/64.4
Curb weight (lb)	4,332
Drag coefficient (Cw)	0.28

Interior measurements

Head room, front (in)	37.0
Head room, rear (in)	37.1
Leg room, front (in)	41.3
Leg room, rear (in)	37.0
Shoulder room, front (in)	57.2
Shoulder room, rear (in)	55.9
Cargo volume, rear seatbacks up (cu ft)	24.9
Seating capacity	5

EPA mileage estimates | Capacities

Fuel Economy (city/highway/combined)	NA ³
Engine oil (qt)	8
Fuel (gal)	19.3 ⁴
Minimum fuel grade required	Premium

■ Standard □ Available NA Information not available at time of printing

¹ Always obey all speed and traffic laws. ² Top track speed is electronically limited in the U.S. Always obey all speed and traffic laws. ³ 2019 EPA estimates not available at time of printing. See www.fueleconomy.gov for details. Your mileage will vary and depends on several factors, including your driving habits and vehicle condition. ⁴ Never drive until the tank is completely empty. The irregular supply of fuel that results from that can cause engine misfires. Uncombusted fuel will then enter the exhaust system. This can cause overheating and damage to the catalytic converter.

Wheels



19" 10-Y-spoke design



Standard

20" 5-double-V-spoke design



20" Wheel package

21" 5-V-spoke-star design, Gray/polished finish



21" Wheel package¹

Exterior Colors

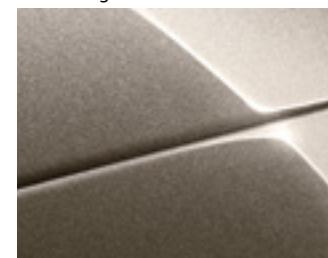
Brilliant Black



Ibis White



Carat Beige metallic



Firmament Blue metallic



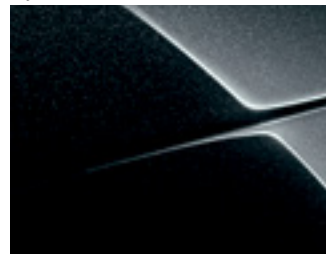
Florett Silver metallic



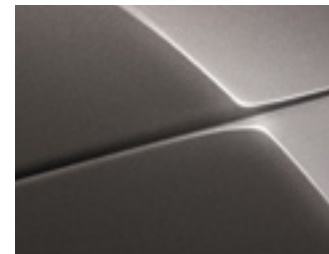
Glacier White metallic



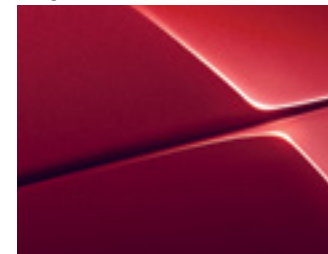
Mythos Black metallic



Soho Brown metallic¹



Tango Red metallic

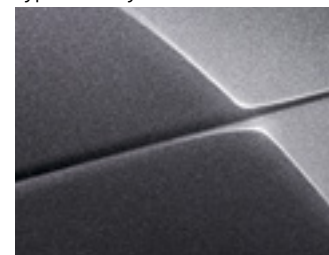


S line[®] package

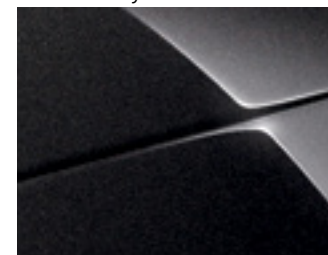
Triton Blue metallic



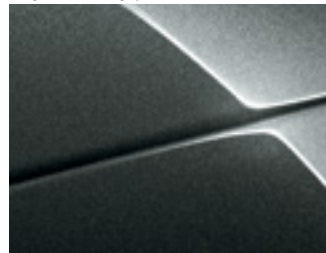
Typhoon Gray metallic¹



Vesuvius Gray metallic



Daytona Gray pearl



S line[®] package

¹ S line[®] package only. Wheel and tire options will vary based on model, trim level and package and may increase price. See your dealer for details.

¹ Without S line[®] package only. Exterior color options will vary based on model, trim level and package and may increase price. See your dealer for details.

Interior Inlays

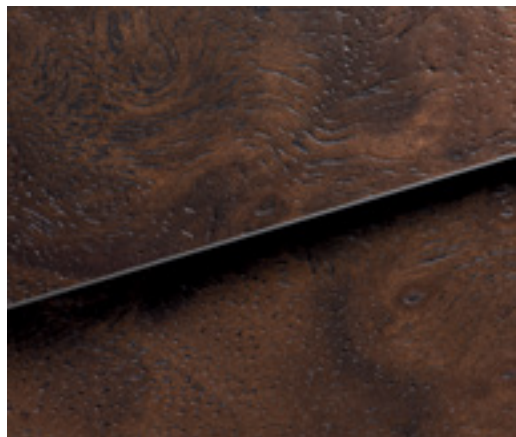


Gray/Brown Fine Grain Ash Natural Wood



Standard

Dark Brown Walnut Natural Wood



Optional

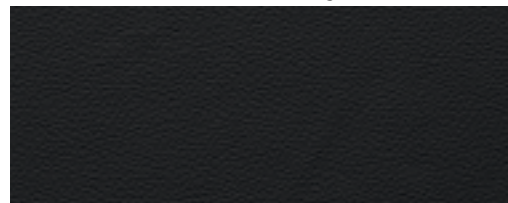
Achat Gray Fine Grain Birch Natural Wood



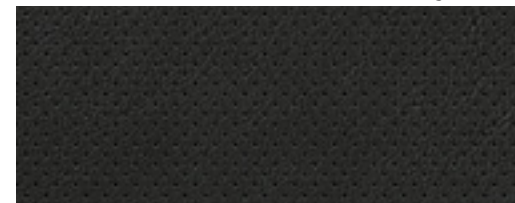
Individual Contour Seating package

Interior Colors

Black leather with contrast stitching



Black Perforated leather with contrast stitching



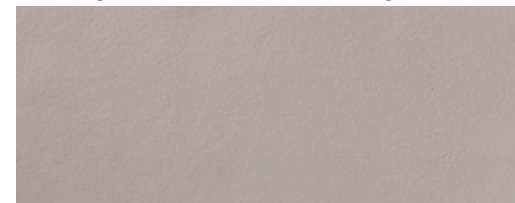
Warm Weather package or A7 Prestige

Black Perforated Valcona leather with Gray contrast stitching and piping



Individual Contour Seating package

Pearl Beige leather with contrast stitching



Pearl Beige Perforated leather with contrast stitching



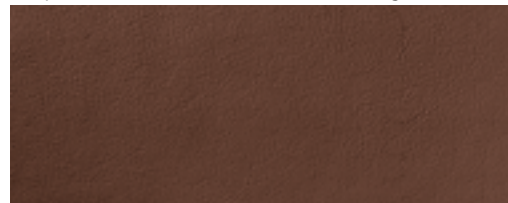
Warm Weather package or A7 Prestige

Pearl Beige Perforated Valcona leather with Gray contrast stitching and piping

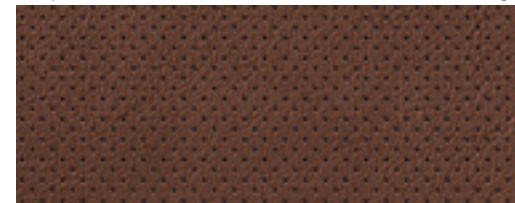


Individual Contour Seating package

Okapi Brown leather with contrast stitching



Okapi Brown Perforated leather with contrast stitching



Warm Weather package or A7 Prestige

Sarder Brown Perforated Valcona leather with Gray contrast stitching and piping



Individual Contour Seating package