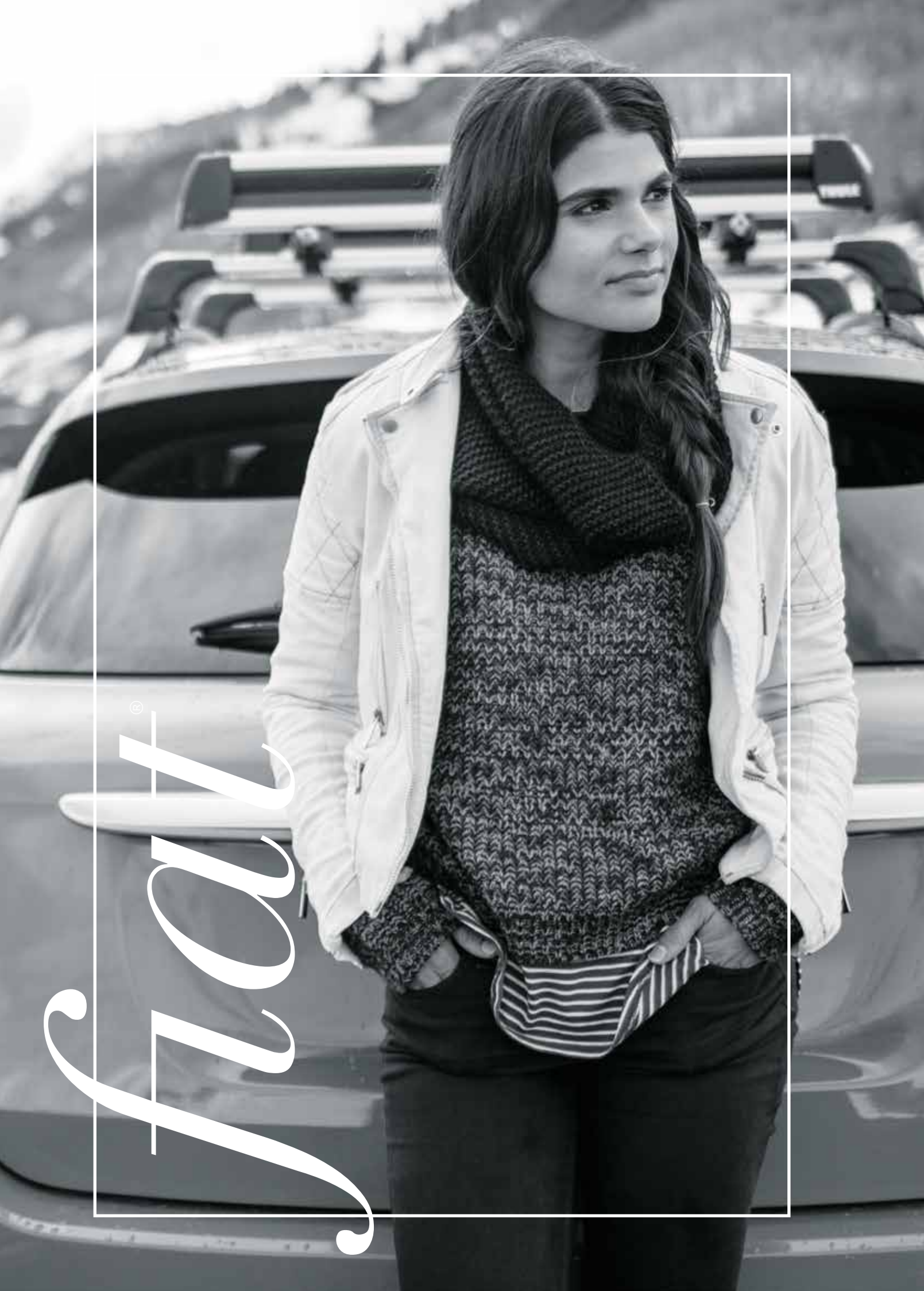


FIAT® 500X





Driving a FIAT® 500X, with its available All-Wheel Drive and muscular build, is like hanging with that super-confident, athletic friend who pushes you to seek out more adventure in your day. Its Italian charm will win over friends and family alike, and it has the extra room to invite them along. With lots of ways to personalize, it lets you be you. In all, the 500X is more than a great companion—it's a great influence.

UNMISTAKABLY ITALIAN. It should be no surprise that the FIAT 500X was designed at Centro Stile in Turin, Italy. With design cues that capture the charm and charisma of that very first Nuova Cinquecento, the 2017 FIAT 500X boldly infuses the crossover segment — and its drivers — with the FIAT spirit of innovation and functionality.



500X Highlights

FIAT® 500X checks all the boxes with 4 doors, available All-Wheel Drive, performance, roominess, “techy-ness,” safety and security features — and some unexpected extras.

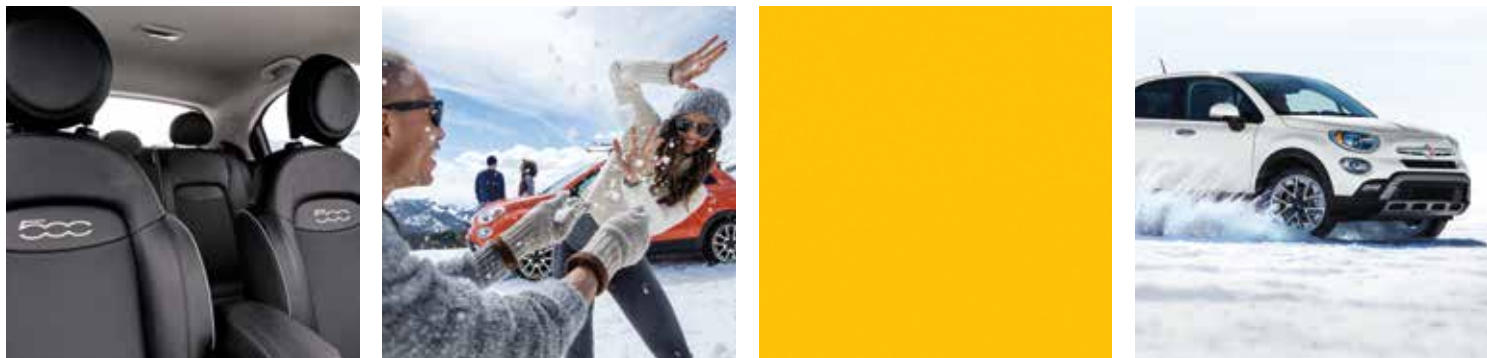


FIAT 500X POP

- 1.4L 16V MultiAir® Turbo I-4 — 160 hp/184 lb-ft of torque with 6-speed manual
- 2.4L 16V Tigershark® with MultiAir2 I-4 — 180 hp/175 lb-ft of torque and 9-speed automatic with AutoStick — Available
- All-Wheel-Drive (AWD) System — Available
- FIAT Dynamic Selector with 3 modes: Auto, Sport and Traction+ (with optional AWD)
- Lower body cladding
- Chrome exterior accents
- Projector headlamps
- Power, heated exterior mirrors with turn signals
- 3.5-inch Black and White cluster display
- Cloth bucket seats
- Front-passenger forward fold-flat seat
- 60/40 split-folding rear seats
- Steering-wheel audio and cruise controls
- Radio 3.0 with integrated 4-line display
- Remote keyless entry
- Security alarm
- Dual-pane power sunroof — Available
- BeatsAudio™ Premium Sound System — Available

FIAT 500X LOUNGE

- 2.4L 16V Tigershark with MultiAir2 I-4 and 9-speed automatic with AutoStick
- AWD System — Available
- FIAT Dynamic Selector with 3 modes: Auto, Sport and Traction+
- Lower body cladding
- Chrome exterior accents including bottom window trim
- Dual-Zone Automatic Temperature Control (ATC)
- Ambient interior lighting
- Power 8-way driver seat with 4-way lumbar adjuster
- Heated front seats
- Heated, premium-wrapped steering wheel with audio and cruise controls
- Windshield wiper de-icer
- Premium Audio System
- Uconnect 6.5-inch touchscreen radio with GPS Navigation and Bluetooth
- SiriusXM Traffic² and SiriusXM Travel Link²
- ParkView® Rear Back-Up Camera³
- Dual-pane power sunroof — Available
- BeatsAudio Premium Sound System — Available



FIAT 500X TREKKING

- 2.4L 16V Tigershark with MultiAir2 I-4 and 9-speed automatic with AutoStick
- AWD System — Available
- FIAT Dynamic Selector with 3 modes: Auto, Sport and Traction+
- Rugged lower body cladding plus front and rear fascia
- Satin Silver exterior accents
- Cornering front fog lamps
- Automatic projector headlamps
- Deep-tint sunscreen glass
- Adjustable cargo floor
- 3.5-inch color cluster display
- Premium-wrapped steering wheel with audio and cruise controls
- Leather-wrapped shift knob
- Uconnect® 5.0-inch touchscreen radio with Integrated Voice Command¹* and Bluetooth®
- SiriusXM® Satellite Radio²
- Keyless Enter 'n Go™ with push-button start
- Remote Start System
- Dual-pane power sunroof — Available
- BeatsAudio Premium Sound System — Available



500X POP



500X TREKKING



500X LOUNGE





FIAT® 500X Pop

EVERYBODY'S IN: THE FIAT® 500X POP MOVEMENT

This 500X is all about accessibility. New for 2017, the 500X Pop lets you opt for All-Wheel Drive and its accompanying FIAT® Dynamic Selector. The 1.4L MultiAir® Turbo engine with 6-speed manual transmission comes standard, along with these desired features: air conditioning, cruise control, Uconnect® Radio 3.0 and Media Hub with USB and auxiliary ports, steering wheel-mounted controls, deluxe cloth seating, 60/40 split-folding rear seats, power heated body-color mirrors with turn signal indicator and more. With its “go anywhere, anytime” spirit, the 500X Pop will not only reflect popular culture, it will help inspire it.



CINQUECENTO CROSSES OVER

The brawny good looks of the 500X Trekking will give you the nudge you need to make good on those dreams of adventure. Standard fare includes rugged-looking vinyl/cloth seating, unique front and rear “rugged appearance” fascias, automatic headlamps, front cornering fog lamps and unique 17-inch wheels. And with standard Keyless Enter 'n Go™ and Remote Start systems, there are no excuses — just get out there!



CONFIDENCE: ALL-WHEEL DRIVE STYLE

The FIAT® 500X is the first in the 500 family to offer the confidence of available All-Wheel Drive (AWD), with a unique system that brings innovative functionality to conventional AWD. Its disconnecting rear axle helps to improve fuel efficiency by automatically selecting Front-Wheel Drive (FWD) or AWD when road conditions make it necessary. On the 500X Trekking model, it's paired with the added power and capabilities of the 2.4-liter Tigershark® MultiAir®2 I-4 engine and 9-speed automatic transmission. Of course, even the most adventuresome spirits would rather not “rough it.” 500X Trekking gladly accommodates with available features like leather-trimmed seats, eight-way power driver seat with four-way power lumbar adjuster, heated steering wheel and front seats, Dual-Zone automatic temperature-controlled climate system, BeatsAudio™ Premium Sound System, dual-pane power sunroof and 18-inch aluminum wheels.



FIAT® 500X Trekking

BIG SKY TO GO

Designers thought outside its eye-catching, iconic lines to make the most of the views that surround the FIAT® 500X. By adding an available dual-pane power sunroof with a sliding panoramic panel, they created a wide, spacious feeling wherever you go. The roof's glass panels match seamlessly with the body sheet metal, and light is easily managed with a manual sunshade. This is how to turn heads both inside and outside of 500X.

YOU'VE ARRIVED EVERY TIME YOU SET OUT

As the name suggests, the 500X Lounge will be your go-to place to unwind — its available premium leather-trimmed seats, standard heated front seats, an eight-way power driver seat with four-way power lumbar adjuster, leather-wrapped shift knob and a premium-wrapped heated steering wheel all encourage you to stay awhile. The available Premium Package includes a dual-pane power sunroof, BeatsAudio™ Premium Sound System with 9 speakers including subwoofer, and striking 18-inch wheels for improved views and sounds. The 500X Lounge also shares its street smarts: its user-friendly navigation via the Uconnect® 6.5-inch touchscreen, ParkView® Rear Back-Up Camera³ with active grid lines, available ParkSense® Rear Park Assist System³, available Blind Spot Monitoring (BSM)⁴ and Rear Cross-Path Detection³ all make you more aware of your surroundings.

FIAT® 500X Lounge



Exhilaration 101

FIAT® 500X engineers delivered the kind of awe-inspiring crossover performance that's designed to convince even more drivers to cross over to FIAT.

FIAT® 500X offers two extraordinary engine options, starting with the 1.4-liter MultiAir® Turbo four-cylinder that comes standard on Pop FWD models. Paired with a 6-speed manual transmission, this powerplant generates 160 horsepower and 184 lb-ft of torque — giving Pop a snappy performance true to its name.



Standard on most 500X models (and available on Pop FWD), the 2.4-liter Tigershark® I-4 engine with MultiAir2 steps things up even more. It utilizes electrohydraulic Variable Valve Timing (VVT) and Variable Valve Lift (VVL) technology, producing 180 horsepower and 175 lb-ft of torque. Its extremely sophisticated technology has been widely praised in tandem with its 9-speed transmission. This dynamic duo optimizes engine output so you can look forward to fast, assertive launches and smooth, power-when-you-need-it delivery on the highway.



FIAT 500X features the available Dynamic Selector to help you make the most of the road ahead. It uses the Electronic Stability Control (ESC)⁵ system, braking system management and engine response optimization to enhance driving. Choose from three customized traction modes for optimal performance: the basic **AUTO MODE** is designed for the everyday, routine trips — it will help optimize fuel efficiency and riding comfort. In **SPORT MODE**, ESC⁵ and steering calibrations are tuned for a sportier feel and faster driving response. Additionally, Sport mode optimizes the transmission for lateral dynamics in All-Wheel Drive. The **TRACTION+ MODE** maximizes low-speed traction — the kind you need when things get a little slick or bumpy. It all works by providing additional wheel-slip through specially tuned chassis controls and a more-direct engine response.



X ON WHEELS

The FIAT® Dynamic Selector helps make the most of the road ahead with three customized traction modes for optimal performance.



INSTANTLY ADAPTS The disconnecting rear axle helps make the FIAT 500X stand out as one very adaptable, fuel-efficient, AWD-capable crossover. With its ability to automatically switch from FWD to AWD and back, it provides a no-brainer boost to automatic traction.



FIAT 500X Powertrain



ALL AVAILABLE



HEATED STEERING WHEEL



HEATED FRONT SEATS



REMOTE START



KEYLESS ENTER 'N GO™



PUSH-BUTTON START

THOUGHTFUL ACCOMMODATIONS

FIAT® 500X designers are extremely deliberate — every detail is carefully considered. Personal style is encouraged with an array of distinctive color and material choices, including available premium perforated leather trim seating on Trekking and Lounge models. Engineers delivered superior torsional rigidity and noise, vibration and harshness (NVH) applications that contribute to the exceptionally quiet FIAT 500X cabin. It's a place where form, function, drivers and passengers all live happily together.



GREAT CONNECTIONS

With the available Uconnect® system, your FIAT® 500X becomes more than just a mode of transportation — it's your portal to the world.



Expert Briefing

Stunning visuals and advanced audio and voice technologies deliver up-to-the-minute intel, keeping drivers and passengers fully informed.

The FIAT® 500X interior is designed to feel like a refuge — but with Uconnect®, it allows you to invite the whole world in. Large 5.0- or 6.5-inch touchscreens and hands-free¹ technologies deliver essential information and entertainment while keeping you focused on driving. Depending on the system, you can enjoy a wide range of services: Integrated Voice Command¹ with Bluetooth® gives you hands-free phone¹, voice command¹ and streaming audio; SiriusXM® Satellite Radio² offers commercial-free music, sports, news and more; SiriusXM Travel Link² alerts you to local weather, fuel prices, movies and sports; SiriusXM Traffic² gets you there faster with the latest construction, accident and highway reports; GPS Navigation with 3-D city and terrain maps; and Siri® Eyes Free⁶ fully integrates your iOS mobile device with the audio system. See specifications for available systems and services.

The Uconnect 3.0 4-Line Full-LCD Radio is the entry level Uconnect radio that provides full support for digital music via USB and auxiliary connections, media players, iPods®, iPhones® and smartphones while charging the device. It also shows music information and browsing functions.

Instantly access a range of useful information from the standard 3.5-inch Black and White cluster display or the available full-color Electronic Vehicle Information Center (EVIC) comprised of a Thin Film Transistor (TFT) Liquid Crystal Display (LCD) on your instrument cluster. From safety alerts to fuel usage to FIAT Dynamic Selector data, the 500X reconfigurable display lets you customize what you see, and clear graphics make them easy to read.



FIAT 500X Technology



Lots of *play* room



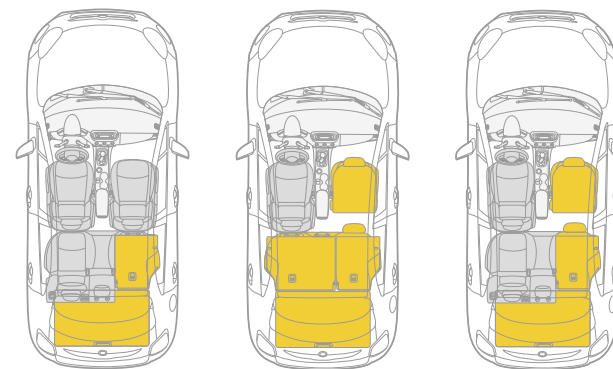
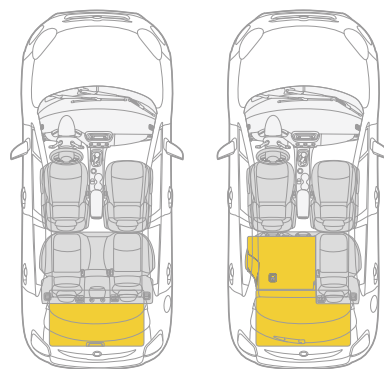
A MUSICAL SCORE

Every trip has its own soundtrack when you turn to the superior sounds generated by the available BeatsAudio™ Premium Sound System by Dr. Dre. Get studio-quality sound, just the way the artist intended. The system has an 8-channel performance with 506 watts of power and nine speakers, including a 6.5-inch subwoofer specifically tuned for the FIAT® 500X.



PLENTY OF ROOM FOR FIVE

With FIAT® 500X, the X could very well stand for “extra room.” This FIAT delivers enough space to welcome five — with cubic feet to spare. The utility of its interior makes the seemingly impossible possible — or at least a heck of a lot more comfortable than you imagined. A large rear cargo area, height-adjustable rear cargo floor, 60/40 second-row split seats and a fold-forward front-passenger seat accommodate the longer, wider and taller things you once said “forget it” to. Plus, you can keep all your other stuff stashed and organized, thanks to genius storage solutions like a dual glove box with a locking lower portion. A center-console storage area serves as home base for device connectivity with its integrated USB and auxiliary ports plus 12-volt power outlet. All four doors cleverly include bottle holders and map pockets.



The richly appointed interior of FIAT® 500X
extended trips and adventures. Let's just say

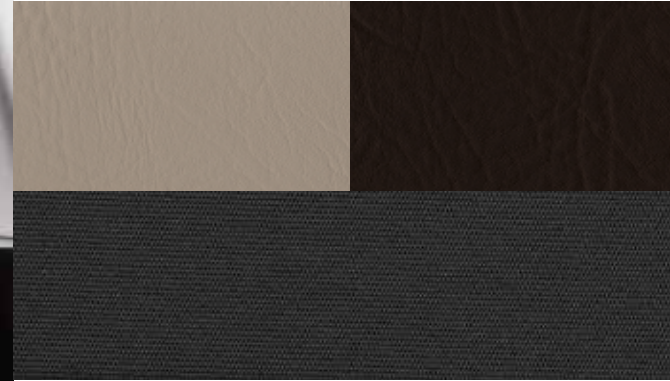
inspires and anticipates
it's very accommodating.

500X Interior Colors

Black Fabric with Black and Anthracite Tex Cloth with White Piping
Standard on Pop



Black Fabric with Grey/Black Trekking Cloth
Standard on Trekking



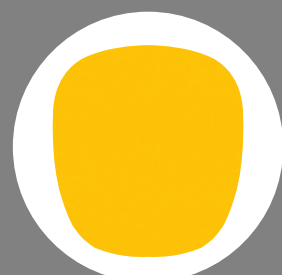
Light Dove Grey or Dark Brown Fabric with Dark Grey Cloth
Standard on Lounge



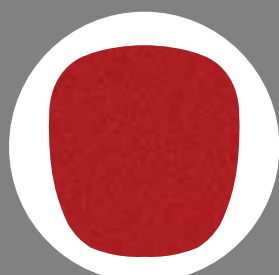
Black Perforated Leather Trim
Available on Trekking and Lounge



Tobacco Perforated Leather Trim
Available on Trekking and Lounge



GIALLO TRISTRATO
Yellow Tri-coat



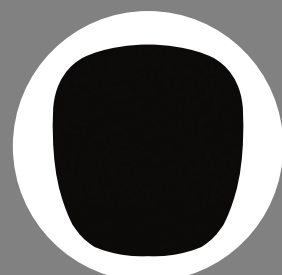
ROSSO AMORE
Red Tri-coat



ARANCIO
Orange



BLU VENEZIA
Blue Metallic



NERO CINEMA
Black



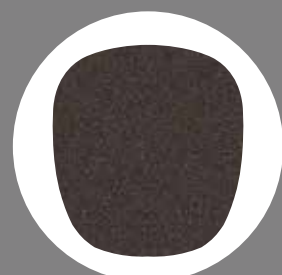
GRIGIO ARGENTO
Grey Metallic



BIANCO GELATO
White



ROSSO PASSIONE
Red Hypnotique



BRONZO MAGNETICO
Bronze Metallic



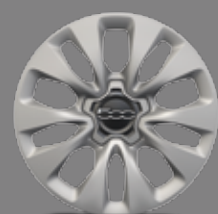
NEW RAME CHIARO*
Light Copper



NEW CIELO BLU*
Sky Blue



NEW GRIGIO GRAPHITE*
Graphite Grey



16-INCH STEEL WITH GRAY PAINTED WHEEL COVER
Standard on Pop FWD



16-INCH ALUMINUM WITH BRIGHT SILVER FINISHING
Available on Pop



17-INCH 5-WEDGE-SHAPED-SPOKE MACHINED ALUMINUM WITH MATTE BLACK POCKETS
Standard on Pop AWD
Available on Pop FWD



17-INCH 5-SPOKE MACHINED ALUMINUM WITH PAINTED POCKETS
Standard on Trekking



18-INCH MACHINED ALUMINUM WITH POLISHED AND MATTE PAINTED SPOKES
Available on Trekking



17-INCH SIX-SPLIT-SPOKE ALUMINUM
Standard on Lounge



17-INCH ALUMINUM WITH BRIGHT SILVER FINISHING*
Standard on Lounge



18-INCH 20-SPOKE MACHINED ALUMINUM WITH PAINTED POCKETS
Available on Lounge

All-Wheel Drive makes it heavenly



FIAT® 500X Trekking shown in Giallo Tristrato.

FIAT® 500X is an IIHS Top Safety Pick†. It starts with its framework, while advanced features and sensors further serve to protect.

GREAT VISIBILITY

A windshield wiper de-icer, rain-sensitive windshield wipers, Auto High-Beam Headlamp Control, rearview auto-dimming mirror and cornering front fog lamps all make things extraordinarily clear. Available.

IN COMMAND

Count on a 4-wheel antilock disc brake system, Electronic Stability Control (ESC),⁵ Electronic Roll Mitigation and Hill Start Assist to keep your driving on course. Standard.



ON GUARD

A high-strength steel unibody, comprehensive 7-air bag⁷ system, front-passenger seat BeltAlert (LAX), Child Seat Anchor System (LATCH) and three rear-seat head restraints⁸ all work to shield occupants during impacts. Standard.

BE FOREWARNED

Full-Speed Forward Collision Warning with Active Braking (FSFCW+),⁹ Keyless Enter 'n Go,TM LaneSense® Lane Departure Warning with Lane Keep Assist (LDW+),¹⁰ ParkView® Rear Back-Up Camera,³ ParkSense® Rear Park Assist System,³ Blind Spot Monitoring (BSM)⁴ and Rear Cross-Path Detection,³ and Tire Pressure Monitoring System alert you ahead of time. Available.

FIAT® 500X Specifications

	POP	TREKKING	LOUNGE
ENGINES		TRANSMISSIONS	
1.4L MultiAir® Turbo I-4			
2.4L Tigershark® I-4 with MultiAir2			
MECHANICAL FEATURES			
Drive System — Front-Wheel Drive (FWD)	•	•	•
All-Wheel Drive (AWD) with rear-axle disconnect	○	○	○
Dynamic Selector — With 3 modes: Auto, Sport and Traction+ (standard on Pop AWD)	○	•	•
Electronic Stability Control ⁵	•	•	•
Steering — Electric power steering (EPS), rack and pinion, with variable-speed sensitivity	•	•	•
Manual tilt and telescoping column	•	•	•
Suspension — MacPherson front with coil springs and twin-tube struts with stabilizer bar; Chapman rear with coil springs and twin-tube shock absorbers with KONI® FSD technology	•	•	•
EXTERIOR FEATURES			
Bodyside — Lower sill and wheel arch accent moldings in Black	•	•	•
Door Handles — Chrome finish	•		•
Satin Silver finish		•	
Daylight Opening (DLO) accent moldings — Black	•	•	
Chrome bottom molding			•
Exhaust Tip — Bright Chrome	•	•	•
Fascia — Body-color front and rear	•		•
Satin Silver accent-/body-color front and rear		•	
Fuel Tank — 12.7-gallon (48-liter) capacity	•	•	•
Fuel Door — Capless fuel filler	•	•	•
Glass — Deep-tint, sunscreen, 2nd row and cargo area		•	•
Lighting — Bifunctional halogen projector headlamps	•	•	•
Automatic headlamps		•	•
Auto High-Beam Headlamp Control (packaged with Advanced Safety Package)		P	P
Cornering front fog lamps (requires automatic headlamps)		•	•
Daytime running headlamps (DRLs)	•	•	•
Incandescent taillamps	•	•	•
Supplemental turn signal on mirror	•	•	•
License Plate Bracket — Front	•	•	•
Mirrors — Power adjustable, power heated with supplemental turn signal in body color	•	•	•
Roof Rails — Black (packaged with Mopar® Adventure Package)	P	P	P
Adjustable crossbars (packaged with Mopar Adventure Package; not available with dual-pane power sunroof)	P	P	P
Bright (packaged with Trekking Popular Equipment Package; not available with dual-pane power sunroof)		P	
Sunroof — Power, dual-pane panoramic (packaged with Trekking and Lounge Premium Packages)	○	P	P
Tires — 215/60R16 All-Season (FWD models only)	•		
215/55R17 BSW All-Season (FWD models only; packaged with 17-inch 5-wedge-shaped-spoke wheels)	P	•	•
215/60R17 BSW All-Season (AWD models only)	•	•	•
225/45R18 BSW All-Season (packaged with 18-inch wheels on FWD models)		P	P
215/55R18 All-Season (packaged with 18-inch wheels on AWD models)		P	P
Tire Service Kit	•	•	•
Wheels — 16-inch steel with Silver Gray painted wheel cover (FWD models only)	•		
16-inch aluminum with Bright Silver finishing (requires Pop Popular Equipment Package; FWD models only)	○		
17-inch 5-wedge-shaped-spoke machined aluminum with Matte Black pockets (standard on Pop AWD)	○		
17-inch 5-spoke machined aluminum with painted pockets		•	
17-inch aluminum with Bright Silver finishing (late availability)			•
18-inch machined aluminum with Polished and Matte painted spokes (packaged on Trekking Premium Package)		O/P	
18-inch 20-spoke machined aluminum with painted pockets (packaged on Lounge Premium Package)			O/P
Windows — Power front and rear with front 1-touch up/down and rear express down	•	•	•
Wiper System — Front, variable/intermittent	•	•	•
Rear, defroster and wipers/washer	•	•	•
Rain-sensitive windshield (packaged with Advanced Safety Package)		P	P

†Applies to models built after July 2015.

FIAT® 500X Specifications (continued)

	POP	TREKKING	LOUNGE
Windshield de-icer (packaged with Cold Weather Package)		P	•
INTERIOR FEATURES			
Air Conditioning	•	•	
Automatic Temperature Control (ATC) — With Dual-Zone controls (packaged with Trekking Popular Equipment Package)		P	•
Armrest — Front-center, sliding, vinyl-wrapped, coordinated with seat color (packaged with 2.4L/9-speed on Pop; standard on Pop AWD)	P	•	•
Assist Handles — Driver and passenger	•	•	•
Cargo Area — Lamp, rear	•	•	•
Compartment cover		•	•
Height-adjustable floor		•	•
Tie down D-ring loops, 4	•	•	•
Console — Center, floor with 2 front cup holders	•	•	•
Front, overhead with map lights	•	•	•
Door Locks — Power, speed-sensitive	•	•	•
Electronic Vehicle Information Center (EVIC) — 3.5-inch Thin Film Transistor (TFT) Black and White display	•		
3.5-inch TFT full-color display		•	•
Floor Mats — Front and rear (packaged with Pop Popular Equipment Package)	P	•	•
Glove Box — Front-passenger with lamp	•	•	•
Heater Booster (included with 1.4L engine)	•		
Instrument Panel — Exterior body-color	•		•
Accent interior color		•	
Lighting — Cargo compartment	•	•	•
Reading/map lamps on overhead console	•	•	•
Illuminated entry	•	•	•
Ambient interior (packaged with Trekking Popular Equipment Package)		P	•
Media Hub — Located at center console; front includes Remote USB port and auxiliary input jack	•	•	•
Mirrors — Rearview, manual day/night adjust	•	•	
Rearview, auto-dimming			•
Sun visors with vanity mirrors	•		
Sun visors with illuminated vanity mirrors		•	•
Outside Temperature Display located in EVIC	•	•	•
Power Outlet — 12-volt auxiliary	•	•	•
Seating — Black fabric with Black/Anthracite Tex Cloth with White piping	•		
Black fabric with Grey/Black Trekking cloth		•	
Light Dove Grey or Dark Brown fabric with Dark Grey cloth			•
Premium perforated leather trim in Black or Tobacco		O	O
Seats, Front — Fold-forward passenger	•	•	•
Heated driver and passenger (packaged with Cold Weather Package)		P	•
Driver and front-passenger height adjuster	•	•	•
Manual 6-way driver and passenger	•	•	
Power 8-way driver seat with 4-way power lumbar adjuster and manual passenger adjuster (packaged with Trekking Popular Equipment Package)		P	•
Seatback map pockets	•	•	•
Seating, Rear — 60/40 split-folding seat	•	•	•
3 head restraints ⁸	•	•	•
Shift Knob — Black	•		
Black, leather-wrapped with Chrome accent (packaged with Pop Popular Equipment Package)	P	•	•
Steering Wheel — Urethane	•		
Premium-wrapped with audio and cruise controls (packaged with Pop Popular Equipment Package)	P	•	•
Heated (packaged with Cold Weather Package)		P	•
Mounted audio controls	•	•	•
UCONNECT®/MULTIMEDIA			
Remote USB Port — Located in center console storage bin (packaged with Pop Popular Equipment Package)	P	•	•
Speakers — 4	•		
6 (packaged with Pop Popular Equipment Package)	P	•	
8-speaker Premium Audio System			•
BeatsAudio™ Premium Sound System — 9-speakers including subwoofer (packaged with Trekking and Lounge Premium Packages; requires Pop Popular Equipment Package on Pop models)	O	P	P
SiriusXM® Satellite Radio ² — Includes 1-year trial subscription (packaged with Uconnect 5.0)	P	•	•
SiriusXM Traffic ² — Includes 5-year trial subscription (packaged with Uconnect 6.5 NAV)		O	•

FIAT® 500X Specifications (continued)

	POP	TREKKING	LOUNGE
UCONNECT®/MULTIMEDIA (continued)			
SiriusXM® Travel Link ² — Includes 5-year trial subscription (packaged with Uconnect 6.5 NAV; requires SiriusXM Satellite Radio ²)		O	•
Radio 3.0 — Includes AM/FM radio, integrated 4-line display and speed-adjusted volume	•		
Uconnect 5.0 — 5.0-inch touchscreen display, Integrated Voice Command ¹ with Bluetooth® for hands-free phone ¹ , voice command ¹ and streaming audio, AM/FM radio and SiriusXM Satellite Radio ² with 1-year trial subscription (packaged with Pop Popular Equipment Package)	P	•	
Uconnect 6.5 NAV — 6.5-inch touchscreen, GPS Navigation with 3-D city and terrain maps, Integrated Voice Command ¹ with Bluetooth for hands-free phone ¹ , voice command ¹ and streaming audio, SiriusXM Traffic ² and SiriusXM Travel Link ² (including 5-year trial subscription), HD radio, AM/FM radio, Siri® Eyes Free ⁶ for iPhone® integration and compass gauge		O	•
SAFETY AND SECURITY			
Air Bags ⁷ — Advanced multistage front	•	•	•
Driver's-side knee bolster	•	•	•
Supplemental front seat-mounted	•	•	•
Supplemental side-curtain front and rear	•	•	•
BeltAlert — Front-passenger seat	•	•	•
Blind Spot Monitoring (BSM) ⁴ and Rear Cross-Path Detection ³ (packaged with Advanced Safety Package)		P	P
Brake System — 4-wheel antilock disc	•	•	•
Electric Park Brake	•	•	•
Child Seat Anchor System (LATCH-ready)	•	•	•
Electronic Stability Control (ESC) ⁵	•	•	•
Electronic Roll Mitigation	•	•	•
Hill Start Assist	•	•	•
Full-Speed Forward Collision Warning with Active Braking (FSFCW+) ⁹ (packaged with Advanced Safety Package)		P	P
LaneSense® Lane Departure Warning with Lane Keep Assist (LDW+) ¹⁰ (packaged with Advanced Safety Package)		P	P
ParkSense® Rear Park Assist System ³ (packaged with Pop Popular Equipment Package and Advanced Safety Package on Trekking and Lounge models)	P	P	P
ParkView® Rear Back-Up Camera ³ (packaged with Pop Popular Equipment Package and Trekking Popular Equipment Package)	P	P	•
Remote Entry — Keyless/Illuminated Entry System (included with 1.4L/6-speed manual)	•		
Keyless Enter 'n Go™ (requires 2.4L engine; standard on Pop AWD)	O	•	•
Remote Start System (requires 2.4L engine; standard on Pop AWD)	O	•	•
Sentry Key® Engine Immobilizer	•	•	•
Tire Pressure Monitoring System	•	•	•
Vehicle Theft Security Alarm	•	•	•
GROUPS AND PACKAGES			
Advanced Safety Package — FSFCW+ ⁹ , LDW+ ¹⁰ , BSM ⁴ and Rear Cross-Path Detection ³ , ParkSense Rear Park Assist System ³ , rain-sensitive windshield wipers and Auto High-Beam Headlamp Control (requires Trekking Popular Equipment Group)		O	O
Cold Weather Package — Includes heated front seats, heated steering wheel and windshield wiper de-icer		O	
Pop Popular Equipment Package — Includes ParkView Rear Back-Up Camera ³ , ParkSense Rear Park Assist System ³ , Uconnect 5.0 radio, remote USB port, 6 speakers, front and rear carpeted floor mats, premium-wrapped steering wheel and leather-wrapped shift knob when equipped with the 2.4L engine (requires 6-speakers or BeatsAudio™ Premium Sound System; requires 16-inch aluminum wheel with Bright Silver finishing or 17-inch 5-wedge-shaped spoke aluminum wheels)	O		
Trekking Popular Equipment Package — Includes ParkView Rear Back-Up Camera ³ , Bright side roof rails, power 8-way driver seat with power 4-way lumbar adjuster and manual passenger adjuster, Dual-Zone Automatic Temperature Control (ATC) and ambient interior lighting (can replace roof rails with Trekking Premium Packages)		O	
Trekking Premium Package (FWD) — Includes dual-pane power sunroof, BeatsAudio Premium Sound System with 9 speakers including subwoofer and 18-inch machined aluminum wheels with polished and Matte painted spokes (package for front-wheel-drive models)		O	
Trekking Premium Package (AWD) — Includes dual-pane power sunroof, BeatsAudio Premium Sound System with 9 speakers including subwoofer and 18-inch machined aluminum wheels with polished and Matte painted spokes (package for all-wheel-drive models)		O	
Lounge Premium Package (FWD) — Includes dual-pane power sunroof, BeatsAudio Premium Sound System with 9 speakers including subwoofer and 18-inch 20-spoke machined aluminum with painted pockets (package for front-wheel-drive models)			O
Lounge Premium Package (AWD) — Includes dual-pane power sunroof, BeatsAudio Premium Sound System with 9 speakers including subwoofer and 18-inch 20-spoke machined aluminum with painted pockets (package for all-wheel-drive models)			O

• = Standard. O = Optional. P = Available within Package noted.



wild child



FIAT® 500X is designed to not only get you where you want to go but how you want get there — and adding Mopar® accessories means you can let your imagination run even further. Choose from bodyside, hood and roof graphics, equipment carriers, protective covers, guards, storage systems and more. See a complete listing of available accessories at mopar.com

500X shown with Black Roof Side Rails,* Removable Crossbars† Roof-Mount Ski and Snowboard Carrier,*† White Mirror Covers, White Bodyside Moldings and 18-Inch Bright White Diamond-Cut Wheels.

* Properly secure all cargo.

† Mounts to the removable Cross Bars and Roof Side Rails, each sold separately.

MOPAR® GROUPS AND PACKAGES

Mopar ATX Interior Athletic Appearance Group — Includes Mopar Premium Trekking Floor Mats, Mopar Bright Door Sills with Logo and Mopar Bright Pedal Kit (ATX) (requires 9-speed automatic transmission; not available with Mopar ATX Interior Urban Appearance Group and Mopar MTX Interior Appearance Group)	<input type="checkbox"/>	<input type="checkbox"/>	<input type="checkbox"/>
Mopar MTX Interior Appearance Group — Includes Mopar Bright Pedal Kit (MTX), Mopar Premium Floor Mats and Mopar Bright Door Sills with Logo (requires 6-speed manual transmission; not available with Mopar ATX Interior Urban Appearance Group)	<input type="checkbox"/>		
Mopar Checkered Graphics Package — Includes Mopar Checkered Lower Body Stripe and Mopar Hypnotic Red Mirror Caps; available in Nero Cinema, Giallo Tristrato, Bronzo Magnetico, Grigio Argento, Bianco Gelato and Blu Venezia	<input type="checkbox"/>	<input type="checkbox"/>	<input type="checkbox"/>
Mopar Italian Racing Appearance Package — Includes Mopar Italian Fender Emblem, Mopar Italian Racing Stripe Graphic and Mopar Hypnotic Red Mirror Caps; available in Nero Cinema, Giallo Tristrato, Bronzo Magnetico, Arancio, Grigio Argento, Bianco Gelato and Blu Venezia	<input type="checkbox"/>	<input type="checkbox"/>	<input type="checkbox"/>
Mopar ATX Interior Urban Appearance Group — Includes Mopar Premium Floor Mats, Mopar Bright Door Sills with Logo and Mopar Bright Pedal Kit (ATX) (requires 9-speed automatic transmission)	<input type="checkbox"/>	<input type="checkbox"/>	<input type="checkbox"/>
Mopar Special Edition Rebel Package — Includes Mopar "Rebel" Graphics Package and Mopar Hypnotic Red Mirror Caps; available in Nero Cinema and Grigio Argento	<input type="checkbox"/>	<input type="checkbox"/>	<input type="checkbox"/>
Mopar Adventure Package — Includes Mopar Side Roof Rails in Black with Mopar Adjustable Crossbars (not available with dual-pane power sunroof)	<input type="checkbox"/>	<input type="checkbox"/>	<input type="checkbox"/>
Mopar All-Weather Group — Includes Mopar Premium Floor Mats with Logo and Mopar Front Splash Guards without Logo and Rear Splash Guards with Logo (not available with the Mopar (ATX) Interior Athletic Appearance Group, Mopar (MTX) Interior Appearance Group and Mopar (ATX) Interior Urban Appearance Group)	<input type="checkbox"/>	<input type="checkbox"/>	<input type="checkbox"/>
Mopar Premium Exterior Appearance Package — Includes Mopar Chrome Hood Spear, Mopar Chrome License Plate Frame and Mopar Black Valve Stem Covers with Logo (not available with Mopar Italian Racing Appearance Package)	<input type="checkbox"/>	<input type="checkbox"/>	<input type="checkbox"/>

○ = Optional.