



1 9 9 7

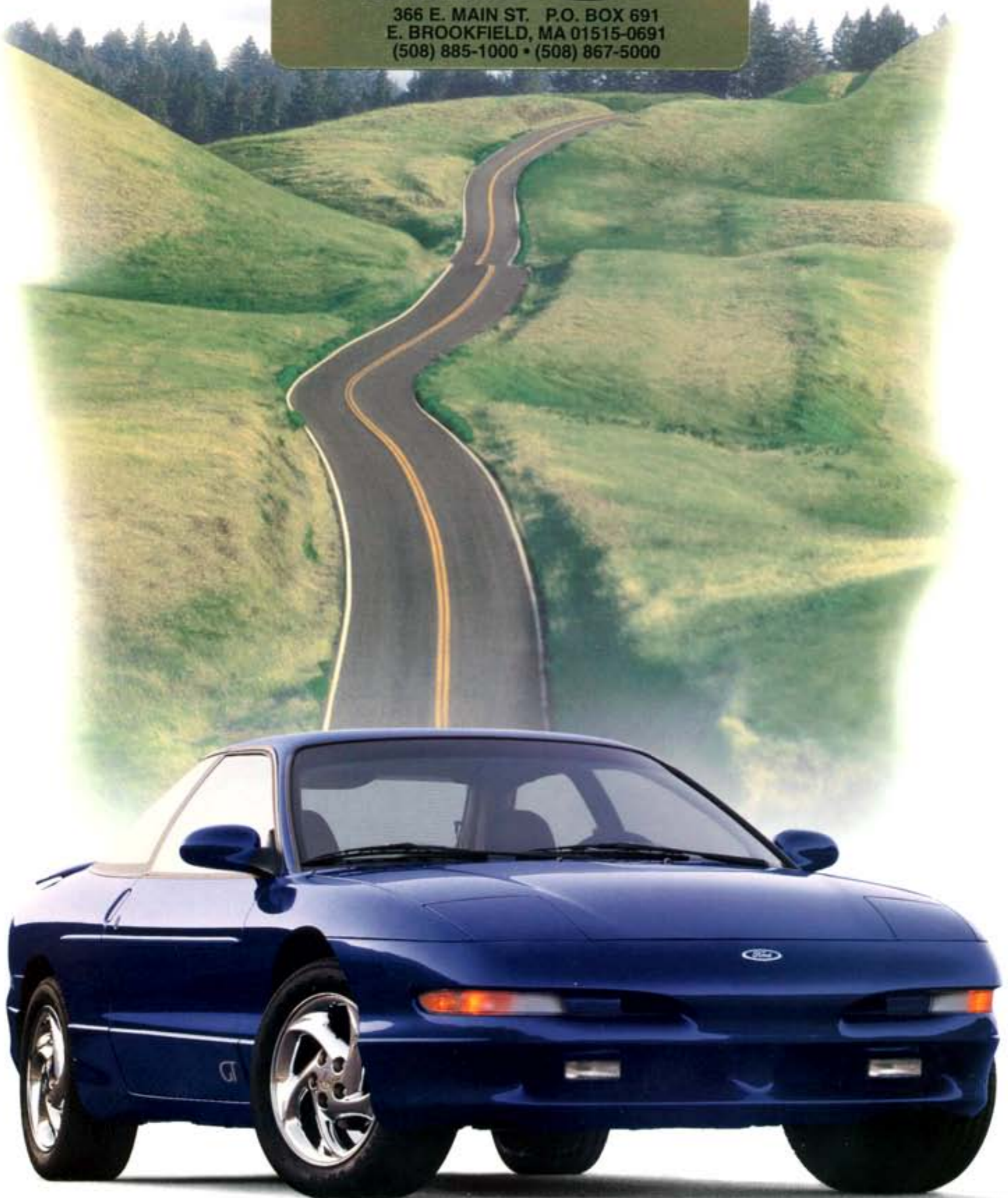
# PROBE

**LAMOUREUX**

"Where friends  
send their friends"



366 E. MAIN ST. P.O. BOX 691  
E. BROOKFIELD, MA 01515-0691  
(508) 885-1000 • (508) 867-5000



# Runs best on high-octane adrenaline



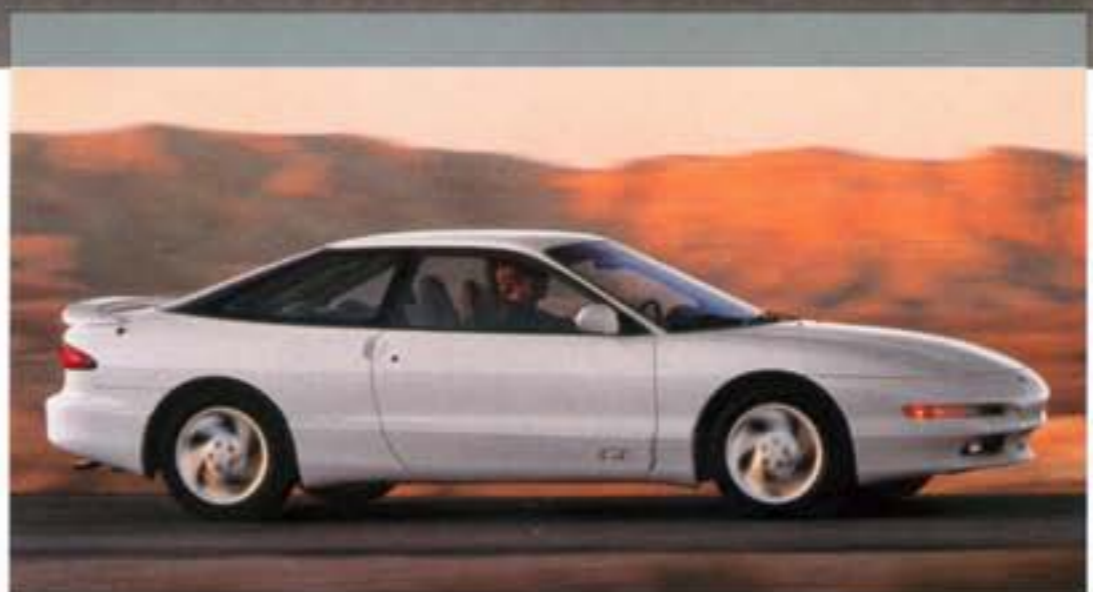
FORD PROBE GT. IT SUPPLIES THE ENERGY WITH A 24-VALVE, DUAL-OVERHEAD-CAM, 164-HORSEPOWER, 2.5-LITER V6 ENGINE WITH A MULTI-PORT FUEL-INJECTION SYSTEM. IT SUPPLIES THE EXCITEMENT WITH A SLEEK SHAPE AND AGILE SPORT SUSPENSION. YOU NEED ONLY SUPPLY YOUR ENTHUSIASM FOR THE ROAD. THEN GET READY FOR SOME SERIOUS DRIVING ENJOYMENT.



**ABOVE: PROBE GT** in Laser Red  
Tinted Clearcoat Metallic.

**AT RIGHT: PROBE GT**  
in Silver Frost Clearcoat Metallic.

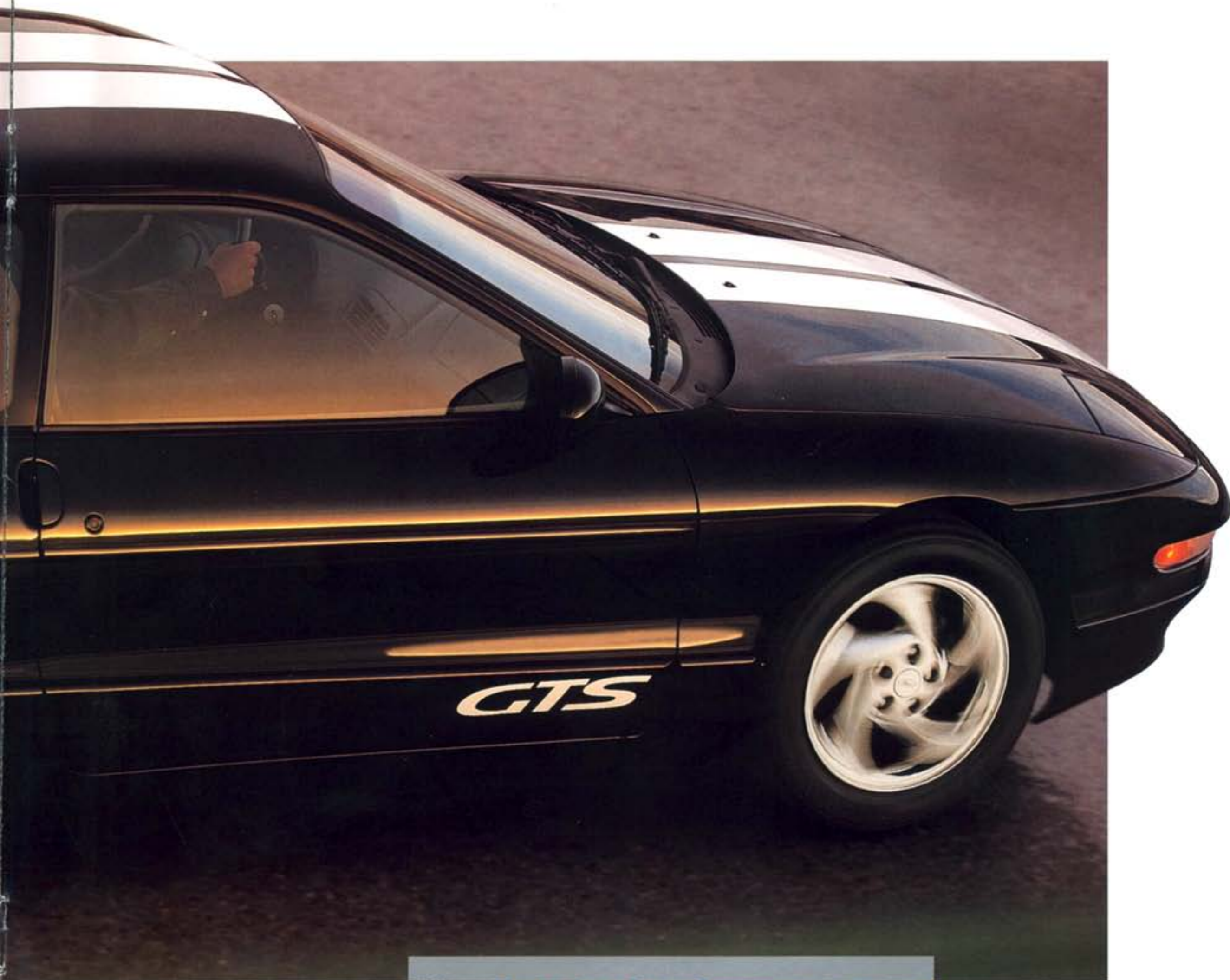
Some equipment shown  
on these pages is optional.





TAKE THE V6 POWER AND HANDLING OF THE FORD PROBE GT AND ADD THE NEW GTS  
SPORT APPEARANCE OPTION (ABOVE). IT FEATURES 16" CHROME WHEELS, TAPE STRIPES,  
SPECIAL GTS NOMENCLATURE DECALS AND A REAR SPOILER. OR TRY THE PROBE (AT RIGHT)  
WITH ITS RESPONSIVE 16-VALVE, 114-HORSEPOWER, 2.0-LITER, I4 ENGINE.

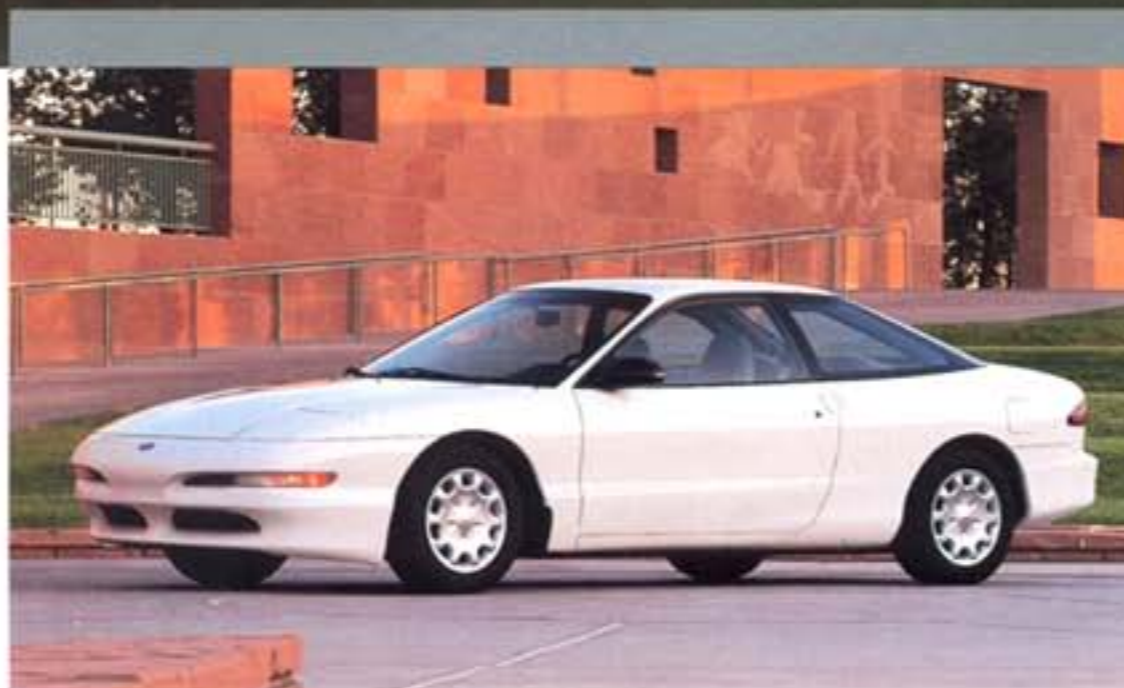
# Performs as superbly as it looks



**ABOVE: PROBE GTS**  
in Black Clearcoat.

**AT RIGHT: THE**  
**PROBE** in Vibrant White.  
It sports a responsive 16-valve,  
2.0-liter I4 engine.

Some equipment shown  
on these pages is optional.





# The Probe interior.



TO BE IN COMMAND OF THE ROAD, YOU FIRST MUST BE COMFORTABLE AT THE WHEEL.

THAT WAS THE PRINCIPLE USED TO DESIGN THE INTERIOR OF THE FORD PROBE. FIRM,

SUPPORTIVE SEATING AND ERGONOMIC INSTRUMENTS AND CONTROLS ALL HELP MAKE

# Where you're comfortably in command



**DUAL ELECTRIC REMOTE-CONTROL** mirrors, power windows and door locks are available in the Luxury Group.



**50/50 SPLIT REAR SEAT BACKS** can be lowered individually, allowing for added cargo, with or without a third passenger.



**ABOVE LEFT:** The Probe interior in Medium Graphite.

**ABOVE:** PROBE INTERIOR in Saddle with leather seating surfaces. Some equipment shown on these pages is optional.

**AT LEFT:** Analog instrumentation, including a tachometer, is standard.

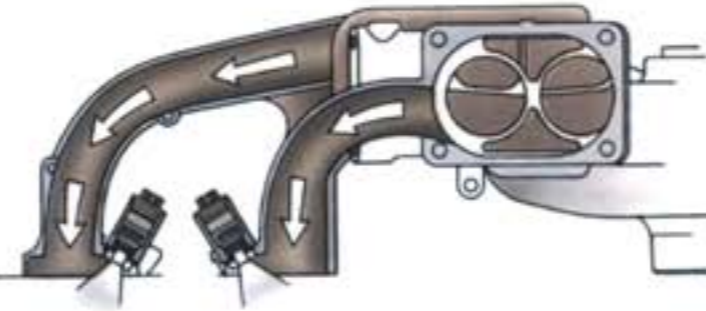


# Engineered for performance and safety



PROBE GT'S 24-VALVE, 2.5-LITER V6 has exceptional power-efficiency: a high ratio of power (164 SAE net horsepower) to displacement (153 cubic inches). That's more than one horsepower per cubic inch.

COMPUTER-CONTROLLED, MULTI-PORT ELECTRONIC FUEL INJECTION provides precise fuel metering for efficiency and smooth operation (see your Ford Dealer for 1997 EPA fuel economy estimates).

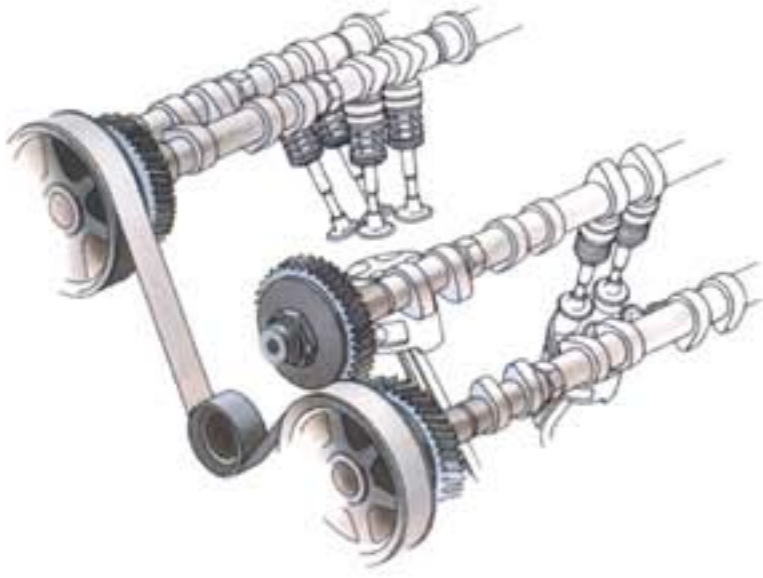


THE PROBE GT RIDES ON 16" CAST ALUMINUM WHEELS.

Its low-profile, wide-stance P225/50VR16 performance radial tires deliver tight handling capability.







**BOTH PROBE ENGINES** feature four valves per cylinder, actuated by dual overhead camshafts. This arrangement promotes greater rapid-burn combustion and higher power output.



**THE AVAILABLE REMOTE KEYLESS ENTRY SYSTEM** lets you lock or unlock your car from a distance for added security.



**AIR BAGS**, designed to supplement the safety belts, are standard equipment for both the driver and front passenger. Always wear your safety belts.



**REAR PASSENGERS** are provided with full lap/shoulder belt protection.



**INTRUSION BEAM.** As part of the overall safety design, Probe features side door intrusion beams.

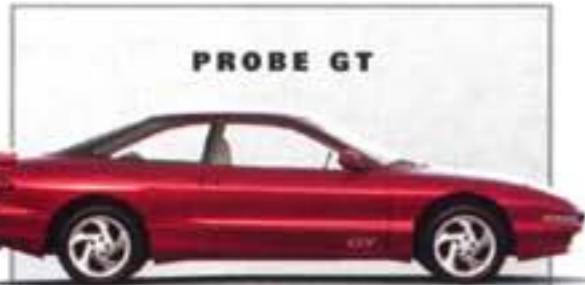
# Probe



**PROBE**

**PREFERRED EQUIPMENT PACKAGE 253A**

- Air conditioning
- Tinted glass
- Electronic AM/FM stereo/cassette/clock



**PROBE GT**

**PREFERRED EQUIPMENT PACKAGE 263A**

- Air conditioning
- Tinted glass
- Electronic AM/FM stereo/cassette/clock

**EXTERIOR FEATURES**

	<b>PROBE 253A</b>	<b>GT 263A</b>
Concealed halogen headlamps	S	S
Lower bodyside cladding	-	S
Performance front and rear fascias	S	S
Manual-adjust outside mirrors (RH direct, LH remote)	S	S
Rear decklid spoiler	O	O
Color-keyed bodyside moldings	O	O
Full-width rear taillamp with center reflector	-	S
Wheel covers and P195/65R14 BSW all-season tires	S	-
15" aluminum wheels (includes handling suspension)	O	-
16" 5-spoke directional aluminum wheels and P225/50VR16 BSW performance tires	-	S
16" 5-spoke directional chrome wheels and P225/50VR16 BSW performance tires	-	O
GTS package: 16" chrome wheels, rear spoiler, and tape stripes/GTS decals	-	O
Fog lamps	-	S

**COMFORT AND CONVENIENCE**

Convenience group: full console with storage armrest and cup holders (standard with GT), interval windshield wipers, rear washer/wiper, tilt steering column and speed control	O	O
Luxury group: power side windows (includes driver-side "express down" feature and door map pockets), power door locks, dual electric remote-control mirrors and remote keyless entry/illuminated entry	O	O
Power sliding roof (includes dome lamp/map lights)	O	O
Cargo compartment cover and light	S	S
Performance instrument cluster with tachometer, fuel gauge, water temperature gauge, oil pressure gauge, voltmeter and trip odometer	S	S
Leather-wrapped steering wheel	-	S
Leather shift knob (manual transaxle)	-	S
Center console	S	-
Full console with armrest and cup holders	-	S
Door trim panels with integral arm rests	S	S
Side window demisters	S	S
Inside liftgate/fuel door releases	S	S

Rear window defroster	O	O
Low fuel and key-in-ignition warning	S	S
Front color-keyed floor mats	O	O
Engine block heater	O	O

**AUDIO SYSTEMS**

Electronic AM/FM stereo radio, digital clock	S	S
Premium sound audio system with electronic AM/FM stereo/compact disc player/digital clock and subwoofer	O	O
Premium sound audio system with electronic AM/FM stereo/cassette player/digital clock and subwoofer	O	O

**SEATING**

Velour cloth bucket seats with integral head restraints; recliners with "memory" feature	S	-
GT velour cloth bucket seats with driver-side power lumbar support and seat back bolsters	-	S
50/50 fold-down rear seat backs	S	S
Leather seating surfaces on front bucket seats (requires 6-way power driver's seat and Luxury Group)	O	O
6-way power driver's seat	O	O

**SAFETY AND SECURITY**

Driver and front passenger supplemental air bags	S	S
Front/rear 3-point lap/shoulder safety belts; child rear seat tether anchor	S	S
Anti-lock braking system (includes 4-wheel disc brakes on Probe)	O	O

**PERFORMANCE**

2.0L DOHC 16-valve I4 (114 SAE net hp)	S	-
2.5L DOHC 24-valve V6 (164 SAE net hp)	-	S
Power front disc/rear drum brakes	S	-
Power 4-wheel disc brakes	-	S
Power rack-and-pinion steering	S	S
Performance suspension	-	S
5-speed manual transaxle	S	S
Electronic 4-speed automatic transaxle	O	O

S = Standard O = Optional



Left to right: standard wheel cover; 15" aluminum wheel; 16" 5-spoke aluminum wheel; 16" 5-spoke chrome wheel.

# Colors



Sahara Gold  
Clearcoat  
Metallic



Grey Green  
Clearcoat  
Metallic



Rio Red Tinted  
Clearcoat



Laser Red  
Tinted Clearcoat  
Metallic



Boysenberry  
Blue Clearcoat  
Metallic



Medium Alpine  
Green Clearcoat  
Metallic



Teal Mist  
Clearcoat  
Metallic



Silver Frost  
Clearcoat  
Metallic



Black  
Clearcoat



Vibrant  
White

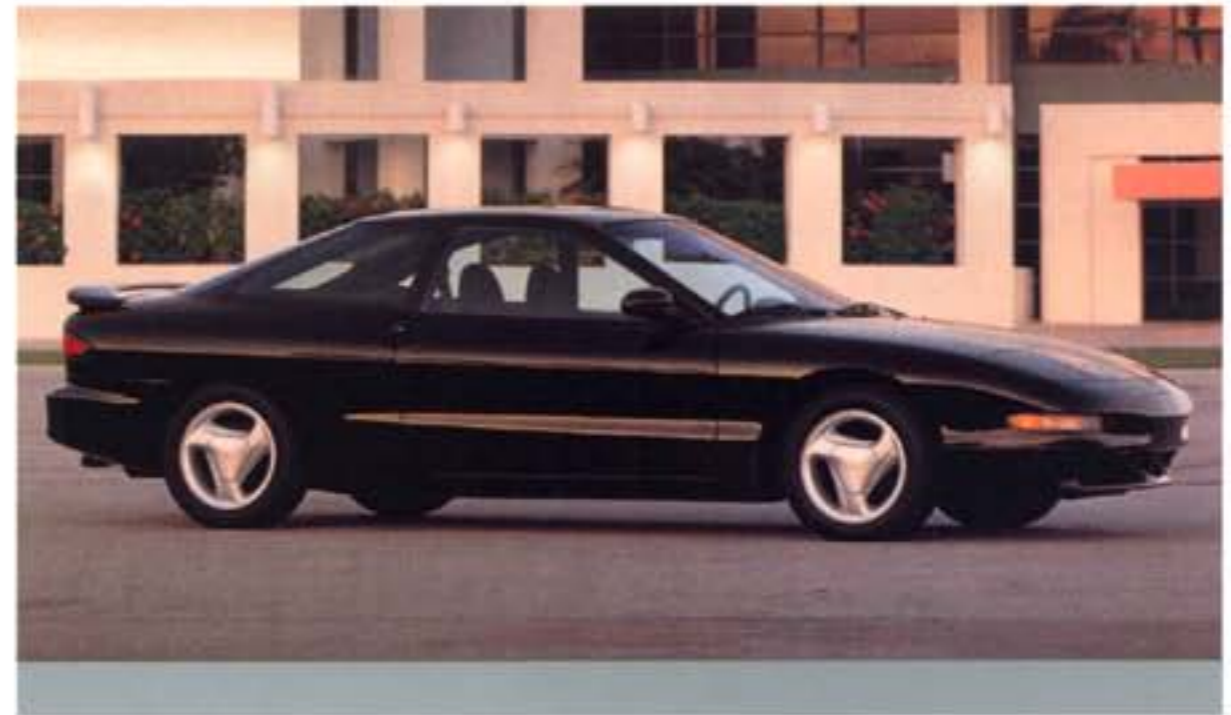
**PAINT AND TRIM COLORS**

**INTERIOR TRIM COLORS**

EXTERIOR PAINT COLORS	Willow Green	Medium Graphite	Black	Saddle
Sahara Gold Clearcoat Metallic			■	■
Grey Green Clearcoat Metallic		■	■	■
Rio Red Tinted Clearcoat		■	■	■
Laser Red Tinted Clearcoat Metallic		■	■	■
Boysenberry Blue Clearcoat Metallic		■	■	
Medium Alpine Green Clearcoat Met.	■	■	■	■
Teal Mist Clearcoat Metallic		■	■	
Silver Frost Clearcoat Metallic	■	■	■	
Black Clearcoat		■	■	■
Vibrant White	■	■	■	■

GTS decals available in either black or white. See your dealer for color compatibility.

# Ownership experience



**ROADSIDE ASSISTANCE PROGRAM.** Every new Ford includes the assurance of a 24-hour emergency Roadside Assistance Program provided during the 3-year/36,000-mile bumper-to-bumper warranty. Ask your dealer for complete details on this program which includes such services as fuel delivery, tire change, jump start, or even help when you're locked out of your car.



**FORD CREDIT** offers a wide variety of financing and leasing programs to qualified buyers which can be arranged right at the dealership. Ask your Ford Dealer for the facts on these programs.



**OPTIONAL FORD EXTENDED SERVICE PLANS** go beyond the basic 3-year/36,000-mile warranty. Ask your dealer for complete details on the optional plans and for a copy of the limited warranty.



**USING YOUR FORD CITIBANK VISA® OR MASTERCARD®** could earn you hundreds, even thousands of dollars from Ford toward the purchase or lease of a new Ford, Lincoln or Mercury product.

To apply or get more information, call 1-800-374-7777. Or visit a Ford or Lincoln-Mercury Dealer, or a branch of Citibank.

**DEALER-INSTALLED ACCESSORIES.** Your Ford Dealer offers a variety of quality Ford-brand accessories that meet or exceed our strict specifications.

**PRODUCT CHANGES AND OPTIONS AVAILABILITY.** Following publication of the catalog, certain changes in standard equipment, options, prices and the like, or product delays, may have occurred which would not be included in these pages. Your Ford Dealer is your best source for up-to-date information.

Ford Division reserves the right to change product specifications at any time without incurring obligations.

Options shown or described are available at extra cost and may be offered only in combination with other options or subject to additional ordering requirements or limitations.

For more information, visit our Web site at <http://www.ford.com>