

Elantra | warranty

*When you don't sacrifice style for substance,
you win.*



IT DOESN'T GET ANY MORE SUBSTANTIAL THAN THIS: AMERICA'S BEST WARRANTY.™*

The 2004 Hyundai Elantra is a rare breed — a stylish car you can take seriously. With America's Best Warranty, you have what we call the Hyundai Advantage,™ proof that Hyundai stands behind the quality of its products to save you money on the overall cost and maintenance of your car. And for added peace of mind, we even include 24-hour Roadside Assistance. With the Elantra's distinctive European styling and long list of standard features, it's no wonder Car and Driver says, "It satisfies on a broad list of requirements and slam-dunks the winning price." **

10 year	100,000-MILE POWERTRAIN PROTECTION
5 year	60,000-MILE BUMPER-TO-BUMPER COVERAGE
5 year	100,000-MILE ANTI-PERFORATION WARRANTY
5 year	UNLIMITED MILES 24-HOUR ROADSIDE ASSISTANCE

*See dealer for LIMITED WARRANTY details.

**Car and Driver Competitive Comparison, November 2002

Elantra | comfort



AN AM/FM/CASSETTE STEREO SYSTEM WITH FOUR SPEAKERS IS STANDARD ON THE ELANTRA GLS OR YOU CAN CHOOSE THE AVAILABLE AM/FM STEREO SYSTEM WITH CD PLAYER AND SIX SPEAKERS.



POWER WINDOWS, DOOR LOCKS AND MIRRORS ARE NICE EXTRAS THAT DON'T COST EXTRA. WE ALSO INCLUDED AN AUTO-DOWN FEATURE THAT LOWERS THE DRIVER'S WINDOW WITH JUST ONE TOUCH.

So comfortable, you can really enjoy a long stretch.

Whether you're on a long journey or a quick trip, it's easy to relax inside the 2004 Elantra. That's because we modeled the cabin on a very individual design: You. To make your driving environment fit you, rather than the other way around, we included a multi-adjustable driver's seat with lumbar support and a tilt steering column. Switches and controls are placed where you can see them at a glance. Other convenient standard features that will put you right at ease include air conditioning, power windows, door locks and mirrors, a remote keyless entry with Vehicle Security System, center console with armrest and storage compartment, front and rear cupholders and an AM/FM stereo with cassette player and four speakers. Why not be comfortable for any stretch?

 **HYUNDAI**
Win

Elantra | comfort



Elantra | safety



EVERY HYUNDAI WE BUILD INCLUDES IMPORTANT STANDARD PROTECTIVE FEATURES SUCH AS STEEL SIDE-IMPACT DOOR BEAMS AND BUILT-IN FRONT AND REAR CRUMPLE ZONES.



AN ANTI-LOCK BRAKING SYSTEM² WITH TRACTION CONTROL³ IS AVAILABLE ON ALL ELANTRA MODELS FOR ADDED CONTROL IN DIFFICULT DRIVING SITUATIONS.

THE 2004 ELANTRA FEATURES DRIVER AND FRONT PASSENGER AIRBAGS. FOR ADDED PROTECTION, FRONT SIDE-IMPACT AIRBAGS ARE ALSO STANDARD ON ALL HYUNDAI MODELS.



Go ahead and move. We've got you surrounded.

In the cabin of the 2004 Elantra, safety features are all around you, starting with a front airbag system¹ which can detect whether there is a passenger seated beside you in the front seat. In addition, the driver and front passenger are also protected by front side-impact airbags — standard on every Hyundai model. Everyone's safety is further ensured by front and rear crumple zones as well as side-impact door beams. Inside, you'll find front seatbelt pretensioners and force limiters, child-proof rear door locks and three rear child-seat tether anchors. And because the smartest thing to do is to avoid impacts altogether, the Elantra has responsive handling to make it easier for you to maneuver out of a tricky situation.

¹ The Supplemental Restraint (airbag) System (SRS) is designed to work with the 3-point seatbelt system. The SRS deploys in certain frontal and/or side-impact conditions where significant injury is likely. The SRS is not a substitute for seatbelts, which should be worn at all times. Children under the age of 13 should be restrained securely in the rear seat. NEVER place a rear-facing child seat in the front seat of a vehicle with a passenger-side airbag.

² Available as part of a specific option package. See dealer regarding availability.

³ The Traction Control System (TCS) is meant to enhance conscientious driving habits, and is not a substitute for proper driving procedures. Available as part of a specific option package. See dealer regarding availability.

Elantra style

It has that certain je ne sais quoi.



If you're looking for a car with a unique sense of style, take a close look at the Elantra. Both the 4- and 5-door models have that certain something — a distinct, European feel that sets them apart. With body-color front and rear bumpers, it would be equally at home on the streets of Paris or Portland. For 2004, the Elantra's sleek shape has been further refined, from the contemporary hood and front grille design to the distinguished rear taillights. But even though the new Elantra may look sophisticated, it is never stuffy. Jewel-like halogen headlights illuminate your nighttime drive, and body-color heated dual power mirrors help keep the rear view clear. Plus, the Elantra's exciting new palette of colors makes its profile très chic.

Elantra | features



ROAD TRIPS ARE MORE FUN WHEN YOU CAN TAKE YOUR FAVORITE TOYS ALONG. THE ELANTRA'S ADAPTABLE 60/40 SPLIT FOLD-DOWN REAR SEATBACK MAKES IT POSSIBLE TO THROW IN JUST ABOUT ANYTHING.

LET THE SUN SHINE IN OR HAVE A STAR SIGHTING WITH THE ELANTRA'S OPTIONAL POWER TILT-AND-SLIDE MOONROOF. HIGH-POWER TELESCOPE NOT INCLUDED.



THE ELANTRA'S STANDARD REMOTE KEYLESS ENTRY WITH VEHICLE SECURITY SYSTEM UNLOCKS YOUR DOORS AT THE TOUCH OF A BUTTON, OFFERING BOTH CONVENIENCE AND SECURITY.

*The sun, moon and stars can be yours.
Not to mention the occasional comet.*

The Elantra GLS comes with practically everything except your own private observatory. And even that can be yours with an available power tilt-and-slide moonroof. Among the Elantra GLS' many standard features are power windows and door locks, heated dual power mirrors and a remote keyless entry with Vehicle Security System. You'll enjoy the multi-adjustable driver's seat with lumbar support and an AM/FM/Cassette stereo system with four speakers. Or you can add an AM/FM stereo with CD player and six speakers. For those of you who choose a GT model, you'll treat your ears to a premium Kenwood CD/MP3 audio system, also with six speakers. You shouldn't have to be a star to be treated like one.

Ealnttra | technology



Isn't it nice to know there are some things in life you can control?

You can never predict what's around the next bend, but at least you'll be better prepared to handle whatever it might be with our available Anti-lock Braking System¹ with Traction Control.²

Designed to enhance driver control in severe conditions, TCS activates when it detects a loss of traction. The Elantra's fully independent suspension system with front MacPherson™ struts and gas-filled shock absorbers also helps you respond quickly to life's twists and turns. Adding yet another measure of control is the standard 5-speed manual transmission. For those who prefer to leave the shifting up to a 4-speed automatic transmission, that option is available on all models.



THE ELANTRA'S MULTI-VALVE, DOHC 4-CYLINDER ENGINE WITH CONTINUOUS VARIABLE VALVE TIMING OPTIMIZES PERFORMANCE, BUT REQUIRES MINIMAL MAINTENANCE. TALK ABOUT THE BEST OF BOTH WORLDS.



THE ELANTRA'S AVAILABLE 4-SPEED AUTOMATIC TRANSMISSION EMPLOYS COMPUTER-CONTROLLED LOGIC FOR OPTIMUM PERFORMANCE IN A VARIETY OF DRIVING CONDITIONS.

¹ Available as part of a specific option package. See dealer regarding availability.

² The Traction Control System (TCS) is meant to enhance conscientious driving habits, and is not a substitute for proper driving procedures. Available as part of a specific option package. See dealer regarding availability.

Elantra GT | style



THE GT DESIGNERS ADDED A WIND-CHEATING BODY-COLOR SPOILER TO THE ELANTRA'S ALREADY AERODYNAMIC BODY.



THESE 5-SPOKE, 15" ALLOY WHEELS, STANDARD ON THE GT, ARE PAIRED WITH MICHELIN® ALL-SEASON TIRES, GIVING THE ELANTRA A MORE AGGRESSIVE, EUROPEAN LOOK.

FORM FOLLOWS FUNCTION. THE SPORTY FRONT AIR DAM HOUSES INTEGRATED FOG LIGHTS FOR BETTER VISIBILITY AND ROAD PRESENCE DURING INCLEMENT WEATHER.



With leather trim, sport-tuned suspension and an MP3 player, maybe the GT stands for Great Thinking.

Great minds gave careful consideration to the design of the Elantra 4- and 5-door GT. The result of all this serious thinking is what you see before you today. Outside, the blacked-out grille, integrated fog lights and sleek spoiler contribute to the GTs' European style. Inside, you'll find a surprisingly luxurious cabin that includes leather seating surfaces and a premium Kenwood CD/MP3 audio system with six speakers. Then there's the way the GTs drive. Thanks to a 2.0-liter, DOHC engine with Continuous Variable Valve Timing (CVVT), these sporty cars have plenty of get up and go, and they can handle whatever the road throws at them with agile, sport-tuned suspension and steering systems. The best part? Most people think that a car with this much performance, style and luxury should cost thousands more. Think again.

 **HYUNDAI**
Win

Elantra GT | comfort



THE ELANTRA GT'S PREMIUM KENWOOD CD/MP3 AUDIO SYSTEM WITH SIX SPEAKERS AND DETACHABLE FACEPLATE LETS YOU PLAY YOUR FAVORITE MUSIC, REGARDLESS OF THE MEDIUM.

YOU'LL FIND THE CRUISE CONTROL BUTTON LOCATED RIGHT WHERE IT SHOULD BE - MOUNTED ON THE STEERING WHEEL FOR MAXIMUM CONVENIENCE.



The new GT is sounding better all the time.

The Elantra GT rocks, thanks to the standard premium Kenwood CD/MP3 audio system. This six-speaker audio system sounds great — especially from the leather-trimmed, multi-adjustable driver's seat with lumbar support. Speaking of leather, we also wrapped the steering wheel and shift knob with it for a sportier feel. To make sure the interior is as much cabin as it is cockpit, we included air conditioning, cruise control, and power windows, door locks and mirrors. And because driving is more fun when you can take along the essentials — like your snowboard or mountain bike — we included rear seats that split and fold down. If all this sounds good to you, wait until you find out what a new Elantra GT costs. It'll be music to your ears.

 **HYUNDAI**
Win

Elantra GT | performance



It can handle any curve you throw at it.

There's no telling what lies ahead. Which is why the 2004 Elantra models feature the advanced engine technology, Continuous Variable Valve Timing. CVVT optimizes your engine's efficiency in any driving situation. The Elantra's 2.0-liter DOHC engine has met its match in the GT's sport-tuned steering and suspension systems. Adding to the excitement are larger front and rear stabilizer bars. Of course, how quickly you stop is as important as how you move. Which is why the GT also comes equipped with power-assisted four-wheel disc brakes and offers an Anti-lock Braking System¹ with Traction Control.²



IN MANY CARS, A TACHOMETER IS A MERE FORMALITY. IN THE ELANTRA GT, THIS IMPORTANT INDICATOR LETS YOU GAUGE HOW MANY RPMS YOUR ENGINE IS GENERATING TO MAXIMIZE SHIFT EFFICIENCY.

TO MAKE THE MOST OF THE ELANTRA GT'S SPORTY NATURE, WE INCLUDED A 5-SPEED MANUAL TRANSMISSION FOR MAXIMUM CONTROL.



THE GT'S SPORT-TUNED SUSPENSION SYSTEM FEATURES LARGER STABILIZER BARS AND STIFFER GAS-FILLED SHOCK ABSORBERS.

¹ Available as part of a specific option package. See dealer regarding availability.

² The Traction Control System (TCS) is meant to enhance conscientious driving habits, and is not a substitute for proper driving procedures. Available as part of a specific option package. See dealer regarding availability.

Elantra | accessories

If you'd like to customize your Elantra, please see your Hyundai dealer for the full line of Hyundai accessories. You should always use genuine Hyundai parts and accessories, which meet strict standards for quality and durability.



PROTECT YOUR ELANTRA'S FINISH WITH A DURABLE, HIGH-QUALITY FRONT NOSE MASK.



SPORTS AND TRAVEL ENTHUSIASTS WILL APPRECIATE THE VERSATILE ROOF CROSS RAIL.



A CUSTOM-FITTED TRUNK CARGO NET HELPS KEEP GROCERIES AND OTHER ITEMS IN PLACE.

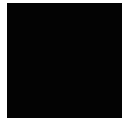
Exterior Colors



NORDIC WHITE (GLS)
(w/ BEIGE INTERIOR)



TIDAL WAVE (w/ GRAY INTERIOR)



BLACK OBSIDIAN (GLS & GT)
(w/ GRAY INTERIOR)



SEA SHELL (GLS)
(w/ BEIGE INTERIOR)



HAZELNUT (GLS)
(w/ BEIGE INTERIOR)



CRIMSON (GLS & GT)
(w/ GRAY INTERIOR)



STERLING (GLS & GT)
(w/ GRAY INTERIOR)

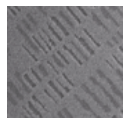


RALLY RED (w/ GRAY INTERIOR)

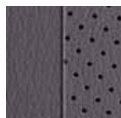
Interior Colors



GLS BEIGE



GLS GRAY



GT GRAY LEATHER

ENGINE

Type: Aluminum Alloy Inline 4-cylinder

Displacement (liters)

Horsepower @ rpm (SAE net) 132 @ 6000 (SULEV)¹ 138 @ 6000 (ULEV)²

Torque (lb.-ft. @ rpm) 133 @ 4500 (SULEV) 136 @ 4500 (ULEV)

Compression Ratio

Valve Train: 16-valve, DOHC w/Continuous Variable Valve Timing (CVVT)

Fuel System: Multi-port Programmed Fuel Injection

Ignition System: Electronic

ELANTRA GLS

S

2.0

S

S

10.3:1

S

S

S

ELANTRA GT

S

2.0

S

S

10.3:1

S

S

S

DRIVETRAIN

Type

FWD

FWD

Manual Transmission: 5-speed

S

S

Automatic Transmission: 4-speed

O

O

Final Drive Ratio (M/T/A/T)

3.65/3.77

3.65/3.77

BODY/SUSPENSION/CHASSIS

Body Type: Five Passenger Sedan

S

S

Body Construction: Unibody

S

S

Suspension-front: Independent MacPherson™ Struts w/Coil Springs

S

Sport-tuned

Suspension-rear: Independent Multi-link w/Coil Springs

S

Sport-tuned

Power-assisted Rack-and-Pinion Steering

S

Sport-tuned

Turning Diameter, Curb-to-curb (ft.)

32.5

32.5

Power-assisted Front Disc/Rear Drum Brakes

S

N/A

Power-assisted Four-wheel Disc Brakes

N/A

S

Anti-lock Braking System (ABS) w/Traction Control System

O†

O†

Wheels

15" Steel w/Full Covers

15" 5-spoke Alloy

Tires: Michelin® All-Season

P195/60R15

P195/60R15

EXTERIOR DIMENSIONS

Wheelbase (in.)

102.7

102.7

Length (in.) (4-door/5-door)

178.1/N/A

178.1/177.9

Height (in.)

56.1

56.1

Width (in.) (4-door/5-door)

67.9/N/A

67.9/67.7

Track (in., front/rear)

58.5/58.1

58.5/58.1

Curb Weight (lbs., MT/AT)

2635/2698

2635/2698

INTERIOR DIMENSIONS

Head Room (in., front/rear)

39.6/38.0

39.6/38.0

Leg Room (in., front/rear)

43.2/35.0

43.2/35.0

Shoulder Room (in., front/rear)

54.7/53.5

54.7/53.5

Hip Room (in., front/rear)

53.0/55.6

53.0/55.6

Cargo Volume (cu. ft.)

12.9

12.9

Passenger Volume (cu. ft.)

94.0

94.0

EPA MILEAGE ESTIMATES*/FUEL CAPACITY

5-speed Manual; ULEV 4-Door (City/Highway)

26/34

26/34

5-speed Manual; ULEV 5-Door (City/Highway)

N/A

27/34

4-speed Automatic; SULEV and ULEV (City/Highway)

24/32

24/32

Fuel Capacity (gal.)

14.5

14.5

S = Standard Feature O = Optional Feature P = Popular Equipment Package N/A = Not Available

*EPA estimates for comparison. Your actual mileage will vary with options, driving conditions, driving habits and vehicle's condition. Some accessories are not available on some models. While the information contained in this brochure was correct at time of printing, specifications and equipment can change. No warranty or guarantee is being extended in this brochure, and Hyundai reserves the right to change product specifications and equipment at any time without incurring obligations. Please contact your Hyundai dealer for current vehicle specifications.