



2014 Eos



Das Auto.

## Keep all your options open.

The way we see it, nothing comes close to driving a convertible. You know, that feeling of pure exhilaration when the top is down. But when the weather is less than ideal, what choice do you have? With the Eos, you'd have a lot because it's the world's only automatic folding hardtop with a power sunroof.\* So if

conditions aren't calling for the full wind-in-your-hair experience, just open the sunroof to keep that endless blue sky above you. Then, top up or down, just step on the gas and let the 200-hp turbocharged engine take you anywhere. And leave you open for anything. That's the Power of German Engineering.



Executive shown in Indium Gray Metallic



## Eos, by the numbers.

# 1

STYLE

page 05

With its bold design, the Eos has a real sense of style inside and out, top to bottom.

# 2

PERFORMANCE

page 09

A 200-hp turbocharged engine that really puts the wind in your hair when you put the pedal to the metal.

# 3

INTERIOR

page 11

Surprisingly roomy and spacious, this convertible seats four adults comfortably.

# 4

TECHNOLOGY

page 13

With a touchscreen and 8-speaker sound system, it's an entertainment center that totally revolves around you.

# 5

SAFETY

page 15

You'll find numerous safety measures, both active and passive, that will help provide immeasurable safety.

# 6

SPECS & ACCESSORIES

page 19

Colors. Trims. Wheels. All the things that make an Eos your Eos.

# The sky. Without limits.

## STYLE

With its stunning looks and impressive German engineering, there's no telling what you can do in your Eos. Show off those curves on a long straightaway. Turn heads at nearly every turn. Or just get your daily dose of Vitamin D. Really, it can go wherever the sky takes you.

---

5-piece folding hardtop design

---

Power tilting/sliding panoramic sunroof

---

18" alloy wheels\*

---

Bi-Xenon headlights with LED Daytime Running Lights\*

---

LED taillights



Komfort shown in Reflex Silver Metallic

# Top form.

## STYLE

A simple pull of a lever transforms the Eos from a coupe to a convertible in just 25 seconds for a quick change of scenery. So one moment the Eos is a gorgeous coupe with stunning lines. In the very next, it's an equally gorgeous convertible looking for the next stunning sunset.

Seen in all the right places. With LED taillights, LED lighting for the license plate, and foglights with a corner-illuminating feature, you definitely have a lot to look forward to.



**01** **Shining example.** Available Bi-Xenon headlights with the Adaptive Front-lighting System show off more of the road at night. And let you show off one of our coolest features.



**02** **Ah, leather.** The seats of the Eos are available with Vienna leather seating surfaces that are soft to the touch. Plus, they really do make that new car smell even better.



**03** **How's the view?** Simply beautiful with available power-folding side mirrors that have integrated turn signals, are heated, and can even dim automatically on the driver's side to help reduce headlight glare.



# 200 horsepower

## PERFORMANCE

**Fun worshipper.** When it comes to a good time, the Eos is ready to soak it all in. Look past those sleek lines and you'll see a 2.0L, 200-hp turbocharged engine underneath the hood that's ready to take on any highway, expressway, or long way home. Paired with the 6-speed DSG<sup>®</sup> automatic transmission with Tiptronic<sup>®</sup>, you can switch from fully automatic to manual shifting with just a simple tap. This means getting there is always twice the fun.

200-hp turbocharged engine

6-speed DSG automatic transmission with Tiptronic and Sport mode

Sport-tuned suspension\*

Electromechanical Power Steering (EPS)

Steering wheel-mounted paddle shifters\*



Executive shown in Salsa Red



**01 2.0L TSI<sup>®</sup> engine.** That wind in your hair doesn't just come out of nowhere. A lot of credit goes to the 207 lbs/ft of torque from a turbocharged engine designed to blow you away.



**02 Turbo.** That distinct whoosh you hear when you step on the gas is the turbocharger kicking in, pushing more air into the engine for a quick boost of power. And an even quicker rush of adrenaline.

\*Feature available on select models.



Executive shown in Cornsilk Beige Leather

## Roomy with a view.

### INTERIOR

Even when you're inside with the top up, you'll never leave the outside far behind. Open the panoramic sunroof to let all of that breathtaking sky in. Get nice and comfortable in the available 12-way power-adjustable front seats. Then turn on the dual-zone automatic climate control to maintain the perfect temperature for everyone. It's nice to know the Eos is always looking out for you.

Leather-wrapped, multi-function steering wheel

Heated front seats

Power easy-entry front seats\*

V-TEX leatherette seating surfaces

Removable wind deflector

Keyless access with push-button start\*

12-way power-adjustable front seats\*

Dual-zone automatic climate control



\*Feature available on select models.



Executive shown in Black Oak Brown Metallic with Cornsilk Beige leather

## Open seating.

### TECHNOLOGY

Go ahead and take any seat you like. Because no matter where you're sitting in the Eos, you're in the perfect position to take in the available crystal-clear HD Radio™ or your favorite iPod® playlist pumping out of 10 available premium speakers. Of course, if it's just you, call up some friends with the push of a button and a voice command to tell them you have some great seats for the next performance.\*\*



- 600-watt Dynaudio® premium sound system\*
- Touchscreen navigation
- Bluetooth® with audio streaming\*\*
- Media Device Interface (MDI) with iPod cable\*\*
- Rearview camera\*
- Park Distance Control\*
- Volkswagen Car-Net™ connected car features†
- SiriusXM® Satellite Radio with 3-month trial subscription



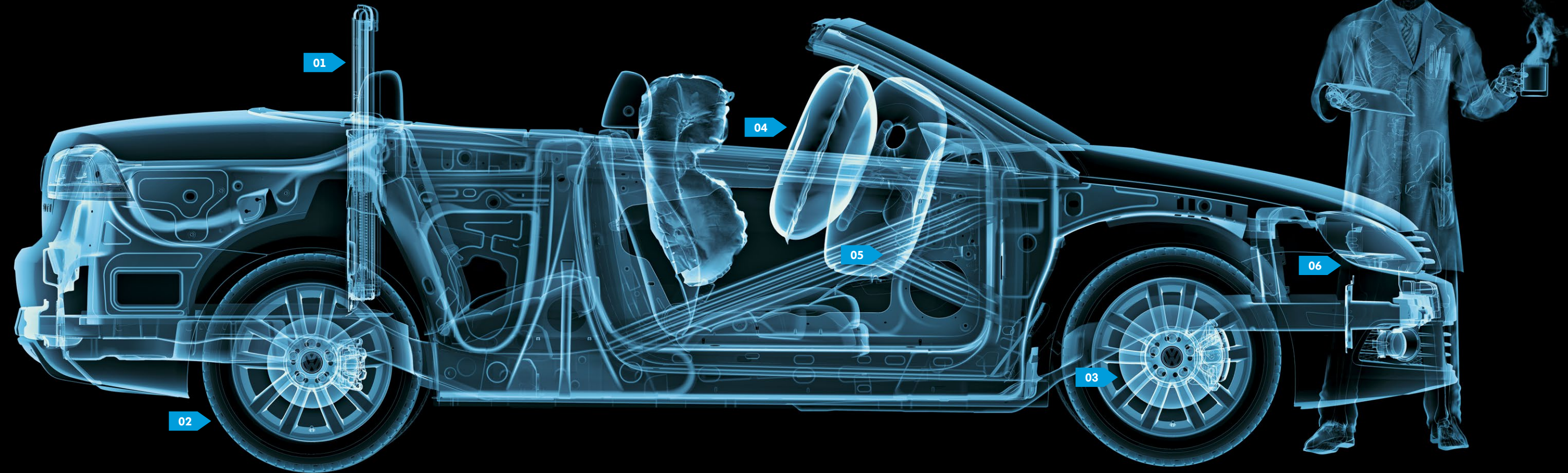
\*Feature available on select models. \*\*Requires compatible devices. †VW Car-Net services provided by Verizon Telematics, Inc. (VZI). Available only on select 2014 Volkswagen models. Automatic Crash Notification may be enabled for up to six months without activating a trial or paid subscription; Manual Emergency Call feature and all other VW Car-Net features require trial or paid subscription. ‡VW Car-Net services require vehicle cellular connectivity and availability of vehicle GPS signal. VW Car-Net includes services that may collect location information. See applicable Terms of Service available at vw.com/carnet for details.



# Safety that's easily transparent.

## SAFETY

Beneath that attractive Eos exterior, you'll find even more attractive features designed to help keep you safe. Numerous active safety features, such as Electronic Stability Control (ESC) and Hydraulic Brake Assist (HBA) systems, help reduce the likelihood of an accident occurring in the first place. And should the unthinkable become unavoidable, we've implemented multiple passive safety systems to do our very best to help protect you and your passengers, including adaptive airbags that can vary their operation based on crash severity.\* The Eos even looks out for you after a crash with its Intelligent Crash Response System (ICRS).\*\* With everything the Eos does to help protect you, it has a focus on safety that's clear to see.



**01 Rollover support.** Every Eos is equipped with a rollover support system that automatically deploys hidden steel beams behind the rear head restraints. It helps provide additional protection in rollovers, for additional peace of mind.

**02 Tire Pressure Monitoring System (TPMS).** The TPMS lets you know when the pressure of one of your tires is low, which can help improve overall safety, tire life, handling, and even fuel economy.†† Good reasons why the Eos tirelessly monitors your tire pressure.

**03 Seven active stability-enhancing systems.** The Eos features seven active stability systems to help enhance control when accelerating, braking, and while cruising. And it can help enhance your sense of confidence on the road as well.

**04 Adaptive airbags.** For enhanced protection, the front airbags can tailor their operation based on crash severity and even the weight of the occupants. And pressure sensors within the doors help accelerate the side airbags' response time in side impacts. All to provide an extra cushion of safety.\*

**05 Safety cage.** Front and rear crumple zones help absorb crash energy, while a rigid safety cage helps deflect it away from the occupant compartment. Hot-formed anti-intrusion side beams and A-pillars help prove the Eos not only has your back, but your sides too.

**06 Intelligent Crash Response System (ICRS).** In the event of a collision that activates the vehicle's airbags,\* the ICRS will automatically disable the fuel pump, unlock all the doors, and turn on the hazard lights.\*\* It's how your Volkswagen looks out for you when you need it most.

Dramatization.†

\*Airbags are supplemental restraints only and will not deploy under all crash circumstances. Always use safety belts and seat children only in the rear, using restraint systems appropriate for their size and age. \*\*The Intelligent Crash Response System (ICRS) will only activate in a collision where the airbags deploy or safety belt pretensioners activate. Not all collisions cause airbags to deploy or safety belt pretensioners to activate. †This is a dramatization and does not depict what will happen in a collision. All airbags will not inflate in real-world crashes, and if multiple airbags do deploy, they will be in various stages of inflating/deflating and will never all be inflated at the same time. ††See [www.fueleconomy.gov](http://www.fueleconomy.gov) for EPA estimates. Your mileage will vary and depends on several factors, including your driving habits and vehicle condition.

# Our environment.

Building cars comes with responsibilities—not just to you, but to the environment. And this starts before our cars are even built, like at our LEED® Platinum-certified plant in Chattanooga. It follows our “Think Blue. Factory.” philosophy by taking a holistic approach to our ecological activities. Our goal is to reduce the environmental impacts from the Volkswagen brand’s production operations by 25% per vehicle by 2018 by improving resource efficiency and reducing emissions. As you can see, this sort of thinking really does come second nature to us. **Think beyond green. Think Blue.**

## Our commitment to the environment

Encouraging eco-conscious behavior

The first LEED Platinum auto plant

Partnering with other progressive thinkers like MoMA, the Surfrider Foundation, and PeopleForBikes



# Your enjoyment.

Driving a fuel-efficient\* vehicle shouldn’t mean sacrificing performance. There are just too many fun, curvy roads out there, which is why Volkswagen makes a variety of fun-to-drive engines, including a high-range TDI® Clean Diesel engine with enough grin-inducing torque to pin you back in your seat. Our TSI® engine uses direct injection to be both powerful and efficient, and our Jetta Hybrid sports a turbocharger under its hood, which is the first of its kind in its class. Who knows, this could account for all the happy VW drivers out there. Quite honestly, nothing would make us happier.

## Our commitment to your driving enjoyment

TDI technology uses less fuel and provides more torque than comparable gas engines\*

TSI engines use turbocharging and direct injection to be more powerful and efficient\*

The 48 highway mpg Jetta Hybrid is the first turbocharged hybrid in its class\*\*

**Think Blue.®**

\*See [www.fueleconomy.gov](http://www.fueleconomy.gov) for EPA estimates. Your mileage will vary and depends on several factors including your driving habits and vehicle condition.  
\*\*2013 Jetta Hybrid, 7-speed DSG transmission: 48 highway/42 city/45 combined mpg EPA estimates. Your mileage will vary and depends on several factors including your driving habits and vehicle condition. Model year 2014 EPA estimates not available at time of printing.

# Trims & Specs



## Komfort

### Komfort

Includes: 2.0L, 200-hp TSI® engine; 6-speed DSG® automatic transmission with Tiptronic® and Sport mode; 17" Michigan alloy wheels with all-season tires; power retracting hardtop roof; power panoramic sunroof (tilting/sliding with manual sunshade); front foglights with corner-illuminating feature; LED license plate lighting; heated washer nozzles; Climatronic® dual-zone automatic climate control; Bluetooth® with audio streaming;\* Volkswagen Car-Net™ connected car features;\*\* RNS 315 navigation system with 5" color touchscreen and SD memory card reader; AUX-in for portable audio players, and SiriusXM® Satellite Radio with 3-month trial subscription; Media Device Interface (MDI) with iPod® cable;\* V-Tex leatherette seating surfaces; 12-way power-adjustable driver's seat with power-adjustable lumbar support; 8-way manually adjustable passenger seat including manually adjustable lumbar support; easy-entry access to rear seating (power driver and manual passenger); heated front seats; non-folding pass-through rear seats with lockable storage; leather-wrapped, multi-function steering wheel, shift knob, and brake handle; Matte Chromium interior trim.

## Sport

### Sport

Includes Komfort features, plus: 18" Vicenza alloy wheels with all-season tires; sport suspension; black painted exterior mirrors; Bi-Xenon high-intensity headlights with LED Daytime Running Lights (DRL) and Adaptive Front-lighting System (AFS); headlight washer system; rear spoiler; keyless access with push-button start; steering wheel-mounted paddle shifters; Brushed Aluminum appearance pedal covers; Black Peak interior trim.

## Executive

### Executive

Includes Komfort features, plus: 18" Kansas alloy wheels with all-season tires; sport suspension; Bi-Xenon high-intensity headlights with LED Daytime Running Lights (DRL) and Adaptive Front-lighting System (AFS); headlight washer system; automatic headlights with Coming/Leaving Home feature; Park Distance Control (PDC) with rear proximity sensors and Trunk Lid Assistant; rain-sensing wipers; power-operated, folding, heated side mirrors with integrated turn signals and auto-dimming driver's side mirror; RNS 510 navigation system with 6.5" color touchscreen in center console, HD Radio,™ SiriusXM Traffic™ with 4-year subscription, SiriusXM Travel Link™ with 3-month trial subscription, SD memory card reader, and 30GB hard disk; Dynaudio® premium sound system; rearview camera; leather seating surfaces; 12-way power-adjustable front passenger seat with power-adjustable lumbar support; power easy-entry access to rear seating; keyless access with push-button start; self-dimming interior rearview mirror.

Design	Komfort	Sport	Exec
Halogen headlights with clear, lightweight, chip-resistant polycarbonate lenses and Daytime Running Lights (DRL)	●	–	–
LED technology for rear marker, brake, and turn signal lights	●	●	●
Bi-Xenon high-intensity headlights with LED Daytime Running Lights (DRL) and Adaptive Front-lighting System (AFS)	–	●	●
Halogen reflector lens foglights with corner-illuminating feature	●	●	●
Power-operated, folding, heated side mirrors with integrated turn signals	●	●	–
Power-operated, folding, heated side mirrors with integrated turn signals and auto-dimming driver's side mirror	–	–	●
Power tilting/sliding panoramic sunroof, with tinted glass and manual sunshade	●	●	●
CSC (Coupe-Sunroof-Convertible) automatic, multi-piece folding hardtop roof with heated rear glass window	●	●	●
17" alloy wheels	●	–	–
18" alloy wheels	–	●	●
Heated front windshield washer nozzles	●	●	●

Interior	Komfort	Sport	Exec
Climatronic dual-zone automatic climate control with pollen filter	●	●	●
Electric rear window defroster	●	●	●
Multi-function trip computer with trip time, trip length, average trip speed, average trip fuel consumption, current fuel consumption, miles to empty, radio station display, personalizing function	●	●	●
2 remote key fobs with lock, unlock, trunk release, and panic button	●	●	●
2 12V power outlets: 1 in front center console, 1 in rear	●	●	●
Driver and passenger vanity mirrors, illuminated and with covers	●	●	●
12-way power-adjustable driver's comfort seat, including 4-way power-adjustable lumbar support; 8-way manually adjustable passenger seat including manual lumbar adjustment	●	●	–
12-way power-adjustable driver and passenger comfort seats, including 4-way power-adjustable lumbar support	–	–	●
Brushed Aluminum appearance pedal covers	–	●	–
Easy-entry front seats, power driver's seat adjustment	●	●	–
Power easy-entry driver and front passenger seats	–	–	●
Heated front seats	●	●	●
Rear center pass-through armrest, foldable and lockable, with storage compartment	●	●	●
3-spoke, leather-wrapped, multi-function steering wheel	●	●	●
V-Tex leatherette seating surfaces	●	●	–
Matte Chromium interior trim	●	–	–
Black Peak interior trim	–	●	○
Engineered Ebony interior trim	–	–	○
Leather seating surfaces	–	–	●
Power windows with pinch protection; front windows with automatic 1-touch feature, operable from driver's side only	●	●	●

Technology	Komfort	Sport	Exec
Volkswagen Car-Net™ connected car features**	●	●	●
RNS 315 navigation system with 5" color touchscreen and SD memory card reader	●	●	–
RNS 510 navigation system with 6.5" color touchscreen in center console, HD Radio, SiriusXM Traffic with 4-year subscription, SiriusXM Travel Link with 3-month trial subscription, SD memory card reader, and 30GB hard disk	–	–	●
Dynaudio premium sound system, with 10 high-end speakers (4 tweeters, 2 midrange, 4 woofers), 600-watt amplifier and DSP (Digital Signal Processor) technology	–	–	●
SiriusXM® Satellite Radio with 3-month trial subscription	●	●	●
AUX-in for portable audio players	●	●	●

Technology cont.	Komfort	Sport	Exec
Media Device Interface (MDI) with iPod cable*	●	●	●
Bluetooth with audio streaming*	●	●	●
Keyless access with push-button start	–	●	●

Performance	Komfort	Sport	Exec
2.0L TSI, 16-valve, DOHC, in-line 4-cylinder turbocharged engine with intercooler and direct fuel injection (FSI®); 200 hp, 207 lbs/ft of torque	●	●	●
6-speed DSG automatic transmission with Tiptronic and Sport mode	●	●	●
Power-assisted front vented disc brakes and rear solid disc brakes	●	●	●
Electromechanical power steering with variable assistance and active return	●	●	●
Independent front MacPherson struts and rear independent 4-link suspension	●	●	●
Sport suspension	–	●	●

Safety	Komfort	Sport	Exec
Anti-theft alarm system for doors, hood, trunk, and radio with audible and visual activation with Immobilizer III theft-deterrent system	●	●	●
Driver and passenger front airbag supplemental restraint system; includes Passenger Occupant Detection System (PODS)	●	●	●
Driver and front passenger head/thorax side airbag supplemental restraint system†	●	●	●
3-point safety belts for all seating positions, with safety belt pretensioners for front seats†	●	●	●
Automatic Rollover Support System behind rear head restraints	●	●	●
LATCH (Lower Anchors and Tethers for Children) child seat anchor points	●	●	●
Electronic Stability Control (ESC), Anti-Slip Regulation (ASR), Electronic Differential Lock (EDL), and Engine Braking Assist (EBA)	●	●	●
Anti-lock Braking System (ABS), Electronic Brake-pressure Distribution (EBD), and Hydraulic Brake Assist (HBA)	●	●	●
Intelligent Crash Response System (ICRS)††	●	●	●
Tire Pressure Monitoring System (TPMS)	●	●	●

Quality	Komfort	Sport	Exec
12-year/unlimited mileage Limited Warranty Against Corrosion Perforation‡	●	●	●
5-year/60,000-mile (whichever occurs first) Powertrain Limited Warranty‡	●	●	●
3-year/36,000-mile (whichever occurs first) New Vehicle Limited Warranty‡	●	●	●
3-year/36,000-mile (whichever occurs first) Roadside Assistance††	●	●	●

Dimensions	
Wheelbase	101.5 inches (2,578 mm)
Front track	60.8 inches (1,545 mm)
Rear track	60.9 inches (1,547 mm)
Length	174.1 inches (4,422 mm)
Width	70.5 inches (1,791 mm)
Height	56.8 inches (1,443 mm)
Cargo volume (with top raised)	10.5 cu. ft. (0.29 cu. m)
Cargo volume (with top stowed)	6.6 cu. ft. (0.18 cu. m)

● Standard, at no additional cost

○ Optional, additional cost

– Not Available

\*Requires compatible devices. \*\*VW Car-Net services provided by Verizon Telematics, Inc. (VZI). Available only on select 2014 Volkswagen models. Automatic Crash Notification may be enabled for up to six months without activating a trial or paid subscription; Manual Emergency Call feature and all other VW Car-Net features require trial or paid subscription. VW Car-Net services require vehicle cellular connectivity and availability of vehicle GPS signal. VW Car-Net includes services that may collect location information. See applicable Terms of Service available at vw.com/car-net for details. †Airbags are supplemental restraints only and will not deploy under all crash circumstances. Always use safety belts and seat children only in the rear, using restraint systems appropriate for their size and age. ††The Intelligent Crash Response System (ICRS) will only activate in a collision where the airbags deploy or safety belt pretensioners activate. Not all collisions cause airbags to deploy or safety belt pretensioners to activate. ‡See dealer or warranty booklet for details; some restrictions apply. †††Roadside Assistance provided by Signature Motor Club, Inc., and Signature Motor Club of California, Inc.

## Eos Accessories



Pedal Caps



Rear Lip Spoiler



Splash Guards



Trunk Liner



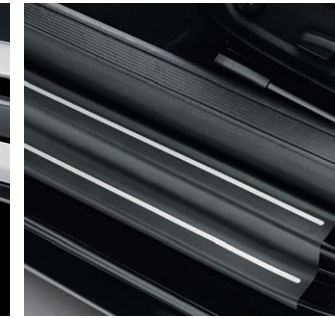
MojoMat®



Monster Mat®



Chrome Look Rear Accent Strip



Door Sill Protection



Valve Stem Caps



Locking Wheel Bolts



SunShield\*



18" Velos Wheel

To see more cool stuff for you and your Volkswagen, visit [DriverGear.VW.com](http://DriverGear.VW.com) or see your Consultant.

## Standard Wheels



Komfort 17" Michigan

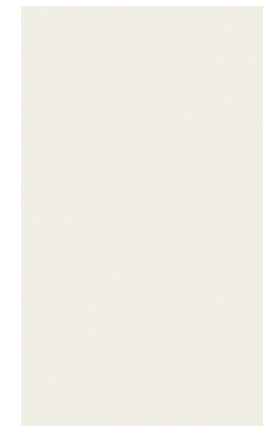


Sport 18" Vicenza



Executive 18" Kansas

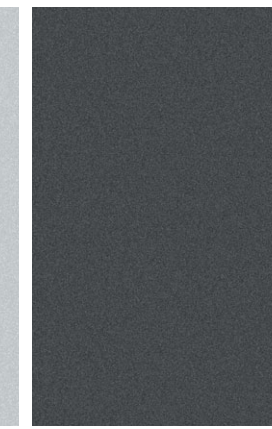
# 7 exterior paint choices.



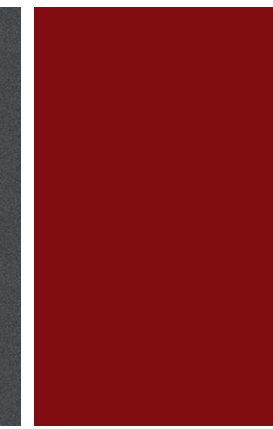
Candy White



Reflex Silver Metallic



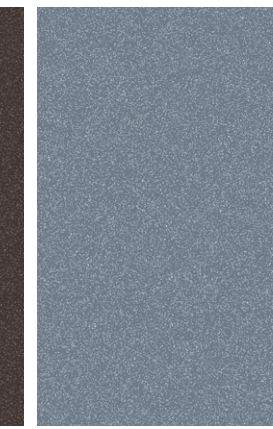
Indium Gray Metallic



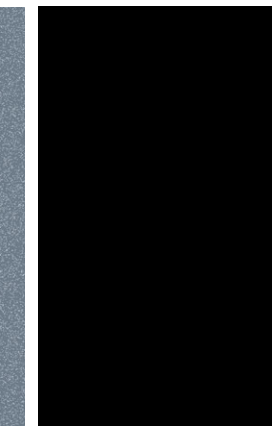
Salsa Red



Black Oak Brown Metallic



Horizon Blue Metallic

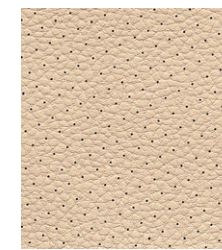


Deep Black Pearl

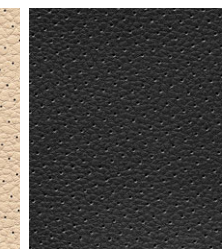
## Interior

V-TEX LEATHERETTE

LEATHER



Cornsilk Beige



Titan Black



Cornsilk Beige



Titan Black



Atlantic Blue



Red



Das Auto.



Beetle



Passat



Golf



GTI



Jetta



CC



Eos



Tiguan



Jetta SportWagen



Touareg

# 10 models to choose from.

VOLKSWAGEN FAMILY

**Why VW.** It's not a question. It's our philosophy behind why we think everyone deserves a better car. No matter where they are or where they're headed, people should have a quality car they can feel good about and enjoy for a long time. Today, we have ten different models

to choose from—all engineered with this same belief. And it's why we have the most vehicles on the road with over 100,000 miles.\* Because Why VW is all about making sure that the VW you have today will still be the one you love to love tomorrow.

vw.com

©2013 Volkswagen of America, Inc. Printed in USA. Volkswagen of America, Inc., believes the information and specifications in this brochure to be correct at the time of printing. Specifications, standard features, options, fabrics, and colors are subject to change without notice. Some features may be unavailable when your vehicle is built. Some vehicles are pictured with options that may be available at extra cost or may not be available on some models. Ask your dealer about the availability of options and verify that the vehicle you ordered includes the equipment you ordered. Tires are supplied and warranted by their manufacturer. "Volkswagen," the Volkswagen logo, "Das Auto," "Eos," "DSG," and "TSI" are registered trademarks of Volkswagen AG. "Climatronic," "Car-Net," "MojoMat," and "Monster Mat" are registered trademarks of Volkswagen Group of America, Inc. "Tiptronic" is a registered trademark of Dr. Ing. h.c. F. Porsche AG. "iPod" is a registered trademark of Apple Inc. All rights reserved. iPod is not included. "Bluetooth" is a registered trademark of Bluetooth SIG, Inc. "Dynaudio" is a registered trademark of Continental Audio Electronic GMBH. SiriusXM Satellite Radio, SiriusXM Traffic, and SiriusXM Travel Link subscriptions are sold separately or as a package after trial period and are continuous until you call SiriusXM at 1-866-635-2349 to cancel. See Customer Agreement for complete terms and more information at [www.siriusxm.com](http://www.siriusxm.com). ©2013 Sirius XM Radio Inc. Sirius, XM, and all related marks and logos are trademarks of Sirius XM Radio Inc. Volkswagen DVD navigation depends on the signals from the worldwide Global Positioning Satellite network. The vehicle's electrical system, and existing wireless and satellite technologies, must be available and operating properly for the system to function. The system is designed to provide you with suggested routes to location addresses, destinations, and other points of interest. Changes in street names, construction zones, traffic flow, points of interest, and other road system changes are beyond the control of Volkswagen of America, Inc. Complete detailed mapping of lanes, roads, streets, toll roads, highways, etc., is not possible, therefore you may encounter discrepancies between the mapping and your actual location. Please rely on your individual judgment in determining whether or not to follow a suggested navigation route. Periodically, the mapping is updated and a new DVD will be required in order to maintain the latest navigation information available to us. These will be available for purchase from time to time at additional cost. For further information regarding any Volkswagen model, please call 1-800-DRIVE-VW or just look us up at [vw.com](http://vw.com). VW14EOSBUS

\*Average mileage based on Wolfram Alpha data ([www.wolframalpha.com](http://www.wolframalpha.com)). Vehicles on the road based on Polk global registrations of 2001 models and older in 48 countries, as of September 2012.