

CHRYSLER 300
2019



A CULTURAL REVOLUTION

OF CLASSIC DESIGN & PERFORMANCE



300S AWD SHOWN IN SILVER MIST

MOST TECHNOLOGICALLY
ADVANCED ALL-WHEEL-DRIVE
SYSTEM IN ITS CLASS^{1*}

CANADA'S BEST-SELLING ENGINE² —
THE STANDARD 3.6L PENTASTAR™
VVT V6

IMPRESSIVE 363 HORSEPOWER —
THE AVAILABLE 5.7L HEMI®
VVT V8 ENGINE

ENDURING ELOQUENCE AND PERFORMANCE

Providing advanced connectivity and safety technologies confirms this icon is built for a modern lifestyle. It assures a perfect balance of power, efficiency and convenience to the lasting beauty of the classic, bold shape and dynamic performance even standing still. Premium engineering offers the most technologically advanced all-wheel-drive (AWD) system in its class,¹ available on all V6 models, along with Best-in-Class³ AWD fuel efficiency.[†]

THE FORMULA FOR FIRST PLACE

Known widely for its commanding characteristics, the Chrysler 300 is ready to perform with Canada's Best-Selling Engine², the standard 3.6L Pentastar Variable Valve Timing (VVT) V6, and Class-Exclusive¹ TorqueFlite® 8-speed automatic transmission. Furthermore, the available 5.7L HEMI VVT V8 offers surprising power with the efficiency of a much smaller engine thanks to its FuelSaver Multi-Displacement System.

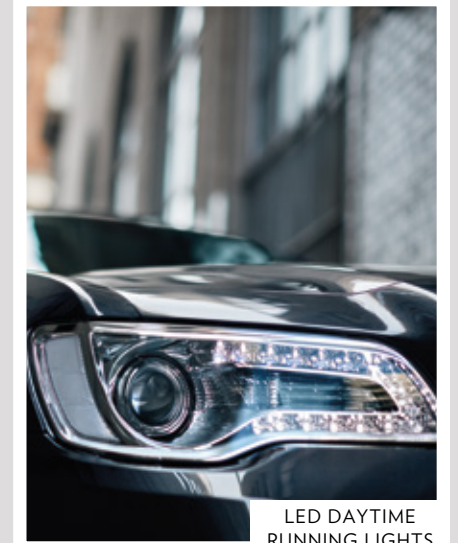
[†]All disclaimers and disclosures can be found on the back cover. [†]Based on 2018 *EnerGuide* ratings.



AWARD-WINNING CRAFTSMANSHIP



ROTARY E-SHIFT



LED DAYTIME
RUNNING LIGHTS



STANDARD 8.4-INCH TOUCHSCREEN



BEST-IN-CLASS³ V6 FUEL ECONOMY[†]



300C WITH QUILTED LEATHER INTERIOR



300C GRILLE WITH CHROME SURROUND

Apple CarPlay shown above on touchscreens.

THE MOST LUXURIOUS VEHICLE IN ITS CLASS⁴



300C IN PREMIUM INDIGO/LINEN NAPPA LEATHER



300C QUILTED DOOR BOLSTERS



EXCLUSIVE QUARTERS

The Award-Winning 300C is a study in exquisite interior craftsmanship. Drivers and passengers will settle into the comfort of premium quilted Nappa leather-faced seats, heated and ventilated front seats and heated rear seats. The rich interior's matte-finish Mocha real-wood accents offer visual warmth to the luxurious craftsmanship.

A heated two-tone leather-wrapped steering wheel fits your grip like a custom glove. Adorning touchpoints with an available leather-wrapped dash, door bolsters and centre console, along with the ultimate convenience of Class-Exclusive¹ heated and cooled front cup holders, make your cabin experience first-rate every time.



300C INTERIOR WITH REAL-WOOD TRIM AND AVAILABLE LEATHER-WRAPPED DASH

Apple CarPlay shown on touchscreen above.

WORLD-CLASS COMFORT

Whether sharing your commute, making 300 a family car or bringing friends on excursions, the Best-in-Class¹ passenger volume with seating for five gives drivers and passengers plenty of space of their own. Front seats are available heated and ventilated for premium comfort. Rear-seat occupants will enjoy amenities like climate control outlets and available heated seats, as well as access to USB ports and ergonomically designed seats. The 60/40 split-folding rear bench seat offers versatility for travel and those weekend shopping hauls.

AUTOMATIC CONVENIENCE

The available Remote Start System allows the driver's heated seat and the heated steering wheel to automatically activate based on outdoor temperature. Driver conveniences, like standard Keyless Enter 'n GoTM with proximity entry and push-button start and the smooth, automatic gear selection of the Class-Exclusive¹ electronic Rotary E-shift, are nearly effortless.



300C HEATED/COOLED CUP HOLDERS

BEST-IN-CLASS³

AWD FUEL EFFICIENCY – 8.7 L/100 KM HWY*



300S SHOWN IN VELVET RED PEARL

CANADA'S BEST-SELLING ENGINE²

The standard 3.6L Pentastar™ VVT V6 yields a Best-in-Class³ V6 rear-wheel-drive (RWD) fuel efficiency rating of 7.8 L/100 km (36 mpg) highway* while producing a robust 292 hp and 260 lb-ft of torque (300 hp and 264 lb-ft on 300S). All-wheel-drive (AWD) models benefit from an active transfer case with front-axle disconnect, helping to make it the most technologically advanced AWD system in its class.¹ Achieving a Best-in-Class³ AWD fuel efficiency rating of 8.7 L/100 km (32 mpg) highway*, the system seamlessly transfers from RWD to AWD as needed, returning to RWD when driving conditions warrant to maximize fuel economy.

LEGENDARY 5.7L HEMI® VVT V8 WITH FUELSAVER MULTI-DISPLACEMENT SYSTEM (MDS)

Canada's Best-Selling V8 Engine,⁵ the available 5.7L HEMI VVT V8 with FuelSaver MDS, delivers an impressive combination of V8 horsepower and a remarkable fuel efficiency rating of 9.4 L/100 km (30 mpg) highway*. The engine is optimized by the Class-Exclusive¹ TorqueFlite® 8-speed automatic transmission. FuelSaver MDS technology seamlessly alternates between four-cylinder mode – when less power is needed – and all eight cylinders when required. The result with all 8 cylinders activated is acceleration that meets your demands with 363 hp and a surprising punch of 394 lb-ft of torque.

*Based on 2018 *EnerGuide* ratings. See page 19 for full details.



THE SPORT OF DRIVING

Sport mode amplifies the ride and handling experience on 300S and 300C models by selecting the S gear on the Rotary E-shift dial. It enables more aggressive engine and transmission response, increased accelerator-pedal engagement, manual shifting controlled by the steering wheel-mounted paddle shifters, and Sport-tuned Electric Power Steering (EPS) for enhanced handling. Sport mode can also be activated by the Sport button on the centre stack.

OPEN AND AIRY

An available dual-pane panoramic sunroof, which extends to the backseat, offers a skylight vibe, while the available power backlight sunshade blocks any unwanted direct sunlight from overhead.

CLASS-EXCLUSIVE¹ TORQUEFLITE® 8-SPEED AUTOMATIC TRANSMISSION

The standard TorqueFlite 8-speed automatic transmission provides World-Class shift quality, outstanding fuel efficiency and commanding performance thanks to a wide gear-ratio spread. A low first gear ensures quick takeoff, while close fifth- through eighth-gear ratios deliver smooth shifting and a lower cruising RPM for refined performance and optimal fuel economy.



300S SHOWN IN BRIGHT WHITE

300S
*A STATEMENT
TO LIVE BY*



BLACK NAPPA LEATHER-FACED "S" SPORT SEATS

SCENE-MAKER

Black or Black/Smoke two-tone Nappa leather-faced performance seats contrasted with Light Diesel stitching are the marquee of the 300S interior style. The leather-wrapped steering wheel with paddle shifters and accent stitching further reveal this model's performance attributes. Drivers will be inspired to switch to Sport mode and turn up the tunes on the available 9-speaker Alpine® Sound System with trunk-mounted subwoofer and Surround Sound.



20-INCH BLACK NOISE ALUMINUM WHEELS



GLOSS BLACK GRILLE AND BLACK CHROME SURROUND

AN ANODIZED APPROACH

The distinctive finishes available on the 300S Alloy Edition Package offer an alluring combination of warm and cool hues and special metalworks styling. The exterior features Dark Bronze upper and lower grille surrounds, Dark Bronze aluminum wheels, a Liquid Titanium Chrome Chrysler wing badge, Dark Bronze badging and Titanium-finish exhaust tips. The interior mixes Black Nappa leather with Caramel stitched surfaces and Titanium-finish accents for a heightened dose of polish.

ON THE BEAM OF BRILLIANCE

The 300S adds unique Black bezels to the headlamps and taillamps, along with LED fog lamps and a Gloss Black daylight-opening (DLO) surround moulding, presenting an illuminated attitude. The available High Intensity Discharge (HID) headlamps and Auto High-Beam Headlamp Control automatically adjust to optimize the driver's view of the road ahead.

PERFORMANCE APPEARANCE

The unequivocal 300S exterior demeanour displays a Black Chrome surround with the Gloss Black "S" grille, a Black Chrome lower front-fascia accent strip, 20-inch Black Noise aluminum wheels on rear-wheel-drive (RWD) models and an available Black roof to make a bold statement.

CHOICE, CONNECTION AND HARMONY FROM AN 8.4-INCH TOUCHSCREEN



APPLE CARPLAY⁶ SEAMLESSLY INTEGRATES IPHONE[®] FUNCTIONALITY WITH UCONNECT[®] 4C RADIOS

THE WORLD IN YOUR EYES WITH UCONNECT

Stay entertained and connected while focused on the road with the expansive 8.4-inch touchscreen media hub. The standard Uconnect 4C multimedia centre displays climate and multimedia controls and radio settings. Choose your top go-to selections with the standard Drag-and-Drop Menu Bar to keep your favourite Uconnect services on the main screen.

HANDS-FREE COMMUNICATION⁷

With your compatible phone paired to the Uconnect system, Voice Text Reply⁸ can announce and read incoming texts. Siri[®] Eyes Free⁹ allows you to make voice commands with your iPhone 4s or later, and Do Not Disturb can route incoming calls to voicemail and suppress texts or send automated replies, keeping your hands on the wheel and eyes on the road.

A PERSONAL ROAD MAP TO CONVENIENCE

3D NAVIGATION¹⁰ IMAGERY

Identifying your whereabouts is an exact science with the Uconnect[®] 4C NAV¹⁰ multimedia centre's integrated navigation, including 3D landmarks, city models, digital terrain maps, enhanced graphics and one-step voice destination entry. Available.



The advanced standard in-vehicle SiriusXM Guardian¹¹ connectivity provides help when you need it most with Roadside Assistance Call and SOS Call from your touchscreen or rearview mirror button. The Uconnect mobile app helps to keep you connected by turning your phone into your vehicle's command centre. The one-year trial subscription includes Remote Vehicle Start¹² to start your car and the ability to lock or unlock the doors from virtually anywhere, as well as Stolen Vehicle Assistance alerts, Send & Go and much more.



SiriusXM satellite radio¹³ with one-year subscription is standard and includes over 120 music, news, sports and specialty channels. It also allows you to receive alerts when your favourite song, artist or team is playing on another channel. Instant Replay lets you pause and rewind programs, songs and broadcasts. Tune Start ensures you never miss a beat by starting songs from the beginning when switching between preset channels.



7-INCH FULL-COLOUR CUSTOMIZABLE IN-CLUSTER DISPLAY CENTRE

This premium display delivers digital graphics integrated between the cluster gauges. A customizable screen allows for a range of driver-assist settings, such as a digital speedometer, fuel economy, alerts for available features like Forward Collision Warning with Active Braking¹⁴ or Park-Sense[®] Front and Rear Park Assist¹⁴ and turn-by-turn directions if equipped with navigation.¹⁰



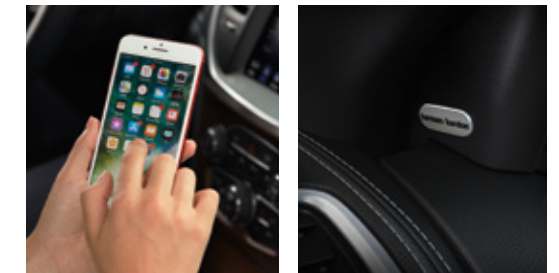
SiriusXM Traffic¹³ works with the vehicle's navigation system to display traffic and accident information to assist in routing around congested areas. SiriusXM Travel Link provides real-time local fuel prices, weather conditions, sports scores and movie times. SiriusXM Traffic and SiriusXM Travel Link include a five-year trial subscription. Available with the Uconnect 4C NAV system.



This plug-and-play capability provides a safer way to use Android[™] while in your vehicle, sharing information while you easily access the best of Google[™]: Google Maps with voice-guided navigation¹⁰ and Google Play Music; place phone calls or send and receive messages and ask Google any question by voice command.⁷



The smarter, safer way to use your iPhone[®] inside your vehicle. Plug in to seamlessly integrate Uconnect. You can use the touchscreen or Siri^{®9} to make calls, access Apple Music, send and receive messages, get directions optimized for traffic conditions, and more while staying focused on the road.⁷



YOUR PERSONAL HOTSPOT¹⁵

Available Uconnect 4G LTE Wi-Fi makes securing the perfect location to get online simple with a built-in hotspot¹⁵ that connects to your personal Wi-Fi account. With a trusted nationwide network, you're always connected for up to eight devices — within 15 metres of your vehicle. A three-month trial by AT&T is included on all new 2019 Chrysler 300 models.

SURROUND SOUND

The Harman Kardon[®] Premium Audio System, available on 300 Limited and 300C, gives a powerful and perfectly tuned audio experience. The 19-speaker multichannel Surround Sound immerses you and your passengers in optimum music playback realism.

MOST TECHNOLOGICALLY ADVANCED ALL-WHEEL-DRIVE SYSTEM IN ITS CLASS¹



300S AWD SHOWN IN GRANITE CRYSTAL METALLIC

ALL-SEASON HANDLING — BEST-IN-CLASS¹ ADVANCED ALL-WHEEL DRIVE (AWD)

Available on all 3.6L V6 engine models, the AWD system automatically engages based on driving conditions. It activates when wheel-slip is detected, wipers are activated, Sport mode is engaged or the steering wheel-mounted paddle shifters are activated. This advanced AWD system also activates when the outside temperature dips below approximately 4 °C (40 °F) or when road slope significantly changes. The system's design provides a seamless transition between rear-wheel drive and AWD, resulting in optimum all-weather performance while delivering Best-in-Class³ AWD fuel economy.[†]

ACTIVE SAFETY AND TECHNOLOGY FEATURES WITH AVAILABLE SAFETYTEC™ PACKAGES

Activated as needed, innovative advanced safety features are part of the available SafetyTec packages, including technology capabilities like Adaptive Cruise Control with Stop,¹⁴ Forward Collision Warning with Active Braking,¹⁴ Blind-Spot Monitoring¹⁴ with Rear Cross-Path Detection,¹⁴ Lane Departure Warning with Lane Keep Assist,¹⁴ and Park-Sense® Front and Rear Park Assist.¹⁴ These protective responses are guided by the principles of automatic intelligence to automatically assist and alert the driver to prevent a potential collision.



80+

AVAILABLE ACTIVE
AND PASSIVE SAFETY &
SECURITY FEATURES

BOOST TRACTION AND CONFIDENCE



ADAPTIVE CRUISE CONTROL (ACC) WITH STOP¹⁴

Utilizing radar and video sensors, this available feature identifies vehicles in the forward path and maintains a safe, driver-selectable distance. Under certain traffic conditions, ACC with Stop¹⁴ has the ability to bring the vehicle to a full stop without driver intervention. After bringing the vehicle to a stop, the system will hold the brakes for two seconds before releasing, which requires the driver to take control and manually apply the brakes if a longer stop is required.



LANE DEPARTURE WARNING (LDW) WITH LANE KEEP ASSIST¹⁴

With a forward-facing camera mounted inside the rearview mirror, this available system can gauge the vehicle's position and movement between the road lines. If the LDW¹⁴ system detects the vehicle drifting out of its lane without turn signal activation, the driver is warned through a slight nudge in the steering wheel. If the drift is not manually corrected, the Electric Power Steering (EPS) system can realign the vehicle to its correct lane position.



ELECTRONIC STABILITY CONTROL (ESC)¹⁶

In adverse conditions, ESC¹⁶ and Brake Assist work with an All-Speed Traction Control System to help maintain vehicle stability, limit oversteer or understeer and selectively apply brake force when needed.



REACTIVE FRONT HEAD RESTRAINTS¹⁷

The reactive front head restraints¹⁷ automatically move forward and upward in the event of a rear-end collision to decrease the space between the head restraint¹⁷ and the occupant's head, helping to reduce the chance of injury.

[†]Based on 2018 *EnerGuide* ratings.

EQUIPPED
FOR SAFEKEEPING



PARKVIEW® REAR BACK-UP CAMERA¹⁴ DISPLAY SHOWN ON THE 8.4-INCH UCONNECT® SCREEN

 PARKVIEW REAR BACK-UP CAMERA WITH DYNAMIC GRID LINES¹⁴

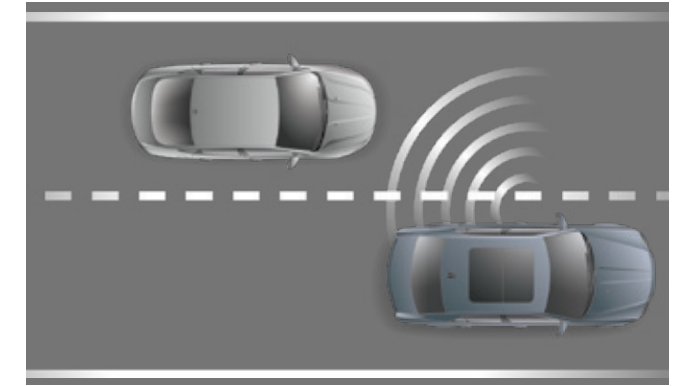
This standard system automatically displays a visual reference on the Uconnect screen of what is behind your vehicle when in Reverse. When you turn the steering wheel manoeuvring into or out of parking spaces, driveways or narrow areas, dynamic grid lines adjust to the angle to assist you.

ADVANCED BRAKE ASSIST

Automatically increasing brake force, the available Advanced Brake Assist feature ensures the shortest possible stopping distance in emergency braking situations. This system works with Forward Collision Warning,¹⁴ using both camera and radar inputs.

 BLIND-SPOT MONITORING (BSM)¹⁴ WITH REAR CROSS-PATH DETECTION¹⁴

Continually monitoring the vehicle's side blind spots using radar sensors when driving forward, the available BSM¹⁴ system alerts you of detected objects. An indicator illuminates in the appropriate sideview mirror, and if the turn signal is activated, an audible notification sounds. When in Reverse, Rear Cross-Path Detection¹⁴ automatically monitors for objects and vehicles in perpendicular relationships to the vehicle and is ideal when backing out of tight parking spaces.



 ADVANCED LIGHTING TECHNOLOGY

Automatic bi-functional halogen projector headlamps feature integrated LED daytime running lamps (DRLs) that form a "C" shape for a signature road presence. The available Bi-xenon High Intensity Discharge (HID) headlamps feature adaptive forward lighting to expand road-curve sight and automatic levelling to keep the headlamps aimed at the road up to 15 degrees of slope up or down, helping to illuminate the path ahead.

 FORWARD COLLISION WARNING (FCW) WITH ACTIVE BRAKING¹⁴

Using radar and video sensors, this available system detects whether the vehicle is approaching another vehicle or large obstacle too rapidly. The system will warn the driver of a potential collision risk via an audible chime and visual alert in the cluster display and can assist in avoiding the incident by actively applying the brakes. The driver has the ability to adjust the sensitivity and turn brake support on or off.

300 TOURING



POWERTRAIN

- 3.6L Pentastar™ Variable Valve Timing (VVT) V6 with TorqueFlite® 8-speed automatic transmission
- Rear-wheel drive (RWD)
- All-wheel drive (AWD) (includes 19-inch wheels) — Available

SELECT STANDARD EQUIPMENT

INTERIOR AMENITIES

- 7-inch full-colour customizable in-cluster display centre
- 12-volt centre console power outlet
- Acoustic windshield and front-door glass
- Air conditioning with Dual-Zone Automatic Temperature Control, air filtering and humidity sensor
- Analogue clock
- Auto-dimming rearview mirror
- Charcoal wood hydrographic pattern interior trim bezels
- Dual remote USB ports for charging
- Full-length floor console with illuminated front cup holders
- Illuminated rear assist handles
- Leather-wrapped steering wheel with mounted audio and cruise controls
- Media Centre:
 - 4G LTE Wi-Fi hotspot capable¹⁵
 - Apple CarPlay and Android Auto™⁶
 - Hands-free communication⁷ with Bluetooth® streaming audio
 - Media hub including 2 USB ports and auxiliary audio input jack
 - SiriusXM Guardian¹¹
 - SiriusXM satellite radio with 1-year subscription¹³
 - Uconnect® 4C multimedia centre with 8.4-inch touchscreen and 6 speakers
- Power windows, front 1-touch up-and-down
- Rear-seat armrest with cup holder
- Rotary E-shift
- Seating:
 - Power 12-way driver's seat including 4-way lumbar adjust
 - Premium cloth high-back front bucket seats with 60/40 split-folding rear seat
- Sun visors with illuminated vanity mirrors
- Tilt/telescoping steering column

EXTERIOR FEATURES

- 300 badge
- Automatic bi-functional halogen projector headlamps with Chrome surrounds
- Black grille with bright surround
- Body-colour door handles
- Body-colour shark fin antenna
- Body-colour, power, heated mirrors, manual folding
- Chrome-accented LED taillamps
- Dual bright exhaust tips
- Wheels and Tires:
 - 17-inch Fine Silver aluminum wheels
 - P215/65R17 low-rolling-resistance tires

SAFETY & SECURITY

- 4-wheel antilock disc brakes with Brake Assist, Rain Brake Support and Ready Alert Braking
- 7 air bags¹⁸
- Compact spare tire
- Electric power steering
- Electronic Stability Control (ESC)¹⁶ with Hill Start Assist, Electronic Roll Mitigation, Trailer Sway Control and All-Speed Traction Control
- Keyless Enter 'n Go™ with proximity entry and push-button start
- ParkView® Rear Back-Up Camera¹⁴
- Reactive front head restraints¹⁷
- Security alarm
- Sentry Key® anti-theft engine immobilizer
- Tire pressure monitoring display

OPTIONAL EQUIPMENT

- 20-inch Polished Aluminum Wheels (RWD only)
- Alpine® Audio Group
- Cargo Net
- Dual-Pane Panoramic Sunroof
- Mopar® Wireless Phone-Charging Pad
- SafetyTec™ 1
- Touring-L Group
- Uconnect 4C NAV¹⁰ Multimedia Centre with 8.4-inch Touchscreen
- Value Package

300S



POWERTRAIN

- 3.6L Pentastar VVT V6 with TorqueFlite 8-speed automatic transmission
- 5.7L HEMI® VVT V8 with FuelSaver Multi-Displacement System (MDS) and TorqueFlite 8-speed automatic transmission — Available
- RWD
- AWD (V6 only; includes 19-inch wheels) — Available

ENHANCEMENTS vs. 300 TOURING

- 6 premium speakers with 276-watt amplifier
- 180-amp alternator
- 300-horsepower rating (3.6L)
- 300S badge
- 300S grille with Black Chrome surround
- Black headlamp and taillamp accents
- Bright Chrome Chrysler wing badge with Black insert
- Gloss Black daylight-opening surround moulding
- LED fog lamps
- Nickel-finished analogue clock
- Performance suspension
- Piano Black and Satin Chrome interior trim bezels
- Rear-seat armrest with storage and illuminated cup holders
- Remote start
- Seating:
 - Heated front seats
 - Nappa leather-faced sport bucket seats
 - Power 12-way front-passenger seat including 4-way lumbar adjust
- Sport mode
- Steering wheel-mounted paddle shifters
- Universal garage door opener¹⁹
- Wheels and Tires:
 - 20-inch Black Noise aluminum wheels
 - 245/45R20 BSW All-Season Performance tires

OPTIONAL EQUIPMENT

- 300S Alloy Edition Package
- 300S Premium Group
- Alpine Audio Group
- Black-Painted Roof
- Cargo Net
- Dual-Pane Panoramic Sunroof
- Mopar Wireless Phone-Charging Pad
- S Model Appearance Package
- SafetyTec 1
- SafetyTec 2
- Uconnect 4C NAV¹⁰ Multimedia Centre with 8.4-inch Touchscreen

300 LIMITED



POWERTRAIN

- 3.6L Pentastar™ Variable Valve Timing (VVT) V6 with TorqueFlite® 8-speed automatic transmission
- Rear-wheel drive (RWD)
- All-wheel drive (AWD; includes 19-inch wheels) — Available

ENHANCEMENTS vs. 300 TOURING

- 6 premium speakers with 276-watt amplifier
- 180-amp alternator
- Auto-adjust-in-Reverse exterior mirrors
- Auto-dimming exterior driver's mirror
- Black Olive Ash Burl interior trim bezels
- Bright door handles
- Chrome, power, heated exterior mirrors, manual folding
- Door sill scuff pads
- Driver and front-passenger lower LED lamps
- Driver's memory settings for exterior mirrors, seat and radio presets
- Front and rear map pocket LED lamps
- Granite Crystal grille with Chrome surround
- Heated wood/leather-wrapped steering wheel
- LED fog lamps
- Power tilt/telescoping steering column
- Rear-seat armrest with storage and illuminated cup holders
- Remote start
- Seating:
 - Heated/ventilated front seats and heated rear seats
 - Nappa leather-faced seats with perforated inserts
 - Power 12-way front-passenger seat including 4-way lumbar adjust
- Trunk mat
- Universal garage door opener¹⁹
- Wheels and Tires:
 - 20-inch polished aluminum wheels
 - 245/45R20 BSW All-Season Performance tires

OPTIONAL EQUIPMENT

- Cargo Net
- Dual-Pane Panoramic Sunroof
- harman/kardon® Audio Group
- Light Group
- Mopar® Wireless Phone-Charging Pad
- Power Backlight Sunshade
- SafetyTec™ 1
- SafetyTec 2
- Uconnect® 4C NAV¹⁰ Multimedia Centre with 8.4-inch Touchscreen

POWERTRAIN

- 5.7L HEMI® VVT V8 with FuelSaver Multi-Displacement System (MDS) and TorqueFlite 8-speed automatic transmission
- RWD

ENHANCEMENTS vs. 300 LIMITED

- 20-inch polished aluminum wheels with Satin finish
- Adaptive Bi-xenon High Intensity Discharge (HID) headlamps
- Automatic headlamp levelling system
- Heated and cooled front-console cup holders
- Luxury front and rear floor mats
- Luxury steering wheel with Chrome accent ring
- Natural Mocha wood interior trim bezels
- Performance 4-wheel antilock disc brakes
- Platinum 300C badge
- Platinum Chrome door handles and exterior mirrors
- Platinum grille and surround
- Premium quilted Nappa leather-faced seats with perforated inserts
- Sport mode
- Steering wheel-mounted paddle shifters

OPTIONAL EQUIPMENT

- Cargo Net
- Dual-Pane Panoramic Sunroof
- harman/kardon Audio Group
- Mopar Wireless Phone-Charging Pad
- Power Backlight Sunshade
- Premium Leather Interior Group
- SafetyTec 1
- SafetyTec 2
- Sun, Sound & NAV¹⁰ Package
- Uconnect 4C NAV¹⁰ Multimedia Centre with 8.4-inch Touchscreen

WHEELS



17-inch Fine Silver aluminum
Standard on 300 Touring RWD



18-inch polished aluminum
Available on 300 Touring RWD with Touring-L Group



19-inch polished aluminum
Standard on 300 Touring AWD and 300 Limited AWD



20-inch Black Noise aluminum
Standard on 300S RWD



19-inch Black Noise aluminum
Standard on 300S AWD



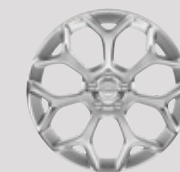
20-inch Dark Bronze aluminum
Standard on 300S Alloy Edition RWD



19-inch Dark Bronze aluminum
Standard on 300S Alloy Edition AWD



20-inch polished aluminum
Standard on 300 Limited RWD; Available on 300 Touring RWD

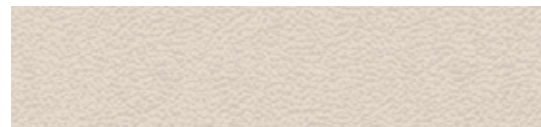


20-inch polished aluminum with Satin finish
Standard on 300C

INTERIOR COLOURS



Premium cloth — Black
Standard on 300 Touring



Nappa leather-faced — Linen
Available on 300 Touring with
Touring-L Group or Value Package



Nappa leather-faced — Black with Caramel accent
stitching and embroidered "S" logo
Standard on 300S Alloy Edition; includes
perforated inserts with 300S Premium Group



Nappa leather-faced with perforated
inserts — Black
Standard on 300 Limited



Premium quilted Nappa leather-faced with
perforated inserts — Black
Standard on 300C



Premium cloth — Linen
Standard on 300 Touring



Nappa leather-faced — Black with Light Diesel
accent stitching and embroidered "S" logo
Standard on 300S; includes perforated inserts with
300S Premium Group



Nappa leather-faced with Alcantara® bolsters and
perforated inserts — Black with Light Diesel accent
stitching and embroidered "S" logo
Available on 300S with S Model
Appearance Package



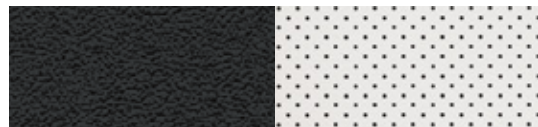
Nappa leather-faced with perforated inserts —
Deep Mocha
Standard on 300 Limited



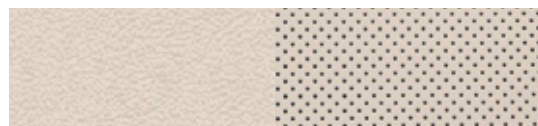
Premium quilted Nappa leather-faced with
perforated inserts — Deep Mocha
Standard on 300C



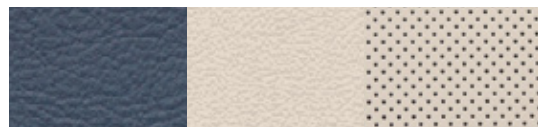
Nappa leather-faced — Black
Available on 300 Touring with
Touring-L Group or Value Package



Nappa leather-faced — Black and Smoke
with Light Diesel accent stitching and
embroidered "S" logo
Standard on 300S; includes perforated inserts with
300S Premium Group



Nappa leather-faced with perforated
inserts — Linen
Standard on 300 Limited

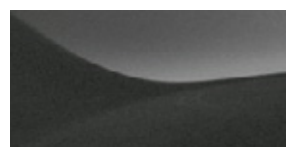


Premium quilted Nappa leather-faced with
perforated inserts — Indigo/Linen with Linen
accent stitching
Standard on 300C

EXTERIOR COLOURS



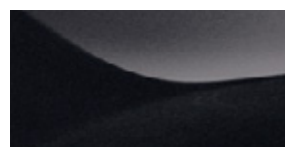
Velvet Red Pearl



Ceramic Grey



Gloss Black



Granite Crystal Metallic



Maximum Steel Metallic



Ocean Blue Metallic



Silver Mist*



Bright White

*Late availability

PACKAGE DETAILS

5.7L HEMI® VVT V8 ENGINE

- 220-mm rear axle
- Performance 4-wheel antilock disc brakes
- Performance suspension

Note: Includes S Model Appearance Package on 300S

300S ALLOY EDITION PACKAGE

- 19-inch Dark Bronze aluminum wheels (AWD)
- 20-inch Dark Bronze aluminum wheels (RWD)
- Alloy Edition floor mats
- Black Nappa leather-faced seats with Caramel accent stitching
- Dark Bronze badging and grille surround
- Liquid Titanium Chrome Chrysler wing badge
- Piano Black and Titanium interior accents
- Titanium exhaust tips

300S PREMIUM GROUP

- Adaptive Bi-xenon High Intensity Discharge (HID) headlamps
- Auto-adjust-in-Reverse exterior mirrors
- Auto-dimming exterior driver's mirror
- Automatic headlamp levelling system
- Door sill scuff pads
- Driver and front-passenger lower LED lamps
- Driver's memory settings for exterior mirrors, seat and radio presets
- Front and rear map pocket LED lamps
- Heated rear seats
- Heated steering wheel
- Power backlight sunshade
- Power tilt/telescoping steering column
- Trunk mat
- Ventilated front seats

ALPINE® AUDIO GROUP

- 9 premium speakers
- Trunk-mounted subwoofer

AWD ADDS/ENHANCEMENTS (V6 MODELS)

- 3.07 rear-axle ratio
- 19-inch aluminum wheels
- 235/55R19 BSW All-Season Performance tires
- Active transfer case with front-axle disconnect
- AWD badge
- AWD suspension
- Performance 4-wheel antilock disc brakes

HARMAN/KARDON® AUDIO GROUP

- 19 premium harman/kardon speakers
- harman/kardon GreenEdge™ amplifier

Note: removes power backlight sunshade

LIGHT GROUP

- Adaptive Bi-xenon HID headlamps
- Automatic headlamp levelling system

PREMIUM LEATHER INTERIOR GROUP

- Premium leather-wrapped instrument panel, door bolsters and centre console

S MODEL APPEARANCE PACKAGE

- Body-colour performance front fascia
- Body-colour rear spoiler
- Lower grille close-out panels
- Premium fog lamps
- Sculpted side sills

SAFETYTEC™ 1

- Auto-dimming exterior driver's mirror
- Blind-Spot Monitoring¹⁴ with Rear Cross-Path Detection¹⁴
- Exterior mirrors with supplemental turn signals and courtesy lamps
- Park-Sense® Front and Rear Park Assist¹⁴

SAFETYTEC 2

- Adaptive Cruise Control with Stop¹⁴
- Advanced Brake Assist
- Auto High-Beam Headlamp Control
- Forward Collision Warning with Active Braking¹⁴
- Lane Departure Warning with Lane Keep Assist¹⁴
- Rain-sensing windshield wipers

SUN, SOUND & NAV¹⁰ PACKAGE

- 19 premium harman/kardon speakers and harman/kardon GreenEdge amplifier
- Dual-pane panoramic sunroof
- Uconnect® 4C NAV¹⁰ multimedia centre with 8.4-inch touchscreen

TOURING-L GROUP

- 18-inch polished aluminum wheels (RWD)
- Heated front seats
- LED fog lamps
- Nappa leather-faced seats
- P225/60R18 BSW Touring tires (RWD)
- Power 12-way driver and front-passenger seats including 4-way lumbar adjust
- Rear-seat armrest with storage and illuminated cup holders
- Remote start
- Universal garage door opener¹⁹

VALUE PACKAGE

- Dual-pane panoramic sunroof
- LED fog lamps
- Nappa leather-faced seats
- Power 12-way driver and front-passenger seats including 4-way lumbar adjust
- Rear-seat armrest with storage and illuminated cup holders
- Remote start
- Uconnect 4C NAV¹⁰ multimedia centre with 8.4-inch touchscreen
- Universal garage door opener¹⁹

UCONNECT 4C

- 4G LTE Wi-Fi hotspot capable¹⁵
- 8.4-inch full-colour high-resolution touchscreen display
- AM/FM/HD radio (where stations are available)
- Apple CarPlay and Android Auto™ with plug-and-play capability⁶
- Do Not Disturb feature to route incoming calls to voicemail and suppress texts or send automated replies
- Drag-and-Drop Menu Bar
- Hands-free communication⁷ with Bluetooth® streaming audio
- HVAC control integration
- Media hub including 2 USB ports and auxiliary audio input jack
- Preset text reply and incoming voice text message reader⁸

UCONNECT 4C (continued)

- Siri® Eyes Free⁹ for iPhone® 4s and later
- SiriusXM Guardian¹¹
- SiriusXM satellite radio with 1-year subscription¹³ including Tune Start, replay, and alert settings for favourite songs, artists and sports teams

UCONNECT 4C NAV¹⁰

- Uconnect 4C features plus:
- Premium navigation with pinch-and-zoom multi-touch features, 1-step voice destination entry and 3D landmarks, city models and terrains¹⁰
- SiriusXM Travel Link and SiriusXM Traffic including a 5-year subscription¹³

SPECIFICATIONS*

Curb Weight, kg (lb)	RWD	AWD
3.6L Pentastar™ VVT V6	1820 (4013)	1935 (4267)
5.7L HEMI VVT V8 with FuelSaver MDS	1987 (4380)	—
GVWR, kg (lb)	RWD	AWD
3.6L Pentastar VVT V6	2313 (5100)	2427 (5350)
5.7L HEMI VVT V8 with FuelSaver MDS	2427 (5350)	—
Towing (when properly equipped), kg (lb)	454 (1000)	
Maximum towing capacity	454 (1000)	
Exterior, mm (in)		
Wheelbase	3052 (120.2)	
Front Track	1611 (63.4)	
Rear Track	1620 (63.8)	
Overall Length	5044 (198.6)	
Overall Height	RWD with 18-inch wheels — 1485.2 (58.5)	RWD with 20-inch wheels — 1492.0 (58.7)
	AWD with 19-inch wheels — 1503.9 (59.2)	
Overall Width	1902 (75.0)	
Ground Clearance	RWD with 18-inch wheels — 120.3 (4.7)	RWD with 20-inch wheels — 127.9 (5.0)
	AWD with 19-inch wheels — 122.3 (4.8)	
Interior, mm (in)	Front	Rear
Headroom	981 (38.6)	963 (37.9)
Headroom with Dual-Pane Panoramic Sunroof	937 (36.9)	937 (36.9)
Legroom	1061 (41.8)	1019 (40.1)
Hip Room	1428 (56.2)	1425 (56.1)
Shoulder Room	1510 (59.5)	1465 (57.7)
Volumes & Capacities		
Cargo Volume, L (cu ft)	462 (16.3)	
Total Interior Volume, L (cu ft)	3010 (106.3)	
Seating Capacity	5	
Fuel Tank Capacity, L (imp gal)	70 (15.4)	

*Maximum ratings based on properly equipped vehicles.

POWER AND FUEL ECONOMY

Based on 2019 *EnerGuide* fuel consumption ratings. Government of Canada test methods used. Your actual fuel consumption will vary based on driving habits and other factors. For *EnerGuide* information, please ask your retailer or visit the Government of Canada Web site: www.vehicles.nrcan.gc.ca

Engine	Transmission	Horsepower	Torque (lb-ft)	L/100 km (mpg)	
				City	Highway
3.6L Pentastar VVT V6 (RWD)	TorqueFlite® 8-speed automatic	292	260	12.4 (23)	7.8 (36)
3.6L Pentastar VVT V6 (AWD)	TorqueFlite 8-speed automatic	292	260	12.8 (22)	8.7 (32)
5.7L HEMI VVT V8 with FuelSaver MDS	TorqueFlite 8-speed automatic	363	394	14.7 (19)	9.4 (30)



WARRANTIES: 2019 Chrysler, Jeep, Dodge and Ram vehicles are backed by a 5-year or 100,000-kilometre fully transferable Powertrain Limited Warranty* with \$0 deductible plus 24-hour roadside assistance. SRT vehicles are backed by a 3-year or 60,000-kilometre fully transferable Powertrain Limited Warranty* with \$0 deductible plus 24-hour roadside assistance. Basic Warranty coverage is for 3 years or 60,000 kilometres.* Rust-through coverage on all body sheet metal is for 3 years. The Cummins Turbo Diesel engine is protected by a separate Limited Warranty covering the engine for 5 years or 160,000 kilometres.* The EcoDiesel engine is backed by a 5-year or 100,000-kilometre fully transferable Powertrain Limited Warranty* with \$0 deductible plus 24-hour roadside assistance.* Whichever comes first. Some conditions may apply. *The 5-Year/100,000-Kilometre Powertrain Limited Warranty does not apply to vehicles sold for certain commercial uses. See your retailer for full details.

Authentic Chrysler accessories by Mopar are designed specifically for your Chrysler vehicle for exceptional fit, finish and performance. Visit your retailer or mopar.ca.

MOPAR VEHICLE PROTECTION: FCA Canada Inc. has a vested interest in your satisfaction and owner experience with your new vehicle. Mopar Vehicle Protection offers extended service and maintenance plans to help ensure you'll enjoy your vehicle for many years down the road — for just pennies a day. For more information on comprehensive vehicle coverage, see your local Chrysler, Jeep, Dodge and Ram retailer or call 1-800-465-2001.

ABOUT THIS CATALOGUE: since the time of printing, some of the information you'll find in this catalogue may have been updated. Ask your retailer for details. Some of the equipment shown or described throughout this catalogue is available at extra cost. Specifications, descriptions, illustrative materials and all competitive comparisons contained herein are as accurate as known at the time this publication was approved for printing. FCA Canada Inc. reserves the right to make changes at any time without notice and without incurring obligation. For the price of the model with the equipment you desire, or verification of specifications contained herein, see your Chrysler, Jeep, Dodge and Ram retailer. ©2018 FCA Canada Inc. All Rights Reserved. Chrysler, Dodge, Jeep, Ram, Mopar, SRT, Chrysler 300S, 300C, 300 Limited, 300 Touring, the Chrysler wing design, HEMI, Mopar Vehicle Protection, Park-Sense, ParkView, Sentry Key, TorqueFlite and Uconnect are registered trademarks, and Pentastar, SafetyTec, Send & Go and Keyless Enter 'n Go are trademarks of FCA Canada Inc. Alcantara is a registered trademark of Alcantara S.p.A. Alpine and the Alpine logo are registered trademarks of Alpine Electronics, Inc. Android and Android Auto are trademarks of Google LLC. Bluetooth is a registered trademark of Bluetooth SIG, Inc. Sirius, XM and all related marks and logos are trademarks of SiriusXM Radio Inc. Harman Kardon is a registered trademark and GreenEdge is a trademark of Harman International Industries, Incorporated. Cummins is a registered trademark of Cummins, Inc. Siri and iPhone are registered trademarks of Apple Inc. Facebook and logo are registered trademarks of Facebook, Inc. The Twitter name, logo, Twitter T, Tweet and Twitter bird are service marks of Twitter, Inc. All other trademarks, images and logos are the property of their respective owners and are displayed in this publication with permission. All rights reserved.

DISCLAIMERS: (1) Based on the latest available competitive information and *WardsAuto* Large Regular Vehicle segmentation. Excludes other vehicles designed and manufactured by FCA US LLC. (2) Based on IHSMarkit Automotive Canadian New Vehicle Total Registrations from CYE 2011 – 2015 and CYTD July 2016 for all Cars, Light-Duty and Medium-/Heavy-Duty Trucks. (3) Based on *WardsAuto* Large/Regular Car segmentation and *EnerGuide* fuel consumption ratings. Government of Canada test methods used. Your actual fuel consumption will vary based on driving habits and other factors. 12.4 L/100 km (23 mpg) city and 7.8 L/100 km (36 mpg) highway on Chrysler 300 RWD with 3.6L Pentastar VVT V6 engine and 8-speed automatic transmission. 12.8 L/100 km (22 mpg) city and 8.7 L/100 km (32 mpg) highway on Chrysler 300 AWD with 3.6L Pentastar VVT V6 engine and 8-speed automatic transmission. Ask your retailer for *EnerGuide* information. (4) Based on the latest available competitive information and *WardsAuto* Large Regular Vehicle segmentation. "Most Luxurious" claim based on Chrysler 300C model. Excludes other vehicles designed and manufactured by FCA US LLC. (5) Based on IHSMarkit Automotive Canadian New Vehicle Total Registrations from CYE 2011 – 2015 and CYTD July 2016 for all Cars, Light-Duty and Medium-/Heavy-Duty Trucks with a V8 engine. (6) Driving while distracted can result in loss of vehicle control. Only use mobile phones and other devices, even with voice controls, when it is safe to do so. Apple CarPlay requires a compatible iPhone connected via USB cable to the Uconnect system. Android Auto requires the Android Auto app on Google Play and an Android-compatible smartphone running Android 5.0 Lollipop or higher. Data plan rates may apply. (7) Driving while distracted can result in loss of vehicle control. Only use mobile phones and other devices, even with voice commands, when it is safe to do so. Voice commands of phone require a Bluetooth-compatible phone. (8) Preset voice-to-text messaging and incoming text message reading require a MAP-enabled phone. (9) Siri Eyes Free requires an iPhone equipped with Siri. Certain features not available while the vehicle is in motion. iPhone must be within active cellular range. Customer's existing iPhone data rates apply to Internet-supported features. (10) Never program while driving. GPS mapping and available 3D navigation may not be detailed or available in all areas or reflect current road regulations. (11) All SiriusXM Guardian-equipped vehicles come with a 12-month trial effective on the date of purchase or lease of a new vehicle. Enrollment in the trial is required to receive service. Upon expiration of the trial period, purchase of a subscription is required to continue SiriusXM Guardian. Services can only be used where cellular coverage is available. See Uconnect and SiriusXM Guardian Terms of Service for complete service limitations. (12) When equipped with remote start. (13) Requires SiriusXM radio subscriptions governed by Sirius terms and conditions, available at siriusxm.ca. (14) This is a driver convenience system, not a substitute for active driver involvement. The driver must remain aware of his/her surroundings and be prepared to take corrective action to avoid collisions. (15) Wi-Fi Hotspot available through third-party subscription. Requires Internet-enabled mobile device. See retailer for details. This feature is not intended for use by the driver while the vehicle is in motion. Always drive carefully. (16) No system can repeal the laws of physics or overcome careless driving actions. Performance is limited by available traction, which snow, ice and other conditions can affect. When the warning lamp flashes, the driver needs to use less throttle and adapt speed and driving behaviour to prevailing road conditions. (17) Always sit properly with the head restraint properly adjusted. Never place anything in front of the head restraint. (18) The Advanced Front Air Bags in this vehicle are certified to the Federal regulations for Advanced Air Bags. Children 12 years old and younger should always ride buckled up in a rear seat. Infants in rear-facing child restraints should never ride in the front seat of a vehicle with a passenger front air bag. All occupants should always wear their lap and shoulder belts properly. (19) Not compatible with all garage door openers.



Like us on:
[facebook.com/
chryslercanada](https://www.facebook.com/chryslercanada)



Follow us on:
[twitter.com/
chryslercanada](https://twitter.com/chryslercanada)



Sign up for
updates at:
chrysler.ca

2019 CHRYSLER 300
CHRYSLER.CA / 1.800.361.3700

Chrysler is a registered trademark of FCA US LLC.