

POLICE AND SPECIAL SERVICE VEHICLES



HIGHLIGHTING THE ALL-NEW 2013
FORD POLICE INTERCEPTORS



FLEET

You're sworn to serve. They're built to serve – *you*.



TWO ALL-NEW POLICE INTERCEPTORS = ONE FAMILY WITH A GREAT DEAL IN COMMON. The Police Interceptor Sedan and Utility hail from the same platform. They share a host of safety, performance, durability, transport and mobile-office components, leading to many service, maintenance and upfit-friendly commonalities – all of which help to consolidate bottom-line savings. Both Interceptors come with an identical bumper-to bumper limited warranty¹ that covers every shared element, including: all-wheel drive, V6 power with 6-speed transmission, police-tuned suspension, high-performance brakes, high-volume cooling system, 220-amp alternator, heavy-duty battery, 18" 5-spoke steel wheels and w-rated tires. With more than 3,400 Ford dealerships across North America, there's no lack of family support.

SEDAN AND UTILITY MODELS: PURPOSE-BUILT IN THE USA SPECIFICALLY FOR POLICE DUTY. Ford Police Interceptors are the genuine articles. Based on CVPI (Crown Victoria Police Interceptor) real-world experience, **they're the first-and-only pursuit-rated, all-wheel-drive models produced exclusively for North American law enforcement agencies.** *Engineered in Michigan. Powered in Ohio. Assembled in Illinois.*

¹See your dealer for warranty details.

Made in the USA with domestic and foreign parts.



Always on guard: Officer protection is priority one.

75-MPH REAR-END CRASH-TESTED – AND PASSED.

Ford Police Interceptors continue this extreme got-your-back tradition: They're the only vehicles certified to the 75-mph rear-impact standard.

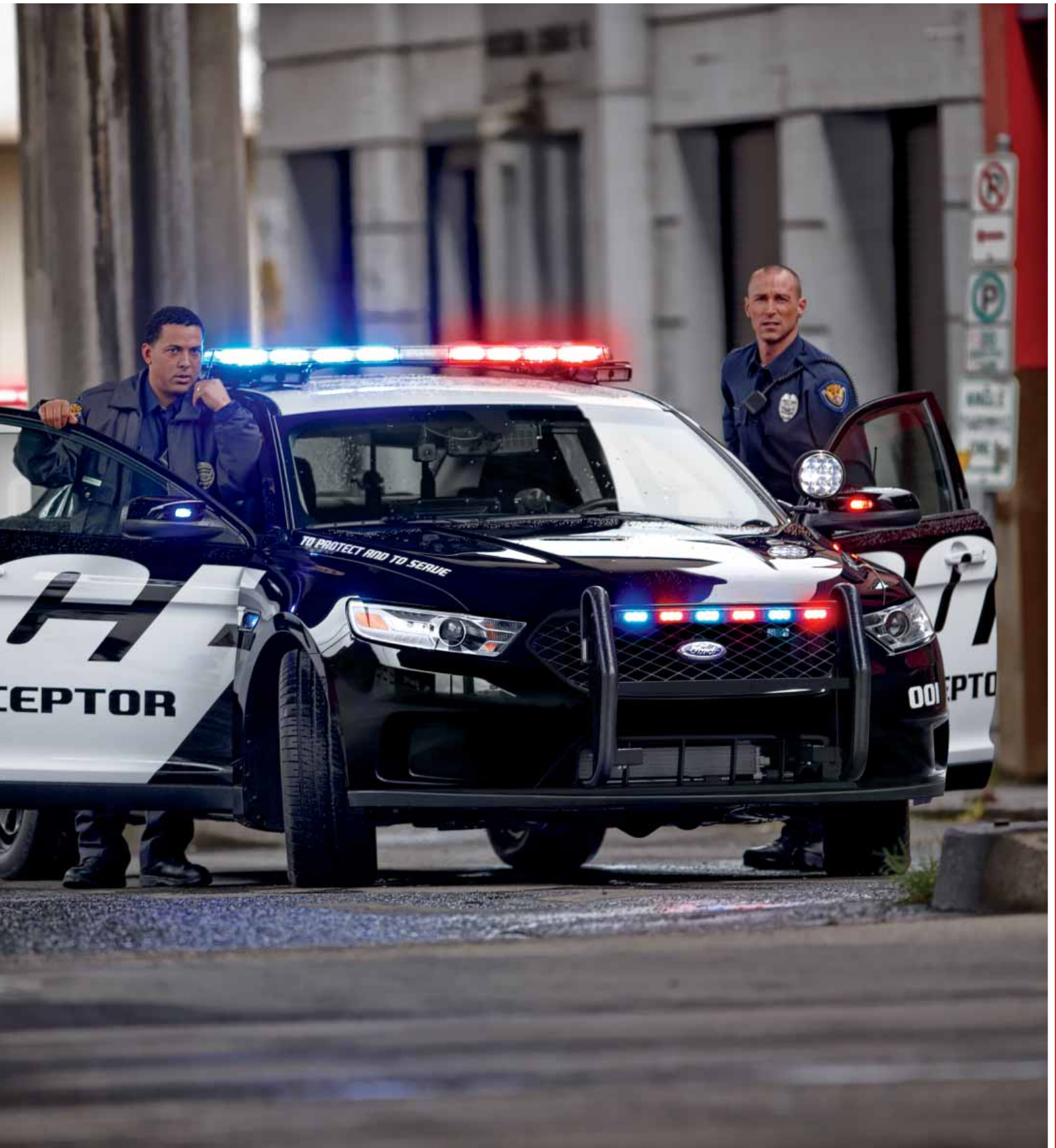
FRONT DOOR PANELS GO BALLISTIC! Manufactured by BLS Textiles, each panel is certified to full NIJ Level III specifications² – National Institute of Justice Standard 0108.01. Per LAPD (Los Angeles Police Department) specs, they're also made to defeat some of the toughest special-threat rounds² – 7.62x51 mm M80, 7.62x39 mm Type 56, plus 5.56x45 mm M193 and M855. Ballistic panels are available for the driver or passenger door.

A SENSE OF SECURITY SHOULD HANDCUFFS FAIL.

Steel intrusion plates are built into the front seat backs. And rear-door lock plungers are hidden – each one is manually operable only by the officers in front.

VIRTUAL FORCE FIELD OF ASSURANCE. Safety cell construction works to help direct the force of a collision around the occupant compartment. Crumple zones help absorb and dissipate the energy of a crash. Advanced, ultra-high-strength boron and steel lend mightily to vehicle integrity. The sophisticated Personal Safety System,TM innovative Safety Canopy[®] System and front-seat side airbags³ are standard.





Beyond all-wheel drive – this is All-Wheel Pursuit.



¹Remember that even advanced technology cannot overcome the laws of physics. It's always possible to lose control of a vehicle due to inappropriate driver input for the conditions. For more information on AdvanceTrac with or without RSC, visit fleet.ford.com.

THE CONFIDENCE OF ALL-SEASON, ALL-WEATHER, ALL-EVERYTHING HANDLING – STANDARD. From the only manufacturer with over 60 years of continuous service on the nation’s first-responder force comes a Police Interceptor exclusive: Intelligent AWD tuned to optimize traction during pursuit maneuvers. To place more control directly in the officer’s grip, this self-activating system kicks in nearly instantly to variably distribute torque before wheelslip occurs. AWD is equally impressive off the line and in the turns on wet, snowy or dry roads. It was co-developed with EVOC (Emergency Vehicle Operator Course) instructors for utmost responsiveness and performance in challenging situations.

ADVANCETRAC® STABILITY.¹ Brake-actuated traction control helps avoid skidding and fishtailing, so the Interceptor remains true to its intended path.





Justice is swift, indeed.



POLICE-CALIBRATED HIGH PERFORMANCE. When circumstances call for aggressive action, count on Ford Police Interceptors to nab the bad guys. A trio of available V6 powerplants each **pump out more horsepower than the CVPI's V8**. All that new-tech muscle is flexed way more efficiently and with fewer emissions, allowing municipalities to better meet green goals (both financially and environmentally). The torque-happy, twin-turbocharged, direct-injection EcoBoost® V6² – exclusive to the Sedan – generates 365 hp, and at 1,500 rpm delivers an immediate 350 lb.-ft. of torque. A 280+ hp 3.5L flex-fuel³ V6 is standard. Output for the 3.7L flex-fuel V6 on the Utility model is 300 horses.

The 6-speed transmission's shift points are programmed to help enhance acceleration and responsiveness. Electric power-assisted steering responds on the go, with light efforts at low speeds for ease of turning effort. Suspension components are tuned for cornering and maximum maneuverability at any speed.



3 ALL-NEW, ALL-POWERFUL V6 POWERTRAINS OFFER DISTINCT PERFORMANCE ADVANTAGES OVER THE CVPI.

	 2013 Sedan 3.5L Ti-VCT V6 FFV³	 2013 Sedan 3.5L EcoBoost V6	 2013 Utility 3.7L Ti-VCT V6 FFV³	 2011 CVPI 4.6L OHC V8 FFV
Horsepower (hp @ rpm)	280+ @ 6,250	365 @ 5,500	300 @ 6,250	250 @ 5,000
Torque (lb.-ft. @ rpm)	250 @ 4,500	350 @ 1,500 - 5,250	280 @ 4,500	297 @ 4,000
Drivetrain	AWD/FWD	AWD	AWD/FWD	RWD
				



Because there will be bumps in the line of duty.

HEAVY-DUTY WHEELS TEAMED WITH EXCLUSIVE POLICE-PURPOSE TIRES. Hefty 18" steel wheels are designed to withstand the punishment of daily duty no matter where the trail leads. The 5-spoke design lets the brakes breathe freely and stay as cool as possible. Specially constructed tires – unique to the Ford Police Interceptors – maximize grip, handling, roll and rigidity no matter the weather. They keep stopping distances to a minimum, and tread wear longevity is equally impressive. A Tire Pressure Monitoring System is standard (includes full-size spare).

HEAVY-DUTY ANTI-LOCK DISC BRAKES MAXIMIZE HIGH PERFORMANCE. Police Interceptors don't just need to go fast, they must also come to rapid halts – under control. Developed in association with the Los Angeles Sheriff's Department (LASD) and the Michigan State Police (MSP), this unique system strikes an ideal balance between stopping power and long wear life. It boasts increased swept area via larger diameter rotors; unique inverted hat-vented rotors and unique calipers contribute to the high thermal capacity.

HEAVY-DUTY SUSPENSIONS RESPOND IN THE NAME OF CONTROL, CAPABILITY AND COMFORT. For smooth, predictable high-speed handling at every turn, the front and multilink rear suspensions are fully independent – each one also incorporates a brawny stabilizer bar to combat body lean. Helical coil springs and stiffened, gas-pressurized hydraulic shocks are tuned to the rigors of police work. Premium hubs and bearings are extra large for long-term durability.

HEAVY-DUTY COOLING SYSTEM REGULATES EXTREME HEAT. An extra-large, high-volume radiator, engine oil cooler and transmission fluid cooler work in concert with the police-calibrated fan settings, mesh grille and wide airflow openings to ensure optimal operation in times of pursuit and periods of idling.

HEAVY-DUTY 220-AMP ALTERNATOR MEETS DEMANDS. State-of-the-art support for radar, lights, radios, cameras, computers, printers and the like.



Deflector plate.

DEFLECTOR PLATE SHIELDS THE UNDERBODY.

The under carriage is up to daily-duty punishment with this unique Ford designed deflector plate. It deflects road debris to help prevent damage. (Sedan only.)

MICROCHIP-FREE FLEET KEY IS SIMPLICITY

AT ITS FINEST. Use one key style for the entire fleet: The cost of making a copy or replacement is the going rate at the local hardware store. Key lock cylinders – on front doors and decklid/liftgate – provide quick, reliable access anytime.



Time to take the law into your own hands.

PURPOSE-BUILT WITHIN. How an officer enters, exits, sits, shifts gears and uses electronics are just a few of the things meticulously accounted for within the Police Interceptor cabin. Amenities range from a tilt steering column and power-adjustable pedals, to the recessed tray atop the instrument panel that's ideal for police equipment.

CONNECT WITH VOICE-ACTIVATED FORD SYNC.^{®1,2} Just press a button on the steering wheel and speak commands. Once paired, SYNC recognizes a cell phone and automatically supports hands-free voice calling. The no-monthly-fee SYNC Services account provides, turn-by-turn driving directions,² custom traffic alerts,² 911 Assist[™] and much more. SYNC also allows verbal command of devices that are plugged into the USB port. Get more informed at SyncMyRide.com.

RADAR DETECTION. BLIS[®] (Blind Spot Information System) with cross-traffic alert^{1,3} can detect if a vehicle is in the way before changing lanes – the warning sign is an amber light in the corresponding sideview mirror. When slowly backing out of a spot, this system's radar also issues an audible alert, flashes a light in the sideview mirror, and warns you in the message center if any vehicles are detected behind.

MORE WAYS TO RAISE AWARENESS. The ultrasonic Reverse Sensing System¹ helps to mitigate rear vehicle scuffs and bumps. It issues unique audible notifications whenever objects are recognized within 6' as the Police Interceptor backs up at slow speeds. In addition, or instead, opt for a rear view camera¹ to display a full-color, real-time image of what's happening behind the vehicle in the rearview mirror.

¹Available. ²Requires compatible mobile device. Driving while distracted can result in loss of vehicle control. Only use mobile phones and other devices, even with voice commands, when it is safe to do so. Traffic alerts and turn-by-turn directions available in select markets. Text message and data rates may apply. ³BLIS replaces standard integrated blind spot mirrors.



Console mounting plate.



Remappable switches.

AFTERMARKET COST-SAVINGS POTENTIAL.

Why do the Ford Police Interceptors have column-mounted shifters? So law enforcement has ample room – where it counts most – for police equipment. What’s more, the center-console space measures a wide-open 9" between the driver and front-passenger seats, meaning it perfectly matches the width of the CVPI center console. Easily transfer an existing CVPI apparatus directly to either new Interceptor model and reap the rewards.

KEEP HANDS ON WHEEL AND EYES ON ROAD.

Minimize distraction while performing common police tasks on the go. Ford engineers integrated a pair of customizable, auxiliary control buttons on the right side of the steering wheel. Directly connect aftermarket equipment including lights, sirens, speakers and canine door releases – whatever the need, grounded outputs are on board for immediate use in connection with these remappable steering-wheel switches.

Finest-ever Ford Police Interceptor Sedan.



FRONT-ROW COMFORT THAT'S FIRST RATE. The power driver's seat adjusts 6 ways and features manual lumbar support. Both seats are covered in police-grade, heavy-duty cloth and incorporate sculpted foam to perfectly accommodate a utility belt – *notice what a snap it is to buckle up.* Side bolsters are contoured to ensure ease of getting in and out of the cabin all day (or all night) long.

IDEAL BACKSEAT TRANSPORT. Access is made easy with wide-opening rear door hinges that are a Sedan exclusive. The rear bench maximizes space and is comprised of heavy-duty vinyl. Door panels are simplified with no mapholders or cupholders for ease of cleaning – even the manual door locks for each rear door are designed to be operable only from the front – making for an ideal transport-vehicle configuration. (Door handles and windows can be ordered as “inoperable.”)

SUPER-CAPACITY TRUNK. There's a wealth of low-liftover room to stow equipment out of sight; pull up the flat load floor for the full-size spare stationed inside. A custom-fit electronics tray is available, and so is an auto-running circulation fan to keep conditions temperate for all the devices stored in the trunk.



First-ever pursuit-rated Ford Police Interceptor Utility.





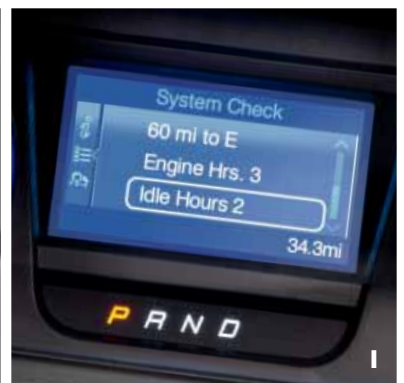
A NEW APPROACH TO CAPABILITY – WITH COMMANDING VIEWS AND PRESENCE. This intimidating-to-criminals ride is literally above the rest: Head room and leg room are generous throughout. Driver and front-passenger seats are covered in extra-tough cloth, and bolsters are designed specifically for officers to get in, get going and get out comfortably and, whenever necessary, expediently – even with fully loaded utility belts. The 60/40 split-fold bench in the 2nd row has recessed seating positions and is outfitted in easy-clean vinyl. It can be reconfigured as circumstances dictate: Quickly and conveniently fold the entire bench to make way for an incredibly advantageous 85.1-cu. ft. of load space. Auxiliary air conditioning is available.

CARGO, CARBINES AND CANINES TOO. Cavernous carry-all room makes the Police Interceptor Utility the perfect choice for K-9 officers and SWAT team members with gear. The versatile space isn't compromised – a full-size spare is stored under the flat load floor.

For matters strategic or tactical, always be practical.



FROM ENGAGING IN A CHASE OR ISSUING A CITATION TO PLANNING A RAID OR CONFISCATING CONTRABAND, PURPOSEFUL TOOLS OF THE TRADE ARE CRUCIAL. Thoughtfully taking into account the details, Ford Police Interceptors help make those myriad unexpected and expected events go smoothly. The spare (image A) isn't a compact version – it's the 18" full-size 5-spoke wheel and tire combo that matches the 4 on the road, meaning it can be readily put into high-speed use and shared between Sedan and Utility models. The Police Interceptor Sedan offers 2 trunk-based exclusives: A lockable storage unit (image B) that's ideal for seized small arms, and a sturdy, sliding electronics tray (image G). Both Interceptors are equipped with a column-mounted shifter (image C), a universal top tray (image D) on the dash, and an overhead storage console with dual-purpose red/white dome lighting (image F). Front door hinges are strengthened with unique tethers (image E) to help them swing out just right in the rush of a moment. Rear door-lock plungers (image H) are strategically placed so they can't be touched by the bad guys in back. And the engine hour meter (image I) helps maintain precise service scheduling.



Features and Options



2013 FORD POLICE INTERCEPTORS

STANDARD FEATURES

- 9" space between driver's seat and front-passenger seat for aftermarket consoles
- 12-volt powerpoints: Sedan – 2; Utility – 2
- 75-mph rear-crash tested
- All-wheel drive (AWD)
- Alternator – Heavy-duty 220-amp
- Audio – AM/FM stereo/single-CD player with MP3 capability, clock and 4 speakers (Sedan)
- Audio – AM/FM stereo/single-CD player with MP3 capability, clock and 6 speakers (Utility)
- Battery – Heavy-duty (78-amp-hr/750 CCA)
- Brakes – 4-wheel heavy-duty disc with Anti-Lock Brake System (ABS) (police-calibrated)
- Built-in steel intrusion plates in both seat backs
- Climate controls – Manual air conditioning
- Column shifter
- Console mounting plate – Front
- Cooling system – Heavy-duty
- Dash pass-through for aftermarket wiring
- Easy Fuel[®] capless fuel filler
- Electric power-assisted steering (heavy-duty)
- Engine – 3.5L Ti-VCT V6 FFV (Sedan)
- Engine – 3.7L Ti-VCT V6 FFV (Utility)
- Engine-hour meter
- Exterior key locks – Driver, front-passenger and decklid/liftgate
- Fleet key
- Flex Fuel badge
- Flooring – Heavy-duty vinyl
- Full-size spare wheel and tire
- Glass – Solar-tinted (Sedan)
- Glass – Solar-tinted 1st row; privacy glass 2nd and 3rd rows (Utility)
- Headlamps – Projector-beam halogen
- Headliner – Easy-to-drop
- Independent front and rear suspensions
- Mirrors – Power sideview, manual foldaway with integrated blind spot mirrors
- MyFord[®] with 4.2" color LCD display in police instrument cluster and center stack "smart display"
- Power-adjustable pedals
- Power door locks
- Powertrain mounts – Heavy-duty
- Power windows with one-touch-up/-down driver's side with disable feature
- Rear recovery hooks (Utility; AWD only)
- Red/white dome light – 1st row
- Seat – Front heavy-duty cloth, 6-way power driver's with manual lumbar
- Seat – Front heavy-duty cloth passenger's
- Seat – Rear vinyl bench (Sedan)
- Seat – Rear vinyl 60/40 split (Utility)
- Taillamps – Halogen (Sedan)
- Taillamps – LED (Utility)
- Tilt steering column
- Tires – P245/55R18 w-rated all-season BSW
- Transmission – 6-speed automatic (police-calibrated)
- Trunk/cargo area – Flat load floor
- Underbody deflector plate (Sedan)
- Universal equipment tray on top of instrument panel
- Wheels – Heavy-duty 18" steel

SAFETY AND SECURITY

- AdvanceTrac[®] electronic stability control (Sedan)
- AdvanceTrac with RSC[®] (Roll Stability Control[™]) (Utility)
- Airbags – Front-seat side, plus Safety Canopy[®] System (side-curtain airbags) and rollover sensor
- Battery saver
- Ignition-wired trunk release (Sedan)
- LATCH – Lower Anchors and Tether Anchors for Children in rear outboard seating positions
- Personal Safety System[™] for driver and front passenger includes dual-stage front airbags, safety belt pretensioners, safety belt energy-management retractors, safety belt usage sensors, driver's seat position sensor, crash severity sensor, restraint control module and Front-Passenger Sensing System
- SOS Post-Crash Alert System[™]
- Tire Pressure Monitoring System
- Traction control

DRIVETRAINS

Police Interceptor Sedan (AWD)	<input type="checkbox"/> P2M
Police Interceptor Sedan (FWD)	<input type="checkbox"/> P2L
Police Interceptor Utility (AWD)	<input type="checkbox"/> K8A
Police Interceptor Utility (FWD)	<input type="checkbox"/> K7A

POWERTRAINS

3.5L Ti-VCT V6 FFV with 6-speed automatic transmission (Sedan)	<input type="checkbox"/> 998
3.5L EcoBoost [®] V6 with 6-speed automatic transmission (Sedan)	<input type="checkbox"/> 99T
3.7L Ti-VCT V6 FFV with 6-speed automatic transmission (Utility)	<input type="checkbox"/> 99R

OPTIONS¹

	Sedan	Utility
1st- and 2nd-row carpeting	<input type="checkbox"/> 17I	<input type="checkbox"/> 16C
18" full-face wheel covers	<input type="checkbox"/> 64L	<input type="checkbox"/> 64B
100-watt siren/speaker	<input type="checkbox"/> 96P	<input type="checkbox"/> 18X
Ballistic door panels – Driver's door only	<input type="checkbox"/> 65E	<input type="checkbox"/> 90D
Ballistic door panels – Driver and front-passenger doors only	<input type="checkbox"/> 65C	<input type="checkbox"/> 90E
BLIS® (Blind Spot Information System) with cross-traffic alert	<input type="checkbox"/> 55B	<input type="checkbox"/> 55B
Climate control – Auxiliary air conditioning	–	<input type="checkbox"/> 17A
Dark car feature	<input type="checkbox"/> 13C	<input type="checkbox"/> 43D
Daytime running lamps	<input type="checkbox"/> 94Z	<input type="checkbox"/> 94Z
Dome light – Red/white in cargo area	–	<input type="checkbox"/> 17T
EcoBoost Speed-Limited Calibration (top speed 131 mph)	<input type="checkbox"/> 12T	–
Engine – 3.5L EcoBoost V6 (top speed 148 mph)	<input type="checkbox"/> 99T	–
Engine block heater	<input type="checkbox"/> 41H	<input type="checkbox"/> 41H
Ford SYNC® (requires Reverse Sensing System)	<input type="checkbox"/> 53M	<input type="checkbox"/> 53M
Front-wheel drive (FWD)	<input type="checkbox"/> P2L	<input type="checkbox"/> K7A
Glass – Solar-tinted 2nd row (clear)	–	<input type="checkbox"/> 92R
Glass – Solar-tinted 2nd and 3rd rows (clear)	–	<input type="checkbox"/> 92G
Hidden door lock plungers (for rear doors)	<input type="checkbox"/> 63B	<input type="checkbox"/> 52H
Hidden door lock plungers and inoperable rear door handles	<input type="checkbox"/> 63P	<input type="checkbox"/> 52P
Inoperable rear door handles/inoperable locks	<input type="checkbox"/> 18G	<input type="checkbox"/> 68G
Inoperable rear door handles/operable locks	<input type="checkbox"/> 18L	<input type="checkbox"/> 68L
Keyed alike – 1435x	<input type="checkbox"/> 43E	<input type="checkbox"/> 59E
Keyed alike – 1284x	<input type="checkbox"/> 43B	<input type="checkbox"/> 59B
Keyed alike – 0135x	<input type="checkbox"/> 43D	<input type="checkbox"/> 59D
Keyed alike – 0576x	<input type="checkbox"/> 43F	<input type="checkbox"/> 59F
Keyed alike – 1111x	<input type="checkbox"/> 43J	<input type="checkbox"/> 59J
Lockable gas cap	<input type="checkbox"/> 98K	<input type="checkbox"/> 19L
Noise suppression bonds	<input type="checkbox"/> 20P	<input type="checkbox"/> 60R
Perimeter anti-theft alarm (requires key fob)	<input type="checkbox"/> 59B	<input type="checkbox"/> 593
Police Interceptor badge delete	<input type="checkbox"/> 19D	<input type="checkbox"/> 16D
Pre-wiring for grille lamp, siren and speaker	<input type="checkbox"/> 51G	<input type="checkbox"/> 60A
Rear console plate	<input type="checkbox"/> 97D	<input type="checkbox"/> 85R
Rear view camera – Image displayed in rearview mirror	<input type="checkbox"/> 77B	<input type="checkbox"/> 21B
Remote Keyless Entry System (key fob; not available with Keyed alike)	<input type="checkbox"/> 60P	<input type="checkbox"/> 595
Reverse Sensing System	<input type="checkbox"/> 76R	<input type="checkbox"/> 76R
Roof rack side rails – Black	–	<input type="checkbox"/> 68Z
Seat – Rear heavy-duty cloth	<input type="checkbox"/> 88C	<input type="checkbox"/> 88F
Spot lamp – Driver only (incandescent bulb)	<input type="checkbox"/> 21D	<input type="checkbox"/> 51Y
Spot lamp – Driver only (LED bulb)	<input type="checkbox"/> 21L	<input type="checkbox"/> 51R
Spot lamp – Driver and front-passenger (incandescent bulb)	<input type="checkbox"/> 21P	<input type="checkbox"/> 51Z
Spot lamp – Driver and front-passenger (LED bulb)	<input type="checkbox"/> 21B	<input type="checkbox"/> 51S
Steering wheel remappable switches (with voice, requires SYNC)	<input type="checkbox"/> 47K	<input type="checkbox"/> 61S
Trunk circulation fan	<input type="checkbox"/> 97T	–
Trunk storage vault (includes lockable door)	<input type="checkbox"/> 19T	–
Unique steering wheel – Up to 4 remappable switches configurations (less voice)	<input type="checkbox"/> 47J	<input type="checkbox"/> 61R
Windows – Rear-window power disable (operable from driver's side switches)	<input type="checkbox"/> 67D	<input type="checkbox"/> 18W

PACKAGES

Refer to page 21 for full descriptions.

	Sedan	Utility
Cargo Wiring Upfit Package	–	<input type="checkbox"/> 67G
Headlamp Housing	<input type="checkbox"/> 13P	<input type="checkbox"/> 86P
Front Headlamp Lighting Solution	<input type="checkbox"/> 661	<input type="checkbox"/> 66A
Light Controller Package	<input type="checkbox"/> 855	–
Police Interior Upgrade Package	<input type="checkbox"/> 12P	<input type="checkbox"/> 65U
Ready-for-the-Road Package	<input type="checkbox"/> 856	<input type="checkbox"/> 67H
Rear Lighting Solution	<input type="checkbox"/> 663	<input type="checkbox"/> 66C
Taillamp Lighting Solution	<input type="checkbox"/> 662	<input type="checkbox"/> 66B
Trunk Upfit Package	<input type="checkbox"/> 854	–
Two-Tone Vinyl Package #1 (see page 22)	<input type="checkbox"/> 141	<input type="checkbox"/> 91A
Two-Tone Vinyl Package #2 (see page 22)	<input type="checkbox"/> 142	<input type="checkbox"/> 91B
Two-Tone Vinyl Package #3 (see page 22)	<input type="checkbox"/> 143	<input type="checkbox"/> 91C
Vinyl Word Wrap – POLICE located on left and right sides of vehicle	<input type="checkbox"/> 144	<input type="checkbox"/> 91D

LIMITED MAINTENANCE PACKAGES

An exclusive Ford Extended Service Plan (ESP) program for the Police Interceptor. Select the level of maintenance that will best meet your needs – each package includes an engine oil/filter change, tire rotation and extensive Multi-Point Inspection at 3,000- or 5,000-mile intervals as outlined below.

	Sedan	Utility
75,000 miles (assumes 5,000-mile intervals = 15 service events)	<input type="checkbox"/> 521	<input type="checkbox"/> 50A
75,000 miles (assumes 3,000-mile intervals = 25 service events)	<input type="checkbox"/> 522	<input type="checkbox"/> 50B
100,000 miles (assumes 5,000-mile intervals = 20 service events)	<input type="checkbox"/> 523	<input type="checkbox"/> 50C
100,000 miles (assumes 3,000-mile intervals = 33 service events)	<input type="checkbox"/> 524	<input type="checkbox"/> 50D
125,000 miles (assumes 5,000-mile intervals = 25 service events)	<input type="checkbox"/> 525	<input type="checkbox"/> 50E
125,000 miles (assumes 3,000-mile intervals = 41 service events)	<input type="checkbox"/> 526	<input type="checkbox"/> 50F
150,000 miles (assumes 5,000-mile intervals = 30 service events)	<input type="checkbox"/> 527	<input type="checkbox"/> 50G
150,000 miles (assumes 3,000-mile intervals = 50 service events)	<input type="checkbox"/> 528	<input type="checkbox"/> 50H

WHEELS



Standard: Set of 5 heavy-duty 18" 5-spoke steel wheels with center caps (5th wheel is full-size spare)



Optional: Set of 4 heavy-duty 18" full-face wheel covers with metal clips (Sedan 64L/Utility 64B)

Official Ford Upfits

ENSURE COMPATIBILITY IN ADVANCE WITH EQUIPMENT DEVELOPED BY FORD. Save administrative time, shop time and vehicle downtime with components and installation that are verified exactly as part of the Ford Quality System. Crash testing, cycle testing, vibration, severe temperature, humidity and corrosion are evaluated extensively. Every part is validated to vehicle manufacturer safety standards and backed by Ford Dealers and authorized Ford Fleet maintenance facilities.

OBTAIN DETAILED PRODUCT AND TECHNICAL INFORMATION: Download the industry-exclusive *Ford Police Interceptor Modifier Guide* at FordPoliceInterceptor.com.



READY-FOR-THE-ROAD PACKAGE (SEDAN 856/UTILITY 67H)¹

Get into action quickly and efficiently – includes plug-and-play lighting components and mounting solutions. (Not available with Headlamp Housing with Bulbs, Taillamp Lighting with Bulbs, Rear Lighting Solution, Trunk Upfit Package, Light Controller Package or Cargo Wiring Upfit Package.)

	Sedan	Utility		Sedan	Utility
2 front integrated LED lights	☑	☑	Trunk storage vault	☑	–
2 rear integrated LED lights (in taillamps)	☑	☑	Grille LED lights	☑	☑
2 backlite flashing LED lights (mounted to side of chimesel stop light)	☑	–	Wiring harness (includes 2 light cables, 2 grille LED light cables, trunk/cargo power distribution box (PDB), 2 in-trunk 50-amp battery and ground circuits, 10-amp siren/speaker circuit (engine to trunk/cargo))	☑	☑
2 decklid inner flashing LED lights	☑	–	Pre-wiring for grille lamp, siren and speaker	☑	☑
2 backlite flashing LED lights (mounted to side of chimesel stop light)	–	☑	Whelen® CenCom™ light controller	☑	☑
2 liftgate inner flashing LED lights	–	☑	Whelen CenCom relay center/siren amp	☑	☑
Rear console mounting plate	☑	☑	Light controller/relay Whelen CenCom wiring	☑	☑
Trunk circulation fan	☑	–	100-watt siren/speaker	☑	☑
Trunk electronics tray	☑	–	9 I/O digital serial cables (console in trunk)	☑	☑
Hidden door lock plunger w/rear door handles inoperable/locks inoperable	☑	☑			

¹Available. LED Limited Warranty: 5 years/100,000 miles. Siren Speaker Limited Warranty: 2 years/36,000 miles. See your dealer for details. Police Interceptor Packages are covered under the New Vehicle Limited Warranty of 3 years/36,000 miles except where noted.



SPOT LAMPS¹

Choose from driver's side only LED spot lamp (Image A – Sedan 21L/Utility 51R), driver and front-passenger side LED spot lamps (Sedan 21B/Utility 51S), driver's side only incandescent spot lamp (Sedan 21D/Utility 51Y) or driver and front-passenger side incandescent spot lamps (Sedan 21P/Utility 51Z).

HEADLAMP HOUSING (SEDAN 13P/UTILITY 86P)¹

Pre-drilled LED holes. (Does not include LED lights.)

FRONT HEADLAMPS LIGHTING SOLUTION (SEDAN 661/UTILITY 66A)¹

Includes 2 front LED lights integrated in headlamps (Image B, Utility shown)

TAILLAMP LIGHTING SOLUTION (SEDAN 662/UTILITY 66B)¹

Includes 2 rear LED lights (Image C, Utility shown) integrated in taillamps (shown).

REAR LIGHTING SOLUTION (SEDAN 663)¹

Includes 2 backlite-flashing LED lights (Image D) window-mounted on each side of CHMSL (shown) and 2 decklid inner-flashing LED lights.

REAR LIGHTING SOLUTION (UTILITY 66C)¹

Includes 2 backlite-flashing LED lights window-mounted on liftgate and 2 liftgate inner-flashing LED lights mounted at bottom edge.

TRUNK UPFIT PACKAGE (SEDAN ONLY 854)¹

Includes rear console mounting plate, wiring harness (2 LED light cables in engine compartment capable of supporting up to 6 LED lights, 2 grille LED light cables, trunk power distribution box, 2 in-trunk 50-amp battery and ground circuits and a 10-amp engine-to-trunk siren/speaker circuit), trunk circulation fan (Image E) and trunk electronics tray.

LIGHT CONTROLLER PACKAGE (SEDAN ONLY 855)¹

Includes all features in Trunk Upfit Package, plus Whelen PCC8R light controller, Whelen PCC8R light relay center (Image F) mounted in trunk and light controller/relay center wiring.

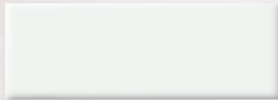
CARGO WIRING UPFIT PACKAGE (UTILITY ONLY 67G)¹

Includes rear console mounting plate (Image G), wiring harness (2 LED light cables in engine compartment capable of supporting up to 6 LED lights, 2 grille LED light cables, cargo area power distribution box, 2 cargo-area 50-amp battery and ground circuits and a 10-amp engine-to-cargo area siren/speaker circuit), Whelen PCC8R light controller, Whelen PCC8R light relay center mounted behind 2nd-row seat and light controller/relay center wiring.



Exterior and Interior Looks

EXTERIOR COLORS



Oxford White (YZ)



Ebony (UA)



Smokestone Metallic (HG)



Arizona Beige Metallic (AQ)



Medium Brown Metallic (BU)



Kodiak Brown Metallic (J1)



Dark Toreador Red Metallic (JL)



Light Blue Metallic (LN)



Light Ice Blue Metallic (LS)



Ultra Blue Metallic (MM)



Royal Blue (LM)



Norsea Blue Metallic (KR)



Deep Impact Blue (J4)



Dark Blue (LK)



Medium Titanium Metallic (YG)



Light Gray (TM)



Silver Gray Metallic (TN)



Ingot Silver Metallic (UX)



Sterling Gray Metallic (UJ)

TWO-TONE VINYL COLOR TREATMENTS¹

TWO-TONE VINYL PACKAGE #1: Vinyl on front doors, rear doors and roof.
(Not available with Two-Tone Vinyl Package 2 or 3, or Vinyl Word Wrap.)

(SEDAN 141)



(UTILITY 91A)



TWO-TONE VINYL PACKAGE #2: Vinyl on roof and hood – plus decklid for Sedan only.
(Not available with Two-Tone Vinyl Package 1 or 3, or Vinyl Word Wrap.)

(SEDAN 142)



(UTILITY 91B)



TWO-TONE VINYL PACKAGE #3: Vinyl on front doors and roof.
(Not available with Two-Tone Vinyl Package 1 or 2, or Vinyl Word Wrap.)

(SEDAN 143)



(UTILITY 91C)



¹Available.

NOTE: Because of occasional variations in printing, consult your Ford Dealer to ensure the true color choice you make is correct. Colors shown are representative only. See your dealer for actual paint/trim options. Visit fleet.ford.com for more information on colors and special paint options.

EXCLUSIVE – AND EXPRESSIVE – TURNKEY “POLICE” VINYL WORD WRAP.
 This bold, vehicle-length vinyl graphics treatment is stop-in-your-tracks arresting.
 (Available on both the Sedan and Utility. Not available with Two-Tone Vinyl Packages.)



INTERIOR COLORS/FABRICS



Charcoal Black heavy-duty cloth with Medium Dark Flint inserts
 (standard for front row, optional for rear row)



Charcoal Black heavy-duty vinyl
 (standard for rear row)

INTERIOR UPGRADE PACKAGE (SEDAN 12P/ UTILITY 65U)¹

Includes cloth rear seats, front and rear floor mats, front and rear carpeted floor covering and center floor console with 2 cupholders and unique police finish.



Sedan with optional rear-row cloth seating – also available on Utility.

Unmarked Vehicles and Select Specs

UNMARKED/DETECTIVE/ADMINISTRATION VEHICLES – THE BETTER TO CATCH THEM IN THE ACT. Go for that stealth-like, low-profile look by adding the Interior Upgrade Package (Sedan 12P/Utility 65U) and full wheel covers (Sedan 64L/Utility 64B), then be sure to delete the Police Interceptor exterior badging (Sedan 19D/Utility 16D). Turn to page 19 for more options to customize your undercover car.



Sedan floor console – Interior Upgrade Package.



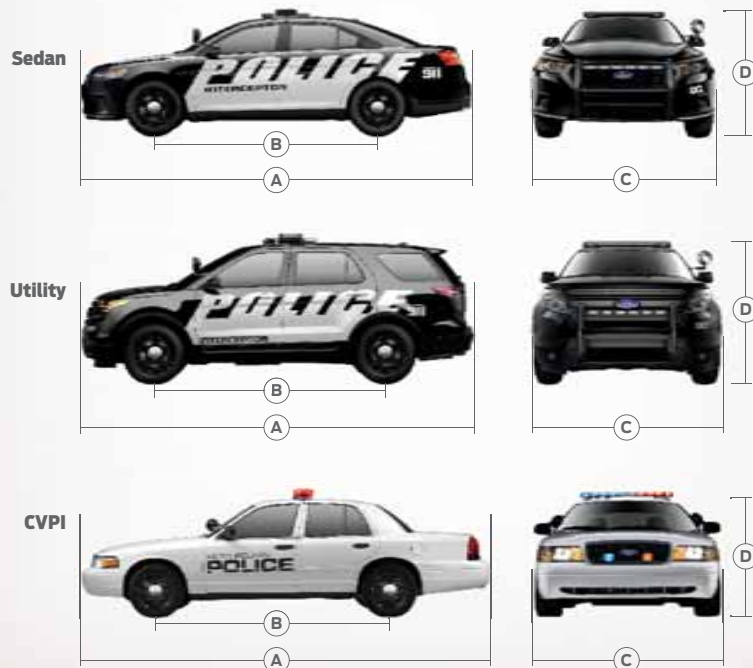


Utility floor console – Interior Upgrade Package.

DIMENSIONS AND CAPACITIES¹

By the numbers: an inside-out comparison of the all-new Police Interceptors and retired CVPI.

EXTERIOR (in.)	Sedan	Utility	CVPI
A. Length	202.9	197.1	212.0
B. Wheelbase	112.9	112.6	114.6
C. Width – Excluding mirrors	76.2	78.9	78.3
Including mirrors	85.7	90.2	84.5
D. Height (excluding options)	61.3	69.2	59.3
Cargo rear opening height	–	32.5	–
Cargo rear opening width at floor	–	46.6	–
INTERIOR (in.)			
Front			
Head room	39.0	41.4	39.5
Shoulder room	57.9	61.3	60.6
Hip room	56.3	57.3	57.4
Leg room	41.9	40.6	41.6
Rear			
Head room	36.7	40.1	37.8
Shoulder room	56.9	60.9	60.0
Hip room	55.9	56.8	56.1
Leg room	39.9	41.6	38.0
CAPACITIES (cu. ft.)			
Passenger volume	102.9	118.4	107.5
Trunk volume	16.6	–	20.6
Cargo volume – Behind 1st row	–	85.1	–
Behind 2nd row	–	48.1	–
Total interior volume	119.5	166.5	128.1
Fuel (gal.)	19.0	18.6	19.0
Seating	5	5	5



Special Service Solutions

FULL FAMILY OF CARS, UTILITIES AND TRUCKS TO FULFILL YOUR DIVERSIFIED NEEDS.

Ford Motor Company is ready to meet your diverse needs with a balanced portfolio of durable, high-quality vehicles – ranging from the extraordinarily efficient to the time-tested tough. A quick visit to fleet.ford.com will help fill you in on the details, including specifications and color options.



2012 EXPEDITION/EXPEDITION EL

Capability comes naturally, and so does configurability. Supersize all that convenience with the Ford Expedition EL.

AVAILABLE MODELS: XL, XL EL Package 102A

SPECIAL SERVICE VEHICLE (SSV):¹ Includes 17" steel wheels, black grille, skid plates (4x4 only), running boards delete, rear non-limited-slip axle, column shifter, floor console delete, 1st-row cloth captain's chairs, 2nd-row vinyl 40/20/40 split bench, 3rd-row delete with cover end cap, flat load floor, vinyl floor covering.

Expedition EL. Vermillion Red. Special Service Vehicle Package and other available equipment.

2012 FUSION/FUSION HYBRID

Compromise is for others – we speak value: The 41-mpg-city² Ford Fusion Hybrid is both responsive and responsible.

AVAILABLE MODELS:

I-4 S, I-4 SE, V6 SE, I-4 SEL, V6 SEL, V6 Sport, Hybrid

2012 ESCAPE/ESCAPE HYBRID

Versa-utility that's perfectly packaged; Ford Escape Hybrid is the most fuel-efficient SUV in America.³

AVAILABLE MODELS:

XLS, XLT, Limited, Hybrid, Hybrid Limited

2012 F-SERIES

Withstanding the punishment of your toughest tasks, Ford F-Series is America's best-selling truck – 34 years running.

AVAILABLE MODELS:

F-150 (Pickup only), F-250 (Pickup only), F-350, F-450, F-550 (Chassis Cab only), F-650, F-750

2012 E-SERIES

America's full-size van sales leader for 32 years straight, Ford E-Series Vans and Wagons are a testament to trust.

AVAILABLE MODELS:

Van, Wagon, Cutaway, Stripped Chassis

2012 TRANSIT CONNECT

Built specifically for any business, Transit Connect provides you with the comfort of a car and the utility of a truck.

AVAILABLE MODELS:

Van, Wagon, XLT Premium Wagon, Transit Connect Electric



Fusion Hybrid. Steel Blue Metallic.



Escape Hybrid Limited. Ingot Silver Metallic.



F-150 XL SuperCrew 4x4. VSO paint color W7862G.



E-250 Cargo Van. School Bus Yellow. Available equipment.



Transit Connect XL Van. Dark Blue.

Plans, Purchases, Parts and VSO Particulars

5-YEAR/100,000-MILE FORD EXTENDED SERVICE PLAN (ESP)¹ – STANDARD ON ALL 2013 POLICE INTERCEPTORS

This guaranteed assurance is further proof of the faith in Ford Police Interceptor dependability. It's the ultimate in component coverage – backed by the strength and stability of Ford Motor Company, honored at all Ford Dealerships, and fixed with Genuine Ford Parts by factory-trained and certified technicians.

FORD ESP IS AVAILABLE FOR ALL FORD SPECIAL SERVICE VEHICLES

Select the extended warranty that best suits your needs and upgrade your protection. There are 4 plans available that wrap around or extend the powertrain warranty – PowertrainCare, BaseCare, ExtraCare, PremiumCare – with comprehensive coverage for up to 7 years and 125,000 miles on new vehicles. In addition, drop-off first-day rental is now included on all plans.

HOW MANY ESSENTIALS CAN YOU FUND THIS YEAR?¹



Commercial Lending Services

The Ford Credit Municipal Lease/Purchase Finance Program is a flexible funding method available to state and local governments to finance "essential use" equipment. This program can help you acquire needed vehicles at today's prices, while taking advantage of low, tax-exempt interest rates and avoiding large lump-sum expenditures.

LEARN MORE

- Contact your local Government Account Manager or your Ford Dealer's Commercial Account Manager
- Visit fordcredit.com/municipal
- Call 1-800-241-4199

BENEFITS

- Maximize limited budget funds, as only the current year's lease payments are included in the operating budget
- Accumulate equity with each payment and realize ownership with a final payment of \$1 at lease end
- No down payment or security deposits are required

- Avoid the repercussions of a tax increase, or the expense and complexity of a bond issue to finance equipment acquisitions
- Optional Ford Extended Service Plans and vehicle accessories may be included in the amount financed; Ford Credit Municipal Finance handles all of the financial arrangements, offering highly competitive rates that provide lower payments
- Flexible payment schedules, including monthly, quarterly or annual payments, can be arranged to meet your financial requirements – consult your tax advisor to determine whether you qualify for tax-exempt financing

VEHICLE SPECIAL ORDER (VSO)

VSO provides special paint options that are not currently offered through regular or fleet-only production. If you are looking for special equipment not currently offered, please contact your Ford Dealer to help determine whether or not your request is feasible. Visit fleet.ford.com to see what VSO can develop for you.

NEW OPTION DEVELOPMENT (VSO INQUIRIES). The establishment of new VSO options is initiated by customer requests called "VSO Inquiries." All requests are received, reviewed and approved by the VSO department to ensure the end product is compatible with regular- and limited-production options. The end product must also meet Ford Motor Company standards for quality, durability, safety and performance.

PRODUCTION TIMING. VSO vehicles with existing VSO options take 60 – 90 days to go from order receipt to production. For vehicles with newly developed VSO options, please include the development timing provided with the inquiry response. For your fleet-planning purposes, VSO production typically begins a month after Job 1 and balances out one month prior to Job Last.

VSO EQUIPMENT AND PAINT OPTION AVAILABILITY. To view current equipment and special paint options, have your dealer access the VSO Ordering Guide at fmcdealer.com. This guide is live and options are always up to date. Some VSO options may not be published in this guide if they were established for, and are restricted to, a specific Major Fleet Account.

SPECIAL PAINTS



GENUINE FORD COLLISION REPLACEMENT PARTS

Dependability is crucial. To do your job, you depend on every piece of your equipment to function as it was designed. The same goes for your police unit, and if you're ever in an accident, you can depend on genuine Ford collision replacement parts: sheet metal, bumpers and lights to help restore your vehicle to pre-accident condition. Genuine Ford collision parts are equal in quality, fit and structural integrity to the original parts that came on your vehicle because they are the same parts used in the production of new vehicles. Designed, engineered, and produced by Ford Motor Company to meet Federal Motor Vehicle Safety Standards. Cheap imitation parts can't make that claim. So don't settle for anything less dependable than genuine Ford collision replacement parts.

QUALITY FLEET CARE

Quality Fleet Care is a centralized billing service you can use to make a single monthly payment on behalf of your entire fleet for maintenance and repairs performed at participating Ford Dealers and Quick Lane Tire & Auto Centers. Over-the-counter part purchases at participating Ford Dealers can also be included. There is no enrollment fee, no per-vehicle fee and no administration fee for warranty-covered repairs. Plus, you preset your drivers' spending limits, which cannot be exceeded without your approval. Visit fleet.ford.com/qfc or call 1-800-367-3221 for more information.

¹Whichever comes first. See your dealer for full ESP details.

Police Advisory Board Members



AN INDUSTRY FIRST. Acting as a liaison and resource for law-enforcement agencies nationwide, the Police Advisory Board (PAB) provides frank and direct feedback on the products, programs and policies of Ford. These 24 officials help refine current vehicles and develop future offerings. Input on safety, reliability and durability is essential to serving unique police operational needs. Please visit fleet.ford.com for additional PAB information.



JOHN BLACKWOOD
Seminole County Sheriff's Office
jblackwood@seminolesheriff.org
(407) 665-6592



DAVID HALLIDAY
Michigan State Police
hallidd@michigan.gov
(517) 335-9887



EARL NEWTON
Oklahoma City Police Department
earl.newton@okc.gov
(405) 297-1166



BRAD BREWER
Vancouver Police Department
sgt1411@gmail.com
(778) 839-1411



ED HANLON
Kansas Highway Patrol, Troop G
ehanlon@ksturnpike.com
(316) 682-4537, ext. 2352



AL ROBINSON
Nevada Highway Patrol
arobinson@dps.state.nv.us
(775) 684-4468



JEFF BROWNE
Arizona Department
of Public Safety
jbrowne@azdps.gov
(602) 223-2520



JIM HANSON
Vernon County
Sheriff's Department
jhanson@vernoncounty.org
(608) 637-2123



ED SANOW
Law and Order Magazine
esanow@hendonpub.com
(800) 843-9764



BETH CAMPBELL
Federal Bureau of Investigation
beth.campbell@ic.fbi.gov
(202) 324-4868



DENNIS HARVEY
Sacramento Sheriff's Department
dharvey@sacsheriff.com
(916) 874-8440



GEORGE SCHWARZ
Borough of Camp Hill
gschwarz1@comcast.net
(717) 737-3456



MARK CARON
Massachusetts State Police
mark.caron@pol.state.ma.us
(508) 820-2271



GREG HESTER
Metropolitan Police
Department, D.C.
greg.hester@dc.gov
(202) 576-5388



STEVE SHIPKOWSKI
San Diego Police Department
sshipkowski@sandiego.gov
(619) 527-6021



MAL CHIVERS
Ontario Provincial Police
mal.chivers@ontario.ca
(705) 329-7647



BRUCE MACLEAN
Charles County Sheriff's Office
macleanb@ccso.us
(301) 609-6242



ANDREW TERPAK
City of Miami Beach
andrewterpak@miamibeachfl.gov
(305) 673-7000, ext. 3601



VANCE DUFFY
Los Angeles County
Sheriff's Department
veduffy@lasd.org
(323) 695-3854



MICHAEL MCCANTS
Palm Beach County
Sheriff's Office
mccantsm@pbso.org
(561) 688-3482



ART WILBURN
Kansas Highway Patrol
awilburn@khp.ks.gov
(785) 260-1689



JACK GRAY
Village of Elk Grove
jgray@elkgrove.org
jackgray@foxvalley.net
(847) 734-8080



MIKE MCCLARY
Indianapolis Metropolitan
Police Department
X0032@indygov.org
(317) 327-5383



KEITH WILSON
Michigan State Police
wilsonkeith@michigan.gov
(517) 322-1789



QUALITY, GREEN, SAFE AND SMART.

FordPoliceInterceptor.com • 1.800.34.FLEET

At the ready for you.

GOVERNMENT ACCOUNT MANAGERS

Don Cobb

Northeast States:
CT, DE, MA, MD, ME, NH, NJ, NY, PA, RI, VT
(860) 250-9914
dcobb@ford.com

Don Dewar

North Central States:
IA, IL, IN, KY, MI, MN, ND, NE, OH, SD, WI
(317) 514-1363
ddewar2@ford.com

Craig Fetty

South Central States:
AR, CO, KS, LA, MO, MS, NM, OK, TX
(303) 522-5753
cfetty@ford.com

Steve Hoe

Western States:
AK, AZ, CA, HI, ID, MT, NV, OR, UT, WA, WY
(916) 705-5350
shoe@ford.com

Bryan Taylor

Southeast States:
AL, FL, GA, NC, SC, TN, VA, WV
(678) 984-4201
jtaylo84@ford.com

GOVERNMENT SALES MANAGER

Tony Gratson

(313) 390-1041
tgratson@ford.com

STATE & LOCAL GOVERNMENT SALES MANAGER

Kevin Fitzpatrick

(313) 390-1058
kfitzpal@ford.com

STATE & LOCAL GOVERNMENT SALES ANALYST

Mona Mlynarczyk

(313) 390-1054
mmlynarc@ford.com

VEHICLE SPECIAL ORDER

Cale Kehoe

Special Paint
(313) 390-0855
ckehoe@ford.com

FEDERAL GOVERNMENT SALES MANAGER

Debra Hairston

(313) 390-1095
dhairsto@ford.com

FORD CREDIT MUNICIPAL FINANCE PROGRAM REGIONAL MARKETING COORDINATORS

Tabitha Crawford

CA, CT, DE, DC, IL, ME, MD, MA, NH, NJ, NY, OK, PA, RI, TX, VT
(313) 594-1825
tcrawf22@ford.com

Ann Creviston

AK, AZ, AR, CO, HI, ID, IA, KS, LA, MN, MS, MO, MT, NE, NV, NM,
ND, OR, SD, UT, WA, WI, WY
(313) 845-7894
acrevist@ford.com

Janet Doty

AL, FL, GA, IN, KY, MI, NC, OH, SC, TN, VA, WV
(313) 390-7184
jdoty@ford.com

FORD FLEET CUSTOMER SERVICE

Fleet Customer Information Center (FCIC): 1-800-34-FLEET (U.S.) • 1-800-668-5515 (CANADA)

Open 8:30 a.m. – 5:00 p.m. EST

The FCIC supports Fleet Accounts by providing a single source to answer all of your Fleet-related questions.

Choose from the following selections:

- FIN Enrollment/Website (Option 1)
- Fleet Sales/Order-to-Delivery (Option 2)



North American Fleet, Lease & Remarketing Operations

Some features discussed may be optional. Vehicles shown may contain optional or modifier-installed equipment. Features shown may be offered only in combination with other options or subject to additional ordering requirements or limitations. Dimensions shown may vary due to optional features and/or production variability. Information in this brochure was developed from Order Guides as of July 2011. Following publication of this catalog, certain changes in standard equipment, options and the like, or product delays may have occurred which would not be included in these pages. For more information on AdvanceTrac® with or without RSC® visit fleet.ford.com. Remember that even advanced technology cannot overcome the laws of physics. It's always possible to lose control of a vehicle due to inappropriate driver input for the conditions. • Always wear your safety belt, secure children in the rear seat and follow airbag warning label instructions. • SYNC: Driving while distracted can result in loss of vehicle control. Only use mobile phones and other devices, even with voice commands, when it is safe to do so. • For more information, visit fleet.ford.com. • King Ranch is a registered trademark of King Ranch, Inc. • Ford Motor Company reserves the right to change product specifications at any time without incurring obligations. All comparisons based on 2011 competitive models.

